

HP Service Test

for the Windows operating system

Software Version: 11.00

Installation Guide

Document Release Date: October 2010

Software Release Date: October 2010



Legal Notices

Warranty

The only warranties for HP products and services are set forth in the express warranty statements accompanying such products and services. Nothing herein should be construed as constituting an additional warranty. HP shall not be liable for technical or editorial errors or omissions contained herein.

The information contained herein is subject to change without notice.

Restricted Rights Legend

Confidential computer software. Valid license from HP required for possession, use or copying. Consistent with FAR 12.211 and 12.212, Commercial Computer Software, Computer Software Documentation, and Technical Data for Commercial Items are licensed to the U.S. Government under vendor's standard commercial license.

Copyright Notices

© Copyright 2000 - 2010 Hewlett-Packard Development Company, L.P.

Trademark Notices

Java™ is a US trademark of Sun Microsystems, Inc.

Microsoft® and Windows® Microsoft and Windows are U.S. registered trademarks of Microsoft Corporation.

Oracle® is a registered US trademark of Oracle Corporation, Redwood City, California.

UNIX® is a registered trademark of The Open Group.

Documentation Updates

The title page of this document contains the following identifying information:

- Software Version number, which indicates the software version.
- Document Release Date, which changes each time the document is updated.
- Software Release Date, which indicates the release date of this version of the software.

To check for recent updates, or to verify that you are using the most recent edition of a document, go to:

<http://h20230.www2.hp.com/selfsolve/manuals>

This site requires that you register for an HP Passport and sign-in. To register for an HP Passport ID, go to:

<http://h20229.www2.hp.com/passport-registration.html>

Or click the **New users - please register** link on the HP Passport login page.

You will also receive updated or new editions if you subscribe to the appropriate product support service. Contact your HP sales representative for details.

Support

Visit the HP Software Support web site at:

<http://www.hp.com/go/hpsoftwaresupport>

This web site provides contact information and details about the products, services, and support that HP Software offers.

HP Software online support provides customer self-solve capabilities. It provides a fast and efficient way to access interactive technical support tools needed to manage your business. As a valued support customer, you can benefit by using the support web site to:

- Search for knowledge documents of interest
- Submit and track support cases and enhancement requests
- Download software patches
- Manage support contracts
- Look up HP support contacts
- Review information about available services
- Enter into discussions with other software customers
- Research and register for software training

Most of the support areas require that you register as an HP Passport user and sign in. Many also require a support contract. To register for an HP Passport ID, go to:

<http://h20229.www2.hp.com/passport-registration.html>

To find more information about access levels, go to:

http://h20230.www2.hp.com/new_access_levels.jsp

Table of Contents

Welcome to This Guide	7
How This Guide Is Organized	7
Who Should Read This Guide	8
HP Service Test Online Documentation	8
Chapter 1: Before You Install	11
About Installing HP Service Test	12
Requirements.....	12
Integrations	12
Licenses.....	13
Troubleshooting	13
Chapter 2: Installing HP Service Test.....	15
Chapter 3: Working with Service Test Licenses.....	23
Understanding Service Test License Types.....	24
Requesting a Seat License Key	26
Installing a Seat License Key	28
Working with a Concurrent License	33
Modifying License Information	39
Working with Commuter Licenses	40
Validating Service Test Licenses	53
Troubleshooting Concurrent Licensing Issues.....	58

Table of Contents

Welcome to This Guide

Welcome to the HP Service Test Installation Guide. HP Service Test is a tool for creating tests for GUI-less components such as Web and REST services. This guide describes how to install and set up HP Service Test.

- ▶ How This Guide Is Organized on page 7
- ▶ Who Should Read This Guide on page 8
- ▶ HP Service Test Online Documentation on page 8

How This Guide Is Organized

This guide contains the following chapters:

Chapter 1 Before You Install

Provides you with the information that helps you prepare for the installation process

Chapter 2 Installing HP Service Test

Describes how to install HP Service Test on a Windows machine.

Chapter 3 Working with Service Test Licenses

Describes the process for requesting and activating a license code for your copy of Service Test.

Who Should Read This Guide

This guide is intended for users who need to install and set up HP Service Test. Readers of this guide should have some knowledge of system administration.

HP Service Test Online Documentation

Service Test includes the following online documentation:

Readme provides last-minute news and information about Service Test. You access the Readme from the **Start** menu.

Printer-Friendly Documentation enables you to open PDF versions of the documents.

Troubleshooting & Knowledge Base accesses the Troubleshooting page on the HP Software Support Web site where you can search the Self-solve knowledge base. Choose **Help > Troubleshooting & Knowledge Base**. The URL for this Web site is <http://h20230.www2.hp.com/troubleshooting.jsp>.

HP Software Web site accesses the HP Software Web site. This site provides you with the most up-to-date information on HP Software products. This includes new software releases, seminars and trade shows, customer support, and more. Choose **Help > HP Software Web site**. The URL for this Web site is www.hp.com/go/software.

Welcome to This Guide

1

Before You Install

This chapter provides you with the information that will help you prepare for the installation process. Before you install HP Service Test, please review the requirements.

- About Installing HP Service Test on page 12
- Requirements on page 12
- Integrations on page 13
- Licenses on page 13
- Troubleshooting on page 13

About Installing HP Service Test

HP Service Test provides you with a user interface to test all types of services, such as WSDL-based and REST services. A wizard guides you through the installation process.

Requirements

For a complete list of supported operating systems and integrations, see the HP Service Test Product Availability Matrix, **hpst_pam.pdf**, in the product's **help** folder.

Before the setup begins, the installation program checks your system for several required components, such as .NET Framework 3.5, Visual C++ 2005 (distributable), and Microsoft Installer 3.1. If these are not present, then it guides you through their installations.

Important: If you are working with a firewall, it is recommended that you add **ServiceTest.exe** to the list of firewall exceptions.

Integrations

Service Test integrates with ALM/QC (Application Lifecycle Management/Quality Center) projects. For full integration, you must have the Service Test Management 10.50 extension for HP ALM/QC or higher.

Note: When working with Service Test Management version 10.50, connect to the ALM/QC server through Internet Explorer at least once, before connecting through the Service Test interface.

Service Test Management version 10.50 with patch 1 does not require this step.

Licenses

Before using Service Test, you must request and activate a license code. For more information, see "Working with Service Test Licenses" on page 19.

Troubleshooting

Registry

During installation, HP Service Test writes several entries to the registry. If you ran an incomplete installation, the registry entries may interfere with a new installation.

To avoid registry conflicts, delete all of the problematic registry entries.

Refer to the log file **Prereq_Mgr.HP_Service_Test.log** in the **%temp%** folder to see a list of the registry entries.

Installation Messages

- ▶ When installing Service Test under a localized version of Windows XP, you may receive a warning when the setup installs MS SQL Server Express. Click **OK** to continue with the installation—this will not affect the setup.
- ▶ When installing Service Test under Windows Vista or 2008, you may receive a warning when the setup installs MS SQL Server Express. Click **Run Program** to continue with the installation.

Remote Execution in Quality Center

To run a test from Service Test in HP ALM/QC on a remote Windows Server machine, you must configure the COM settings. The following procedures describe how to configure a Windows 2003 server. Use the same guidelines for other operating systems. For example, in Windows 2008 Server R2, you enable the Application Server Role in the **Turn Windows Features On/Off** console.

Install COM+ remote access:

- a** Select **Start > Settings > Control Panel > Add or Remove Programs**.
- b** Select **Add/Remove Windows Components** (left pane).
- c** Select the check box adjacent to the **Application Server** in the Windows Component Wizard screen and click the **Details** button.
- d** Select the check box adjacent to **Enable network COM+ access**.
- e** Click **OK**, and restart the computer.

Modify COM+ specific permissions:

- a** Choose **Start > Run**.
- b** Type **dcomcnfg** and press **ENTER**. The Component Services console opens.
- c** Open the following node:
Component Services > Computers > My Computer > COM+ Applications.
- d** Click **Service Test Remote Agent** and select **Properties** from the right-click menu.

- e** Click the **Identity** tab and select **This user**.
- f** Enter the credentials of the user you want to run the test in the remote machine. Make sure that user is part of the administrators group.

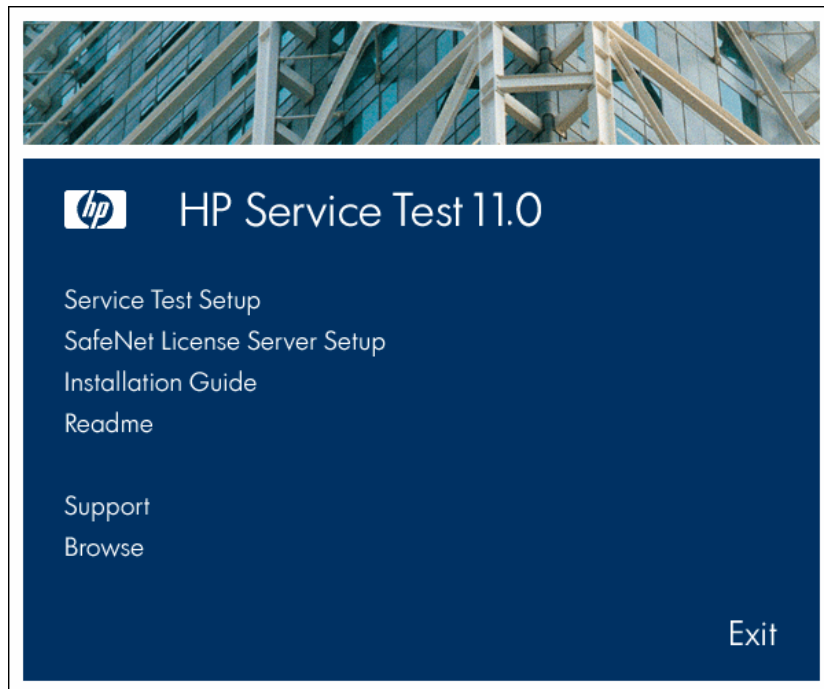
2

Installing HP Service Test

This chapter describes the wizard that guides you through the installation of HP Service Test.

To install HP Service Test:

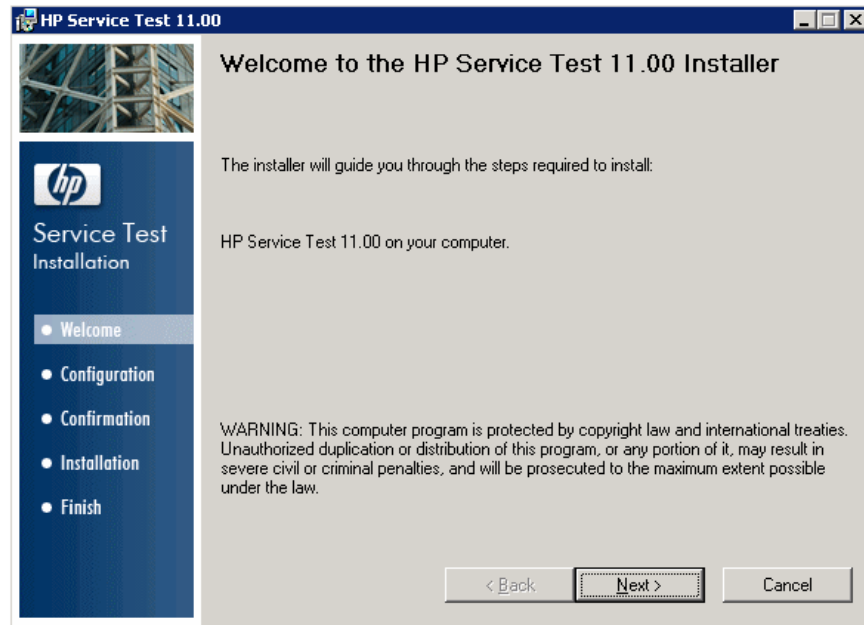
- 1 Insert the media into your drive and wait for the Installation Screen. If it does not open, run the **setup.exe** file in the root directory of the installation media. If you downloaded the installation, run **setup.exe** from the **DVD** directory.



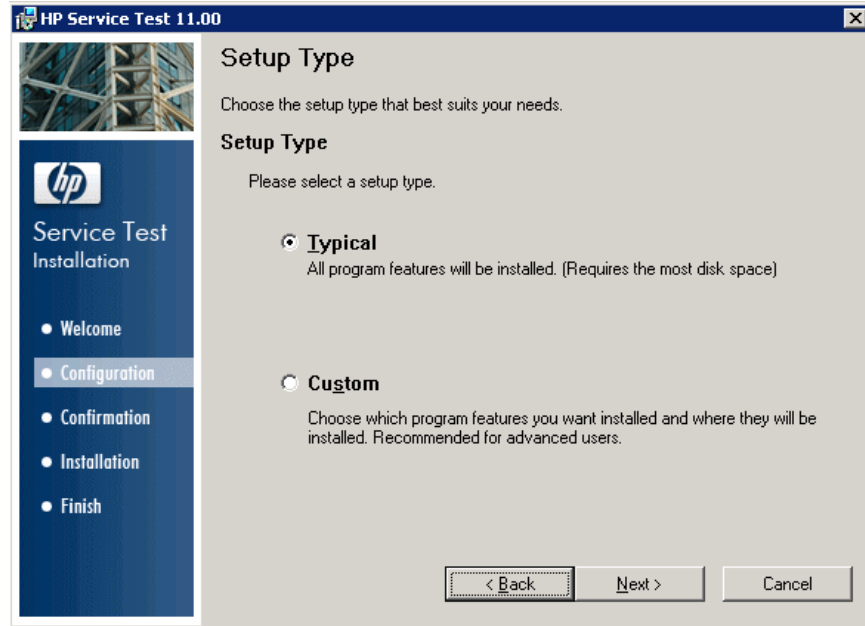
Note: If the Service Test installation directory is located on a network drive, the drive needs to be mapped before you run the installation. You cannot use the UNC (Universal Naming Convention) path to run the installation.

Due to a known Microsoft issue, if you are installing Service Test from a mapped network drive and you are using a Remote Desktop connection, you may receive an error that prevents you from running the installation. To install Service Test using a Remote Desktop connection, copy the installation directory to the local drive and run the installation locally.

- 2 Click the first item, **Service Test Setup**. Service Test requires several prerequisite programs, such as Microsoft Visual C++ run-time components. If the Installation program detects that your machine is lacking one of these programs, it prompts you to install them. You may need to restart your machine after installing the prerequisite programs. After restart, run the setup program again as described in Step 1.
- 3 The Service Test Setup Wizard opens. Click **Next** to proceed.



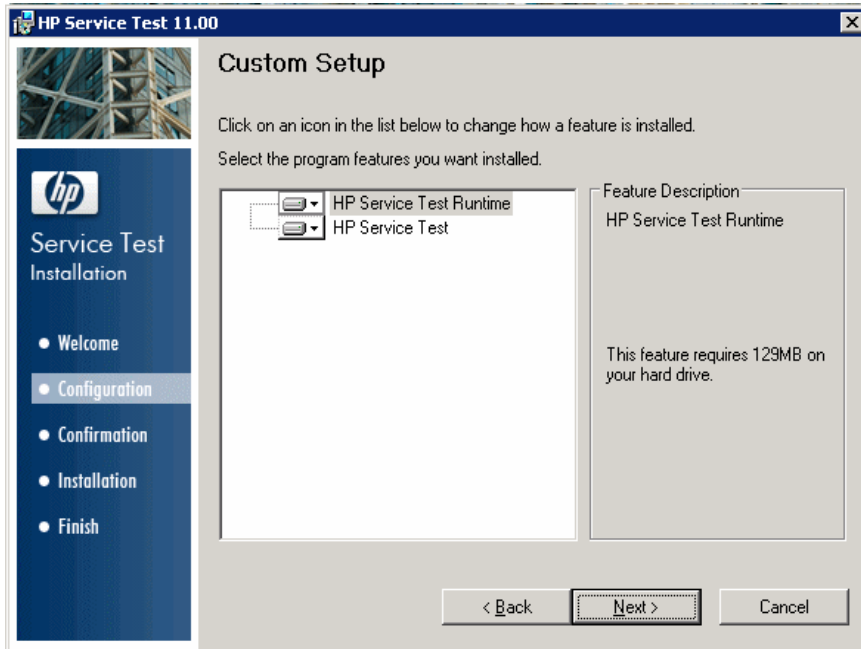
- 4 Review the license agreement and if the terms are acceptable to you, select **I Agree**. Click **Next**.
- 5 In the Customer Information page, provide your name and organization name. Click **Next**.
- 6 In the Setup Type page, select **Typical** or **Custom**.



- Select **Typical** to install the most common program features.
- Select **Custom** to choose the features that you want to install. The following features are available:

Click **Next**.

- 7 If you selected a **Custom** installation, the Custom Setup page opens.
 - ▶ **HP Service Test Runtime.** The minimum installation required for running tests on a machine. This applies to Load Generator machines that do not require the design capabilities of Service Test—only the ability to run a test. Selecting only this option enables you to conserve disk space.
 - ▶ **HP Service Test.** The complete HP Service Test product.

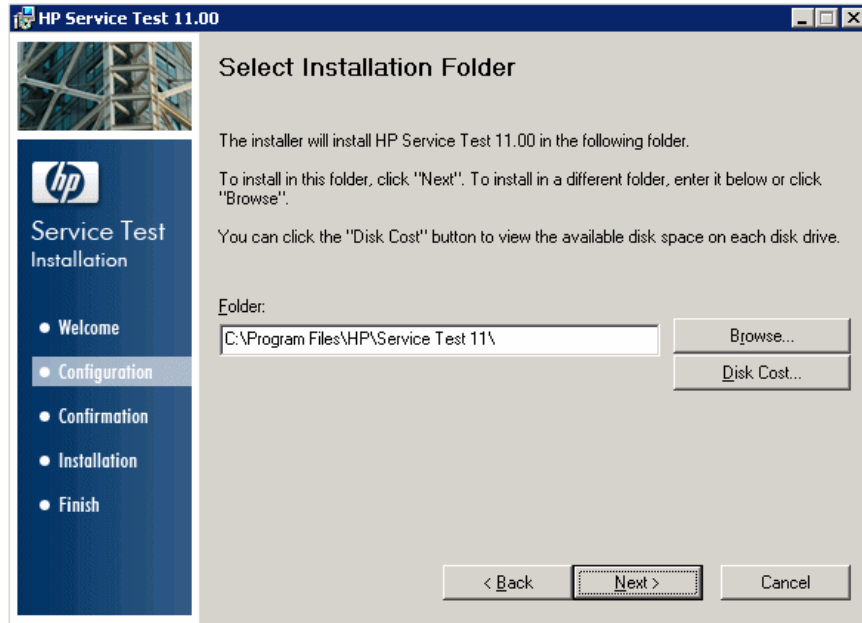


By default, all the features are selected for installation. To exclude a feature, click the arrow next to the feature and, from the menu that opens, select **Entire feature will be unavailable**.

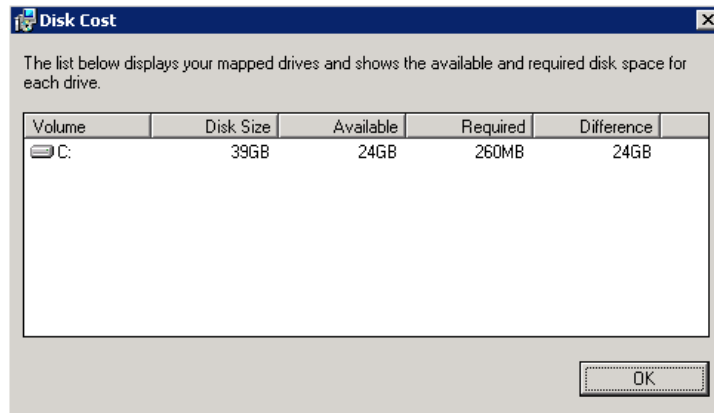
For Load Generator machine installations, remove the **HP Service Test** feature.

Click **Next** to proceed.

8 Accept the default installation folder or browse for an alternate one.

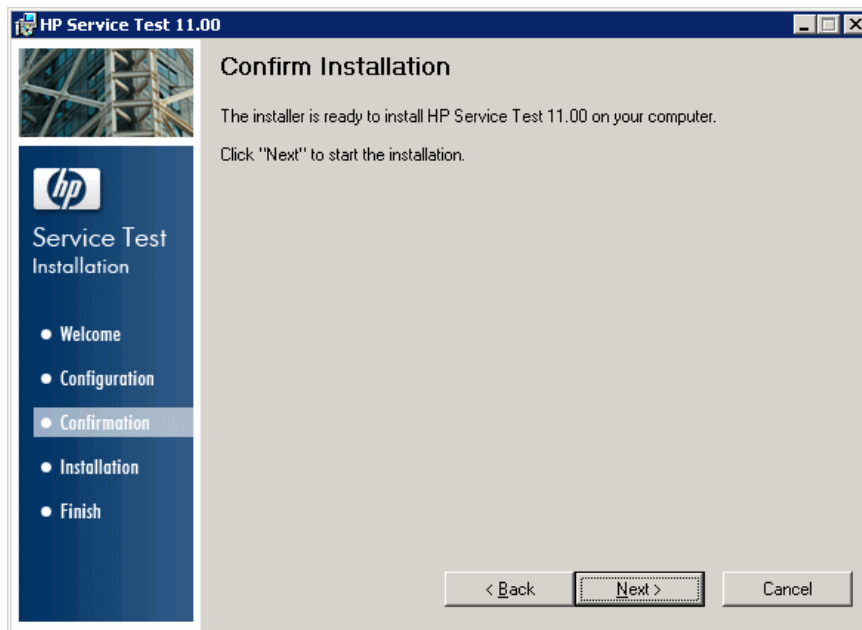


You can check the required and available disk space for each drive, by clicking **Disk Cost**. Click **OK** to close the Disk Cost dialog box.



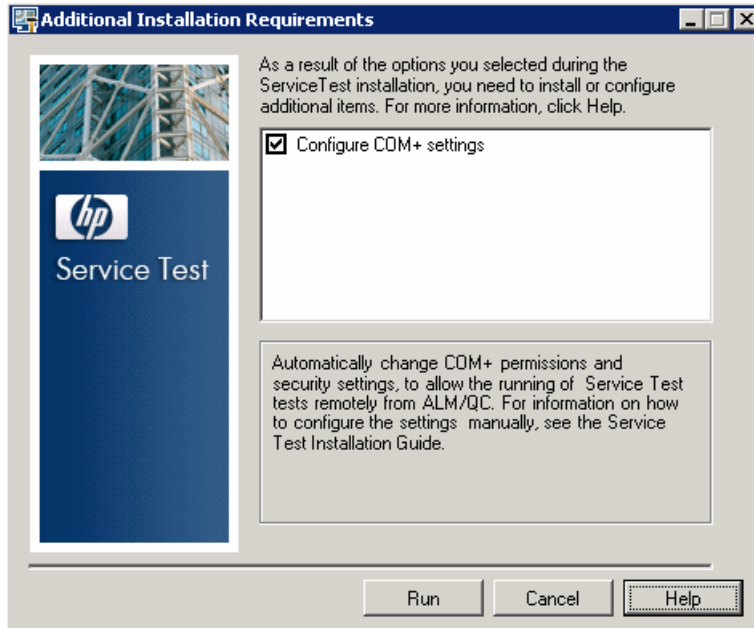
Click **Next** to proceed.

- 9 The wizard prompts you to confirm the installation.



- 10 Click **Next** to begin the installation.

- 11 When the installation is complete, click **Finish**. The installation wizard prompts you to run additional configurations required for Service Test.



- 12 Click **Run** to continue the configuration process. When the setup program completes the configuration, it issues a message indicating that the installation is complete.
- 13 Click **Close** to end the installation program.

3

Working with Service Test Licenses

You can install Service Test using a *seat* license (formerly known as a local or standalone license) or a *concurrent* license.

This chapter includes:

- ▶ Understanding Service Test License Types on page 24
- ▶ Requesting a Seat License Key on page 26
- ▶ Installing a Seat License Key on page 28
- ▶ Working with a Concurrent License on page 33
- ▶ Modifying License Information on page 39
- ▶ Working with Commuter Licenses on page 40
- ▶ Validating Service Test Licenses on page 53
- ▶ Troubleshooting Concurrent Licensing Issues on page 58

Understanding Service Test License Types

To use Service Test, you must have a valid license. There are two types of licenses: seat and concurrent. The table below summarizes the differences between the two license types.

Topic	Seat License	Concurrent License
General description	The license is specific to the computer on which it is installed.	Each license entitles the organization to one additional concurrent user.
Number of installations per license key	Each installation of Service Test requires a distinct license key.	There is no limit to the number of Service Test installations on the network, but a special concurrent license server regulates the number of computers that can run a copy of Service Test at any time.

Topic	Seat License	Concurrent License
Other issues	<p>The license key is based partially on the locking code, which is a code that identifies the computer on which Service Test is installed. The supplied license key works only for the computer on which the locking code was generated.</p> <p>Note: A computer with multiple bootable partitions may generate a different locking code for each partition. If a different locking code is generated for a partition, you will need to request a unique license key for it.</p>	<p>Not supported for Unix networks.</p> <p>It is recommended that the concurrent license server has a fixed IP address.</p> <p>Service Test client computers must have TCP/IP installed.</p> <p>To use concurrent licenses across networks, UDP port 5093 must be open on the server.</p>
Entering license key	<p>At the end of the installation procedure, Service Test asks you to enter the license key. If you do not have a license key at that point, it asks you to enter the key the first time you open Service Test.</p>	<p>Each time Service Test opens, it automatically searches the same subnet for the concurrent license server. You do not need to enter a license key for your Service Test client installation.</p>

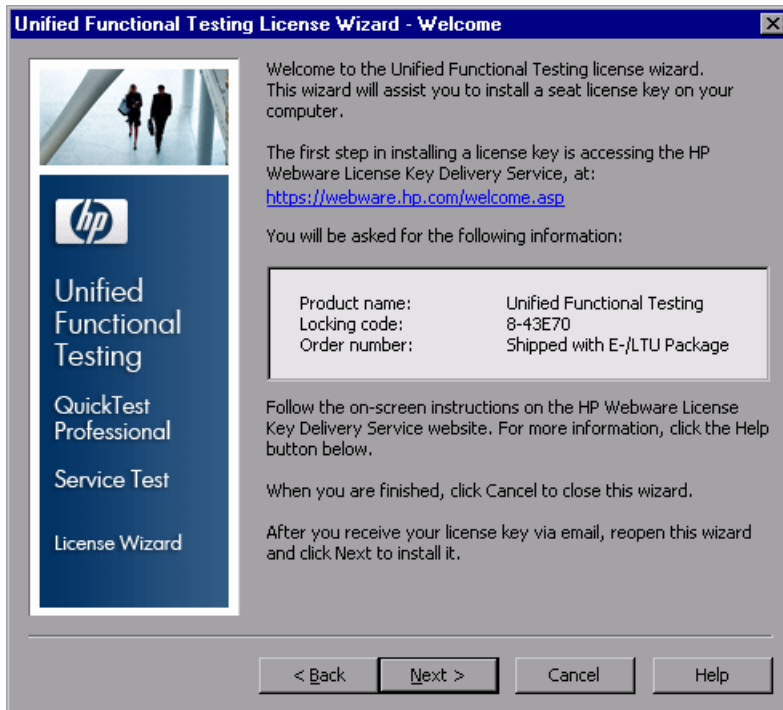
You can view and copy license information and license validation information, if needed. For example, you may want to retrieve license information for administrative or troubleshooting purposes. For more information, see "Validating Service Test Licenses" on page 53.

Requesting a Seat License Key

When you install Service Test, you must request and activate a license key.

To request a seat license key:

- 1 Select **Start > All Programs > HP Service Test 11 > Service Test License Manager**.
- 2 The License Type screen opens. Select **Seat license** and click **Next**. Click **Yes** to install a new license key. The Welcome screen opens.



- 3 Make a record of the displayed locking code for your computer. You will need it to request your license key. Click the link on the Service Test License Installation - Welcome screen for the **HP Webware License Key Delivery Service** to request your license key. Follow the instructions as described in "Requesting a License Key via the HP Webware License Key Delivery Service" on page 27.

Requesting a License Key via the HP Webware License Key Delivery Service

The HP Webware License Key Delivery Service assists you in requesting a license key. This procedure provides an overview of this process as it specifically relates to requesting license keys.

For details on the individual fields in the License Key Delivery Service form, download the ESD and Webware License Management Guide. (Click the **Webware User Guide** link in the **Support** section of the HP License Key Delivery Service Welcome page.)

To request a license key:

- 1** Click the link on the License Installation - Welcome screen for the **HP Webware License Key Delivery Service**. A browser opens to the HP License Key Delivery Service Welcome page.
- 2** Click the **Generate New Licenses** icon. The HP Passport sign-in page opens.
- 3** If you have used the HP Passport or Webware Licensing service before, enter your e-mail address and password. Otherwise, login as a new user.
- 4** Click **Sign-in**. The Address information page is displayed. If you are a returning user, Webware automatically populates the fields with your information. If you are a new user, fill in the information according to the on-screen instruction. For information on filling in the Address information page, see the ESD and Webware License Management Guide.
- 5** Enter the order number from the Software Entitlement Certificate you received in your LTU or ELTU package.
- 6** Click **Next**. The Product Selection page is displayed.
- 7** Select the check box next to the product for which you are requesting a license key.
- 8** Click **Next**. The Order Product Detail(s) page is displayed.
- 9** Enter the locking code for your computer. The locking code is found in the License Installation - Welcome screen.

- 10** If you are a customer representative requesting a license key on behalf of a customer and do not want them to receive a copy of the transaction, deselect the **E-mail a copy of this license transaction to the license owner** check box.
- 11** If you are the end-user customer select the **I am the License owner** check box. The **License owner (End-user) information** section is disabled.
- 12** If you are a customer representative requesting a license key on behalf of a customer, deselect the **I am the License owner** check box. Complete the information requested in the **License owner (End-User) information** section.
- 13** Click **Next**. The License/Password page is displayed. Keep a record of your **Session ID** and click **Main Menu** to return to the Welcome page. A Permanent Password Certificate will be e-mailed to the address you provided, containing your license key.
- 14** Click **Cancel** and wait for your Permanent Password Certificate to arrive by e-mail. When it arrives, follow the instructions as described in "Installing a Seat License Key" on page 28.

Installing a Seat License Key

In the License Key screen, you enter the license key you received from HP. The license key is included in the **.dat** file attached to the e-mail containing your Permanent Password Certificate.

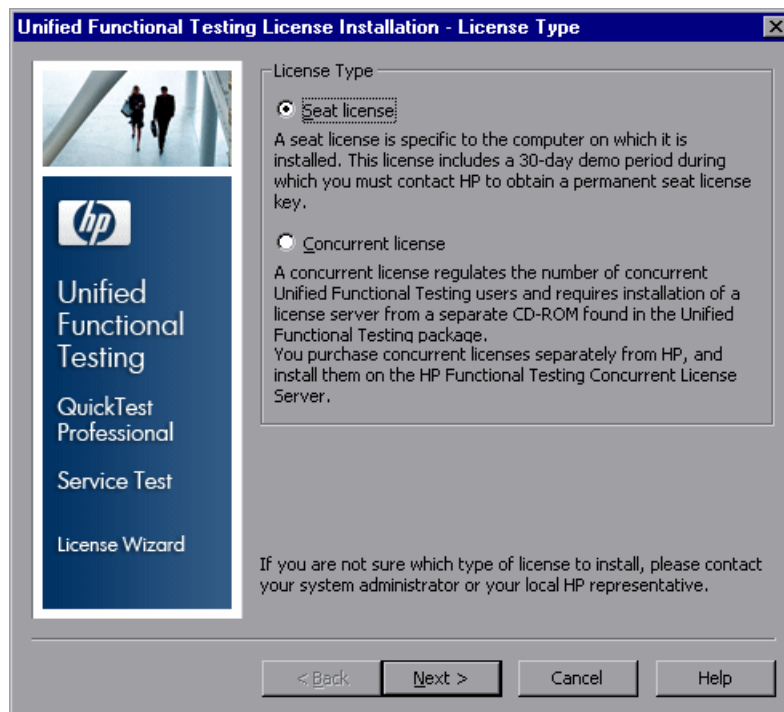
Caution:

- ▶ You must have Administrator privileges to install a license key.
 - ▶ After installing the seat license key, do not change your computer's date or time. This triggers a **Clock Tamper** lock on the license information, preventing you from using the license.
-

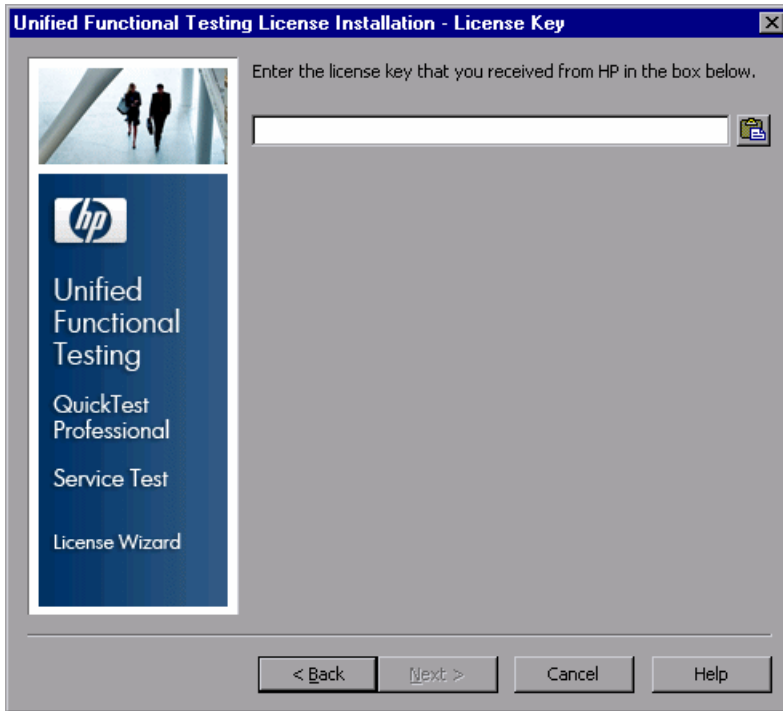
To install a seat license key:

- 1** Open the **.dat** file attached to the email containing your Permanent Password Certificate using any text editor. The license key is also included in the Permanent Password Certificate.
- 2** Select and copy the license key including the # character from the **.dat** file to the clipboard.
- 3** Perform one of the following:
 - ▶ From the license warning message displayed when you start Service Test, click **Install License**.
 - ▶ From the Start menu, select **Start > Programs > HP Service Test 11 > Service Test License Manger**.

The License Type screen opens.



4 Select **Seat license** and click **Next**.

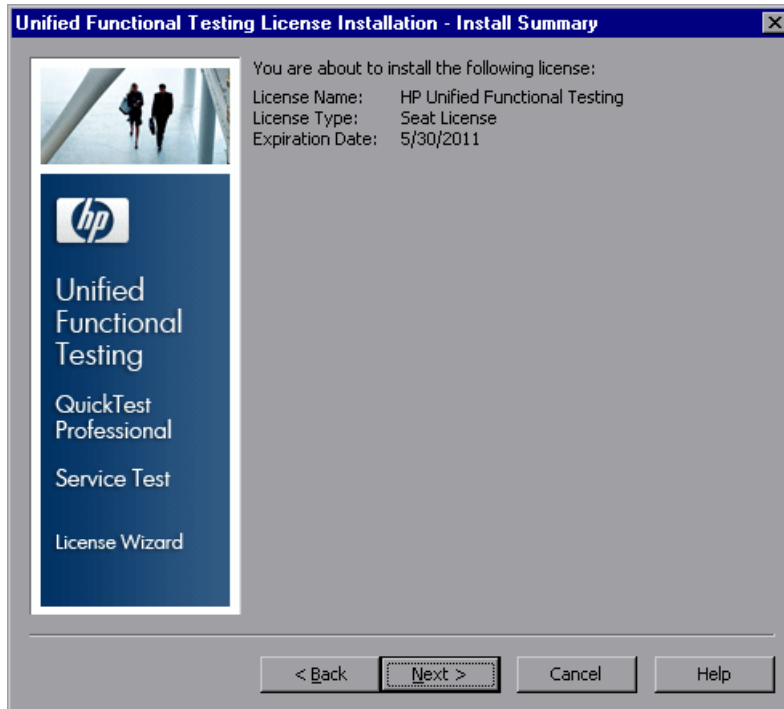


5 Paste the key into the License Installation - License Key screen by clicking the **Paste From Clipboard** button.

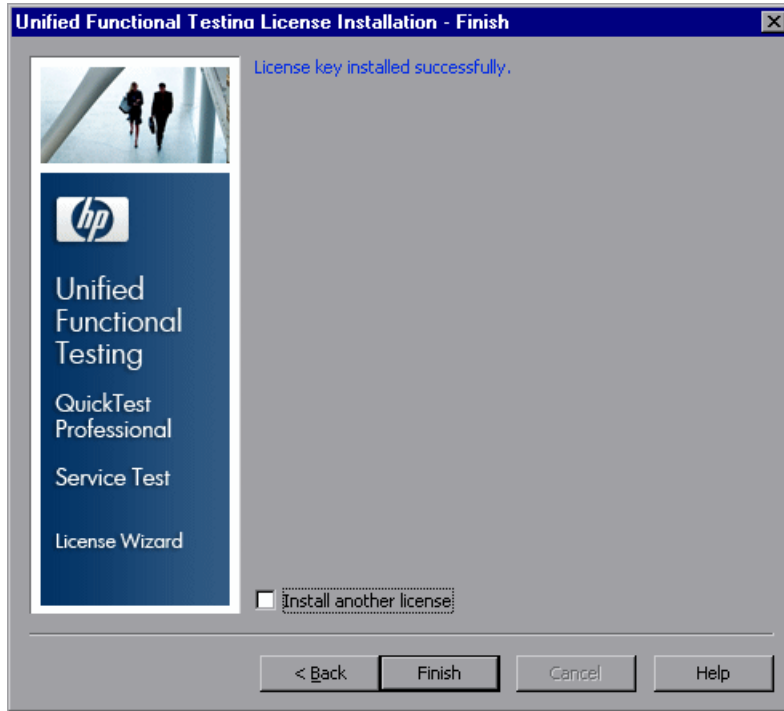
Notes:

- ▶ The license key is valid only for the computer with the locking code that you entered in the HP Software Support license request form.
 - ▶ A computer with multiple bootable partitions may generate a different locking code for each partition. If a different locking code is generated for a partition, you will need to request a unique license key for it.
-

6 Click **Next**. The Install Summary screen opens.



- 7 Verify that the information is correct and click **Next**. The Finish screen opens.



If you entered a valid license key, the Finish screen confirms that your license key was successfully installed.

If the license could not be installed successfully, a message is displayed describing why. For example, if a seat license was previously installed on your computer, and you try to install a seat license again using the same license key, the license installation will not succeed. If the license could not be installed, a **Send to Support** button is displayed. You can click **Send to Support** to create an e-mail with licensing information and send it to your nearest HP Software Support location. Make sure that you fill in the required information in the e-mail so that Software Support can assist you.

Tip: You can install another license by selecting the **Install another license** check box.

- 8 If you do not want to install another Service Test license, click **Finish** to complete the license activation process and close the wizard.

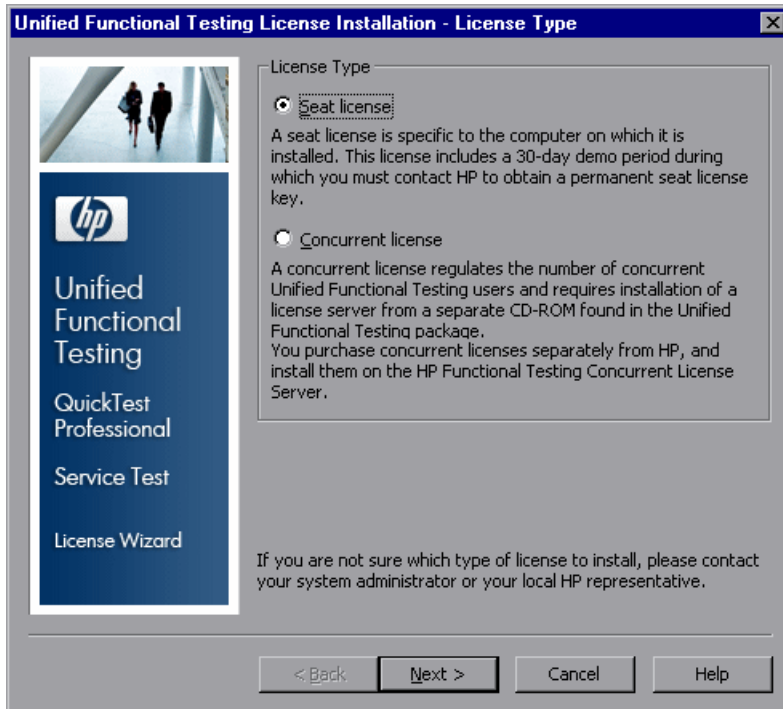
Working with a Concurrent License

If there is an accessible concurrent license server on your network with an available license, you can connect to it. This enables you to use a concurrent license instead of a seat license. For more information on working with concurrent license servers, and the supported versions, see the *HP Functional Testing Concurrent License Server Installation Guide*.

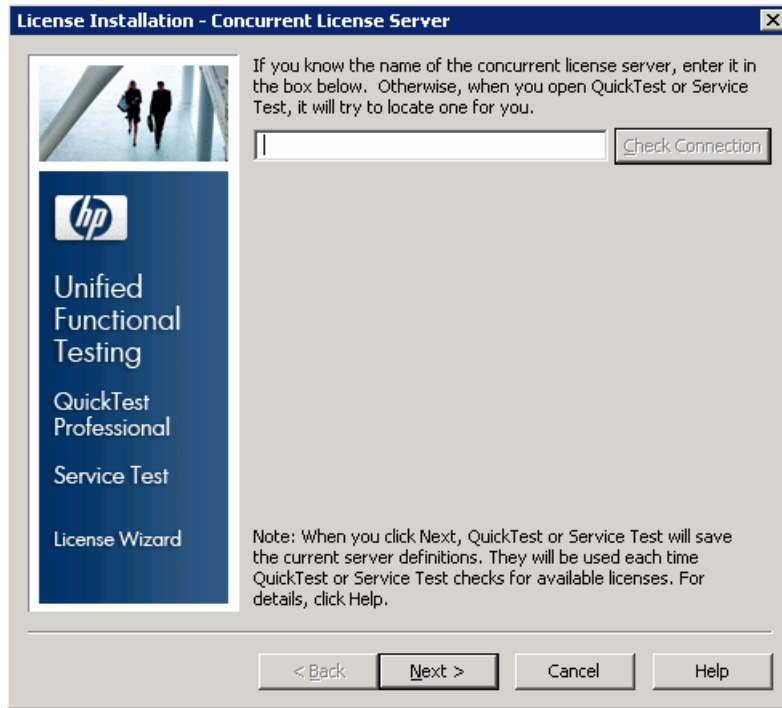
To work with a concurrent license:

- 1 Perform one of the following:
 - From the license warning message displayed when you start Service Test, click **Install License**.
 - From the Start menu, select **Start > Programs > HP Service Test 11 > Service Test License Manger**.

The License Type screen opens.



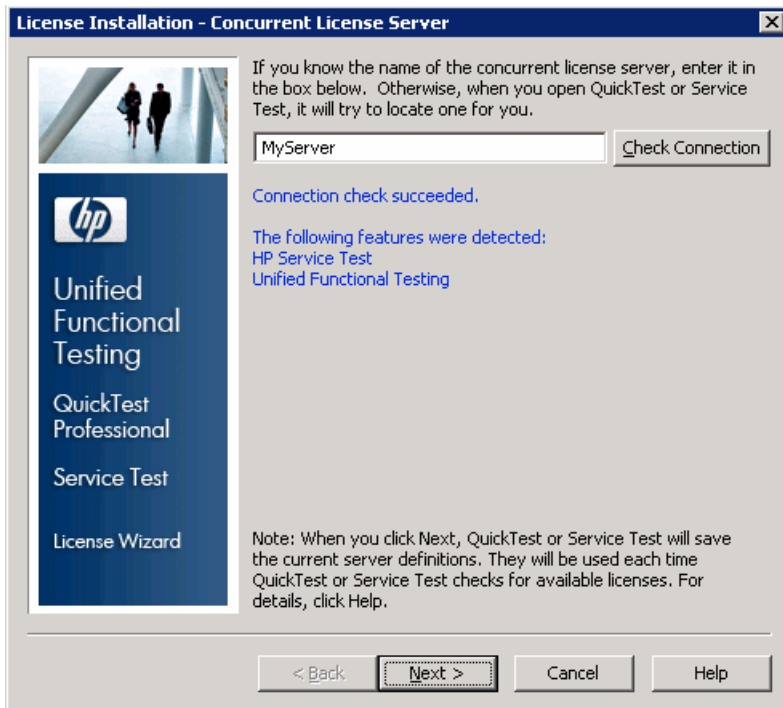
- 2 Select **Concurrent license** and click **Next**. The Concurrent License Server screen opens.



- 3 In the edit box, either enter the name or IP address of the concurrent license server to which you want to connect, or leave the box blank to instruct Service Test to search for an available server on your local network.

Tip: When you activate a concurrent license using the License Wizard and specify a single server name, the LSFORCEHOST user variable is automatically defined with the concurrent license server you specified. You can modify the concurrent license server either by running the License Wizard or by setting the LSHOST or LSFORCEHOST user variable. For more information, see the *HP Functional Testing Concurrent License Server Installation Guide*.

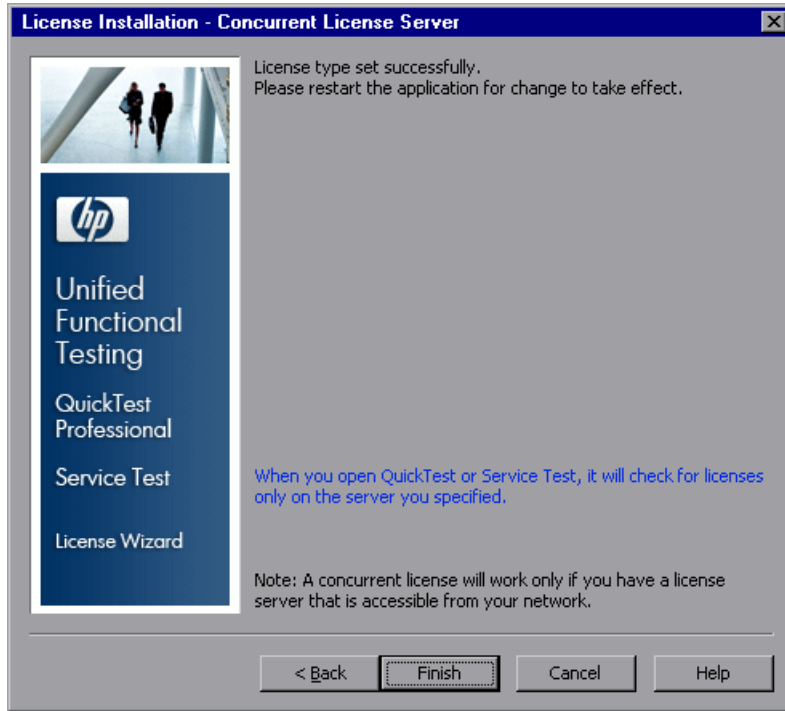
- 4 Click **Check Connection**. If Service Test can connect to the concurrent license server, a success message is displayed.



Note: If the installation cannot connect to a concurrent license server, the Concurrent License Server screen informs you of this.

Tip: If you want to specify the name of a concurrent license server that is currently unavailable, but will be available later, you can enter the name of the concurrent license server in the edit box. Even though the Concurrent License Server screen informs you that the specified server is not available for connection, the next time you open Service Test, Service Test will try to locate the server you specified.

- 5 Click **Next**. The installation informs you that the concurrent license activation was successful.



- 6 Click **Finish** to close the wizard. If Service Test is open, you must close and restart it to use the concurrent license server.

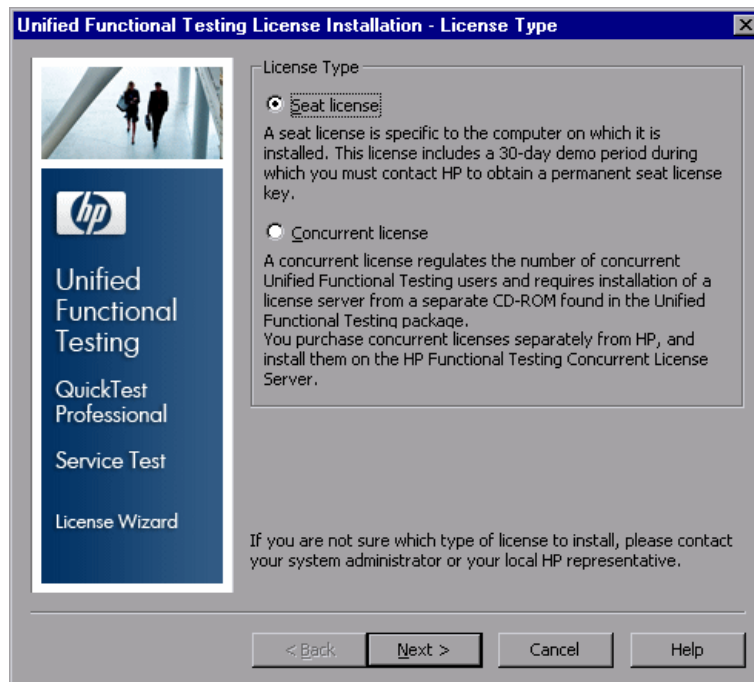
Modifying License Information

After you install Service Test, you can modify your license key and/or change your license type at any time. For more information on requesting a new license key, see "Requesting a Seat License Key" on page 26.

Note: You must be logged in with administrator privileges to change the license type used by your Service Test installation from seat to concurrent or vice versa.

To modify your license information:

- 1 From the Start menu, select **Programs > HP Service Test 11 > Service Test License Manger**. The License Type screen opens.



- 2 To change your license type from concurrent to seat, select **Seat license** and click **Next**. A confirmation box opens.

- ▶ If you already have a valid seat license key installed, click **No** to save your selected license type.
 - ▶ If you checked out a commuter license and want to use it now, click **No**.
 - ▶ If you do not have a seat license key installed, click **Yes**.
- 3** To change your license type from seat to concurrent, select **Concurrent license** and click **Next**. Follow steps 2 to 6 in Working with a Concurrent License.
 - 4** Restart Service Test to apply your changes.

Note: To work with a concurrent license, a concurrent license server must be installed on and accessible from the network, and a concurrent license must be available. For information on installing a concurrent license server, see the *HP Functional Testing Concurrent License Server Installation Guide*.

Working with Commuter Licenses

If you use Service Test with a concurrent license, but cannot connect your computer to your network (for example, during a business trip), you can install a commuter license. Commuter licenses are available in companies that have only concurrent licenses (not seat licenses).

For example, suppose you need to travel on business with your laptop computer and you want to use Service Test while you are away. You can check out a Service Test license from the concurrent license server to use for the duration of your trip, and then check the license back in upon your return. Commuter licenses are valid for up to 180 days, according to your requirements.

Tip: If you have a concurrent license and are located far from the concurrent license server, you can also use a commuter license if you encounter network traffic.

For more information, see "Checking Out a Commuter License" below, and "Checking In a Commuter License" on page 44.

Note: Installing a commuter license requires administrator permissions for the computer on which you want to use the license.

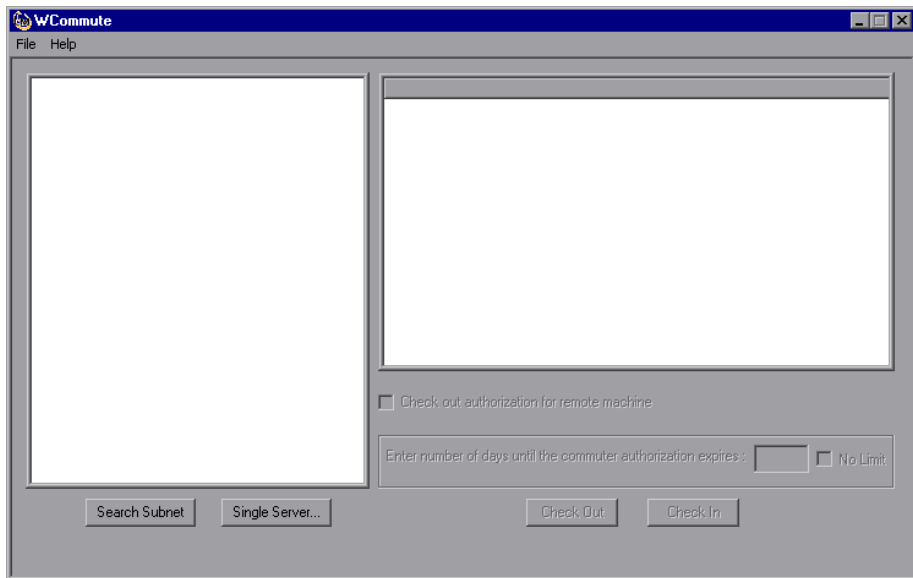
In addition, if you are unable to check out a license before you disconnect from the network (that is, leave for your trip), or if you checked out a license but it expired because your return was delayed, you can ask a local network user to check out a commuter license and send it to you remotely. For more information, see "Obtaining a Commuter License Remotely" on page 45.

Checking Out a Commuter License

Before you check out a commuter license, ensure that the computer (for example, a laptop) on which you want to install the commuter license has Service Test installed, is connected to the network, and has access to a concurrent license server with an available Service Test license. After you have checked out the license, you can disconnect the computer from the network.

To check out a commuter license:

- 1 From the Start menu, select **Programs > HP Service Test 11 > Commuter License Tool**. The WCommute dialog box opens.



- 2 To see commuter licenses available on all concurrent license servers located within your subnet, click **Search Subnet**. If you want to specify a particular concurrent license server, or if you want to select a concurrent license server outside of your subnet, click **Single Server**.
 - If you click **Search Subnet**, the Commuter License Tool, WCommute, searches the subnet for concurrent license servers that support commuter licensing and displays them in the WCommute dialog box. Note that this process may take several minutes.

- ▶ If you click **Single Server**, a dialog box opens enabling you to specify the concurrent license server you want to locate. Enter the concurrent license server computer's host name, IP address, or IPX address and click **OK**. The specified concurrent license server is located and displayed in the WCommute dialog box.

For each concurrent license server, a list of available commuter licenses is displayed. A red check mark next to a commuter license means that the license is already checked out to your computer. You cannot check out multiple licenses for the same application to the same computer. Click a license to view the license details in the right pane of the dialog box.

- 3** Select the license that you want to check out.
- 4** In the **Enter number of days until the commuter authorization expires** box, specify the maximum number of days to check out the license. The maximum number of days is 180.

Note:

- ▶ Service Test supports the Sentinel RMS License Manager version 8.3.0 as its concurrent license server. If you are upgrading to Service Test with a concurrent license, you must also upgrade your concurrent license server.
- ▶ When you check out a license, it decreases the number of licenses available for use by others. Therefore, you should specify the absolute minimum number of days that you require.

- 5** Click **Check Out**. The selected license is saved locally on your computer.
- 6** To use the new checked-out license, open Service Test and change your license type from concurrent to seat. In the confirmation message that opens after you change the license type, click **No** to use the commuter license. For more information, see "Modifying License Information" on page 39.

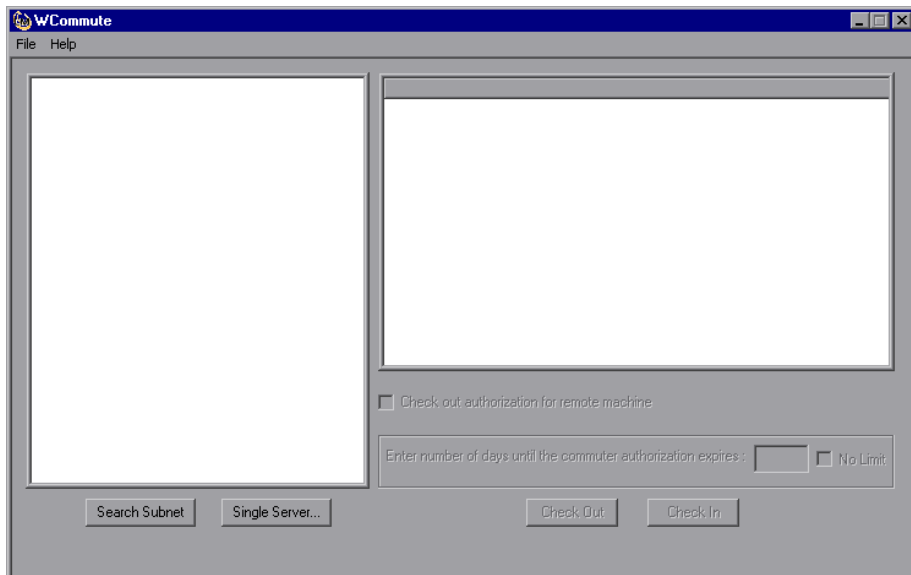
Checking In a Commuter License

When you finish using the commuter license, you should check it in from your computer to the concurrent license server from which you checked it out. This makes the license available to other users.

Note: If your license expires, you do not need to check it in. When a license expires, you can no longer use it. The license is automatically returned to the concurrent license server, even if your computer is not connected to the concurrent license server network.

To check in a commuter license:

- 1 From the Start menu, select **Programs > HP Service Test 11 > Commuter License Tool**. The WCommute dialog box opens.



- 2 Locate the concurrent license server for the commuter license you want to check in, as described in step 2 of “Checking Out a Commuter License” on page 42. You must check in the license to the same concurrent license server from which you checked it out.

- 3 Select the license you previously checked out.

Tip: The checked-out license is indicated by a red check mark.

- 4 Click **Check In**. The license is returned to the concurrent license server, and is made available for use by others.

Note: Before you can use Service Test again, you must change your license type from seat to concurrent. For more information, see "Modifying License Information" on page 39.

Obtaining a Commuter License Remotely

A local network user can locally check out a Service Test commuter license and send it to you for installation on a remote computer. This is useful in situations in which you are currently not connected to the concurrent license server network. For example, you may be out of the office on an extended business trip, but need to be able to use Service Test.

To obtain a commuter license remotely:

- 1 Run the **WRCommute** utility to generate a commuter locking code for your computer and send it to a local user with access to the concurrent license server. For more information, see "Step 1: Generating a Remote Computer Locking Code" on page 46.
- 2 Ask the local user to run the **WCommute** utility entering the commuter locking code you generated, to check out a remote commuter license, and send it to you. For more information, see "Step 2: Checking Out a Commuter License for a Remote Computer" on page 49.

- 3 Run the WRCommute utility from the <Service Test installation>\ bin directory to install the remote commuter license on your computer. For more information, see "Step 3: Installing a Commuter License on a Remote Computer" on page 51.
- 4 Open Service Test and change your license type from concurrent to seat. In the confirmation message that opens after you change the license type, click **No** to use the commuter license. For more information, see "Modifying License Information" on page 39.

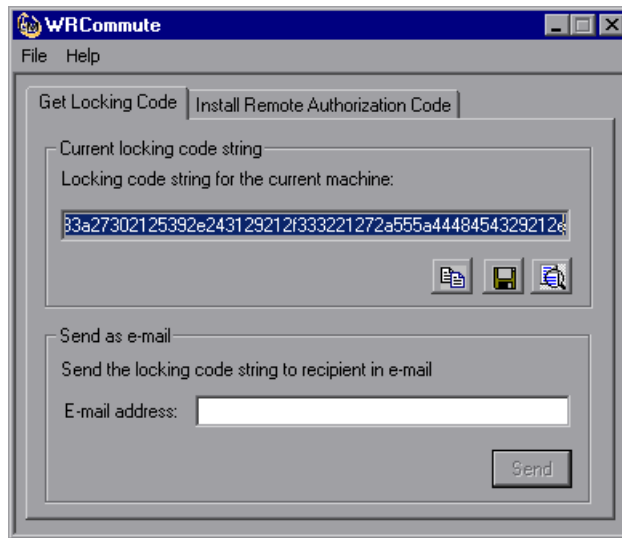
Step 1: Generating a Remote Computer Locking Code

The first step in remotely obtaining a commuter license is to generate a locking code on your computer using the WRCommute utility, and transfer it (by e-mail) to a network user who has access to the concurrent license server.

Note: The remote computer locking code used to lock a commuter license is not the same as the locking code displayed by the ECHOID utility. You must use the WRCommute utility to obtain the commuter license locking code.

To generate a locking code on a remote computer:

- 1 Run the **WRCommute.exe** file located in **<Service Test installation folder>\bin**. The WRCommute dialog box opens.



The **Locking code string for the current machine** box contains the locking code that you need to e-mail to a network user who has access to the concurrent license server containing the Service Test licenses.

- 2 Send the locking code to the local network user in one of the following ways:



- Select the locking code string and click the **Copy to clipboard** button to copy the string to your Windows clipboard. Then open your e-mail program and paste the string into a new e-mail message and e-mail it to the local network user.



- Click the **Save lock code string to file** button to save the locking code in a file. Specify the name and location for the file, and then attach the file to a new e-mail message and e-mail it to the local network user.



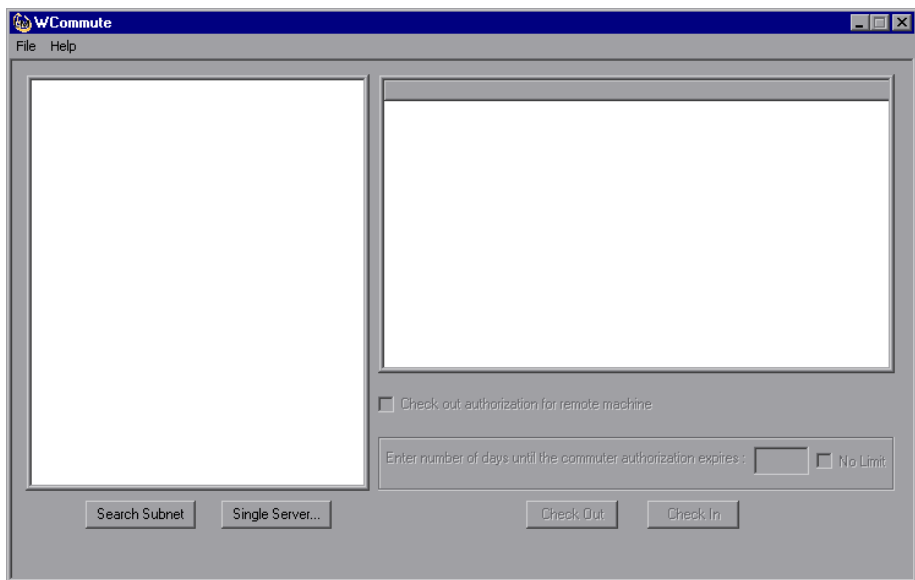
- Click the **Display locking code string** button to display the entire locking code in another dialog box. You can then select the locking code string, right-click it and select **Copy** to copy it to your Windows clipboard. Then open your e-mail program and paste the string into a new e-mail message and e-mail it to the local network user.
- In the **E-mail address** box, enter the e-mail address of the local network user and click **Send**. Note that this option is supported only if Microsoft Outlook Express is set up as your e-mail client.

Step 2: Checking Out a Commuter License for a Remote Computer

After a local network user receives the locking code, the user can check out the license and transfer it to you (by e-mail). To do this, the user must have Service Test installed on his or her computer and also have access to the concurrent license server with an available Service Test license.

To check out a commuter license for a remote computer:

- 1 From the Start menu, select **Programs > HP Service Test 11 > Commuter License Tool**. The WCommute dialog box opens.



- 2 Locate the concurrent license server from which you want to check out a remote commuter license, as described in step 2 of “Checking Out a Commuter License” on page 42.

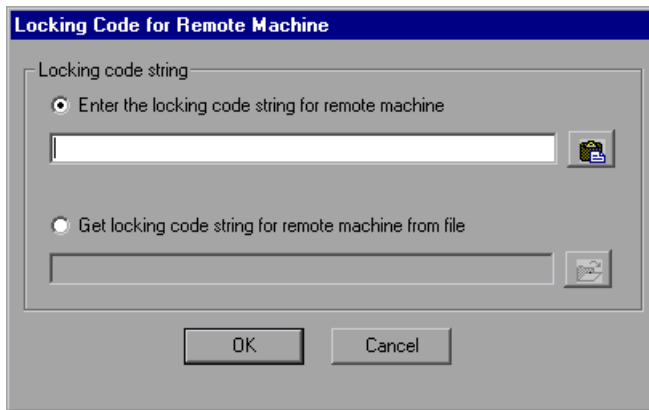
For each concurrent license server, a list of commuter licenses that you can check out is displayed.

- 3 Select the license that you want to check out.
- 4 Select the **Check out authorization for remote machine** check box.

- 5 In the **Enter the number of days until the authorization expires** box, specify the number of days to check out the license. The maximum number of days is 180.

Note: When you check out a license for a remote computer, it cannot be checked in and remains in use (unavailable to other users) for the entire number of days specified. Therefore, you should specify the absolute minimum number of days required.

- 6 Click **Check Out**. The Locking Code for Remote Machine dialog box opens.



- 7 Enter the locking code that the remote user e-mailed you in one of the following ways:

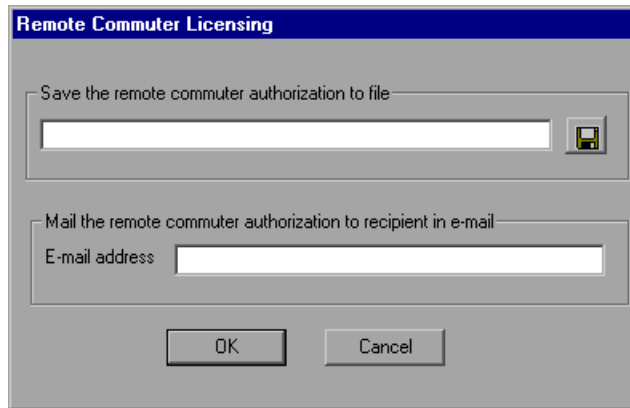


- ▶ If the locking code was e-mailed to you in the body of an e-mail, copy it to your Windows clipboard. In the Locking Code for Remote Machine dialog box, select **Enter the locking code string for remote machine** and then click the **Paste from clipboard** button.



- ▶ If the locking code was e-mailed to you as an attached file, save the attachment and then select **Get locking code string for remote machine from file**. Click the **Load** button. Select the file that contains the locking code and click **Open**.

- 8 Click **OK**. The Remote Commuter Licensing dialog box opens.



- 9 Send the commuter license to the remote user in one of the following ways:



- Click the **Save** button to save the locking code in a file. Specify the name and location for the file, click **Save** and then click **OK**. Attach the file to a new e-mail message and e-mail it to the remote user.
- In the **E-mail address** box, enter the e-mail address of the remote user. Click **Send** and then click **OK**. Note that this option is supported only if Microsoft Outlook Express is set up as your e-mail client.

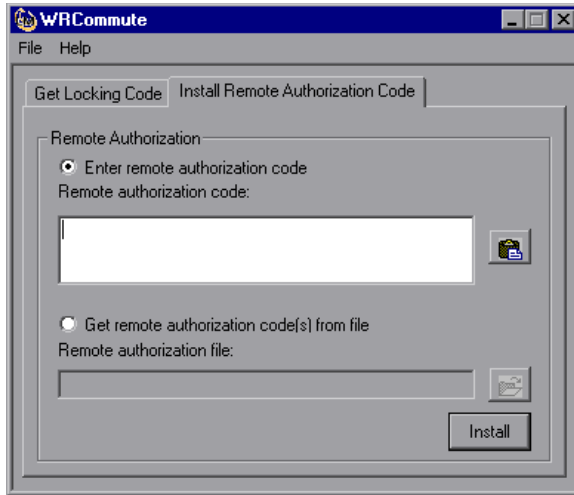
Step 3: Installing a Commuter License on a Remote Computer

The final step in remotely obtaining a commuter license is to install the license that was sent to you by the network user on your computer.

To install a commuter license on a remote computer:

- 1 Ensure that you are logged in to your computer with administrator privileges.
- 2 Run the **WRCommute.exe** file located in <Service Test installation folder>\bin. The WRCommute dialog box opens.

3 Click the **Install Remote Authorization Code** tab.



4 Enter the commuter license that the network user e-mailed you, as follows:



- ▶ If the commuter license was e-mailed to you in the body of an e-mail, copy it to your Windows clipboard. In the Install Remote Authorization Code tab of the WRCCommute dialog box, select **Enter remote authorization code** and then click the **Paste from clipboard** button.



- ▶ If the commuter license was e-mailed to you as an attached file, save the attachment and then select **Get remote authorization code(s) from file**. Click the **Load** button. Select the file that contains the locking code and click the **Open** button.

5 Click **Install**. The new license code is installed on your computer.

Step 4: Modifying the License Type on the Remote Computer

Open Service Test and change your license type from concurrent to seat. In the confirmation message that opens after you change the license type, click **No** to use the commuter license. For more information, see "Modifying License Information" on page 39.

Note: A remote commuter license cannot be checked in to the concurrent license server when you have finished using it—it simply expires on the remote computer. After you return to your office and are reconnected to the network, you should change your license type from seat to concurrent. For more information, see "Modifying License Information" on page 39.

Validating Service Test Licenses

The License Validation Utility decodes and validates Service Test license strings. This enables you to view and copy license information and license validation information for troubleshooting purposes.

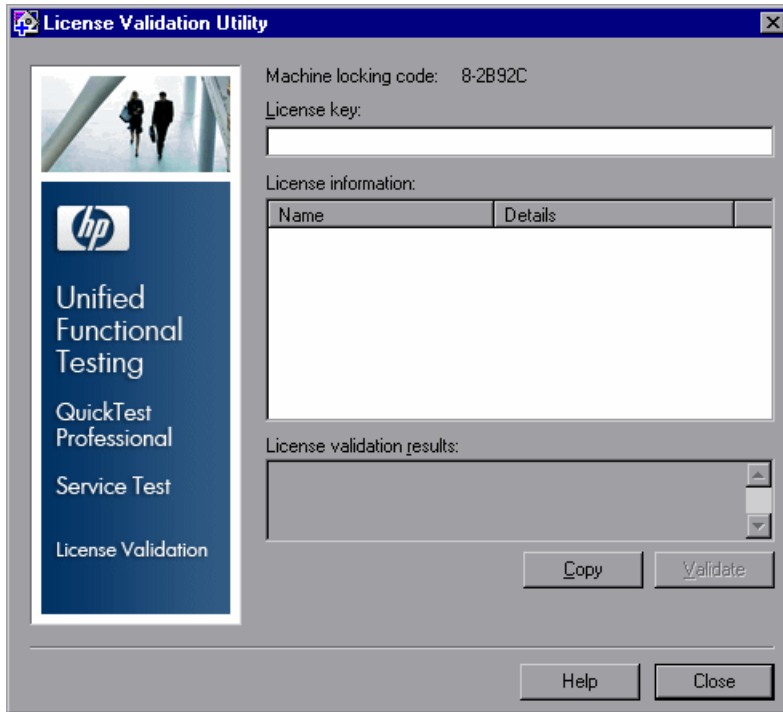
The License Validation Utility performs the following operations:

- ▶ Decodes the license string and retrieves important information regarding the license. For more information, see "License Information" on page 56.
- ▶ Validates the license according to a predefined set of checks. For more information, see "Validation Checks" on page 57.

If required, you can copy the decoding and validation results to the clipboard. For more information, see "Copying your License Validation Result to the Clipboard" on page 57.

To decode and validate a license:

- 1** Select **Start > Programs > HP Service Test > Tools > License Validation Utility**.



- 2** In the **License Key** box, enter the license code you want to decode and validate. You can find the license code already installed on a Service Test computer in the **lservrc** file. The location of this file is specified by the **lservrc** environment variable.

Tips:

- When you enter the license code, ensure that a # character is inserted at the end of the license code, or an error will be reported in the **License validation results** area. The # indicates the end of the license code, and any string after the # character is ignored by the License Validation Utility.
 - To find the path of the **lservrc** file in the environment variable, right-click **My Computer** and select **Properties**. In the System Properties dialog box, select the **Advanced** tab, and then click **Environment Variables**. The path is displayed in the **User variables for <user>** box of the Environment Variables window for the LSERVRC variable. For example, C:\Program Files\Common Files\HP\License Manager\lservrc.
-

- 3** Click **Validate**. The license string is decoded.

License information is displayed in the **License information** area. For more information, see "License Information" on page 56.

The result of the validation is displayed in the **License validation results** area. For more information, see "Validation Checks" on page 57.

- 4** If required, click **Copy** to copy the information to the clipboard. The copied information includes the current computer locking code, the license string that was decoded, and the decoding and validation results. For more information, see "Copying your License Validation Result to the Clipboard" on page 57.
- 5** Click **Close** to close the utility.

License Information

The result of the decoding operation includes the following information about the license.

Note: Some information provided by the operation is intended for HP Software Support only and is not described here.

- ▶ **Feature Name.** The Service Test feature name specified when the license was created.
- ▶ **Feature Version.** The license version specified when the license was created. This is not the Service Test version number.
- ▶ **Seat/Concurrent.** The license type. This can be either a **Seat** license that is specific to the computer on which it is installed, or a **Concurrent** license, which references a current license server that can be used by multiple Service Test users.
- ▶ **Trial/Normal.** The license type. It can be either a **Trial** license, which is a demo license that has a limited period of use, or a **Normal** license (QuickTest only).
- ▶ **Trial Days Count.** Applicable only for trial licenses. Specifies the number of days until the trial period is over. The count is started from the date the Service Test core components are installed (QuickTest only).
- ▶ **Locking Code.** The locking code specified when the license was created. This code uniquely identifies the computer on which Service Test is installed.
- ▶ **Clock Tamper.** Indicates whether a license can be issued, based on whether any date changes have been made to the computer on which Service Test is installed.
- ▶ **Commuter License.** Indicates whether commuter licenses are supported. A commuter license enables you to work with Service Test when you are not connected to the Service Test concurrent license server. Commuter licenses are available only with concurrent licenses. For more information, see "Working with Commuter Licenses" on page 40.

Validation Checks

The validation checks performed by the License Validation Utility include the following:

- 1** Does the Service Test feature name match one of the existing features?
- 2** Does the license version match one of the existing versions?
- 3** Does the locking code match the locking code of the computer on which Service Test is installed?
- 4** Has the trial period specified in the license string ended?
- 5** If the license is a concurrent license, does it support commuter licenses?

Copying your License Validation Result to the Clipboard

In some cases, you may need a copy of the information provided by this utility. For example, you may need to forward this information to HP Software Support.

When the validation operation is complete, click the **Copy** button to copy the information to the clipboard. Then paste the information as required.

Troubleshooting Concurrent Licensing Issues

In certain circumstances, Service Test cannot connect to the license server, and a License Error message opens.

Check whether one or more of the following are causing the error:

- "There is no network connection between the server and client computers" on page 58
- "The license server is not running" on page 59
- "Licenses are not installed on the license server" on page 59
- "The license key file (lservrc) cannot be found on the server" on page 60
- "The license server is being used by the maximum number of users" on page 60
- "Two or more versions of the license server are running" on page 61
- "The client computer is configured to use a seat license" on page 61
- "The license key does not match the license server locking code" on page 61
- "The client computer cannot identify the license keys on the server computer" on page 62
- "The LSHOST or LSFORCEHOST variables are not set" on page 63
- "The LSERVRC system variable is set on the client computer" on page 63
- "The client computer connects through VPN software" on page 63

There is no network connection between the server and client computers

You can check the network connection between the client and server machines by pinging the license server machine in a command prompt window.

For example: `c:\ ping <license server name>`

If there are no replies from the ping command, or if there are timeouts in the replies, there may be a network problem. If required, contact your Computer or Network Administrator.

The license server is not running

You may need to start or restart the license server service.

To start or restart the license server service:

- 1 Open the Control Panel (**Start > Settings > Control Panel**).
- 2 Select **Services**.

Note: On some operating systems, such as Windows 2000, the Services utility is located in the Administrative Tools section (folder) of the Control Panel.

- 3 Select **SentinelRMS** service.
- 4 Click **Start the Service** (or **Restart the Service**), or right-click and select **Start** (or **Restart**).

Licenses are not installed on the license server

Use the WlmAdmin utility to check that licenses are installed on the license server. For more information on the WlmAdmin utility, see the **Utilities** chapter in the *HP Functional Testing Concurrent License Server Installation Guide*.

To check licenses on the license server:

- 1 Run **SrvUtils.exe** in the **LicenseServer\utils** folder of the Service Test installation DVD.
- 2 Select **WlmAdmin**.
- 3 Enter the license server name as a defined server.
- 4 Try to expand the license server branch.

If no license key information is displayed, then the installed licenses are invalid, or the license key file (lservrc) cannot be found. If license key information is displayed, then the installed licenses are valid. You can check whether the licenses are all in use by selecting a license and checking the **Statistics** pane in the WlmAdmin utility.

The license key file (lservrc) cannot be found on the server

The lservrc file should be located in the following directory:

<drive>\Program Files\Common Files\SafeNet Sentinel\Sentinel RMS License Manager\WinNT

If the file is not there, the license server will not be able to locate licenses. Search the license server computer for the file. If found, move the file to the correct directory and restart the SentinelLM service. If the file is not found, licenses are not installed.

The license server is being used by the maximum number of users

- ▶ If all licenses are in use, the License Server Manager will not be able to issue another license until a license is released. You can use the WlmAdmin utility to determine which users are currently using the licenses. Run **SrvUtils.exe** in the **LicenseServer\utils** folder of the Service Test installation DVD, and select **WlmAdmin**.

For more information on the WlmAdmin utility, see the **Utilities** chapter in the *HP Functional Testing Concurrent License Server Installation Guide*.

- ▶ There may be cases where Service Test closes unexpectedly and does not release the license automatically. If this happens, you can wait for the license to timeout, or you can restart the license server.

For more information, see the HP Software Self-solve knowledge base (<http://h20230.www2.hp.com/selfsolve/document>) (the Knowledge Base area requires that you register as an HP Passport user and sign in). In the knowledge base, search for:

Document ID 18428. "What happens if AQT/QTP crashes on a client machine while using a Floating license".

Two or more versions of the license server are running

Only one version of the license server should be installed and running on the same computer. If there are more versions, use Add/Remove Programs to uninstall all of the license server instances. Then install the latest version of the license server software and reinstall the license code keys.

The client computer is configured to use a seat license

For information on how to check and modify concurrent license or seat license configuration, see "Modifying License Information" on page 39.

The license key does not match the license server locking code

Use the `lsdecode.exe` utility to check the locking code for a license key.

To check the license key locking code:

- 1** Copy the `lsdecode.exe` utility from the `LicenseServer\utils` folder of the Service Test installation DVD to the location of the `lservc` file (`<drive>\Program Files\Common Files\SafeNet Sentinel\Sentinel RMS License Manager\WinNT`).
- 2** Run the `lsdecode.exe` utility. A command prompt window will open with the decoded key information.

The locking code for the license key is displayed on the **Server locking code** line.

- 3** Run the `inst_key.exe` utility from the `LicenseServer\KeyInstallation` folder of the Service Test installation DVD.

The license server computer's locking code will be displayed on the Welcome screen.

Note: This step must be done on the license server computer. Accessing the license server computer remotely can generate an invalid license code.

- 4 Compare the locking code for the license key and from the server computer.

If the locking codes do not match, you will need to determine why the locking code has changed. Reinstalling the operating system, renaming the computer, using a dynamic IP address, retrieving the locking code through a terminal session, or installing the license keys through a terminal session can cause the locking code to be changed and the license keys to become invalid.

After you have determined why the locking code has changed, you can submit a License Request to have a new license key generated.

The client computer cannot identify the license keys on the server computer

Use the WlmAdmin utility to check the licenses on the client computer. For more information on the WlmAdmin utility, see the **Utilities** chapter in the *HP Functional Testing Concurrent License Server Installation Guide*.

To check licenses on the client computer:

- 1 Run **SrvUtils.exe** in the **LicenseServer\utils** folder of the Service Test installation DVD.
- 2 Select **WlmAdmin**.
- 3 Enter the license server name as a defined server.
- 4 Try to expand the license server branch.

If license keys are not identified, then either UDP Port 5093 is blocked between the client and server, or the IP address of the license server is using Network Address Translation (NAT), which is not supported. If required, contact your Computer or Network Administrator.

For more information, see the HP Software Self-solve knowledge base (<http://h20230.www2.hp.com/selfsolve/document>) (the Knowledge Base area requires that you register as an HP Passport user and sign in). In the knowledge base, search for:

- **Document ID 18402.** "What is port 5093 in the license mechanism used for?"
- **Document ID 41449.** "Does UDP port 5093 need to be bi-directional?"
- **Document ID 18424.** "How to set up the License Manager for machines running on different subnets."

The LSHOST or LSFORCEHOST variables are not set

For information on how to set these variables, see the *HP Functional Testing Concurrent License Server Installation Guide*.

The LSERVRC system variable is set on the client computer

The LSERVRC variable is used for seat licenses and may have been created for the demo license when Service Test was installed. If this variable exists, it must be removed so it does not interfere with locating the license server.

To remove The LSERVRC system variable:

- 1** On your desktop, right-click **My Computer** and select **Properties**.
- 2** Select the **Advanced** tab and click **Environment Variables**.
- 3** Check the System Variables list for the LSERVRC variable. If it exists, click **Delete**.
- 4** Click **OK** to close the windows.
- 5** Reboot the client computer to implement the changes.

The client computer connects through VPN software

If the client computer is connecting through VPN software, verify that VPN has **not** been configured to use **IPSec over UDP**. This configures the network to use Network Address Translation (NAT), which is not supported.

