

# **Radia Extensions for Windows Installer**

## **Radia Extensions for Windows Installer Getting Started Guide**

**Software Version: 4.0**

**for the Windows operating system**



**Manufacturing Part Number: T3424-90051**

**August 2004**

© Copyright 2004 Hewlett-Packard Development Company, L.P.

## Legal Notices

### Warranty

*Hewlett-Packard makes no warranty of any kind with regard to this document, including, but not limited to, the implied warranties of merchantability and fitness for a particular purpose. Hewlett-Packard shall not be held liable for errors contained herein or direct, indirect, special, incidental or consequential damages in connection with the furnishing, performance, or use of this material.*

A copy of the specific warranty terms applicable to your Hewlett-Packard product can be obtained from your local Sales and Service Office.

### Restricted Rights Legend

Use, duplication, or disclosure by the U.S. Government is subject to restrictions as set forth in subparagraph (c)(1)(ii) of the Rights in Technical Data and Computer Software clause in DFARS 252.227-7013.

Hewlett-Packard Company  
United States of America

Rights for non-DOD U.S. Government Departments and Agencies are as set forth in FAR 52.227-19(c)(1,2).

### Copyright Notices

© Copyright 1998-2004 Hewlett-Packard Development Company, L.P.

No part of this document may be copied, reproduced, or translated into another language without the prior written consent of Hewlett-Packard Company. The information contained in this material is subject to change without notice.

### Trademark Notices

Linux is a registered trademark of Linus Torvalds.

OpenLDAP is a registered trademark of the OpenLDAP Foundation.

### Acknowledgements

PREBOOT EXECUTION ENVIRONMENT (PXE) SERVER  
Copyright © 1996-1999 Intel Corporation.

TFTP SERVER  
Copyright © 1983, 1993  
The Regents of the University of California.

OpenLDAP  
Copyright 1999-2001 The OpenLDAP Foundation, Redwood City, California, USA.  
Portions Copyright © 1992-1996 Regents of the University of Michigan.

OpenSSL License  
Copyright © 1998-2001 The OpenSSLProject.  
Original SSLey License  
Copyright © 1995-1998 Eric Young (eay@cryptsoft.com)  
DHTML Calendar  
Copyright Mihai Bazon, 2002, 2003

## Technical Support

Please select Support & Services from the following web site:

<http://www.hp.com/managementsoftware/services>

There you will find contact information and details about the products, services, and support that HP OpenView offers.

The support site includes:

- Downloadable documentation
- Troubleshooting information
- Patches and updates
- Problem reporting
- Training information
- Support program information

## About this Guide

### Who this Guide is for

The Radia Extensions for Windows Installer assists everyone in your organization responsible for building, testing, integrating, troubleshooting, and managing Windows-based applications. Administrators or others responsible for application integration testing greatly benefit from the Install Analysis, State Analysis, and Windows Installer Packaging features.

End users and business units that rely on rapid application turnaround and deployment benefit by eliminating the time it takes to resolve conflicts between applications that are frequently the bottlenecks to deployment. These conflicts are easily isolated and resolved using the Radia Extensions for Windows Installer components in conjunction with the Radia Configuration Analyzer and the Radia Knowledge Base Manager.

### What this Guide is about

The *Radia Extensions for Windows Installer Getting Started Guide* contains introductory material and installation instructions for the Radia Extensions for Windows Installer components. These include:

- The Radia Packager for Windows Installer
- The Radia Extensions for Windows Installer Client Components

For more information and step-by-step instructions on how to use these components, see the *Radia Extensions for Windows Installer Guide*.

### I-Lab and Radia Extensions for Windows Installer Publications

Radia Extensions I-Lab users should use the Radia Extensions for Windows Installer publications for any Windows Installer packaging information they may require. Please note, however, that this document contains information for the Radia Extensions for Windows Installer, which licenses more functionality than the Radia Extensions I-Lab. The following Radia Extensions for Windows Installer features covered in this document are only licensed in the Radia Extensions I-Lab product for testing purposes within a laboratory environment:

*Preface*

- Advanced Features
- Application Insulation
- Application Insight

# Conventions

You should be aware of the following conventions used in this book.

**Table P.1 ~ Styles**

Element	Style	Example
References	<i>Italic</i>	See the <i>Publishing Applications and Content</i> chapter in this book.
Dialog boxes and windows	<b>Bold</b>	The <b>Radia System Explorer Security Information</b> dialog box opens.
Code	Andale Mono	radia_am.exe
Selections	<b>Bold</b>	Click <b>Next</b> to continue.

**Table P.2 ~ Usage**

Element	Style	Example
Drives (system, mapped, CD)	Italicized placeholder	<i>SystemDrive</i> :\Program Files\Novadigm might refer to C:\Program Files\Novadigm on your computer. <i>CDDrive</i> :\client\radia_am.exe might refer to D:\client\radia_am.exe on your computer.
Files (in the Radia Database)	All uppercase	PRIMARY
Domains (in the Radia Database)	All uppercase	PRIMARY.SOFTWARE May also be referred to as the SOFTWARE domain in the PRIMARY file.
Classes (in the Radia Database)	All uppercase	PRIMARY.SOFTWARE.ZSERVICE May also be referred to as the ZSERVICE class in the SOFTWARE domain in the PRIMARY file.

The table below describes terms that may be used interchangeably throughout this book.

**Table P.3 ~ Terminology\***

\* Depends on the context. May not always be able to substitute.

Term	May also be called
Application	software, service
Client	Radia Application Manager and/or Radia Software Manager
Computer	workstation, server
NOVADIGM domain	PRDMAINT domain <b>Note:</b> As of the 4.0 release of the database, the NOVADIGM domain is being renamed the PRDMAINT domain. Therefore, if you are using an earlier version, you will see the NOVADIGM domain in the database.
Radia Configuration Server	Manager, Active Component Server
Radia Configuration Server Database	Radia Database

**Table P.4 ~ Radia Name Changes (Radia 3 to Radia 4)**

Radia 3 Name	Radia 4 Name
Radia Advanced Publisher	Radia Packager for Windows Installer
Radia Advanced Publisher client	Radia Packager for Windows Installer client
Radia Application Analyzer	Radia Configuration Analyzer
Radia Publisher	Radia Packager -- Packages and publishes <i>non-Windows Installer</i> applications using Basic or Advanced mode
None	Radia Publisher – New product to publish Windows Installer packages and OS Images to the Radia Database in Basic or Advanced mode.



# Summary of Changes

This printing of the *Radia Extensions for Windows Installer Guide* contains the following changes to product names, information, and procedures.

## Product Name Changes

- The Radia Advanced Publisher is now called the **Radia Packager for Windows Installer**, to reflect its primary packaging function.

### Note

See the *Radia Publisher Guide* for details on the new Radia component used to publish Windows Installer based applications to the Radia Database.

- The Radia Application Analyzer is now called the **Radia Configuration Analyzer**. See the *Radia Configuration Analyzer Guide* for installation and usage information.
- The Radia Application Knowledge Base (AKB) is now called the **Radia Knowledge Base** of the **Radia Knowledge Base Manager**. See the *Radia Knowledge Base Manager Guide* for installation and usage information.

## Chapter 1: Introduction

- 4.0** Page 15, *About Packaging and Publishing with Radia*, new topic summarizing new or renamed products for packaging and publishing in Radia 4.0.
- 4.0** Page 17, *Radia Packager for Windows Menus*, new topic introduces the initial menu that opens when you start the Radia Packager for Windows Installer, as well as the alternate process menu available from the Radia Packager for Windows Installer program group.
- 4.0** Page 20, *Related Radia Components*, new topic discussing the roles of the Radia Publisher, the Radia Configuration Analyzer, and the Radia Knowledge Base Manager when packaging and publisher Windows Installer Applications using the Radia Extensions for Windows Installer.

## Chapter 2: Creating the Radia Extensions for Windows Installer Environment

- 4.0** Page 25, *Creating the Radia Extensions for Windows Installer Environment*, chapter title changed from *Installing the Radia Extensions for Windows Installer Components*.
- 4.0** Page 28, *Installing the Radia Packager for Windows Installer*, replacement topic for *Installing the Radia Advanced Publisher*, due to a name change. Updated some steps and all figures in the procedure since the previous release. A new icon is installed to the desktop at the end of the installation.
- 4.0** Page 36, *Installing Related Products*, new topic to refer users to the related guides that discuss how to install and use the Radia Configuration Analyzer, the Radia Knowledge Base Manager, and the Radia Publisher.

### Relocation Note

Chapters covering the installation and configuration of the Radia Configuration Analyzer and the Radia Knowledge Base Manager have been removed from this guide. Refer to the *Radia Configuration Analyzer Guide* or the *Radia Knowledge Base Manager Guide*, instead.

# Contents

- Preface ..... 5**
  - About this Guide ..... 5
  - Who this Guide is for ..... 5
  - What this Guide is about ..... 5
  - I-Lab and Radia Extensions for Windows Installer Publications ..... 5
  - Conventions ..... 7
  - Summary of Changes ..... 9
    - Product Name Changes ..... 9
  
- 1 Introduction ..... 13**
  - About Packaging and Publishing with Radia ..... 15
  - About the Radia Extensions for Windows Installer ..... 16
    - The Radia Extensions for Windows Installer Components ..... 16
      - Radia Packager for Windows Installer ..... 16
      - Radia MSI Editor (MSIEdit) ..... 19
    - Radia Extensions for Windows Installer Optional Client Components ..... 19
      - Application Insight ..... 20
      - Advanced Features for Windows Installer ..... 20
  - Related Radia Components ..... 20
    - Radia Publisher ..... 20
    - Radia Configuration Analyzer ..... 21
    - Radia Knowledge Base Manager ..... 21
  - Creating a Windows Installer Package ..... 21
  - Summary ..... 23
  
- 2 Creating the Radia Extensions for Windows Installer Environment 25**
  - Setting up your Radia Extensions for Windows Installer Lab Environment ..... 26
    - System Requirements ..... 26

Contents

Workstation Machine .....	26
Administrator Console Machine .....	26
Database Server Machine.....	27
Radia Knowledge Base Manager Machine.....	27
Setup 1 .....	27
Setup 2 .....	27
Installing the Radia Packager for Windows Installer .....	28
The Radia Extension for Windows Installer Client Components .....	35
Installing the Client Components.....	35
Installing Related Products.....	36
Installing and Configuring the Radia Configuration Analyzer .....	36
Installing and Configuring the Radia Application Knowledge Base.....	36
Installing the Radia Publisher.....	36
Summary .....	37
<b>Lists .....</b>	<b>39</b>
Figures.....	39
Tables.....	40
Procedures.....	41
<b>Index.....</b>	<b>43</b>



# Introduction

## **At the end of this chapter, you will:**

- Be familiar with the Radia Extensions for Windows Installer.
- Understand the components that comprise the Radia Extensions for Windows Installer.
- Understand the Radia Extensions for Windows Installer process for analyzing and packaging an application.
- Be able to describe how each of the components contributes to the process.

The Radia Extensions for Windows Installer is a management system designed to automate and simplify the enterprise application integration laboratory process. Use this product to build, test, and maintain application and installation packages. Together with the Radia Configuration Analyzer and Radia Knowledge Base Manager, use this product to analyze and troubleshoot applications and installation packages—even before they are deployed across your enterprise. When the packages are ready for deployment, use the Radia Publisher to promote the packages to the Radia Database.

■ **Windows Installer Packaging**

The Radia Packager for Windows Installer component gives you complete control over the resource gathering and analysis of Windows Installer packages. The complete packaging of an application typically takes less than an hour.

The Radia Extensions for Windows Installer complements your existing software distribution methods by building industry-standard Windows Installer packages that can be used with all distribution products.

The Radia Configuration Analyzer serves as the back end to software distribution and reduces the time required to package software for enterprise deployment.

Package contents can be saved in the Radia Application Knowledge Base as a historical record of the distribution. Having a complete analysis that focuses on all applications and their interactions prior to deployment strengthens your application evaluation and deployment process before applications reach the desktop when it is too late. Applications with inherent conflicts are identified.

■ **Intelligent Analysis**

In addition to execution-time resolution, conflicting applications are easily identified before deployment using resource profiles of any application or machine components. For those tough to find problems, like, "I don't know why, but the application runs on that machine, but not this one," a detailed trace analysis sorts out these problems in minutes.

The Radia Packager for Windows Installer provides a complete or selected component machine scan, and accurate installation state creation, to supplement its impact and profile state analysis. All states can be merged together or compared, giving a composite view of the components of one or more applications or just the shared resources.

■ **Simplifies the Complicated**

The Radia Configuration Analyzer simplifies your view of managing this complicated environment. Backed by the Radia Application Knowledge Base (an ODBC-compliant, SQL Server or Oracle database), imported State Files keep a detailed history of all of the resources needed for an application to run successfully. Powerful features of the console identify application conflicts between two or more applications with a mouse click. With this complete set of historical information at your fingertips, you can easily determine the impact on your environment of:

- Deploying a new application
- Upgrading an existing application
- Adding or modifying modules, registry keys, or data files

■ **Publishing to Radia Database**

The Radia Publisher offers a streamlined publishing interface with minimal steps to publish

the Windows Installer packages to the Radia Database. Once published to the Radia Database, they are available for policy-based, enterprise-wide Radia deployment as managed applications.

## About Packaging and Publishing with Radia

**Packaging** is the process of identifying resources, editing the installation attributes of the resources, defining how the resources are to be installed, and saving the resources and installation instructions in a machine-readable file format. A package typically contains one or more files and configuration settings.

**Publishing** is the process of importing a package and its imbedded information to the Radia Database (AKA the Radia Configuration Server Database). A package must be published before its content can be distributed and deployed into your environment.

Radia offers many different packaging and publishing options through multiple tools. Make note of the different types of resource packages you will create and publish, then choose your Radia packaging and publishing products as required.

- If you're **packaging** Windows Installer files, use this guide.
- If you're **publishing** Windows Installer files, use the **Radia Publisher**. (See the *Radia Publisher Guide*).
- To **package** and **publish** all other types of files and applications, use the **Radia Packager**. (See the *Radia Application Manager Guide* or the *Radia Software Manager Guide*).

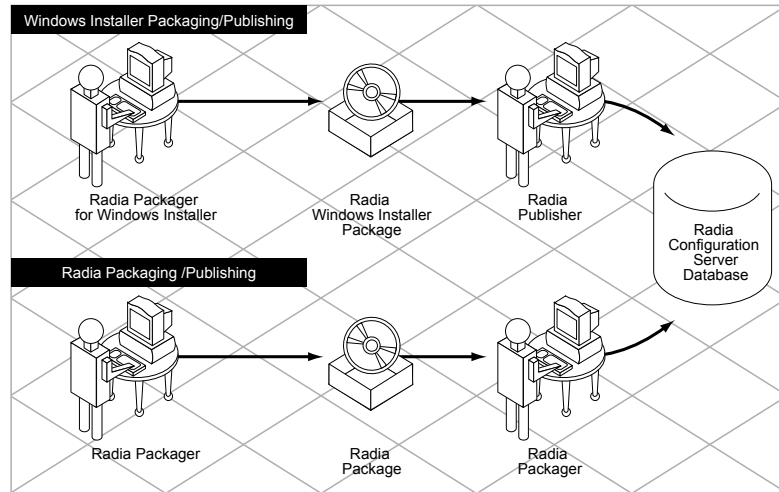


Figure 1.1 ~ Radia Packaging/Publishing options.

---

## About the Radia Extensions for Windows Installer

Intelligent application extensions are easily introduced to a server or desktop to ensure predictable production application behavior. The Radia Extensions for Windows Installer seamlessly integrates applications and ensures that all of these applications run as expected. This ensures better control over application deployment and behavior and reduces the overhead associated with testing, integration, deployment, and run-time support.

## The Radia Extensions for Windows Installer Components

The Radia Extensions for Windows Installer is comprised of many different components that you can use to create a Windows Installer package.

### Radia Packager for Windows Installer

Radia Packager for Windows Installer is a suite of components that let you easily create, modify, customize, and manage Windows Installer Packages. The components installed with this product are discussed below.



## Radia Packager for Windows Menus

Installing the Radia Packager for Windows Installer places the **Radia Packager for WI** icon on your desktop. This icon opens a quick-start menu with Typical and Custom packaging session options, as shown in Figure 1.2. The Typical option from this menu begins a streamlined packaging session; the Custom options launch the appropriate State, Library or Package Wizard, based on your selection.

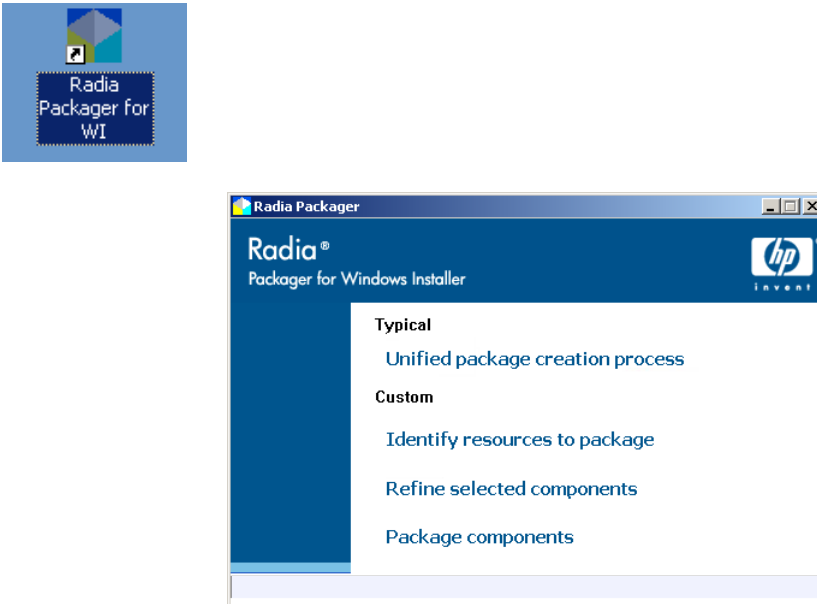


Figure 1.2 ~ Radia Extensions for Windows Installer Icon and initial menu.

---

An alternative, process-based packaging menu is also available. To access it, select **Radia Packager for WI Menu** from the Radia Packager for Windows Installer program group. As shown in Figure 1.3, this alternate Radia Packager for Windows Installer Menu provides a flowchart of the process, as well as a portal to the different components you can use to analyze applications, build packages, and perform any other Windows application integration tasks.

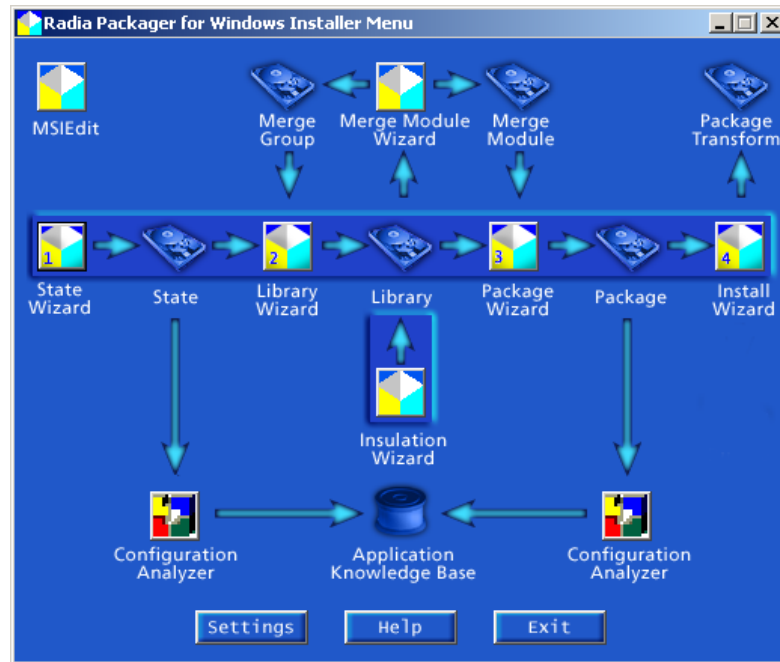


Figure 1.3 ~ Alternate Radia Extensions for Windows Installer Menu includes a Process Flow.

## State Wizard

The first step in any application packaging or analysis project is to gather information for an application. The State Wizard starts this process by providing comprehensive tools for gathering complete information on any application, whether you are repackaging an application that already has an installation program or packaging any running application. Information collected by the State Wizard is stored in a State File. The State Wizard also provides you with tools for managing State Files, allowing you to view data, merge State Files, and delete State Files, among other tasks.

## Library Wizard

After you have gathered information on an application, you need to gather the files that the application needs to run to a single location. This location is called a Library. The Library Wizard guides you through the steps required to select resources you want to include in a Library. Any modifications that need to be made to an application before packaging, such as setting NTFS security options or creating substitutions that need to be made upon installation are set in the Library Wizard.

## Package Wizard

The Package Wizard takes a Library and generates a fully compliant Windows Installer package for your application.

## Install Wizard

The Install Wizard provides features for managing your Windows Installer packages once they have been created and are ready for testing or production. The Install Wizard also gives you the ability to manage packages and create Transform (MST) files.

## Insulation Wizard

If selected for installation, the Insulation Wizard provides you with the optional ability of setting side-by-side insulation settings within a Library that will be included when the package is created.

## Merge Module Wizard

The Merge Module Wizard supports the creation, modification, viewing, and deletion of merge module components (in Windows Installer .MSM format) and Merge Module Groups. See the Radia Packager for Windows Installer Help topic, *Working with Merge Modules*, for more information.

## Radia MSI Editor (MSIEdit)

MSIEdit allows you direct access to the Windows Installer database tables through an easy-to-use interface. You can view, edit, or create Package Files (.MSI), Merge Module Files (.MSM), and Transform Files (.MST).

### Note

Packages created by the Radia Package Wizard conform to Windows Installer 'best practices' and should have no need to be modified.

## Radia Extensions for Windows Installer Optional Client Components

In addition to the tools you can use in your Radia Extensions for Windows Installer Lab environment, there are optional components available that can be added to your environment to further stabilize your application environment, extend Windows Installer functionality, and enhance troubleshooting.

## Application Insight

The Radia Extensions for Windows Installer has a desktop component that allows you to quickly troubleshoot an application. **Application Insight** watches an application while it runs, gathering information about all the resources used and referenced by the application to run properly, including API and event call information. This information is then imported into the Radia Application Knowledge Base for analysis. If the application is working on one machine in the lab, but not on another, you can compare states to find the problem quickly.

## Advanced Features for Windows Installer

The Radia Packager for Windows Installer, along with the Advanced Features for Windows Installer, enables:

- Setting of the complete range of NTFS permissions for resources in a package (files, folders, and registry)
- Off-peak delivery of the MSI application's components disabled for every user
- The application for each user as he logs on

### Note to I-Lab Users

Radia Advanced Features are only licensed in the Radia Extensions I-Lab product for testing purposes within a laboratory environment.

Coordination between the Radia Application Manager and the Advanced Features for Windows Installer client enables Windows Installer Machine/User support.

On an NTFS system, users who are not entitled to an application will not be able to run the application, even if they try to launch the executable.

## Related Radia Components

### Radia Publisher

The Radia Packager for Windows Installer no longer supports the publishing of packages to the Radia database. After building and testing a Windows Installer package, use the Radia Publisher to promote your Windows Installer packages into the Radia Database. The Radia Publisher is one of the tools installed with the Radia Administrator Workstation. See the *Radia Publisher Guide* for more information.

## Radia Configuration Analyzer

The Radia Configuration Analyzer provides a powerful console for viewing, storing, and comparing application data. Backed by a SQL or Oracle database, the Configuration Analyzer allows you to import State Files created by the State Wizard or the Package Wizard. This will allow you to compare application information for conflicts before creating packages for deployment and to compare these packages with applications that have been deployed. See the *Radia Configuration Analyzer Guide* for more information.

## Radia Knowledge Base Manager

The Radia Knowledge Base Manager contains an automated import capability. The Knowledge Base Manager runs as a Windows service on any Windows NT based machine (preferably Windows 2000). It communicates with a SQL Server database through an ODBC system DSN and is capable of importing several different types of State Files including:

- Radia Configuration Server Service/Package component extracts
- State files built by the Radia Extensions for Windows Installer components
  - Radia Packager for Windows Installer
  - Application execution traces and profiles
- Radia Patch Manager State files
- Radia Usage Manager collection files

The Knowledge Base Manager is configured through a Control Panel application that allows the administrator to define a set of automated import directories that the Knowledge Base Manager watches and manages. These are simply Windows registry settings that can be created and managed through other Radia means if necessary.

See the *Radia Knowledge Base Manager Guide* for more information.

### Note

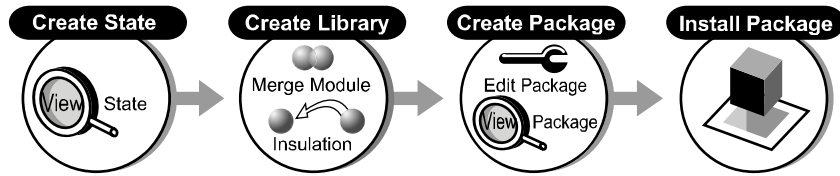
The Knowledge Base Manager service must be stopped and restarted for any changes to take effect.

## Creating a Windows Installer Package

The creation of a Windows Installer package with the Radia Packager for Windows Installer is comprised of three main steps. These steps can be performed in a single, unified packaging session, or, they can be performed individually, depending on your preferences and customization needs.

- Create a State File
- Create a Library

- Create the Package



*Figure 1.4 ~ Windows Installer package creation and publishing.*

---

After you create a package using the Radia Packager for Windows Installer, you can test and modify the package, as necessary. When you are ready to distribute the package, use the following tools:

- If you are using Radia to manage the deployment of the Windows Installer package to clients, use the Radia Publisher to publish / promote the package to the Radia Database.

OR

- If you are not using Radia to deploy the Windows Installer Package, use the Install Wizard of the Radia Packager for Windows Installer to distribute the package to an outside location.

## Summary

- The Radia Packager for Windows Installer is comprised of many user-friendly wizards designed to streamline your publishing process.
- Optional client components are available for use with Radia Extensions for Windows Installer.
- Related Radia components used in Windows Installer packaging and publishing environments include the Radia Publisher, the Radia Configuration Analyzer, and the Radia Knowledge Base Manager.





# Creating the Radia Extensions for Windows Installer Environment

## **At the end of this chapter, you will:**

- Be able to set up a lab environment for packaging and publishing Windows Installer application to the Radia Database.
- Understand the prerequisites and system requirements for the Radia Extensions for Windows Installer.
- Be able to install the Radia Extensions for Windows Installer components.
- Be able to install the related components for packaging, analyzing, and publishing Windows Installer applications to the Radia Database.

# Setting up your Radia Extensions for Windows Installer Lab Environment

The Radia Extensions for Windows Installer can be installed in your lab environment in many different ways. Determine the method that best fits your needs. In setting up your lab environment, we recommend having at least four machines:

- **Packaging Server**  
Install the Radia Packager for Windows Installer on a server to run it over the network. Install the Radia Knowledge Base Manager on this machine as well. Using a packaging server is optional, but preferred.
- **Workstation 1**  
If a packaging server is *not* being used, install the Radia Packager for Windows Installer on a workstation. This workstation will be used to create the application packages and state files.
- **Workstation 2**  
Use this machine to test the packages created on Workstation 1.
- **Database Server for the Radia Knowledge Base Manager**  
Install an Oracle or SQL Server on this machine to support the Radia Knowledge Base Manager.
- **Administrator Console Machine**  
Install the Radia Configuration Analyzer on the Administrative Console Machine. The Radia Configuration Analyzer is the graphical interface to the Radia Application Knowledge Base. If a Packaging Server is not being used, also install the Radia Knowledge Base manager on this machine.

## System Requirements

### Workstation Machine

The Workstation Machine should be representative of the computers in your environment.

- Windows 9x, NT 4.0, 2000, XP, Server 2003
- Windows 9x – 8 MB RAM; Windows NT 4.0 - 12MB; Windows 2000, XP – 64 MB
- 5 MB disk space minimum, 50 MB preferred
- CPU: Intel 486 DX or higher
- Monitor: 256-color VGA or higher

### Administrator Console Machine

- Windows 9x, NT 4.0, 2000, XP, Server 2003
- 64 MB RAM minimum, 128 MB or above preferred

- CPU: Intel 486 DX or higher, Pentium recommended
- Monitor: 256-color VGA minimum

## Database Server Machine

- Windows 98, NT 4.0, 2000, XP, Server 2003
- 512 MB or above preferred
- SQL Server or Oracle database
- 200 MB disk space minimum. Varies according to the size of the Radia Knowledge Base database

## Radia Knowledge Base Manager Machine

- Windows NT 4.0, 2000, XP, Server 2003
- 128 MB RAM minimum, 512 MB or above recommended

### Note

HP recommends installing the Radia Knowledge Base Manager on a separate machine from the Database Server because of disk contentions. If you have a dedicated packaging or publishing server, you could alternatively install the Radia Knowledge Base Manager there.

## Setup 1

One method of setting up Workstation 1 in your lab is to perform the following steps:

1. Begin with a clean machine (nothing installed but the operating system).
2. Install the Radia Packager for Windows Installer.
3. Change settings in the Radia Packager for Windows Installer to point to a network location.
4. Create the before scan of an installation analysis and save it as a baseline image of the machine in this state.

## Setup 2

Another method of setting up your machine is to:

1. Install the Radia Packager for Windows Installer on a server or other location in your network.

2. Modify the Radia Packager for Windows Installer settings so that the Local State Path points to the test machine and all other settings reference the server. Save these settings as **settings.ini** in the **\AdvPub\Bin** directory.
3. From the test machine, create a local shortcut to the Radia Packager for Windows Installer program, PkgMenu.exe, on the server. By default, PkgMenu.exe is located in: `<SystemDrive>\ProgramFiles\Novadigm\AdvPub\Bin\`.

#### Note

To launch the Process Menu, create a shortcut to AdvPub.exe instead of PkgMenu.exe. AdvPub.exe is also located in the `\AdvPub\Bin` directory.

4. Create a baseline analysis of your test machine. This baseline scan can be used as the "before" analysis for any Install Analysis performed on the same test machine build.

## Installing the Radia Packager for Windows Installer

Use this procedure to install the Radia Packager for Windows Installer. Before you begin, locate your Radia Packager for Windows Installer **serial number**.

### To install the Radia Packager for Windows Installer

1. Navigate to the **Radia Packager for Windows Installer** directory within your **Radia Extensions for Windows Installer** media.
2. Double-click **Package.Msi**.  
The **Radia Packager for Windows Installer Welcome** window opens.



*Figure 2.1 ~ Radia Packager for Windows Installer Welcome window.*

---

**3. Click Next.**

The **End-User License Agreement** window opens.

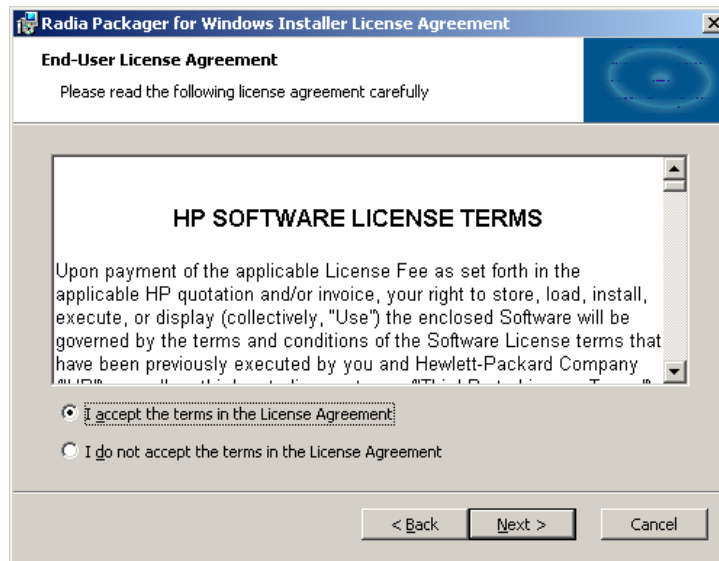
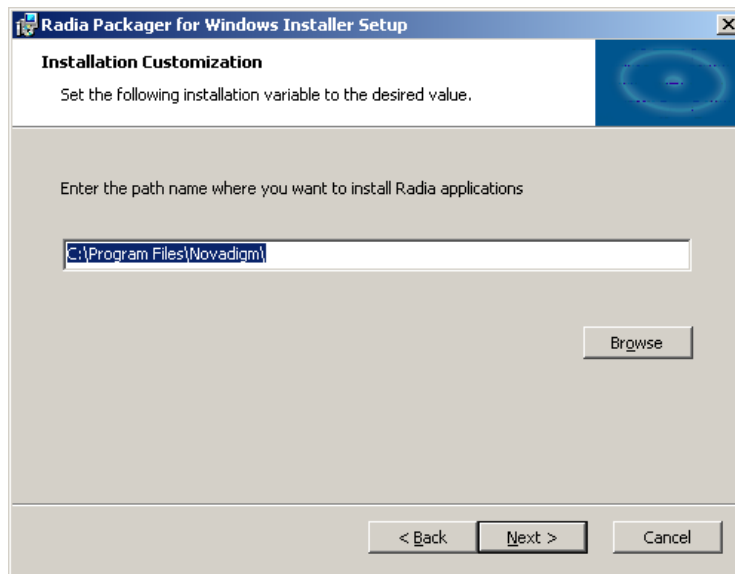


Figure 2.2 ~ HP End-User License Agreement window.

---

4. Read and accept the HP Software License Terms and click **Next**. The **Installation Path** window opens.



*Figure 2.3 ~ Enter the path name where you want to install the Radia Packager for Windows Installer.*

---

5. Accept the default installation directory, type a new directory, or click **Browse** to manually select a location.
6. Click **Next**.

The **Radia Packager for Windows Installer Serial Number** window opens.

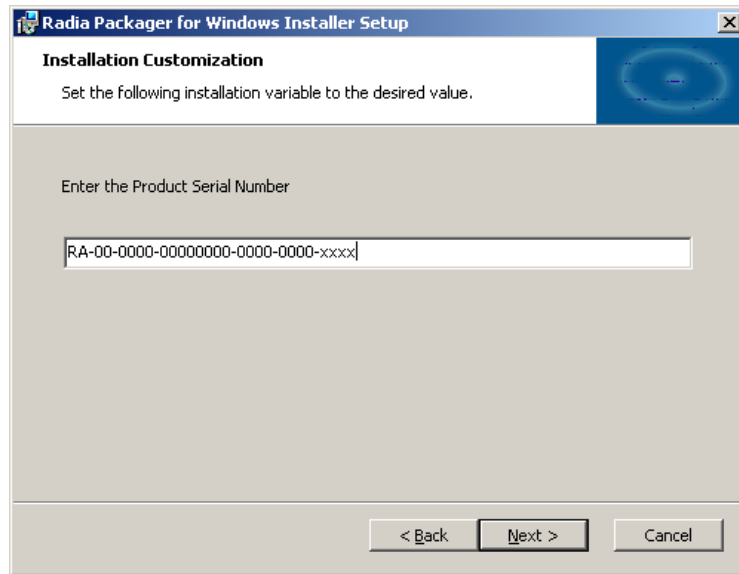


Figure 2.4 ~ Enter the Radia Packager for Windows Installer serial number.

---

7. Type your Radia Packager for Windows Installer serial number.
8. Click **Next**.  
The **Installation Customization** window opens.



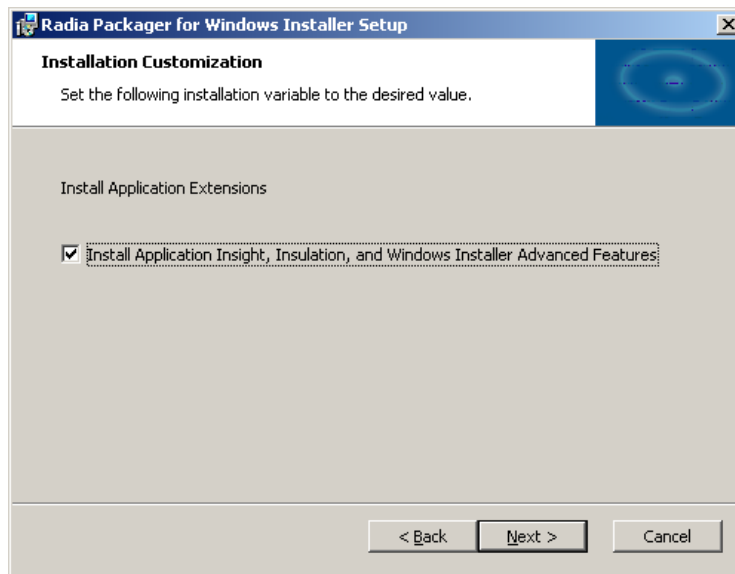


Figure 2.5 ~ Installation Customization window to install Application Extensions.

9. Select this check box if you would like to install the Client Application Extensions for Application Insight, Insulation, and Windows Installer Advanced Features on this machine, and then click **Next**.

#### Note

See *The Radia Extension for Windows Installer Client Components* on page 35 for more information.

The **Ready to Install** window opens.

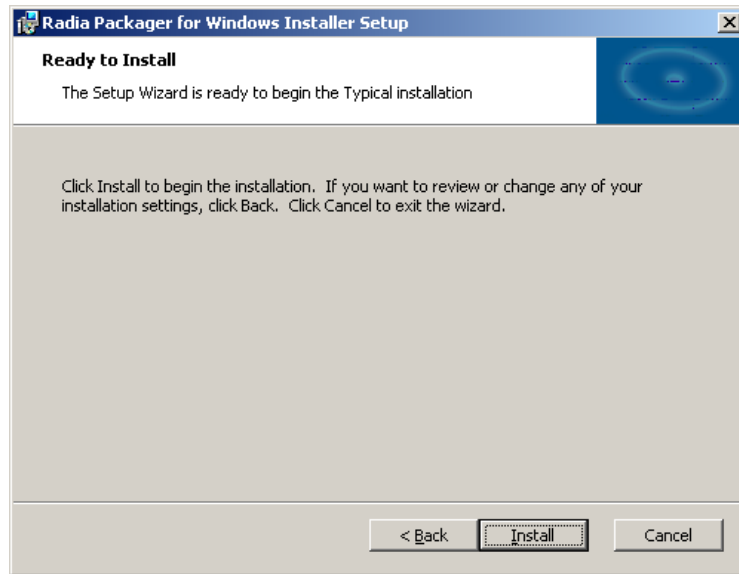


Figure 2.6 ~ Install the Radia Packager for Windows Installer.

---

10. Click **Back** to change any of the installation settings or click **Install** to continue the installation.

The Radia Packager for Windows Installer is installed.

11. Click **Finish**.

You have successfully installed the Radia Packager for Windows Installer. Following installation, you can launch the Radia Packager for Windows Installer from the desktop icon shown in Figure 2.7, or the **Radia Packager for Windows Installer** program group.

---



Figure 2.7 ~ Shortcut for Radia Packager for Windows Installer added to Desktop.

---

See the *Radia Packager for Windows Installer Guide* for details on using the packaging features.

---

# The Radia Extension for Windows Installer Client Components

Radia Extensions for Windows Installer requires particular components to be installed on the client computer if you are going to use certain features. The client components consist of:

- **Radia Advanced Features** (AFSetup.exe/AFSetup.ini) – Install this component in order to enable Radia's Enhanced Windows Installer Machine/User support or if you plan to use the advanced permissions available when creating Windows Installer packages.

## Note

Radia Machine/User support is not supported in Radia 2.x.

- **Radia Packager for Windows Installer client** (APSetup.exe/APSetup.ini) – Install this component if you will be accessing the Radia Packager for Windows Installer remotely, and would like additional functionality, including application tracing and profiling.
- **Radia Application Insight** (AISetup.exe/AISetup.ini) – Install this component in a lab environment to monitor installed applications and to assist with the troubleshooting process.

## Installing the Client Components

### To install the Client Components when installing Radia Packager for Windows Installer

To install the client components on any machine for which you are also installing the Radia Packager for Windows Installer, run the setup program for Radia Packager for Windows Installer. When prompted to install the Application Extensions on the **Customization Installation** window, select the checkbox next to the following selection:

- Install Application Insight, Insulation, and Windows Installer Advanced Features

Figure 2.5 on page 35 shows an example of where to make this selection.

### To install the Client Components without Radia Packager for Windows Installer

To install the client components separately from the Radia Packager for Windows Installer, use any of the following methods:

- Double-click the executable file for the component.
- Execute the installs using a command-line.
- Deploy the files using Radia.

The executables to install each of the client components are located in the **Client Component** subdirectories within your **Radia Extensions for Windows Installer** media. Each executable is

accompanied by an .ini file that contains default setup information. To modify the default information, open the .ini file using a text editor.

## **Installing Related Products**

### **Installing and Configuring the Radia Configuration Analyzer**

See the *Radia Configuration Analyzer Guide* for details on how to install and configure the Radia Configuration Analyzer.

### **Installing and Configuring the Radia Application Knowledge Base**

See the *Radia Knowledge Base Manager Guide* for details on how to install and configure the Radia Application Knowledge Base.

### **Installing the Radia Publisher**

The Radia Publisher is one of the tools installed with the Radia Administrator Workstation. See the *Radia Publisher Guide* for details on how to install and use it.

## Summary

- Install the Radia Packager for Windows Installer.
- During installation, you have the option to install other Radia Extensions for Windows Installer components.
- Radia Extensions for Windows Installer includes optional client components.
- Optionally, install and configure the Radia Configuration Analyzer.
- Optionally, install the Radia Application Knowledge Base and define your auto-import directories.
- Optionally, install the Radia Publisher to publish/promote the Windows Installer packages to the Radia Database for Radia distribution.



## Figures

Figure 1.1 ~ Radia Packaging/Publishing options.....	16
Figure 1.2 ~ Radia Extensions for Windows Installer Icon and initial menu.....	17
Figure 1.3 ~ Alternate Radia Extensions for Windows Installer Menu includes a Process Flow. ..	18
Figure 1.4 ~ Windows Installer package creation and publishing. ....	22
Figure 2.1 ~ Radia Packager for Windows Installer Welcome window.....	29
Figure 2.2 ~ HP End-User License Agreement window.....	30
Figure 2.3 ~ Enter the path name where you want to install the Radia Packager for Windows Installer.....	31
Figure 2.4 ~ Enter the Radia Packager for Windows Installer serial number. ....	32
Figure 2.5 ~ Installation Customization window to install Application Extensions.....	33
Figure 2.6 ~ Install the Radia Packager for Windows Installer. ....	34
Figure 2.7 ~ Shortcut for Radia Packager for Windows Installer added to Desktop. ....	34

## Tables

Table P.1 ~ Styles.....	7
Table P.2 ~ Usage.....	7
Table P.3 ~ Terminology* .....	8
Table P.4 ~ Radia Name Changes (Radia 3 to Radia 4).....	8



# Procedures

To install the Radia Packager for Windows Installer .....28  
To install the Client Components when installing Radia Packager for Windows Installer .....35  
To install the Client Components without Radia Packager for Windows Installer .....35



# Index

## A

- Administrator Console system requirements ..... 26
- Advanced Features for Windows Installer..... 20
- AFSetup.exe/AFSetup.ini..... 35
- AISetup.exe/AISetup.ini..... 35
- Application Insight ..... 20
- application tracing..... 20
- APSetup.exe/APSetup.ini..... 35

## B

- Baseline State ..... 28

## C

- client components ..... 35
- customer support ..... 4

## D

- database server system requirements..... 27

## I

- I-Lab ..... 5, 20
- Install Wizard ..... 19
- Insulation Wizard ..... 19

## L

- Library Wizard ..... 18

## M

- MSIEdit ..... *See* Radia MSI Editor

## P

- package

- promoting to Radia ..... 20
- publishing to Radia ..... 20
- Package Wizard..... 19
- packages for Windows Installer ..... 14
- publishing to Radia Database ..... 14

## R

- Radia Advanced Features..... 35
- Radia Application Insight..... 35
- Radia Application Knowledge Base ..... 14
  - installing and configuring ..... 36
- Radia Configuration Analyzer..... 14, 20
  - installing and configuring ..... 36
- Radia Extensions for Windows Installer
  - client components..... 35
  - components..... 16
  - definition ..... 14
  - Lab Environment ..... 26
  - optional components ..... 19
  - system requirements ..... 26, 27
    - administrator console ..... 26
    - database server ..... 27
    - workstation ..... 26
- Radia Extensions for Windows Installer, components list..... 16
- Radia Extensions I-Lab ..... 5
- Radia Knowledge Base Manager
  - system requirements ..... 27
- Radia MSI Editor ..... 19
- Radia Packager for Windows Installer
  - description ..... 16
  - features ..... 20
  - installing..... 28

*Index*

Radia Packager for Windows Installer client ..... 35  
Radia Publisher ..... 20

**S**

State Files ..... 14  
State Wizard ..... 18  
system requirements  
    database server ..... 27  
    Radia Extensions for Windows Installer ..... 26  
    Radia Knowledge Base Manager ..... 27

**T**

technical support ..... 4

**W**

Windows Installer  
    advanced features ..... 20  
    creating a package ..... 21  
    packaging ..... 14  
    publishing to Radia Database ..... 14  
wizards  
    install ..... 19  
    insulation ..... 19  
    library ..... 18  
    merge module ..... 19  
    package ..... 19  
    state ..... 18  
Workstation Machine system requirements ..... 26