

HP Release Control

Open Localization Toolkit

Software Version: 5.00

User Guide

Document Release Date: January 2010

Software Release Date: January 2010



Legal Notices

Warranty

The only warranties for HP products and services are set forth in the express warranty statements accompanying such products and services. Nothing herein should be construed as constituting an additional warranty. HP shall not be liable for technical or editorial errors or omissions contained herein.

The information contained herein is subject to change without notice.

Restricted Rights Legend

Confidential computer software. Valid license from HP required for possession, use or copying. Consistent with FAR 12.211 and 12.212, Commercial Computer Software, Computer Software Documentation, and Technical Data for Commercial Items are licensed to the U.S. Government under vendor's standard commercial license.

Copyright Notices

Copyright 2006 - 2010 Hewlett-Packard Development Company, L.P

Trademark Notices

Adobe® is a trademark of Adobe Systems Incorporated.

Intel®, Intel® Itanium®, Intel® Xeon™, and Pentium® are trademarks or registered trademarks of Intel Corporation

or its subsidiaries in the United States and other countries.

Java™ is a U.S. trademark of Sun Microsystems, Inc.

Microsoft®, Windows®, and Windows® XP are U.S. registered trademarks of Microsoft Corporation.

Microsoft Vista® is either a registered trademark or trademark of Microsoft Corporation in the United States and/or other countries.

Oracle® is a registered U.S. trademark of Oracle Corporation, Redwood City, California.

UNIX® is a registered trademark of The Open Group.

Documentation Updates

The title page of this document contains the following identifying information:

- Software Version number, which indicates the software version.
- Document Release Date, which changes each time the document is updated.
- Software Release Date, which indicates the release date of this version of the software.

To check for recent updates, or to verify that you are using the most recent edition of this document, go to your HP Partner Portal and sign in. To locate your regional partner portal and register, go to the following URL:

http://www.hp.com/partnerlearning/partner_portal_access.html

Support

Visit the HP Software Support web site at:

<http://www.hp.com/go/hpsoftwaresupport>

This web site provides contact information and details about the products, services, and support that HP Software offers.

HP Software online support provides customer self-solve capabilities. It provides a fast and efficient way to access interactive technical support tools needed to manage your business. As a valued support customer, you can benefit by using the support web site to:

- Search for knowledge documents of interest
- Submit and track support cases and enhancement requests
- Download software patches
- Manage support contracts
- Look up HP support contacts
- Review information about available services
- Enter into discussions with other software customers
- Research and register for software training

Most of the support areas require that you register as an HP Passport user and sign in. Many also require a support contract. To register for an HP Passport ID, go to:

<http://h20229.www2.hp.com/passport-registration.html>

To find more information about access levels, go to:

http://h20230.www2.hp.com/new_access_levels.jsp

Table of Contents

Chapter 1: Introducing the HP Release Control	
Open Localization Toolkit	7
HP Language Builder Overview	8
Language Builder Configuration File	8
System Requirements	9
Chapter 2: Working With Language Builder for HP Release Control	11
Adding a New Language to HP Release Control	11
Language Builder Window	18
Languages Selection Dialog Box.....	20
Index	23

Table of Contents

1

Introducing the HP Release Control Open Localization Toolkit

HP Release Control Open Localization Toolkit is a package that enables you to extend language capabilities of HP Release Control.

HP Release Control Open Localization Toolkit includes the HP Language Builder. You use Language Builder to export content that can be translated from the HP software product. After the content is translated, you create a language pack to deploy in the HP software product.

This chapter includes:

- HP Language Builder Overview on page 8
- Language Builder Configuration File on page 8
- System Requirements on page 9

HP Language Builder Overview

HP Language Builder provides the following functionality:

Export

You use the **Export** option to extract translatable content from the HP software product. The content is extracted as a set of localization files in a specific folder structure as described in "Translating Exported Content" on page 21.

Language Installer

You use the **Create Language Installer** option to import translated content into a new language pack. The new language pack can then be deployed in the HP software product.

Language Builder Configuration File

Language Builder exports and imports resources based on a configuration file that is compatible with your HP software product.

Language Builder includes a HP Release Control configuration file.

Before running Language Builder, you may need to modify the configuration file. For more information, see "Adding a New Language to HP Release Control" on page 11.

System Requirements

To install and run Language Builder, your computer must meet the following minimum system requirements:

Memory (RAM)	Minimum of 1 GB
Free Disk Space	10 MB of free disk space for application files and folders You must also have an additional 500 MB of free disk space for storing translated content folders.
Operating System	<ul style="list-style-type: none"> ▶ Windows Server 2003 ▶ Windows Server 2003 R2 ▶ Windows Server 2008
Color Settings	Minimum of High Color (16 bit)
Graphics Card	Graphics card with 4 MB video memory (8 MB and above recommended)
Software Prerequisites	Java Runtime Environment 1.6 or later (for installation package and instructions, see http://java.sun.com).

2

Working With Language Builder for HP Release Control

This chapter describes how to export content from HP Release Control using Language Builder, translate the exported content, and use the content to create a new language pack to be deployed in HP Release Control.

This chapter includes:

- ▶ Adding a New Language to HP Release Control on page 11
- ▶ Language Builder Window on page 18
- ▶ Languages Selection Dialog Box on page 20

Adding a New Language to HP Release Control

This section is intended for software localization professionals. It assumes some understanding of localizing software products, knowledge of which items need to be translated, and knowledge of the relevant translation tools.

To add a new language in HP Release Control:

1 Install Language Builder

Click the **LanguageBuilder-2.01.000-WinNT4.0.msi** file located in the **Setup** folder of your HP Release Control installation disk and follow the instructions in the wizard.

2 Copy HP Release Control-specific configuration files for the Language Builder to the Language Builder installation root directory.

- a** Go to `<HP Release Control installation directory>\examples\language-builder` and copy the following files:

- **cultures.xml**
- **RC_I10nContext.xml**
- b** Paste the above files into the **<Language Builder installation root>** directory
- 3** Configure the **<HP Release Control installation directory>\examples\language-builder\RC_config.xml** file as follows:
 - a** Ensure that the default locations specified in the following properties are correct:
 - **ProductRoot.** The location of the product resource files (.jar)
 - **ProductLabelsLocation.** The location to which you will export the HP Release Control files that you want to translate.

Note: By default, these properties are set to the default HP Release Control installation directory. If you installed HP Release Control on a different directory, modify these properties to match the new path.

- 4** Configure the **cultures.xml** file (that you pasted into **<Language Builder installation root>** directory).

This file defines the languages that are supported by the Language Builder by default. These are the languages that Language Builder recognize when creating a language pack.

If you added a new supported language, add the following entry into this file:

```
<node name="Language display name">  
  <attr name="localeDisplay" value="Language locale"/>  
</node>
```

For example:

```
<node name="French">  
  <attr name="localeDisplay" value="fr"/>  
</node>
```

5 Download the **labels and terms** files that you want to translate from HP Release Control.

- a** Log on to HP Release Control and Select **Module > Administrator > Configuration > Labels and Terms > Default**.
- b** Under the default node, select the relevant **.properties** files that you want to translate and download the files.

To download a file, click **Download: <file>** in the right pane.

Export the file to the directory specified in the **ProductLabelsLocation** property (see step 3 on page 12), by default **<HP Release Control installation directory>\examples\language-builder**

6 Specify a configuration file and working space in the Language Builder.



- a** Start the Language Builder by double-clicking the **LB** button on your desktop. (For more details, see "Language Builder Window" on page 18.)

- b** In the **Configuration** box, specify a configuration file.

Browse to **<HP Release Control installation directory>\examples\language-builder\RC_config.xml** and click **OK**.

- c** Create a folder on your local drive which will be used as your work space. You will import translatable files into this directory.
- d** In the **Working Space** box, browse to the location of the folder you created above and click **Open**.

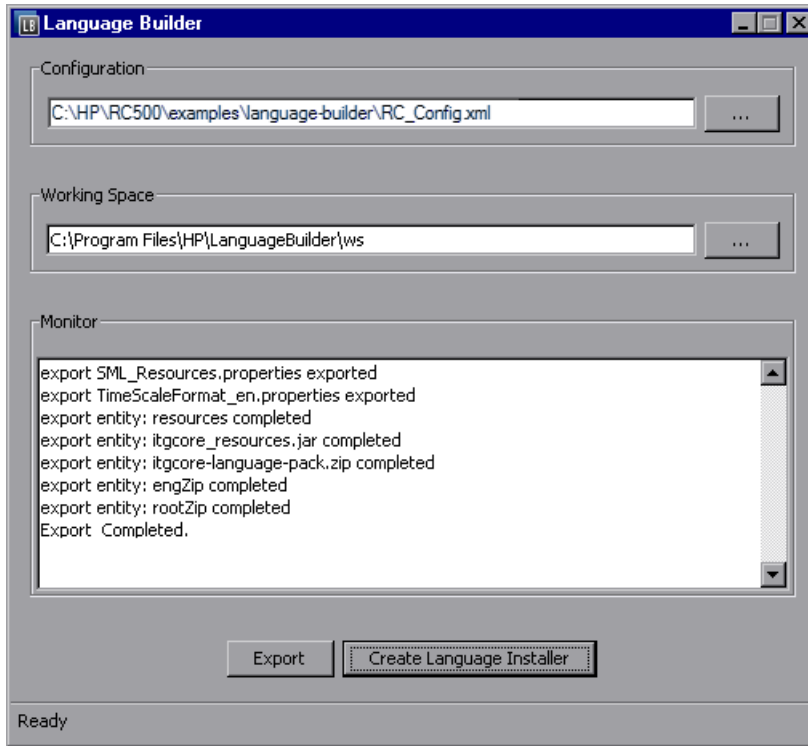
Note: To set default values for the configuration file and working space folders, see "Setting Default Values in the Language Builder" on page 17

7 Export translatable files using the Language Builder.

- a** In the Language Builder, click **Export**. The status bar displays the export progress. The **Monitor** box lists the exported files.

While exporting, Language Builder creates a new folder named **orig** in the working space folder, containing the exported content.

The following example illustrates a completed export:



b Click **Close** to exit Language Builder.

The **orig** folder content is now ready to be translated.

- 8** Translate the content exported to the **orig** folder in your working space directory.
 - a** Create a copy of the **orig** folder that was created during the export process and rename it to **<new_lang>** according to the abbreviation for the target language locale.
 - b** Navigate to **<new_lang folder path>** and do the following:
 - ▶ Translate the relevant content of each file in **\product labels** and **\ResourcesZip.zip\Resources**.
 - ▶ Add the target language abbreviation to each file name as follows: **<file_name>_<new_lang>.properties**

9 Create a language pack.

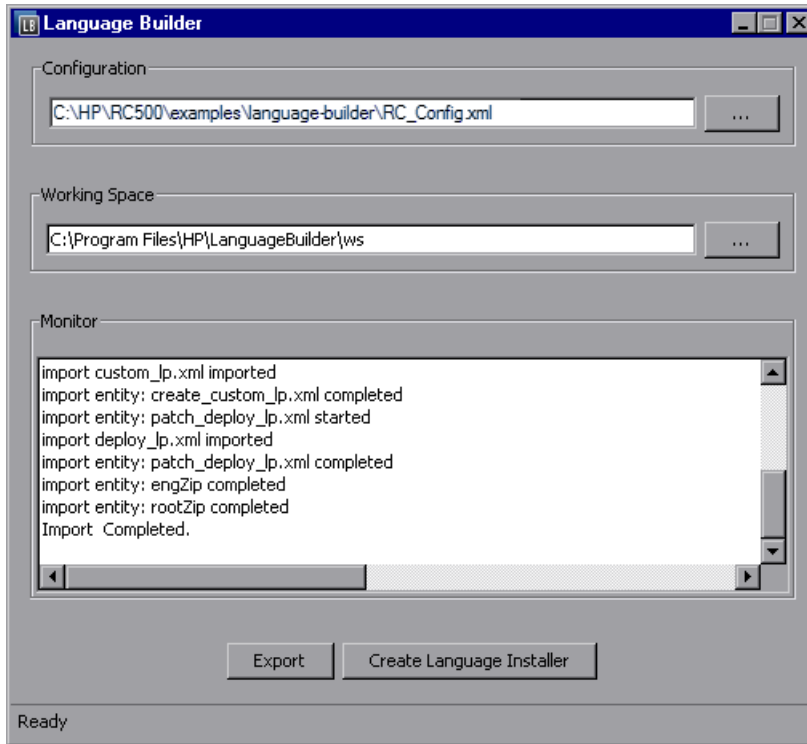
- a Copy the <new_lang> folder to the working space you created for the export process. The working space should now contain several folders, including **orig** and each translation language, for example, <new_lang1>, <new_lang2>, and <new_lang3>.

Caution: Do not delete or move the **orig** folder from the working space folder.

- b Click the **Create Language Installer** button. The **Languages Selection** dialog box opens. (For more details, see "Languages Selection Dialog Box" on page 20.)
- c Select the target languages. Make sure that the languages correspond with the <new_lang> folders.

When you click **Start**, Language Builder begins creating a language pack for each language you selected.

The following example illustrates a completed import:



Note: To view the report, navigate to: <working space folder>\<new_lang>.html.

10 Upload the **labels and terms** files.

- a** Log on to HP Release Control and Select **Module > Administrator > Configuration > Labels and Terms > Default**.
- b** Under the default node, select the relevant **labels.properties** files that you want translated.
- c** For each file, click **Upload File** to import the file to the HP Release Control system. The files are located in the same directory to which you downloaded them in step 5 on page 13 (by default **<HP Release Control installation directory>\examples\language-builder**).

- d Save and activate your configuration changes in HP Release Control.
- 11** Select the new language in HP Release Control.
- a Log on to HP Release Control and Select **Module > Administrator > Configuration > Labels and Terms > Default.**
 - b In the **Locale** box, select the appropriate language.

Setting Default Values in the Language Builder


You can set default values for the configuration file and working space folders as follows:

- 1** Locate the <Language Builder installation folder>\lb.conf file and copy the paths as shown in the following example:
- **CONFIGURATION_FILE=** <configuration file path>
Example: CONFIGURATION_FILE=C:/Language Builder/RC_Config.xml
 - **WORKING_SPACE_DIR=** <working space directory path>
Example: WORKING_SPACE_DIR=C:/Language Builder/ws
- 2** Replace backslashes with forward slashes.

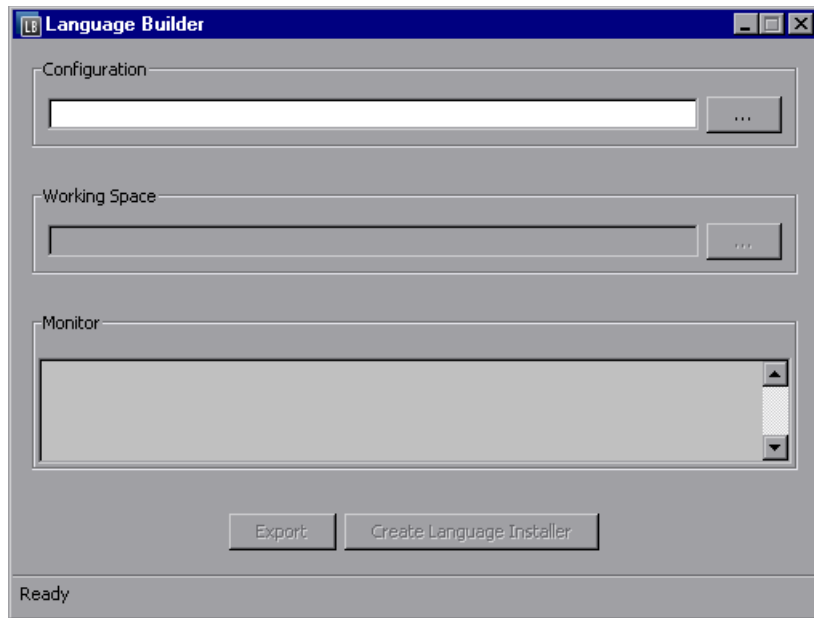
The next time you open Language Builder, the default values you set are displayed automatically in the Language Builder window. You can set the default values at any time after installation, and you can change the default values as needed.

Language Builder Window

Enables you to extract translatable content from your HP Software product, and import translated content to a new language pack.

To access	Double-click the LB button on your desktop  .
Relevant tasks	Adding a New Language to HP Release Control on page 11

Below is an image of the Language Builder window:




Language Builder Window Options

Option	Description
Configuration	The path for the configuration file.
Working Space	The folder path for storing exported and translated content.

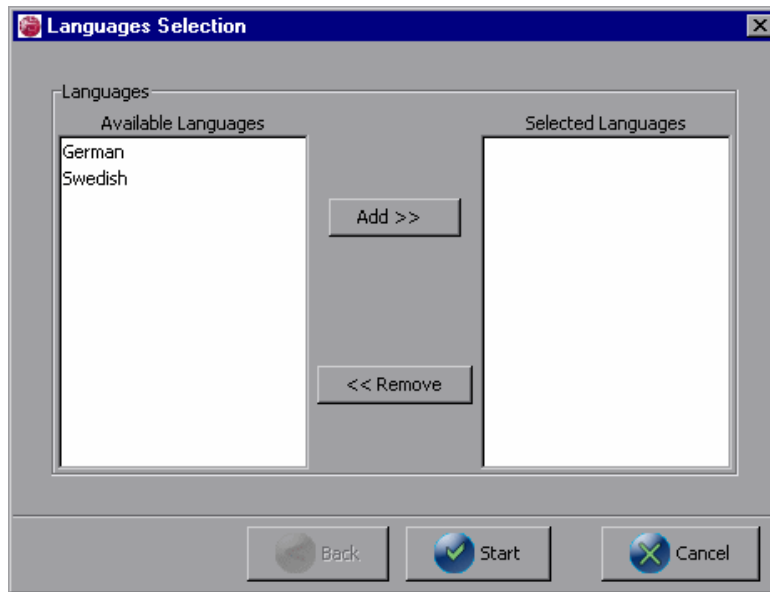
Option	Description
Monitor	Displays a log of exported or imported files.
Export	Enables you to export content to the working space folder.
Create Language Installer	Enables you to create a new language pack for PPM Center based on the translated content.
status bar	Displays the Language Builder status in real time.

Languages Selection Dialog Box

This dialog box enables you to select language folders containing translated content to include in the new language packs.

To access	<ol style="list-style-type: none">1 Double-click the LB button on your desktop .2 In the Language Builder window, click the Create Language Installer button.
Relevant tasks	Adding a New Language to HP Release Control on page 11

Below is an image of the Languages Selection dialog box:



Languages Selection Dialog Box Options

Option	Description
Available Languages	Displays the available languages in the Working Space folder. You can select one or more available languages to import.
Selected Languages	Displays the languages to import.
Add	Moves the selected language from the Available Languages box to the Selected Languages box. Languages that remain in the Available Languages list will not be imported.
Remove	Moves the selected language from the Selected Languages box to the Available Languages box.
Start	Begins the import process that creates the language pack to be deployed in HP Release Control.
Cancel	Closes the Languages Selection window without importing.

Index

C

- Configuration file
 - overview 8
 - specifying 13

E

- Export
 - completed 14
 - overview 8

I

- Import
 - completed 16

L

- Language Builder
 - configuration file 8
- Language Builder Window 18
 - Configuration edit box 13, 18
 - Create Language Installer button 15
 - Export button 19
 - Monitor box 19
 - status bar 19
 - Working Space edit box 18
- Language Installer 8
- Languages Selection dialog box 15

T

- Translated content
 - importing 8

W

- Working space folder
 - orig 13
 - selecting 13

