

HP Client Automation Enterprise

Patch Manager

for the Linux and Windows® operating systems

Software Version: 7.80

Migration Guide

Document Release Date: November 2009

Software Release Date: November 2009



Legal Notices

Warranty

The only warranties for HP products and services are set forth in the express warranty statements accompanying such products and services. Nothing herein should be construed as constituting an additional warranty. HP shall not be liable for technical or editorial errors or omissions contained herein.

The information contained herein is subject to change without notice.

Restricted Rights Legend

Confidential computer software. Valid license from HP required for possession, use or copying. Consistent with FAR 12.211 and 12.212, Commercial Computer Software, Computer Software Documentation, and Technical Data for Commercial Items are licensed to the U.S. Government under vendor's standard commercial license.

Copyright Notices

© Copyright 1993-2009 Hewlett-Packard Development Company, L.P.

Trademark Notices

Linux is a registered trademark of Linus Torvalds.

Microsoft®, Windows®, and Windows® XP are U.S. registered trademarks of Microsoft Corporation.

OpenLDAP is a registered trademark of the OpenLDAP Foundation.

RED HAT READY™ Logo and RED HAT CERTIFIED PARTNER™ Logo are trademarks of Red Hat, Inc.

PREBOOT EXECUTION ENVIRONMENT (PXE) SERVER

Copyright © 1996-1999 Intel Corporation.

TFTP SERVER

Copyright © 1983, 1993

The Regents of the University of California.

OpenLDAP

Copyright 1999-2001 The OpenLDAP Foundation, Redwood City, California, USA.

Portions Copyright © 1992-1996 Regents of the University of Michigan.

OpenSSL License

Copyright © 1998-2001 The OpenSSLProject.

Original SSLeay License

Copyright © 1995-1998 Eric Young (eay@cryptsoft.com)

DHTML Calendar

Copyright Mihai Bazon, 2002, 2003

Documentation Updates

The title page of this document contains the following identifying information:

- Software Version number, which indicates the software version.
 - The number before the period identifies the major release number.
 - The first number after the period identifies the minor release number.
 - The second number after the period represents the minor-minor release number.
- Document Release Date, which changes each time the document is updated.
- Software Release Date, which indicates the release date of this version of the software.

To check for recent updates or to verify that you are using the most recent edition, visit:

<http://h20230.www2.hp.com/selfsolve/manuals>

This site requires that you register for an HP Passport and sign-in. To register for an HP Passport ID, go to:

<http://h20229.www2.hp.com/passport-registration.html>

Or click the **New users - please register** link on the HP Passport login page.

You will also receive updated and new editions if you subscribe to the appropriate product support service. Contact your HP sales representative for details.

Table 1 indicates changes made to this document for Version 7.80.

Table 1 Document Changes for this Version

Chapter	Version	Change
All	7.50	HP Configuration Management (CM) Products have been rebranded to HP Client Automation (HPCA) products in Version 7.50.
1	7.50	Page 7, Infrastructure Prerequisites , updated recommended Client Automation Infrastructure versions. Added text: “Refer to the <i>Client Automation 7.50 Release Notes</i> on the Client Automation 7.50 media for distinctions between the 7.20 and 7.50 versions of the above products.”
2	7.50	Page 9, Migration Preparation Steps , adjusted topics to reference the latest build of Patch Manager (7.50) and how to upgrade from 3.0.3, 5.1x or 7.20 to 7.50. Added note: <ul style="list-style-type: none">• If you are upgrading from Patch Manager 5.1x, you only need to review the Client Automation Infrastructure pre-requisites. Go to the Final Steps for Version .
3	7.80	Page 24, Configuration Changes for Non-Windows (SuSE, Redhat, HP-UX, and Solaris) has been updated to reflect new migration procedure for 7.80.

Support

You can visit the HP Software support web site at:

www.hp.com/go/hpsoftwaresupport

This web site provides contact information and details about the products, services, and support that HP Software offers.

HP Software online software support provides customer self-solve capabilities. It provides a fast and efficient way to access interactive technical support tools needed to manage your business. As a valued support customer, you can benefit by using the support site to:

- Search for knowledge documents of interest
- Submit and track support cases and enhancement requests
- Download software patches
- Manage support contracts
- Look up HP support contacts
- Review information about available services
- Enter into discussions with other software customers
- Research and register for software training

Most of the support areas require that you register as an HP Passport user and sign in. Many also require an active support contract. To find more information about support access levels, go to the following URL:

http://h20230.www2.hp.com/new_access_levels.jsp

To register for an HP Passport ID, go to the following URL:

<http://h20229.www2.hp.com/passport-registration.html>

Contents

- 1 Prerequisites 7**
 - About this document.....7
 - Infrastructure Prerequisites7

- 2 Migration Preparation Steps 9**
 - Overview.....9
 - Preparing to Migrate from Version 3.0.3 (Radia 4.2).....9
 - Preparing to Migrate from Versions 5.1x, 7.20, or 7.5013

- 3 Migration Process 17**
 - Migration Process Overview17
 - Run the Patch Manager Migration Program.....18
 - Verify the Contents of the PATCHOBJ Instance in the CS Database.....21
 - Configuration Database Type Change for Oracle Users.....23
 - Database Synchronization23
 - Acquisition History and Other Log Files23
 - Microsoft Data Feeds and Patch Manager.....23
 - Configuration Change for Microsoft Office Product Exclusion.....24
 - Configuration Changes for Non-Windows (SuSE, Redhat, HPUNIX, and Solaris).....24
 - Migrating a Patch Manager Agent to Version 7.80.....26

1 Prerequisites

About this document

This document is for customers using HP Patch Manager (Patch Manager), Versions 3.0.3 and above, who want to migrate their existing environment to Patch Manager Version 7.80.

These versions of Patch Manager are part of the following HP product suites:

- Radia 4.x (if Patch Manager 3.0.3)
- HP OpenView Configuration Management 5.0 or 5.1x (if Patch Manager 5.1x)
- HP Client Automation 7.20 (if Patch Manager 7.20)
- HP Client Automation 7.50 (if Patch Manager 7.50)

Important! This migration guide does not cover how to migrate Patch Manager when it is installed as part of the following environments. Refer to the separate migration guides for those products.

- HP Client Automation Starter or Standard – Refer to the *HPCA Starter and Standard Migration Guide*.
- HP Client Automation 7.20 and 7.50 using Core and Satellites – Refer to the *HPCA Core and Satellite Servers Migration Guide*.

Infrastructure Prerequisites

During the Patch Manager 7.80 installation, you will be prompted to select whether you are migrating an existing Patch Manager environment or creating a new one. You must be using Patch Manager version 3.0.3 or higher to use the migration option.

To successfully migrate and use Patch Manager 7.80, you will need the following HP Client Automation environment:

- Configuration Server Version 7.80 is recommended, Version 5.1x or above is required. To migrate to the latest version, refer to the *HPCA Configuration Server Migration Guide*.
- Messaging Server Version 7.80 is required to support new patch reports introduced in Version 7.80. You must also use the Patch Data Delivery Agent and its configuration file (`patch.dda.cfg`) delivered with the Messaging Server Version you are using. To migrate your Messaging Server, refer to the *Messaging Server Migration Guide*.



Oracle Users

After the Messaging Server installation, Oracle database users must manually change the DBTYPE value in `patch.dda.cfg` from "MSSQL" (the default), to "ORACLE". For more information, refer to the *Messaging Server Migration Guide*.

- Reporting Server Version 7.80 is required to support new patch compliance reports introduced with Version 7.80. To migrate your Reporting Server, refer to the *Reporting Server Migration Guide*.

Refer to the *Release Notes* on the Client Automation Enterprise 7.80 media for distinctions between the 7.80 and previous versions of the above products.

There are steps that need to be performed before running the Patch Manager Installation program. Follow the steps in Chapter 2 that apply to your current Patch Manager version.

To determine the existing version of Patch Manager



Take note of the version of Patch Manager currently installed. This version number determines which migration steps you will need to follow.

- If Patch Manager is running under an Integration Server, examine the contents of the `httpd-####.log` (where `####` is the port number under which the Integration Server is running). This file is located in the Integration Server `\log` directory.

The version and build numbers are displayed in the log file with a line similar to:

```
20080502 20:56:57 Info: patch: Radia Patch Manager - Version 3.0.3 - Build 627
```

- If Patch Manager is running under its own server, examine the contents of the `httpd-patchmanager-####.log` (where `####` is the port number under which the Patch Manager Server is running) This file is located in the Patch Manager `\log` directory.

The version and build numbers are displayed in the log file with a line similar to one of the following:

```
20090218 15:10:20 Info: patch: CM Patch Manager - Version 5.11.000 - Build 849
```

```
20080502 20:56:57 Info: patch: Patch Manager - Version 7.20.000 Build 899
```

```
20090618 11:41:51 Info: patch: HP Client Automation Patch Manager - Version 7.50.000 - Build 1042
```


2 Migration Preparation Steps

Overview

Use the appropriate section, based on your existing version of Patch Manager, to prepare your Patch Manager environment and database for the final migration to Patch Manager Version 7.80.

- [Preparing to Migrate from Version 3.0.3 \(Radia 4.2\) below](#)
- [Preparing to Migrate from Versions 5.1x, 7.20, or 7.50 on page 13](#)

Preparing to Migrate from Version 3.0.3 (Radia 4.2)

Follow these Tasks to migrate from Patch Manager Version 3.0.3 (Radia 4.x) to Version 7.80.



As shown in Table 2, below, the migration tasks will vary based on whether or not you decide to keep your existing compliance device data.

Table 2 Preparation Tasks to Migrate from Patch Manager Version 3.0.3 (Radia 4.2)

Tasks	Applies to 3.0.3
Task 1 Initial Steps for Version 3.0.3	✓
Database Upgrade Decision for Version 3.0.3 Drop device compliance data or Keep device compliance data	✓
Task 3 Steps to Drop Compliance Tables	<i>If you Drop compliance data</i>
Database Schema Upgrade for Version 3.0.3	<i>If you Keep compliance data</i>
Task 5 Final Steps to Version 3.0.3	✓

Task 1 Initial Steps for Version 3.0.3



Run Step 2 to Step 5 under Task 1 if the PATCHMGR domain is not migrated during Configuration Server Migration.

- 1 Perform a backup of the ODBC Patch Database, Configuration Server Database, the server where the Patch Manager Server is loaded, and the Reporting Server prior to beginning the migration process.
- 2 Stop your Configuration Server.

- 3 Make sure you have adequate disk space to export the PATCHMGR domain instance and resource data. Manually export the existing PATCHMGR domain by running the following ZEDMAMS commands. Run each command on its own line.
- 4 Change directory to your pre-existing Configuration Server bin directory, then run the following commands:

Command 1:

```
ZEDMAMS VERB=EXPORT_INSTANCE, FILE=PRIMARY, DOMAIN=PATCHMGR, INSTANCE=*,  
OUTPUT=PATCHMGR_UPGRADE.XPI, PREVIEW=NO
```

Command 2:

```
ZEDMAMS VERB=EXPORT_RESOURCE, FILE=PRIMARY, DOMAIN=PATCHMGR, INSTANCE=*,  
OUTPUT=PATCHMGR_UPGRADE.XPR, PREVIEW=NO
```

Make sure the previous commands run to completion without error.

- 5 Continue with **Database Upgrade** Decision for Version 3.0.3 below.

Task 2 Database Upgrade Decision for Version 3.0.3

Several changes to the Patch Manager Database schema and tables must be applied in order to migrate your Patch Manager database to the current version. The database schema changes can be accommodated in one of two ways:

- **Dropping device compliance data [Task 4]:** If you do not need to keep your current Patch Manager device-compliance information, you can drop the existing tables that contain the device-compliance history. By dropping these device compliance tables:
 - Existing device compliance data will be removed; however, new device status data will be posted when the Patch Manager agents next connect.
 - All device status related information normally displayed in Patch Manager reports will be absent until the Patch Manager agents perform an agent connect.

If you decide you can delete all prior device compliance information, continue with these tasks:

- **Steps to Drop Compliance Tables** below
- **Task 5** Final Steps for Version 3.0.3 on page 12

OR

- **Keeping device compliance data [Task 5]:** If you need to preserve your current device-compliance information, you must run the appropriate set of database migration scripts; the set will vary according to your existing Patch Manager Version. These scripts will bring your database schema and tables up-to-date.

If you choose this migration path, continue with these Tasks:

- **Database Schema Upgrade for Version 3.0.3** on page 11
- **Task 5** Final Steps for Version 3.0.3 on page 12

Task 3 Steps to Drop Compliance Tables

Complete this step only if you are not keeping your existing compliance data on a 3.0.3 database.

Drop these tables, if they exist on your database:

- `nvd_zobjstat`

- nvd_bullsumm
- nvd_clssumm
- nvd_device
- nvd_de2pa
- nvd_de2re
- nvd_de2sp
- nvd_de2pr
- nvd_de2fc
- nvd_de2rc
- nvd_de2fs

After dropping the tables, you can skip to **Task 5** Final Steps for Version 3.0.3 on page 12.

Task 4 Database Schema Upgrade for Version 3.0.3



If you dropped the device compliance tables from your Patch Manager ODBC database, this topic does not apply. Skip this section and continue with **Task 5** Final Steps for Version 3.0.3 on page 12.

Background

Patch Manager version 5.1x and also 7.50 introduced improved performance in the rendering of patch compliance information as viewed through the HP Reporting Server. These improvements were achieved through revisions to the Patch Manager Compliance ODBC database tables and schema definitions.

To accommodate the schema changes, customers running Patch Manager Version 3.0.3 need to run SQL database scripts to create pre-requisite tables and migrate pre-existing device compliance information to the database schema used by the Patch Manager Version 7.80 product.

The SQL scripts for the migration of Microsoft SQL Server and Oracle device compliance data are supplied in the \Migration folder supplied with the Client Automation Patch Manager media.

The script referenced below will create and populate the new tables: NVD_DESTATUS, NVD_BUSTATUS, NVD_RESTATUS, NVD_PASTATUS and NVD_DEERROR from pre-existing NVD_DE* tables.

Procedure: To run the database scripts

The scripts referenced below are located in the \Migration folder of the Client Automation Patch Manager media.

- 1 Stop the Messaging Server, and wait for any operations on the database such as database synchronization or patch acquisition to finish.
- 2 Stop the Radia Integration Server running the Patch Manager module.
- 3 Locate the SQL scripts for Microsoft SQL Server and Oracle that are supplied in the \Migration folder under the Client Automation Patch Manager media.
- 4 If using **Microsoft SQL Server**, run the following scripts in the following order.

- a Run this script to ensure pre-requisite reporting tables exist for use with the Version 5.1x and above product releases:
`mssql_patch51_compliance_schema.sql`
 - b Run this script to migrate the compliance data from pre-existing Patch Manager ODBC database tables to the new tables used in Patch Manager Version 5.1x and above reports:
`mssql_migrate_pre_50_tables_to_51.sql`
 - c Run this script to create the additional schema and populate the newly created columns in Version 7.80:
`mssql_migrate_51x_72_to_78.sql`
 - d Continue with Step 6.
- 5 If using **Oracle**,
- a Run this script to create the Patch compliance tables introduced in Version 5.1x:
`oracle_patch51_compliance_schema.sql`
 - b Run this script to migrate the compliance data from pre-existing Patch Manager ODBC database tables to the new tables used in Patch Manager Version 5.1x and above reports:
`oracle_migrate_pre_50_tables_to_51x.sql`
 - c Run this script to create the additional schema and populate the newly created columns in Version 7.80:
`oracle_migrate_51x_72_to_78.sql`
- 6 Drop the pre-existing NVD_MSGCAT table.
- 7 Drop pre-existing indexes on the Patch Manager ODBC database tables:
NVD_RELEASE, NVD_SP, NVD_PRODUCT, NVD_PATCH, and NVD_BULLETIN.
- 8 Continue with **Task 5 Final Steps for Version 3.0.3** below.

Task 5 Final Steps for Version 3.0.3

Meet Client Automation Infrastructure Pre-requisites

For customers migrating to Patch Manager Version 7.80, the minimum Client Automation Infrastructure requirements are: Messaging Server Version 7.80, Reporting Server Version 7.80, and Configuration Server 7.80 (recommended) or 5.1x or above (required).



WARNING: If you have chosen to maintain all prior device compliance information you must install Messaging Server Version 7.80 to all Client Automation infrastructure machines that are posting Patch manager Compliance information. Do not restart Messaging Server software that is running an earlier Version.

Ensure your Client Automation Infrastructure components meet the minimum or recommended versions before migrating your Patch Manager Server. Pay attention to the Messaging Server requirement; the Messaging Server **MUST** be migrated before migrating your Patch Manager Server.

All software referred to in this section is available for installation or migration using the Client Automation Version 7.80 (recommended) media.

- Configuration Server Version 7.80 is recommended. Version 5.1x or above is required to manage Client Automation Agents in multiple geographies and non-English locales. To migrate to the desired version, refer to the appropriate *Configuration Server and Database Migration Guide*.
- Messaging Server Version 7.80 is required to support the patch compliance reports. You must also use the Patch Data Delivery Agent and its configuration file (`patch.dda.cfg`) delivered with that version. To migrate to this version, refer to the *Messaging Server Migration Guide*.



Oracle Users

After a Messaging Server install, Oracle database users must change the DBTYPE value in `patch.dda.cfg` from "MSSQL" (the default), to "ORACLE".

- Reporting Server Version 7.80 is required to support the patch compliance reports. To migrate to a later version refer to the *Reporting Server Migration Guide*.

After meeting the Client Automation Infrastructure pre-requisites above, you can begin the Patch Manager [Migration Process](#) on page 17.

Preparing to Migrate from Versions 5.1x, 7.20, or 7.50

Follow these Tasks to migrate from Patch Manager Version 5.1x, 7.20, or 7.50 to Version 7.80.

Table 3 Preparation Tasks to Migrate from Patch Manager Versions 5.1x or 7.20

Tasks	5.1x	7.20	7.50
Initial Steps for Versions 5.1x, 7.20, or 7.50 for Version 5.1x or 7.20	✓	✓	✓
Task 2 Database Schema Upgrade for Versions	✓	✓	✓
Task 3 Final Steps for Version 5.1x or 7.20	✓	✓	✓

Task 1 Initial Steps for Versions 5.1x, 7.20, or 7.50



Run Step 2 to Step 5 under Task 1 if the PATCHMGR domain is not migrated during Configuration Server Migration.

- 1 Perform a backup of the ODBC Patch Database, Configuration Server Database, the server where the Patch Manager Server is loaded, and the Reporting Server prior to beginning the migration process.
- 2 Stop your Configuration Server.
- 3 Make sure you have adequate disk space to export the PATCHMGR domain instance and resource data. Manually export the existing PATCHMGR domain by running the following ZEDMAMS commands. Run each command on its own line.
- 4 Change directory to your pre-existing Configuration Server bin directory, then run the following commands:

Command 1:

```
ZEDMAMS VERB=EXPORT_INSTANCE, FILE=PRIMARY, DOMAIN=PATCHMGR, INSTANCE=*,  
OUTPUT=PATCHMGR_UPGRADE.XPI, PREVIEW=NO
```

Command 2:

```
ZEDMAMS VERB=EXPORT_RESOURCE, FILE=PRIMARY, DOMAIN=PATCHMGR, INSTANCE=*,  
OUTPUT=PATCHMGR_UPGRADE.XPR, PREVIEW=NO
```

Make sure the previous commands run to completion without error.

- 5 Continue with Task 2.

Task 2 Database Schema Upgrade for Versions 5.1x, 7.20, or 7.50

Background

Run the following database scripts to create the additional schema needed for new 7.8 reports and populate the columns that are newly created. The scripts are located in the \Migration folder under the HPCA Patch Manager media.

To run the database scripts

- 1 Stop the Messaging Server, and wait for any operations on the database such as database synchronization or patch acquisition to finish.
- 2 Stop the Patch Manager Server.
- 3 Locate the SQL scripts for Microsoft SQL Server and Oracle that are supplied in the \Migration folder under the Client Automation Patch Manager media.
- 4 If using **Microsoft SQL Server**: run this script to create additional schema for Version 7.80 reports and populate the new columns:
For Version 5.1x and 7.20
— Run `mssql_migrate_51x_72_to_78.sql`
For Version 7.50
— Run `mssql_migrate_75_to_78.sql`
- 5 If using **Oracle**, run this script to create additional schema for Version 7.80 reports and populate the new columns:
For Version 5.1x and 7.20
— Run `oracle_migrate_51x_72_to_78.sql`
For Version 7.50
— Run `oracle_migrate_75_to_78.sql`
- 6 Continue with [Final Steps](#) for Version .

Task 3 Final Steps for Version 5.1x, 7.20, or 7.50

Meet Client Automation Infrastructure Pre-requisites

For customers migrating to Patch Manager Version 7.80, the minimum Client Automation Infrastructure requirements are: Messaging Server Version 7.80, Reporting Server Version 7.80, and Configuration Server 7.80 (recommended) or 5.1x or above (required).



WARNING: If you have chosen to maintain all prior device compliance information you must install Messaging Server Version 7.80 to all Client Automation infrastructure machines that are posting Patch manager Compliance information. Do not restart Messaging Server software that is running an earlier Version.

Ensure your Client Automation Infrastructure components meet the minimum or recommended versions before migrating your Patch Manager Server. Pay attention to the Messaging Server requirement; the Messaging Server **MUST** be migrated before migrating your Patch Manager Server.

All software referred to in this section is available for installation or migration using the Client Automation Version 7.80 (recommended) media.

- Configuration Server Version 7.80 is recommended. Version 5.1x or above is required to manage Client Automation Agents in multiple geographies and non-English locales. To migrate to the desired version, refer to the appropriate *Configuration Server and Database Migration Guide*.
- Messaging Server Version 7.80 is required to support the patch compliance reports. You must also use the Patch Data Delivery Agent and its configuration file (`patch.dda.cfg`) delivered with that version. To migrate to this version, refer to the *Messaging Server Migration Guide*.



Oracle Users

After a Messaging Server install, Oracle database users must change the `DBTYPE` value in `patch.dda.cfg` from "MSSQL" (the default), to "**ORACLE**".

- Reporting Server Version 7.80 is required to support the patch compliance reports. To migrate to a later version refer to the *Reporting Server Migration Guide*.

After meeting the Client Automation Infrastructure pre-requisites above, you can begin the Patch Manager [Migration Process](#) on page 17.

3 Migration Process

Migration Process Overview

When Migration is selected during the installation process, the following automated sequence of events will be performed by the Patch Manager Version 7.80 setup program.

- The migration determines if the Patch Manager Server can be migrated in place, or requires a migration to a new location, service and port.
 - **In-Place Migration** – This is performed by default if Patch Manager is the only Client Automation Infrastructure module hosted by the existing HTTP (Integration Server) service.

An in-place migration keeps your existing directory and service name, but allows you to change the port number.

- **Migration to a New Directory/Service/Port** – This migration is performed if the HTTP server hosting your Patch Manager also hosts another Client Automation Infrastructure module, such as the Policy Server or Portal,
 - The migration assigns the following dedicated service name:
httpd-patchmanager (HPCA Patch Manager Server)
 - You must accept a new directory and port for your Patch Manager Server. The defaults are:
Directory: C:\Program Files\Hewlett-Packard\CM\PatchManager
Port: 3467
 - Your Patch Manager Server and config files are moved to the new directory.
 - You have the option of moving your patch acquisition data files to the new directory.
 - Your pre-existing HTTP server configuration file is updated to suppress the loading of Patch Manager.
- The necessary modules of the Patch Manager Server are updated.
- If Configuration Server Components and Database Updates are also selected:
 - The existing PATCHMGR domain is removed.
 - The 7.80 PATCHMGR domain is recreated. The Class, Instance, and Resource database decks provided by Hewlett-Packard are imported. While customization of CSDB content within the PATCHMGR domain is not recommended, you should be advised this process would remove any field customization of PATCHMGR domain classes and `_BASE_INSTANCE_` (attribute defaults).
 - The SYSTEM domain, Instance database decks provided by Hewlett-Packard are imported.
 - The PATCHMGR domain decks you created in Step 4 of [Initial Steps for Version 3.0.3](#) on page 9 and [Initial Steps for Versions 5.1x, 7.20, or 7.50](#) on page 13, specifically the `PATCHMGR_UPGRADE.XPI` and `PATCHMGR_UPGRADE.XPR` files, are imported.

- ▶ If these decks are not available, setup will proceed to completion, and the 7.80 PATCHMGR domain will not be updated with the pre-existing PATCHMGR domain data.
- The PATCHMGR_REX.XPI and PATCHMGR_REX.XPR are imported to ensure the latest version of install.rex and update.rex are in the Configuration Server Database.
- Patch Manager Service is started, and the Patch Manager setup will redirect you to the Patch Manager configuration page.

Run the Patch Manager Migration Program

To run the migration for the Patch Manager Server components

- ▶ Make sure the PATCHMGR domain decks you created in Step 4 of [Initial Steps for Version 3.0.3](#) on page 9 and [Initial Steps for Versions 5.1x, 7.20, or 7.50](#) on page 13, specifically the PATCHMGR_UPGRADE.XPI and PATCHMGR_UPGRADE.XPR files are present in the “bin” folder of the 7.80 Configuration Server installed path. If not present, copy the decks into the Configuration Server\bin path before starting the migration of Patch Manager Server components.

- 1 From the Patch Manager\extended_infrastructure\patch_manager_server\win32 directory on the Client Automation Version 7.80 installation media, double-click **setup.exe**.

- ▶ The minimum build of nvdkit required for Patch Manager Version 7.80 server components is the build placed on the Client Automation 7.80 media. As of this writing, it is nvdkit build 481.

If you are running Patch Manager from a command line, be sure to stop the service before running the installation.

The welcome window opens.

- 2 Click **Next**. The end-user license agreement window opens.

- 3 Click **Accept** to the HP Software License Terms.

The New Installation / Migration window opens.

- 4 To upgrade to Patch Manager Version 7.80, select **Migration**.

- 5 Select the components to install.

- ▶ If you are upgrading from Patch Manager 5.1x, 7.20, or 7.50 to 7.80, you only need to select **Patch Manager Server and Configuration Server Database Updates**; the Patch Manager-related Configuration Server Components were not changed from 5.1x, 7.20, or 7.50.

- ▶ Select **Configuration Server Database Updates** if the PATCHMGR DOMAIN is not already migrated during Configuration Server Migration.

- **Patch Manager Server**
Installs the Patch Manager Server including the executables nvdkit, httpd.tkd and tls.tkd.
 - Refer to [Migration Process Overview](#) on page 17, for the conditions under which the Patch Manager Server will be migrated in-place, or to a new and dedicated directory, service and port.
 - **Configuration Server Component Updates**
Installs Patch Manager Version 7.80 Configuration Server rexx scripts required for the successful operation of Patch Manager.
 - **Configuration Server Database Updates**
Creates the PATCHMGR domain and imports Patch Manager version 7.80 instance and resource data into pre-existing Configuration Server Database.
 - To use the features of Patch Manager version 7.80, you must select the Configuration Server Database Updates for all existing versions of Patch Manager.

Note: The PATCHMGR domain, and only the PATCHMGR class definitions will be replaced, then the PATCHMGR domain decks you created in Step 4 of [Initial Steps for Version 3.0.3](#) on page 9 and [Initial Steps for Versions 5.1x, 7.20, or 7.50](#) on page 13, specifically the PATCHMGR_UPGRADE.XPI and PATCHMGR_UPGRADE.XPR files, are imported.
 - The Configuration Server Components Updates and Configuration Server Database Updates portions of the Patch Manager installation can only be run on the local Configuration Server computer. These pieces cannot be installed over a network connection.
 - ⚠ After applying the Configuration Server Database updates, also verify that the PATCHOBJ instance in your CS Database contains the correct connections. Refer to page 21.
- 6 After making your selections, click **Next**.
The warning window opens, this identifies any services that may need to be stopped and restarted in order to complete the installation,
 - 7 Click **Next** to the warning.
The Installation Folders window opens.
 - 8 Type the location where the Configuration Server is installed, or click **Browse** to navigate to it.
 - 9 The Patch Manager Server directory displays the location of your existing service.
 - Where possible, accept the default directory.
Accept the default directory to allow for an in-place migration.
 - Type the location where you would like to migrate the Patch Manager Server, or click **Browse** to manually select the location.
 - 10 Click **Next**.
A dialog prompts you to confirm the updates to the Configuration Server directory and contents.
 - 11 Click **OK** if you would like to continue.

Additional Patch Manager Server Migration dialogs may appear.

- 12 Read and respond to any Patch Manager Server Migration dialogs that appear. Which dialogs appear will depend on your current environment.



If Patch Manager Server is not running as a separate, dedicated service, the migration requires you to move it to a new location. The new service name will be `httpd-patchmanager`.

You are given the option to also move your patch data to the new location.

Later, you can choose the port (default is 3467).

The license file location window opens.

- 13 Type the location of your license file or click **Browse** to navigate to it, and then click **Next**.

The HTTP Server IP Address window opens.

The HTTP Server IP address is used to open the Client Automation Patch Manager Administrator page immediately following installation.

- 14 Type the IP address of the Patch Manager Server, and click **Next**.

The HTTP Server Port window opens.

- 15 For the HTTP Server Port, accept the default or type an available port number for the Patch Manager Server, and click **Next**.

The port availability is checked.

If the selected port is not available, a Validation Failed dialog warns you; click **OK** and choose another port number.

The FINALIZE_PATCH service window opens.

- 16 Review the requirement to entitle all agents to the PATCHMGR.ZSERVICE.FINALIZE_PATCH service and click **Next**.



Refer to the *Patch Manager Installation and Configuration Guide* for additional details on entitling agents to the FINALIZE_PATCH service.

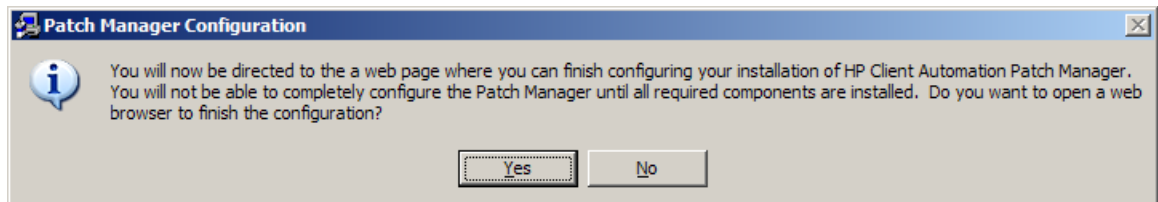
The summary window opens.

- 17 Verify the summary screen and click **Install**.

Read and answer any warning dialog boxes that appear. Which dialog boxes appear will depend on your configuration.

- 18 Click **Finish**.

The Configuration Server and its Database have been updated, and the Patch Manager Server version 7.80 has been installed.




- 19 Click **Yes** if all components are installed and you are ready to configure the Patch Manager.

20 After a successful migration review and reset all Patch Manager Configurations carefully. HP recommends doing this using the Patch Administrator console.

You are directed to the HP Client Automation Patch Manager Administrator page for final configuration.

▶ For further information on using the Patch Manager Administrator, please refer to the *Patch Manager Installation and Configuration Guide, Version 7.80*

Or

Click the help button  on the right side of any page to open the HPCA Patch Manager online help to the page related to that topic..

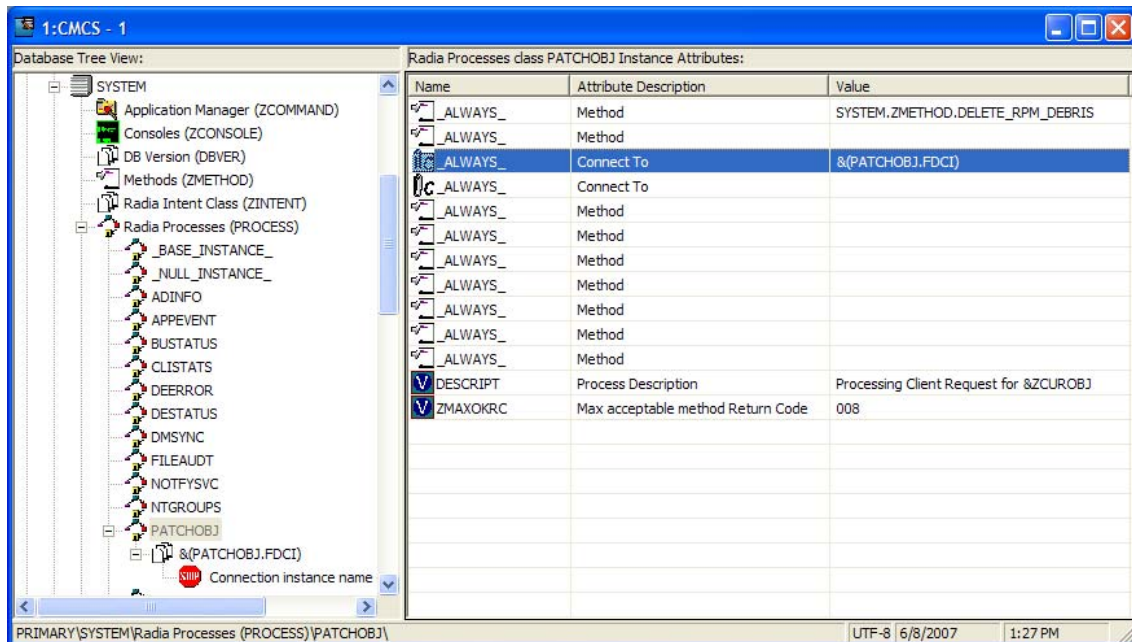
Verify the Contents of the PATCHOBJ Instance in the CS Database

After updating the Configuration Server Database Components for Patch Manager, use the HPCA Administrator CSDB Editor to validate the contents of the PRIMARY.SYSTEM.PROCESS.PATCHOBJ instance in the Configuration Server database.


Display the PRIMARY.SYSTEM.PROCESS.PATCHOBJ instance and locate the Value for **&(PATCHOBJ).FDCI**. It must be defined as an **_ALWAYS_ Connect To** attribute, which looks like this:

 **_ALWAYS_** Connect To

The figure below shows the required connection type for **&(PATCHOBJ).FDCI**.



If **&(PATCHOBJ).FDCI** is found next to an **_ALWAYS_ Method** attribute, which looks like this:

 **_ALWAYS_** Method

copy and paste the value for **&(PATCHOBJ).FDCI** into an **_ALWAYS_ Connect To** attribute, and then delete the value from the **_ALWAYS_ Method** attribute.



Attribute values must be in uppercase.



An incorrect connection type can occur when the first three lines of the class definition for PRIMARY.SYSTEM.PROCESS have been customized from the HP-supplied default.

Configuration Database Type Change for Oracle Users

Oracle users must set the Database Type to Oracle in the Patch Manager Configuration file manually.



Failure to set the ODBC DSN Database type value to **Oracle** will result in a default value of **SQL server**, and result in Database synchronization and Patch Acquisition failures.

To set the DB Type to oracle in Patch Manager Configuration File

- 1 Stop the Patch Manager Server service.
- 2 Open the Patch Configuration file, `patch.cfg` located in the `<Patch Manager Server Install Folder>/etc` folder.
- 3 Search for the `DB_TYPE` parameter and change the existing value to “oracle” and save the file. The entry should look like the following:

```
DB_TYPE          "oracle"
```

- 4 Start the Patch Manager Server service.

Database Synchronization

Upon completing the Patch Manager Server install, use the Patch Manager Administrator to synchronize the database.

From the Operations tasks, click **Perform Synchronization**.

Acquisition History and Other Log Files

When you migrate from Patch Manager Version 3.0.3 (Radia 4.2) to Patch Manager Version 7.80, you will not be able to view migrated Acquisition History files through the Patch Manager Admin UI in the new 7.80 migrated environment. You can view migrated Acquisition History files manually by opening the HTML files present under `<Patch Manager Server Install Folder>/logs/htmls` directory.

As part of Patch Manager Migration to a new directory path, the log files will not be migrated. As a result, in the new 7.80 migrated environment, you will not be able to view older log files through the Patch Manager Admin UI.

Microsoft Data Feeds and Patch Manager

Microsoft is replacing MSSECURE with Microsoft Update for newer operating system versions and their prerequisite service packs. This affects HP Patch Manager as well as Microsoft Update technologies. See the Microsoft Web site for a complete list of supported

operating systems and products. At the time of this writing, Microsoft Knowledge Base articles state further updates to their legacy security bulletin catalog would be terminated after October 9, 2007. However, Microsoft has since continued to publish updates. On the actual date of Microsoft's termination of support for MSSECURE, only patches hosted by Microsoft Update Catalog will be updated and maintained.

Patch Manager 3.0.3 provided support for the new Microsoft Update technology with no additional configuration. During the time that MSSECURE and Microsoft Update technologies are both actively updated by Microsoft, Patch Manager 7.80 supports the use of both MSSECURE and Microsoft Update technologies to download, process, and publish the data needed to manage patches. Furthermore, Patch Manager supports the transition from MSSECURE to Microsoft Update Catalog since both patch repositories may be used for patch management. HP will continue to support patching for operating systems supported by the MSSECURE technologies for the present time. However, when MSSECURE is no longer updated by Microsoft, HP will no longer provide data correction services for MSSECURE. This data will remain static until it is no longer supported by HP. The date of termination of MSSECURE data correction support by HP will be dependent on Microsoft's termination date.

Configuration Change for Microsoft Office Product Exclusion

The Microsoft Office security patch management processes in Version 3.0.3 contained safeguards to prevent the management of Microsoft Office Security patches through Patch Manager. This safeguard was added to prevent conflict with other Microsoft Office software management technologies including installations managed through Application Manager, Application Self-service Manager (formerly named Software Manager) or Office installations installed via an ACP (Administrative Control Point).

Patch Manager Versions 5.1x and above use the new Microsoft Update technologies; in this environment, the programmatic safeguards present in Patch Manager Version 3.0.3 are no longer active. If you are migrating from a previous version of Patch Manager and did not remove your `patch.cfg` before migration, and want to exclude all Microsoft Office products or their standalone versions from Patch Manager acquisition and management, append the following text to your product exclusion list:

```
"!Access*,!Excel*,!FrontPage 200[023],!FrontPage  
9[78],!InfoPath*,!Office*,!OneNote*,!Outlook*,!PowerPoint*,!Project  
200[023],!Project 98,!Publisher*,!Visio*,!Word*,!Works**"
```



To specify product exclusions, use the Patch Manager Administrator web page, click **Configuration Settings Preferences**, and type the exclusions in the Excluded Products text box.

Configuration Changes for Non-Windows (SuSE, Redhat, HPUX, and Solaris)

If you are migrating from Patch Manager Version 3.0.3, 5.1x or 7.20 and are managing patches for Linux Agents (SuSE and Redhat), then the `patch.cfg` file and the acquisition job (`.acq`) files are modified during Patch Manager migration to allow the SuSE patch acquisition to run successfully on Patch Manager Version 7.80. The changes done to `patch.cfg` and `.acq` files during migration are the following:

- 1 From Patch Manager version 7.50 and later, SuSE Linux Enterprise Server and SuSE Linux Enterprise Desktop product types are supported for the SUSE OS Version later than 9. The new parameter `SUSE_PROD_TYPE` is added to the `patch.cfg` file to identify the product type selected as Server, Desktop, or both.

To support the acquisition of SuSE Linux Enterprise Server 9 patches in 7.8, the new parameter shown below is added to the `patch.cfg` file when migrated from Patch Manager Version 3.03, 5.1x or 7.20.

```
SUSE_PROD_TYPE    suse::Server
```

When migrating from Patch Manager Version 7.50 to 7.80, the `SUSE_PROD_TYPE` parameter already exists in the `patch.cfg` so there is not need to change it.

- 2 When migrating from Patch Manager Version 3.0.3, 5.1x or 7.2 to Patch Manager Version 7.80, the metadata folders `9` and `9-x86_64` for SuSE Linux Enterprise Server 9 x86 and x86_64 (AMD64 and Intel EM64T) architectures present under `<Patch_Manager_Install_Dir>\data\patch\suse` are moved to the new location `<Patch_Manager_Install_Dir>\data\patch\suse\server` to support acquisition of SuSE Linux Enterprise Server 9 x86 and x86_64 patches in Patch Manager Version 7.80.
- 3 In Patch Manager Version 3.0.3, the SuSE product exclusion list defines the exclusion by application. As of Patch Manager Version 5.1x and later, this design changed and the SuSE product exclusion list defines the exclusion for the whole SuSE product, instead of by application.

As a result, the acquisition files created for SuSE 8 and SuSE 9 with applications selected for exclusion will not be compatible with the Patch Manager Version 7.80. To ensure compatibility with Version 7.80, all the products related to SuSE 8 and SuSE 9 selected for exclusion are removed from the acquisition job (`.acq`) files when migrated from Patch Manager Version 3.0.3 to Patch Manager Version 7.80.

- 4 When migrating from Patch Manager Version 3.0.3, 5.1x or 7.2 to Patch Manager Version 7.80, if any products are selected for exclusion in your SuSE acquisition (`.acq`) files, the `PRODUCT` line in the file will be written as below:

```
PRODUCT    SUSE::!9 SUSE::!9-x86_64
```

From Patch Manager Version 7.50 and later, the syntax for identifying SuSE product exclusions has changed to accommodate SuSE Linux Enterprise Servers (SLES) as well as SuSE Linux Enterprise Desktops (SLED). To make your product exclusion list compatible with Patch Manager Version 7.80, all occurrences of the word `SUSE::` will be replaced with `SLES::` in the `PRODUCT` line of the `.acq` file corresponding to the SuSE acquisition. A sample `PRODUCT` line with this change is the following:

```
PRODUCT    SLES::!9 SLES::!9-x86_64
```

- 5 From Patch Manager Version 7.5 and later, the UNIX Operating Systems (HPUX and SOLARIS), the REDHAT Operating System (Versions 2.1 ES, 2.1 WS, 2.1 AS, 3ES, 3AS, and 3WS for both X86 and X86_64 architectures), and the SuSE Linux Enterprise Server 8 (for both x86 and x86_64 architectures) are not supported. All occurrences of OS Filter and Products selected for exclusion with respect to these unsupported platforms in `patch.cfg` file and the acquisition job (`.acq`) files respectively are removed.
- 6 The Acquisition job (`.acq`) files, which are created specific to HPUNIX or SOLARIS or both are renamed with the `.bak` extension and will not be shown in Patch Manager Version 7.80 Admin UI.

Migrating a Patch Manager Agent to Version 7.80



Use these procedures to migrate your Windows and Red Hat or Suse Agents to Version 7.80. There are no version 7.80 agents offered for Sun Solaris or HP-UX.

[Pre-requisite: Entitle all Patch Manager devices to the FINALIZE_PATCH Service](#)

As of Patch Manager Version 5.1x, the service PATCHMGR.ZSERVICE.FINALIZE_PATCH is required to be in all agent entitlement lists. Before migrating your existing Patch Manager agents to the latest Version 7.80, use the CSDB Editor or Enterprise Manager to assign the service called PATCHMGR.ZSERVICE.FINALIZE_PATCH.



Failure to assign the FINALIZE_PATCH service to a Patch Manager device's policy entitlement will result in prolonged Patch Manager agent processing and failure to provide real-time compliance information.

When a Patch Manager agent runs, all applicable security bulletins or advisories are downloaded and queued for installation by a Patch Manager Service called PATCHMGR.ZSERVICE.FINALIZE_PATCH. This service is prioritized to run as the last service when running Patch Manager. The FINALIZE_PATCH service is designed to send current device compliance information to Client Automation infrastructure components after all patch management activities are complete.

[To migrate the Patch Manager Agents to 7.80:](#)

1 Enable the Patch Agent Updates for **Version 7**.

To do this, open the HP Client Automation Patch Manager Administrator page. From the Configuration tasks, select **Patch Agent Updates** and select **Version 7**. This is required to migrate existing Patch Manager agents to Version 7.80.

- Also choose the **Publish and Distribute** option to automatically distribute the 7.80 updates to the Patch Manager Agents after they are downloaded during the next patch acquisition.

Refer to the *Patch Manager Installation and Configuration Guide* for more information.

2 Run a patch acquisition.

The acquisition automatically downloads updated product discovery scripts and the latest Patch Manager Version 7 agent updates from the HP Patch Manager Update web site. As of this writing, the latest Agent update for Version 7 is 7.80. After download, the files are published to the PATCHMGR domain and connected to the Discover Patch Service instance. The AGENT_UPDATES parameter, specified during an acquisition session, controls script update processing.

This completes your migration to a Patch Manager 7.80 environment.