

HP Asset Manager

Software version: 5.20

Physical Data Models

Document Release Date: 01 October 2009
Software Release Date: October 2009



Legal Notices

Copyright Notices

© Copyright 1994-2009 Hewlett-Packard Development Company, L.P.

Restricted Rights Legend

Confidential computer software.

Valid license from HP required for possession, use or copying.

Consistent with FAR 12.211 and 12.212, Commercial Computer Software, Computer Software Documentation, and Technical Data for Commercial Items are licensed to the U.S. Government under vendor's standard commercial license.

Warranty

The only warranties for HP products and services are set forth in the express warranty statements accompanying such products and services.

Nothing herein should be construed as constituting an additional warranty.

HP shall not be liable for technical or editorial errors or omissions contained herein.

The information contained herein is subject to change without notice.

For information about third-party and/or open source license agreements, or to view open source code, use one of the following ways:

- In the ThirdParty directory of the installation CD-ROM
- In the directories in which the binary files of the third-party and/or open source tools are located after installation of Asset Manager
- Through the component's url indicated in the **Open Source and Third-Party Software License Agreements** guide

Trademark Notices

- Adobe®, Adobe logo®, Acrobat® and Acrobat Logo® are trademarks of Adobe Systems Incorporated.
- Corel® and Corel logo® are trademarks or registered trademarks of Corel Corporation or Corel Corporation Limited.
- Java™ is a US trademark of Sun Microsystems, Inc.
- Microsoft®, Windows®, Windows NT®, Windows® XP, Windows Mobile® and Windows Vista® are U.S. registered trademarks of Microsoft Corporation.
- Oracle® is a registered trademark of Oracle Corporation and/or its affiliates.
- UNIX® is a registered trademark of The Open Group.

Acknowledgements

This product includes software developed by the Apache Software Foundation (<http://www.apache.org/> [<http://www.apache.org/>]), which is Copyright © The Apache Software Foundation. All rights reserved.

This product includes software developed by The OpenLDAP Foundation, which is Copyright ©, The OpenLDAP Foundation, Redwood City, California, USA. All Rights Reserved. OpenLDAP® is a registered trademark of the OpenLDAP Foundation.

This product includes software developed by the OpenSSL Project for use in the OpenSSL Toolkit (<http://www.openssl.org/>), which is Copyright © The OpenSSL Project. All rights reserved.

This product includes software developed by the OpenSymphony Group (<http://www.opensymphony.com/>), which is Copyright © The OpenSymphony Group. All rights reserved.

This product includes code licensed from RSA Data Security.

This product includes software developed by the JDOM Project (<http://www.jdom.org/>), which is Copyright © Jason Hunter & Brett McLaughlin. All rights reserved.

Table of Contents

Preface	5
Tables	5
Links	6
 Chapter 1. Portfolio	 9
Models	10
Portfolio items	11
Assets	12
Assets linked to the procurement cycle	13
IT equipment	14
Telephones	15
Ports and connections	16
Work Orders	17
Projects	18
Stocks	19
Software Installations	20
Cost Centers	21
 Chapter 2. Procurement cycle	 23
Procurement cycle	24
Purchase requests	25
Orders	26

Receptions	27
Invoices	28
Assets to be returned	29
Chapter 3. Contracts	31
Contracts	32
Chapter 4. Financials	33
Budget and expenses	34
Chargebacks	35
Taxes	36
Chapter 5. Cable and Circuit	37
Cables and cable devices	38
Color codes	39
Label rules	40
Pair/conductor types	41
Cable duties	42
Slots	43
Topologies	44
Topology groups	45
Termination-field configurations	46
Cable links	47
Chapter 6. Administration	49
Access to the database	50
Workflows	51
Chapter 7. Organization	53
Employees and Departments	54
Chapter 8. Catalog	55
Catalog	56

Preface

This guide presents diagrams that correspond to the physical data models in Asset Manager.

Each of these diagrams contains one or more tables used by the modules in Asset Manager.

Tables

Each of the tables represented in this guide is identified by its SQL name.

Examples:

- The Portfolio items table uses the SQL name **amPortfolio**.
- The Assets table uses the SQL name **amAsset**.
- The Locations table uses the SQL name **amLocation**.
- The Employees and departments table uses the SQL name **amEmplDept**.

The most important tables in each diagram are shown as the largest.


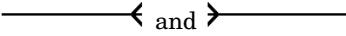

Examples:

- The Assets table (**amAsset**) in the [Assets](#) [page 12] diagram.
- The Cables table (**amCable**) in the [Cables and cable devices](#) [page 38] diagram.
- The Taxes table (**amTax**) in the [Taxes](#) [page 36] diagram.

Links

There are three types of links between tables:

- 1-1 links.
- 1-n and n-1 links.
- n-n links.

Type of link	Graphical representation of link
1-1	
1-n (reverse link of of n-1)	
n-n	

Each of the links represented in this guide is identified by its SQL name.


Examples:

- The link going from the Portfolio items table (**amPortfolio**) to the Employees and departments table (**amEmplDept**) has the SQL name **User**.
- The link going from the Employees and departments table (**amEmplDept**) to the Portfolio items table (**amPortfolio**) has the SQL name **ItemsUsed**.

 **Note:**

The SQL name of a link assumes that one of the linked tables is the source table and the other is the destination table. Thus, the **User** link between the source table (**amPortfolio**) indicates that the link points to the user record of the destination table (**amEmplDept**). It's reverse link, though, is called **ItemsUsed**. This link points to the records of the assets used by a given user. In this case, the source table is that of Employees and departments and the destination table is that of portfolio items.

In an effort not to overload our diagrams, reverse links are not represented. The choice of a link and its reverse link is arbitrary. If you want to find out what the SQL name of a reverse link is:

- 1 Launch Asset Manager Application Designer.
- 2 Open your database description.
- 3 Select the table of your choice.
- 4 Click .
- 5 Select a link.
- 6 The SQL name of its reverse link is indicated in the **Reverse link** field.

1-1 links

This kind of link means that:

- ◆ One record in the source table is linked to one record in the destination table.

Example: The **Asset** link between the Computers table (**amComputer**) and the Assets table (**amAsset**) in the [IT equipment](#) [page 14] diagram. This link indicates that only one computer record can be linked to only one asset record.

1-n and n-1 links

A 1-n link means that:

- One record from the source table can be linked to several records in the destination table.
- Several records in the destination table can be linked to one record in the source table.

Example: The **Rents** link between the Contracts table (**amContracts**) and the Contract rents (**amCntrRent**) table in the [Contracts](#) [page 32] diagram. This link indicates that one contract record can be linked to several contract rent records.

A n-1 link means that:

- Several records in the source table can be linked to one record in the destination table.
- One record in the destination table can be linked to several records in the source table.

Example: The **Model** link between the Assets table (**amAsset**) and the Models table (**amModel**) in the [Models](#) [page 10] diagram. This link indicates that several asset records can correspond to the same model record.

n-n links

This type of link means that:

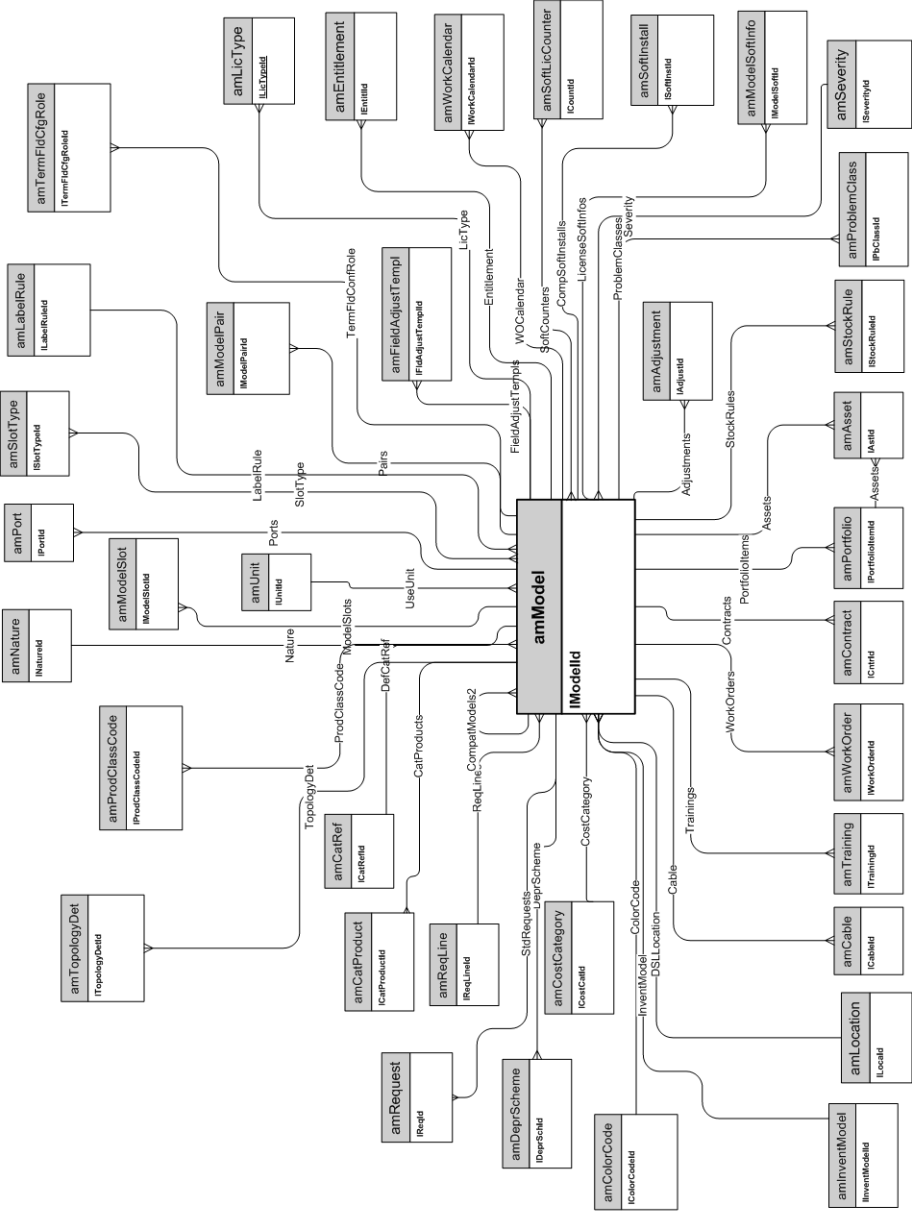
- ◆ Several records in the source table can be linked to several records in the destination table.

Example: The **FuncRights** link between the User profiles table (**amProfile**) and the Functional rights table (**amFuncRight**) in the [Access to the database](#) [page 50] diagram. This link indicates that an asset record can be linked to several functional right records and that a functional right record can be linked to several user profile records.

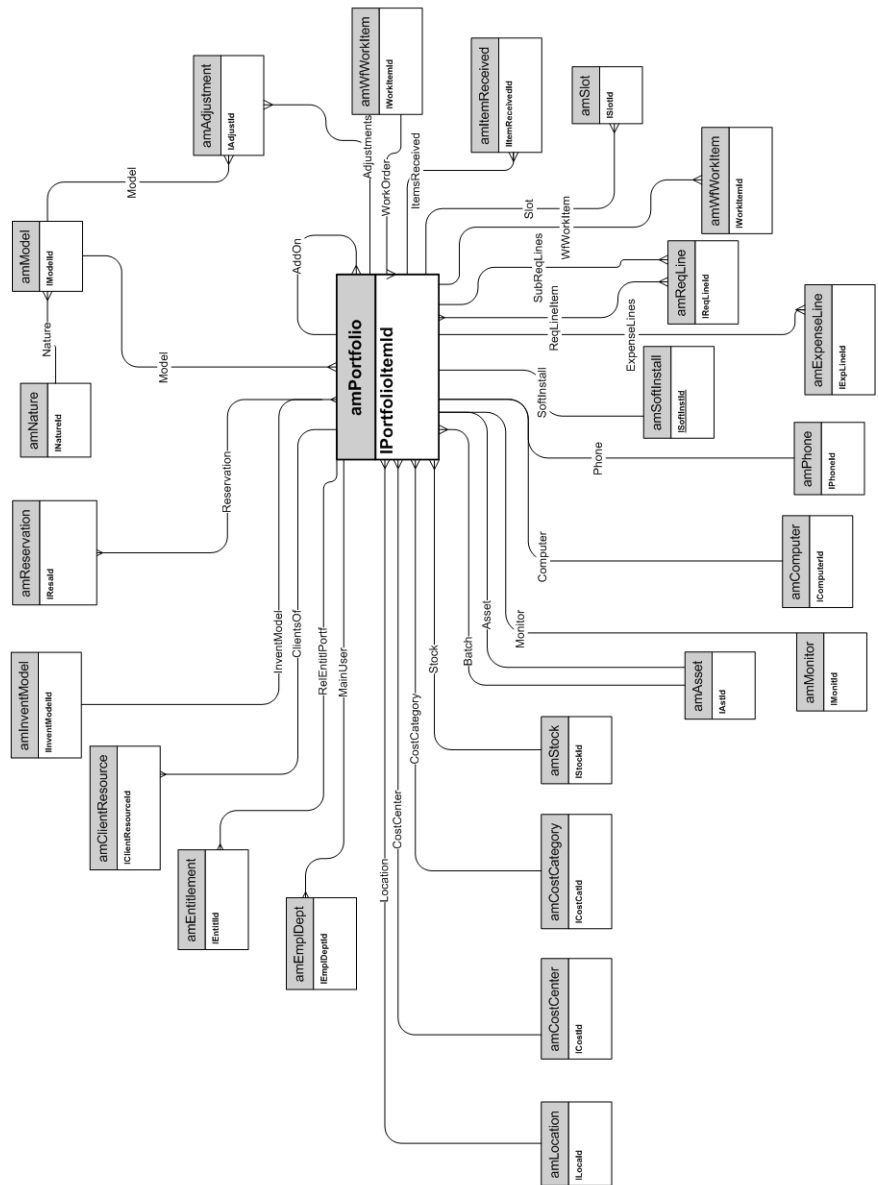
1 Portfolio

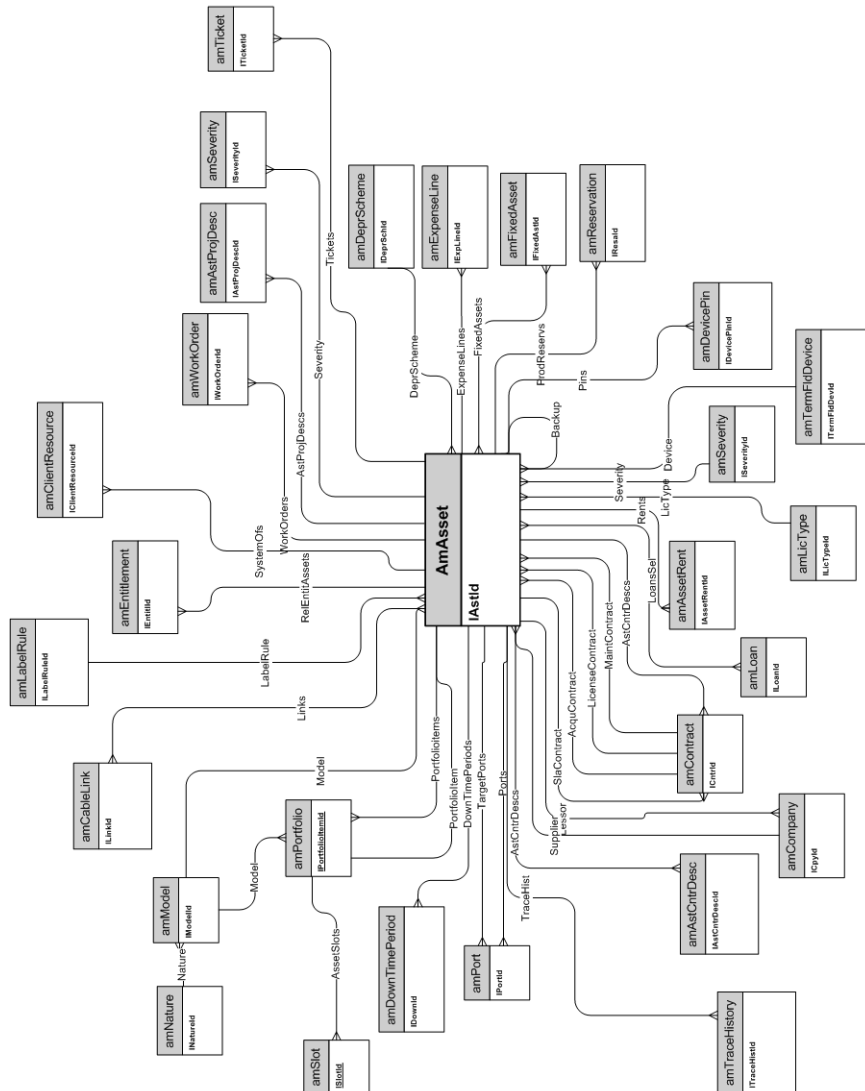
This chapter presents diagrams of the following physical data models:

- [Models](#) [page 10]
- [Portfolio items](#) [page 11]
- [Assets](#) [page 12]
- [Assets linked to the procurement cycle](#) [page 13]
- [IT equipment](#) [page 14]
- [Telephones](#) [page 15]
- [Ports and connections](#) [page 16]
- [Work Orders](#) [page 17]
- [Projects](#) [page 18]
- [Stocks](#) [page 19]
- [Software Installations](#) [page 20]
- [Cost Centers](#) [page 21]

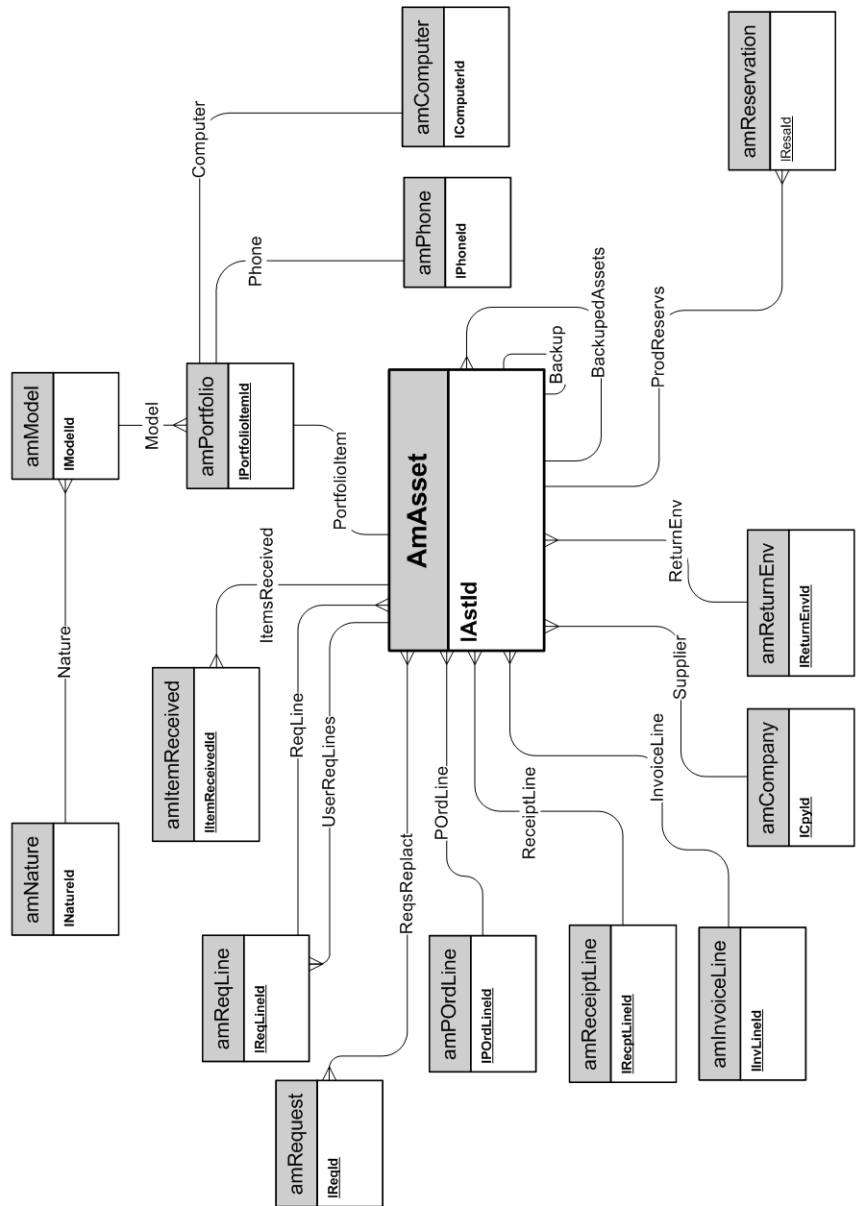


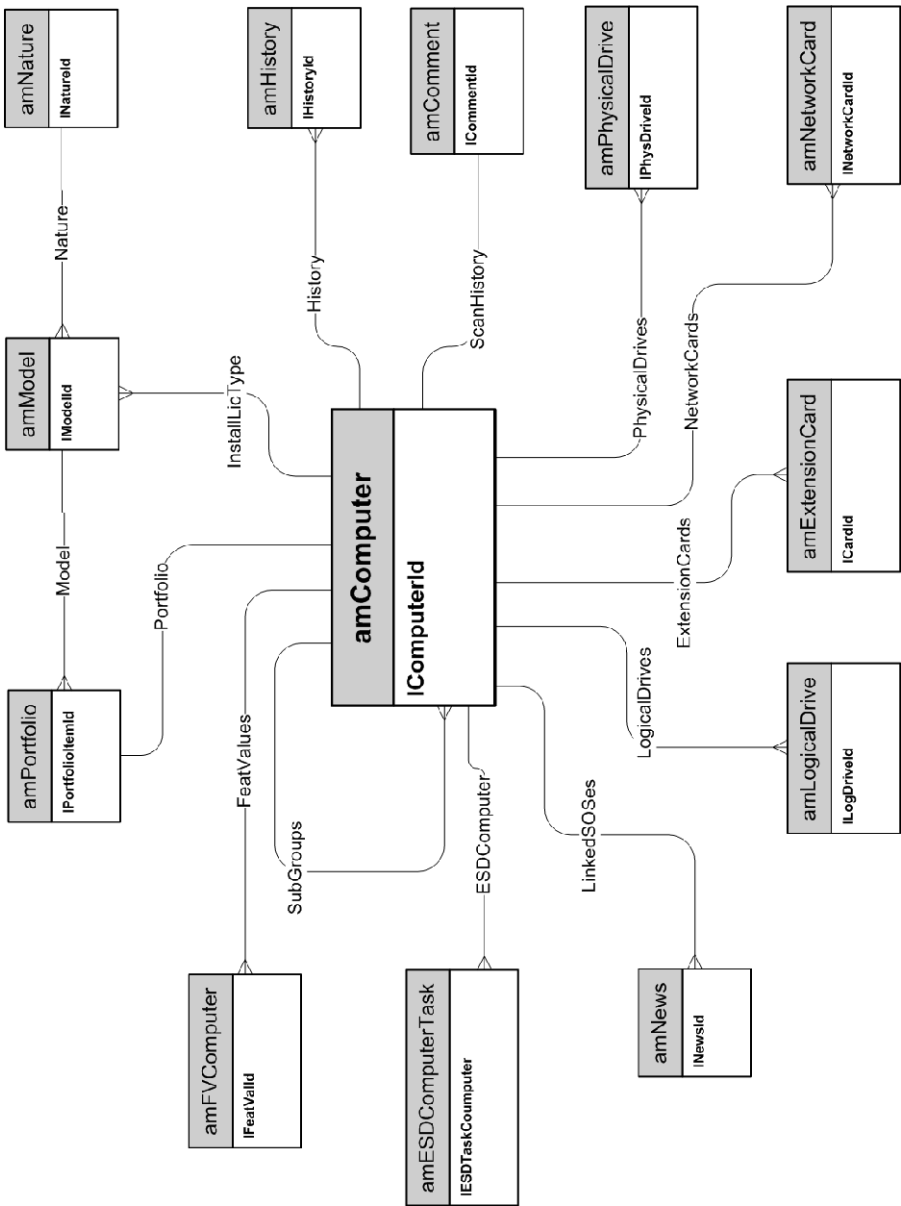
Portfolio items



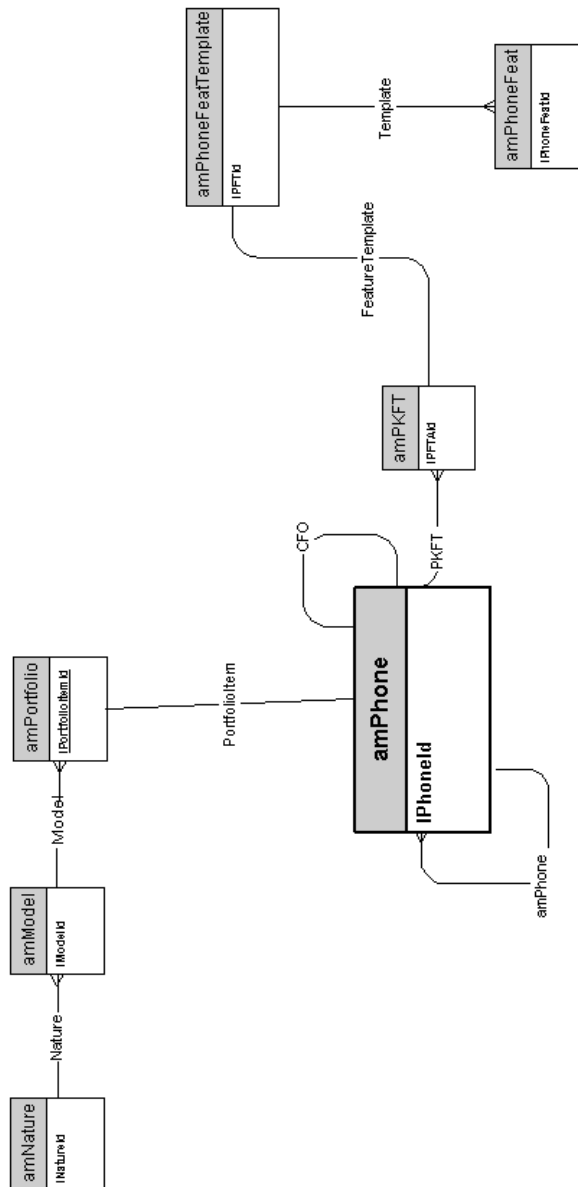


Assets linked to the procurement cycle

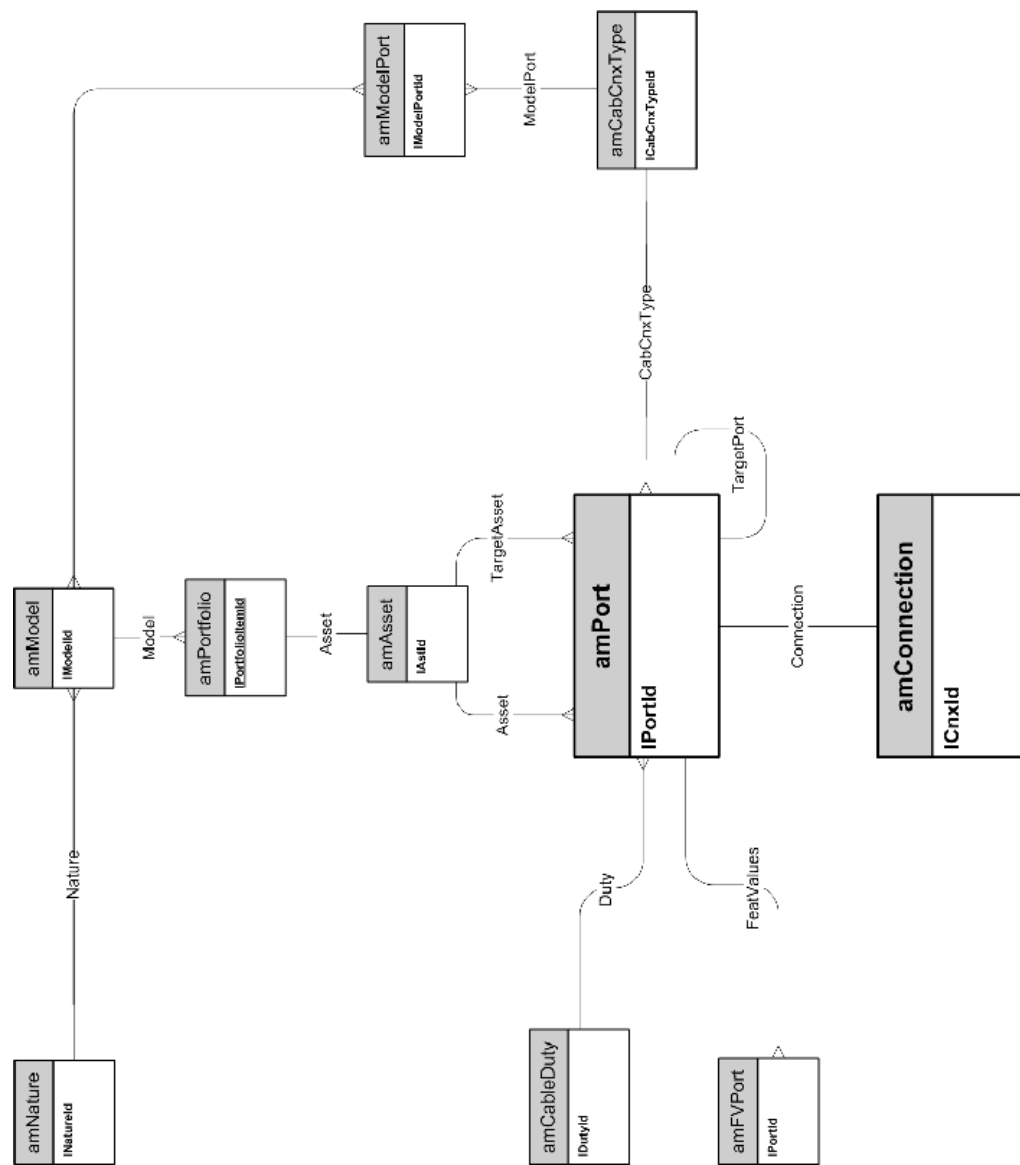


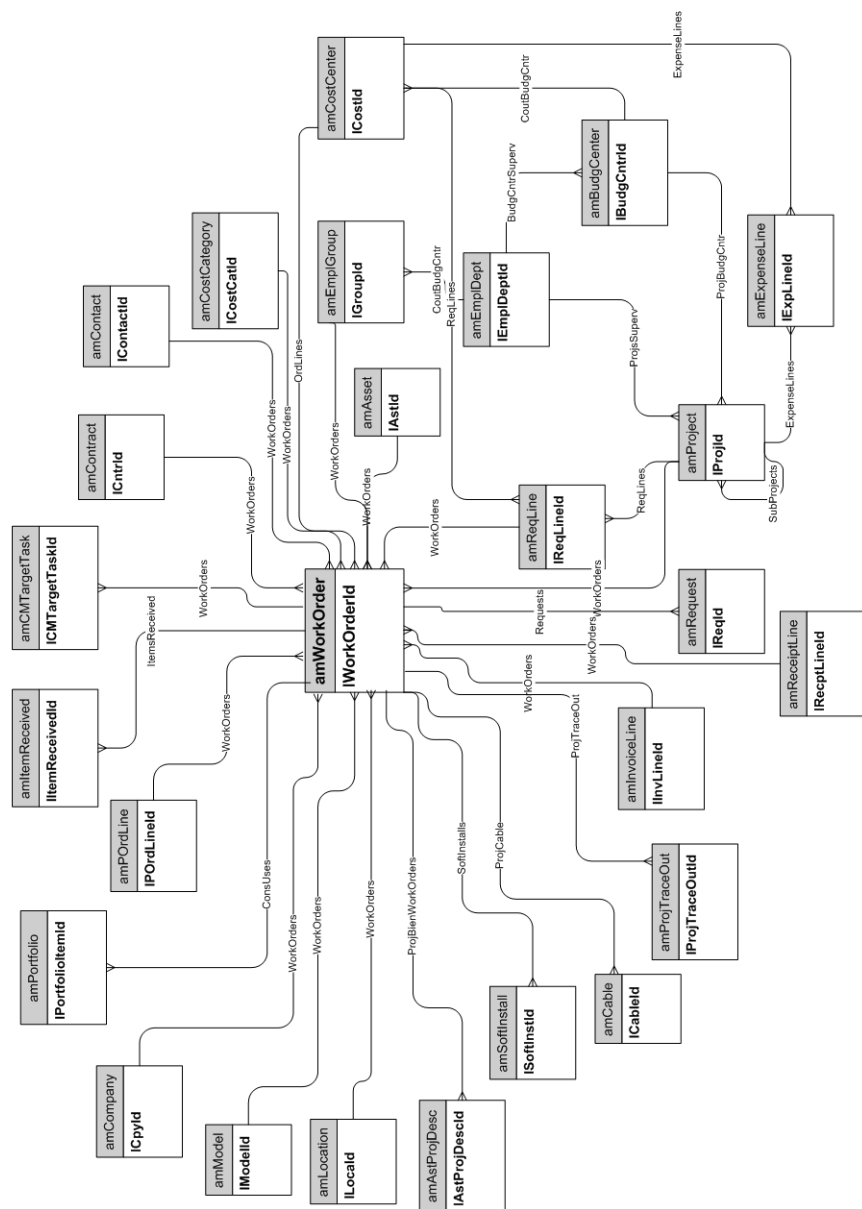


Telephones

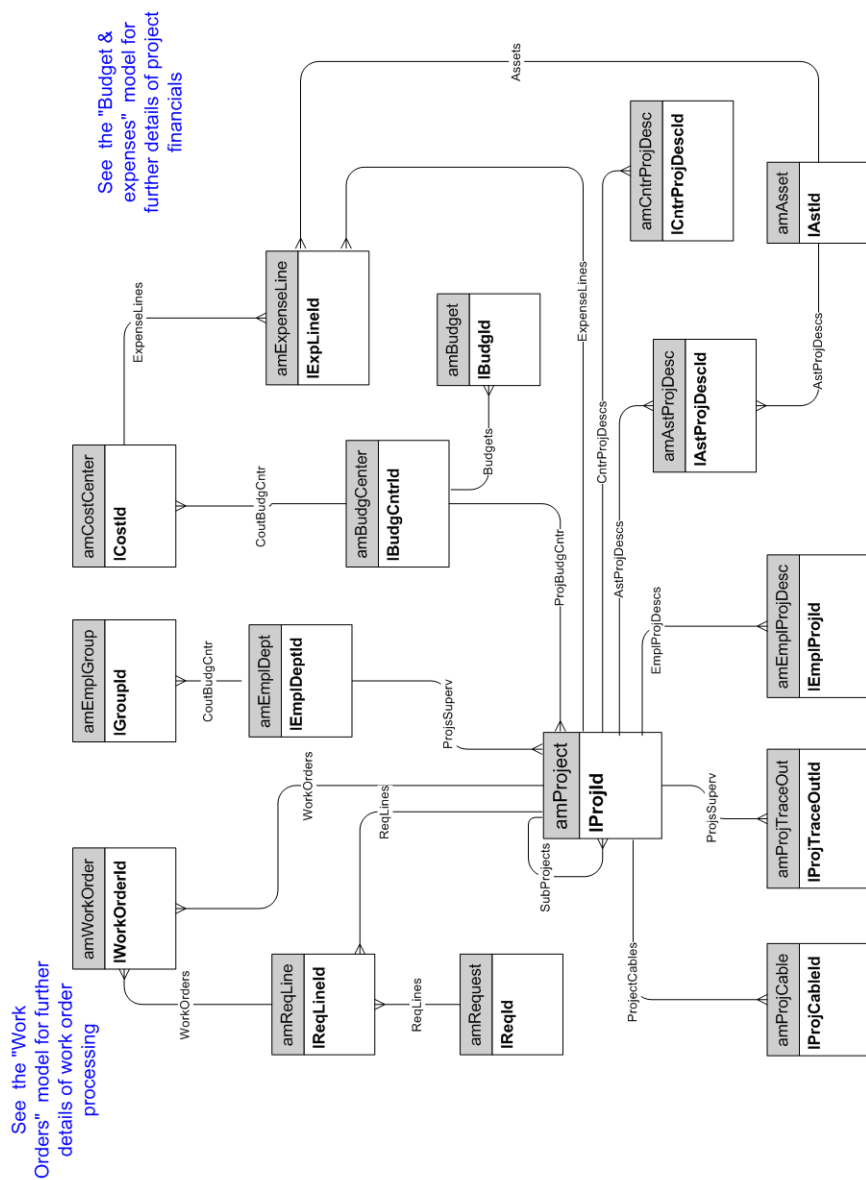


Ports and connections

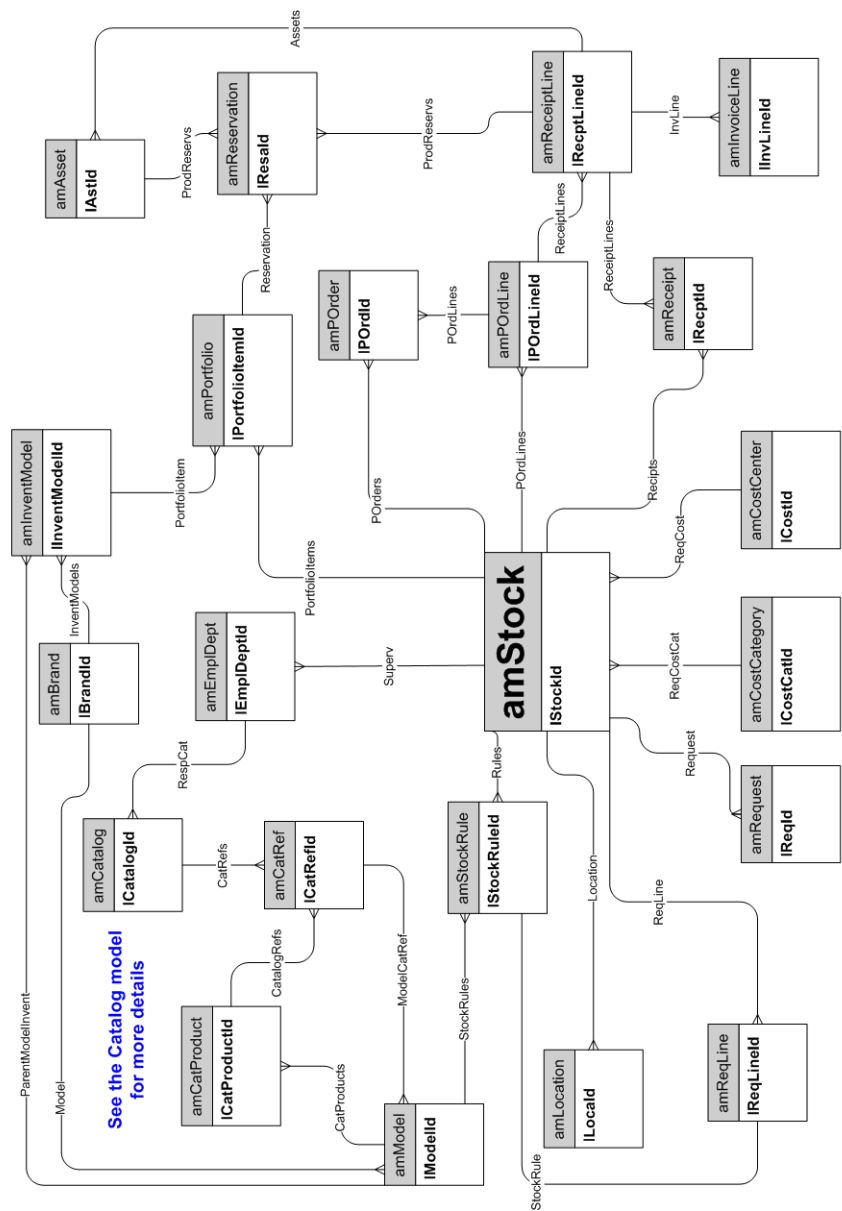




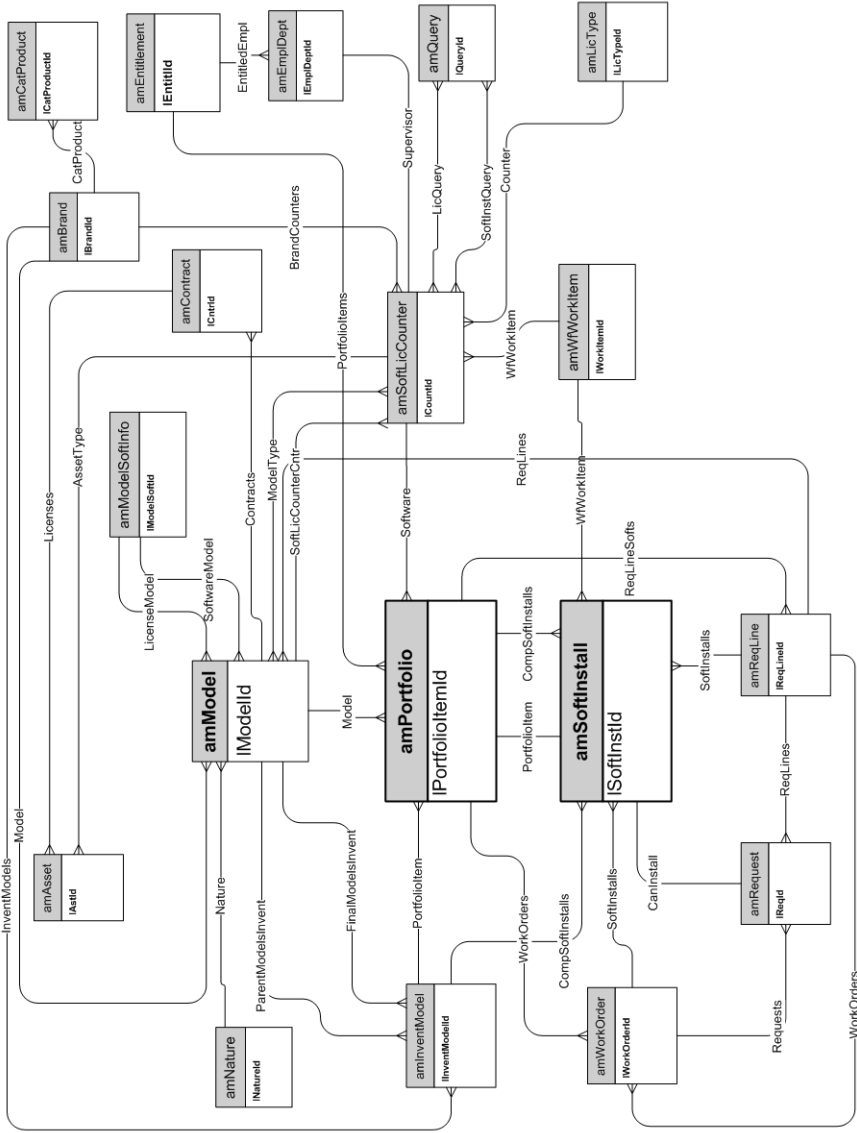
18 | HP Asset Manager 5.20 - Physical Data Models

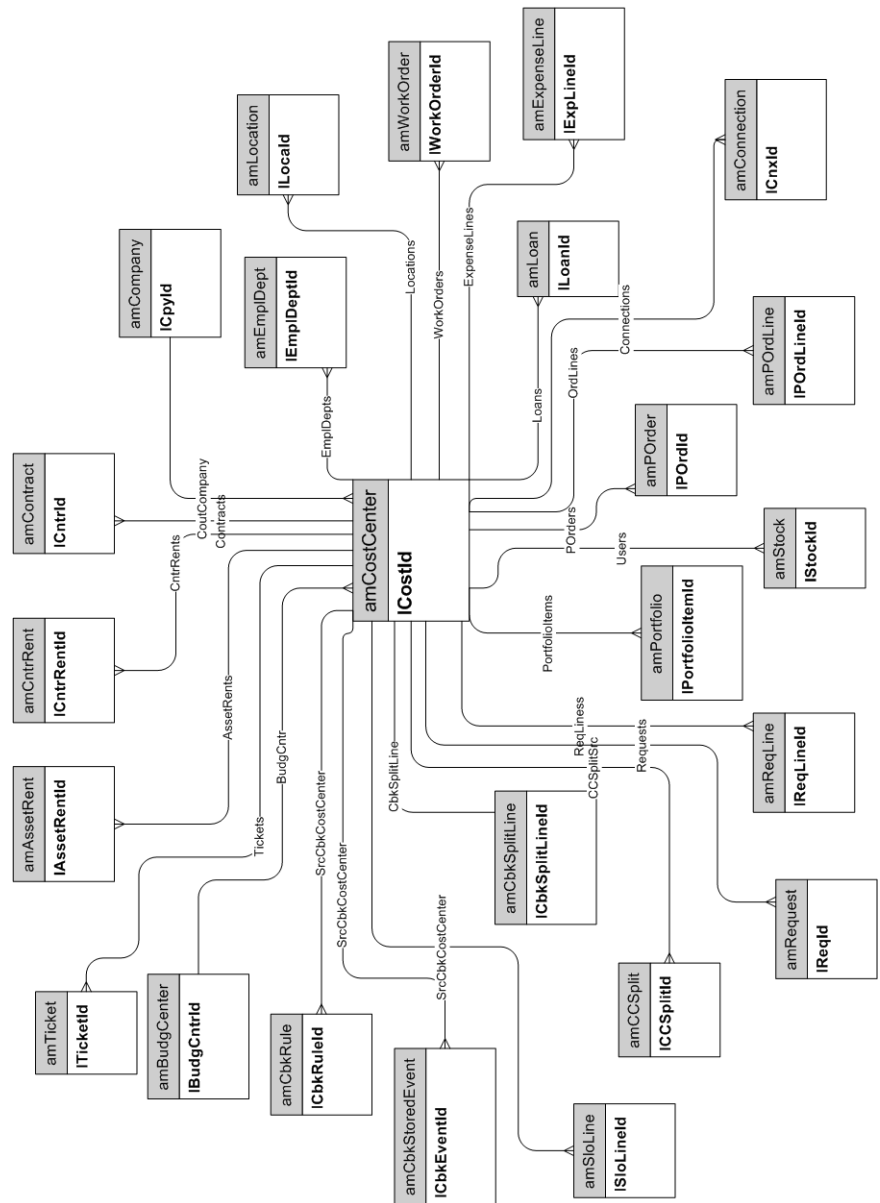


Stocks



Software Installations



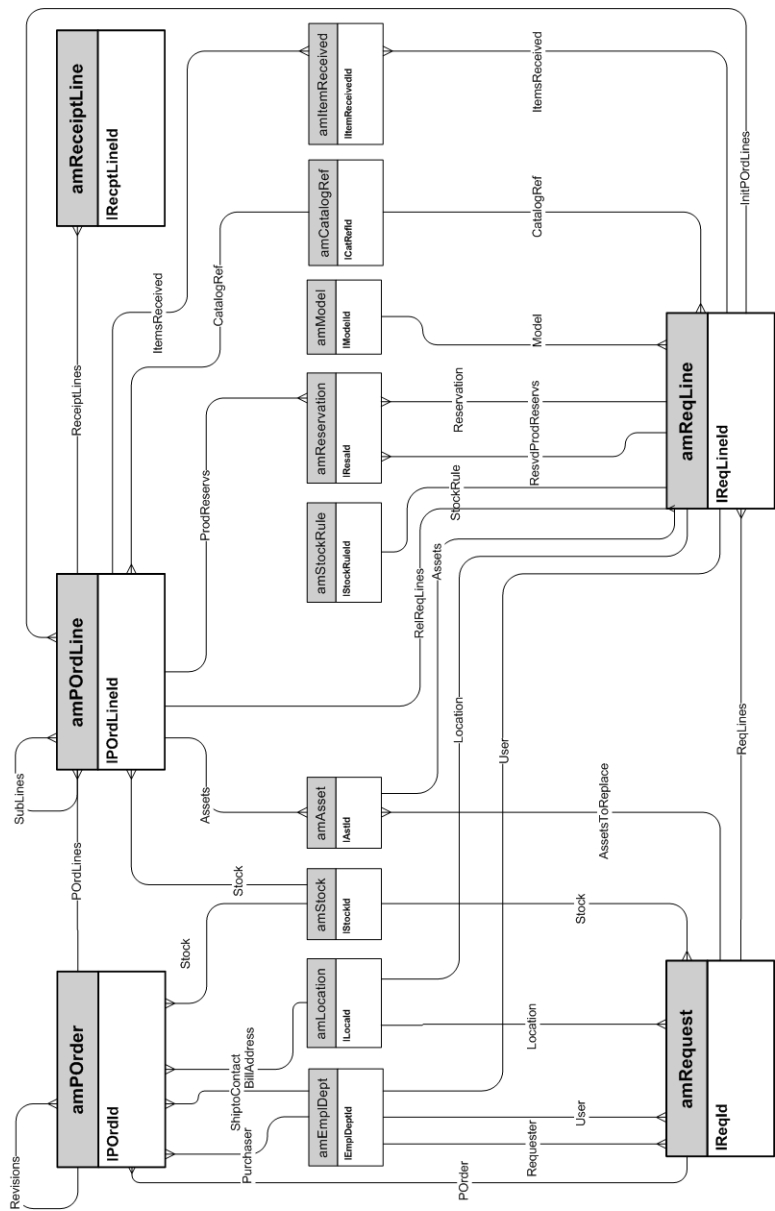


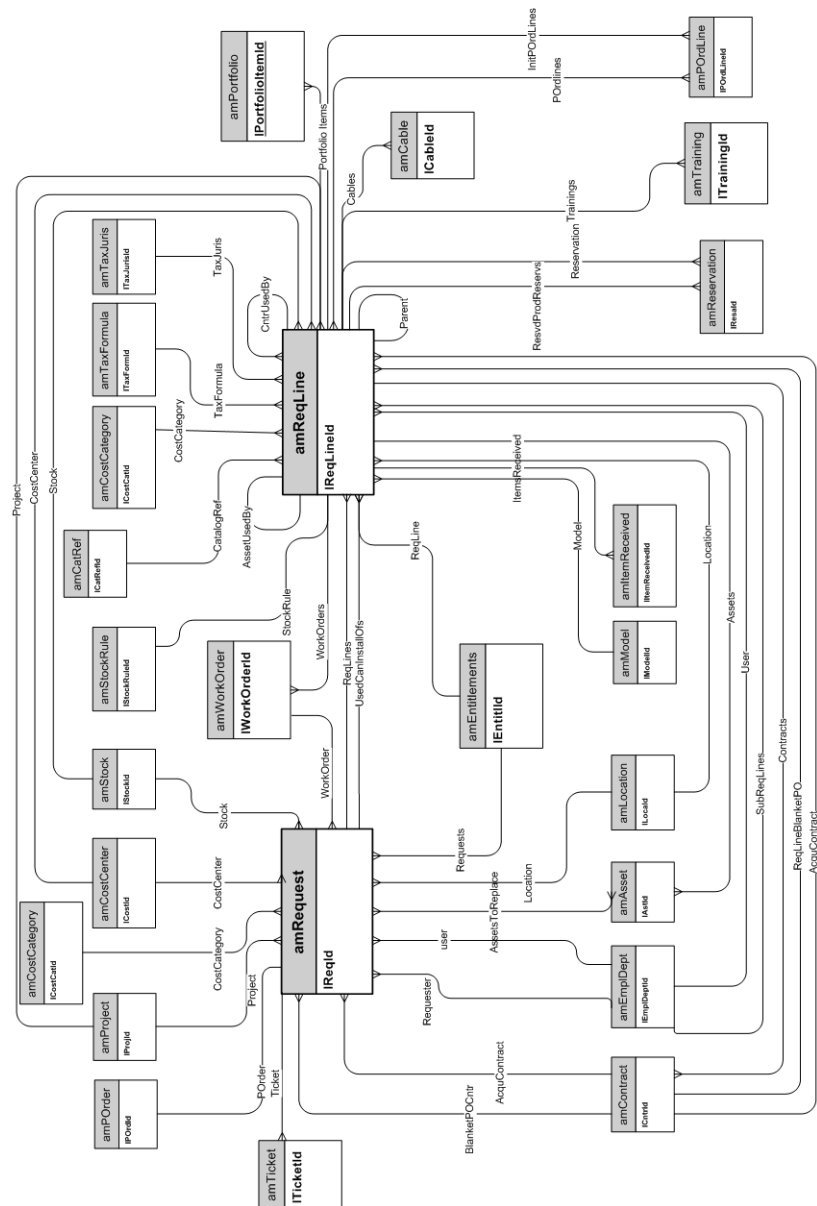
2 Procurement cycle

This chapter presents diagrams of the following physical data models:

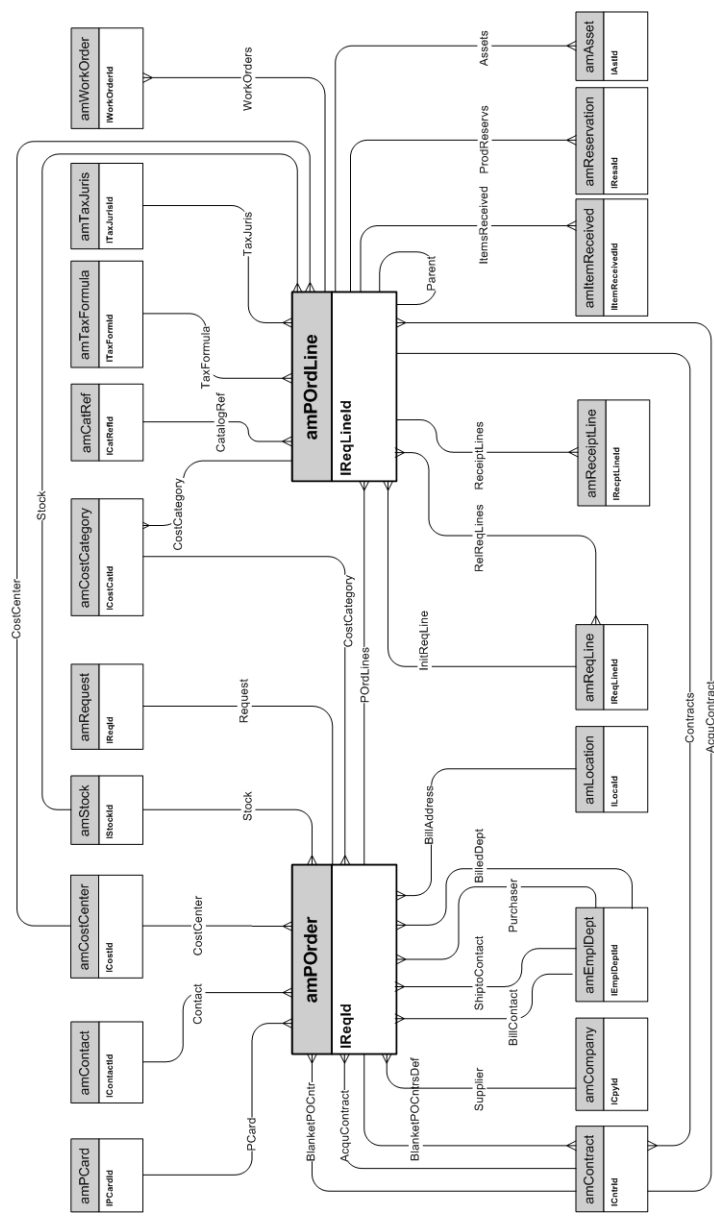
- [Procurement cycle](#) [page 24]
- [Purchase requests](#) [page 25]
- [Orders](#) [page 26]
- [Receptions](#) [page 27]
- [Invoices](#) [page 28]
- [Assets to be returned](#) [page 29]

Procurement cycle

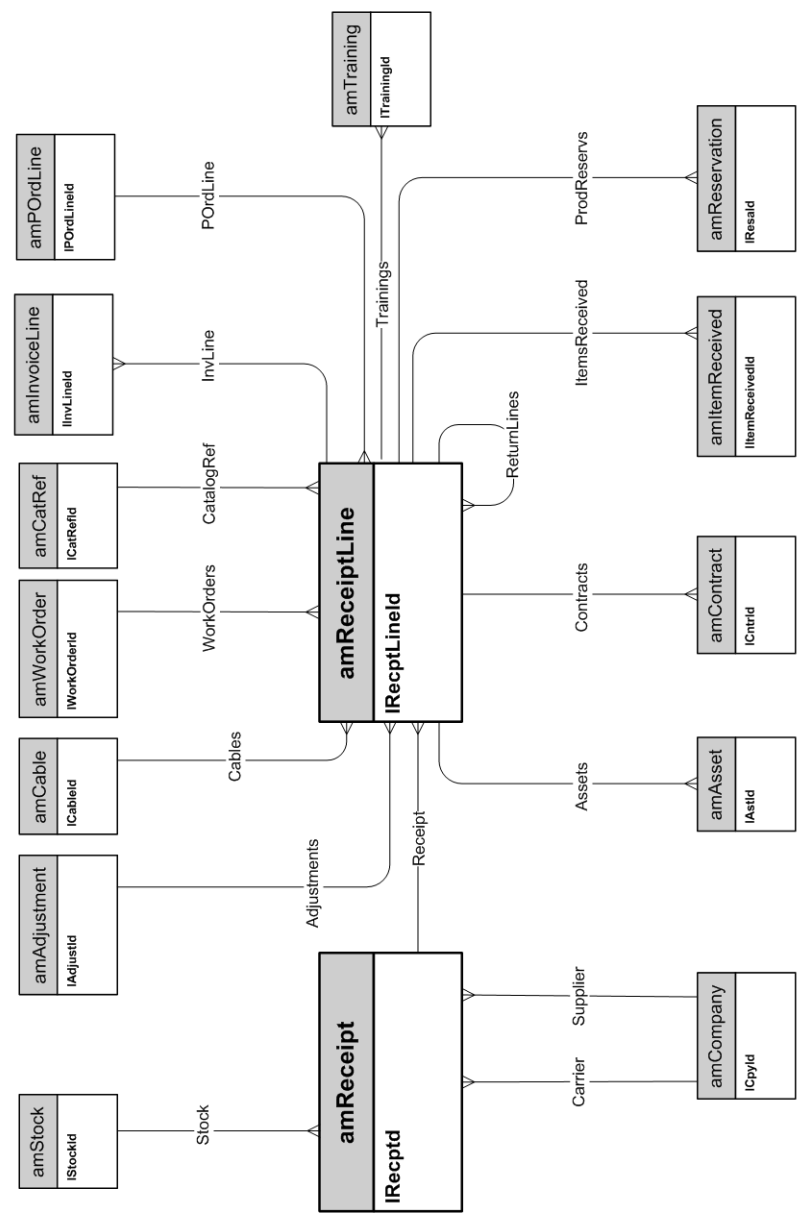


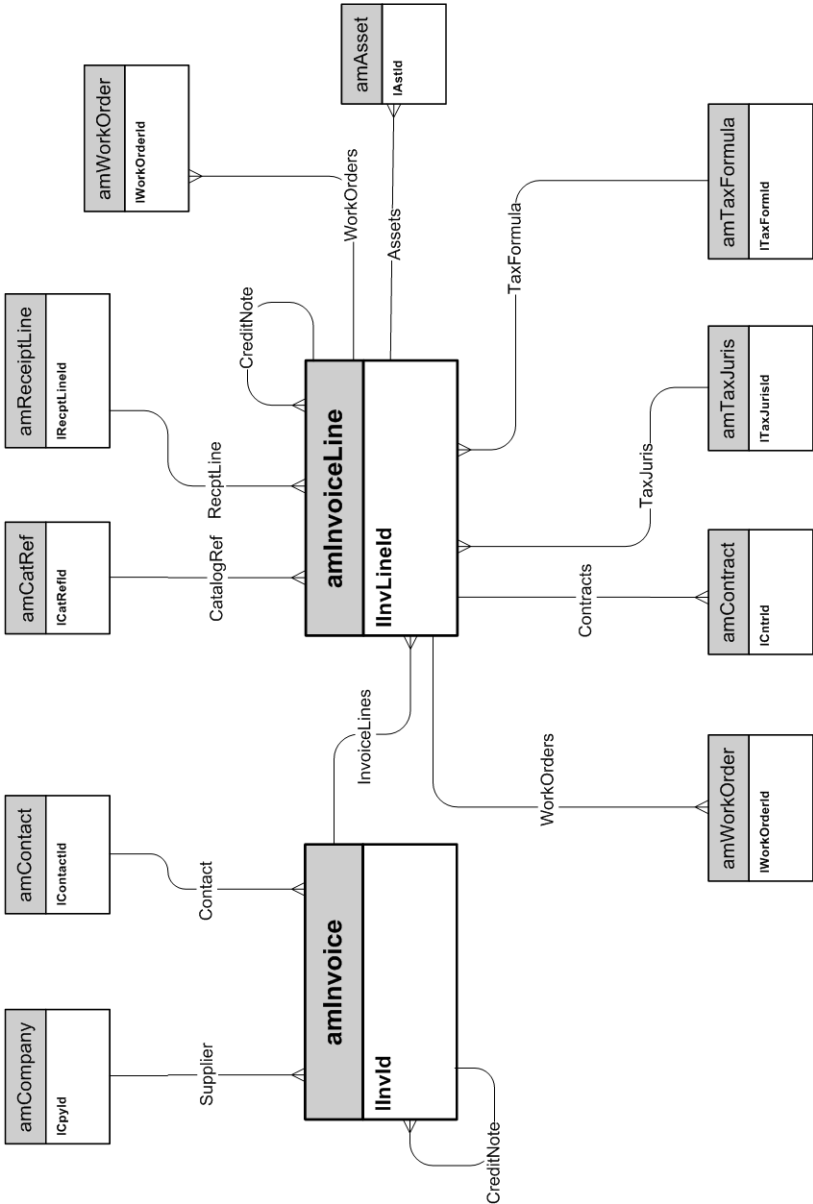


Orders

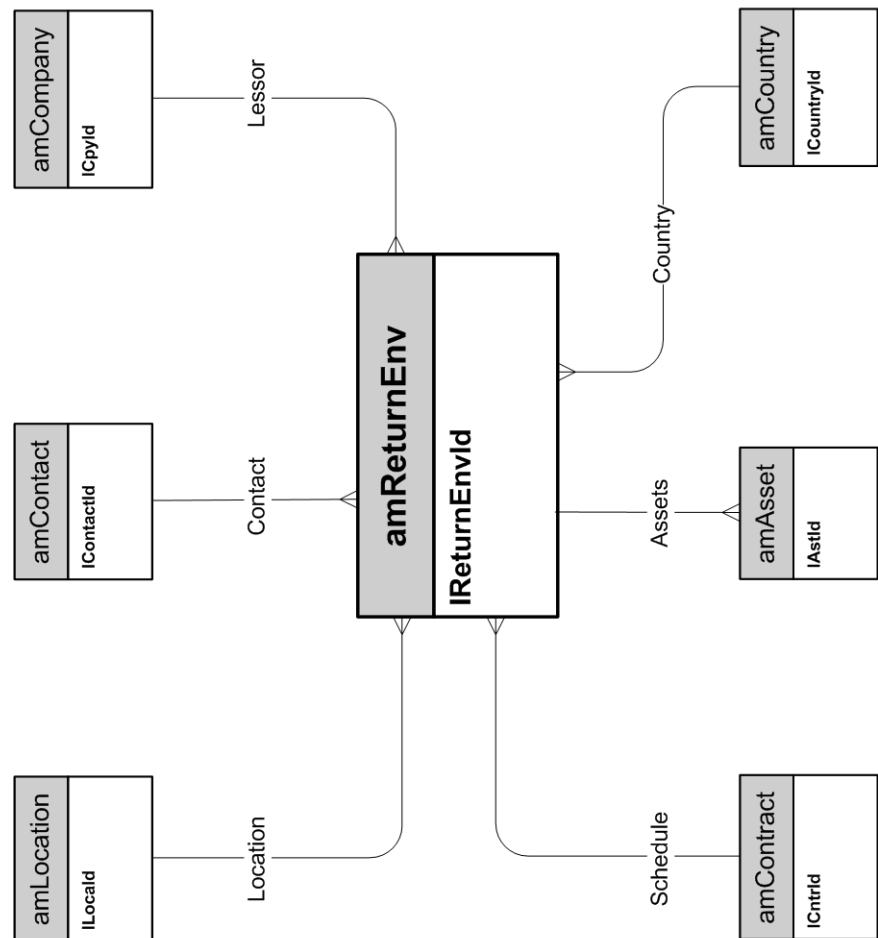


Receptions





Assets to be returned



3 Contracts

This chapter presents the diagram of the following physical data model:

- ◆ [Contracts](#) [page 32]

Contracts

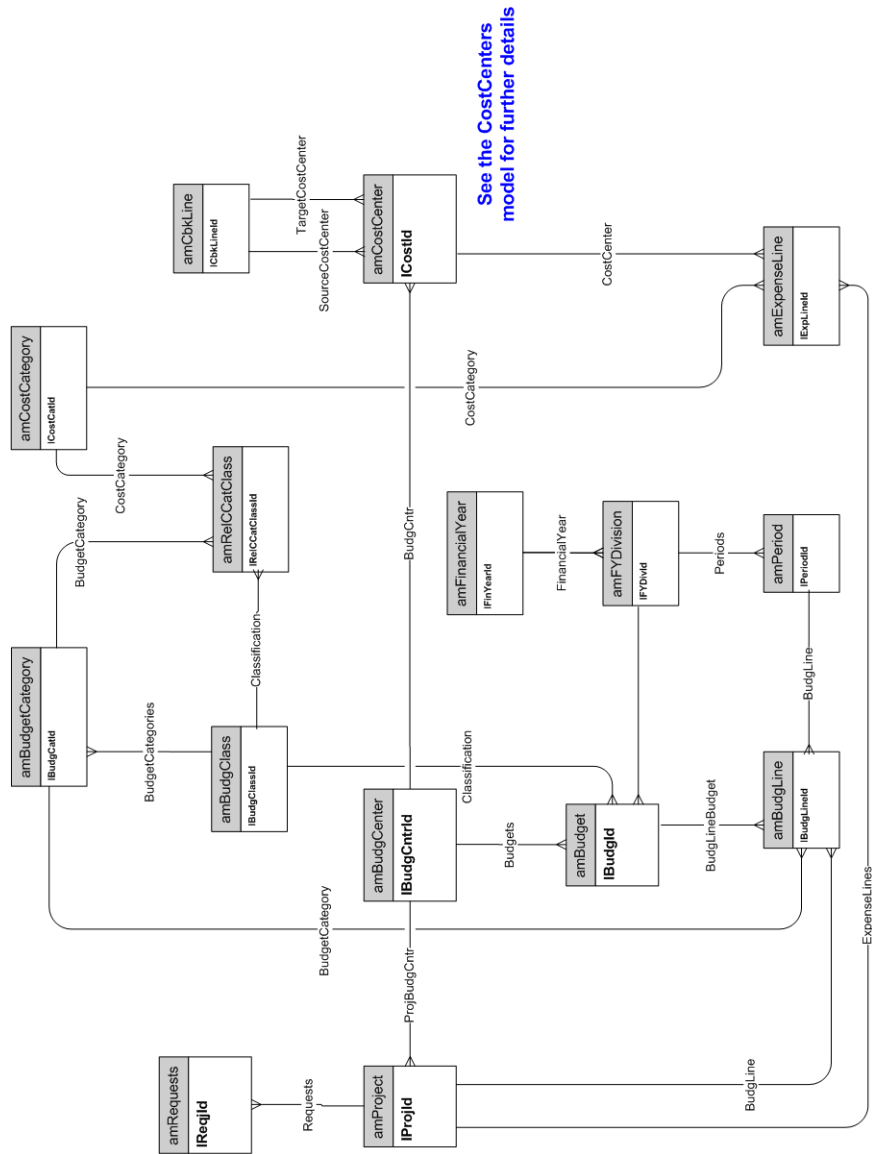


4 Financials

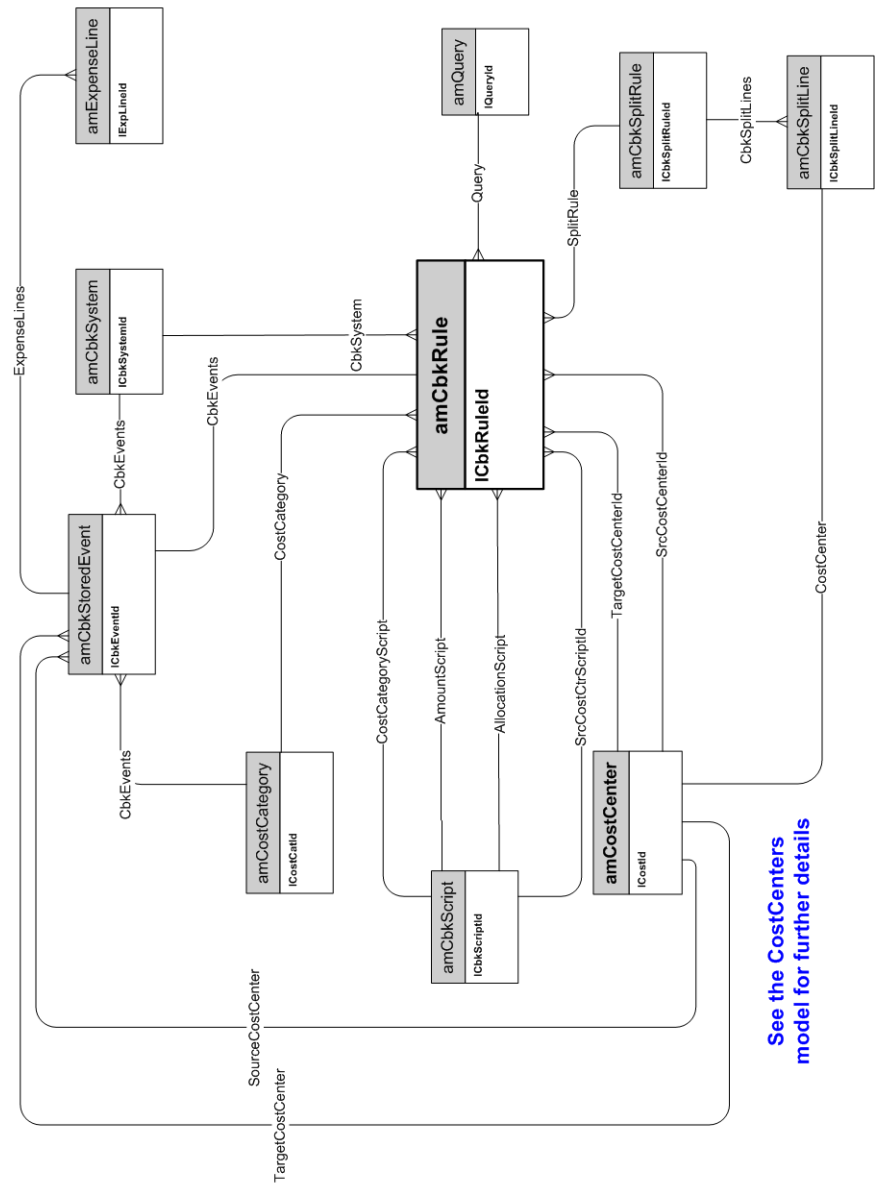
This chapter presents diagrams of the following physical data models:

- [Budget and expenses](#) [page 34]
- [Chargebacks](#) [page 35]
- [Taxes](#) [page 36]

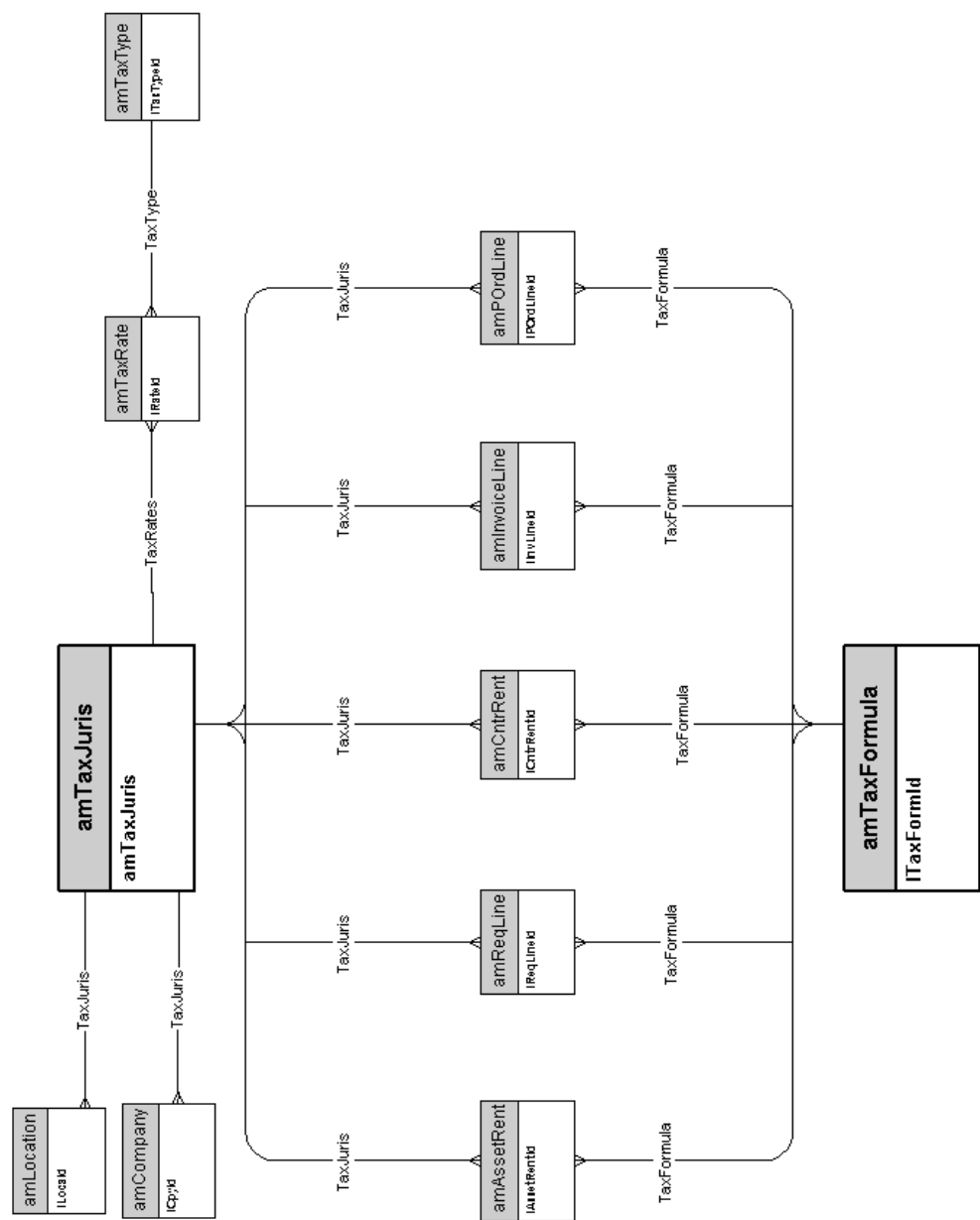
Budget and expenses



Chargebacks



See the CostCenters model for further details

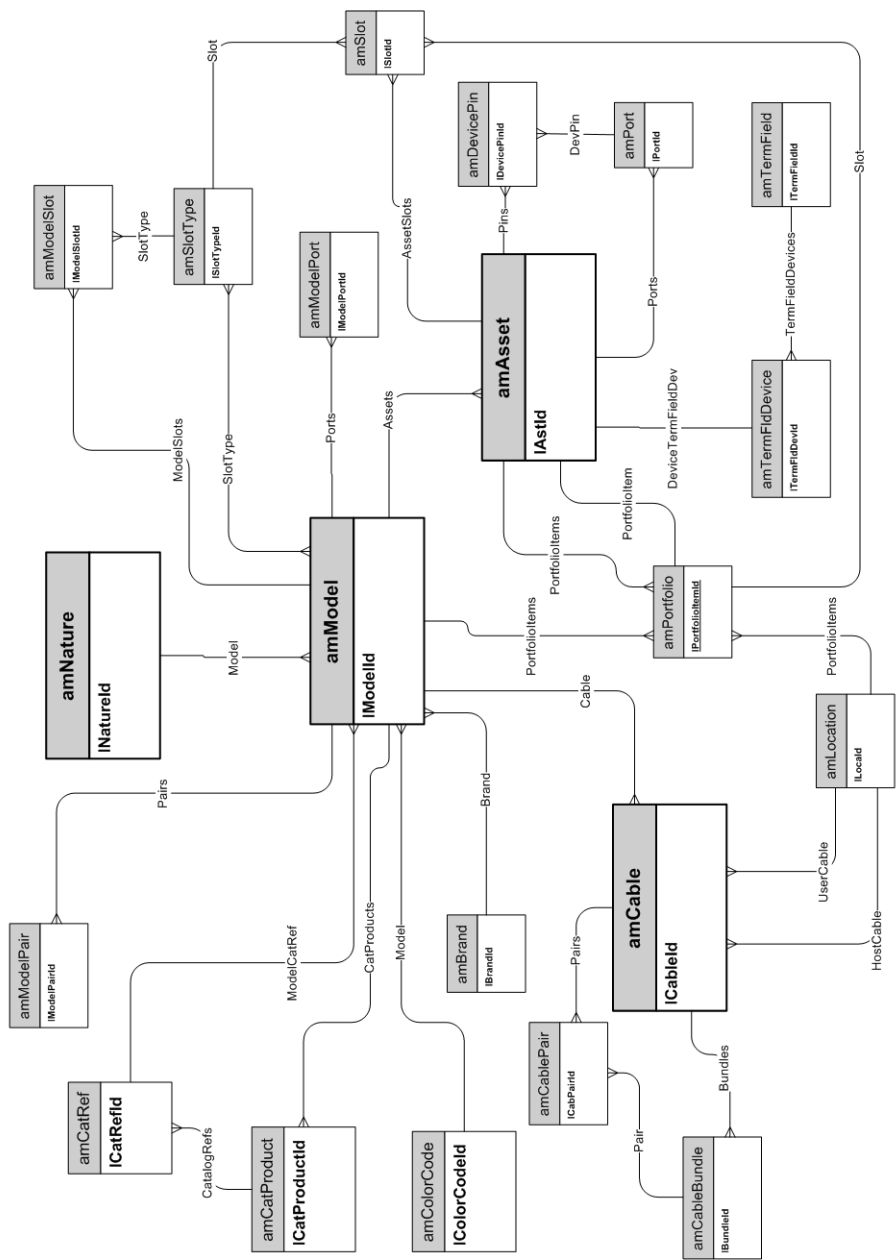


5 Cable and Circuit

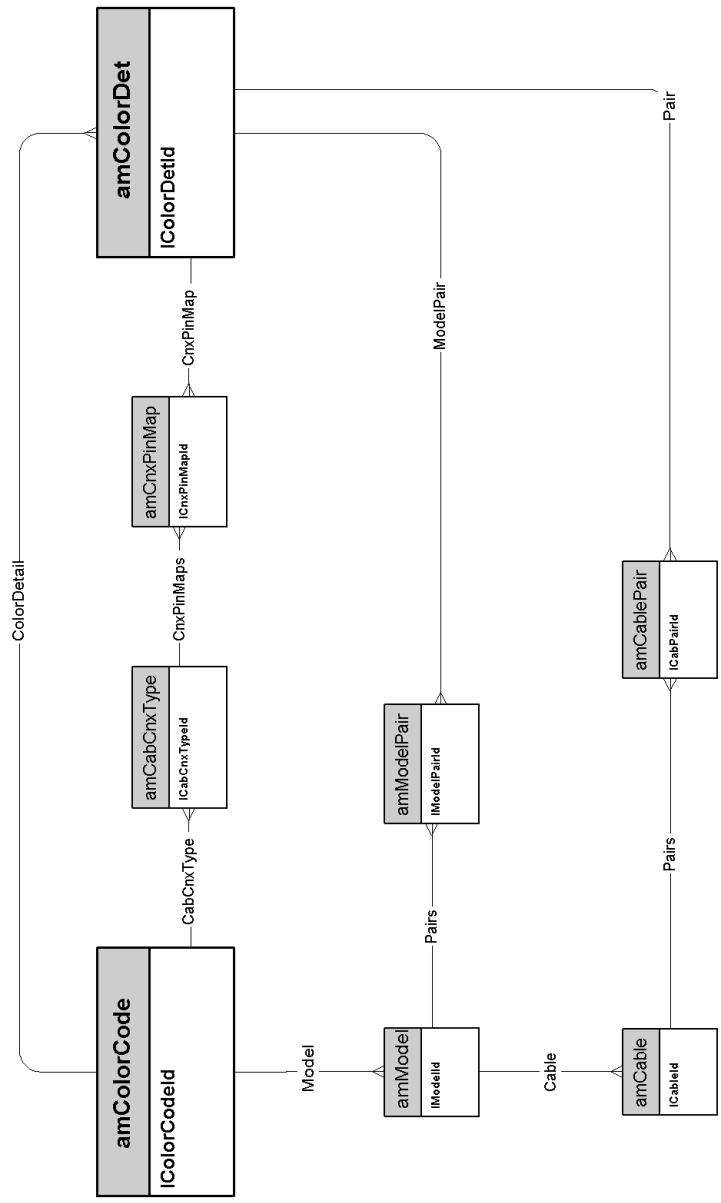
This chapter presents diagrams of the following physical data models:

- [Cables and cable devices](#) [page 38]
- [Color codes](#) [page 39]
- [Label rules](#) [page 40]
- [Pair/conductor types](#) [page 41]
- [Cable duties](#) [page 42]
- [Slots](#) [page 43]
- [Topologies](#) [page 44]
- [Topology groups](#) [page 45]
- [Termination-field configurations](#) [page 46]
- [Cables and cable devices](#) [page 38]

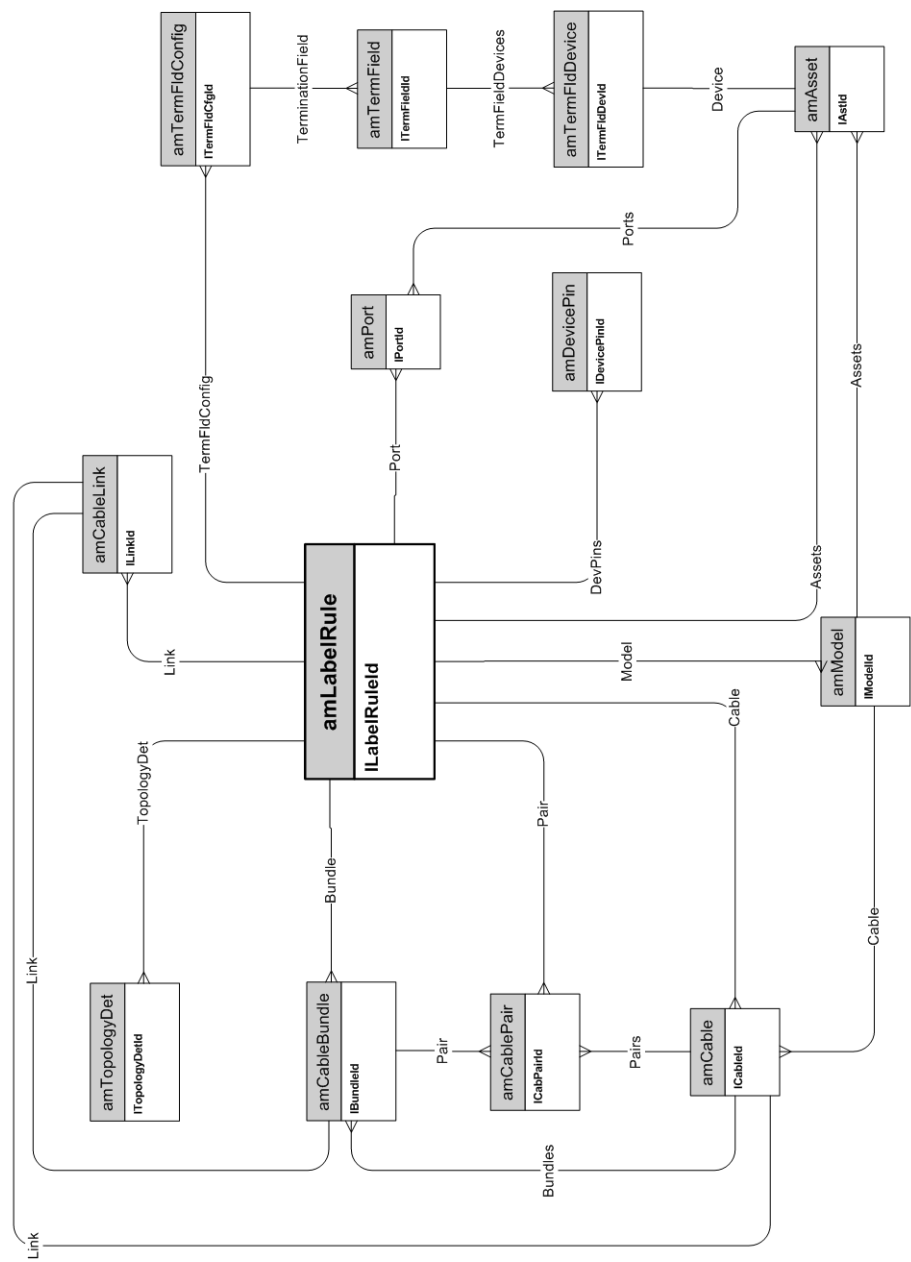
Cables and cable devices



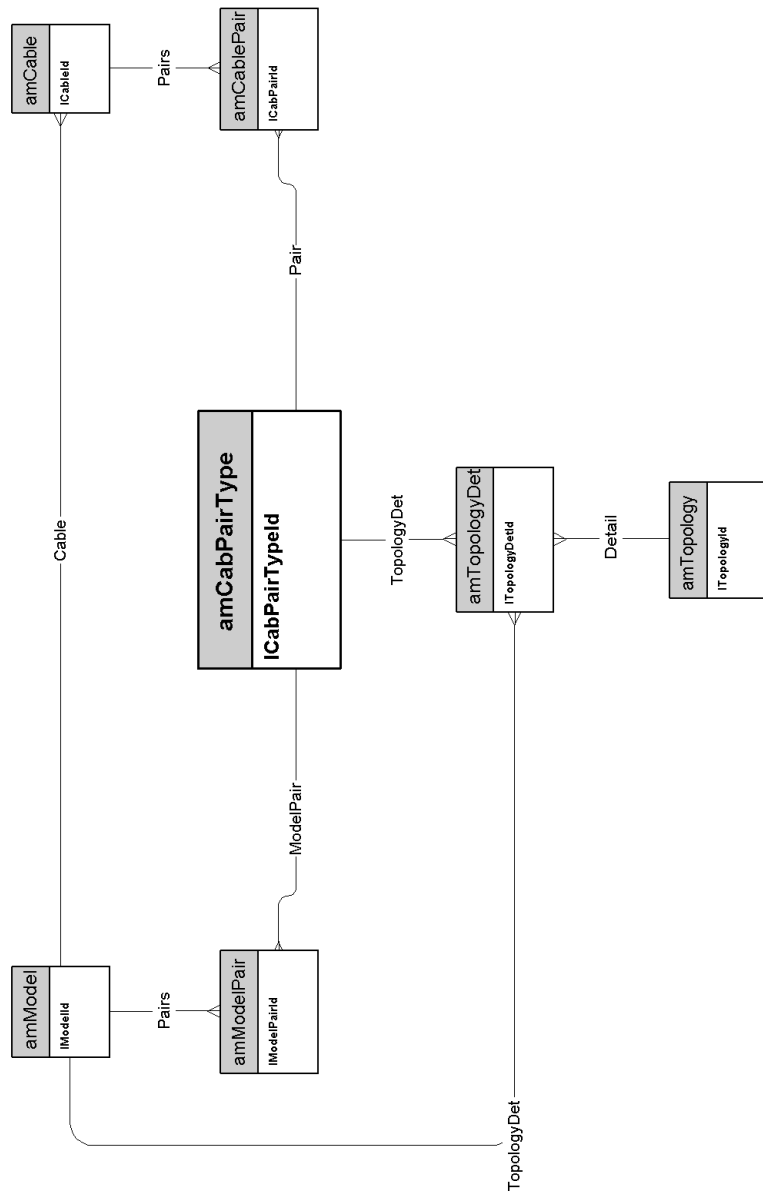
Color codes



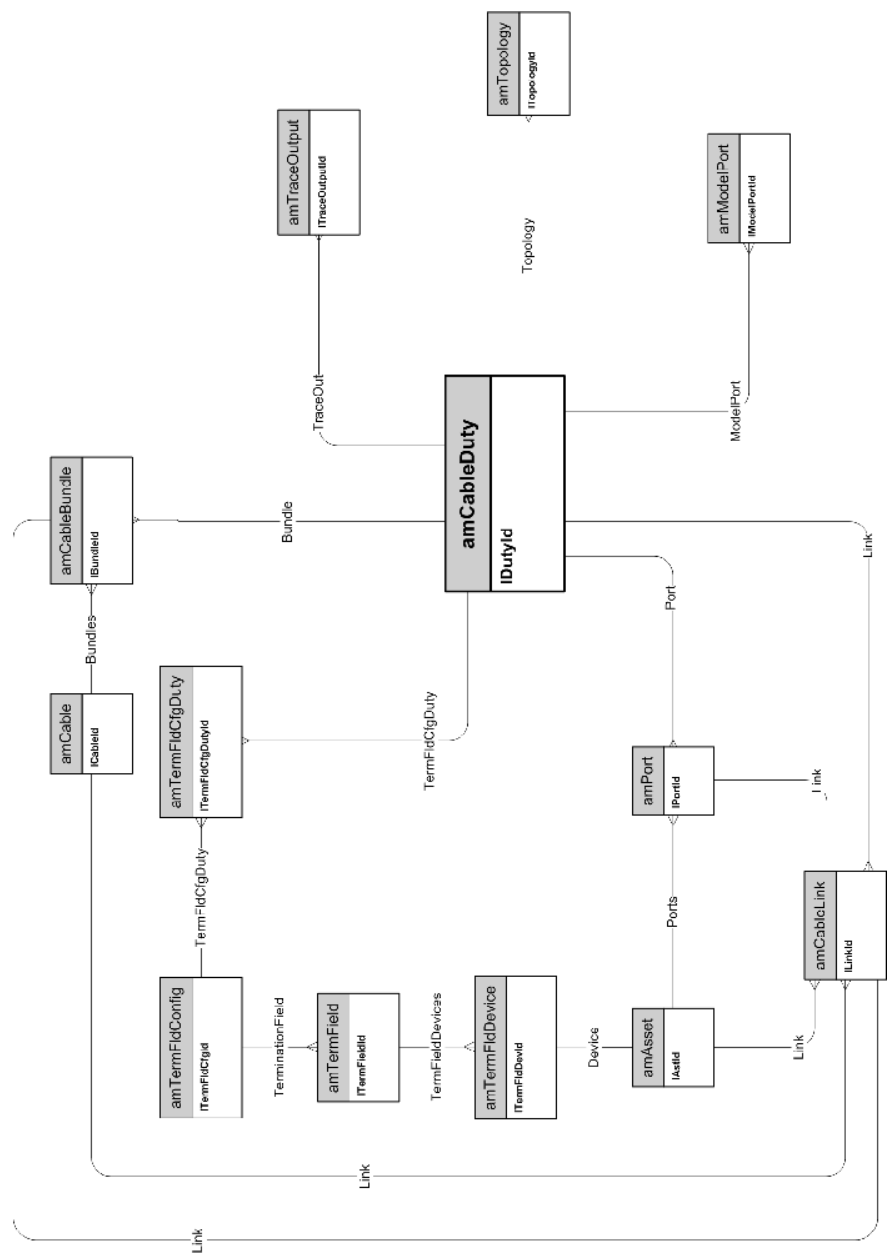
Label rules



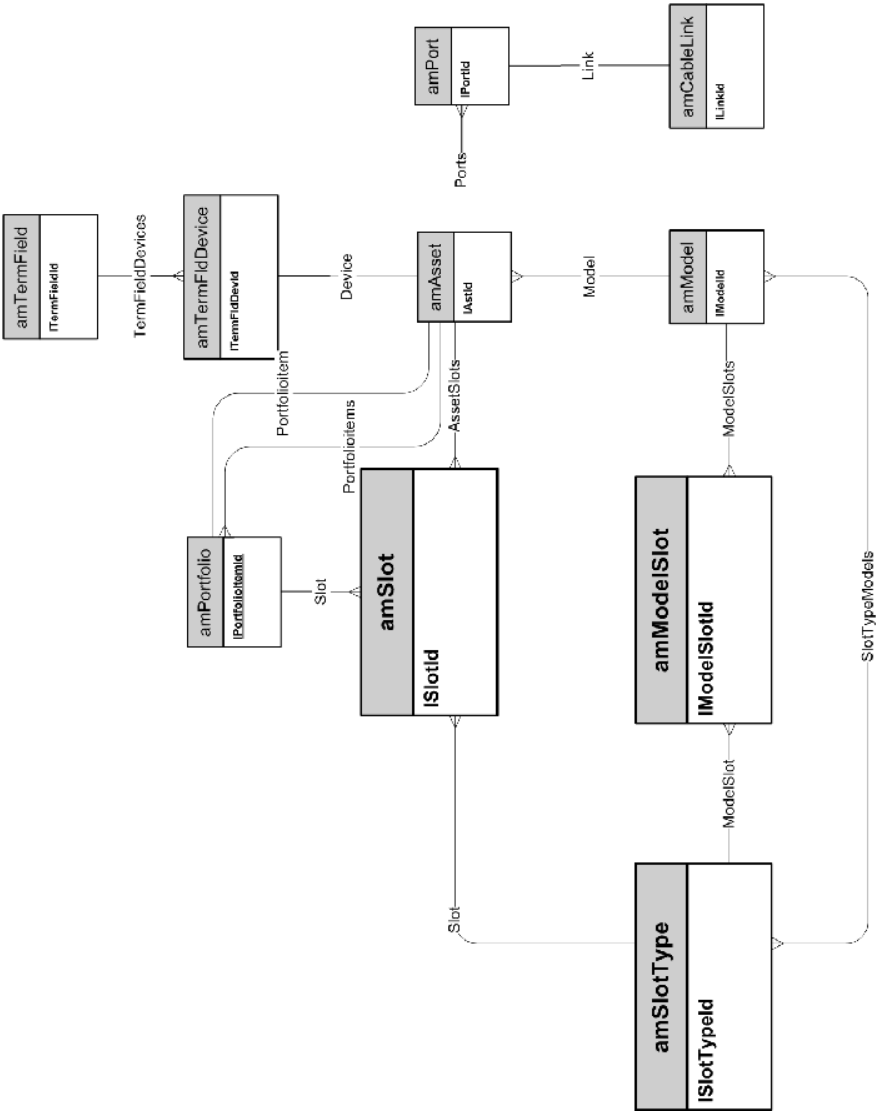
Pair/conductor types



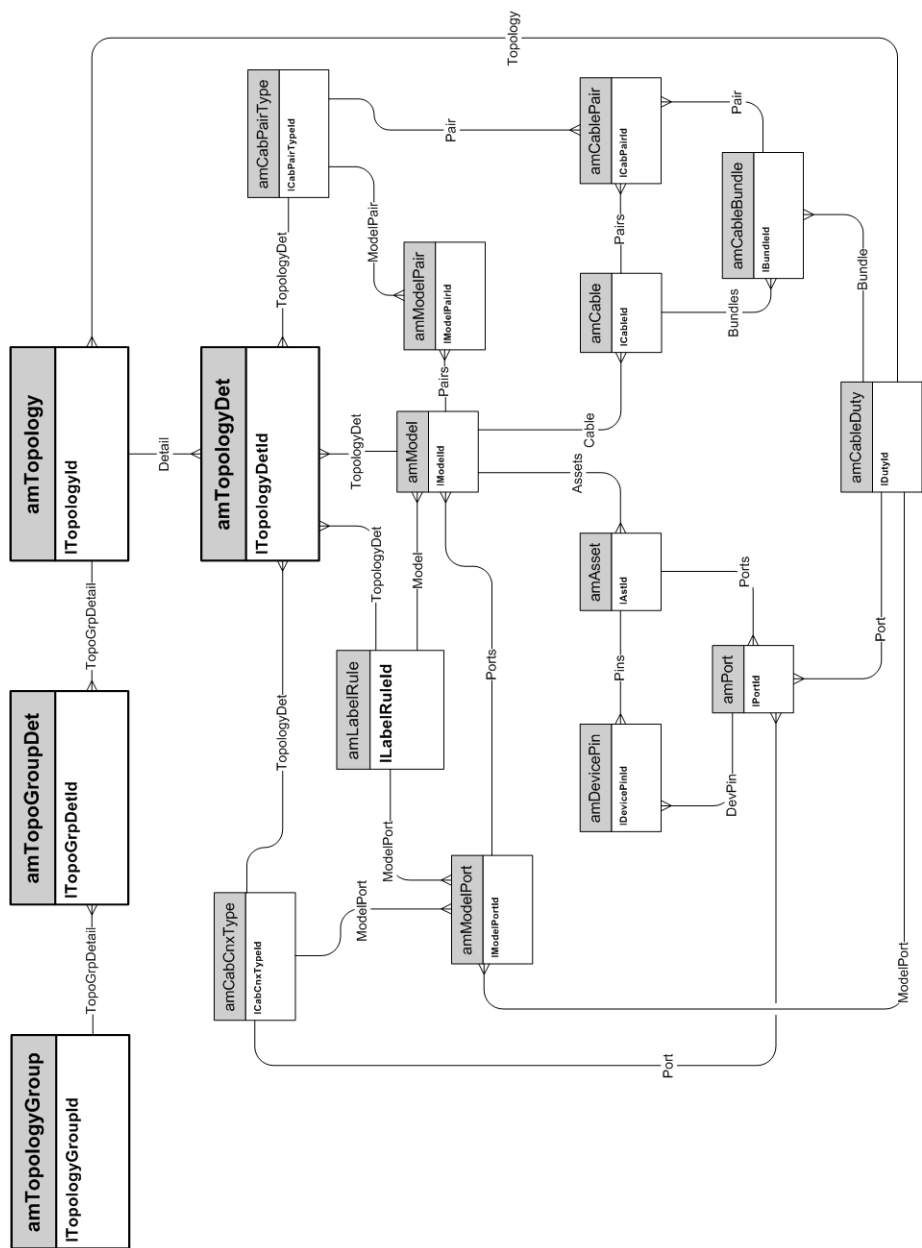
Cable duties



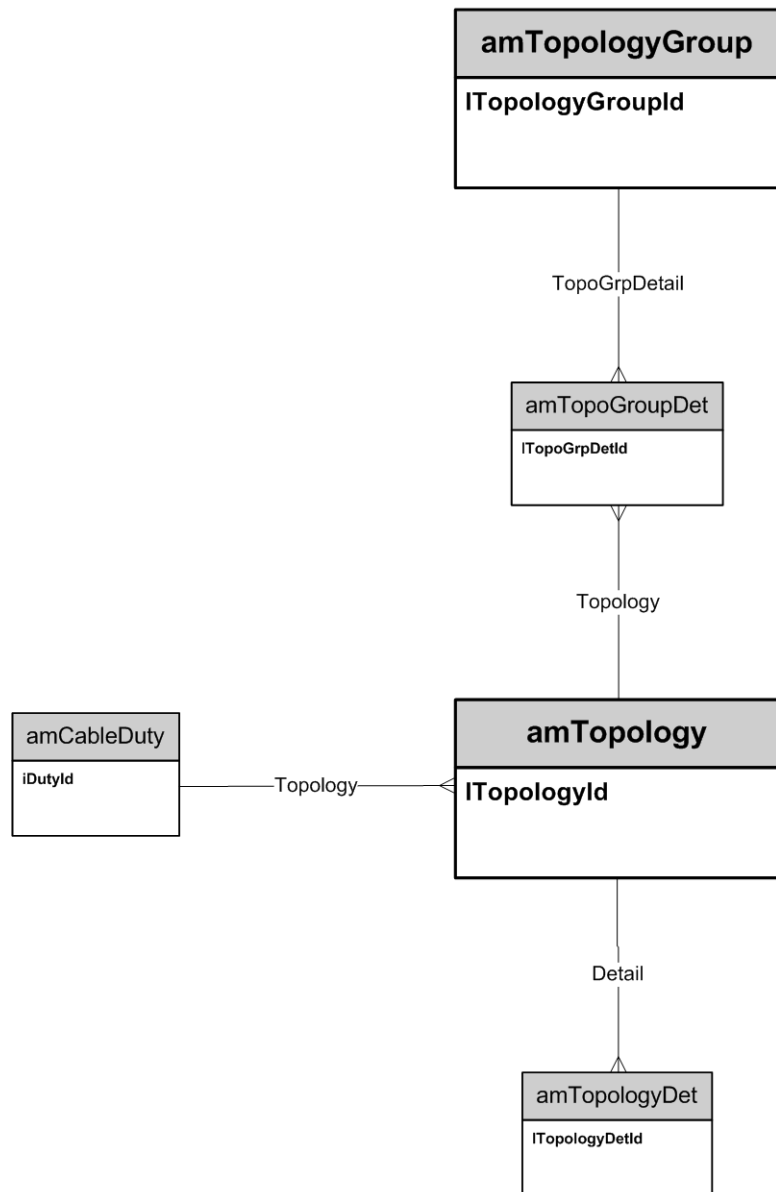
Slots



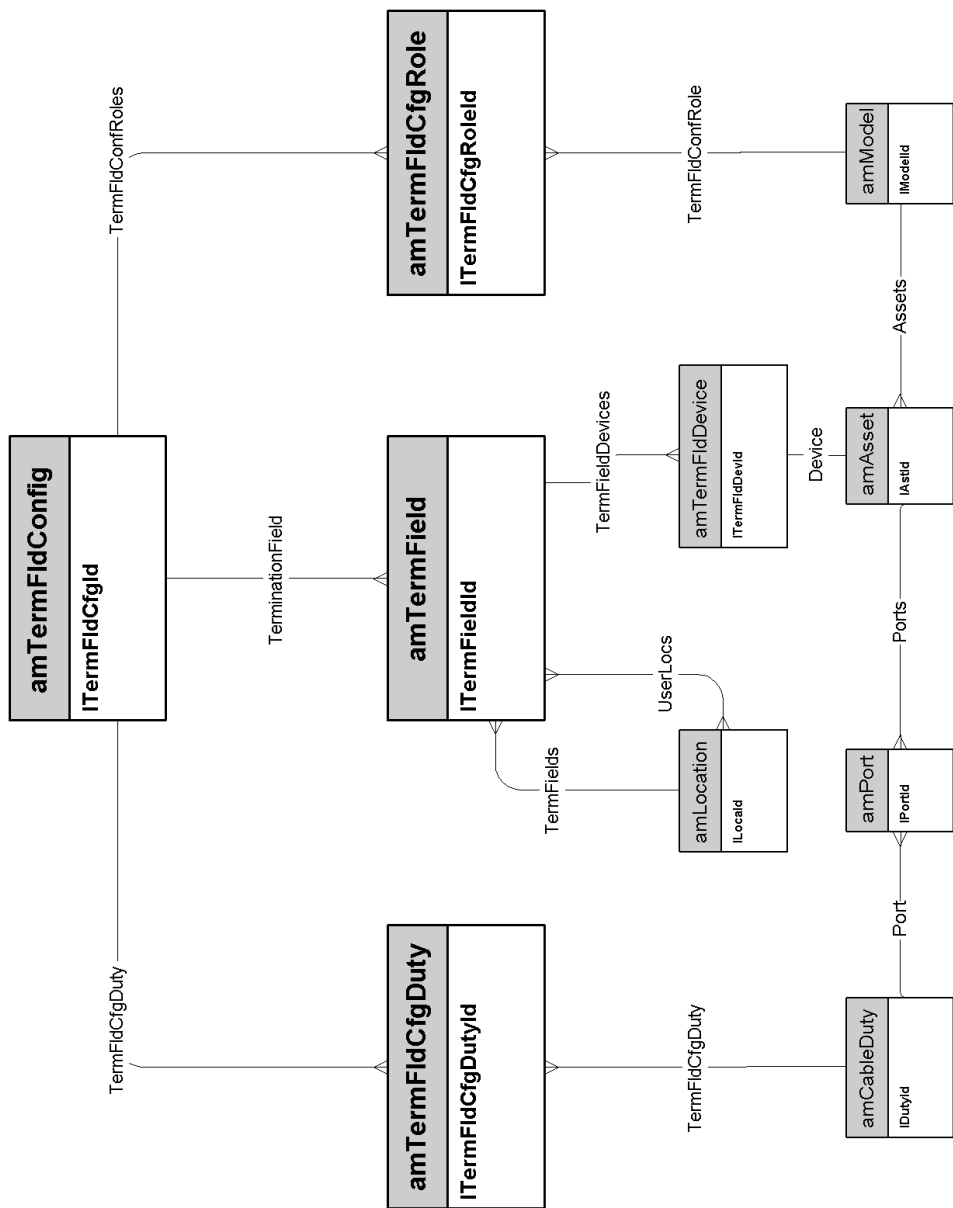
Topologies

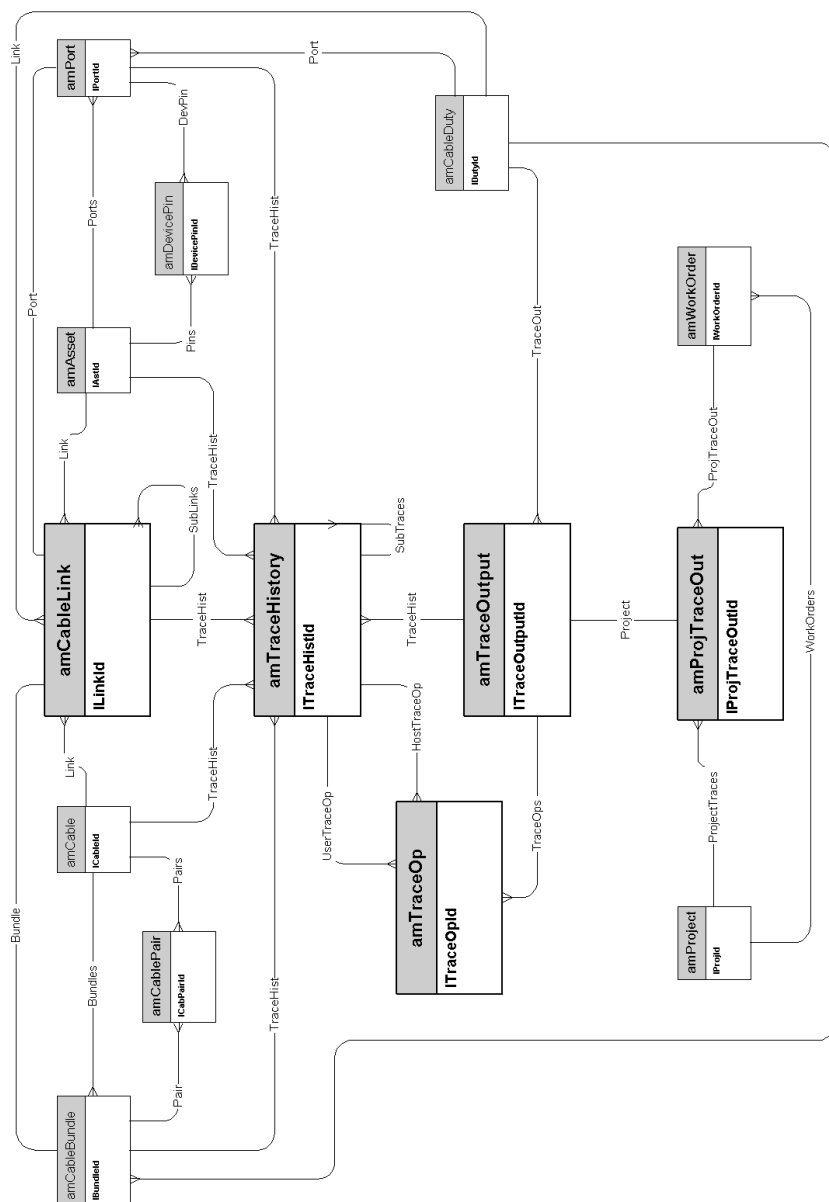


Topology groups



Termination-field configurations



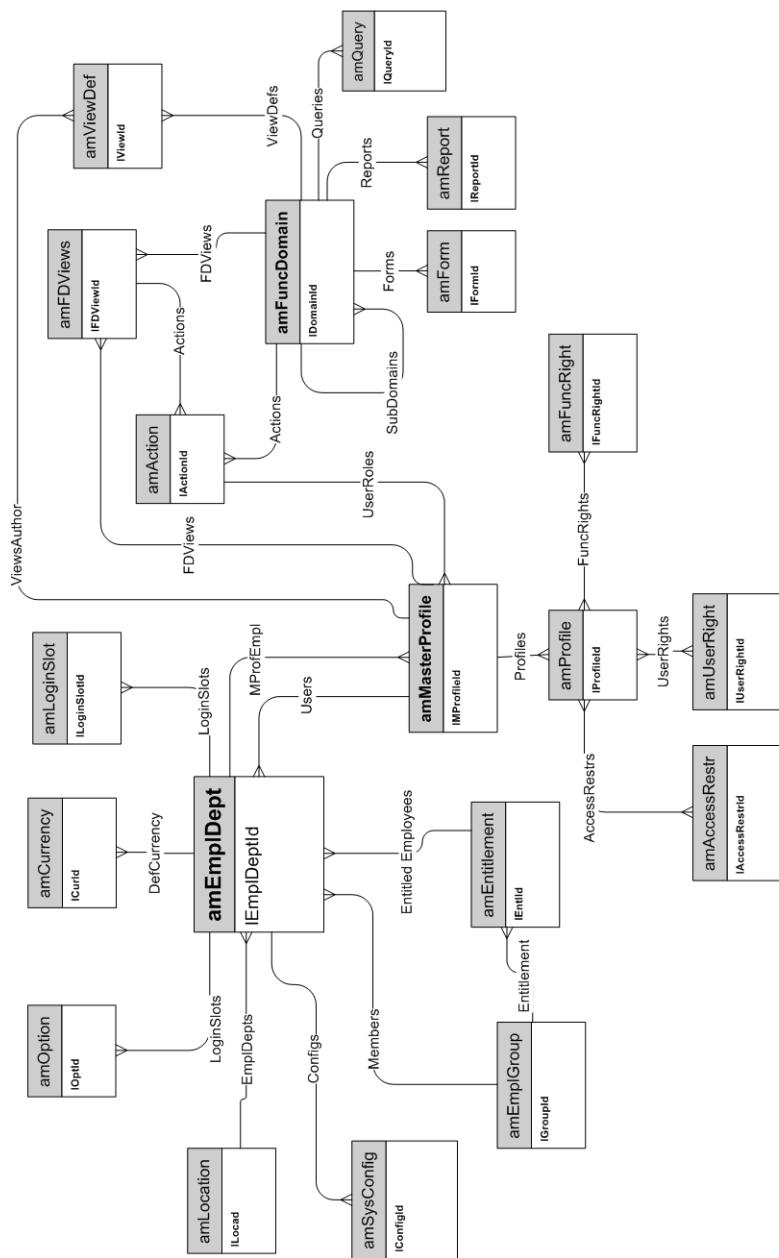


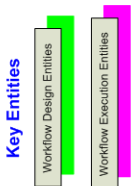
6 Administration

This chapter presents the diagram of the following physical data model:

- [Access to the database](#) [page 50]
- [Workflows](#) [page 51]

Access to the database



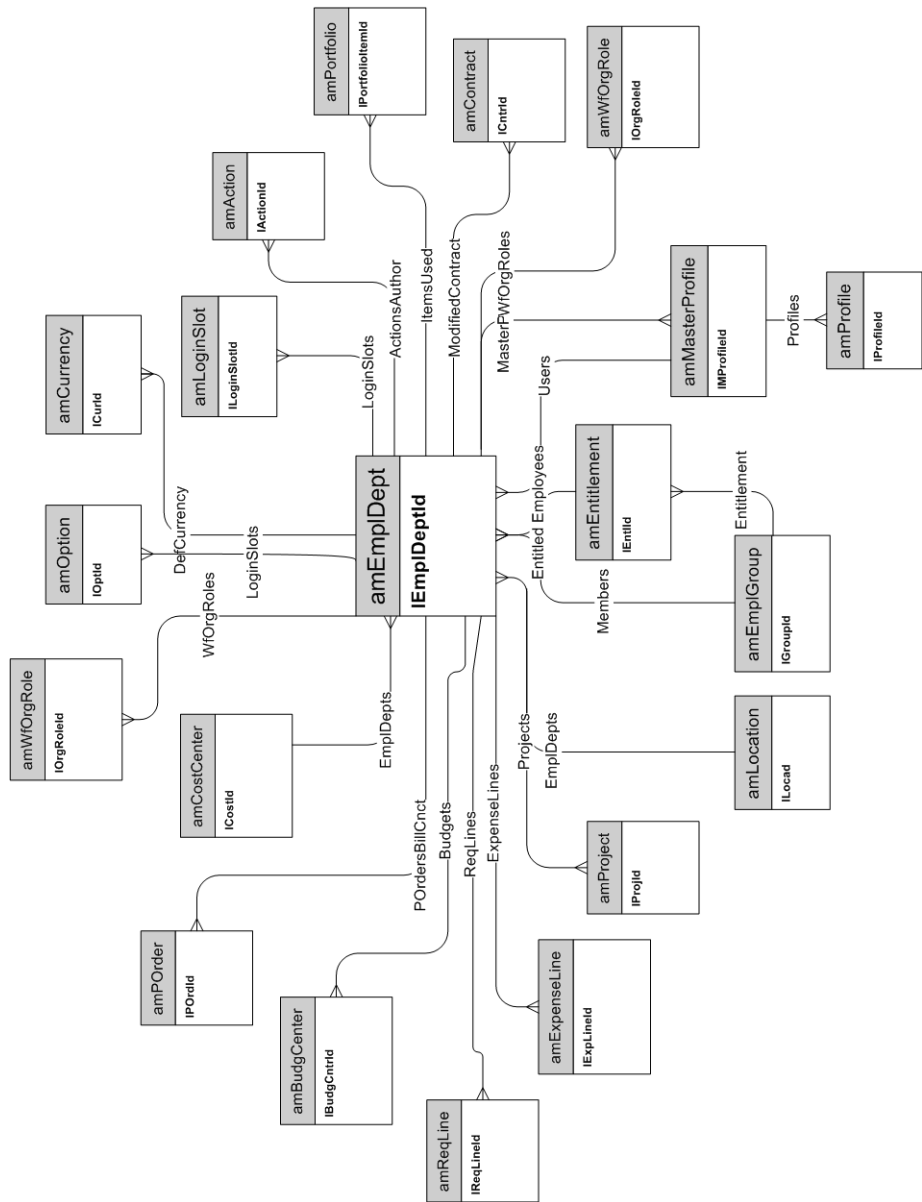


7 Organization

This chapter presents the diagram of the following physical data model:

- ◆ [Employees and Departments](#) [page 54]

Employees and Departments



8 Catalog

This chapter presents the diagram of the following physical data model:

- ◆ [Catalog](#) [page 56]

Catalog

