

HP OpenView OS/390 Management Release Notes

HP OpenView



i n v e n t

Manufacturing Part Number: B9122-90008

Version A.05.00

December 2003



* B 9 1 2 2 - 9 0 0 0 8 *

Legal Notices

The information in this document is subject to change without notice.

Hewlett-Packard makes no warranty of any kind with regard to this manual, including, but not limited to, the implied warranties of merchantability and fitness for a particular purpose. Hewlett-Packard shall not be held liable for errors contained herein or direct, indirect, special, incidental or consequential damages in connection with the furnishing, performance, or use of this material.

Warranty. A copy of the specific warranty terms applicable to your Hewlett-Packard product and replacement parts can be obtained from your local Sales and Service Office.

Restricted Rights Legend. All rights are reserved. No part of this document may be copied, reproduced, or translated to another language without the prior written consent of Hewlett-Packard Company. The information contained in this material is subject to change without notice.

Use, duplication or disclosure by the U.S. Government is subject to restrictions as set forth in subparagraph (c) (1) (ii) of the Rights in Technical Data and Computer Software clause at DFARS 252.227-7013 for DOD agencies, and subparagraphs (c) (1) and (c) (2) of the Commercial Computer Software Restricted Rights clause at FAR 52.227-19 for other agencies.

HEWLETT-PACKARD COMPANY
United States of America

Use of this manual and flexible disk(s) or tape cartridge(s) supplied for this pack is restricted to this product only. Additional copies of the programs maybe made for security and back-up purposes only. Resale of the programs in their present form or with alterations, is expressly prohibited.

Copyright Notices. Copyright 2003 Hewlett-Packard Development Company, L.P.

Reproduction, adaptation, or translation of this material without prior written permission is prohibited, except as allowed under the copyright laws.

Trademark Notices

HP-UX Release 11.00 and later (in both 32 and 64-bit configurations) on all HP 9000 computers are Open Group UNIX 95 branded products.

MVS, OS/390, z/OS, and VTAM are products of International Business Machines Corporation.

NetView/390 is a product of Tivoli Corporation.

OpenView® is a registered U.S. trademark of Hewlett-Packard Company.

SOLVE:NETMASTER is a product of Computer Associates International, Inc.

UNIX® is a registered trademark of the Open Group.

All other product names are the property of their respective trademark or service mark holders and are hereby acknowledged.

Announcement

The following information is for version A.05.00 HP OpenView OS/390 Management.

HP OpenView OS/390 Management allows you to integrate mainframe systems into the HP OpenView Operations for Unix environment. As a component of the HP OpenView solution, HP OpenView OS/390 Management extends management of the IT environment to OS/390 domains and enables true end-to-end management.

HP OpenView OS/390 Management coexists with existing OS/390 management solutions to increase flexibility in managing OS/390 environments. More than just discovering OS/390 network topology and its resources, HP OpenView OS/390 Management also monitors the status and health of the OS/390 system and its standard applications. Collection sources span MVS, CICS, DB2, WebSphere and VTAM messages SNA alerts, performance metrics and many more.

What's in This Version

HP OpenView OS/390 Management (OV OS/390) is closely integrated into the OpenView Operations (OVO) management system. Intelligent agents monitor the System/390 mainframe environment for important events and critical situations. These event and situation messages are communicated to the OVO management server through TCP/IP.

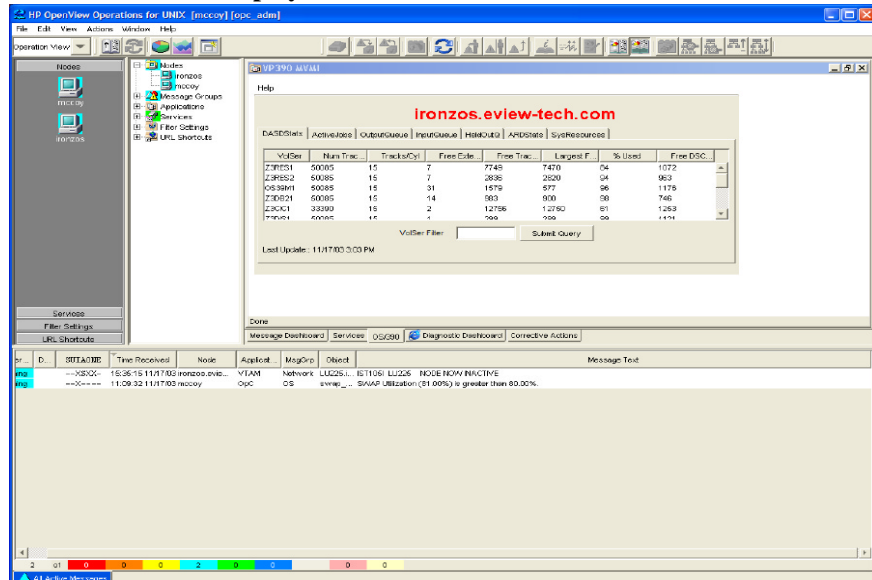
On the OVO management server, OV OS/390 exploits the facilities of OVO including message and monitor templates, applications, and a graphical presentation of the SNA network.

OV OS/390 Version A.05.00 has the following additional features:

- **DASD Monitoring** – This release provides the capability for monitoring and collecting statistics for online Direct Access Storage Devices (DASD). The available information includes device utilization, available free space, and largest free extent. Default templates included in this release provide for interval monitoring of DASD utilization and collecting and storing DASD information in either the CODA performance data store or the OpenView Performance agent log files if available.
- **Performance Data Collection** – An optional feature in this release provides the capability to configure the OV OS/390 agent to send a subset of RMF performance metrics to the OV OS/390 server processes for storing in either the CODA performance data store or the OpenView Performance agent log files if available. Threshold monitoring may be configured using standard monitor templates if data is stored by CODA, or using the OV Performance agent alarm generator feature.
- **Mainframe Visual Management Interface (MVMI)** – a new Java interface is available for use within the OVO Java Management console. The MVMI is designed to run within a OVO Java console workspace as a Java applet. This interface provides the operator with the capability to view and change job status from the OVO Java console. Currently the operator can view information on online DASD volumes, active jobs, JES2 input, output and held queue information, address space performance and system performance statistics. This interface provides the operator the ability to manipulate active jobs and jobs in the various JES2 queues.

Figure 1-1

OV OS/390 MVMI Display



- WebSphere Application Server Monitoring – Included in this release are additions to the default templates for monitoring critical WebSphere messages and processes.
- Mainframe service mapping – a default XML service mapping file is available for customizing the Service Navigator service maps to include mainframe component services. The default mainframe message templates have been updated in this release to map messages to the service names defined in the example service mapping file.
- Operating System Information Interface (OSINFO) – is a new feature that is used by the Mainframe Visual Management Interface (MVMI) for retrieving operating system information without the need for issuing operating system commands. This provides for a more efficient method of retrieving this data. This interface is also available to the end user through the standard vp390hostcmd interface.

Known Problems and Workarounds

The Add Mainframe Node application will define a new mode but will place it in the “Holding Area” of the Node Bank. To move it to the Node Bank main level, open the “390” Node Group and drag the new node into the Node Bank main window.

The message buffering and logging features on the S/390 agent write messages to a predefined list of datasets. When a dataset is filled OS/390 will generate a D37 abend. This abend can be ignored as the logging and buffering functions will automatically switch to the next dataset in the defined list.

The Mainframe Visual Management Interface (MVMI) Active Job tab only supports the display and changing of performance groups. If the OS/390 or z/OS system is running Workload Manager in goal mode, the display and changing of service classes is not supported at this time. A future update will provide this capability.

Compatibility Information and Installation Requirements

Prior to installing HP OpenView Operations OS/390 Management product the HP OpenView Operations Version 6.0 or Version 7.x must be installed on one of the following supported Unix operating systems:

- HP-UX 11.00 or HP-UX 11.11
- Solaris 7 or Solaris 8; Solaris 9 (NNM6.41 or higher)

HP OpenView Operations OS/390 Management requires approximately 15MB of disk space on the OVO management server and 20 cylinders of 3380 DASD space on the OS/390 system.

It is not required to stop the OVO or OpenView processes to install HP OpenView Operations OS/390 Management.

For detailed installation instructions see the *HP OpenView OS/390 Management Installation Guide*.

Installation on HP-UX systems will require that the CD-ROM be mounted using the `mount` command. After mounting the CD-ROM issue the `swinstall` command as follows.

To install from the command line:

```
swinstall -s /<cdrom-mount-point>/HPUX-11/VP390.A.05.00.depot  
VP390Eng
```

To install using the `swinstall` GUI:

```
swinstall -s  
/<cdrom-mount-point>/HPUX-11/VP390.A.05.00.depot
```

Installation on Solaris systems can only be performed at the command line. Load the CD-ROM, and Solaris volume management will detect the CD-ROM and mount it. Verify the mount point using the `df -k` command (typically will be `/cdrom/cdrom0`). Set the language environment to variable "C". For example, in an sh Unix shell enter:

```
LANG=C  
export LANG
```

HP OpenView OS/390 Management Release Notes Compatibility Information and Installation Requirements

Issue the swinstall command:

```
swinstall -s /cdrom/cdrom0/SOLARIS/VP390.A.05.00.depot  
VP390Eng
```

Patches and Fixes in This Version

Version A.05.00 of OpenView OS/390 Management incorporates all of the patches for Version A.04.00.

Software Availability in Native Languages

Non-English environments are NOT SUPPORTED by HP OpenView OS/390 management.

HP OpenView OS/390 Management Release Notes
Software Availability in Native Languages