

INSTALLATION GUIDE

WinnerRunner

WinRunner

Installation Guide

Version 7.6

WinRunner Installation Guide, Version 7.6

This manual, and the accompanying software and other documentation, is protected by U.S. and international copyright laws, and may be used only in accordance with the accompanying license agreement. Features of the software, and of other products and services of Mercury Interactive Corporation, may be covered by one or more of the following patents: U.S. Patent Nos. 5,701,139; 5,657,438; 5,511,185; 5,870,559; 5,958,008; 5,974,572; 6,138,157; 6,144,962; 6,205,122; 6,237,006; 6,341,310; 6,360,332, 6,449,739; 6,470,383; 6,477,483; 6,549,944; 6,560,564; and 6,564,342. Other patents pending. All rights reserved.

ActiveTest, ActiveTune, Astra, FastTrack, Global SiteReliance, LoadRunner, Mercury, Mercury Interactive, the Mercury Interactive logo, Open Test Architecture, Optane, POPs on Demand, ProTune, QuickTest, RapidTest, SiteReliance, SiteRunner, SiteScope, SiteSeer, TestCenter, TestDirector, TestSuite, Topaz, Topaz AIMS, Topaz Business Process Monitor, Topaz Client Monitor, Topaz Console, Topaz Delta, Topaz Diagnostics, Topaz Global Monitor, Topaz Managed Services, Topaz Open DataSource, Topaz Real User Monitor, Topaz WeatherMap, TurboLoad, Twinlook, Visual Testing, Visual Web Display, WebTest, WebTrace, WinRunner and XRunner are trademarks or registered trademarks of Mercury Interactive Corporation or its wholly owned subsidiary Mercury Interactive (Israel) Ltd. in the United States and/or other countries.

All other company, brand and product names are registered trademarks or trademarks of their respective holders. Mercury Interactive Corporation disclaims any responsibility for specifying which marks are owned by which companies or which organizations.

Mercury Interactive Corporation
1325 Borregas Avenue
Sunnyvale, CA 94089 USA
Tel: (408) 822-5200
Toll Free: (800) TEST-911, (866) TOPAZ-4U
Fax: (408) 822-5300

© 2003 Mercury Interactive Corporation, All rights reserved

If you have any comments or suggestions regarding this document, please send them via e-mail to documentation@merc-int.com.

Table of Contents

Before You Install	1
Registering Your Copy of WinRunner	1
System Requirements	2
Upgrading from a Previous Version	2
Choosing the Installation Type.....	3
Installing WinRunner	5
Running a Standalone or Network Installation	5
Running a Workstation Installation	25
Using a Local Network Drive for Updates.....	28
Setting Up a Silent Installation	31
Working with WinRunner Licenses	36
Understanding Your WinRunner License	38
Installing WinRunner Licenses	39
Requesting a Seat License Code	41
Activating a Seat License Code.....	43
Changing the License Type.....	48
Setting the LSHOST or LSFORCEHOST Variable.....	49
Working with Commuter Licenses	54
Configuring Visual Basic 4.0 and 5.0 Support	65
Configuring Visual Basic 4.0 Support	65
Configuring Visual Basic 5.0 Support	66
Enabling Table Contents Checks for an ActiveX Control	68
Configuring WinRunner to Work with Embedded Browser Controls	70
Adding WinRunner Components	71
Uninstalling WinRunner	74

Before You Install

Welcome to WinRunner, Mercury Interactive's enterprise functional testing tool for Windows 98, Windows NT 4.0, Windows 2000, Windows Me, and Windows XP. This guide describes everything you need to know to install WinRunner on a standalone computer or on a network. It describes the WinRunner package contents, system configuration, registration procedures, how to choose a license type, and how to run the setup program.

Before you begin to install WinRunner, please review the following pre-installation procedures.

Registering Your Copy of WinRunner

Register your copy of WinRunner to become a licensed user with all rights and privileges. Registered users can access technical support and information on all Mercury Interactive products, and are eligible for updates and upgrades.

Note: You can register your copy of WinRunner on Mercury Interactive's Customer Support Web site at <http://support.mercuryinteractive.com>.

If your address changes, notify Mercury Interactive or your local representative, so that you can continue to receive product information and updates.

System Requirements

To successfully run WinRunner, you need the following minimum system requirements:

Platform	An IBM-PC or compatible with a single CPU, Pentium® /100MHz or higher microprocessor.
Memory	A minimum of 32 MB of RAM.
Disk Space	21 MB of free disk space for a compact installation, or 73 MB for a typical or complete installation. You may need an additional 20 to 40 MB on the drive where Windows is installed, depending on the shared components already installed on the machine. (An additional 10 MB of free disk space is required during the installation process for a compact installation, or 54 MB for a typical or complete installation.)
Operating System	Windows® 98, Windows NT® 4.0, Windows® 2000, Windows® Me, or Windows® XP.
Display	Monitor with resolution of 800 x 600 or higher.
Browser	Microsoft Internet Explorer 5.0 to 6.0 (required). For WebTest: Netscape Navigator 4.06 or later (optional), Netscape 6.1, 6.22, or 6.23 (optional), AOL 5.0 or 6.0 (optional).

Upgrading from a Previous Version

You can install a standalone version of WinRunner over a previous version. Note that any changes made to the tests or any other files in the **\lib** directory will be overwritten. However, the existing **\lib** directory will be backed up as **\lib.bak**. Note that if **lib.bak** already exists, the existing **\lib** directory will not be backed up. You should separately save any files you added or changed manually before installing WinRunner 7.6 over a previous WinRunner installation. Configuration changes made in the **wrun.ini** file will not be overwritten when installing WinRunner 7.6.

You cannot install WinRunner over WinRunner 2000 or WinRunner EURO. You must uninstall WinRunner 2000 or WinRunner EURO before installing WinRunner 7.6. For more information, see “Uninstalling WinRunner” on page 74.

To use WinRunner 7.6, you need a seat or concurrent license code. If you already have a license code, but you are upgrading from WinRunner version 7.01 or earlier (or 7.0 or earlier for European customers), you need a new license code. Request your license code from the Mercury Interactive Customer Support Web site at: <http://support.mercuryinteractive.com/license>.

For more information on installing seat licenses, see “Working with WinRunner Licenses” on page 36. For more information on installing concurrent licenses, refer to the *Mercury Functional Testing Concurrent License Server Installation Guide*.

Note: There are documented backward compatibility problems with Microsoft ODBC 4, which is installed by WinRunner, Microsoft Office 2000, and other applications. When any of these programs is installed on a machine where TestDirector 5.0 is installed, TestDirector may behave unexpectedly.

When upgrading to WinRunner 6.0 or later, make sure to upgrade to TestDirector 6.0 or later, or install any software that installs ODBC 4 on another machine.

Choosing the Installation Type

Before you install WinRunner, you need to decide whether to install WinRunner on your computer as a:

- **Standalone installation**—an independent installation. You run the complete setup program and can select the installation options you want for your computer.

Note: You can also record your standalone installation to enable other users to perform a silent installation with an identical configuration. For more information on silent installations, see “Setting Up a Silent Installation,” on page 31.

- **Network installation**—a WinRunner configuration that enables users to run a simplified workstation installation based on the options and components you select during the installation process. Note that, by default, the network installation does not enable you to use WinRunner from the computer on which you install it. If you want to use WinRunner on that computer, select to install a **Network installation and add shortcuts to your Start menu**.
-

Note: You cannot install the Java Add-in on a network installation of WinRunner.

- **Workstation installation**—a simplified installation based on a network installation. When you install a workstation installation, only a few configuration files and shortcut icons are installed on your computer. The WinRunner software is located on the network computer, accessible via the installed shortcuts in your Start menu. When you run WinRunner from your workstation, changes you make in configuration dialog boxes are saved on your computer so that your customization preferences are set automatically each time you run WinRunner from your computer.

For more information on license types and an overview of the procedure for installing each license type, see “Understanding Your WinRunner License” on page 38 and “Installing WinRunner Licenses” on page 39.

Installing WinRunner

Before installing WinRunner, you must know which type of installation you want to run and which type of license you want to install. For more information, see “Understanding Your WinRunner License,” on page 38, and “Choosing the Installation Type,” on page 3.

Important upgrade information: If you are upgrading from WinRunner 7.5 (or from WinRunner 7.01 for European customers), you can continue to use your existing license code. For earlier versions of WinRunner, you must contact Mercury Interactive customer support to receive a new license code as described in “Working with WinRunner Licenses,” on page 36, and in the *Mercury Functional Testing Concurrent License Server Installation Guide*.

This section describes:

- Running a Standalone or Network Installation
- Running a Workstation Installation
- Using a Local Network Drive for Updates
- Setting Up a Silent Installation

Running a Standalone or Network Installation

You use the following procedure to install a WinRunner standalone or network installation.

If you are performing a network installation, follow the procedure below to install WinRunner on the network, and then run the workstation installation on each user workstation as described on page 25.

To run a standalone or network WinRunner installation:

- 1 Insert the CD-ROM into the CD-ROM drive. If the CD-ROM drive is on your local machine, the WinRunner Setup window opens. If you are installing from a network drive, connect to (map) the drive. Double-click **autorun.exe** in the root folder of the CD-ROM. The Setup window opens.



- To view the WinRunner release notes, click **Readme**.
- To browse the folders on the WinRunner Installation CD-ROM, click **Browse**.
- To view an overview of WinRunner, click **Quick Preview**.
- To review the list of new WinRunner features, click **What's New**.

Note: You must be logged on with Administrator privileges to install WinRunner.

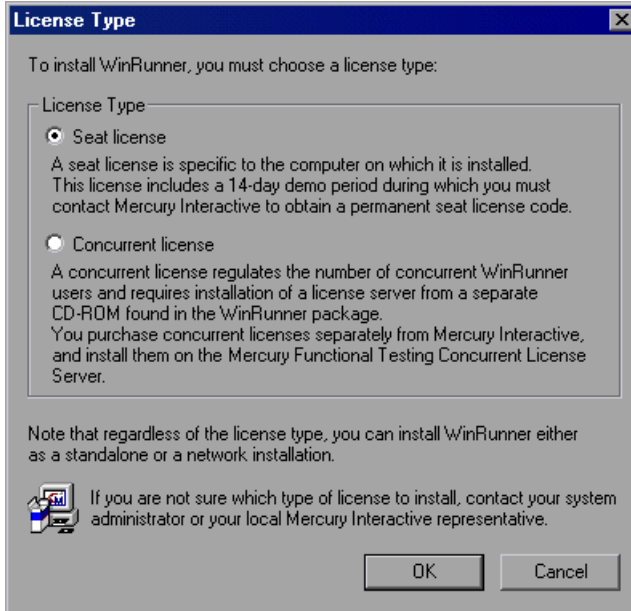
- 2** Click **Install**. The WinRunner Setup splash screen and the Setup progress bar open.

If a previous version of WinRunner is already installed on your computer, the setup program uses the license settings from your current installation. If you want to change the license type, see “Changing the License Type,” on page 48. Proceed to step 4.

- 3** If you are installing WinRunner for the first time, the License Type screen opens.

Note: The license type screen opens only if you run the installation from the **autorun.exe**. It does not open when running the installation from **setup.exe**.

Choose a license type.

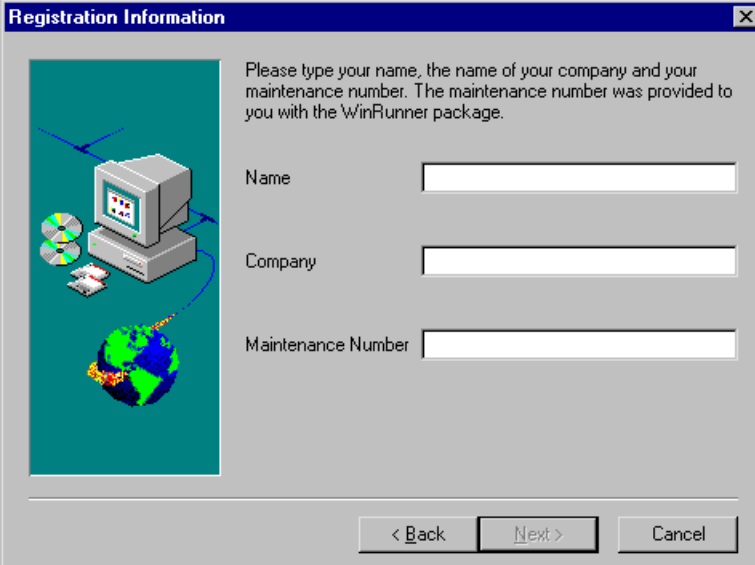


- **Seat license:** A license that is specific to the machine on which it is installed. This license includes a 14-day period during which you must contact Mercury Interactive to obtain a permanent seat license.
- **Concurrent license:** A license server on the network regulates the number of concurrent WinRunner users. Each license entitles the organization to one additional concurrent user.

Note: Before you install WinRunner with a concurrent license, you, or the system administrator, must install a license server on the network from the Mercury Functional Testing Concurrent License Server CD-ROM in the WinRunner package. The concurrent license is purchased separately from Mercury Interactive and installed on the network license server. For information on installing a concurrent license server on the network, refer to the *Mercury Functional Testing Concurrent License Server Installation Guide*.

For more information on license types, see “Understanding Your WinRunner License” on page 38. If you are not sure which type of license to install, contact your system administrator or your local Mercury Interactive representative.

- 4 The Software License Agreement screen opens. To install WinRunner, you must accept the terms of the license agreement by clicking **Yes**. If you click **No**, the setup program will close.
- 5 In the Registration Information screen, type your name, the name of your company, and a WinRunner maintenance number. This number can be found in the Maintenance Pack Number envelope or on the bill of lading you received when you purchased WinRunner.



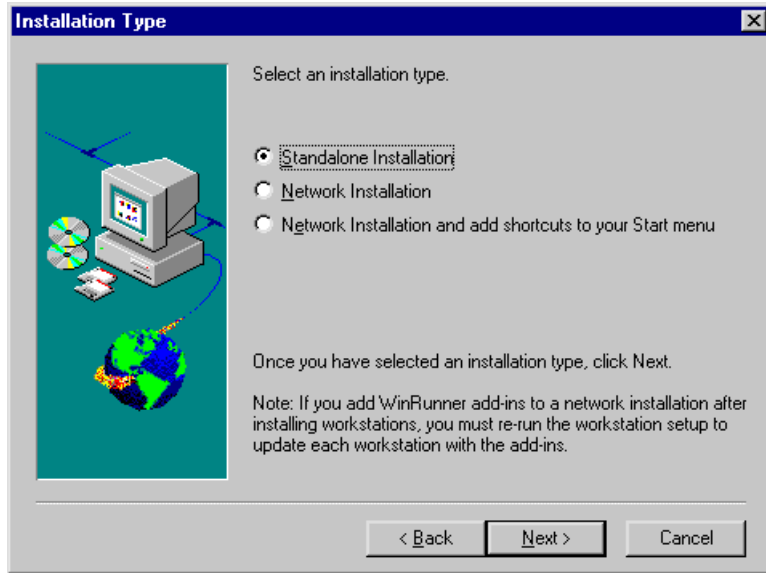
The image shows a Windows-style dialog box titled "Registration Information". The dialog has a blue title bar with a close button (X) in the top right corner. The main area is light gray and contains a teal-colored graphic on the left side. The graphic depicts a computer monitor, a tower PC, two CD-ROMs, and a globe with a satellite dish, all connected by blue lines. To the right of the graphic, there is a text prompt: "Please type your name, the name of your company and your maintenance number. The maintenance number was provided to you with the WinRunner package." Below this text are three input fields: "Name", "Company", and "Maintenance Number". At the bottom of the dialog, there are three buttons: "< Back", "Next >", and "Cancel".

The maintenance number replaces what was formerly a serial number for each purchased copy of WinRunner. Note that there is a single maintenance number for each team of users.

The maintenance number, which identifies the customer, determines what components your license supports and how many licenses are generated for a concurrent license.

Click **Next**.

- 6 Click **Yes** in the Registration Confirmation screen to confirm the registration information.
- 7 The Installation Type screen opens.



Select one of the following:

- ▶ **Standalone Installation:** Installs WinRunner on a hard disk of your local computer.
- ▶ **Network Installation:** Installs WinRunner files that enable other users to run a simplified workstation installation and to run WinRunner on their computer using the software installed on your network computer.
- ▶ **Network Installation and add shortcuts to your Start menu:** Installs a network installation as described above and adds workstation shortcuts to your Start menu so that you can run WinRunner from the computer on which you installed the Network installation.

Notes:

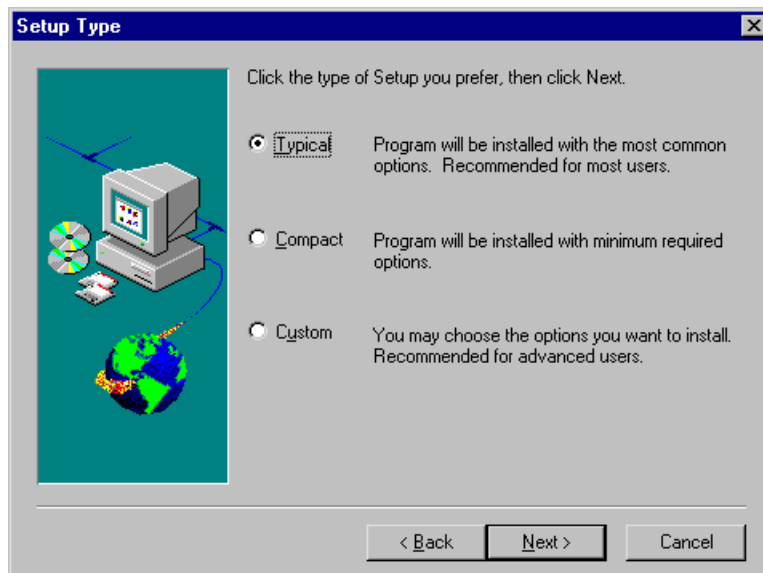
You cannot install a network installation over a previous version of WinRunner. When performing a network installation of WinRunner, either remove installations of previous versions first, or install the network installation in a different location.

You cannot install the Java Add-in on a network installation of WinRunner. If you want to work with the Java Add-in, select **Standalone Installation**.

For more information on installation types, see “Choosing the Installation Type,” on page 3. If you are not sure which type of installation to choose, contact your system administrator.

Click **Next**.

- 8** The Setup Type screen opens. Choose the type of installation: **Typical**, **Compact**, or **Custom**.



A **Typical** installation installs commonly used program files, including online documentation and samples, the Unified Report, WebTest add-in support, and add-in support for PowerBuilder, Visual Basic, and ActiveX. Note that you can choose which add-ins to load at the beginning of each WinRunner session. For additional information on loading add-in support, refer to the *WinRunner User's Guide*.

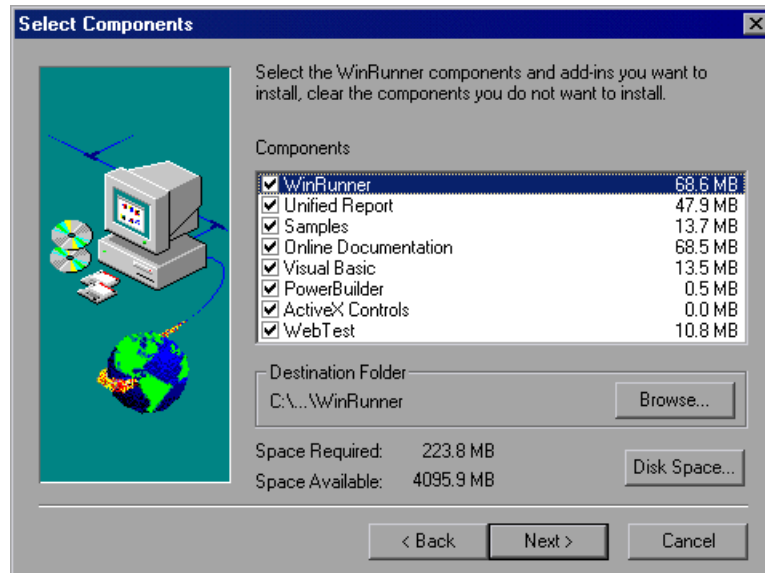
A **Compact** installation installs only the required WinRunner program files, without online documentation, samples, the Unified Report, WebTest add-in support, or add-in support for PowerBuilder, Visual Basic, and ActiveX controls.

A **Custom** installation enables you to select which components to install.

Note: When you install a standalone installation of WinRunner, Microsoft ODBC 4 is installed on your machine.

Click **Next**. If you chose a Typical or Compact installation, proceed to step 10.

- 9 If you chose a Custom installation, the Select Components screen opens. select the components you want to install.



- **WinRunner**—Installs the basic WinRunner program. The WinRunner component must be installed to install any of the other components listed.
- **Unified Report**—Enables you to view WinRunner test results in a QuickTest-style TestFusion report.

Note: If you want to call WinRunner tests from QuickTest Professional 6.5 and view detailed results of the WinRunner events, you must install this component.

- **Samples**—Includes a collection of sample WinRunner tests.
- **Online Documentation**—Contains several help and PDF documents that help you learn and take full advantage of all WinRunner features and capabilities.

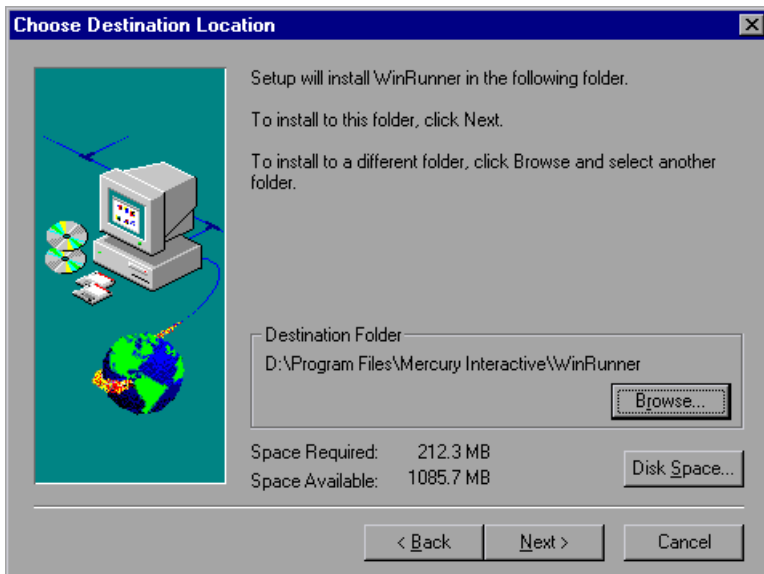
- The following add-ins:
 - **Visual Basic**
 - **PowerBuilder**
 - **ActiveX Controls**
 - **WebTest**

In this screen, you can also specify the **Destination Folder** for the WinRunner installation. You can accept the default location or you can enter or browse to a new folder location.

To check the space available on the specified disk drive, click **Disk Space**.

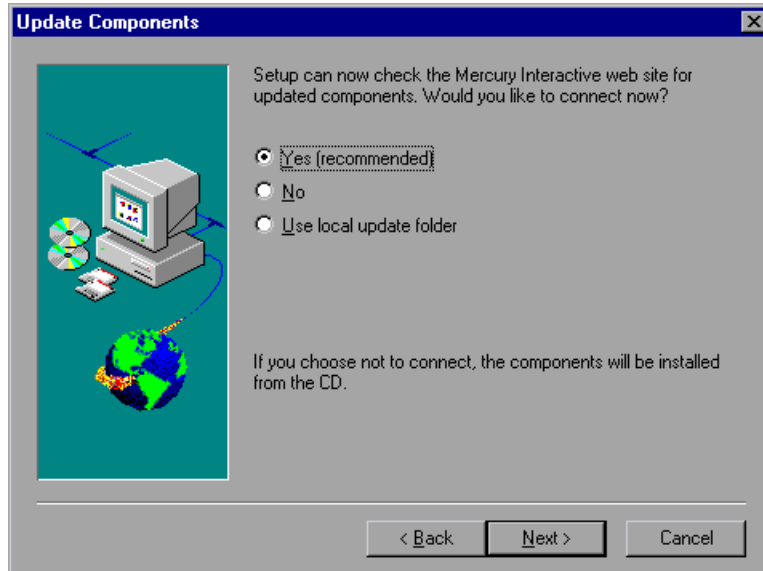
Click **Next** and proceed to step 11.

- 10** If you chose a Typical or Compact installation, the Choose Destination Location screen opens. Specify the destination folder. To check the space available on a disk drive, click **Disk Space**.



Click **Next**.

- 11 The Update Components screen opens. If you have Microsoft Internet Explorer version 3.0 or later installed (or any other software that installs **wininet**), you can check the Mercury Interactive Web site for updated components.



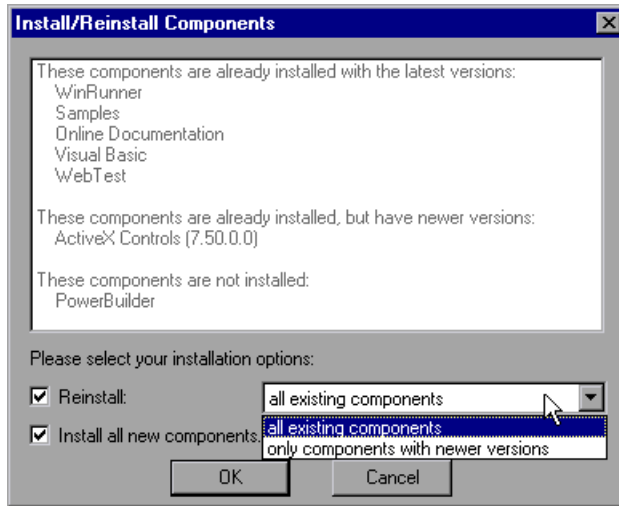
- Click **Yes** to check the Mercury Interactive Web site for updated components.
- Click **No** if you want to install the components from the CD-ROM without checking for updated components.
- Click **Use local update folder** only if you know that updated components have already been downloaded to a folder on your local network. See page 28 for more information on this option.

Click **Next**.

If you chose **Yes** in the Update Components screen, the installation checks the Mercury Interactive Web site for updated components. If there are components on the Web site that are newer than components on the CD-ROM, setup prompts you to overwrite the CD-ROM components with the Web site components. If no newer components are found on the Web site, then setup installs all components from the CD-ROM.

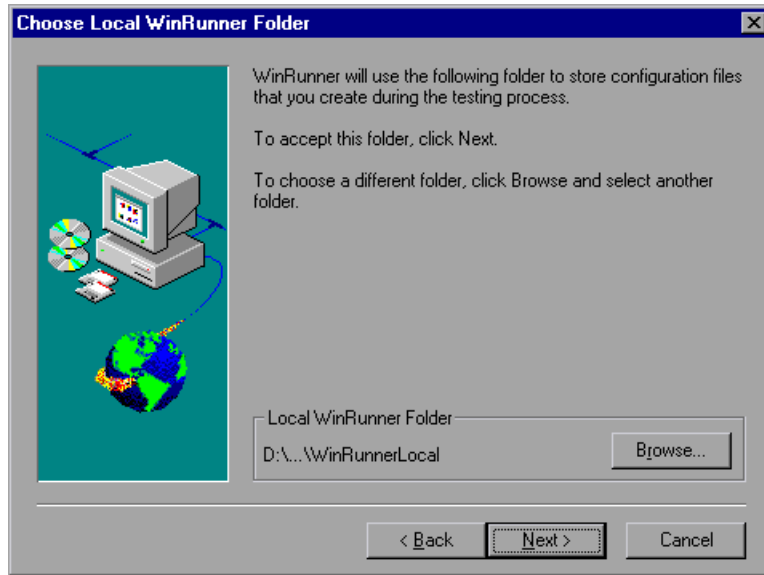
If the installation cannot access the Web site, you can click **Retry** to try to connect to the Web site again. If you click **Cancel**, the setup program installs the WinRunner components from the CD-ROM.

- 12** If you are installing WinRunner over a previous WinRunner installation, the Install/Reinstall Components screen opens.



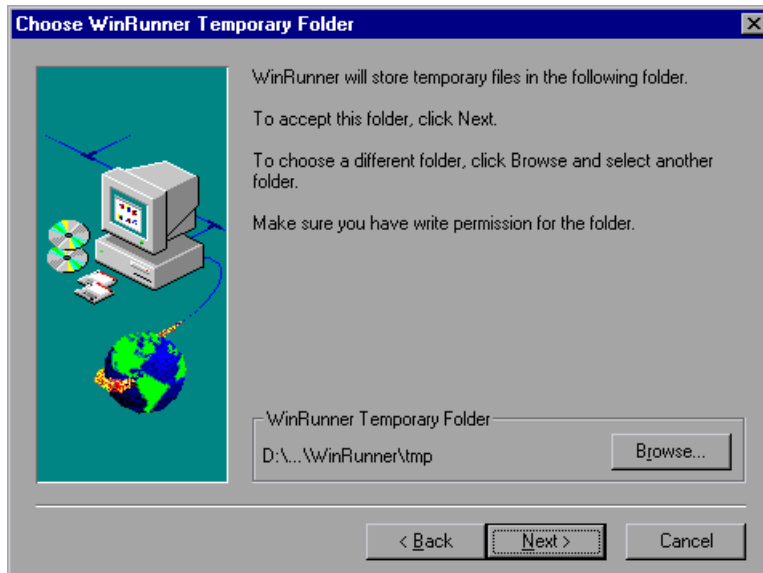
Decide whether to reinstall **all existing components** or **only components with newer versions**, and whether to **Install all new components**.

- 13** If you selected **Network Installation and add shortcuts to your Start menu** in the Setup Type screen in step 8, the Choose Local WinRunner Folder screen opens. Select a location for the local WinRunner folder. This folder enables you to configure WinRunner to meet your specific testing requirements, while running a shared version over the network.



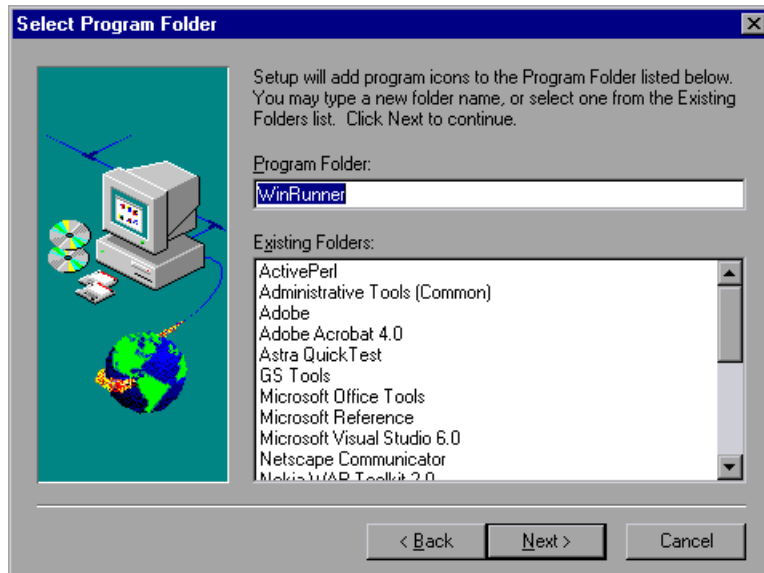
Click **Next**.

- 14** The Choose WinRunner Temporary Folder screen opens. Choose the location of your WinRunner temporary folder.



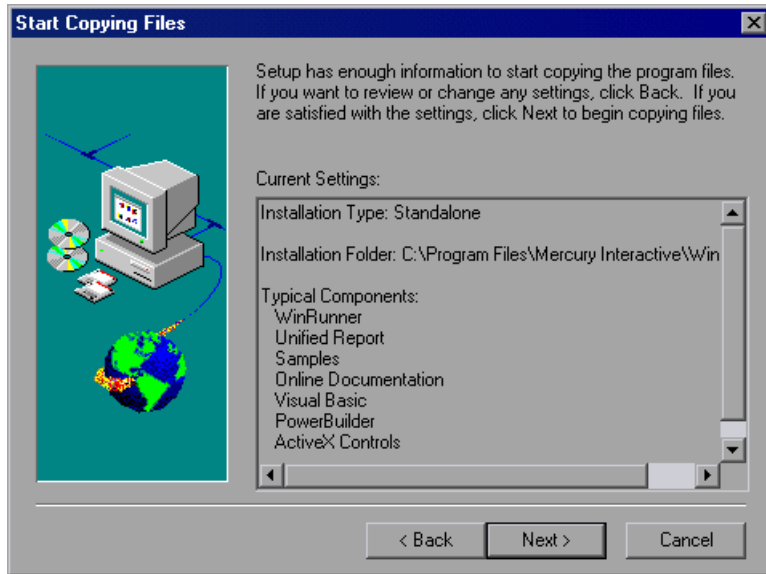
Click **Next**.

- 15** The Select Program Folder screen opens. Select the program folder for the WinRunner icons.



Click **Next**.

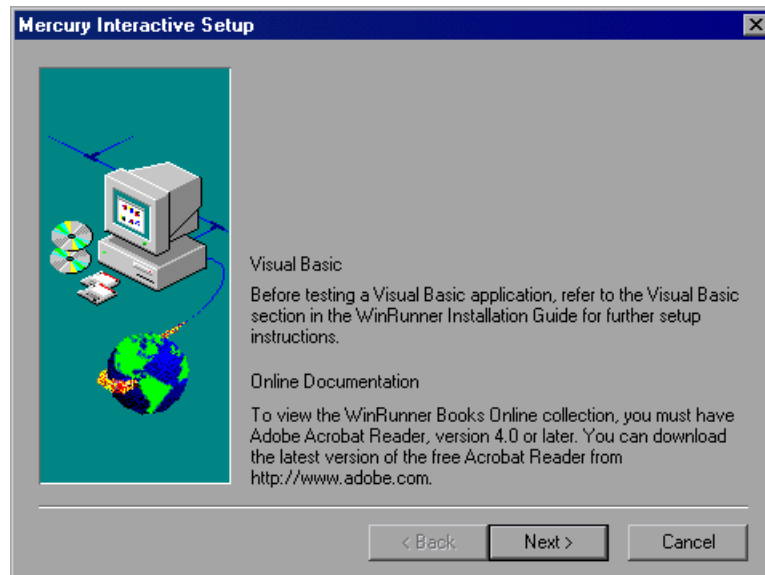
- 16** The Start Copying Files screen opens. The installation settings you selected are displayed in read-only format. Review the settings.



If you want to select different settings, click **Back**. If you are satisfied with the settings, click **Next**.

The installation process begins. To pause or quit the installation process, click **Cancel**.

- 17** If you installed Visual Basic support and/or online documentation, the Mercury Interactive Setup screen opens when the installation process finishes.



Read the information on the screen and click **Next**.

18 The License Information Screen opens. Read about the type of license you installed.

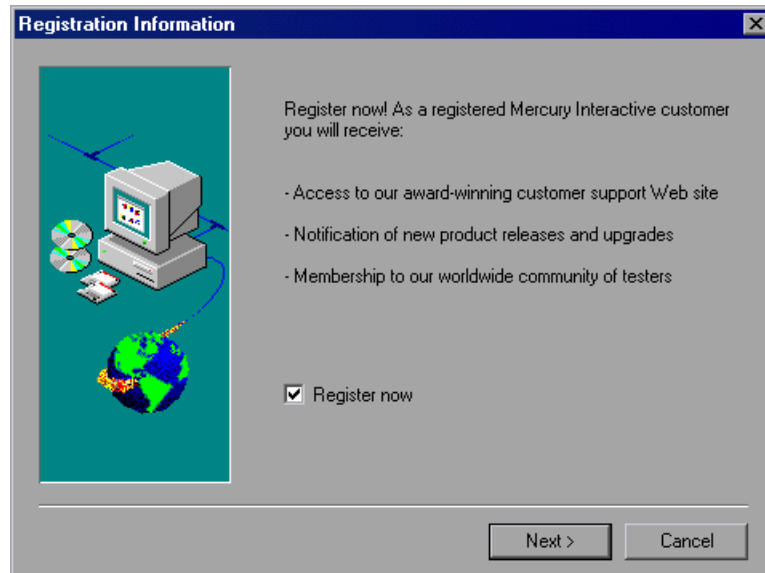
- ▶ **Seat license**—Each WinRunner machine requires its own license. The first time WinRunner is installed on a machine, it includes a 14-day demo license. During this time period you should contact Mercury Interactive to receive a permanent license for your machine. You can install the permanent license when you start WinRunner or from the WinRunner Help menu. For additional information, see “Working with WinRunner Licenses” on page 36.

Note: Do not change the date on a computer running WinRunner with a demo license.

- ▶ **Concurrent license**—A license server on the network regulates the number of concurrent WinRunner users. This enables you to run WinRunner on any machine on your network. It requires installing a concurrent license server and a concurrent license from the Mercury Functional Testing Concurrent License Server CD-ROM in the WinRunner package. For additional information, refer to the *Mercury Functional Testing Concurrent License Server Installation Guide*.

Click **Next**.

- 19** The Registration Information screen opens. Read the information about Mercury Interactive's Customer Support.



If you register, you receive:

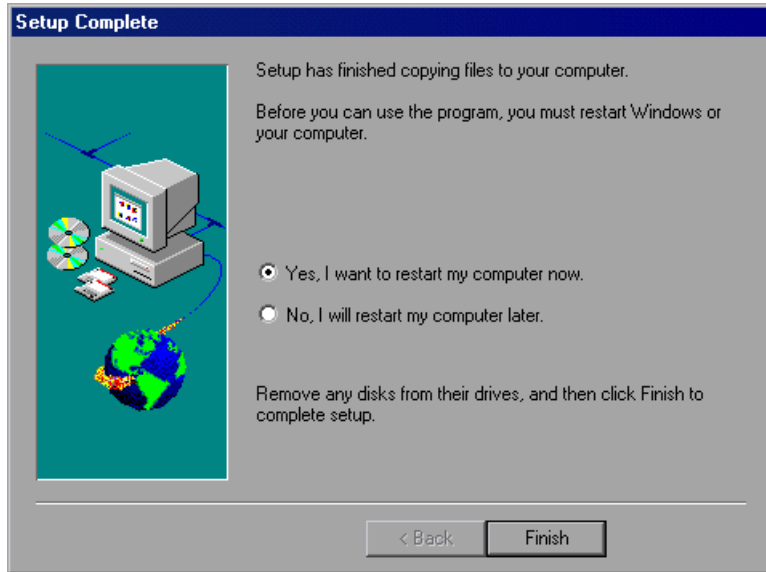
- access to Mercury Interactive's award-winning Customer Support Web site
- notification of new product releases and upgrades
- membership to Mercury Interactive's worldwide community of testers

To register now, confirm that the **Register now** check box is selected. Click **Next**. Your browser opens to Mercury Interactive's Customer Support site (<http://support.mercuryinteractive.com>). Follow the directions on the Customer Support site.

To register at a later time, clear the **Register now** check box and click **Next** to finish your WinRunner installation.

20 The Setup Complete screen prompts you to restart your computer.

Note: It is strongly recommended that you restart your computer as soon as possible. Delaying the system restart could result in unexpected system problems.



Click **Finish** to complete the setup process.

If you installed a network installation of WinRunner, run a workstation installation on all workstations. For more information, see “Running a Workstation Installation,” on page 25.

- ▶ To read the latest release notes, choose **Start > Programs > WinRunner > Read Me**. The Read Me file opens in Microsoft Wordpad.
- ▶ To view the WinRunner online books, you must have Acrobat Reader 4.0 or later installed. To view online books, click **Start > Programs > WinRunner > Documentation > WinRunner Books Online**.
- ▶ To start WinRunner, click **Start > Programs > WinRunner > WinRunner**.



Adding Components to a Network Installation

If you want to enable workstation installations to work with additional WinRunner add-ins, install the add-ins on your network installation before running the workstation installations.

If you install additional components from the WinRunner CD or additional WinRunner add-ins on the network installation after you complete the workstation installations, you must uninstall WinRunner from all workstation installations and then run the workstation installations again to update each workstation with the new set of available add-ins.

Note that if you installed a WinRunner workstation installation on the Network installation computer (by choosing **Network Installation and add shortcuts to your Start menu** during the original installation), you must uninstall and reinstall that workstation installation as well to get the new components or add-ins.

Note: The WinRunner Java-Add-in is not supported for Network and Workstation installations.

For information on installing additional components from the WinRunner CD, see “Adding WinRunner Components,” on page 71. For information on installing add-ins, refer to the Installation Guide for your WinRunner add-in.

Running a Workstation Installation

A workstation installation should be performed for each user running WinRunner from the network. This installation can be performed only after the network installation is successfully completed, including all add-in installations. For more information, see “Running a Standalone or Network Installation” on page 5 and “Adding Components to a Network Installation” above.

- 1 Map to the network drive where the network installation is installed.

2 Click **Start > Run**.

3 Type <network installation_folder>\setup\setup.exe and click **OK**.

The WinRunner setup program starts. The WinRunner Setup splash screen and the Setup progress bar open.

4 The software license agreement appears. To install WinRunner, you must accept the terms of the license agreement by clicking **Yes**. If you click **No**, the setup program will close.

5 In the Registration Information dialog box, type your name and click **Next**.

6 In the Registration Confirmation screen, click **Yes** to confirm the registration information.

7 Confirm the Workstation Installation message and click **Next**.

8 Define the location for the local WinRunner folder.

The WinRunner folder on your hard drive is used to store configuration files you create during the testing process. Configuration files in this folder override configuration files of the same name on the network, so that you can configure WinRunner to your specific testing requirements.

Click **Next**.

9 Select the location of your WinRunner temporary folder.

Setup updates and installs system files.

Click **Next**.

10 Select the program folder for the WinRunner icons.

Click **Next**.

11 Restart your computer. The WinRunner program folder is added to your Start menu.

Notes:

If you try to start WinRunner before restarting your computer, WinRunner will not run properly.

After restarting your computer, you must log in (for the first time) with the same login name that was used when installing WinRunner.

- ▶ To read WinRunner release notes, click **Start > Programs > WinRunner > Read Me**. The Read Me file opens in Microsoft Wordpad.
- ▶ To view the WinRunner online books, you must have Acrobat Reader 4.0 or later installed. To view online books, click **Start > Programs > WinRunner > Documentation > WinRunner Books Online**.
- ▶ To start WinRunner, click **Start > Programs > WinRunner > WinRunner**.



Note: You do not install WinRunner add-ins on a workstation installation. When you install the workstation installation, all add-ins that are already installed on the network installation are automatically made available to the workstation installation.

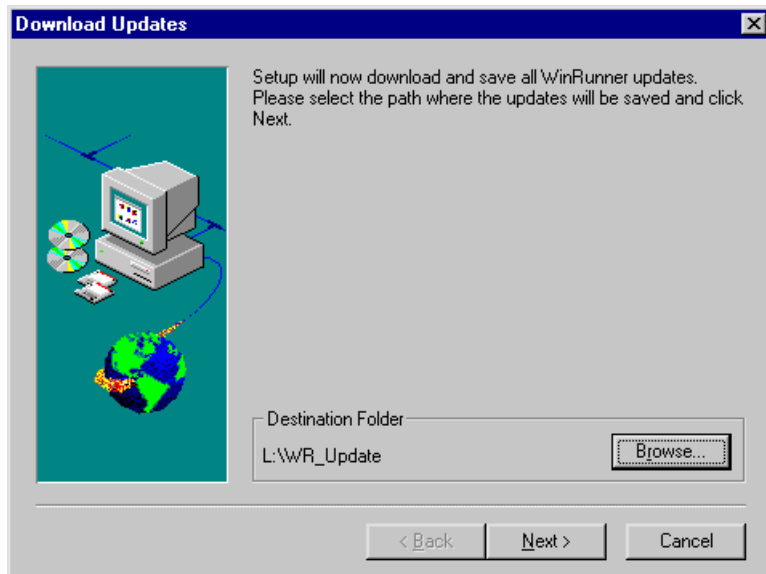
If additional components from the WinRunner CD or additional WinRunner add-ins are installed on the network installation after you complete the workstation installation, you must uninstall your current workstation installation and then run the workstation installation again to update your workstation with the new components or new set of available add-ins.

Using a Local Network Drive for Updates

You can download WinRunner installation updates from the Mercury Interactive Web site to a network drive and then access the local network drive for all WinRunner installations in your organization.

To download updates to a local network drive:

- 1** Insert the CD-ROM into the CD drive and run <CD drive>\update.exe.
- 2** The Download Updates screen opens.



Choose the local network drive for the WinRunner update files. Click **Next**.

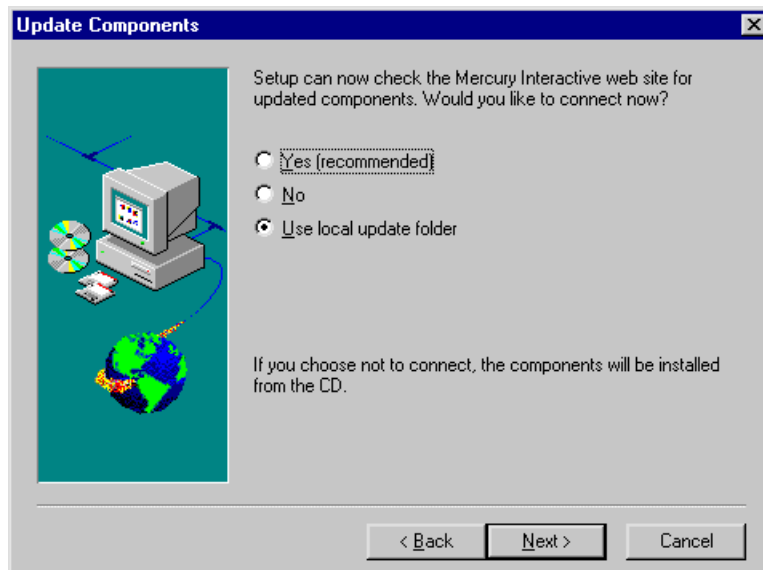
- 3** Setup begins to download the files. When the download is complete, the Updates Download Complete screen opens. Click **Finish**.

Note: When you run **update.exe**, the program downloads all posted updates, regardless of their content and versions. When installing updates from a local network drive during the WinRunner installation, however, the setup program downloads in the same way as it downloads from the Web site. It installs only those components that are part of the current installation and are newer than the components on the CD-ROM.

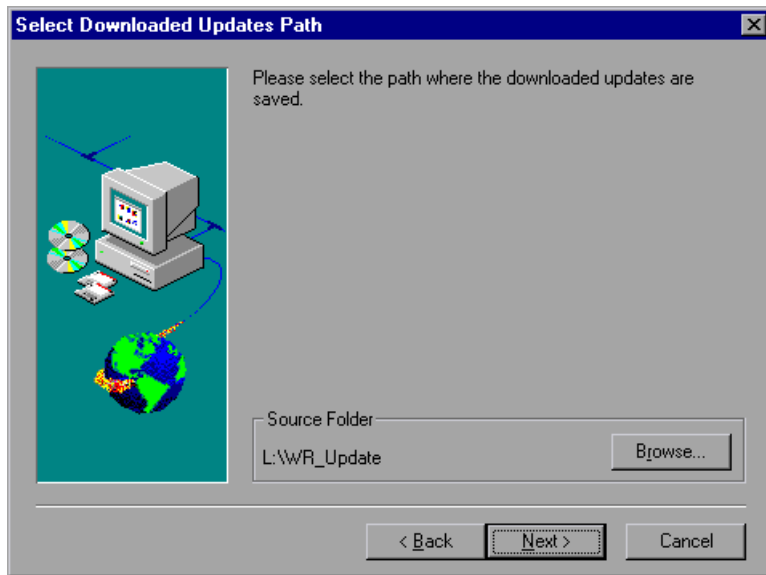
Once the updates have been downloaded to a local network drive, you can link to that drive from the WinRunner installation to download the updates locally.

To download updates from a local network drive during a WinRunner installation:

- 1 When the Update Components screen of the WinRunner installation opens, select **Use local update folder**.



2 The Select Downloaded Updates Path screen opens.



Use the **Browse** button to select the path where the updates are stored. Click **Next**. The installation program checks the specified network folder for updated components. If there are components in the update folder that are newer than the components on the CD-ROM, setup prompts you to overwrite the CD-ROM components with the update folder components. When the check is complete, the installation program continues as described in step 13 on page 17.

Setting Up a Silent Installation

You can run the WinRunner setup application silently on your computer. This means that the entire setup process runs in the background without requiring you to navigate through the setup screens. Before you run a silent installation, you (or the system administrator) must record the installation preferences of a standalone WinRunner installation on a computer with an identical computer configuration. Your silent installation will install an exact copy of the recorded configuration.

Recording a Standalone Installation

You record your standalone installation on a computer with a configuration that is identical to the computer(s) that will later run the silent installation including:

- identical operating systems
- same drive letter for installation files
- neither computer should have WinRunner installed prior to running the silent installation

Note: If either computer already has WinRunner installed, you should uninstall WinRunner before beginning the silent installation process to ensure that both computers have identical configurations.

If you want to download installation updates from the Web, you should follow the instructions in “Using a Local Network Drive for Updates” on page 28 before recording your standalone installation.

To record a standalone installation:

- 1** Copy the contents of the WinRunner installation CD to a shared folder on a network computer (<Shared_CD_Fldr>).
- 2** Choose **Start > Run** from the computer on which you want to record the installation (the recording computer) and enter the command line to begin the installation:

- ▶ If you are installing WinRunner with a seat license, enter:
<Shared_CD_Fldr>\setup\setup.exe -r.
 - ▶ If you are installing WinRunner with a concurrent license, enter:
<Shared_CD_Fldr>\setup\english\setup.exe LICENSE_FLOATING -r
- 3** Click **OK**. The WinRunner installation begins. For information on how to install WinRunner, see “Running a Standalone or Network Installation” on page 5. While recording your installation, consider the following:
- ▶ In the installation type screen, select **Standalone Installation**.
 - ▶ For any screens requiring a destination folder, be sure to choose a drive letter that all silent installation users have mapped correctly on their computer. If the destination folder you choose already exists on your computer, be sure that it exists for all silent installation users. If the folder you choose is a new folder, be sure that it is a new folder for all users.
 - ▶ In the Update Components screen, select **No** or select **Use local update folder** if you already downloaded updated components to a local folder. (If you select **Yes** to connect and download from the Web while recording the installation, the silent installation user will be required to respond to certain dialog boxes and Web pages, so the installation will not be entirely silent.)
 - ▶ In the Customer Registration screen, clear the **Register now** check box. Register at the Mercury Interactive Customer Support Web site at another time. (If you select the **Register now** check box, the silent installation user will be required to respond to certain dialog boxes and Web pages, so the installation will not be entirely silent.)
 - ▶ In the Setup Complete screen, it is recommended to select **Yes, I want to restart my computer now** to assure that the silent installation will conclude with a restart on users’ computers to properly complete the installation process.
- 4** After restarting your computer, copy the **setup.iss** file from the Windows folder of the recording computer to <Shared_CD_Fldr>\setup\english.

Running a Silent Installation

You can run a silent installation of WinRunner based on a recorded standalone installation. This enables you to install WinRunner on your computer with the identical installation options and components as the recorded installation without having to navigate through the installation screens.

To run a silent installation:

- 1 It is recommended to save any open files and close all open applications before running the silent installation.

Important Note: Your computer automatically shuts down and restarts at the end of the silent installation if the recorded installation includes the **Yes, I want to restart my computer now** option at the end of the installation process as recommended.

- 2 Choose **Start > Run** on the computer on which you want to install WinRunner silently and enter the silent installation command line:
 - ▶ For seat licenses, enter:
<Shared_CD_Fldr>\setup\setup.exe -s.
 - ▶ For concurrent licenses, enter:
<Shared_CD_Fldr>\setup\english\setup.exe LICENSE_FLOATING -s
- 3 Click **OK**. The installation begins to run in the background. The installation will take several minutes. During the installation, the following message is displayed:



- 4 When the silent installation is complete, the message box closes.

If the recorded installation applies the **Yes, I want to restart my computer now** option at the end of the installation process (recommended), then your computer automatically restarts when the silent installation is complete.

If the recorded installation applies the **No, I will restart my computer later** option at the end of the installation process, then the WinRunner program group window opens displaying the WinRunner program icons when the silent installation is complete.

Note: If the WinRunner program group window opens, then you must restart your computer manually before using WinRunner. If you try to start WinRunner before restarting your computer, WinRunner will not run properly.

If the silent installation message closes, but your computer does not restart and the WinRunner program group does not open, then your silent installation was not successful. For more information, contact your system administrator or see “Troubleshooting Silent Installation Problems” below.

Troubleshooting Silent Installation Problems

The silent installation option requires that the computer on which the installation is recorded and all computers running the silent installation have identical configurations. If one or more of the configuration elements differ, the silent installation stops running without completing the installation process.

If a silent installation fails, check the following:

- ▶ **Did the recording computer or the silent installation computer have WinRunner installed prior to the installation?**

If the recording computer and the silent installation computer have different configurations of WinRunner, the silent installation fails. In this case, the silent installation in progress message closes almost immediately after it opens.

If either computer already has WinRunner installed, you should uninstall WinRunner before beginning the silent installation process to ensure that both computers have identical configurations.

- **Does the silent installation computer have the same drive letter(s) as those that the recording computer used for destination folders?**

During the silent installation, the setup program attempts to install WinRunner files in the paths selected by the recording computer. If the silent installation computer does not have the same drives available, the silent installation fails.

- **Do the selected destination folders exist on one computer and not on the other?**

When you select a new destination folder, the setup program asks you if you want to create the new folder. When you select an existing folder, the setup program does not create a new folder. If the new folder message is necessary for one computer and not for the other, the silent installation fails.

- **Are both computers running on the same operating system?**

If only one of the computers requires a special step due to the operating system being used, the silent installation fails.

- **Did you select Yes (selected by default) in the Update Components screen or Register now (selected by default) in the Customer Registration screen while recording the installation?**

The installation will require input from the user, and therefore will not be silent, if it requires checking the Web for updated components or registering on the Customer Support Web site.

When you record the installation, it is recommended to select **No** or **Use local update folder** in the Update Components screen and to clear the **Register now** check box in the Customer Registration screen.

- **Did you restart the silent installation computer before running WinRunner?**

If the silent installation computer did not restart automatically at the end of the installation process, or if the user did not restart the computer manually prior to running WinRunner, WinRunner will not run properly.

If you have checked all of the issues described in this troubleshooting section and you are still unable to perform the silent installation successfully, contact Mercury Interactive Customer Support.

Working with WinRunner Licenses

You can install WinRunner with a seat license or a concurrent license.

When you install WinRunner with a seat license for the first time on a machine, it includes an automatic 14-day demo license. During this time period, you must contact Mercury Interactive's Customer Support Organization to obtain a permanent license for your computer.

Note: You cannot use a demo license on a computer that has WinRunner or QuickTest installed using a concurrent license.

When you start WinRunner for the first time after installing a seat license, you receive a warning that the demo license will expire within 14 days. Until you install a permanent license, each time you start WinRunner, you will receive a warning indicating how many days are left before your demo license expires.

You can request and activate a seat license from the Help menu or directly from the warning you receive when starting WinRunner.

Note for previous WinRunner local license users: If you are upgrading from WinRunner 7.5 (or from WinRunner 7.01 for European customers), you can continue to use your existing license code. For earlier versions of WinRunner, you must request a license code from Mercury Interactive Customer Support and activate the license code before starting WinRunner. When a message box is displayed after you try to start WinRunner, click the **Install License** button to continue.

When you install WinRunner with a concurrent license, you do not have a 14-day demo period. Before running WinRunner with a concurrent license, the concurrent license server must be installed and running and the concurrent license code must already be activated. For more information, refer to the *Mercury Functional Testing Concurrent License Server Installation Guide*.

When you start WinRunner after installing a concurrent license, WinRunner automatically finds and connects to the concurrent license server. You usually do not need to do anything on your WinRunner computer to enable the license. If the Mercury Functional Testing Concurrent License Server is installed, but your computer cannot automatically find and connect to it, you may need to set the LSHOST or LSFORCEHOST variable on your computer.

If you are working with a concurrent license, you can take advantage of commuter licenses, which enable you to temporarily use a WinRunner concurrent license on a computer that is not connected to the network.

This section describes:

- Understanding Your WinRunner License
- Installing WinRunner Licenses
- Requesting a Seat License Code
- Activating a Seat License Code
- Changing the License Type
- Setting the LSHOST or LSFORCEHOST Variable
- Working with Commuter Licenses

Understanding Your WinRunner License

To use WinRunner, you must have a valid license. There are two types of licenses: seat (formerly known as local or standalone) and concurrent (formerly known as floating). The table below summarizes the differences between the two license types.

Topic	Seat License	Concurrent License
General description	The license is specific to the machine on which it is installed.	Each license entitles the organization to one additional concurrent user.
Number of installations per license code	Each installation of WinRunner requires a distinct license code.	There is no limit to the number of WinRunner installations on the network, but a special license server regulates the number of computers that can run a copy of WinRunner at any time.
Demo license	The installation includes a 14-day demo license. You must request and activate a license code during the 14 days.	The installation does not include a demo license. You must request and activate the license code on the license server before you can use WinRunner.
Maintenance number	The license code is based partially on the maintenance number. The maintenance number identifies the customer.	The license code is based partially on the maintenance number. The maintenance number identifies the customer and indicates how many concurrent users the license will support.

Topic	Seat License	Concurrent License
Other issues	<p>The license code is based partially on the locking code, which identifies the computer on which the WinRunner program is installed. The supplied license code works only for the computer on which the locking code was generated.</p> <p>Note: A computer with multiple bootable partitions may generate a different locking code for each partition. If a different locking code is generated for a partition, you will need to request a unique license string for it.</p>	<p>Not supported for Unix networks.</p> <p>The license server must have a fixed IP address.</p> <p>It is recommended to use an NT server or a Windows® 2000 operating system for the license server.</p> <p>WinRunner machines must have TCP-IP installed.</p> <p>To use concurrent licenses across networks, UDP port 5093 must be open on the server machine.</p>
Entering license code	<p>When WinRunner opens for the first time after installation, it asks you to enter the license code.</p>	<p>Each time WinRunner opens, it automatically searches the network for the license server. You do not need to enter a license code for your QuickTest client installation.</p>

Note that the license type and installation type are not co-dependent: you can install WinRunner using any installation type, regardless of the license type you choose and vice versa. For more information on installation types, see “Choosing the Installation Type” on page 3.

Installing WinRunner Licenses

The general procedure for installing WinRunner and activating the license differs for seat license installations and concurrent license installations. This section summarizes these procedures for the two license types and directs you to the detailed information for each step.

To install WinRunner with a seat license:

- 1** Run the WinRunner setup program (**autorun.exe**). If you are installing a standalone or network installation for the first time, select **Seat License** in the license type screen. For more information and step-by-step instructions, see “Running a Standalone or Network Installation,” on page 5, or “Running a Workstation Installation,” on page 25.
- 2** Run WinRunner using the 14-day demo license.
- 3** Request your seat license code. For more information, see “Requesting a Seat License Code” on page 41.
- 4** Once you receive the license code from Mercury Interactive, enter the code to activate your license. For more information, see “Activating a Seat License Code” on page 43.
- 5** If you plan to test Visual Basic 4.0 or 5.0 applications, and/or ActiveX table objects, configure your application as described in “Configuring Visual Basic 4.0 and 5.0 Support,” on page 65, and “Enabling Table Contents Checks for an ActiveX Control,” on page 68.

To install WinRunner with a concurrent license:

- 1** Insert the Mercury Functional Testing Concurrent License Server CD-ROM and install the concurrent license server using the on a network computer with a fixed IP address. For more information and step-by-step instructions, refer to the *Mercury Functional Testing Concurrent License Server Installation Guide*.
- 2** Request your concurrent license code. For more information, refer to the *Mercury Functional Testing Concurrent License Server Installation Guide*.
- 3** Once you receive the concurrent license code from Mercury Interactive, enter the code to activate your license on the license server. For more information, refer to the *Mercury Functional Testing Concurrent License Server Installation Guide*.
- 4** Insert the WinRunner CD-ROM and run the WinRunner setup program (**autorun.exe**). If you are installing a standalone or network installation for the first time, select **Concurrent License** in the license type screen. For more information and step-by-step instructions, see “Running a Standalone or Network Installation” on page 5, or “Running a Workstation Installation” on page 25.

- 5 If you plan to test Visual Basic 4.0 or 5.0 applications, and/or ActiveX table objects, configure your application as described in “Configuring Visual Basic 4.0 and 5.0 Support,” on page 65 and “Enabling Table Contents Checks for an ActiveX Control,” on page 68.
- 6 Begin using WinRunner. When WinRunner opens, it will automatically find the license server and connect to it.

Note: For additional information, and answers to common license code questions, see <http://kb-web.mercuryinteractive.com/license.html>.

Requesting a Seat License Code

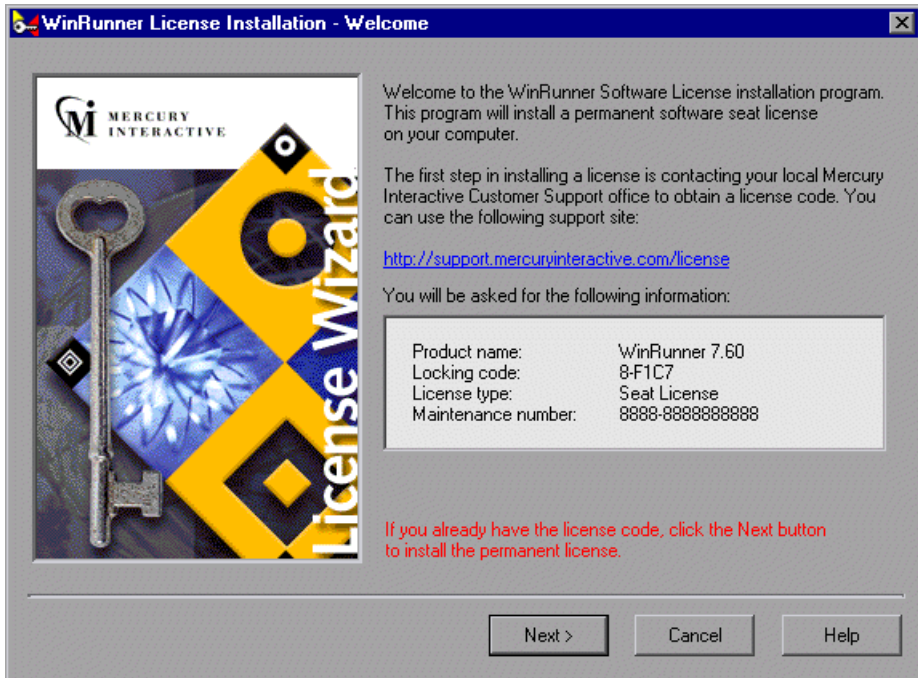
When you install WinRunner with a seat license for the first time, it includes an automatic 14-day demo license. To use WinRunner beyond the 14-day period, you must request and activate a license code for your copy of WinRunner.

To request a seat license:

- 1 Perform one of the following:
 - From the warning message displayed when you start WinRunner, click **Install License**.
 - From within WinRunner, choose **Help > Licence > Install Software License**.

The WinRunner License Installation program starts, and the Welcome screen opens, displaying the locking code for your computer, the license type, and the WinRunner maintenance number that you entered when you installed WinRunner.

Note that there is a single maintenance number for each team of users. (The maintenance number identifies the customer and replaces what was formerly a serial number for each purchased copy of WinRunner.)



- 2 Use the Web site displayed in the screen to send the locking code, license type, and maintenance number to Mercury Interactive Customer Support. Note that you can copy and paste the information from the Welcome screen into the license request form at the Mercury Interactive Customer Support Web site or into an e-mail message.

Note: If you do not have Web access from the computer where you are installing WinRunner, you can send an e-mail containing your computer locking code, the license type, and your maintenance number to Customer Support.

- 3** If you already have your license code, click **Next** to begin the license activation process, and proceed to step 3 of “Activating a Seat License Code” on page 45. Otherwise, click **Cancel** and wait for your license code to arrive. When it arrives, follow the instructions for activating a seat license code as described below.

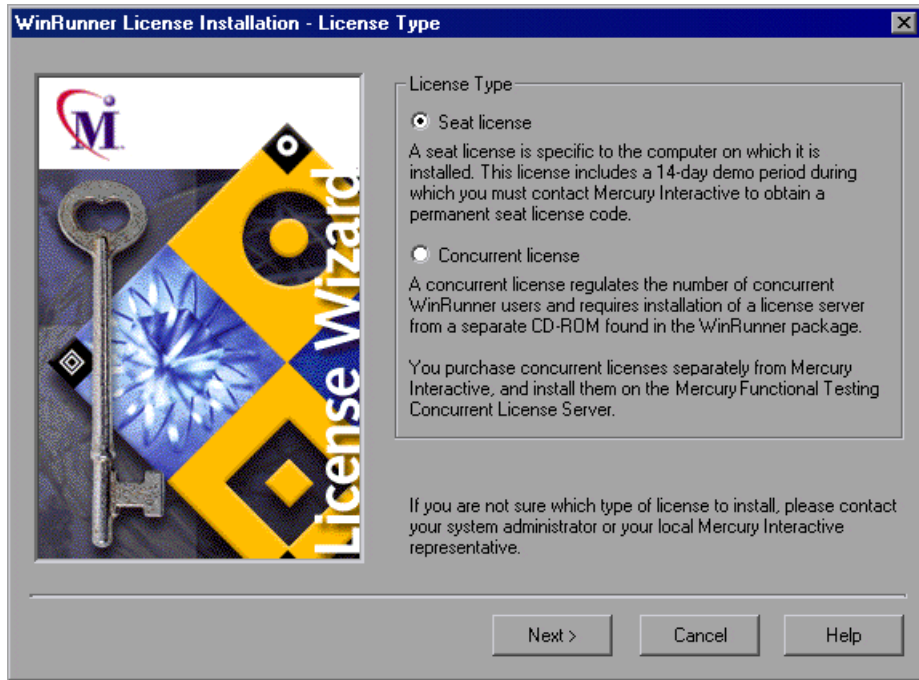
Activating a Seat License Code

Once you receive your license code from Mercury Interactive, you must run the WinRunner License Installation again to activate the code.

To activate your seat license code:

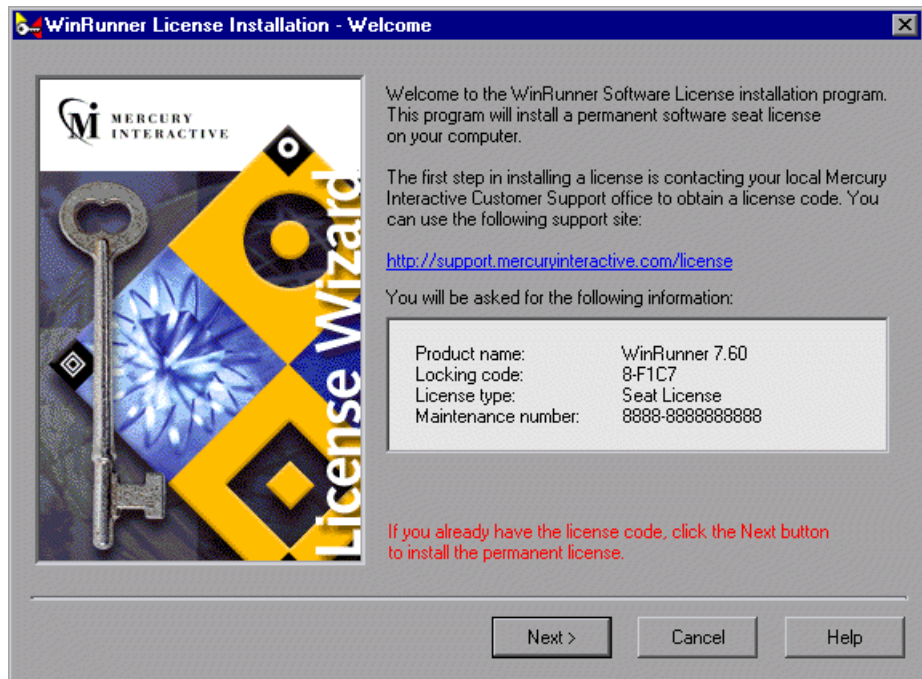
- 1** Perform one of the following:
 - From the warning message displayed when you start WinRunner, click **Install License**.
 - From within WinRunner, choose **Help > License > Install Software License**.

The WinRunner License Installation program starts and the WinRunner License Installation - License Type screen opens.



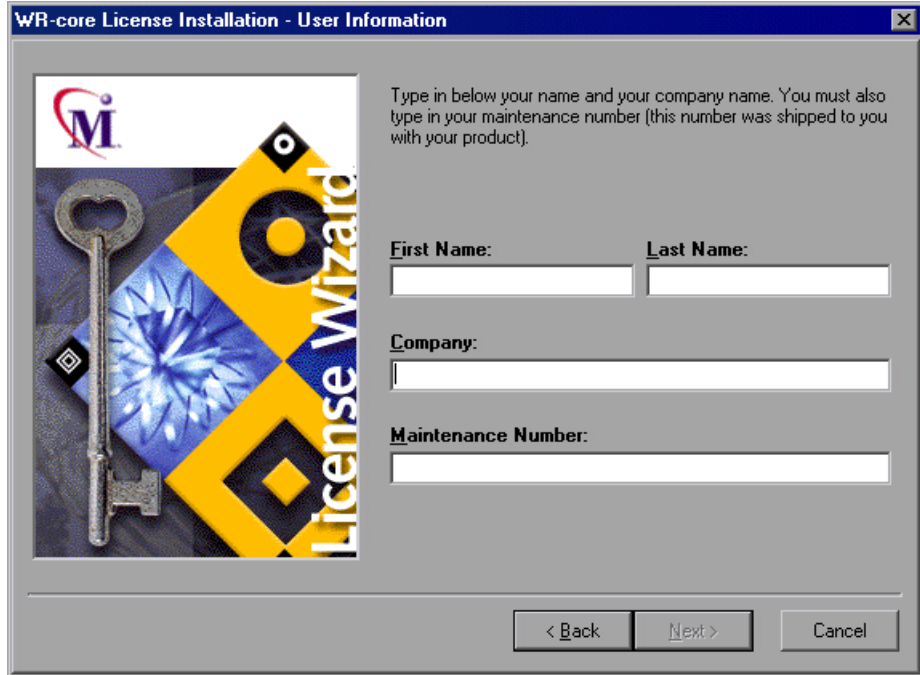
Choose **Seat license** and click **Next**. The Welcome Screen opens.

The Welcome screen displays the locking code for your computer, the license type, and the WinRunner maintenance number that you entered when you installed WinRunner.



- 2 Click **Next** to continue.
- 3 The WR-core License Installation screen opens recommending that you exit all Windows programs. Click **Next**.

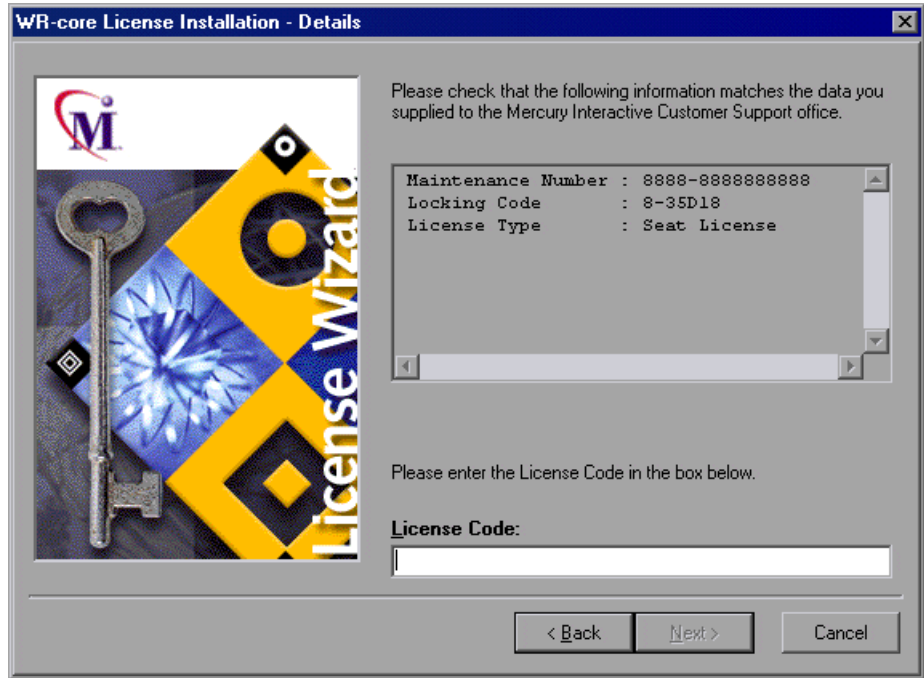
4 The User Information screen opens.



Enter your first name, last name, and company name in the appropriate boxes. In the **Maintenance Number** box, enter your maintenance number, which you received from Mercury Interactive when you purchased WinRunner. This number can be found in the Maintenance Pack Number envelope or on the bill of lading. There is a single maintenance number for each team of users. The maintenance number replaces what was formerly a serial number for each purchased copy of WinRunner. The maintenance number, which identifies the customer, determines the license type.

Click **Next**.

- 5 The Details screen opens. Verify that the information on the WinRunner License Installation screen is correct and insert the license code provided by Mercury Interactive's Customer Support Organization into the **License Code** box.



Note that the license code is valid only for the computer with the locking code that you entered in the license request form. Click **Next**.

- 6 If you entered a valid license code, the Status screen confirms that your license code was successfully installed. Click **Next**.
- 7 The Finished screen opens and displays customer support information. Click **Finish** to complete the license activation process.

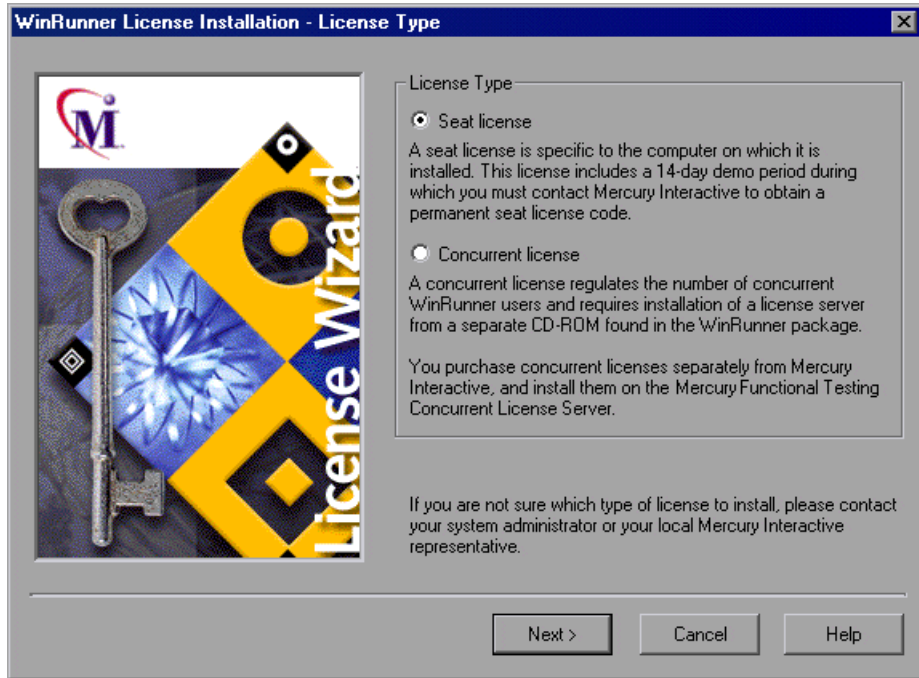
Note: For additional information and answers to common license code questions, see <http://kb-web.mercuryinteractive.com/license.html>.

Changing the License Type

You can change your WinRunner license type from seat to concurrent or from concurrent to seat.

To change your license type:

- 1 In WinRunner, choose **Help > License > Change License Type**. The License Type opens.



- 2 Change your license type and click **Next** or click **Cancel** to continue using the existing license type.

You must restart WinRunner for the change in license type to take effect.

If you change your license type from concurrent to seat, you need to request and activate the seat license code. For more information, see "Requesting a Seat License Code," on page 41 and "Activating a Seat License Code," on page 43.

If you mistakenly changed your license type from seat to concurrent, but there is no concurrent license server installed and running on your network, the next time you start WinRunner, a warning message opens. Click **Install License** in the warning message to change your license type back to seat.

Setting the LSHOST or LSFORCEHOST Variable

You set the LSHOST or LSFORCEHOST variable to enable QuickTest or WinRunner to search for a specific Mercury Functional Testing Concurrent License Server on the network. The LSHOST variable sets the preferred concurrent license server for a QuickTest or WinRunner client. If the specified concurrent license server cannot be found, then a search is conducted on the entire network. The LSFORCEHOST variable restricts QuickTest or WinRunner to a specific concurrent license server.

You may need to set the LSHOST or LSFORCEHOST variable if the Mercury Functional Testing Concurrent License Server is installed on a different domain than the WinRunner client.

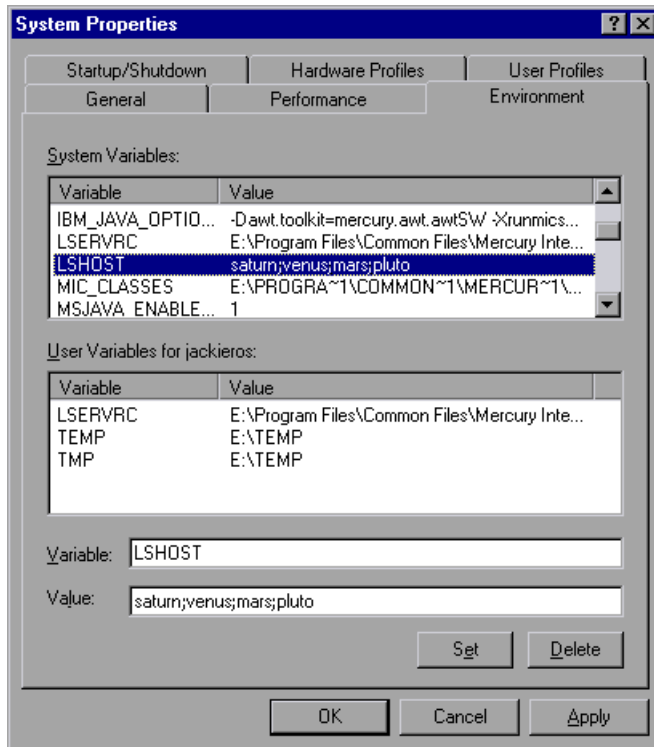
You set these variables differently for different operating systems.

To set the LSHOST or LSFORCEHOST variables if the client computer is running Windows NT:

- 1** Click **Start > Settings > Control Panel**.
- 2** Double-click **System**. The System Properties dialog box opens.
- 3** Click the **Environment** tab.
- 4** Under **System Variables**, select any variable name.
- 5** In the **Variable** box, highlight the selected variable name, and type LSHOST or LSFORCEHOST.
- 6** In the **Value** box, highlight the value name, and type the full name of the license server. Alternatively, you may enter the IP address of the host computer.

Note: For multiple host names (i.e., where there are multiple Mercury Functional Testing Concurrent License Servers running on one network), use a semicolon (;) to separate the hosts' names or IP addresses in the Value box.

7 Click **Set**.



8 In the **User Variables for <user name>** list, select any variable name.

9 Repeat steps 5 - 7.

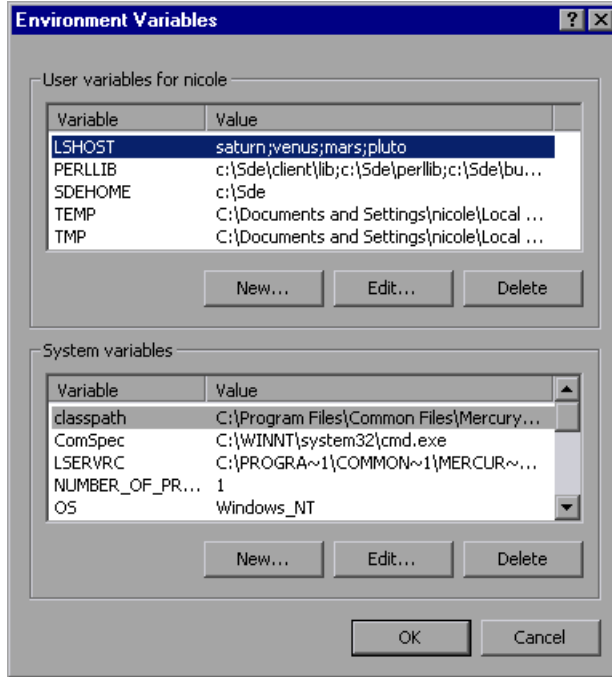
10 Click **OK**.

To set the LSHOST or LSFORCEHOST variables if the client computer is running Windows 2000 or Windows XP:

- 1** Click **Start > Settings > Control Panel**.
- 2** Double-click **System**. The System Properties dialog box opens.
- 3** Click the **Advanced** tab.
- 4** Click the **Environment Variables** button. The Environment Variables dialog box opens.
- 5** In the **User Variables for <user name>** list, click **New**. The New User Variable dialog box opens.
- 6** In the **Variable Name** box, type LSHOST or LSFORCEHOST.
- 7** In the **Variable Value** box, type the full name of the license server. Alternatively, you may enter the IP address of the host computer.

Note: For multiple host names (i.e., where there are Mercury Functional Testing Concurrent License Servers running on one network), use a semicolon (;) to separate the hosts' names or IP addresses in the Value box.

- 8 Click **OK** to close the New User Variable dialog box.

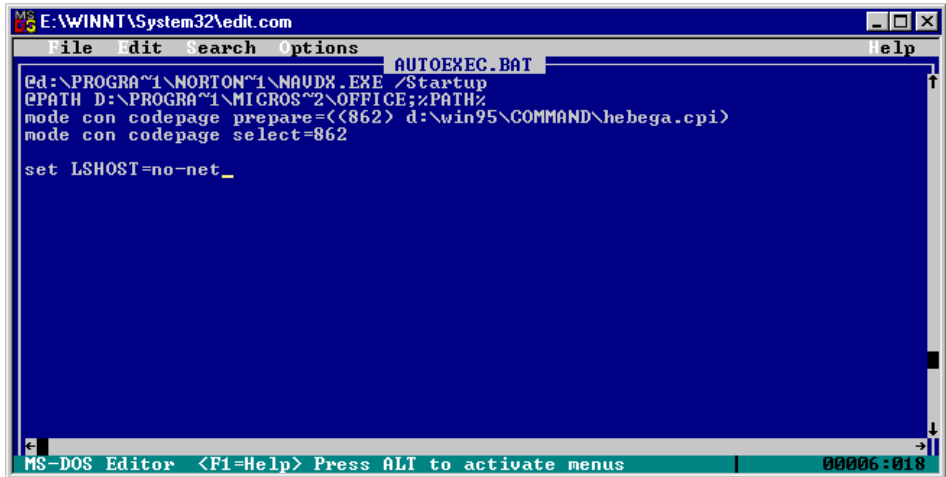


- 9 Under **System variables**, click **New**. The New System Variable dialog box opens.
- 10 Repeat steps 6 and 7.
- 11 Click **OK** to close the New System Variable dialog box.
- 12 Click **OK** to close the Environment Variables dialog box.
- 13 Click **OK** to close the System Properties dialog box.

To set the LSHOST or LSFORCEHOST variables if the client computer is running Windows 98/Me:

- 1 Click **Start > Run**.
- 2 In the **Open** box, type `sysedit`. The System Configuration Editor opens, displaying system files.
- 3 Make the following addition to the **AUTOEXEC.BAT** file:

Set `LSHOST=<full name or IP address of server>`

A screenshot of the MS-DOS Editor window. The title bar reads 'E:\WINNT\System32\edit.com'. The menu bar includes 'File', 'Edit', 'Search', 'Options', and 'Help'. The main text area shows the contents of the AUTOEXEC.BAT file, which includes several lines of commands: 'cd:\PROGRAM~1\NORTON~1\NAUDY.EXE /Startup', '@PATH D:\PROGRAM~1\MICROS~2\OFFICE;%PATH%', 'mode con codepage prepare=<<862> d:\win95\COMMAND\hebega.cpi', 'mode con codepage select=862', and 'set LSHOST=no-net_'. The status bar at the bottom indicates 'MS-DOS Editor <F1=Help> Press ALT to activate menus' and a memory address '00006:018'.

Note: For multiple host names (i.e., where there are multiple QuickTest Professional license servers on one network), use a semicolon (;) to separate the hosts' names or IP addresses in the Value box.

- 4 Save and close the **AUTOEXEC.BAT** file.

Working with Commuter Licenses

Commuter licensing enables concurrent license users to temporarily use a WinRunner concurrent license on a computer that is not connected to the network (and therefore cannot obtain a concurrent license from the license server in the regular way). For example, suppose you need to travel on business with your laptop computer and you want to use WinRunner while you are away. You can check out a WinRunner license from the concurrent license server to use for the duration of your trip, and then check the license back in upon your return. Commuter licenses are valid for up to 30 days, according to your requirements. For more information, see “Checking Out a Commuter License” on page 54, and “Checking In a Commuter License” on page 56.

In addition, if you are unable to check out a license before you disconnect from the network (i.e., leave for your trip), or if you checked out a license but it expired because your return from your trip was delayed, you can ask a local network user to check out a commuter license and send it to you remotely. For more information, see “Obtaining a Commuter License Remotely” on page 58.

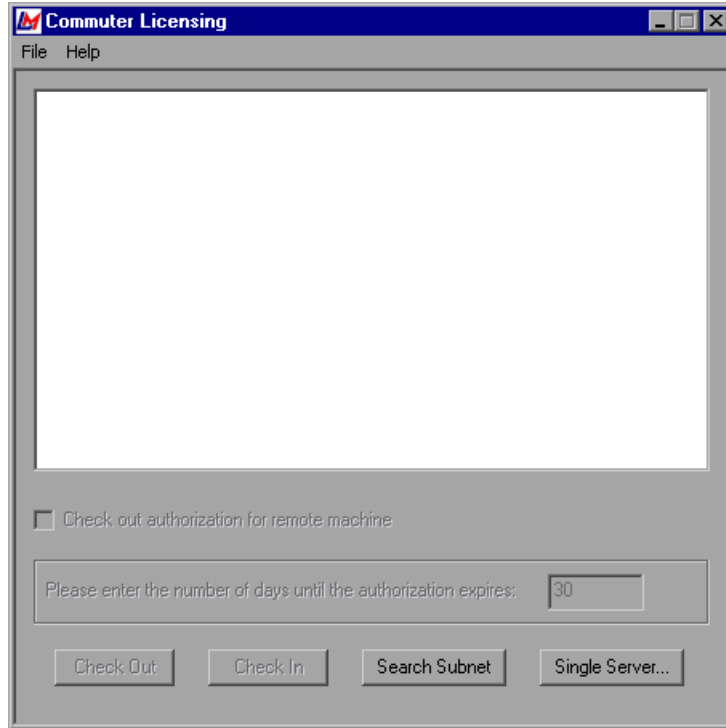
Note: Commuter licensing is supported by Mercury Functional Testing Concurrent License Server version 7.6 and later. If you have upgraded to Mercury Functional Testing Concurrent License Server version 7.6 or later, you need to request a new server license code to enable the commuter licensing functionality. For details, contact Mercury Interactive Customer Support or your local representative.

Checking Out a Commuter License

Before you check out a commuter license, ensure that the computer (for example, a laptop) on which you want to install the commuter license has WinRunner installed, is connected to the network, and has access to a license server with an available WinRunner license. After you have checked out the license, you can disconnect the computer from the network.

To check out a commuter license:

- 1 Run the **WCommute.exe** file located in <WinRunner installation folder>\arch. The Commuter Licensing dialog box opens.



- 2 To see commuter licenses available on all license servers located within your subnet, click **Search Subnet**. If there is a specific license server you want to use, or you want to select a license server outside of your subnet, click **Single Server**.
 - If you clicked **Search Subnet**, the WCommute utility searches the subnet for license servers that support commuter licensing and displays them in the Commuter Licensing dialog box. Note that this process may take several minutes.
 - If you clicked **Single Server**, a dialog box opens for you to specify the license server you want to locate. Enter the license server computer's host name, IP address, or IPX address and click **OK**. The specified license server is located and displayed in the Commuter Licensing dialog box.

For each license server, a list of commuter licenses available to check out is displayed. A red check mark next to a commuter license means that you have already checked out that license to your computer. You cannot check out multiple licenses for the same application to the same computer.

- 3** Select the license that you want to check out.
- 4** In the **Please enter the number of days until the authorization expires** box, specify the maximum number of days to check out the license (up to a maximum of 30 days).

Note: When you check out a license, it decreases the number of licenses available for use by others. Therefore, you should specify the minimum number of days that you require.

- 5** Click **Check Out**. The selected license is saved locally on your computer.
- 6** To use the new checked-out license, open WinRunner and change your license type from concurrent to seat. For more information, see “Changing the License Type” on page 48.

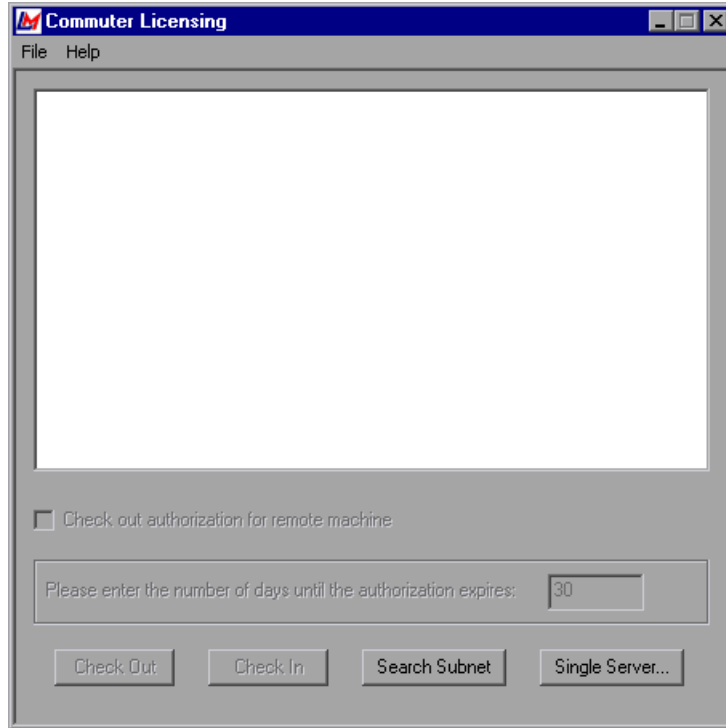
Checking In a Commuter License

When you have finished using the commuter license, you should check it in from your computer to the license server from which you checked it out. This makes the license available to other users.

Note: If your license has expired, you do not need to check it in. Once a license expires, you cannot use it and it is automatically returned to the license server, even if your computer is not connected to the license server network.

To check in a commuter license:

- 1 Run the **WCommute.exe** file located in <WinRunner installation folder>\arch. The Commuter Licensing dialog box is displayed.



- 2 Locate the license server for the commuter license you want to check in, as described in step 2 of “Checking Out a Commuter License” on page 55. You must check in the license to the same license server from which you checked it out.
- 3 Select the license you previously checked out.

Tip: The checked-out license is indicated by a red check mark.

- 4** Click **Check In**. The license is returned to the license server, and is made available for use by others. To use WinRunner again, you must first change your license type from seat to concurrent. For more information, see “Changing the License Type” on page 48.

Obtaining a Commuter License Remotely

Remote commuter licensing enables a local network user to locally check out a WinRunner commuter license and send it to you for installation on a remote computer. This is useful in situations where you are currently not connected to the license server network (for example, you may be out of the office on an extended business trip), but need to be able to use WinRunner.

The following procedure summarizes the process of obtaining a commuter license remotely.

To obtain a commuter license remotely:

- 1** Run the WRCommute utility to generate a commuter locking code for your computer and send the commuter locking code to a local user who has access to the Mercury Functional Testing Concurrent License Server. For more information, see “Generating a Remote Computer Locking Code” on page 59.
- 2** Ask the local user to run the WCommute utility (entering the commuter locking code you generated) to check out a remote commuter license, and send it to you. For more information, see “Checking Out a Commuter License for a Remote Computer” on page 60.
- 3** Run the WRCommute utility to install the remote commuter license on your computer. For more information, see “Installing a Commuter License on a Remote Computer” on page 63.
- 4** Open WinRunner and change your license type from concurrent to seat. For more information, see “Changing the License Type” on page 48.

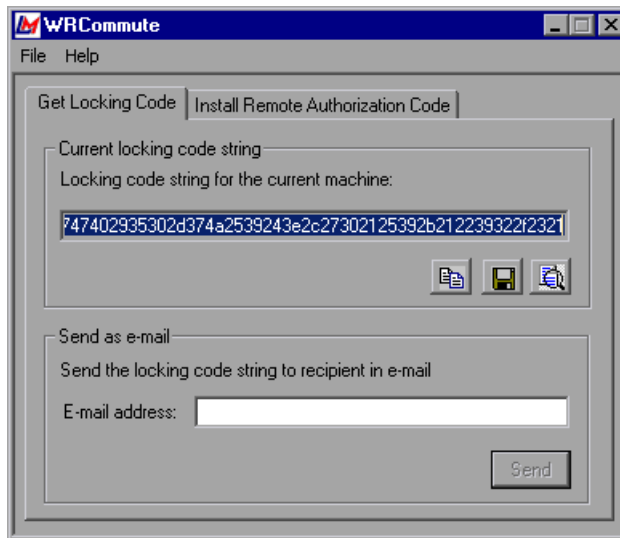
Generating a Remote Computer Locking Code

The first step in remotely obtaining a commuter license is to generate a locking code on your computer and transfer it (by e-mail) to a network user who has access to the license server.

Note: The remote computer locking code used to lock a commuter license is not the same as the locking code displayed by the ECHOID utility. You must use the WRCommute utility to obtain the commuter license locking code.

To generate a locking code on a remote computer:

- 1 Run the **WRCommute.exe** file located in <WinRunner installation folder>\arch. The WRCommute dialog box is displayed.



The **Locking code string for the current machine** box contains the locking code that you need to e-mail to a network user who has access to the license server containing the WinRunner licenses.

- 2** Send the locking code to the local network user in one of the following ways:



- ▶ Select the locking code string and click the **Copy** button to copy the string to your Windows clipboard. Then open your e-mail program and paste the string into a new e-mail message and e-mail it to the local network user.



- ▶ Click the **Save** button to save the locking code in a file. Specify the name and location for the file, and then attach the file to a new e-mail message and e-mail it to the local network user.



- ▶ Click the **Display** button to display the entire locking code in another dialog box. You can then select the locking code string, right-click it and select **Copy** to copy it to your Windows clipboard. Then open your e-mail program and paste the string into a new e-mail message and e-mail it to the local network user.

- ▶ In the **E-mail address** box, enter the e-mail address of the local network user and click **Send**. Note that this option is supported only if Microsoft Outlook Express is set up as your e-mail client.

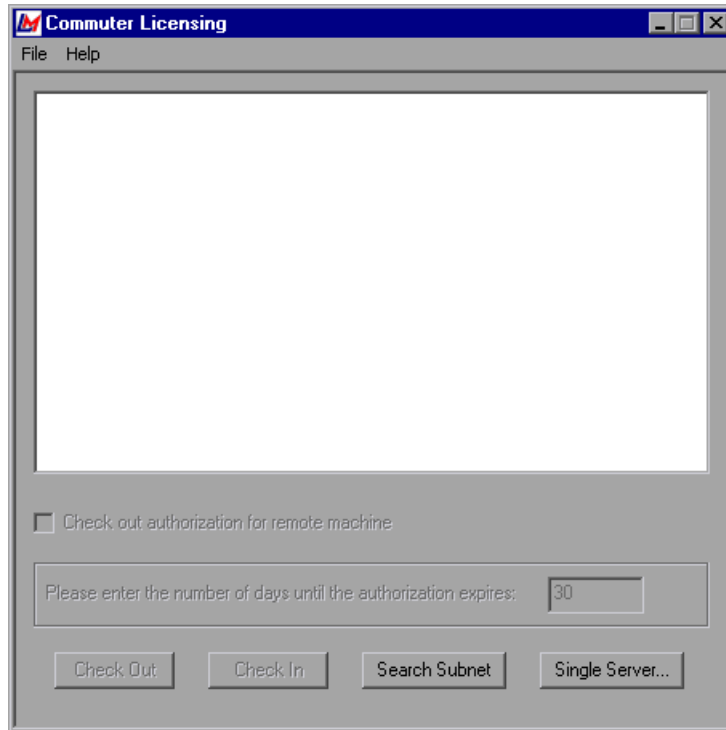
Checking Out a Commuter License for a Remote Computer

The next step in remotely obtaining a commuter license is for a local network user to check out the license, and then transfer it to you (by e-mail).

To check out a commuter license for a remote computer:

Note: The following procedure can be performed only by a local network user who has WinRunner installed on his or her computer and also has access to the license server that contains the WinRunner license.

- 1 Run the **WCommute.exe** file located in **<WinRunner installation folder>\arch**. The Commuter Licensing dialog box is displayed.

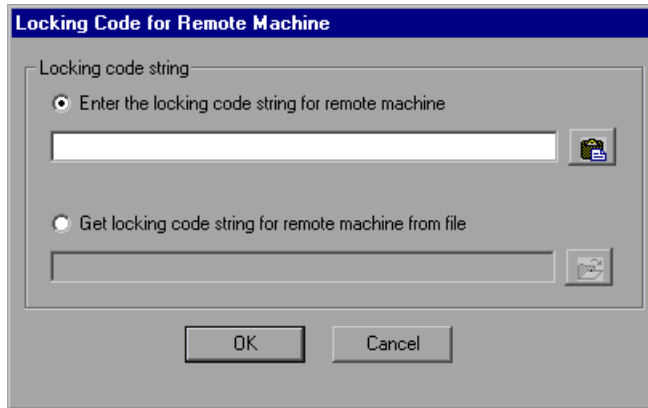


- 2 Locate the license server from which you want to check out a remote commuter license, as described in step 2 of "Checking Out a Commuter License" on page page 55.

For each license server, a list of commuter licenses that you can check out is displayed.

- 3 Select the license that you want to check out.
- 4 Select the **Check out authorization for remote machine** check box.

5 Click **Check Out**. The Locking Code for Remote Machine dialog box opens.

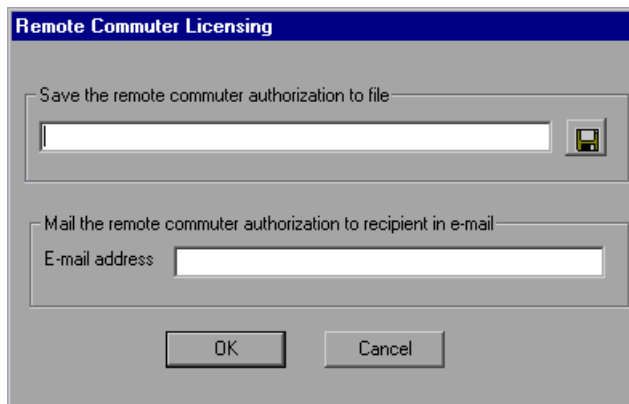


6 Enter the locking code that the remote user e-mailed you in one of the following ways:

- If the locking code was e-mailed to you in the body of an e-mail, copy it to your Windows clipboard. In the Locking Code for Remote Machine dialog box, select **Enter the locking code string for remote machine** and then click the **Paste** button.
- If the locking code was e-mailed to you as an attached file, save the attachment and then select **Get locking code string for remote machine from file**. Click the **Load** button. Select the file that contains the locking code and click **Open**.



7 Click **OK**. The Remote Commuter Licensing dialog box opens.



- 8** Send the commuter license to the remote user in one of the following ways:



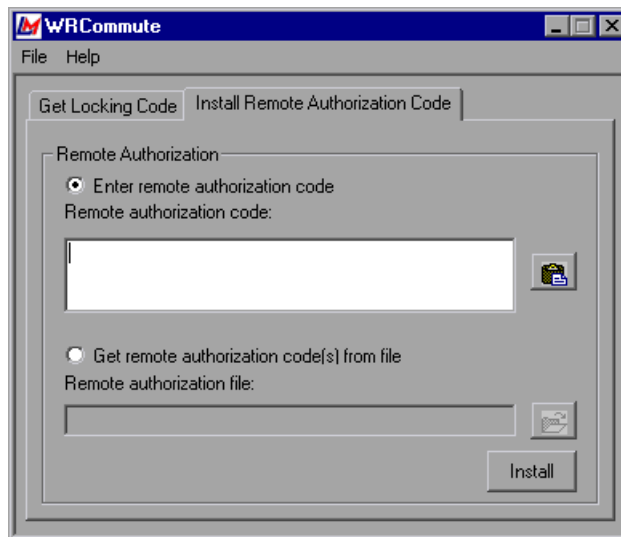
- Click the **Save** button to save the locking code in a file. Specify the name and location for the file, click **Save** and then click **OK**. Attach the file to a new e-mail message and e-mail it to the remote user.
- In the **E-mail address** box, enter the e-mail address of the remote user. Click **Send** and then click **OK**. Note that this option is only supported if Microsoft Outlook Express is set up as your e-mail client.

Installing a Commuter License on a Remote Computer

The final step in remotely obtaining a commuter license is to install the license that was sent to you by the network user on your computer.

To install a commuter license on a remote computer:

- 1** Run the **WRCommute.exe** file located in **<WinRunner installation folder>\arch**. The WRCommute dialog box is displayed.
- 2** Click the **Install Remote Authorization Code** tab.



3 Enter the commuter license that the network user e-mailed you in one of the following ways:



▶ If the commuter license was e-mailed to you in the body of an e-mail, copy it to your Windows clipboard. In the Install Remote Authorization Code tab of the WRCommute dialog box, select **Enter remote authorization code** and then click the **Paste** button.



▶ If the commuter license was e-mailed to you as an attached file, save the attachment and then select **Get remote authorization code(s) from file**. Click the **Load** button, select the file that contains the locking code, and click **Open**.

4 Click **Install**. The new license code is installed on your computer.

5 Open WinRunner and change your license type from concurrent to seat. For more information, see “Changing the License Type” on page 48.

Note: A remote commuter license cannot be checked in to the license server when you have finished using it—it simply expires on the remote computer. After you return to your office and are reconnected to the network, you should change your license type from seat to concurrent. For more information, see “Changing the License Type” on page 48.

Configuring Visual Basic 4.0 and 5.0 Support

Before you can start testing a Visual Basic 4.0 or 5.0 application using WinRunner's add-in support for Visual Basic, you (or the application developer) must configure the Visual Basic application you want to test.

Note: In previous versions of WinRunner, you were also required to configure your Visual Basic 6.0 applications. In WinRunner 7.6, there is no need to configure your Visual Basic 6.0 application. If, however, you have already added the WinRunner agent to your Visual Basic 6.0 application for use with previous versions of WinRunner, there is no need to remove it.

Configuring Visual Basic 4.0 Support

To configure support for your Visual Basic 4.0 application in Windows 98, Windows NT, Windows 2000, or Windows Me (32-bit), you (or the application developer) must compile the WinRunner OCX (wrvb40.ocx) in your Visual Basic application.

To configure 32-bit Visual Basic 4.0 support:

- 1** Start Visual Basic 4.0 and open the project.
- 2** Select **Tools > Custom Controls**.
- 3** In the **Custom Controls** dialog box, select the **Wrvb40 OLE Custom Control Module** item. Click **OK**. The item is added to the toolbar.
- 4** Drag the new item onto the main application form.
- 5** Right-click this object and select **View Code**.
- 6** Select **Object > Form**.

- 7 Insert the following line into the beginning of the **Form_Load** function:

```
Wrvb1.Init Forms
```

For example:

```
Private Sub Form Load ()  
...  
Wrvb1.Init Forms  
...  
End Sub
```

- 8 Run or recompile your application and run the *.exe* file.

Configuring Visual Basic 5.0 Support

WinRunner's add-in support for Visual Basic 5.0 applications includes all the support provided for Visual Basic 4.0 applications, plus:

- all standard Visual Basic 5.0 controls
- Visual Basic projects that create ActiveX controls

To configure support for your Visual Basic 5.0 application:

- 1 If your application currently references the WinRunner OCX, you must first remove all references from forms, as well as the associated code (Wrb1.Init Forms).
- 2 Add the WinRunner agent to the application by running the **setup.exe** program from the **\vbdev** directory on the WinRunner installation CD-ROM.

The WinRunner agent installation installs an AddIn to your Visual Basic IDE. The name of this AddIn is WinRunnerAddIn.Connect. It adds lines of code to your Visual Basic source code as described below.

WinRunnerAddIn.Connect:

- adds a reference to the **wrvbasr.dll** component

- adds a new code Module to the Visual Basic project called “WinRunnerSupport”
- adds a line to the WinRunnerSupport Module:
Global asr As New WRVBASRLib.VbMod
- adds code to the StartUp object:
If the Startup Object is a Form, the AddIn adds the following line of code to the **Form_Load** event: asr.Init Forms
If the Startup Object is Sub Main, the AddIn adds the following line of code to the **Main()** method: asr.Init Forms
- For all Class modules in the project, the AddIn adds the following line of code to the **Class_Initialize** event: asr.Init Forms
- For all UserControl modules in the project, the AddIn adds the following line of code to the **UserControl_Initialize** event: asr.Init Forms, UserControl
- For all UserDocument modules in the project, the AddIn adds the following line of code to the **UserControl_Initialize** event: asr.Init Forms, UserDocument

Notes:

If the error message: DllRegisterServer in <Windows directory>\system\wrvbasr.dll failed is displayed during the WinRunner agent installation, copy the file **oleaut32.dll** (version 2.20.4054.1 or later) to your system directory and re-install the WinRunner agent.

Do not run WinRunner and the Visual Basic IDE together.

Test your application only as a running executable.

Enabling Table Contents Checks for an ActiveX Control

To enable support for table contents verification on any ActiveX control that can be viewed as a table object, you must implement a capture function for the ActiveX control in Visual Basic and then execute a TSL function.

WinRunner includes Visual Basic project files (**wrvbsrv4.vbp** for Visual Basic 4.0 and **wrvbsrv5.vbp** for Visual Basic 5.0 or 6.0) that compile into an OLE Automation Server. WinRunner uses this server to capture table contents.

Follow these steps to enable contents verification on an ActiveX control that can be viewed as a table object:

- 1** Start Visual Basic 4.0/5.0/6.0.
- 2** In Visual Basic, open the appropriate wrvbsrv project file (**wrvbsrv4.vbp** or **wrvbsrv5.vbp**) located in the WinRunner installation folder under **custom\wrvbsrv**.
- 3** Open **capture.cls** and add a Sub routine with the following prototype:

```
Public Sub<CaptureFunctionName>(ByVal <tab_ctrl> As Object, ByVal  
<file_name> As String)
```

The function should dump the table contents of the ActiveX control into <file_name> in the following format:

cells separated by Tab(Chr(9)), rows separated by Newline.

Note: Cell data should not contain escape characters such as tabs or new lines. Cells in the first row (column titles) should not contain escape characters or space characters. See the MSGridCapture Sub routine in the wrvbsrv project file for an example.

4 Compile the project into a **.dll**.

For Visual Basic 4.0, from the File menu select **Make OLE DLL file**.

For Visual Basic 5.0 or 6.0, from the File menu select **Make WRVBSRV DLL file**.

5 In WinRunner, execute the **add_table_capture_function** statement. Set the second argument to the name of the Sub you implemented in the Visual Basic function. For example:

```
add_table_capture_function ("MSGrid.Grid", "MSGridCaptureFunc");
```

Configuring WinRunner to Work with Embedded Browser Controls

When working with embedded browser controls inside applications other than the Internet Explorer or Netscape browsers, you must specify the applications in **wrun.ini**.

To configure WinRunner to Work with Embedded Browser Controls

- 1** Confirm that Microsoft Active Accessibility is installed.
- 2** Open **<WinRunner installation folder>\dat\wrun.ini** in a text editor.
- 3** Add a line to the [ie_hooks] section of **wrun.ini** for each application in the format: **<MyApp.exe>=yes**, where **<MyApp.exe>** is the name of your application.

Adding WinRunner Components

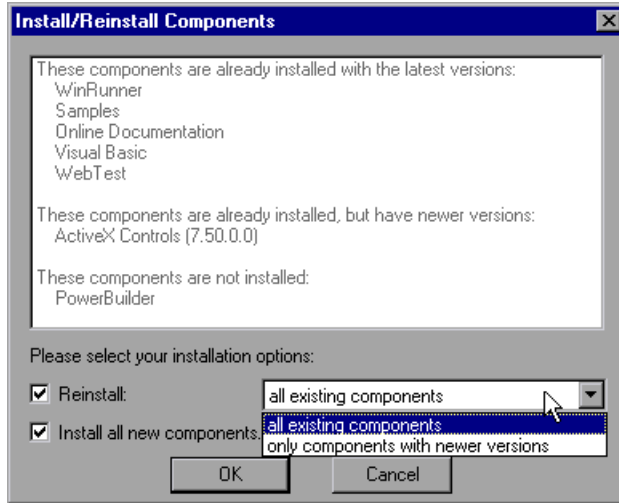
Once you install WinRunner, you can run the setup program at any time to add program components, such as an additional development environment or control support, samples, or online documentation.

If you are unsure which options to select while adding program components, refer to the corresponding step in the “Installing WinRunner” section of this guide for more information.

To add components:

- 1** Insert the CD-ROM into the drive from which you want to add WinRunner components. If the CD drive is on your local machine, the WinRunner Setup window opens. If you are installing from a network drive, connect to it and run **autorun.exe** under the **\setup** subdirectory.
- 2** Click **Install**. The WinRunner setup program starts. The WinRunner Setup splash screen and the Setup progress bar open.
- 3** The software license agreement appears. To accept the terms of the license agreement, click **Yes**. If you click **No**, the setup program will close. To install additional WinRunner components, you must accept the license agreement.
- 4** In the Registration Information dialog box, confirm that your name, the name of your company, and the WinRunner maintenance number are correct. Click **Next** to proceed.
- 5** Click **Yes** to confirm the registration information.
- 6** Select your installation type: **Standalone Installation**, **Network Installation**, or **Network Installation and add shortcuts to your Start menu**. Click **Next** to proceed.
- 7** Choose **Custom Installation**. Click **Next** to proceed.
- 8** Select the components you want to install and specify the destination folder. The folder must be the WinRunner installation folder. Click **Next** to proceed.

- 9 Select **Yes**, **No**, or **Use local update folder** to set your update components preferences. Click **Next** to proceed.
- 10 The Install/Reinstall Components screen opens.



Decide whether to reinstall **all existing components** or **only components with newer versions**, and whether to **Install all new components**.

- 11 If you chose **Network Installation and add shortcuts to your Start menu** in step 6, select a location for the local WinRunner folder. Click **Next** to proceed.

Note: If you are adding components to a network installation that has already been used for one or more network installations, you must uninstall WinRunner from the workstations and then run the workstation installation(s) again to update each workstation with the new components.

- 12 Select a location for temporary WinRunner files. Click **Next** to proceed.
- 13 Select a program folder for WinRunner icons. Click **Next** to proceed.

- 14** The installation settings you selected are displayed in a read-only window. Review the settings. If you want to select different settings, click **Back**. If you are satisfied with the settings, click **Next**.

The installation process begins.

To pause or quit the installation process, click **Cancel**.

- 15** Read the information about accessing online documentation. If you installed add-in support for Visual Basic applications, additional information appears on your screen. Click **Next** to proceed.

- 16** Read about the type of license you are using. Click **Next**.

The installation process is complete.

- 17** Read the information about Mercury Interactive's Customer Support. To register as a Mercury Interactive customer now, select the **Register now** check box. Mercury Interactive's Customer Support Web site opens to the registration page. Click **Next**.

- 18** Choose whether or not to restart your computer and click **Finish**.

Note: It is strongly recommended that you restart your computer as soon as possible. Delaying the system restart could result in unexpected system problems.

Uninstalling WinRunner

Your WinRunner installation includes an uninstall program that uninstalls WinRunner software and files from your computer and removes WinRunner shortcuts from your **Start** menu.

To uninstall WinRunner:

- 1** Click **Programs > WinRunner > Uninstall WinRunner** on your **Start** menu. Click **Yes** to confirm that you want to uninstall WinRunner.
- 2** The Uninstall Shield window opens. You may be prompted to remove shared files that are not in use by any other program. If you are not sure what to do, click **No to All**.

The Uninstall program removes WinRunner from your computer.

- 3** When the Uninstall program is complete, the OK button is enabled. Click **OK**.
- 4** You must restart your computer to complete the uninstall process.

Note: If you try to reinstall WinRunner before restarting your computer, WinRunner may not be installed properly.



Mercury Interactive Corporation

1325 Borregas Avenue
Sunnyvale, CA 94089 USA

Main Telephone: (408) 822-5200

Sales & Information: (800) TEST-911, (866) TOPAZ-4U

Customer Support: (877) TEST-HLP

Fax: (408) 822-5300

Home Page: www.mercuryinteractive.com

Customer Support: support.mercuryinteractive.com



* W R I 6 7 . 6 / 0 1 *