

WinRunner Forte Add-in

Installation Guide

Version 7.0

WinRunner Forte Add-in Installation Guide, Version 7.0

This manual, and the accompanying software and other documentation, is protected by U.S. and international copyright laws, and may be used only in accordance with the accompanying license agreement. Features of the software, and of other products and services of Mercury Interactive Corporation, may be covered by one or more of the following patents: U.S. Patent Nos. 5,701,139; 5,657,438; 5,511,185; 5,870,559; 5,958,008; 5,974,572; 6,138,157; 6,144,962; 6,205,122; 6,237,006; 6,341,310; 6,360,332, 6,449,739; 6,470,383; 6,477,483; 6,549,944; 6,560,564; and 6,564,342. Other patents pending. All rights reserved.

ActiveTest, ActiveTune, Astra, FastTrack, Global SiteReliance, LoadRunner, Mercury, Mercury Interactive, the Mercury Interactive logo, Open Test Architecture, Optane, POPs on Demand, ProTune, QuickTest, RapidTest, SiteReliance, SiteRunner, SiteScope, SiteSeer, TestCenter, TestDirector, TestSuite, Topaz, Topaz AIMS, Topaz Business Process Monitor, Topaz Client Monitor, Topaz Console, Topaz Delta, Topaz Diagnostics, Topaz Global Monitor, Topaz Managed Services, Topaz Open DataSource, Topaz Real User Monitor, Topaz WeatherMap, TurboLoad, Twinlook, Visual Testing, Visual Web Display, WebTest, WebTrace, WinRunner and XRunner are trademarks or registered trademarks of Mercury Interactive Corporation or its wholly owned subsidiary Mercury Interactive (Israel) Ltd. in the United States and/or other countries.

All other company, brand and product names are registered trademarks or trademarks of their respective holders. Mercury Interactive Corporation disclaims any responsibility for specifying which marks are owned by which companies or which organizations.

Mercury Interactive Corporation
1325 Borregas Avenue
Sunnyvale, CA 94089 USA
Tel: (408) 822-5200
Toll Free: (800) TEST-911, (866) TOPAZ-4U
Fax: (408) 822-5300

© 2001 Mercury Interactive Corporation, All rights reserved

If you have any comments or suggestions regarding this document, please send them via e-mail to documentation@merc-int.com.

Table of Contents

Before You Install	1
System Requirements	1
Setting up the Forte Add-in Support	3
Installing the WinRunner Forte Add-in	3
Setting-up Forte Add-in Support for the 3.0.M.0 series	6
Activating WinRunner with Forte Support	7
Disabling Forte Add-in Support	9

Forte Add-in Installation Guide

Before You Install

Welcome to the Forte Add-in for WinRunner 7.0. The Forte Add-in enables you to record and run tests on standard Forte objects and to map Forte objects to standard WinRunner object classes. With the Forte Add-in you can read and set object properties and add GUI checkpoints to your script to check Forte object properties as well as standard WinRunner properties.

This guide describes how to install Add-in support for Forte objects.

Before you begin to install the Forte Add-in, please review the system requirements listed below.

System Requirements

To successfully run WinRunner with the Forte Add-ins, you need the following minimum system requirements:

Prerequisites	WinRunner 7.0 or later standalone installation.
Platform	An IBM-PC or compatible with a Pentium® /100MHz or higher microprocessor.
Memory	32 MB of RAM memory.
Operating System	Windows 95, Windows 98, Windows NT 4.0, or Windows 2000.
Hard Disk Space	The add-in support for Forte applications adds approximately 2.8MB to your WinRunner installation.
Forte Environment	Forte 3.0.M.(X).

Note: The Forte Add-in supports Forte 3.0.M.(X).

You may work with the Forte version 3.0.L.5, but this is not recommended.

For the 3.0.M.0 version only, you need the following file: *WinRunner installation directory\arch\qqds.dll*. If you are not using 3.0.M.0, you can delete this file.

Setting up the Forte Add-in Support

To install the WinRunner Forte Add-in, you run the setup program supplied on the Forte Add-in for WinRunner CD-ROM. If you are working with the Forte 3.0.M.0 series, you must also copy the *qqds.dll* file into your Forte installation folder before using the add-in. To work with the add-in, you load the Forte Add-in using the WinRunner Add-in Manager.

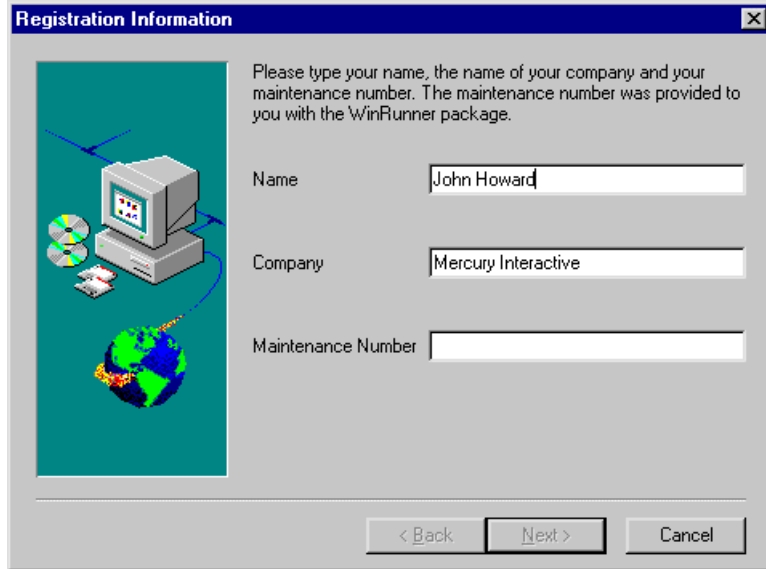
Installing the WinRunner Forte Add-in

The Forte Add-in setup program installs the Forte Add-in in your WinRunner installation folder.

To install Forte Add-in support:

- 1** Insert the CD-ROM into the drive from which you want to install. If you are installing from a network drive, connect to it.
- 2** Select **Run** on the **Start** menu.
- 3** Type the location from which you are installing, and `setup.exe`. For example, type `d:\setup.exe`.

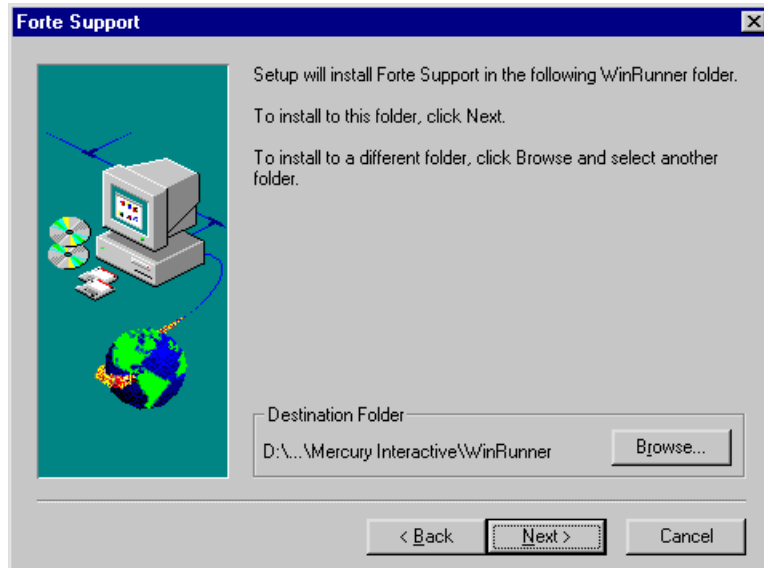
- 4 In the **Registration Information** screen, type your name, the name of your company, and a WinRunner maintenance number. This number can be found in the Maintenance Pack Number envelope or on the bill of lading you received when you purchased WinRunner. Note that there is a single maintenance number for each team of users. The maintenance number replaces what was formerly a serial number for each purchased copy of WinRunner. The maintenance number identifies the customer.



Click **Next**.

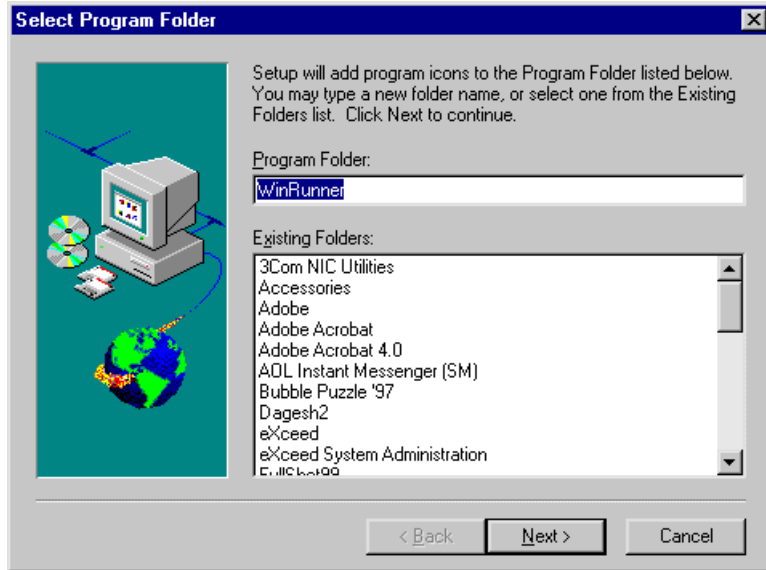
- 5 Click **Yes** to confirm the registration information.

- Specify the folder in which to install the Forte Add-in. The destination folder must be the WinRunner installation folder. If the displayed installation folder is not the WinRunner installation folder, click **Browse** to find the correct destination folder.



Click **Next**. The installation process begins. To pause or quit the installation, click **Cancel**.

7 Select the program folder for the Forte Add-in icons.



Click **Next**.

- 8 The Forte Add-in installation is complete. Click **Finish**. It is recommended to restart your computer.
- To read what's new in the Add-in support for Forte, and any last minute information, select the **Yes, I want to view the Read Me File** check box.

Setting-up Forte Add-in Support for the 3.0.M.0 series

If you are using the Forte 3.0.M.0 series, copy *<WinRunner installation folder>\arch\qqds.dll* into the *<Forte installation folder>\install\bin* folder.

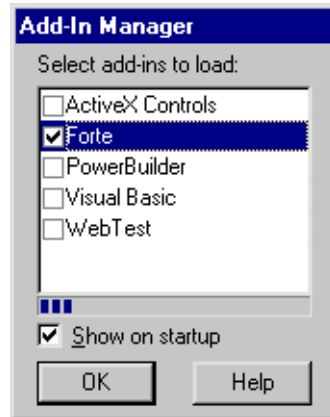
If you are not using Forte 3.0.M.0, you can delete the file, *<WinRunner installation folder>\arch\qqds.dll*.

You are now ready to create and run tests on Forte applications.

Activating WinRunner with Forte Support



To start WinRunner with support for Forte applications, choose **Programs > WinRunner > WinRunner** from the **Start** menu. The Add-in Manager dialog box opens. Select **Forte** and click **OK**. (If the Add-In Manager dialog box does not open, see the note below.)



Note:

If the Add-In Manager dialog box does not open:

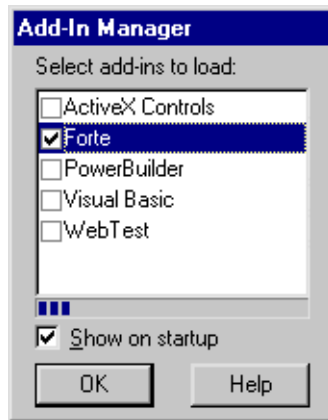
- 1** Start WinRunner.
 - 2** Choose **Settings > Options** and click the **Environment** tab. Select **Show Add-in Manager dialog for ___ seconds** and fill in a comfortable amount of time in seconds. (The default value is 10 seconds.)
 - 3** Click **OK**.
 - 4** Close WinRunner. A WinRunner Message dialog opens asking “Would you like to save changes made in the configuration?” Click **Yes**.
 - 5** Open WinRunner again and proceed from “Activating WinRunner with Forte Support” above.
-

Disabling Forte Add-in Support

If you decide not to use Forte support, you can disable the Forte add-in.

To disable the add-in support:

- 1** Choose **Programs > WinRunner > WinRunner** from the **Start** menu to open WinRunner.
- 2** After the opening screen appears, the Add-In Manager dialog box opens. (If the Add-In Manager dialog box does not open, see the note below.)



To disable Forte support, clear the **Forte** check box.

- 3** Click **OK**. WinRunner opens with the add-in support disabled.

Note:

If the Add-In Manager dialog box does not open:

- 1** Start WinRunner.
 - 2** Choose **Settings > Options** and click the **Environment** tab. Select **Show Add-in Manager dialog for ___ seconds** and fill in a comfortable amount of time in seconds. (The default value is 10 seconds.)
 - 3** Click **OK**.
 - 4** Close WinRunner. A WinRunner Message dialog opens asking “Would you like to save changes made in the configuration?” Click **Yes**.
 - 5** Open WinRunner again and proceed from Step 2 in “To disable the add-in support,” above.
-



Mercury Interactive Corporation

1325 Borregas Avenue
Sunnyvale, CA 94089 USA

Main Telephone: (408) 822-5200

Sales & Information: (800) TEST-911, (866) TOPAZ-4U

Customer Support: (877) TEST-HLP

Fax: (408) 822-5300

Home Page: www.mercuryinteractive.com

Customer Support: support.mercuryinteractive.com



* WRF OR1 G7. 0 / 01 *