

WinRunner Delphi Add-in

Installation Guide
Version 7.6

WinRunner Delphi Add-in Installation Guide, Version 7.6

This manual, and the accompanying software and other documentation, is protected by U.S. and international copyright laws, and may be used only in accordance with the accompanying license agreement. Features of the software, and of other products and services of Mercury Interactive Corporation, may be covered by one or more of the following patents: U.S. Patent Nos. 5,701,139; 5,657,438; 5,511,185; 5,870,559; 5,958,008; 5,974,572; 6,138,157; 6,144,962; 6,205,122; 6,237,006; 6,341,310; 6,360,332, 6,449,739; 6,470,383; 6,477,483; 6,549,944; 6,560,564; and 6,564,342. Other patents pending. All rights reserved.

ActiveTest, ActiveTune, Astra, FastTrack, Global SiteReliance, LoadRunner, Mercury, Mercury Interactive, the Mercury Interactive logo, Open Test Architecture, Optane, POPs on Demand, ProTune, QuickTest, RapidTest, SiteReliance, SiteRunner, SiteScope, SiteSeer, TestCenter, TestDirector, TestSuite, Topaz, Topaz AIMS, Topaz Business Process Monitor, Topaz Client Monitor, Topaz Console, Topaz Delta, Topaz Diagnostics, Topaz Global Monitor, Topaz Managed Services, Topaz Open DataSource, Topaz Real User Monitor, Topaz WeatherMap, TurboLoad, Twinlook, Visual Testing, Visual Web Display, WebTest, WebTrace, WinRunner and XRunner are trademarks or registered trademarks of Mercury Interactive Corporation or its wholly owned subsidiary Mercury Interactive (Israel) Ltd. in the United States and/or other countries.

All other company, brand and product names are registered trademarks or trademarks of their respective holders. Mercury Interactive Corporation disclaims any responsibility for specifying which marks are owned by which companies or which organizations.

Mercury Interactive Corporation
1325 Borregas Avenue
Sunnyvale, CA 94089 USA
Tel: (408) 822-5200
Toll Free: (800) TEST-911, (866) TOPAZ-4U
Fax: (408) 822-5300

© 2003 Mercury Interactive Corporation, All rights reserved

If you have any comments or suggestions regarding this document, please send them via e-mail to documentation@merc-int.com.

Table of Contents

Before You Install	1
Checking Your Package	1
System Requirements	2
Installing Delphi Add-in Support	3
Installing the WinRunner Delphi Add-in	3
Enabling Communications Between WinRunner and your Delphi Application	6
Activating WinRunner with Delphi Support	11
Disabling Delphi Add-in Support	13

Before You Install

Welcome to the Delphi Add-in for WinRunner 7.0. The Delphi Add-in enables you to record and run tests on standard Delphi objects and to map Delphi objects to standard WinRunner object classes. With the Delphi Add-in, you can read and set object properties and add GUI checkpoints to your script to check Delphi object properties as well as standard WinRunner properties.

This guide describes how to install Add-in support for Delphi objects and how to set up Delphi support with the TestSrv unit.

Before you begin to install the Delphi Add-in, please review the following pre-installation procedures.

Checking Your Package

Please make sure your package contains the items below. If any item is missing or damaged, contact Mercury Interactive or your local distributor.

Program Disks

Your package contains:

- ▶ 1 CD-ROM

System Requirements

To successfully run WinRunner with the Delphi Add-in, you need the following minimum system requirements:

Platform	An IBM-PC or compatible with a Pentium® /100MHz or higher microprocessor.
Memory	32 MB of RAM memory.
Operating System	Windows 95, Windows 98, or Windows NT 4.0.
Prerequisites	WinRunner 7.0 standalone installation.

Installing Delphi Add-in Support

The Installation process for Delphi Add-in support is comprised of two stages:

- First, you install the WinRunner Delphi Add-in.
- Then you enable communications between WinRunner and your Delphi application.

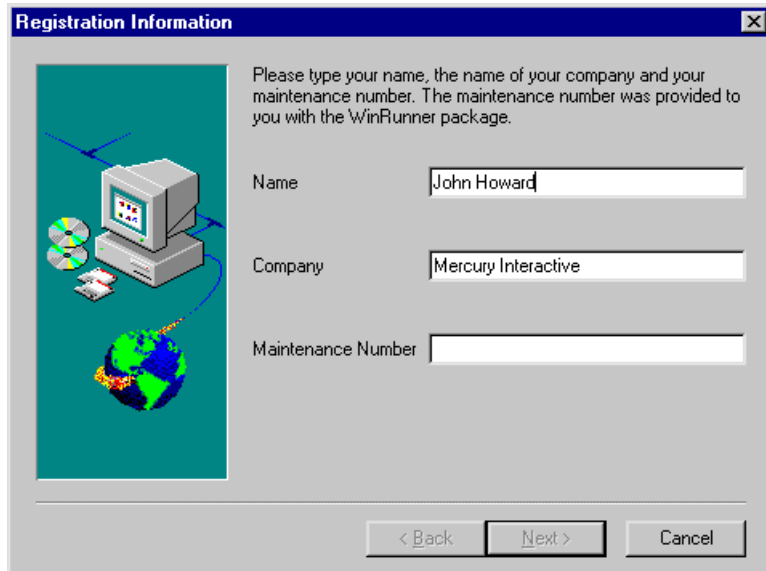
Installing the WinRunner Delphi Add-in

The Delphi Add-in setup program installs the Delphi Add-in in your WinRunner installation folder.

To install Delphi Add-in support:

- 1** Insert the CD-ROM into the drive from which you want to install. If you are installing from a network drive, connect to it.
- 2** Select **Run** in the **Start** menu.
- 3** Type the location from which you are installing, and setup.exe. For example, type d:\setup.exe.
- 4** In the Registration Information screen, type your name, the name of your company, and a WinRunner maintenance number. This number can be found in the Maintenance Pack Number envelope or on the bill of lading you received when you purchased WinRunner.

Note that there is a single maintenance number for each team of users. (The maintenance number replaces what was formerly a serial number for each purchased copy of WinRunner.) The maintenance number identifies the customer.

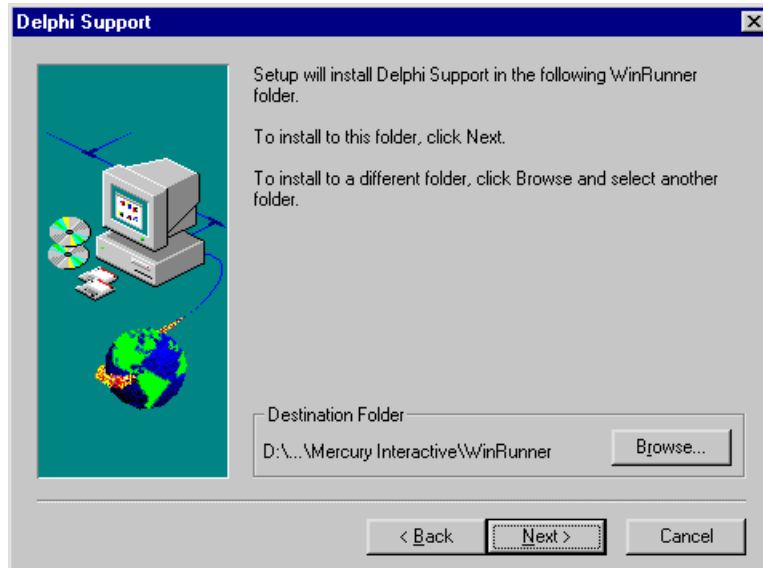


The image shows a Windows-style dialog box titled "Registration Information". On the left side, there is a graphic with a teal background featuring a computer monitor, a CD-ROM, and a globe. To the right of the graphic, there is instructional text: "Please type your name, the name of your company and your maintenance number. The maintenance number was provided to you with the WinRunner package." Below this text are three text input fields. The first field is labeled "Name" and contains the text "John Howard". The second field is labeled "Company" and contains the text "Mercury Interactive". The third field is labeled "Maintenance Number" and is currently empty. At the bottom of the dialog box, there are three buttons: "< Back", "Next >", and "Cancel".

Click **Next**.

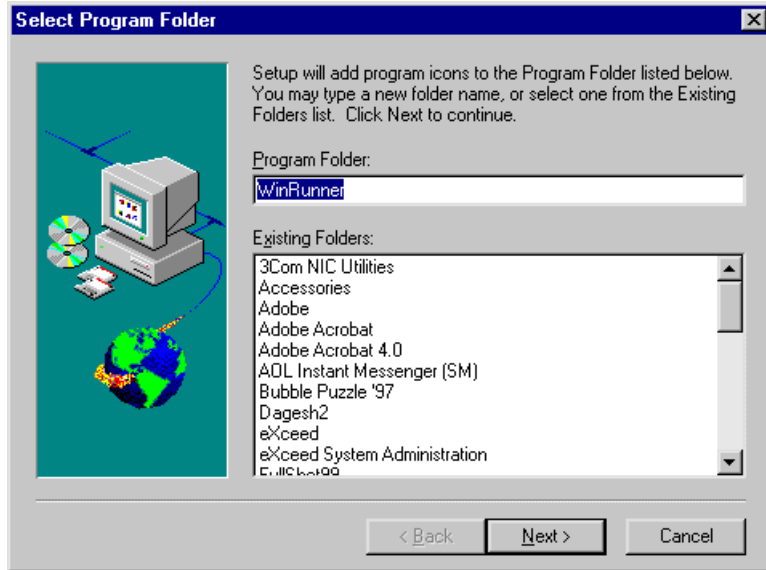
- 5 Click **Yes** to confirm the registration information.

- Specify the folder in which to install the Delphi Add-in. The destination folder must be the WinRunner installation folder. If the installation folder that appears is not the WinRunner installation folder, click **Browse** to find the correct destination folder.



Click **Next**. The installation process begins. To pause or quit the installation, click Cancel.

7 Select the program folder for the Delphi Add-in icons.



Click **Next**.

8 The Delphi Add-in Installation is complete. Click **Finish**. It is recommended to restart your computer.

- To read what's new in the Add-in support for Delphi, and any last minute information, select the **Yes, I want to view the Read Me File** check box.

Enabling Communications Between WinRunner and your Delphi Application

There are two ways to setup Delphi Support with the TestSrvr Unit:

- Run the Delphi Project Setup Wizard
- Link to the TestSrvr.pas module

Note: If you are upgrading from a previous version of WinRunner, you must recompile your application with the new TestSrv unit.

Using the Delphi Project Setup Wizard To Enable Communications

You can use the Delphi Project Setup WinRunner to add WinRunner's TestSrv unit to your Delphi project. The TestSrv unit is a WinRunner agent that handles communications between WinRunner and your Delphi application.

You must run the Wizard for each Delphi project that you want to test.

To Run the Delphi Project Setup Wizard:

- 1 Select **Programs > WinRunner > Delphi Project Setup Wizard** from the **Start** menu. The Wizard opens.
- 2 Type the path or browse to the location of your Delphi project. Click **Go**.



- 3 The Delphi Wizard adds WinRunner's Test Srvr unit to your Delphi project. When it is finished, the Wizard's Finish screen opens. Click **Close**.



- 4 Recompile your project.

Linking to the TestSrvr.pas Module to Enable Communications

You can use the TestSrvr.pas module to manually enable communications between WinRunner and your Delphi application.

You must perform the following steps for each project that you want to test.

To link to the TestSrvr.pas module:

- 1 Add the <WinRunner Installation folder>\TestSrvr folder to your Delphi project search path or copy the contents of the <WinRunner Installation folder>\TestSrvr folder to your project folder.

- 2 Add TestSrvr to the Users section of your applications project file (*project.dpr*) as shown in the example below:

```
program flight;  
uses  
    TestSrvr,  
    Forms,  
    Windows;  
($R*.RES)  
begin  
    Application.Initialize  
    Application.Title := 'Flight Reservation';  
    Application.Run;  
end.
```

Note: TestSrvr must be the first unit in your project.

- 3 Compile your Delphi project.

Note: If your application includes the TwwDBGrid from InfoPower, you must add support for this grid as described below.

Configuring Support for TwwDBGrid

If your application includes the TwwDBGrid from InfoPower, follow the instructions below to enable support for this grid.

- 1 Add MercWwControl to the Users section of your applications project file (*project.dpr*) after TestSrvr, as shown in the example below:

```
program flight;
uses
  TestSrvr,
  MercWwControl,
  Forms,
  Windows;
($R*.RES)
begin
  Application.Initialize
  Application.Title := 'Flight Reservation';
  Application.Run;
end.
```

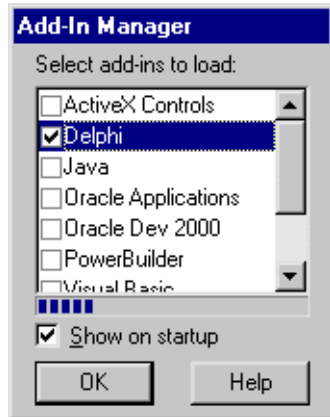
- 2 Recompile your application.

You are now ready to create and run tests on Delphi applications.

Activating WinRunner with Delphi Support



To start WinRunner with support for Delphi applications, select **Programs > WinRunner > WinRunner** from the **Start** menu. The Add-in Manager dialog box opens. (If the Add-In Manager dialog box does not open, see the note below.).



Select **Delphi** and click **OK**.

Note:

If the Add-In Manager dialog box does not open:

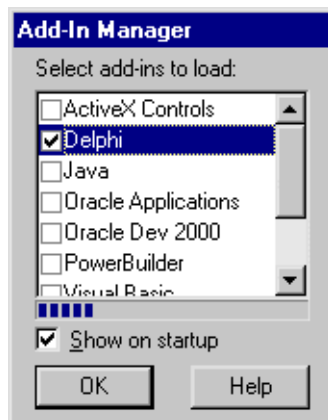
- 1** Start WinRunner.
 - 2** In **Settings > Options > Environment** tab, check **Show Add-in Manager dialog for ___ seconds** and fill in a comfortable amount of time in seconds. (The default value is 10 seconds.)
 - 3** Click **OK**.
 - 4** Close WinRunner. A WinRunner message box prompts you to save changes in the configuration. Click **Yes**.
 - 5** Open WinRunner again. The Add-in Manager dialog box opens.
-

Disabling Delphi Add-in Support

If you decide not to use Delphi support, you can disable the Delphi add-in.

To disable the add-in support:

- 1** Select **Programs > WinRunner > WinRunner** from the **Start** menu to open WinRunner.
- 2** After the opening screen appears, the Add-In Manager dialog box opens for several seconds. (If the Add-In Manager dialog box does not open, see the note below.)



To disable Delphi support, clear the **Delphi** check box.

- 3** Click **OK**. WinRunner opens with the add-in support disabled.

Note:

If the Add-In Manager dialog box does not open:

- 1** Start WinRunner.
 - 2** In **Settings > Options > Environment** tab, check **Show Add-in Manager dialog for ___ seconds** and fill in a comfortable amount of time in seconds. (The default value is 10 seconds.)
 - 3** Click **OK**.
 - 4** Close WinRunner. A WinRunner message box prompts you to save changes in the configuration. Click **Yes**.
 - 5** Open WinRunner again and proceed from Step 2 in “To disable the add-in support” above.
-



Mercury Interactive Corporation

1325 Borregas Avenue
Sunnyvale, CA 94089 USA

Main Telephone: (408) 822-5200

Sales & Information: (800) TEST-911, (866) TOPAZ-4U

Customer Support: (877) TEST-HLP

Fax: (408) 822-5300

Home Page: www.mercuryinteractive.com

Customer Support: support.mercuryinteractive.com



* WRDE LI G7. 6 / 01 *