

HP Performance Manager

for the Windows[®], HP-UX, and Solaris operating systems

Software Version: 8.20

Installation, Upgrade and Migration Guide

Document Release Date: February 2009
Software Release Date: February 2009



Legal Notices

Warranty

The only warranties for HP products and services are set forth in the express warranty statements accompanying such products and services. Nothing herein should be construed as constituting an additional warranty. HP shall not be liable for technical or editorial errors or omissions contained herein.

The information contained herein is subject to change without notice.

Restricted Rights Legend

Confidential computer software. Valid license from HP required for possession, use or copying. Consistent with FAR 12.211 and 12.212, Commercial Computer Software, Computer Software Documentation, and Technical Data for Commercial Items are licensed to the U.S. Government under vendor's standard commercial license.

Copyright Notices

© Copyright 2007-2009 Hewlett-Packard Development Company, L.P.

Trademark Notices

Java™ and all Java based trademarks and logos are trademarks or registered trademarks of Sun Microsystems, Inc. in the U.S. and other countries.

Microsoft®, Windows NT®, Windows® and MS Windows® are U.S. registered trademarks of Microsoft Corporation.

Oracle® is a registered U.S. trademark of Oracle Corporation, Redwood City, California.

OSF/Motif® and Open Software Foundation® are trademarks of The Open Group in the U.S. and other countries.

Pentium® is a U.S. registered trademark of Intel Corporation.

UNIX® is a registered trademark of The Open Group.

Open Source Notices

This product includes software developed by the OpenSSL Project for use in the OpenSSL Toolkit (<http://www.openssl.org/>)

This product includes cryptographic software written by Eric Young (eay@cryptsoft.com)

This product includes software written by Tim Hudson (tjh@cryptsoft.com)

Documentation Updates

This guide's title page contains the following identifying information:

- Software Version number, which indicates the software version.
- Document Release Date, which changes each time the document is updated.
- Software Release Date, which indicates the release date of this version of the software.

To check for recent updates, or to verify that you are using the most recent edition of a document, go to:

<http://h20230.www2.hp.com/selfsolve/manuals>

This site requires that you register for an HP Passport and sign-in. To register for an HP Passport ID, go to:

<http://h20229.www2.hp.com/passport-registration.html>

Or click the **New users - please register** link on the HP Passport login page.

You will also receive updated or new editions if you subscribe to the appropriate product support service. Contact your HP sales representative for details.

Support

You can visit the HP software support web site at:

<http://support.openview.hp.com/support.jsp>

HP Software online support provides an efficient way to access interactive technical support tools. As a valued support customer, you can benefit by using the support site to:

- Search for knowledge documents of interest
- Submit and track support cases and enhancement requests
- Download software patches
- Manage support contracts
- Look up HP support contacts
- Review information about available services
- Enter into discussions with other software customers
- Research and register for software training

Most of the support areas require that you register as an HP Passport user and sign in. Many also require a support contract.

To find more information about access levels and HP Passport, go to:

http://support.openview.hp.com/new_access_levels.jsp

Contents

1	Conventions Used in this Document	7
2	Installation Overview	9
	Supported Platforms	9
	Supported configurations for Performance Manager on Solaris Zones	9
	Installation Requirements	10
	Hardware Requirements	11
	Memory Requirements	11
	Supported Browsers	11
	Java Runtime Environment (JRE) Requirements	12
	For HP-UX	12
	For Windows	12
	Installation Pre-requisites	12
	Language Options	12
3	Installation Steps	13
	Installing Performance Manager on Windows	14
	Attended Installation	14
	Unattended Installation	16
	Installing HP Performance Manager on HP-UX and Sun Solaris	16
	Attended Installation	16
	Unattended Installation	18
	Installation Results	18
	Installing the Performance Manager License Key	19
	Removing HP Performance Manager	21
	Uninstalling HP Performance Manager on Windows	21
	Attended Uninstallation	21
	Unattended Uninstallation	22
	Uninstalling HP Performance Manager on HP-UX and Solaris	22
	Removing configurations and user graph templates	22
	Removing Performance Manager Files using the Clean-up Script	22
4	Upgrading to Performance Manager 8.20	25
	Upgrading from Performance Manager version 8.10	25
	Upgrading to Performance Manager 8.20 on HP-UX and Solaris	25
	Upgrading to Performance Manager 8.20 on Windows	27
	Migrating Data from Performance Manager, version 8.10	27
	Upgrade Results	28

5	Installing Performance Manager on a Cluster Environment	29
	Cluster Terminologies	29
	Resource Group	29
	System Requirements	30
	Requirements to Install Performance Manager on a Cluster	30
	Read before Installation	30
	Installing Performance Manager on a Windows Cluster	30
	If you are installing Performance Manager on a node where HPOM is installed	30
	If you are installing Performance Manager on a node where HPOM is not installed	31
	Preparing File System for Data Directory on a HP-UX and a Solaris Node	33
	Installing Performance Manager on a HP-UX or a Solaris Cluster	33
	Upgrading to Performance Manager 8.20 Installed on a Cluster	34
	Removing HP Performance Manager	34
6	Related Documentation	35
	Site Specific Patch	41
	General Release Patch	41

1 Conventions Used in this Document

The following conventions are used in this document when referring to the location of files on the HP Performance Manager server system.



The forward slash “/” is used on UNIX systems and the backward slash “\” is used on Windows systems. The forward slash “/” is used in the examples and specifications throughout this document:

Convention	Description	On Windows Systems	On UNIX Systems
<install_dir>	The directory where Performance Manager is installed.	The default installation directory is C:\Program Files\HP\HP BTO Software. If you have the previous versions of HP Software products such as OpenView Performance Agent, OpenView Reporter or OpenView Operations installed on your system, the default Performance Manager installation directory is C:\Program Files\HP OpenView.	On HP-UX and Solaris systems, the installation directory is /opt/OV.
<data_dir>	The common data directory where data files and log files related to HP Software products are stored	On Windows system, the default data directory is C:\Documents and Settings\All Users\Application Data\HP\HP BTO Software. On Windows 2008, the default data directory is C:\ProgramData\HP\HP BTO Software. If you have the previous versions of HP Software products such as OpenView Performance Agent, OpenView Reporter or OpenView Operations installed on your system, the default data directory is C:\Program Files\HP OpenView.	On HP-UX and Solaris systems, the data directory is /var/opt/OV.
<PM_data_dir>	The directory where the Performance Manager data files are placed.	On Windows system, the default Performance Manager data directory is <data_dir>\shared\server\.	On HP-UX and Solaris systems, the Performance Manager data directory is /var/opt/OV/shared/server.

Convention	Description	On Windows Systems	On UNIX Systems
<bin_dir>	The directory where the binaries reside	<p>On a 32-bit Windows system, the bin directory is <install_dir>\bin.</p> <p>On a 64-bit Windows system the bin directory is <install_dir>\bin\win64.</p>	<p>On HP-UX and Solaris systems, the installation directory is <install_dir>/bin.</p>

2 Installation Overview

This guide instructs you on how to install Performance Manager 8.20, upgrade to Performance Manager 8.20.

This chapter provides information about the following:

- The operating systems, on which the current version of Performance manager is available.
- Hardware and software components that are required to run Performance Manager.
- The components required for each operating environment.

Before installing HP Performance Manager, make sure you go through the [Installation Requirements](#). For information about documentation on Performance Manager, see [Related Documentation](#).

If you are using HP Performance Manager with HP Operations Manager (HPOM) for Windows or UNIX, then HPOM has to be installed and configured before installing Performance Manager.

Supported Platforms

This version of Performance Manager is available on the following platforms:

Operating Systems	Architecture	Versions
Microsoft Windows	X86 and x64 (includes AMD64 and EM64T)	<ul style="list-style-type: none">• Windows 2003, Service Pack 2• Windows 2003 Server, Release 2• Windows 2008, Service Pack 1
HP-UX	IPF	<ul style="list-style-type: none">• HP-UX 11iV3
Sun Solaris	Sun SPARC	<ul style="list-style-type: none">• Solaris Sparc 10



Performance Manager version 8.20 is not supported on HP-UX PA-RISC, However Performance Manager, version 8.20 provides a command line option which allows you to migrate the data from version 8.10 to 8.20. For more information, see [Migrating Data from Performance Manager, version 8.10](#).

Supported configurations for Performance Manager on Solaris Zones

PM is supported only on Solaris 10 native zones. While installing Performance Manager on Zones, the only supported configuration for Performance Manager installation is as follows:

```
SUNW_PKG_ALLZONES = false
SUNW_PKG_HOLLOW=false
SUNW_PKG_THISZONE=true
```

Hence Performance Manager is installed only on the global or non-global zone which you selected. You need to manually perform the installation on all the zones as required. For install instructions, see [Installation Steps](#).

Installation Requirements

During installation, HP Software Installer performs the following tasks:

- Checks if your system meets the disk space requirements. For information on the disk space see [Hardware Requirements](#) on page 11.
- Checks if your system has any other HP software product installed.
- Checks if the ports are in use. If there is a conflict, it prompts you to change the port settings.
- Provides a detailed log of what is detected.
- Provides a list of components installed.



During installation, HP Installer detects if the default http, https, Shutdown port and JK2-AJP 13 ports, that is, 8081, 8444, 8006 and 8010 respectively, are in use by any other application. If any of these ports are in use by other applications, the following warning message appears.

```
INFO:Shutdown port is free
INFO:HTTP Port is free
WARNIG:HTTPS Port is in use.Change after installation
```

Though the installation of Performance Manager will be successful, you will not be able to access Performance Manager using the default port numbers. In such a case, you need to change the default http, https, shutdown and JK2-AJP 13 port settings to access Performance Manager. For more information, see *HP Performance Manager Administrator Guide*.

Hardware Requirements

A minimum 1 GB of memory is recommended for optimal performance. Installing on a slower system or one with less memory may result in slow performance.

Disk Space

The minimum disk space required to install HP Performance Manager:

Platform	Disk Space required
HP-UX IA	750 MB
Windows	300 MB
Solaris	350 MB

- During the process of installation, the installer displays the disk space requirements. But the values displayed by the installer is incorrect and much lesser than the actual disk space required. If the actual disk space on the system is less than the required amount specified here, the installation fails.

Memory Requirements

Minimum 1 GB of physical memory. If it is a cluster environment, 1 GB physical memory on each node of the cluster.

- It is recommended that you have 2 GB of physical memory for optimal performance.

Supported Browsers

The web browsers that are required to access Performance Manager are as follows:

Operating Systems	Supported Browsers
Microsoft Windows	<ul style="list-style-type: none">• Fire Fox 1.5 and 2.0• Internet Explorer 6 and 7
HP-UX	Firefox 1.5
Sun Solaris	Firefox 1.5

Java Runtime Environment (JRE) Requirements

For HP-UX

The default HP-UX configuration, specifically kernel parameters and system tuneables, do not support certain types of Java applications. Applications that typically need to be tuned manually are large, server-side Java applications that run long, have large numbers of threads, and have a large ratio of client to server connects, such as Performance Manager. To resolve this install, Java Out-of-Box (JOOB), which is a stand-alone bundle. JOOB installs startup (RC) scripts, modifies kernel parameters, rebuilds the kernel, and reboots the system. During startup, the startup scripts modify system tuneables, thus provide better out of the box behavior for Java. For more information, visit the following website:

<http://www.hp.com/products1/unix/java/java2/outofbox/index.html>

For more information on patches for the HP-UX systems, visit the following web site:

<http://www.hp.com/products1/unix/java/patches/index.html>

For Windows

Before you install Performance Manager on Windows systems, apply the following versions of patches or more recent versions of the same

Required Patches to support Java Runtime Environment (JRE) version 1.50 or higher	
Windows 2003	Windows Scripting Host version 5.6, C++ library msvcp60.dll

For information on patches for Windows systems, visit the following web site:

<http://java.sun.com/j2se/1.4.2/system-configurations.htm>

Installation Pre-requisites

Before installing Performance Manager, you must stop all processes or applications using OvJREB. For instructions to stop the process or application, see the respective product documentation for the product or the application.

Language Options

The Performance Manager 8.20 version is available in English, Japanese, Korean and Simplified Chinese languages. In localization, the user interface elements, web pages, log files, online help and user documentation are translated to a specific language.

While installing Performance Manager, the installer prompts you to select the language at the beginning of the installation. You will have the option of choosing between English and the language to which your system locale is set. In an English locale, only 'English' option appears.

For example: In Japanese locale, you will have the options: Japanese and English.

3 Installation Steps



To install Performance Manager 8.20 on your systems, you must log on as administrator (for Windows systems) or root user (for HP-UX and Solaris systems).

If OvTomcatB is installed by any other HP software product, before installing Performance Manager, make sure OvTomcatb is not configured to run in the non-privileged mode, that is without the root user privileges (HP-UX and Solaris systems) or administrative privileges (on Windows systems). If ovtomcatb is configured to run in the non-privileged mode, modify the settings to run ovtomcatb as root user or administrator.

You can install Performance Manager on the Windows or HP-UX and Solaris systems by following the procedures described in the following sections:

- [Installing Performance Manager on Windows](#) on page 14
- [Installing HP Performance Manager on HP-UX and Sun Solaris](#) on page 16



During installation, if the default http, https, Shutdown port and JK2-AJP 13 ports, that is, 8081, 8443, 8006 and 8010 respectively, are in use by any other application, the following warning message appears.

```
INFO:Shutdown port is free
INFO:HTTP Port is free
WARNIG:HTTPS Port is in use.Change after installation
```

Although the installation of Performance Manager will be successful, you will not be able to access Performance Manager using the default port numbers. You need to change the default http, https, shutdown and JK2-AJP 13 port settings to access Performance Manager. For more information, see the *HP Performance Manager Administrator Guide*.

When you upgrade OpenView Reporter 3.70 to Reporter 3.80, the Graphing Component (GC) 4.x will not be removed from your system. When you try to install Performance Manager 8.20 on the same system, the installer prompts you to uninstall GC 4.x. To uninstall GC 4.x, run the following command at the command prompt:

```
msiexec /x {90605306-2C02-4D00-ADD1-A3D0F1573EAA} /qb
```



If you uninstall GC 4.x, the on-demand reports will be removed from the Reporter user interface.

However, if your system has Operations Manager for Windows 7.5 installed and is upgraded to Operations Manager for Windows 8.10, GC 4.x will be automatically removed from your system.



While installing Performance Manager, the installer prompts you to select the language at the beginning of the installation. You will have the option of choosing between English and the language to which your system locale is set. In an English locale, only 'English' option appears.

Installing Performance Manager on Windows

You can install Performance Manager on your Windows system by using either of the following procedures:

- ▶ If you are installing Performance Manager on Windows x64, make sure that you select the installer for x64. Refer to the *Release Notes* for the corresponding part number.
 - [Attended Installation](#)
 - [Unattended Installation](#)

Attended Installation

To carry out attended installation:

- 1 Insert the HP Performance Manager CD/DVD media for Windows to the CD/DVD-ROM drive. The HP Performance Manager Installation Home page appears.
- 2 Click **Install HP Performance Manager**.

Or

If autorun is not enabled, from the CD/DVD-ROM drive, double-click **index.html**.

The HP Performance Manager Installation wizard appears.

- ▶ If you are installing Performance Manager for the first-time on your Windows system, the `ovinstallparams.ini` file containing installation parameters, is created in the system's temporary directory. During installation, the HP Software Installer checks for the `ovinstallparams.ini` file. If the installer detects the `ovinstallparams.ini` file on your system, a message asking if you want to reuse the values in the file appears.

- Click **Yes** to use the values in the configuration file as default values.
- Click **No** to overwrite the existing configuration file.

If the Installer does not find the file, the installer creates the `ovinstallparams.ini` file with default values in the temporary directory. To save the `ovinstallparams.ini` data, copy the file to an alternate location before installing other HP Software products.

If you have configured the locale of the system to one of the following languages: English, Japanese, Korean and Simplified Chinese, the installer prompts you to select the language at the beginning of the installation. You will have the option of choosing the language to which your system locale is set. If the system locale is set to any other language apart from these, the installer displays only 'English'.

- 3 On the Installation wizard, click **Next**. The License Agreement screen appears.

- 4 Read the terms of license agreement and select the 'I accept the terms of License Agreement' option. The installation wizard performs install checks.
 - If you have other HP Software products installed on your system, the installation wizard displays the application folder path and data folder path of those products as the default directories for your Performance Manager installation. If no other HP products are installed and you are installing Performance Manager for the first time, specify the folder paths for the following directories:
 - a The application folder path or directory, where you want to store the program files. The default application directory is C:\Program Files\HP\HP BTO Software.
 - b The data folder path or directory, where you want to store data files such as log files. On Windows 2003, the default data directory is C:\Documents and Settings\All Users\Application Data\HP\HP BTO Software. On Windows 2008, the default data directory is C:\ProgramData\HP\HP BTO Software.
- 5 Click **Next**. The Pre-Install Summary screen appears. This screen displays the list of components that will be installed.
- 6 Click **Install**.
 - If some components are already installed, you will see the **Force Repair of Already Installed Component Packages** check box during installation. You can use either of the following options:
 - Select the Force Repair of Already Installed Component Packages check box to reinstall the selected components, as applicable.
 - Clear the Force Repair of Already Installed Component Packages check box to prevent the reinstallation of selected components, as applicable. Clearing the check box leaves the currently installed software unchanged.
 - If the installation fails, you can roll back or quit installation. The **Roll Back** option uninstalls the components, which are already installed. Clicking **Quit** stops the installation, but does not uninstall the components installed till then. When you begin installing Performance Manager next time, the Installer prompts you to confirm if you want to resume the installation or uninstall Performance Manager.
- 7 Click the **Details** tab and expand the components tree to view the list of components shared among Performance Manager and other HP products.
- 8 To view the log file on your system, click **View Log Files**.
- 9 Click **Done** to complete the installation. The Performance Manager icon will be created on your Desktop. To start Performance Manager, double-click the Performance Manager icon. The HP Performance Manager Home page appears.
 - If the system requires to be restarted, the message, 'You may need to restart your system for the configuration changes made to the system to take effect. Would you like to quit this installation?' appears. It is recommended that you restart your system after installation, though it is not mandatory.

Unattended Installation

- ▶ In the unattended installation procedure, the installer uses the values in the `ovinstallparams.ini` file as default values, if it is present in the system's temporary directory. Make sure this file is available before you start installation. If you want to make any changes to the file, modify it before you start installation.

To carry out unattended installation:

- 1 Open the Windows command prompt and type the name of the drive, where the `HPOvPM_8.20.000_setup.exe` file is located, as shown below:

```
<drive>:
```

In this instance, `drive` is the CD/DVD-ROM drive containing the Performance Manager files.

- 2 If your system locale is set to English, enter the following syntax at the command prompt:

```
HPOvPM_8.20.000_setup.exe -i silent
```

If you have configured the locale of the system to a language other than English, enter the following syntax at the command prompt:

```
HPOvPM_8.20.000_setup.exe -i
```

- ▶ The installation process happens in the background. You can open the **Windows Task Manager** -> **Processes** and check for `HPOvPM_8.20.000_setup.exe` listed. You can also check the log file available in the `<temp_directory>/HPOvInstaller` directory to verify if the installation is complete.

In this instance, the `temp_directory` refers to the system's temporary directory.

Installing HP Performance Manager on HP-UX and Sun Solaris

You can install HP Performance Manager on your HP-UX or Solaris system by using any of the following procedures:

- [Attended Installation](#)
- [Unattended Installation](#)

Attended Installation

You can install HP Performance Manager on your HP-UX or Solaris systems through Graphical and command line interfaces.

Installing HP Performance Manager through Graphical Interface

To install Performance Manager using X 11 interface, perform the following tasks:

- 1 Login as a root user.
- 2 Place the HP Performance Manager 8.20 CD/DVD-ROM media in the CD/DVD drive. If necessary, mount the CD/DVD-ROM.
- 3 To start installation, if you want to use the X11 terminal window, export the `DISPLAY` variable to point to an X11 terminal. Type the following:

<CD/DVD-ROM> HPOvPM_8.20.000_setup.bin

The HP Performance Manager Installation wizard appears. This window displays an introductory message.

▶ If you are installing HP Performance Manager for the first-time on your HP-UX or Solaris system, the `ovinstallparams.ini` file containing the installation parameters is created in the system's temporary directory. During installation, HP Installer checks for the `ovinstallparams.ini` file. If HP Installer detects the `ovinstallparams.ini` file on your system, a message asking if you want to reuse the values in the file appears.

- Click **Yes** to use the values in the configuration file as default values.
- Click **No** to overwrite the existing configuration file.

If HP Installer does not find the file, the system creates the `ovinstallparams.ini` file with default values in the temporary directory. To save the `ovinstallparams.ini` data, copy the file to an alternate location, before installing other HP products.

If you have configured the locale of the system to one of the following languages: English, Japanese, Korean and Simplified Chinese, the installer prompts you to select the language at the beginning of the installation. You will have the option of choosing the language to which your system locale is set. If the system locale is set to any other language apart from these, the installer displays only 'English'.

- 4 On the HP Performance Manager Installation wizard, click **Next**. The License Agreement screen appears.
- 5 Read the terms of license agreement. To continue with installation, select **I accept the terms of License Agreement** option. The installation wizard performs install checks.
- 6 Click **Next**. The Pre-Install Summary screen appears. The screen displays the list of components that will be installed.
- 7 Click **Install**.


▶ While installing, you might see the **Force Repair of Already Installed Component Packages** checkbox. You can use either of the following options:

- Select the **Force Repair of Already Installed Component Packages** check box to reinstall the selected components, as applicable.
- Clear the **Force Repair of Already Installed Component Packages** check box to prevent reinstallation of the selected HP Software components, as applicable. Clearing the checkbox does not change the currently installed software components.

▶ If the installation fails, you can roll back or quit installation. The **Roll Back** option uninstalls the components, which are already installed. Clicking **Quit** stops the installation, but does not uninstall the components installed till then. When you begin installing Performance Manager next time, the Installer prompts you to confirm if you want to resume the installation or uninstall Performance Manager.

- 8 Click the **Details** tab and expand the components tree to view the list of components.
- 9 To view the log file on your system, click **View Log Files**.

- 10 Click **Done** to complete the installation.

 If the system requires to be restarted, the message, ‘You may need to restart your system for the configuration changes made to the system to take effect. Would you like to quit this installation?’ appears. It is recommended that you restart your system after installation, though it is not mandatory.

Installing HP Performance Manager through Command Line Interface

To install Performance Manager through Command Line interface:

- 1 Login as a `root` user.
- 2 Insert the HP Performance Manager 8.20 CD/DVD-ROM media into the CD/DVD drive. If necessary, mount the CD/DVD-ROM.
- 3 Run the following command:

— If you are installing Performance Manager on a stand-alone system:

```
<CD/DVDrom_mount>/HPOvPM_8.20.000_setup.bin -i console
```

If you have configured the locale of the system to one of the following languages: English, Japanese, Korean and Simplified Chinese, the installer prompts you to select the language at the beginning of the installation. You will have the option of choosing the language to which your system locale is set. If the system locale is set to any other language apart from these, the installer displays only ‘English’.

- 4 When the prompt, ‘I accept the terms of the License Agreement’ for the License information appears, type `Y` to accept the terms and continue installation. The installer checks all the Install Requirements.
- 5 Click **Enter** to continue. The pre-installation summary appears.
- 6 Click **Enter** to continue.


When the installation is complete, you will receive a message which states that the installation was completed successfully.

Unattended Installation

To carry out unattended installation:

- 1 Login as a `root` user.
- 2 Insert the HP Performance Manager 8.20 CD/DVD-ROM media into the CD/DVD drive. If necessary, mount the CD/DVD-ROM.
- 3 Type the following syntax at the command prompt:

```
HPOvPM_8.20.000_setup.bin -i silent.
```

 If the installer finds a working installation of HP Performance Manager, it will uninstall HP Performance Manager when you run the `-i silent` command. If not, it will install Performance Manager.

- 4 To verify the installation, check the log files.

Installation Results

On successful installation:

- On the HP-UX and Solaris systems, the application directory and data directory paths are displayed.
- On the Windows systems, the `HP\HP BTO Software\Performance Manager` folder is added to the **Start > Programs** menu on the Windows systems.
- Post Install related log files are available in the `<temp_directory>/HPOvInstaller` directories. The log files also contain appropriate messages. The format of the file name of log file is `PerfUtil-MM-dd-yyyy.log.0`.

In this instance, MM indicates the month, dd indicates the day, and yyyy indicates the year. The file name indicates the time stamp when the last install was performed.

The HP Performance Manager documentation is available in the install directory, the location specified for program files. See [Chapter 6, Related Documentation](#), for a comprehensive list of documentation on HP Performance Manager.



After you install, migrate or upgrade Performance Manager to the latest version, the files `OVPConfig.ini` and `OVPUsers.xml` includes one or more of the following messages as appropriate:

- If you have installed Performance Manager, version 8.20 for the first time the message will be: `Performance Manager Version 08.20.000`.
- If you have migrated data from Performance Manager, version 8.10 of Performance Manager: `Migrated to Performance Manager Version 08.20.000`.
- If you have upgraded from Performance Manager, version 8.10: `Upgraded to Performance Manager Version 08.20.000`.

Installing the Performance Manager License Key

To use Performance Manager, you require a license key. When you install Performance Manager and use it for the first time, a 60-days trial license (also known as Instant On license) is granted. Within this 60-day period, you must obtain a permanent license key or a trial evaluation extension to continue using the product.



If you are using Performance Manager, version 8.10 with a 60-day trial license (also known as Instant-on license) and if you upgrade to Performance Manager, version 8.20 before the trial license expires, the version 8.20 will be installed with a new trial license for a period of 60 days. For example, if you are using Performance Manager, version 8.10 with a 60-day trial license and after 15 days you upgrade to version 8.20, Performance Manager, version 8.20 will be installed with a new 60-day trial license.

To obtain a permanent license, you can use one of the following options

Request a permanent license or an extension of the trial license from the website www.webware.hp.com. The license key is delivered to you by email or internet connection.

To verify and install the license key, follow these steps

- 1 Run the following command at the command prompt:

```
<bin_dir>\ovpm license
```

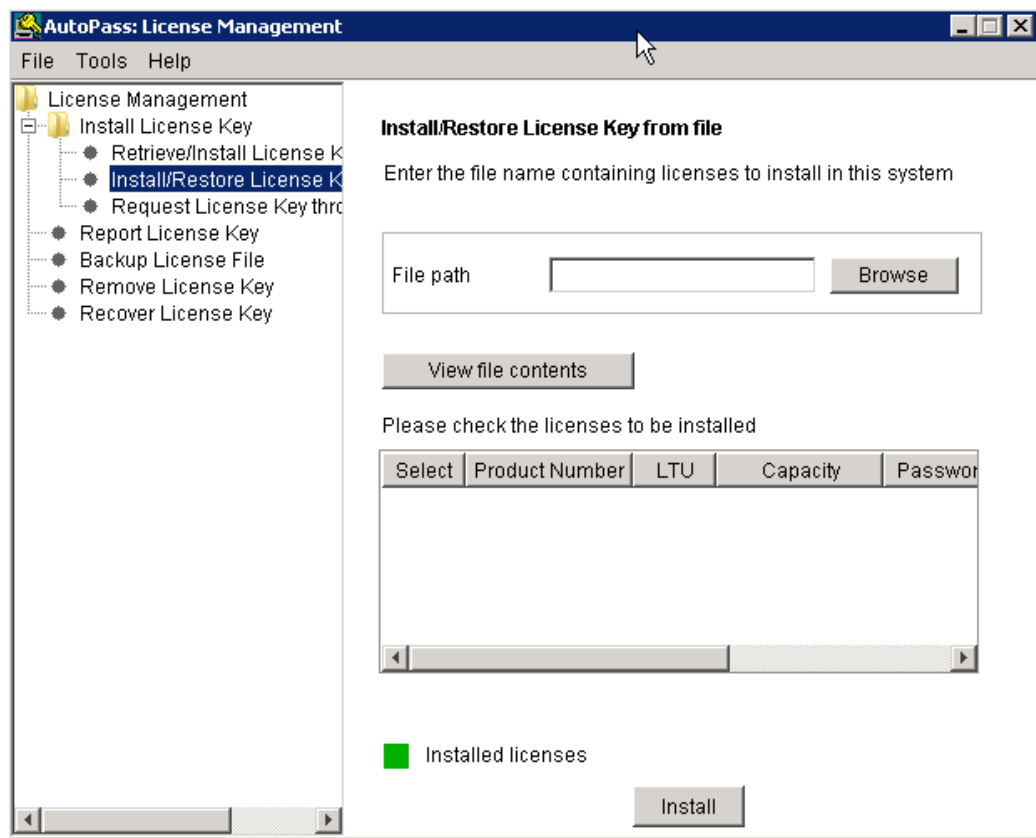
The status of your Performance Manager license is displayed and the “License Command>” command line prompt appears.

- ▶ On HP-UX and Solaris systems, export the **DISPLAY** variable to direct the AutoPass GUI to the proper display window, before running the **ovpm license** command.

If you are running Performance Manager with a trial license, the message “Instant On: Yes”, license expiration date and the number of days left for the expiration of license appear.

If you have installed the permanent product license, the message “HP Performance Manager has a permanent license” appears.

- 2 Run the command **gui** at the command prompt `License Command>`. The **AutoPass: License Management** user interface appears.



- 3 The **AutoPass: License Management** window displays the following options. Select the option which suits your requirement:

- Install License Key
 - Retrieve/Install License Key - Use this option to retrieve license keys for your HP software product using an Internet connection.
 - Install/Restore License Key from file - Use this option to install a license key from a ASCII text file.
 - Request License Key through Email/Fax - Use this option to request for a license key using the HP Order Number.

- 4 Click any of the options and continue with the steps that follow. For more information, see the *HP Autopass Online Help*.

Alternatively, if you have the license key in a ASCII text file, you can run the following commands line options to install the same:

- 1 Enter the following command:

```
<bin_dir>\ovpm license
```

The license command prompt appears

- 2 Run the following command:

```
License Command> install
```

- 3 A message asking you to enter the input file name appears.

- 4 Enter the file name of the text file with the complete path.

You will receive a confirmation message once the license is installed.



Following are the other options available from the **Autopass: License Management** user interface. For more information, see the *HP Autopass Online Help*:

- Report License Key - Use this option to view the list of product licenses installed.
- Backup License Key - Use this option to backup license key in a file.
- Remove License Key - Use this option to remove installed license.
- Recover License Key - Use this option to add licenses which you removed using the 'Remove License Key' option.

Removing HP Performance Manager

You can remove Performance Manager installed on your Windows or HP-UX or Solaris systems by using the procedures described in the following sections:

- [Uninstalling HP Performance Manager on Windows](#)
- [Uninstalling HP Performance Manager on HP-UX and Solaris](#)

Uninstalling HP Performance Manager on Windows

You can uninstall HP Performance Manager on your Windows system by using any of the following procedures:

- Attended Uninstallation
- Unattended Uninstallation

Attended Uninstallation

To uninstall Performance Manager using the Uninstallation wizard,

- 1 Stop HP Performance Manager, if it is running.
- 2 Go to **Start > Settings > Control Panel**.

- 3 Double-click **Add or Remove Programs**.
- 4 Select HP Performance Manager.
- 5 Click **Change/Remove** to uninstall. The HP Performance Manager Uninstallation wizard appears.
- 6 Select the **Uninstall** option.
- 7 Click **Next**. The Pre-uninstall summary screen appears.
- 8 Click **Uninstall**. The wizard starts uninstalling Performance Manager.
- 9 Click **Done** to complete uninstallation.

Unattended Uninstallation

To uninstall Performance Manager through command prompt:

- 1 Open the Windows command prompt and type the name of the drive, where the HP Performance Manager `HPOvPM_8.20.000_setup.exe` file is located, as shown below:

<drive>:

In this instance, *drive* is the location of Performance Manager files.

- 2 Run the following command.

```
<drive>/HPOvPM_8.20.000_setup.exe -i silent
```

Uninstalling HP Performance Manager on HP-UX and Solaris

- 1 Log on as root user.
- 2 Change to the directory `/opt/OV/Uninstall/HPOvPM`.
- 3 Run the uninstallation:
 - To use an X11 interface, export the `DISPLAY` variable to point to an X11 terminal if necessary. Then run the command:


```
./setup.bin
```
 - To use a command line interface, run the command:


```
./setup.bin -i console
```
- 4 Select Uninstall.

Removing configurations and user graph templates

Removing Performance Manager does not remove configurations or user graph templates. You need to manually remove the files from the data directory.

Removing Performance Manager Files using the Clean-up Script

After removing Performance Manager components, you must run the following clean-up script. This script is available in the `<install_dir>\support`:

`clnup_ovpm.bat` for Windows

`clnup_ovpm.sh` for UNIX

The clean-up script removes the following files from `<PM_data_dir>\conf\perf`:

- OVPMconfig.ini
- OVPMUsers.xml
- OVPMSystems.xml
- ovpm.tcf
- VPI_GraphsUserFavorites.txt
- OVPMReportTemplate.htm
- Any folder which starts with the name "**VPI_**".

4 Upgrading to Performance Manager 8.20

If you have HPOM installed on your system, before upgrading to PM version 8.20, make sure you have HPOM for windows, version 8.10 or higher and HPOM for UNIX, version 8.31 or higher on your system.

- ▶ 1 In case you have modified the contents in the `<install_dir>/newconfig` directory, it is recommended that you save the `VPI_Graphs` template files available in the `<install_dir>/newconfig` directory to another location before upgrading to Performance Manager 8.20, as HP Installer replaces these files while upgrading.
- 2 You cannot upgrade from earlier versions of Performance Manager (5.X, 6.X, and 8.00) to version 8.20 directly. If you want to upgrade from earlier versions of Performance Manager to version 8.20, you must first upgrade to version 8.10 and then upgrade to version 8.20. For instructions, refer to the *HP Performance Manager Installation and Upgrade Guide, version 8.10*.
- 3 If you are using Performance Manager, version 8.10 with a 60-day trial license (also known as Instant-on license) and if you upgrade to Performance Manager, version 8.20 before the trial license expires, the version 8.20 will be installed with a new trial license for a period of 60 days. For example, if you are using Performance Manager, version 8.10 with a 60-day trial license and after 15 days you upgrade to version 8.20, Performance Manager, version 8.20 will be installed with a new 60-day trial license. For more information on licensing for Performance Manager, see [Installing the Performance Manager License Key](#).

Upgrading from Performance Manager version 8.10

HP Installer detects the presence of Performance Manager 8.10 on your system, it will upgrade to Performance Manager 8.20.

- [Upgrading to Performance Manager 8.20 on HP-UX and Solaris](#)
- [Upgrading to Performance Manager 8.20 on Windows](#)

Upgrading to Performance Manager 8.20 on HP-UX and Solaris

To upgrade to Performance Manager through the command line interface:

- 1 Login as a `root` user.
- 2 Insert the HP Performance Manager 8.20 CD/DVD-ROM into the CD/DVD drive. If necessary, mount the CD/DVD-ROM.
- 3 Run the following command:

```
<CD/DVDrom_mount>/HPOvPM_8.20.000_setup.bin -i console
```

- 4 When the installer prompts you to continue with installation, press Enter. The prompt, 'I accept the terms of the License Agreement' for the License information appears.
- 5 Type **Y** to accept the terms and continue installation. The installer checks if your system meets the installation requirements.
- 6 Press **Enter** to continue with installation. The pre-installation summary details such as the name and version of the application being installed, application directory and data directory paths will be displayed.
- 7 Press **Enter** to continue with installation.

To upgrade to Performance Manager through X11 interface:

- 1 Login as a `root` user.
- 2 Insert the HP Performance Manager 8.20 CD/DVD-ROM into the CD/DVD drive. If necessary, mount the CD/DVD-ROM.
- 3 Export the `DISPLAY` variable to point to a X11 terminal.
- 4 Run the following command:

```
<CD/DVDrom_mount>/HPOvPM_8.20.000_setup.bin
```

The HP Performance Manager Installation wizard appears, click **Next**. The License Agreement screen appears.
- 5 Read the terms of license agreement. To continue with installation, select **I accept the terms of License Agreement option**.
- 6 Click **Next**. The Pre-Install Summary screen appears. The screen displays the list of components that will be upgraded.
- 7 Click **Upgrade**.
 - ▶ While installing, you might see the **Force Repair of Already Installed Component Packages** check box. You can use either of the following options:
 - Select the Force Repair of Already Installed Component Packages check box to reinstall the selected components, as applicable.
 - Clear the Force Repair of Already Installed Component Packages check box to prevent reinstallation of the selected HP Software components, as applicable. Clearing the checkbox does not change the currently installed software components.
 - ▶ If the upgrade fails, you can roll back or quit upgrade. The **Roll Back** option uninstalls the components, which are already installed. Clicking **Quit** stops the upgrade, but does not uninstall the components installed till then. When you begin upgrading Performance Manager next time, the Installer prompts you to confirm if you want to resume the upgrade or uninstall Performance Manager.
- 8 Click the **Details** tab and expand the components tree to view the list of components.
- 9 To view the log file on your system, click **View Log Files**.
- 10 Click **Done** to complete the installation.

Upgrading to Performance Manager 8.20 on Windows

To upgrade to Performance Manager 8.20:

- 1 Insert the HP Performance Manager 8.20 CD/DVD for Windows on the CD/DVD-ROM drive. The HP Performance Manager Installation Home page appears.
- 2 Click **Install HP Performance Manager**.

Or

On the CD/DVD-ROM drive, double-click **HPOvPM_8.20.000_setup.exe**. The HP Performance Manager Installation wizard that displays the location of the media files and log files appears.

- 3 Click **Next**. The License Agreement screen appears.
- 4 Read the terms of license agreement and select the 'I accept the terms of License Agreement' option.
- 5 Click **Next**. The Installer checks for the install requirements. When the install requirements check is complete, click **Next**. The Pre-Install Summary screen appears. This screen displays the list of components that will be installed with Performance Manager 8.10.
- 6 Click **Upgrade**.
- 7 Click the **Details** tab and expand the components tree to view the list of components.

Click **Done** to complete the upgrade process. The Performance Manager version 8.10 will be removed from your system and the Performance Manager version 8.20 desktop icon will be created. To start Performance Manager, double-click the Performance Manager icon. The HP Performance Manager Home page appears.



After you upgrade to Performance Manager 8.20, the node permissions will not be carried forward. This is because in version 8.20, you can associate node groups with customers and have multi-level node groups. You cannot associate nodes with customers.

However the node permissions from Performance Manager, version 8.10 will be saved in a file `PM_Data_Dir\conf\perf\OVPMUsers.xml.bkp`. The Performance Manager administrator has to manually configure the node permissions as required. For steps to configure the node groups and customers, refer to the *HP Performance Manager Online Help* for more information.

Migrating Data from Performance Manager, version 8.10

Performance Manager provides a command line option which allows you to migrate the data from Performance Manager, version 8.10 installed on any of the supported platforms to Performance Manager, version 8.20 on any of the supported platforms. To migrate the data, perform the following tasks:

- 1 From the system where Performance Manager, version 8.10 is installed, browse to the location `<PM_data_dir>/conf` and copy the folder 'Perf' to the same location on the system where Performance Manager, version 8.20 is installed.
- 2 On the system where Performance Manager, version 8.20 is installed, run the following command:

```
ovpm migrate
```

All the data from Performance Manager 8.10 is migrated to the system where Performance Manager, version 8.20 is installed.

Migrate related log files are available in the `<temp_directory>/HPOvInstaller` directories. The log files also contain appropriate messages. The format of the file name of log file is `PerfUtil-MM-dd-yyyy.log.0`.

Example: Performance Manager 8.20 is not supported on PA-RISC. You can use the `ovpm migrate` command to migrate data from a HP-UX PA-RISC system where Performance Manager, version 8.10 is installed.



After you migrate to Performance Manager 8.20, the node permissions will not be carried forward. This is because in version 8.20, you can associate node groups with customers and have multi-level node groups. You cannot associate nodes with customers.

However the node permissions from 8.10 will be saved in a file `OVPUsers.xml.bkp`. The Performance Manager administrator has to manually configure the node permissions as required. For steps to configure the node groups and customers, refer to the *HP Performance Manager Online Help* for more information.

Upgrade Results

On successful upgrade:

- On the HP-UX and Solaris systems, the application directory and data directory paths are displayed.
- On the Windows systems, the `HP\HP BTO Software\Performance Manager` folder is added to the **Start > Programs** menu on the Windows systems.
- Post upgrade related log files are available in the `<temp_directory>/HPOvInstaller` directories. The log files also contain appropriate messages. The format of the file name of log file is `PerfUtil-MM-dd-yyyy.log.0`.

In this instance, MM indicates the month, dd indicates the day, and yyyy indicates the year. The file name indicates the time stamp when the last upgrade was performed.

The HP Performance Manager documentation is available in the install directory, the location specified for program files. See [Chapter 6, Related Documentation](#), for a comprehensive list of documentation on HP Performance Manager.



After you install, migrate or upgrade Performance Manager to the latest version, the files `OVPconfig.ini` and `OVPUsers.xml` includes one or more of the following messages as appropriate:

- If you have installed Performance Manager, version 8.20 for the first time the message will be: Performance Manager Version 08.20.000.
- If you have migrated data from Performance Manager, version 8.10 of Performance Manager: Migrated to Performance Manager Version 08.20.000.
- If you have upgraded from Performance Manager, version 8.10: Upgraded to Performance Manager Version 08.20.000.

5 Installing Performance Manager on a Cluster Environment

You can install Performance Manager on Windows, HP-UX or Solaris cluster environments by following the procedures described in the following sections. The HP Performance Manager installation wizard does not detect a cluster environment:

- [Installing Performance Manager on a Windows Cluster](#) on page 30
- [Installing Performance Manager on a HP-UX or a Solaris Cluster](#) on page 33

If you are using HP Performance Manager with HP Operations Manager (HPOM) for Windows or UNIX, then HPOM has to be installed and configured before installing Performance Manager.

Cluster Terminologies

Resource Group

In cluster environments such as VERITAS Cluster, Sun Cluster or MC/ServiceGuard, applications are represented as compounds of resources. The resources constitute a Resource Group, which represents an application running in a cluster environment.

The terminologies for a resource group are different in various cluster environment, see [Table 1](#) for a list of terms on different cluster environment. Instead of cluster specific terms, High Availability (HA) Resource Group is used in this document as a generic term for a resource group in a cluster environment. Performance Manager is cluster-aware and requires a dedicated resource group.

Table 1 Resource Group in cluster environments

Cluster Environment	Abbreviation	HA Resource Group Represented As...
MC ServiceGuard	MC/SG	Package
VERITAS Cluster Server	VCS	Service Group
Sun Cluster	SC	Resource Group
Microsoft Server Cluster	MSCS	Resource Group



- If HPOM is installed on the cluster system, Performance Manager has to be configured on the same resource group.
- If Performance Manager and Reporter are installed on your system, then the you can either configure the same resource group or configure different resource groups for both Performance Manager and Reporter.

System Requirements

Before installing Performance Manager, make sure that the [Installation Requirements](#) on page 10 are met on each node of the cluster.

Requirements to Install Performance Manager on a Cluster

To setup Performance Manager on a cluster, make sure the following resources are available:

- Minimum two node server cluster
- Shared disk to store the PM configuration files
- At least one dedicated static IP address resolving to the cluster's virtual server name

Read before Installation

If you do not have HP Operations Manager installed on the system, before installing Performance Manager on a cluster you need to prepare your file system for data directory. For instructions, refer to the procedures described in the following sections:

- [Preparing File System for Data Directory on a Windows Node](#) on page 31.
- [Preparing File System for Data Directory on a HP-UX and a Solaris Node](#) on page 33

If you have HP Operations Manager installed on a cluster, you need not prepare the file system and you can proceed with the installation. For instructions, refer to the procedures described in the following sections:

- [Installing Performance Manager on a Windows Cluster](#) on page 30
- [Installing Performance Manager on a HP-UX or a Solaris Cluster](#) on page 33



Do not start the installation on multiple nodes on the same cluster simultaneously. You must install Performance Manager on the one node first, after you complete the installation on one node, you can start the installation on the next node.

Installing Performance Manager on a Windows Cluster

To run Performance Manager on a cluster, Performance Manager must be installed on all the nodes of the cluster. To install Performance Manager 8.10 on a cluster system, perform the following tasks:

If you are installing Performance Manager on a node where HPOM is installed

- 1 For instructions to install, see [Installing Performance Manager on Windows](#) on page 14. Do not make any configuration changes.
- 2 Go to [step 9](#).

If you are installing Performance Manager on a node where HPOM is not installed

You need to prepare the file system. For instructions, see [Preparing File System for Data Directory on a Windows Node](#) on page 31. After you prepare the file system, you can proceed with the installation. For installation instructions, see [Installation Steps After Preparation Of File System on Windows](#).

Preparing File System for Data Directory on a Windows Node

- 1 Identify the location on the cluster's shared drive where you want the <PM_data_dir>.
- 2 Create the directory structure. For example: If you want R:\HP as you data directory, then create the complete directory structure on the shared cluster drive, R:\HP\<data_dir>.

Installation Steps After Preparation Of File System on Windows

After you prepare the file system for data directory, to install Performance Manager, perform the following tasks:

- 1 Type the following syntax on the command prompt:

```
HPovPM_8.10.00_setup.exe -Dpmdatadir=<PM_data_dir>
```

The HP Performance Manager Installation wizard appears.



If you are installing Performance Manager for the first-time on your Windows system, the `ovinstallparams.ini` file containing installation parameters, is created in the system's temporary directory. During installation, the HP Software Installer checks for the `ovinstallparams.ini` file. If the installer detects the `ovinstallparams.ini` file on your system, a message asking if you want to reuse the values in the file appears.

- Click **Yes** to use the values in the configuration file as default values.
- Click **No** to overwrite the existing configuration file.

If the Installer does not find the file, the installer creates the `ovinstallparams.ini` file with default values in the temporary directory. To save the `ovinstallparams.ini` data, copy the file to an alternate location before installing other HP Software products.

If you have configured the locale of the system to one of the following languages: English, Japanese, Korean and Simplified Chinese, the installer prompts you to select the language at the beginning of the installation. You will have the option of choosing the language to which your system locale is set. If the system locale is set to any other language apart from these, the installer displays only 'English'.

- 2 On the Installation wizard, click **Next**. The License Agreement screen appears.

- 3 Read the terms of license agreement and select the 'I accept the terms of License Agreement' option.

➤ If you have other HP Software products installed on your system, the installation wizard displays the application folder path and data folder path of those products as the default directories for your Performance Manager installation. If no other HP products are installed and you are installing Performance Manager for the first time, specify the folder paths for the following directories:

- a The application folder path or directory, where you want to store the program files. The default application directory is C:\Program Files\HP\HP BTO Software.
- b The data folder path or directory, where you want to store data files such as log files. On Windows 2003, the default data directory is C:\Documents and Settings\All Users\Application Data\HP\HP BTO Software. On Windows 2008, the default data directory is C:\ProgramData\HP\HP BTO Software.

- 4 Click **Next**. The Pre-Install Summary screen appears. This screen displays the list of components that will be installed.

- 5 Click **Install**.

➤ If some components are already installed, you will see the **Force Repair of Already Installed Component Packages** check box during installation. You can use either of the following options:

- Select the Force Repair of Already Installed Component Packages check box to reinstall the selected components, as applicable.
- Clear the Force Repair of Already Installed Component Packages check box to prevent the reinstallation of selected components, as applicable. Clearing the check box leaves the currently installed software unchanged.

➤ If the installation fails, you can roll back or quit installation. The **Roll Back** option uninstalls the components, which are already installed. Clicking **Quit** stops the installation, but does not uninstall the components installed till then. When you begin installing Performance Manager next time, the Installer prompts you to confirm if you want to resume the installation or uninstall Performance Manager.

- 6 Click the **Details** tab and expand the components tree to view the list of components shared among Performance Manager and other HP products.

- 7 To view the log file on your system, click **View Log Files**.

- 8 Click **Done** to complete the installation. The Performance Manager icon will be created on your Desktop. To start Performance Manager, double-click the Performance Manager icon. The HP Performance Manager Home page appears.

➤ If the system requires to be restarted, the message, 'You may need to restart your system for the configuration changes made to the system to take effect. Would you like to quit this installation?' appears. It is recommended that you restart your system after installation, though it is not mandatory.

- 9 To verify the installation, see [Installation Results](#) on page 18.

- 10 Make sure that the Performance Manager home page is accessible through a browser. You need to specify the name or IP address of the node in the url.

Example: **http://xyz.abc.hp.com:8081/OVPM**

- 11 Stop Performance Manager, by typing the following syntax at the command prompt:

```
ovc -stop ovtomcatB
```

- 12 Move the resource group which contains the shared drive to the next node.
- 13 Verify if the shared drive is accessible from this node of the cluster.
- 14 Repeat [step 1](#) to [step 11](#) on all nodes of the cluster.
- 15 After you install Performance Manager, start Performance Manager on all the nodes by typing the following syntax at the command prompt:

```
ovc -start ovtomcatB
```

- 16 After installing Performance Manager on all the nodes, make sure that the Performance Manager home page is accessible through a browser. You need to specify the virtual name or virtual IP address of the cluster in the url:

Syntax:

```
http://<clustername>:8081/OVPM
```

```
http://<clusterIPaddress>:8081/OVPM
```

If you are using the Performance Manager icon on the desktop to open Performance Manager, you need to modify the shortcut to point to the cluster name or IP address. By default the shortcut will point to the name or IP address of the physical node.



If you are configuring Performance Manager, make sure the configuration changes are consistent across all the nodes of the cluster. For information, see *HP Performance Manager Administrator Guide*.

Preparing File System for Data Directory on a HP-UX and a Solaris Node

To prepare the file system for the data directory, follow these steps:

- 1 Create the directories `<OVDataDir>/shared/server`. The default data directory (*OVDataDir*) is: `/var/opt/OV/conf/perf`. You cannot specify an alternate directory.
- 2 Prepare mount points for the shared drive:

```
— /var/opt/OV/shared/server
```

Make sure that the mount has 'write' permissions for a `root` user. After you mount the file system, you can proceed with the installation.

Installing Performance Manager on a HP-UX or a Solaris Cluster

To run Performance Manager on a cluster, Performance Manager must be installed on all nodes of a cluster. To install Performance Manager 8.10 on a cluster system, perform the following tasks:

- 1 If you are installing Performance Manager on a node where HPOM is installed, go to [step 2](#). If you are installing Performance Manager on a node where HPOM is not installed, you need to prepare the file system for data directory. For instructions on preparing a file system, refer to the section [Preparing File System for Data Directory on a HP-UX and a Solaris Node](#) on page 33.

- 2 Install Performance Manager 8.10 on this node. For installation instructions, see [Installing HP Performance Manager on HP-UX and Sun Solaris](#) on page 16. Do not make any configuration changes.
- 3 To verify the installation on all the nodes, see [Installation Results](#) on page 18.
- 4 Make sure that the Performance Manager 8 home page is accessible through a browser. You need to specify the name or IP address of the primary node of the cluster in the url.
Example: **http://xyz.abc.hp.com:8081/OVPM**
- 5 Stop Performance Manager 8.10, by typing the following syntax at the command prompt:
ovc -stop ovtomcatB
- 6 Move the resource group which contains the shared disk to the next node.
- 7 Verify if the shared drive is accessible from this node of the cluster.
- 8 Repeat [step 1](#) to [step 5](#) on all nodes of the cluster.
- 9 After you install Performance Manager on all the nodes, start Performance Manager on all the nodes by typing the following syntax at the command prompt:
ovc -start ovtomcatB
- 10 After installing Performance Manager on all the nodes, make sure that the Performance Manager home page is accessible through a browser. You need to specify the virtual name or virtual IP address of the cluster in the url:
http://<clustername>:8081/OVPM
http://<clusterIPaddress>:8081/OVPM



If you are configuring Performance Manager, make sure the configuration changes are consistent across all the nodes of the cluster. For information, see *HP Performance Manager Administrator Guide*.

Upgrading to Performance Manager 8.20 Installed on a Cluster

You can upgrade Performance Manager 8.10 installed on all the nodes, one node at a time. For instruction, refer to the procedures described in the section: [Upgrading from Performance Manager version 8.10](#).

Removing HP Performance Manager

For instructions to uninstall Performance Manager, see [Removing HP Performance Manager](#) on page 21. While uninstalling Performance Manager from the last node of the cluster, make sure that the shared drive is active on the last node.

6 Related Documentation

Information on Performance Manager is available from several sources. The context-sensitive help system is the primary source of information on how to use Performance Manager. When you install Performance Manager on your system, the Installation Guide and Release Notes will also be installed.

Document	Location	Purpose
Context-Sensitive Online Help	<ul style="list-style-type: none">• Available on Performance Manager Help drop-down menu• Context-sensitive help pages are available for the respective screens and can be viewed by clicking the Help buttons on screens and dialog boxes.	To guide the user to perform the following tasks: <ul style="list-style-type: none">• Drawing various types of graphs using out-of-the-box templates• Designing instance comparison, system comparison and multi-source graphs• Editing an existing graph definition and saving it as a user-defined graph• Drilling down to view data at the required granularity• Adding graphs to the Favorites list• Deleting Graphs
Tutorials	Performance Manager Help drop-down menu	To provide step-by-step instructions on configuring and performing various tasks in Performance Manager.
Administration Guide		To provide information on configuring data sources, secure communication, using batch parameters, managing customers, users, logons, nodes and so on.
Release Notes		To provide information on Performance Manager 8.20 release.

A Components and Patches

The components and patches available with installation package of various versions of Performance Manager are listed in the following table:

Product Version / Patches	Components/ Component Dependencies/ Patches
6.0	<ul style="list-style-type: none"> • HPOvBbc-05.20.050 • HPOvCtrl-01.50.230 • HPOvJxpl-02.61.020 • HPOvJPacc-10.00.132 • HPOvJbbc-05.20.050 • HPOvJdkA-01.04.220 • HPOvJsec-02.20.040 • HPOvXpl-02.61.020 • HPOvPacc-10.00.131 • HPOvSecCo-02.20.040 • HPOvTomcatA-05.00.285 • HPOvLic-04.32.000 • HPOvLicJ-01.04.00
6.01.000 and 6.00.040 (Patch)	<ul style="list-style-type: none"> • HPOvBbc-06.00.051 • HPOvCtrl-01.50.230 • HPOvJxpl-02.61.082 • HPOvJPacc-10.00.180 • HPOvJbbc-06.00.051 • HPOvJdkA-01.04.220 • HPOvJsec-02.20.040 • HPOvXpl-02.61.082 • HPOvPacc-10.00.180 • HPOvSecCo-02.20.040 • HPOvTomcatA-05.00.285 • HPOvLic-04.32.000 • HPOvLicJ-01.04.00 • HPOvLcja-02.10.000 • HPOvLcko-02.10.000 • HPOvLczS-02.10.000

Product Version / Patches	Components/ Component Dependencies/ Patches
06.01.060 (Patch)	<ul style="list-style-type: none"> • HPOvBbc-06.00.060 • HPOvCtrl-01.50.230 • HPOvJxpl-02.61.120 • HPOvJPacc-10.00.251 • HPOvJbbc-06.00.060 • HPOvJdkA-01.04.230 • HPOvJsec-02.20.100 • HPOvXpl-02.61.120 • HPOvPacc-10.00.251 • HPOvSecCo-02.20.100 • HPOvTomcatA-05.00.290 • HPOvLic-04.32.000 • HPOvLicJ-01.04.00 • HPOvLcja-02.10.000 • HPOvLcko-02.10.000 • HPOvLczS-02.10.000
8.00.000	<ul style="list-style-type: none"> • HPOvXpl (Windows)-06.00.076 • HPOvJxpl-06.00.076 • HPOvBbc-06.10.060 • HPOvJbbc-06.10.060 • HPOvJPacc-10.50.050 • HPOvJsec-6.00.050 • HPOvSecCo-6.00.050 • HPOvTomcatB-05.05.230 • HPOvJREB-1.05.005 • HPOvJdkB-1.05.005 • HPOvSecCC-06.00.050 • HPOvLic-05.50.052 (Windows) • HPOvLic-05.51.053 (Solaris) • HPOvLic-05.51.061 (HP-UX)

Product Version / Patches	Components/ Component Dependencies/ Patches
8.10	<ul style="list-style-type: none"> • HPOvBbc - 06.10.070 • HPOvJbbc - 06.10.070 • HPOvCtrl - 06.00.080 • HPOvJsec - 6.00.050 • HPOvSecCo - 6.00.050 • HPOvJxpl - 6.00.096 • HPOvXpl - 6.00.096 • HPOvLic - <ul style="list-style-type: none"> — 05.50.066 (Windows) — 05.51.061 (HPUX) — 05.51.053 (Solaris) • HPOvJPacc 10.50.090 • HPOvTomcatB 05.05.236 • HPOvJREB 1.05.006 • HPOvSecCC 6.00.050

B Patch Commands

Site Specific Patch

You can use the following command to deploy a site specific patch (hotfix) for Performance Manager:

- **ovpm deploywar "<location>"** - To deploy and extract Performance Manager war file. Before using this command, refer to the readme file associated with the site specific patch for detailed information. In this instance, *location* refers to the location of the war file. When you use this command, all the graphs generated by `ovpmbatch` will be deleted. This option automatically does the following:
 - a Stops Performance Manager application.
 - b Extracts the `Perf.war` file from the location specified to `<Install_dir>/www/webapps/OVPM`. This file contains the binaries for Performance Manager.
- By default if you do not specify the location, the `Perf.war` file is extracted from the location `<Install_Dir>/newconfig/OVPM` to `<Install_dir>/www/webapps/OVPM`.
- c Starts Performance Manager application.

General Release Patch

You can use the following commands to install or rollback general release patches for Performance Manager through command prompt:

<bin_dir>/pmpatch <Options>

In this instance, *<options>* can be any of the following options:

- **install <patchfilename>**- To install a new general release patch for Performance Manager., perform the following tasks:
 - a Download the general release patch from specified location.
 - b Save the patch files to a temporary location. Extract the patch files. The patch file (tar file) includes the following files:
 - a patch file, the format of the file name is `PMPatchFiles-<patchversion>.zip`, where *patchversion* indicates the version of the patch.
 - a `readme.txt` which contains the installation instructions
 - a `patchtext.txt` which includes a summary of changes and defect fixes included in the patch.
 - c Copy the patch file to the location `<install_dir>/newconfig/OVPM`.
 - d For instructions to install the patch, see the `readme.txt` file.

- ▶ While installing a patch, you can choose to backup the existing version of the product in case you want to revert to the same. The installer prompts you with messages and you can make a selection based on your requirement. However if you do not backup the existing version of the product you cannot rollback to the same.

This option does the following:

- a Stops Performance Manager application.
- b Replaces files specific to the patch.
- c Starts Performance Manager application.

The log files created post install is saved in the directory `<pm_data_dir>/log`. The format of the log files is: `PM-Patch-<version>-install-<MM-dd-yyyy>.log`.

- **rollback** - To remove the latest patch installed and revert to the version installed previously, run the following command:

```
pmpatch rollback
```

- ▶ You can use this option only if you have a backup of the older version on your system.

This option does the following:

- a Stops Performance Manager application.
- b Reverts files specific to the previous version.
- c Starts Performance Manager application.

The log files created post rollback is saved in the directory `<pm_data_dir>/log`. The format of the log files is: `PM-Patch-<version>-uninstall-<MM-dd-yyyy>.log`.

We appreciate your feedback!

If an email client is configured on this system, by default an email window opens when you click on the bookmark “Comments”.

In case you do not have the email client configured, copy the information below to a web mail client, and send this email to **docfeedback@hp.com**

Product name:

Document title:

Version number:

Feedback:

