

**HERMES SoftLab Oracle's  
Siebel Business Applications  
SMART Plug-In for HP  
Operations Manager  
(SPI for Siebel)**

*This Version 03.20 is for use with HP Operations  
Manager for Windows*

---

**Installation and Configuration  
Guide**



---

# Contents

<b>Notices</b> .....	<b>v</b>
Trademarks .....	v
<b>Document Overview</b> .....	<b>1</b>
Edition History .....	2
Conventions.....	3
<b>Product Documentation</b> .....	<b>4</b>
<b>Customer Support</b> .....	<b>5</b>
Licensing.....	5
Contacting Support.....	5
Before Contacting Support .....	5
General Information .....	6
Product Web Sites .....	6
<b>Chapters Summary</b> .....	<b>7</b>
<b>Installing SPI for Siebel</b> .....	<b>9</b>
<b>Overview of the Installation Procedure</b> .....	<b>10</b>
Preparing for Installation.....	11
Prepare Hardware and Software .....	11
Hardware Requirements .....	11
Software Requirements .....	11
Supported Platforms .....	12
Plan the Siebel Environment .....	13
Prepare the Siebel Environment .....	13
On the HP Software side: .....	13
On the Siebel side: .....	14
Obtain Installation Packages .....	14
<b>Installing SPI for Siebel on the HPOM Management Server</b> .....	<b>15</b>
Configure SPI for Siebel .....	16
Verify the Installation .....	19

<b>Configuring SPI for Siebel on the HPOM Management Server.....</b>	<b>22</b>
Assign SIEBSPI Operator User Profile .....	22
Add Nodes to the Management Server and Installing HPOM Agent.....	22
Using Applications on localized versions of Microsoft Windows.....	22
<b>Installing SPI for Siebel on the Managed Nodes.....</b>	<b>23</b>
Install SPI for Siebel on the Managed Nodes .....	23
<b>Licensing .....</b>	<b>24</b>
Distribute the Licensing Template to the Managed Nodes .....	24
Generate the License Request File .....	25
Obtain the License Activation File .....	27
Merge and Deploy the License Files.....	27
Verify Licensing.....	28
List License Activation Codes .....	29
Verify License Activation Codes .....	29
<b>Deploying SPI for Siebel Policies on the Managed Nodes .....</b>	<b>30</b>
<b>Installing and Configuring SPI for Siebel on the Managed Node with Siebel Software Running in Cluster.....</b>	<b>31</b>
Background .....	31
ClAw (Cluster Awareness) .....	32
APM (Application Package Monitor) .....	32
Active/Passive Environment - Make HPOM Agent Cluster-aware .....	33
Active/Active Environment - Additional Configuration .....	36
<b>Re-installing SPI for Siebel .....</b>	<b>41</b>
<b>Installing Reports.....</b>	<b>42</b>
Configure Nodes for the SPI for Siebel Reporter Lite Package .....	43
<b>Uninstalling SPI for Siebel .....</b>	<b>45</b>
<b>Uninstallation Overview.....</b>	<b>46</b>
<b>Uninstalling from the Managed Nodes .....</b>	<b>47</b>
<b>Uninstalling from the Management Server.....</b>	<b>48</b>
<b>Uninstalling from a Reporter System.....</b>	<b>49</b>

---

# Contents

Licensing .....	51
Licensing Overview .....	52



---

## Notices

The information contained in this document is subject to change without notice.

HERMES SOFTLAB D.D. PROVIDES THIS MATERIAL "AS IS" AND MAKES NO WARRANTY OF ANY KIND, EXPRESSED OR IMPLIED, INCLUDING, BUT NOT LIMITED TO, THE IMPLIED WARRANTIES OF MERCHANTABILITY AND FITNESS FOR A PARTICULAR PURPOSE. HERMES SOFTLAB D.D. SHALL NOT BE LIABLE FOR ERRORS CONTAINED HEREIN OR FOR INCIDENTAL OR CONSEQUENTIAL DAMAGES IN CONNECTION WITH THE FURNISHING, PERFORMANCE OR USE OF THIS MATERIAL WHETHER BASED ON WARRANTY, CONTRACT, OR OTHER LEGAL THEORY.

---

## Trademarks

This document contains proprietary information, which is protected by copyright. All rights are reserved. No part of this document may be photocopied, reproduced or translated to another language without the prior written consent of HERMES SoftLab d.d.

HP® and OpenView® are registered trademarks of the Hewlett-Packard Company in the United States and other jurisdictions.

IBM® and AIX® are registered trademarks of the IBM Corporation.

Oracle® is a registered trademark of Oracle Corporation.

Siebel™ is a trademark of Siebel Systems, Inc.

Sun™ and Solaris™ are trademarks of Sun Microsystems, Inc.

UNIX® is a registered trademark in the U.S. and other countries licensed exclusively through X/Open Company, Ltd.

Microsoft®, Windows®, Windows® 2000, Windows Server™ 2003, and Windows NT® are either registered trademarks or trademarks of Microsoft Corporation in the United States and/or other countries.

All other product names are the property of their respective trademark or service mark holders and are hereby acknowledged.

HERMES SoftLab d.d.  
Litijaska 51  
SI-1000 Ljubljana  
Slovenia, Europe  
[www.hermes-softlab.com](http://www.hermes-softlab.com)  
Copyright © 2008 HERMES SoftLab d.d.



---

## Chapter 1

---

### Document Overview

---

---

## **Edition History**

New editions are complete revisions of the manual. The printing dates for each edition are listed below.

<b>Edition</b>	<b>Date</b>
First Edition	August 2006
Second Edition	December 2006
Third Edition	July 2007
Fourth Edition	May 2008
Fifth Edition	October 2008

---

## Conventions

The following typographical conventions are used in this manual:

Font	Definition	Example
<i>Italic</i>	Product names, book or manual titles, man page names, and section, table, and figure titles.  Emphasis.  Window and dialog box names.	Refer to the <i>SPI for Siebel User's Guide</i> for additional information.  You <i>must</i> follow these steps.  In the <i>Node Bank</i> window, select a node.
<b>Bold</b>	Commands on menus and buttons, dialog box titles and options, menu and icon names.	In the menu, first click <b>Actions</b> , and then <b>Agents</b> .
<b>Computer</b>	File names, syntax, directory names, or text that should be entered on screen or that is displayed on the monitor.	The following file is located on the root directory of the SPI for Siebel installation CD: <code>siebspi-readme-win.txt</code> .

---

## Product Documentation

With SPI for Siebel, the following documentation is provided:

- *HERMES SoftLab Oracle's Siebel Business Applications SMART Plug-In for HP Operations Manager Installation and Configuration Guide*  
Installation and Configuration Guide is available in PDF format  
(*SIEBSPI-InstallGuideWIN.pdf*).
- *HERMES SoftLab Oracle's Siebel Business Applications SMART Plug-In for HP Operations Manager User's Guide*  
User's guide is available in PDF format  
(*SIEBSPI-UserGuideWIN.pdf*).
- *HERMES SoftLab Oracle's Siebel Business Applications SMART Plug-In for HP Operations Manager - Supported Siebel and HP Software Platforms*  
Supported Platforms document is available in PDF format  
(*SPI\_for\_Siebel-Supported\_Platforms.pdf*).
- Release notes  
Release notes are available in TXT format (*siebspi-release-notes-win.txt*).
- Readme  
Readme file is available in TXT format (*siebspi-readme.txt*).
- HERMES SoftLab software license terms file  
License file is available in TXT format  
(*hsl\_software\_license\_support\_terms\_signed.txt*)

---

## Customer Support

Use the following e-mail and Web page addresses if you need help with the licensing process or while using the product, and if you would like additional information about this or other HERMES SoftLab products.

---

## Licensing

To obtain the license activation file you can visit HERMES SoftLab licensing portal:

<http://spi.hermes-softlab.com/licensing/>

or send an e-mail to the following address:

[spi-licensing@hermes-softlab.com](mailto:spi-licensing@hermes-softlab.com)

For more information on licensing and licensing procedure refer to “Licensing” on page 36.

If you encounter any problems with the licensing process, contact the HERMES SoftLab licensing department at:

[spi-licensing@hermes-softlab.com](mailto:spi-licensing@hermes-softlab.com)

---

## Contacting Support

---

### IMPORTANT

**Should you require additional assistance or information while using the product, contact the vendor that shipped the software.**

If you have purchased the software directly from HERMES SoftLab, send e-mail to:

[support-siebelspi@hermes-softlab.com](mailto:support-siebelspi@hermes-softlab.com)

### Before Contacting Support

Before you contact the support department, have the following information available so that a technical support analyst can work on your problem more efficiently:

- the support files `siebspi_supp.zip` (on Windows managed nodes) and `siebspi_supp.tar` (on Unix managed nodes)

To create the support file, run the **Collect Information UN\*X** or **Collect Information Win** tool on one or more nodes. To run the tool, perform the

following steps:

1. Go to **Tools/SPI for Siebel/SIEBSPI-Maintenance/SIEBSPI-Support/SIEBSPI-Windows Nodes** or **Tools/SPI for Siebel/SIEBSPI-Maintenance/SIEBSPI-Support/SIEBSPI-UN\*X Nodes** tools group and run the **Collect Information WIN** or **Collect Information UN\*X** tool. The *Select where to launch this tool* window opens.

2. Select the node(s) and click Launch to run the tool. The files sieblespisupp.zip or sieblespisupp.tar with the support information are created in the following directory on the node(s):

<OvAgentDataDir>/siebspi/supplog on Unix

<OvAgentDataDir>\siebspi\supplog on Windows

- symptoms
- sequence of events leading to the problem
- commands and options that you used
- messages you have received (a description with the time and date)

---

## General Information

For marketing or business-related issues in reference to this or other HERMES SoftLab SPIs, send e-mail to:

[spi-info@hermes-softlab.com](mailto:spi-info@hermes-softlab.com)

---

## Product Web Sites

Visit HERMES SoftLab SMART Plug-In Web site at:

[http://www.hermes-softlab.com/products/SPI/about\\_SPI.html](http://www.hermes-softlab.com/products/SPI/about_SPI.html)

and the company Web site at:

<http://www.hermes-softlab.com/>

---

## Chapters Summary

This guide describes how to install, configure, and license HERMES SoftLab Oracle's Siebel Business Applications SMART Plug-In for HP Operations Manager to monitor and manage Siebel application resources from the HP Software environment. It also addresses and troubleshoots some of the possible installation problems.

---

### NOTE

**This document assumes that you are familiar with the HP Operations Manager administration procedures and concepts.**

The guide contains the following chapters:

- [“Installing SPI for Siebel” on page 9](#)  
This chapter provides detailed instructions on what must be performed to successfully install, configure, and license SPI for Siebel.
- [“Uninstalling SPI for Siebel” on page 45](#)  
This chapter describes how to uninstall SPI for Siebel.
- Appendix A, [“Licensing Overview” on page 52](#)  
This chapter provides a visual overview of the licensing process.





---

## Chapter 2

---

### Installing SPI for Siebel

---

---

## Overview of the Installation Procedure

The following table summarizes procedures to install, configure, and license SPI for Siebel. Make sure to read and perform all steps, otherwise the product may not work properly.

To...	Refer to
check the system hardware and software requirements	<a href="#">"Prepare Hardware and Software" on page 11</a>
plan the environment you want to manage with SPI for Siebel	<a href="#">"Plan the Siebel Environment" on page 13</a>
prepare the environment for SPI for Siebel installation	<a href="#">"Prepare the Siebel Environment" on page 14</a>
obtain installation packages	<a href="#">"Obtain Installation Packages" on page 14</a>
install SPI for Siebel on the HPOM management server	<a href="#">"Installing SPI for Siebel on the HPOM Management Server" on page 16</a>
verify the SPI for Siebel installation	<a href="#">"Verify the Installation" on page 26</a>
configure SPI for Siebel	<a href="#">"Configuring SPI for Siebel on the HPOM Management Server" on page 31</a>
install SPI for Siebel on managed nodes	<a href="#">"Installing SPI for Siebel on the Managed Nodes" on page 33</a>
license the product	<a href="#">"Licensing" on page 35</a>
deploy SPI for Siebel on managed nodes	<a href="#">"Deploying SPI for Siebel Templates/ Policies on the Managed Nodes" on page 42</a>
install and configure reports	<a href="#">"Installing Reports" on page 54</a>

---

## Preparing for Installation

The following must be ensured before you may start with installation of SPI for Siebel:

- Check if SPI for Siebel supports your Siebel and HP Software platforms
- Make sure that HP Operations Manager for Windows is correctly installed on the management server
- All machines with Siebel installed are added as managed nodes to the HP Operations Manager for Windows
- Complete Siebel configuration data is available
- Managed nodes are configured
- The Siebel environment is prepared
- SPI for Siebel installation package is available
- Remove SPI for Siebel completely (also perform the manual steps) if you already have any version of the product installed

---

## Prepare Hardware and Software

Make sure that hardware and software requirements are met.

### Hardware Requirements

The HPOM management server and managed nodes hardware requirements can be found in the HP Operations Manager manuals.

The Siebel Business Applications hardware requirements can be found in the following manual:

- *Siebel System Requirements and Supported Platforms*

### Software Requirements

SPI for Siebel is compatible with Siebel Data Sources and the following Oracle's Siebel Business Applications versions:

- Version 6/2000 (6.3, 6.2.1, and 6.0.1)
- Version 7 (7.0.x, 7.5.x, and 7.7.x, 7.8.x)
- Version 8 (8.0.x)

## Supported Platforms

The following table contains a list of all operating and management system platforms supported by SPI for Siebel:

Operating System Platform	Siebel Server Platforms	HPOM Management Platforms
Microsoft Windows 2000/2003/2008	YES	YES
Sun Solaris	YES	YES*
IBM AIX	YES	N/A
HP-UX	YES	YES*

\* Available in version 03.20 for use with HP Operations Manager for UNIX.

For more information about supported platforms and versions refer to the SPI for Oracle Siebel Business Application - Supported Siebel and HP Software Platforms-Summary.pdf.

SPI for Siebel is compatible with the following software for the HP Operations Manager management server.

Software	Versions
HP Operations Manager	7.50, 8.0.x, 8.1.x
Microsoft Windows 2003	5.2
Microsoft Windows 2008	6.0

The following Performance Manager and Reporter versions are supported:

Software	Versions
HP Performance Manager	6.x, 8.x, 8.1
HP Reporter	3.7, 3.8
HP Reporter Lite (shipped with HPOM/W)	Reporter Lite with HPOM/W 7.50

Integration with HP Performance Manager or HP Reporter require *HP Performance Agent* (HPPA, formerly OVPA or MWA) or *Embedded Performance Component of the HPOM Agent* (CODA). You can use either HPPA or CODA to gather SPI for Siebel metrics on your managed nodes.

---

**NOTE**

---

**The Embedded Performance Component (CODA) of the HPOM Agent is part of HP Operations Manager version 7.50, 8.0.x, and 8.1.x**

To use the reporting functionality, you must install Data Source Integration To Dynamic Data Feed on the managed node:

DSI2DDF	A.01.30, A.02.02
---------	------------------

---

**NOTE**

---

**The installation bundle HP Smart Plug-Ins DSI-to-DDF wrapper utilities can be found on the HP SMART Plug-ins for HPOM CD.**

---

**Plan the Siebel Environment**

The following Siebel information will be needed during the SPI for Siebel configuration:

- the name of your Siebel enterprise
- the name of the host on which the Siebel Gateway server is installed
- the database type
- username and password of the Siebel administrator
- the name and the port number of the SMTP mail server
- Siebel language

---

**Prepare the Siebel Environment****On the HP Software side:**

- HPOM agents must be installed and running on all Preproduction Siebel nodes with the `opcmsg` policy assigned to those nodes to enable sending a message and starting an action from the management server.
- You must have access to the HP Operations Manager management server and all nodes where you will install the SPI for Siebel. During implementation you will

also need access to HP Performance Manager, HP Internet Services (optional) and HP Reporter (optional).

### On the Siebel side:

- Siebel must be installed and running on all nodes where you will install SPI for Siebel, so that Siebel Enterprise Applications Server Manager command line tool is working. To check the above, run the Siebel command:

```
srvrmgr /g gateway /e enterprise /u user /p password
```

and run the command `list servers`

You should receive a Running state for the Siebel servers installed in Siebel.

- The `odbcsql` command line tool should work on all target nodes. To check, start the following command:

In Siebel 8.0.x:

```
odbcsql /s enterprise_DSN /u user /p password
```

---

## Obtain Installation Packages

To install SPI for Siebel Business Application and Reports, you need the following installation packages:

- `SPIforSiebel_03.20.exe`
- `SPIforSiebel-Reports_03.21.exe`

You can find them on your installation CD or download `SPIforsiebel_exe` from the SPI for Siebel download pages.

---

### NOTE

**The `SPIforSiebel-Reports_03.21.exe` installation package is part of the `SPIforSiebel_03.20.exe` installation package and is extracted to the management server when you execute `SPIforSiebel_03.20.exe`. For more information, refer to [Chapter 2, "Installing SPI for Siebel,"](#).**

---

## Installing SPI for Siebel on the HPOM Management Server

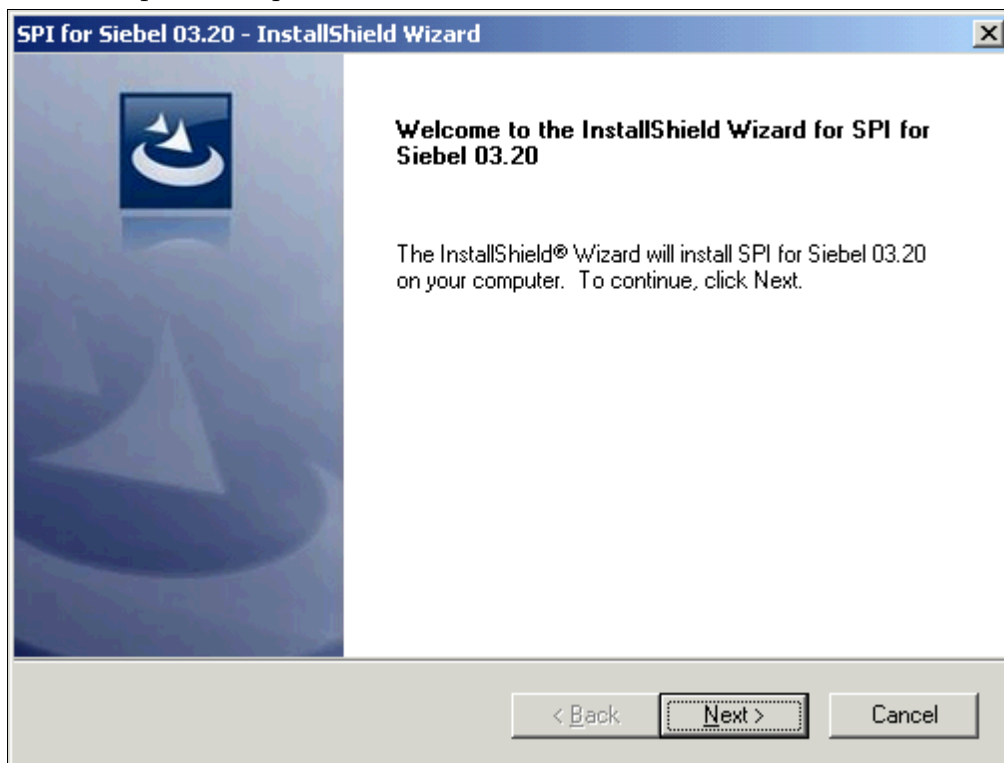
To install SPI for Siebel on the HPOM management server, perform the following steps:

---

### NOTE

**During the installation, all HPOM processes must be “up and running”.**

1. Login to your Windows computer where the HP Operations Manager for Windows management server is installed as the user with administrator permissions.
2. Run the SPIforSiebel\_03.20.exe self-extracting package. The SPI for Siebel Setup Wizard opens.



3. Click **Next** to open the window where you must enter your name and the name of your company.

**SPI for Siebel 03.20 - InstallShield Wizard**

**Customer Information**

Please enter your information.

Please enter your name and the name of the company for which you work. Note that this information is going to be used when accepting software license and support agreement.

User First / Last Name:

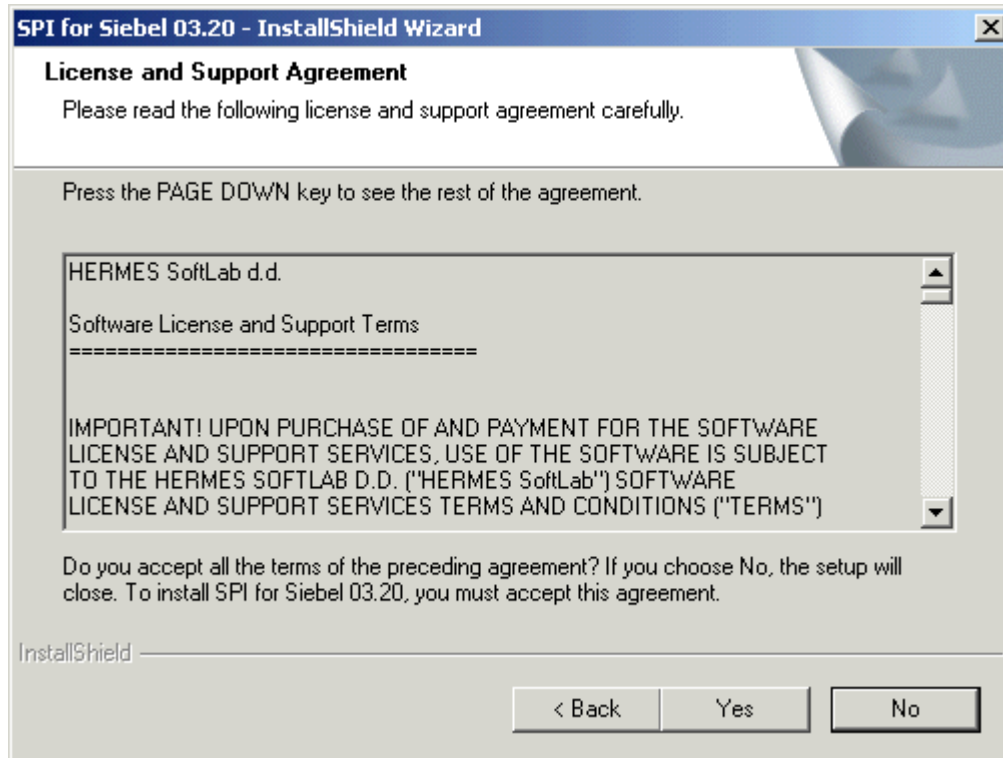
Company Name:

InstallShield

< Back    Next >    Cancel



4. Click **Next** to open the *License and Support Agreement* window. Read through the Terms carefully and click **Yes** if you accept the Terms.



5. The *View Relevant Product Configuration* window opens. Click **Next** to install the product.

At the end of the installation procedure, you need to configure SPI for Siebel.

---

## Configure SPI for Siebel

1. After the installation process is completed successfully, the *SPI for Siebel*

Configuration window opens.



2. Click **Next** and supply the information as described in the following table (see also [2. on page 24](#)):

Field	Description
Siebel Enterprise	Enter the name of your Siebel enterprise.
Using Resonate Central Dispatch	Check the box if you are using Resonate Central Dispatch.
Using cluster	Check the box only if Siebel Application Servers are in cluster.
Siebel Gateway (name server)	Enter the name of the host on which the Siebel Gateway server is installed. If you have the Resonate server dispatch installed, do not enter the Gateway VIP.
Siebel Administrator Username	Enter the username of the Siebel administrator.
Siebel Administrator Password	Enter the password of the Siebel administrator.
Retype Siebel Administrator Password	Re-enter the Siebel administrator password.
SPI for Siebel locale	Type the locale that SPI for Siebel should use.
SMTP (mail) Server	Enter the name of the SMTP mail server.
SMTP Port	Enter the port number of the SMTP mail server.
HP Performance Agent	The appropriate HP Performance Agent (installed on the managed node) must be specified. If no performance agent is installed on the node, <b>NONE</b> should be used.
Siebel Language	Select Siebel language from the list of languages.
Siebel Language	If <b>OTHER</b> was selected in the Siebel Language combo box, type the Siebel language.
Siebel Locale	If <b>OTHER</b> was selected in the Siebel Language combo box, type the Siebel locale.
Database	Select a database type from the drop-down list.

Figure 3. SPI for Siebel configuration

SPI for Siebel Configuration

HERMES SoftLab Oracle's Siebel Business Applications  
SMART Plug-In for HP Operations Manager

Siebel Enterprise:  
siebel8

Using Resonate Central Dispatch  
 Using cluster for Siebel Application Server

Siebel Gateway (name server):  
siebgtwy

Siebel Administrator Username:  
SADMIN

Siebel Administrator Password:  
\*\*\*\*\*

Retype Siebel Administrator Password:  
\*\*\*\*\*

SPI for Siebel Locale:  
en

SMTP (mail) Server:  
mail-server

SMTP Port:  
25

Performance Agent:  
CODA - Embedded Performance Agent

Siebel Language:  
ENU

Siebel Language:  
\*\*\*\*\*

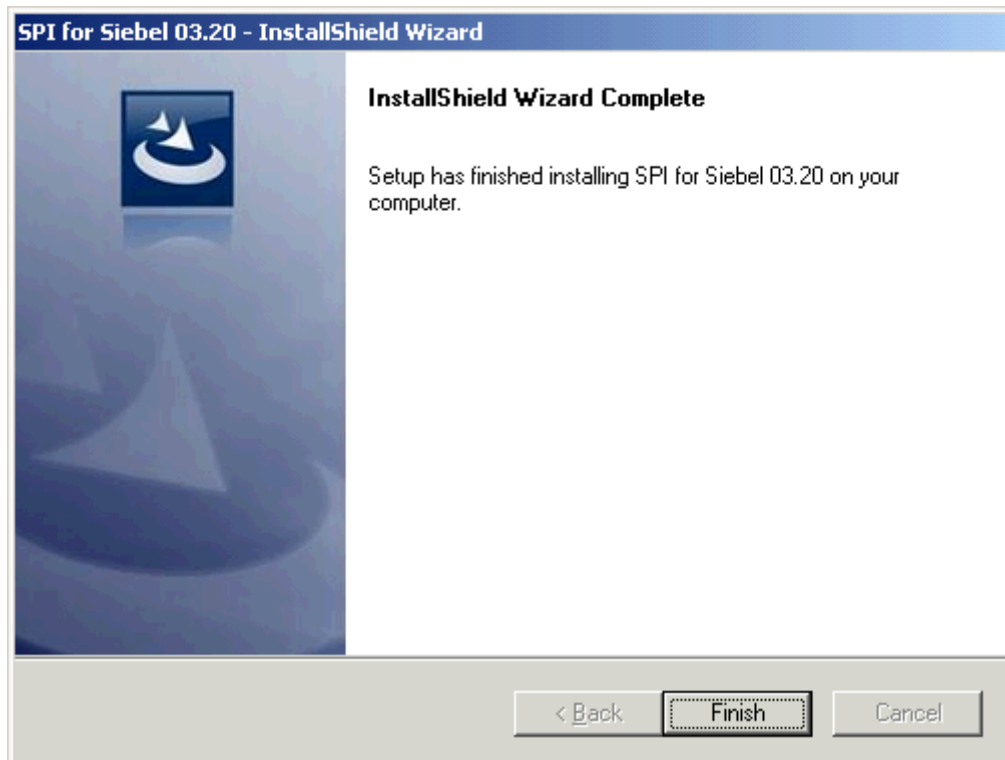
Siebel Locale:  
\*\*\*\*\*

Database:  
Oracle

< Back   Next >   Cancel

4. Click **Next**, and then **Finish** to complete the setup.

5. When the configuration is completed, the *InstallShield Wizard Complete* window opens, click **Finish** to finish the installation.



---

## NOTE

**You can change the configuration information at any time by running the SPI for Siebel Configuration Wizard again. Go to the Tools/SPI for Siebel/SIEBSPI-Maintenance/SIEBSPI-Configuration and start the Configuration Wizard tool. After changing the configuration on the Management server, you have to repeat deployment and installation steps on the managed nodes so that configuration changes take effect.**

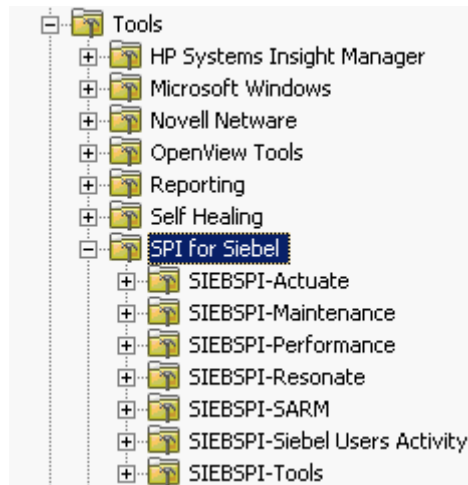
---

## Verify the Installation

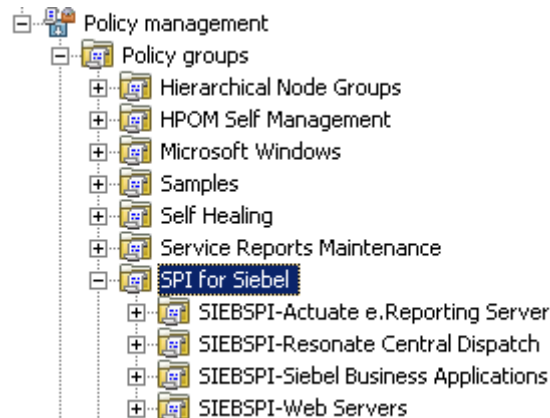
After the installation has completed successfully, many new HP Operations Manager configuration items are uploaded to the HP Operations Manager database on the management server.

To review these new items, start the HPOM administrator GUI (graphical user interface) and check if SPI for Siebel group was added to tools and policy groups.

- New tools group:



- New policy group:



---

**NOTE :**

**Refer to *SPI for Oracle's Siebel Business Applications User's Guide* for detailed information about Tools and Tools Groups as well as Policies and Policy Groups.**

---

---

## Configuring SPI for Siebel on the HPOM Management Server

Before you can deploy SPI for Siebel on the managed nodes, you need to perform additional configuration tasks on the HPOM management server.

---

### Configure User Roles

After installation, you must configure user roles for all users that will be using the management console.

Although user roles can contain both administrative and operator tasks, they are assigned to operators only. Additionally, an operator may be assigned to more than one user role. Note that administrators have access to all operator and administrative functions.

---

#### IMPORTANT:

**Before operators can be assigned a user role, they must belong to the group account HP-OVE-OPERATORS. If a user is assigned to the HP\_OVE\_ADMINS group, that user has unrestricted administrative access.**

SPI for Siebel installs two new user roles:

- Siebel-admin
- Siebel-operator

To assign a user a user role or change a "Siebel operator" user role, select the following commands from the menu bar: **Action**, followed by **Configure**, and then **User Roles**. Refer to the online help, *Configuring user roles*, for additional information.

---

### Add Nodes to the Management Server and Installing HPOM Agent

For instructions on how to add nodes to the management server, add nodes that you want to manage, and install HPOM Agent software, refer to *HP Operations Manager for Windows* online documentation.

---

## Installing SPI for Siebel on the Managed Nodes

---

### Install SPI for Siebel on the Managed Nodes

After the software is installed on the HPOM management server and the configuration is uploaded, you must distribute the software components and the configuration to the managed nodes. Note that the Administrator should also customize the thresholds within the policies.

---

#### NOTE :

---

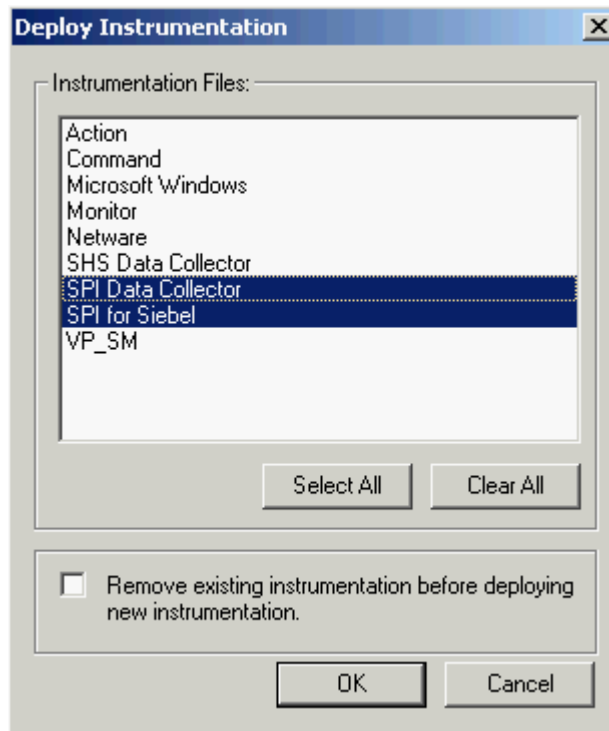
**When deploying instrumentation on the nodes, make sure that all Siebel services are running (for example, Gateway service, Siebel Server services, and so on) and that you have performed the configuration steps described in [“Configure SPI for Siebel” on page 20](#) for every enterprise.**

To deploy instrumentation and install SPI for Siebel on managed nodes, perform the following steps:

1. In the *Node* tree, select and right-click the target node.
2. Select **All Tasks**, and then select **Deploy Instrumentation**.



3. In the *Deploy Instrumentation* window, select **SPI for Siebel**. Optionally, select also **SPI Data Collector** if you are using the Embedded Performance Component of the HPOM Agent. Click **OK**.



4. Wait for the deployment to finish. You can monitor deployment progress in *Deployment Jobs*.
5. Expand **SPI for Siebel/SIEBSPI-Maintenance/SIEBSPI-Installation/SIEBSPI-Windows Nodes** or **SPI for Siebel/SIEBSPI-Maintenance/SIEBSPI-Installation/SIEBSPI-UN\*X Nodes** tools group and run the **Install WIN** or **Install UN\*X** tool.

---

## Licensing

Before you can start using SPI for Siebel, you must obtain a valid license key for every managed node that you want to monitor with this product.

---

### IMPORTANT

---

**Each license key is node specific and cannot be transferred to or used on any other node.**

To obtain and activate product license keys, perform the following steps:

1. [“Deploy the Licensing Policy on the Managed Nodes” on page 35](#)
2. [“Generate the License Request File” on page 36.](#)
3. [“Obtain the License Activation File” on page 39.](#)
4. [“Merge and Deploy the License Files” on page 39.](#)

For a visual overview of the licensing process, refer to [“Licensing Overview” on page 52.](#)

---

## Deploy the Licensing Policy on the Managed Nodes

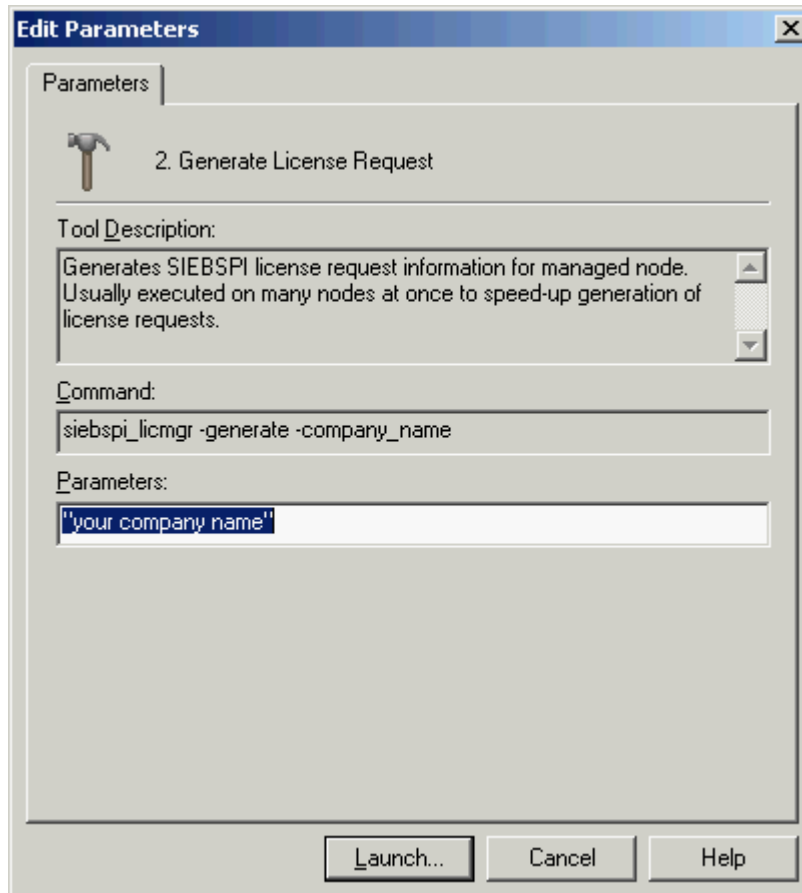
1. Start the HPOM Console and log in as HPOM Administrator.
2. From the **Policy groups**, expand **SPI for Siebel/SIEBSPI-Siebel Business Applications/SIEBSPI-Siebel \*.\* /SIEBSPI-Internal** group, and then deploy the **SIEBSPI\_LICENSE\_OPC\_MSG** policy on all SPI for Siebel nodes.
3. Deploy instrumentation SPI for Siebel on all Siebel nodes. Note that this step might already be performed as part of the SPI for Siebel installation.

---

## Generate the License Request File

1. Go to **SPI for Siebel/SIEBSPI-Maintenance/SIEBSPI-Licensing/SIEBSPI-{UN\*X|Windows} Nodes** tools group and run the **1. Clear License Request File** tool to clear the `siebspi_license_requests.dat` license request file on the management server.

2. Run the **2. Generate License Request** tool on the managed nodes for which you need licenses. In the **Edit Parameters** dialog box, replace the string “Your Company Name” with the name of your company.



3. Click **Launch** to generate the `siebspi_license_requests.dat` license request file. The licence request file will be created in the HPOM Management Server SPI-Share folder (usually `C:\Program Files\HP OpenView\Data\shared\SPI-Share\siebspi\` if you are using HPOM/W 7.50 or `C:\Program Files\HP\HP BTO Software\Data\shared\SPI-Share\siebspi\` if you are using HPOM/W 8.00) on the management server.

---

## Obtain the License Activation File

1. To obtain the license activation file:
    - Use the Licensing portal:  
Go to <http://spi.hermes-softlab.com/licensing/>, register, and upload the license request file. The system will automatically process your request. When registering to the Permanent licenses page, have your PO information ready. You can also access the Temporary licenses page to obtain 30-day license keys for evaluation or testing purposes.
  - or*
  - Send e-mail to the Licensing Department:  
Send the generated license request file by e-mail to the HERMES SoftLab Licensing Department at [spi-licensing@hermes-softlab.com](mailto:spi-licensing@hermes-softlab.com). You will receive the license activation file usually within 24 hours. If you have bought the product and need immediate response, contact HERMES SoftLab by telephone and e-mail (see contact information on License Entitlement Certificate).
2. You will receive a license activation file `siebspi_liact_new.dat` by e-mail.

---

## Merge and Deploy the License Files

1. Copy the `siebspi_liact_new.dat` file to the following directory on the management server: `C:\Program Files\HP OpenView\Data\shared\SPI-Share\siebspi\` if you are using HPOM/W 7.50 or `C:\Program Files\HP\HP BTO Software\Data\shared\SPI-Share\siebspi\` if you are using HPOM/W 8.00.
2. Run the **3. Merge License Activation Codes** tool to merge the `siebspi_liact_new.dat` file with the `siebspi_liact.dat` license file.
3. Deploy the SPI for Siebel instrumentation on all managed nodes for which you have requested the licenses as described in [“Install SPI for Siebel on the Managed Nodes” on page 33](#).

---

## Verify Licensing

To check if the licensing was successful, check the license key on the managed node by running one of the tools on each of the license nodes.

---

## Deploying SPI for Siebel Policies on the Managed Nodes

To deploy the policies on the node, follow the steps below. However, do not push all of the SPI for Siebel policies to a node. Depending on the type of software that is running on the selected nodes, you should select policy groups carefully. For example, it may be wise to start with autodiscovery and then decide on which policy groups should be enabled for a specific managed node.

1. Select **Policy Management** followed by **Policy groups** and then **SPI for Siebel**.  
Select one or more policies or policy groups from the **SPI for Siebel** policy group. For additional information on which policies to use, refer to *SPI for Oracle's Siebel Business Applications User's Guide*.
2. When you selected all policies you want to deploy on the node right-click the selection and in the menu click **All Tasks**, and then select **Deploy on**.
3. Wait for the deployment to finish. You can monitor deployment progress in *Deployment Jobs*.

---

## Installing and Configuring SPI for Siebel on the Managed Node with Siebel Software Running in Cluster

---

### Background

On clusters, you can install and operate the following Siebel Enterprise Server components:

- Siebel Gateway Server, including Name Server and Central Dispatch
- Siebel Server and its components
- Siebel File System

Those parts of Siebel Enterprise Server use cluster sharing resources (for example, physical disks, network addresses) that can be automatically or manually transferred to another node in the event of failure or shutdown of the first node.

Using SPI for Siebel in an Active/Passive high-availability environment requires a few setup steps to make the managed HPOM agents on those nodes "cluster-aware". These steps follow HP Software guidelines and may vary depending on the version of the HP Operations Manager product, platform, and cluster software being used. In the Active/Active high-availability environment you must additionally configure SPI for Siebel scripts to change SPI configuration settings during failovers of specific Siebel resource groups. In the Active/Passive high-availability environment you do not need to make any additional changes on the SPI for Siebel itself.

Siebel Enterprise server installation in Active/Active cluster configuration uses two physical machines (nodes) clustered together and two different Siebel cluster resource groups (parts of Siebel) running on each node. Cluster resource groups can be joined on one node if the problem occurs with the specific Siebel cluster resource group on the designated primary node. SPI for Siebel supports Siebel in this cluster configuration with the help of the HPOM agent opcapm functionality. opcapm automatically triggers Perl scripts when changes in the status of the specific Siebel cluster resource group occur. The opcapm functionality enables/disables deployed templates and triggers simple command lines on the managed node. SPI for Siebel cluster perl script can be configured to adequately change the SPI for Siebel configuration, restart/stop the SPI for Siebel Request Server service daemon, and enable/disable templates depending on the last change in the status of the specific Siebel cluster resource group.

---

## NOTE

---

**SPI for Oracle's Siebel Business Applications is using HPOM APM functionality described below. It does not use HPOM CIAw functionality introduced with HPOM HTTPS agents.**

### **CIAw (Cluster Awareness)**

Cluster awareness is HP Operations Manager functionality, which is used to monitor start and stop events of cluster packages. The CIAw module must be installed on each physical node of a cluster that is to be monitored, as the cluster awareness software only monitors start and stop events on the LOCAL node. The CIAw module is part of the HPOM HTTPS agent and the functionality is located in the ovconfd process.

#### **CIAw Command Line Utilities**

1. `$ovBinDir/ovclusterinfo` prints cluster related information.

*Example:*

```
/opt/OV/bin/ovclusterinfo -a
```

2. `$ovBinDir/ovappinstance` provides information about application instances and their related HA resource groups (based on the data available in the `apminfo.xml` configuration file). For further information, refer to the man pages for these commands.

*Examples:*

```
/opt/OV/bin/ovappinstance -ia      -prints active instances
```

```
/opt/OV/bin/ovappinstance -is      -prints all instances
```

### **APM (Application Package Monitor)**

Application Package Monitor is HP Operations Manager functionality which is used to monitor start and stop events of cluster packages. The APM module is part of the HPOM 7.x DCE Agent. The functionality is mainly located in the `opcapm` process, with additional components located in `opcctl` and `opctemplate`. APM serves the same purpose as CIAw and is the predecessor of CIAw. It was introduced through the HPOM Windows product and is also available for HPOM UNIX from version 7.10 on.

#### **APM Command Line Utilities**

`$ovBinDir/opcclustns` provides information about application instances and related resource groups.

---

## Active/Passive Environment - Make HPOM Agent Cluster-aware

---

### NOTE

---

**The following solution was not supported for IBM HACMP because of HP Operations Manager limitations. Nevertheless, other solutions can be implemented to make SPI for Siebel cluster-aware on AIX nodes.**

Prerequisites for managing Oracle's Siebel Business Applications on clusters include the following:

- Installed and configured Oracle's Siebel Business Applications on a cluster supported by Siebel (for additional information, refer to Siebel Online help for supported Clusters). The following resource types must be available for each Resource Group:
  - IP Address  
(the IP Address itself is a prerequisite for the Network Name)
  - Network Name  
(the Network Name must be resolvable - entered in DNS)
- An installed HPOM Agent on every physical node in a cluster. For details about managing cluster-aware applications and supported platforms, refer to the HP Operations Manager Help.

There are two configuration file types:

- `OvDataDir/conf/conf/apminfo.xml`
- `OvDataDir/bin/instrumentation/conf/<app_name>.apm.xml`

---

### NOTE

---

**You must first manually create the directories `$OvDataDir/conf/conf/` and `$OvDataDir/bin/instrumentation/conf/` when you are configuring the `apminfo.xml` file for the first time.**

You must prepare two .xml files for the HPOM Agent working in the high availability environment to become "cluster-aware-agents".

They will be used as a configuration file for the mapping between Applications and Resource Groups in a cluster environment and the agent will know which templates should be active or disabled on the cluster node. This depends on the status of the Resource Group. To do this, perform the following steps.

1. Create or edit the `apminfo.xml` file and the `{Name of the cluster-aware`



application}.apm.xml file and follow the procedure for Managing cluster-aware applications described in the HP Operations Manager Help.

*Example files:*

**Siebel.apm.xml**

```
<?xml version="1.0" ?>
  <APMApplicationConfiguration>
    <Application>
      <Name>Siebel</Name>
      <Template>SIEBSPI_SERVER_PROCESS</Template>
      <Template>SIEBSPI_SERVER_PROCESS_EXT</Template>
      <Template>SIEBSPI_SERVER_EVENT_LOG</Template>
      ...
    </Application>
  </APMApplicationConfiguration>
```

**apminfo.xml**

```
<?xml version="1.0" ?>
  <APMClusterConfiguration>
    <Application>
      <Name>Siebel 1</Name>
      <Instance>
        <Name>Node name 2</Name>
        <Package>Cluster Resource Group Name
      </Package>
      </Instance>
    </Application>
  </APMClusterConfiguration>
```

*Note 1: The same name should be used as for the \*.apm.xml file*

*Note 2: This should be the node name.*

2. Copy the appropriate apminfo.xml file on the managed node to:

- DCE agents:  
\$ovDataDir/conf/OpC
- HTTPS agents:  
\$ovDataDir/conf/conf

From the HPOM/HP-UX or HPOM/Solaris management server you can do this using the following command:

```
opcdeploy -deploy -file /<full path on server>/apminfo.xml -node
<managed node> -targetdir "conf/conf" -trd data
```

---

## NOTE

---

**Syntax check tool for apminfo.xml and <appl\_name>.apm.xml on HTTPS agents is located at:**

```
/opt/ov/bin/ovappinstance -vc
```

where -vc = verify Configuration

**This tool can be called on the managed node where the configuration files are used.**

3. Copy the appropriate {Name of the cluster-aware application}.apm.xml file to the following directories on the on the managed node :
  - DCE agents from HPOM/Unix 7.x:  
\$ovDataDir/bin/OpC/monitor
  - HTTPS agents or DCE agents from HPOM/Windows:  
\$ovDataDir/bin/instrumentation/conf

From the HPOM/HP-UX or HPOM/Solaris management server you can do this using the following command:

```
opcdeploy -deploy -file /<full path on server>/<appl_name>.apm.xml -node
<managed node> -targetdir "/bin/instrumentation/conf" -trd data
```

4. Restart the agent on all of the managed nodes in the cluster with (DCE agent only):
 

```
opcagt -kill
opcagt -start
```
5. After SPI for Siebel installation, edit the <AgentInstallDir>/siebspi/conf/spi.cfg file on all cluster nodes and change the HOST parameter to the virtual cluster host name.

---

## NOTE

---

The following templates should be deployed to all HPOM managed nodes on Sun Solaris that are used with Veritas Cluster:

Engine Log (VCS)  
Engine notify Log (VCS)

The following template should be deployed to all HPOM managed nodes on HP-UX that are used with MC Service Guard:

MCSG\_Syslog

Else failover will not be detected.

---

## Active/Active Environment - Additional Configuration

To configure SPI for Siebel in an Active/Active high-availability environment, you first need to have all HPOM agents cluster-aware and then prepare additional configuration actions that will be automatically triggered on each managed node when a specific Siebel cluster resource group status changes.

*Example:*

We have active/active cluster configuration with 2 physical machines: SRVR03 and SRVR04. Each physical machine has 2 cluster groups: one for the Siebel Server and one for the Gateway.

1. Configure the `apminfo.xml` file to include references between Siebel resource groups and `<ClusterResourceGroup_Node_>.apm.xml`. We must prepare the following set of files:

```
SiebGW_SRVR03.apm.xml  
SiebSRV_SRVR03.apm.xml  
SiebGW_SRVR04.apm.xml  
SiebSRV_SRVR04.apm.xml
```

*Example files:*

**apminfo.xml for the node SRVR03**

```
?xml version="1.0" ?>  
<!-- OVO Agent Configuration for cluster -->  
<APMclusterConfiguration>
```

```

    <Application>
      <Name>SiebGW_SRVR03</Name> <!-- Name that will be used for
*.apm.xml file -->
      <Instance>
        <Name>procrm03</Name>
        <Package>gcrm</Package> <!-- GW cluster resource group name -->
      </Instance>
    </Application>
  </Application>
  <Application>
    <Name>SiebSRV_SRVR03</Name> <!-- Name that will be used for
*.apm.xml file -->
    <Instance>
      <Name>procrm03</Name>
      <Package>acrm</Package> <!-- Siebel Server cluster resource
group name -->
    </Instance>
  </Application>
</APMClusterConfiguration>

```

#### **SiebSRV\_SRVR03.apm.xml for the node SRVR03**

```

<?xml version="1.0" ?>
<!-- OVO Agent Configuration for SPI for Siebel on cluster -->
<APMApplicationConfiguration>
  <Application>
    <Name>SiebSRV_SRVR03</Name>
    <StartCommand>SiebSRV_SRVR03_enable.sh</StartCommand>
    <StopCommand>SiebSRV_SRVR03_disable.sh</StopCommand>
  </Application>
</APMApplicationConfiguration>

```

2. Copy the appropriate <ClusterResourceGroup\_Node\_>.apm.xml to the managed node to:
  - DCE agents from HPOM/Unix 7.x:  
\$ovDataDir/bin/OpC/monitor
  - HTTPS agents or DCE agents from HPOM/Windows:  
\$ovDataDir/bin/instrumentation/conf

From the HPOM/HP-UX or HPOM/Solaris management server you can do this using the following command:

```
opcdeploy -deploy -file /<full path on
server<ClusterResourceGroup_Node_>.apm.xml 1 -node <managed node> -
targetdir "/bin/instrumentation/conf" -trd data
```

3. Identify actions that should be performed for each Siebel cluster group on each managed node and save them to appropriate <Resource\_group>\_<node>action.cfg files.

Perform the following actions when a specific Siebel group goes online or offline:

- . Add/Remove configuration parameters from the spi.cfg file  
For the Siebel App. server:  
SERVERS\_ON\_HOST,  
SIEBEL\_SERVER\_ROOT\_PATH,  
SIEBEL\_SERVER\_MNGR  
  
For Siebel Gateway:  
SIEBEL\_GATEWAY\_ROOT\_PATH
- . Enable/Disable SPI for Siebel policies
- . Rewrite the existing spi.cfg file
- . Restart SPI for Siebel Request server services

You need to prepare the following set of files:

```
SiebGW_SRVR03_disable.cfg
SiebGW_SRVR03_enable.cfg
SiebGW_SRVR04_disable.cfg
SiebGW_SRVR04_enable.cfg
SiebGW_SRVR03_disable.sh
SiebGW_SRVR03_enable.sh
SiebGW_SRVR04_disable.sh
SiebGW_SRVR04_enable.sh
SiebSRV_SRVR03_disable.cfg
SiebSRV_SRVR03_enable.cfg
SiebSRV_SRVR04_disable.cfg
SiebSRV_SRVR04_enable.cfg
SiebSRV_SRVR03_disable.sh
SiebSRV_SRVR03_enable.sh
SiebSRV_SRVR04_disable.sh
```

SiebsRV\_SRVR04\_enable.sh

*Example files:*

**SiebsRV\_SRVR03\_disable.cfg**

```
EXEC_SERVERMGR = /var/opt/OV/bin/instrumentation/siebspi_mgr
SPI.CFG = /opt/OV/siebspi/conf/spi.cfg
EXEC_OPCTEMPLATE = /opt/OV/bin/OpC/opctemplate
# What should be added/removed from SPI for Siebel configuration in
spi.cfg
Remove parameter: SERVERS_ON_HOST = pcrm_uvg
Remove parameter: SIEBEL_SERVER_ROOT_PATH = /siebelgw/procrm03/siebsrvr
Remove parameter: SIEBEL_SRVR_MNGR = . /siebelgw/procrm03/siebsrvr/
siebenv.sh; srvmgr -s pcrm_uvg
# Which specific templates should be enabled/disabled
Disable template: SIEBSPI_CHECK_TASKS_EXT
Disable template: SIEBSPI_COMP_STATUS_EXT
Disable template: SIEBSPI_CONF_UPD_EXT
Disable template: SIEBSPI_DB_CONNECTIVITY
Disable template: SIEBSPI_DB_LOGIN_PERFORMANCE
Disable template: SIEBSPI_DB_LOGIN_TIME
Disable template: SIEBSPI_DB_TRANSACTION_TIME
Disable template: SIEBSPI_DB_TRANS_PERFORMANCE
Disable template: SIEBSPI_ECOMM_WIRELESS_COMPONENT
Disable template: SIEBSPI_EIM_COMPONENT
Disable template: SIEBSPI_FS_MGR_COMPONENT
# Triggers writing of updated configuration into spi.cfg
Write SPI.CFG
# Restarting of SPI for Siebel Request server service/daemon.
# Script stops service in case SIEBEL_SRVR_MNGR and
SIEBEL_GATEWAY_ROOT_PATH are empty
Restart SIEBSPI_SVC
SiebsRV_SRVR03_disable.sh
/opt/OV/nonOV/perl/a/bin/perl /opt/OV/siebspi/cluster/
siebspi_cluster.pl -cfg_file /var/opt/OV/bin/instrumentation/
SiebsRV_SRVR03_disable.cfg
```

4. Copy all these files on the HPOM management server to:  
/var/opt/OV/share/databases/OpC/mgd\_node/customer/<os\_machine\_type>/monitor/
5. Deploy monitors to managed nodes in cluster.
6. Stop the HPOM agent (DCE agent only):  
opcagt -kill
7. Restart the HPOM agent and verify the status of opcagm:  
opcagt -start  
opcagt -status
8. Test failovers and verify if SPI for Siebel adequately updates configuration and enables/disables policies.

---

**NOTE**

---

**For an example of a typical configuration file, refer to:  
<SPI for Siebel install dir>\doc\cluster\_example**

Refer to the following HP Operations Manager and Siebel documentation for additional information:

- *HP Operations Manager Online help*, specifically the section on Managing cluster-aware applications
- *TECHNICAL NOTE 0380: Siebel eBusiness Applications on Sun Cluster*
- *TECHNICAL NOTE 0368: Siebel eBusiness Applications on Veritas HA Solution Stack*

---

## Installing Reports

To install and configure SPI for Siebel - Reports, perform the following steps:

1. Where HP Reporter or HPOM/W Management server is installed, login to your Windows machine as the user with administrator permissions.
2. Make sure that HP Reporter is correctly installed on your system.
3. Copy the `SPIforSiebel-Reports_03.21.exe` self extracting package from the following location on the Management Server to the HP Reporter system:

`<ovowShareInstallDir>\siebspi\reports\`

On HPOM for Windows version 8.0x, the default location is:

`C:\Program Files\HP\HP BTO Software\Data\shared\SPI-Share\siebspi\reports`

On HPOM for Windows version 7.50, the default location is:

`C:\Program Files\HP OpenView\Data\shared\SPI-Share\siebspi\reports\`

4. Run the package.
5. In the *Select Setup type* window, select one of the following:
  - **HPOM for Unix 7.x**
  - **HPOM for Unix 8.x**
  - **HPOM for Windows 7.0, 7.1, 7.2**
  - **HPOM for Windows 7.50**
  - **HPOM for Windows 8.0 (or higher)**
6. Verify the installation (Reporter only). To verify the installation, start HPOM Reporter on the Reporter system and select Reports. SPI for Siebel must be listed under Reports.

---

## Verify the Reporter Installation

At the end of the installation procedure, verify the installation on the Reporter system:

1. Start HP Reporter.
2. In the Reporter main window, from the **File** menu, select **Configure** then select **Report Packages**.



3. Verify if **SPI for Siebel** is in the *Installed Packages* window.

---

**IMPORTANT**

---

**Begin to use Reports when, after at least two days, performance data is collected on the managed nodes.**

---

**Installing Reports on a Clustered HPOM/W Installation**

If you are installing SPI for Siebel - Reports on HPOM/W running in a cluster, install the reports using the standard installation procedure on the first cluster node only.

- 4.



---

## **Chapter 3**

---

### **Uninstalling SPI for Siebel**

---

---

## Uninstallation Overview

To completely uninstall SPI for Siebel, you must first remove it from the HP Operations Manager managed nodes and then from the HP Operations Manager management server. Although the uninstall process is automatic, some manual steps are required.

To uninstall SPI for Siebel, read and follow all steps described in each of the following sections:

- [“Uninstalling from the Managed Nodes” on page 47](#)  
Detailed steps on how to remove SPI for Siebel from the Managed Nodes.
- [“Uninstalling from the Management Server” on page 49](#)  
Detailed steps on how to remove SPI for Siebel from the Management Server.
- [“Uninstalling from a Reporter/ReporterLite System” on page 52](#)  
Detailed steps on how to remove SPI for Siebel - Reports from a system that contains the HP Reporter/Reporter Lite product.

---

## Uninstalling from the Managed Nodes

To uninstall SPI for Siebel from the managed nodes, perform the following steps:

1. Start the HPOM Console and log in as the HPOM Administrator.
2. In the *Node* tree, select the SPI for Siebel managed node, from which you wish to remove SPI for Siebel. Right-click the selected node and in the menu click **View**, and then **Policy Inventory**.
3. In the right window pane, select and right-click all policies with the SIEBSPI prefix. In the menu click **All Tasks**, and then **Remove from Node**.
4. Expand **SPI for Siebel/SIEBSPI-Maintenance/SIEBSPI-Deinstallation** tools group.
5. To uninstall, select one of the directories and run one of the following tools, depending on the platform of your managed node:
  - **SIEBSPI-UN\*X Nodes/Remove UN\*X**
  - **SIEBSPI-Windows Nodes/Remove WIN**

The SPI for Siebel policies and software are now removed from the selected managed node.

---

### NOTE :

---

**Repeat the procedure for each managed node, where you want to remove SPI for Siebel.**

---

## Uninstalling from the Management Server

Before you uninstall SPI for Siebel on the HPOM management server, make sure you uninstalled all managed nodes first. For instructions refer to chapter [“Uninstalling from the Managed Nodes” on page 47](#).

To uninstall SPI for Siebel on the HPOM management server, perform the following steps:

1. Login to the HPOM management server as the HPOM Administrator.
2. Manually remove the following items:
  - The SPI for Siebel policy group (refer to [“Removing SPI for Siebel Policy Group and Policies” on page 50](#))
  - The SPI for Siebel tools group (refer to [“Removing the SPI for Siebel Tools Group” on page 50](#))
  - The Siebel Enterprise services (refer to [“Removing Siebel Enterprise Services” on page 50](#))
3. After you have removed the items listed open *Control Panel* and double-click **Add/Remove Programs**. Select **SPI for Siebel 03.10** and click **Remove** to open the uninstallation wizard.
4. Follow the wizard to uninstall the software.
5. Manually remove the following directory:
  - C:\Program Files\HP OpenView\Data\shared\SPI-Share\siebspi on HPOM 7.50
  - C:\Program Files\HP\HP BTO Software\Data\shared\SPI-Share\siebspi on HPOM 8.00

---

## Removing SPI for Siebel Policy Group and Policies

To remove the SPI for Siebel policy group and policies, perform the following steps:

1. Select **Policy Management** and then **Policy groups**, and then right-click **SPI for Siebel** and **Delete**.
2. Select **Policy Management** and then **Policies grouped by type** if you are using HPOM/W 7.50 or **Agent policies grouped by type** if you are using HPOM/W 8.00. For the **Measurement Threshold** policy group in the right side window scroll to all Names that have the prefix SIEBSPI. Select and right-click all these names.

3. In the menu, select **All Tasks**, and then **Delete from Server**. The *Confirm Policy Delete* dialog box opens. Click **Yes** to confirm the selected action.
4. Repeat the steps 2 and 3 above, replacing the **Measurement Threshold** policy group with the **Logfile Entry** and then **Open Message Interface** policy group.

---

## Removing the SPI for Siebel Tools Group

To remove the **SPI for Siebel** tools group, perform the following steps:

1. Select the **Tools** folder and in the menu bar click **Action**.
2. Click **Configure** and then **Tools**. The *Configure Tools* window opens.
3. In the *Configure Tools* window, right-click **SPI for Siebel** and select **Delete**. The *Confirm Delete* dialog box opens.
4. Click **Yes** to delete the **SPI for Siebel** tools group.

---

## Removing Siebel Enterprise Services

To remove Siebel enterprise services, perform the following steps:

1. Select the **Services** folder and in the menu bar click **Action**.
2. Click **Configure** and then **Services**. The *Configure Services on* window opens.
3. In the *Configure Services on* window, expand **Applications** and select **Siebel Enterprises**, then click **Delete**.
4. Click **Yes** to delete the Siebel Enterprise services.

---

## Uninstalling from a Reporter/ReporterLite System

To uninstall SPI for Siebel - Reports from a system that contains the HP Reporter/Reporter Lite product, perform the following steps:

1. Login to your Windows machine where the HP Reporter/ReporterLite is installed as the user with administrator permissions.
2. Open Control Panel and double-click **Add/Remove Programs**.
3. Select **SPI for Siebel - Reports 03.21** and click **Change/Remove** to uninstall the SPI for Siebel - Reports.



---

## Appendix A

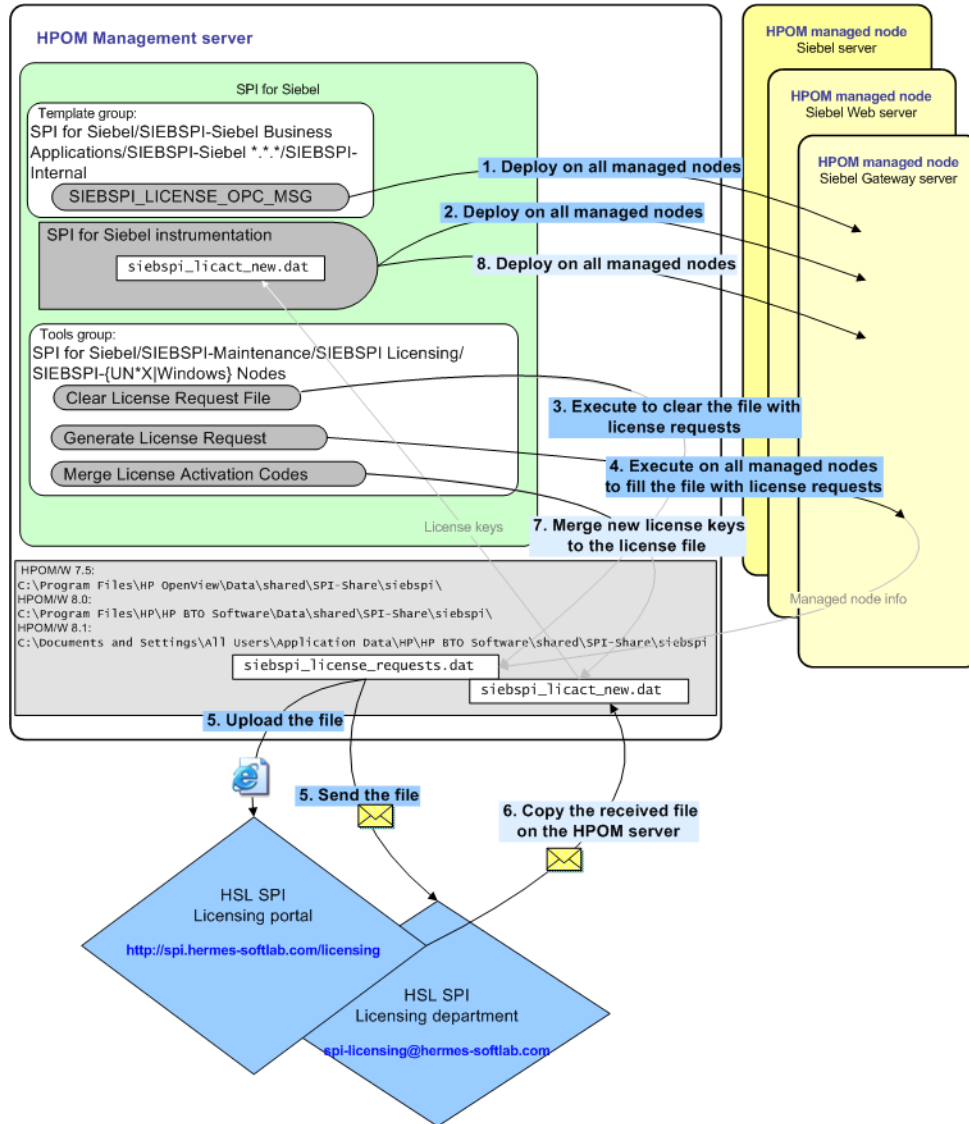
---

## Licensing

---

## Licensing Overview

This appendix provides visual overview of the licensing procedure.



For detailed instructions on how to perform the licensing procedure, see [“Licensing”](#) on page 36.

