

# HP Operations Manager SiteScope Administration Integration

for the UNIX® Operating System

Software Version: 1.00

---

## Installation Guide

Document Release Date: 4 July 2008

Software Release Date: July 2008



## Legal Notices

### Warranty

The only warranties for HP products and services are set forth in the express warranty statements accompanying such products and services. Nothing herein should be construed as constituting an additional warranty. HP shall not be liable for technical or editorial errors or omissions contained herein.

The information contained herein is subject to change without notice.

### Restricted Rights Legend

Confidential computer software. Valid license from HP required for possession, use or copying. Consistent with FAR 12.211 and 12.212, Commercial Computer Software, Computer Software Documentation, and Technical Data for Commercial Items are licensed to the U.S. Government under vendor's standard commercial license.

### Copyright Notices

© Copyright 2008 Hewlett-Packard Development Company, L.P.

### Trademark Notices

Java™ and all Java based trademarks and logos are trademarks or registered trademarks of Sun Microsystems, Inc. in the U.S. and other countries.

Solaris® is a trademark or registered trademark of Sun Microsystems, Inc. in the U.S. or other countries.

UNIX® is a registered trademark of The Open Group.

### Open Source Notices

This software uses Perl module TreePP.pm, Copyright © 2006 Yusuke Kawasaki. All rights reserved. This program is free software; you can redistribute it and/or modify it under the same terms as Perl itself.

**<http://search.cpan.org/~kawasaki/XML-TreePP-0.19/lib/XML/TreePP.pm>**

### Audience

This guide is intended for software installers and administrators of HP Operations Manager and SiteScope environments.

## Documentation Updates

This guide's title page contains the following identifying information:

- Software Version number, which indicates the software version.
- Document Release Date, which changes each time the document is updated.

To check for recent updates, or to verify that you are using the most recent edition of a document, go to:

**<http://h20230.www2.hp.com/selfsolve/manuals>**

This site requires that you register for an HP Passport and sign-in. To register for an HP Passport ID, go to:

**<http://h20229.www2.hp.com/passport-registration.html>**

Or click the **New users - please register** link on the HP Passport login page.

You will also receive updated or new editions if you subscribe to the appropriate product support service. Contact your HP sales representative for details.

## Support

You can visit the HP Software Support web site at:

**<http://www.hp.com/go/hpsoftwaresupport>**

This web site provides contact information and details about the products, services, and support that HP Software offers.

HP Software Support Online provides customer self-solve capabilities. It provides a fast and efficient way to access interactive technical support tools needed to manage your business. As a valued support customer, you can benefit by using the HP Software Support web site to:

- Search for knowledge documents of interest
- Submit and track support cases and enhancement requests
- Download software patches
- Manage support contracts
- Look up HP support contacts
- Review information about available services
- Enter into discussions with other software customers
- Research and register for software training

Most of the support areas require that you register as an HP Passport user and sign in. Many also require a support contract.

To find more information about access levels, go to:

**[http://h20230.www2.hp.com/new\\_access\\_levels.jsp](http://h20230.www2.hp.com/new_access_levels.jsp)**

To register for an HP Passport ID, go to:

**<http://h20229.www2.hp.com/passport-registration.html>**

---

# Contents

1	HPOM SiteScope Administration Integration Overview	7
	Supported Versions	7
	Included Software	7
	HPOM SA Integration	8
	HPOM SA Functionality	9
	SAM Admin	9
	SiteScope Adapter	10
	Profiles	10
	Online Help	11
2	Installing the Software	13
	Installation on Clusters	13
	Installation Prerequisites for Management Servers	13
	Core Software	13
	Patches	14
	Applications Stopped During Installation	15
	Installing on HPOM Management Servers	16
	Assigning Applications	21
	Repairing an Installation	21
	Uninstalling from Management Servers	22
	Setting Up Secure HTTPS Communication	25
3	Launching SAM Admin	27
	Launching from the Service Graph	28
	Launching from a Navigation Pane	29
	Index	31



---

# 1 HPOM SiteScope Administration Integration Overview

This document describes prerequisites, installation steps, a feature overview, and user instructions for the HP Operations Manager SiteScope Administration Integration (HPOM SA).

## Supported Versions

The information in this guide applies to the following product versions:

- HPOM for UNIX version 8.xx (patch level 8.30 or higher)
- SiteScope 9.50

## Included Software

The HPOM SA software comes as part of a broader integration package for HP Operations Manager (HPOM) for UNIX.

The integration package contains the following software:

- **HPOM SiteScope Administration Integration**

Contains the following:

- SiteScope Adapter
- HP System Availability Management Administration (SAM Admin)

- **Core HP Software packages**

These are necessary infrastructure component packages.

- **HPOM Incident Web Service**

HPOM Incident Web Service (IWS) is included as part of the package. IWS is not necessary for the HPOM SiteScope Administration Integration.

If you specify a **Custom** installation type during the installation process, you can choose not to install IWS. For details, see [Installing on HPOM Management Servers](#) on page 16.



To find out how to integrate IWS into HPOM, see the *HP Operations Manager Incident Web Service Integration Guide*.

## HPOM SA Integration

HPOM SA adds the following applications to the HPOM:

- HPOM SiteScope Adapter
- HP System Availability Management (SAM Admin)

The HPOM SiteScope Adapter provides visibility of SiteScope servers and monitors to HPOM. The SiteScope Adapter is initially installed on the HPOM management server, and subsequently deployed to HPOM managed nodes that are also SiteScope servers. HPOM SiteScope Adapter provides SiteScope tool capability from the HPOM server system, and provides for alert messages based on SiteScope monitor status to be sent to the HPOM message browser.

The integration adds a SAM Admin application that enables you to configure and manage multiple SiteScope instances using SAM Admin from within HPOM.

Information for SiteScope instances is stored in the HPOM database. You can also see health and status views of SiteScope instances.

The integration provides access to a SAM Admin window that opens when you start the SAM Admin application. The SAM Admin window shows a summary of all SiteScope servers accessible to the HPOM system. In this window, you can manage SiteScope configurations for one or more SiteScope servers centrally from the HPOM console. SAM Admin facilitates the transfer of configuration information from one SiteScope instance to another.



# HPOM SA Functionality

This section contains a brief summary of the functionality that SiteScope Administration Integration provides you with.



For details about this functionality, see the *HP SiteScope Help*, which covers both HP System Availability Management Administration and SiteScope functionality.

You can access the *SiteScope Help* from the HPOM console. See [Online Help on page 11](#).

## SAM Admin

The SAM Admin application enables you to configure and manage SiteScope instances using the following tools:

- **New SiteScope**

Add a new SiteScope instance to the list of SiteScopes that are accessible to the HPOM system.

- **Edit SiteScope**

Edit the properties which determine how a SiteScope server connects to the HPOM system.

- **Delete SiteScope**

Delete a SiteScope instance from the HPOM system.

- **Global Search and Replace**

Update properties across multiple SiteScope instances using the Global Search and Replace wizard.

- **Sync SiteScopes**

Synchronize settings between different SiteScope instances by copying the settings configured for a SiteScope instance to other SiteScope instances using the Sync SiteScopes wizard.

- **Copy and Paste between SiteScopes**

Copy configuration data from one SiteScope instance to another by using the Copy to other SiteScope and Paste to other SiteScope options in the SiteScope objects context menu.

## SiteScope Adapter

The HPOM SiteScope Adapter provides visibility of SiteScope servers and monitors to HPOM. It leverages HPOM's service discovery technology for automatic and dynamic mapping of service models, automatic recognition of SiteScope monitors, and regular maintenance and upgrades to the service map.

The SiteScope Adapter also provides SiteScope tools for execution from the HPOM console.

For details about the SiteScope Adapter, including deployment, tools, instructions for use, and troubleshooting, see the *SiteScope Adapter User's Guide*.

## Profiles

Each SiteScope instance has a profile. All SiteScope profiles are saved automatically to a file. A profile for a newly added SiteScope instance is appended automatically to the profiles file. Similarly, when a SiteScope instance is deleted, its profile is automatically removed from the profiles file.

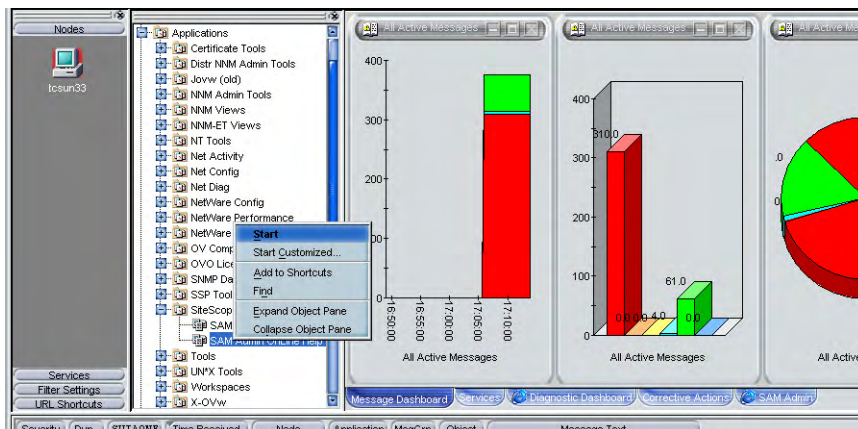
# Online Help

Details of the SAM Admin functionality for configuring SiteScope instances, now integrated into HPOM, are described in the *HP SiteScope Help*. The *HP SiteScope Help* also covers SiteScope functionality.

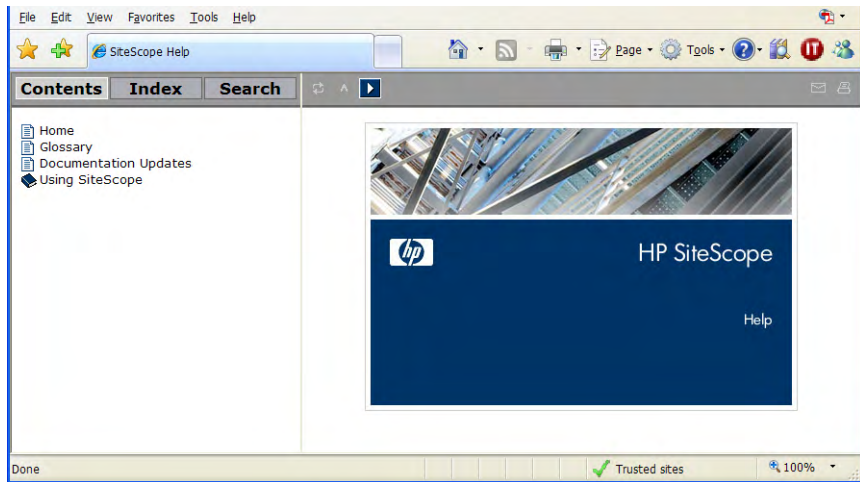
- ▶ The *HP SiteScope Help* documents SiteScope and SAM Admin and their integration with HPOM. SiteScope also integrates with HP Business Availability Center (BAC) software, and details of this integration, while not relevant to HPOM users, are also provided in the *HP SiteScope Help*.

To access the *HP SiteScope Help* from the HPOM console, follow these steps:

- 1 In the navigation pane, expand the SiteScope SAM ADMIN application group.
- 2 Right-click **SAM Admin Online Help**, then select **Start**.



This opens the *HP SiteScope Help* in a web browser.



---

## 2 Installing the Software

The application installer for the HPOM SA integration package installs the software, described in [Chapter 1, HPOM SiteScope Administration Integration Overview](#), onto the HPOM host system. This chapter guides you through all the required steps. This process should take approximately 20 minutes to complete.

### Installation on Clusters



You must install HPOM SA on each cluster node where HPOM is installed. Otherwise, if you install HPOM SA on a non-active cluster node you will get a warning message `SERVER Aborted`. This is because the process `ovcs` is not able to run on a non-active cluster node.

### Installation Prerequisites for Management Servers

Prerequisites for installing HPOM SA on HPOM management servers are listed in this section.

#### Core Software

Make sure the following software is installed:

- HPOM for UNIX 8.xx (patch level 8.30 or higher)
- The HPOM Installation software package includes the following necessary components:

- OvJREB
- OvTomcatB
- OvXpl

The package installs them automatically during the installation process.

## Patches

The minimum patch levels that you need to install are listed in this section.

See the support matrix for the latest patches required for your software version at the following address:

**<http://support.openview.hp.com/selfsolve/document/KM323488>**

- **HP-UX IA-64 11.23**

- HPOM for UNIX server patch level 8.30 or higher:

Patch ID: PHSS\_38200

Title: s700\_800 11.X OV OVO8.X IA-64 consolidated server A.08.30

- Java Server Configuration API server patch for Operations Manager 8.xx:

Patch ID: PHSS\_38204

Title: s700\_800 11.X OV OVO8.X IA-64 Java Config API A.08.30

- Make sure you install all patches listed for your system configuration. See the section “HP-UX patches required for Java” on the Java Technology HP-UX Patch Information page at the following address:

**<http://h18012.www1.hp.com/java/patches/index.html>**

- **HP-UX PA-RISC 11.11 Onwards**

- HPOM for UNIX server patch level 8.30 or higher:

Patch ID: PHSS\_38201

Title: s700\_800 11.X OV OVO8.X PA-RISC consolidated server A.08.30

- Java Server Configuration API server patch for Operations Manager 8.xx:

Patch ID: PHSS\_38205

Title: s700\_800 11.X OV OVO8.X PA-RISC Java Config API A.08.30

- Make sure you install all patches listed for your system configuration. See the section “HP-UX patches required for Java” on the Java Technology HP-UX Patch Information page at the following address:

**<http://h18012.www1.hp.com/java/patches/index.html>**

- **Sun Solaris**

- HPOM for UNIX server patch level 8.30 or higher:

Patch ID: ITOSOL\_00673

Title: sparcsOL 2.X OV OVO8.X consolidated server A.08.30

- Java Server Configuration API server patch for Operations Manager A.08.x:

Patch ID: ITOSOL\_00675

Title: sparcsOL 2.X OV OVO8.X Java Config API A.08.30

## Applications Stopped During Installation

The following applications are stopped and restarted by the application installation process. The restarts are performed for install, uninstall and repair.

- Local HPOM agent
- HPOM for UNIX server processes
- All `ovc` applications

## Installing on HPOM Management Servers

Installation packages are available as Web downloads for the following management server platforms:

- **HP-UX IA-64**  
ProductImage-HPoprSam-<version>-HPUX11.22\_IPF32-release.tar.gz
- **HP-UX PA-RISC**  
ProductImage-HPoprSam-<version>-HPUX11.0-release.tar.gz
- **Sun Solaris**  
ProductImage-HPoprSam-<version>-SunOS5.7-release.tar.gz

To install the software on the HPOM management server, follow these steps:

- 1 Download the installation package from the following location:  
**ftp://ovweb.external.hp.com/pub/cpe/ito/OM-Installation**
- 2 In a shell, navigate to the temporary folder on the HPOM for UNIX management server that contains the installation package you downloaded.
- 3 Type the following command to decompress the installation package:  
**gunzip <package name>.tar.gz**
- 4 Type the following command to untar the installation package:  
**tar xvf <package name>.tar**
- 5 To start the installation process for the package, type the following command:

**HPoprSam\_<version>\_setup.bin**

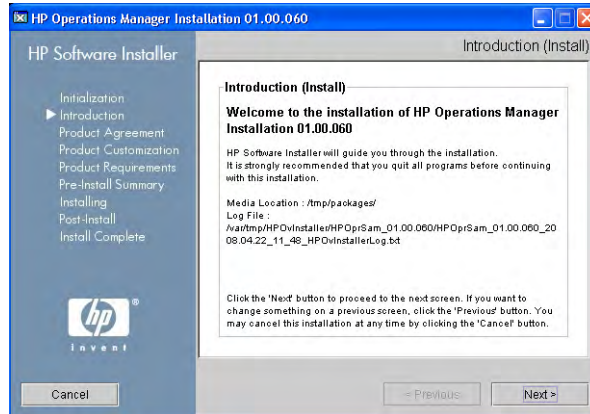
The application installer opens. Follow the on-screen instructions and proceed through the installation process using the **Next** and **Done** buttons. On the left hand side of the installation window, an arrow indicates the progress of the installation.



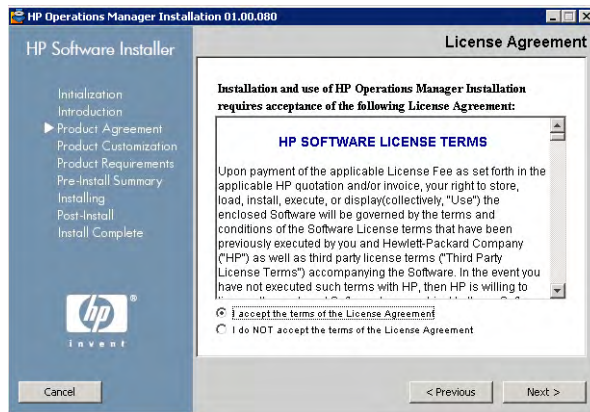
If SiteScope Adapter is already installed on the HPOM system, the application installer replaces it with the new version in the integration package.



The application installer checks if individual software components already exist on the system, and installs them if they are not found, or overwrites existing, older versions. You can specify which components you would like to install by choosing a Custom installation type.



6 Read and accept the Licence agreement and click Next.



7 Select the installation type:

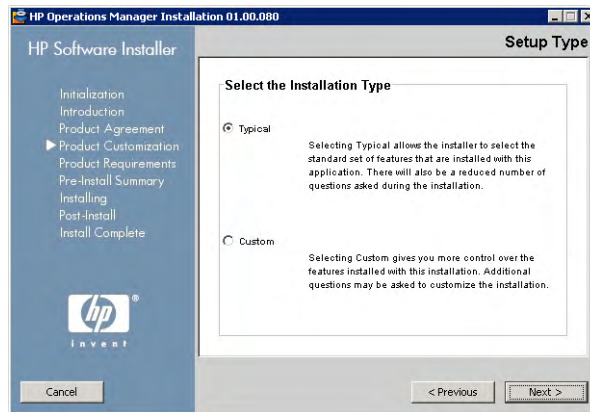
- **Typical**

Installs the standard set of features for this application. This installs Core HP Software packages, HPOM SiteScope Integration and HPOM Incident Web Service by default.

- **Custom**

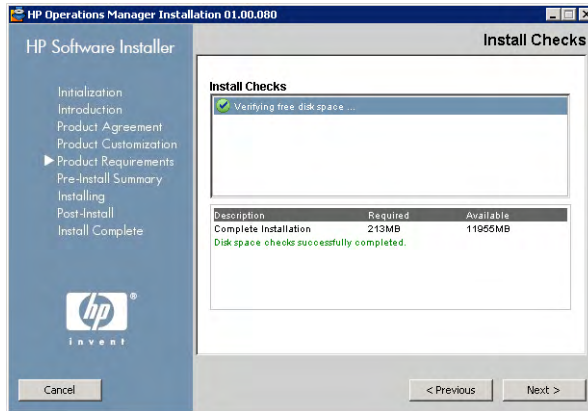
Provides more control over the features installed with this application. Core HP Software packages always get installed, but you can choose not to install HPOM Incident Web Service.

8 Select **Next**.



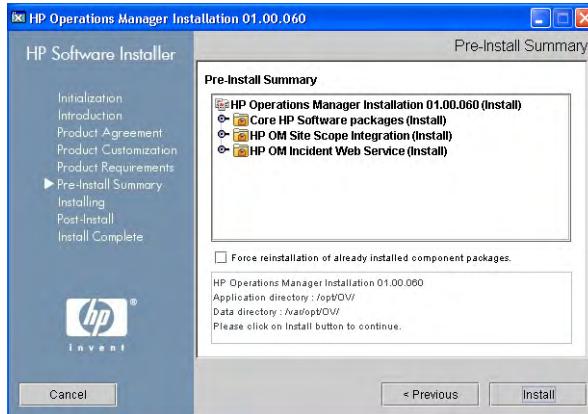
The pre-install checks, such as verifying the available free disk space, are executed.

- 9 If they complete successfully, click **Next**.



The pre-install summary lists the components to be installed.

- 10 Click **Install**.



The software installer starts installing files onto the host system. Overall progress is displayed along with the name of the package being currently installed.



As the final stage of the installation process, the software installer creates the uninstaller.



After the installation process is finished, the Installation Complete window opens showing a summary of the installation paths used.

You can also access the installation log file from the link in this window and open it in a web browser.

You can see the installed packages from the Details tab.

- 11 Click **Done** to close the installation program.

## Assigning Applications

After installation, the following application folders are created:

- **SiteScope**

The SiteScope application folder contains the applications Configure SiteScope Directory, Copy SiteScope-OVO Alarm Scripts, Start SiteScope, and Stop SiteScope.

See the *SiteScope Adapter User's Guide* for more details.

- **SiteScope SAM Admin**

The SiteScope SAM Admin application folder contains the applications SAM Admin, and SAM Admin Online Help.

- **Workspaces**

The Workspaces application group is intended as a customizable space for working with SiteScope and SAM Admin. By default, Workspaces contains the application group SAM Admin.

Assign these application groups as appropriate to the responsible operators.

For information about assigning applications, refer to the HP Operations Manager for UNIX documentation.

## Repairing an Installation

If your installation is damaged, execute the installation procedure again and select the **Repair** option in the Maintenance Selection window. The damaged files are replaced and the application should be operational again. Your configuration files are not affected by the repair.

# Uninstalling from Management Servers

- ▶ If you plan to remove your entire HPOM installation from the management server system, make sure you remove SiteScope Adapter and SAM Admin before uninstalling HPOM.

To uninstall the HPOM SA software from HPOM management servers, you need to run the software installer again.

- ▶ The software installer uninstalls the software packages that it installed as part of the web download. Note that the uninstallation procedure removes the SiteScope Adapter, even if the SiteScope Adapter was already installed on the HPOM system before you installed the HPOM SA package.

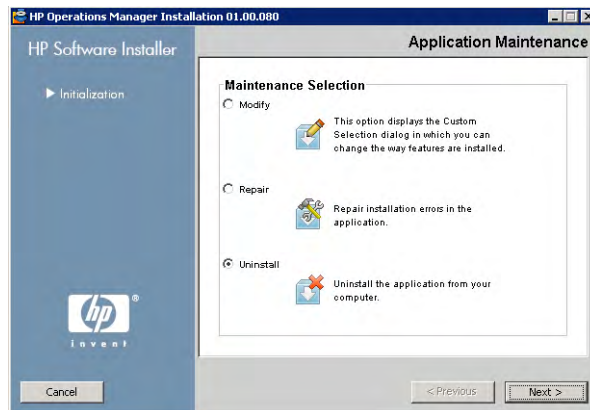
To uninstall the HPOM SiteScope Administration Integration software, follow these steps:

- 1 Type the following command:

```
HPoprSam_<version>_setup.bin
```

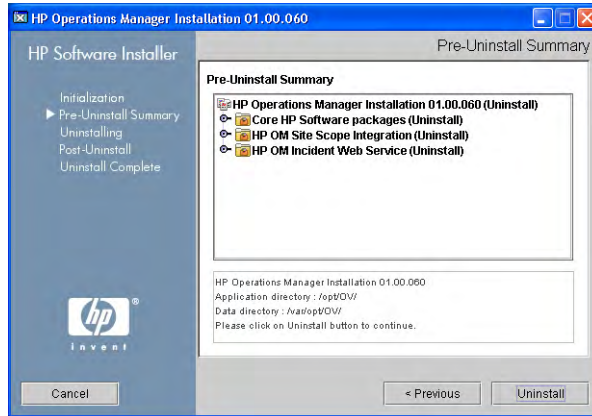
The application installer starts.

- 2 Click **Next** to continue.
- 3 In the Application Maintenance window, select **Uninstall**, then click **Next**.



The pre-uninstallation summary lists the components to be uninstalled.

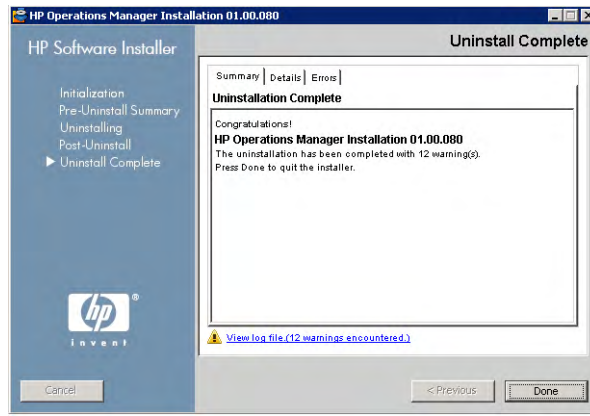
4 Click **Uninstall**.



The HP Software Installer starts to uninstall files from the host system. Overall progress is displayed along with the name of the package currently being uninstalled.



After the installation process is finished, the Uninstallation Complete window opens confirming uninstallation.



You can also access the uninstallation log file from the link in this window and open it in a web browser.

- 5 Click **Done** to close the uninstallation program.
- 6 After uninstallation, there are some items that are not removed, and are still visible in the user interface, even though there is no functionality behind them. You need to remove the following items manually from the HPOM console:
  - **SiteScope SAM Admin** application folder, and the sub-groups **SAM Admin** and **SAM Admin Online Help**.
  - **SiteScope** application folders, and SiteScope Adapter tools and policy groups

Refer to the HPOM for UNIX Server documentation for information regarding removal of node groups and application folders.



# Setting Up Secure HTTPS Communication

To allow secure HTTPS communication between ovTomcatB and SiteScope, perform the following steps. You need to do this for each SiteScope instance for which you want to set up secure HTTPS communication. You can do this before or after installing the software package.

- 1 Copy the file `siscert.cer` from the SiteScope server to the HPOM management server.
- 2 If you are *not* running SiteScope in SSL mode, go to step 3.

If you *are* running SiteScope in SSL mode, enter the following command:

```
# /opt/OV/nonOV/jre/b/bin/keytool -import -alias  
siscertalias -keystore \  
/opt/OV/nonOV/jre/b/lib/security/cacerts -storepass  
changeit -file siscert.cer
```

- 3 Stop and restart ovTomcatB by entering these commands:

```
# ovc -stop ovtomcatB  
# ovc -start ovtomcatB
```



---

## 3 Launching SAM Admin

Following installation, the SiteScope SAM Admin application group is created. This group contains the following applications:

- SAM Admin
- SAM Admin Online Help

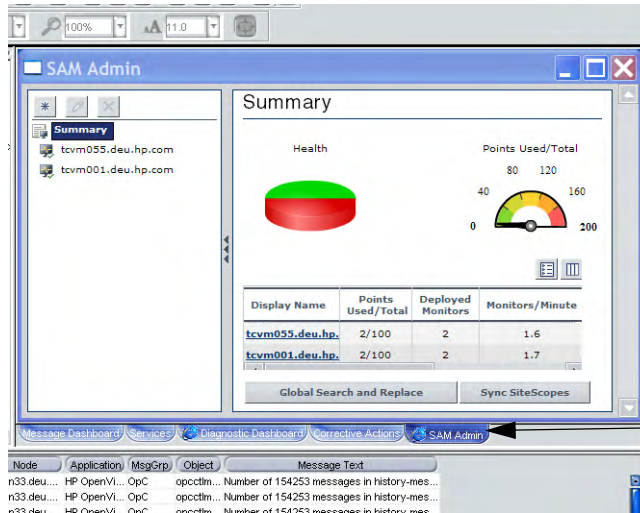
For instructions about how to access the SAM Admin Online Help, see [Online Help on page 11](#).

Examples of how to launch the application follow.

You can launch the SAM Admin application directly from the HPOM console. You can do this either from the service graph or from the list of applications in the navigation pane. The SAM Admin application opens a window in SAM Admin. Here, you can see a list of all SiteScope instances available to the HPOM system, and configure them from your HPOM console.

# Launching from the Service Graph

To launch the SAM Admin summary window from the service graph, click the **SAM Admin** button.

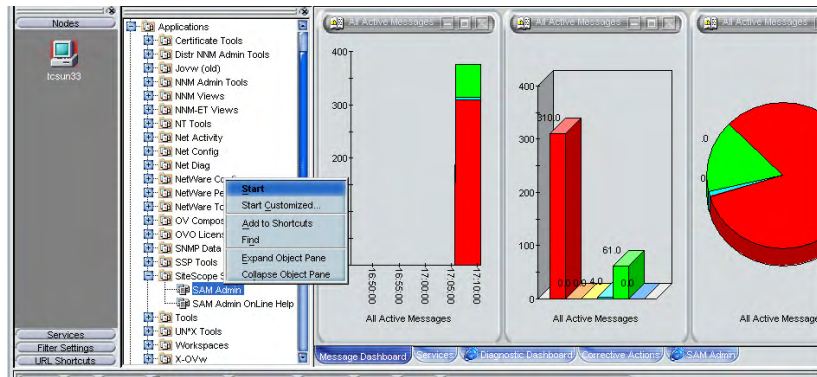


SAM Admin  
button

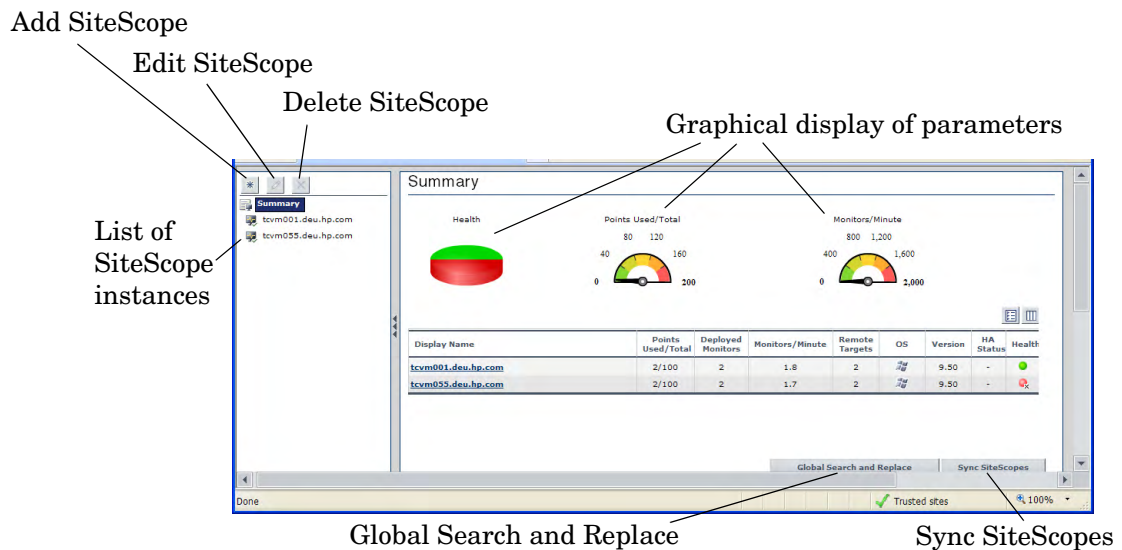
# Launching from a Navigation Pane

To launch the SAM Admin summary window from the navigation pane, follow these steps:

- 1 In the navigation pane, expand the SiteScope SAM ADMIN application group.
- 2 Right-click the **SAM Admin** application, then select **Start**.



This launches the SAM Admin summary window in a Web browser.





# Index

## A

- application installer, starting, 16
- applications
  - assigning, 21
  - SAM Admin, 8
    - functionality, 9
    - launching
      - from Navigation Pane, 29
      - from Service Graph, 28
  - SiteScope Adapter, 8, 10
  - started during installation, 15
  - stopped during installation, 15
- assigning applications, 21

## C

- clusters, installation on, 13
- custom, installation type, 18

## D

- download packages, 16

## F

- folders
  - SiteScope, 21
  - SiteScope SAM Admin, 21
  - Workspaces, 21

## H

- HPOM Incident Web Service. *See* IWS

## HPOM SA

- functionality, 9
- integration overview, 8

## HP System Availability Management Administration. *See* SAM Admin

## HP-UX IA-64

- patches, 14

## HP-UX PA-RISC

- patches, 14

## HTTPS

- setting up secure communication, 25

## I

### installation

- custom, 8
  - deselecting IWS, 8
  - on cluster nodes, 13
  - prerequisites, 13 to 15
  - procedure, 16 to 21
  - repairing, 21
  - required patches
    - HP-UX IA-64, 14
    - HP-UX PA-RISC, 14
    - Solaris, 15

### type

- custom, 18
- typical, 18

### installing

- HPOM DMA, 13

integration  
  functionality, 9  
  overview, 8  
  package contents, 7

IWS, 7

## L

license agreement, 17

## O

online help  
  SiteScope/SAM Admin, how to access, 11

OvJREB, 14

OvTomcatB, 14  
  HTTPS communication with SiteScope,  
  25  
  stopping and restarting, 25

OvXpl, 14

## P

package  
  contents, 7  
  web download, 16

patches, 14  
  HP-UX IA-64, 14  
  HP-UX PA-RISC, 14  
  Solaris, 15

prerequisites  
  installation, 13 to 15  
  patches  
    HP-UX IA-64, 14  
    HP-UX PA-RISC, 14  
    Solaris, 15

profiles, 10

## R

repairing an installation, 21

## S

SAM Admin, 7, 8  
  functionality, 9  
  launching  
    from Navigation Pane, 29  
    from Service Graph, 28  
  online help  
    accessing, 11

SiteScope

  Adapter, 7, 8  
  overview, 10  
  folder, 21  
  HTTPS communication with ovTomcatB,  
  25  
  online help, accessing, 11  
  profiles, 10

SiteScope SAM Admin folder, 21

Solaris

  patches, 15

starting

  applications during installation, 15

stopping

  applications during installation, 15

supported versions, 7

## T

typical, installation type, 18

## U

uninstallation procedures, 22 to 24

## V

versions, supported, 7

## W

Workspaces  
  folder, 21