

HP Business Process Testing for SAP Applications

Software Version: 2.50

Installation Guide

Manufacturing Part Number: T9278-90002

Document Release Date: May 2008

Software Release Date: May 2008



Legal Notices

Warranty

The only warranties for HP products and services are set forth in the express warranty statements accompanying such products and services. Nothing herein should be construed as constituting an additional warranty. HP shall not be liable for technical or editorial errors or omissions contained herein.

The information contained herein is subject to change without notice.

Restricted Rights Legend

Confidential computer software. Valid license from HP required for possession, use or copying. Consistent with FAR 12.211 and 12.212, Commercial Computer Software, Computer Software Documentation, and Technical Data for Commercial Items are licensed to the U.S. Government under vendor's standard commercial license.

Third-Party Web Sites

HP provides links to external third-party Web sites to help you find supplemental information. Site content and availability may change without notice. HP makes no representations or warranties whatsoever as to site content or availability.

Copyright Notices

© 1992 - 2008 Mercury Interactive (Israel) Ltd.

Trademark Notices

Adobe® and Acrobat® are trademarks of Adobe Systems Incorporated.

Intel®, Pentium®, and Intel® Xeon™ are trademarks of Intel Corporation in the U.S. and other countries.

Java™ is a US trademark of Sun Microsystems, Inc.

Microsoft®, Windows®, Windows NT®, and Windows® XP are U.S registered trademarks of Microsoft Corporation.

Oracle® is a registered US trademark of Oracle Corporation, Redwood City, California.

Unix® is a registered trademark of The Open Group.

Documentation Updates

This manual's title page contains the following identifying information:

- Software version number, which indicates the software version
- Document release date, which changes each time the document is updated
- Software release date, which indicates the release date of this version of the software

To check for recent updates, or to verify that you are using the most recent edition of a document, go to:

<http://h20230.www2.hp.com/selfsolve/manuals>

Support

You can visit the HP Software Support Web site at: **www.hp.com/go/hpsoftwaresupport**

HP Software online support provides an efficient way to access interactive technical support tools. As a valued support customer, you can benefit by using the support site to:

- Search for knowledge documents of interest
- Submit and track support cases and enhancement requests
- Download software patches
- Manage support contracts
- Look up HP support contacts
- Review information about available services
- Enter into discussions with other software customers
- Research and register for software training

Most of the support areas require that you register as an HP Passport user and sign in. Many also require a support contract. To find more information about access levels, go to: **http://h20230.www2.hp.com/new_access_levels.jsp**

To register for an HP Passport ID, go to: **<http://h20229.www2.hp.com/passport-registration.html>**

Table of Contents

Welcome to This Guide	7
How This Guide is Organized.....	7
Additional Online Resources.....	7
Documentation Updates	8
Typographical Conventions.....	9
Chapter 1: Installing the Enterprise Extension	11
The Installation and Setup Process	11
Installing the Enterprise Extension	13
Upgrading a Project to Enterprise Extension 2.50	26
Uninstalling the Enterprise Extension	27
Chapter 2: Setting Up the Enterprise Extension	35
About Setting Up the Enterprise Extension	36
Loading the Enterprise Extension License	36
Enabling the Enterprise Extension.....	37
Installing the SAP Application Importer Component	39
Configuring the SAP Environment	40
Customizing the Enterprise Extension	40

Table of Contents

Welcome to This Guide

Welcome to the HP Business Process Testing Enterprise Extension. The Enterprise Extension adds functionality to HP Quality Center and HP Business Process Testing that enables you to test enterprise applications.

How This Guide is Organized

The HP Business Process Testing Enterprise Extension Installation Guide describes how to install, set up, and configure the Enterprise Extension.

It contains the following chapters:

Chapter 1 Installing the Enterprise Extension

Describes the requirements for installing the Enterprise Extension and how to install the Enterprise Extension on your Quality Center server machine.

Chapter 2 Setting Up the Enterprise Extension

Describes how to set up your Quality Center projects for working with the Enterprise Extension, how to configure your SAP applications, and how to configure Quality Center permissions for the Enterprise Extension.

Additional Online Resources

Troubleshooting and Knowledge Base accesses the Troubleshooting page on the HP Software Support Web site where you can search the Self-solve knowledge base. Choose **Help > Troubleshooting and Knowledge Base**. The URL for this Web site is <http://h20230.www2.hp.com/troubleshooting.jsp>.

HP Software Support accesses the HP Software Support Web site. This site enables you to browse the Self-solve knowledge base. You can also post to and search user discussion forums, submit support requests, download patches and updated documentation, and more. Choose **Help > HP Software Support**. The URL for this Web site is www.hp.com/go/hpssoftwaresupport.

Most of the support areas require that you register as an HP Passport user and sign in. Many also require a support contract.

To find more information about access levels, go to:
http://h20230.www2.hp.com/new_access_levels.jsp

To register for an HP Passport user ID, go to:
<http://h20229.www2.hp.com/passport-registration.html>

HP Software Web site accesses the HP Software Web site. This site provides you with the most up-to-date information on HP Software products. This includes new software releases, seminars and trade shows, customer support, and more. Choose **Help > HP Software Web site**. The URL for this Web site is www.hp.com/go/software.

Documentation Updates

HP Software is continually updating its product documentation with new information.

To check for recent updates, or to verify that you are using the most recent edition of a document, go to the HP Software Product Manuals Web site (<http://h20230.www2.hp.com/selfsolve/manuals>).

Typographical Conventions

This guide uses the following typographical conventions:

UI Elements and Function Names	This style indicates the names of interface elements on which you perform actions, file names or paths, and other items that require emphasis. For example, “Click the Save button.” It also indicates method or function names. For example, “The wait_window statement has the following parameters:”
<i>Arguments</i>	This style indicates method, property, or function arguments and book titles. For example, “Refer to the <i>HP User’s Guide</i> .”
<Replace Value>	Angle brackets enclose a part of a file path or URL address that should be replaced with an actual value. For example, <MyProduct installation folder>\bin.
Example	This style is used for examples and text that is to be typed literally. For example, “Type Hello in the edit box.”
CTRL+C	This style indicates keyboard keys. For example, “Press ENTER.”
[]	Square brackets enclose optional arguments.
{ }	Curly brackets indicate that one of the enclosed values must be assigned to the current argument.
...	In a line of syntax, an ellipsis indicates that more items of the same format may be included. In a programming example, an ellipsis is used to indicate lines of a program that were intentionally omitted.
	A vertical bar indicates that one of the options separated by the bar should be selected.

Welcome to This Guide

1

Installing the Enterprise Extension

This chapter describes how to install the Enterprise Extension.

This chapter includes:

- The Installation and Setup Process on page 11
- Installing the Enterprise Extension on page 13
- Upgrading a Project to Enterprise Extension 2.50 on page 26
- Uninstalling the Enterprise Extension on page 27

The Installation and Setup Process

This section summarizes the Enterprise Extension installation and setup process. The sections following this one provide additional details on each of these steps.

To install and set up the Enterprise Extension:

- 1 Ensure that your Quality Center server and clients meet the minimum requirements.**

For details on supported versions of the below items, see the **System Requirements** section of the *Business Process Testing for SAP Applications Readme*.

Ensure that supported versions of the following items are installed on your Quality Center server:

- ▶ Any required Quality Center patches

Ensure that supported versions of the following items are installed on each Quality Center client that will use the Business Process Testing for SAP Applications:

- ▶ QuickTest Professional, including the Add-in for SAP solutions
- ▶ SAP GUI Client
- ▶ QuickTest Professional Add-in For Business Process Testing

2 Install the QuickTest 9.5 Patch: QTPBPT_00002 for HP QuickTest Professional 9.50 QFE

In the **QuickTest_Professional_Patch** folder on the HP Business Process Testing for SAP Applications CD-ROM, double-click the **QTPBPT_00002_Patch.exe**.

3 Install the Enterprise Extension on your server computer.

For more information, see “Installing the Enterprise Extension” on page 13.

4 Load the Enterprise Extension licence on your Quality Center server.

For more information, see “Loading the Enterprise Extension License” on page 36.

5 Enable the Enterprise Extension in Quality Center Site Administration for every project that requires the Enterprise Extension.

For more information, see “Enabling the Enterprise Extension” on page 37.

6 Install the SAP Application Importer Component on each client computer that will be used to import new application entities to the project.

The Quality Center Application Model module is installed automatically when you install the Enterprise Extension. To import application entities from your SAP application to the Application Model module, the SAP Application Importer Component must be installed on each client computer from which you want to import application entities. For more information on installing the SAP Application Importer Component, see “Installing the SAP Application Importer Component” on page 39.

7 Upgrade any existing projects from Business Process Testing for SAP Applications version 2.0 to version 2.5.

For more information, see “Upgrading a Project to Enterprise Extension 2.50” on page 26.

Installing the Enterprise Extension

This section describes how to install the Enterprise Extension on your Quality Center server computer.

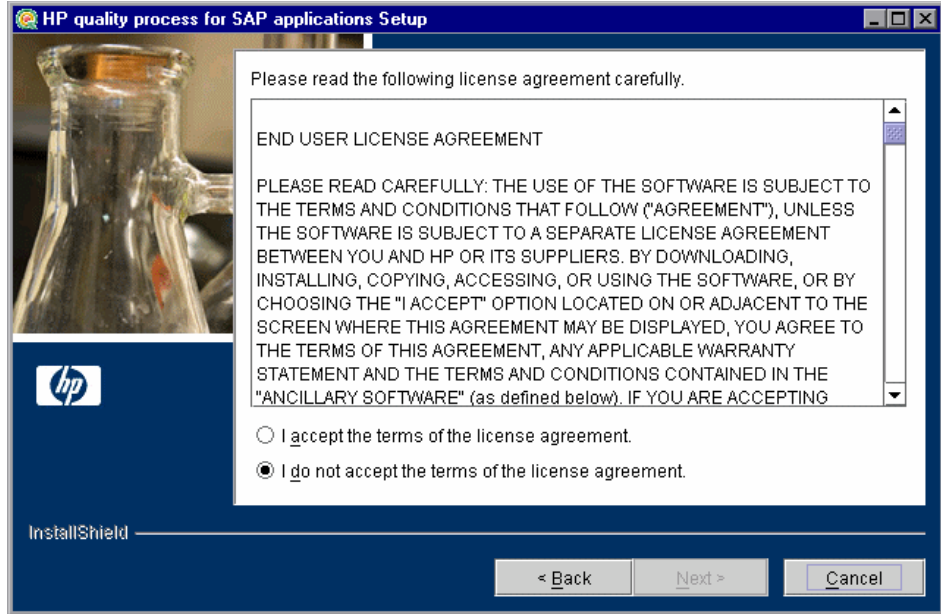
To install the Enterprise Extension:

- 1 From your Business Process Testing for SAP Applications CD, run the appropriate installation file.

Platform	To install:
Windows	Run the <code>setup_win.exe</code> file.
Solaris or Linux (console mode)	<ul style="list-style-type: none"> ➤ Navigate to the CD root directory. ➤ To install on a Solaris platform, type: <code>./setup_solaris.bin -console</code> ➤ To install on a Linux platform, type: <code>./setup_linux.bin -console</code> <p>Note: The console mode installation contains the same text and prompts as the UI mode installation. The text and prompts are displayed in text mode.</p>

Platform	To install:
<p>Solaris or Linux (UI mode)</p>	<ul style="list-style-type: none"> ▶ Make sure that the DISPLAY environment variable is properly configured on the Quality Center host computer, and that the computer from which you are installing is running an X-server (for example, Exceed). For example, to configure the DISPLAY environment variable for TCSHELL: <ol style="list-style-type: none"> 1 Run an X-server (such as eXceed) on your client machine. 2 Login into the Linux/Solaris machine. 3 Run the tcsh command to enter the TCSHELL. 4 At the command line prompt enter <code>setenv DISPLAY 1.1.1.1:0.0</code>, where 1.1.1.1 is the IP address of the client machine running the X-server. 5 Navigate to the CD root directory. ▶ To install on a Solaris platform, type: <pre>./setup_solaris.bin</pre> ▶ To install on a Linux platform, type: <pre>./setup_linux.bin</pre>

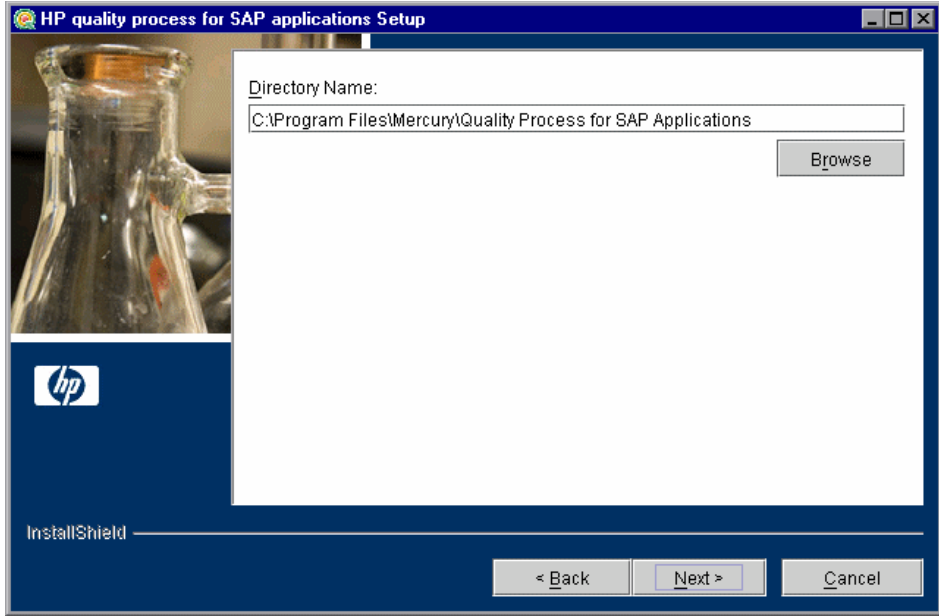
- 2 If you are installing over a previous version of the Enterprise Extension, a message is displayed recommending that you backup any custom configurations before continuing.
- 3 The Welcome screen opens. Click **Next**.

4 The License Agreement screen opens.

Read the license agreement. To accept the terms of the license agreement, select **I accept the terms of the license agreement**.

Click **Next**.

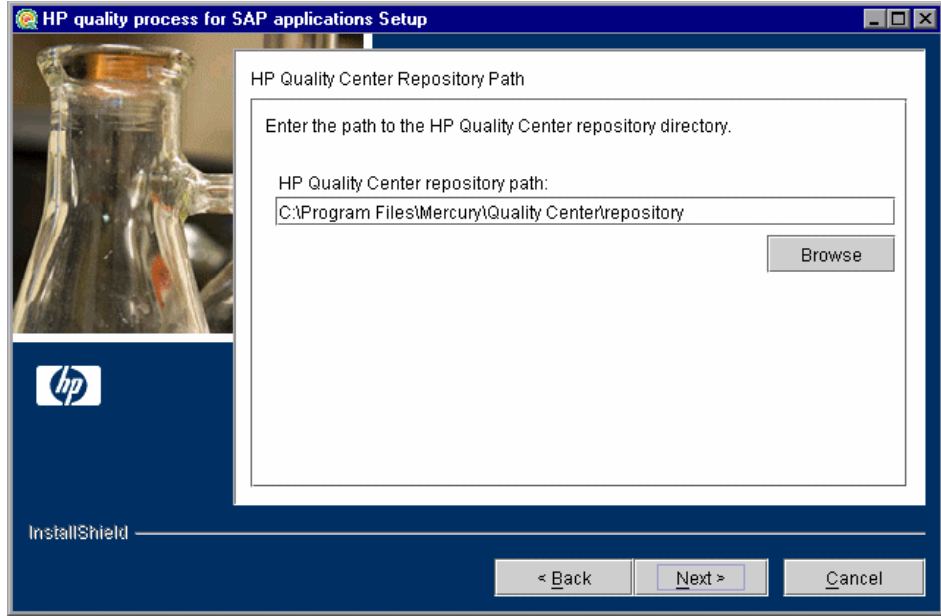
5 The Directory Name screen opens.



Accept the proposed folder for the Enterprise Extension installation or browse to an alternate folder.

Click **Next**.

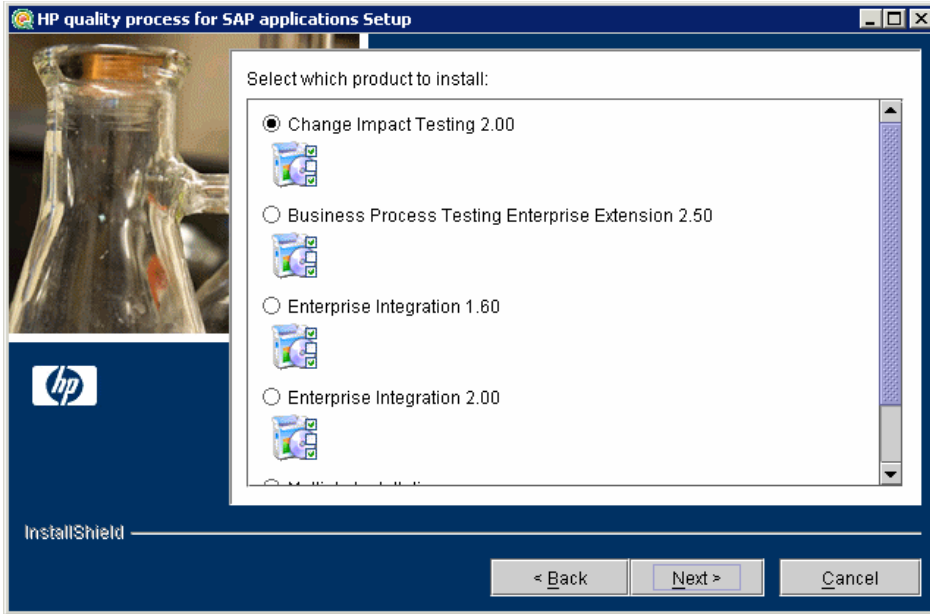
6 The HP Quality Center Repository Path screen opens.



Type the location of the Quality Center repository.

Click **Next**.

7 The Select Which Product to Install screen opens.



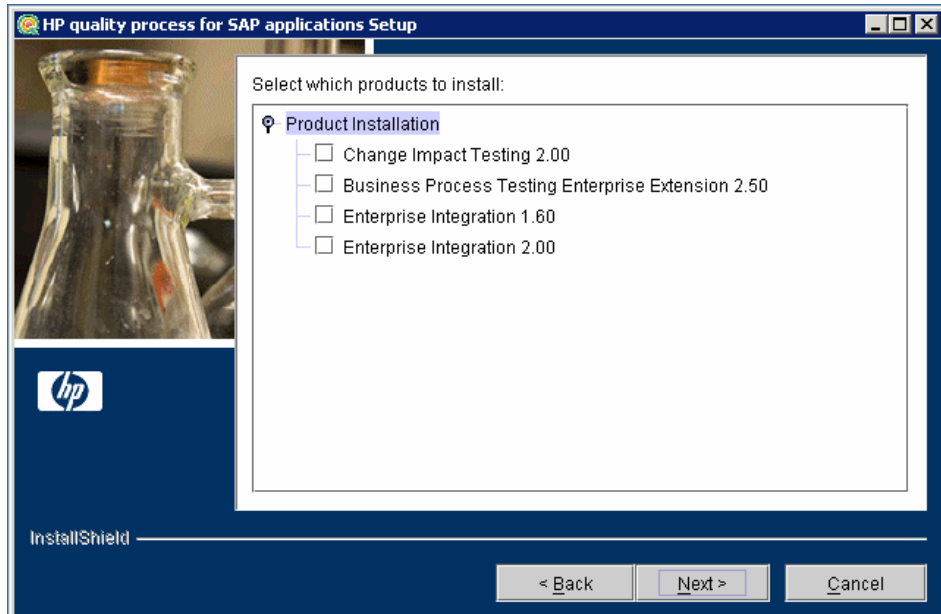
Select whether to install only the Enterprise Extension or the Enterprise Extension together with other Quality Center extensions:

- ▶ To install only the Enterprise Extension, select **Business Process Testing Enterprise Extension 2.50**.
- ▶ To install the Enterprise Extension together with other Quality Center extensions, select **Multiple Installations**.

Click **Next**.

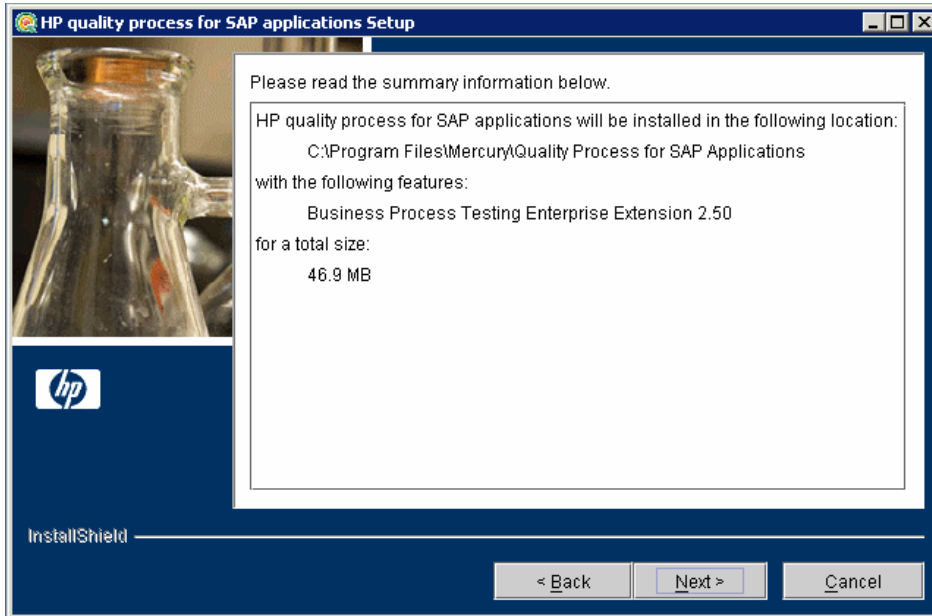
8 If you chose to install only the Enterprise Extension, proceed to step 9.

If you chose **Multiple Installations**, the Select Which Products to Install screen opens.



Select the extensions that you want to install and click **Next**. For information on other extensions, see the documentation for the relevant extension.

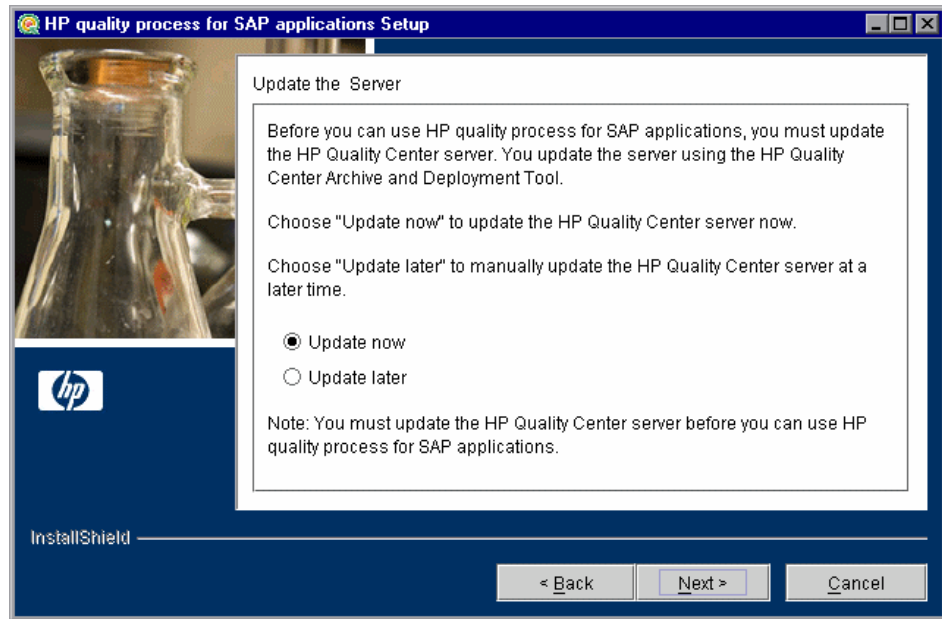
9 The Installation Summary screen opens.



To review or change any settings, click **Back**.

To accept the settings and start the installation, click **Next**. The installation process starts.

- 10** When the installation process is complete, the Update the Server screen opens.



When you update the Quality Center server, the Enterprise Extension files are copied into the opened archive directories (**qcbn.war** and **sabin.war**) in the <**Quality Center Installation**>\application directory. Then the Quality Center Archive and Deployment Tool runs. This tool enables you to update the running Quality Center Web server.

Select an update option:

- **Update now.** Automatically updates the Quality Center archive files and runs the deployment tool.
- **Update later.** Enables you to manually update the Quality Center server at a later time. You must update the Quality Center server before you can use the Enterprise Extension.

Click **Next**.

- 11 If you selected **Update now**, proceed to step 12.

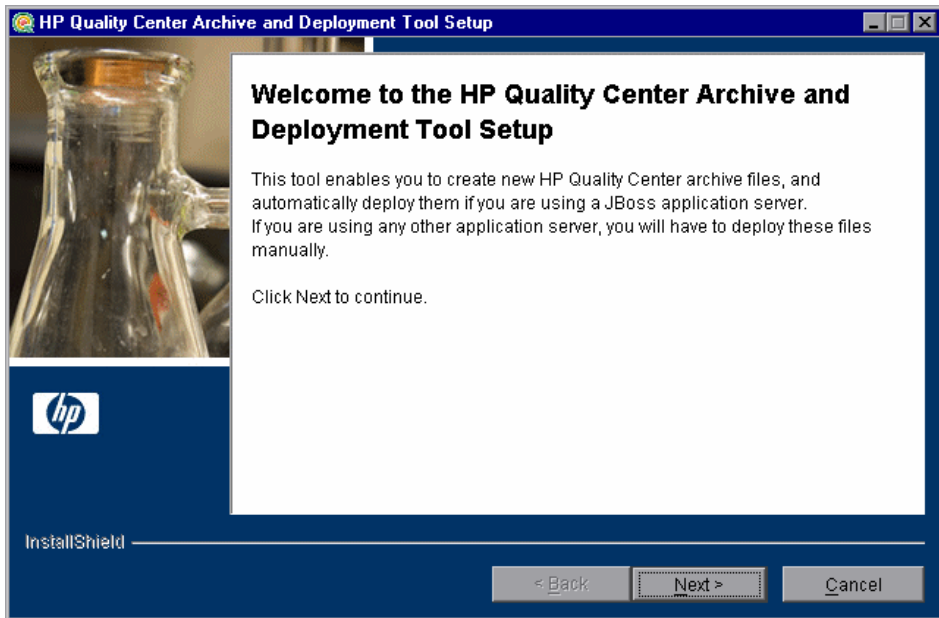
If you selected **Update later**, click **Next** and then click **Finish** to close the installation setup screen. When you are ready to update the application server, run the **deploy.bat** script (or **deploy.sh** for Solaris or Linux) from the **<Enterprise Extension installation>** directory. When running the batch file, specify the Quality Center installation directory and the location of the Quality Center repository, using the format:

```
deploy <Quality Center installation directory> <Quality Center repository directory>
```

For example:

```
deploy "C:\Program Files\Mercury\Quality Center" "C:\Program Files\Mercury\Quality Center\repository"
```

- 12 After clicking **Update now** or manually launching the batch file, the Quality Center Archive and Deployment Tool opens.

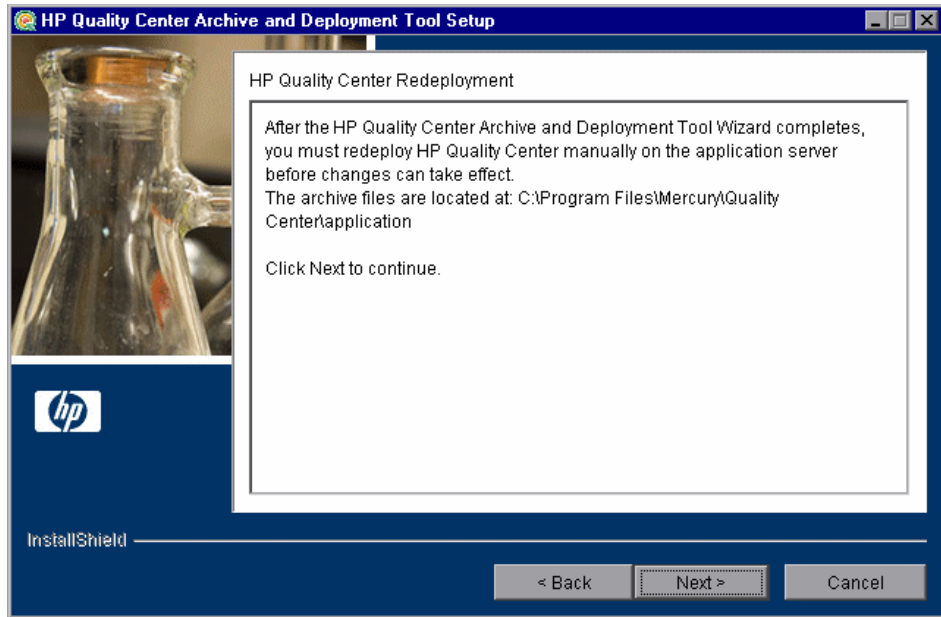


For the Enterprise Extension to work with Quality Center, you need to create a new archive and redeploy the **qcbn.war** and **sabin.war** files on the application server. This enables changes to the archive files to take effect.

Click **Next** to create the new archive files.

- 13** If your application server is JBoss, proceed to step 14.

If your application server is WebSphere or WebLogic, the following screen opens.



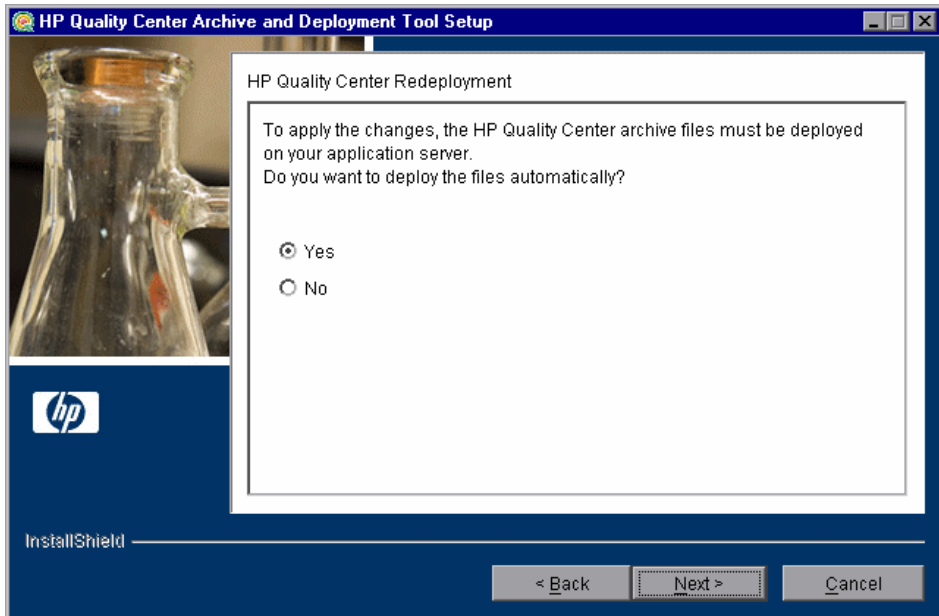
You must deploy Quality Center manually on the application server after the setup process completes. The location of the archive files is shown in the screen.

Note: For more information on manually deploying Quality Center on an application server, see the *HP Quality Center Installation Guide*.

Click **Next** and proceed to step 16.

14 If your application server is WebSphere or WebLogic, proceed to step 16.

If your application server is JBoss, the HP Quality Center Redeployment screen opens.

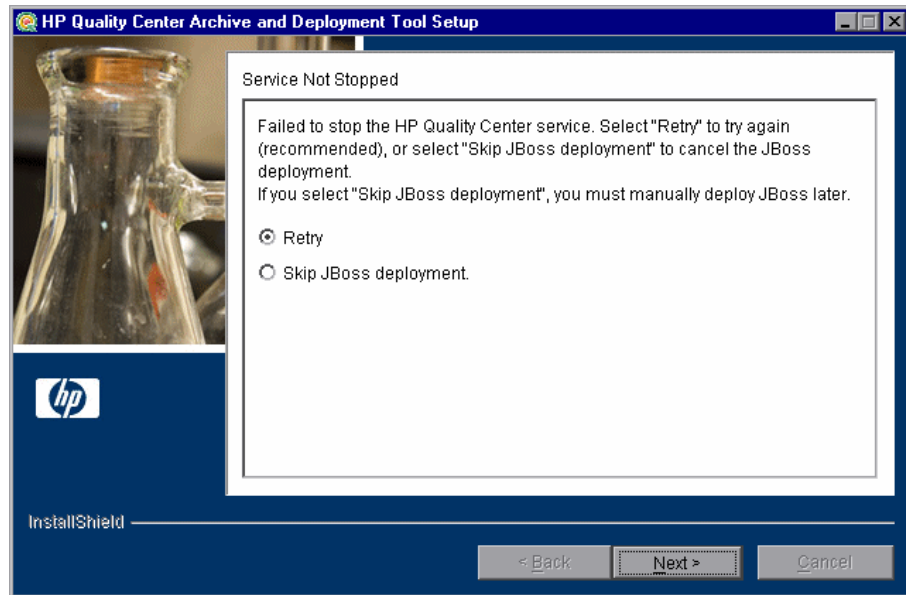


Select one of the following options:

- **Yes.** Deploys the archive files automatically.
- **No.** Indicates that you will deploy the archive files later.

Click **Next**.

- 15** If the Quality Center service is running, the Archive and Deployment Tool automatically attempts to stop the service. If the tool is unable to stop the service, the Service Not Stopped screen opens.



Select one of the following options:

- **Retry.** Instructs the setup program to try to stop the JBoss service again.
- **Skip JBoss deployment.** Instructs the setup program to cancel deployment. You should manually deploy JBoss later.

Click **Next**.

- 16** When the deployment is complete, the Completion screen opens. Click **Finish** to close the Quality Center Archive and Deployment Tool.

Note: If you manually deployed the archive files on your application server, you must restart Quality Center after deployment.

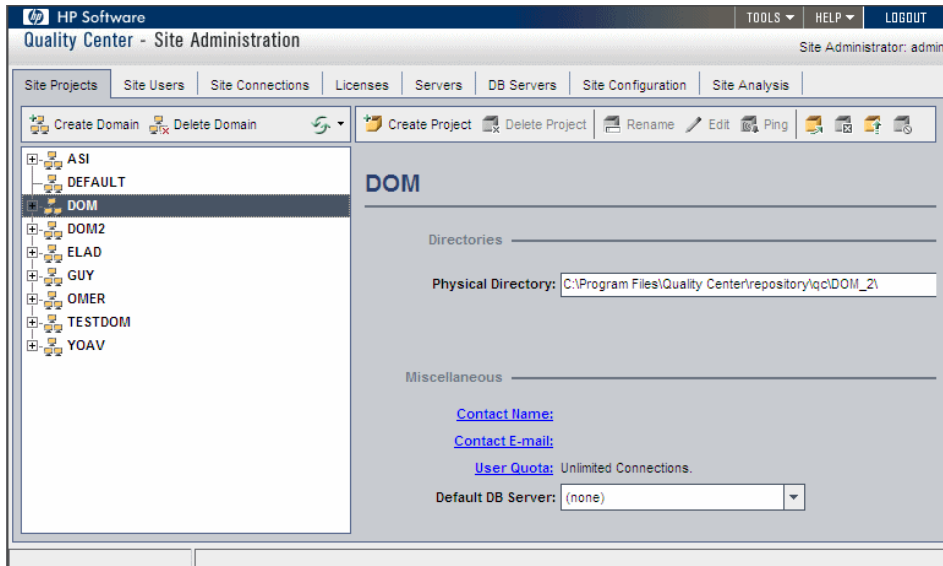
- 17** Click **Finish** to close the HP quality process for SAP applications Setup screen.

Upgrading a Project to Enterprise Extension 2.50

When you upgrade the Enterprise Extension on your server to version 2.50, you must upgrade any project on your server that was enabled for 2.00. If you attempt to connect to a version 2.00 project on a server that has been upgraded to Enterprise Extension version 2.50, you will receive a **Failed to Connect Project** error message.

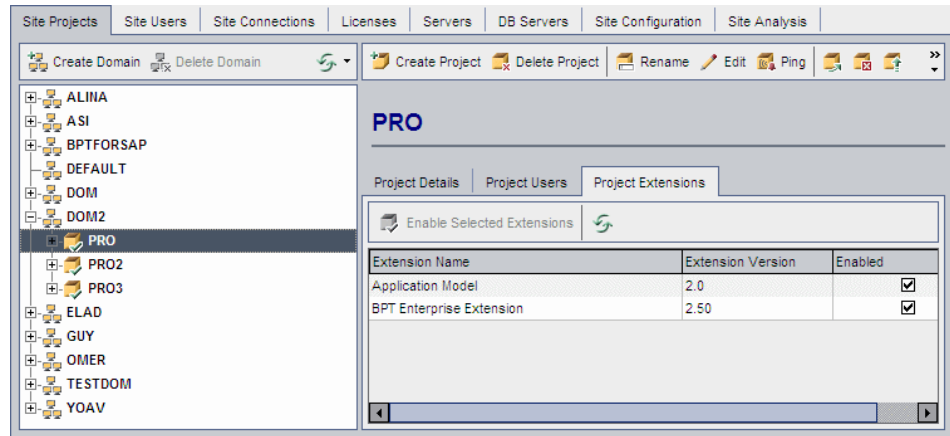
To upgrade a project from version 2.00 to version 2.50:

- 1 Open the Quality Center Site Administration ([http://<Quality Center server name>\[:<port number>\]/sabin](http://<Quality Center server name>[:<port number>]/sabin)), and log in.
- 2 In the project tree in the left pane, expand the domain containing the project that you want to upgrade, by clicking its plus sign.



- 3 Select the project that you want to upgrade.

To confirm the current project's extension version, click the **Project Extensions** tab. A check is displayed in the check boxes for the enabled extensions.



- 4 Click the **Upgrade Project** button in the Site Projects toolbar.
- 5 Upgrading a project to a new extension version requires following standard database upgrade procedures for Quality Center projects. For more information, see the *HP Quality Center Administrator's Guide*.

Uninstalling the Enterprise Extension

This section describes how to uninstall the Enterprise Extension from your Windows, Solaris, or Linux server computer. When you uninstall the Enterprise Extension, the Enterprise Extension files are deleted from your Quality Center server.

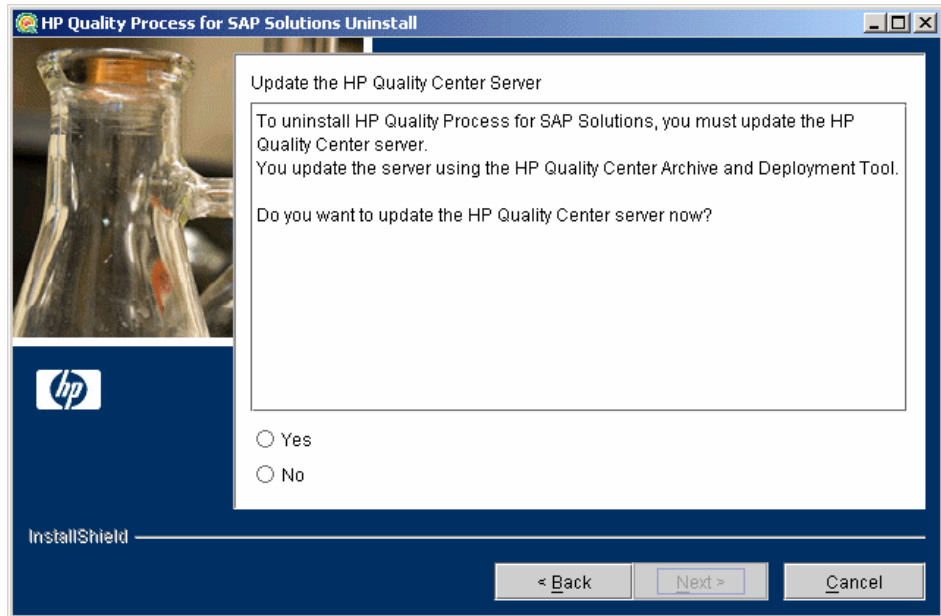
Note: If you installed more than one extension when installing the Enterprise Extension (see step 7 on page 18), all extensions are uninstalled.

To uninstall the Enterprise Extension:

- 1** Make sure that the application server is running.
- 2** Open the **HP Quality Process for SAP Solutions Uninstall** wizard for your platform:

Platform	To uninstall:
Windows	Select Start > Settings > Control Panel > Add/Remove Programs , select HP Quality Process for SAP Applications , and click the Change/Remove button.
Solaris or Linux (console mode)	<ul style="list-style-type: none"> ➤ Locate the Enterprise Extension uninstall directory. By default, the files are stored in [drive]:/opt/Mercury/QualityProcessforSAPApplications/uninst. ➤ Enter ./uninstall -console. <p>Note: Console mode uninstallation contains the same text and prompts as the UI mode uninstallation. The text and prompts are displayed in text mode.</p>
Solaris or Linux (UI mode)	<ul style="list-style-type: none"> ➤ Make sure that the DISPLAY environment variable is properly configured on the Quality Center server machine, and that the client machine from which you are uninstalling is running an X-server (for example, eXceed). <p>For example, to configure the DISPLAY environment variable for TCSHELL:</p> <ol style="list-style-type: none"> 1 Run an X-server (such as eXceed) on your client machine. 2 Login into the Linux/Solaris machine. 3 Run the tcsH command to enter the TCSHELL. 4 At the command line prompt enter setenv DISPLAY 1.1.1.1:0.0, where 1.1.1.1 is the IP address of the client machine running the X-server. 5 Locate the Enterprise Extension home directory. By default, the files are stored in [drive]:/opt/Mercury/QualityProcessforSAPApplications. <ul style="list-style-type: none"> ➤ Locate the _uninst subdirectory. ➤ Enter ./uninstall.

- 3 The HP Quality Process for SAP Solutions Uninstall screen opens.
- 4 Click **Next**. The Update the Server screen opens.



Select an update option:

- **Yes**. Updates the archive files and runs the deployment tool.
- **No**. Indicates that you will manually update the archive files later.

Click **Next** to continue to uninstall, or **Cancel** to close the Update the Server screen without uninstalling.

- 5 If you selected **Yes** in the previous step, the Quality Center Archive and Deployment Tool opens.

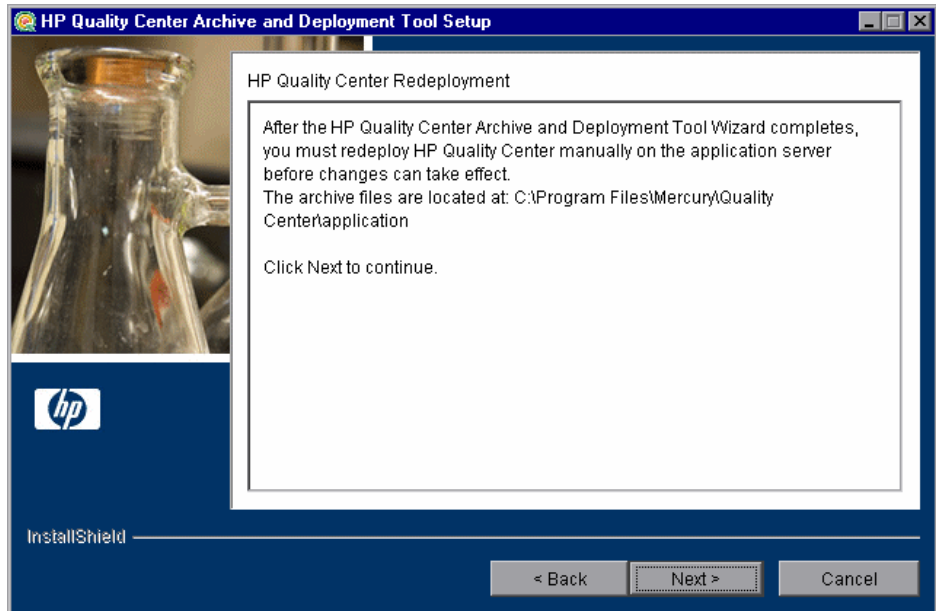


To uninstall the Enterprise Extension, you need to create a new archive and redeploy the Quality Center and Site Administration war files (**qcbn.war** and **sabin.war**) on the application server. This enables changes to the **.war** files to take effect.

Click **Next** to create the new archive files.

6 If your application server is JBoss, proceed to step 7.

If your application server is Websphere or WebLogic, the following screen opens.



You must deploy Quality Center manually on the application server after the setup process is complete. The location of the archive files is shown in the screen.

The updated archive files are stored in different formats, although the content is the same. The files are stored openly in the **10sabin.war** and **20qcbin.war** folders, and as closed archives in **sabin.war** and **qcbin.war**.

To update the archives and undeploy them manually, run the **undeploy.bat** script (or **undeploy.sh** for Solaris or Linux) from the **<Enterprise Extension installation>** directory. When running the batch file, specify the Quality Center installation directory and the location of the Quality Center repository, using the format:

```
undeploy <Quality Center installation directory> <Quality Center repository
directory>
```

For example:

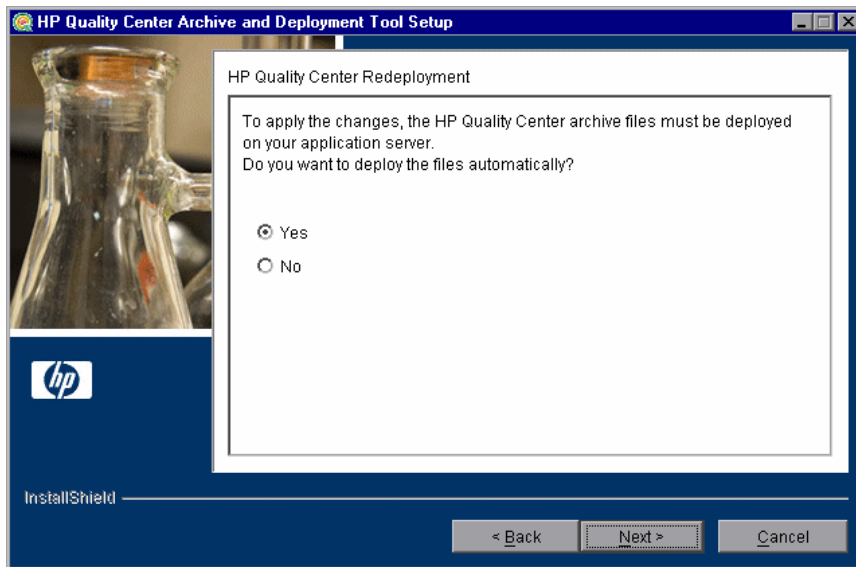
```
undeploy "C:\Program Files\Mercury\Quality Center" "C:\Program Files\Mercury\Quality Center\repository"
```

Note: For more information on manually deploying Quality Center on an application server, see the *HP Quality Center Installation Guide*.

Click **Next** and proceed to step 9.

- 7 If your application server WebSphere or WebLogic, proceed to step 9.

If your application server is JBoss, the HP Quality Center Redeployment screen opens.

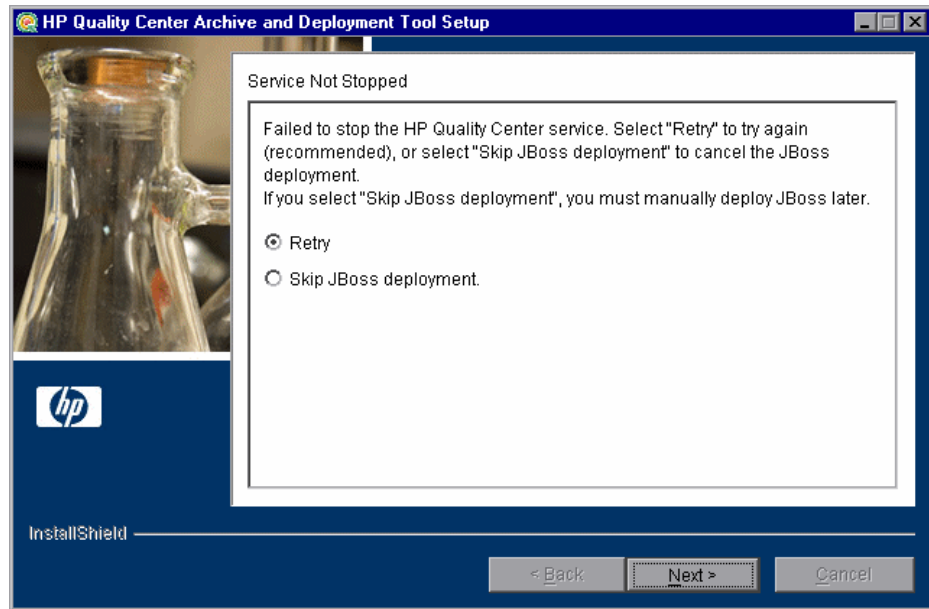


Select one of the following options:

- **Yes.** To deploy the archive files automatically.
- **No.** To manually deploy the archive files later.

Click **Next** to continue.

- 8 If the Quality Center service is running, the Archive and Deployment Tool automatically attempts to stop the service. If the tool is unable to stop the service, the Service Not Stopped screen opens.



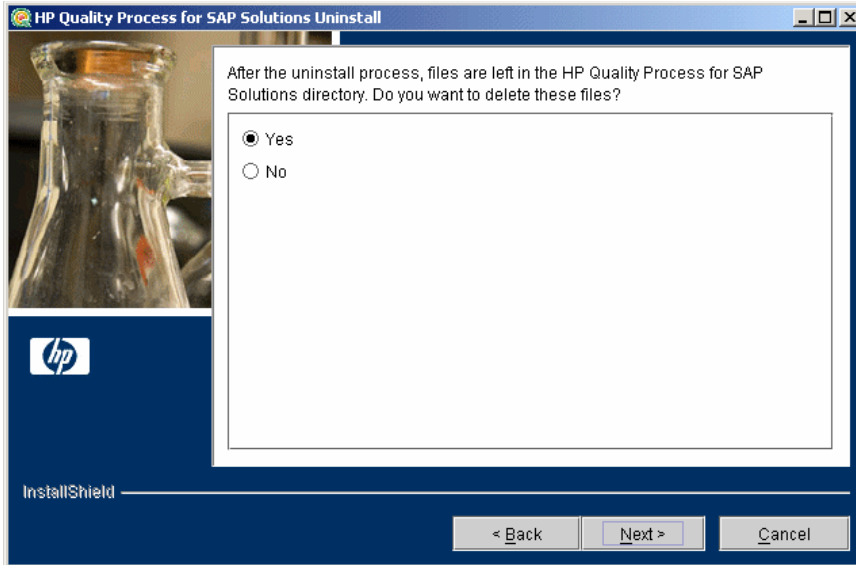
Select one of the following options:

- **Retry.** To try again to stop the JBoss service.
- **Skip JBoss deployment.** To cancel the deployment and manually deploy JBoss later.

Click **Next**.

- 9 When the deployment is complete, the Completion screen opens. Click **Finish** to close the Quality Center Archive and Deployment Tool Setup. The HP Quality Process for SAP Solutions Uninstall screen is displayed.
- 10 Click **Next**. The Update completed screen opens.

- 11 Click **Next** to continue. The File Deletion screen opens.



It is recommended that you click **Yes** to delete the remaining uninstall files in the Enterprise Extension directory.

Click **Next**.

- 12 Click **Finish** to close the HP Quality Process for SAP Solutions Uninstall screen. The uninstall process is complete for Windows. For Solaris and Linux proceed to the following steps.
- 13 For Solaris and Linux, ensure that the **[drive]:/opt/Mercury/QualityProcessforSAPApplications** folder has been deleted. If it still exists, enter:
 - a `cd /opt/mercury`
 - b `\rm -R QualityProcessforSAPApplications`
- 14 For Solaris and Linux, run the **Quality Center Archive and Deployment Tool** to create a new archive and redeploy the Quality Center and Site Administration **.war** files on the application server. When you are prompted to delete all add-in files, select **Yes**.

2

Setting Up the Enterprise Extension

This chapter describes how to enable your Quality Center projects for the Enterprise Extension, and how to set up your SAP application to enable learning flows automatically. The chapter also explains how to customize the Enterprise Extension.

Note: If you are installing the Enterprise Extension over a current installation, you are not required to re-perform the processes described in this chapter.

This chapter includes:

- ▶ About Setting Up the Enterprise Extension on page 36
- ▶ Loading the Enterprise Extension License on page 36
- ▶ Enabling the Enterprise Extension on page 37
- ▶ Installing the SAP Application Importer Component on page 39
- ▶ Configuring the SAP Environment on page 40
- ▶ Customizing the Enterprise Extension on page 40

About Setting Up the Enterprise Extension

After you install the Enterprise Extension on your Quality Center server computer, you must load the Enterprise Extension license to enable you to work with the Enterprise Extension in your Quality Center projects. In addition, you must enable the Enterprise Extension for each Quality Center project for which you want to use it. You must also install the SAP Application Importer Component on each Quality Center client computer. If you want to learn flows automatically by navigating your SAP application, you must configure your SAP environment.

You can also configure which Quality Center user groups can perform actions in the Application Model module, and configure Application Model module entities.

Loading the Enterprise Extension License

To enable the Enterprise Extension in Quality Center, you must load your Enterprise Extension license.

To load the Enterprise Extension license:

- 1 In Site Administration, click the **Licenses** tab.

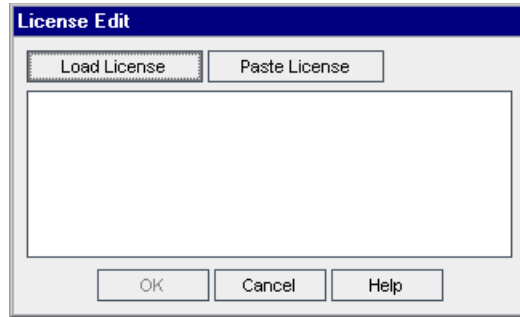
The screenshot displays the 'Licenses' tab in the Site Administration interface. At the top, there is a 'Modify' button. Below it, a table titled 'HP Quality Center License Status:' provides details on license usage. The table has four columns: License, In Use, and Max. The data rows are as follows:

License	In Use	Max
Defects	8	Unlimited
TestPlan-TestLab	8	Unlimited
Requirements	8	Unlimited
Components	8	Unlimited

Below the table, there are two rows of configuration details:

Expiration Date :	11/30/2007	Tolerance:	0 %
Version Control :	Y	Dashboard:	Y

- 2 Click the **Modify** button. The License Edit dialog box opens.



- 3 Click the **Load License** button and select the Enterprise Extension license file. Alternatively, copy the content of the license file and click **Paste License**.
- 4 Click **OK**. The license is displayed in the list of licenses.

Enabling the Enterprise Extension

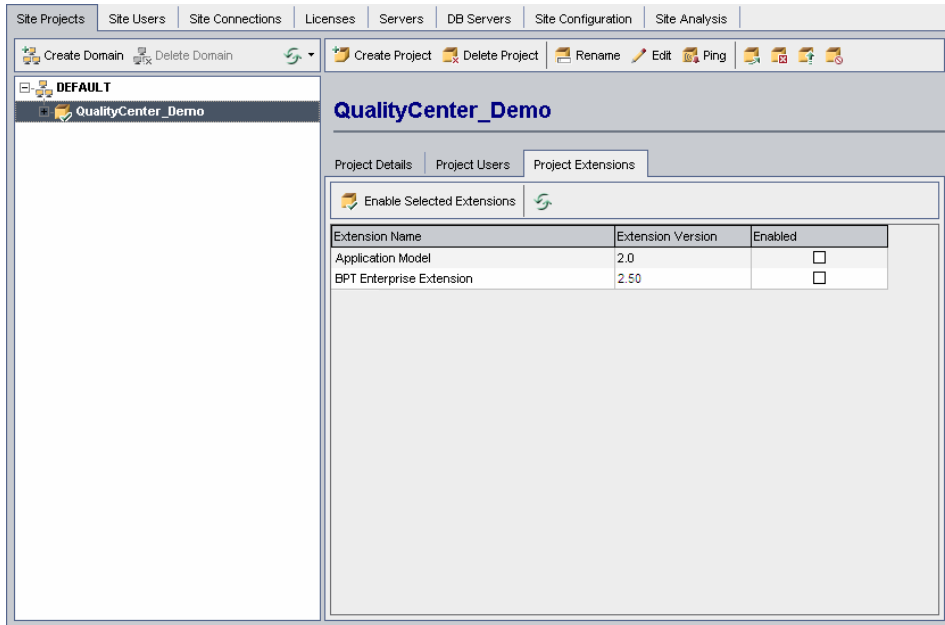
After installing the Enterprise Extension on your Quality Center server, you must enable the Enterprise Extension for a project before you can use it with the project.

Notes:

- You cannot disable an extension for a project after you enable it.
 - When you enable a project for the Enterprise Extension, the Application Model module is also enabled for the project.
-

To enable the Enterprise Extension extension for a project:

- 1** In Quality Center Site Administration, click the **Site Projects** tab.
- 2** In the Projects list, select a project. In the right pane, click the **Project Extensions** tab. The Extensions list is displayed, listing extensions installed on the Quality Center server.



- 3** Shift-click and highlight both the **Application Model** and **BPT Enterprise Extension** rows. Click the **Enable Selected Extensions** button and click **Yes** to confirm. The **BPT Enterprise Extension** and **Application Model** extensions are both enabled and a confirmation message displays. Note that enabling the extensions may take some time.

Note: Once Enterprise Extension is enabled for a project it cannot be disabled.

Installing the SAP Application Importer Component

If you want to import SAP application entity hierarchies to the Application Model module on your Quality Center client computer, you must install the SAP Application Importer Component on that client computer. The SAP Application Importer Component is the tool that communicates with the SAP server and imports application entity data from your SAP application to Quality Center.

Notes:

- ▶ To install the SAP Application Importer Component, you must have Microsoft .NET Framework 2.0 installed on the client computer. You can download it from the Microsoft Web site (<http://www.microsoft.com>).
- ▶ To install the SAP Application Importer Component, you must have operating system administrator permissions.

To install the SAP Application Importer Component:

- 1** From your Quality Center client computer, log in to a project for which the Enterprise Extension is enabled. The SAP Application Importer Component files are downloaded to your client computer.
- 2** Locate the **APM** directory in the Quality Center installation directory (by default **C:\Program Files\Common Files\Mercury Interactive\Quality Center**).
- 3** Run the **SAPAppImporterSetup.exe** file located in this folder and follow the installation instructions on your screen.

Configuring the SAP Environment

To use the Enterprise Extension to learn flows automatically by navigating your SAP application, you must configure your SAP application. The necessary configuration settings are the same as those required for working with the HP QuickTest Professional Add-in for SAP Solutions. For more details on these configurations settings, see the chapter on SAP GUI for Windows environment in the *HP QuickTest Professional Add-ins Guide*.

Customizing the Enterprise Extension

You can define which users have the permissions needed for different tasks in Business Process Testing for SAP Applications. You can customize the Enterprise Extension by defining which user groups can add, delete, and modify application entity folders and application entities. You can also determine which application entities and application entity fields each user group can view. In addition, you can add and customize Application Model module fields and customize access to the Application Model module.

This section includes the following topics:

- ▶ Defining Permissions for Business Process Testing for SAP Applications
- ▶ Customizing User Group Permissions for the Application Model Module
- ▶ Hiding Data in the Application Model Module for a User Group
- ▶ Customizing Project Entities
- ▶ Customizing Module Access

Defining Permissions for Business Process Testing for SAP Applications

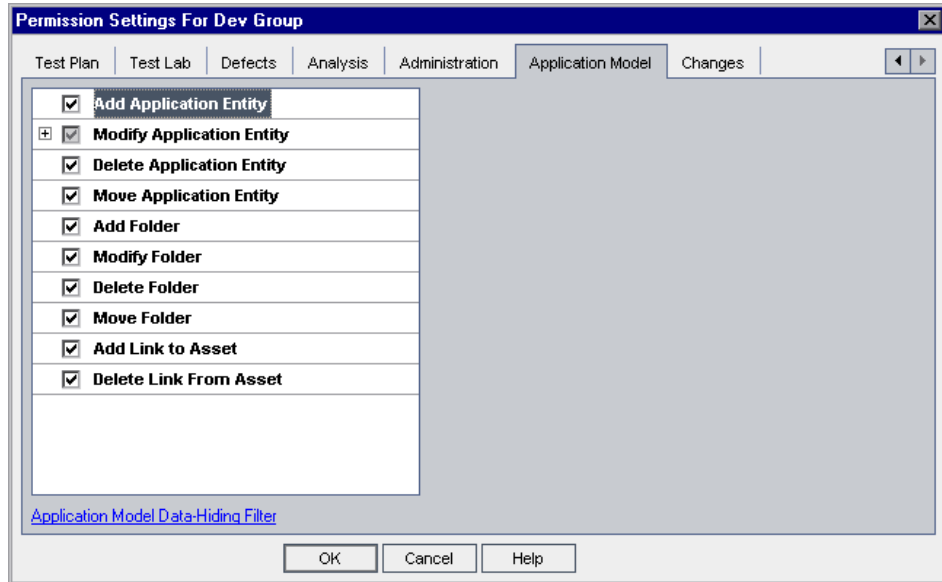
The following are the permissions needed for different tasks in Business Process Testing for SAP Applications:

To do the following:	You need to belong to the group with permissions for:
Work with flows	Working with tests
Learn flows	The Modify Folder (Test Plan), Modify Test , Add Component Folder , Add Component , Add Step , Add Parameter , Modify Component , Modify Step , and Modify Parameter tasks.
Detect changes	The Run task
Resolve changes	The Modify Test and the Modify Component tasks

Customizing User Group Permissions for the Application Model Module

You can customize the permission settings for the Application Model module in the Permission Settings dialog box in Project Customization. For more information on user group permissions, see the *HP Quality Center Administrator's Guide*.

The Application Model tab displays the tasks available in the Application Model module.

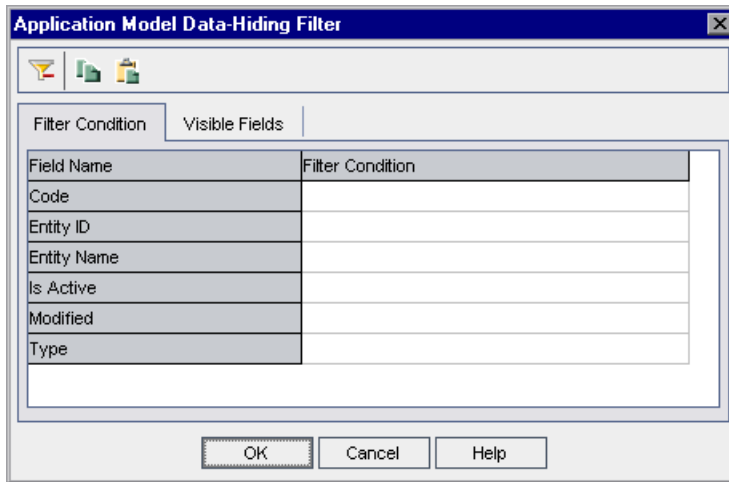


The Application Model tab includes the following tasks:

Task	Description
Add Application Entity	User group can add application entities to the Application Model module.
Modify Application Entity	User group can modify application entities in the Application Model module. This task also enables you to specify the fields that the selected user group can modify.
Delete Application Entity	User group can delete application entities from the Application Model module.
Move Application Entity	User group can move application entities in the Application Model module.
Add Folder	User group can add folders to the Application Model Tree.
Modify Folder	User group can modify folders in the Application Model Tree.
Delete Folder	User group can delete folders from the Application Model Tree.
Move Folder	User group can move folders in the Application Model Tree.
Add Link to Asset	User group can associate application entities with tests and business components.
Delete Link from Asset	User group can remove associations of application entities with tests and business components.

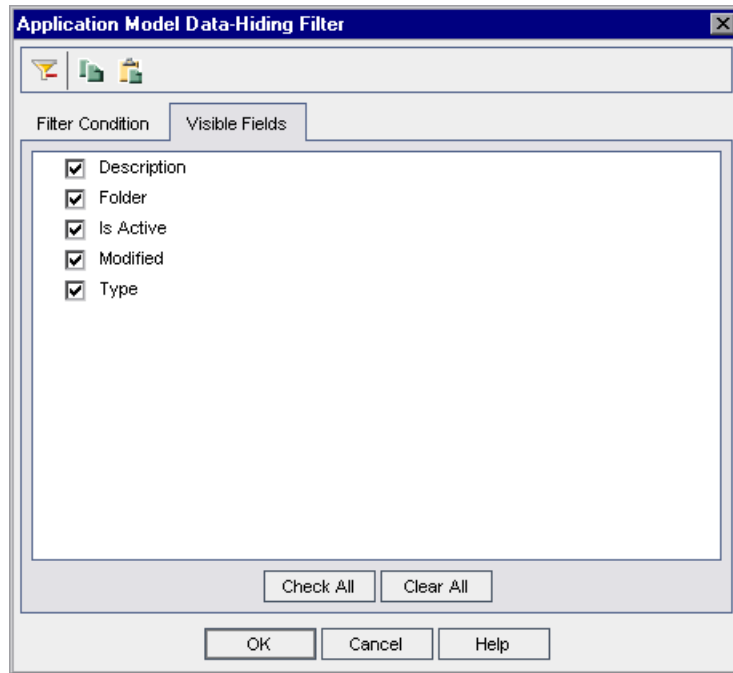
Hiding Data in the Application Model Module for a User Group

You can set filters for specific fields in the Application Model module, limiting the application entities that a user group can view. For example, you can set the filter for the field **Type** to **SAP Batch Job**. This instructs Quality Center to allow users belonging to the user group to view only application entities that are SAP batch jobs. You set filters in the Filter Condition tab in the Application Model Data-Hiding Filter dialog box. For more information on hiding data for a user group, see the *HP Quality Center Administrator's Guide*.



You can filter by the following fields: **Code**, **Entity ID**, **Entity Name**, **Is Active**, **Modified**, and **Type**. For more details on these fields, see the *HP Business Process Testing Enterprise Extension User's Guide*.

You can also select which fields in the Application Model module the user group can see and which should be hidden. You select these fields in the Application Model Data-Hiding Filter dialog box, in the Visible Fields tab.



You can choose to hide the following fields: **Description**, **Folder**, **Is Active**, **Modified**, and **Type**. For more details on these fields, see the *HP Business Process Testing Enterprise Extension User's Guide*.

Customizing Project Entities

You can customize the system fields and add new user-defined fields for the Application Model module from the Project Entities page in Quality Center Project Customization. You customize these fields under the **Application Entity** and the **Change Entity** entities. For more information on customizing project entities, see the *HP Quality Center Administrator's Guide*.

Customizing Module Access

You can customize which user groups can access the Application Model module. You customize access to these modules from the Module Access page in Quality Center Project Customization. For more information on customizing access to Quality Center modules, see the *HP Quality Center Administrator's Guide*.