

# HP Select Identity Software

## Connector for IBM DB2 Universal Database

Connector Version: 3.71

---

### Installation and Configuration Guide

Document Release Date: September 2007  
Software Release Date: September 2007



## Legal Notices

### Warranty

The only warranties for HP products and services are set forth in the express warranty statements accompanying such products and services. Nothing herein should be construed as constituting an additional warranty. HP shall not be liable for technical or editorial errors or omissions contained herein.

The information contained herein is subject to change without notice.

### Restricted Rights Legend

Confidential computer software. Valid license from HP required for possession, use or copying. Consistent with FAR 12.211 and 12.212, Commercial Computer Software, Computer Software Documentation, and Technical Data for Commercial Items are licensed to the U.S. Government under vendor's standard commercial license.

### Copyright Notices

© Copyright 2006-2007 Hewlett-Packard Development Company, L.P.

This product includes software developed by the Apache Software Foundation (<http://www.apache.org/>). Portions Copyright © 1999-2003 The Apache Software Foundation. All rights reserved.

Select Identity uses software from the Apache Jakarta Project including:

- Commons-beanutils
- Commons-collections
- Commons-logging
- Commons-digester
- Commons-httpclient
- Element Construction Set (ecs)
- Jakarta-poi
- Jakarta-regexp
- Logging Services (log4j)

Additional third party software used by Select Identity includes:

- JasperReports developed by SourceForge
- iText (for JasperReports) developed by SourceForge
- BeanShell
- Xalan from the Apache XML Project
- Xerces from the Apache XML Project
- Java API for XML Processing from the Apache XML Project
- SOAP developed by the Apache Software Foundation
- JavaMail from SUN Reference Implementation
- Java Secure Socket Extension (JSSE) from SUN Reference Implementation
- Java Cryptography Extension (JCE) from SUN Reference Implementation
- JavaBeans Activation Framework (JAF) from SUN Reference Implementation

- OpenSPML Toolkit from OpenSPML.org
- JGraph developed by JGraph
- Hibernate from Hibernate.org
- BouncyCastle engine for keystore management, bouncycastle.org

This product includes software developed by Teodor Danciu (<http://jasperreports.sourceforge.net>). Portions Copyright © 2001-2004 Teodor Danciu (teodord@users.sourceforge.net). All rights reserved.

Portions Copyright © 1994-2004 Sun Microsystems, Inc. All Rights Reserved.

This product includes software developed by the Waveset Technologies, Inc. ([www.waveset.com](http://www.waveset.com)). Portions Copyright © 2003 Waveset Technologies, Inc. 6034 West Courtyard Drive, Suite 210, Austin, Texas 78730. All rights reserved.

Portions Copyright © 2001-2004, Gaudenz Alder. All rights reserved.

#### Trademark Notices

AMD and the AMD logo are trademarks of Advanced Micro Devices, Inc.

Intel and Pentium are trademarks or registered trademarks of Intel Corporation in the United States, other countries, or both.

JAVA™ is a US trademark of Sun Microsystems, Inc.

Microsoft® and Windows® are U.S. registered trademarks of Microsoft Corporation.

Oracle® is a registered US trademark of Oracle Corporation, Redwood City, California

UNIX® is a registered trademark of The Open Group.

## Support

You can visit the HP software support web site at:

**<http://www.hp.com/go/hpsoftwaresupport>**

HP Software online support provides an efficient way to access interactive technical support tools. As a valued support customer, you can benefit by using the support site to:

- Search for knowledge documents of interest
- Submit and track support cases and enhancement requests
- Download software patches
- Manage support contracts
- Look up HP support contacts
- Review information about available services
- Enter into discussions with other software customers
- Research and register for software training

Most of the support areas require that you register as an HP Passport user and sign in. Many also require an active support contract.

To find more information about support access levels, go to:

**[http://h20230.www2.hp.com/new\\_access\\_levels.jsp](http://h20230.www2.hp.com/new_access_levels.jsp)**

# Contents

<b>1</b>	<b>Documentation Map</b>	<b>7</b>
<b>2</b>	<b>Introduction</b>	<b>9</b>
	About HP Select Identity	9
	About Connectors	9
	About DB2 Connector	9
	High-Level Architecture	10
	Overview of Installation Tasks	11
<b>3</b>	<b>Installing the Connector</b>	<b>13</b>
	DB2 Connector Files	13
	Planning the Installation	14
	Plan 1: Connector with the Agent	14
	Plan 2: Connector Without the Agent and with JDBC Data Source	14
	Plan 3: Connector Without the Agent and with JDBC Driver	15
	System Requirements	16
	Pre-Installation Task	16
	Enable JDBC Driver Based Communication	16
	Enable JDBC Data Source Based Communication	17
	Installing the Connector RAR	17
	Configuring DB2 to Support Secure JDBC	17
<b>4</b>	<b>Configuring the Connector with Select Identity</b>	<b>19</b>
	Configuration Procedure	19
	Add a New Connector	19
	Add a New Resource	19
	Generate Mapping Files	20
	Configure a Resource	20
	Map Attributes	23
<b>5</b>	<b>Installing the Agent</b>	<b>25</b>
	About the Agent	25
	Installing the Agent on the IBM DB2 Universal Database	25
	Prerequisites	25
	Install the Agent	26
	Windows	26
	Solaris	34
	Installed Files	41
	Starting the Agent	42
	Operating the Agent Daemon	42

Modifying the Database Account and Select Identity Passwords . . . . .	42
<b>6 Uninstalling the Connector</b> . . . . .	45
Uninstalling the Agent on Windows . . . . .	45
Uninstalling the Agent on Solaris . . . . .	45
<b>A Troubleshooting</b> . . . . .	47
Connector Installation . . . . .	47
Agent and Trigger Installation . . . . .	48
Agent Execution . . . . .	50

# 1 Documentation Map

This chapter describes the organization of HP Select Identity connector documentation and provides necessary information on how to use the documentation set to install and configure the connectors.

[Figure 1](#) illustrates the documentation map for HP Select Identity connector. For a list of available product documentation, refer to the [Table 1](#).

**Figure 1 Documentation Map**



**Table 1 Connector Documentation**

<b>Document Title and Filename</b>	<b>Contents</b>	<b>Location</b>
<i>Release Note</i> DB2 Connector v3.71 Release Note.htm	This file contains necessary information on new features of the connector, enhancements, known problems or limitations, and support information.	/Docs subdirectory under the connector directory.
<i>Connector Deployment Guide (for Select Identity 4.20)</i> connector_deploy_SI4.20.pdf	Connector deployment guides provide detailed information on: <ul style="list-style-type: none"> <li>• Deploying a connector on an application server.</li> <li>• Configuring a connector with Select Identity.</li> </ul> Refer to these guides when you need generic information on connector installation.	/Docs/ root directory on the product's CD media.
<i>Connector Deployment Guide (for Select Identity 4.10-4.13)</i> connector_deploy_SI4.13.pdf		
<i>Connector Deployment Guide (for Select Identity 4.0-4.01)</i> connector_deploy_SI4.pdf		
<i>Connector Deployment Guide (for Select Identity 3.3.1)</i> connector_deploy_SI3.3.1.pdf		
<i>Connector Installation and Configuration Guide</i> DB2_guide.pdf	Connector installation and configuration guide provides installation instructions for a specific connector. It contains resource specific configuration details.	/Docs subdirectory under the connector directory.



## 2 Introduction

This chapter gives an overview of the HP Select Identity connector for IBM DB2 Universal Database. An HP Select Identity connector for IBM DB2 Universal Database enables you to provision users and manage identities on IBM DB2 Universal Database. At the end of this chapter, you will be able to know about:

- The benefits of HP Select Identity.
- The role of a connector.
- The connector for IBM DB2 Universal Database.

### About HP Select Identity

HP Select Identity provides a new approach to identity management. Select Identity helps you automate the process of provisioning and managing user accounts and access privileges across platforms, applications, and corporate boundaries. Select Identity communicates with the enterprise information system through connectors, and automates the tasks of identity management. The enterprise information system, which is also referred to as **resource**, can be a database, a directory service, or an ERP package, among many others.

### About Connectors

You can establish a connection between a resource and Select Identity by using a connector. A connector is resource specific. The combination of Select Identity and connector helps you perform a set of tasks on the resource to manage identity. A connector can be **unidirectional** or **bidirectional**. A unidirectional connector helps you manage identities from Select Identity, but if any change takes place in resource, it cannot communicate that back to Select Identity. On the other hand, a bidirectional connector can reflect the changes made on resource back to Select Identity. This property of bidirectional connectors is known as **reverse synchronization**.

### About DB2 Connector

The connector for IBM DB2 Universal Database — hereafter referred to as the DB2 connector — enables Select Identity to provision user information in database schema hosted on DB2 database systems. The DB2 connector can perform the following operations in the database schema on the IBM DB2 Universal Database:

- Add, update, and remove users

- Retrieve user attributes
- Enable and disable users
- Verify a user's existence
- Change user passwords
- Reset user passwords
- Retrieve all entitlements
- Retrieve a list of supported user attributes
- Grant and revoke entitlements to and from users
- Add, update, and remove entitlements

➤ This connector does not provision database system users. Rather, it provisions users into a user-defined database schema in IBM DB2 Universal Database. To provision database system users, install the Admin DB2 connector.

The connector also provides an agent that can send changes made to the data in IBM DB2 Universal Database server to Select Identity. The following reverse synchronization operations are supported:

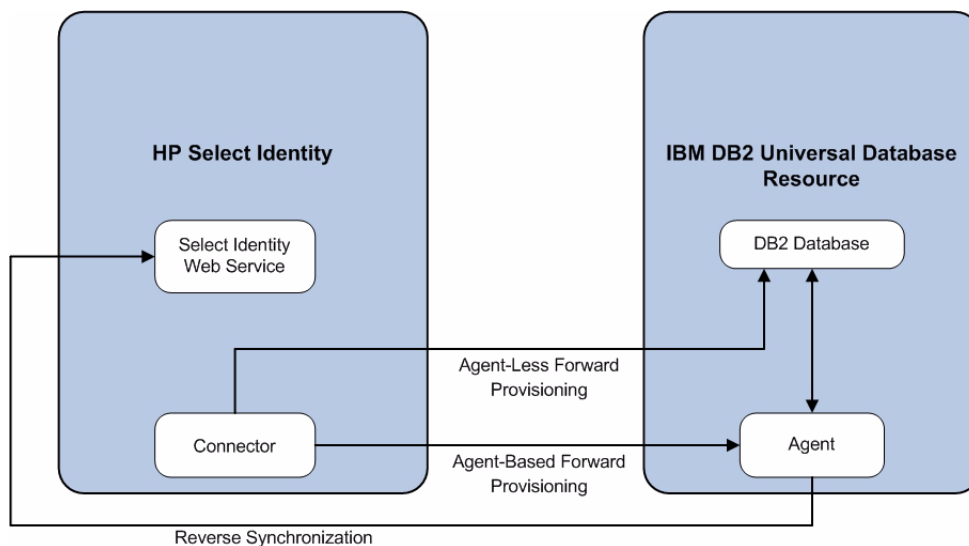
- Change passwords stored in Select Identity based on changes to the passwords in the schema in IBM DB2 Universal Database.
- Add, modify, and delete users based on user additions, modifications, and deletions in the schema in IBM DB2 Universal Database.

➤ This connector can be used with Select Identity 3.3.1-4.20.

## High-Level Architecture

Figure 2 illustrates a high-level architecture of DB2 connector. The connector supports both agent-based and agent-less mode of operation. To support reverse synchronization, you must install the connector on Select Identity server and the agent on resource system. The agent helps synchronizing the changes made on DB2 with Select Identity.

**Figure 2 High-Level Architecture of the Connector**



To perform forward provisioning operation on IBM DB2 Universal Database, the connector communicates either directly with the database or with the agent. The agent detects the changes on the host (DB2 database) resource and sends SPML notifications to Select Identity to synchronize the changes. Thus, the DB2 connector enables data to flow in both the directions, as illustrated in [Figure 2](#).

## Overview of Installation Tasks

Before you start installing the connector, you must ensure that system requirements and all the installation prerequisites are met. Refer to the [Table 2](#) for an overview of installation tasks.

**Table 2 Organization of Tasks**

Task Number	Task Name	Reference
1	Install the connector on the Select Identity server.	See <a href="#">Installing the Connector</a> on page 13.
	— Plan your installation setup.	See <a href="#">Planning the Installation</a> on page 14.
	— Meet the system requirements.	See <a href="#">System Requirements</a> on page 16.
	— Pre-installation task: Enable JDBC driver or JDBC data source based on your requirement.	See <a href="#">Pre-Installation Task</a> on page 16.
	— Deploy the Resource Adapter Archive (RAR ) file of the connector on an application server.	See <a href="#">Installing the Connector RAR</a> on page 17.
2	Configure the connector with Select Identity.	See <a href="#">Configuring the Connector with Select Identity</a> on page 19.
3	Install the agent on the DB2 machine.	See <a href="#">Installing the Agent</a> on page 25.
	— Verify and meet the prerequisites.	See <a href="#">Prerequisites</a> on page 25.
	— Install the agent by using the installation wizard.	See <a href="#">Install the Agent</a> on page 26.



# 3 Installing the Connector

This chapter elaborates the procedure to install the DB2 connector on the Select Identity server. At the end of this chapter, you will know about

- Software requirements to install the DB2 connector.
- Pre-installation tasks.
- Procedure to install the DB2 connector.

## DB2 Connector Files

The DB2 connector is packaged in the following files and folders, which are located in the IBM DB2 - Generic directory on Select Identity Connector CD:

**Table 3 DB2 Connector Files**

Serial Number	File Name	Description
1	<ul style="list-style-type: none"><li>• Gen-DB2-Connector_420.rar for WebSphere</li><li>• Gen-DB2-Connector_420WL9.rar for WebLogic</li></ul>	The binaries for the connector.
2	DB2-Gen-AgentInstaller-Win.zip	A ZIP file that contains the Windows installation executable for the connector agent. It is located in the Agent Installers directory of the CD.
3	DB2-Gen-AgentInstaller-Solaris.tar	A TAR file that contains the Solaris installation executable for the connector agent. It is located in the Agent Installers directory of the CD.

The DB2 connector is not shipped with any Schema file. The mapping file for the connector must be created by using the attribute mapping utility on Select Identity. Refer to the *Appendix F: Attribute Mapper* in *HP Select Identity Concepts and Administration Guide* for more information on attribute mapper utility.

# Planning the Installation

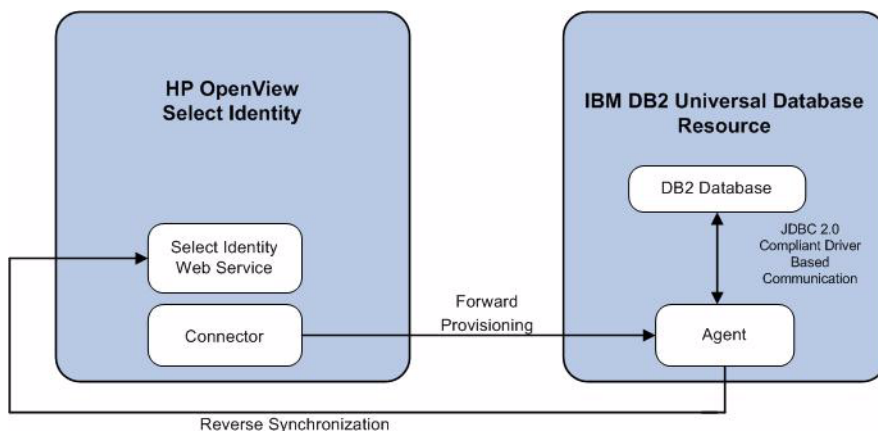
You can install the DB2 connector in three possible ways.

- Connector with the agent.
- Connector without the agent and with a JDBC data source.
- Connector without the agent and with a JDBC driver.

## Plan 1: Connector with the Agent

In this configuration, the connector communicates with an agent that resides on the database server; the agent uses a JDBC 2.0 compliant driver to communicate with the database. The agent can also push changes made in DB2 to the Select Identity database (reverse synchronization).

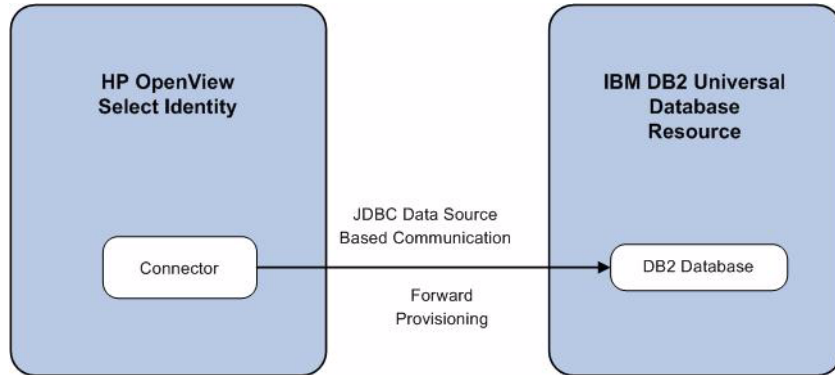
**Figure 3 Connector Installed with Agent**



## Plan 2: Connector Without the Agent and with JDBC Data Source

In this configuration, the connector communicates with the database directly through JDBC calls. You must create or identify a JDBC data source (and underlying connection pool) on the application server hosting Select Identity and the connector that can connect to the target DB2 database. Reverse synchronization is not achieved in this configuration.

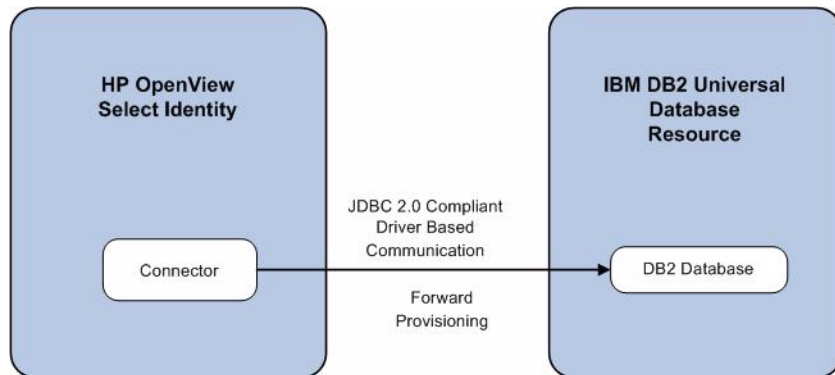
**Figure 4 Connector Without Agent: JDBC Data Source Based Communication**



### Plan 3: Connector Without the Agent and with JDBC Driver

In this configuration, the connector communicates with the database by using a JDBC 2.0 compliant driver; no agent is installed on the database server. Reverse synchronization is not achieved in this configuration.

**Figure 5 Connector Without Agent: JDBC 2.0 Compliant Driver Based Communication**



# System Requirements

The DB2 connector is supported in the following environment:

**Table 4 Platform Matrix for DB2 Connector**

Select Identity Version	Application Server	Database
3.3.1	WebLogic 8.1.4 on Windows 2003	Microsoft SQL Server 2000
	WebLogic 8.1.4 on Solaris 9	Oracle 9i
	WebLogic 8.1.4 on HP-UX 11i	Oracle 9i
4.0-4.20	DB2 connector is supported on all the platform configurations of Select Identity 4.0-4.20.	

The DB2 connector is supported on the following DB2 platforms and operating systems:

- For Select Identity 3.3.1, the connector is supported with IBM DB2 Universal Database, version 8.2, running on Windows 2003.
- For Select Identity 4.0-4.20, the connector is supported with IBM DB2 Universal Database, version 8.2, running on Windows and Solaris.

Also, this connector supports secure JDBC for database communication. See [Configuring DB2 to Support Secure JDBC](#) on page 17 for configuration information.

## Pre-Installation Task

Before you start installing, you must enable the communication mode between the connector and IBM DB2 Universal Database according to you installation plan.

### Enable JDBC Driver Based Communication

To enable a JDBC 2.0 compliant driver based communication, you must copy the files `db2jcc.jar`, `db2jcc_license_cisuz.jar`, and `db2jcc_license_cu.jar` on the Select Identity server. Perform the following steps to enable JDBC driver based communication:

- 1 Obtain the files `db2jcc.jar`, `db2jcc_license_cisuz.jar`, and `db2jcc_license_cu.jar`.
- 2 For Select Identity on WebLogic:
  - a Copy the files to a location on the Select Identity server.
  - b Add the file to the application server's CLASSPATH. To add the files to the application server's CLASSPATH:
    - Edit the startup script `myStartWL.cmd` for WebLogic on Windows.
    - Edit the startup script `myStartWL.sh` for WebLogic on UNIX.



- 3 For Select Identity on WebSphere, copy the `db2jcc.jar`, `db2jcc_license_cisuz.jar`, and `db2jcc_license_cu.jar` files to `%WAS_HOME%/lib/ext/` where `%WAS_HOME%` is a location like `D:\WebSphere\AppServer`.

## Enable JDBC Data Source Based Communication

To enable a JDBC data source based communication between the connector and the DB2 database, you must create a new or use an existing JDBC data source and an underlying connection pool on the application server that hosts Select Identity.

While creating a new JDBC data source on WebLogic, you must do the following:

- Cancel the selection Honor Global Transactions.
- Select the option Emulate Two-Phase Commit for non-XA Driver.

While creating a new JDBC data source on WebSphere, you must do the following:

- Create the data source as J2C Authentication Data Entry for the target DB2 database user ID.
- Deploy the JDBC Provider. You must use only XA type driver to connect to the database (a non-XA driver conflicts with the existing JDBC data source of Select Identity).
- Create a data source for the JDBC Provider and provide a suitable JNDI name, which will be used during resource creation on Select Identity.



The target database must support (or must be configured to support) the connectivity through XA type driver. For example, you must install JTA related stored procedures on a target Microsoft SQL Server 2000 to create a JDBC provider by using an XA driver from WebSphere.

If the target database does not support this, JDBC driver based installation is recommended.

## Installing the Connector RAR

To install the RAR file of the connector (such as `Gen-DB2-Connector_420.rar`) on the Select Identity server, you must copy the file to a local subdirectory on the Select Identity server, and then deploy on the application server. Refer to the *HP Select Identity Connector Deployment Guide* for detailed information on deploying a RAR file on an application server.



While deploying the RAR on WebSphere, enter the JNDI Pool Name as `eis/Gen-DB2Connector`.

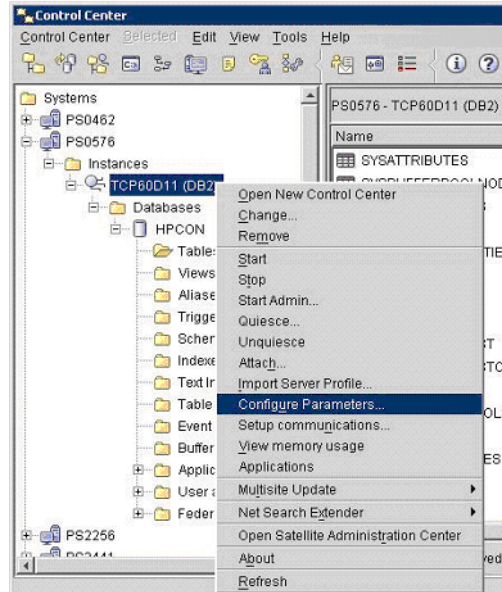
## Configuring DB2 to Support Secure JDBC

Complete the following steps to configure the DB2 server to support secure JDBC:

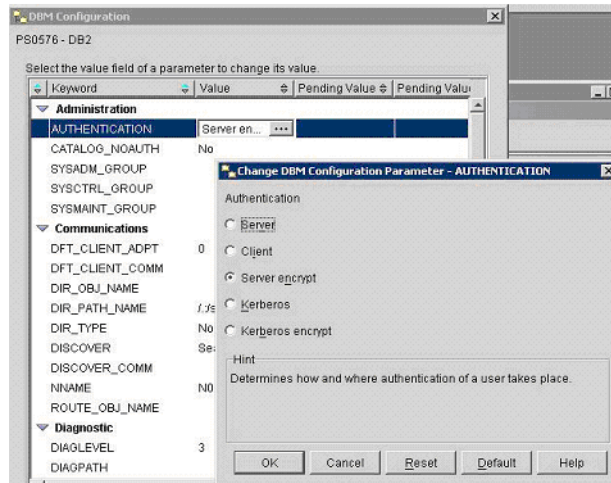
- 1 Update the `java.security` file, which resides in `JAVA_DIR\jre\lib\security`, by adding the following line:

```
security.provider.2=com.ibm.crypto.provider.IBMJCE
```

- 2 Ensure that the `ibmjceprovider.jar` and `ibmpkcs.jar` files are added to the `JAVA_DIR\jre\lib\etc` directory.
- 3 Launch the Control Center on the DB2 server.
- 4 Right-click on **DB2\_server** → **Instances** → **instance** and select **Configure Parameters...** from the menu.



- 5 In the configuration window, change the authentication to Server encrypt.



- 6 Restart the DB2 server.

You must enable SSL on the application server. For example, on WebLogic, select the currently running server and select the SSL Listener check box on the Security tab. You must restart the application server after enabling SSL.

# 4 Configuring the Connector with Select Identity

This chapter describes the procedure to configure the DB2 connector with Select Identity and the connector specific parameters that you must provide while configuring the connector with Select Identity.

## Configuration Procedure

After you deploy the connector RAR on application server, you must configure the connector with Select Identity. Perform the following steps to configure the DB2 connector with Select Identity.

- 1 Add a New Connector
- 2 Add a New Resource
- 3 Map Attributes

### Add a New Connector

Add a new connector in Select Identity by using the user interface. While adding the connector, do the following:

- In the Connector Name text box, specify a name for the connector.
- In the Pool Name text box, enter **eis/Gen-DB2Connector**.
- Select **Yes** for the Mapper Available section.

Refer to the *HP Select Identity Connector Deployment Guide* for detailed information on adding a new connector in Select Identity.

### Add a New Resource

Add a new resource in Select Identity that uses the newly added connector. Refer to the *HP Select Identity Connector Deployment Guide* for detailed instructions on adding a resource in Select Identity.

Before adding the resource, you must generate a mapping files for the DB2 connector from an available table in your database by using the attribute mapping utility of Select Identity.

## Generate Mapping Files

To generate mapping files for the connector, perform the following steps:

- 1 Create mapping files (XML and XSL files) for the DB2 connector by using the attribute mapping utility. In the Base Directory field, specify a location (*<base\_directory>*) where the mapping files will be placed. Refer to *Appendix F : Attribute Mapping Utility* of the *HP Select Identity Concepts and Administration Guide* for information on attribute mapping.
- 2 Place the XML and XSL files generated from attribute mapping utility in the following locations:

*On WebLogic:*

- a Identify a folder that is available in WebLogic CLASSPATH. Place the XSL file under this folder.
- b Place the XML file in the path  
`com\trulogica\truaccess\connector\schema\spml` under the above mentioned folder.

*On WebSphere:*

- a `<WebSphere_Install_Dir>/AppServer/lib/ext` is the default folder in WebSphere CLASSPATH. Place the XSL file directly under this folder.
- b Place the XML file in a path  
`com\trulogica\truaccess\connector\schema\spml` under the `<WebSphere_Install_Dir>/AppServer/lib/ext` folder.

## Configure a Resource

Add a resource for DB2 connector from Select Identity's user interface. Refer to the following table while entering the resource access parameters in Resource Basic Information and Resource Access Information pages.



- If you want to install and use the agent, enter appropriate values in the Database Driver String and the Agent Port fields. Leave the JDBC Datasource String field empty.
- If you do not want to install and use the agent, leave the field Agent Port empty. Enter an appropriate value either in the Database Driver String or in the JDBC Datasource String field.

**Table 5 Resource Configuration Parameter**

<b>Field Name</b>	<b>Sample Values</b>	<b>Description</b>	<b>Comment</b>
Resource Name	Gen-DB2	The name of the resource.	
Connector Name	GenDB2	The newly added connector	Known as Resource Type on Select Identity 3.3.1.
Authoritative Source*	No	Whether this resource is a system that is considered to be the authoritative source for user data in your environment. Specify Yes if the connector is enabled for reverse synchronization. If the resource is not authoritative, the resource can only modify user entitlements during reverse synchronization.	
Associate to Group		Whether the system uses the concept of groups. For this connector, select this option.	Applicable only for Select Identity 3.3.1.
Server Name	HP0111	Host name or IP address of the database server. You must specify this parameter if the agent was installed.	
Server Port	50000	Port on which the database server is listening. You must specify this parameter if the agent was installed.	
Username	sa	The login name of the database administrative user. You must specify this parameter if the agent was installed.	
Password	P4ssword	Password of the database administrative user. You must specify this parameter if the agent was installed.	
Agent Port	5601	The port where the agent listens for incoming connections. You must specify this parameter if the agent was installed.	

**Table 5 Resource Configuration Parameter**

Field Name	Sample Values	Description	Comment
SQL URL	jdbc:db2	URL to use to communicate with the database over a JDBC connection. You must specify this parameter if the agent was installed.	
Database / Service Name	testDB	The database name in which to provision users. You must specify this parameter if the agent was installed.	
Database Driver String	com.ibm.db2.jcc.DB2Driver	Name of the JDBC driver to connect to the database. You must specify this parameter if the agent was installed.	
Mapping File	Mapping.xml	Mapping file containing the mappings generated by the attribute mapping utility. The mapping file must reside in the install/conf/com/truologica/truaccess/connector/schema/spml directory in order for the Select Identity server to find it.	
JDBC Datasource String	Jdbc/SQLDataSource	JNDI data source name that was created or identified on the Select Identity server that can connect to the target IBM DB2 Universal Database database. Specify a value for this property if the agent was not installed.	
Encryption Specification Algo	kerberosServerPrincipal	Encryption algorithm specification string. Specify this parameter if you wish to use secure communication with DB2.	

**Table 5 Resource Configuration Parameter**

Field Name	Sample Values	Description	Comment
Encryption Algorithm	kdcsv1.sj.ibm.com	Name of the encryption algorithm. Specify this parameter if you wish to use secure communication with DB2.	
Encryption Specification Level	securityMechanism	Encryption level specification string. Specify this parameter if you wish to use secure communication with IBM DB2 Universal Database.	
Encryption Level	3, 7, or 9	Encryption level. Specify 3 if a user ID and password is used as the security mechanism. Specify 7 if a user ID is used. Specify 9 if a user ID and encrypted password is used. Specify this parameter if you wish to use secure communication with DB2.	

\*Instead of creating an authoritative resource, you can create authoritative attributes (in the next step) for the attributes that will be synchronized. Entitlements are authoritative by default in a non-authoritative resource but other attributes are not.

## Map Attributes

After successfully adding a resource for DB2 connector, you must map the resource attributes to Select Identity attributes. Add new attributes to Select Identity if necessary. Refer to the *HP Select Identity Connector Deployment Guide* for more information on mapping and creating attributes.

After mapping the attributes, you can use the connector to create a service, or you can associate the connector with an existing service. Refer to the *Service Studio* chapter of the *HP Select Identity Administration Online Help* for information on Select Identity services.





# 5 Installing the Agent

This chapter gives an overview of the agent for DB2 connector and the procedure to install the agent on an IBM DB2 Universal Database. At the end of the chapter, you will be able to know about:

- The role of an agent.
- The procedure to install the agent.

## About the Agent

The DB2 connector agent performs forward provisioning operations on the resource and sends back any changes made on IBM DB2 Universal Database to Select Identity web service in the form of SPML requests. When a user is added, modified, or deleted in the database, triggers of the agent capture the changes. The agent's reverse synchronization component then sends the changes to Select Identity's Web Service in SPML. If an error occurs during reverse synchronization, the agent stops the operation (without affecting the connector's operations). To achieve reverse synchronization, you must install and configure the agent.

The DB2 agent supports secure channel of communication to Select Identity web service by using HTTPS. You must configure the application server with Secure Socket Layer (SSL). You configure the agent by to enable secure communication between agent and Select Identity in reverse synchronization. The agent automatically imports the certificate from Select Identity and initializes secure communication.

## Installing the Agent on the IBM DB2 Universal Database

After you install the DB2 connector on the Select Identity server, you can install the agent on the database server depending on your installation plan. If you do not need reverse synchronization ([Plan 2](#) and [Plan 3](#)), you can skip this chapter. However, agent installation is mandatory if you need reverse synchronization ([Plan 1](#)). The agent enables you to send data back to Select Identity.

### Prerequisites

Before you start installing the agent on IBM DB2 Universal Database, you must meet the following prerequisites:

- You must generate the XML and XSL mapping files by using attribute mapping utility of Select Identity, if you want to use a customized schema for user provisioning.
- You must copy the mapping files to the resource (IBM DB2 Universal Database) system as the agent installation requires the mapping files to be available on the local system.

- Copy the database driver files (db2jcc.jar, db2jcc\_license\_cisuz.jar, and db2jcc\_license\_cu.jar) to the IBM DB2 Universal Database system and they must be in the database server's CLASSPATH.
- Make sure that Java 1.4.2 (or above) is installed on the system and the environment variable JAVA\_HOME is set. Also, %JAVA\_HOME%\bin must be specified in the PATH system variable.

## Install the Agent

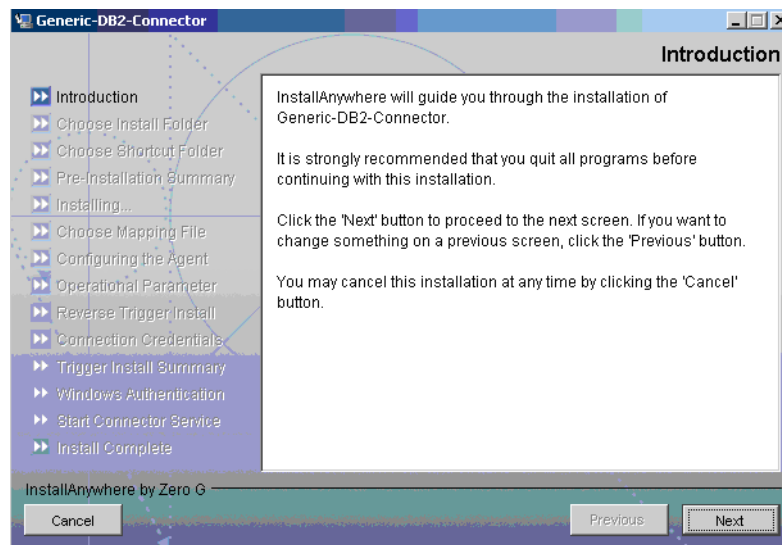
You can install the agent by using the installation wizard. Use one of the following files to extract the agent installer:

- DB2-Gen-AgentInstaller-Win.zip to install the agent on Windows
- DB2-Admin-AgentInstaller-Solaris.tar to install the agent on Solaris

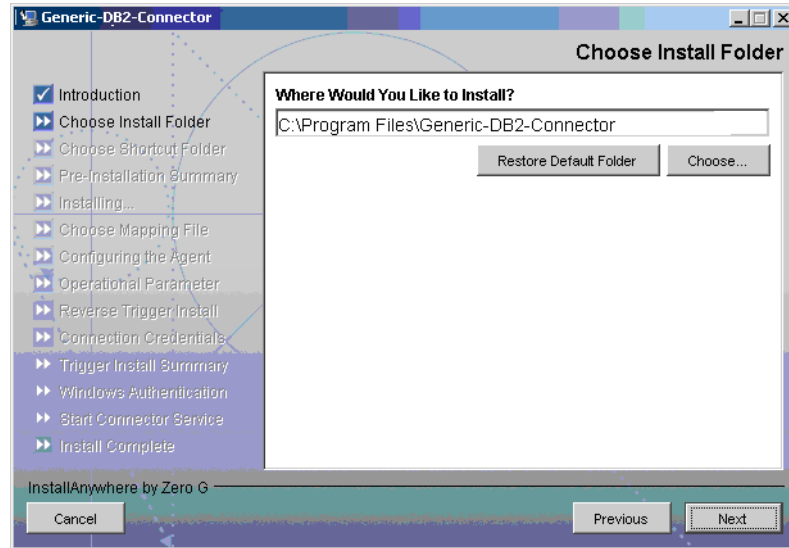
Perform the following steps to install the agent:

### Windows

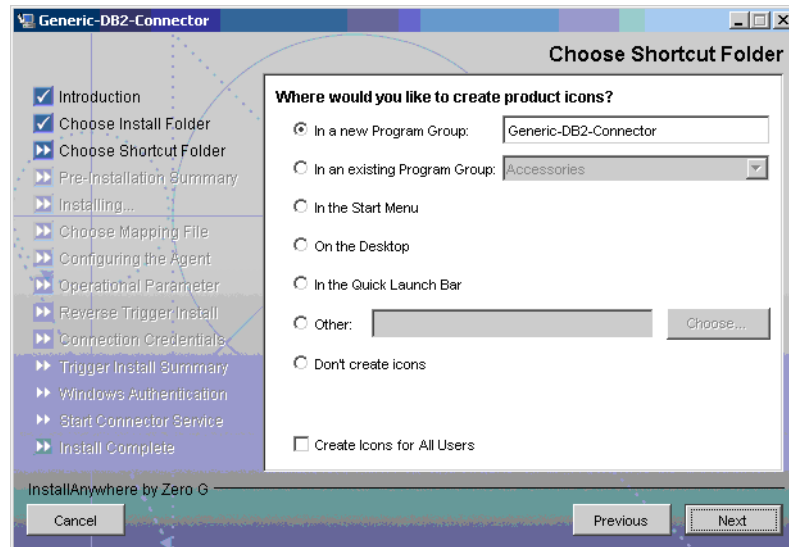
- 1 Extract the contents of the DB2-Gen-AgentInstaller-Win.zip file, which is located in the Agent Installers directory on the CD.
- 2 Run Generic-DB2-Connector-Installer.exe, which is located in the <target\_dir>\CDROM\_Installers\Windows\Disk1\InstData\NoVM. The Introduction screen appears:



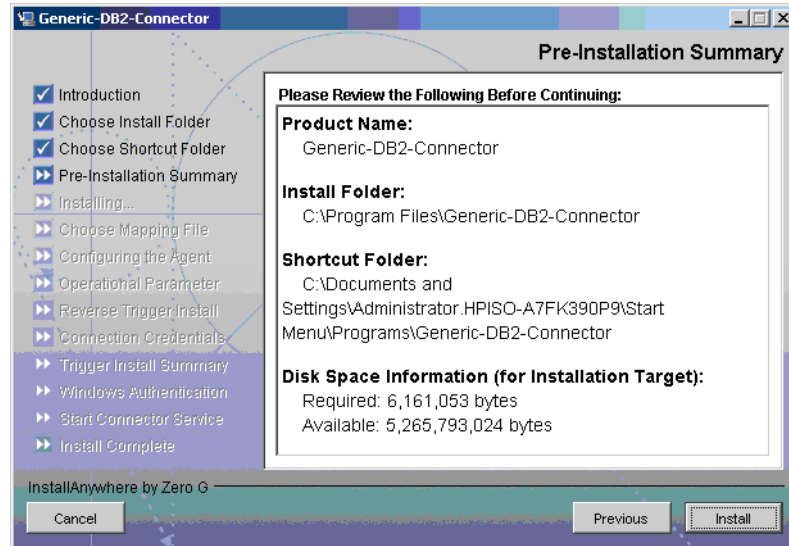
- 3 Click **Next**. The Choose Install Folder screen appears.



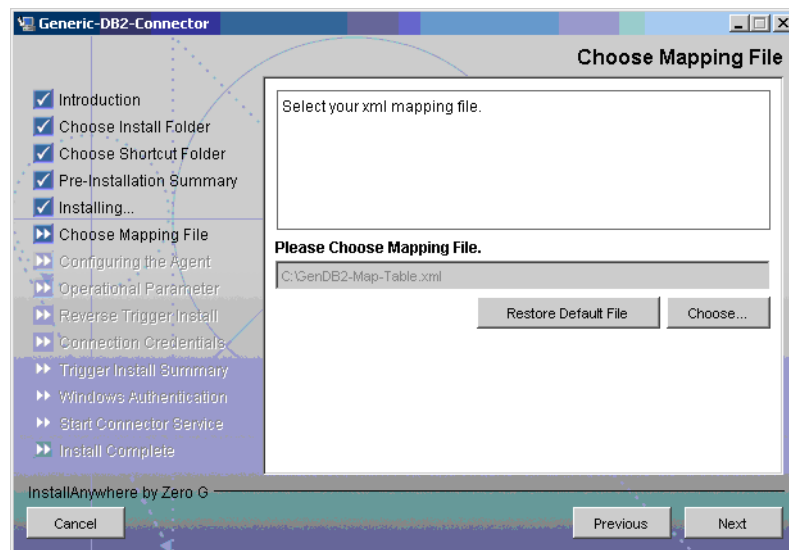
- 4 By default, the agent will be installed in C:\Program Files\Generic-DB2-Connector. Keep the default location, or click **Choose** to specify a different installation location, and then click **Next**. The Choose Shortcut Folder screen appears.



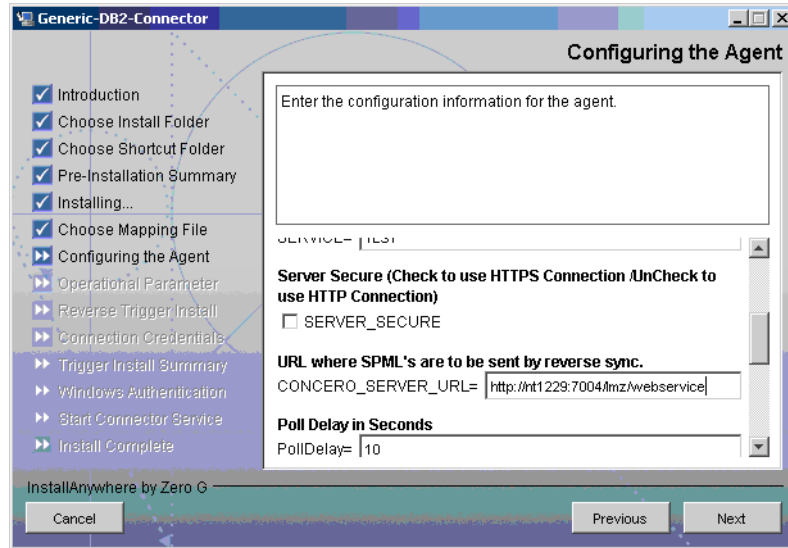
- 5 Select the location(s) where the product icons will be installed, and then click **Next**. The Pre-Installation Summary screen appears.



- 6 Verify the pre-installation summary. If you wish to make changes, click **Previous** and edit the chosen options. To install the agent, click **Install**.
- 7 On the Set CLASSPATH screen, click **Next** after you verify that the database driver files (db2jcc.jar, db2jcc\_license\_cisuz.jar, and db2jcc\_license\_cu.jar) are in the database server's System class path. The Choose Mapping File screen appears.



- 8 Click **Choose** to browse for and select the mapping file. This will copy the mapping file created by attribute mapping utility to the `<install_dir>/conf/com/truologica/truaccess/connector/schema/spml` directory, where `<install_dir>` is the installation folder selected in Step 4 above.
- 9 Click **Next**. The Configuring the Agent screen appears.



10 On the Configuring the Agent screen, specify the required information.

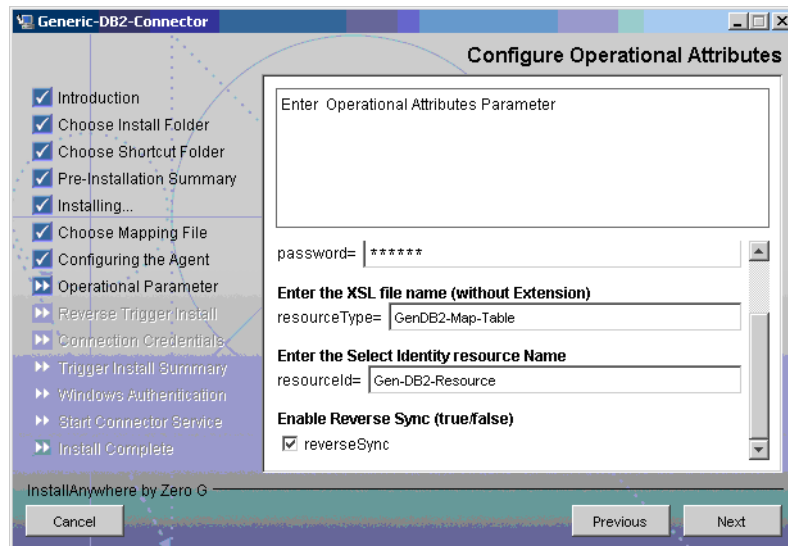
The following table describes the configuration parameters:

Parameter	Description	Example Value
DB_PORT	The port on which the database server is listening.	50000
DB_DRIVER	The JDBC driver for the database connection.	com.ibm.db2.jcc.DB2Driver
DB_URL	The JDBC URL string used for the database communication.	jdbc:db2
SERVICE	The database name.	SI_DB
SERVER_SECURE	Whether communication between the agent and Select Identity must be secure. By default, non-secure communication is used. 0 - HTTP is used. 1 - Secure HTTPS communication is used	Must be checked if the secure communication is required.
CONCERO_SERVER_URL	The URL of the Select Identity Web Service.	http://host:port/lmz/webservice
PollDelay	The polling delay for reverse polling (in seconds).	10

Parameter	Description	Example Value
AGENT_PORT	The port on which the agent listens for user provisioning requests from Select Identity.	5601
MAPPING_FILE	The XML mapping file generated by the Attribute Mapping Utility. If you have not generated the XML file yet, you can change this value later.	Mapping.xml
SPML_DELAY	The delay (in milliseconds) between successive SPML requests sent from the agent. Increase this delay if the network or Select Identity server is performing slowly.	10000
NO_OF_RETRIES	The number of times the agent will retry sending SPML requests in case of failure.	10
DELAY_BETWEEN_RETRIES	The delay (in milliseconds) between each retry.	10000

🚩 To edit any of these values after installation, you can edit the `properties.ini` file, which resides in `install_dir\conf`.

After specifying these values, click **Next**. The Configure Operational Attributes screen appears.



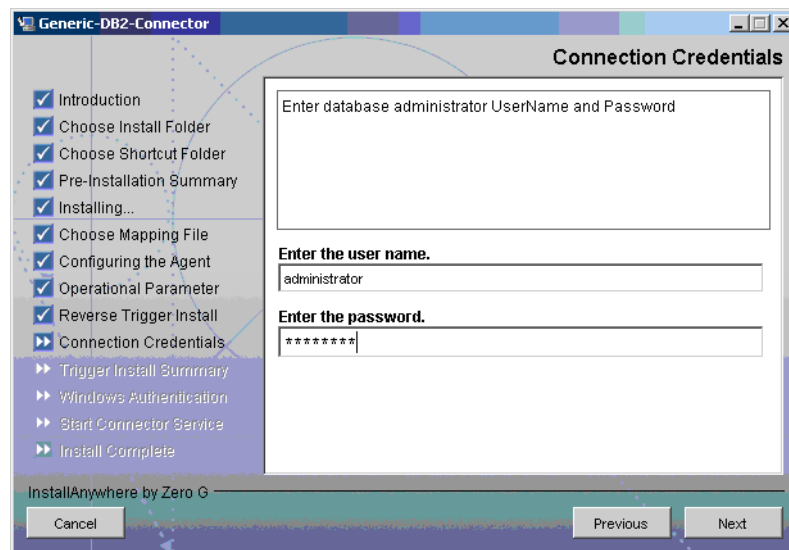
- 11 Provide the operational attributes that are sent to the Select Identity server during reverse synchronization requests. The following table describes the attributes:

Attribute	Sample Values	Description
urn:oasis:names:tc:SPML:1:#UserIDAndOrDomainName	Sisa	User ID of the administrative user on Select Identity.
urn:trulogica:concerro:2.0#password		Password of the administrative user.
urn:trulogica:concerro:2.0#reverseSync	True	Set to true if you want to enable reverse synchronization.
urn:trulogica:concerro:2.0#resourceType	DB2Map	The name of the XSL file (without the .xsl extension) that is used during reverse synchronization.
urn:trulogica:concerro:2.0#resourceId	DB2-Resource	The name of the Select Identity resource that is created for the DB2 connector.

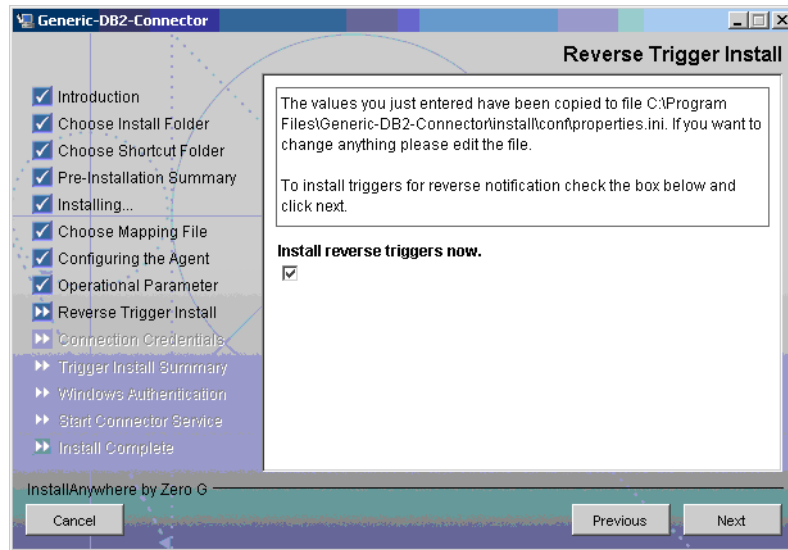


To edit any of these values after installation, you can edit the `opAttributes.properties` file, which resides in `<install_dir>\conf`.

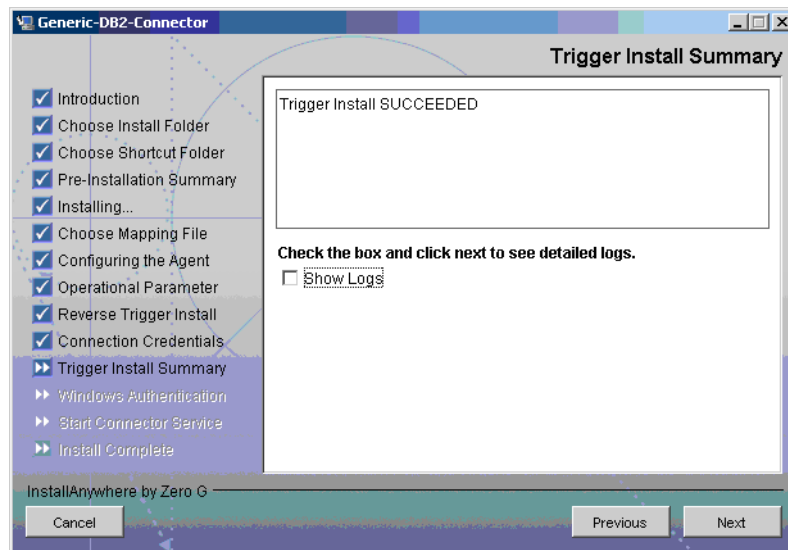
- 12 Click **Next**. The Connection Credentials screen appears.



- 13 Enter the database administrator username and password, and then click **Next**. The Reverse Trigger Install screen appears.

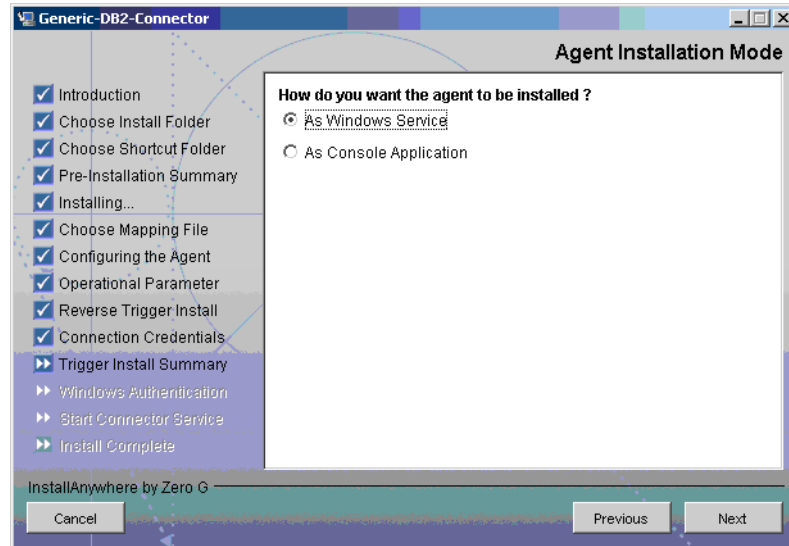


- 14 If you want to enable reverse synchronization, select the Install reverse triggers now check box, and then click **Next**. The Trigger Install Summary screen appears.

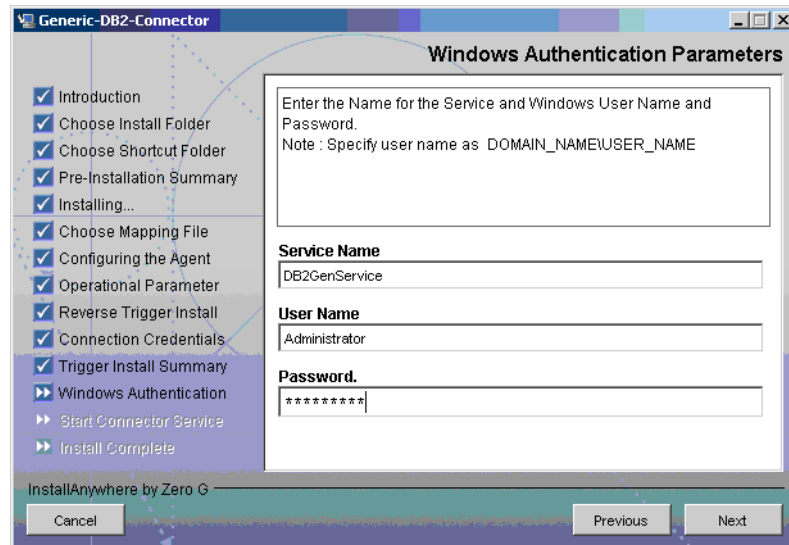


- 15 Select the Show Logs check box to view the log file and click **Next**. The Detailed Log screen appears.
- 16 Click **Next**. The Agent Installation Mode screen appears.

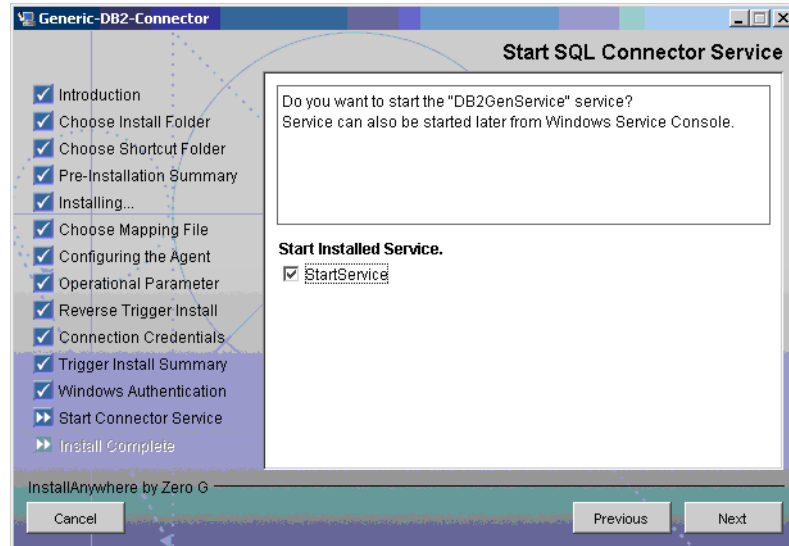




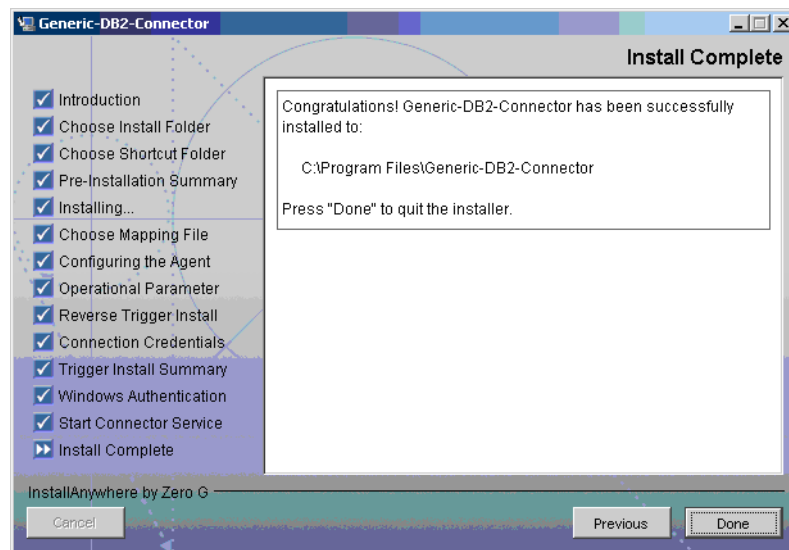
- 17 Select the **As Windows Service** radio button to start the agent as Windows service, and then click **Next**. The Windows Authentication Parameters screen appears.



- 18 Enter the following details:
- Service Name — the name of the agent service.
  - User Name — the administrative user name of the resource system.
  - Password — the administrative password of the resource system.
- 19 Click **Next**. The Start SQL Connector Service screen appears.



- 20 Select the StartService check box to start the agent service immediately after the installation, and then click **Next**. The Install Complete screen appears.



- 21 Click **Done**.

## Solaris

Complete the following steps to run the installation wizard, which installs the agent on UNIX:

- 1 Extract the contents of the `DB2-Admin-AgentInstaller-Solaris.tar` file, which is located in the `Agent Installers` directory on the CD, to a directory that will server as the agent's home directory. (Use the `tar xvf` command to extract contents of the TAR file.) This will create the required directory structure in the `DB2-Gen-AgentInstaller-Solaris` subdirectory of the home directory.
- 2 Set the `JAVA_HOME` environment variable to the directory where the JDK 1.4 is installed. Also, add the `JVM` to the system `PATH` variable.

- 3 Add the JDBC 2.0 compliant driver file (db2jcc.jar, db2jcc\_license\_cisuz.jar, and db2jcc\_license\_cu.jar) for the database to the CLASSPATH.

- 4 Start the wizard by running the following command:

```
agent_home/DB2-Gen-AgentInstaller-Solaris/GenericDB2Connector.bin
```

The following message appears:

```
=====
Extracting the installation resources from the installer archive...
Configuring the installer for this system's environment...
Launching installer...
Preparing CONSOLE Mode Installation...
=====
```

```
(created with InstallAnywhere by Zero G)
-----
```

```
Choose Install Folder
-----
```

```
Where would you like to install?
Default Install Folder: /Generic-DB2-Connector
ENTER AN ABSOLUTE PATH, OR PRESS <ENTER> TO ACCEPT THE DEFAULT:
```

- 5 Specify the installation location of the agent. Enter a path and press **ENTER**, or simply press **ENTER** to accept the default path. The following message appears:

```
=====
Choose Link Location
-----
Where would you like to create links?
->1- Default: /
2- In your home folder
3- Choose another location...
4- Don't create links
ENTER THE NUMBER OF AN OPTION ABOVE, OR PRESS <ENTER> TO ACCEPT THE
DEFAULT:
```

- 6 Select where you would like the agent shortcut location to be created. Select the number of the desired option as shown and press **ENTER**, or simply press **ENTER** to accept the default. The following message appears:

```
=====
Pre-Installation Summary
-----
Please Review the Following Before Continuing:
Product Name:
Generic-DB2-Connector
Install Folder:
/install_dir
Link Folder:
/
Disk Space Information (for Installation Target):
Required: xxx bytes
Available: yyy bytes
PRESS <ENTER> TO CONTINUE:
```

- 7 Verify the pre-installation summary and press **ENTER**. The following message appears:

```

=====
Installing...
-----
[=====|=====|=====|=====]
[-----|-----|-----|-----]
=====

```

Configuring the Agent

```

-----
Enter the port number where database server listens. Hit <ENTER>
to accept default.
Enter DB_PORT : (DEFAULT: 50000 ):
```

- 8 Specify the database port number and press **ENTER** to continue. Or, simply press **ENTER** to accept the default. The following message appears:

```

=====
Configuring the Agent
-----

```

```

Enter the driver string (Driver string to be used by Java
program to connect to the database).
Enter the database driver : (DEFAULT: com.ibm.db2.jcc.DB2Driver):
```

- 9 Enter the database driver and press **ENTER** to continue. Or, simply press **ENTER** to accept the default. The following message appears:

```

=====
Configuring the Agent
-----

```

```

Enter the driver URL (URL to be used by Java program to connect
to the database).
Enter the database URL : (DEFAULT: jdbc:db2):
```

- 10 Enter the JDBC URL and press **ENTER** to continue. Or, simply press **ENTER** to accept the default. The following message appears:

```

=====
Configuring the Agent
-----

```

```

Enter the database service name.
Enter the service name : (DEFAULT: ): SIDB
```

- 11 Enter the database name and press **ENTER** to continue. Or, press **ENTER** to accept the default. The following message appears:

```

=====
Configuring the Agent
-----

```

```

Enable Server Secure (Y/N) ?
Enable Server Secure : (DEFAULT: N) : y
```

- 12 To enable secure communication, enter y and press **ENTER** to continue. Or, press **ENTER** to accept the default. The following message appears:

```

=====
Configuring the Agent
-----

```

```

Enter the URL where spml is to be sent by reverse sync.
Enter the concero server URL : (DEFAULT: ): http://
localhost:7001/lmz/webservice
```

- 13 Enter the URL of the Select Identity Web Service, which is where SPML requests are sent and press **ENTER** to continue. (If secure communication is enabled, be sure to specify the Web Service URL with HTTPS.) Or, press **ENTER** to accept the default. The following message appears:

```
=====
Configuring the Agent
-----
Enter the interval (in seconds) at which polling is desired for
reverse sync.
Enter poll delay : (DEFAULT: 10):
```

- 14 Enter the polling interval (in seconds) that is used by the agent to check for changes on the resource that must be sent to the Select Identity server (during reverse synchronization), then press **ENTER**. Or, simply press **ENTER** to accept the default. The following message appears:

```
=====
Configuring the Agent
-----
Enter the port where the agent should listen.
Enter the agent port : (DEFAULT: ):6000
```

- 15 Enter the listening port number for the agent and press **ENTER**. Or, simply press **ENTER** to accept the default and continue. The following message appears:

```
=====
Configuring the Agent
-----
Enter the time (in milli seconds) for which the agent should
wait before sending SPML.
Enter the spml delay : (DEFAULT: 100):
```

- 16 Specify the delay (in milliseconds) that the agent will wait before sending SPML requests to the Select Identity server and press **ENTER**. Or, simply press **ENTER** to accept the default and continue. The following message appears:

```
=====
Configuring the Agent
-----
Enter the Number of Retries to send SPML
Number of Retries to send SPML : (DEFAULT: 3): 5
```

- 17 Specify the number of times agent will attempt to send SPML requests after a failure to the Select Identity server, and press **ENTER**. Or, simply press **ENTER** to accept the default and continue. The following message appears:

```
=====
Configuring the Agent
-----
Enter the time (in milliseconds) This is Delay Between Retries
(Number of mSec the agent will wait before going to next Retry)
Enter the spml retry delay : (DEFAULT: 100): 10000
```

- 18 Specify the delay (in milliseconds) for which agent should wait before attempting to send SPML requests again after a failure to the Select Identity server, and press **ENTER**. Or, simply press **ENTER** to accept the default and continue. The following message appears:

```
=====
Configuring the Agent
-----
```

Enter Directory Path of the XML mapping file. (e.g. If the mapping file is "/osd5/trulogica/xxx.xml", enter "/osd5/trulogica/" including slashes)  
Directory Path of the XML mapping file. (DEFAULT: ): /opt/

- 19 Enter the path to the mapping file (include trailing slashes but do not include the file name) and press **ENTER**. Or, simply press **ENTER** to accept the default. The following message appears:

```
=====
Configuring the Agent
-----
Enter name of the XML mapping file. (Enter extension also.)
Name of the XML mapping file. (Enter extension also.) (DEFAULT:
) : xxx.xml
```

- 20 Enter the name of the mapping file and press **ENTER**. Or, simply press **ENTER** to accept the default. The following message appears:

```
=====
XML Mapping Path
-----
This is your directory path of Mapping File
"/opt/"
This is the Mapping File
"xxx.xml"
Is it Correct Path?(Y/N) (DEFAULT: Y): y
```

- 21 Press **ENTER** to accept the default (y) or enter n and press **ENTER** to change the values. If you enter y, the following message appears:

```
=====
Configure Operation Attribute Parameter
-----
Enter Select Identity Admin Username
Select Identity Admin Username : (DEFAULT: ): sisa
```

- 22 Specify the Select Identity administrator's user name and press **ENTER**. The following message appears:

```
=====
Configure Operation Attribute Parameter
-----
Please Enter the Encrypted Select Identity Admin User's
Password: abc123
```

- 23 Enter the administrator's password then press **ENTER**. The following message appears:

```
=====
Configure Operation Attribute Parameter
-----
Enter the XSL file name (without Extension)
XSL file name (without Extension): (DEFAULT: ): DB2map
```

- 24 Enter the name of XSL file on Select Identity server. Make sure that the extension (.xsl) is not specified. Then, press **ENTER**. The following message appears:

```
=====
Configure Operation Attribute Parameter
-----
Enter the Select Identity resource name
```

Select Identity resource name : (DEFAULT: ): GenDB2Resource

- 25 Enter the name of the Select Identity IBM DB2 Universal Database resource then press **ENTER**. The following message appears:

```
=====
Configure Operation Attribute Parameter
-----
do you want to Enable Reverse Sync(true/false)?
Enable Reverse Sync? (Y/N) (DEFAULT: Y): y
```

- 26 Specify whether you want to enable reverse synchronization; enter n or y then press **ENTER**. The following message appears:

```
=====
Reverse Trigger Install
-----
The values you just entered have been copied to file\
Generic-DB2-Connector\conf\properties.ini. If you want to change
anything please edit the file.
Do you want to install reverse notification triggers now? (Y/N)
(DEFAULT: Y) : y
```

- 27 To enable reverse synchronization, you must install the reverse triggers. Enter y and press **ENTER** to install the triggers (or simply press **ENTER** to accept the default), or enter n and press **ENTER** to bypass this installation. If you enter y, the following message appears:

```
=====
Connection Credentials
-----
Enter user name.
Enter user name : (DEFAULT: ): TEST
```

- 28 To specify credentials to install the triggers in the database, specify a user name and press **ENTER**. Or, leave this prompt blank and press **ENTER**. The following message appears:

```
=====
Connection Credentials
-----
This installation requires a password to continue.
Enter password : : password
```

- 29 If you specified a user name, enter a password and press **ENTER**. The following message appears:

```
=====
command
-----
calling the command "//Generic-DB2-Connector/Setup.sh" -userName
"TEST" -password password
PRESS <ENTER> TO CONTINUE: y
```

- 30 Press **ENTER** to continue. The trigger pre-installation summary appears indicating whether the installation of the triggers succeeded or failed:

```
=====
Reverse Trigger Install Summary
-----
Reverse Trigger Install SUCCESS. Please see the logs for
```

details.  
PRESS <ENTER> TO CONTINUE: y

- 31 Press **ENTER** to continue. The following message appears:

```
=====
View Logs
-----
Do you want to see detailed logs? (Y/N) (DEFAULT: Y): y
```

- 32 If you wish to view the installation log file, enter **y** and press **ENTER**. Otherwise, enter **n** and press **ENTER**. The following message appears:

```
=====
Agent Installation Mode
-----
Do you want to install agent as a Daemon process? (DEFAULT: Y)
```

- 33 To install the agent as a UNIX daemon, enter **y**, and then press **ENTER**. If you enter **y**, the following message appears:

```
=====
Get User Input
-----
Enter requested information
Enter Application Name for Daemon (DEFAULT: ): DB2GenAgent
```

- 34 Enter the daemon name and press **ENTER**. The following message appears:

```
=====
Daemon Status
Starting DB2GenAgent...
PRESS <ENTER> TO ACCEPT THE FOLLOWING (OK):
=====
Summary
-----
Congratulations! Generic-DB2-Connector has been successfully installed
to:
/space/Generic-DB2-Connector
PRESS <ENTER> TO CONTINUE:
```

- 35 To exit the installation wizard, press **ENTER**.



## Installed Files

The following provides a listing of the directories and files installed for the agent:

Directories and Files	Description
agent_home/	Contains the following files: <ul style="list-style-type: none"><li>• AddToStartupGroup.cmd/sh — Adds icons to startup group.</li><li>• CopyFile.cmd/sh — Used by agent to copy files.</li><li>• DelFile.cmd/sh — Used by agent to delete files.</li><li>• setup.cmd/sh — Installs the reverse triggers.</li><li>• SQLConnectorConsole.cmd/sh — Starts the agent as a console.</li><li>• sqlapp.jar — Agent library JAR.</li><li>• SQLConnectorConsole.cmd/sh — Starts the agent.</li><li>• uninstall.cmd/sh — Uninstalls triggers.</li><li>• passwordEncrypt.cmd/sh — Utility to populate Properties.ini and opAttributes.properties file with encrypted password.</li><li>• PortTest.cmd/sh — The utility to check the availability of the port number mentioned in Properties.ini for agent.</li><li>• LogonTest.cmd/sh — Utility to check the database connectivity.</li></ul>
agent_home/conf/	Contains the following files: <ul style="list-style-type: none"><li>• properties.ini — Provides configuration settings for the agent.</li><li>• opAttributes.properties — Provides configuration settings for reverse synchronization.</li><li>• log4j.properties — Provides settings for logging.</li></ul>
agent_home/conf/com	Contains the trulogica/truaccess/connector/schema/spml directory structure where the XML mapping file is stored.

Directories and Files	Description
agent_home/lib/	Contains JAR files used by the agent.
agent_home/logs	Contains log files produced by the agent.
agent_home/Uninstall_Generic-DB2-Connector/	Contains files for uninstalling the agent. This subdirectory is created only if the agent is installed using the installation wizard.

## Starting the Agent

To start the agent, run `SQLConnectorConsole.cmd` (on Windows) or `SQLConnectorConsole.sh` (on Solaris), which resides in the agent's home directory. This program logs in to the database server using the user name and password of a user who has administrative privileges on the database.

The following is an example you can use on Windows:

```
<agent_home>/SQLConnectorConsole.cmd
```

If you start the agent before or without configuring reverse synchronization (the reverse riggers), a message is displayed stating that reverse trigger is disabled.

## Operating the Agent Daemon

If you install the agent on Solaris platform, perform the following steps to start or stop the daemon of the agent:

- 1 Go to the `<agent_home>/bin` directory.
- 2 Run the following command to start the daemon:

```
$ ./SQLConAgent start
```
- 3 Run the following command to stop the daemon:

```
$ ./SQLConAgent stop
```
- 4 Run the following command to view the status of the daemon:

```
$ ./SQLConAgent status
```

## Modifying the Database Account and Select Identity Passwords

After the agent is installed, if you change the database account password or the Select Identity administrative password, you must update the agent with the change.

Perform the following steps on IBM DB2 Universal Database machine to update password change to the agent.

- To update the change in database password, run the following command on the Windows command prompt:

```
<install_dir>\passwordEncrypt.cmd -r <db-password>
```

where *<install\_dir>* is the location of the agent and *<db-password>* is the new database password.

- To update the change in Select Identity administrative password, run the following command on the Windows command prompt:

```
<install_dir>\passwordEncrypt.cmd -s <ovsi-password>
```

where *<install\_dir>* is the location of the agent and *<ovsi-password>* is the new Select Identity password.



## 6 Uninstalling the Connector

If you want to uninstall DB2 connector from Select Identity, perform the following steps:

- Remove all resource dependencies.
- Delete the connector from Select Identity.
- Delete the connector from application server.
- Uninstall the agent.

See *HP Select Identity Connector Deployment Guide* for more information on deleting the connector from application server and Select Identity.

### Uninstalling the Agent on Windows

Perform the following steps to delete the agent on the Windows server:

- 1 Select **Programs** → **Generic-DB2-Connector** → **Uninstall Agent** from the Start menu. The wizard appears.
- 2 Click **Next** on the introductory dialog.
- 3 Provide the database credentials to uninstall the reverse triggers, if they were installed. Then, click **Uninstall**.
- 4 Click **Continue** when the pop-up dialog indicates that the triggers were successfully uninstalled.
- 5 Click **Done** on the Uninstall Complete dialog to close the wizard.

### Uninstalling the Agent on Solaris

Perform the following steps to delete the agent on the Solaris server:

- 1 Start the wizard by running the following command:  
**agent\_home/Uninstall\_Generic-DB2-Connector/  
Uninstall\_Generic-DB2-Connector**

The following message appears:

```
=====
Preparing CONSOLE Mode Installation...
=====
(created with InstallAnywhere by Zero G)
-----
Chapter 4
56
```

```
=====
Uninstall Generic-DB2-Connector
-----
About to uninstall...
Generic-DB2-Connector
This will remove features installed by InstallAnywhere. It will
not remove files and folders created after the installation.
PRESS <ENTER> TO CONTINUE:
```

- 2 Press **ENTER** to continue. The following message appears:

```
=====
Get User Input
-----
Enter requested information
Enter user name : (DEFAULT: ): TEST
```

- 3 Enter the database user name and press **ENTER**. The following message appears:

```
=====
Get User Input
-----
Enter requested information
Enter password : (DEFAULT: ): password
```

- 4 Enter the user's password and press **ENTER**. The installer removes the reverse triggers (if installed) and displays a success or failure message, as follows:

```
=====
Executed the command
-----
"/Generic-DB2-Connector/Uninstall.sh" -userName "TEST" -password
"password"
Reverse Trigger Uninstall Summary
Reverse Trigger Uninstall SUCCEEDED.
```

- 5 To view the log file, select the Show Logs and press **ENTER**.
- 6 Press **ENTER** to exit the wizard.

# A Troubleshooting

This appendix describes common problems encountered during the installation and use of the connector and its agent.

## Connector Installation

This section lists the common problems encountered during installation and use of the connector.

- After redeploying the connector, Select Identity does not display the current connector information.  
*Possible Cause:* The application is using a cached connector file.  
*Solution:* Restart the application server.
- Select Identity does not display the most current mapping file information.  
*Possible Cause:* The application server is using a cached mapping file.  
*Solution:* Restart the application server.
- The mapping file of an existing resource is changed and, when you attempt to modify the resource to add a new mapping file, the following error displays:  

```
Application cannot be modified at this time
```

  
*Possible Cause:* Major differences may exist between the old and new mapping files.  
*Solutions:*
  - Create a new resource with the new mapping file.
  - Unmap all attributes in the current resource and modify the resource to reference the new mapping file. You cannot use this second solution, however, if users were provisioned using this resource.
- Select Identity can successfully add a user but the new user is not shown in the resource's database table.  
*Possible Causes:*
  - The mapping file lacks the CREATE operation for the USER ENTITY.
  - The mapping file lacks the CREATE operation for the Key attribute and other attributes.  
*Solution:* Add the CREATE operation to the Entity/Attribute using the Attribute Mapping utility. Refer to *Appendix F : Attribute Mapping Utility* of the *HP Select Identity Concepts and Administration Guide* for details on how to add create operations for an entity.

## Agent and Trigger Installation

This section lists the common problems encountered while installing and configuring reverse synchronization.

- A `NullPointerException` occurs

*Possible Cause:* The specified mapping file is not available in the class path.

*Solution:* Make sure that the file is placed in the `Install/conf` directory. Ensure the name of the file specified in `properties.ini` is spelled correctly. Note that it is case sensitive. Also, check the format of the mapping file.

- The following error message is displayed:

```
Can't create view dbo.DBA_USERS Message received from the database: There is already an object named ... Cannot proceed.
```

*Possible Cause:* You are attempting to reinstall the agent without removing previously installed database tables.

*Solution:* Uninstall the agent as documented in [Uninstalling the Connector](#) on page 45. This removes previously installed tables. Then, run the agent installation wizard again.

- The following error message is displayed:

```
Database error: Triggers and Referential constraint cannot co-exist.
```

*Possible Cause:* DB2 Database will not allow the installation of triggers on the tables that have `ON CASCADE DELETE` as `Y` for referential constraints.

*Solution:* Set the `CASCADE DELETE` option to `N` for the referential constraints.

- The following error message is displayed even if proper login credentials are provided:

```
Error in Login Invalid Login Credentials.
```

*Possible Cause:* The IBM DB2 Universal Database is configured for `SECURE JDBC` and this has not been configured in the `properties.ini` file.

*Solution:* Set the `SECURE_JDBC` flag to `1` in the `INI` file.

- The agent installation wizard fails to start and displays an error message.

*Possible Cause:* The JVM is not in the system `PATH` environment variable or Java 1.4 is not available.

*Solution:* Add the Java 1.4 to the system `PATH`.

- While deploying the reverse synchronization tables, the installation stops and displays an exception.

*Possible Cause:* The version of Java being used is older than 1.4.

*Solution:* Set the `JAVA_HOME` variable to the path of Java version 1.4.

- During agent installation, error message appears displaying `Invalid Login credentials` even though correct values are provided for database username and password.

*Possible Causes:*

- `JAVA_HOME` environment variable is not set correctly or not set at all.
- The JDBC driver JARs are not placed in system `CLASSPATH`.
- The `commons-logging.jar` is present in the `JAVA_HOME/jre/lib/ext` folder.



- Other reasons that are not displayed in the log file.

*Solutions:*

- Set the `JAVA_HOME` up to the path from where the `bin` folder containing the `java.exe` file is accessible.
- Update the system `CLASSPATH` with paths `JDBC Jars`.
- Place the `log4j-1.2.8.jar` file along with the `commons-logging.jar` file in the same path.
- If the possible solutions mentioned above do not work, use `LogOnTest.cmd/sh` utility provided with the agent to debug the issue. You must run the utility from the command prompt as:

```
<agent_home_folder>/LogonTest.cmd -userName <db_username> -Password  
<db_password>
```

This will try to establish connection to the database and display the result/error on the command window.

- While registering the Agent as a service, the Windows account name given is not accepted.

*Possible Causes:*

- The complete Windows account name (`<Domain_Name>/<user name>`) is not given.
- The local account is given in the form `localhost\administrator`.

*Solutions:*

- The installer needs the complete Windows username (with Domain Name) for registering the agent as service.
- The account names with `localhost` are not supported. Instead, machine name can be prefixed for local accounts. For example, `machine1\Administrator`.
- An error message appears displaying `CREATE VIEW permission denied` in database while deploying the agent.

*Possible Causes:* The database user account used does not have all the necessary privileges to the database.

*Solutions:* Select a user with proper privileges to install the agent.

- An error message appears displaying `Class Not Found Exception` caught `Can not establish connection to the DB` while deploying the agent.

*Possible cause:* The `JDBC Driver` files are not in system `CLASSPATH` of database server machine.

*Solutions:* Place the `JDBC JAR` files in system `CLASSPATH`.

- The agent service is registered but not starting.

*Possible Causes:*

- The user account provided does not have sufficient privileges.
- Multiple instances of `JVM` are running on the machine and agent is being invoked by an unsupported version of `JRE` (1.3 or 1.5). In this case, the logs show the following error:

```
Wrapper Started as Service  
Launching a JVM...
```

```
| WrapperSimpleApp: Unable to locate the class
com.truologica.sql.conncore.commanager.ComManager:
java.lang.UnsupportedClassVersionError:com/truologica/truaccess/
connector/exception/TACConnectorException (Unsupported major.minor
version 48.0)
```

*Solutions:*

- Go to the Services window, right-click on the newly registered agent service, go to Properties, and then go to the LogOn tab. If This Account option is selected, cancel that selection and select the Local System Account option.
- Check the system if JREs of different versions are installed. Make sure that only JRE 1.4 is running and available in system PATH variable and JAVA\_HOME.

## Agent Execution

This section lists the common problems encountered while running the agent.

- An exception similar to the following is displayed:  

```
java.net.BindException: Address in use: JVM_Bind
```

Possible Cause: The listening port on the agent's system is in use, possibly by another invocation of the agent.

Solution: Stop the older invocation and run the agent again.
- An error message similar to the following is displayed:  

```
Invalid Object schema.tableName
```

Possible Cause: The schema specified in the mapping file is incorrect.

Solution: Check the mapping file. For more information on the format of mapping file, see the *Appendix F* of *HP Select Identity Concepts and Administration Guide*.
- The agent console shows a Log4jFactory exception when started.  

Possible Cause: The agent cannot find the log4j-1.2.8.jar in the classpath.

Solution: Add the JAR to the class path.
- Error message appears displaying The system cannot find the path specified while running/starting the agent.  

*Possible Cause:* The agent is not able to find JAVA in system PATH.

*Solutions:* Make sure that JAVA\_HOME variable is set on database server machine and JAVA is available in system PATH.
- Reset Password reverse synchronization request is shown to be successfully sent in agent logs but no request status update on Select Identity and the password not updated on Select Identity.  

*Possible Cause:* The Recon Filter in the User Reconciliation Policy of resource created on Select Identity for IBM DB2 Universal Database is not set to ExtendedSPMLRequestFilter.

*Solution:* The extended request sent by agent for reset password is not readily accepted by Select Identity. The Recon Filter setting is required to allow Select Identity to accept the extended request.