

WinRunner®
Terminal Emulator Add-in
Installation Guide
Version 7.01



MERCURY INTERACTIVE

WinRunner Terminal Emulator Add-in Installation Guide, Version 7.01

© Copyright 1994 - 2001 by Mercury Interactive Corporation

All rights reserved. All text and figures included in this publication are the exclusive property of Mercury Interactive Corporation, and may not be copied, reproduced, or used in any way without the express permission in writing of Mercury Interactive. Information in this document is subject to change without notice and does not represent a commitment on the part of Mercury Interactive.

Mercury Interactive may have patents or pending patent applications covering subject matter in this document. The furnishing of this document does not give you any license to these patents except as expressly provided in any written license agreement from Mercury Interactive.

Mercury Interactive and Design, M and Design, WinRunner, XRunner, LoadRunner, TestDirector, TestSuite, WebTest, Astra, Astra SiteManager, Astra SiteTest, SiteRunner, FreshWater Software, SiteScope, and SiteSeer Astra QuickTest, Astra LoadTest, Astra FastTrack, RapidTest, QuickTest, Visual Testing, Action Tracker, Link Doctor, Change Viewer, Dynamic Scan, Fast Scan, Visual Web Display, ActiveTest, ActiveTest SecureCheck, ActiveWatch, POPs on Demand, Topaz, Topaz ActiveAgent, Topaz Observer, Topaz Prism, Topaz Delta, Topaz Rent-a-POP, Topaz Open DataSource, Topaz AIMs,

This document also contains registered trademarks, trademarks and service marks that are owned by their respective companies or organizations. Mercury Interactive Corporation disclaims any responsibility for specifying which marks are owned by which companies or organizations.

If you have any comments or suggestions regarding this document, please send them via e-mail to documentation@merc-int.com.

Mercury Interactive Corporation
1325 Borregas Avenue
Sunnyvale, CA 94089 USA

WRTEIG7.01/01

Table of Contents

Before You Install	1
System Requirements	1
Installing Terminal Emulator Support	3
Installing Terminal Emulator Support	3
Connecting a Terminal Emulator to WinRunner	14
Rumba 5.1 or Higher	14
Extra 6.3 or Higher	15
NetSoft Elite 2.2x or Higher	15
Reflection 6.2.....	16
Disabling Terminal Emulator Support	17

Terminal Emulator Add-in Installation Guide

Before You Install

Welcome to the Terminal Emulator Add-in for WinRunner 7.01. This guide describes how to install the add-ins on a standalone computer and on a network. It describes the Terminal Emulator package contents, system configuration, and how to run the setup program.

Before you begin to install the Terminal Emulator Add-in, please review the following pre-installation procedures.

System Requirements

To successfully run the Terminal Emulator Add-in for WinRunner 7.01, you need the following minimum system requirements:

Platform	An IBM-PC or compatible with a Pentium® /100MHz or higher microprocessor.
Memory	A minimum of 32 MB of RAM memory.
Disk Space	In addition to the space required for the WinRunner installation, you need 6 MB for the add-in. Please refer to the <i>WinRunner Installation Guide</i> for more information about WinRunner installation requirements. (An additional 5 MB of free disk space is required during the installation process.)
Operating System	Windows 95, Windows 98, Windows NT 4.0, Windows 2000, or Windows Me.
Prerequisites	WinRunner 7.01 installation.

Terminal Emulator Add-in Installation Guide

Installing Terminal Emulator Support

The Terminal Emulator Add-in CD-ROM contains a setup program for testing terminal emulator applications, including date manipulation testing on these applications. Note that date manipulation testing support for GUI applications is included in WinRunner 7.01.

Note: Before you install the add-in support, you must have WinRunner 7.01 installed on your computer. Refer to the *WinRunner Installation Guide* for information on installing WinRunner.

Installing Terminal Emulator Support

The setup program installs Terminal Emulator support in your WinRunner installation folder.

To install Terminal Emulator support:

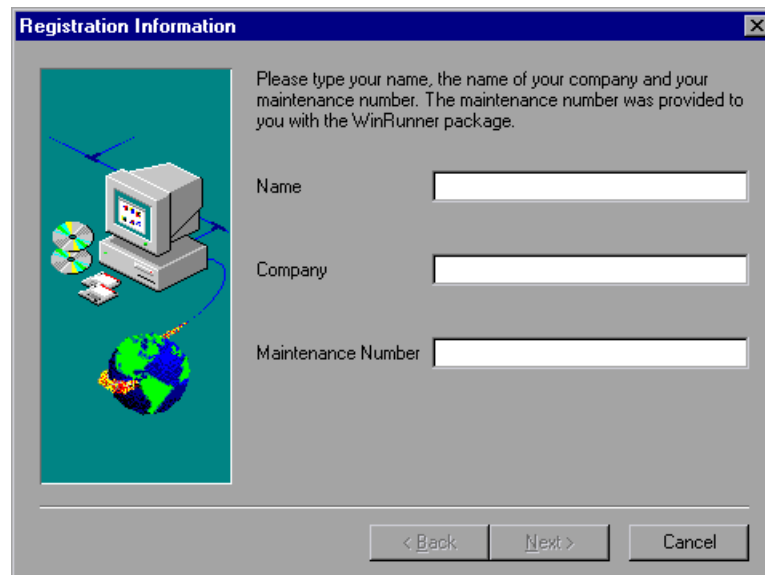
- 1** Insert the CD-ROM into the CD-ROM drive. If the CD-ROM is on your local drive, the WinRunner Setup window opens. If you are installing from a network drive, map to it and run *autorun.exe*.



If you want to view the Readme file, click **Readme**. If you want to browse the CD-ROM, click **Browse**.

- 2** Click **Install**. The Setup progress bar opens.

- 3** In the **Registration Information** screen, type your name, the name of your company, and a WinRunner maintenance number. This number can be found in the Maintenance Pack Number envelope or on the bill of lading you received when you purchased WinRunner. Note that there is a single maintenance number for each team of users. (The maintenance number replaces what was formerly a serial number for each purchased copy of WinRunner. The maintenance number identifies the customer.)

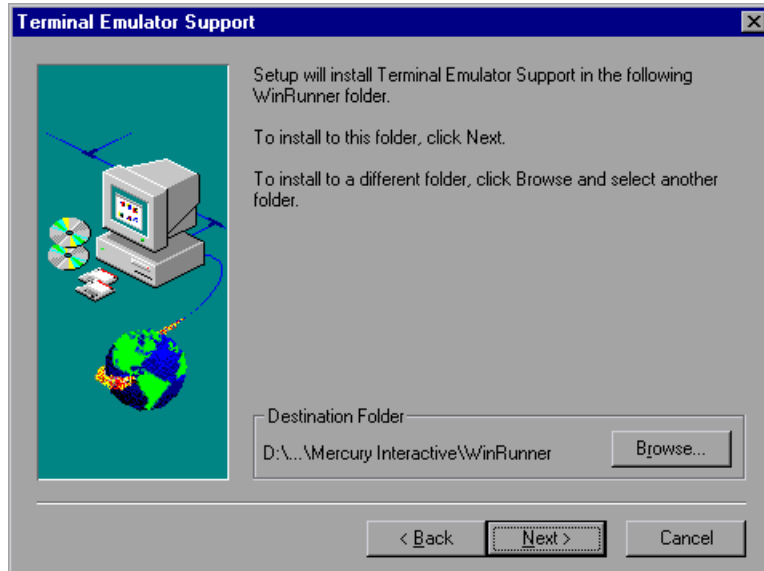


The image shows a Windows-style dialog box titled "Registration Information". On the left side, there is a graphic illustration of a computer monitor, a CD-ROM, and a globe. To the right of the graphic, there is a text instruction: "Please type your name, the name of your company and your maintenance number. The maintenance number was provided to you with the WinRunner package." Below this text are three input fields labeled "Name", "Company", and "Maintenance Number". At the bottom of the dialog box, there are three buttons: "< Back", "Next >", and "Cancel".

Click **Next**.

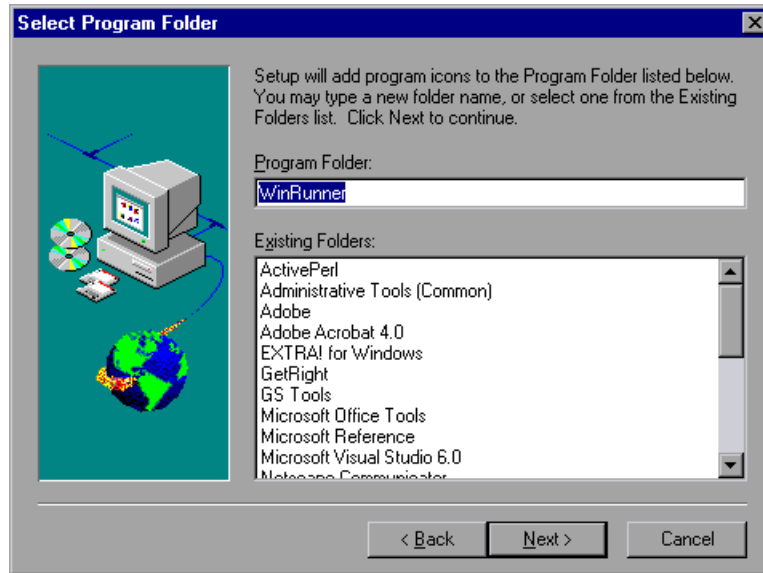
- 4** Click **Yes** to confirm the registration information.

- 5 Setup will install Terminal Emulator Support in the WinRunner folder indicated in the Terminal Emulator Support screen.



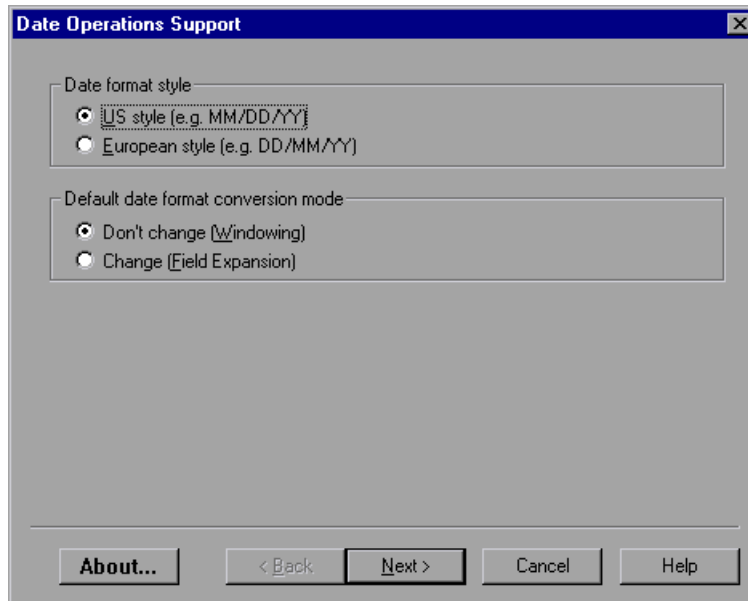
Click **Next**.

- 6 Select the program folder for the Terminal Emulator Add-in icons.



Click **Next**. The setup program begins installing files. To pause or quit the installation, click **Cancel**.

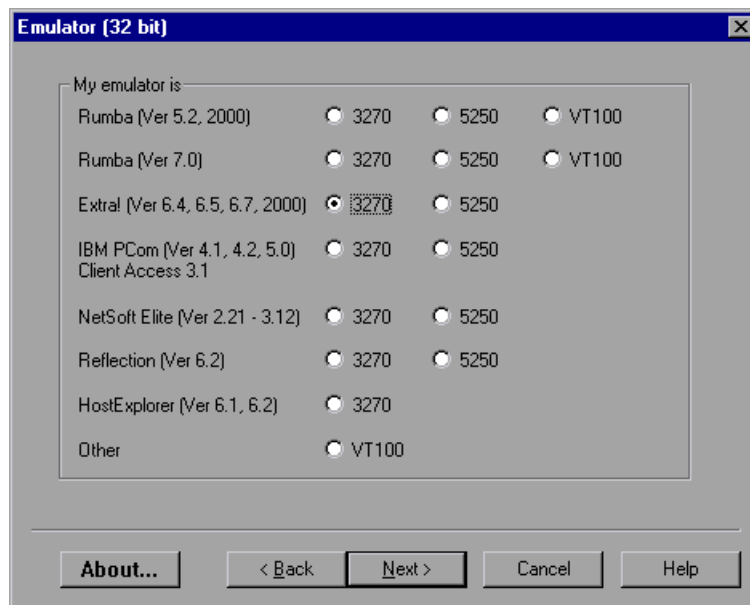
- 7 Define the date format (US or European) and the date conversion mode used by the application you want to test:
 - Windowing (the converted date year field remains two digits in length)
 - Field Expansion (the converted date year field is expanded to four digits)



Click **Next**.

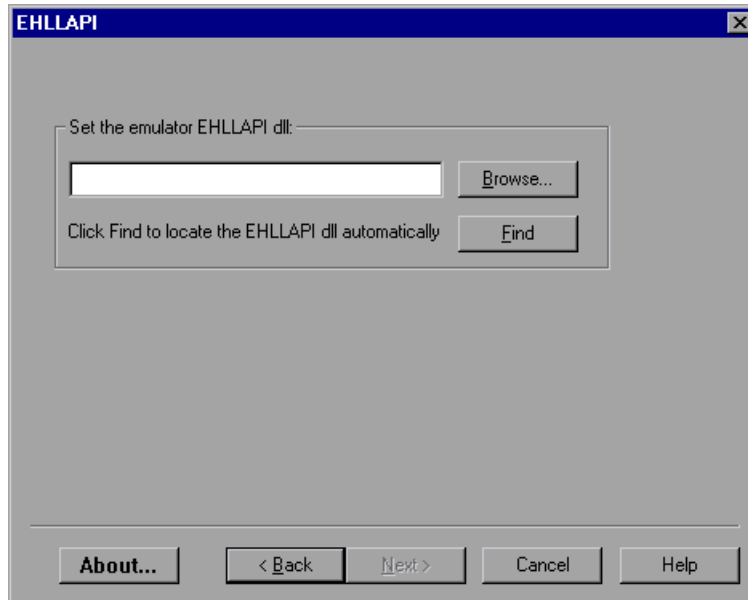
- 8 Select your terminal emulator type. If the current version of your terminal emulator is not displayed, select **Other VT100**.

Note: The Terminal Emulator Add-in for WinRunner 7.01 does not support testing on 16-bit terminal emulators.



Click **Next**.

- 9 Set the emulator EHLLAPI DLL, using the **Find** or the **Browse** button.

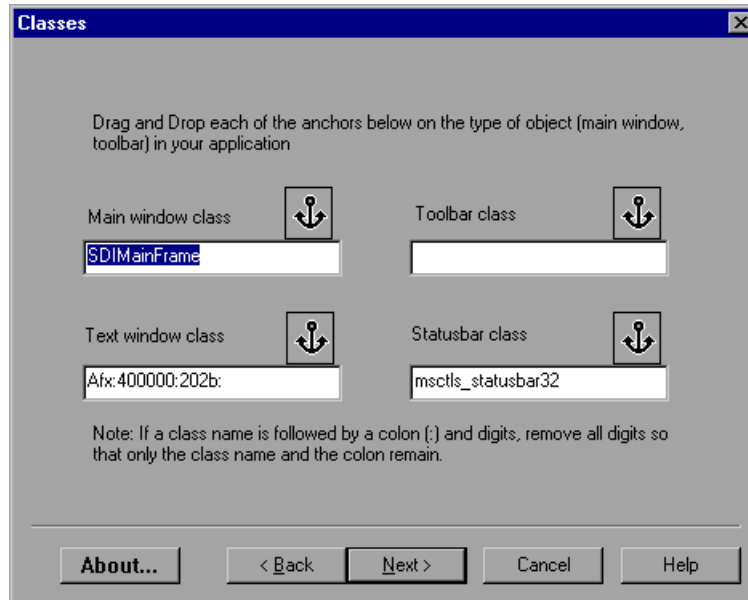


The table below lists the file names used by terminal emulators for the EHLLAPI DLL.

Emulator	32-Bit EHLLAPI DLL
Rumba	ehlapi32.dll
Extra, Irma	ehlapi32.dll
IBM Personal Communications	pcshll32.dll
NetSoft Dynacomm/Elite	whllapi.dll
Reflection	hllapi32.dll
HostExplorer	ehllap32.dll

Click **Next**.

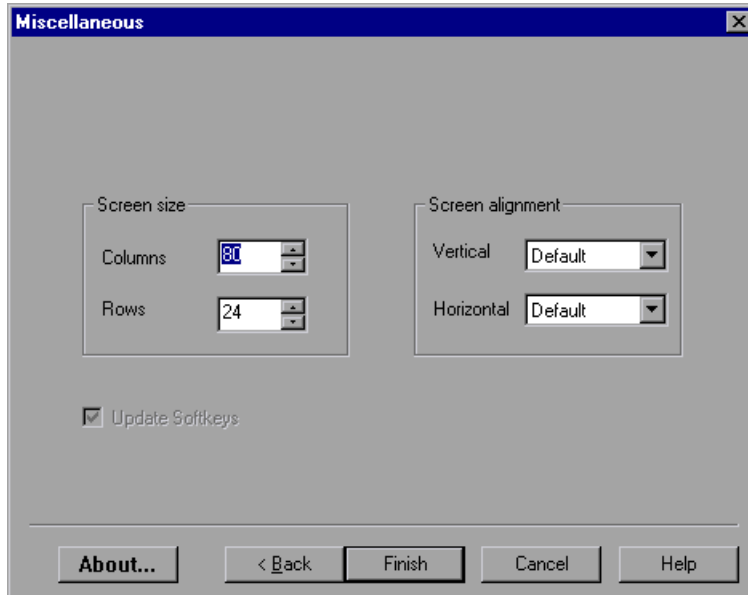
- 10** If you selected **Other VT100** as your terminal emulator type, enter the classes, as described in the table below. To enter a class, either type it in a text box or click an anchor button, drag the anchor to a window or a toolbar, and release the mouse.



Class	Description
Main window class	The class of the terminal emulator's main window (you must set a value for this option)
Text window class	The class of the terminal emulator's text window class (client area). (This is the area where text is displayed and can be the same as the main window.)
Toolbar class	The class of the terminal emulator's toolbar
Statusbar class	The class of the terminal emulator's statusbar

Click **Next**.

- 11 Define the screen alignment of the terminal emulator. If you selected **Other VT100** as your terminal emulator type, define also the screen size.



Note: The screen size for some emulators is constant (24X80) and cannot be changed during installation. The size of the screen for these emulators is changed by opening the *wrun.ini* file and changing the value of the columns and rows manually.

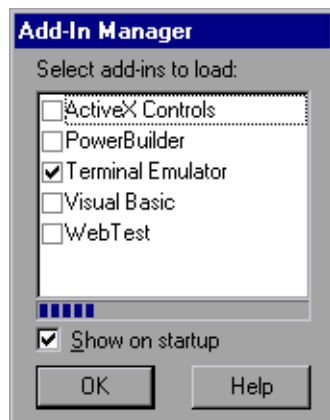
Click **Finish**. The installation process is complete.

- 12 The Setup Complete screen prompts you to restart Windows or your computer. You can choose to restart your computer at a later time, but you must restart your computer before you use WinRunner with the Terminal Emulator Add-in. Click **Finish**.
- To read what's new for Terminal Emulator Support and any last minute information, select **Start > Programs > WinRunner > Terminal Emulator Add-in > Terminal Emulator Add-in Read Me**.

- The date operations support for terminal emulator applications includes a demo application. To use the demo application, select **Start > Programs > WinRunner > Sample Applications > Date Operations Demo Server**. To read about the demo application, select **Start > Programs > WinRunner > Sample Applications > Date Operations Demo Server Read Me**.



- To start WinRunner with Terminal Emulator support, select **Start > Programs > WinRunner > WinRunner**. The Add-in Manager dialog box opens.



Select **Terminal Emulator**, and click **OK**.

After installing the Terminal Emulator Add-in support, you may need to connect your terminal emulator to WinRunner. For the following terminal emulators, see “Connecting a Terminal Emulator to WinRunner” on page 14.

- Rumba 5.1 (or higher)
- Extra! 6.3 (or higher)
- NetSoft Elite 2.2x (or higher)
- Reflection 6.2

Connecting a Terminal Emulator to WinRunner

Note: Before using WinRunner with the Terminal Emulator Add-in for the first time, you must connect the terminal emulator to WinRunner.

After you run the WinRunner 7.01 Terminal Emulator Add-in setup program, you must connect your 32-bit Rumba 5.2/6.0, Extra! 6.4/6.5, NetSoft Elite 2.21-3.12 or Reflection 6.2 terminal emulator to WinRunner.

Note: The Terminal Emulator Add-in for WinRunner 7.01 does not support testing on 16-bit terminal emulators.

Rumba 5.1 or Higher

To connect your Rumba 5.1 (or higher) terminal emulator to WinRunner:

- 1** Load Rumba 5.1 (or higher).
- 2** Choose **Options > API**. The API Options dialog box opens.
- 3** Click the **Identification** tab.
- 4** In the Short Name field, type the uppercase letter A for the first session. For subsequent sessions, use consecutive uppercase letters in the alphabet.
- 5** Click **OK**.
- 6** Save the profile when you exit Rumba.

Extra 6.3 or Higher

To connect your Extra 6.3 (or higher) terminal emulator to WinRunner:

- 1 Load Extra 6.3 (or higher).
- 2 Choose **Options > Global Preferences**. The Global Preferences dialog box opens.
- 3 Click the **Advanced** tab.
- 4 Choose a **Short Name** and click **Browse** to select a previously saved session profile.
- 5 Click **Open**. Click **OK**.
- 6 Save the profile when you exit Extra.

NetSoft Elite 2.2x or Higher

To connect your NetSoft Elite 2.2x (or higher) terminal emulator to WinRunner:

- 1 Load NS/Administrator.
- 2 Select Mainframe Workspace for 3270 or Midrange Workspace for AS400/5250.
- 3 Right-click the appropriate display icon and choose **Properties** on the menu.
- 4 In the Short Name field, type any uppercase letter from A to Z.
- 5 Click **OK**.
- 6 Exit NS/Administrator.
- 7 Load the NetSoft Display session.
- 8 In the View menu, select **Auto Font Size** and **Auto Window Size**.
- 9 Choose **Tools > Keyboard** to remap the default keys for New Line (Ctrl Right) and Reset (Ctrl Left). These keys conflict with WinRunner softkeys.

Reflection 6.2

To connect your Reflection 6.2 terminal emulator to WinRunner:

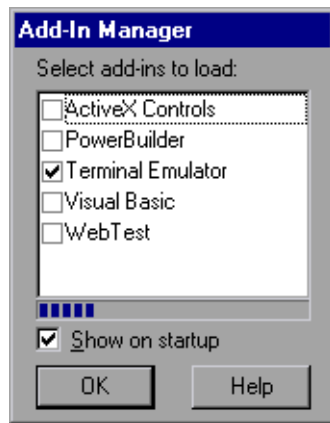
- 1** Load Host-Mainframe or AS400.
- 2** Choose **Setup > Terminal**.
- 3** In the Short Name field, type any uppercase letter from A to Z.
- 4** Click **OK**.

Disabling Terminal Emulator Support

If you decide to use WinRunner without Terminal Emulator support, you can disable the Terminal Emulator Add-in.

To disable Terminal Emulator Add-in support:

- 1** Select **Start > Programs > WinRunner > WinRunner** to open WinRunner.
- 2** After the opening screen appears, the Add-In Manager dialog box opens for ten seconds. (If the Add-In Manager dialog box does not open, see the following note.)



- 3** Clear the **Terminal Emulator** check box.
- 4** Click **OK**. WinRunner opens with the add-in support disabled.

Note:

If the Add-In Manager dialog box does not open:

- 1** Start WinRunner.
 - 2** In **Settings > Options > Environment tab**, check **Show Add-in Manager dialog for ___ seconds** and fill in a comfortable amount of time in seconds. (The default value is 10 seconds.)
 - 3** Click **OK**.
 - 4** Close WinRunner. A WinRunner Message dialog opens asking “Would you like to save changes made in the configuration?” Click **Yes**.
 - 5** Open WinRunner again and proceed from Step 2 in “To disable the add-in support,” above.
-



MERCURY INTERACTIVE

Mercury Interactive Corporation

1325 Borregas Avenue
Sunnyvale, CA 94089 USA

Main Telephone: (408) 822-5200

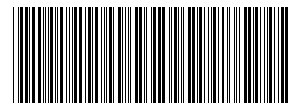
Sales & Information: (800) TEST-911

Customer Support: (877) TEST-HLP

Fax: (408) 822-5300

Home Page: www.mercuryinteractive.com

Customer Support: support.mercuryinteractive.com



* W R T E I G 7 . 0 1 / 0 1 *