

Astra® QuickTest™
Installation Guide
Version 5.6



MERCURY INTERACTIVE

Astra QuickTest Installation Guide, Version 5.6

© Copyright 1994 - 2002 by Mercury Interactive Corporation

All rights reserved. All text and figures included in this publication are the exclusive property of Mercury Interactive Corporation or its licensors, and may not be copied, reproduced, or used in any way without the express permission in writing of Mercury Interactive. Information in this document is subject to change without notice and does not represent a commitment on the part of Mercury Interactive.

Mercury Interactive may have patents or pending patent applications covering subject matter in this document. The furnishing of this document does not give you any license to these patents except as expressly provided in any written license agreement from Mercury Interactive.

Mercury Interactive and Design, M and Design, WinRunner, XRunner, LoadRunner, TestDirector, TestSuite, WebTest, Astra, Astra SiteManager, Astra SiteTest, SiteRunner, FreshWater Software, SiteScope, and SiteSeer are registered trademarks of Mercury Interactive Corporation in the United States and/or other countries. Astra QuickTest, Astra LoadTest, Astra FastTrack, RapidTest, QuickTest, Visual Testing, Action Tracker, Link Doctor, Change Viewer, Dynamic Scan, Fast Scan, Visual Web Display, ActiveTest, ActiveTest SecureCheck, ActiveWatch, POPs on Demand, Topaz, Topaz ActiveAgent, Topaz Observer, Topaz Prism, Topaz Delta, Topaz Rent-a-POP, Topaz Open DataSource, Topaz AIMS, Topaz Console, Topaz Diagnostics, Topaz WeatherMap, Twinlook, TurboLoad, LoadRunner TestCenter, SiteReliance and Global SiteReliance are trademarks of Mercury Interactive Corporation in the United States and/or other countries.

This document may also contain registered trademarks, trademarks, service marks and/or trade names that are owned by their respective companies or organizations. Mercury Interactive Corporation disclaims any responsibility for specifying which marks are owned by which companies or organizations.

If you have any comments or suggestions regarding this document, please send them via e-mail to documentation@merc-int.com.

Mercury Interactive Corporation
1325 Borregas Avenue
Sunnyvale, CA 94089 USA

Table of Contents

Before You Install1
Registering Your Copy of Astra QuickTest1
System Requirements2
Installing Astra QuickTest.....3
Upgrading your License14
Understanding Your License14
Modifying License Information14
Uninstalling Astra QuickTest17

Before You Install

Welcome to Astra QuickTest, Mercury Interactive's functional testing tool for Web applications. This guide describes everything you need to know to install Astra QuickTest on a standalone computer.

Before you install Astra QuickTest, please review the following installation procedures:

- Registering Your Copy of Astra QuickTest
- System Requirements

Note: If another version of Astra QuickTest is installed on your computer, you must uninstall it before installing Astra QuickTest 5.6.

Registering Your Copy of Astra QuickTest

Register your copy of Astra QuickTest to become a licensed user with all rights and privileges. Registered users can access technical support and information on all Mercury Interactive products, and are eligible for updates and upgrades.

Note: You can register your copy of Astra QuickTest on Mercury Interactive's Customer Support site (<http://support.mercuryinteractive.com>).

If your address changes, notify Mercury Interactive or your local representative, so that you can continue to receive product information and updates.

System Requirements

To successfully run Astra QuickTest, you need the following minimum system requirements:

Computer/Processor	An IBM-PC or compatible with a single Pentium® II 266 MHz (minimum) or higher (366 MHz recommended) microprocessor.
Operating System	Windows® 95, Windows® 98, Windows® 2000, Windows NT® 4.0, Windows® Me, or Windows® XP.
Memory	A minimum of 64 MB of RAM (128 MB recommended).
Free Hard Disk Space	160 MB of free disk space. You may need an additional 2 to 15 MB on the drive where Windows is installed, depending on the shared components already installed on the machine. (An additional 4 MB of free disk space is required during the installation process.)
Browser	Microsoft Internet Explorer 5.0 to 6.0 (required), Netscape Navigator 4.06 and higher (optional), Netscape 6.1 (optional), AOL 5.0 and 6.0 (optional).

Installing Astra QuickTest

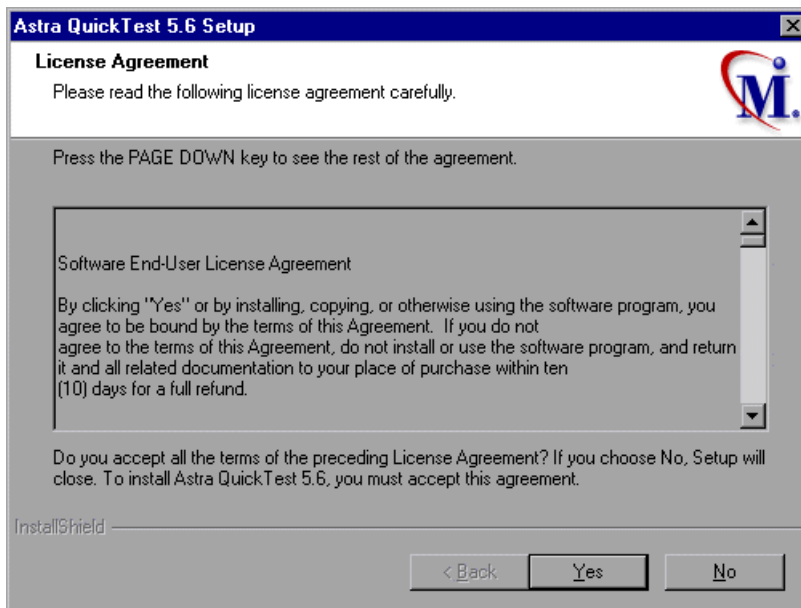
Your Astra QuickTest CD-ROM includes a setup program that guides you through the installation process.

To install Astra QuickTest on your computer:

- 1 Insert the CD-ROM into the CD-ROM drive. If the CD-ROM drive is on your local machine, the Astra QuickTest Setup window opens. If you are installing from a network drive, connect and browse to it. Double-click *autorun.exe* in the root folder of the CD-ROM.

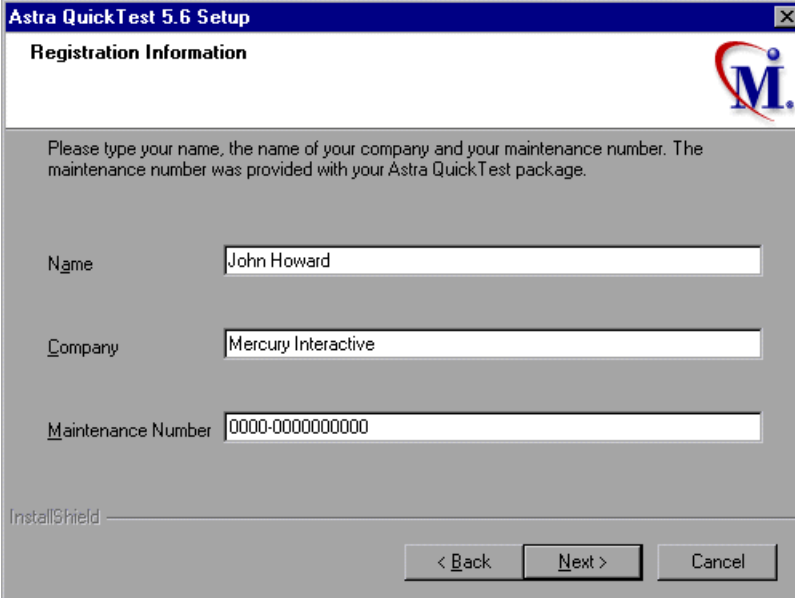


- If you want to open the Product information site (<http://astratryandbuy.mercuryinteractive.com/cgi-bin/portal/trynbuy/index.jsp>), click **Product information**.
 - If you want to view the ReadMe file, click **Release notes**.
 - If you want to open the contact information page on Mercury Interactive's Web site (http://www.mercuryinteractive.com/contact_us), click **Contact Mercury Interactive**.
 - If you want to open Mercury Interactive's Customer Support Web site (<http://support.mercuryinteractive.com>), click **Support**.
 - If you want to view the contents of the Astra QuickTest CD-ROM, click **Browse CD**.
 - If you want to exit the Astra QuickTest Setup window, click **Exit**.
- 2 Click **Install Astra QuickTest** to start the Astra QuickTest setup program.
 - 3 The Astra QuickTest setup program starts, and the License Agreement screen opens. Read the agreement.



To install Astra QuickTest, you must accept the terms of the license agreement by clicking **Yes**. If you click **No**, the setup program will close.

- 4** In the Registration Information screen, type your name, the name of your company, and the Astra QuickTest maintenance number you received in your Astra QuickTest package and/or by e-mail from Mercury Interactive Customer Support.

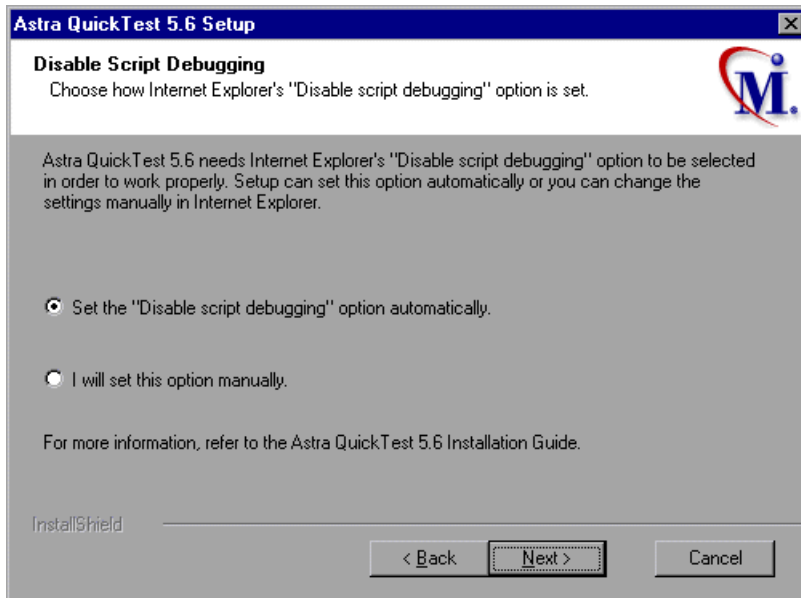


The screenshot shows a Windows-style dialog box titled "Astra QuickTest 5.6 Setup". The main heading is "Registration Information". Below the heading is a Mercury Interactive logo. A text block instructs the user: "Please type your name, the name of your company and your maintenance number. The maintenance number was provided with your Astra QuickTest package." There are three text input fields: "Name" with the value "John Howard", "Company" with the value "Mercury Interactive", and "Maintenance Number" with the value "0000-0000000000". At the bottom left is the "InstallShield" logo. At the bottom right are three buttons: "< Back", "Next >", and "Cancel".

Click **Next** to proceed.

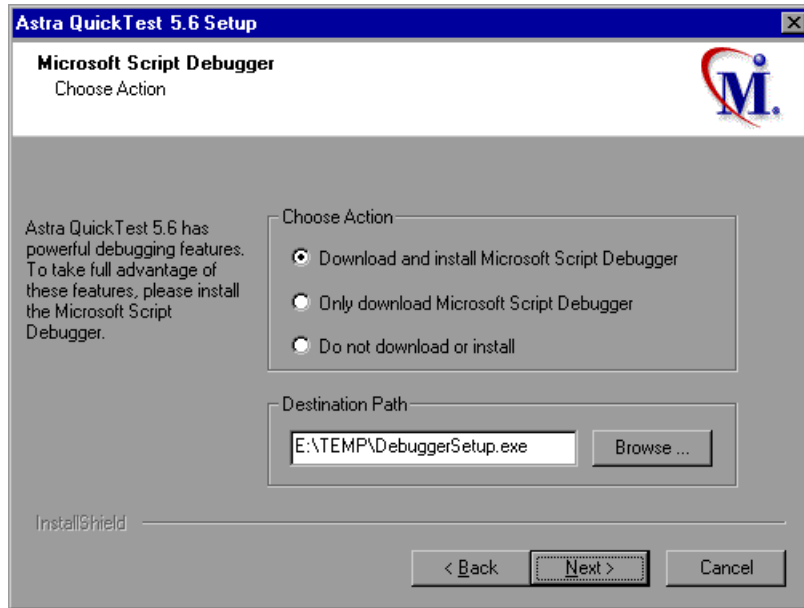
- 5** Click **Yes** to confirm the registration information.
- 6** Astra QuickTest uses the Microsoft Script Debugger application during test runs. Internet Explorer's script debugging capabilities must therefore be turned off to prevent conflicts between the applications.

In the Disable Script Debugging screen, select whether you want the setup program to set Internet Explorer's Disable script debugging option, or whether you want to set this option manually.



If you choose not to set this setting during setup, you should enable the settings manually in your Microsoft Internet Explorer browser before running Astra QuickTest. Click **Next** to proceed.

- 7 If the Microsoft Script Debugger is not installed on your machine, the Microsoft Script Debugger screen opens. You can specify whether or not to download and install the Microsoft Script Debugger to utilize Astra QuickTest's debugging features.

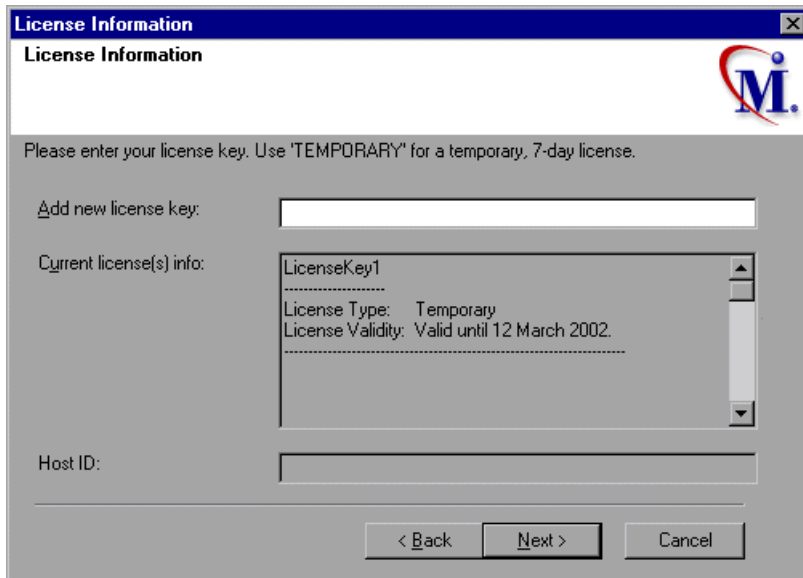


Choose an option. By default, the option to download and install Microsoft Script Debugger is selected.

To select a different location, click **Browse**, choose a folder, and click **OK**.

Click **Next** to proceed.

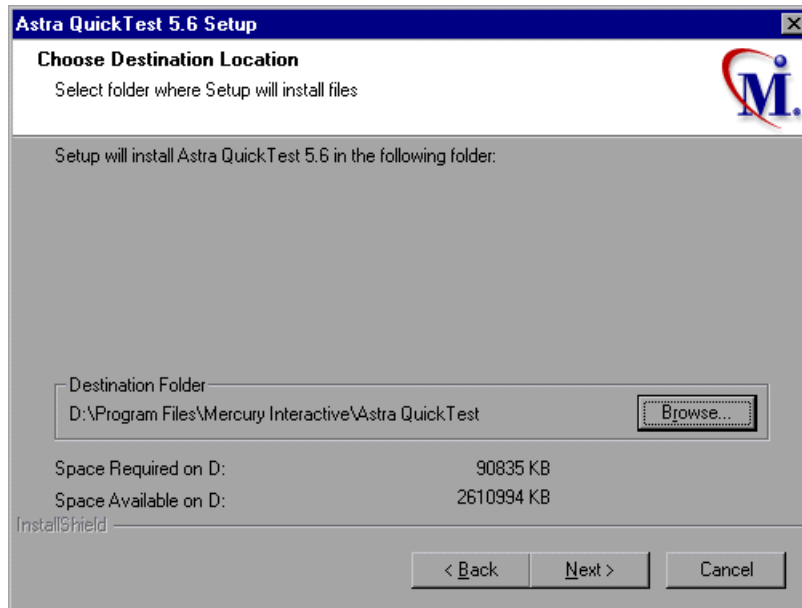
- 8** In the Astra QuickTest License screen, type the license number you received in your Astra QuickTest package or by e-mail from Mercury Interactive Customer Support.



The screenshot shows a Windows-style dialog box titled "License Information" with a close button (X) in the top right corner. The dialog has a blue header bar with the title. Below the header, the text "License Information" is displayed. To the right of this text is the Mercury Interactive logo, which consists of a stylized "M" with a red swoosh and a blue dot. Below the header, there is a message: "Please enter your license key. Use 'TEMPORARY' for a temporary, 7-day license." The dialog contains three main input areas: 1. "Add new license key:" followed by a single-line text input field. 2. "Current license(s) info:" followed by a multi-line text area. This area contains the following text: "LicenseKey1", ".....", "License Type: Temporary", "License Validity: Valid until 12 March 2002.", and ".....". 3. "Host ID:" followed by a single-line text input field. At the bottom of the dialog, there are three buttons: "< Back", "Next >", and "Cancel".

Click **Next** to proceed.

- 9 In the Choose Destination Location screen, choose the location where you want to install Astra QuickTest.

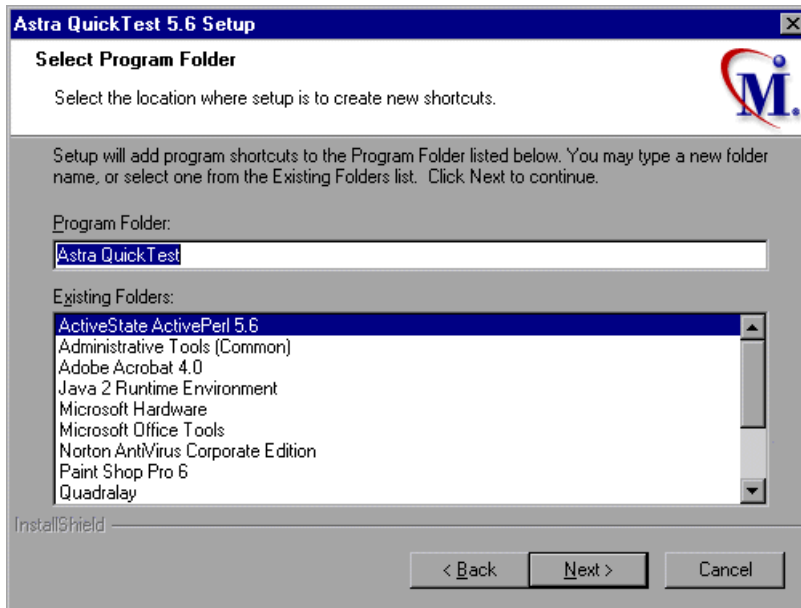


To select a different location, click **Browse**, choose a folder, and then click **OK**.

Ensure that you install Astra QuickTest to a drive with a sufficient amount of free disk space. For more information, see “System Requirements”, on page 2.

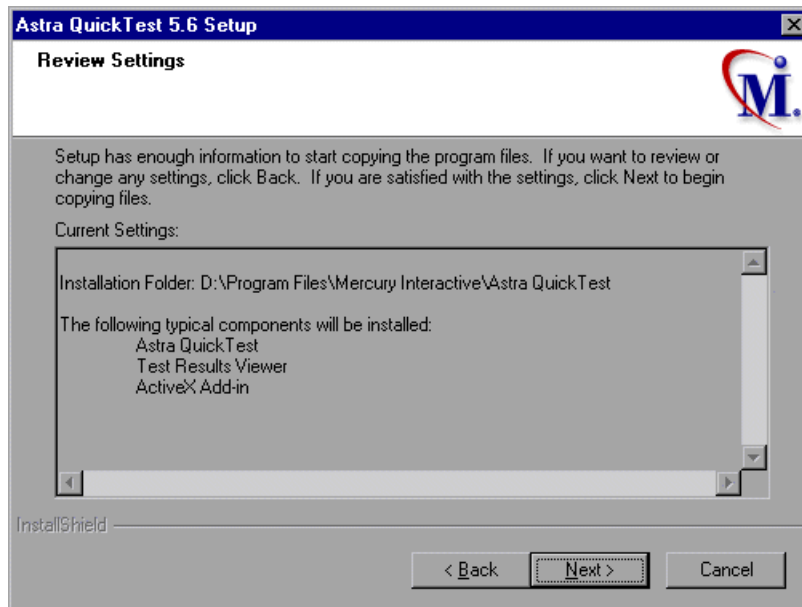
Click **Next** to proceed.

- 10 In the Select Program Folder screen, specify a program folder for the Astra QuickTest shortcuts, or accept the default folder, Astra QuickTest.



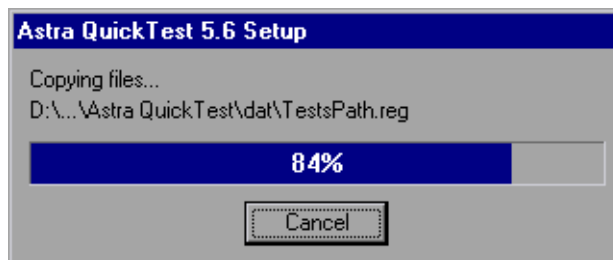
Click **Next** to proceed.

- 11** In the Review Settings screen, review the settings you selected.

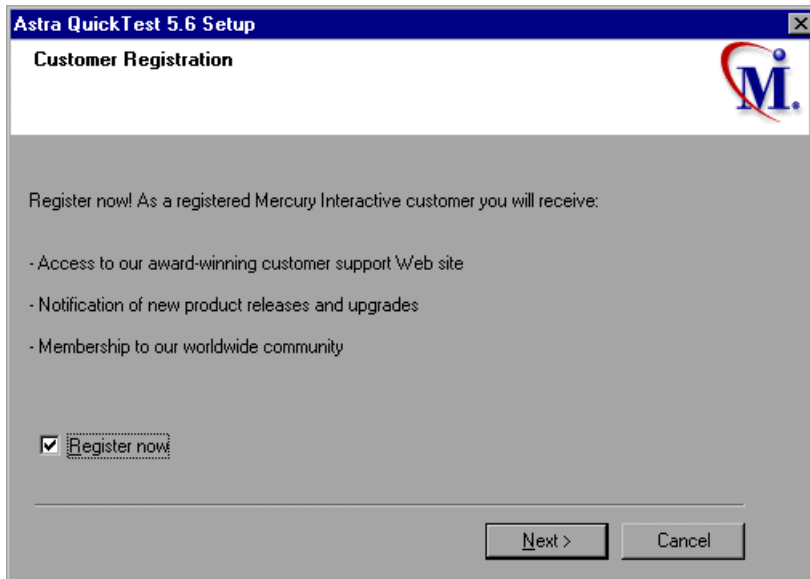


To change your settings, click **Back**. To confirm the settings, click **Next**.

The installation process begins.



- 12** In the Registration Information screen, you can choose to register your copy of Astra QuickTest online.

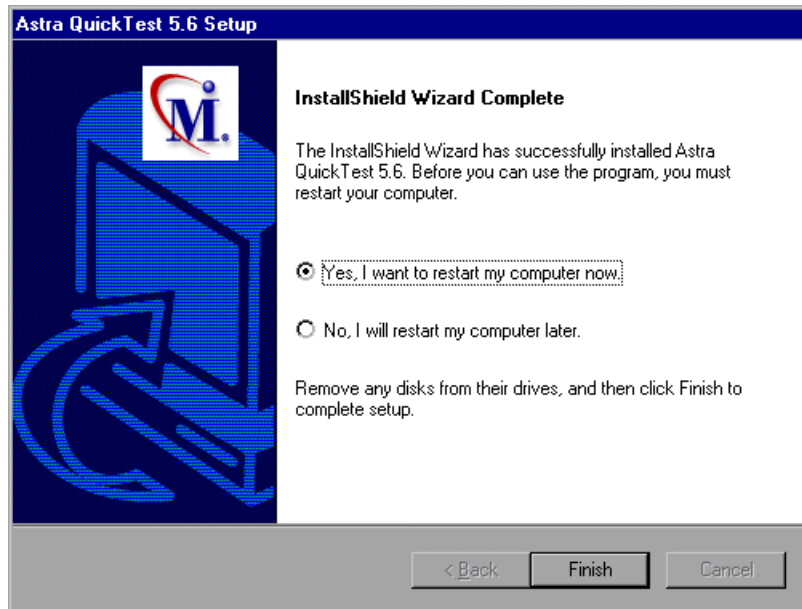


If you register, you receive:

- access to Mercury Interactive's award-winning Customer Support Web site
- notification of new product releases and upgrades
- membership to Mercury Interactive's worldwide community of testers

To register now, confirm that the **Register now** check box is selected. Click **Next**. If you chose to register online, your browser opens to Mercury Interactive's Customer Support site (<http://support.mercuryinteractive.com>).

- 13** The InstallShield Wizard Complete screen prompts you to restart your computer. You can choose to restart your computer at a later time, but you must restart your computer before you use Astra QuickTest.



Note: If you try to start Astra QuickTest before restarting your computer, Astra QuickTest may not run properly and other system-related problems may occur.

Click **Finish** to complete the setup process.

Note: The ReadMe file opens after you restart your computer. It contains the latest technical and troubleshooting information. To open the Readme file at another time, click **Programs > Astra QuickTest > Read Me** from the **Start** menu.

Upgrading your License

After you install Astra QuickTest, you can modify your license at any time to allow you to work with specific add-ins and/or to remove a time limitation. You can upgrade your license by selecting the About Astra QuickTest option from the Help menu.

Understanding Your License

Your license key contains information on two central elements: expiration type and supported add-ins.

There are three license expiration types:

- **Permanent:** does not have an expiration date
- **Time-Limited:** has a pre-defined expiration date that is set during license key generation
- **Temporary:** includes all Astra QuickTest components, and is valid for one week

Modifying License Information

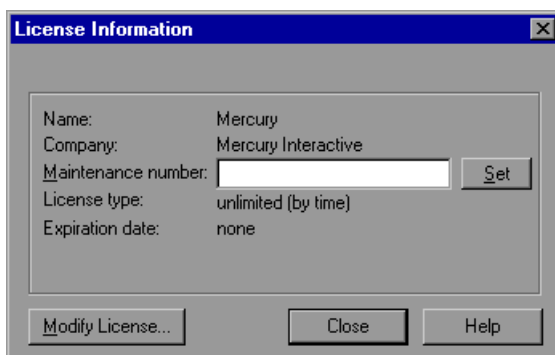
Once you install Astra QuickTest, you can modify your license at any time to enable specific add-ins and/or to modify or remove a time limitation. You can request a new license on Mercury Interactive's Customer Support Web site. The URL for the License Request Web site is *<http://support.mercuryinteractive.com/cgi-bin/portal/CSO/licRequest.jsp>*.

Note: This Web address is case sensitive.

When you receive a new license key, you modify your license from the License Information dialog box.

To modify the license information:

- 1** Open Astra QuickTest.
- 2** Click **Help > About Astra QuickTest**. The About Astra QuickTest dialog box opens.
- 3** Click **License**. The License Information dialog box opens.



- To change your maintenance number, type it in the text box, and click **Set**.
- To modify your license number, click **Modify License**. The New License dialog box opens. Enter your new license number in the text box, and click **OK**.

Note: Astra QuickTest has several license types. For more information about licenses, see “Understanding Your License”, on page 14.

- 4** Click **Close** to close the License Information dialog box.
 - 5** Click **Close** to close the About Astra QuickTest dialog box.
- The license modification is complete.

Uninstalling Astra QuickTest

Your Astra QuickTest installation includes an uninstall program that uninstalls Astra QuickTest software and files from your computer and removes Astra QuickTest shortcuts from your Start menu.

To uninstall Astra QuickTest:

- 1** Choose **Programs > Astra QuickTest > Uninstall Astra QuickTest** from the **Start** menu.
- 2** A message prompts you to confirm your decision to uninstall Astra QuickTest. Click **Yes** to uninstall Astra QuickTest. Otherwise, click **No** to keep Astra QuickTest installed on your computer.
The Uninstall Shield window opens.
- 3** You may be prompted to remove shared files that are not being used by any program. If you are not sure what to do, click **No to All**.
The Uninstall Shield removes Astra QuickTest from your computer.
- 4** When the uninstall process is complete, the OK button is enabled. Click **OK**.
- 5** To complete the uninstall process, click **OK** to restart your computer.

Note: Uninstalling Astra QuickTest does not uninstall the Microsoft Script Debugger. You can uninstall Microsoft Script Debugger from the **Add/Remove Programs** dialog box in the **Control Panel**.



MERCURY INTERACTIVE

Mercury Interactive Corporation

1325 Borregas Avenue
Sunnyvale, CA 94089 USA

Main Telephone: (408) 822-5200

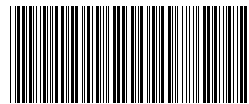
Sales & Information: (800) TEST-911

Customer Support: (877) TEST-HLP

Fax: (408) 822-5300

Home Page: www.mercuryinteractive.com

Customer Support: support.mercuryinteractive.com



* A Q T I G S . 6 / 0 1 *