

Astra[®] QuickTest[™]
Installation Guide
Version 5.5



MERCURY INTERACTIVE

Astra QuickTest Installation Guide, Version 5.5

© Copyright 1994 - 2001 by Mercury Interactive Corporation

All rights reserved. All text and figures included in this publication are the exclusive property of Mercury Interactive Corporation or its licensors, and may not be copied, reproduced, or used in any way without the express permission in writing of Mercury Interactive. Information in this document is subject to change without notice and does not represent a commitment on the part of Mercury Interactive.

Mercury Interactive may have patents or pending patent applications covering subject matter in this document. The furnishing of this document does not give you any license to these patents except as expressly provided in any written license agreement from Mercury Interactive.

Mercury Interactive and Design, M and Design, WinRunner, XRunner, LoadRunner, TestDirector, TestSuite, WebTest, Astra, Astra SiteManager, Astra SiteTest, SiteRunner, FreshWater Software, SiteScope, and SiteSeer are registered trademarks of Mercury Interactive Corporation in the United States and/or other countries. Astra QuickTest, Astra LoadTest, Astra FastTrack, RapidTest, QuickTest, Visual Testing, Action Tracker, Link Doctor, Change Viewer, Dynamic Scan, Fast Scan, Visual Web Display, ActiveTest, ActiveTest SecureCheck, ActiveWatch, POPs on Demand, Topaz, Topaz ActiveAgent, Topaz Observer, Topaz Prism, Topaz Delta, Topaz Rent-a-POP, Topaz Open DataSource, Topaz AIMS, Topaz Console, Topaz Diagnostics, Topaz WeatherMap, Twinlook, TurboLoad, LoadRunner TestCenter, SiteReliance and Global SiteReliance are trademarks of Mercury Interactive Corporation in the United States and/or other countries.

This document may also contain registered trademarks, trademarks, service marks and/or trade names that are owned by their respective companies or organizations. Mercury Interactive Corporation disclaims any responsibility for specifying which marks are owned by which companies or organizations.

If you have any comments or suggestions regarding this document, please send them via e-mail to documentation@merc-int.com.

Mercury Interactive Corporation
1325 Borregas Avenue
Sunnyvale, CA 94089 USA

AQTIG5.5/01

Table of Contents

Before You Install	1
Registering Your Copy of Astra QuickTest	1
System Requirements	2
Installing Astra QuickTest.....	3
Modifying License Information.....	15
Uninstalling Astra QuickTest	17

Astra QuickTest Installation Guide

Before You Install

Welcome to Astra QuickTest, Mercury Interactive's functional testing tool for Web applications using Windows 95, Windows 98, Windows 2000, Windows NT 4.0, and Windows Me. This guide describes everything you need to know about how to install Astra QuickTest on a standalone computer.

Note: If another version of Astra QuickTest is installed on your computer, you must uninstall it before installing Astra QuickTest 5.5.

Registering Your Copy of Astra QuickTest

Register your copy of Astra QuickTest to become a licensed user with all rights and privileges. Registered users can access technical support and information on all Mercury Interactive products, and are eligible for updates and upgrades.

Note: You can register your copy of Astra QuickTest on Mercury Interactive's Customer Support site (<http://support.mercuryinteractive.com>).

If your address changes, notify Mercury Interactive or your local representative, so that you can continue to receive product information and updates.

System Requirements

In order to successfully run Astra QuickTest, you need the following minimum system requirements:

Computer/Processor	An IBM-PC or compatible with a single Pentium® II 266 MHz (minimum) or higher (366 MHz recommended) microprocessor.
Operating System	Windows® 95, Windows® 98, Windows® 2000, Windows NT® 4.0, or Windows® Me.
Memory	A minimum of 32 MB of RAM memory (64 MB recommended).
Free Hard Disk Space	160 MB of free disk space. You may need an additional 2 to 15 MB on the drive where Windows is installed, depending on the shared components already installed on the machine. (An additional 4 MB of free disk space is required during the installation process.)
Browser	Internet Explorer 4.01 SP1 to 5.5 (required), Netscape Navigator 4.06 and higher (optional), Netscape 6.0 and 6.01 (optional), AOL 5.0 and 6.0 (optional).

Installing Astra QuickTest

Your Astra QuickTest CD-ROM includes a setup program that guides you through the installation process.

To install Astra QuickTest on your computer:

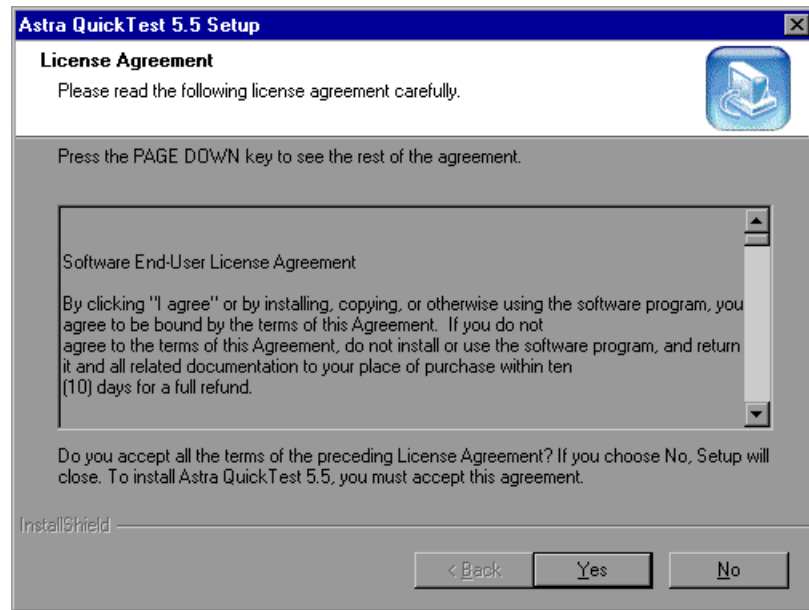
- 1 Insert the CD-ROM into the CD-ROM drive. If the CD-ROM drive is on your local machine, the Astra QuickTest Setup window opens. If you are installing from a network drive, connect and browse to it. Double-click *autorun.exe* in the root folder of the CD-ROM.



Astra QuickTest Installation Guide

- If you want to open the Product information site (<http://astratryandbuy.mercuryinteractive.com/cgi-bin/portal/trynbuy/index.jsp>), click **Product information**.
 - If you want to view the Readme file, click **Release notes**.
 - If you want to open the contact information page on Mercury Interactive's Web site (http://www.mercuryinteractive.com/contact_us), click **Contact Mercury Interactive**.
 - If you want to open Mercury Interactive's Customer Support Web site (<http://support.mercuryinteractive.com>), click **Support**.
 - If you want to view the contents of the Astra QuickTest CD-ROM, click **Browse CD**.
 - If you want to exit the Astra QuickTest Setup window, click **Exit**.
- 2** Click **Install Astra QuickTest** to install Astra QuickTest.

- 3 The Astra QuickTest setup program starts, and the License Agreement screen opens. Read the agreement.



To install Astra QuickTest, you must accept the terms of the license agreement by clicking **Yes**. If you click **No**, the setup program will close.

- 4 In the Registration Information screen, type your name, the name of your company, and the maintenance number you received in your Astra QuickTest package and/or by e-mail from Mercury Interactive Customer Support.

Registration Information

Edit Data
Enter requested data.

Please type your name, the name of your company and your maintenance number. The maintenance number was provided to you with the Astra QuickTest package.

Name: John Howard

Company: Mercury Interactive

Maintenance number: 000-0000000000

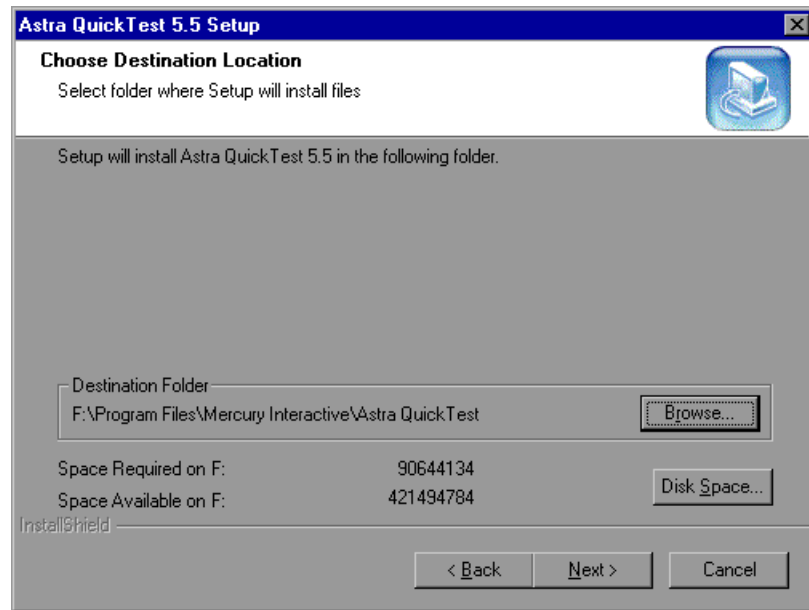
InstallShield

< Back Next > Cancel

Click **Next** to proceed.

- 5 Click **Yes** to confirm the registration information.

- 6 In the Choose Destination Location screen, choose the location where you want to install Astra QuickTest.

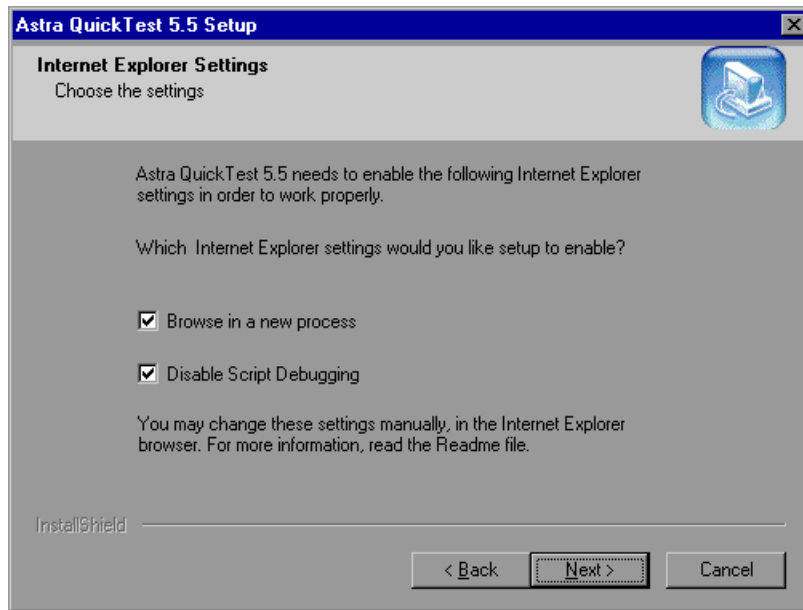


To select a different location, click **Browse**, choose a folder, and then click **OK**.

Ensure that you install Astra QuickTest to a drive with a sufficient amount of free disk space. For more information, see "System Requirements", on page 2.

Click **Next** to proceed.

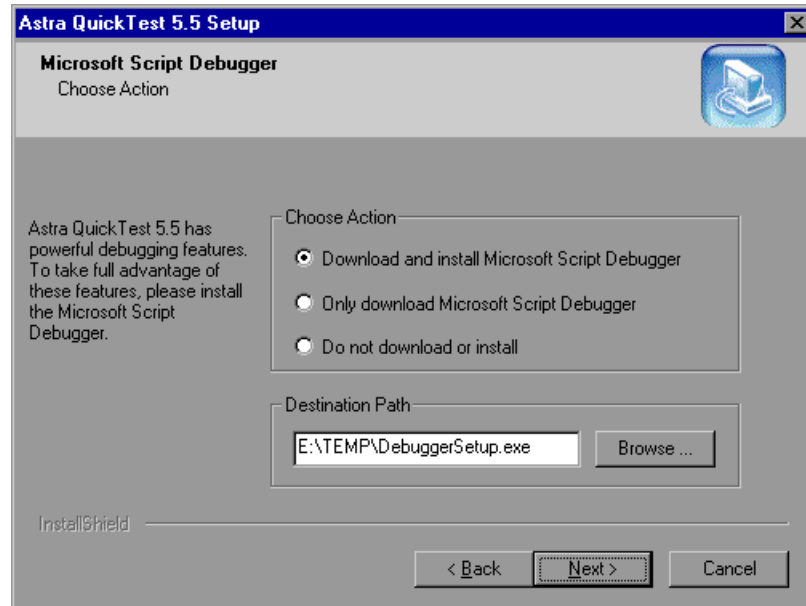
- 7 In the Internet Explorer Settings screen, select the settings that you want Setup to enable for you.



If you choose not to enable these settings during setup, you should enable the settings manually in your Microsoft Internet Explorer browser. Click **Next** to proceed.

Note: In Microsoft Internet Explorer 5.01 and later, the **Browse in a new process** setting is automatically enabled and cannot be changed.

- 8 If the Microsoft Script Debugger is not installed on your machine, the Microsoft Script Debugger screen opens. You can specify whether or not to download and install the Microsoft Script Debugger to utilize Astra QuickTest's debugging features.

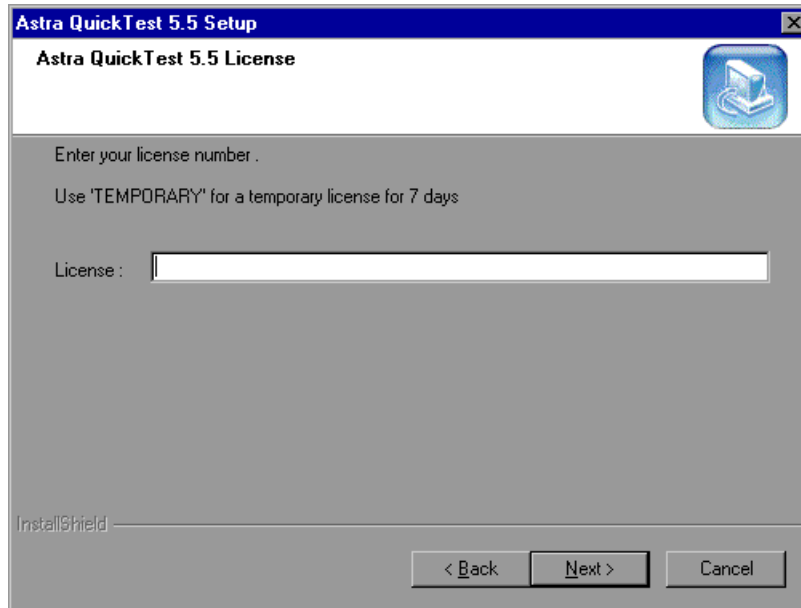


Choose an option. By default, the option to download and install Microsoft Script Debugger is selected.

To select a different location, click **Browse**, choose a folder, and click **OK**.

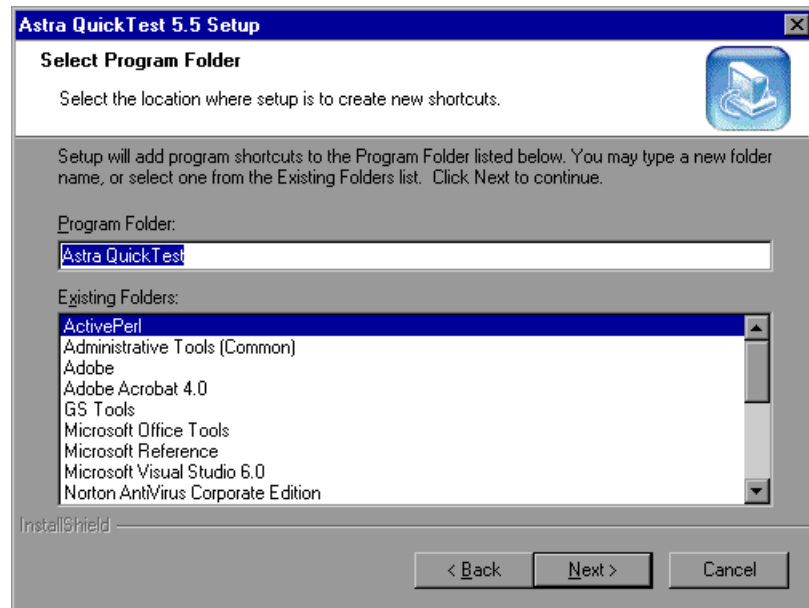
Click **Next** to proceed.

- 9 In the Astra QuickTest License screen, type the licence number you received in your Astra QuickTest package and/or by e-mail from Mercury Interactive Customer Support.



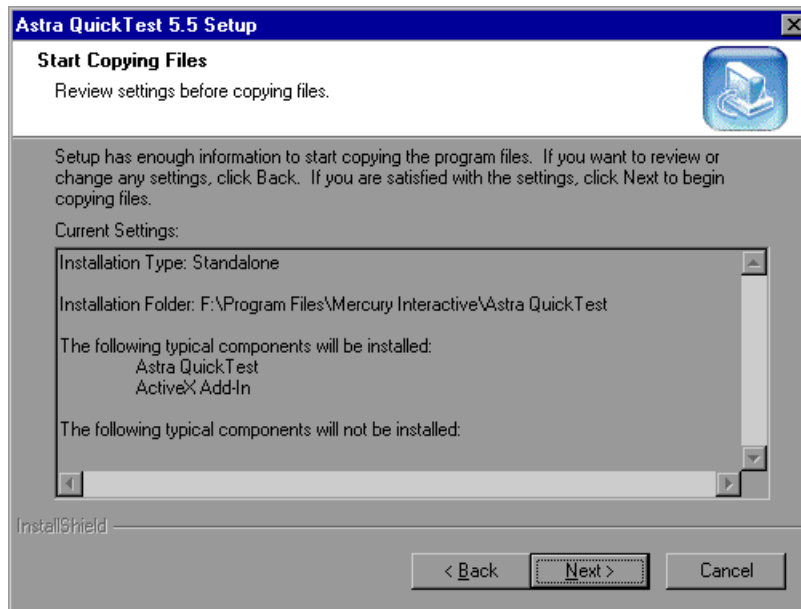
Click **Next** to proceed.

- 10 In the Select Program Folder screen, specify a program folder for the Astra QuickTest icons, or accept the default folder, Astra QuickTest.

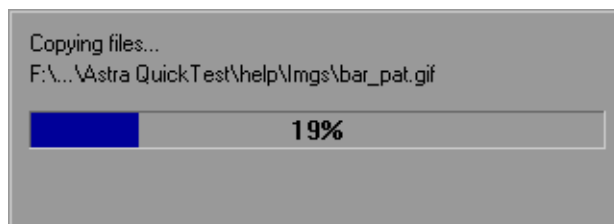


Click **Next** to proceed.

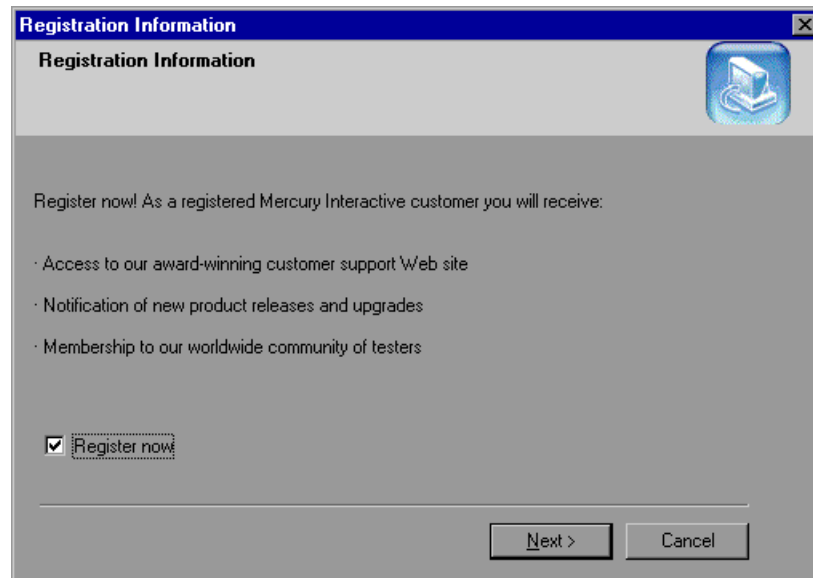
- 11 In the Start Copying Files screen, review the settings you selected.



To change your settings, click **Back**. To confirm the settings, click **Next**. The installation process begins.



- 12** In the Registration Information screen, you can specify whether or not to register your copy of Astra QuickTest online.



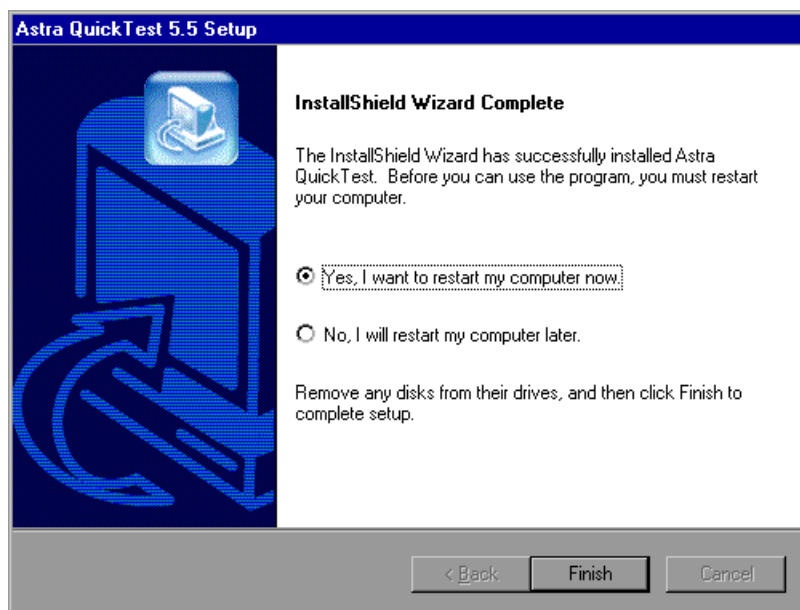
If you register, you receive:

- access to Mercury Interactive's award-winning customer support Web site
- notification of new product releases and upgrades
- membership to Mercury Interactive's worldwide community of testers

To register now, confirm that the **Register now** check box is selected. Click **Next**. If you chose to register online, your browser opens to Mercury Interactive's Customer Support site (<http://support.mercuryinteractive.com>).

- 13** The InstallShield Wizard Complete screen prompts you to restart your computer. You can choose to restart your computer at a later time, but you must restart your computer before you use Astra QuickTest.

Note: If you try to start Astra QuickTest before restarting your computer, Astra QuickTest will not run properly.



Click **Finish** to complete the setup process.

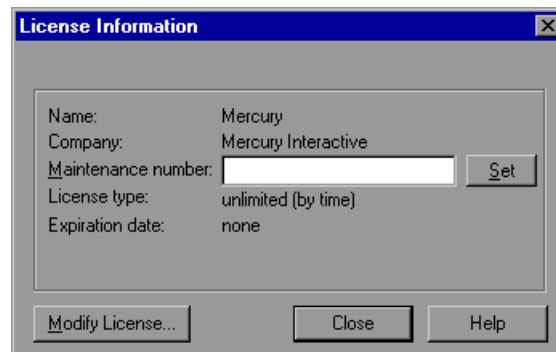
Note: The Readme file opens after you restart your computer. It contains the latest technical and troubleshooting information. To open the Readme file at another time, click **Programs > Astra QuickTest > Read Me** in the **Start** menu.

Modifying License Information

Once you install Astra QuickTest, you can modify your license at any time to enable specific add-ins and/or to add or remove a time limitation. To obtain a new license, contact your local Mercury Interactive Customer Support office. You modify the license by opening the License Information dialog box.

To modify the license information:

- 1** Open Astra QuickTest.
- 2** Click **Help > About Astra QuickTest**. The About Astra QuickTest dialog box opens.
- 3** Click **License**. The License Information dialog box opens.



- To change your maintenance number, type it in the text box, and click **Set**.
- To modify your license number, click **Modify License**.

The New License dialog box opens.

Enter your new license number in the text box, and click **OK**.

- 4** Click **Close** to close the License Information dialog box.
- 5** Click **Close** to close the About Astra QuickTest dialog box.

The license modification is complete.

Note: To load new add-in(s) enabled by a new license, you need to select the add-in(s) in the Add-In Manager the next time you open Astra QuickTest. For more information about loading add-ins, refer to the “QuickTest at a Glance” chapter in the *QuickTest Professional User’s Guide*.

Uninstalling Astra QuickTest

Your Astra QuickTest installation includes an uninstall program that uninstalls Astra QuickTest software and files from your computer and removes Astra QuickTest shortcuts from your Start menu.

To uninstall Astra QuickTest:

- 1** Choose **Programs > Astra QuickTest > Uninstall Astra QuickTest** on the **Start** menu.
- 2** A message prompts you to confirm your decision to uninstall Astra QuickTest. Click **Yes** to uninstall Astra QuickTest. Otherwise, click **No** to keep Astra QuickTest installed on your computer.

The Uninstall Shield window opens.

- 3** You may be prompted to remove shared files that are not being used by any program. If you are not sure what to do, click **No to All**.

The Uninstall Shield removes Astra QuickTest from your computer.

- 4** When the uninstall process is complete, the OK button is enabled. Click **OK**.
- 5** To complete the uninstall process, click **OK** to restart your computer.

Note: Uninstalling Astra QuickTest does not uninstall the Microsoft Script Debugger. You can uninstall Microsoft Script Debugger from the **Add/Remove Programs** dialog box in the **Control Panel**.

Astra QuickTest Installation Guide



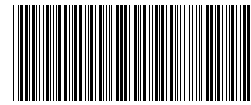
MERCURY INTERACTIVE

Mercury Interactive Corporation

1325 Borregas Avenue
Sunnyvale, CA 94089 USA

Main Telephone: (408) 822-5200
Sales & Information: (800) TEST-911
Customer Support: (877) TEST-HLP
Fax: (408) 822-5300

Home Page: www.mercuryinteractive.com
Customer Support: support.mercuryinteractive.com



AQT1 G5. 5/ 01