

Documentation Roadmap

(July 2006)

Figure 1 on page 2 shows the documentation roadmap for HP OpenView Dashboard. This roadmap presents a suggested order for reading the manuals available with HP OpenView Dashboard:

- 1 Use the *Installation Guide* to install the product.
- 2 Follow the path for the HP OpenView Dashboard component that you are using.

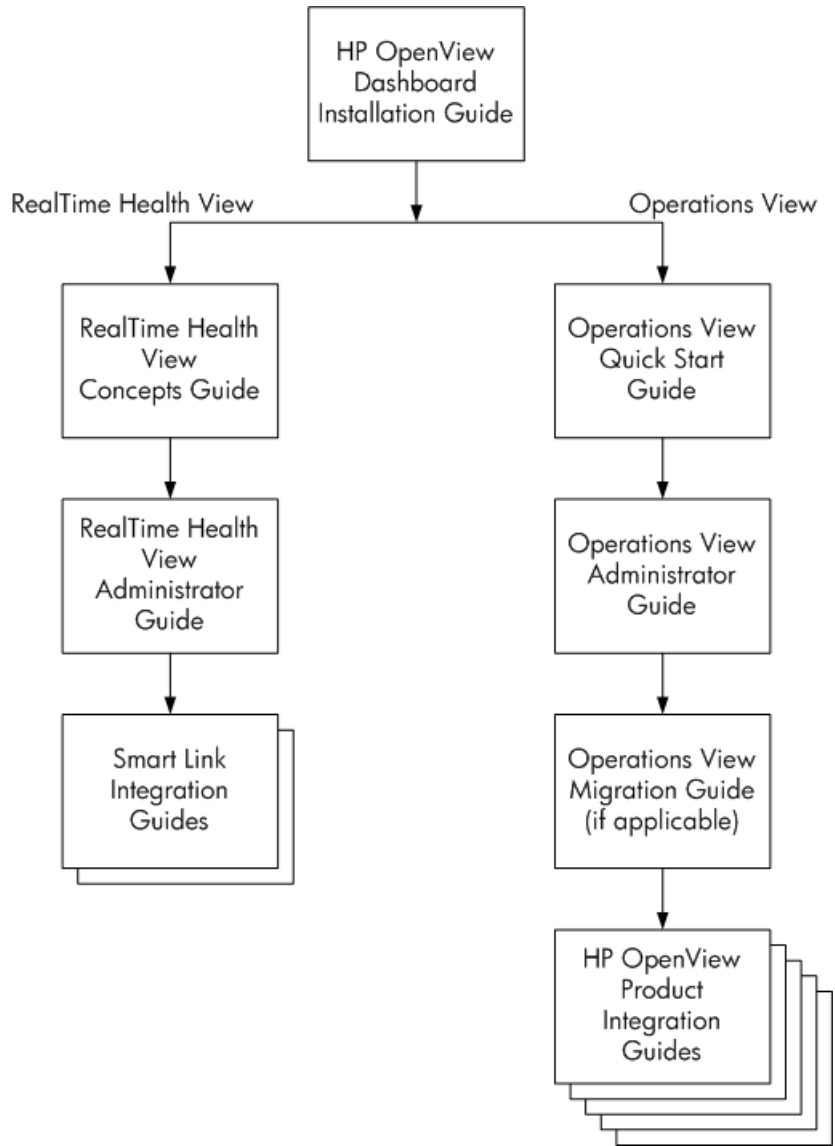
HP OpenView Dashboard RealTime Health View

- a Read the *RealTime Health View Concepts Guide* to understand the concepts of working with dashboards.
- b Use the *RealTime Health View Administrator Guide* to configure and maintain the product.
- c Reference the Smart Link integration guides as needed for specific details on the supported management product integrations.

HP OpenView Dashboard Operations View

- a Use the *Operations View Quick Start Guide* to carry out the tutorial.
- b Read the “Essential Concepts” chapter of the *Operations View Administrator Guide* to understand the concepts of working with portlets and portal servers.
- c Use the *Operations View Administrator Guide* to configure and maintain the product. This guide provides high-level instructions for the common tasks when working with the supplied Operations View portlets
- d If you are migrating from HP OpenView Service Information Portal to Operations View, use the *Operations View Migration Guide* to complete this task. The *Operations View Administrator Guide* refers you to the *Operations View Migration Guide* at the appropriate point in the portal view implementation process.
- e Reference the integration guides as needed for specific details on each supported HP OpenView management product. The *Operations View Administrator Guide* refers you to the integration guides at the appropriate points in the portal view implementation process.

Figure 1 HP OpenView Dashboard Documentation Roadmap



HP OpenView Dashboard Manuals

Table 1 describes the HP OpenView Dashboard manual set. These documents are provided in Adobe Acrobat (.pdf) format and can be found in the following directories:

- After HP OpenView Dashboard installation, in the following directory on the HP OpenView Dashboard management station:
 - *Windows*: <install_dir>\paperdocs\dashboard\
 - *UNIX*: /opt/OV/paperdocs/dashboard/
- On the product DVD-ROM in the following directory:
 - *Windows*: \Docs\
 - *UNIX*: /Docs/

For information on how to obtain the most recent documents, see [Documentation Updates](#) on page 7.

Table 1 HP OpenView Dashboard Documentation

Document Title and Filename	Main Topics
<i>Installation Guide</i> Installation.pdf	Installing and uninstalling HP OpenView Dashboard
<i>RealTime Health View Concepts Guide</i> rhview/ RealTime_Health_View_Concept.pdf	<ul style="list-style-type: none">• Introduction to the terms and concepts of RealTime Health View
<i>RealTime Health View Administrator Guide</i> rhview/RealTime_Health_View_Admin.pdf	<ul style="list-style-type: none">• Configuring RealTime Health View• Maintaining RealTime Health View
<i>Smart Link Integration for Mercury Business Availability Center Installation Guide</i> MBACovSLI/Mercury_SLI_Install.pdf	Installing Smart Link Integration (SLI) for Mercury Business Availability Center
<i>Smart Link Integration for BMC Remedy Help Desk Installation Guide</i> RemedyOvSLI/Remedy_SLI_Install.pdf	Installing Smart Link Integration (SLI) for Remedy Help Desk

Table 1 HP OpenView Dashboard Documentation (cont'd)

Document Title and Filename	Main Topics
<i>Operations View Quick Start Guide</i> opview/Quick_Start.pdf	<ul style="list-style-type: none">• Running the Operations View demonstration portal view• Operations View tutorial
<i>Operations View Administrator Guide</i> opview/Administration.pdf	<ul style="list-style-type: none">• Essential concepts• Planning roadmap for using Operations View• Connecting Operations View to management products• Configuring Operations View portlets• Configuring Operations View data filters• Deploying a portlet application• Troubleshooting
<i>Operations View Migration Guide</i> opview/Migration.pdf	<ul style="list-style-type: none">• Overview of migrating from HP OpenView Service Information Portal (SIP) version 3.2 to Operations View• SIP and Operations View comparison• Migration use models• Using the Operations View Migration Wizard• Manual steps for migration• Troubleshooting
<i>Operations View Integration Guide: NNM</i> opview/NNM_Integration.pdf	<ul style="list-style-type: none">• Connecting Operations View to HP OpenView Network Node Manager (NNM)• Configuring the NNM portlets• Customizing the NNM portlets• Filtering NNM data• Troubleshooting

Table 1 HP OpenView Dashboard Documentation (cont'd)

Document Title and Filename	Main Topics
<i>Operations View Integration Guide: OVO and OVSN</i> opview/OVO_OVSN_Integration.pdf	<ul style="list-style-type: none">• Connecting Operations View to HP OpenView Operations (OVO) and HP OpenView Service Navigator (OVSN)• Configuring the OVO and OVSN portlets• Customizing the OVO and OVSN portlets• Filtering OVO and OVSN data• Troubleshooting
<i>Operations View Integration Guide: OVIS</i> opview/OVIS_Integration.pdf	<ul style="list-style-type: none">• Connecting Operations View to HP OpenView Internet Services (OVIS)• Configuring the OVIS portlets• Customizing the OVIS portlets• Troubleshooting
<i>Operations View Integration Guide: OVPM</i> opview/OVPM_Integration.pdf	<ul style="list-style-type: none">• Connecting Operations View to HP OpenView Performance Manager (OVPM)• Configuring the OVPM portlets• Customizing the OVPM portlets• Filtering OVPM data• Troubleshooting
<i>Operations View Integration Guide: OVSD, OVPI, and OVR</i> opview/OVSD_OVPI_OVR_Integration.pdf	<ul style="list-style-type: none">• Connecting Operations View to HP OpenView Service Desk (OVSD), HP OpenView Performance Insight (OVPI), and HP OpenView Reporter (OVR)• Configuring the OVSD, OVPI, and OVR portlets• Customizing the OVSD, OVPI, and OVR portlets• Troubleshooting

HP OpenView Dashboard Online Help

HP OpenView Dashboard supplies the following graphical interfaces for portal and portlet configuration:

RealTime Health View

- HP OpenView Dashboard Service Composer

Operations View

- Operations View Administrator Tool
- Operations View Migration Wizard (available from the Administrator Tool)

Each of the HP OpenView Dashboard graphical interfaces includes online help files that explain that interface.

- To access the top level of the help content for each interface, use the commands on the **Help** menu.
- To access context-specific help information in the Operations View interfaces, click **Help** within the window for which you want more information.

Documentation Updates

This manual's title page contains the following identifying information:

- Software version number, which indicates the software version
- Document release date, which changes each time the document is updated
- Software release date, which indicates the release date of this version of the software

To check for recent updates, or to verify that you are using the most recent edition of a document, go to:

http://ovweb.external.hp.com/lpe/doc_serv/

You will also receive updated or new editions if you subscribe to the appropriate product support service. Contact your HP sales representative for details.

Documentation Conventions

The HP OpenView Dashboard documentation uses the following conventions:

Table 2 HP OpenView Dashboard Documentation Conventions

Symbol	Meaning
<code><install_dir></code>	(Windows only.) The HP OpenView application directory. This directory contains all of the HP OpenView Dashboard files. The default location is: C:\Program Files\HP OpenView\
<code><data_dir></code>	(Windows only.) The HP OpenView data directory. This directory contains product configuration and data files. The default location is: C:\Program Files\HP OpenView\data
<code><portlet_app_dir></code>	(Operations View only.) The top-level directory for a deployed portlet application. This directory has the same name as the portlet application. The location of this directory depends on the installation platform and the portal server. <ul style="list-style-type: none">• Jetspeed on Windows: <code><install_dir>\nonOV\dashboard\jetspeed\1.6\jakarta-tomcat-5.5.9\webapps</code>• Jetspeed on UNIX: <code>/opt/OV/nonOV/dashboard/jetspeed/1.6/jakarta-tomcat-5.5.9/webapps</code>• BEA WebLogic on Windows (default): <code><bea_install_dir>\user_projects\applications</code>• BEA WebLogic on UNIX (default): <code><bea_install_dir>/user_projects/applications</code> <code><bea_install_dir></code> is the BEA WebLogic directory.
	A note that describes special information pertaining to the current topic.
	A tip that provides an alternate way to address the current topic.
	A caution that indicates a potential problem to avoid.

