

HP OpenView Select Identity

Connector for Oracle® PeopleSoft Human Capital Management

Connector Version: 1.2

Installation and Configuration Guide

Document Release Date: March 2006

Software Release Date: March 2006



Legal Notices

Warranty

The only warranties for HP products and services are set forth in the express warranty statements accompanying such products and services. Nothing herein should be construed as constituting an additional warranty. HP shall not be liable for technical or editorial errors or omissions contained herein.

The information contained herein is subject to change without notice.

Restricted Rights Legend

Confidential computer software. Valid license from HP required for possession, use or copying. Consistent with FAR 12.211 and 12.212, Commercial Computer Software, Computer Software Documentation, and Technical Data for Commercial Items are licensed to the U.S. Government under vendor's standard commercial license.

Copyright Notices

© Copyright 2006 Hewlett-Packard Development Company, L.P.

This product includes software developed by the Apache Software Foundation (<http://www.apache.org/>). Portions Copyright (c) 1999-2003 The Apache Software Foundation. All rights reserved.

Select Identity uses software from the Apache Jakarta Project including:

- Commons-beanutils
- Commons-collections
- Commons-logging
- Commons-digester
- Commons-httpclient
- Element Construction Set (ecs)
- Jakarta-poi
- Jakarta-regexp
- Logging Services (log4j)

Additional third party software used by Select Identity includes:

- JasperReports developed by SourceForge
- iText (for JasperReports) developed by SourceForge
- BeanShell
- Xalan from the Apache XML Project
- Xerces from the Apache XML Project
- Java API for XML Processing from the Apache XML Project
- SOAP developed by the Apache Software Foundation
- JavaMail from SUN Reference Implementation
- Java Secure Socket Extension (JSSE) from SUN Reference Implementation
- Java Cryptography Extension (JCE) from SUN Reference Implementation
- JavaBeans Activation Framework (JAF) from SUN Reference Implementation

- OpenSPML Toolkit from OpenSPML.org
- JGraph developed by JGraph
- Hibernate from Hibernate.org
- BouncyCastle engine for keystore management, bouncycastle.org

This product includes software developed by Teodor Danciu (<http://jasperreports.sourceforge.net>). Portions Copyright (C) 2001-2004 Teodor Danciu (teodord@users.sourceforge.net). All rights reserved.

Portions Copyright 1994-2004 Sun Microsystems, Inc. All Rights Reserved.

This product includes software developed by the Waveset Technologies, Inc. (www.waveset.com). Portions Copyright © 2003 Waveset Technologies, Inc. 6034 West Courtyard Drive, Suite 210, Austin, Texas 78730. All rights reserved.

Portions Copyright (c) 2001-2004, Gaudenz Alder. All rights reserved.

Trademark Notices

AMD and the AMD logo are trademarks of Advanced Micro Devices, Inc.

Intel and Pentium are trademarks or registered trademarks of Intel Corporation in the United States, other countries, or both.

JAVA™ is a US trademark of Sun Microsystems, Inc.

Microsoft® and Windows® are U.S. registered trademarks of Microsoft Corporation.

Oracle® is a registered US trademark of Oracle Corporation, Redwood City, California

UNIX® is a registered trademark of The Open Group.

Support

Please visit the HP OpenView support web site at:

<http://www.hp.com/managementsoftware/support>

This web site provides contact information and details about the products, services, and support that HP OpenView offers.

HP OpenView online software support provides customer self-solve capabilities. It provides a fast and efficient way to access interactive technical support tools needed to manage your business. As a valuable support customer, you can benefit by using the support site to:

- Search for knowledge documents of interest
- Submit enhancement requests online
- Download software patches
- Submit and track progress on support cases
- Manage a support contract
- Look up HP support contacts
- Review information about available services
- Enter discussions with other software customers
- Research and register for software training

Most of the support areas require that you register as an HP Passport user and log in. Many also require a support contract.

To find more information about access levels, go to:

http://www.hp.com/managementsoftware/access_level

To register for an HP Passport ID, go to:

<http://www.managementsoftware.hp.com/passport-registration.html>

Contents

- 1 Introduction 7
 - About HP OpenView Select Identity 7
 - About Connectors 7
 - About PeopleSoft Connector 7
- 2 Installing the Connector 11
 - System Requirements 12
 - Installation Procedure 13
 - Extract the Contents of Schema Files 13
 - Deploy the Connector on Application Server 14
 - Extract the Contents of Setup Files 14
 - Modify the Properties Files 14
 - Deploy the Agent File on Application Server 15
 - Encrypt OVSI User Password 15
 - Verify the Agent Deployment 15
 - Configure the Connector with OVSI 16
 - Configure PeopleSoft Integration Broker 21
 - Configuration Steps 24
- 3 Uninstalling the Connector 29
 - Uninstalling the Agent 29
- A Sample Images 31

1 Introduction

This chapter gives an overview of the HP OpenView Select Identity connector for Oracle PeopleSoft Human Capital Management. An HP OpenView Select Identity connector allows you to provision users and manage identities on PeopleSoft Human Resources module. At the end of this chapter, you will be able to know about:

- the benefits of HP OpenView Select Identity
- the role of a connector
- the connector for Oracle PeopleSoft Human Capital Management

About HP OpenView Select Identity

HP OpenView Select Identity (OVSI) provides a new approach to identity management. It helps you manage the entire identity lifecycle of an enterprise application. By using OVSI, you can automate the process of provisioning and managing user accounts and access privileges across platforms, applications, and corporate boundaries. OVSI communicates with the enterprise information system through connectors, and automates the tasks of identity management. The enterprise information system, which is also referred to as **resource**, can be a database, a directory service, or an ERP package, among many others.

About Connectors

You can establish a connection between a resource and OVSI by using a connector. A connector is resource specific. It is installed on the system where OVSI is installed. The combination of OVSI and connector helps you perform a set of tasks on the resource to manage identity. A connector can be **unidirectional** or **bidirectional**. A unidirectional connector helps you manage identities from OVSI, but if any change takes place in resource, it cannot communicate that back to OVSI. On the other hand, a bidirectional connector can reflect the changes made on resource back to OVSI. This property of bidirectional connectors is known as **reverse synchronization**.

About PeopleSoft Connector

The connector for Oracle PeopleSoft Human Capital Management — hereafter referred to as the PeopleSoft connector — enables OVSI to provision users in the Human Resources module of a PeopleSoft Human Capital Management (HCM) 8.8 system. The PeopleSoft connector is a two-way connector and provides an agent that can send changes made to data in PeopleSoft to Select Identity.

Specifically, the connector's agent can capture the creation of an employee in Peoplesoft Human Resources management system (HRMS) including personal and job information. The agent also captures employee modifications performs in the HRMS application. All captured data is sent through the connector to the Select Identity server.

When the employee status changes from Active to any other state, the user is disabled on the Select Identity server and the user's status is shown as S (for suspended). If the employee regains Active status, the employee is enabled in the PeopleSoft application and status is changed to A (for active).

Also, the PeopleSoft connector can maintain PeopleSoft HCM Application users. The connector can provision users into PeopleSoft application and can reconcile changes done on PeopleSoft application. This functionality is implemented using the Component Interface functionality of PeopleSoft. In addition, the connector can capture when PeopleSoft HCM Application users are created, modified, or deleted using the Integration Broker technology.

All connector functionality was implemented using the integration Broker capabilities of the PeopleSoft application. As much as possible, all default messages and message channels provided by the PeopleSoft application are used. The changes are captured and sent to the Select Identity Web Service, which handles requests and generates SPML requests that are forwarded to the Select Identity server. All changes are captured in the real time and sent immediately. When the Web Service receives a request from the connector, it parses the request using the XSL file provided with the connector. You can modify the XML and XSL file to add attributes. However, the defined attributes should not be removed from the files.

The Enable and Disable Employee functions are provided by using an external call, which generates disables or enables all Service request for the user in all Services. This external call is triggered by a modify user request, which uses a new workflow template that is invoked when the EMPL_STATUS attribute changes from A to S or vice versa.

The Username attribute is required for all users in the Select Identity. However, there is no Username attribute associated with employee information in PeopleSoft. This is resolved with the following options:

- The user name is the same as the employee ID
- The user name is generated before passing the request to Select Identity

The default XSL file provided with the PeopleSoft connector is configured to generate the user name using the <FIRST_NAME><LAST_NAME>. You can edit this file to generate the user name as desired.

Password is also a required field for the user in the Select Identity. The default password can be generated or hardcoded in the XSL file so that it is passed to the Select Identity; it can be changed later.

The connector can perform the following operations on PeopleSoft application.

- Add, update, and remove users
- Retrieve user attributes
- Enable and disable users
- Verify a user's existence
- Reset user passwords
- Retrieve all entitlements
- Grant and revoke entitlements to and from users



This connector can be used with OVSI 4.0 and 3.3.1.

2 Installing the Connector

The PeopleSoft connector is packaged in the following files, which are located in the PeopleSoft folder on the Select Identity Connector CD:

Table 1 PeopleSoft Connector Files

Serial Number	File Name	Description
1.0	PeopleSoftConnector.rar	This is the Resource Adapter Archive (RAR) file. It contains the binaries for the connector.
2.0	PSEmpSchema.jar	It contains the following mapping files, which control how Select Identity and PeopleSoft fields are mapped to each other: <ul style="list-style-type: none">• PeopleSoftEmp.xml — It maps the Select Identity fields to the PeopleSoft fields, which enables Select Identity to provision data in PeopleSoft HCM systems.• PeopleSoftEmp.xsl — It maps attributes on the PeopleSoft HCM server to attributes on the Select Identity server. This file is used by the agent during reverse synchronization.
3.0	PSEmpSetup.jar	It contains the agent configuration files for employees. Major constituents of this JAR file are: <ul style="list-style-type: none">• PSEmpOpAttr.properties — It contains the operational attributes required in the SPML request for reverse synchronization for HRMS employees.• PeopleSoftEmployeeStatus.sql — This contains SQL statements.• PSProperties.ini — It contains the configuration attributes.

Table 1 PeopleSoft Connector Files

Serial Number	File Name	Description
4.0	PSUsrSchema.jar	It contains the following mapping files: <ul style="list-style-type: none"> • PeopleSoftUsr.xml — It maps the Select Identity user attributes to those on the Peoplesoft HCM Application server. • PeopleSoftUsr.xsl — It maps attributes on the PeopleSoft HCM Application server to attributes on the Select Identity server. This file is used by the agent during reverse synchronization.
5.0	PSUsrSetup.jar	It contains the agent configuration files for application users. Major constituents of this JAR file are: <ul style="list-style-type: none"> • PSUsrOpAttr.properties — It contains the operational attributes required in the SPML request for reverse synchronization for application users. • PSProperties.ini — It contains the configuration attributes.
6.0	PeopleSoftAgent.war	It contains the files that comprise the PeopleSoft agent.



MANIFEST.MF and PSProperties.ini are bundled with both PSEmpSetup.jar and PSUsrSetup.jar files. If you extract both the files, overwrite MANIFEST.MF and PSProperties.ini.

System Requirements

The PeopleSoft connector is supported in the following environment:

Table 2 Platform Matrix for PeopleSoft connector

Select Identity Version	Application Server	Database
3.3.1	WebLogic 8.1.4 on Windows 2003	SQL Server 2000
	WebLogic 8.1.4 on Red Hat Enterprise Linux 3.0	Oracle 9i
	WebLogic 8.1.4 on Solaris 9	Oracle 9i
3.3.1	WebLogic 8.1.4 on Windows 2003	SQL Server 2000
	WebLogic 8.1.4 on Red Hat Enterprise Linux 3.0	Oracle 9i
	WebLogic 8.1.4 on Solaris 9	Oracle 9i
4.0	The PeopleSoft connector is supported on all the platform configurations of Select Identity 4.0	

This connector supports PeopleSoft Human Capital Management (HCM), Human Resources module, version 8.8 (People Tools version 8.4.5).



The connector also works with other versions of Peoplesoft HCM that provide the Integration Broker functionality and similar APIs for the Component Interface.

Installation Procedure

Perform the following tasks to achieve successful installation of PeopleSoft connector.

- 1 Extract the Contents of Schema Files
- 2 Deploy the Connector on Application Server
- 3 Extract the Contents of Setup Files
- 4 Modify the Properties Files
- 5 Deploy the Agent File on Application Server
- 6 Configure the Connector with OVSI

Extract the Contents of Schema Files

PeopleSoft connector is packaged with more than one schema file. These files are `PSEmpSchema.jar` and `PSUsrSchema.jar`. To extract the content of these files in right location, perform the following step.

- 1 Create a schema subdirectory in Select Identity home directory.

- 2 Extract the contents of `PSEmpSchema.jar` and `PSUsrSchema.jar` in this schema subdirectory.
- 3 Ensure that the `CLASSPATH` environment variable in the application server startup script references the schema subdirectory.

Deploy the Connector on Application Server

You must deploy the RAR file (`PeopleSoftConnector.rar`) of the connector on an application server. Before deploying the RAR file, you must copy it to a local directory from the connector CD. Refer to *HP OpenView Select Identity Connector Deployment Guide* for more information on deploying a connector on an application server.

Extract the Contents of Setup Files

PeopleSoft connector also comes with the setup JAR files, which are `PSEmpSetup.jar` and `PSUsrSetup.jar`. These files contain agent configuration information. Extract the contents of these files to Select Identity home directory.

Modify the Properties Files

For PeopleSoft Employees

Modify the `PSEmpOpAttr.properties` file to include the corresponding mapping file name and the resource ID:

```
urn:trulogica:concero:2.0#resourceType=PeopleSoftEmp
urn:trulogica:concero:2.0#resourceId=<PeopleSoft Empl res ID>
```

Then, modify `PSProperties.ini` to include the Select Identity URL. The SPML request needs to be changed, as in this example:

```
CONCERO_SERVER_URL=http://localhost:7001/lmz/webservice
```

For PeopleSoft Application User

Modify the `PSUsrOpAttr.properties` file to include the corresponding mapping file name and the resource ID:

```
urn:trulogica:concero:2.0#resourceType=PeopleSoftUsr
urn:trulogica:concero:2.0#resourceId=<PeopleSoft User res ID>
```

Then, modify `PSProperties.ini` to include the Select Identity URL. The SPML request needs to be changed, as in this example:

```
CONCERO_SERVER_URL=http://localhost:7001/lmz/webservice
```

Modify this line:

```
PEOPLESOFT_SI_USR_ADMIN=<PeopleSoft admin user for SI's use>
```

where the Peoplesoft admin user is the user that Select Identity will use to provision users in the PeopleSoft HCM Application module. This attribute is introduced to prevent cyclic blocks.



It is assumed that the user created for Select Identity will be used to log in to the PeopleSoft application using the PeopleSoft connector. If changes are made directly in the Peoplesoft application using the same login information, the changes will not be synchronized back to Select Identity and will be ignored (for cyclic requests).

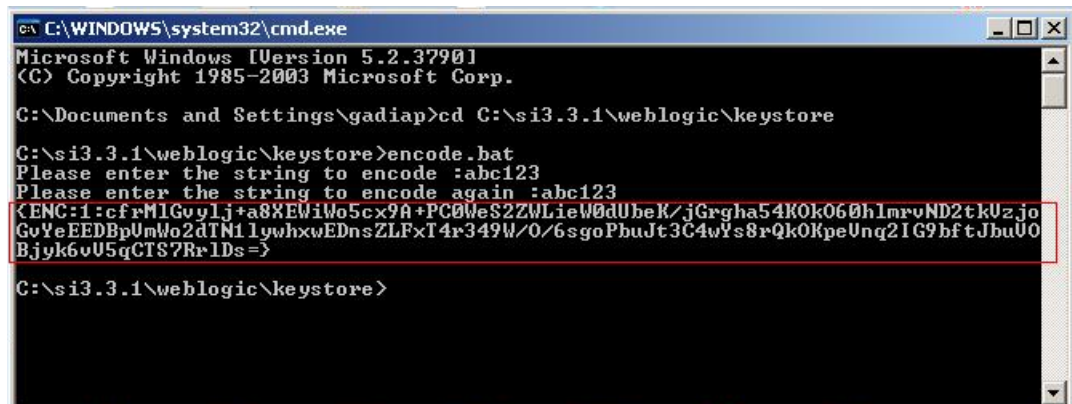
Deploy the Agent File on Application Server

The connector's agent is packaged in a Web Application Archive (WAR) file. You must deploy it to application server before using it. Perform the following steps to deploy it on WebLogic.

- 1 Sign in to WebLogic console and go to the same domain where the connector has been deployed.
- 2 On left pane, click and expand **Deployments**.
- 3 Click **Web Application Modules**. Web Applications page appear at the right pane.
- 4 Click the link **Deploy a new Web Application Module**. Deploy a Web Application Module page appears on right pane.
- 5 Browse and select the `PeopleSoftAgent.war` file.
- 6 Click **Target Module**.
- 7 Select **My Server** (your server instance) checkbox, and then click **Continue**.
- 8 Review your choice, keep the default setting, and then click **Deploy**.
- 9 The Status of Last Action column should display Success.

Encrypt OVSI User Password

To encrypt the password, run `encode.bat` (on Windows) or `encode.sh` (on UNIX), which is provided in the `weblogic/keystore` subdirectory in the Select Identity home directory. This utility prompts you for the password to encrypt and will generate the encrypted password. Be sure to copy the entire encrypted password in the field, as shown here:



```
C:\WINDOWS\system32\cmd.exe
Microsoft Windows [Version 5.2.3790]
(C) Copyright 1985-2003 Microsoft Corp.

C:\Documents and Settings\gadiap>cd C:\si3.3.1\weblogic\keystore

C:\si3.3.1\weblogic\keystore>encode.bat
Please enter the string to encode :abc123
Please enter the string to encode again :abc123
<ENC:1:cfrM1Gou1j+a8XEWiWo5cx9A+PC0WeS2ZWLieW0dUbeK/jGrgha54K0k060h1mrvND2tkUz.jo
GvYeEEDBpUmWo2dTN11ywhxwEDnsZLFxT4r349W/0/6sgoPbuJt3C4wYs8rQk0KpeUnq2IG9bf tJbuU0
Bjyk6vU5qCTS7Rr1Ds=>

C:\si3.3.1\weblogic\keystore>
```

Verify the Agent Deployment

You can run following url to verify whether the agent is deployed correctly in your internet browser:

- For PeopleSoft HRMS Employees:

`http://<server>:<port>/PeopleSoftAgent/PeopleSoftEmpServlet?&siusername=<siusername>&siuserpasswd=<encrypted siuserpasswd>`

where `<server>` is the name of the server where the PeopleSoft connector agent is deployed and `<port>` is the port on which it is available

For example:

http://ob-stlpool2.asiapacific.hpqcorp.net:7001/PeopleSoftAgent/PeopleSoftEmpServlet?&siusername=<siusername>&siuserpasswd=<encrypted siuserpassword>

- For PeopleSoft Application User:

http://<server>:<port>/PeopleSoftAgent/PeopleSoftUsrServlet?&siusername=<siusername>&siuserpasswd=<encrypted siuserpassword>

where <server> is the name of the server where the PeopleSoft connector agent is deployed and <port> is the port on which it is available

For example:

http://ob-stlpool2.asiapacific.hpqcorp.net:7001/PeopleSoftAgent/PeopleSoftUsrServlet?&siusername=<siusername>&siuserpasswd=<encrypted siuserpassword>

A message saying `This is a Parser Servlet` in the browser indicates the PeopleSoft Agent is properly deployed and properties file, which it uses, is in classpath.

Configure the Connector with OVSI

After deploying the connector to an application server, you must configure it with Select Identity. To achieve successful configuration, you must perform the following steps.

- 1 Add a new connector — Add a new connector on OVSI. Refer to *HP OpenView Select Identity Connector Deployment Guide* for information on adding a new connector. While adding the connector, under Current Resource Connectors section in Manage Connectors page, do the following:
 - In the Connector Name text box, specify a name for the connector.
 - In the Pool Name text box, enter **eis/PeopleSoftConnector**
 - Under Mapper Available section, select **No**.
- 2 Add resources — You must add resources to OVSI that use the newly created connector. PeopleSoft connector uses two resources (PeopleSoft Employee and PeopleSoft Application). Refer to *HP OpenView Connector Deployment Guide* for the necessary instructions to achieve this. While entering the resource parameters for PeopleSoft connector, refer to the table below.

Table 3 Resource Configuration Parameters

Field Name	Sample Values	Description
Resource Name	<i>PeopleSoftEmp or PeopleSoftAppUser</i>	Name given to the resource. If you enabled reverse synchronization, this must be the same as the value provided for the urn:trulog-ica:concerno:2.0#resourceId attribute on the agent console.
Resource Type	<i>PeopleSoftHCM</i>	The connector that was deployed in step 1 on page 16.
Authoritative Source	<i>No / Yes</i>	Whether this resource is a system that is considered to be the authoritative source for user data in your environment. Specify No if the connector is not enabled for reverse synchronization. Specify Yes if you want to add users through reverse synchronization. If the resource is not authoritative, the resource can only modify user entitlements during reverse synchronization.
Associate to Group	<i>Selected</i>	Whether the system uses the concept of groups. For the PeopleSoft connector, select this option.
Host Name	<i>Peoplesoft.hp.com</i>	The NETBIOS name or IP address of the PeopleSoft server.
Server Port	<i>9000</i>	The Jolt port of the PeopleSoft server.
UserName	<i>PeopleSoftuser</i>	The user name on the Peoplesoft server.
User Password	<i>password</i>	The user's password.
MappingFile	<i>PeopleSoftEmp.xml or PeopleSoftUsr.xml</i>	The XML mapping file used to map resource attributes to Select Identity attributes: PeopleSoftEmp.xml for PeopleSoft HRMS Employees and PeopleSoftUsr.xml for PeopleSoft Application User.
Symbolic ID	<i>Sa1</i>	The symbolic ID that will be assigned to the PeopleSoft application user and the user that is created should have the same value. This is the value which is assigned to the PeopleSoft admin user, which SI will use to provision. Note: This is relevant for PeopleSoft application user only.
isEmployee	<i>Yes / No</i>	Whether the user is an employee. Specify Yes for PeopleSoft employee and No for PeopleSoft Application user.

- 3 Map the attributes — You must map the Select Identity attributes to the attributes of the resource. While mapping the attributes, refer to the following table for resource specific mapping information.

Table 4 PeopleSoft HRMS Employees Mapping Information

Select Identity Resource Attribute	PeopleSoft Resource Attribute	Description
UserName	UserName	User Name of an employee in PeopleSoft HRMS.
Password	Password	Password of the employee in PeopleSoft HRMS.
BASE_LANGUAGE_CD	BASE_LANGUAGE_CD	
EMPLID	EMPLID	Employee ID
EMAIL_ADDR	EMAIL_ADDR	Email Address of the employee.
FIRST_NAME	FIRST_NAME	First name of the employee.
MIDDLE_NAME	MIDDLE_NAME	Middle name of the employee.
LAST_NAME	LAST_NAME	Last name of the employee.
NAME_PREFIX	NAME_PREFIX	Name prefix of the employee.
PhBus	PhBus	Business Phone number of the employee.
PhRes	PhRes	Residential ph no. of the employee.
Fax	Fax	Fax no. of the employee.
Effective Date	EFFDT	Effective Joining date of the employee.
BusCity	BusCity	Business City of the employee.
BusAddr1	BusAddr1	First line of Business Address of the employee.
BusAddr2	BusAddr2	Second line of business address of the employee.
BusZip	BusZip	Zip code of business address of the employee.
BusCountry	BusCountry	Country of the employee.
Addr1	Addr1	First line of residential Address of the employee.

Table 4 PeopleSoft HRMS Employees Mapping Information

Select Identity Resource Attribute	PeopleSoft Resource Attribute	Description
Addr2	Addr2	Second line of residential Address of the employee.
BIRTHCOUNTRY	BIRTHCOUNTRY	Birth country of the employee.
BIRTHDATE	BIRTHDATE	Birth date of the employee.
ORIG_HIRE_DT	ORIG_HIRE_DT	Original hire date of the employee.
EMPL_STATUS	EMPL_STATUS	Employee status.
EMPL_STATUS_REASON	EMPL_STATUS_REASON	Description for employee status
SUPERVISOR_ID	SUPERVISOR_ID	Supervisor id of the employee.
DEPTID	DEPTID	Department ID.
BUSINESS_UNIT	BUSINESS_UNIT	Business unit.
LOCATION	LOCATION	Location.
COMPANY	COMPANY	Company.
JOBCODE	JOBCODE	Job code.
State	State	State.
Zip	Zip	Zip
City	City	City
Cell	Cell	
Country	Country	

Table 4 PeopleSoft HCM Application Users Mapping Information

Select Identity Resource Attribute	PeopleSoft Resource Attribute	Description
UserName	OPRID	Must be unique
Password	Password	
Language	BASE_LANGUAGE_CD	
UserDescription	UserDescription	
PrimaryPermissionList	PrimaryPermissionList	
RowSecurityPermission-List	RowSecurityPermission-List	

Table 4 PeopleSoft HCM Application Users Mapping Information

Select Identity Resource Attribute	PeopleSoft Resource Attribute	Description
NavigatorHomePage	NavigatorHomePage	
ProcessProfile	ProcessProfile	
CurrencyCode	CurrencyCode	
UserIDAlias	UserIDAlias	Must be unique
AlternateUserID	AlternateUserID	
SupervisingUserID	SupervisingUserID	
EMPLID	EMPLID	
EMAILID	EMAILID	Any other type of email address created in the PeopleSoft HCM Application other than pre-defined email types
EMAILTYPE	EMAILTYPE	Works in tandem with EMAILID; if a value is assigned to EMAILTYPE such as HOME, BUS, WORK, or BB, EMAILTYPE is set to the email value of the corresponding type.
PrimaryEmail	PrimaryEmail	Takes the values HOME, BUS, WORK, and BB and makes the corresponding email address the primary email address for the user; by default, it sets the value of EMAILID to OTH email address and makes it primary
BusEmail	BusEmail	Business email address
WorkEmail	WorkEmail	Work email address
HomeEmail	HomeEmail	Home email address
BbEmail	BbEmail	BlackBerry email address
EFFDT_FROM	EFFDT_FROM	
EFFDT_TO	EFFDT_TO	

- Associate the newly created resources to a service. Refer to the *Service Studio* chapter of *HP OpenView Select Identity Administrator Guide* for more information on service.

Configure PeopleSoft Integration Broker

This sections describes how to configure the PeopleSoft Integration Broker to enable it to capture employee and Application user changes that are made on the PeopleSoft resource.

Ensure that the following prerequisites are met before proceeding:

- Obtain a user who has permission on the Integration Broker (People Tools) and access to the Portal
- Ensure that the Default Gateway (Local) is configured with all default connectors
- Make sure the Integration Broker is configured and all related processes are running
- Generate PeopleSoft APIs for the Component Interface as follows:
 - a Open any Component Interface definition in the PeopleSoft Application Designer. You can open any definition because you can build APIs for all of them regardless of which one is open.
 - b Select **Build** → **PeopleSoft APIs**. The Build PeopleSoft API Bindings dialog displays.
 - c Select the **Build** check box in the Java Classes group box.
 - d For the target directory, enter the directory in which you want the Java class source files to be created. This directory is typically `PS_HOME\class`.
 - e Click **OK** to build the bindings that you selected.

The files that constitute the bindings are built in the specified location. If the operation is successful, a Done message displays in the PeopleSoft Application Designer Build window.

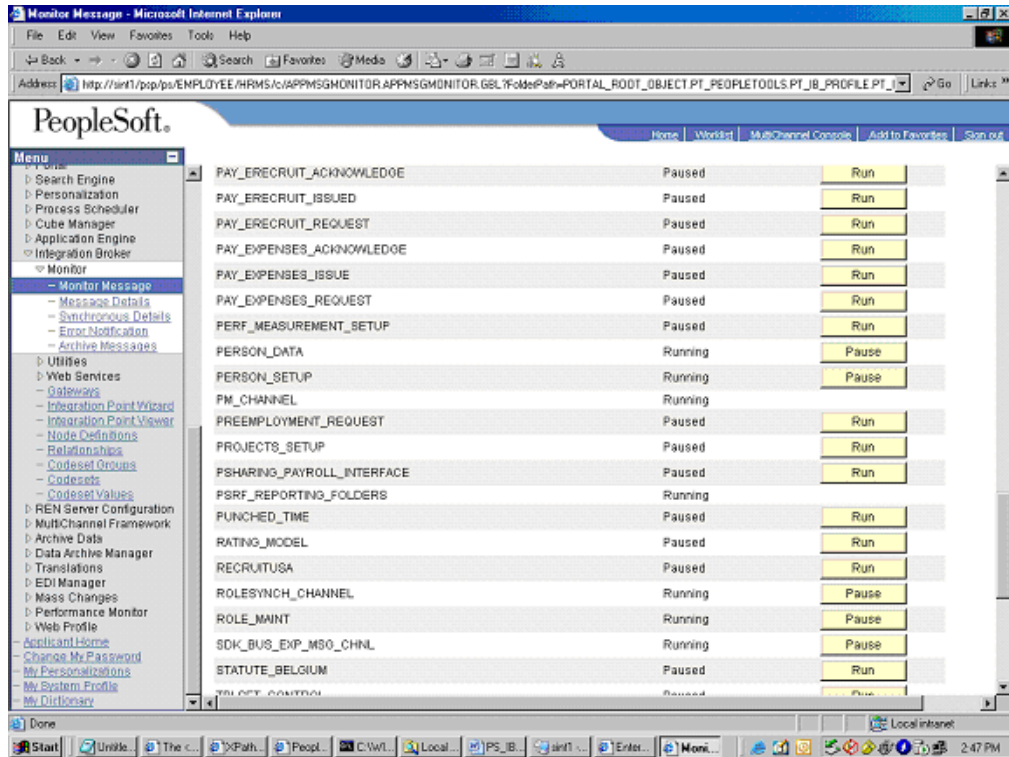
- f Compile the APIs that you generated. You can use these commands:

```
cd %PS_HOME%\class\PeopleSoft\Generated\CompIntfc
javac ?classpath %PS_HOME%\class\psjoa.jar *.java
cd c:\pt8\class\PeopleSoft\Generated\PeopleSoft
javac ?classpath %PS_HOME%\class\psjoa.jar *.java
```

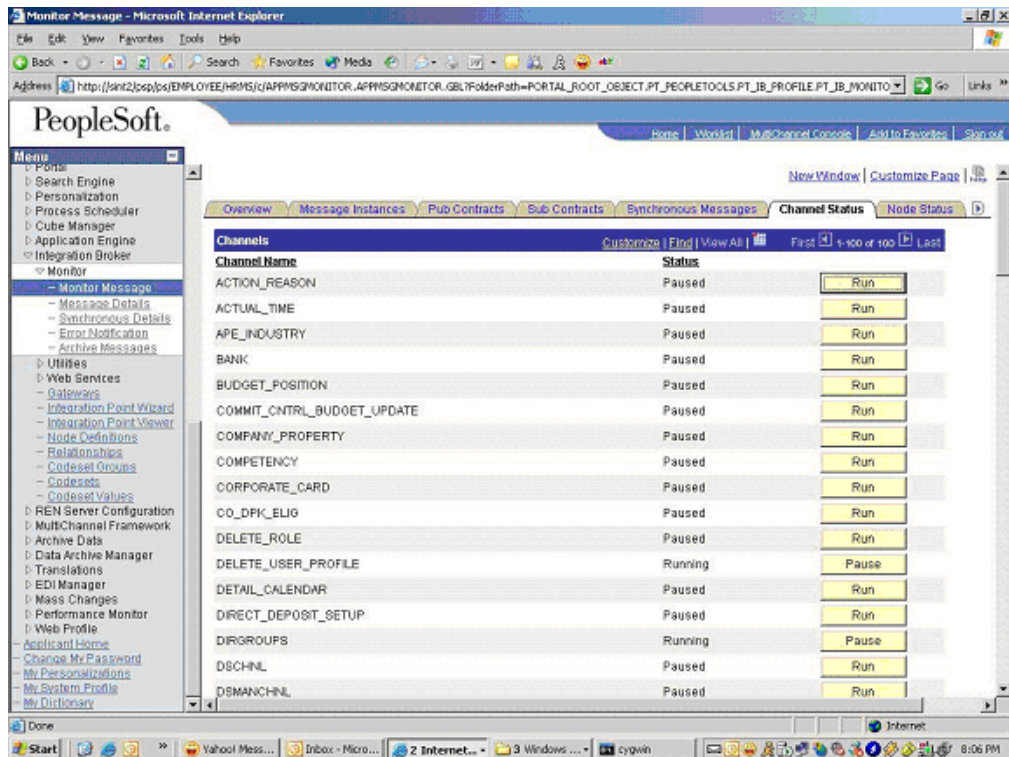
- g Package these generated class files into a JAR file called `PeopleSoft.jar`.
- h Place these generated JAR file (`PeopleSoft.jar`) and the `psjoa.jar` file in the classpath of the application server. Here is an example of an entry in the `myStartWL.cmd` on a WebLogic server on Windows:

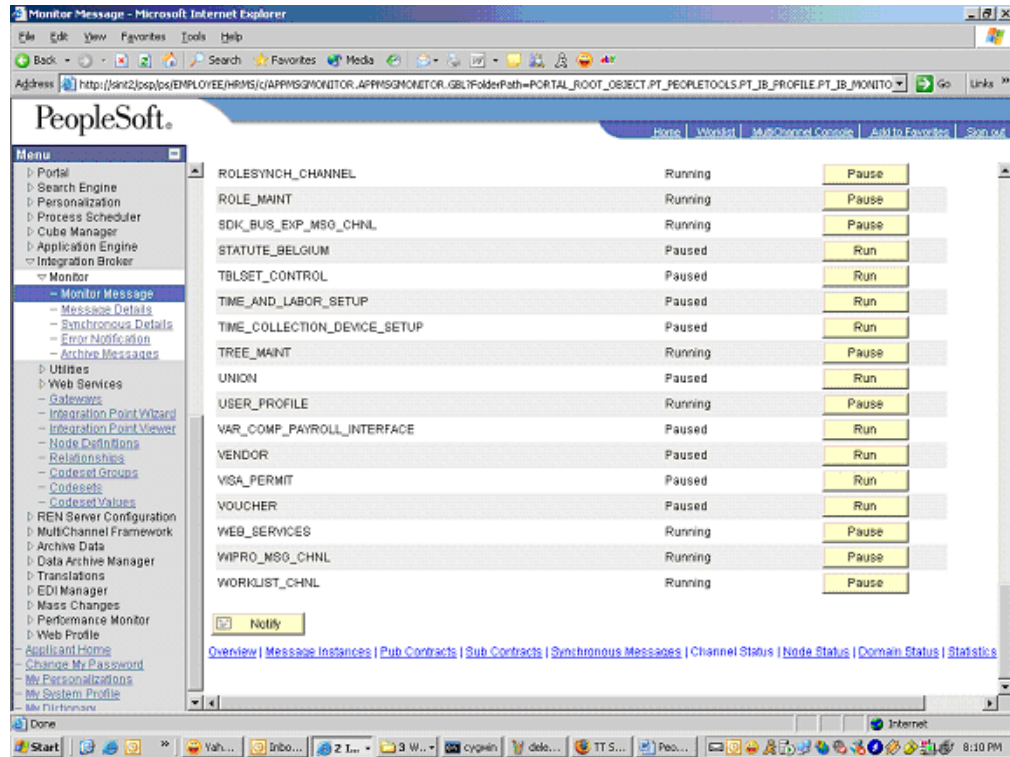
```
set CLASSPATH=C:\si3.3.1\weblogic\sysArchive\
connector.jar;C:\si3.3.1\weblogic\sysArchive\psjoa.jar;C:\si3.3.1\webl
ogic\sysArchive\PeopleSoft.jar;C:\si3.3.1\weblogic\sysArchive\sapjco.j
ar;C:\si3.3.1\weblogic\sysArchive;C:\si3.3.1\weblogic\sysArchive\ovsii
18n.jar;C:\si3.3.1\weblogic\lib\commons-logging.jar;C:\si3.3.1\weblogi
c\lib\commons-collections.jar;C:\si3.3.1\weblogic\lib\commons-digester
-1.3.jar;C:\si3.3.1\weblogic\lib\commons-httpclient-2.0.jar;C:\si3.3.1
\weblogic\lib\ecs-1.4.1.jar;C:\si3.3.1\weblogic\lib\commons-pool-1.2.j
ar;%CLASSPATH%
```

- *For PeopleSoft HRMS employees only*
Verify that the `PERSON_DATA` channel and `WORKFLOW_SYNC` status are Active and Running



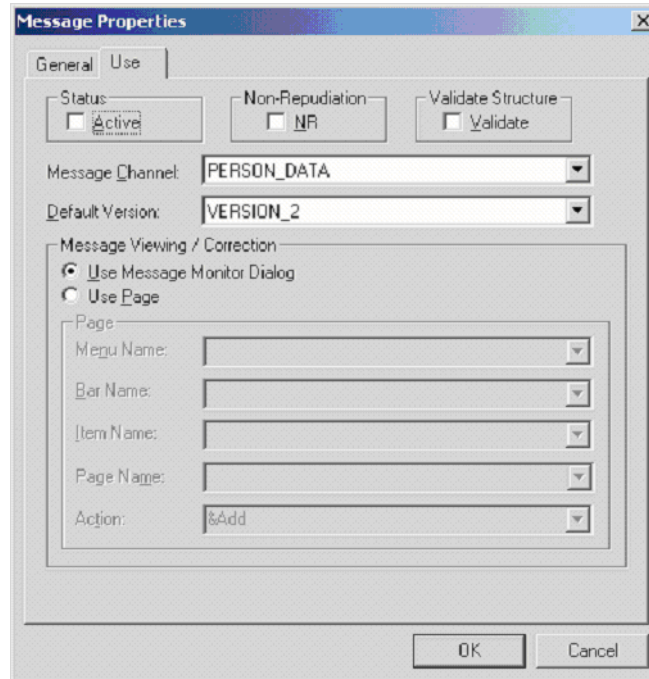
- For a PeopleSoft Application user only
Verify that the USER_PROFILE and DELETE_USER_PROFILE channel status are Active and Running





- Verify that the user has permission on the PERSON_DATA channel and the following:
 - *For a PeopleSoft HRMS employee*
Verify that the user has permission on the PERSON_BASIC_SYNC and WORKFORCE_SYNC messages
 - *For a PeopleSoft Application user*
Verify that the user has permission on the USER_PROFILE and DELETE_USER_PROFILE messages

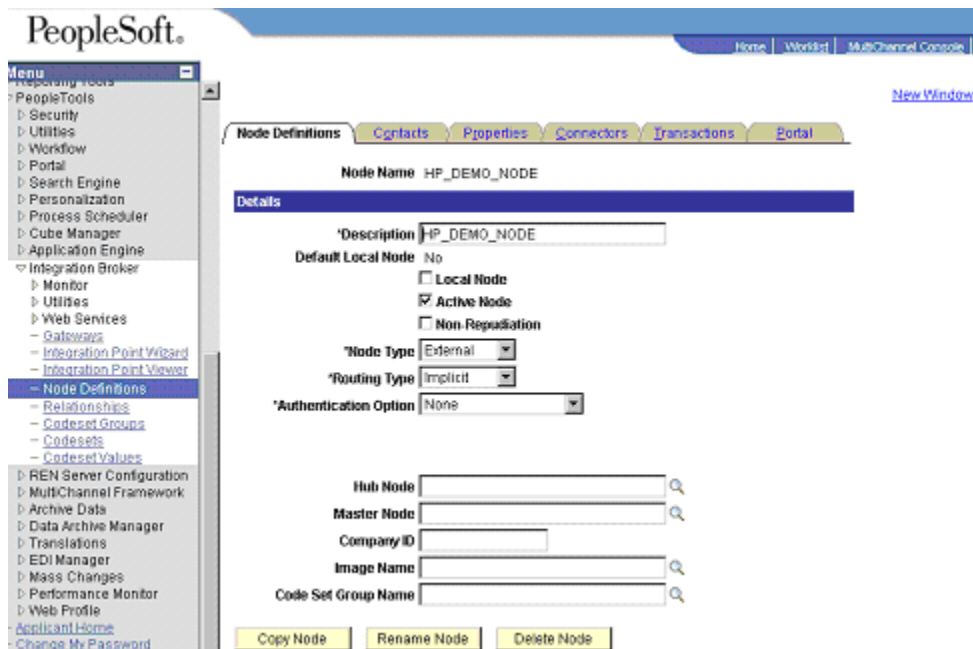
▶ For each message, check the message properties and ensure that the status is active (by checking the Status checkbox)



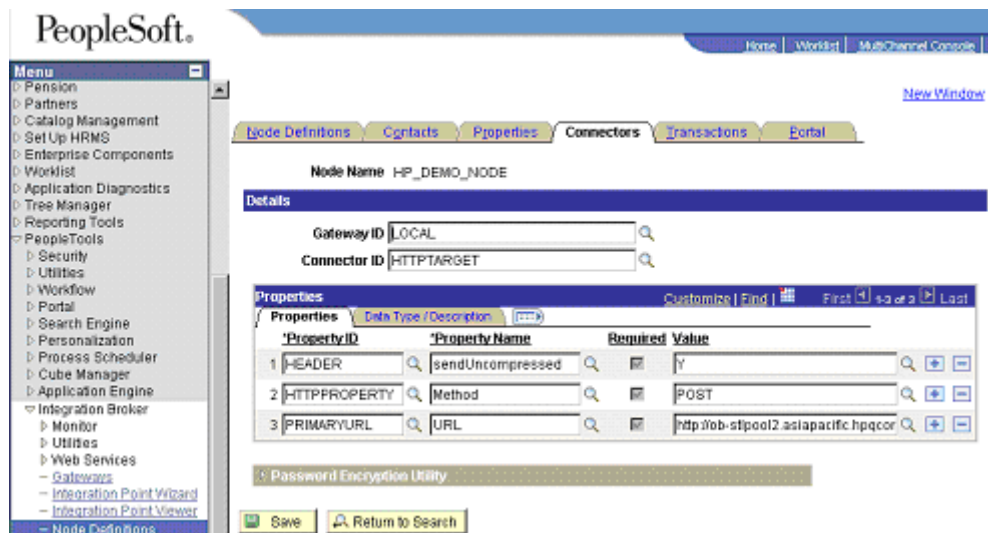
Configuration Steps

Complete the following steps using the web client to configure the Integration Broker:

- 1 Create a node with the following properties and options set:



- Click the **Connector** tab and enter the following values:



For a PeopleSoft HRMS employee

Enter the following for the PRIMARY URL value:

**http://<server>:<port>/PeopleSoftAgent/
PeopleSoftEmpServlet?&siusername=<siusername>&siuserpasswd=<encrypted
siuserpassword>**

where <server> is the name of the server where the PeopleSoft connector agent is deployed and <port> is the port on which it is available.

For example:

**http://ob-stlpool2.asiapacific.hpqcorp.net:7001/PeopleSoftAgent/
PeopleSoftEmpServlet?&siusername=<siusername>&siuserpasswd=<encrypted
siuserpassword>**

For a PeopleSoft HCM Application user

Enter the following for the PRIMARY URL value:

**http://<server>:<port>/PeopleSoftAgent/
PeopleSoftUsrServlet?&siusername=<siusername>&siuserpasswd=<encrypted
siuserpassword>**

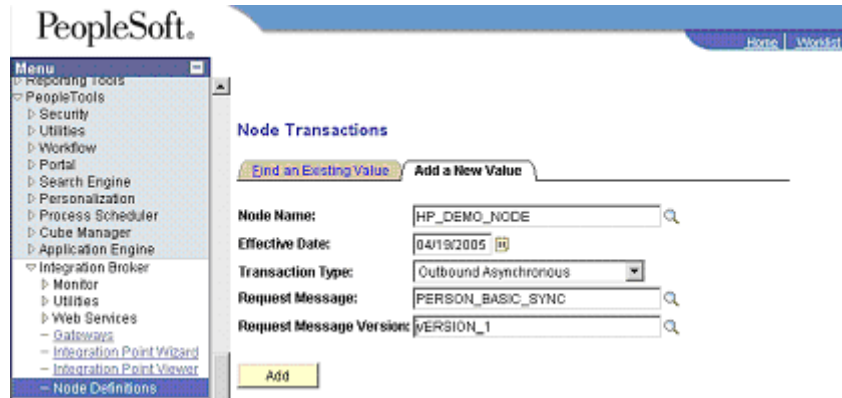
where <server> is the name of the server where the PeopleSoft connector agent is deployed and <port> is the port on which it is available.

For example:

**http://ob-stlpool2.asiapacific.hpqcorp.net:7001/PeopleSoftAgent/
PeopleSoftUsrServlet?&siusername=<siusername>&siuserpasswd=<encrypted
siuserpassword>**

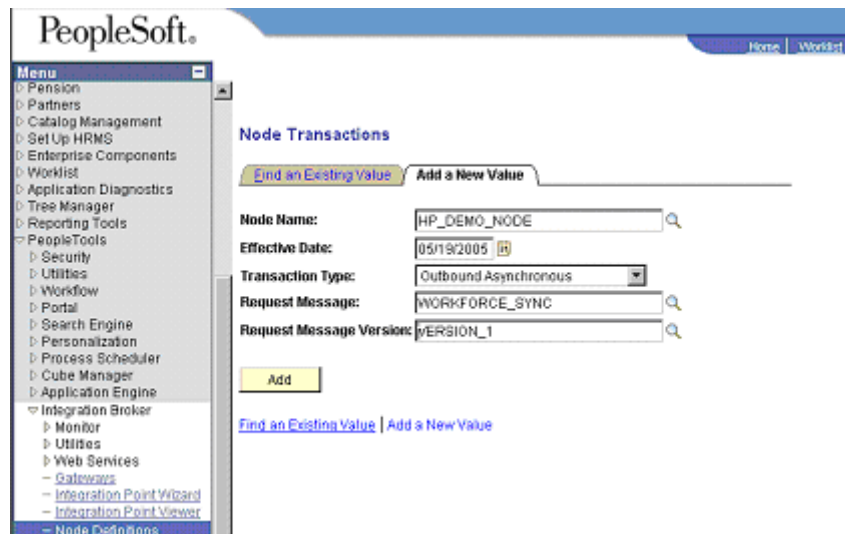
Refer to [Encrypt OVSI User Password](#) on page 15 to encrypt OVSI user password.

- For a PeopleSoft HRMS employee*
Create a node transaction for employee personal information. Specify these properties:



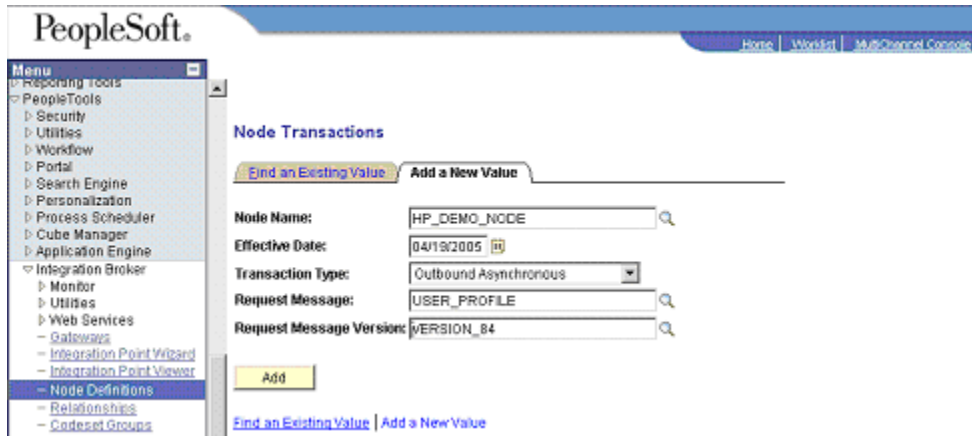
Also, make sure the transaction is active.

- 4 For a PeopleSoft HRMS employee
Create a node transaction for employee job information. Specify the following properties:



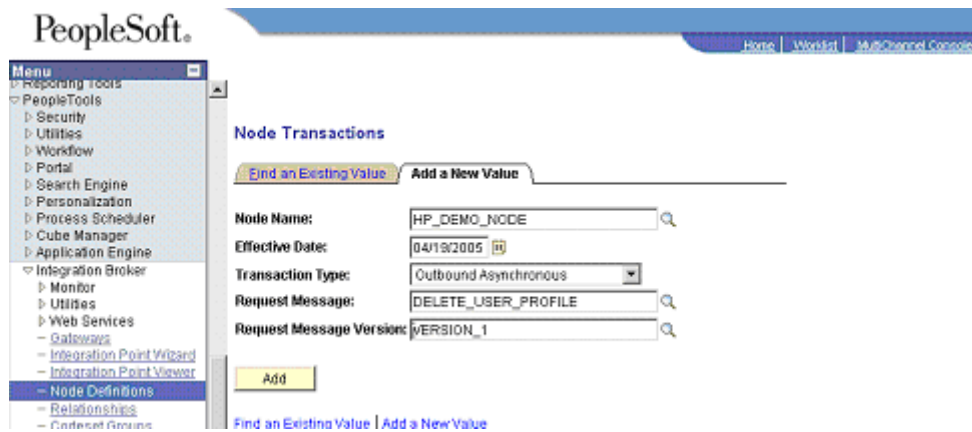
Make sure the transaction is active.

- 5 For a PeopleSoft HCM Application user
Create a node transaction for user's personal information. Specify these properties:



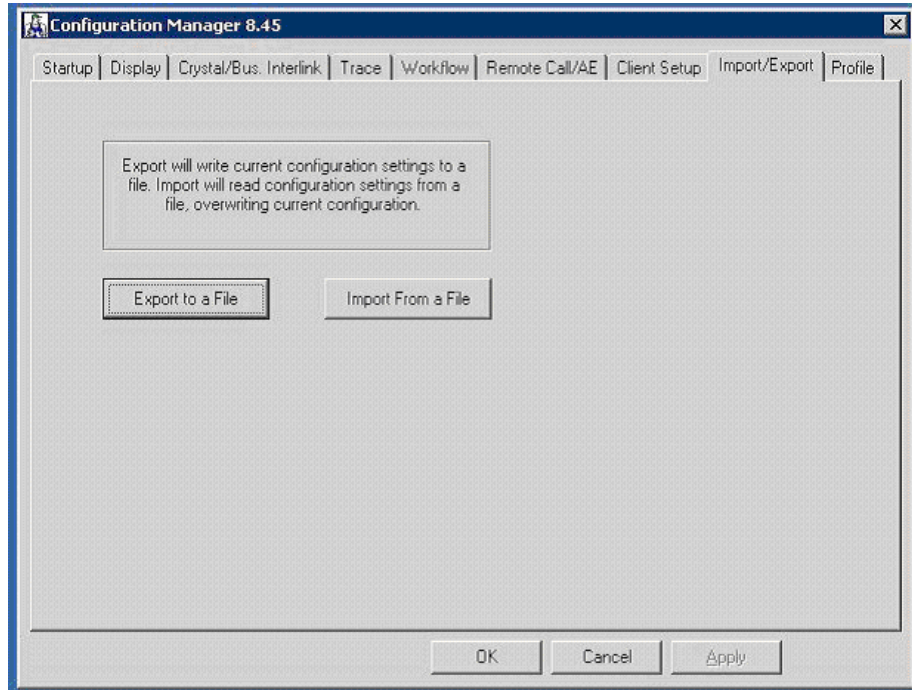
Also, make sure the transaction is active.

- 6 For a PeopleSoft HCM Application user
Create a node transaction for deleting a user's information. Specify the following properties:



Also, make sure the transaction is active.

- 7 For a PeopleSoft HCM Application user
Generate the `pstools.properties` file for the PeopleSoft HCM installation. To do so, open the configuration manager in your Peoplesoft Installation as shown below:



Export the configuration to a file and save the file as `pstools.properties`. Place this file in the Select Identity home directory where other configuration file for the connector are kept.

3 Uninstalling the Connector

If you want to uninstall PeopleSoft connector from Select Identity, perform the following steps:

- Remove all resource dependencies.
- Delete the connector from OVSI.
- Delete the connector from application server.
- Uninstall the agent.

See *HP OpenView Select Identity Connector Deployment Guide* for information on deleting the connector from OVSI and application server.

Uninstalling the Agent

Perform the following to delete the PeopleSoft agent (`PeopleSoftAgent.war`) from WebLogic:

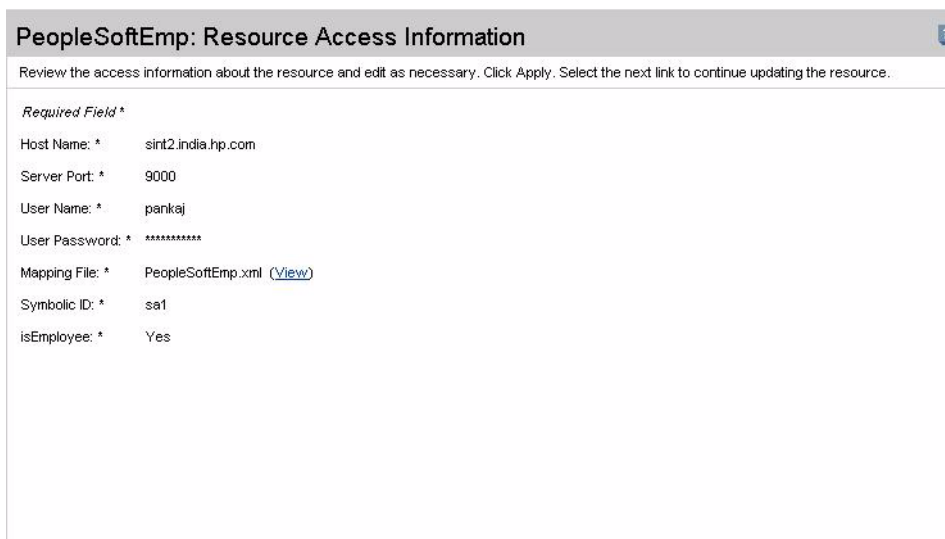
- 1 Log on to the WebLogic Server Console in the OVSI domain.
- 2 Expand the Deployments folder on the left pane, and then double click on **Web Application Modules**. The right pane of the console displays a table showing all the deployed web application modules. Click the delete icon next to the web application that you want to uninstall.
- 3 Click the delete icon next to the web application (`PeopleSoftAgent.war`) that you want to uninstall.
- 4 Click **Yes** to confirm the deletion.
- 5 Click **Continue**.

A Sample Images

This chapter illustrates some sample Images of OVSI when PeopleSoft connector in deployed on it.

- OVSI 4.0 displays the Resource Access Information page in the following format, when a PeopleSoft resource is deployed on it.

For PeopleSoft Employee:



PeopleSoftEmp: Resource Access Information ?

Review the access information about the resource and edit as necessary. Click Apply. Select the next link to continue updating the resource.

Required Field *	
Host Name: *	sint2.india.hp.com
Server Port: *	9000
User Name: *	pankaj
User Password: *	*****
Mapping File: *	PeopleSoftEmp.xml (View)
Symbolic ID: *	sa1
isEmployee: *	Yes

For PeopleSoft Application User:

PeopleSoftAppUser: Resource Access Information

Review the access information about the resource and edit as necessary. Click Apply. Select the next link to continue updating the resource.

*Required Field **

Host Name: * sint2.india.hp.com

Server Port: * 9000

User Name: * pankaj

User Password: * *****

Mapping File: * PeopleSoftUsr.xml ([View](#))

Symbolic ID: * sa1

isEmployee: * no

- OVSI 4.0 displays the View Attribute page in the following format, when a PeopleSoft resource is deployed on it and resource attributes are mapped to HP OVSI 4.0.

For PeopleSoft Employee:

PeopleSoftEmp: Resource Attribute Mapping

Review the attribute mapping and edit as necessary. Click Apply.

Resource Attribute	↓	Attribute	Sync In	Sync Out
Addr1		Addr1	true	true
Addr2		Addr2	true	true
BASE_LANGUAGE_CD		BASE_LANGUAGE_CD	true	true
BIRTHCOUNTRY		BIRTHCOUNTRY	true	true
BIRTHDATE			true	true
BUSINESS_UNIT			true	true
BusAddr1			true	true
BusAddr2			true	true
BusCity			true	true
BusCountry			true	true
BusZip			true	true
COMPANY			true	true
Cell			true	true

For PeopleSoft Application User:

PeopleSoftAppUser: Resource Attribute Mapping				
Review the attribute mapping and edit as necessary. Click Apply.				
Resource Attribute	↓	Attribute	Sync In	Sync Out
AlternateUserID			true	true
BlbEmail			true	true
BusEmail			true	true
CurrencyCode		CurrencyCode	true	true
Description			true	true
EFFDT_FROM			true	true
EFFDT_TO			true	true
EMAILID			true	true
EMAILTYPE			true	true
EMPLID			true	true
HomeEmail			true	true
LASTUPDOPRID			true	true
Language		Language	true	true

- OVSI 3.3.1 displays the Resource Access Information page in the following format, when a PeopleSoft resource is deployed on it.

For PeopleSoft Employee:

Resource Access Information	
* Resource Name:	PeopleSoftConnector
* Host Name:	sint2.india.hp.com
* Server Port:	9000
* User Name:	PS
* User Password:	**
* Mapping File:	PeopleSoftEmp.xml
* Symbolic ID:	sa1
* isEmployee:	Yes

For PeopleSoft Application User:

Resource Access Information	
* Resource Name:	PeopleSoftUser
* Host Name:	15.70.182.125
* Server Port:	9000
* User Name:	PS
* User Password:	**
* Mapping File:	PeopleSoftUser.xml
* Symbolic ID:	sa1
* isEmployee:	No

- OVSI 3.3.1 displays the View Attribute page in the following format, when a PeopleSoft resource is deployed on it and resource attributes are mapped to HP OVSI 3.3.1.

For PeopleSoft Employee:

Resource Name=PeopleSoftConnector				
<< Page 1 of 1 >>				Total Records:38
Name	Min Length	Max Length	Attribute Mapped To	Authoritative
Addr1	1	128	Addr1	N
Addr2	1	128	Addr2	N
BASE_LANGUAGE_CD	1	64	Language	N
BIRTHCOUNTRY	1	64	Country	N
BIRTHDATE	1	64	Birthdate	N
BusAddr1	1	128	BusAttr1	N
BusAddr2	1	128	BusAddr2	N
BusCity	1	64	BusCity	N
BusCountry	1	64	BusCountry	N
BUSINESS_UNIT	1	64	CostCenter	N
BusZip	1	64	BusZip	N
Cell	1	64	PhMobile	N
City	1	64	City	N
COMPANY	1	128	Company	N
Country	1	64		N
DEPTID	1	64	DEPTID	N
Effective Date	1	64	Effective Date	N
EMAIL_ADDR	1	64	Email	N
EMPL_STATUS	1	64	EMPL_STATUS	N
EMPL_STATUS_REASON	1	64	EMP_STATUS_REASON	N
EMPLID	1	64	EmployeeID	N
Fax	1	64	Fax	N

For PeopleSoft Application User:

Resource Name=PeopleSoftUser				
<< Page 1 of 1 >>				Total Records:26
Name	Min Length	Max Length	Attribute Mapped To	Authoritative
AlternateUserID	1	64	AlternateUserID	N
BbEmail	1	64	BbEmail	N
BusEmail	1	64	BusEmail	N
CurrencyCode	1	64	CurrencyCode	N
Description	1	64	Description	N
EFFDT_FROM	1	64	EFFDT_FROM	N
EFFDT_TO	1	64	EFFDT_TO	N
EMAILID	1	64	Email	N
EMAILTYPE	1	64	EMAILTYPE	N
EMPLID	1	64	EmployeeID	N
HomeEmail	1	64	HomeEmail	N
Language	1	64	Language	N
LASTUPDOPRID	1	64	LASTUPDOPRID	N
NavigatorHomePage	1	64	NavigatorHomePage	N
Password	1	64	Password	N
PeopleSoftUser_ENTITLEMENTS	1	255	PeopleSoftUser_ENTITLEMENTS	Y
PeopleSoftUser_KEY	1	255	PeopleSoftUser_KEY	Y
PrimaryEmail	1	64	PrimaryEmail	N
PrimaryPermissionList	1	64	PrimaryPermissionList	N
ProcessProfile	1	64	ProcessProfile	N
RowSecurityPermissionList	1	64	RowSecurityPermissionList	N
SupervisingUserID	1	64	SupervisingUserID	N
UserDescription	1	64	UserDescription	N
UserIDAlias	1	64	UserIDAlias	N
UserName	1	64	UserName	N