

HP OpenView Reporter

for the Windows operating system

Software Version: A.03.70

Reporter OVO Windows Read Me

Document Release Date: March 2006



Table of Contents

1	Running Reporter 3.70 and OVOW 7.5 on separate systems	3
	Configuring the OVOW 7.5 System.....	3
	Stop Reporter Service	3
	Configure IIS settings.....	5
	Configure DSN settings.....	7
	Configuring the Reporter System.....	13
	Install additional reports.....	13
	Configure DSN Settings	13
	Configuring Reporter to use the newly added DSN	18
	Configure the OVOW Settings for Reporter	19
	Additional steps	20
2	Reporter 3.70 and OVO in Same Cluster.....	24

1 Running Reporter and OVOW 7.5 on separate systems

It is possible to integrate Reporter with remote OVOW 7.5 to collect managed node information and generate OVOW reports.

▶ This configuration is not supported with OVOW 7.21 (or older versions of the OVOW) and Reporter 3.5 (or older version of Reporter.)

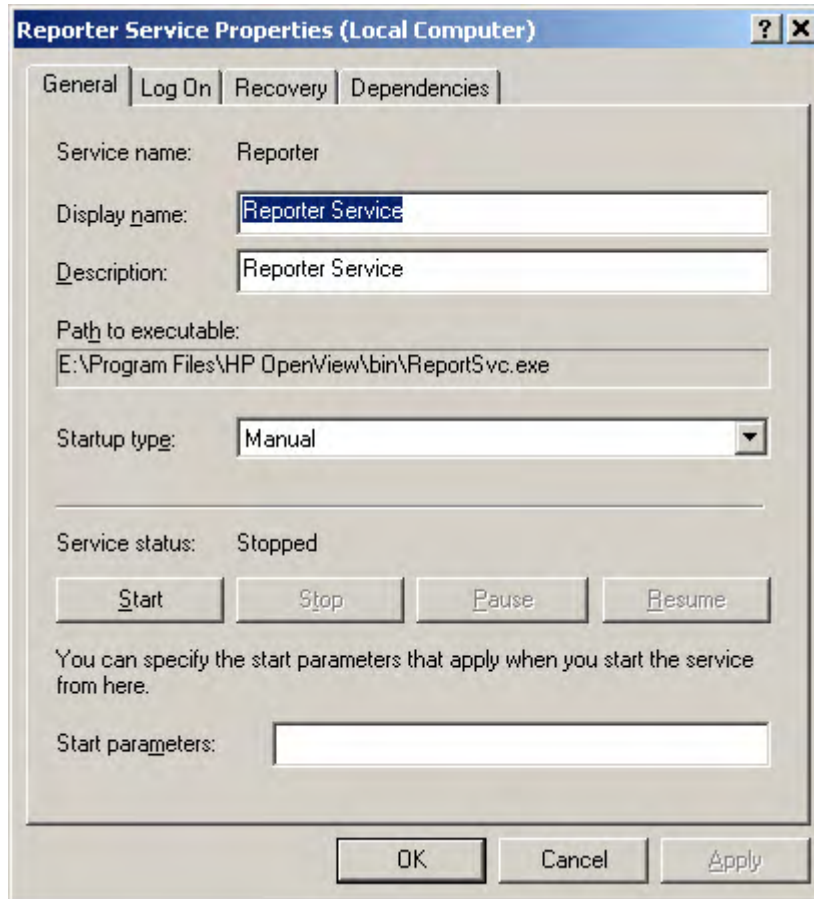
Follow the steps mentioned in the following sections to configure the OVOW and Reporter systems.

Configuring the OVOW 7.5 System

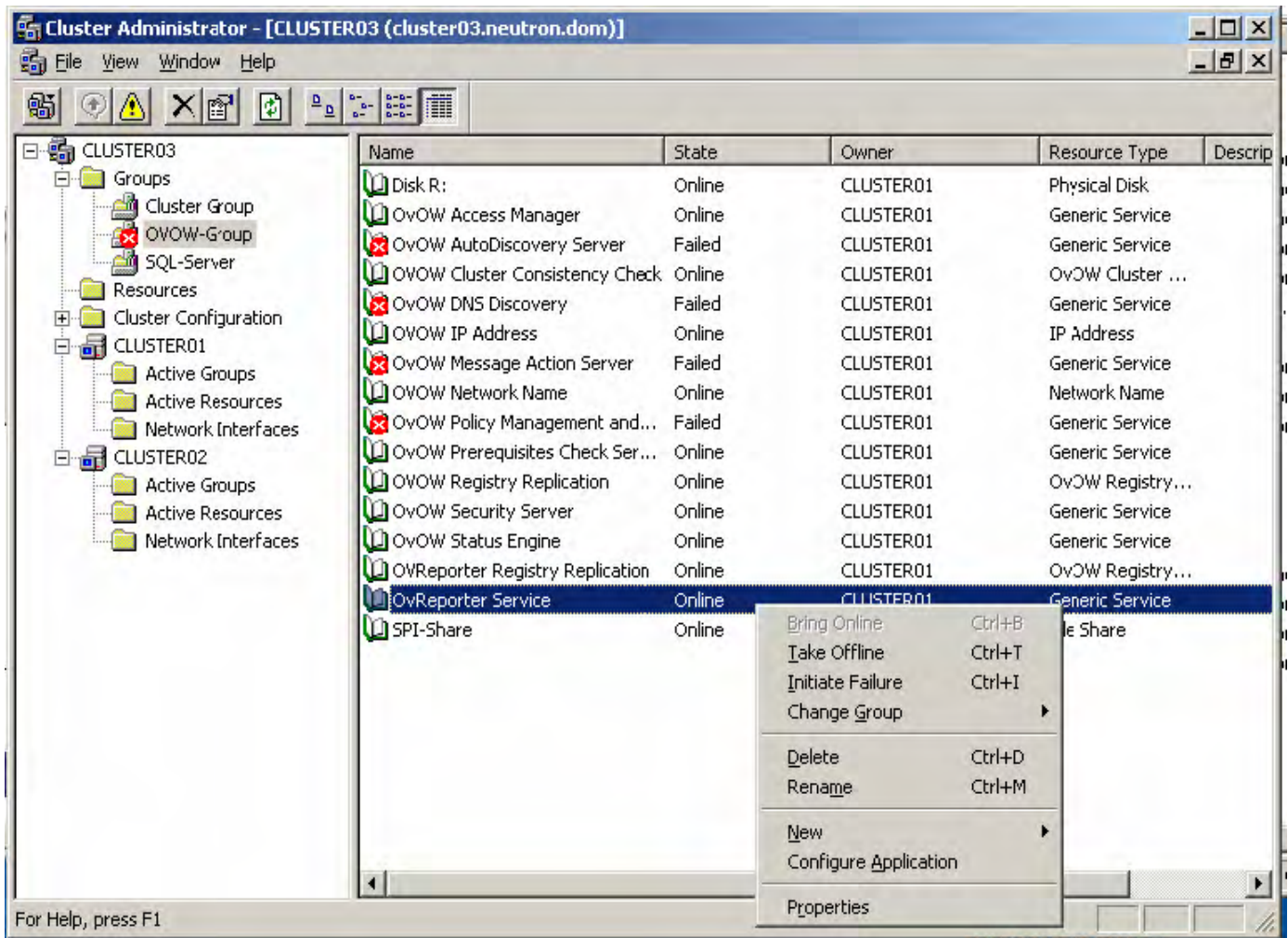
Stop Reporter Service

If OVOW 7.5 is not installed in a cluster follow the steps below to stop Reporter Service:

- 1 Select the Reporter service using the Start menu, select **Settings > Control Panel > Administrative tools > Services**
- 1 From the Startup type drop-down list box, select Manual.



- 2 Click Stop to stop the Reporter Service.
If OVOW 7.5 is installed in a cluster follow the steps below to stop Reporter Service:
- 3 From start menu select **Settings > Control Panel > Administrator tools > Cluster Administrator**.
- 4 In 'Cluster Administrator' console, select '<Cluster Name>\Groups\<your OVOW-Group name>'
- 5 Right Click on 'OvReporter Service'

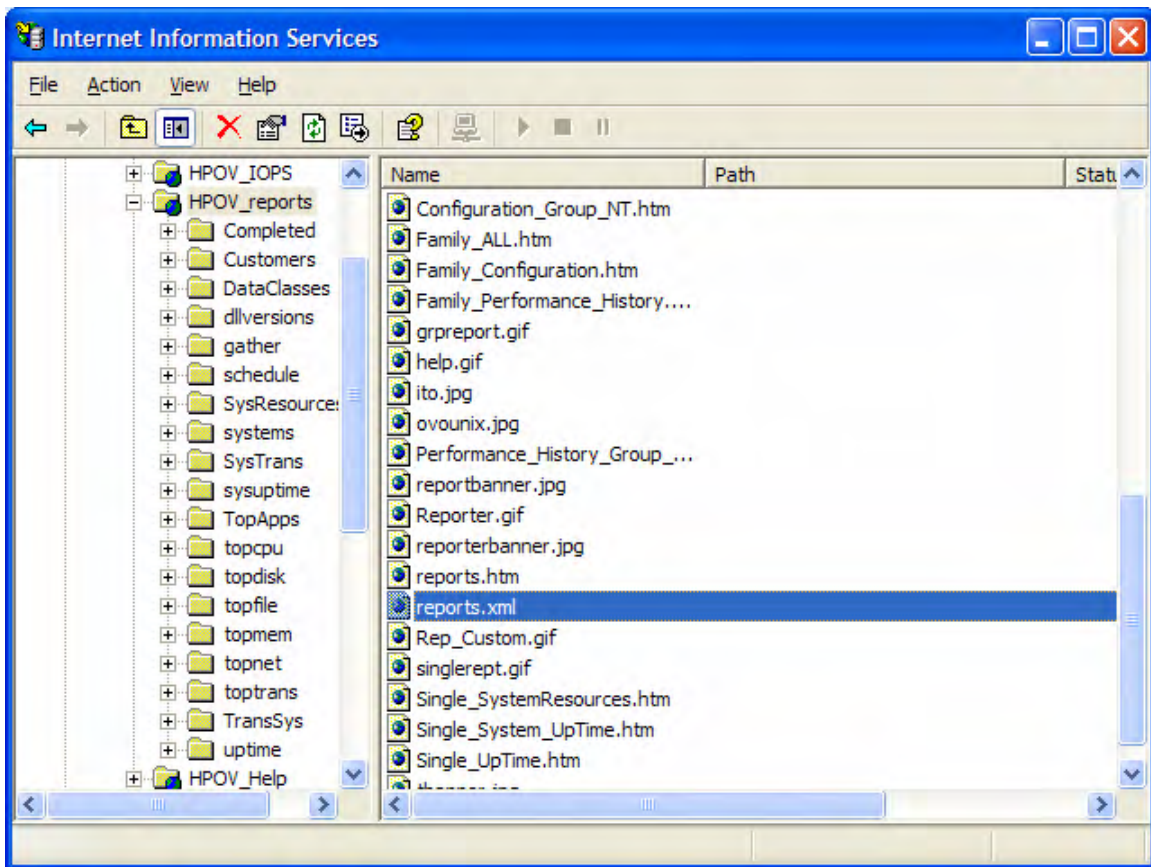


- 6 Click 'Delete'.
Note: If you only take the resource offline, the entire group will be considered 'Partially offline' and the OVOW GUI will report 'The Operations Management Server has gone offline'.

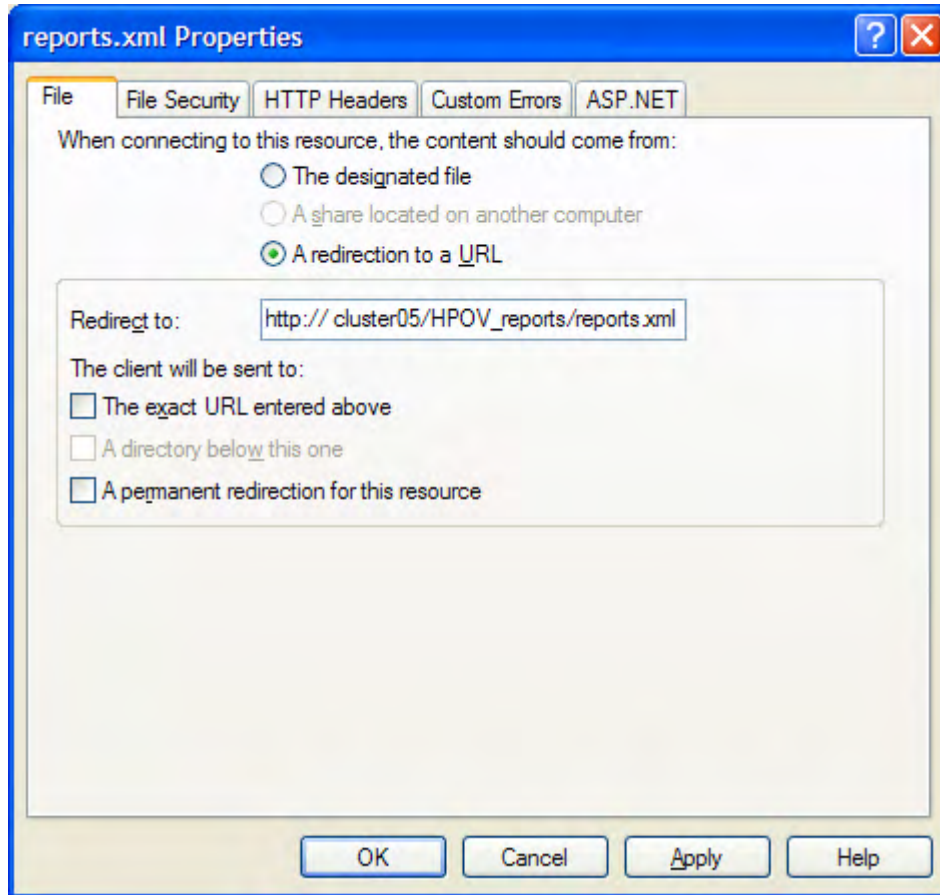
Configure IIS settings

Follow the steps below to configure IIS:

- 1 Close the OVOW 7.5 console
- 2 Open IIS administration console by selecting '**Start-> Settings->Control Panel->AdministrativeTools->Internet Information Services (IIS) Manager**'
- 2 Select 'HPOV_reports' under 'Default Web Site'



- 3 Click on HPOV_reports folder to view the files within it.
- 4 Right click on reports.xml and select Properties
- 5 Click on 'File' tab. Select 'A redirection to a URL' option.



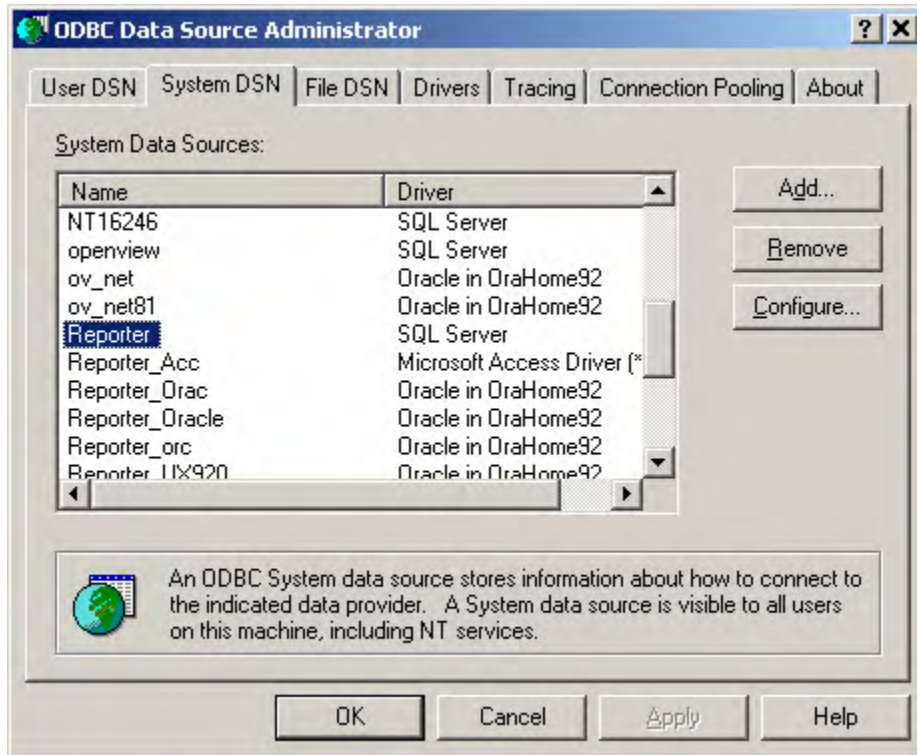
- 6 Enter 'http://<Reporter Server>/HPOV_reports/reports.xml'.
['Reporter Server' should be the IP Address or the machine name where Reporter is installed]

If Reporter is running in a cluster, use the virtual server name for 'Reporter Server'

- ▶ If OVOW 7.5 is installed in a cluster, the above steps have to be executed on each of the nodes in the cluster.

Configure DSN settings

- 7 From the Start menu, select 'Settings > Control Panel >Administrative Tools >Data sources (ODBC).
 1. Select 'System DSN' tab. Select 'Reporter' datasource and click on 'Configure...' button



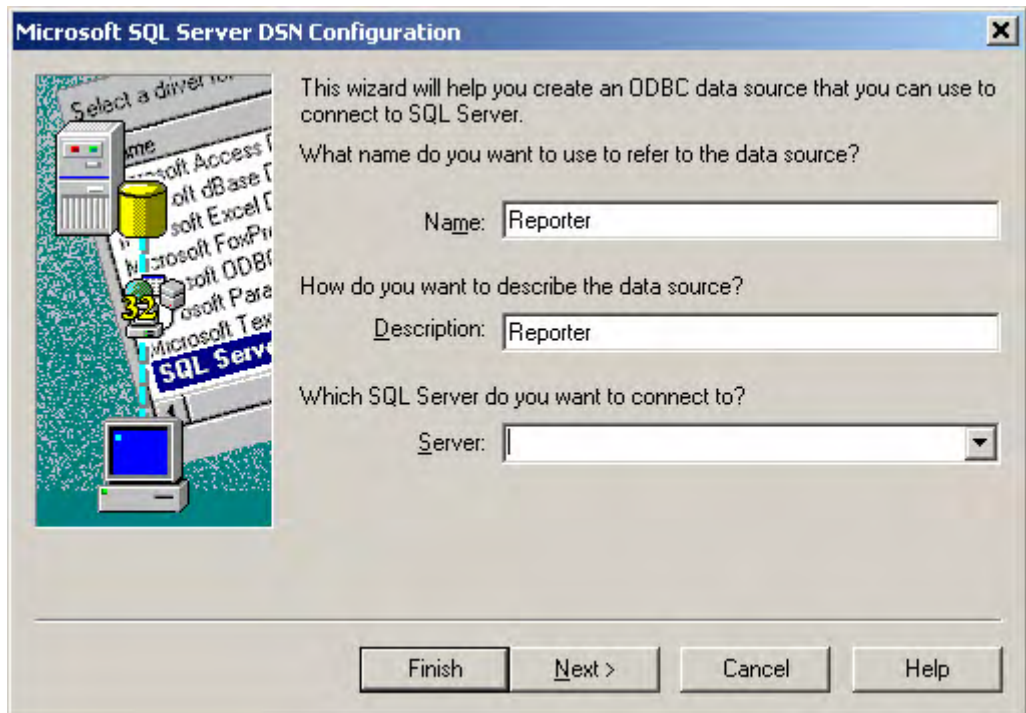
2 Enter

Name: Reporter

Description: Reporter

Server: <SQL Server Machine name>\<SQL Server Instance used by Reporter application>

[If the SQL Server is installed in a cluster, the virtual server name should be entered as SQL Server Machine name.]

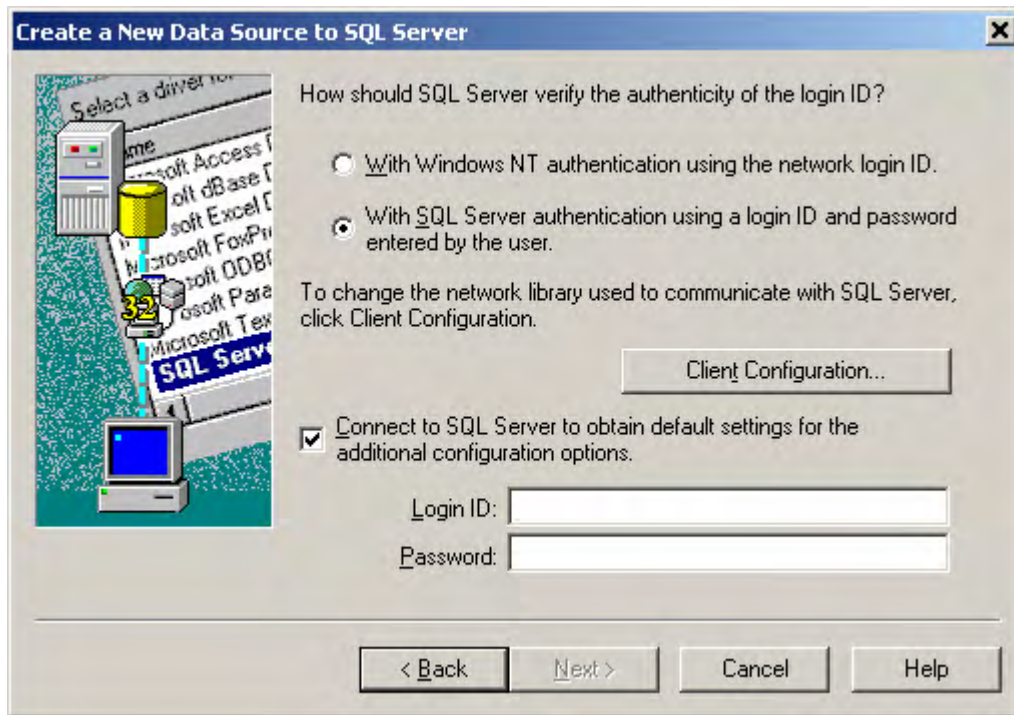


- 3 Click on Next.
- 4 With SQL Server authentication using a login ID and password entered by user.

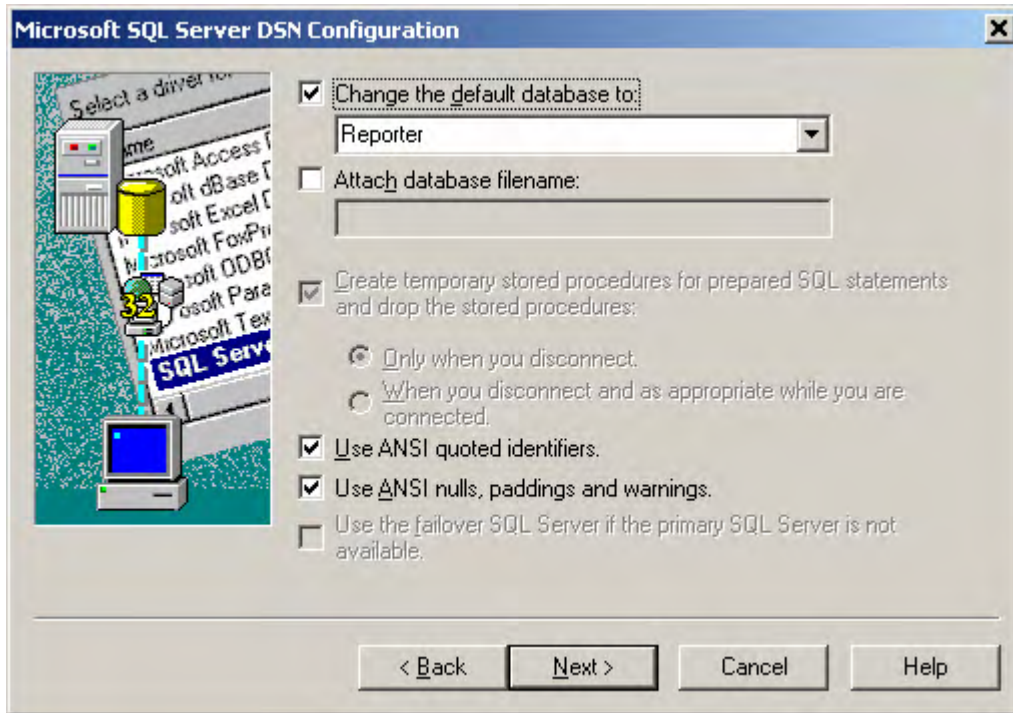
Also check Connect to SQL Server to obtain default settings for the additional configuration options.

Enter Login ID: openview

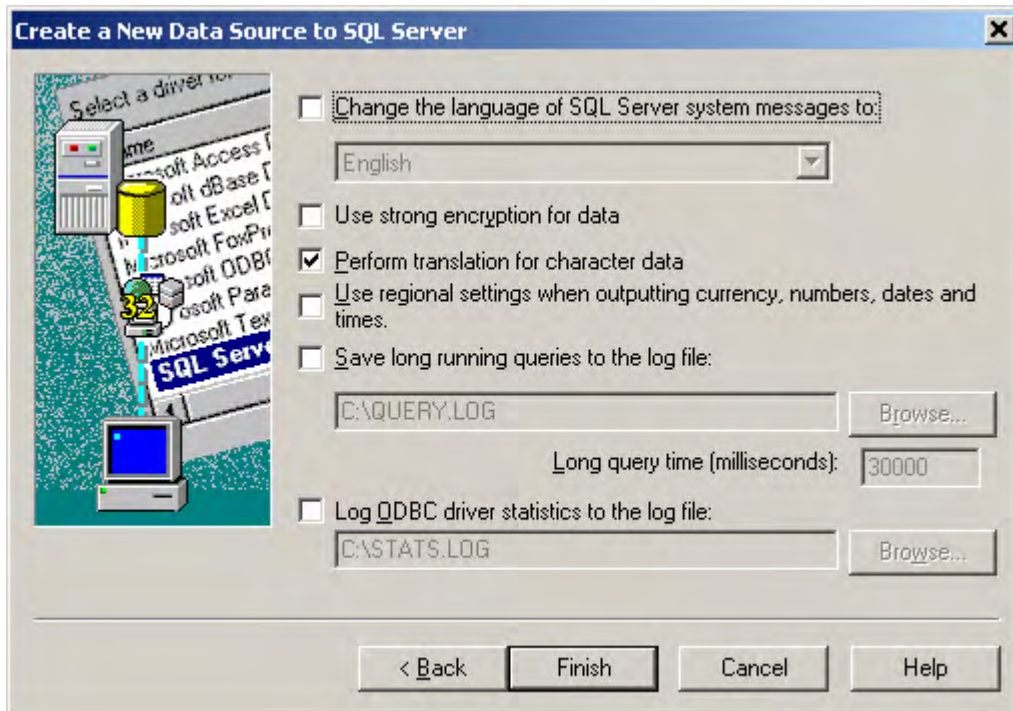
Password: openview



- 5 Click on Next.
- 6 Select Change the default database to: and choose Reporter from the drop down list box.
Select Use ANSI quoted identifiers.
Select Use ANSI nulls, paddings and warnings.

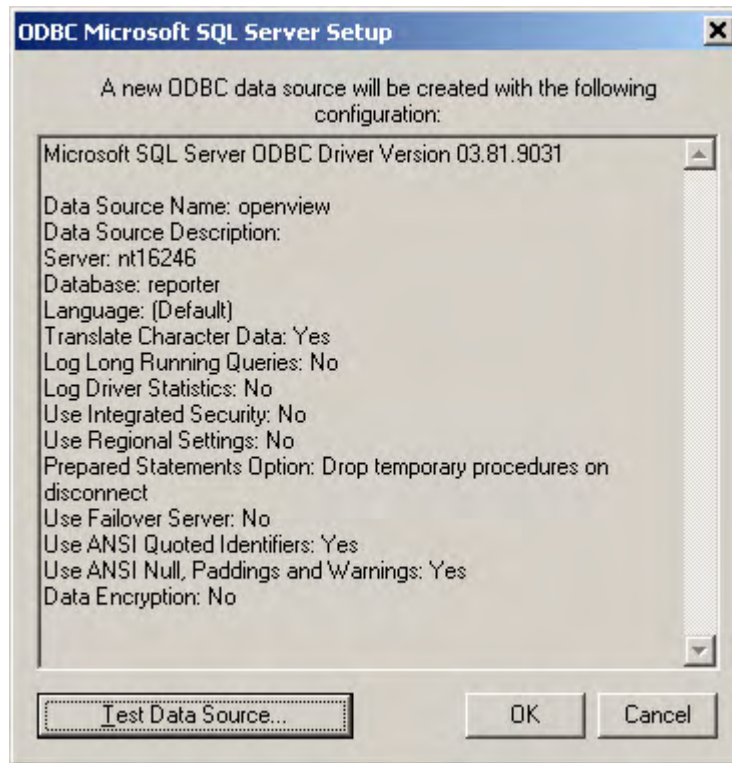


- 7 Click on Next.
- 8 Only set Perform translation for character data.



- 9 Click on Finish.

10 Click on Test Data Source to verify that the connection is working.



11 Click on OK.



If OVOW 7.5 is installed in a cluster, the above steps have to be executed on each of the nodes in the cluster.

Configuring the Reporter System

Install additional reports

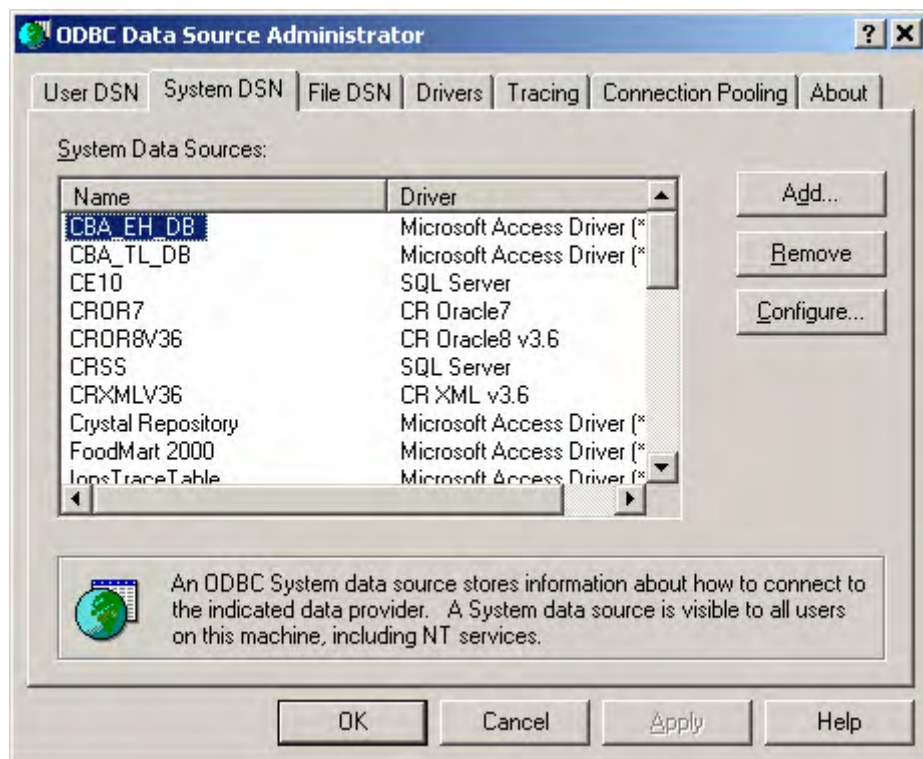
Install the OVOW packages from the OVOW CD containing the reports you want to use.

You may find the following OVOW packages in OVOW CD:

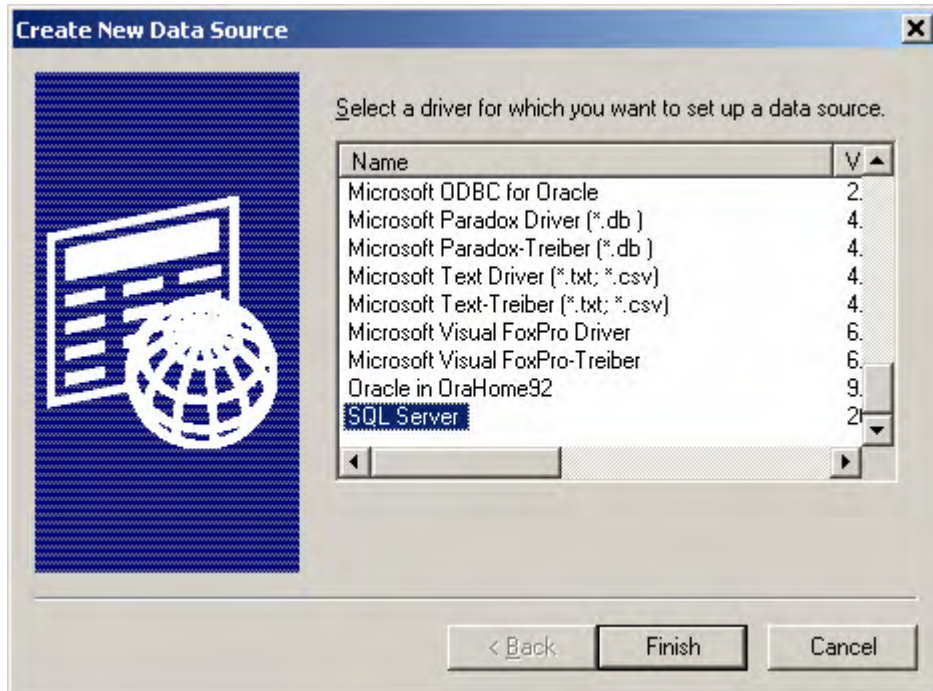
- a Packages\SPIs Reports Packages\WINOSSPI-Reporter.msi
- b Packages\FoundationCore\OVServiceReports\HP OpenView operations for Windows Service Reports.msi

Configure DSN Settings

- 1 From the Start menu, select Settings > Control Panel >Administrative Tools >Data sources (ODBC)
- 2 Select System DSN tab and click on Add... button.



- 3 Select SQL Server



4 Click on Finish

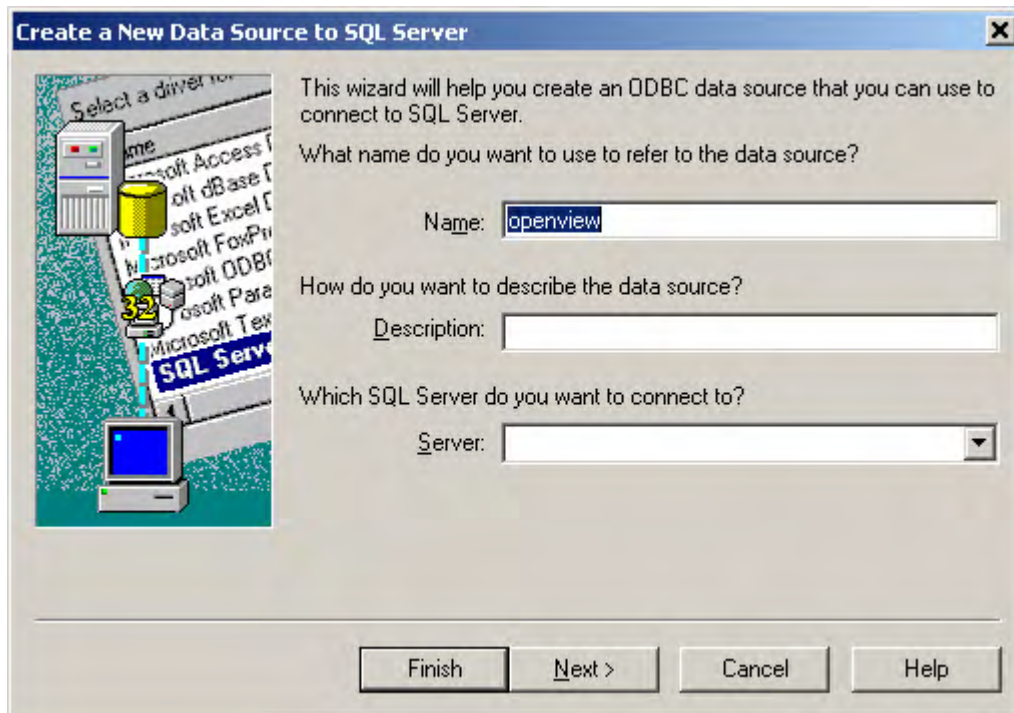
5 Enter

Name: openview

Description: OVOW Management Server

Server: <Name or IP of OVOW server>/OVOPS

[If OVOW Management server is installed in a cluster, the virtual server name or IP should be entered.]

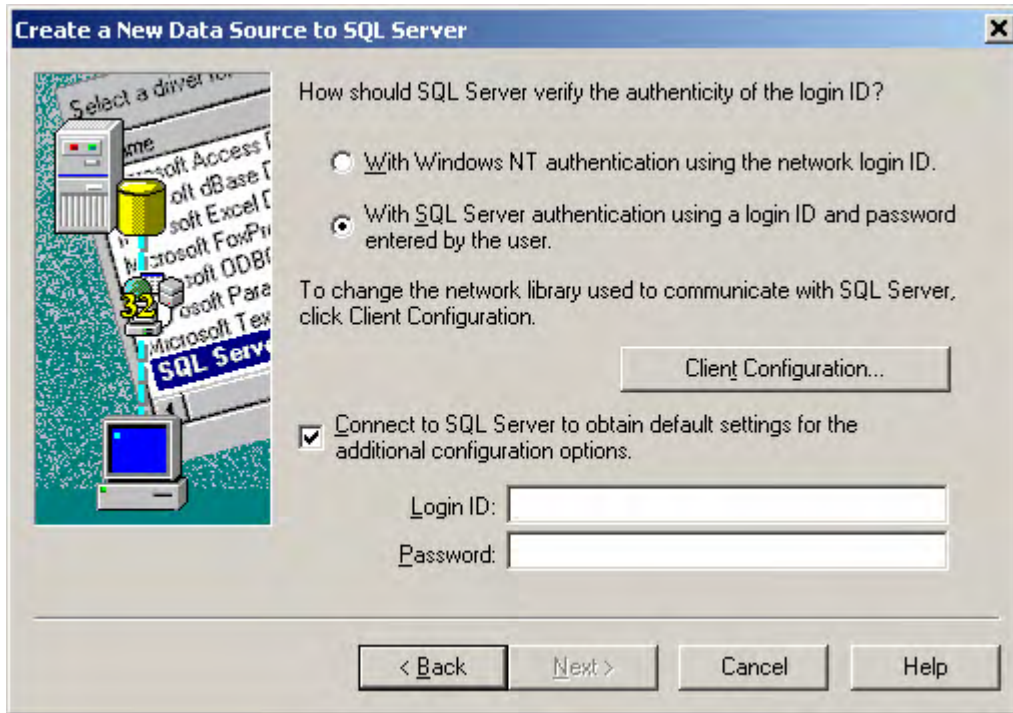


- 6 Click on Next.
- 7 Select With SQL Server authentication using a login ID and password entered by user.

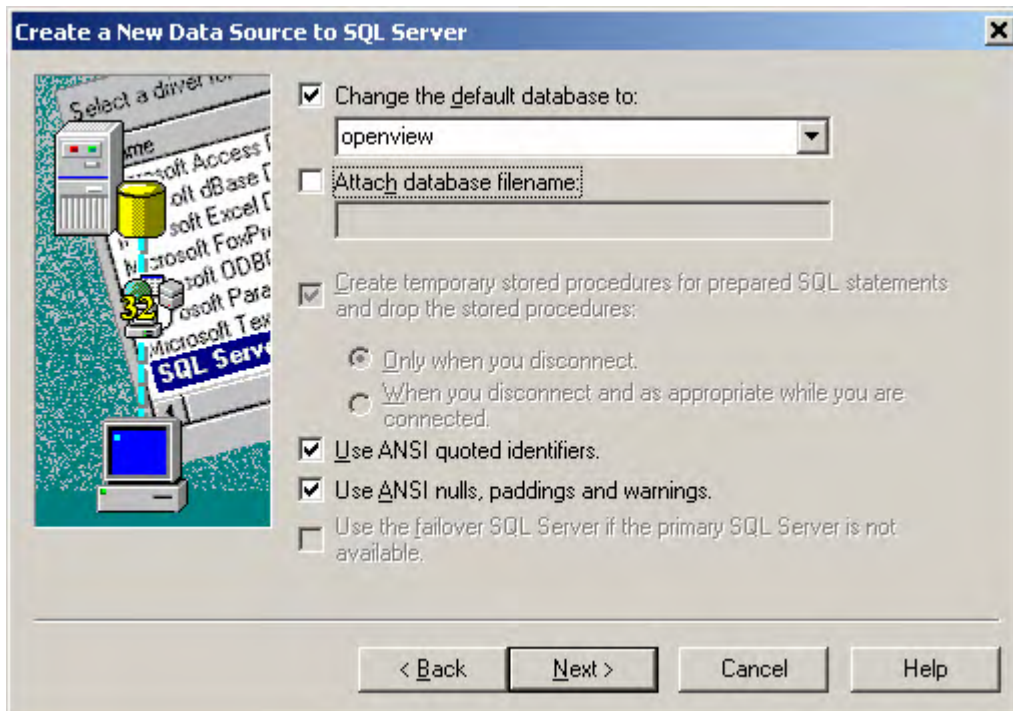
Also check Connect to SQL Server to obtain default settings for the additional configuration options.

Enter Login ID: ovdb_user

Password: user

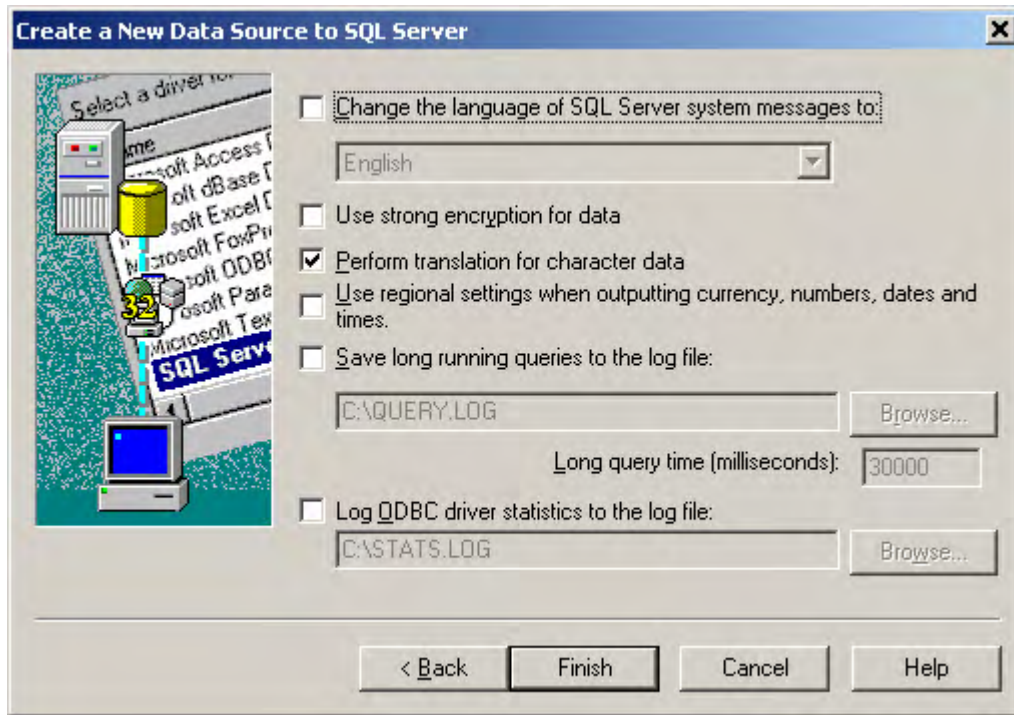


- 8 Click on Next.
- 9 Select Change the default database to: and choose Openview from the drop down list box.
- 10 Select Use ANSI quoted identifiers.
- 11 Select Use ANSI nulls, paddings and warnings.



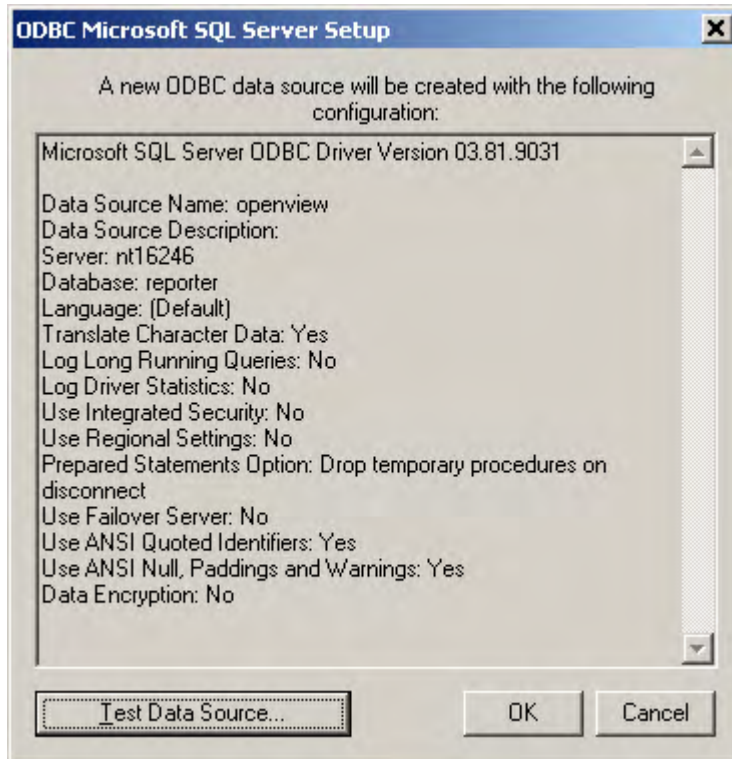
12 Click on Next.

13 Only set Perform translation for character data.



14 Click on Finish.

15 Click on Test Data Source to verify that the connection is working.



16 Click on OK.

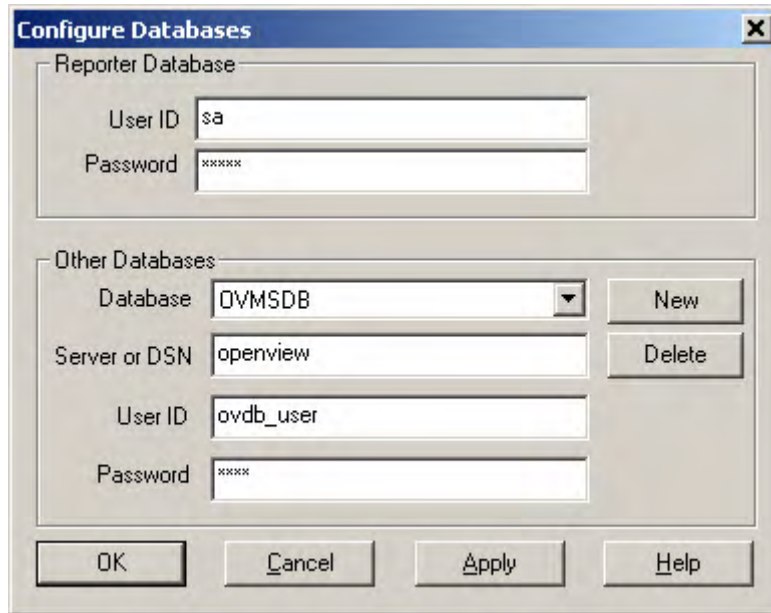


If Reporter is installed in a cluster, the above steps have to be executed on each of the nodes in the cluster.

Configuring Reporter to use the newly added DSN

After creating the DSN openview successfully please configure Reporter GUI to. Use the DSN as specified in the steps below:

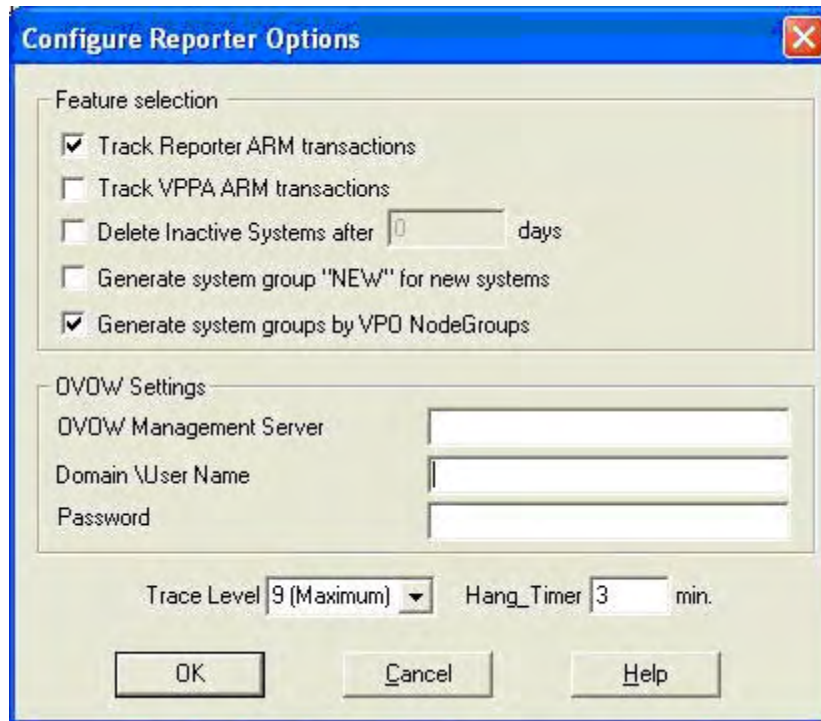
- 1 Select Reporter GUI > File > Configure > Databases



2. In the dialog do not change User ID and Password in Reporter Database section
3. In Other Databases section
Select Database: OVMSDB (If it is not found in the drop down list, use the 'New' button)
Server or DSN: openview
User ID: ovdb_user
Password: user
Click on Apply

Configure the OVOW Settings for Reporter

- 1 Select Reporter GUI > File > Configure > Options and specify the OVOW Settings parameters.
- 2 Enter the OVOW system name as OVOW Management Server, a user name as Domain \User Name (with or without domain) and the password as Password in the OVOW Settings.



- 3 Select Reporter GUI > Left Pane > Schedule and then right click and select Add Schedule to add Discovery_Neutron to reporter scheduler.



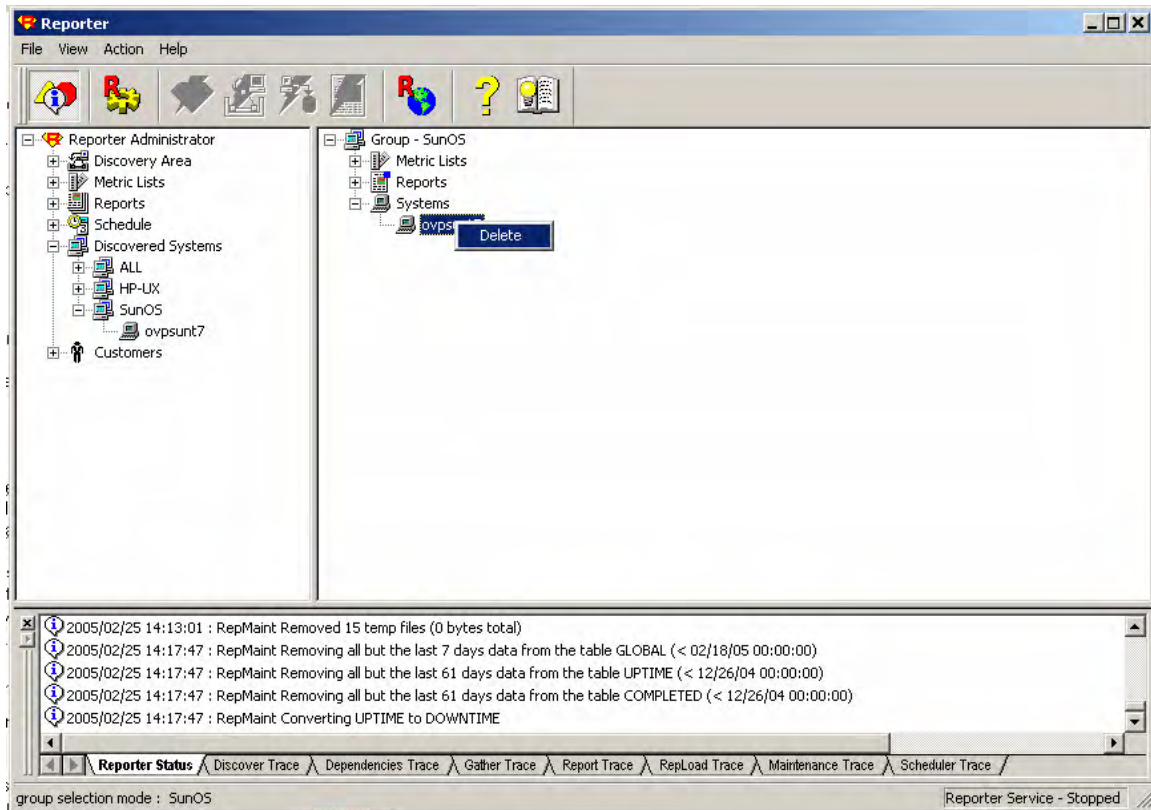
The User entered in the OVOW Settings panel must be part of the Administrators, HP-OVE-ADMINS, or HP-OVE-OPERATORS user group on the OVOW management server system.

Additional steps

Depending on the purpose for which Reporter is used, few configuration changes need to be done at the machine where Reporter is running:

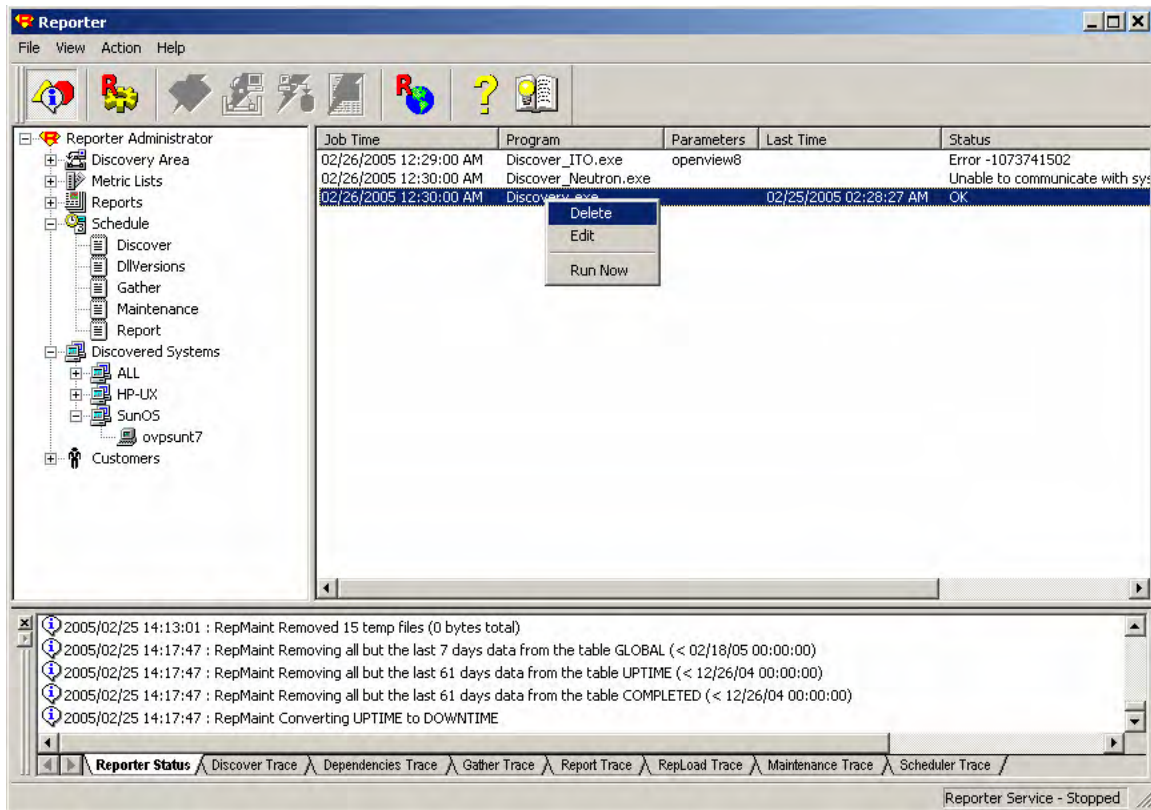
Case (1): If Reporter is used only to report on nodes managed by OVOW please do the following steps:

- 1 Remove all the systems discovered by Reporter. Open Reporter GUI and select Reporter Administrator->Discovered Systems-><ALL. Press 'F5' or select 'View->Refresh'. Select the systems that appear on the right pane.
- 2 Right click on the systems and select Delete.
- 3 Remove all the systems discovered by Reporter. Open Reporter GUI and.



- 4 Also access Reporter Administrator->Schedule->Discover. Press 'F5' or Select View->Refresh
- 5 On the right pane, select the job with program name as Discovery.exe
- 6 Right click and select Delete

After the next discovery the nodes managed by OVOW will appear in the Reporter GUI and will be used to generate the reports.



Case (2): If Reporter is used to report on nodes discovered by Reporter [using Discovery.exe] and on nodes managed by OVOW [delivered by Discover_Neutron.exe] and there are no clustered servers in the environment then please follow the steps listed below:

- a Open Report GUI. Select Reporter Administrator > Schedule > Discover.
- b Click on F5 or select View > Refresh.
- c Ensure that both Discover_Neutron.exe and Discovery.exe are schedule.

[Look for these programs in the list of scheduled activities under Reporter Administrator->Schedule->Discover]

Case (3): If Reporter is used to report on nodes discovered by Reporter [using Discovery.exe] and on nodes managed by OVOW [delivered by Discover_Neutron.exe] and there are clustered servers in the environment then please follow the steps listed below:

- a Remove discovery.exe from the list of scheduled activities in Reporter GUI. [as described in steps (d), (e) and (f) under Case (1).]
- b Open Reporter GUI. Select Reporter Administrator->Schedule->Discover. Right Click and select Add schedule.
- c In Add Schedule Entry dialog do the following:

- Job Date : enter the date on which Discovery has to be scheduled
- Job Time: enter the time when the scheduled program should start execution
- Program Name: From the list box select Discovery
- Parameters: Enter -b "<filename>". <Filename> refers to a text file that has list of nodes that need to be discovered.
- Job Reset: Select Day from list box
- Run Time: Enter an integer in minutes that indicates the expected time that Discovery would take to complete.

d Ensure that Discover_Neutron is scheduled.

[Look for Discover_Neutron in the list of scheduled activities under Reporter Administrator->Schedule->Discover]

2 Reporter 3.70 and OVO in Same Cluster

OVO and Reporter must be in the same cluster group if you want to install them on the same cluster. On a same cluster, you must install OVO before installing Reporter.



The OVO installation fails if you install Reporter before installing OVO in the same cluster.