

Installing Mercury Change Control Management™

Documentation Supplement
Version 1.0

Document Release Date: March 15, 2006

MERCURY™

Installing Mercury Change Control Management, Version 1.0

This manual, and the accompanying software and other documentation, is protected by U.S. and international copyright laws, and may be used only in accordance with the accompanying license agreement. Features of the software, and of other products and services of Mercury Interactive Corporation, may be covered by one or more of the following patents: United States: 5,511,185; 5,657,438; 5,701,139; 5,870,559; 5,958,008; 5,974,572; 6,137,782; 6,138,157; 6,144,962; 6,205,122; 6,237,006; 6,341,310; 6,360,332; 6,449,739; 6,470,383; 6,477,483; 6,549,944; 6,560,564; 6,564,342; 6,587,969; 6,631,408; 6,631,411; 6,633,912; 6,694,288; 6,738,813; 6,738,933; 6,754,701; 6,792,460 and 6,810,494. Australia: 763468 and 762554. Other patents pending. All rights reserved.

Mercury, Mercury Interactive, the Mercury logo, the Mercury Interactive logo, LoadRunner, WinRunner, SiteScope and TestDirector are trademarks of Mercury Interactive Corporation and may be registered in certain jurisdictions. The absence of a trademark from this list does not constitute a waiver of Mercury's intellectual property rights concerning that trademark.

All other company, brand and product names may be trademarks or registered trademarks of their respective holders. Mercury disclaims any responsibility for specifying which marks are owned by which companies or which organizations.

Mercury provides links to external third-party Web sites to help you find supplemental information. Site content and availability may change without notice. Mercury makes no representations or warranties whatsoever as to site content or availability.

Mercury Interactive Corporation
379 North Whisman Road
Mountain View, CA 94043
Tel: (650) 603-5200
Toll Free: (800) TEST-911
Customer Support: (877) TEST-HLP
Fax: (650) 603-5300

© 2006 Mercury Interactive Corporation, All rights reserved

If you have any comments or suggestions regarding this document, please send them by e-mail to documentation@mercury.com.

Installing Mercury Change Control Management

This document provides an explanation of the installation and post-installation procedures you must perform in order to work with Mercury Change Control Management. It also describes the Change Control Management system requirements.

This document describes:

- ▶ System Requirements
- ▶ Installation Procedures
- ▶ Post-Installation Procedures

System Requirements

The following table describes the system requirements for working with Change Control Management:

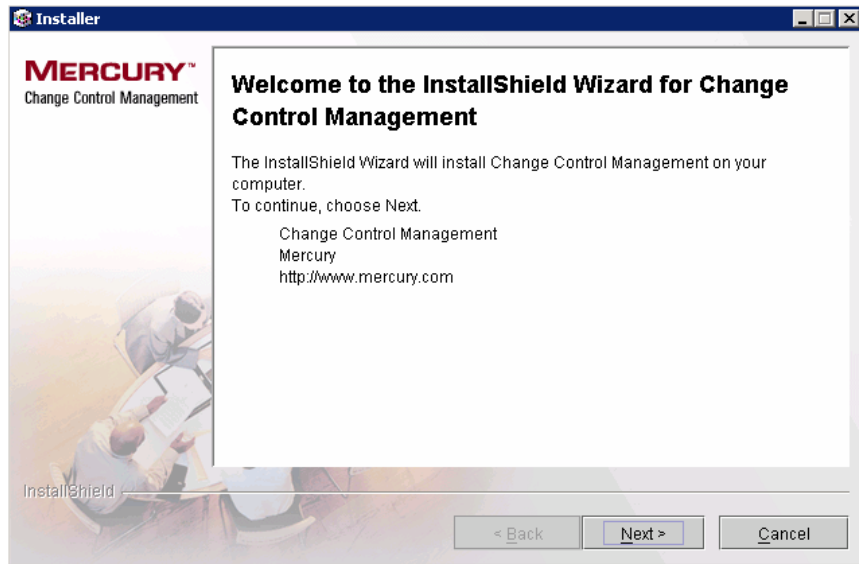
CPU	Windows Pentium 4
Memory (RAM)	Minimum of 2 GB
Free Disk Space	Minimum of 5 GB
Operating System	Windows 2000/2003 Server
Database	Microsoft SQL Server 2000 Enterprise Edition
Mercury Application Mapping (MAM)	Version 3.0 or 6.1 For a full list of system requirements for each of these versions, refer to the Mercury Application Mapping documentation.

Installation Procedures

You install Mercury Change Control Management using the InstallShield Wizard for Change Control Management.

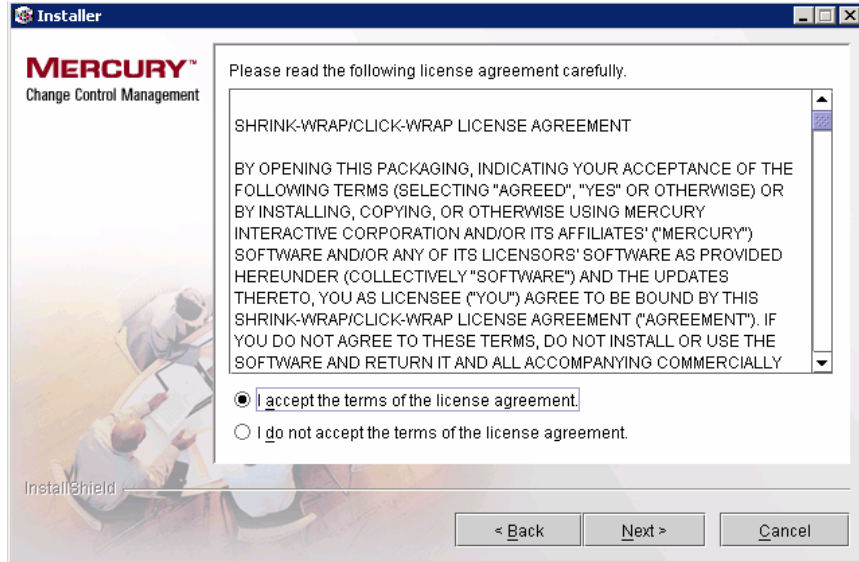
To install Change Control Management:

- 1 Click the **setup.exe** file located in the **disk1** folder of your Mercury Change Control Management CD-ROM. The InstallShield Wizard for Change Control Management opens.



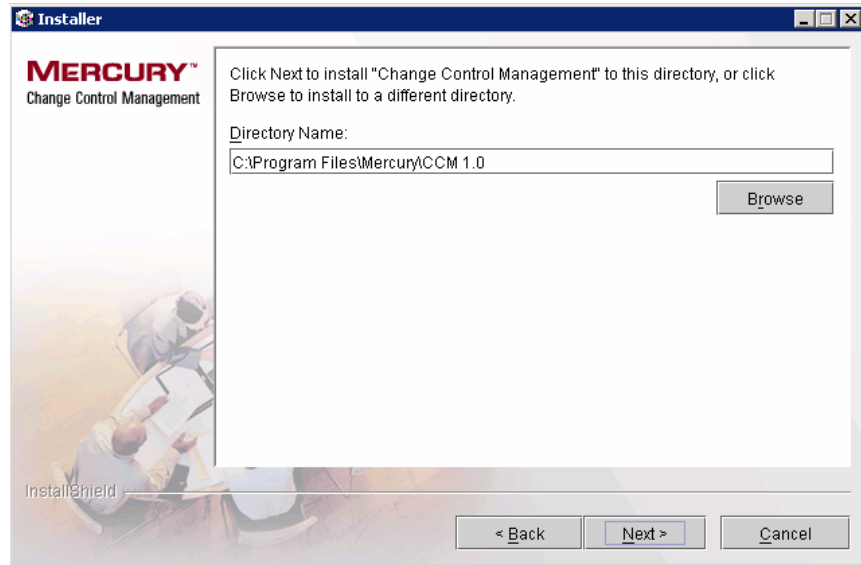
Click **Next**.

2 Accept the terms of the software license agreement that is displayed.



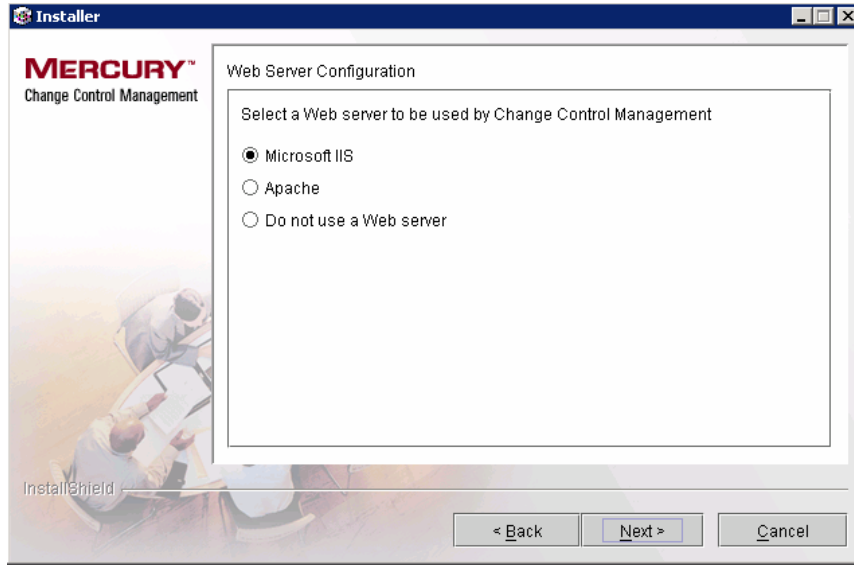
Click **Next**.

- 3 In the following screen, accept the default installation directory or click **Browse** to select a different directory.



Click **Next**.

- 4 In the Web Server Configuration screen, select a Web server—**Microsoft IIS** or **Apache**—to be used by Change Control Management. If you want to work with Change Control Management without a Web server, select the **Do not use a Web server** option.

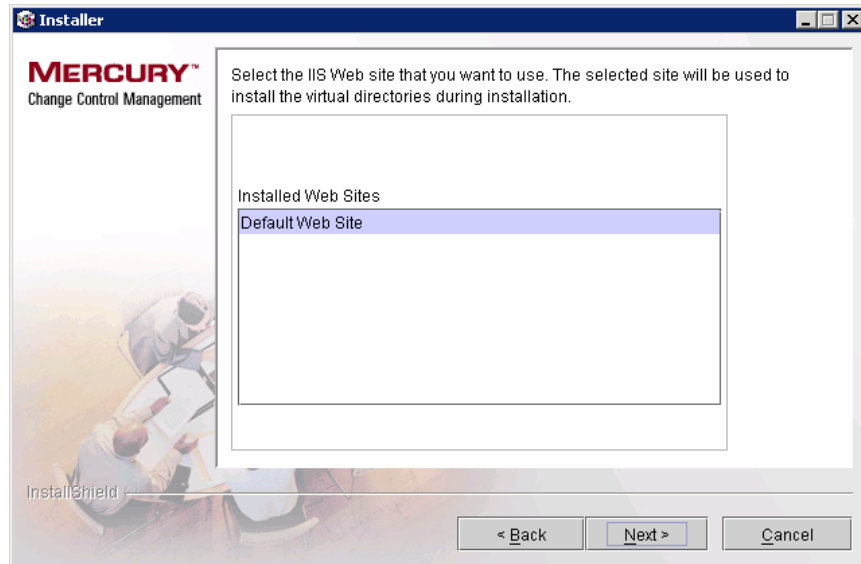


Notes:

- It is assumed that Microsoft IIS is installed on the Change Control Management server machine.
- If you select **Apache**, the Apache Web server is installed on the Change Control Management server machine during Change Control Management installation.
- If you select **Do not use a Web server**, the Tomcat server is used, with a default port of 8080.

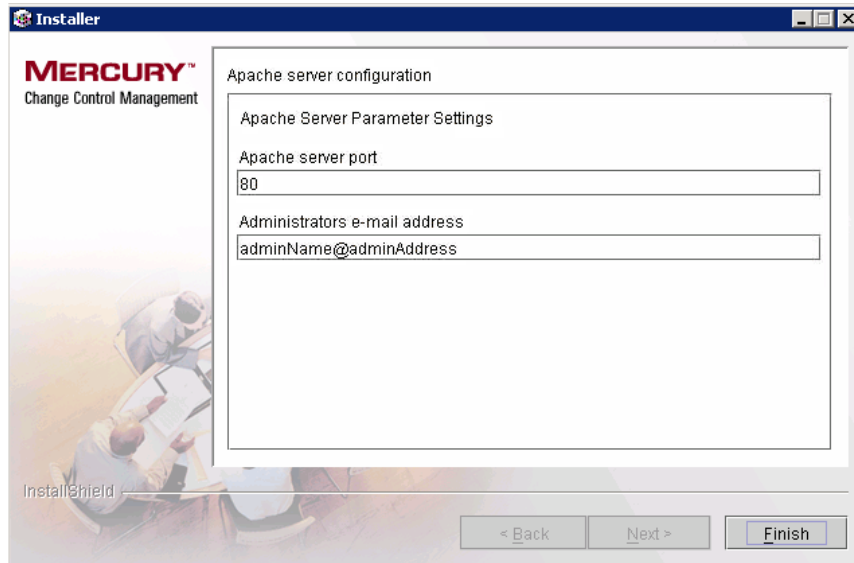
Click **Next**. If you selected **Microsoft IIS**, proceed to step 5. If you selected **Apache**, proceed to step 6. If you selected **Do not use a Web server**, proceed to step 7.

- 5 If you selected Microsoft IIS in Web Server Configuration screen, you are prompted to select the Microsoft IIS Web site from which you want to install the Microsoft IIS Web server virtual directories.



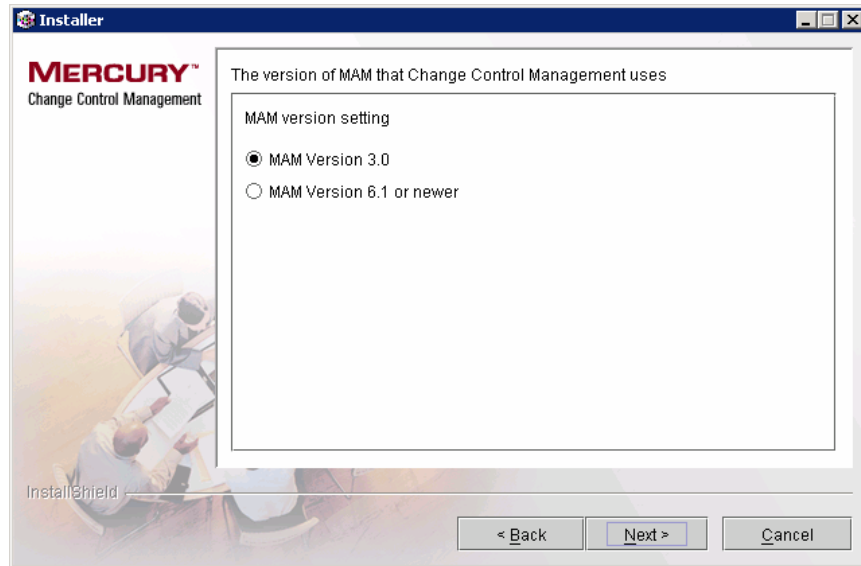
Select the required IIS Web site and click **Next**. Proceed to step 7.

- 6 If you selected Apache in Web Server Configuration screen, you are prompted to enter the Apache server port through which you want the Apache Web server to communicate with the Change Control Management server, as well as the Apache Web server administrator's e-mail address.



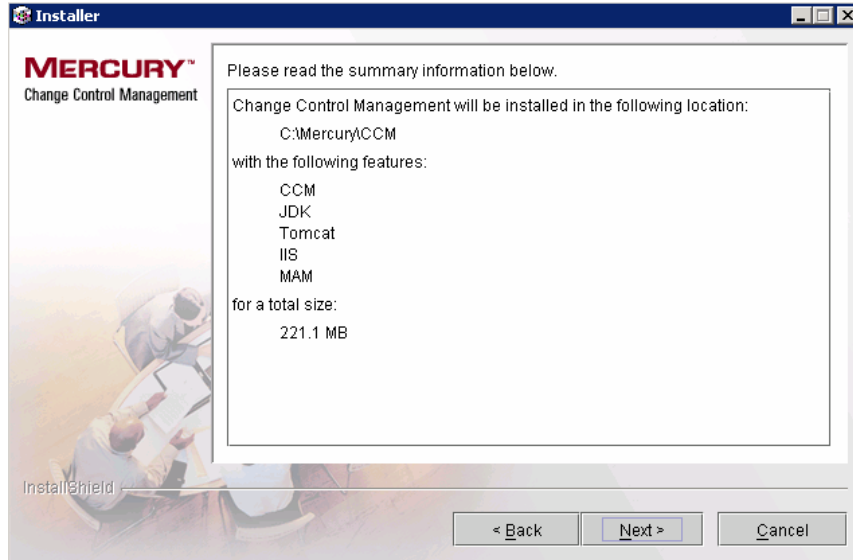
Click **Next**.

- 7 In the following screen, select the version of Mercury Application Management (MAM)—**3.0** or **6.1 or later**—that you want to use with Change Control Management.



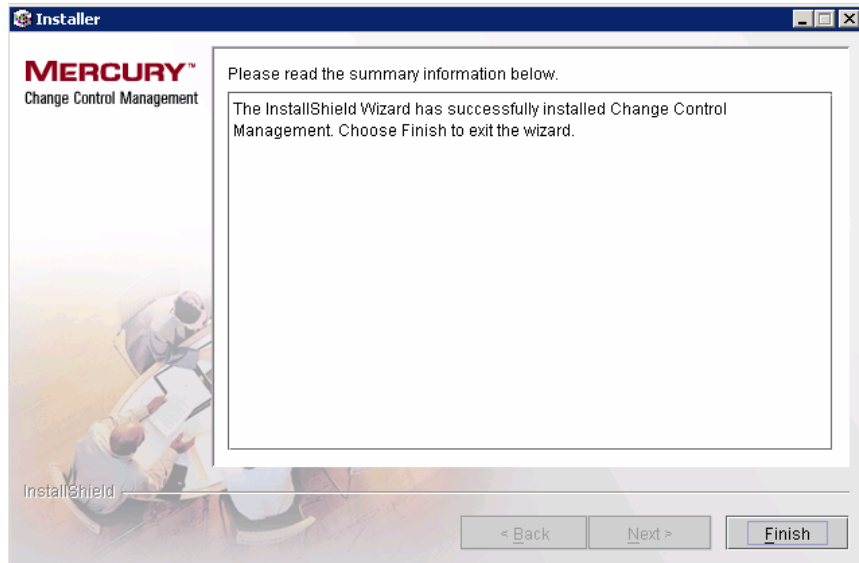
Click **Next**.

- 8 Ensure that the information in the summary screen is correct.



To review or change any settings, click **Back**. To accept the settings and begin installing Change Control Management, click **Next**.

- 9 When the installation process has successfully been completed, click **Finish** in the final InstallShield Wizard screen.



Post-Installation Procedures

After you have finished installing Change Control Management, you must perform the following post-installation procedure before you can begin working with Change Control Management.

To enable Change Control Management:

- 1** Copy the **weblogic.jar** file from the **bea81\weblogic81\server\lib** directory on the Mercury Application Mapping (MAM) server to the **<Change Control Management installation directory>\tomcat\common\lib** directory.
- 2** Update the **<Change Control Management installation directory>\conf\database.properties** file with the configuration settings of the relevant database server.
- 3** Change the command line directory to **<Change Control Management installation directory>\tomcat\webapps\ccm** and run the following command: **populate.bat -ir**
- 4** It is strongly recommended that the MAM administrator create a Change Control Management user in MAM.
- 5** Update the **<Change Control Management installation directory>\conf\integrations.settings** file with the configuration settings of the relevant MAM server and Change Control Management user.
- 6** Update the **<Change Control Management installation directory>\conf\integrations.settings** file with the server address, port, user name, and password of the relevant SMTP server.
- 7** Start the Change Control Management service (**Start > Programs > Change Control Management > Start Service**).
- 8** In a Web browser, enter the URL **http://<server_name>/ccm**, where **server_name** is the name or IP address of the Change Control Management server. If, during the installation process, you selected not to use a Web server and a Tomcat server is being used instead, this URL should point to port 8080.
- 9** Log in to Change Control Management with the user name **admin** and the password **admin**. Ensure that you change this password once you log in. For details on changing your password and creating Change Control Management users, refer to the *Mercury Change Control Management User's Guide*.