

HP OpenView Management Portal Using Radia

for the HP-UX, Solaris, and Windows operating systems

Software Version: 1.3.4 (HP-UX and Solaris)

Software Version: 2.1.1 (Windows)

Migration Guide

Legal Notices

Warranty

Hewlett-Packard makes no warranty of any kind with regard to this document, including, but not limited to, the implied warranties of merchantability and fitness for a particular purpose. Hewlett-Packard shall not be held liable for errors contained herein or direct, indirect, special, incidental or consequential damages in connection with the furnishing, performance, or use of this material.

A copy of the specific warranty terms applicable to your Hewlett-Packard product can be obtained from your local Sales and Service Office.

Restricted Rights Legend

Use, duplication, or disclosure by the U.S. Government is subject to restrictions as set forth in subparagraph (c)(1)(ii) of the Rights in Technical Data and Computer Software clause in DFARS 252.227-7013.

Hewlett-Packard Company
United States of America

Rights for non-DOD U.S. Government Departments and Agencies are as set forth in FAR 52.227-19(c)(1,2).

Copyright Notices

© Copyright 1998-2005 Hewlett-Packard Development Company, L.P.

No part of this document may be copied, reproduced, or translated into another language without the prior written consent of Hewlett-Packard Company. The information contained in this material is subject to change without notice.

Trademark Notices

Linux is a registered trademark of Linus Torvalds.

OpenLDAP is a registered trademark of the OpenLDAP Foundation.

Acknowledgements

PREBOOT EXECUTION ENVIRONMENT (PXE) SERVER
Copyright © 1996-1999 Intel Corporation.

TFTP SERVER
Copyright © 1983, 1993
The Regents of the University of California.

OpenLDAP
Copyright 1999-2001 The OpenLDAP Foundation, Redwood City, California, USA.
Portions Copyright © 1992-1996 Regents of the University of Michigan.

OpenSSL License
Copyright © 1998-2001 The OpenSSLProject.

Original SSLeay License
Copyright © 1995-1998 Eric Young (eay@cryptsoft.com)

DHTML Calendar
Copyright Mihai Bazon, 2002, 2003

Documentation Updates

This manual's title page contains the following identifying information:

- Version number, which indicates the software version
- Document release date, which changes each time the document is updated
- Software release date, which indicates the release date of this version of the software

To check for recent updates or to verify that you are using the most recent edition, visit the following URL:

http://ovweb.external.hp.com/lpe/doc_serv/

You will also receive updated or new editions if you subscribe to the appropriate product support service. Contact your HP sales representative for details.

Support

Visit the HP OpenView web site at:

<http://www.managementsoftware.hp.com/>

This web site provides contact information and details about the products, services, and support that HP OpenView offers.

You can also go directly to the support web site at:

<http://support.openview.hp.com/>

HP OpenView online software support provides customer self-solve capabilities. It provides a fast and efficient way to access interactive technical support tools needed to manage your business. As a valuable support customer, you can benefit by using the support site to:

- Search for knowledge documents of interest
- Submit and track progress on support cases
- Manage a support contract
- Look up HP support contacts
- Review information about available services
- Enter discussions with other software customers
- Research and register for software training

Most of the support areas require that you register as an HP Passport user and log in. Many also require a support contract.

To find more information about access levels, go to:

http://support.openview.hp.com/access_level.jsp

To register for an HP Passport ID, go to:

<http://www.managementsoftware.hp.com/passport-registration.html>

Contents

- 1 Introduction7
- 2 Windows Upgrades..... 9
 - Upgrading the Management Portal from 2.x to 2.1.19
 - Pre-Migration Considerations9
 - Windows Preparations9
 - Windows Upgrade to 2.1.110
 - Update Portal Tasks, Zones and RMAs11
 - Adding the Chassis Container13
 - Migrating the Management Portal from 1.3 to 2.1.114
 - Summary of Procedures14
 - Preparing for the Upgrade15
 - Installing Management Portal 2.1.1 to a New Location15
 - Exporting Data from Management Portal 1.316
 - To perform the export16
 - Using Optional Parameters to Export Computers17
 - Specifying Optional Parameters18
 - Examples19
 - Importing Data into Management Portal 2.x19
 - Performing Post-Import Tasks20
- 3 UNIX Upgrades.....21
 - Upgrading from 1.3.x to 1.3.421
 - Applying the Management Portal 1.3.4 Upgrade21
 - Updating Novadigm Tasks22

1 Introduction

The purpose of this guide is to help System Administrators upgrade the HP OpenView Management Portal using Radia (the Management Portal) to the latest versions available on the Radia 4.2 Infrastructure CD.

Windows topics:

- Page 9, Upgrading the Management Portal from 2.x to 2.1.1.
- Page 14, Migrating the Management Portal from 1.3 to 2.1.1.**Error! Reference source not found.**

HP-UX or Solaris topics:

- Page 21, Upgrading from 1.3.x to 1.3.4.

2 Windows Upgrades

Upgrading the Management Portal from 2.x to 2.1.1

Use these procedures to upgrade existing Management Portal Zones from version 2.x to version 2.1.1. The following topics discuss how to apply updates to these different Management Portal components:

- Page 9, Master Portal Zone using the setup program
- Page 11, Adapter for SSL to enable LDAPS
- Page 11, Portal Tasks
- Page 12, Subordinate Zones in your enterprise
- Page 12, Management Agents in your Zones
- Page 12, LDAP Directory Service for use with Policy Tasks
- Page 13, Chassis Container Addition

Pre-Migration Considerations

Make sure the Management Portal resides on one of the following operating systems.

Table 1 Minimum Supported Operating Systems and Levels

Platform	Operating System and Level
Windows	2000 Server, Service Pack 3
	2003 Server, Service Pack 1
	XP Professional, Service Pack 2
	NT Server 4.0, Service Pack 6 **



**The Windows NT 4.0 Platform does not support Network Discovery. This is mainly due to that operating system's retired status by Microsoft. HP recommends migrating a Management Portal installed on a Windows NT 4.0 platform to one of the actively supported operation systems.

Windows Preparations

To prepare for the 2.1.1 update



HP recommends taking the usual precaution of backing up the production environment before beginning the migration.

- 1 Create a backup of each Management Portal Zone prior to applying the latest update. To backup the Zone directories, navigate to the Zone container and run the Backup Directory task from the Directory Management task group.

- 2 Important! Make a backup of your `rmp.cfg` file, located in the `\etc` directory, prior to running the setup program to update your environment.



There is a known issue when upgrading the Management Portal if its `rmp.cfg` file contains embedded curly brackets. For example, the following line in the `rmp.cfg` file contains curly brackets:

```
NETSCAN_INCLUDE          { domain {DEMO} }
```

and will likely result in a corrupt `rmp.cfg` file following the install.

The workaround is to restore your backup `rmp.cfg` file. For details, see [To restore a backup rmp.cfg file on page 11](#).

- 3 If your `rmp.cfg` file contains code for temporary workarounds, HP recommends commenting out this code prior to running the update procedures. For example, if you added a SET command below the `rmp.cfg` initialization parameters for the `LDAP_AUTH`, such as:

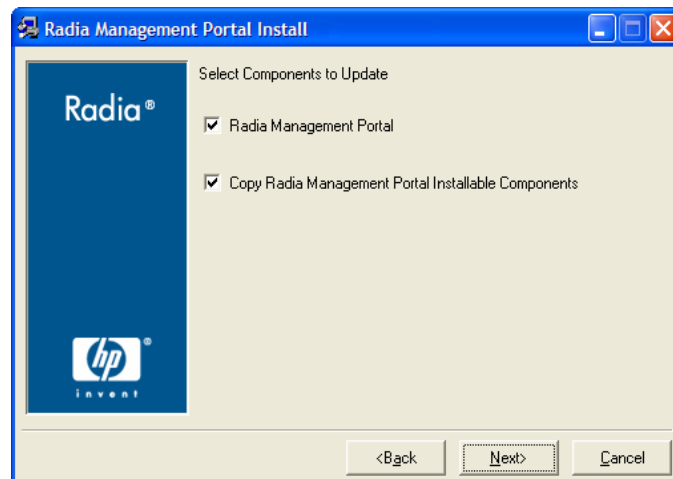
```
set ::rmp::cfg (LDAP_AUTH) 1
```

please comment out this workaround prior to running the Management Portal setup program.

Windows Upgrade to 2.1.1

To run the setup program for the Master Portal Zone

- 1 To update the Master Zone of the Management Portal, navigate to the `\extended_infrastructure\management_portal\win32` folder of the Radia 4.2 Infrastructure CD location and run the `setup.exe` program.
- 2 The majority of the prompts to update the Management Portal are the same as those to install it. For details, refer to the installation procedures in the *Installation and Configuration Guide for the HP OpenView Management Portal Using Radia for Windows (Management Portal Guide for Windows, v2.1)*.
- 3 After you accept the end-user license agreement, the setup program detects an existing Management Portal Zone and prompts you to select the components to update, as shown in step 4.
- 4 Select both components to update your Management Portal Zone as well as the media used to install additional Zones in your enterprise, and click **Next**.



- 5 After the Management Portal is updated, the setup program also prompts you to install remotely installable components and publications.
 - Respond Yes when prompted to install each of the following: Remotely Installable Infrastructure Components, Remotely Installable Client Components and the Radia Publications. This version includes updates or fixes to each of them.

Normally, after running `setup.exe` the Management Portal opens and the Login panel is displayed. The next step is to accept the task changes delivered with this version by running Update Portal Tasks from the Directory Management task group. See page 11 for details.



If the Management Portal does not start automatically after the installation program completes, restore the backup copy of your `rmp.cfg` file to the `/etc` folder due to a known installation problem with embedded curly braces.

To restore a backup `rmp.cfg` file

- 1 The `rmp.cfg` file is located in the `/etc` folder of where the Management Portal is installed. If the contents of this file are corrupted by the install, restore the backup copy of your `rmp.cfg` file after `setup.exe` completes.
- 2 Start the Management Portal service, [httpd]. For details, refer to the *Management Portal Guide for Windows*.

To install the Adapter for SSL and enable LDAPS support

This version introduces a Secure LDAP (LDAPS) Directory Service connection. LDAPS support requires the installation of the Adapter for SSL Version 2.1.1, and specifically the installation of the file `ldaps82.dll`. This `ldaps82.dll` is unpacked from the Adapter for SSL `tls.tkd` module when the Management Portal service is started.

To make sure the `ldaps82.dll` file is unpacked and installed, follow this sequence:

- 1 Install or upgrade the Management Portal to version 2.1.1.
- 2 Stop the Management Portal service and delete any existing `ldaps82.dll` found in the sub-directory folders or path of where the Management Portal is installed.
- 3 Install the Adapter for SSL version 2.1.1 and select **Radia Infrastructure Server**. This selection installs both HTTPS and LDAPS support for a Management Portal.
- 4 Start the Management Portal service and run Update Portal Tasks, as given in the following procedure.
- 5 To configure and enable an LDAP Directory Service connection, refer to the topic *Specifying LDAP or LDAPS Directory Service Properties* in the *Installation and Configuration Guide for the HP OpenView Management Portal using Radia*.

Update Portal Tasks, Zones and RMAs

To update the tasks available to the Management Portal

- 1 Login as Admin (default password is `secret`).
- 2 Navigate to the **Zone** → **Configuration** → **Tasks** container.
- 3 From the Directory Management task group click **Update Portal Tasks**.
- 4 Review the task changes and select those tasks that you wish to update.



HP recommends that you do *not* update a task that has been intentionally customized, such as a Notify task. Doing so will overwrite any customizations. The unaccepted task changes remain available for update at a later time.

- 5 Click **Commit**. See the *Management Portal Guide for Windows* for more information on running Update Portal Tasks.

To apply the Updates to Subordinate Management Portal Zones

Use the Update RMP task available on the Management Portal Operations task group to update the Subordinate Zones to version 2.1.1. The procedure is given below.

Prerequisite: Commit the new tasks delivered with the Service Pack using the previous procedure To update the tasks available to the Management Portal on page 11.

- 1 From the Master Portal, navigate to the Zone Access Points container.
- 2 Select a Subordinate Zone object and click **Update RMP** from the Operations task group.
- 3 Repeat the Update RMP task for each subordinate zone in your enterprise.
- 4 To also update the tasks available to the subordinate zones, use the Open Subordinate Zone task to access a Zone remotely, and run Update Portal Tasks from the Tasks container. The Tasks container is accessed from the Zone container, then the Configuration container.

To update the Radia Management Agents (RMAs) being managed by a Zone

This version also updates the RMA to take advantage of the Management Portal processing enhancements in this release. RMAs are installed on all devices being managed by a Portal Zone.

- To update the RMAs on all devices in your Zones, you can use the Install RMA task in the Operations task group to re-install them directly from the portal. You need to run the task from the Portal Zone that is managing the devices.



Use the Install RMA task to update the RMA on the machine hosting the Management Portal Zone, itself; this is not done automatically.

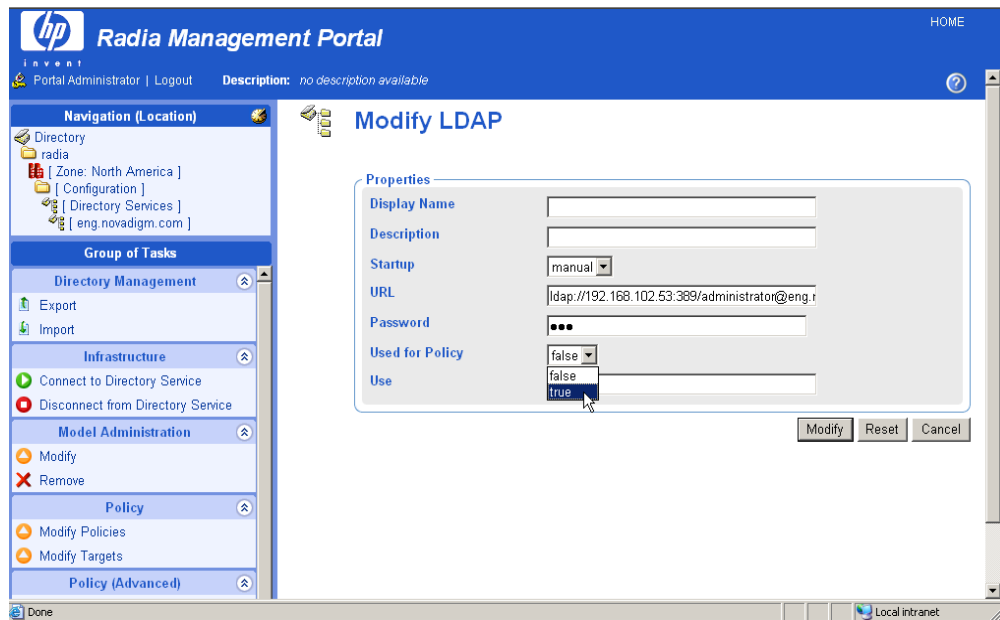
- Alternatively, you can deploy the new RMA for version 2.1.1 from a packaged Radia Service or command line. For detailed information, refer to the Engineering Note *OV-EN018234: RMP 2.x: Deploying a Radia Management Agent from a Command or Radia Package*.

To update an LDAP Directory Service for Policy Tasks

The Policy tasks are only available for an LDAP Directory Service when its Used for Policy property is set to **true**. The default value is false, which disables the Policy task groups for that Directory Service.

Use the following steps to modify a Directory Service object's Use for Policy value.

- 1 Display the properties for the Directory Service LDAP object. (Navigate to the object in the **Zone** → **Configuration** → **Directory Services** container.)
- 2 Click **Modify** from the Model Administration task group.
- 3 On the Modify Properties page, go to the Used for Policy drop-down selection box and choose **true**.



- 4 Click **Modify** to save the changes.

Adding the Chassis Container

The Chassis container was introduced in Management Portal version 2.1, and supports the modeling and configuration of blade servers, blade enclosures and racks containing enclosures in a Zone. For details, refer to the Management Portal Guide for Windows.

If your existing Management Portal directory does not include a Chassis container, use these procedures to add one. Begin this procedure with Management Portal 2.1.x installed and the service started.

To add the Chassis container to an existing Management Portal Directory

- 1 Create a text file with the following contents and name it `chassis-ds.ldif`.

```
dn: cn=zone/chassis, cn=rmp, cn=config, cn=<ENTER ZONE NAME HERE>,
cn=radia

cn: zone/chassis
objectclass: top
objectclass: container
objectclass: ds
objectclass: ds-mk
displayname: Mount Point: Chassis
startup: auto
template: <ENTER ROOT RMP DIR HERE>/modules/rmp.tkd/etc/chassis.ldif
iscriticalsystemobject: true
```

- 2 Copy the `chassis-ds.ldif` file to the `etc/export` directory of your Management Portal installation location.

- 3 Modify `etc/export/chassis-ds.ldif` and substitute `<ENTER_ZONE_NAME_HERE>` with your zone name. Also substitute `<ENTER_ROOT_RMP_DIR_HERE>` with the install path of your Management Portal *using forward slashes (/)*.

Example: If your Management Portal root directory is

`C:\Novadigm\IntegrationServer`, enter it in the line for the template as:

```
template: C:/Novadigm/IntegrationServer/modules/rmp.tkd/etc
/chassis.ldif
```

- 4 Use the Management Portal Import task to import `chassis-ds.ldif`. Wait at least 30 seconds for the Management Portal to commit the change.
- 5 Restart the RIS service under which the Management Portal is running. The Chassis container should now appear under the Zone container.

Migrating the Management Portal from 1.3 to 2.1.1

Use these procedures to migrate an existing Management Portal version 1.3 to version 2.1.1. The migrated Management Portal can be placed on the same machine, or on a different machine.

Summary of Procedures

Upgrading from the Management Portal 1.3 to 2.1.1 is a *side-by-side migration*, not an in-place upgrade. This is because the Management Portal 2.x releases adopted an LDAP directory structure that was quite different from the directory structure used in the 1.x releases.

To upgrade from 1.3 to 2.1.1, you must install Management Portal 2.1.1 to a new location (either on the same or on a different machine), and then use the provided migration script to prepare export files of the data from your Management Portal 1.3 directory. You then use Management Portal 2.1.1 to import the data. The final step is to upgrade the version of the Management Agents on all of the imported devices by re-installing the Management Agent from the Management Portal 2.1.1 portal.

The provided migration script will assist you in transferring the following entries:

- Computers and their Group hierarchy
- Operators and Administrators
- Delegated Administrators (entitlements)

To make your upgrade to version 2.1.1 as smooth as possible, please review each of the topics in this guide before beginning. The topics include:

- Page 15, Exporting Data from Management Portal 1.3.
- Page 15. Installing Management Portal 2.1.1 to a New Location.
- Page 16, Exporting Data from Management Portal 1.3.
- Page 19, Importing Data into Management Portal 2.x.
- Page 20, Performing Post-Import Tasks.


Preparing for the Upgrade

To prepare for the upgrade

- 1 Review your current and scheduled jobs. Note any jobs that you want to recreate on the new Management Portal 2.1.1.
- 2 Stop the existing service for Management Portal 1.3.
 - If your Management Portal is running as a Windows Service, stop the **Radia Integration Server [httpd]** service from the Windows Service control window.
 - If your Management Portal is not running as a Windows service, stop the service by typing the following command in a DOS window from the directory where the Management Portal is installed:

```
nvdkit httpd.tkd stop
```
- 3 Backup the entire Management Portal directory to a new location. Normally, the Management Portal is installed to:


```
SystemDrive:\Novadigm\IntegrationServer
```

 -  The backup copy of the `rmp.mk` file will be used in the task: Exporting Data from Management Portal 1.3 on page 16.
- 4 Remove the existing Management Portal service. To do this, open a DOS window and change to the directory where the Management Portal was installed. Issue the following command:

```
nvdkit httpd.tkd remove
```
- 5 After creating a backup and then removing the service, you can install the new Management Portal 2.1.1. Using the procedures in the following task.

Installing Management Portal 2.1.1 to a New Location

Use these steps to install version 2.1.1 of the Management Portal. Specify an install directory for version 2.1.1 that is separate from your existing Management Portal 1.3 install directory.

-  The installation program for Management Portal version 2.1.1 prompts you for a Zone name. Typically, the initial Management Portal Zone is given the name of your enterprise (Zone names can include spaces, but not periods or special characters). To create additional Zones in your enterprise, install them remotely from the initial Portal Zone using the **Install RMP** task in the Operations task group.

To install Management Portal 2.1.1

- 1 Run the Management Portal installation program, `setup.exe`. This is located on the Radia Infrastructure install media at the following location:

```
extended_infrastructure\management_portal\win32
```

- 2 When prompted for the Management Portal installation folder, make sure to select a directory that is separate from the existing Management Portal 1.3 install directory.

Refer to Chapter 2, Installing the Radia Management Portal in the *Management Portal Guide for Windows, Version 2.1* for detailed installation instructions.

After installing Management Portal 2.1.1, the service for it starts automatically, and the Management Portal login page opens.

3 Login using **Admin** with a password of **secret**.

After the initial install, the Management Portal directory includes the following Zone objects for devices, Groups, users, and entitlements:

- Device container: the Management Portal host computer
- Group container: the Default group, with a single member—the Management Portal host computer
- Administrators and Operators container: a set of default users
- Configuration, Delegated Administrators container: a set of default entitlements

4 Before proceeding with the export and import tasks, you should know how to:

- Use the Management Portal 2.x interface
- Navigate the Zone containers
- Perform basic tasks related to devices and device groups
- Perform import tasks

Refer to Chapter 3, Using the Radia Management Portal in the *Management Portal Guide for Windows* for more task information.

Exporting Data from Management Portal 1.3

This task explains how to run the provided `migrate.tcl` script against the backup copy of your existing Management Portal 1.3 directory (the `rmp.mk` file). The script produces Management Portal 2.1-compatible export files of those computers (and computer groups), users, and user entitlements from your Management Portal 1.3 directory that you want to import into the Management Portal 2.1 Zone.

The end-result of running the migrate script is one or more of the following files:

- `computers.ldif` – Contains objects for Devices and Groups. The export process retains the Group hierarchy and membership of your existing Management Portal 1.3 directory.
- `adminsoperators.ldif` – Contains objects for Administrators and Operators.
- `entitlements.ldif` – Contains objects for Delegated Administrators (entitlement).

The migrate export script includes optional parameters you can use to limit which computer devices will be exported into a Management Portal 2.x Zone. Alternatively, you can limit which objects are exported into a Management Portal Zone by deleting the objects from the resulting export file, or by selecting only a portion of the objects during the Import task.

To perform the export

- 1 Select a local working directory from which to run the migration script.
- 2 Copy the following files to the working directory:

Table 2 Files Needed to Run the Management Portal `migrate.tcl` Script

File(s) to Copy	Source Location
<code>migrate.tcl</code>	The <code>\migrate</code> folder of the Management Portal 2.x install media
<code>rmp.mk</code>	The <code>\etc</code> folder of your Management Portal 1.3 Backup environment

File(s) to Copy	Source Location
license.nvd nvdkit.exe rmp.tkd	The \modules folder of your Management Portal 1.3 directory

- 3 Open a DOS window and go to the working directory where you placed the necessary files (from Step 2).
- 4 Run the provided `migrate.tcl` export script against the Management Portal 1.3 `rmp.mk` file from your backup environment using the following commands.

To export administrators and operators, type:

```
nvdkit migrate.tcl -action export_administrators_operators
```

To export delegated administrators (policy entitlements), type:

```
nvdkit migrate.tcl -action export_entitlements
```

To export computers and groups, type:

```
nvdkit migrate.tcl -action export_computers
```



See Using Optional Parameters to Export Computers below for information on the optional parameters that can be used with this command.

- 5 The migration script ends with a summary of the number of the number of objects exported, as shown here.

```
200040723 15:2817 Info:
```

```
200040723 15:2817 Info: Exported 1574 computers.
```

```
200040723 15:2817 Info: Exported 9 computer groups.
```

```
200040723 15:2817 Info: Export completed.
```

A trace of the migration is saved to the `migrate.log`.

- 6 Optionally, review the entries in the `*.ldif` files created by the migration script. The output files names are:

```
computers.ldif
```

```
adminsoperators.ldif
```

```
entitlements.ldif
```

If desired, you can edit the `*.ldif` files to remove objects you don't want available for import. You can also rename the files, as long as you keep the `*.ldif` extension.



The Import task also allows you to select which of the available objects are to be imported from a given export file.

- 7 If necessary, repeat the export process for computers with additional parameters to further limit the objects you want to import into a Management Portal 2.x zone.

Using Optional Parameters to Export Computers

The migrate export script includes optional parameters you can use to limit which computer devices will be exported into a Management Portal 2.x Zone. This topic explains their use.

The default command to export computers is given below:

Syntax

```
nvdkit migrate.tcl -action export_computers
```

Description

This command creates a `computers.ldif` export file of all computers and groups located in the Novadigm-managed Infrastructure (`cn=novadigm,cn=world`) container of the Management Portal 1.3 directory, including all lower levels.

Figure 1 Exporting computers includes all computers and groups within Novadigm-managed infrastructure



The export retains the hierarchy and group memberships of the exported computers. By default, the Zone assignments for the exported objects is set to the variable `<<zone>>`, which is later resolved to the name of the Management Portal Zone used to run the Import task.

Specifying Optional Parameters

Specify optional parameters with the command to export computers to change the starting authority within the Management Portal 1.3 directory from which to begin the export, or to limit how many levels to include in the export.

Syntax

```
nvdkit migrate.tcl -action export_computers <-basedn> <-scope>
```

Description

Exports all computers found within the branch (authority) of the Management Portal 1.3 directory as specified by the `-basedn` parameter. If `-scope` is also specified, it may further limit the export to a specific number of levels below the starting point.

Table 3 Optional parameters for the action: `export_computers`

Parameter	Explanation
<code>-basedn</code>	<p>Specifies the Distinguished Name (DN) of the starting point in the Management Portal directory for the export of computers. Unless <code>-scope</code> is also used, the export includes computers and groups in all lower levels of the specified branch, as well.</p> <p>The default is: <code>-basedn cn=novadigm,cn=world</code></p> <p>Specify -basedn dn to export computers from the named DN. Allows you to limit the export to a subset of computers in the Novadigm-managed infrastructure container, or to export computers located in the Microsoft Windows Network container of the Portal directory.</p> <p>Note: The DN for a Management Portal object is displayed in the Portal Workspace when you hover the mouse over the object.</p>

Parameter	Explanation
-scope	<p>Specifies the number of Management Portal directory levels below the -basedn to include in the export.</p> <p>The default is -scope sub, which includes all levels below the -basedn.</p> <p>Note: The following alternate values are available, but rarely needed.</p> <p>Specify -scope one to limit the export to computers located one level below the -basedn. Rarely used.</p> <p>Specify -scope base to export only the -basedn object. Rarely used.</p>

Examples

- 1 The following command:

```
nvdkit migrate.tcl -action export_computers ↵
-basedn cn=managed-groups,cn=novadigm,cn=world
```

limits the export to the computers and groups found in the Radia Managed Groups container, including all lower levels.

- 2 The following command:

```
nvdkit migrate.tcl -action export_computers ↵
-basedn cn=my_group,managed-groups,cn=novadigm,cn=world
-scope one
```

limits the export to the user created group named MyGroup and computers in that group (computers one level below the starting authority). MyGroup exists within the Radia Managed Groups container.

Importing Data into Management Portal 2.x

This task reviews how to import the *.ldif files created from the migration script into the new Management Portal 2.x Zone.

Prerequisites

- Export files (*.ldif) created from the migrate.tcl script. By default, these files are named:
 - computers.ldif
 - adminsoperators.ldif
 - entitlements.ldif
- Familiarity with the use of the Management Portal 2.x Portal.
- Knowledge of how to perform the Import task in Management Portal 2.x. Refer to Chapter 4, Administrative Functions in the *Management Portal Guide for Windows* for more information.

To import data into Management Portal 2.x

- 1 Copy the *.ldif files created by the migrate.tcl script in the previous task to the following Management Portal 2.x directory location:

```
<Management Portal 2.x install dir>\etc\export
```

This is the required location for placing any *.ldif files that are to be imported into the Management Portal using the Import task.

- 2 Login to the Management Portal 2.x as **Admin**.
- 3 From the Directory Management task group, click the **Import** task.
- 4 Select one of the export files, such as `computers.ldif`, and complete the dialogs to import all or a subset of the objects to this Management Portal Zone.

Use the Import Task – Select Roots dialog to remove any objects from the export file that are not to be imported into this Management Portal Zone. To do this, remove the check mark from the object’s listing before clicking **Next**.

The final page of the Import task, the Submit Import—Import select dialog box, displays the differences between the LDIF file objects that you are importing and the Portal directory objects.



Import Task Notes:

- When importing a `computers.ldif` file, group objects are listed below the computer objects.
- When importing objects from Management Portal 1.3, the properties from Management Portal 1.3 take priority over any existing entry in Management Portal 2.x for the same object. For example, any user-entered values from Management Portal 1.3, such as Description and Display Name, take priority over the same properties for an existing object in Management Portal 2.x

- 5 Repeat the Import task for each *.ldif file you created using the migration script.

To evaluate and modify the Results in Management Portal 2.x

Use the Portal to evaluate and modify the import results. Navigate through the Zone Groups container to evaluate the hierarchy and memberships. Adjust the hierarchy and membership using the tasks available in the Portal’s Model Administration task group. See the topics related to working with Groups and Devices in Chapter 4 of the *Management Portal Guide for Windows*.

Performing Post-Import Tasks

After importing the computers from your Management Portal 1.3 directory into the Management Portal 2.x Portal, perform the following tasks:

- 1 Install the Management Agent (for version 2.1.1) to all imported devices. Use the Install Management Agent task in the Operations task group. See Chapter 5, Operations Functions in the *Management Portal Guide for Windows* for details.
- 2 To recreate scheduled jobs, use the list of jobs you created in the task Preparing for the Upgrade on page 15.

3 UNIX Upgrades

Upgrading from 1.3.x to 1.3.4

If you are running Management Portal version 1.3.x on a UNIX platform, follow these topics to upgrade to version 1.3.4.

- Applying the Management Portal 1.3.4 upgrade modules
- Updating Novadigm tasks

Applying the Management Portal 1.3.4 Upgrade

To upgrade from the Management Portal version 1.3.x to version 1.3.4



See the *Installation and Configuration Guide for the HP-OpenView Management Portal for UNIX (Management Portal Guide for UNIX)* for more information on how to perform any of the Management Portal tasks.

You can perform a local upgrade of an existing Management Portal Server using the install media located on the Radia Infrastructure CD.

- 1 Prior to upgrading, create a backup of the Management Portal Server directory. Refer to the *Management Portal Guide for UNIX* if you need instructions on stopping the existing Radia Integration Server [httpd] service.
- 2 Run the Management Portal installation program from the computer where the existing Management Portal Server is installed. The install program is located on the following folders on the Radia Infrastructure CD:

```
\extended_infrastructure\management_portal\hpux  
\extended_infrastructure\management_portal\solaris
```

For details on running the install program, see the Installation chapter of the *Management Portal Guide for UNIX*.

The upgrade will apply the new components to the existing Management Portal, but keep the current parameters specified in the configuration file, `rms.cfg`.

- 3 Following installation, restart the Management Portal service [httpd] and then run Update Novadigm Tasks. These steps are detailed below.

To start the Management Portal service for UNIX

- 1 Change your current directory to the directory where you installed the Management Portal (the default location is `/opt/Novadigm/IntegrationServer/`).
- 2 Type:

```
./nvdkit httpd.tkd
```
- 3 Press **Enter**.

The Management Portal service starts.

Updating Novadigm Tasks

To update Novadigm tasks

- 1 Log on to the Management Portal.
- 2 Use the Authority navigation aid to select **Directory**.
- 3 In the Directory Management task group, click **Update Novadigm Tasks** to update your directory with task changes delivered with this release (additions, deletes, and modifications).

The Update Tasks – Select window opens.

- 4 To accept all tasks delivered with this upgrade, click **Select All** in the Differences area.

The tasks that you selected are added to the appropriate Add, Delete, or Modify area of the window.

- 5 Click **Commit** to update the Management Portal with the new tasks.

This completes the upgrade of the Management Portal for UNIX to Version 1.3.4.