

HP Change Configuration and Release Management (CCRM) Solution

For the Windows operating system

Software Version: 9.30

Troubleshooting Guide

Document Release Date: June 2012

Software Release Date: June 2012



Legal Notices

Warranty

The only warranties for HP products and services are set forth in the express warranty statements accompanying such products and services. Nothing herein should be construed as constituting an additional warranty. HP shall not be liable for technical or editorial errors or omissions contained herein.

The information contained herein is subject to change without notice.

Restricted Rights Legend

Confidential computer software. Valid license from HP required for possession, use or copying. Consistent with FAR 12.211 and 12.212, Commercial Computer Software, Computer Software Documentation, and Technical Data for Commercial Items are licensed to the U.S. Government under vendor's standard commercial license.

Copyright Notice

© Copyright 2005 - 2012 Hewlett-Packard Development Company, L.P.

Trademark Notices

Adobe™ is a trademark of Adobe Systems Incorporated.

Microsoft® and Windows® are U.S. registered trademarks of Microsoft Corporation.

UNIX® is a registered trademark of The Open Group.

Documentation Updates

The title page of this document contains the following identifying information:

- Software Version number, which indicates the software version.
- Document Release Date, which changes each time the document is updated.
- Software Release Date, which indicates the release date of this version of the software.

To check for recent updates or to verify that you are using the most recent edition of a document, go to:

<http://h20230.www2.hp.com/selfsolve/manuals>

This site requires that you register for an HP Passport and sign in. To register for an HP Passport ID, go to:

<http://h20229.www2.hp.com/passport-registration.html>

Or click the **New users - please register** link on the HP Passport login page.

You will also receive updated or new editions if you subscribe to the appropriate product support service. Contact your HP sales representative for details.

Support

Visit the HP Software Support Online web site at:

<http://www.hp.com/go/hpsoftwaresupport>

This web site provides contact information and details about the products, services, and support that HP Software offers.

HP Software online support provides customer self-solve capabilities. It provides a fast and efficient way to access interactive technical support tools needed to manage your business. As a valued support customer, you can benefit by using the support web site to:

- Search for knowledge documents of interest
- Submit and track support cases and enhancement requests
- Download software patches
- Manage support contracts
- Look up HP support contacts
- Review information about available services
- Enter into discussions with other software customers
- Research and register for software training

Most of the support areas require that you register as an HP Passport user and sign in. Many also require a support contract. To register for an HP Passport ID, go to:

<http://h20229.www2.hp.com/passport-registration.html>

To find more information about access levels, go to:

http://h20230.www2.hp.com/new_access_levels.jsp

Contents

Welcome to This Guide.....	7
How This Guide is Organized.....	7
Who Should Read This Guide.....	8
Additional Online Resources.....	8
Purpose of this Document.....	9
Triage.....	9
Determine Where the Solution is Failing.....	9
Check Log Files.....	9
Enable Log-in for Product Components.....	9
Troubleshooting HP SM and HP RC.....	11
HP Product Log Files.....	11
Problem: In the SM-RC integration, the tickets do not pass from SM to RC.....	11
Problem: In the Change ticket, the Change Assessment and Change Calendar sections .. are missing.....	13
Problem: When the Change Request opens, the Change Assessment section or Change .. Calendar section login screen appears.....	14
Problem: When trying to update a Request for Change (RFC) from RC to SM, RC .. application asks for SM credentials even though the LWSSO feature is configured .. properly in both servers.....	15
Troubleshooting HP PPM Center and HP SM.....	16
HP Product Log Files.....	16
Problem: When clicking the Change Number ticket after RFC is opened in PPM, the SM .. login screen appears.....	16
Problem: After selecting the Operational RFC check box and clicking Save, SM fails to .. create the RFC.....	17
Problem: When opening an RFC from a PPM task, the RFC is not opened in the business .. service context (origins from UCMDB to PPM), but with a default business service .. (application).....	18

Troubleshooting HP PPM Center and HP UCMDB.....	20
HP Product Log Files.....	20
Problem: When clicking the Service button, the list of all business services does not appear.....	20
Problem: When clicking the Service button, an error message appears. PPM's log file reports that the connection to UCMDB has failed.....	21
Problem: When clicking the Service button, an error message appears. The PPM log file reports that the version of UCMDB is wrong.....	21
Problem: The Service check box is missing in the Task Details window.....	22
Problem: The Service check box under Project settings is missing.....	22
Troubleshooting HP SM and HP OO.....	23
HP Product Log Files.....	23
Problem: When trying to search for a flow in the OO section of SM, the list is empty.....	23
Problem: When an OO flow runs from an SM ticket, the following error message appears in the activity log.....	24
Problem: Trying to initiate an OO flow that contains SM steps fails.....	25
Troubleshooting HP RC and HP UCMDB.....	26
HP Product Log Files.....	26
Problem: RFC ticket will not pass from SM to RC.....	26
Problem: SM's embedded calendar view does not display any RFCs.....	27
Problem: RFC's will not sync from SM to RC.....	28

Welcome to This Guide

Welcome to the HP Change Configuration and Release Management (CCRM) Troubleshooting Guide. This guide provides information for troubleshooting the CCRM Solution v9.30.

This chapter includes:

- [How This Guide is Organized](#)
- [Who Should Read This Guide](#)
- [Additional Online Resources](#)

Note: If you have any feedback or comments, please contact solutionpackagingandscp@hp.com.

How This Guide is Organized

This guide contains the following chapters:

Chapter 1 Purpose of this Document

Provides an overview of what this guide covers.

Chapter 2 Troubleshooting HP SM and HP RC

Provides troubleshooting solutions for HP Service Manager and HP Release Control.

Chapter 3 Troubleshooting HP PPM Center and HP SM

Provides troubleshooting solutions for HP Project and Portfolio Management Center and HP Service Manager.

Chapter 4 Troubleshooting HP PPM Center and HP UCMDB

Provides troubleshooting solutions for HP Project and Portfolio Management Center and HP Universal CMDB.

Chapter 5 Troubleshooting HP SM and HP OO

Provides troubleshooting solutions for HP Service Manager and HP Operations Orchestration.

Chapter 6 Troubleshooting HP RC and HP UCMDB

Provides troubleshooting solutions for HP Release Control and HP Universal CMDB.

Who Should Read This Guide

This guide is intended for a system implementer or system administrator responsible for upgrading the HP Closed Loop Incident Process Solution. This guide assumes that you have administrative access to all systems. The procedures in this guide may duplicate information available in your HP Service Manager, HP Universal CMDB, HP Release Control, HP Project and Portfolio Management Center, HP Operations Orchestration and HP UCMDB-Configuration Manager documentation, but is provided here for convenience.

Additional Online Resources

Troubleshooting & Knowledge Base accesses the Troubleshooting page on the HP Software Support Web site where you can search the Self-solve knowledge base. Choose **Help > Troubleshooting & Knowledge Base**. The URL for this Web site is <http://h20230.www2.hp.com/troubleshooting.jsp>.

HP Software Support accesses the HP Software Support Web site. This site enables you to browse the Self-solve knowledge base. You can also post to and search user discussion forums, submit support requests, download patches and updated documentation, and more. Choose **Help > HP Software Support**. The URL for this Web site is www.hp.com/go/hpssoftwaresupport.

Most of the support areas require that you register as an HP Passport user and sign in. Many also require a support contract.

To find more information about access levels, go to:
http://h20230.www2.hp.com/new_access_levels.jsp

To register for an HP Passport user ID, go to:
<http://h20229.www2.hp.com/passport-registration.html>.

HP Software Web site accesses the HP Software Web site. This site provides you with the most up-to-date information on HP Software products. This includes new software releases, seminars and trade shows, customer support, and more. Choose **Help > HP Software Web site**. The URL for this Web site is www.hp.com/go/software.

HP Software Solutions Now accesses the HPSW Solution and Integration Portal Web site. This site enables you to explore HP Product Solutions to meet your business needs, includes a full list of Integrations between HP Products, as well as a listing of ITIL Processes. The URL for this Web site is <http://support.openview.hp.com/sc/solutions/index.jsp>.

Chapter 1

Purpose of this Document

This document provides troubleshooting information for the HP Change Configuration and Release Management (CCRM) Solution, including basic triage information.

Triage

HP CCRM is a solution comprised of several products. First, you must determine which product or integration has failed.

Determine Where the Solution is Failing

In some cases, you can determine quickly which product has failed. If the problem source is not obvious, you can check log files or run verification tests to isolate the cause.

Check Log Files

Log files exist for most of the integrated products. Every chapter includes a table describing the log files for the HP products that are part of the solution. Logging for different components can be set up as described in [Enable Log-in for Product Components](#).

Enable Log-in for Product Components

HP Universal CMDB

For more details about problems or errors, in **C:\hp\UCMDB\UCMDBServer\conf\log\fcmdb.properties**, change the log level to **DEBUG/INFO**.

Set the loglevel parameter to **DEBUG**.

```
#loglevel can be any of TRACE DEBUG INFO WARN ERROR FATAL
loglevel=ERROR
def.file.max.size=5000KB
def.files.backup.count=10
msg.layout=%d [%t] (%F:%L) %-5p - %m%n
```

When the log is set to **debug**, a new log is created named **fcmdb.<your DS name>.log**. This log contains all the information that is relevant to the specific DS (integration point) only.

C:\hp\UCMDB\UCMDBServer\runtime\log\error.log contains the **general error.log**. This log contains, for example, infrastructure errors, such as an error with initializing the adapter.

HP Release Control

For more details about problems or errors, change the log level to **DEBUG**.

For problems in the RC adapter (**C:\HP\RC910\conf\<adapter name>-log4j.properties**), set the **def.level** parameter to **DEBUG**.

```
log4j.rootLogger=WARN, ccm_general_fileout
log4j.rootLogger.additivity=false
# comment line above and uncomment following line to print additional debug messages to log.log file from all components
#log4j.rootCategory=DEBUG, stdout, fileout

def.file.max.size=4000KB
def.files.backup.count=10

def.level=warn
```

Chapter 2

Troubleshooting HP SM and HP RC

HP Product Log Files

Product	Location of Log's File
HP Service Manager (SM)	C:\Program Files\HP\Service Manager 9.30\Server\logs\sm.log
HP Release Control (RC)	C:\HP\RC910\servers\server-0\logs\sm-rc-adapter\ccm_general.log

Problem: In the SM-RC integration, the tickets do not pass from SM to RC.

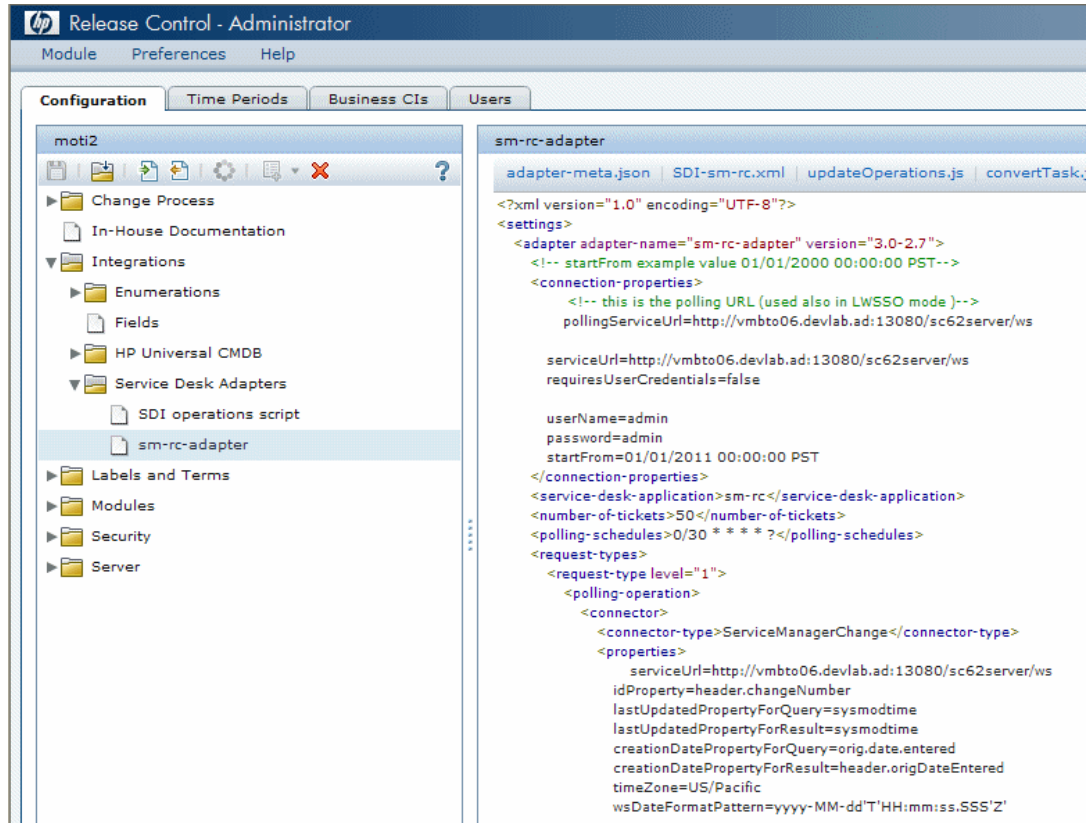
Solutions

1. Confirm that the RC SDI adapter and SM are using the same time zone and the same date format.

RC Server:

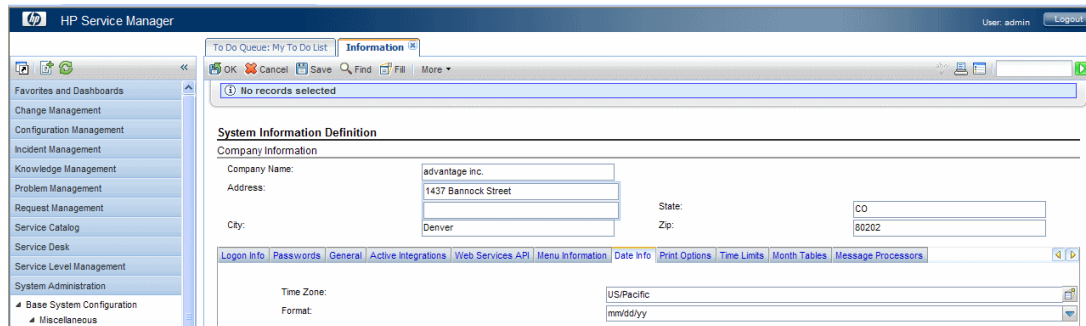
- a. Log on to Release Control.
- b. From the menu bar, select **Module > Administrator**.
- c. From the upper tabs, select the **Configuration** tab.
- d. Expand **Integrations** and select **Service Desk Adapters**.
- e. Select the adapter name for the SM-RC integration.
- f. From the tabs in the panel on the right side of the screen, click the **adapter name.settings** tab.

- g. Check the time zone and date format.



SM Server:

- a. Log on to Service Manager.
- b. From the navigation pane, select **System Administration > Base System Configuration > Miscellaneous > System Information Record**.
- c. Click the **Date Info** tab.
- d. Check the time zone and date format.



2. If the problem persists, confirm that LWSSO in the RC adapter is set to **NO**.
 - a. Log on to Release Control.
 - b. From the menu bar, select **Module > Administrator**.
 - c. From the upper tabs, select **Configuration**.
 - d. Expand **Integrations** and select **Service Desk Adapters**.
 - e. Select the SM adapter.
 - f. Click the **adapter-meta.json** tab and check if LWSSO is **false**. It should be **yes**.

```
sm-adapter
adapter-meta.json | updateOperations.js | convertTask.js | sm-adapter.settings | convertChange.js | SDI-sm.xml
{"wsUrlPath":"/sc62server/PwS/", "isSso":true, "isSmTailored":true, "statefull":true, "isHttps":false, "conversionType":"Standard", "metaVersion":"5.1", "version":"VER_7_7_11", "serviceDeskType":"ServiceManager", "user":"admin", "password":"admin", "host":"vmamqa39.devlab.ad", "port":"13080", "timezone":"US/Pacific", "sdName":"si", "oSecret":null, "startFrom":null}
```

Note: If this is the problem, configure the RC adapter again according to the HP Change Configuration and Release Management (CCRM) version 9.30 Configuration Guide.

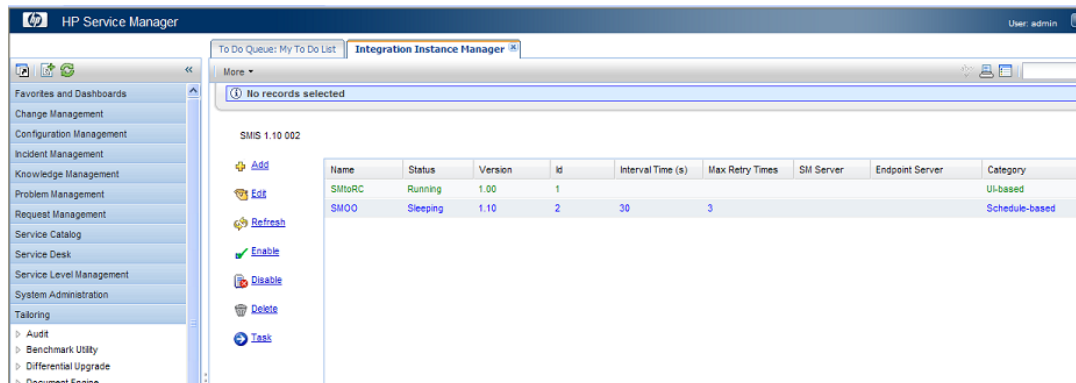
Problem: In the *Change* ticket, the *Change Assessment* and *Change Calendar* sections are missing.

Solution

Check the configuration of the SM-RC adapter under **Integration Manager** in Service Manager.

SM Server:

1. Log on to Service Manager.
2. In the SM client, from the navigation pane, select **Tailoring > Integration Manager**.



3. If the SMtoRC integration is active, select it and click **Disable**.
4. Click **Edit**.

5. In the Integration Instance Information pane, click **Next**.
6. In the Integration Instance Parameters pane, configure the following parameters:

Name	Recommended Value	Description
rc.server.url	http://<user defined>:8080/ccm	Fully qualified domain name server address of RC
rc.adapter.name	<user defined>	Adapter name created in RC (without - adapter extension)
re.username	<user defined>	RC user name
rcStandalone	true or false	Specified run mode of RC. If RC is connected to UCMDDB, click false . If RC is not connected to UCMDDB, click true .

7. In the Integration Instance Fields pane, click **Next**.
8. In the Integration Instance Mapping pane, click **Finish**.
9. Click the **SMtoRC** integration instance and select **Enable**.

Problem: When the *Change Request* opens, the Change Assessment section or Change Calendar section login screen appears.

Solution

Follow the LWSSO configuration sections for SM and RC in the HP Change Configuration and Release Management (CCRM) version 9.30 Configuration Guide.

Problem: When trying to update a Request for Change (RFC) from RC to SM, RC application asks for SM credentials even though the LWSSO feature is configured properly in both servers.

Note: Valid only when you have a Service Manager server installed on Linux.

Solution

1. Edit the SM hosts file and append SM's and RC's Internet Protocols (IPs) and fully qualified domain names (FQDNs).
2. **Save** and close the file.

Chapter 3

Troubleshooting HP PPM Center and HP SM

HP Product Log Files

Product	Location of Log's File
HP Project and Portfolio Management Center (PPM)	C:\PPM\server\HPPPM\log\serverLog.log
HP Service Manager (SM)	C:\Program Files\HP\Service Manager 9.30\Server\logs\sm.log

Problem: When clicking the *Change Number* ticket after RFC is opened in PPM, the SM login screen appears.

Solution

Open the **server.conf** file in PPM and check the LWSSO configuration.

1. Log on to Project and Portfolio Management.
2. Browse to **C:\PPM**.
3. Open the **server.conf** file.
4. Set the following parameters in the LWSSO section:
 - com.kintana.core.server.ENABLE_LW_SSO_UI to true.
 - com.kintana.core.server.LW_SSO_DOMAIN to the domain type.
 - com.kintana.core.server.LW_SSO_INIT_STRING to the INITSTRING type.

- com.kintana.core.server.LW_SSO_TRUSTED_DOMAIN to the trusted domain type.

```
com.kintana.core.server.ENABLE_LW_SSO_UI=true
com.kintana.core.server.LW_SSO_DOMAIN=devlab.ad
com.kintana.core.server.LW_SSO_INIT_STRING=CCRMSOLUTION
com.kintana.core.server.LW_SSO_EXPIRATION_PERIOD=60
com.kintana.core.server.LW_SSO_TRUSTED_DOMAIN=devlab.ad
com.kintana.core.server.LW_SSO_CLEAR_COOKIE=true
com.kintana.core.server.ENABLE_LW_SSO_WEB_SERVICE=true
```

5. Confirm that the string in com.kintana.core.server.SM_WEB_URL is working.
6. Restart PPM.

Note: If the problem still exists, check the LWSSO configuration on the SM side according to the [HP Change Configuration and Release Management \(CCRM\) version 9.30 Configuration Guide](#).

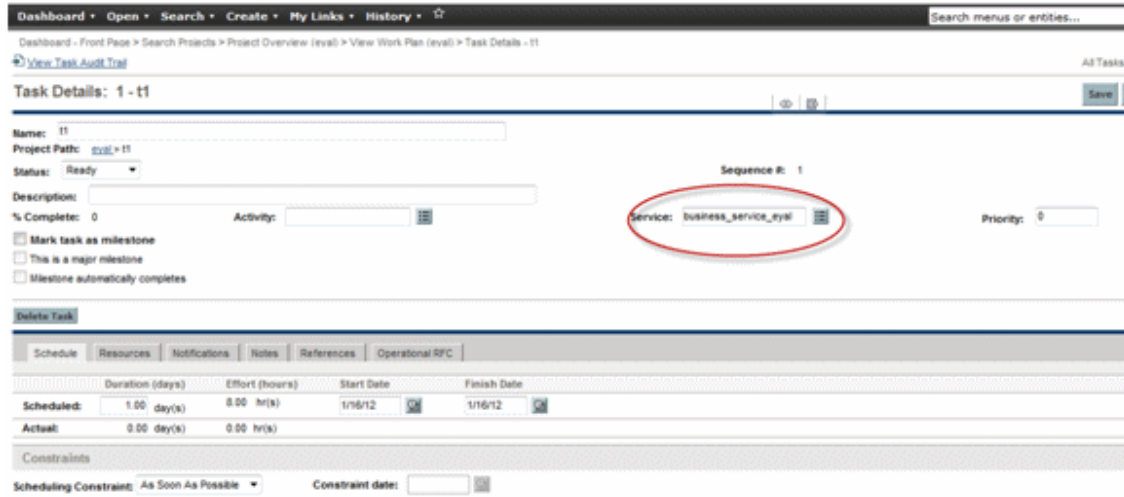
Problem: After selecting the *Operational RFC* check box and clicking **Save**, SM fails to create the RFC.

Solution

Confirm the process listener is running in SM.

1. Log on to Service Manager.
2. In the Service Manager command field on the upper-right side of the screen, enter **status**.
3. Click **Start Scheduler**.
4. Double-click **PPMfailover** and verify that PPM is running.

Problem: When opening an RFC from a PPM task, the RFC is not opened in the business service context (origins from UCMDB to PPM), but with a default business service (application).



Solution

1. Log on to the PPM server file system.
2. Browse and edit %PPM_HOME%\conf\smrfc \sm-rfc-mapping.xml.
3. Search for the <smField>Service</smField> section.

4. Confirm the following rows are included exactly as shown below in the file under this section:

```
<field>
  <smField>Service</smField>
  <ppmField>TASK_SERVICE</ppmField>
  <useOnCreate>true</useOnCreate>
  <useOnUpdate>true</useOnUpdate>
  <defaultValue>Applications</defaultValue>
</field>
```

5. **Save** and close the file.
6. Restart the PPM service.

Chapter 4

Troubleshooting HP PPM Center and HP UCMDB

HP Product Log Files

Product	Location of Log's File
HP Project and Portfolio Management Center (PPM)	C:\PPM\server\HPPPM\log\serverLog.log
HP Universal CMDB (UCMDB)	C:\hp\UCMDBServer\runtime\log\fcmdb.log

Problem: When clicking the *Service* button, the list of all business services does not appear.

Solution

Check the **server.conf** file.

1. Log on to Project and Portfolio Management.
2. Browse to **C:\PPM**.
3. Open the **server.conf** file.
4. Check the **SERVICE_LIST_UCMDB_MAX_CI_NUMBER** parameter. This parameter defines how many CIs the PPM displays.
5. Set this parameter to the correct value.

```
#PPM-UCMDB Integration: UCMDB Server Parameters for Service Concept
com.kintana.core.server.SERVICE_LIST_SOURCE=ucmdb
com.kintana.core.server.SERVICE_LIST_UCMDB_CACHE_TIMEOUT=120
com.kintana.core.server.SERVICE_LIST_UCMDB_CI_MAPPINGS=name:name,description:provider
com.kintana.core.server.SERVICE_LIST_UCMDB_CI_TYPE=business_service
com.kintana.core.server.SERVICE_LIST_UCMDB_MAX_CI_NUMBER=100
com.kintana.core.server.UCMDB_SERVER_URL=http://vmamqa105.devlab.ad:8080/ucmdb
com.kintana.core.server.UCMDB_SERVER_VERSION=9.0
com.kintana.core.server.UCMDB_WS_USER=admin
com.kintana.core.server.UCMDB_WS_PASSWORD=admin
#PPM-UCMDB Parameter List end
```

Problem: When clicking the *Service* button, an error message appears. PPM's log file reports that the connection to UCMDB has failed.

```
An unknown error has occurred. For more information, please contact your PPM administrator and provide the following GUID number:
GUID=F0D6496F-20D8-E1A3-80E3-49CF3871CFFD
nested detail:null; nested exception is:
    java.lang.NullPointerException

An unknown error has occurred. For more information, please contact your PPM administrator and provide the following GUID number:
GUID=F0D6496F-20D8-E1A3-80E3-49CF3871CFFD
at com.kintana.core.btointeg.cmdb.CMDBConnection_SOAP.getCIsByTypeChunked(CMDBConnection_SOAP.java:203)
at com.kintana.core.btointeg.cmdb.CMDBConnection_SOAP.queryCIs(CMDBConnection_SOAP.java:117)
at com.kintana.core.btointeg.cmdb.CMDBConnectionPoolImpl_SOAPfCMDBConnectionWrapper.queryCIs(CMDBConnectionPoolImpl_SOAP.java:43)
at com.kintana.core.btointeg.cmdb.CICacheManager.loadFromSource(CICacheManager.java:57)
at com.kintana.core.server.BaseCacheManager.retrieveData(BaseCacheManager.java:332)
at com.kintana.core.btointeg.cmdb.CMDBAgent.queryCIs(CMDBAgent.java:11)
at com.kintana.core.btointeg.cmdb.KSCGetCmdbServicesCommand.execute(KSCGetCmdbServicesCommand.java:102)
at com.kintana.core.server.execution.CommandExecutionAgent.doExecuteCommands(CommandExecutionAgent.java:826)
at com.kintana.core.server.execution.CommandExecutionAgent.executeCommands(CommandExecutionAgent.java:713)
at com.kintana.core.server.execution.BaseExecutionManager.executeBatchForRegularExecution(BaseExecutionManager.java:1162)
at com.kintana.core.server.execution.BaseExecutionManager.executeBatch(BaseExecutionManager.java:1093)
at com.kintana.core.server.execution.BaseExecutionManager.run(BaseExecutionManager.java:841)
Caused by: org.apache.axis2.AxisFault: null; nested exception is:
    java.lang.NullPointerException
at com.kintana.core.btointeg.cmdb.CMDBConnection_SOAP.getCIsByTypeChunked(CMDBConnection_SOAP.java:177)
... 11 more
```

Solution

Check the **server.conf** file.

1. Log on to Project and Portfolio Management.
2. Browse to **C:\PPM**.
3. Open the **server.conf** file.
4. Check that the CI type defined as the parameter in the server.conf file is **SERVICE_LIST_UCMDB_CI_TYPE**.
5. Set the parameter to the correct value.
6. Restart PPM.

Problem: When clicking the *Service* button, an error message appears. The PPM log file reports that the version of UCMDB is wrong.

```
The following Command Step is not subject to timing out: com.kintana.core.btointeg.cmdb.KSCGetCmdbServicesCommand
```

Solution

Check the **server.conf** file.

1. Log on to Project and Portfolio Management.
2. Browse to **C:\PPM**.

3. Open the **server.conf** file.
4. Confirm the version of UCMDB is correct.

```
com.kintana.core.server.UCMDB_SERVER_VERSION
```

5. Set the parameter to the correct value.
6. Restart PPM.

Problem: The *Service* check box is missing in the Task Details window.

Solution

Under Project Settings in PPM, check if the **Service** option was chosen.

1. Log on to Project and Portfolio Management.
2. Select a project.
3. Click **Project Setting**.
4. Select the **Service** check box and click **Save**.

Additional Fields

- | | |
|---|--------------------------------------|
| <input checked="" type="checkbox"/> Service (used to categorize services) | <input type="checkbox"/> Is required |
| <input checked="" type="checkbox"/> Activity (used to categorize tasks, recommended for Capitalization) | |
| <input checked="" type="checkbox"/> Role (used to categorize resources, recommended for Work Load and Project Staffing) | |

Problem: The *Service* check box under Project settings is missing.

Solution

Check the configuration according to the PPM extension section in the [HP Change Configuration and Release Management \(CCRM\) version 9.30 Configuration Guide](#).

Chapter 5

Troubleshooting HP SM and HP OO

HP Product Log Files

Product	Location of Log's File
HP Service Manager (SM)	C:\Program Files\HP\Service Manager 9.30\Server\logs\sm.log
HP Operations Orchestration (OO)	C:\Program Files\Hewlett-Packard\Operations Orchestration\Central\logs\Central_wrapper.log

Problem: When trying to search for a flow in the OO section of SM, the list is empty.

Solutions

There are two solutions for this problem. The first solution is to check the configuration of Operations Orchestration in Service Manager.

1. Log on to Service Manager.
2. Navigate to **Tailoring > Integration Manager**.
3. Select the **SMOO** row and click **Edit**. If the integration is enabled, disable it first.
4. Click **Next**.

5. Check all parameters—especially that the **basepath** parameter uploads the flows from OO to SM.

Name	Value
oo.server.url	https://vmamqa54.devlab.ad:8443
oo.user.name	admin
basepath.delimiter	:
basepath	/Library/ITIL
Accept-Language	en
http.conn.timeout	30
http.rec.timeout	30
OOKM	true
OOCM	true

If this problem still occurs, check the SSL configuration between OO and SM according to the HP Change Configuration and Release Management (CCRM) version 9.30 Configuration Guide.

Problem: When an OO flow runs from an SM ticket, the following error message appears in the activity log.

```
Description of the Activity Performed:
OO Flow: Stop Service. History Id: 31016
Report Link: https://vmamqa73.devlab.ad:8443/PAS/app?service=RCLinkService/ReportLinkDispatch&sp=SNINDIVIDUAL_REPAIR_LEVEL&sp=Saa5185aa-dbc4-4feb-8c34-
eeeb1707c950&sp=0&sp=01015
Start Time: 09/21/11 10:32
End Time: 09/21/11 10:32
Response: failure
Result: (FailureMessage=,TimedOut=,Result=)
Return Code: Error
*****
```

Solution

In Operations Orchestration, confirm that the RAS SSL certificates are valid.

To check the SSL certificates in Operations Orchestration:

1. Log on to Operations Orchestration.
2. Browse to **C:\Program Files\Hewlett-Packard\Operations Orchestration\RAS\Java\Default\webapp\conf**.
3. Confirm that all SSL certificates in this folder are valid.

Note: To reproduce the SSL certificate or to configure it again, refer to the Operations Orchestration extension section in the [HP Change Configuration and Release Management \(CCRM\) version 9.30 Configuration Guide](#).

Problem: Trying to initiate an OO flow that contains SM steps fails.

Solution

There are two options to resolve this problem.

- The SM operations in the OO repository may contain out-of-the-box https settings (protocol and port). Change the protocol to http and the port to 13080 and try again.
- Update the OO repository with the latest content pack and try running the flow again.

Chapter 6

Troubleshooting HP RC and HP UCMDB

HP Product Log Files

Product	Location of Log's File
HP Release Control (RC)	C:\HP\RC910\servers\server-0\logs\sm-rc-adapter\ccm_general.log
HP Universal CMDB (UCMDB)	C:\hp\UCMDBServer\runtime\log\fcmdb.log

Problem: RFC ticket will not pass from SM to RC.

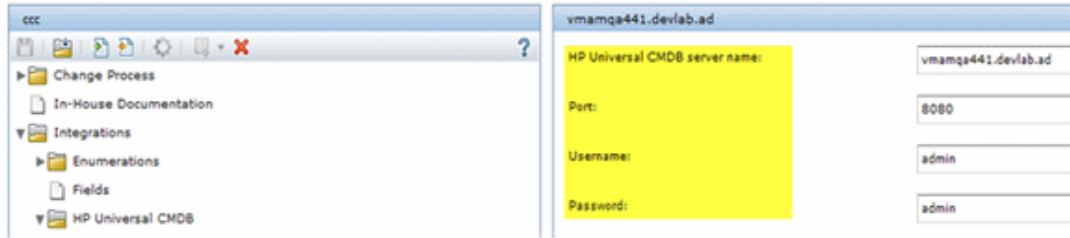
Solution

1. Verify the problem by opening the CCM_GENERAL log file in RC:

```
" ERROR uCmdbSynchorinzer-Job
ApplicationSynchronizer.doSynchronization:67 Synchronization
exception in ApplicationSynchronizer: Could not deserialize
result from HTTP invoker remote service
[http://localhost:8080/cmdb-adapter-90/remoting/SessionManager];
nested exception is java.lang.ClassNotFoundException:
com.hp.ucmdb.api.InvalidCredentialsException"
```

2. Check the UCMDB adapter configuration in RC:
 - a. Log on to Release Control.
 - b. From the menu bar, select **Module > Administrator**.
 - c. Select the **Configuration** tab.
 - d. Expand **Integrations** and select **HP Universal CMDB > Available Connections**.
 - e. Check the UCMDB details in the adapter. Change them if necessary.
 - f. Click **Save**.

- g. Click **Activate**.
- h. Restart the RC service.



If the problem persists, check the side for the UCMDB server.

1. Using the status page, verify the server is up and running.
2. Check if the UCMDB integration user is available for connection
3. If needed, create a new integration user in UCMDB from **UCMDB jmx-console > UCMDB:service=Security Services > createIntegrationUser**, then reconfigure the RC adapter with the new integration user.

createIntegrationUser

Create integration user

Name	Type	Value	Description
customerID	java.lang.Integer		Customer ID
userName	java.lang.String		User Name
password	java.lang.String		Password
dataStoreOrigin	java.lang.String		Data Store Origin - Unique identifier of the application integrating with CMDB

Invoke

Problem: SM's embedded calendar view does not display any RFCs.

Note: When checking the RC user interface, they do appear.

Solution

The root cause for this problem is that the UCMDB Business Service name used may contain special characters (for instance, Admin's Business Service).

This special character “” is not supported by default in RC's match pattern for the business element. For this reason, RC cannot find this CI in UCMDB.

To fix this problem, either drop the special character from the business service name in UCMDB or update the default match pattern in RC to include the special character.

Note: Setting the maximum to larger than that may affect the performance of HP Universal CMDB.

To increase the number of CI property conditions HP Release Control uses for impact analysis:

1. Log on to UCMDB jmx-console.
2. Under UCMDB, click **UCMDB:service=Settings Services**.
3. Locate **setSettingValue**.
4. In the Value box for the parameter **customerId**, enter the customer ID.
5. In the Value box for the parameter **Name**, enter **tql.validation.max.vars.propertiescondition**.
6. In the Value box for the parameter **Value**, enter the number written in the error message (in example above—100).
7. Click **Invoke**.
8. Restart the UCMDB server.

Too many CIs are attached to one RFC (more than hundreds)

Remove some of the affected CIs attached to the RFC in SM.