

HP OpenView Using Radia 4.1

Feature Notes

July 2005



Legal Notices

Warranty

Hewlett-Packard makes no warranty of any kind with regard to this document, including, but not limited to, the implied warranties of merchantability and fitness for a particular purpose. Hewlett-Packard shall not be held liable for errors contained herein or direct, indirect, special, incidental or consequential damages in connection with the furnishing, performance, or use of this material.

A copy of the specific warranty terms applicable to your Hewlett-Packard product can be obtained from your local Sales and Service Office.

Restricted Rights Legend

Use, duplication, or disclosure by the U.S. Government is subject to restrictions as set forth in subparagraph (c)(1)(ii) of the Rights in Technical Data and Computer Software clause in DFARS 252.227-7013.

Hewlett-Packard Company
United States of America

Rights for non-DOD U.S. Government Departments and Agencies are as set forth in FAR 52.227-19(c)(1,2).

Copyright Notices

© Copyright 2005 Hewlett-Packard Development Company, L.P.

No part of this document may be copied, reproduced, or translated into another language without the prior written consent of Hewlett-Packard Company. The information contained in this material is subject to change without notice.

Trademark Notices

Linux is a registered trademark of Linus Torvalds.

Microsoft®, Windows®, and Windows® XP are U.S. registered trademarks of Microsoft Corporation.

OpenLDAP is a registered trademark of the OpenLDAP Foundation.

Acknowledgements

PREBOOT EXECUTION ENVIRONMENT (PXE) SERVER
Copyright © 1996-1999 Intel Corporation.

TFTP SERVER
Copyright © 1983, 1993
The Regents of the University of California.

OpenLDAP
Copyright 1999-2001 The OpenLDAP Foundation, Redwood City, California, USA.
Portions Copyright © 1992-1996 Regents of the University of Michigan.

OpenSSL License
Copyright © 1998-2001 The OpenSSLProject.

Original SSLeay License
Copyright © 1995-1998 Eric Young (eay@cryptsoft.com)

DHTML Calendar
Copyright Mihai Bazon, 2002, 2003

Support

Please visit the HP OpenView support web site at:

[***http://www.hp.com/managementsoftware/support***](http://www.hp.com/managementsoftware/support)

This web site provides contact information and details about the products, services, and support that HP OpenView offers.

HP OpenView online software support provides customer self-solve capabilities. It provides a fast and efficient way to access interactive technical support tools needed to manage your business. As a valuable support customer, you can benefit by using the support site to:

- Search for knowledge documents of interest
- Submit enhancement requests online
- Download software patches
- Submit and track progress on support cases
- Manage a support contract
- Look up HP support contacts
- Review information about available services
- Enter discussions with other software customers
- Research and register for software training

Most of the support areas require that you register as an HP Passport user and log in. Many also require a support contract.

To find more information about access levels, go to:

[***http://www.hp.com/managementsoftware/access_level***](http://www.hp.com/managementsoftware/access_level)

To register for an HP Passport ID, go to:

[***http://www.managementsoftware.hp.com/passport-registration.html***](http://www.managementsoftware.hp.com/passport-registration.html)

Contents

- Purpose 7

- Product CD-ROMs 7
 - HP OpenView Radia 4.1 Configuration Server 8
 - HP OpenView Radia 4.1 Infrastructure 8
 - HP OpenView Radia 4.1 Applications 8
 - HP OpenView Radia 4.1 OS Manager 9
 - HP OpenView Radia 4.1 Patch Manager 9
 - HP OpenView Radia 4.1 Server Management 9
 - HP OpenView Radia 4 Usage Manager 9
 - HP OpenView Radia 3 MAC OS/X Client 10
 - HP OpenView Radia 4.1 Documentation 10

- Products 12
 - Adapter for HP OpenView 12
 - Adapter for HP OpenView Operations 12
 - Administrator Workstation 12
 - Packager 12
 - Publisher 12
 - System Explorer 13
 - Application Manager 13
 - Configuration Analyzer 15
 - Configuration Server 15
 - Database 16
 - Distributed Configuration Server 19
 - Extensions for Windows Installer 19
 - Inventory Manager 20
 - Management Portal 21

Messaging Server.....	22
Multicast Server	23
OS Manager	23
Patch Manager.....	24
Policy Server	26
Proxy Server.....	26
Reporting Server.....	27
Server Management	28
Application Management Profiles.....	28
Configuration Baseline Auditor	29
Configuration File Management.....	30
Terminal Server Support.....	30
Software Manager	31
SSL Adapter.....	32
Staging Server	32
Usage Manager	32

Purpose

These Feature Notes provide a high-level overview of the new features available in HP OpenView Using Radia Version 4.1. It includes:

- Product CD-ROMS and their content, including the Documentation CD.
- An alphabetical listing of the Radia products and the new features for this release.



The components of the Administrator Workstation and Server Management are listed under those entries.

Product CD-ROMs

The installation media for the Radia 4.1 components are located on seven CD-ROMs, which are organized by Radia product type, and contain all of the products that are needed to set up a Radia-managed infrastructure. In addition, there are several CD-ROMS that contain pre-Radia 4.1 product components.

The CD-ROM designations are:

HP OpenView Radia 4.1 Configuration Server

Management Infrastructure	Administrator Workstation
	Configuration Server
	Extensions for Windows Installer
	RadDBUtil

Extended Infrastructure	Distributed Configuration Server [DMA], version 4.6.13
------------------------------------	--

HP OpenView Radia 4.1 Infrastructure

Management Extensions	SSL Adapter
	Policy Server
	Publishing Adapter

Extended Infrastructure	Distributed Configuration Server [DMA], version 4.7.1
	Inventory Manager Server
	Management Portal
	Multicast Server
	Proxy Server
	Staging Server
	Configuration Analyzer
	Knowledge Base Manager
	Reporting Server
	Messaging Server

Adapters	Adapter for HP OVO
	Adapter for HP OpenView


HP OpenView Radia 4.1 Applications

Management Applications	Application Manager
	Inventory Manager
	Software Manager

Patch Manager
OS Manager
Server Management


HP OpenView Radia 4.1 OS Manager

OS Manager, Version 2.0

 Documentation is included on the CD.


HP OpenView Radia 4.1 Patch Manager

Patch Manager, Version 2.1

 Documentation is included on the CD.

HP OpenView Radia 4.1 Server Management


Server Management	Application Management Profiles
	Configuration Baseline Auditor
	Configuration File Management
	Terminal Server Support



- Agent pieces are included in the Radia Client Application installs.
- Configuration Server Database directories contain the necessary resources to create new domains for all supported RCS platforms.
- Documentation is included on the CD.

HP OpenView Radia 4 Usage Manager

Usage Manager, Version 2.1



- The Usage Manager CD was not updated for the Radia 4.1 release.
- Documentation is included on the CD.

HP OpenView Radia 3 MAC OS/X Client

Radia Client for Macintosh® OSX, Version 3.0

HP OpenView Radia 4.1 Documentation

Product Overview

Essentials Guide

Configuration Server and Database Publications

Configuration Server User's Guide

Configuration Server Messages Guide

Database Reference Manual

Distributed Configuration Server Guide

Getting Started Guide

Infrastructure Publications

Adapter for HP OpenView Guide

Adapter for HP OpenView Operations Guide

Adapter for SSL Guide

Configuration Analyzer Guide

Extensions for Windows Installer Getting Started Guide

Extensions for Windows Installer User's Guide

Knowledge Base Manager Guide

Management Portal Guide (UNIX)

Management Portal Guide (Windows)

Messaging Server Guide

Mobile Management for PDAs Guide

Multicast Server Guide

Policy Server Guide

Proxy Server Guide

Publisher Guide

Publishing Adapter Guide

Reporting Server Guide

REXX Programming Guide

System Explorer Guide

Management Applications Publications

Application Manager Guide (Macintosh OS/X)

Application Manager Guide (UNIX)

Application Manager Guide (Windows)

Inventory Manager Guide (Windows)

Inventory Manager Guide (UNIX)

Management Applications Messages and Codes Guide

Software Manager Guide (Windows)

Software Manager Guide (Mac OS X)

Software Manager Guide (UNIX)

Products

Adapter for HP OpenView

Version 2.0 for UNIX and Windows

- No new features.

Adapter for HP OpenView Operations

Client Version 1.2 for UNIX and Windows

Server Version 1.2 for UNIX

- No new features.

Administrator Workstation

Packager

Version 4.1 for Windows

- Supports packaging of Server Applications used in Server Management
 - Use Packager's component selection mode to package the server installation media.
 - After using the Application Templates Editor to create a Custom Application Profile (CAP), use Packager's component selection mode to package and promote the modified CAP to the APPCNTRL class of the Application Template Database.

Publisher

Version 4.0 for Windows

- No new features.

System Explorer

Version 4.0 for Windows


- No new features.

Application Manager

Version 4.0.1 for Windows

- Client Installation.
 - A new value has been added to the ADDLOCAL property in the install.ini file. If you want to install the new Server Management client, use NVDINSTALLSRV as the value for ADDLOCAL.
 - Radia Patch Manager, Radia OS Manager, and Radia Server Management are available as an option in the client installation wizard, but the default state for these features is disabled.

Version 4.1 for UNIX

 The UNIX 4.1 clients for Application Manager, Software Manager and Inventory Manager include the following enhancements, unless noted otherwise.

- Client APPEVENT object.
 - Created for delete of Abandon and Unmanaged applications.
 - Identifies product type (also identified in PREFACE).
 - Object created for application deferral.
 - Object from Preload operations includes the text “(Preload)”
- New support.
 - Added Solaris x86 Install media
 - HTTPS protocol support
 - HTTP Checkpoint Restart support
 - Native TCL script support (.tcl association).
 - OS 32/64 bit detection (ZCONFIG.ZOSBIT).
 - SMBIOS reporting object (LINUX ONLY).
- RADSKMAN call processing.

- New ability to process a group of services with a single RADSKMAN call. New 'CATEXP' command line parameter allows for service filtering based on Catalog variables.
- Use PRODUCT parameter to define product type on RADSKMAN command line.
- RSCURI / DATAURI communication setting overrides.
- radbootx
- New return code for application deferral (326).
- Minimal permissions set on IDMSYS files.
- Both old & new instances available during method processing. (New = ZDSPM000, Old = ZDSPMOLD)
- Product Maintenance
 - New Self Maintenance processing.
 - Backup and restore capabilities added to client upgrades (upgrdmaint).
 - New maintenance activation flag (ACTMAINT [I/D]).
- Hardware Scans
 - Reduced frequency of hardware scans.
 - DNS values added to ZCONF.
 - Dynamic Hardware scans – Allows for user defined scan elements. (File scans only.)
- Timer Updates
 - Timer Retry Attributes.
 - RETRYINT Time between retries (in minutes).
 - RETRYLMT Number of retry attempts.
 - RETRYFLG Enable Retry Support.
 - New Timer frequencies – Monthly and MonthDay.
 - New ZSCHDEF type of STARTUP.
- Client Operations Profiles (COP).
 - New SAP class variable.
 - FILTER to filter the SAP based on any available object value [Obj.Var = Value].
 - Support for COP=M (Run Methods Only).
 - Specify report level, default is ROOT (RPTLEVEL = ROOT, USER, MANAGER or DOMAIN).

- New SETTINGS variables.
 - CMETHOD Post Catalog Script. Exit point after catalog refresh.
 - EXBOUTBX Pre Outbox Script. Exit point before outbox flush.
 - DEFROLE Default SAP Roles (A,O,S,M,R).
 - DISKFREE Specify Minimum Free Disk Space Threshold (Sample: 5120000 or 2%).
 - REMUNIS Notify Daemon changed to reject remote "Un-Install" requests.
 - SENDRPT Send Reporting Object. Control transfer of reporting object in RAM [Immediate or Deferred].
 - USEDEFS Use default SAP [Y/N].

Configuration Analyzer

Version 4.0 for Windows

- No new features.

Configuration Server

Version 4.5.4 SP5 for AIX, HP-UX (PA-RISC 1.1 and 2.0), and Solaris

Version 4.5.4 SP5 for Windows

This version includes several enhancements that improve Configuration Server performance.

- Multiple updates were made to the ZEDMAMS utility in order to improve the functionality of the verbs. Two of the more notable updates are:
 - The CHANGE_OBJECTID verb has been updated to correctly handle blank object IDs.
 - EXPORT_CLASS and EXPORT_INSTANCE have been modified so that they no longer export the _NULL_INSTANCE_.
- The ZTASKEND REXX method has been updated to version 1.9 in order to support version 3.0 of the Messaging Server. Any customizations that were made to a previous version of this file should be ported to this updated version.
 - Place the new version in \rexx\NOVADIGM (/rexx/NOVADIGM on UNIX platforms).
 - Review the customizations that were made to the pre-version 1.9 ZTASKEND REXX method.
 - Copy ZTASKEND REXX up one level to the rexx directory.

- Port the necessary customizations to the copy of ZTASKEND in the rexx directory.
- Save and document the changes.



For additional information refer to the *Installation and Configuration Guide for the HP OpenView Messaging Server Using Radia*.

- When inaccurate and unsuccessful object resolutions occur, the client task will be terminated.
- The database verification has been updated to recognize lowercase international characters in the resource header.
- The EDMSIGNR method has been updated to include Microsoft Windows security-code changes.
- RADISH.EXE has been revised (build 65) to suppress log warnings if the SMINFO object is not present.
- The Configuration Server code has been updated to consistently honor ZSTOP expressions during catalog resolution.
- A new setting (STRICT_EXPR_EVAL=YES | NO | WARN) in the MGR_OBJECT_RESOLUTION section of the edmprof file provides support for strict expression evaluation.
- The EDMMDOBJ method has been enhanced to accommodate the specifying of multiple in-storage database objects for deletion.
- The database-path validation routine in VERIFY_DATABASE has been updated to support symbolic links (UNIX only).
- Added support so that EDMMDOBJ/ZDELOBS could be run directly from the REXX, EDMLINK, without a new method process having to be spawned.
- RadDBUtil enhancements:
 - Locking and unlocking the database is now correctly handled.
 - Updating the OIDCACHE.DAT file is now correctly handled.

Database

Version 4.1 for UNIX, Windows, and Macintosh

Domain	Class	Instance	Status
AUDIT	Application (ZSERVICE)	ZSVCRASH	new instance
	Client Methods (CMETHOD)	ZREPAIR	updated instance value
	File (FILE)	ZMD5INFO	new instance
	UNIX Permissions		new class

Domain	Class	Instance	Status
	(UNIXPERM)		
OS			new domain
PATCHMGR	Application Packages (PACKAGE)	NOTES	new instance
		PKGURL	new instance
	Bulletin (BULLETIN)	ALLDATA	new instance
		HPPOSTED	new instance
		HPREVISED	new instance
		RATING	new instance
		REVISION	new instance
		RUNMODE	new instance
	Dialog Services (DIALOG)	DOMVER	updated instance value to 2.1
	HP-UX Fileset (HPFSET)		new class
	Location (LOCATION)	ZCREATE	new instance
		ZDELETE	new instance
		ZRSCRSTR	new instance
		ZSTOP000	removed instance default value
	Metadata Resources (METADATA)		new class
	Patch Arguments (PASTORE)	AVENDORS	new instance
		CPU	new instance
		DELORDER	new instance
		INSORDER	new instance
		PATCHNUM	new instance
		RATING	new instance
		REBOOT_U	new instance
		RVENDORS	new instance
		SYNC	new instance
	Product Association (PG2PR)		new class
	PRODUCT	VENDOR	new instance
	PROGROUP (PROGROUP)		new class
	Publisher Error (PUBERROR)	VENDOR	new instance
	Release (RELEASE)	CHILDC	new instance

Domain	Class	Instance	Status
		CHILDI	new instance
		PARENTC	new instance
		PARENTI	new instance
		RELEASE	new instance
		RUNMODE	new instance
		SYNC	new instance
POLICY	Country / Region (COUNTRY)		updated class description
	Machine Manufacturers (MANUFACT)		new class
	Machine Models (MODEL)		new class
	Machine Roles (ROLE)		new class
	Machine Subnets (SUBNET)		new class
	User (USER)	ZVERDT	updated instance value
PRDMAINT	Application (ZSERVICE)	ZSVCRASH	new instance
	Path (PATH)	DIR	updated instance value
SOFTWARE	IBM AIX Packages (AIX)	RELYONDB	new instance
	Linux RM Packages (RPM)	CONTENTS	new instance
		INSTOPTS	new instance
		PKGPOCH	new instance
		RELYONDB	new instance
		VERFYOPTS	new instance
	SD Packages (SD)	CONTENTS	new instance
		COREQ	new instance
		EXREQ	new instance
		PREREQ	new instance
		RELYONDB	new instance
	Solaris Patches (SOLPATCH)	CONTENTS	new instance
		CLUSTER	new instance
		RELYONDB	new instance
	SVR4 Packages (SVR4)	ADMIN	new instance
		ADMINOBJ	new instance
		AUTOBOOT	new instance
		CONTENTS	new instance

Domain	Class	Instance	Status
		INCOMP	new instance
		PKGREV	new instance
		PKGVER	new instance
		PREREQ	new instance
		RELYONDB	new instance
		REVERSE	new instance
	WTS App Comp Scripts (WTSACS)		new class
	WTS Control (WTCTRL)		new class
SYSTEM	DB Version (DBVER)	DBVER	updated instance value to 4.1
	Radia Intent (ZINTENT)		new class
	Radia Processes (ZPRODUCT)		new class

Distributed Configuration Server

Version 4.7.1 for HP-UX, Linux, Solaris, and Windows

- **Linux Support**
This release adds Linux as a supported platform.
- **Configurable Destinations for DCS Objects and Logs**
The IDMLIB and IDMLOG variables, which control the destination of the Distributed Configuration Server's configuration objects and log, can now be overridden by the `-libpath` and `-logpath` options in the file, `dmabatch.rc`.

Extensions for Windows Installer

Version 4.0 for Windows

- No new features.
- **Advanced Features Client and Radia Machine/User Support Documentation**
Contents of Technote OV-ENKB01277 added to the User's Guide. Refer to the topic **Enabling Advanced Features Machine/User Support**.

Inventory Manager

Clients: Version 4.0.1 for Windows and Version 4.1 for UNIX

- UNIX Client Enhancements for 4.1
 - All UNIX client enhancements listed under Application Manager, Version 4.1 for UNIX.
 - Native, enhanced, WBEM scanning for UNIX: HP-UX, Linux, and Solaris (rimwbem).
- Improved Collection Consistency Across Platforms
Single `execute.rex` script supports UNIX and other platforms.
- Alternate File Scanning and Differencing
File scanning through `rimgscan` (includes MD5 collection).
- Provides User and Group Inventory Collection.
- Enhanced Reporting Ability

Server: Version 4.1 for Windows and UNIX



Important!

The data posting and reporting functions of the Inventory Manager server running on Windows have been superseded by the Messaging Server v3.0 and Reporting Server v 4.1.1, respectively.

The Messaging Server uses the same code as the Inventory Manager Server to create the tables for the Inventory Manager Database.

- Inventory Manager Server 4.1 installation modifies the `taskend.tcl` and `filepost.tcl` scripts, and adds or modifies the following tables in an Inventory Database:
 - **JOBPARM**
Added for Application Management Templates; used to report job parameters.
 - **JOBSTAT**
Added for Application Management Templates; used to report job statuses.
 - **JOBTASK**
Added for Application Management Templates; used to report job tasks.
 - **AppRNPEvent**
Added for RNP event processing. RNP is a new object in Radia 4.1.
 - **rCIM_ComputerSystem**
Added for RIM WBEM scanning on UNIX.
 - **rCIM_Process**
Added for RIM WBEM scanning on UNIX.
 - **rCIM_OperatingSystem**
Added columns for RIM WBEM scanning on UNIX.

- rRegistry
Added to support 4.0 RIM registry scans using WBEM.
- FileAudt
Added columns for file_md5 and fqsvcid.

Management Portal

Version 1.3.4 for UNIX (HP-UX and Solaris)

- No new features.

Version 2.1 for Windows

- Install Server Management Client
The Install Client task supports all Radia 4.1 clients, including Server Management.
- Server Blades, Enclosures, and Racks
Supports the modeling and policy-based management of server blade devices housed in blade enclosures and racks. The following new containers permit this support:
 - Chassis Container, with groups for: Blade Enclosure Configurations, Blade Enclosures, and Racks containing Enclosures
 - Cross References Container groups for: Enclosure Manufacturers, and Enclosure Models.
- Policy Resolution for Server Blade Objects
When used with OS Manager, supports a configurable LINKS parameter to enable policy resolution of the objects related to server blades, enclosures and racks.
- Enhanced Radia Management Agent features:
 - Substantially smaller footprint.
 - RMA obtains a device's mac address and subnet at time of registration. This means it is no longer necessary to post client-objects to the Management Portal to obtain WOL support.
 - Faster RMA registrations due to enhancements to the `nvdcrd.tcl` module.
 - Tighter security or remote job processing.
- Listening Address Configuration
Supports a LISTENING_ADDRESS configuration parameter to specify a valid, known IP address, DNS, or hostname that the RMA should use to communicate with the Portal. This entry allows an Administrator to solve RMA-RMP communication problems that can occur when the Portal runs on a device with dual-NIC cards, uses a dynamic port, or otherwise has trouble receiving information from an RMA.
- Subnet address formats in the Devices container now use the format: `nnn.nnn.nnn.nnn`, instead of `nnn_nnn_nnn_nnn`.

- Enhanced Paging of LDAP-directory objects (objects retrieved one page at a time).
- Enhanced LDAP indexing.

Messaging Server

Version 3.0 for Windows and UNIX (HP-UX, Solaris, Linux)

- Supports simultaneous processing of multiple data directories (data queues).
- Introduces four independent Data Delivery Agents (DDAs). There are DDAs for each of the following client-reported objects: CORE objects, INVENTORY (FILEPOST) objects, WBEM objects, and PATCH objects.
 - DDAs are configured independently and each has the ability to post data using ODBC, HTTP or HTTPS.
 - Use of DDAs requires the ZTASKEND rexx method, version 1.9.
- The Data Delivery Agents can be used to post data to an SQL database or an Oracle database.
 - On a Windows platform, the DDAs enable direct posting of client-reported objects to an Inventory database, Patch database, or Management Portal Directory.
 - On a UNIX platform, if third-party drivers are provided and installed separately, the DDAs can also be used for direct posting of client-reported objects to an Inventory database or Patch database. If third-party drivers are not provided separately, the DDAs can take advantage of the available store and forward features to forward the client-reported objects to a Windows Messaging Server. From the Windows Messaging Server, the objects can be posted directly to an Inventory or Patch database.
- Upon startup, creates any required inventory database tables using the same code as the Inventory Server.
- Enhancements for posting data using ODBC makes the Messaging Server the HP recommended method for posting client-reported data to an Inventory database.
- Using the Messaging Server with ODBC posting and the Reporting Server replaces all data posting and reporting functions of the Inventory Manager Server.
- Allows users to transfer any customized code from their Inventory Manager Server quickly and easily.
- Supports store and forward using HTTPS or HTTP.
- Supports store and forward with multiple data directories (data queues).
- Backward compatibility provides for RMS 2.x routing options, if desired.

Multicast Server

Version 3.1 for HP-UX, Solaris, and Windows



Important!

This version of Multicast Server requires that Radia clients be at a minimum level of version 4.0.1.

- Windows version supports OS Manager version 2.0.
- Uses HTTP instead of native TCP as a protocol.
- Considerations
 - This version of Multicast Server must be co-resident with a previous version of Multicast Server, but must be assigned a different port.
 - Use the MULTICAST instance in the Radia database to:
 - Configure version 4.0.1 Radia clients to use this version (3.1) of Multicast Server.
 - Configure pre-version 4.0.1 Radia clients to use the previous version (pre-3.1) of Multicast Server.

OS Manager

Version 2.1 for Windows and UNIX (HP-UX Ignite, Solaris Jumpstart, Red Hat Linux Kickstart)

- UNIX Provisioning – Native Install
- Multicast Image Deployment
- Enhanced Dynamic Drivers
- Proliant/RAID & Bios
- Policy-based Provisioning of Server Blades
- Ability to Store Multiple Logs per Machine on the OS Manager Server

Patch Manager

Version 2.1 for Windows and UNIX (HP-UX, Linux)

- Platform Support.
Added support for HP-UX Security Bulletin acquisition and deployment for HP-UX Operating System versions 11.00 and 11.11 (11.i).
- The Patch Administrator Interface.
Added support for HP-UX Security Bulletin Acquisition and HP-UX Patch agent update capabilities.
- Client connect resumes Patch Manager processing after a security bulletin-mandated reboot.
At a minimum, HP recommends using the Application Manager client version 4.1 on UNIX systems. This is to make sure that the application of a security bulletin that mandates a reboot can allow the client connect to resume Patch Manager processing after reboot. This feature also requires Radia Scheduler (radsched) to be installed as a system service on the client computer.
- Support for patching Microsoft Office products. The currently supported products include:
 - Access 2000
 - Access 2002
 - Access 2003
 - Excel 2000
 - Excel 2002
 - Excel 2003
 - FrontPage 2000
 - FrontPage 2002
 - FrontPage 2003
 - Office 2000 *(Limited Support)
 - Office 2003
 - Office XP
 - Outlook 2000
 - Outlook 2002
 - Outlook 2003
 - PowerPoint 2000
 - PowerPoint 2002
 - PowerPoint 2003
 - Project 2000
 - Project 2002
 - Project 2003
 - Publisher 2000
 - Publisher 2002
 - Publisher 2003
- Full-file office patches reduces the need for original install media during patching. Patch Manager will distribute full-file office patches, which contain the entire file replacement, instead of the binary updates found in client patches. When using Windows Installer 3.0 or higher, in conjunction with full-file office patches, the likelihood of requiring the original installation media during patch installation is greatly reduced.

- Microsoft's Windows Installer 3.0 and higher has been enhanced to efficiently distribute and manage patch updates. To learn more please review the following article:
<http://support.microsoft.com/?id=893803>
- Office Service Pack detection and distribution capabilities.
By default, all Office Service Packs can be acquired during patch acquisition, so administrators can efficiently utilize Patch Manager to satisfy devices reporting office service pack dependencies. Microsoft Office Service Packs can be acquired when the acquisition bulletin selection contains a value of MSSP*. In cases where an Office product must meet a minimum product version for a patch to be applied, the recommended Service Pack will be depicted in the Patch reports, and the patch will not be downloaded or installed until such pre-requisites are met on the client computer.
- No deployment for Office applications installed from an AIP or Software Manager.
Patch Manager detects and reports Office vulnerabilities for all devices; however it will *not* deploy patches to devices where Office applications are installed from an Administrative Installation Point, or managed via the Software Manager. Administrators are urged to utilize the existing best practices for patching such Office implementations.
- * Limited patch support is being provided for Office 2000 products, due to the following Microsoft requirements:
 - Full-file office patching is supported beginning with Office 2000 Service Pack 3. See <http://office.microsoft.com/en-us/assistance/HA011525651033.aspx>
 - Service Pack 3 has a pre-requisite for Service Release 1a to be installed. Service Release 1a must access original installation media, hence not support unattended installs via Radia Patch Manager. See <http://support.microsoft.com/kb/245025>
- Version 2.0.1 Feature Summary:
 - Added support for SUSE Linux Enterprise Server Versions 8 and 9.
This is reflected in the OS Filter options in the SUSE Settings for acquisition, and the `vendor_os_filter` option in `patch.cfg`. You must establish a User ID and Password through your SUSE Linux vendor to access SUSE internet resources.
 - Added support for RedHat 4 security advisories for Advanced Server (AS), 4 Enterprise Server (ES), and 4 Workstation (WS). This is reflected in the OS Filter options in the RedHat Settings for acquisition, and the `vendor_os_filter` option in `patch.cfg`. Acquisition of Red Hat Security Advisories requires a Red Hat Network account with at least one license for each of the Red Hat Enterprise Server OS versions for which you want to acquire and manage security patches.
 - Compliance, Research, and Acquisition reports are available only through the Reporting Server Version 4.1.1.
 - New Patch Manager reports are now available through the Reporting Server Version 4.1.1 including:
 - Compliance Exception Report
 - Research Exception Report
 - Filtering by Compliance Status for any compliance top level report
 - Drill down for graphical patch reports
 - Filter Lookup for Compliance Status

- Specify the database type (Microsoft SQL Server or Oracle) using the Patch Manager Administrator's DSN settings.

This DSN setting for the database type is the same as the `db_type` parameter in `patch.cfg`. The two possible values are `mssql` for Microsoft SQL Server and `oracle` for Oracle. `Mssql` is the default value. If you are using Oracle, be sure to change this value to `oracle` before doing a patch acquisition or database synchronization.

Policy Server

Version 4.1 for Windows and UNIX

- No new features.
- Includes common components upgrades
 - `nvdkit.exe` Build 154 (Windows)
 - `nvdkit` Build 146 (UNIX)
 - `httpd.tkd` Build 80

Proxy Server

Version 2.1 for Windows

Version 2.1 for UNIX (AIX, HP-UX, Solaris, Solaris x86, Linux)

- Platform Support
For UNIX, includes the following new platform support:
 - Solaris operating system Version 2.5.1 or above, x86 platform.
 - Red Hat Enterprise Linux Version 2.1 or above.
 - SUSE LINUX Enterprise Server Version 8 or 9.
- Embedded Radia 4.x Components
 - For Windows, includes the latest Radia 4.0.1 Windows components embedded in the Proxy Server.
 - For UNIX, includes the latest Radia 4.1 UNIX components embedded in the Proxy Server.
- Static Cache
A Proxy Server's static cache can serve as the data source for a co-located Multicast Server.


- **Secure HTTPS Routing**
New feature for UNIX, exists in Windows.
- **HTTPS Checkpoint Restart**
New feature for UNIX, exists in Windows.


Reporting Server

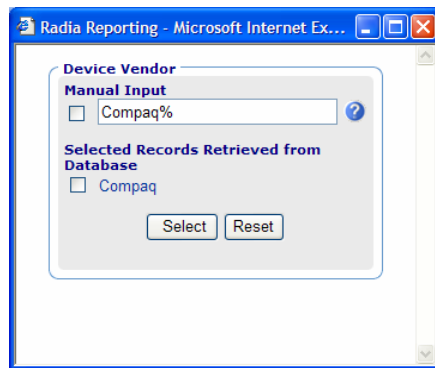
Version 4.1.1 for Windows



Feature Notes

- 1 Install Reporting Server version 4.1.1 into a new folder (not over an existing Reporting Server directory).
 - 2 To display patch reports, requires Patch Manager version 2.1.
- **GMT versus Local Time Display**
GMT and local time will now display correctly within reports as determined by the Date Format setting within config.tcl.
 - **Filter Caching**
Caching support has been added to filters. Filters will use the product cache configuration, for example, if Inventory Manager is configured for a 1 week life, then the Inventory Manager filters will use that as well.
 - **New Reports**
 - **Configuration Baselining Reports**
These reports are designed for customers who have implemented the Configuration Baseline Analyzer into their environment.
 - **Server Configuration Reports**
These reports are designed for customers who have implemented Application Management Templates and Configuration Baselining into their environment.
 - **Setup Page**
The setup page has been updated for better organization. Configuration Options are now located on the left side of the window with parameters on the right.
 - **Modified Filter Lookup**
In order to help fine tune searches, especially within filters that may contain a lot of data (for example, Usage Manager Product Lists), filters with the value lookup capability (denoted by ) will now use the entered data as lookup criteria.

For example, entering “Compaq*” in the data field of the Data Filters group, and then clicking the value lookup button  will open the lookup window displayed in the following figure.



Server Management

Server Management is comprised of a number of components that allow you to control deployment of server applications, control configuration files, create baselines, and manage terminal server applications.

The components are:

- Application Management Profiles
- Configuration Baseline Auditor
- Configuration File Management
- Terminal Server Support

The features of each component are described below.



Important!

To use any of the Server Management components, you must have the appropriate Server License to Use (LTU). Consult the appropriate guide for each component.

Application Management Profiles

Version 1.0 for UNIX and Windows

Application Management Profiles includes a set of tools built on top of the Application Manager to enable the deployment and management of complex software products that are typically required to be present on servers in a datacenter environment. These products, such as Microsoft SQL Server, Oracle, Apache, and Internet Information Server, among others, often employ their own instrumentation or repositories for deployment and management of their implementation.

Application Management Profiles provides tools to:

- Analyze and parameterize configuration control data for targeted products.
- Specify values in the form of a model to be used at deployment time.

- Articulate in the model pre-requisites and constraints that qualify the ability to deploy the products.
- Publish the control information and required ancillary tools, such as utility programs, to the Radia infrastructure for deployment.
- Deploy and configure the software to targeted devices.
- Interact with the target environment before and after installation to enhance management of the deployment.
- Report on the success of the deployment.

Configuration Baseline Auditor

Version 1.0 for Windows and Linux

The Configuration Baseline Auditor (CBA) is a component of the Radia Server Management suite that allows you to:

- Define a logical group of resources (files and registry settings), known as subsystems, for which you define scan filters to determine what information will be captured.
- Collect configuration information about the subsystems, and capture its state at a specific point in time.
- View configuration changes.
- Compare different states within a subsystem:
 - Review changes to a subsystem over time.
 - Review differences between subsystems that should be configured identically.
 - Review differences between a subsystem and a well-defined baseline configuration.

Benefits of the Configuration Baseline Auditor are that you can:

- Collect detailed file and registry value information.
- Collect the subsystem state at regular intervals, such as daily or weekly.
- Transfer information about configuration changes only, which reduces data transfer and database import overhead.
- Easily define the resources that belong to specific subsystems.
- Extract the captured information, which is in XML format, for use by other products.

Configuration File Management

Version 1.0 for Windows and UNIX (AIX, HP-UX, Linux, and Solaris)

The Configuration File Management (CFM) component of Server Management provides a simple solution for administrators to manage changes to configuration files and implement these changes automatically.

Configuration files managed by CFM are text files that can be categorized as follows:

- Hierarchical files, such as INI files, which are divided into sections containing keys and values.
- Files that have a flat well-defined structure, such as host files, which contain records and fields.

To use CFM effectively, you will want to:

- Determine the desired change in behavior that affects the configuration file.
- Understand the current state of the configuration file, if one already exists.
- Decide what changes must be made or what file and entries must be created.
- Use the CFM domain in the System Explorer to create the desired instances, services, and connections, including setting up policy.

Once the desired instances, service, and connections are created, and a Radia client connect occurs, the standard client method applies the changes to the configuration file. If there is no configuration file, it will be created.

Terminal Server Support

Version 1.0 for Windows

The Terminal Server and Citrix component of the Server Management Suite provides the ability to install and manage applications in a Windows Terminal Server environment for applications to be run by Windows Terminal Server clients, and for applications to be run locally on the Windows Terminal server.

- Support for Windows Terminal Server and Citrix
Use Radia to manage Windows Terminal Server and Citrix applications.
 - As part of the application deployment process, the Terminal Server and Citrix component automatically manages the Install and Execute modes in which a Windows Terminal Server can install and maintain applications.
 - Before installing or updating an application, this component will query the Windows Terminal Server for active sessions, prompt users to logoff, and, if needed, disconnect user sessions.

- Upon completion of the installation, the Windows Terminal Server is brought back online to accept incoming user sessions.

Windows Terminal Services is a thin-client server available on Windows 2003 Server, Windows 2000 Server, and Windows NT 4.0 Terminal Server Edition. With Terminal Services, the processing of one or more applications is moved completely off the user's desktop and onto a centralized server. Only screen, mouse, and keyboard information is passed between the client and the server.

Software Manager

Version 4.0.1 for Windows

- Client Installation.
 - A new value has been added to the ADDLOCAL property in the install.ini file. If you want to install the new Server Management client, use NVDINSTALLSRV as the value for ADDLOCAL.
 - Radia Patch Manager, Radia OS Manager, and Radia Server Management are available as an option in the client installation wizard, but the default state for these features is disabled.

Version 4.1 for UNIX

- UI Admin Preferences through COP (RADUICFG).
- All UNIX client enhancements listed under Application Manager, Version 4.1 for UNIX.

SSL Adapter

Version 2.1 for Windows and UNIX: AIX, HP-UX, Linux, Solaris



Feature Note

This version of the Adapter for SSL requires that Radia clients be at a minimum level of **version 4.0**.

- Enablement of SSL support for the Messaging Server.
- The *Installation and Configuration Guide for the HP OpenView Adapter for SSL Using Radia* (Adapter for SSL Guide) details the configuration options for all of the SSL-supported HP OpenView Using Radia components.

Staging Server

Version 4.0.2 for UNIX and Windows

- No new features.

Usage Manager

Version 2.1 for Windows

- No new features.