

# Client Upgrade Procedures Guide for HP OpenView Using Radia

for the Windows operating system

Software Version: 4.0.1

---

## Client Upgrade Procedures Guide

June 2005



## Legal Notices

### Warranty

Hewlett-Packard makes no warranty of any kind with regard to this document, including, but not limited to, the implied warranties of merchantability and fitness for a particular purpose. Hewlett-Packard shall not be held liable for errors contained herein or direct, indirect, special, incidental or consequential damages in connection with the furnishing, performance, or use of this material.

A copy of the specific warranty terms applicable to your Hewlett-Packard product can be obtained from your local Sales and Service Office.

### Restricted Rights Legend

Use, duplication, or disclosure by the U.S. Government is subject to restrictions as set forth in subparagraph (c)(1)(ii) of the Rights in Technical Data and Computer Software clause in DFARS 252.227-7013.

Hewlett-Packard Company  
United States of America

Rights for non-DOD U.S. Government Departments and Agencies are as set forth in FAR 52.227-19(c)(1,2).

### Copyright Notices

© Copyright 2005 Hewlett-Packard Development Company, L.P.

No part of this document may be copied, reproduced, or translated into another language without the prior written consent of Hewlett-Packard Company. The information contained in this material is subject to change without notice.

### Trademark Notices

Linux is a registered trademark of Linus Torvalds.

Microsoft®, Windows®, and Windows® XP are U.S. registered trademarks of Microsoft Corporation.

OpenLDAP is a registered trademark of the OpenLDAP Foundation.

### Acknowledgements

PREBOOT EXECUTION ENVIRONMENT (PXE) SERVER

Copyright © 1996-1999 Intel Corporation.

TFTP SERVER

Copyright © 1983, 1993

The Regents of the University of California.

OpenLDAP

Copyright 1999-2001 The OpenLDAP Foundation, Redwood City, California, USA.

Portions Copyright © 1992-1996 Regents of the University of Michigan.

OpenSSL License

Copyright © 1998-2001 The OpenSSLProject.

Original SSLeay License

Copyright © 1995-1998 Eric Young (eay@cryptsoft.com)

DHTML Calendar

Copyright Mihai Bazon, 2002, 2003

## Support

Please visit the HP OpenView web site at:

**<http://www.managementsoftware.hp.com/>**

This web site provides contact information and details about the products, services, and support that HP OpenView offers.

You can also go directly to the support web site at:

**<http://support.openview.hp.com/>**

HP OpenView online software support provides customer self-solve capabilities. It provides a fast and efficient way to access interactive technical support tools needed to manage your business. As a valuable support customer, you can benefit by using the support site to:

- Search for knowledge documents of interest
- Submit and track progress on support cases
- Manage a support contract
- Look up HP support contacts
- Review information about available services
- Enter discussions with other software customers
- Research and register for software training

Most of the support areas require that you register as an HP Passport user and log in. Many also require a support contract.

To find more information about access levels, go to:

**[http://support.openview.hp.com/access\\_level.jsp](http://support.openview.hp.com/access_level.jsp)**

To register for an HP Passport ID, go to:

**<https://passport2.hp.com/hpp/newuser.do>**

# Contents

<b>1</b>	<b>Preparing Your Radia 2.xClients for Upgrade .....</b>	<b>8</b>
	Before you Begin.....	9
	What this chapter is about.....	9
	Important Prerequisites.....	11
	Before upgrading 2.07/2.08/2.1 Clients.....	11
	Upgrading Internet Explorer .....	11
	Importing the RADIA4PR Service to the Radia Database .....	12
	Configuring the RADIA4PR Service.....	14
	Determining Client Needs .....	14
	Customizing the Packages Connected to the RADIA4PR Service .....	16
	Checking the Version of Internet Explorer.....	18
	Deploying the RADIA4PR Service.....	21
	Removing the RADIA4PR service .....	21
	The Radia4.htm Page .....	23
<b>2</b>	<b>Upgrading Your Radia Clients.....</b>	<b>25</b>
	Before you begin: .....	25
	Where to find the upgrade materials .....	25
	Radia Client Upgrade Materials.....	25
	System Requirements for the Radia Client 4.0.1.....	26
	About the Recommended Upgrade Process.....	27
	About the Radia Client Upgrade .....	28
	Upgrading the Radia Client for Windows.....	29
	Importing the Export Decks .....	29
	Configuring the Radia Client Installation Service.....	31

Index ..... **Error! Bookmark not defined.**



# 1 Preparing Your Radia 2.x Clients for Upgrade

Use these procedures in this chapter to prepare your Radia 2.x client machines for upgrade to Radia 4.0.1.

Microsoft requires their operating systems be upgraded with later versions of the operating system extensions that are currently available from Microsoft such as .NET, WMI, and Windows Installer. HP is offering an optional Radia service — the Radia Microsoft Windows Platform Prerequisites (RADIA4PR) to current Radia Administrators—that will allow you to distribute .NET, WMI, or Windows Installer to your users before you upgrade your Radia environment.

This early distribution option offers the following advantages:

- You can use Radia to deliver and install Microsoft's operating system (OS) extensions.
- You can separate the deployment of Microsoft's OS extensions from the overhead and timing considerations for rolling out the Radia 4.0.1 Client.
- You can separate the reboot that is necessary after installing Microsoft's OS extensions from the Radia 4.0.1 client installation.

It is not required that you follow the procedures in this chapter if you are installing the Radia 4.0.1 client using installation media. If you choose to skip this chapter and go directly to Chapter 2, *Upgrading Your Radia Clients*, the Radia Client installation will check for Microsoft's operating system extensions and will upgrade or install the necessary extensions. You can also download the extensions from Microsoft's Web site and distribute them to your client machines on your own. If you are upgrading existing Radia 2.x clients in a production environment, deploying this prerequisite service prior to deploying the client upgrade service is highly recommended.





If you have Windows 9.x machines in your environment, there is a Microsoft bug that prevents the upgrade from resuming its installation after the machine is rebooted when Windows Installer is installed. The best way to ensure that your Radia upgrade proceeds smoothly is to use this Radia service— Radia 4.0 Microsoft Windows Platform Prerequisites (RADIA4PR).

## Before you Begin

You will need the following materials and information, which can be found on the HP OpenView Radia v4 Applications CD.

- Determine the length of your ZCREATE field in the ZSERVICE Class. If your ZCREATE field is set to less than 70 characters, upgrade the Radia Configuration Server first before upgrading any clients (the Radia Client upgrade requires the ZCREATE field to be a minimum of 70 characters).

The following files are located in the `\migrate` folder.

- **R3201091.zip**  
Contains the updated Radpinit.exe module.
- **Radia4pr.zip**  
Contains the Radia Microsoft Windows Platform Prerequisites (RADIA4PR) service in the form of a Radia Service Export Deck.
- **Radia4htm.zip**  
Contains the Radia4.htm Web page.
- **PRDMAINT.zip**  
Contains the PRDMAINT.xpc and PRDMAINT.xpi Radia 4.0 client self-maintenance export decks for customers who chose not to upgrade the Radia Database first.

## What this chapter is about

This guide will take you through the necessary procedures to:

- Import the Radia Microsoft Windows Platform Prerequisites (RADIA4PR) service into your Radia Database.

- Configure the RADIA4PR service with the OS extensions that you need to distribute based on your environment.
- Update the Radia HTM page.

# Important Prerequisites

## Before upgrading 2.07/2.08/2.1 Clients

To ensure continued support of Radia 2.07, 2.08, and 2.1 clients by the Radia Configuration Server, use the client self-maintenance process to apply fix **R3201091** which contains the file, radpinit.exe, dated 05/16/01.



If your existing **radpinit.exe** is more recent than the fix date mentioned above, you do not need to apply the fix.

Applying this fix ensures that your Radia Configuration Server will support use of Radia 2.07, 2.08, 2.1, as well as 3.x clients.

For more information about client self-maintenance, see the *Radia Application Manager Guide* or the *Radia Software Manager Guide*.

## Upgrading Internet Explorer

The current Microsoft OS extensions for WMI and .NET require Microsoft Internet Explorer 5.01 or higher. See the Application Publishing Technote “Microsoft Internet Explorer 5.5” on HP’s Technical support Web site (for information about how to use Radia to distribute Internet Explorer to your client machines. Although this document was written for IE 5.5 SP1, you can use the same steps to distribute IE 5.01.

If you decide to upgrade to **Internet Explorer 5.5 SP2 or higher** and you are using the Radia Software Manager Client 2.x, the client *must* contain the Active X Control before you upgrade your browser. See the document kb01146 “MAINTENANCE: Radia Software Manager – ActiveX Control” on HP’s Technical Support site for information about how to update use the client self-maintenance process to update your clients.

# Importing the RADIA4PR Service to the Radia Database

The following is required only for version 2.x Radia Clients.

The Radia service, Radia Microsoft Windows Platform Prerequisites (RADIA4PR), contains four packages— the Radia 4.0 Install Rex package and three of Microsoft's OS extensions.

- **Radia 4.0 Install Rex**

This package contains the file MsOsExt.REX, which performs the installation of the Radia packages used to distribute Microsoft's OS extensions.

- **Radia 4.0 MSI**

This package contains Windows Installer (version 2.00.2600.0). Size: 1.62mb(9x) / 1.73mb(NT)

Like all Windows Installer applications, the Radia Client requires that Microsoft Windows Installer is resident on the client machine.

Please note the following links for Microsoft System Requirements:

NT/2000:

<http://www.microsoft.com/downloads/release.asp?releaseid=32832&NewList=1>

95/98:

<http://www.microsoft.com/downloads/release.asp?ReleaseID=32831>

- **Radia 4.0 WMI**

This package contains Windows Management Instrumentation (version 1.50.1085.0005). Size: 6.39mb

In support of the Radia Inventory Manager, Windows Management Instrumentation (also known as WMI) is required.

If you do not use the Radia Inventory Manager, it is not necessary to deploy this operating system extension to your client machines.

- **Radia 4.0 .NET**

This package contains Windows .NET Framework (version 1.1.4322). Size: 17.2mb

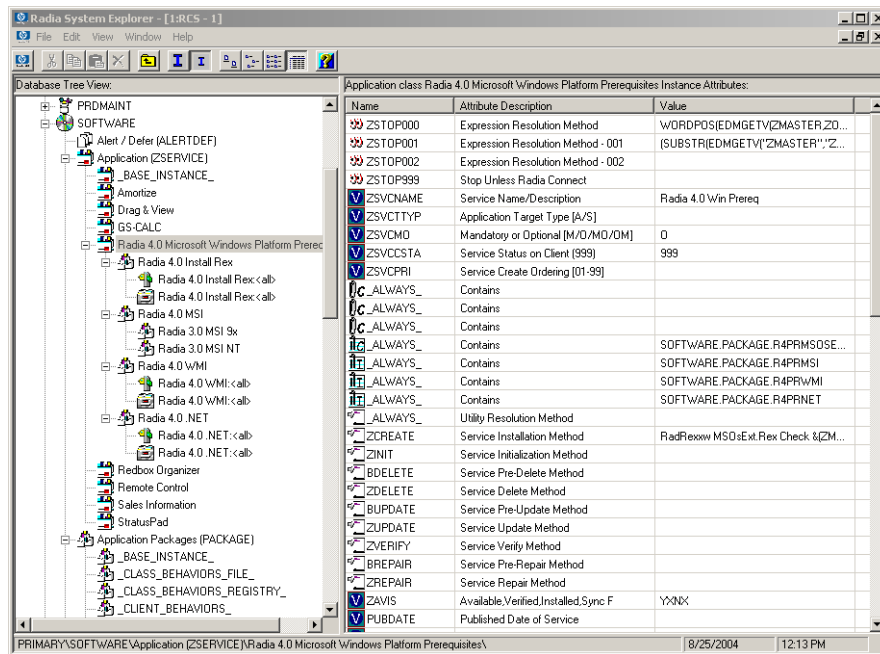
The functionality of the new Radia Software Manager user interface relies upon the .NET Common Language Runtime.

If you are not a Radia Software Manager user, it is not necessary to deploy this operating system extension to your clients.

## To import the RADIA4PR service into the Radia Database

- 1 Open **Radia4pr.zip** and extract the contents to the bin directory of your Radia Configuration Server (for example C:\Novadigm\ConfigurationServer\bin).
- 2 Use your standard procedure for importing a service into your Radia Database.
- 3 Go to **PRIMARY.SOFTWARE.ZSERVICE** to see the **Radia Microsoft Windows Platform Prerequisites (RADIA4PR)** service in your Database.

The following figure shows the service and has been expanded so you can see the packages that are connected to it.



# Configuring the RADIA4PR Service

Once you have imported the RADIA4PR service into your Radia Database, you must:

- Configure the service to include Microsoft's OS extension packages based on your client needs. After you connect the service to the appropriate clients, these packages will be delivered by default. If you do not want to distribute any of the OS extensions, manually remove the connection. See *Determining Client Needs* on page 14 and *Customizing the Packages Connected to the RADIA4PR Service* on page 16 for more information.
- Specify whether you want the service to check whether the version of Internet Explorer is lower than 5.01 on the client machines during installation of Microsoft's OS extensions. See *Checking the Version of Internet Explorer* on page 18 for more information.
- Distribute the RADIA4PR service to your target audience. See the *Radia Application Manager Guide* or the *Radia Software Manager Guide* for more information.

## Determining Client Needs

Use the following tables to help you determine your client needs based on the current Microsoft requirements.

**Table 1: Radia Application Manager Client**

	<b>95</b>	<b>98</b>	<b>NT</b>	<b>2000</b>	<b>XP</b>
Microsoft Windows Installer (MSI)	2.00.2600.0	200.2600.0	2.00.2600.0	2.00.2600.0	2.00.2600.0
Windows Management Instrumentation (WMI)	Not needed for RAM	Not needed for RAM	Not needed for RAM	Pre-installed	Pre-installed
Microsoft .NET Framework (.NET)	Not needed for RAM	Not needed for RAM	Not needed for RAM	Not needed for RAM	Not needed for RAM
Microsoft Internet Explorer (IE)	4.01 SP2 5.01 Recommended	5.01	4.01 SP2 5.01 Recommended	5.01 SP1	6.0

**Table 2: Radia Software Manager Client**

	<b>95*</b>	<b>98</b>	<b>NT</b>	<b>2000</b>	<b>XP</b>
Microsoft Windows Installer (MSI)	NA	2.00.2600.0	2.00.2600.0	2.00.2600.0	2.00.2600.0
Windows Management Instrumentation (WMI)	NA	Not needed for RSM	Not needed for RSM	Pre-installed	Pre-installed
Microsoft .NET Framework (.NET)	NA	1.0.3705	1.0.3705	1.0.3705	1.0.3705
Microsoft Internet Explorer (IE)	NA	5.01	5.01	5.01	6.0

\* This does not apply to computers running Windows 95 because the Radia Software Manager 3.x client is not available for computers running Windows 95, as it requires Microsoft's .NET runtime.



Windows Server 2003 is not reflected in these tables since it was not supported in Radia version 2.x. Most requirements for Windows XP will apply for Windows Server 2003.

**Table 3: Radia Inventory Manager Client**

	<b>95</b>	<b>98</b>	<b>NT</b>	<b>2000</b>	<b>XP</b>
Microsoft Windows Installer	2.00.2600.0	2.00.2600.0	2.00.2600.0	2.00.2600.0	Pre-installed
Windows Management Instrumentation	1.50.1085.0005	1.50.1085.0005	1.50.1085.0005	Pre-installed	Pre-installed
Microsoft .NET Framework	NA	Not Needed for RIM	Not needed for RIM	Not needed for RIM	Not needed for RIM
Microsoft Internet Explorer	5.01	5.01	5.01	5.01	6.0

## Customizing the Packages Connected to the RADIA4PR Service

By default, the three OS extension packages (MSI, WMI, and .NET) will be delivered to your client. Therefore, if you do not want to distribute an OS extension, manually remove the connection.



### **If you are distributing MSI to Windows 95 clients**

You must configure the service to reboot immediately after the installation. If you do not reboot the machine and then attempt to install an MSI application, undesirable effects may occur.

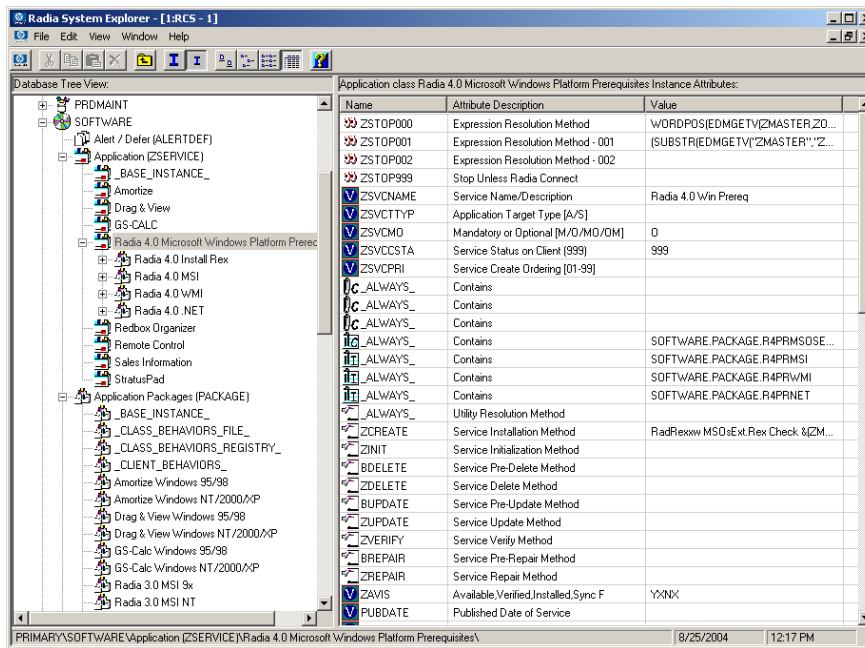
### **If you are distributing MSI and .NET to Windows 98 clients**

A reboot automatically occurs after MSI is installed. When the machine boots up again, the .NET installation continues.

To manually disconnect a Microsoft OS extension package from RADIA4PR

- 1 In the Radia System Explorer, go to **PRIMARY.SOFTWARE.ZSERVICE**.
- 2 Double-click **Radia Microsoft Windows Platform Prerequisites (RADIA4PR)**.

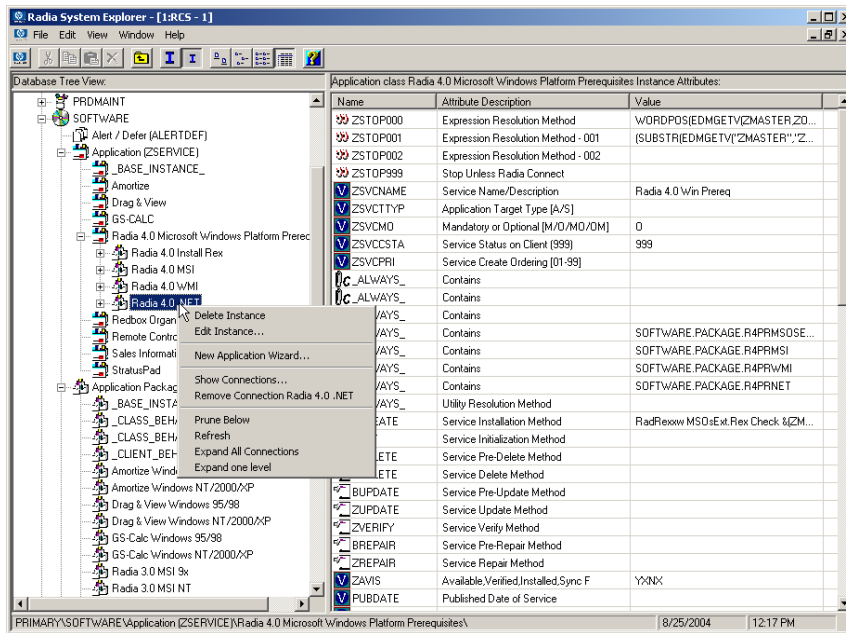




### 3 Right-click the package you want to disconnect.

- The package **Radia 4.0 MSI** represents Microsoft's Windows Installer extension.
- The package **Radia 4.0 WMI** represents Microsoft's Windows Management Instrumentation extension.
- The package **Radia 4.0 .NET** represents Microsoft's .NET extension.

A shortcut menu opens.



- 4 Select **Remove Connection** *package name*.
- 5 Click **Yes** to confirm that you want to remove the connection.
- 6 Repeat this procedure as necessary.

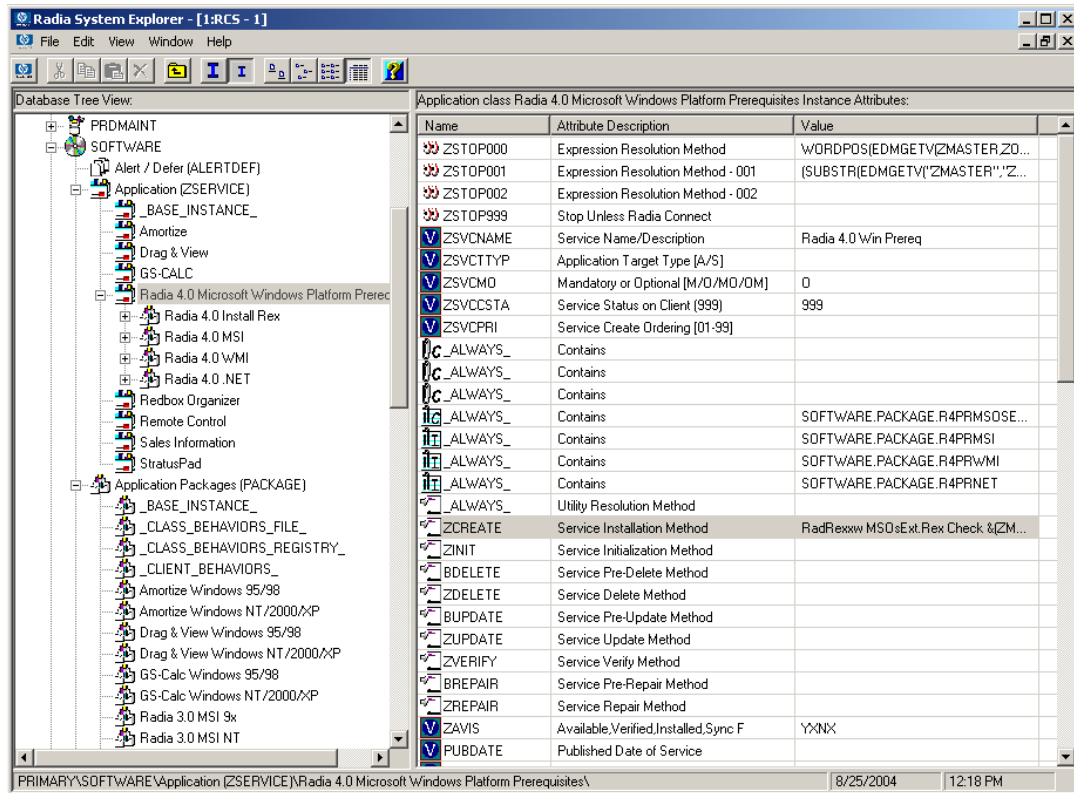
## Checking the Version of Internet Explorer

Next, specify whether you want the RADIA4PR service to check whether the version of Internet Explorer is lower than 5.01 on the client machines during installation of Microsoft's OS extensions.

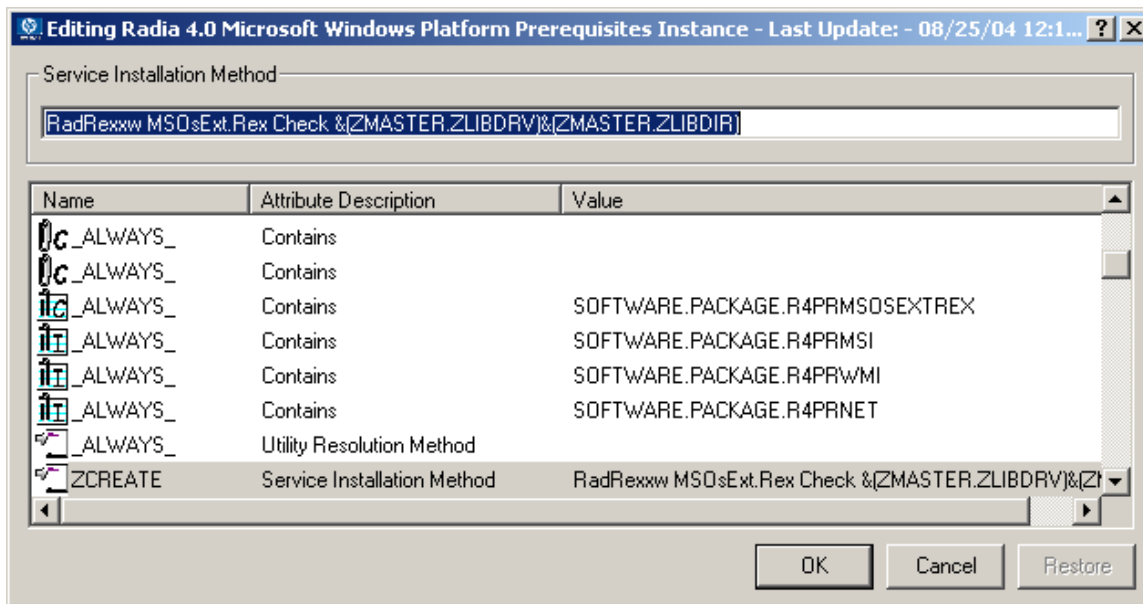
The service uses the REXX method, **MsoExt.rex** to check the version of Internet Explorer. If the version of Internet Explorer is 5.01 or higher, the installation continues. If the version of Internet Explorer is less than 5.01, the installation stops and a warning message is written to the MsiOsExt.log (located in the LOG directory on the client machine, by default, *SystemDrive*:\Program Files\Novadigm\LOG) indicating that Internet Explorer does not meet the minimum requirement of 5.01.

To specify whether you want to check the version of Internet Explorer

- 1 In the Radia System Explorer, go to **PRIMARY.SOFTWARE.ZSERVICE**.
- 2 Click **Radia Microsoft Windows Platform Prerequisites (RADIA4PR)**.
- 3 In the right-hand pane, go to the ZCREATE (Service Installation Method).



- 4 Double-click **ZCREATE**.



Notice that the value is  
 RadRexxw MSOsExt.Rex CheckIE  
 &(ZMASTER.ZLIBDRV)&(ZMASTER.ZLIBDIR)

- CheckIE (in the above line) enables MsOsExt.rex to check whether Internet Explorer is version 5.01 or lower.
- Change CheckIE to NoIEchk to disable version checking for Internet Explorer.



It is recommended that you use the CheckIE parameter if you are deploying .NET or WMI, as Internet Explorer 5.01 is a requirement.

- 5 If you modified the value, click **OK** to close the **Editing Instance** dialog box and then click **Yes** to confirm your changes when prompted.

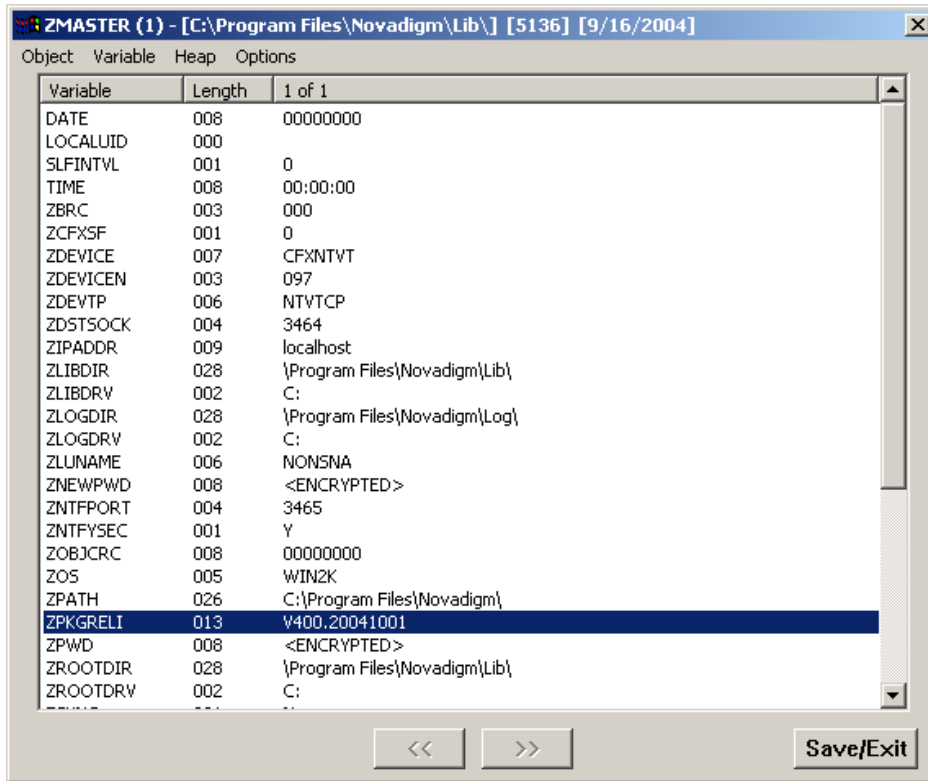
## Deploying the RADIA4PR Service

Finally, you will need to determine a deployment policy to distribute the service out to your client computers. See the *Radia Application Manager Guide* or the *Radia Software Manager Guide* for more information.

## Removing the RADIA4PR service

The RADIA4PR service is a Radia service that will be used only one time—when you are distributing Microsoft’s OS extensions in preparation for your Radia upgrade. After this service has been distributed to your users and your Radia Client upgrade is complete, it is removed from your Radia Database using a ZSTOP expression included with the service.

In addition, when the upgrade is complete, the value of the ZPKGRELI variable in the ZMASTER object (located by default in *SystemDrive:\Program Files\Novadigm\LIB*) on the client computer is automatically updated to the current version and install build date (for example V400.20041001).



**Figure 1: ZMASTER object.**

The next time that the Radia Client connects to the Radia Configuration Server, a method checks this setting and then removes the RADIA4PR service from the Radia Database, which removes all of the installation materials.

# The Radia4.htm Page

The Radia4.htm page supports existing Radia clients as well as the new Radia 4.0.1 clients. This page will redirect any Radia 2.x clients to the original Radia1.htm page, while Radia 3.x and 4.x clients will use the new Radia4.htm page.

## Updating the Radia HTM Page

- 1 On your Web server, go to *SystemDrive:\inetpub\wwwroot\RADIA\* and find the Radia 2.X Web page (by default the filename is **Radia1.htm**).
- 2 Rename this file to **Radia2x.htm**.
- 3 Extract **Radia4.htm** from **Radia4.htm.zip** to *SystemDrive:\inetpub\wwwroot\RADIA\*.
- 4 Use a text editor to open **Radia4.htm**.
- 5 Modify the following path and filename to redirect the Radia 2.07, 2.08 and 2.1 clients to the original Web page (now called radia2x.htm).  

```
window.location.replace("http://Server_Name/Radia/Radia2.HTM");
```
- 6 If necessary, modify the path in the following line:  

```
<PARAM NAME="StartupFile" VALUE=" Server_Name/Radia/Args.XML ">
```
- 7 Save and close the file.

Now, your Radia client computers are ready for the Radia Client upgrade.





## 2 Upgrading Your Radia Clients

Use the information in this chapter to upgrade your Radia Clients to version 4.0.1.

### Before you begin:

- Ensure that your Radia Configuration Server supports the use of Radia 2.x as well as 3.x clients.
- Ensure that your Radia Web pages support existing Radia 2.x and 3.x clients
- Prepare your Windows 95, 98, NT, 2000, or XP environment for your upgrade to the Radia 4.0.1 client

### Where to find the upgrade materials

You will also need to have the following materials for the upgrade, which are located on the HP OpenView Radia v4 Applications CD in the **\migrate** folder.

#### Radia Client Upgrade Materials

- In the form of a Radia Client installation service  
Stored in **\migrate\export\_deck\win32**
  - **SOFTWARE\_ZSERVICE\_RADIA401.XPI**  
The Radia Client instance export deck.
  - **SOFTWARE\_ZSERVICE\_RADIA401.XPR**  
The Radia Client resource export deck.
- Standard installation:

- **Setup.exe**  
If the client does not exist, this file launches the standard client installation. If a previous version of the Radia client is detected, this file launches upgrdmaint.exe.
- **Upgrdmaint.exe**  
Performs the client upgrade.
- **Radia401.msi**  
The MSI Database file, which contains the default configuration information for the installation and the client components.
- **Install.ini**  
Customizes the installation or Radia Client arguments file.
- Sub-directories for dotnet, maint, msi, samples, and wmi

See the Radia Application Manager Guide for Windows or the Radia Software Manager Guide for Windows for more information about these files.

## System Requirements for the Radia Client 4.0.1

- Windows 9X, Windows NT 4 with Service Pack 6a, Windows 2000, Windows XP, or Windows Server 2003.



The Radia Software Manager 3.x and above client for Windows requires Microsoft's .NET runtime and is therefore not available for computers running Windows 95.

- A minimum of 30 MB free hard disk space.
- TCP/IP connection to a computer running the Radia Configuration Server.
- For Windows NT, 2000 or XP, you must have administrator rights to the computer to install the Radia Clients.

# About the Recommended Upgrade Process

The following is a recommendation for the upgrade process. Following this process ensures that you have the appropriate Radia Database support in order to take advantage of the new features that are available throughout the rest of the Radia infrastructure.



Before beginning the upgrade process, we recommend you take the normal precautions and back up your production environment as needed prior to applying the upgrade.

- **Use the Radia Upgrade Preparation Materials to prepare your Radia Clients and your Radia Database.**

The Radia Upgrade Preparation Materials contain:

- An optional Radia service that can be used to distribute .NET, WMI, and/or Windows Installer to your client computers *before* you upgrade your Radia environment. Microsoft requires that their operating systems be upgraded with later versions of the operating system extensions that are currently available from Microsoft such as .NET, WMI, and Windows Installer. Refer to Chapter 1 of this guide for more information.
- The Verify Database Utility that checks the status and integrity of the elements in your Database before you perform the upgrade. See the Radia Configuration Server and Radia Database upgrade guides for more information.
- Although this can be considered an additional step, we strongly recommend you consider using these materials prior to beginning your upgrade.

- **Upgrade your Radia Configuration Server.**

Upgrade your Radia Configuration Server. The Radia Configuration Server is backward compatible. Refer to the Radia 4.0.1 migration documentation located on the Radia Configuration Server CD.

- **Upgrade your Radia Database.**

Upgrade your Radia Database to use the new features in Radia 4.0.1. Refer to the *Radia Database Upgrade Guide* available on

the Radia Configuration Server CD for instructions on upgrading your Radia database.

- **Upgrade your Radia Clients.**  
Upgrade your Radia Application Manager, Radia Software Manager, Radia Inventory Manager and Dual Mode (if using both unattended and user catalog-based software management services) clients.
- **Upgrade your Radia Administrator Workstation.**  
Upgrade your Radia Administrator Workstation by removing the previous version and installing the new version. It is strongly recommended that you upgrade your Administrator Workstation *after* upgrading your clients. Refer to the Radia Administrator Workstation migration material located on the Radia Infrastructure CD.

## About the Radia Client Upgrade

There are several ways to upgrade your Radia clients:

- Use the Radia Client installation service (*recommended*)  
Use the Radia Client installation service to distribute the client upgrade.



This service does not contain the operating system extensions required by Microsoft. If the appropriate pre-requisites do not exist on the client machine, the installation will fail.

- Use the standard installation media  
Use the standard installation media to upgrade a machine in your lab environment. The Radia Client upgrade installation contains the standard installation files, as well as the upgrade file. When you run the installation, a standard installation is performed or, if it detects the existence of a previous client version, it launches the upgrade installation. Existing client object attributes are maintained and the client version information is updated to reflect version 4.0.1.

For information about using the standard installation, see the *Radia Application Manager Guide* or the *Radia Software Manager* for more information about these files.

- Run the upgrade from a network drive (Windows only)  
To run the upgrade from a network drive, use the following command line  
`setup.exe /runlocal`

This copies the contents of the upgrade to the local drive and performs the installation.



The /ASYNC switch is required when setup.exe is called from the ZCREATE method to upgrade a Radia Client. This ensures that setup.exe calls Upgrdmaint.exe in an asynchronous mode allowing Upgrdmaint.exe to perform the necessary cleanup tasks for the upgrade process without having to report a completion status to Setup.exe. This allows Setup.exe, Upgrdmaint.exe and Radconct.exe to function independently without becoming locked.

## Upgrading the Radia Client for Windows

This section describes how to perform the upgrade using the export decks (SOFTWARE\_ZSERVICE\_RADIA401.XPI and SOFTWARE\_ZSERVICE\_RADIA401.XPR).

### Importing the Export Decks

In order to distribute the Radia client upgrade as a Radia service, you must import the Radia Client installation service into the Radia Database.

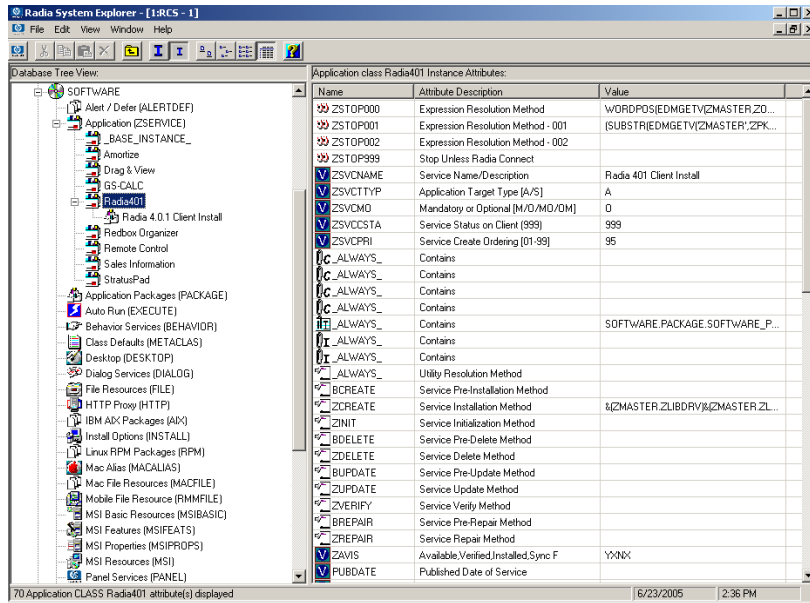
To import the export decks

- 1 Stop the Radia Configuration Server service.
- 2 Copy **SOFTWARE\_ZSERVICE\_RADIA401.XPI** and **SOFTWARE\_ZSERVICE\_RADIA401.XPR** into your Radia Configuration Server's \bin directory.

- 3 Open a command prompt.
- 4 Change the directory to your Radia Configuration Server's \bin directory. For example, C:\HP\ConfigurationServer\bin.
- 5 Type:

```
ZEDMAMS  
VERB=IMPORT_INSTANCE, FILE=SOFTWARE_ZSERVICE_RADIA401.XPI  
, PREVIEW=NO.
```
- 6 Press ENTER.
- 7 Review the ZEDMAMS.LOG to ensure that there were no errors, and that your import completed with RC 0.
- 8 When the instances have been imported, type:

```
ZEDMAMS  
VERB=IMPORT_RESOURCE, FILE=SOFTWARE_ZSERVICE_RADIA401.XPR  
, PREVIEW=NO.
```
- 9 Press ENTER.
- 10 Review the ZEDMAMS.LOG to ensure that there were no errors, and that your import completed with RC 0.
- 11 Close the command prompt.
- 12 Start the Radia Configuration Server and use the Radia System Explorer to view the new service, **Radia 4.0.1**, in **PRIMARY.SOFTWARE.ZSERVICE**.

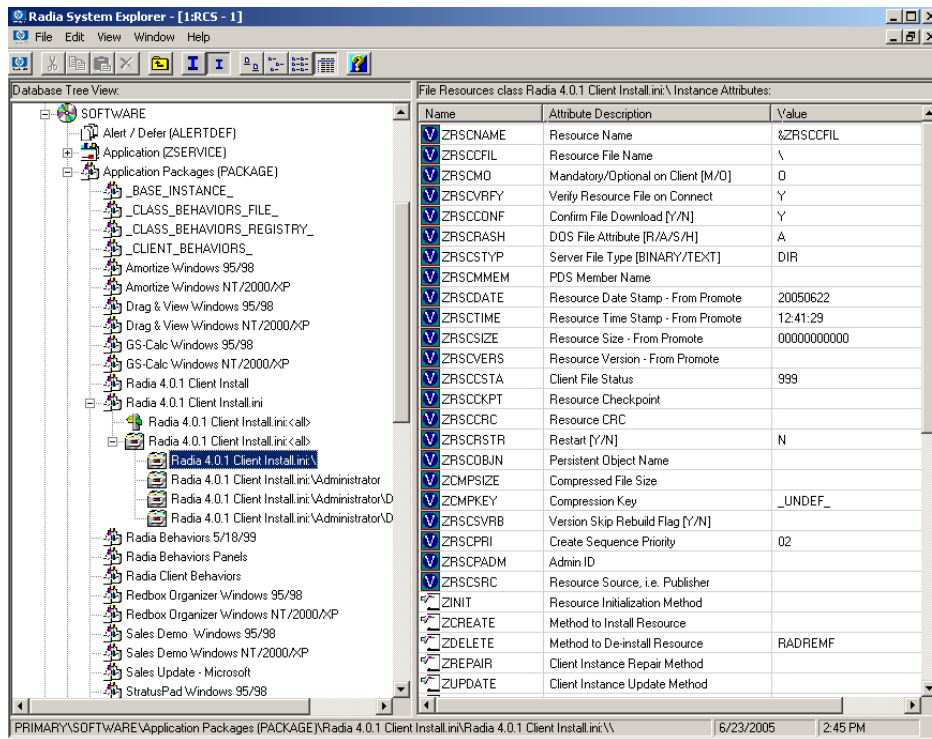


**Figure 2: Radia 4.0.1 service.**

## Configuring the Radia Client Installation Service

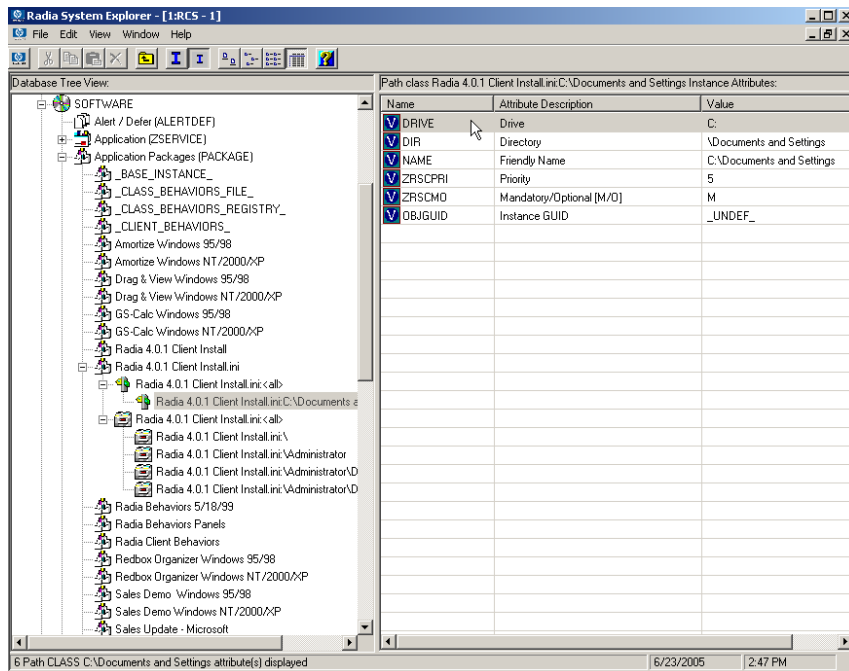
To configure the Radia Client Installation service

- 1 Configure the sample `INSTALL.INI` for your environment. See the *Radia Application Manager Guide for Windows* or the *Radia Software Manager Guide for Windows* for more information.
- 2 Use the Radia Packager's Component Selection Mode to promote `INSTALL.INI`.
  - Type **RADIA401CLIENT** as the package name and **Radia 4.0.1 Client Install.ini** as the description.
- 3 In the Radia System Explorer, go to the package instance (`PRIMARY.SOFTWARE.PACKAGE`) for **Radia 4.0.1 Client Install.ini**.

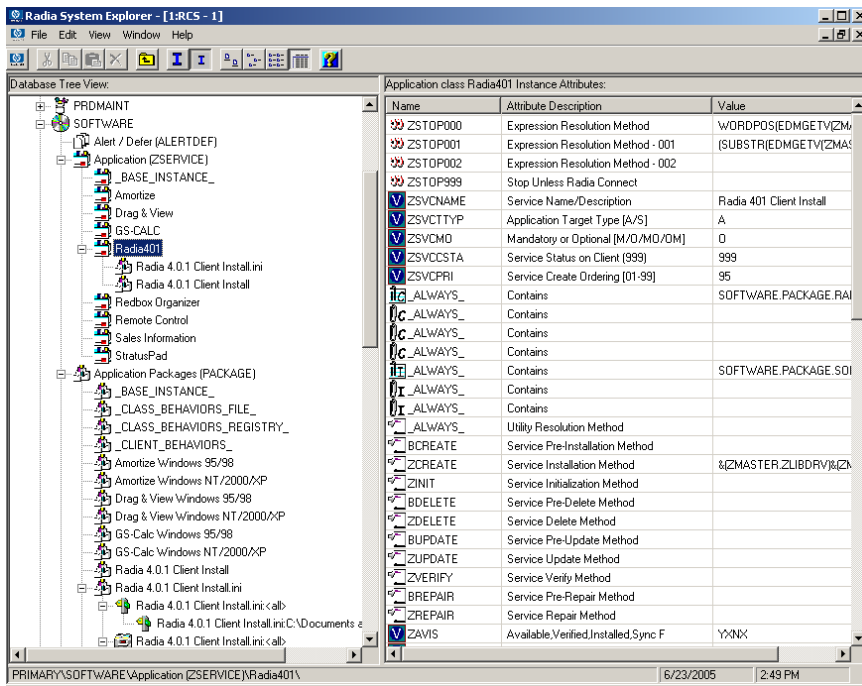


- 4 In the right-hand pane double-click **ZRSCCFIL**.
- 5 In the **Editing Instance** dialog box, type the value **install\install.ini**.
- 6 Click **OK**, and then click **Yes** to confirm your changes.
- 7 In the Path instance for **Radia 4.0.1 Client Install.ini**, double-click **DRIVE**.





- 8 In the **Editing Instance** dialog box, set the value of **DRIVE** to **&(ZMASTER.ZLIBDRV)**.
- 9 Click **DIR** and set the value to **&(ZMASTER.ZLIBDIR)**.
- 10 Click **OK**, and then click **Yes** to confirm your changes.
- 11 Connect this new package to the **Radia401** service in **PRIMARY.SOFTWARE.ZSERVICE**.



12 Connect the service to the appropriate users for distribution. See the *Radia Application Manager Guide for Windows* or the *Radia Software Manager Guide for Windows* for more information.

After the service is distributed to a user and the version 4.0.1 upgrade is complete, the service will no longer be available to the user and is automatically removed from the desktop in order to save disk space. A ZSTOP expression exists in the Radia401 Application (ZSERVICE) instance, which evaluates to TRUE after the client is upgraded to version 4.0.1. Once this expression evaluates to TRUE, the temporary service folder and the client installation files are removed