

HP OpenView Configuration Analyzer Using Radia

for the Windows operating system

Software Version: 4.1

Installation and Configuration Guide

Manufacturing Part Number: T3424-90086

June 2005



Legal Notices

Warranty

Hewlett-Packard makes no warranty of any kind with regard to this document, including, but not limited to, the implied warranties of merchantability and fitness for a particular purpose. Hewlett-Packard shall not be held liable for errors contained herein or direct, indirect, special, incidental or consequential damages in connection with the furnishing, performance, or use of this material.

A copy of the specific warranty terms applicable to your Hewlett-Packard product can be obtained from your local Sales and Service Office.

Restricted Rights Legend

Use, duplication, or disclosure by the U.S. Government is subject to restrictions as set forth in subparagraph (c)(1)(ii) of the Rights in Technical Data and Computer Software clause in DFARS 252.227-7013.

Hewlett-Packard Company
United States of America

Rights for non-DOD U.S. Government Departments and Agencies are as set forth in FAR 52.227-19(c)(1,2).

Copyright Notices

© Copyright 2005 Hewlett-Packard Development Company, L.P.

No part of this document may be copied, reproduced, or translated into another language without the prior written consent of Hewlett-Packard Company. The information contained in this material is subject to change without notice.

Trademark Notices

Linux is a registered trademark of Linus Torvalds.

Microsoft®, Windows®, and Windows® XP are U.S. registered trademarks of Microsoft Corporation.

OpenLDAP is a registered trademark of the OpenLDAP Foundation.

Acknowledgements

PREBOOT EXECUTION ENVIRONMENT (PXE) SERVER
Copyright © 1996-1999 Intel Corporation.

TFTP SERVER

Copyright © 1983, 1993

The Regents of the University of California.

OpenLDAP

Copyright 1999-2001 The OpenLDAP Foundation, Redwood City, California, USA.

Portions Copyright © 1992-1996 Regents of the University of Michigan.

OpenSSL License

Copyright © 1998-2001 The OpenSSLProject.

Original SSLeay License

Copyright © 1995-1998 Eric Young (eay@cryptsoft.com)

DHTML Calendar

Copyright Mihai Bazon, 2002, 2003

Support

Please visit the HP OpenView support web site at:

<http://www.hp.com/managementsoftware/support>

This web site provides contact information and details about the products, services, and support that HP OpenView offers.

HP OpenView online software support provides customer self-solve capabilities. It provides a fast and efficient way to access interactive technical support tools needed to manage your business. As a valuable support customer, you can benefit by using the support site to:

- Search for knowledge documents of interest
- Submit enhancement requests online
- Download software patches
- Submit and track progress on support cases
- Manage a support contract
- Look up HP support contacts
- Review information about available services
- Enter discussions with other software customers
- Research and register for software training

Most of the support areas require that you register as an HP Passport user and log in. Many also require a support contract.

To find more information about access levels, go to:

http://www.hp.com/managementsoftware/access_level

To register for an HP Passport ID, go to:

<http://www.managementsoftware.hp.com/passport-registration.html>

Contents

- 1 Introduction 7
 - The Configuration Analyzer.....8
 - Overview8
 - Generating State Files.....10
 - Starting the Configuration Analyzer11
 - Setting the App Login ID12
 - Summary14

- 2 Installing the Configuration Analyzer 15
 - System Requirements.....16
 - Configuration Analyzer System Requirements.....16
 - Radia Application Knowledge Base Requirements.....16
 - Installing the Configuration Analyzer16
 - Defining a Radia Application Knowledge Base29
 - Microsoft SQL Server.....29
 - Oracle31
 - Summary33

- 3 Configuration Analyzer Settings 35
 - Configuration Analyzer Administrator Console36
 - Setting Options.....37
 - Display Tab Options38
 - Comparison Tab Options.....39
 - Managing Radia Application Knowledge Base Permissions41
 - Default Radia Application Knowledge Base Access Rights and Structures41
 - Creating Radia Application Knowledge Base User IDs42
 - Choosing the Role, User ID, Workspace, and Workspace Owner.....42
 - Enabling All Roles, Users, Workspaces, and Workspace Owner Access42

| | |
|---|-----------|
| Enabling Workspace Creation for a User | 43 |
| Access Rights of the Workspace Owner | 43 |
| Assigning Specific Access Rights to Users..... | 43 |
| Access Rights for Shared Objects | 44 |
| Sample Implementation Guidelines..... | 44 |
| Summary..... | 46 |
| 4 Using the Configuration Analyzer | 47 |
| Populating the Radia Application Knowledge Base..... | 48 |
| Creating a Workspace | 48 |
| Creating a Project..... | 49 |
| Importing a State | 51 |
| Viewing State Information | 54 |
| Analyzing State Files..... | 56 |
| Adding and Removing States from the Analysis..... | 58 |
| Saving and Loading an Analysis | 59 |
| Generating a Report | 61 |
| Summary..... | 63 |
| 5 Generating State Files | 65 |
| Generating State Files with the Radia State Generator | 66 |
| Creating a Before State File..... | 66 |
| Creating an After and Delta State..... | 71 |
| Building Radia State Files with the System Explorer | 77 |
| State File Creation Process | 78 |
| Summary..... | 83 |
| Glossary | 85 |
| Index..... | 91 |

1 Introduction

At the end of this chapter, you will:

- Understand the Configuration Analyzer and its uses.

The Configuration Analyzer

The Configuration Analyzer allows you to view, store, and compare patches and application data. Application or Patch data is imported into the Configuration Analyzer in the form of state files. State files represent the current state of an application, either before or after an installation or when any modifications to that application are made. These state files are contained within the Radia Application Knowledge Base, a database you configure using either Microsoft SQL Server or Oracle.

The Configuration Analyzer Administrator console provides you with the tools you need to begin your analyses.

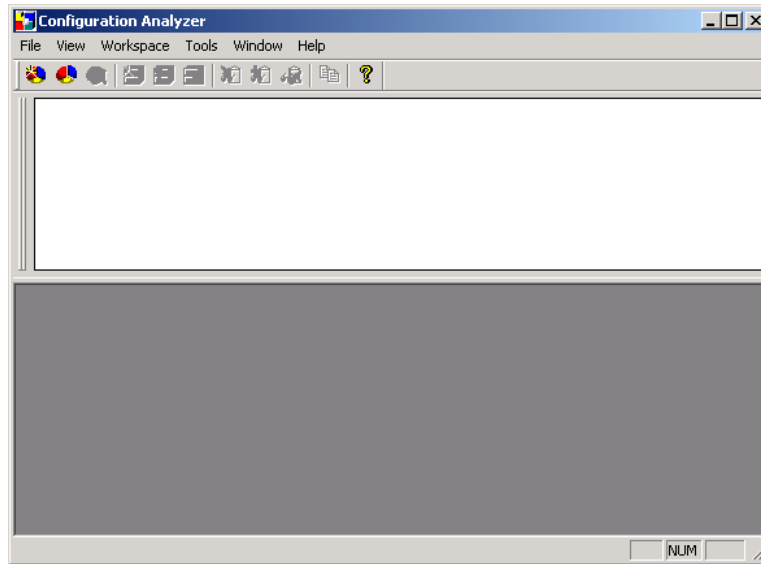


Figure 1: Configuration Analyzer administrator console.

Overview

The Configuration Analyzer administrator console simplifies your view of application management. Backed by the Radia Application Knowledge Base database, imported state files keep a detailed history of all of the resources needed by an application to run successfully. With a click of the mouse, powerful features of the console identify conflicts between two or more

applications. With this historical and complete set of information at your fingertips, you can easily determine the impact on your environment of:

- Deploying a new application.
- Upgrading an existing application.
- Adding or modifying modules, registry keys, and data files.

The Configuration Analyzer performs integration and management analysis functions. Administrators can profile applications, initiate application comparisons or views, analyze applications, populate the Radia Application Knowledge Base, and establish and manage Radia Application Knowledge Base Permissions.

The Configuration Analyzer is the focal point for viewing and analyzing application and machine state data in your environment. Some of the features are:

- Import of Knowledge Sources, including:
 - Machine Scan and Application Installation state files.
 - Application Execution Profile, Trace, Impact, Intersection, and Union state files.
 - Other Radia product sources.
- Radia Application Knowledge Base Management and Permissions:
 - Provides a facility for describing various workstation configurations. This allows the administrator to group applications to reflect different departmental requirements.
 - To minimize database security administration, all users have access to Configuration Analyzer functions unless otherwise restricted by the Radia Application Knowledge Base administrator. The administrator may use the Permissions facility of the Configuration Analyzer to establish Radia Application Knowledge Base permissions that limit access to Workspace Projects and States. Access rights are granted based on a Workspace name for the combination of database Role and User ID.
- Viewing of Application and Machine State Details:
 - View any state file type
 - Machine configuration components
 - Application execution processing
 - Application installation processing

- Application component and resource profile state details containing all pertinent information about module files, data files, registry, and security settings
- Viewing of Application and Machine Analysis:
 - Obtain a comparative analysis for module files, data files, and registry settings.
 - View a color-coded conflicts display.
 - View the components and resources shared by two or more applications or desktop configurations.
 - View all potential and real conflicts between two or more applications or desktop configurations.
 - View the non-shared components between two or more applications or desktop configurations.
 - View desktop configurations that reference one or more specific resources and may be affected by the installation of a new application or a new version of an existing application.
 - Search the database using built-in search functions with integrated Save and Print of generated reports.

Generating State Files

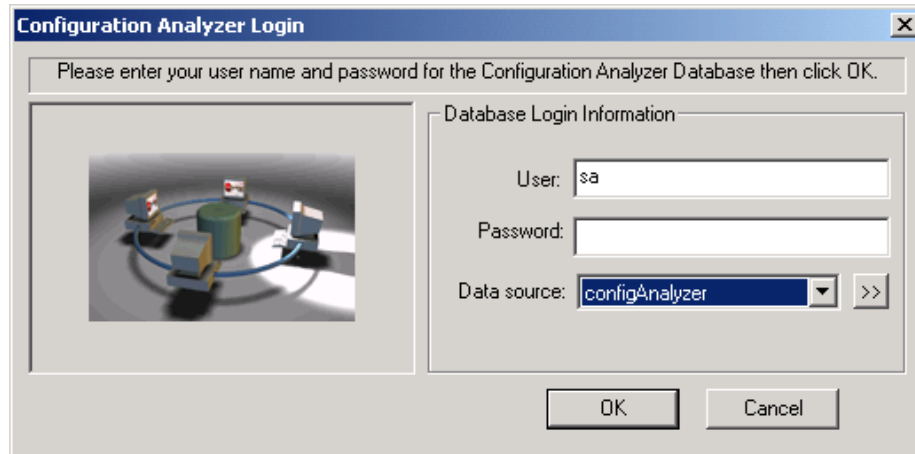
In order to analyze data with the Configuration Analyzer, you must have data in the form of a state file. State files are generated by different Radia Products, including the Radia Packager for Windows Installer, Usage Manager, Radia Patch Manager and the System Explorer. Refer to the product specific guides for more information about how to create state files with that product.

Additionally, state files can be created using the Radia State Generator, which is shipped along with the Configuration Analyzer. Use this component to create state files of your own applications without the use of any other Radia products. The process of creating state files with the Radia State Generator is explained in Chapter 5, Generating State Files.

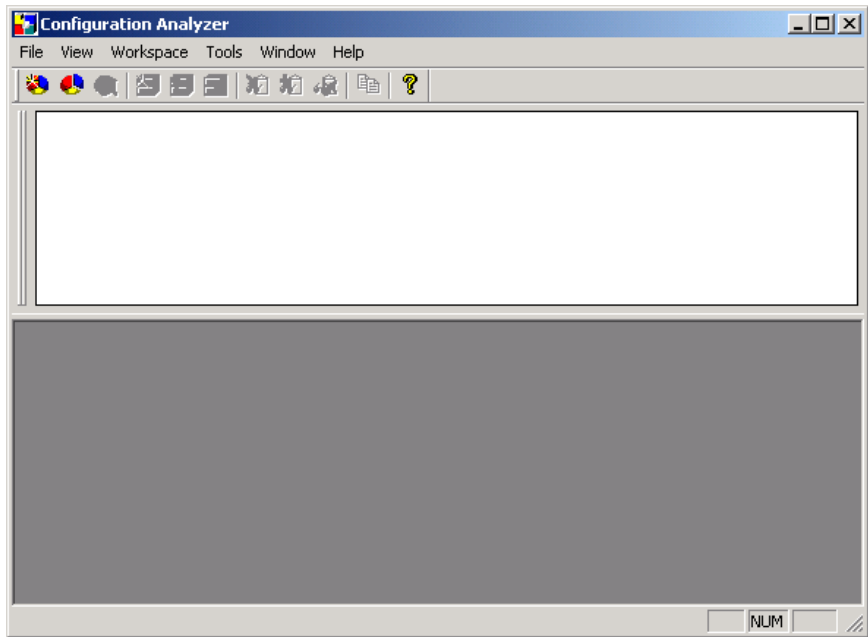
Starting the Configuration Analyzer

To log on to the Configuration Analyzer

- 1 Go to **Start**→**Programs**→**Novadigm**→**Configuration Analyzer** or double-click the Configuration Analyzer icon on your desktop.



- 2 In the **User** text box, type your user name.
- 3 In the **Password** text box, type your password.
- 4 In the **Data Source** drop-down list, select the appropriate Data Source Name you created.
- 5 Click **OK**.
The Configuration Analyzer opens.



Setting the App Login ID

The first time you log in to the Configuration Analyzer, you will be presented with a text box alerting you that no application login exists, as seen in the figure below.

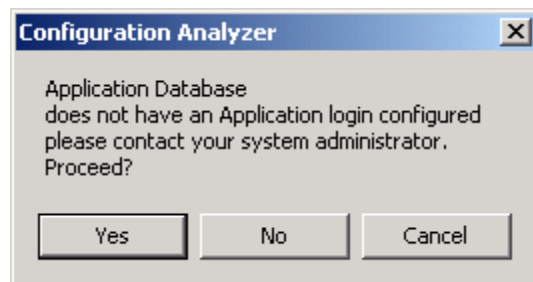


Figure 2: No application login set text box.

The Radia Application Knowledge Base administrator must supply a login ID and password that all users of the database will use when connecting to the database. This ID must have full access rights to the database objects including table and stored procedures.

To set this ID, use the **File\Permissions** menu and click **Set Application Login**.

The ID used is typically the sa ID for SQL Server or Radia for Oracle. Clicking **Yes** updates the Application Knowledge Base table AppLogin, which defines an administrator ID and password that have full database owner authority. This does not have to be the sa ID.

The AppLogin ID is used for all access to the database, both by the Configuration Analyzer apps and the Radia Knowledge Base Manager. A single AKBADMIN ID is all that is needed for definition in the database AppLogin table. Individual users can be given IDs that have limited authority since the privileged database work is done under the account defined in the AppLogin table.

Summary

- The Configuration Analyzer allows you to view, store, and compare application data.
- The Configuration Analyzer uses state files to access application data.

2 Installing the Configuration Analyzer

At the end of this chapter, you will:

- Understand the Configuration Analyzer system requirements.
- Be able to install and configure the Configuration Analyzer.
- Be able to set up your Radia Application Knowledge Base.

System Requirements

Configuration Analyzer System Requirements

- 128 MB RAM minimum, 256 MB or above preferred.
- Windows NT, 2000, 2003 Server.

Radia Application Knowledge Base Requirements

- Oracle 8i or 9i
- Microsoft SQL Server 7.0 or 2000

Installing the Configuration Analyzer

The installation and configuration of the Configuration Analyzer is comprised of three mandatory steps as well as one optional step. They are:

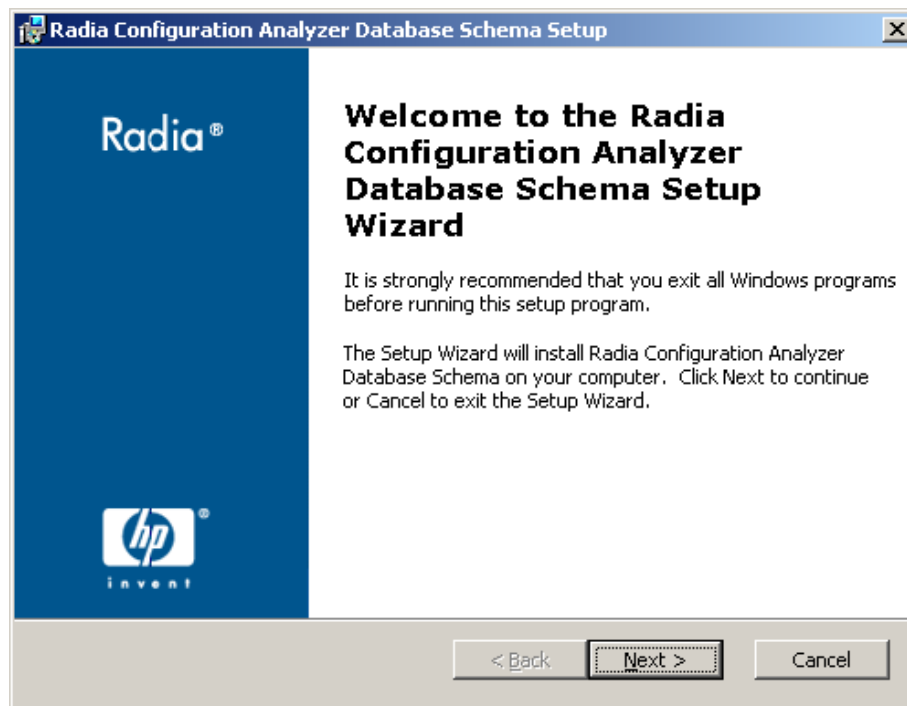
- 1 Install the Configuration Analyzer database schema.
- 2 Create an ODBC DSN connection to your database.
- 3 Install the Configuration Analyzer.
- 4 Install the Radia State Generator (optional).

Task 1 Installing the Configuration Analyzer Database Schema

The Radia Configuration Knowledge Base requires specific tables as part of its database schema. You can add these tables to an existing database, or define a new database (recommended).

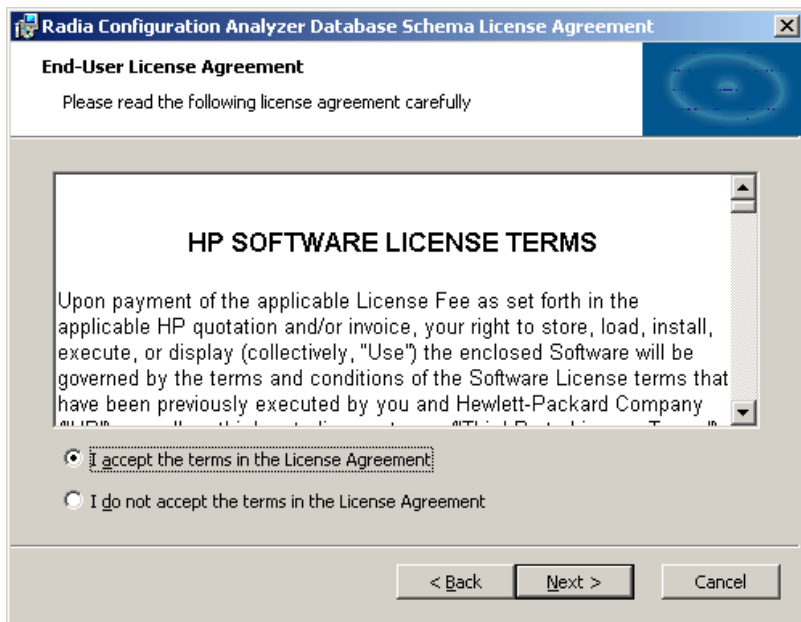
To install the database schema

- 1 On the installation media, open the Configuration Analyzer Database Schema folder.
- 2 Double-click **Package.msi**.
The Welcome dialog box opens.

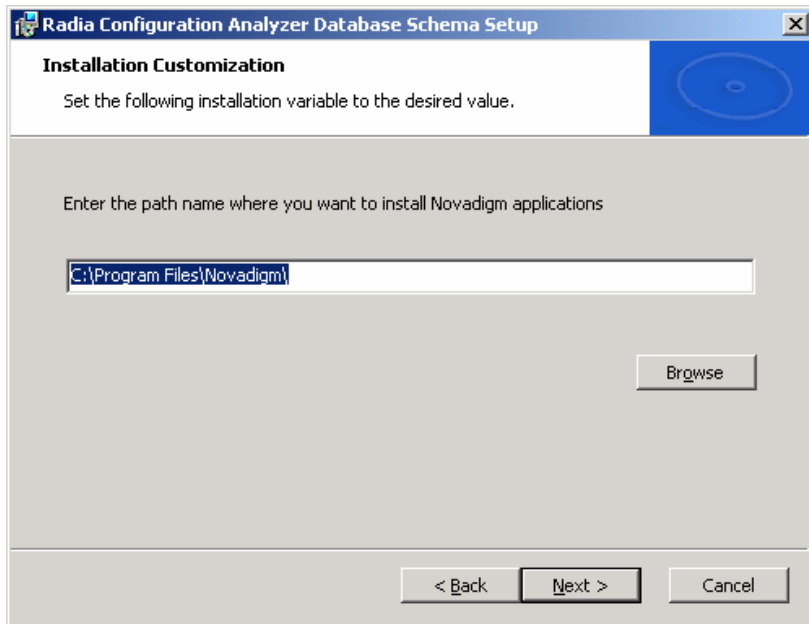


- 3 Click **Next**.

The End-User License Agreement window opens.



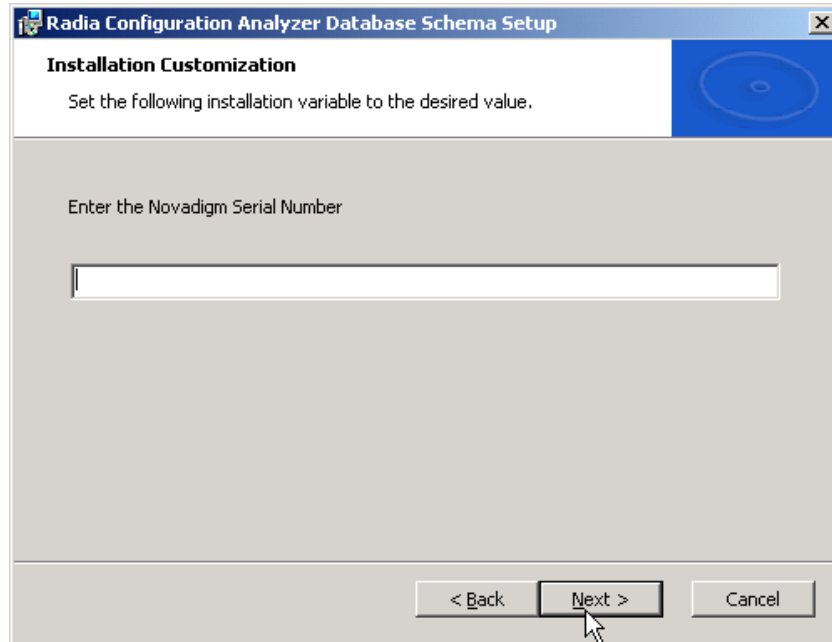
- 4 Read and accept the HP Software License Terms and click **Next**. The Install Location dialog box opens.



By default, the database schema is installed to the `Program Files\Novadigm` directory. If this directory already exists, this step is skipped.

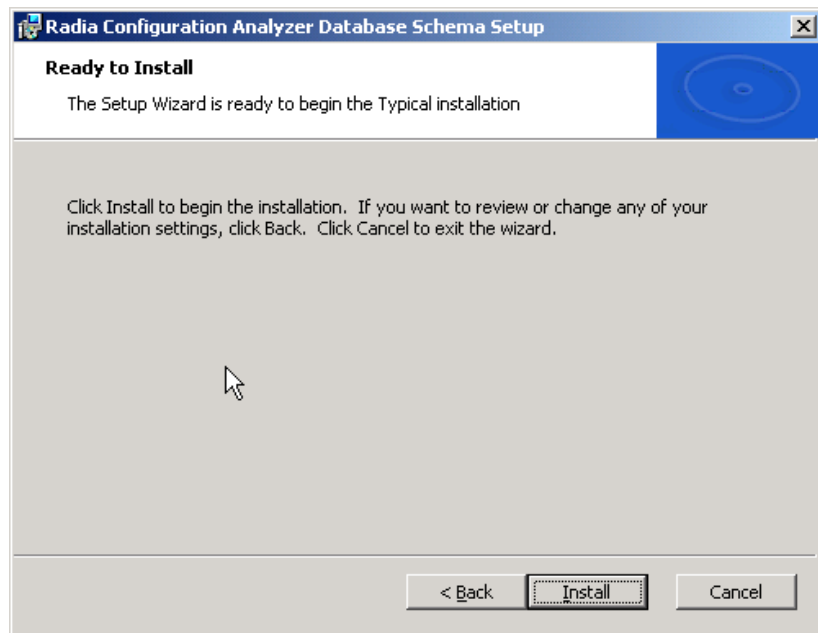
- 5 Click **Next**.

The Serial Number dialog box opens.



- 6 Enter your serial number, and click **Next**.

The Ready to Install dialog box opens.



7 Click **Install**.

8 When the installation is finished, click **Finish**.

The Configuration Analyzer Database Schema setup is complete.

Task 2 Create an ODBC DSN Connection

An ODBC DSN connection to your Radia Application Knowledge Base database is required. Create this connection on the computer where you will install the Configuration Analyzer. If you need assistance creating an ODBC DSN connection, see your database or system administrator.

To create an ODBC DSN connection for the Configuration Analyzer

- In the Windows Control Panel, use the Administrative Tools option to create the connection. If you require assistance creating an ODBC DSN connection, see your system or database administrator. Make sure you test the connection when you are finished.
- The ODBC Data Source will be displayed in the ODBC Data Source Administrator list of System DSNs.

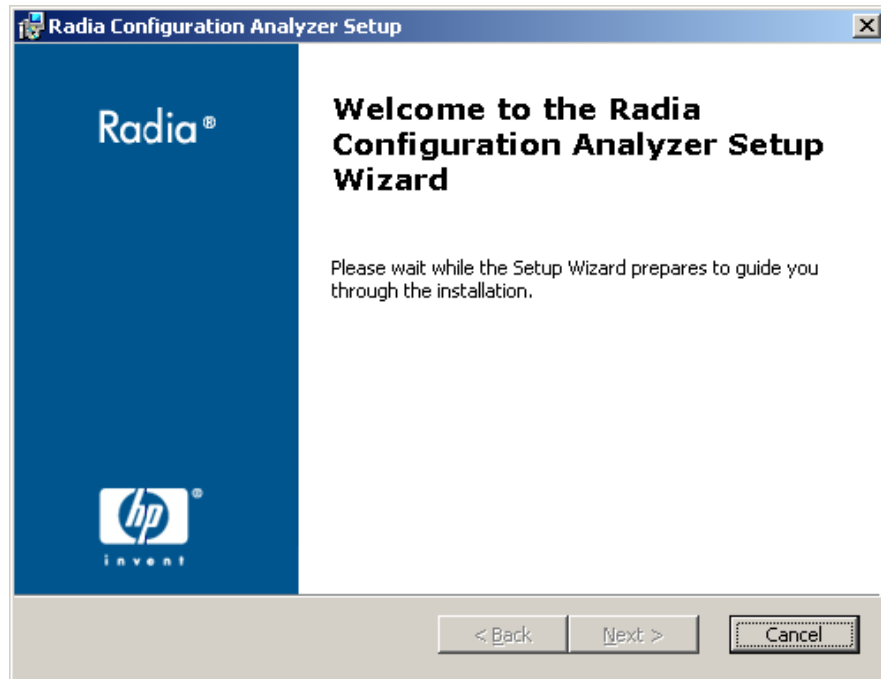
Make sure you create the correct connection type depending on the type of database you are using (SQL Server or Oracle).

- ▶ If you are creating an ODBC DSN connection for Oracle, the Oracle client must be installed on the computer you are using to make the connection.

Task 3 Installing the Configuration Analyzer

To install the Configuration Analyzer

- 1 On the Configuration Analyzer media, double-click **Package.msi**.



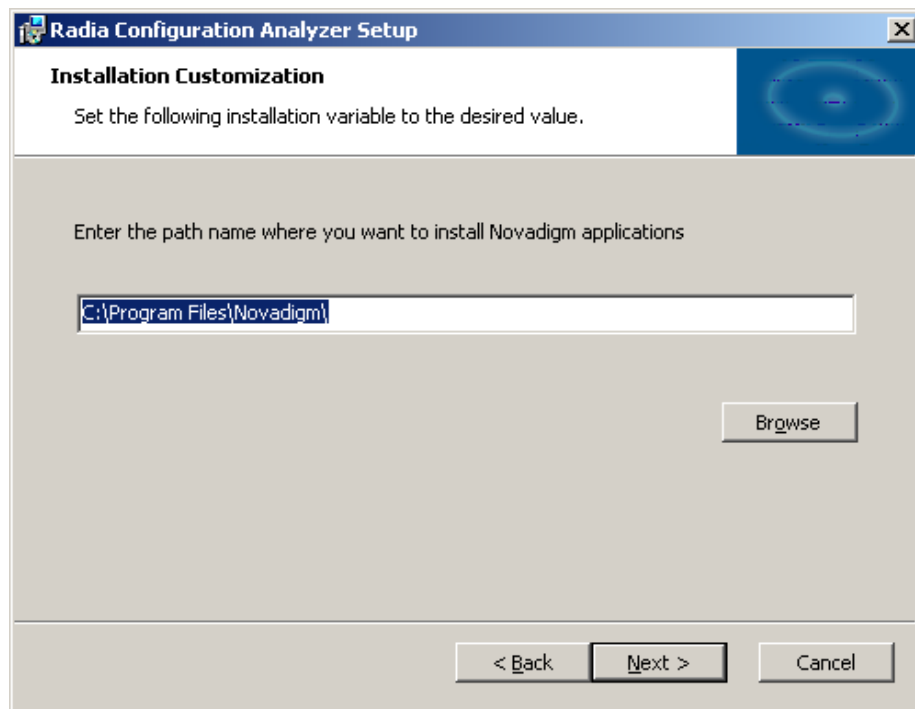
The Configuration Analyzer Welcome dialog box opens.

- 2 Click **Next**.

The HP End-User license agreement window opens.



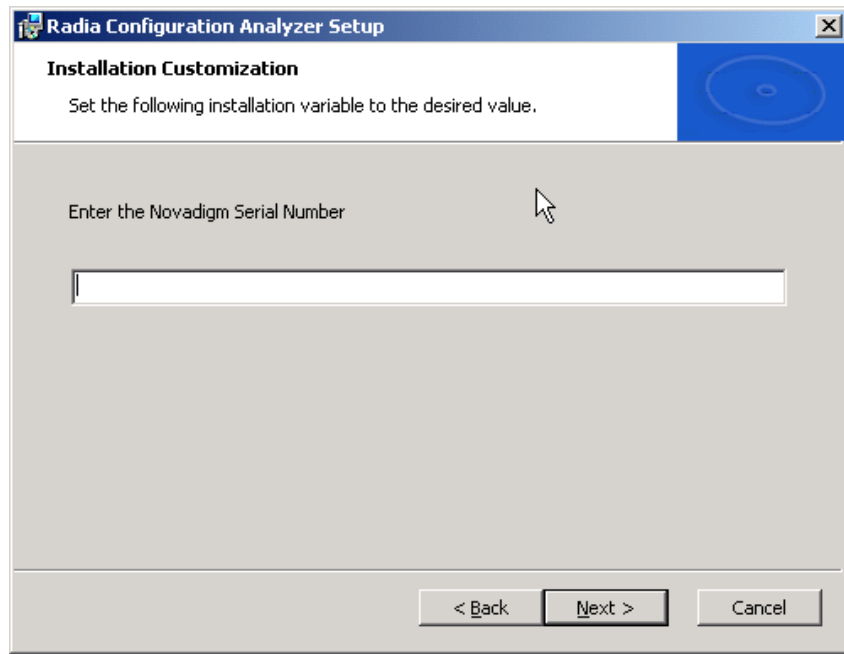
- 3 Read and accept the HP Software License Terms and click **Next**.
The Install Location dialog box opens.



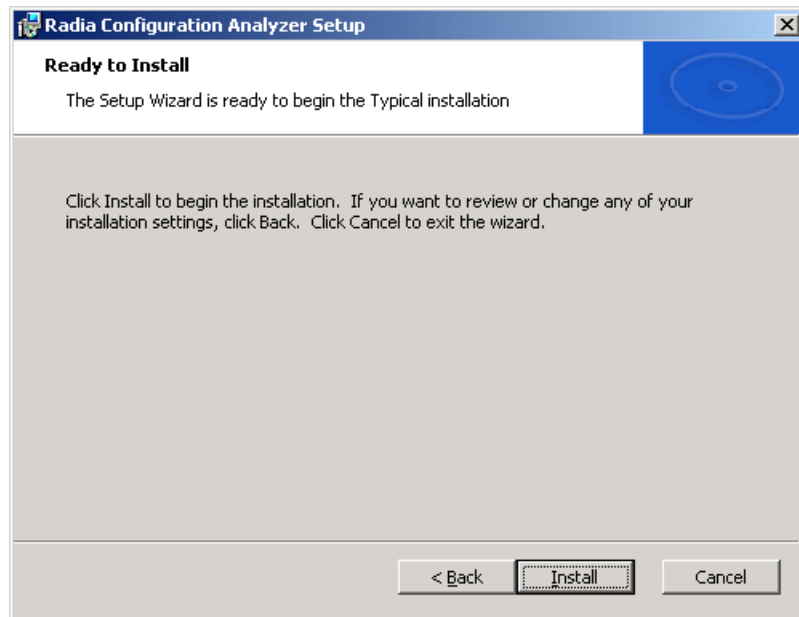
The Configuration Analyzer must be installed to the Novadigm directory. If this directory already exists, this step will be skipped.

- 4 Click **Next**.

The Serial Number dialog box opens.



- 5 Enter your serial number and click **Next**.
The Ready to Install dialog box opens.



- 6 Click **Install** to begin the installation.
- 7 When the installation is complete, click **Finish**.

The Configuration Analyzer has been successfully installed.

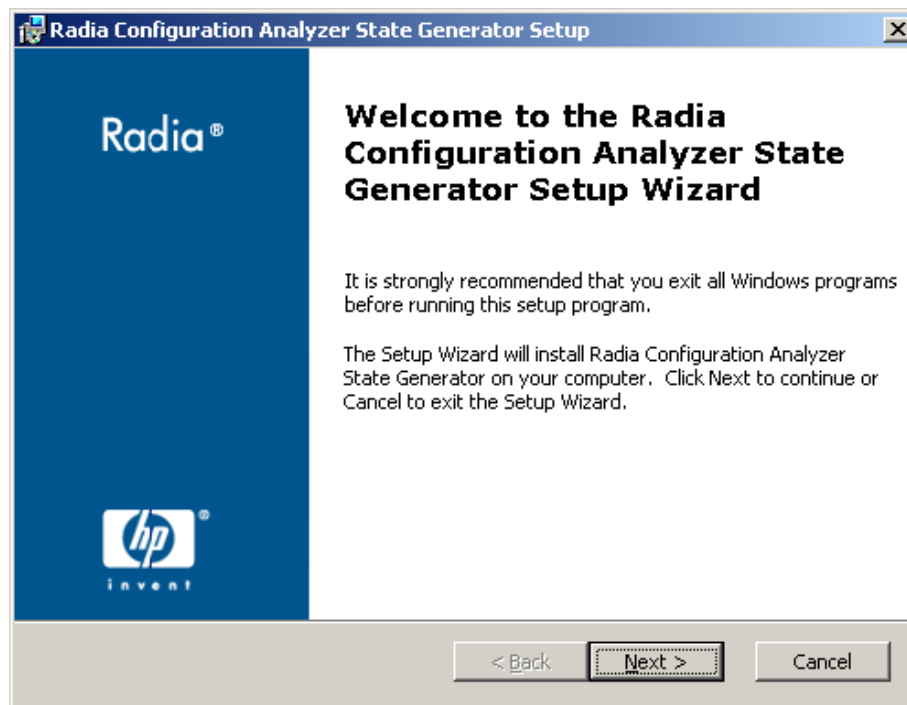
Task 4 Installing the Radia State Generator (optional)

The Radia State Generator allows you to create state files without the use of another state file-generating Radia Product. Install the Radia State Generator on the computer you will be using to generate state files. See Chapter 5, *Generating State Files* to find out how to use the Radia State Generator.

To install the Radia State Generator

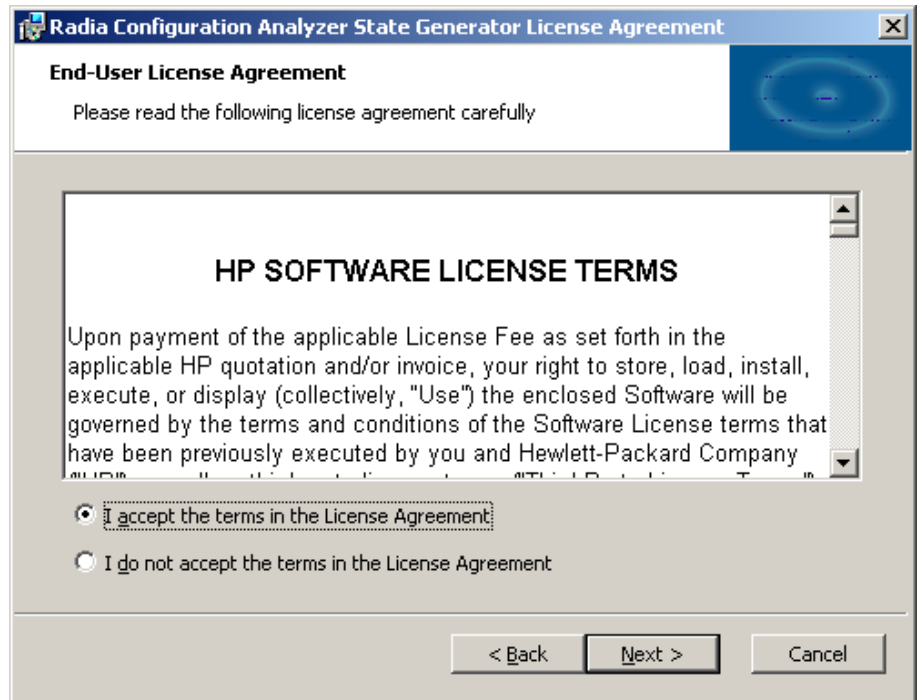
- 1 On your Configuration Analyzer media, navigate to the Configuration Analyzer State Generator folder.
- 2 Double-click **Package.msi**.

The Welcome dialog box opens.



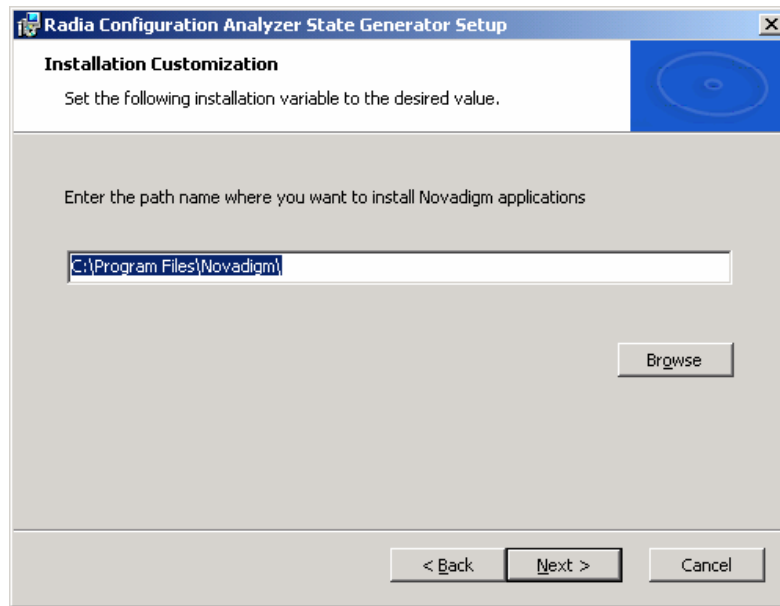
- 3 Click **Next**.

The End-User License Agreement window opens.



- 4 Read and accept the HP Software License Terms and click **Next**.

The Install Location dialog box opens.

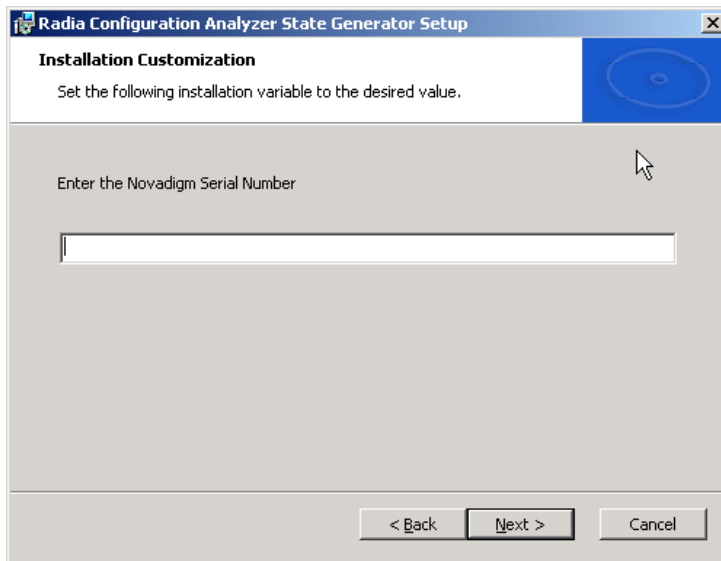


By default the Radia State Generator is installed to C:\Program Files\Novadigm.

If you want to install it to a different location, enter it here, or click **Browse** to navigate to it.

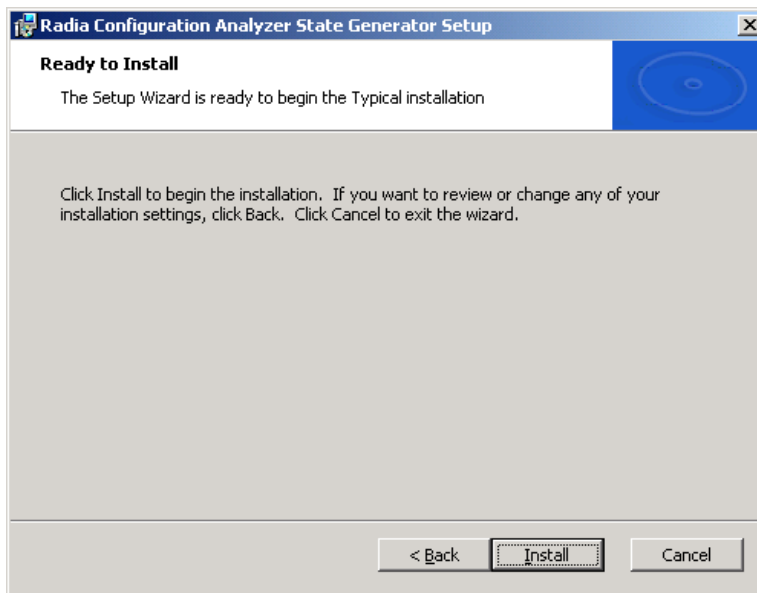
5 Click **Next**.

The Serial Number dialog box opens.



- 6 Enter your serial number, and click **Next**.

The Ready to Install dialog box opens.



- 7 Click **Install** to begin the installation.

- 8 When the installation is finished, click **Finish**.

The Configuration Analyzer State Generator is installed and ready to use. See Chapter 5, *Generating State Files* for information about how to use this tool.

Defining a Radia Application Knowledge Base

The Radia Application Knowledge Base is the database that contains your state file information. Define this database using either the Oracle or Microsoft SQL Server. The following instructions will help you define your Radia Application Knowledge Base database.

Microsoft SQL Server

New Radia Application Knowledge Base databases are created using the SQL data definition language files referenced below. All required SQL is predefined in these files.

Use the following steps to create the Radia Application Knowledge Base for a Microsoft SQL Server database.

First, create the Radia Application Knowledge Base.

To create the Radia Application Knowledge Base

- 1 Open the SQL Server Enterprise Manager.
- 2 Right-click the `Database` folder for the selected server and select **New Database**. Complete the entries as follows:
 - **General Tab**
 - **Name**
RadiaAKB (or a name of your choice excluding blanks and underscores)
 - **Data Files Tab**
 - **File Name**
RadiaAKB_Data (or name of your choice excluding spaces). Set the initial size to 100 MB.
 - Select **Automatically grow file** by 20%



For improved performance, it is recommended the Radia Application Knowledge Base be created on a drive other than the drive used to create state files.

— **Transaction Log Tab**

— **File Name**

RadiaAKB_Log (or a name of your choice excluding blanks). Set the log size to 250 MB.

- 3 Click **OK** to create the database and log files. The Radia Application Knowledge Base is now added to the `Databases` folder of your server, in the Server Manager.
- 4 When you are finished creating the database, create the database table schema.

To create the table schema for SQL Server

- 1 In the SQL Server Enterprise Manager, select the **Tools** menu, and then select **SQL Server Query Analyzer**.
- 2 Make sure the drop-down box displays the database you just created.
- 3 From within the Query Analyzer, open the directory where you installed the Configuration Analyzer and navigate to `\Program Files\Novadigm\Configuration Analyzer\Database\SQL Sever\`.
- 4 Execute each SQL script in the directory in order (the scripts are named accordingly) beginning with Step 2:
 - Step2_Define_ConfigurationAnalyzer_Tables.sql
 - Step3_Define_Common_Tables.sql
 - Step4_Define_StoredProcedures.sql
 - Step5_Define_Common_Functions.sql
 - Step6a_Insert_Common_DefaultData.sql
 - Step6b_Insert_ConfigurationAnalyzer_DefaultData.sql
- 5 Use Query Execute or press **F5** to run each script.

At the end of the query execution you will see a series of messages displaying sysdepends dependency and several row insertions. This indicates a successful installation of the database definitions.
- 6 Close the SQL Query Analyzer.

Oracle

Configuring your database schema for Oracle requires the execution of five SQL script files that are provided with your Usage Manager media in the `Oracle` directory. Copy these files to a location accessible by your Oracle administrator. Make sure to use the files located in the appropriate Oracle version directory.

To configure your Radia Application Knowledge Base database schema for Oracle

- 1 Define a system environment variable `Oracle_Home` on your administrator computer (Create `Oracle_Home=C:\Oracle\Oradata`). This allows the five .sql scripts you will run in the next few steps to locate your Oracle directory.
- 2 Use the Oracle DBA Studio application and login as **System / Manager**.
- 3 Execute the SQL scripts that were included with your Usage Manager media in order, making sure to include the correct path to the script locations.



Make sure to select the correct group of SQL files depending on the version of Oracle you are using.

— For Oracle 8i

- Step1_Define_TableSpaces.sql
- Step2_Define_RollbackSegments.sql
- Step3_Define_Common_Roles.sql
- Step4_Define_Common_Tables.sql
- Step5_Define_ConfigurationAnalyzer_Tables.sql
- Step6a_Insert_ConfigurationAnalyzer_DefaultData.sql
- Step6b_Insert_Common_DefaultData.sql

— For Oracle 9i

- Step1_Define_TableSpaces.sql
- Step2_Define_Roles.sql
- Step3_Define_Common_Tables.sql
- Step4_Define_ConfigurationAnalyzer_Tables.sql

- Step5a_Insert_ConfigurationAnalyzer_DefaultData.sql
- Step5b_Insert_Common_DefaultData.sql

For example, if your SQL scripts are located in the directory \RadiaUsageManager\Oracle\Schema, you would execute the first script by typing:

```
SQL> @C:\RadiaUsageManager\Oracle\Schema  
      \Step1_Define_TableSpaces.sql
```

followed by **Enter**.

- 4 Make sure each script executes properly.

The schema is successfully imported.



The .sql scripts preceded with Step99 and Step99a are used only for removing the Usage Manager Database. They are not required here.

Summary

- Install the Configuration Analyzer database schema and create an ODBC DSN connection to your database.
- Define the Radia Application Knowledge Base database using Microsoft SQL Server or Oracle.
- The Configuration Analyzer is installed to your Novadigm directory by default.
- Install the Configuration Analyzer State Generator to create state files without using another state generating product.

3 Configuration Analyzer Settings

At the end of this chapter, you will:

- Understand the different Configuration Analyzer settings.

The Configuration Analyzer simplifies your view of the complicated environment of application management. In combination with the Radia Application Knowledge Base, the Configuration Analyzer can:

- provide you with complete information about an application
- allow you to compare multiple applications to determine where conflicts exist
- and generate reports based on this information.

Workspaces and Projects within the Configuration Analyzer provide you with the means for organizing this information in a way that best suits your organization.

Configuration Analyzer Administrator Console

The Configuration Analyzer administrator console has two windows. The top window displays the available projects and workspaces containing imported state files, and the bottom window displays specific state files information and comparisons. Before you begin creating projects and workspaces, review the options and settings available in the administrator console.

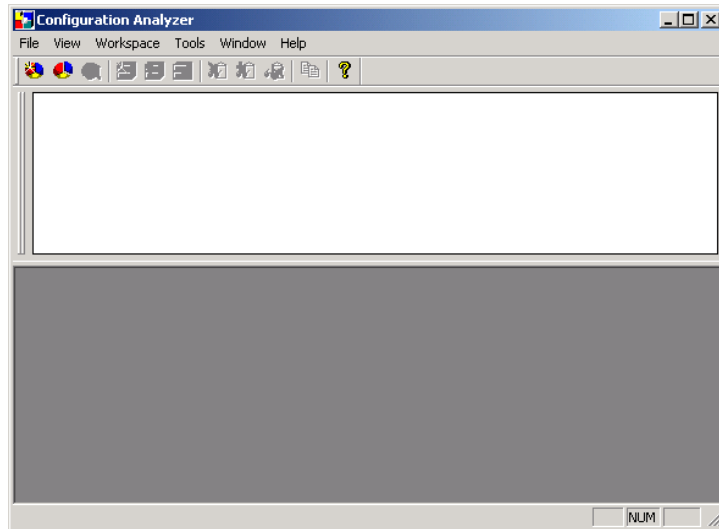


Figure 3: Configuration Analyzer Administrator Console.

Setting Options

To set Display and Comparison options, use the **Tools, Options** menu selection.

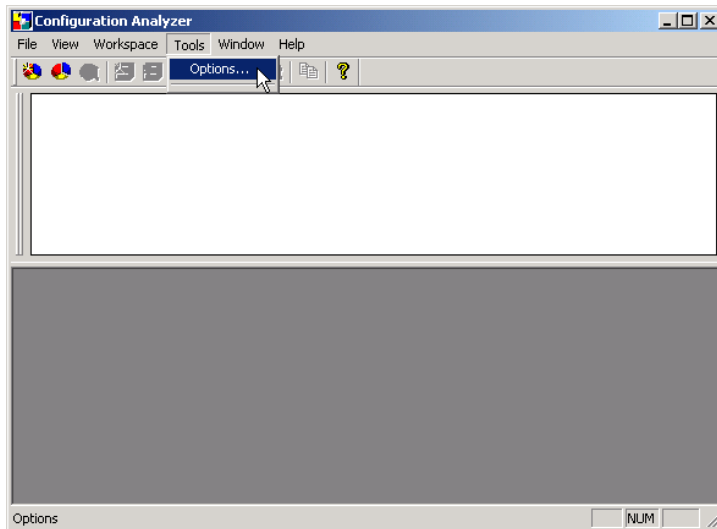


Figure 4: Configuration Analyzer Tools menu.

Display Tab Options

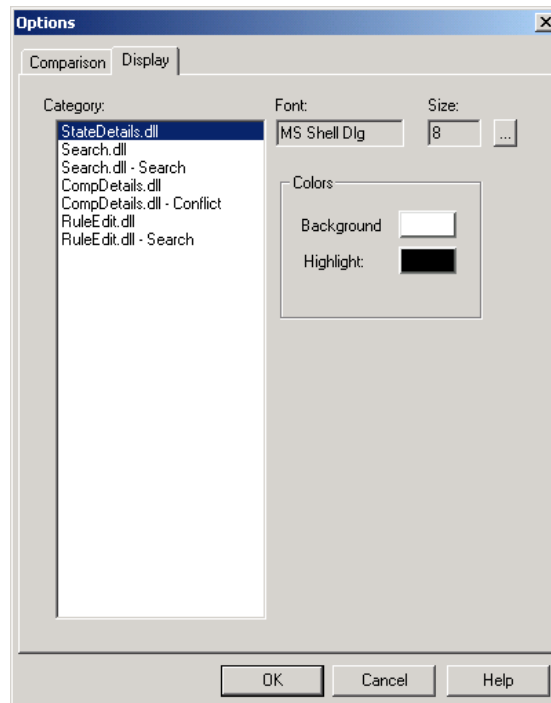


Figure 5: Configuration Analyzer Display tab.

- 1 Select the **Category** entry for which you want to set **Font** or **Color** options.
- 2 Double-click a color box to switch the **Background** or **Highlight** color for the selected category.
- 3 Click **OK** to save your format color selections.

The selected colors will be used to display the contents of the **Comparison Details** and **Comparison Detail - Conflicts** lists.

Comparison Tab Options

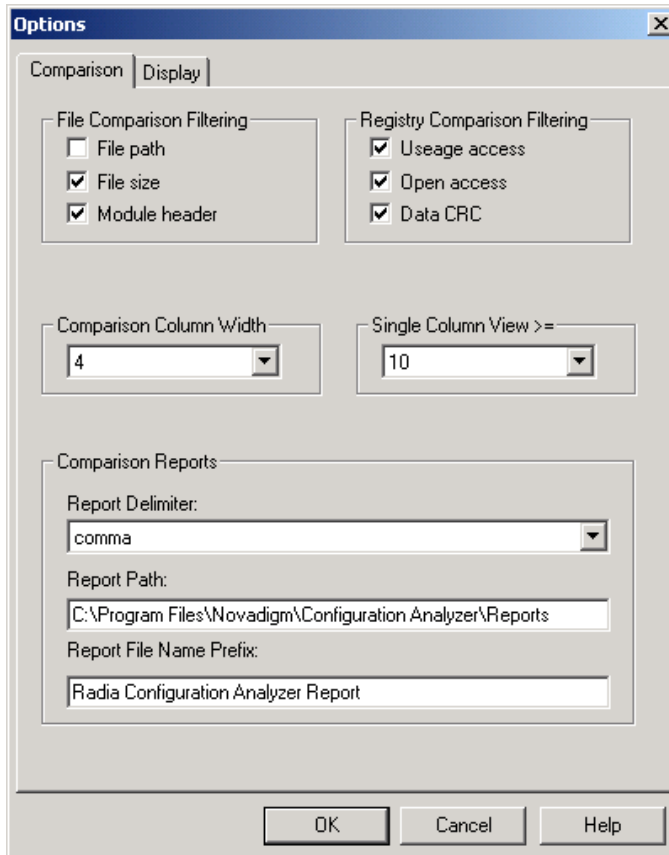


Figure 6: Configuration Analyzer Comparison tab.

File Comparison Filtering

- **File path**
Select whether the **Comparison** tab should include the file path in its comparison logic when determining whether files are identical. Selecting this box includes the file path in the comparison. If the only difference between two files is their respective paths, then they appear in the comparison summary as green check marks. However, double-clicking to display the comparison details will show them as being different.
- **File size**
Select whether the **Comparison** tab should include the file size in its

comparison logic when determining whether files are identical. Selecting this box includes the file size in the comparison.

- **Module header**

Select whether the **Comparison** tab should include the module header information in its comparison logic when determining whether files are identical. Selecting this check box includes the header information in the comparison. *This option is required for module comparisons.*

Registry Comparison Filtering

- **Usage access**

Select whether the **Comparison** tab should include the registry usage access requests in its comparison logic when determining whether keys are identical. Selecting this box includes the usage access in the comparison.



Usage access is only relevant for execution profiles and traces and should generally be turned off.

- **Open access**

Select whether the **Comparison** tab should include the registry open access requests in its comparison logic when determining whether keys are identical. Selecting this box includes the open access in the comparison.



Open access is only relevant for execution profiles and traces and should generally be turned off.

- **Data CRC**

Select whether the **Comparison** tab should include the registry data value in its comparison logic when determining whether keys are identical. Selecting this box includes the data value in the comparison.



Data values should always be turned on.

Column Data

- **Comparison Column Width**

Comparison report column width.

- **Single Column View**

Comparison Reports

- **Report Delimiter**
Select either comma or tab from the drop-down list to delimit the data within your report.
- **Report Path**
Type the default path to which Comparison Reports are saved.
- **Reports File Name Prefix**
Type the file name prefix to be pre-pended to the current date/time for the Comparison Report.

Managing Radia Application Knowledge Base Permissions

Use the Configuration Analyzer to manage permissions that grant access to the Radia Application Knowledge Base database. Radia Application Knowledge Base permissions enable the administrator to control which users have access to objects within the database and the extent of that access. Access rights are set based on a database Role and User ID.

All rights are granted based on a Workspace name for the combination of database Role and User ID. This allows the administrator to govern access to Workspace, Projects, and States.

Default Radia Application Knowledge Base Access Rights and Structures

To minimize database security administration, all users have full access to Configuration Analyzer functions unless otherwise restricted by the Radia Application Knowledge Base administrator. To do this he selects the **Enable Security** check box in the File\Permissions dialog box.

If security is enabled, the following access rights occur for SQL Server Radia Application Knowledge Base implementations at installation.

- By default, the User ID that creates a Workspace has complete control of the Workspace and may add, update, or delete any object related to the new Workspace.
- The special designation, **<all>**, may be set as the Role, User ID, or Workspace name when setting access rights. The **<all>** Role, User ID, or Workspace access right supercedes an access right set for a specific Role, User ID, or Workspace.
- In an Oracle server environment, only users having the Role of DBA or the User ID of **RADIA** may modify Configuration Analyzer Permissions.

- In a SQL Server environment, only users having the Role of DB_OWNER or the User ID of sa may modify Configuration Analyzer Permissions.

Creating Radia Application Knowledge Base User IDs

Users that are not Radia Application Knowledge Base administrators can be assigned to a single database role using the database server's methodology of adding a new user and assigning a role. These users require no special permissions to database objects.



All database users must have only one role assigned to them. For example, the user can have the DB_OWNER or KB_Integrator role, but not both.

Choosing the Role, User ID, Workspace, and Workspace Owner

Specific rights are assigned to users through the Permissions dialog box, which is accessed through the Configuration Analyzer **File** menu.

In the Permissions dialog box, you must choose a Role, User ID, Workspace, and Workspace Owner to grant rights to. Once a Role has been chosen, all users that have that Role assigned are now available in the Users list, as is a list of all Workspaces in the Radia Application Knowledge Base. Once a Workspace has been chosen, the owner of the Workspace is shown and may be modified.

Enabling All Roles, Users, Workspaces, and Workspace Owner Access

To simplify security administration, you may set the Role, User, Workspace, and Workspace owner name to <all>. The <all> setting allows the administrator to set access rights to all Roles, all Users, all Workspaces, and all Owners for specific access rights. The <all> setting supercedes specific settings.

To set View Objects access rights to everyone

To set View Objects access rights to everyone, access the Permissions dialog box from the Configuration Analyzer **File** menu, and do the following:

- 1 Set the Role to <all>.
- 2 Set the User ID to <all>.
- 3 Set the Workspace to <all>.

- 4 By default, the Owner of the <all> Workspace is shown. Set the Owner to <none> to indicate that no user owns all of the Workspaces.
- 5 Select the View Objects access right and save its settings.

Enabling Workspace Creation for a User

Any user who is authorized to create a Workspace must be granted Workspace Create authority. This user who creates the Workspace is the Workspace Owner. The <new> pseudo Workspace entry governs whether the selected user may create a new Workspace in the Radia Application Knowledge Base. To enable Workspace creation for the user, select the **WORKSPACE CREATE** entry for the <new> Workspace and save the setting.

Otherwise, to disable Workspace creation capability, remove the selection for the entry and save the changes.

Access Rights of the Workspace Owner

The Workspace Owner has complete control over the contents of a Workspace and the Workspace itself. By default, the Workspace Owner is the user who created the Workspace. Workspace ownership access rights may be reassigned by the database administrator to a different user, no user, or all users.

Assigning Specific Access Rights to Users

To assign access rights, select and highlight the appropriate rights by clicking on them. If any changes are made, they are saved by clicking **Save** and confirming the save operation. To cancel your selections close the dialog box and click **No** when the save confirmation dialog box is presented.

When viewing Workspace access rights for a user, the rights that have been granted are selected.

The following access rights may be set by the administrator:

- **WORKSPACE CREATE**
Grants authority to create a Workspace.
- **WORKSPACE RENAME**
Grants authority to rename a Workspace.
- **WORKSPACE DELETE**
Grants authority to delete a Workspace.

- **ADD OBJECTS**
Grants authority to Import state files and to add existing Projects and state files to a Workspace.
- **RENAME OBJECTS**
Grants authority to rename Projects and state files in a Workspace.
- **DELETE OBJECTS**
Grants authority to delete Projects and state files from a Workspace.
- **VIEW OBJECTS**
Grants authority to view State details and to generate comparisons of Workspace objects.

Access Rights for Shared Objects

If an object, such as a state file, is shared between two or more Workspaces, the user requires access rights to all Workspaces containing the object. Otherwise, the user is not authorized to perform the requested operation.

Sample Implementation Guidelines

If groups of users with diverse needs are going to access the Radia Application Knowledge Base, you should create a unique database role for each group of users and manage their database rights using these roles.

Any roles should follow a naming standard, such as: *AKB_rolename*. For example, the following roles may be appropriate for your organization:

- **DB_OWNER/AKB_ADMIN**
Requires full access to all Workspaces and their objects.
- **AKB_Integrator**
Requires all access to a personalized Workspace used in validating installation packages and View Objects access to production "Gold" level Workspaces maintained by the Quality Assurance Team.
- **AKB_HelpDesk**
Requires View Objects access to production "Gold" application package information to view State Details and perform comparison reporting against traces or machine scans gathered from end users. Requires all access to a personalized or Help Desk level Workspace used in diagnosing end-user application problems.
- **AKB_QualityAssurance**
Requires all access to production "Gold" Workspace and View Objects access to all other Workspaces.

- **AKB_Developer**
Requires View Objects access to production "Gold" application package information to view State Details and perform comparison reporting against their internally developed applications before they are passed to the Integration Lab or Quality Assurance. Requires all access to a personalized or Developer level Workspace used for application analysis.

Summary

- Use the available menu items to customize the Configuration Analyzer.

4 Using the Configuration Analyzer

At the end of this chapter, you will:

- Be able to populate the Radia Configuration Knowledge Base.
- Be able to view state information.

Populating the Radia Application Knowledge Base

The Workspace is the main organizational structure in the Configuration Analyzer that provides a user's view into the Radia Application Knowledge Base.

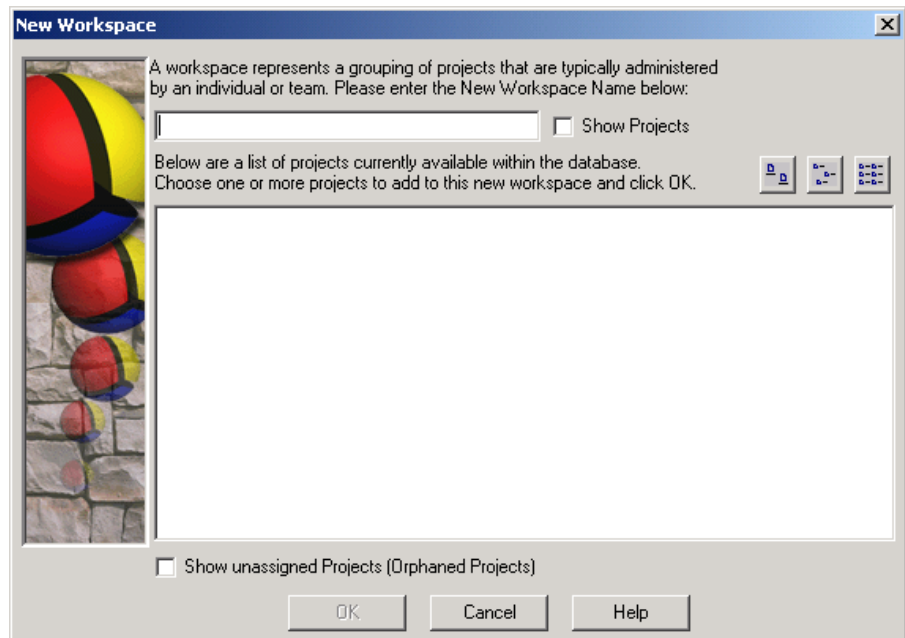
Creating a Workspace

The first step in populating the organizational Knowledge Base with your application information is to create a workspace.

To create a workspace

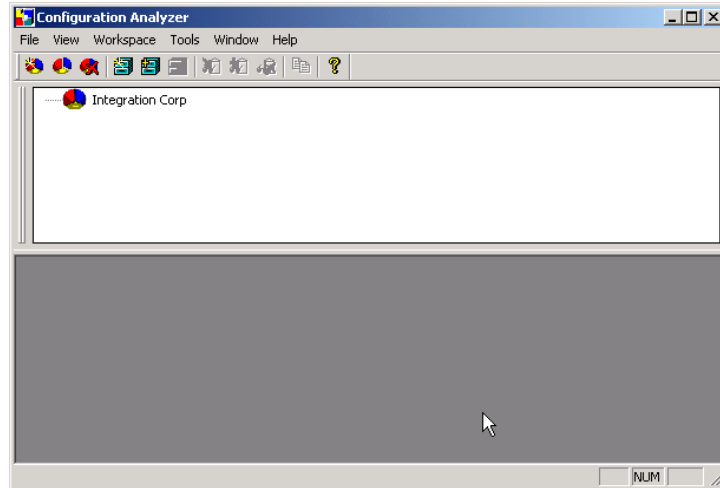
- 1 Click .

The New Workspace dialog box opens.



- 2 Type a name for your workspace, such as **Integration Corp.** If you created projects prior to this point, you can add any available projects to this workspace when it is created.
- 3 Click **OK**.

A new workspace appears in the Configuration Analyzer.

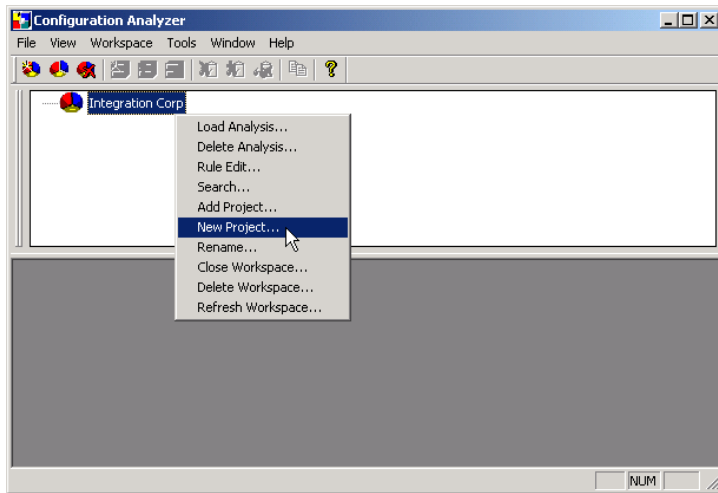


Creating a Project

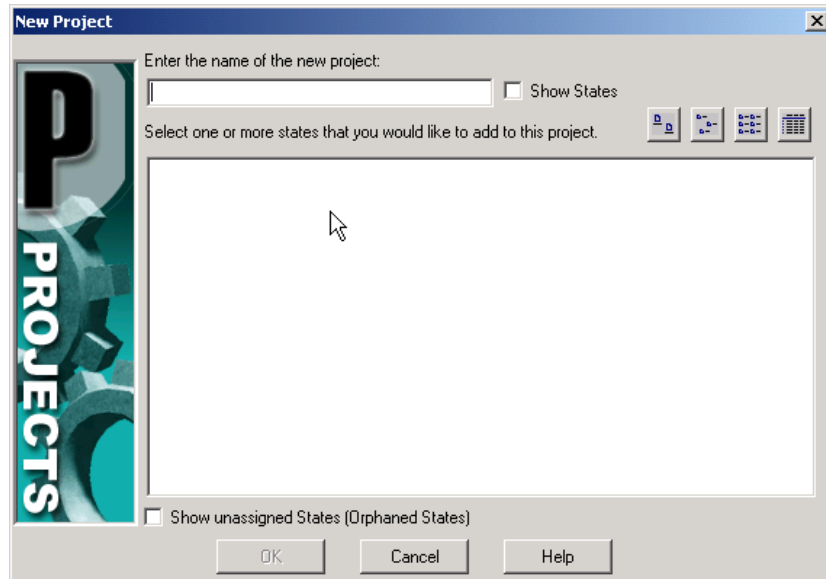
Before you can import states into your workspace, you need to create a project to contain your states. A project is a group of individual applications or machine states.

To create a project

- 1 In the Configuration Analyzer, right-click a workspace, such as **Integration Corp**.

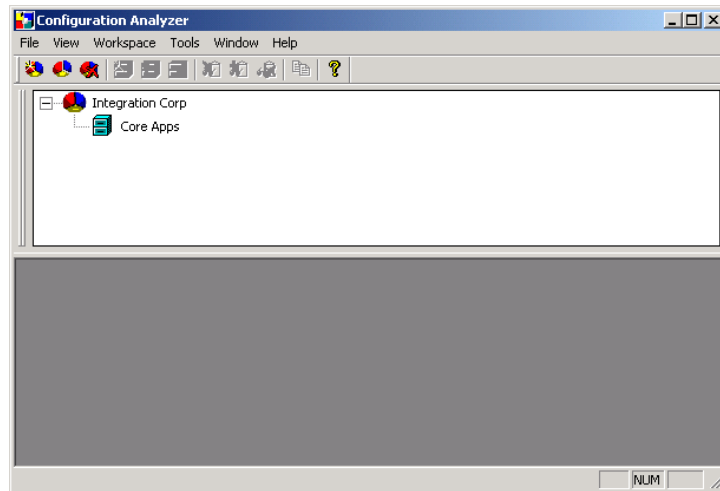


- 2 Right-click your workspace and select **New Project**.
The New Project dialog box opens.



- 3 In the **Enter the name of the new project** text box, type a project name such as **Core Apps**.

- 4 If any states have been imported, select the states that you would like to include in this project.
- 5 Click **OK**.
- 6 Expand the branch of your workspace to see the new project.



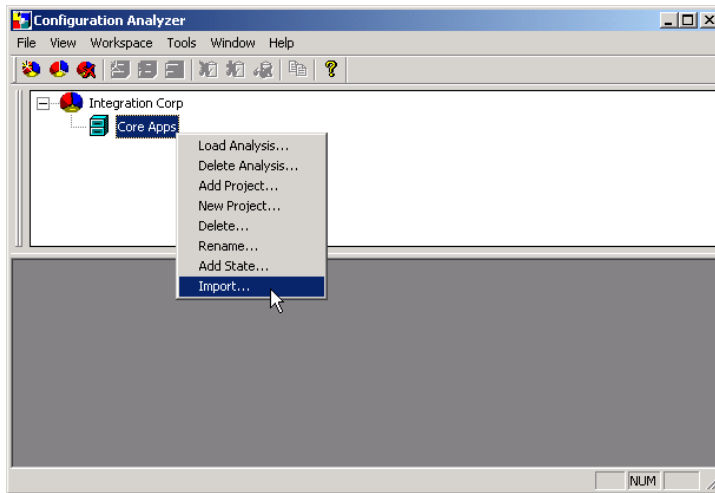
Importing a State

Now you can import your state files into your Radia Application Knowledge Base.

- ▶ Importing state files uses bulk loading. For Oracle databases, the administrator's computer must have the SQL loader installed.

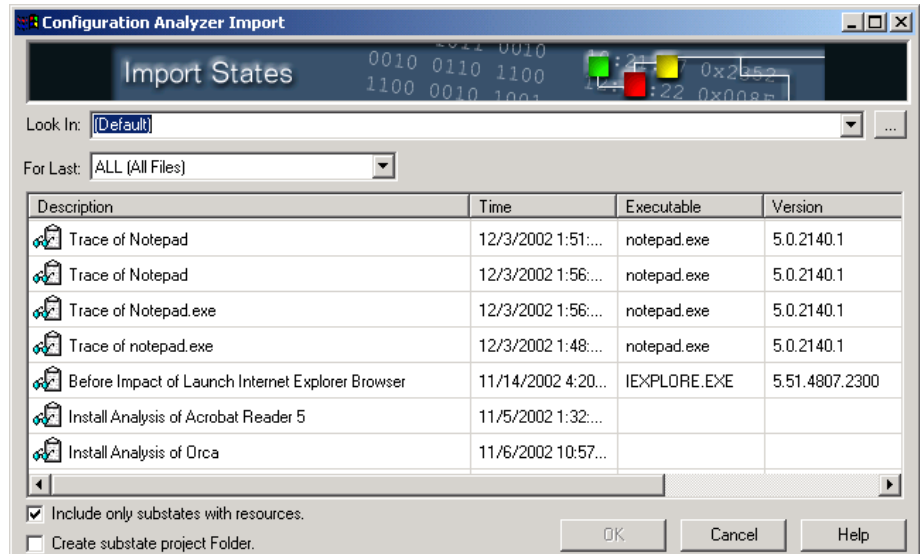
To import a state

- 1 In the Configuration Analyzer, right-click a project, such as **Core Apps**.



2 Select **Import** from the shortcut menu.

The Import window opens.

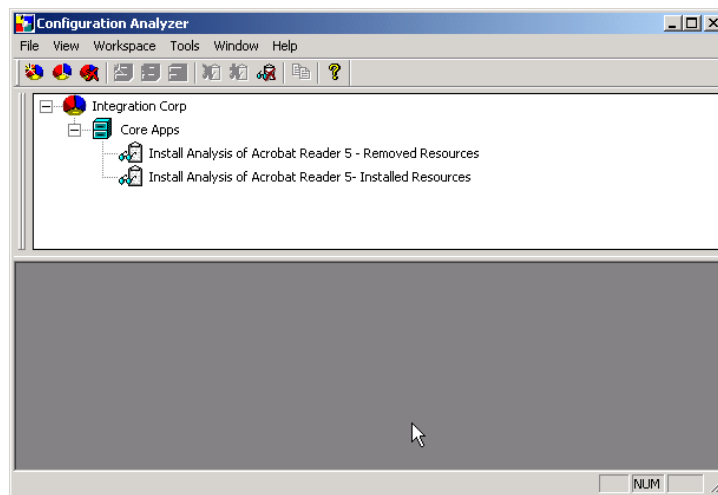


3 Select the states you would like to import into the Radia Application Knowledge Base.

► In order for state files to sort properly in the import window, regional settings must be in the format MM/DD/YYYY.

- 4 Each state file may contain multiple substates, for example: Before State, After State, and a Delta State. Select the substate option by selecting either check box in the bottom left corner of the Import dialog box.
 - Include only substates with resources
 - Create substate project folder
creates a separate project folder for each substate.
- 5 Click **OK**.

Your states are imported into the project in the Radia Application Knowledge Base. Expand the project to see the states.



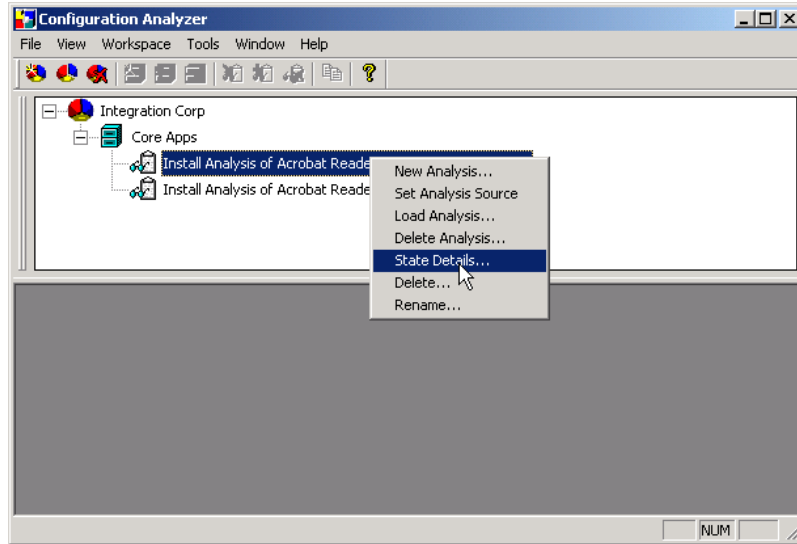
Notice that Install States are imported into Projects with two individual state files, **Removed Resources** and **Installed Resources**. The Removed Resources State contains information about resources that existed on the machine before the application was installed, but were changed or removed. The Installed Resources State details the resources that were added to the machine during installation and the resources that were changed during the installation.

Viewing State Information

Now that you have this information in the Radia Application Knowledge Base, what can you do with it? One of the many tasks you can perform with the Configuration Analyzer is simply viewing all of the information contained in a state. This detailed information is now available to any licensed user with whom you share the Radia Application Knowledge Base.

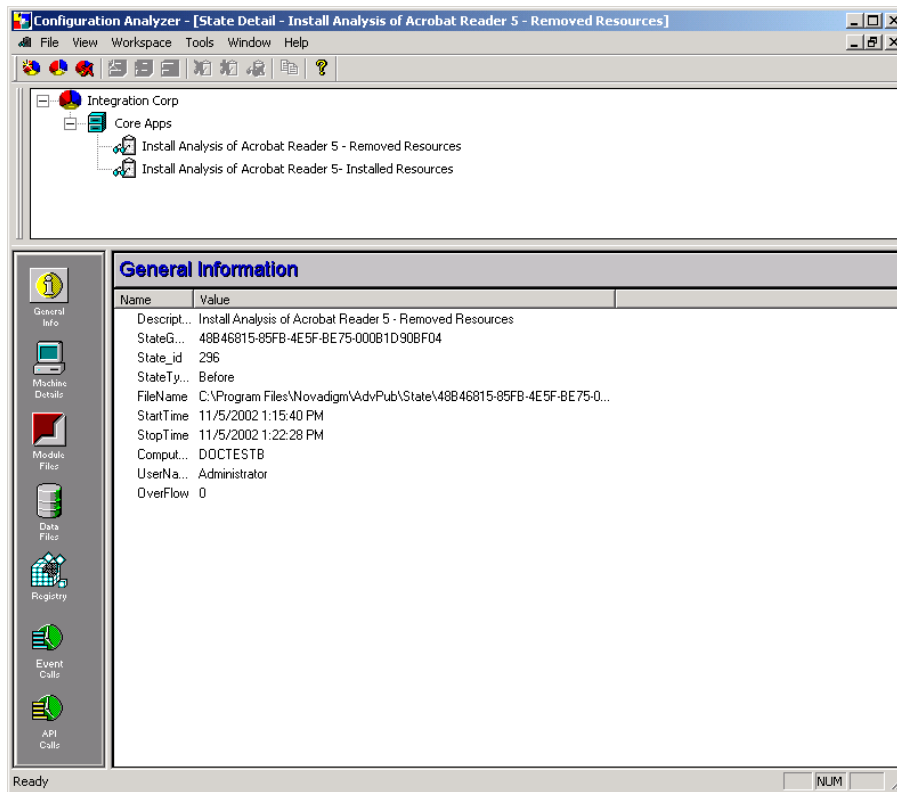
To view the information in a state

- 1 In the Configuration Analyzer, right-click the install state that you want to view.



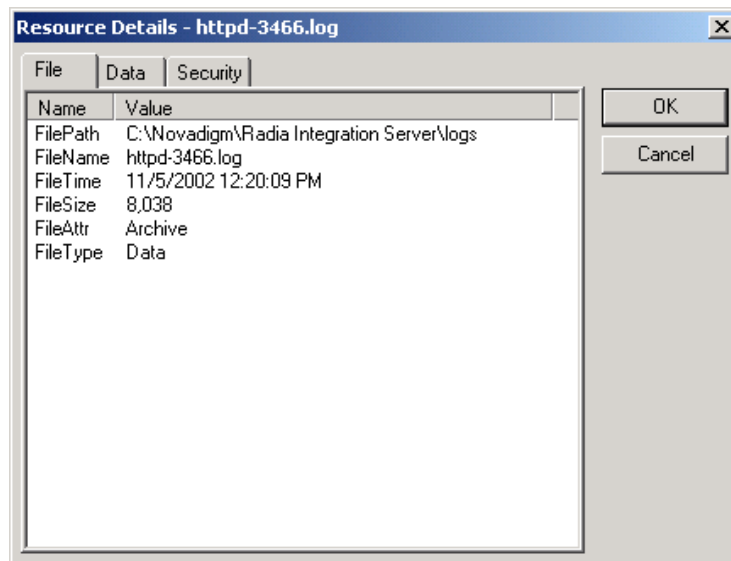
- 2 Select **State Details**.

The State Detail window opens.



All of the information in the state is categorized. You can view:

- **General Info** about the state.
 - **Machine Details** for the computer on which the state file was created.
 - Specific information on **Module Files**.
 - Specific information on **Data Files**.
 - Specific information on Registry Settings.
 - **Event Calls** and **API Calls** are sections reserved for analyzing AppInsight Trace States.
- 3 Click **Module Files**, **Data Files**, or **Registry** (in the menu on the left side of the figure above). Then, double-click a file to display specific resource details.



- 4 Click **OK** when you are finished viewing the information.

Analyzing State Files

When you are integrating an application, it is important to be able to find conflicts between applications. The Configuration Analyzer provides the tools to quickly and easily analyze applications for conflicts.

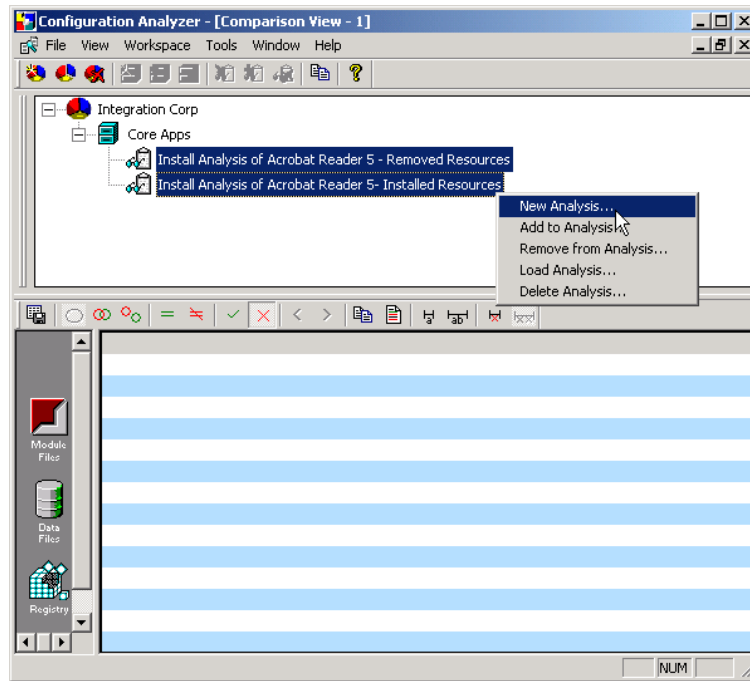
To compare state files

- 1 In the Configuration Analyzer, select the states that you want to compare. To do this, hold the **Ctrl** key on your keyboard and click each of the states that you want to include in the analysis.



You can add more states to the analysis later.

Optionally, you can right-click a Project or Workspace and select **New Analysis** from the shortcut menu to compare all states found below.



- 2 Right-click one of the states and select **New Analysis**.

The Analysis View screen opens.

| ModuleFile | Install Analysis of Adobe ... | Install Analysis of Adobe A... |
|----------------|-------------------------------|--------------------------------|
| ACELITE.DLL | | X |
| AGM.DLL | | X |
| BIB.DLL | | X |
| BRWSRPI.DLL | | X |
| COOLTYPE.DLL | | X |
| ICCTEST.DLL | | X |
| NPPDF32.DLL | | X |
| PERMISSION.DLL | | X |
| SHFOLDER.EXE | | X |
| | | |
| | | |

A complete comparison of the resources opens, categorized by the type of resource.

- ✓ identifies resources with no conflicts.

✗ signifies a difference between the files that could cause problems.

- 3 Double-click a resource with a ✗ to see the details of the conflict.

The Resource Conflict/Detail window opens and the differences are highlighted in red.

| Properties | After Install Analysis of Acrobat Reader 3.01 | After Install Analysis of Acrobat Reader 4.0 |
|-------------|---|--|
| FilePath | C:\Acrobat3\Reader | C:\Program Files\Adobe\Acrobat 4.0\Re... |
| FileName | AcroRd32.exe | AcroRd32.exe |
| FileTime | 6/16/1997 1:59:14 PM | 3/18/1999 5:01:24 PM |
| FileSize | 2,318,848 | 2,316,288 |
| FileVersion | 3.0.0.0 | 4.0.0.0 |
| FileAttr | Archive | Archive |
| FileType | Module | Module |
| ModName | AcroRd32.exe | AcroRd32.exe |
| ModCRC | 0x0D68F004 | 0xBDC33F52 |
| ModType | Exe, 32Bit | Exe, 32Bit, COM Server |
| VerKey | 0x33A5A91F | 0x36F1A1DE |
| ImageBase | 0x00400000 | 0x00400000 |
| ImageSize | 2,363,392 | 2,355,200 |
| FileFlags | None | None |
| FileOS | Windows32 | Windows32 |
| FileModType | App | App |
| FileSubType | Unknown | Unknown |



If you want to find out what other states in the Radia Application Knowledge Base use a particular resource, right-click on the resource and select **Who Uses?** A list of all the other states that use that resource opens.

- 4 Click the close button to close the Resource Conflict/Detail window.

Adding and Removing States from the Analysis

To add a state to the analysis

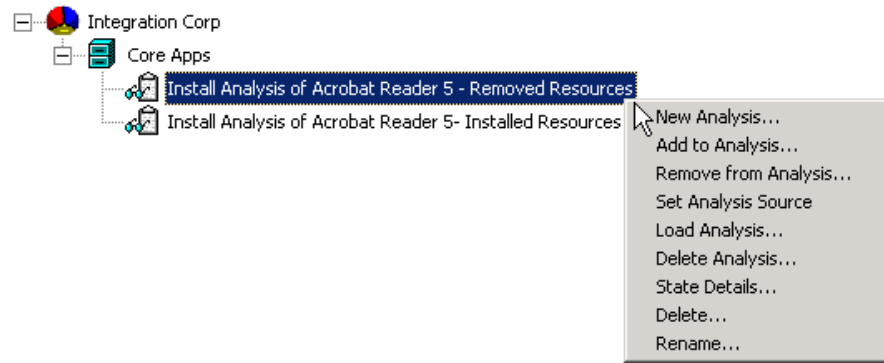
- Right-click the state file you would like to add to the comparison and select **Add to Analysis** from the shortcut menu.

The state file is added to the analysis.

To remove a state from the analysis

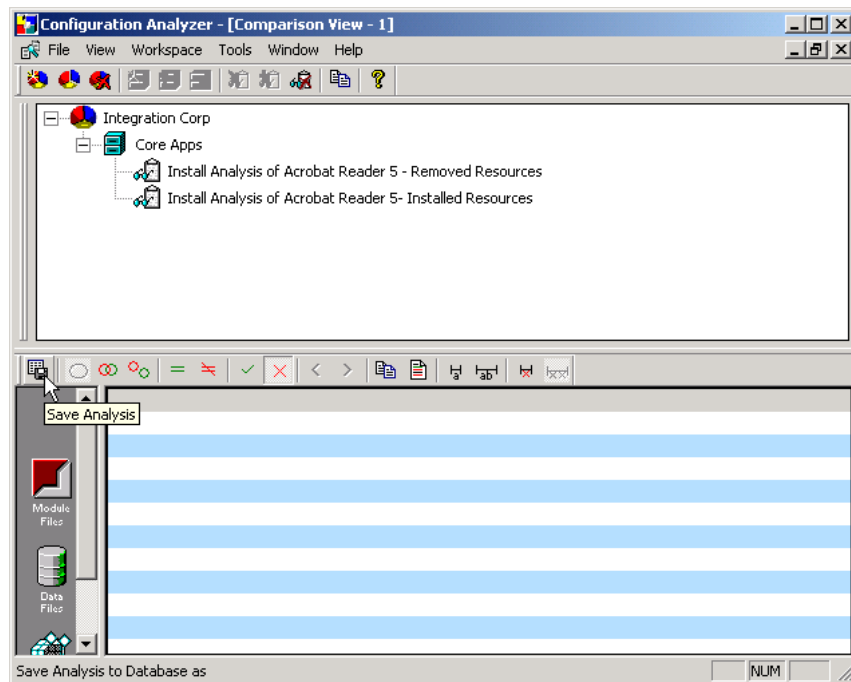
- Right-click the state file you would like to add to the comparison and select **Remove from Analysis** from the shortcut menu.

The state file is removed from the analysis.

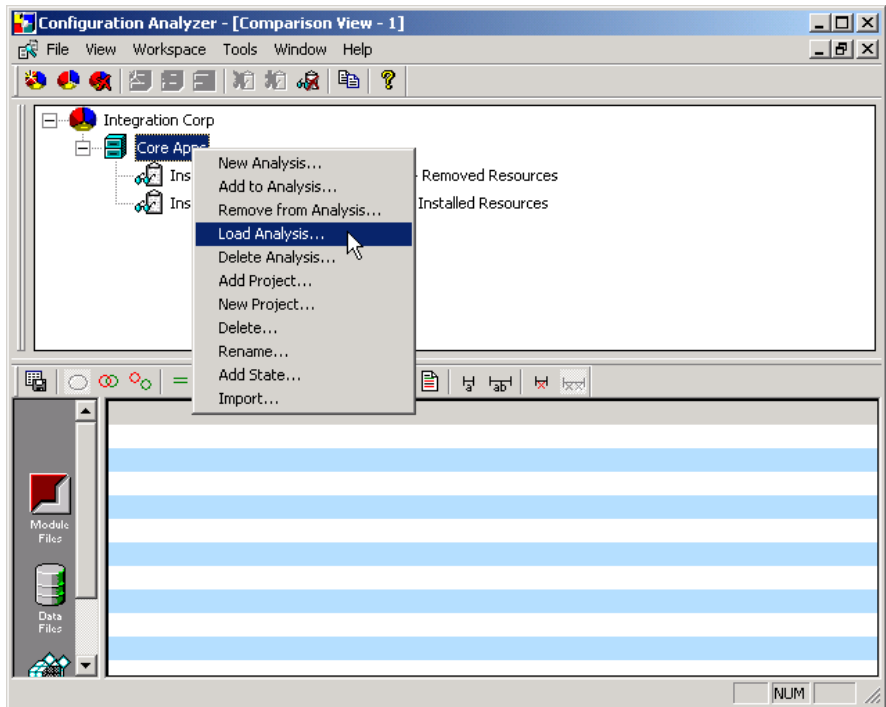


Saving and Loading an Analysis

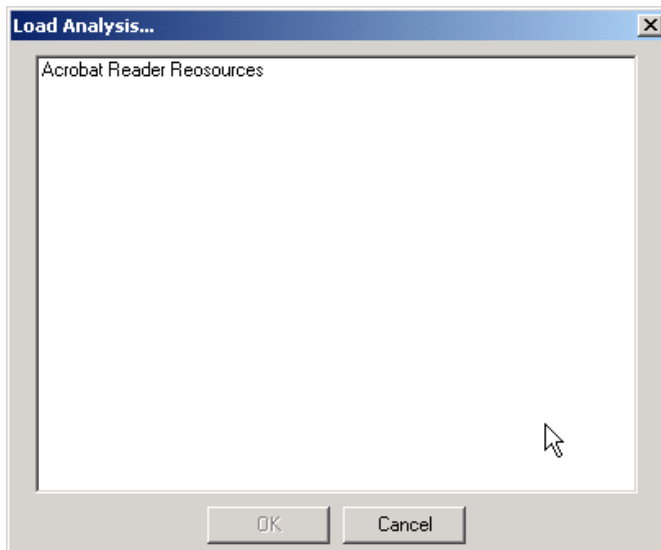
- Save an analysis for future viewing using the **Save Analysis** button.



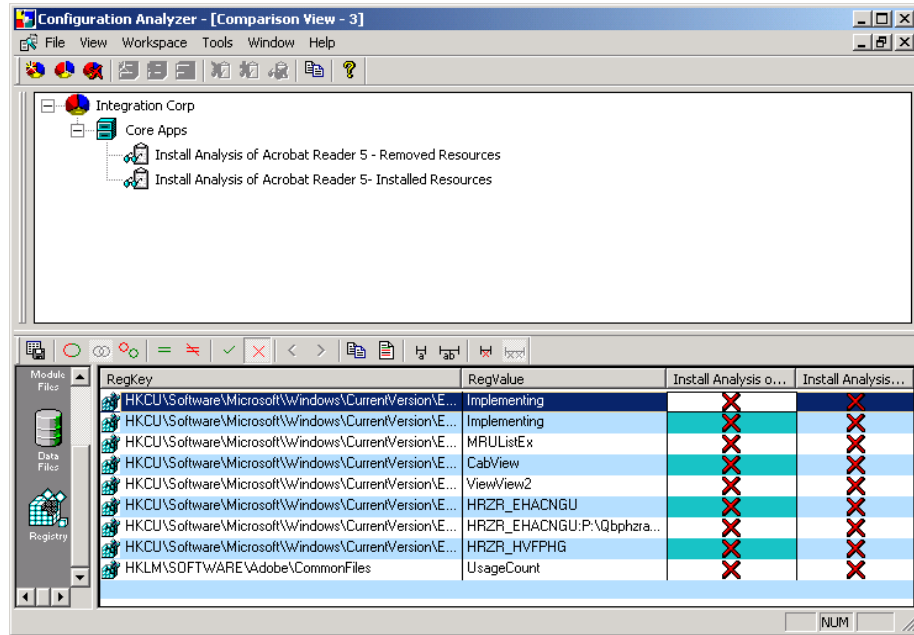
- Load any saved analysis by right-clicking any of the states or project names in the tree-view window.



- Select the analysis you would like to load from the **Load Analysis** list box and click **OK**.




- The analysis is loaded and displayed at the bottom of the analysis window.



Generating a Report

You may want to generate a report of all the resources in an application or the conflicts between applications.

To generate a report

- To generate a report, click **Generate report** .

COMPARISON DETAIL REPORT

| Summary | | | | | | |
|---|---|----------|------------|-----------|----------------------|----------------------------|
| Report Type: All Resources - Conflicts Only | | | | | | |
| Resource Type: Module File | | | | | | |
| Comparison States: 1: Install Analysis of Adobe Acrobat - Removed Resources 2: Install Analysis of Adobe Acrobat- Installed Resources | | | | | | |
| ACELITE.DLL ❌ | | | | | | |
| State | Path | Version | CRC | Size | Time | Attributes |
| Install Analysis of Adobe Acrobat-Installed Resources | C:\WINNT\system32\Adobe\SVG Viewer | 1.2.0.1 | 0x3FFD2741 | 397,312 | 4/16/2001 4:39:02 PM | Archive |
| Install Analysis of Adobe Acrobat-Installed Resources | C:\Program Files\Adobe\Acrobat 5.0\Reader | 1.2.0.1 | 0x3FFD2741 | 397,312 | 4/16/2001 4:39:02 PM | Archive, NotContentIndexed |
| AGM.DLL ❌ | | | | | | |
| State | Path | Version | CRC | Size | Time | Attributes |
| Install Analysis of Adobe Acrobat-Installed Resources | C:\WINNT\system32\Adobe\SVG Viewer | 4.4.26.1 | 0xBC92A652 | 1,138,688 | 9/5/2001 2:10:34 PM | Archive |
| Install Analysis of Adobe Acrobat-Installed Resources | C:\Program Files\Adobe\Acrobat 5.0\Reader | 4.4.26.1 | 0xBC92A652 | 1,138,688 | 9/5/2001 2:10:34 PM | Archive, NotContentIndexed |
| BIB.DLL ❌ | | | | | | |
| State | Path | Version | CRC | Size | Time | Attributes |
| Install Analysis of Adobe Acrobat-Installed Resources | C:\Program Files\Adobe\Acrobat 5.0\Reader | 1.0.20.1 | 0x5D825C65 | 147,456 | 4/16/2001 4:39:02 PM | Archive, NotContentIndexed |
| Install Analysis of Adobe Acrobat-Installed Resources | C:\WINNT\system32\Adobe\SVG Viewer | 1.0.20.1 | 0x5D825C65 | 147,456 | 4/16/2001 4:39:02 PM | Archive |
| BRWSRPI.DLL ❌ | | | | | | |
| State | Path | Version | CRC | Size | Time | Attributes |
| Install Analysis of Adobe Acrobat-Installed Resources | C:\Documents and Settings\Administrator\Local Settings\Temp_JSTMP3.DIR_JSTMP0.DIR | 5.0.5.0 | 0xC3F1E920 | 53,248 | 8/8/2001 9:22:42 PM | NotContentIndexed |
| Install Analysis of Adobe Acrobat-Installed Resources | C:\Documents and Settings\Administrator\Local Settings\Temp_JSTMP2.DIR_JSTMP0.DIR | 5.0.5.0 | 0xC3F1E920 | 53,248 | 8/8/2001 9:22:42 PM | NotContentIndexed |
| Install Analysis of Adobe Acrobat-Installed Resources | C:\Documents and Settings\Administrator\Local Settings\Temp_JSTMP1.DIR_JSTMP0.DIR | 5.0.5.0 | 0xC3F1E920 | 53,248 | 8/8/2001 9:22:42 PM | NotContentIndexed |

Your report is created and saved in the Program Files\Novadigm\Application Analyzer\Reports directory.

Summary

- Use the Configuration Analyzer to view and compare state files.
- Right-click the workspace, projects, or state files to reveal the available options.
- Generate and save Comparison Detail reports with the Configuration Analyzer.
- Use the System Explorer to export existing services as state files into the Radia Application Knowledge Base.

5 Generating State Files

At the end of this chapter, you will:

- Create state files using the Radia State Generator.
- Understand the process behind creating state files with the System Explorer.

Generating State Files with the Radia State Generator

Use the Radia State Generator to create state files of applications you may want to analyze. This is useful when you would like to analyze any changes that may take place during an installation or after any other modifications have been made to an application.

State files represent the current state of an application. Therefore, there are different types of state files.

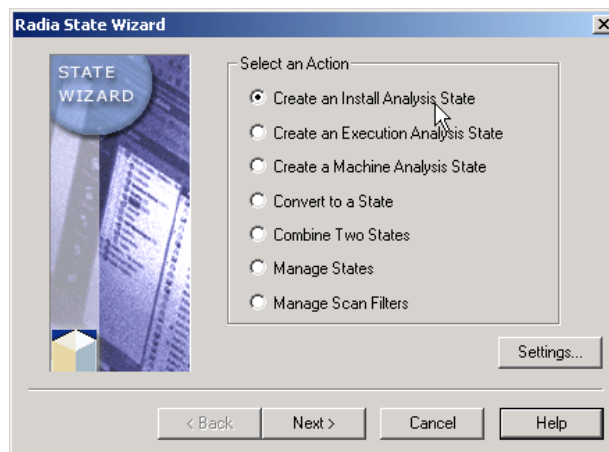
- A **Before State File** represents the state of a machine before the application has been installed.
- An **After State File** represents the installed state of an application.
- A **Delta State File** represents any changed state of an application.

Creating a Before State File

Use the Radia State Generator to create a state file of the machine before installing the application. This state file represents a comprehensive knowledge base of the resources that an application uses on a workstation.

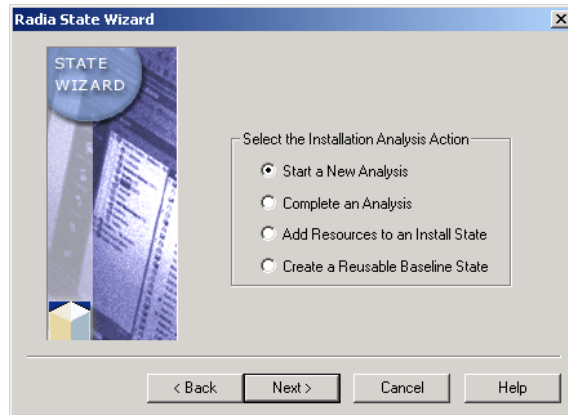
To create a before installation state file

- 1 Double-click the Radia State Generator icon.



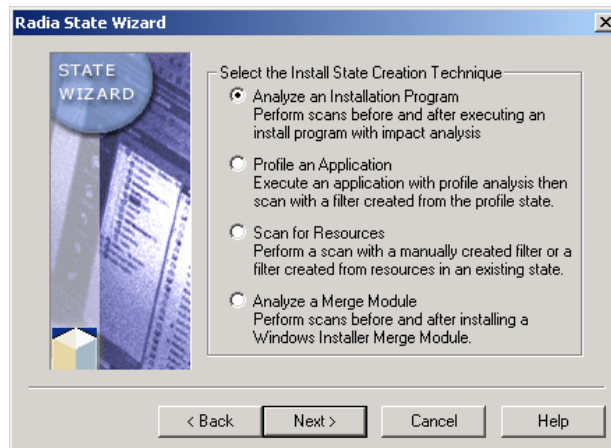
- 2 Select **Create an Install Analysis State**.
- 3 Click **Next**.

The Select the Installation Analysis Action dialog box opens.



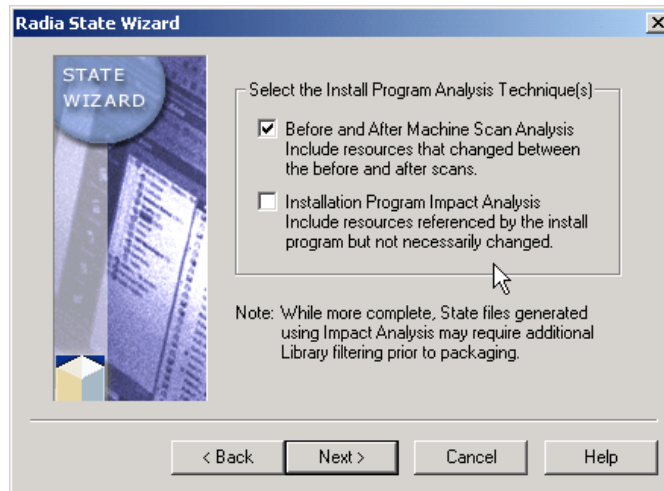
- 4 Select **Start a New Analysis**.
- 5 Click **Next**.

The Select the Install State Creation Technique dialog box opens.



- 6 Select **Analyze an Installation Program**.
- 7 Click **Next**.

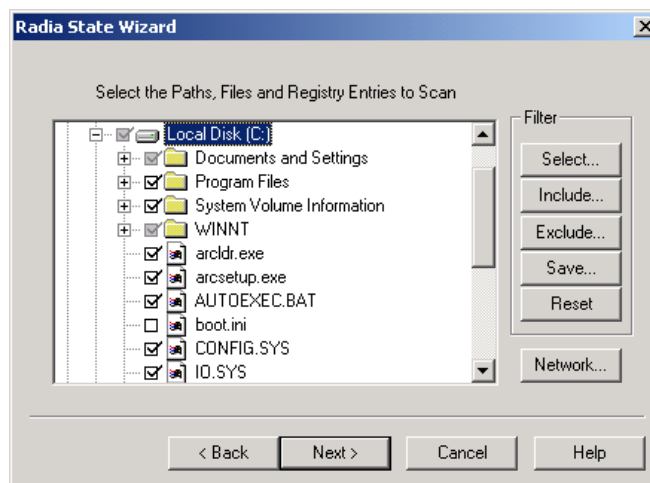
The Select the Install Program Analysis Technique(s) dialog box opens.



8 Select **Before and After Machine Scan Analysis**.

9 Click **Next**.

The Select the Paths, Files and Registry Entries to Scan dialog box opens.

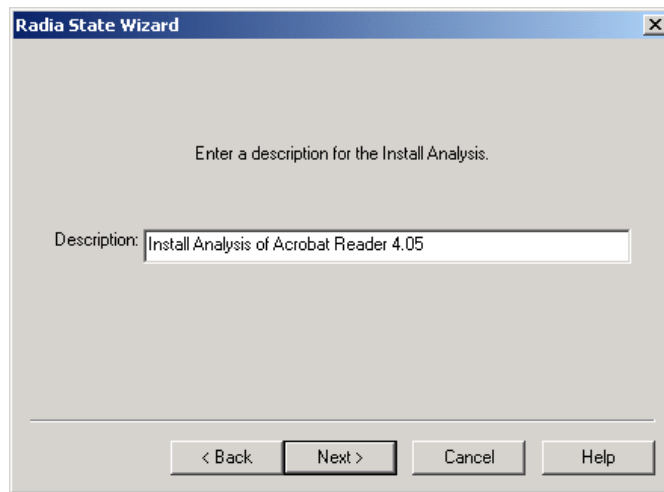


10 Select the files and registry information to include in your scan. For the purpose of this exercise, select the Local Disk (C:) drive only. Clear the check boxes for all other selected drives.

- ▶ Do not *over-filter* the initial scan. You may not realize that an application places files in various directories, and if you filter that directory out in the beginning stages, the changes will not be reflected in the final package. Additional detailed filtering can be done in the Radia Library Wizard.
Refer to the *Extensions for Windows Installer Guide* for more information.
- ▶ Press the **F10** key on your keyboard if you want to expand a dialog box to full-size. To return to the Wizard, press **F10** again, or close the dialog box.

11 Click **Next**.

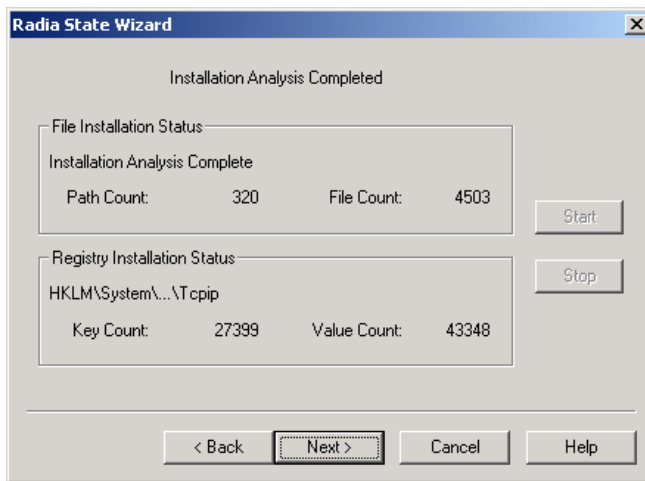
The Install Analysis Description dialog box opens.



12 In the **Description** text box, type a description for the state you are creating.

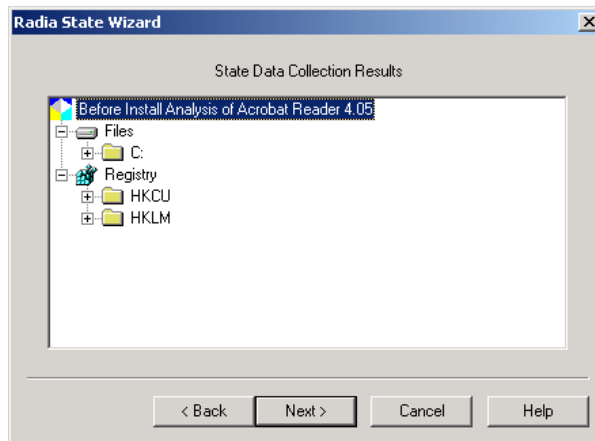
13 Click **Next**.

The Installation Analysis Completed dialog box opens and performs the initial scan of the machine.



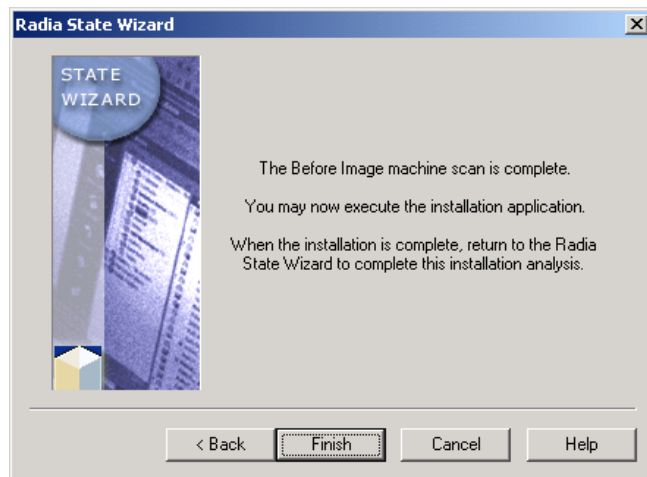
14 When the scan is finished, click **Next**.

The State Data Collection Results dialog box opens. This dialog box shows the results of the scan.



15 Click **Next**.

The Before Image machine scan is complete dialog box opens.



16 Click **Finish**.

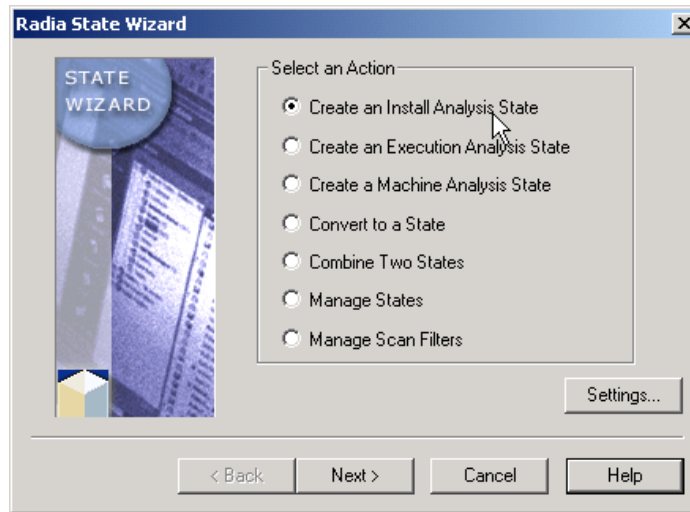
Now that the before scan is done, install your application. For this example, we are using Adobe Acrobat Reader, available at www.adobe.com.

Creating an After and Delta State

After you have created the before analysis and installed the application, you need to complete the analysis to obtain a full and accurate view of the resources required by the application. To do this, you will create after and delta installation state files.

To create After and Delta State Files

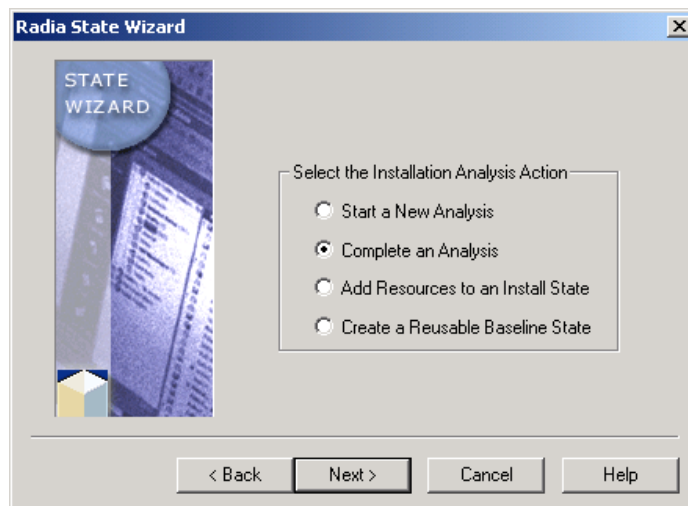
- 1 Double-click the Radia State Generator icon.



2 Select the **Create an Install Analysis State** radio button.

3 Click **Next**.

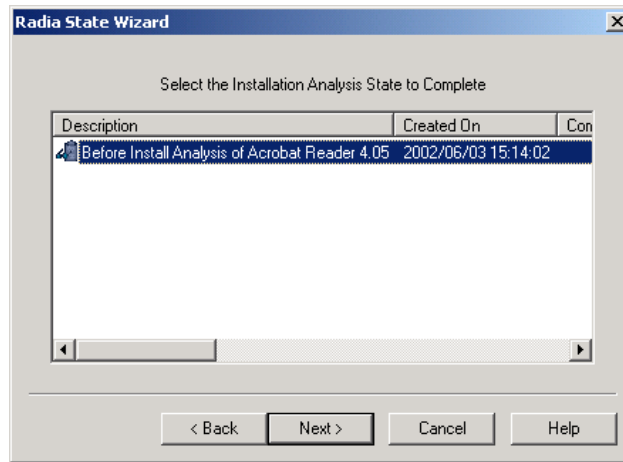
The Select the Installation Analysis Action dialog box opens.



4 Select **Complete an Analysis**.

5 Click **Next**.

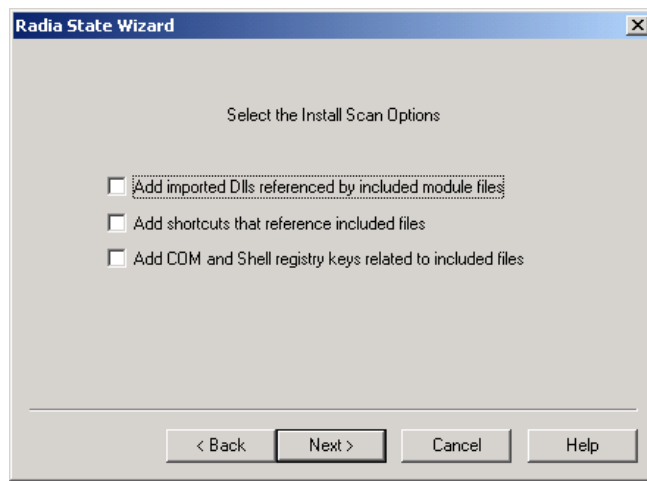
The Select the Installation Analysis State to Complete dialog box opens.



6 Select the Installation Analysis State to complete. In this example, we selected **Before Install Analysis of Acrobat Reader 4.05**.

7 Click **Next**.

The Select the Install Scan Options dialog box opens.



— **Add imported DLLs referenced by included module files**

Gathers information on the DLLs that are referred to by components in the application.

— **Add shortcuts that reference included files**

Gathers shortcuts that point to included files in the scan that may not have been discovered.

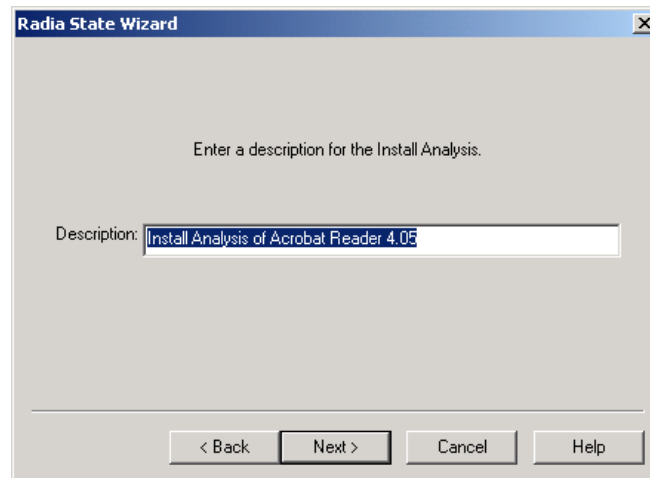
— **Add COM and Shell registry keys related to included files**

Gathers registry information that refers to files included in the scan that may not have been discovered.

These options will gather significantly more information about an application and should be used only when proper filtering guidelines are in place. Typically, you will not need to use these options when performing an installation analysis of an installation program. For the purpose of this exercise, do not select any of the check boxes.

8 Click **Next**.

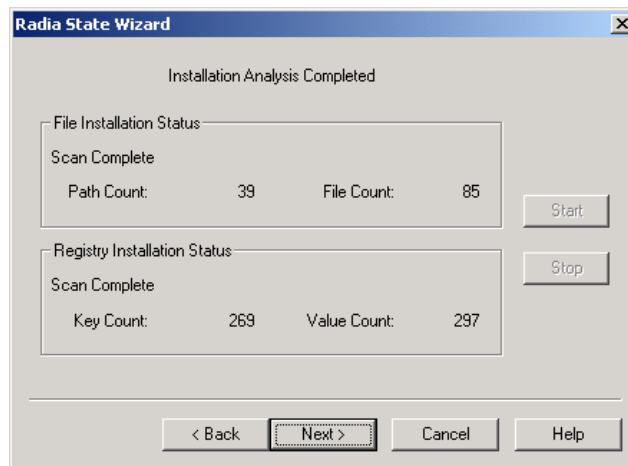
The Install Analysis Description dialog box opens.



9 In the **Description** text box, you can change the description of your final state.

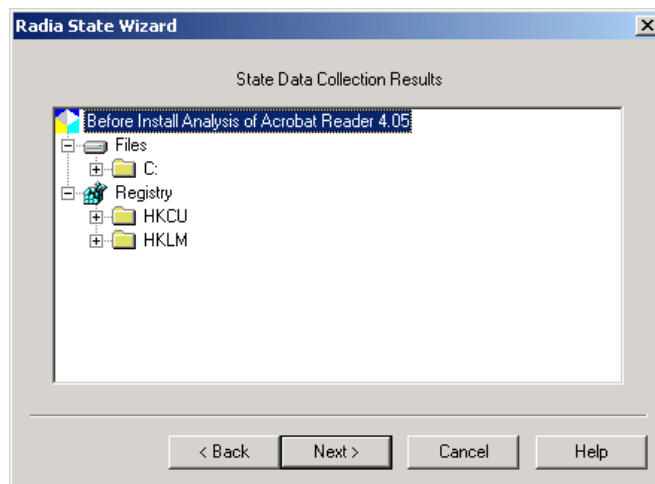
10 Click **Next**.

The scan of the machine runs and compares the before and after scans to create a Delta state containing the differences between the two.



11 When the scan is finished, click **Next**.

The State Data Collection Results dialog box opens.



This dialog box shows the resources captured in the state file.

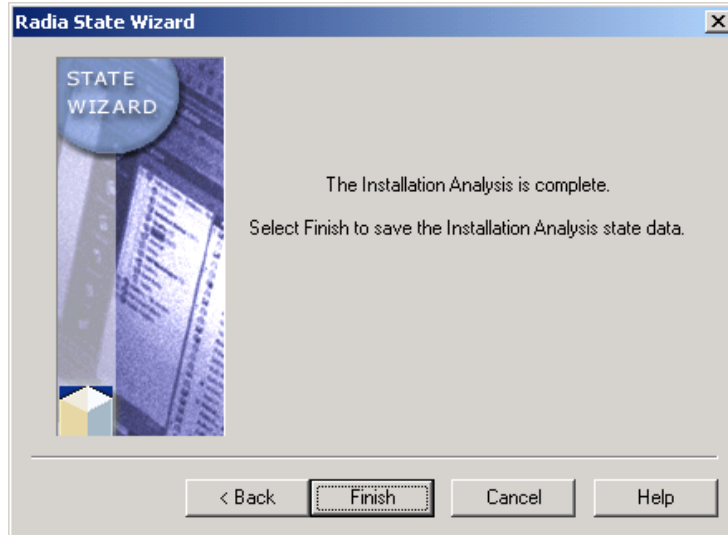
≠ signifies that this file has been changed between the before and after snapshot.

= signifies that the file has been scanned, but there is no change between the snapshots. (This designator will not appear if you are only performing a Before and After analysis).

- + signifies that the file has been added and did not exist prior to application installation.
- signifies that the file has been removed and no longer exists on the system.

12 Click **Next**.

The Installation Analysis is complete dialog box opens.



13 Click **Finish**.

Now use the Configuration Analyzer to import, view, and analyze your data.

Building Radia State Files with the System Explorer

Use the System Explorer, Build State File function to export an existing Radia Service as a set of state files into the Radia Application Knowledge Base.

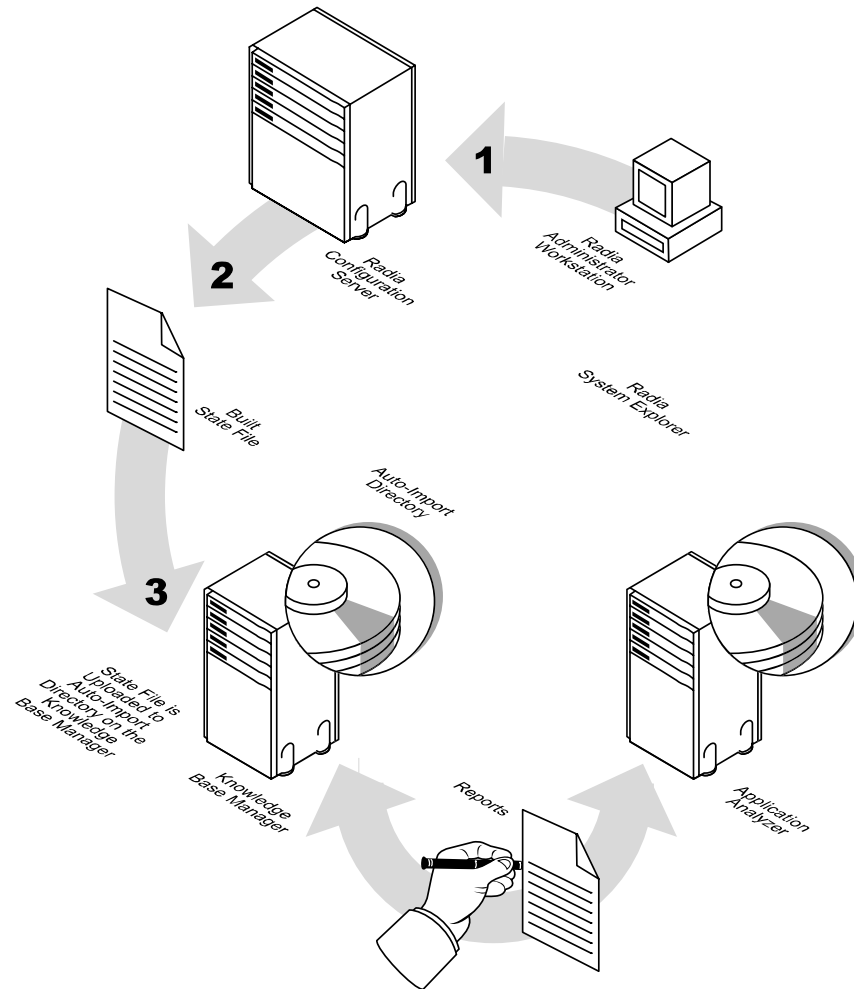


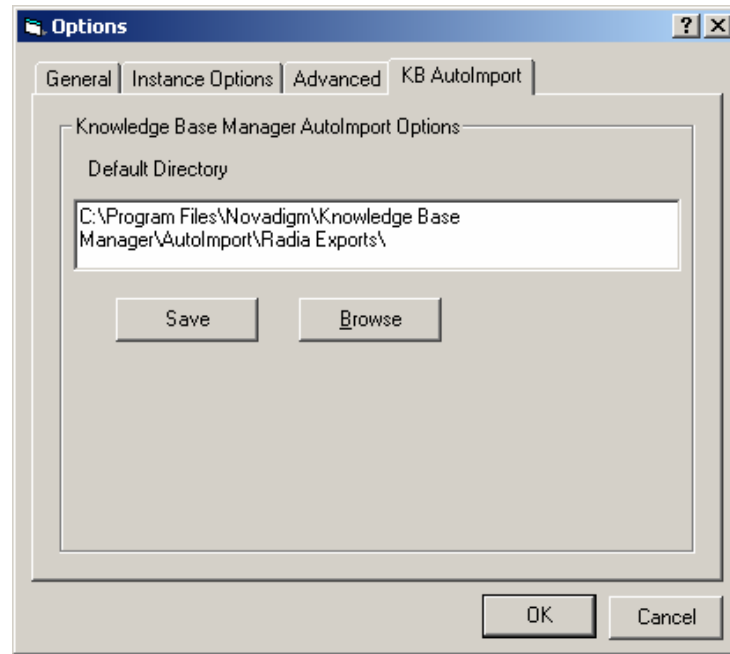
Figure 7: State file export process.

Multiple state files can be built simultaneously. A separate state file is created in the Radia Application Knowledge Base for each combination of

operating system and package connection that the application service supports.

- ▶ The Build state file function is designed for native Radia packages for Windows operating systems. If you attempt to export a non-Windows service, you will receive an error message.

In the System Explorer go to **View**→**Options**→**KB AutoImport**, to define the Knowledge Base Manager default auto-import directory.



State File Creation Process

The state file creation process is accomplished in two phases; discovery and execution. During the discovery phase, temporary values are generated for any variables that are found within the package that are not defined in the operating system specific `.ini` file (this `.ini` file is located in the `varsets` subdirectory of the state file folder). During the build process, you are prompted to enter a more meaningful value for these variables.

As stated above, all variable values are defined within the associated operating system `.ini` file located within the `varsets` directory. When a value cannot be found during the discovery phase, a temporary variable is created, but in certain circumstances, the temporary variable may not be created in

the context intended and the build process will fail. This occurs only when a specific value has been assigned to a variable present within a ZSTOP expression within your package, for example, resolving an expression based on a specific memory size. To ensure the build process completes successfully, add any special case variable values to the .ini file before creating the state file.


Example:

An application contains a package level ZSTOP expression such as:

```
SPACE (TRANSLATE (WORD (EDMGETV (ZCONFIG, ZHDWMEM), 1), , ", " ), 0) <
131072000
```

In this case, the variable ZCONFIG.ZHDWMEM must be 128 MB (131072000) or higher for the package to deploy. By adding the item ZHDWMEM to the ZCONFIG section of the operating system specific .ini file, the discovery process will continue correctly. The updated .ini file would contain the following:

```
[ZCONFIG]
ZHDWMEM = 131072001
```

 In the example above, the value added to the .ini file is one (1) larger so that the expression (as defined above) will fail allowing resolution to continue for this package.

To build a state file using the System Explorer

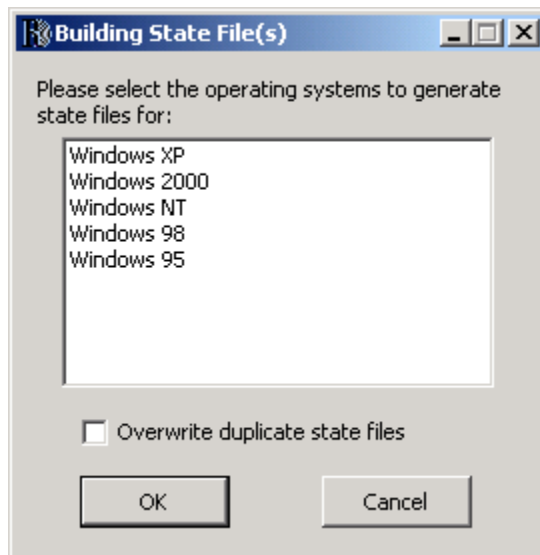
- 1 Start the System Explorer.
- 2 Double-click **Primary**.
- 3 Double-click **Software**.
- 4 Double-click **Application**.
- 5 Right-click the application, or select and right-click the applications for which you would like to build state files.



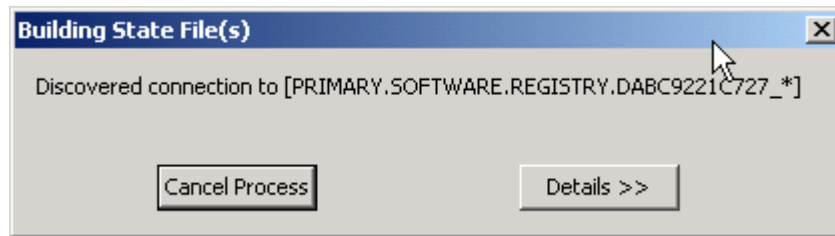
► You can select multiple applications by holding the **Ctrl** key on your keyboard and clicking the names of the applications. Use the **Shift** key to select a group of applications.

- 6 Select **Build State File** from the shortcut menu.

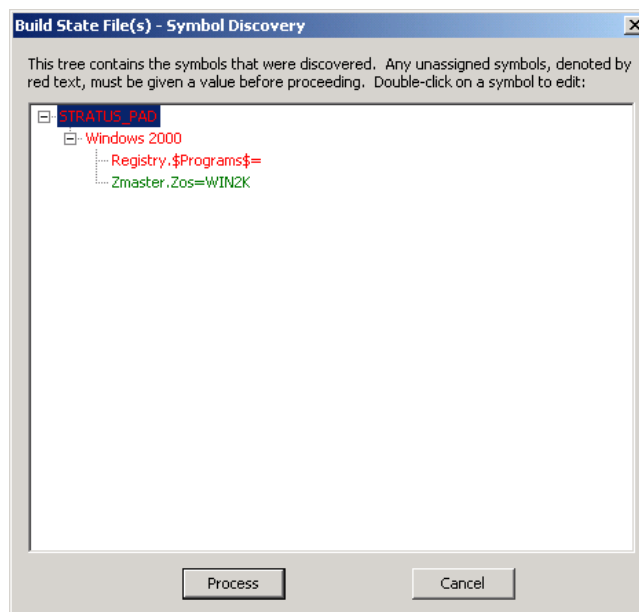
The Build State File(s) window opens.



- 7 Select the operating system for which you would like to generate the state file. If you want to overwrite existing state files with an updated version, select the check box.
- 8 Click **OK**. The state file build process begins.



- 9 When the process is finished, a window will open displaying the any symbols that were discovered.



- 10 Expand the tree view to display all the symbols that were discovered. Double-click each symbol displayed in red to assign an appropriate value before proceeding.

Any symbols that you define here are stored in an OS specific INI file in the `varsets` folder. For example, if any values were defined for a

Windows 2000 state file, they would be stored in the varsets directory in a file called `win2k.ini`.

- 11 Click **Process** when finished. A processing window will open.
- 12 When the processing is complete click **OK**.

During the processing, a state file is built for the selected packages in the Radia Automated Import directory. If this directory is being monitored by the Radia Knowledge Base Manager service, then the state files and associated Radia Service entries are imported into the Radia Application Knowledge Base.

Use the **Configuration Analyzer** to view the exported state file data.

Summary

- Use the System Explorer to export existing services as state files into the Radia Application Knowledge Base.

Glossary

Application Extension Framework (AXF)

AXF is an extendible framework that resides on each workstation or server to monitor, report on, and control selected applications.

Application Extensions

Application Extensions are loaded by the Application Extension Framework to control some aspect of application processing. Application Extensions may be simple or complex in nature and enhance the ability to manage the application, such as protecting an application from corruption.

AXF Log File

The Application Extension Framework maintains a log of all extensions that were loaded for each launch of an application. This is an audit file containing a history of the extensions and any extraordinary events produced for the Radia Packager for Windows Installer protected applications.

Comma-Separated-Value (.CSV) Formatted Files

CSV files are data files that have each record value separated by a comma. CSV files are created by Radia Packager for Windows Installer from a state file so the state file information can be used by other software applications.

configuration set

This contains the configuration information for an application extension. Each configuration set is given a user-allocated unique name.

custom actions

A type of state file that contains customized application processing to extend the functionality of the Windows Installer package. Custom action files include Installation Actions that execute a VBScript, Java Script, EXE, or DLL based on your defined conditions, and may use Custom Data.

Delta State File

A type of state file that contains a definitive list of the differences between any two state files that are compared.

filter state file

A type of state file that contains the filtering criteria used during a machine scan or other state file build process.

impact state file

A type of state file that contains all resources changed by an application program during its execution.

install state file

A type of Delta State File that combines a Machine Scan Delta State and a Radia Impact State to achieve the best of both techniques. Install states identify the resources needed for an install.

Configuration Analyzer

A console for viewing, storing, and comparing application data. Backed by an SQL database, the Configuration Analyzer allows you to import state files created by the Radia State Wizard or the Radia Package Wizard. This will allow you to compare application information for conflicts before creating packages for deployment and to compare these packages with applications that have been deployed.

Configuration Analyzer Project

A Configuration Analyzer project is a logical grouping comprised of the application and machine state files that have been exported to the Radia Application Knowledge Base.

intersection state file

A type of state file that contains a definitive list of all the resources shared by any two state files.

package difference transform

A package difference transform creates a transform containing the differences between two package files. The packages must not have any file, registry, or shortcut differences.

packaging

The act of identifying and gathering the components of an application.

[permission state file](#)

A type of state file that contains a set of Access Control Groups, each of which has been assigned one or more group or user types with corresponding rights. Library resources can be assigned to the permissions of a specific Access Control Group. The assigned permissions are implemented when the Windows Installer package is installed, thus providing control over user access authority at installation time.

[profile state file](#)

A type of state file that contains a definitive list of all resources needed by an application program to execute properly.

[project tree](#)

The diagram showing the hierarchy of Radia' workspaces and projects, which is displayed when IStudio is executed.

[promoting](#)

When you promote a package that was created with the Radia Publisher, you are storing the package in the Radia Database.

[publishing](#)

The act of promoting the result of packaging to the Radia Database.

[Radia Packager for Windows Installer Menu](#)

A single menu that offers a process view as well as quick access to the Radia Default Settings dialog box, all Radia Wizards, and the Configuration Analyzer.

[Configuration Analyzer Workspace](#)

A Configuration Analyzer workspace is the user's view into the Radia Application Knowledge Base based on the user's authority. Workspaces contain projects.

[Radia Application Knowledge Base](#)

A historical database of application and machine state information.

[Radia Insulation Wizard](#)

A wizard that guides the user in insulating Radia Libraries and Applications.

Radia Library Wizard

A wizard that guides the user in building Radia libraries.

Radia Package Wizard

A wizard that builds Windows Installer package files (.MSI) and patch package files (.MSP).

Radia State Wizard

A wizard that guides the user in the creation of different state file types.

Radia/Insulate

This component of Radia insulates, protects, and ensures application reliability by providing a "wall" around an application, insulating and protecting it from other applications.

scan state file

A type of state file that contains selected directory, file, and registry information created by scanning a workstation.

self-registration

A task that adds a registry setting that indicates where to load the modules required for the component to execute properly.

state file

A highly-tuned file format that is used to store information about an application or workstation at a particular point in time. There are several different types of state files.

transform files

A user interface transform executes the package installation's user interface and saves all responses in a transform file. Although the product appears to be installed, it is not. A package difference transform creates a transform containing the differences between two package files. The packages must not have any file, registry, or shortcut differences.

union interface transform file

A user interface transform executes the package installation's user interface and saves all responses in a transform file. Although the product appears to be installed, it is not.

union state file

A type of state file that contains a definitive list of all the resources contained by adding each of the resources contained in any two state files.

ZSTOP

A ZSTOP expression is used to stop the resolution of an instance based on certain criteria. For example, create a ZSTOP expression to deploy a ZSERVICE instance only to client computers with a particular operations system.

Index

A

| | |
|---|----|
| access rights | |
| assigning | 43 |
| shared objects | 44 |
| View Object | 42 |
| Workspace Owner | 43 |
| ADD OBJECTS | 44 |
| adding | |
| COM keys | 74 |
| imported DLLs | 73 |
| keys | 74 |
| shell registry keys | 74 |
| shortcuts | 74 |
| state to state file analysis | 58 |
| administrator console | 8 |
| After State File | 66 |
| creating | 71 |
| description | 66 |
| AKB_Developer | 45 |
| AKB_HelpDesk | 44 |
| AKB_Integrator | 44 |
| AKB_QualityAssurance | 44 |
| analysis | |
| saving and loading | 59 |
| analysis of state files | |
| adding a state | 58 |
| removing a state | 58 |
| Analyze an Installation Program | 67 |
| Application Extension Framework, definition | 85 |
| Application Extensions, definition | 85 |
| authority to create workspace | 43 |
| AXF | 85 |
| AXF log file, definition | 85 |

B

| | |
|--|----|
| Before and After Machine Scan Analysis check box | 68 |
| Before State File | |
| creating | 66 |
| description | 66 |
| Build State File | |
| function of Radia System Explorer | 77 |
| menu option | 80 |

C

| | |
|---|----------------|
| COM keys, adding | 74 |
| comma-separated-value | <i>See</i> CSV |
| comparing state files | 56 |
| Comparison Column Width | 40 |
| Comparison Reports | |
| Report Delimiter | 41 |
| Report Path | 41 |
| Reports File Name Prefix | 41 |
| Complete an Analysis radio button | 72 |
| configuration set, definition | 85 |
| configuring | 31 |
| Create an Install Analysis State radia button | 72 |
| Create an Install Analysis State radio button | 67 |
| creating | |
| After State Files | 71 |
| Before State Files | 66 |
| Delta State Files | 71 |
| install analysis state | 67, 72 |
| project | 49 |
| state file | 78 |
| user IDs for Radia Application Knowledge Base | 42 |
| workspace | 43, 48 |
| CSV files | 85 |
| custom actions, definition | 85 |

D

| | |
|-------------------------|----|
| Database Schema | |
| installing..... | 16 |
| DataCRC..... | 40 |
| DB_OWNER/AKB_ADMIN..... | 44 |
| DELETE OBJECTS..... | 44 |
| Delta State File | |
| creating..... | 71 |
| decription..... | 66 |
| definition..... | 85 |
| DLLs, adding..... | 73 |

E

| | |
|----------------------------|----|
| exporting state files..... | 77 |
|----------------------------|----|

F

| | |
|------------------------------------|----|
| File Comparison Filtering..... | 39 |
| File path..... | 39 |
| File size..... | 40 |
| Module header..... | 40 |
| File path..... | 39 |
| File size..... | 40 |
| filter state file, definition..... | 86 |
| filtering | |
| file comparison..... | 39 |
| registry comparison..... | 40 |

G

| | |
|------------------------|----|
| generating report..... | 61 |
| green check mark..... | 57 |

I

| | |
|--|--------|
| impact state file, definition..... | 86 |
| imported DLLs, adding..... | 73 |
| importing state files..... | 51 |
| install analysis state, creating..... | 67, 72 |
| install state file, definition..... | 86 |
| installation program, analyzing..... | 67 |
| Installed Resources..... | 53 |
| intersection state file, definition..... | 86 |

K

| | |
|-------------------|----|
| keys, adding..... | 74 |
|-------------------|----|

M

| | |
|---------------------------------------|----|
| Microsoft SQL Server | |
| Radia Application Knowledge Base..... | 29 |
| table schema, creating..... | 30 |
| Module Header..... | 40 |

N

| | |
|-----------------------------|----|
| new analysis, starting..... | 67 |
|-----------------------------|----|

O

| | |
|--|----|
| ODBC DSN connection, creating..... | 20 |
| OpenAccess..... | 40 |
| Oracle database scheme, configuring..... | 31 |
| Oracle DBA Studio..... | 31 |

P

| | |
|--|----|
| package difference transform..... | 86 |
| packaging..... | 86 |
| permission state file, definition..... | 87 |
| Permissions dialog box..... | 42 |
| profile state file, definition..... | 87 |
| project tree, definition..... | 87 |
| project, creating..... | 49 |
| promoting, definition..... | 87 |
| publishing, definition..... | 87 |

R

| | |
|---------------------------------------|----|
| Radia Application Knowledge Base | |
| access rights..... | 41 |
| creating..... | 29 |
| defining..... | 29 |
| Oracle..... | 31 |
| populating..... | 48 |
| security..... | 41 |
| SQL Server..... | 29 |
| system requirements..... | 16 |
| user IDs, creating..... | 42 |
| Radia Automated Import directory..... | 82 |

| | |
|--|--------|
| Radia Configuration Analyzer | 86 |
| administrator console..... | 36 |
| Comparison tab | 39 |
| description | 8 |
| Display tab..... | 38 |
| installing..... | 16, 21 |
| logging on..... | 11 |
| permissions | 41 |
| settings..... | 35 |
| system requirements..... | 16 |
| Tools menu..... | 37 |
| Radia Configuration Analyzer Project | 86 |
| Radia Configuration Analyzer Workspace..... | 87 |
| Radia Insulation Wizard | 87 |
| Radia Knowledge Base Manager..... | 82 |
| Radia Library Wizard..... | 88 |
| Radia Package Wizard, definition | 88 |
| Radia Packager for Windows Installer Menu | 87 |
| Radia State Generator | |
| creating state files | 66 |
| description | 25 |
| installing..... | 25 |
| Radia State Wizard | |
| definition..... | 88 |
| Radia System Explorer..... | 77 |
| Radia/Insulate | 88 |
| red X | 58 |
| Registry Comparison Filtering | 40 |
| Data CRC | 40 |
| Open access..... | 40 |
| Usage access | 40 |
| Removed Resources | 53 |
| removing state from state file analysis | 58 |
| RENAME OBJECTS | 44 |
| Report Delimiter..... | 41 |
| Report Path, registry comparison filtering | 41 |
| report, generating..... | 61 |
| Reports File Name Prefix, registry comparison | |
| filtering | 41 |

S

| | |
|-----------------------------------|----|
| scan state file, definition | 88 |
|-----------------------------------|----|

| | |
|--|--------|
| security, Radia Application Knowledge Base | 41 |
| self-registration, definition | 88 |
| shared objects, access rights | 44 |
| Shell registry keys, adding | 74 |
| shortcuts, adding..... | 74 |
| Single Column View..... | 40 |
| SQL Server | |
| Radia Application Knowledge Base | 29 |
| table schema, creating | 30 |
| SQL Server Enterprise Manager | 29 |
| Data Files tab..... | 29 |
| General tab..... | 29 |
| Transaction Log tab..... | 30 |
| Start a New Analysis | 67 |
| state | |
| adding to analysis | 58 |
| removing from analysis | 58 |
| state file | |
| building..... | 79 |
| creating..... | 66, 78 |
| definition | 66, 88 |
| delta | 85 |
| export process..... | 77 |
| filter | 86 |
| impact | 86 |
| intersection..... | 86 |
| permission | 87 |
| profile..... | 87 |
| scan | 88 |
| union | 89 |
| State File Generator | 10 |
| state files | |
| analyzing | 56 |
| comparing | 56 |
| creating..... | 71 |
| description | 8 |
| exporting..... | 77 |
| importing | 51 |
| install..... | 86 |
| types..... | 66 |
| state information, viewing..... | 54 |
| substates | 53 |

T

| | |
|--------------------------------------|----|
| table schema, SQL Server | 30 |
| transform file | |
| definition | 88 |
| union interface | 88 |
| transform, package differences | 86 |

U

| | |
|-----------------------------------|----|
| union state file, definition..... | 89 |
| UsageAccess | 40 |

V

| | |
|---------------------------------|----|
| varsets subdirectory..... | 78 |
| VIEW OBJECTS | 44 |
| View Objects access rights..... | 42 |
| viewing, state information..... | 54 |

W

| | |
|-------------------------------------|--------|
| wizards | |
| insulation | 87 |
| library..... | 88 |
| package..... | 88 |
| state..... | 88 |
| WORKSPACE CREATE..... | 43 |
| Workspace Create authority | 43 |
| WORKSPACE DELETE..... | 43 |
| Workspace Owner, access rights..... | 43 |
| WORKSPACE RENAME | 43 |
| workspace, creating | 43, 48 |

Z

| | |
|---------------|----|
| ZCONFIG | 79 |
| ZHDWMEM | 79 |
| ZSTOP | 89 |