

HP OpenView Adapter Using Radia

for the UNIX and Windows operating systems

Software Version: 2.0

User's Guide

Manufacturing Part Number: T3424-90122

June 2005



Legal Notices

Warranty

Hewlett-Packard makes no warranty of any kind with regard to this document, including, but not limited to, the implied warranties of merchantability and fitness for a particular purpose. Hewlett-Packard shall not be held liable for errors contained herein or direct, indirect, special, incidental or consequential damages in connection with the furnishing, performance, or use of this material.

A copy of the specific warranty terms applicable to your Hewlett-Packard product can be obtained from your local Sales and Service Office.

Restricted Rights Legend

Use, duplication, or disclosure by the U.S. Government is subject to restrictions as set forth in subparagraph (c)(1)(ii) of the Rights in Technical Data and Computer Software clause in DFARS 252.227-7013.

Hewlett-Packard Company
United States of America

Rights for non-DOD U.S. Government Departments and Agencies are as set forth in FAR 52.227-19(c)(1,2).

Copyright Notices

© Copyright 2001-2005 Hewlett-Packard Development Company, L.P.

No part of this document may be copied, reproduced, or translated into another language without the prior written consent of Hewlett-Packard Company. The information contained in this material is subject to change without notice.

Trademark Notices

Linux is a registered trademark of Linus Torvalds.

Microsoft®, Windows®, and Windows® XP are U.S. registered trademarks of Microsoft Corporation.

OpenLDAP is a registered trademark of the OpenLDAP Foundation.

Acknowledgements

PREBOOT EXECUTION ENVIRONMENT (PXE) SERVER
Copyright © 1996-1999 Intel Corporation.

TFTP SERVER
Copyright © 1983, 1993
The Regents of the University of California.

OpenLDAP
Copyright 1999-2001 The OpenLDAP Foundation, Redwood City, California, USA.
Portions Copyright © 1992-1996 Regents of the University of Michigan.

OpenSSL License
Copyright © 1998-2001 The OpenSSLProject.

Original SSLeay License
Copyright © 1995-1998 Eric Young (eay@cryptsoft.com)

DHTML Calendar
Copyright Mihai Bazon, 2002, 2003

Support

Please visit the HP OpenView support web site at:

<http://www.hp.com/managementsoftware/support>

This web site provides contact information and details about the products, services, and support that HP OpenView offers.

HP OpenView online software support provides customer self-solve capabilities. It provides a fast and efficient way to access interactive technical support tools needed to manage your business. As a valuable support customer, you can benefit by using the support site to:

- Search for knowledge documents of interest
- Submit enhancement requests online
- Download software patches
- Submit and track progress on support cases
- Manage a support contract
- Look up HP support contacts
- Review information about available services
- Enter discussions with other software customers
- Research and register for software training

Most of the support areas require that you register as an HP Passport user and log in. Many also require a support contract.

To find more information about access levels, go to:

http://www.hp.com/managementsoftware/access_level

To register for an HP Passport ID, go to:

<http://www.managementsoftware.hp.com/passport-registration.html>

Contents

- 1 Network Node Manager and SNMP 7
 - Establishing the Environment8
 - Install the Novadigm MIB and Novadigm Alarm Category.....8
 - Alarm Display of Novadigm Event11

- 2 Network Node Manager and Radia Inventory Manager 13
 - Query Radia Inventory Manager Data13
 - Viewing Inventory and Event Data for a Specific Node14
 - Win32 Installation15
 - UNIX Installation20
 - Establish the environment.....20

- Index 23

1 Network Node Manager and SNMP

Introduction

Radia can interact with the HP OpenView Network Node Manager (NNM) via integration with Simple Network Management Protocol (SNMP) alerts, and the Radia Inventory Manager. This chapter focuses on the NNM-SNMP combination, and Chapter 2 presents information on the integration of the Radia Inventory Manager and NNM.

Radia with NNM uses SNMP agents in conjunction with the Novadigm MIB and event generation capabilities to communicate between the two systems. The operational status of the Radia Configuration Server is communicated to NNM as events and alerts for display or resolution. A **Novadigm Alarm** category exists in NNM to help console operators quickly identify alerts as being **critical, major, minor, warning, or normal**. The installation of the Novadigm MIB in NNM automatically assigns default event correlations that can be modified by the NNM Administrator to best match the environment definitions. With Radia Adapter for HP OpenView, the functionality of NNM extend beyond being simply a monitoring device, it becomes capable of running a Radia Configuration Server through SNMP **get** and **set** commands. This means NNM can configure and generate trap events, remotely initiate control of the Radia Configuration Server in order to set commands, and retrieve status information using get commands.

Installation

To integrate Radia with the HP OpenView NNM, run an installation batch script (Win32 platforms) or a shell script (UNIX). These processes replace the previous installation and document, *Installing the Novadigm MIB on HP OpenView*.

- UNIX users must be logged in as a **superuser**.
- Win32 users must have administrator rights.

Establishing the Environment

Before running either installation, you must run a script that establishes the required environment variables for NNM in the default installation directory. For UNIX this is

```
/opt/OV/bin/ov.envvars.sh
```

For Win32 it might be found in

```
\opt\OV\bin\ov.envvars.bat
```

If you attempt to run the MIB installation script without first establishing the environment, you will see the following error message:

```
# ./install_mib.sh or \install_mib.bat
OV_BIN has not been set
Please execute ov.envvars.sh (ov.envvars.bat) from the
OpenView bin directory before running this install script
```

Install the Novadigm MIB and Novadigm Alarm Category

Once the environment has been established, run the appropriate script (`install_mib.sh` or `install_mib.bat`) to install the Novadigm MIB. The process will display as follows:

```
# . /opt/OV/bin/ov.envvars.sh or \opt\OV\ov.envvars.bat
# ./install_mib.sh or \install_mib.bat
Loading the Novadigm MIB
Loading Novadigm event trap definitions
```


The Novadigm MIB and Trap Event definitions

have been successfully loaded

The Novadigm MIB and Novadigm Alarm Category have been successfully installed.

As you can see, this script also loads Trap Event definitions into OpenView. From here they can be inspected and manipulated. Once the installation is complete, the Novadigm Alert Alarms category will appear on the NNM console (as in the figure below), and it is into this category that NNM will display events.

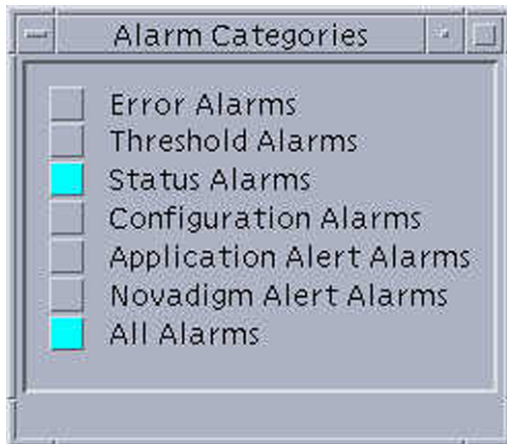


Figure 1 Alarm Categories with Novadigm Alert Alarms

The NNM Administrator can modify the event category defaults for Novadigm-defined alerts with the Novadigm MIB using the root of the NNM console, and selecting **Options** (see the next figure), then **Event Configuration Utility**. From the series of windows that appear, select **Novadigm → Defined Trap Events → Modify Event**, and then select each event to be changed.

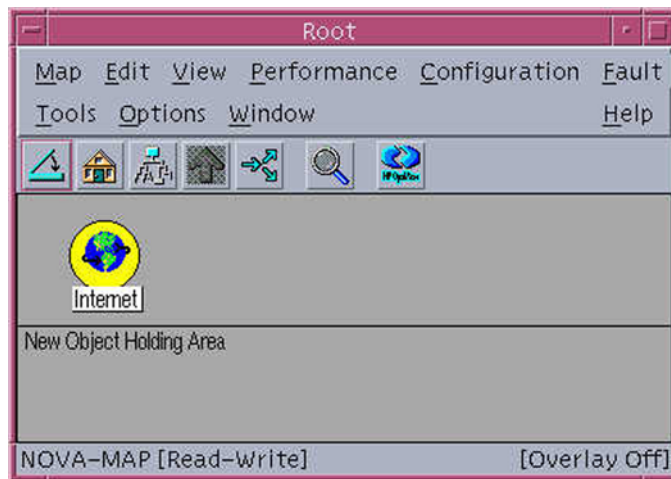


Figure 2 Root window of NNM Console

The default event classifications (Normal, Warning, Minor, Major, and Critical) for each of the Novadigm-defined events are as follows:

```

EVENT notifyCmplt .1.3.6.1.4.1.2133.0.10 "Novadigm Alert Alarms" Normal
EVENT notifyRcvd .1.3.6.1.4.1.2133.0.15 "Novadigm Alert Alarms" Normal
EVENT notifyExecOK .1.3.6.1.4.1.2133.0.20 "Novadigm Alert Alarms" Normal
EVENT connectInit .1.3.6.1.4.1.2133.0.25 "Novadigm Alert Alarms" Normal
EVENT demonConnOK .1.3.6.1.4.1.2133.0.30 "Novadigm Alert Alarms" Normal
EVENT verifyCmplt .1.3.6.1.4.1.2133.0.35 "Novadigm Alert Alarms" Normal
EVENT resourceRcvd .1.3.6.1.4.1.2133.0.40 "Novadigm Alert Alarms" Normal
EVENT stgFileRcvd .1.3.6.1.4.1.2133.0.45 "Novadigm Alert Alarms" Normal
EVENT stgFileSnt .1.3.6.1.4.1.2133.0.50 "Novadigm Alert Alarms" Normal
EVENT mgrFileRcvd .1.3.6.1.4.1.2133.0.55 "Novadigm Alert Alarms" Normal
EVENT versActivate .1.3.6.1.4.1.2133.0.65 "Novadigm Alert Alarms" Normal
EVENT timerElmtInit .1.3.6.1.4.1.2133.0.70 "Novadigm Alert Alarms" Normal
EVENT timerOK .1.3.6.1.4.1.2133.0.75 "Novadigm Alert Alarms" Normal
EVENT clientCmplt .1.3.6.1.4.1.2133.0.100 "Novadigm Alert Alarms" Normal
EVENT stagerStart .1.3.6.1.4.1.2133.0.110 "Novadigm Alert Alarms" Normal
EVENT stagerShutdown .1.3.6.1.4.1.2133.0.130 "Novadigm Alert Alarms" Minor
EVENT appeventInstallOK .1.3.6.1.4.1.2133.0.135 "Novadigm Alert Alarms" Normal
EVENT appeventUninstallOK .1.3.6.1.4.1.2133.0.140 "Novadigm Alert Alarms" Minor
EVENT appeventUpdateOK .1.3.6.1.4.1.2133.0.145 "Novadigm Alert Alarms" Normal
EVENT appeventRepairOK .1.3.6.1.4.1.2133.0.150 "Novadigm Alert Alarms" Normal
EVENT appeventVerifyOK .1.3.6.1.4.1.2133.0.155 "Novadigm Alert Alarms" Normal
EVENT appeventActivationOK .1.3.6.1.4.1.2133.0.160 "Novadigm Alert Alarms" Normal
EVENT appeventDeactivationOK .1.3.6.1.4.1.2133.0.165 "Novadigm Alert Alarms" Normal
EVENT notifyRejectID .1.3.6.1.4.1.2133.0.515 "Novadigm Alert Alarms" Minor
EVENT notifyRejectPwd .1.3.6.1.4.1.2133.0.520 "Novadigm Alert Alarms" Minor
EVENT notifyExecNG .1.3.6.1.4.1.2133.0.525 "Novadigm Alert Alarms" Major
EVENT demonConnNG .1.3.6.1.4.1.2133.0.530 "Novadigm Alert Alarms" Major
EVENT stgCnctFail .1.3.6.1.4.1.2133.0.535 "Novadigm Alert Alarms" Minor
EVENT timerNG .1.3.6.1.4.1.2133.0.540 "Novadigm Alert Alarms" Major

```

```

EVENT clientCnctNG .1.3.6.1.4.1.2133.0.545 "Novadigm Alert Alarms" Major
EVENT fileRecvFail .1.3.6.1.4.1.2133.0.555 "Novadigm Alert Alarms" Major
EVENT clientNoSpace .1.3.6.1.4.1.2133.0.560 "Novadigm Alert Alarms" Major
EVENT clientLowLicense .1.3.6.1.4.1.2133.0.570 "Novadigm Alert Alarms" Minor
EVENT stagerStartNG .1.3.6.1.4.1.2133.0.580 "Novadigm Alert Alarms" Major
EVENT clntCommErr .1.3.6.1.4.1.2133.0.680 "Novadigm Alert Alarms" Minor
EVENT clntMemAlloc .1.3.6.1.4.1.2133.0.690 "Novadigm Alert Alarms" Minor
EVENT clntObjProc .1.3.6.1.4.1.2133.0.700 "Novadigm Alert Alarms" Minor
EVENT clntResFail .1.3.6.1.4.1.2133.0.710 "Novadigm Alert Alarms" Minor
EVENT clntSvcFail .1.3.6.1.4.1.2133.0.720 "Novadigm Alert Alarms" Minor
EVENT clntSyntaxErr .1.3.6.1.4.1.2133.0.730 "Novadigm Alert Alarms" Minor
EVENT clntOtherErr .1.3.6.1.4.1.2133.0.740 "Novadigm Alert Alarms" Minor
EVENT appeventInstallFailed .1.3.6.1.4.1.2133.0.745 "Novadigm Alert Alarms" Major
EVENT appeventUninstallFailed .1.3.6.1.4.1.2133.0.750 "Novadigm Alert Alarms" Major
EVENT appeventUpdateFailed .1.3.6.1.4.1.2133.0.755 "Novadigm Alert Alarms" Major
EVENT appeventRepairFailed .1.3.6.1.4.1.2133.0.760 "Novadigm Alert Alarms" Major
EVENT appeventVerifyFailed .1.3.6.1.4.1.2133.0.765 "Novadigm Alert Alarms" Major
EVENT appeventActivationFailed .1.3.6.1.4.1.2133.0.770 "Novadigm Alert Alarms" Major
EVENT appeventDeactivationFailed .1.3.6.1.4.1.2133.0.775 "Novadigm Alert Alarms" Major
EVENT managerStarting .1.3.6.1.4.1.2133.0.2000 "Novadigm Alert Alarms" Normal
EVENT managerStartupLogFailure .1.3.6.1.4.1.2133.0.2005 "Novadigm Alert Alarms" Major
EVENT managerLicenseEnd .1.3.6.1.4.1.2133.0.2010 "Novadigm Alert Alarms" Major
EVENT managerStarted .1.3.6.1.4.1.2133.0.2015 "Novadigm Alert Alarms" Normal
EVENT managerLicenseWarn .1.3.6.1.4.1.2133.0.2020 "Novadigm Alert Alarms" Warning
EVENT managerShuttingDown .1.3.6.1.4.1.2133.0.2025 "Novadigm Alert Alarms" Warning
EVENT notifySent .1.3.6.1.4.1.2133.0.2030 "Novadigm Alert Alarms" Normal
EVENT notifyConnectFailed .1.3.6.1.4.1.2133.0.2035 "Novadigm Alert Alarms" Warning
EVENT managerDBSpaceLow .1.3.6.1.4.1.2133.0.2040 "Novadigm Alert Alarms" Minor
EVENT managerLogSpaceLow .1.3.6.1.4.1.2133.0.2045 "Novadigm Alert Alarms" Minor
EVENT managerConnectTimeout .1.3.6.1.4.1.2133.0.2050 "Novadigm Alert Alarms" Minor
EVENT managerConnectKilled .1.3.6.1.4.1.2133.0.2055 "Novadigm Alert Alarms" Warning
EVENT managerConnectLost .1.3.6.1.4.1.2133.0.2060 "Novadigm Alert Alarms" Minor
EVENT managerConnectHardLocked .1.3.6.1.4.1.2133.0.2065 "Novadigm Alert Alarms" Warning
EVENT managerConnectTaskLimit .1.3.6.1.4.1.2133.0.2070 "Novadigm Alert Alarms" Warning
EVENT managerConnectIpDisabled .1.3.6.1.4.1.2133.0.2075 "Novadigm Alert Alarms" Minor
EVENT managerConnectNbDisabled .1.3.6.1.4.1.2133.0.2080 "Novadigm Alert Alarms" Minor
EVENT managerConnectLu2Disabled .1.3.6.1.4.1.2133.0.2085 "Novadigm Alert Alarms" Minor
EVENT managerConnectLu62Disabled .1.3.6.1.4.1.2133.0.2090 "Novadigm Alert Alarms" Minor
EVENT managerConnectNwDisabled .1.3.6.1.4.1.2133.0.2095 "Novadigm Alert Alarms" Minor
EVENT managerConnectMSPXDisabled .1.3.6.1.4.1.2133.0.2100 "Novadigm Alert Alarms" Minor
EVENT managerMethodTimedOut .1.3.6.1.4.1.2133.0.2105 "Novadigm Alert Alarms" Warning
EVENT managerMethodFailed .1.3.6.1.4.1.2133.0.2110 "Novadigm Alert Alarms" Minor
EVENT managerZerror .1.3.6.1.4.1.2133.0.2115 "Novadigm Alert Alarms" Minor
EVENT managerLogMsg .1.3.6.1.4.1.2133.0.3000 "Novadigm Alert Alarms" Normal

```

Alarm Display of Novadigm Event

The next figure shows the Novadigm Alert Alarms Browser of the NNM Console.

Novadigm Alert Alarms Browser						
File Actions View						
Ack	Cor	Severity	Date/Time	Source	Message	
		Major	Tue Jan 02 16:10:39	steveo-sun	*Failed while installing an application: 208.244.225.188 STEVED APPEVENT.ZSVNAME Error setting	
		Normal	Thu Jan 04 10:26:08	steveo-sun	*An application was successfully installed: 208.244.225.188 STEVED Solaris Service Test Jan 4, 2	
		Normal	Thu Jan 04 12:50:19	steveo-sun	*An application was successfully installed: 208.244.225.188 STEVED Solaris Service Test Jan 4, 2	
		Normal	Thu Jan 04 13:28:39	steveo-sun	*An application was successfully installed: 208.244.225.188 STEVED Solaris Service Test Jan 4, 2	
		Normal	Thu Jan 04 14:16:48	steveo-sun	*An application was successfully installed: 208.244.225.188 STEVED Solaris Service Test Jan 4, 2	
		Normal	Thu Jan 04 14:20:42	steveo-sun	*An application was successfully installed: 208.244.225.188 STEVED Solaris Service Test Jan 4, 2	
		Normal	Thu Jan 04 14:56:42	steveo-sun	*An application was successfully installed: 208.244.225.188 STEVED Solaris Service Test Jan 4, 2	
		Normal	Thu Jan 04 14:58:48	steveo-sun	*An application was successfully installed: 208.244.225.188 STEVED Solaris Service Test Jan 4, 2	
		Normal	Thu Jan 04 15:10:54	steveo-sun	*An application was successfully installed: 208.244.225.188 STEVED Solaris Service Test Jan 4, 2	
		Normal	Thu Jan 04 15:14:09	steveo-sun	*An application was successfully installed: 208.244.225.188 STEVED Solaris Service Test Jan 4, 2	
		Normal	Thu Jan 04 15:17:55	steveo-sun	*An application was successfully installed: 208.244.225.188 STEVED Solaris Service Test Jan 4, 2	
		Normal	Thu Jan 04 15:22:29	steveo-sun	*An application was successfully installed: 208.244.225.188 STEVED Solaris Service Test Jan 4, 2	
		Normal	Thu Jan 04 15:41:31	steveo-sun	*An application was successfully installed: 208.244.225.188 STEVED Solaris Service Test Jan 4, 2	
		Normal	Thu Jan 04 15:44:48	steveo-sun	*An application was successfully installed: 208.244.225.188 STEVED Solaris Service Test Jan 4, 2	
		Normal	Thu Jan 04 15:47:30	steveo-sun	*An application was successfully installed: 208.244.225.188 STEVED Solaris Service Test Jan 4, 2	
		Normal	Thu Jan 04 16:06:06	steveo-sun	*An application was successfully installed: 208.244.225.188 STEVED Solaris Service Test Jan 4, 2	

26 Alarms - Critical:0 Major:1 Minor:0 Warning:0 Normal:25

Figure 3 NNM Console/Novadigm Alert Alarms Browser with a defined Major event

2 Network Node Manager and Radia Inventory Manager

Introduction

The Radia Adapter for HP OpenView enhances the OpenView Network Node Manager (NNM) versatility by adding the ability to:

- Launch the web browser and access the Radia Integration Server from the NNM **Tools** menu. The Radia Integration Server can query any of the inventory and/or event data stored by Radia Inventory Manager.
- Right-click on a node that is displayed in the NNM user interface and launch the web browser to view inventory and event data for that node.

This section explains these abilities, and describes how to install them in NNM.

Query Radia Inventory Manager Data

You can launch the web browser to access Radia Inventory Manager (RIM) data stored on the Radia Integration Server from an NNM menu choice. In NNM, select the **Tools** menu, and on the drop-down menu, click **Radia Inventory Manager**, as in the next figure.

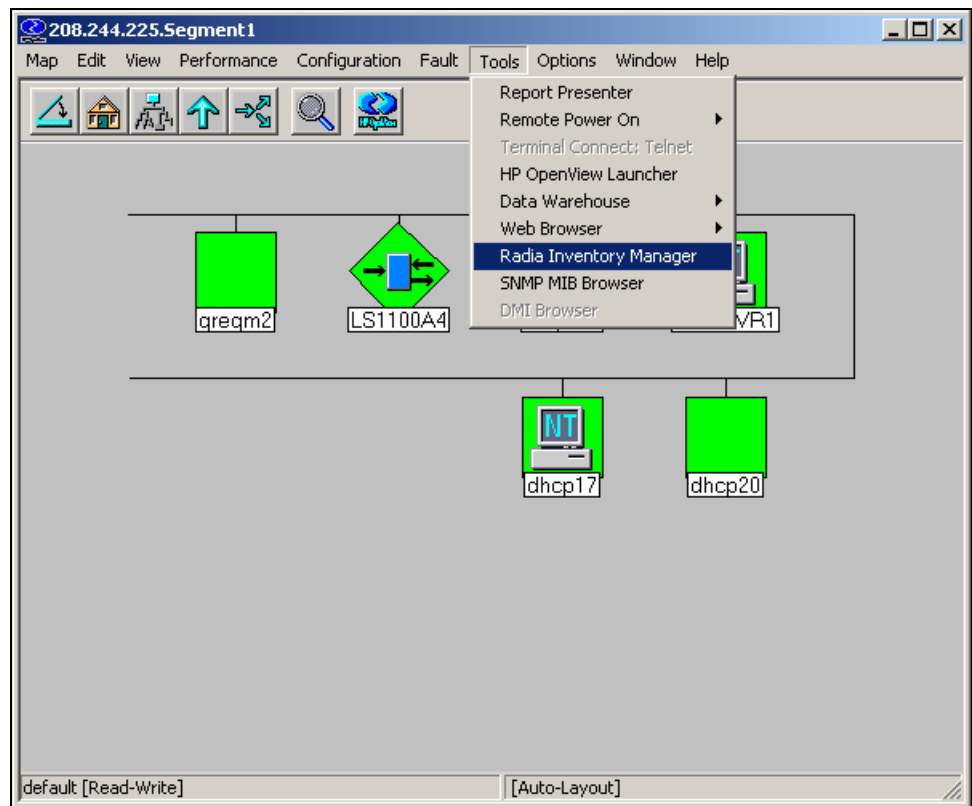


Figure 4 Tools drop-down menu

The web browser will open, displaying the Radia Integration Server home page. Use the Radia Integration Server to query inventory and/or event data stored by Radia Inventory Manger. See the Radia Inventory Manager documentation for complete information about these capabilities.

Viewing Inventory and Event Data for a Specific Node

Right-click any node in the NNM display, and from the shortcut menu select **RIM Properties**.

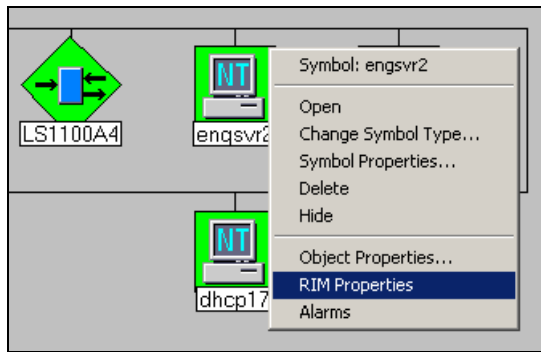


Figure 5 NNM display node pop-up menu

The web browser will open, displaying the inventory and/or event data collected by the Radia Inventory Manager for the selected node. See the Radia Inventory Manager documentation for details on how to navigate the browser display to view all of the data for the selected node.

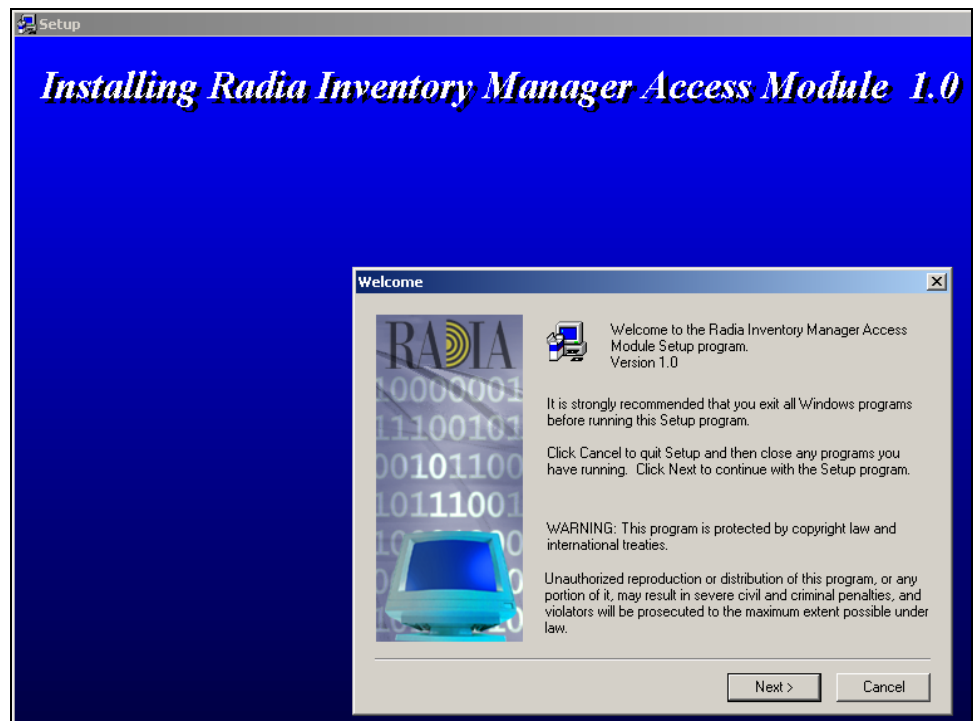
Installation

Prior to installing the Radia Inventory Manager Access Module, make sure that NNM is not running.

Win32 Installation

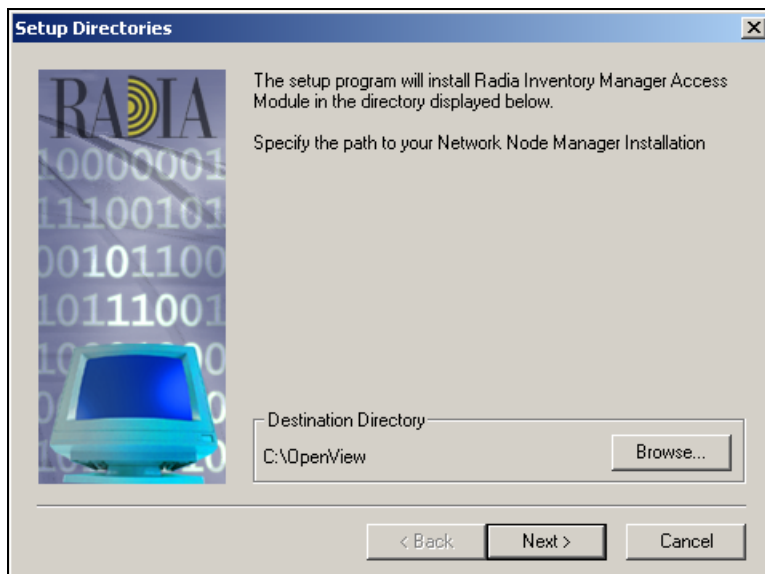
To install the Radia Inventory Manager Access Module

- 1 On the computer that runs NNM, launch the Radia Inventory Manager Access Module `setup.exe` to begin the installation. The installation program will open, similar to the following:



2 Click **Next** to continue.

The Setup Directories dialog box opens-.

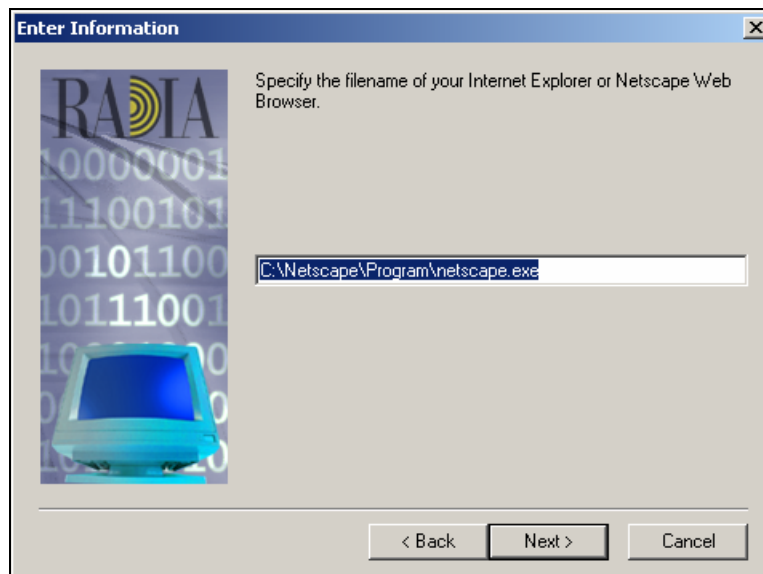


- 3 Specify the directory in which to install the Radia Inventory Manager Access Module.

This Destination Directory must be the location where NNM resides on this machine.

- ▶ The installation program will detect this location from the Registry, and suggest it as a default. You shouldn't need to change the suggested location.

When the correct location is displayed, click **Next** to continue.



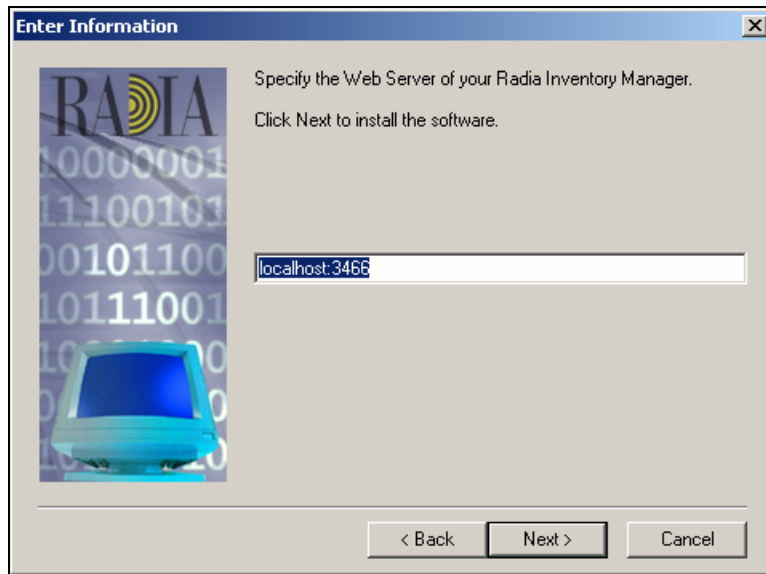
- 4 Specify the file name of your web browser. Enter the full path and name of the browser's executable into the text box.



The installation program obtains, from the Registry, the name and path to the default web browser's executable, and displays them in this dialog box. You do not need to change this unless you want to use a browser other than the computer's default browser.

Click **Next** to continue.

A second Enter Information dialog box opens.

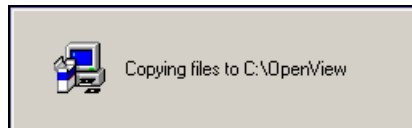


- 5 Enter the IP address (or DNS name) and port for the Radia Integration Server. Concatenate them, using a colon, as shown above.

This example shows that the Radia Integration Server is running on the same computer as NNM (localhost) and is using the Radia Integration Server default port (3466).

Click **Next** to continue.

A message is displayed, indicating the files are being copied.



When all the modules have been copied, the installation is complete, and a confirmation message is presented.



Radia Inventory Manager has been successfully installed for Win32.

UNIX Installation

Prior to installing the Radia NNM Radia Inventory Manager Access Module, make sure that NNM is not running.

- ▶ On the computer that runs NNM, UNIX users must be logged in as a superuser. Log on as root.

Establish the environment

Before running the installation, you must run a script that establishes the required environment variables for NNM in the default installation directory. For UNIX, type:

```
/opt/OV/bin/ov.envvars.sh
```

in order to set OV_BIN.

To install the Radia Inventory Manager Access Module

- 1 Once the environment has been established, untar into any temporary directory, the `nnmrिम_install.tar` file from the Radia Adapter for HP OpenView CD-ROM.
- 2 Run the script (`install_rim.sh`) to install the Radia Inventory Manager Access Module. The process will display as follows:

```
# ./install_rim.sh
```

- 6 Enter the fully qualified name of your Internet browser. For example,

```
/opt/netscape/netscape
```

- 7 Enter the host name or IP address of your Radia Integration Server.

```
xxx.xxx.xxx.xx
```

- 8 Enter the port for the Radia Integration Server. The default port is 3466.

```
3466
```

The information you have specified will be displayed on the screen.

```
Browser: /opt/netscape/netscape
```

```
Radia Integration Server Host: xxx.xxx.xxx.xx
```

```
Radia Integration Server Port: 3466
```

Are these parameters correct? (yn):

- 9 If you are satisfied with your specifications, enter **Y** to continue the installation, wherein you will see the following messages. Any response other than **Y**, will generate a prompt to re-enter your parameters. See Step 7 below.

```
Copying files to NNM Directories...
```

```
Successful installation display:
```

```
The Radia Inventory Manager Access Module has been  
successfully loaded.
```

```
Please shutdown OpenView NNM and restart to enable these  
changes.
```

- 10 Reenter parameters? (yn):

Enter **Y** to restart the installation, returning to step 3 (above). Any response, other than **Y**, will exit the install.

Index

A

alert alarms
Novadigm, 9

D

destination directory, 17

E

environment variables script
UNIX, 8, 20
Win32, 8
Event Configuration Utility, 9

I

install_mib.bat, 8
install_mib.sh, 8

N

Network Node Manager, 7, 13
NNM, 7
NNM Console, 11
NNM/RIM
installation, 15
introduction, 13
NNM/SNMP
installation, 7
introduction, 7
Novadigm
alarm category, 7
alert alarms, 9

browser, 11
trap events, 9
Novadigm MIB, 8, 20

O

ov.envvars.bat, 8, 20
ov.envvars.sh, 8, 20

R

Radia Integration Server, 13
Radia Inventory Manager, 7, 13
Access Module
installing, 20
RIM/NNM
installation, 15
UNIX, 20
Win32, 15
introduction, 13
querying data, 13
viewing data, 14

S

SNMP, 7
SNMP/NNM
installation, 7
introduction, 7

T

trap events
Novadigm, 9

