

HP Client Automation Support for Windows Terminal Server and Citrix

For the Windows® operating system

Software Version: 8.10

User Guide

Document Release Date: February 2012

Software Release Date: February 2012



Legal Notices

Warranty

The only warranties for HP products and services are set forth in the express warranty statements accompanying such products and services. Nothing herein should be construed as constituting an additional warranty. HP shall not be liable for technical or editorial errors or omissions contained herein.

The information contained herein is subject to change without notice.

Restricted Rights Legend

Confidential computer software. Valid license from HP required for possession, use or copying. Consistent with FAR 12.211 and 12.212, Commercial Computer Software, Computer Software Documentation, and Technical Data for Commercial Items are licensed to the U.S. Government under vendor's standard commercial license.

Copyright Notice

© Copyright 2005-2007, 2011 Hewlett-Packard Development Company, L.P.

Trademark Notices

Microsoft®, Windows®, Windows® XP, and Windows Vista® are U.S. registered trademarks of Microsoft Corporation.

Acknowledgements

This product includes software developed by the Apache Software Foundation (<http://www.apache.org/>).

This product includes cryptographic software written by Eric Young (eay@cryptsoft.com).

This product includes software developed by the OpenSSL Project for use in the OpenSSL Toolkit (<http://www.openssl.org/>).

This product includes software written by Tim Hudson (tjh@cryptsoft.com).

Documentation Updates

The title page of this document contains the following identifying information:

- Software Version number, which indicates the software version.
- Document Release Date, which changes each time the document is updated.
- Software Release Date, which indicates the release date of this version of the software.

To check for recent updates or to verify that you are using the most recent edition of a document, go to:

<http://h20230.www2.hp.com/selfsolve/manuals>

This site requires that you register for an HP Passport and log on. To register for an HP Passport ID, go to:

<http://h20229.www2.hp.com/passport-registration.html>

Or click the **New users - please register** link on the HP Passport log on page.

You will also receive updated or new editions if you subscribe to the appropriate product support service. Contact your HP sales representative for details.

Support

Visit the HP Software Support Online web site at:

<http://www.hp.com/go/hpsoftwaresupport>

This web site provides contact information and details about the products, services, and support that HP Software offers.

HP Software online support provides customer self-solve capabilities. It provides a fast and efficient way to access interactive technical support tools needed to manage your business. As a valued support customer, you can benefit by using the support web site to:

- Search for knowledge documents of interest
- Submit and track support cases and enhancement requests
- Download software patches
- Manage support contracts
- Look up HP support contacts
- Review information about available services
- Enter into discussions with other software customers
- Research and register for software training

Most of the support areas require that you register as an HP Passport user and sign in. Many also require a support contract. To register for an HP Passport ID, go to:

<http://h20229.www2.hp.com/passport-registration.html>

To find more information about access levels, go to:

http://h20230.www2.hp.com/new_access_levels.jsp

Contents

User Guide.....	1
Contents.....	5
Introduction.....	6
Who this Guide is for.....	6
What this Guide is about.....	6
Support for Windows Terminal Server and Citrix.....	8
Database Additions.....	8
Publishing the Applications and Scripts.....	8
Preparing the Service.....	9
Deploying the Service.....	14
Running Exit Methods.....	14
We appreciate your feedback!.....	16

Introduction

Who this Guide is for

This book is for systems administrators who want to use HP Client Automation (HPCA) to deploy applications to Windows Terminal Servers.

Note: To use this feature, you must be running HPCA Enterprise Edition.

What this Guide is about

This guide describes:

- Classes in the HPCA Configuration Server Database (CSDB) for using this component.
- Publishing details for Terminal Server Applications.
- Deployment procedures

Windows Terminal Services is a thin-client server. With Terminal Services, the processing of one or more applications is moved completely off of a user's desktop and onto a centralized server. Only screen, mouse, and keyboard information is passed between the agent and the server.

The Terminal Services component of the HPCA Agent provides the ability to install and manage applications in a Windows Terminal Server environment for applications to be run by Windows Terminal Server agents, and for applications to be run locally on the Windows Terminal server.

As part of the application deployment process, the HPCA Agent automatically manages the Install and Execute modes in which a Windows Terminal Server can install and maintain applications. Before installing or updating an application, the HPCA Agent will query the Windows Terminal Server for active sessions, prompt users to logoff, and, if needed, disconnect user sessions. Upon completion of the installation, the Windows Terminal Server is brought back online to accept incoming user sessions.

Support for Windows Terminal Server and Citrix

Database Additions

Two classes are available to manage Windows Terminal Server applications. The two classes are:

- **WTS App Comp Scripts (WTSACS)**
Use an instance in this class to configure application compatibility scripts. For more information on this class, see the table [WTSACS Class attributes](#).
- **WTS Control (WTCTRL)**
Use instances in this class to describe some behaviors you may need for the application. For more information on this class, see the table [WTCTRL Class attributes](#).

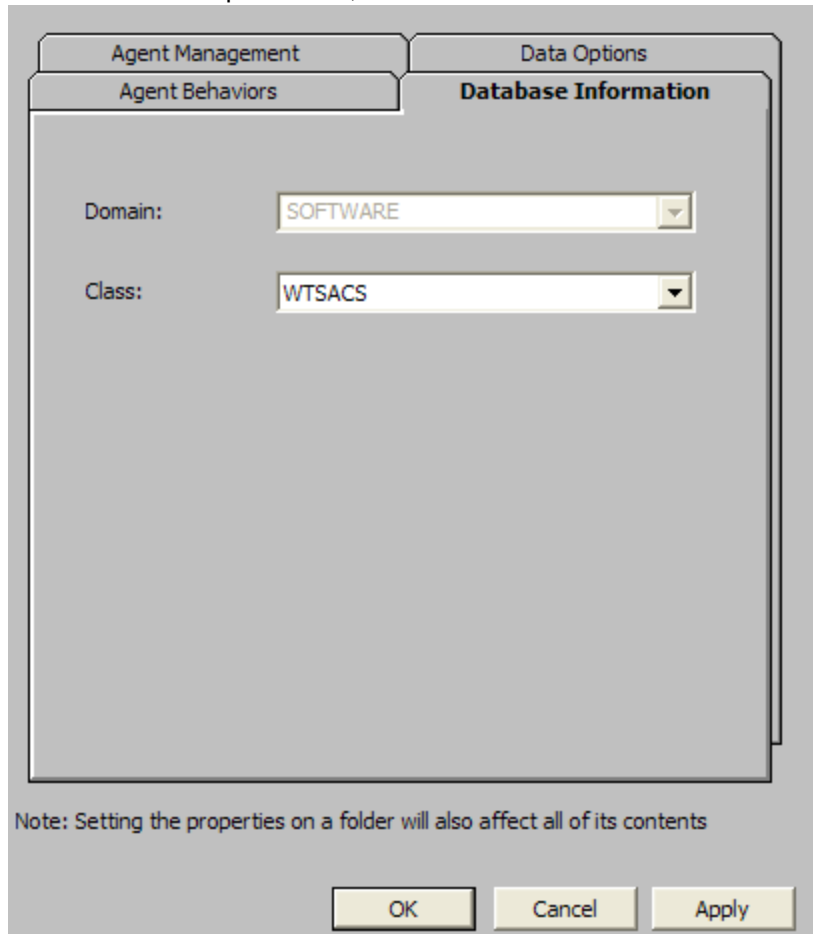
Publishing the Applications and Scripts

Windows Terminal Server and Citrix applications are usually composed of two elements: the application and the application compatibility scripts. To use the HPCA Agent to manage Windows Terminal Server and Citrix applications, you must publish both elements. First, use the HPCA Administrator Packager and Publisher to publish the application as you would any other application. Refer to the *HP Client Automation Application Manager and Application Self-Service Manager Installation and Configuration Guide* for more information on publishing applications. Then, follow the procedure below to publish and prepare the application compatibility scripts. Publish each script separately.

To publish application compatibility scripts

1. Use Component Selection Mode in the HPCA Administrator Packager to publish the application compatibility scripts (ACS) into the WTSACS Class. To do this, when you reach the Files tab, expand to the location of the ACS file. Right-click the ACS file and select **Properties**.
2. Click the **Database Information** tab.

- From the Class drop-down list, select **WTSACS**.



- Finish the packaging session, and exit HPCA Administrator Packager.
- Complete the procedure for each ACS. An instance will be created in the WTSACS Class. After the instance has been created, use the HPCA Administrator CSDB Editor to configure its attributes as shown in the next section.

Preparing the Service

After you have packaged the application and its scripts, you must now prepare the service for deployment. During this process, you will need to create a Service Group to deploy the Server Application. See the instructions in the *HP Client Automation Administrator Installation and User Guide* before beginning this procedure. To completely prepare the service, you will need to:

<input type="checkbox"/>	Configure the WTS App Comp Scripts (WTSACS) instance.
<input type="checkbox"/>	Configure the WTS Control (WTCTRL) instance.
<input type="checkbox"/>	Create a Service.
<input type="checkbox"/>	Assign the Service.

Task 1: Configuring the WTSACS Instance

Edit instances in the WTSACS Class to specify the type of application compatibility script.

To configure the WTSACS instance

1. Use the HPCA Administrator CSDB Editor to navigate to the **PRIMARY.SOFTWARE.WTSACS** instance you want to configure.
2. Right-click the instance and select **Edit Instance**.
3. Use the table [WTSACS Class attributes](#) to set the attributes for the application compatibility script. Keep in mind the following:
 - For an ACS Install script, set the TYPE to I, and ZCREATE to &(WTSACS.LOCATION) &(WTSACS.ZRSCCFIL).
 - For an ACS Uninstall script, set the TYPE to U, and BDELETE to &(WTSACS.LOCATION) &(WTSACS.ZRSCCFIL).
 - For an ACS Logon script, set the TYPE to L.
4. Click **OK** to accept the new values.
5. Click **Yes** to confirm the changes.

WTSACS Class attributes

Attribute	Description
ZRSCNAME	Resource Name Default: &ZRSCCFIL
ZRSCCFIL	Resource File Name
ZRSCVRFY	Verify Resource File on Connect Default: Y
ZRSCRASH	DOS File Attribute [R/A/S/H]
ZRSCSTYP	Server File Type [BINARY/TEXT] Default: BINARY
TYPE	Install, Logon, Uninstall [I/L/U] <ul style="list-style-type: none"> • Set to I for Install script. • Set to L for a logon script. • Set to U for an Uninstall Script.
ZRSCDATE	Resource Date Stamp – from Promote
ZRSCTIME	Resource Time Stamp – from Promote
ZRSCSIZE	Resource Size – from Promote
ZCMPSIZE	Compressed File Size
ZRSCCSTA	Client File Status Default: 999
ZRSCPRI	Create Sequence Priority

Attribute	Description
	Default: 50
ZCREATE	Method to Install Resource Set this attribute for the Install ACS to &ZRSCCFIL so this script is run at service installation.
ZDELETE	Method to De-Install Resource Set this to the method to run when the resource is deleted. Default: RADREMF
BDELETE	Method Before Delete Set this attribute for the Uninstall ACS to &ZRSCCFIL so this script is run at service removal.
NAME	Friendly name of the instance
LOCATION	Location of the application compatibility script Default : & (ZMASTER.ZLIBDRV) & (ZMASTER.ZLIBDIR)
ZSTOP000	Stop Expression Default : / (EDMGETV (ZCONFIG, WTSSRVR) = 'Y') Note: The export deck may have this configured incorrectly with a period in place of the comma. Check to be sure it is shown as above.

Task 2: Configuring the WTCTRL Instance

Use instances in the WTCTRL Class to specify if you require logoffs for application events, the type of install, and timeout settings if needed

To configure the WTCTRL instance

1. Use the HPCA Administrator CSDB Editor to navigate to the WTCTRL Class in the SOFTWARE domain.
2. Right-click **WTCTRL** and select **New Instance**.
3. Type in a display name and an instance name.
4. Click **OK**.
5. Right-click the new instance and select Edit Instance.
6. Use the table [WTCTRL Class attributes](#) to set logoff behaviors and timeouts.
7. Click **OK** to accept the new values.
8. Click **Yes** to confirm the changes.

WTSCTRL Class attributes

Attribute	Description
WTSTYPE	<p>Install/Execute Mode [I/E]</p> <ul style="list-style-type: none"> Set to E to install files natively on the Windows Terminal Server such as applications that an administrator may use specifically on the server. Set to I for an application that will be used by the Windows Terminal Server's clients. <p>Default: E</p>
LI	<p>Logoff for Install [Y/N]</p> <p>Specify Y to logoff for application installation.</p> <p>Default: N</p>
LU	<p>Logoff for Update [Y/N]</p> <p>Specify Y to logoff for application update.</p> <p>Default: Y</p>
LR	<p>Logoff for Repair [Y/N]</p> <p>Specify Y to logoff for application repair.</p> <p>Default: Y</p>
LD	<p>Logoff for Delete [Y/N]</p> <p>Specify Y to logoff for application removal.</p> <p>Default: Y</p>
TO	<p>Disconnect Time Out (minutes)</p> <p>Specify in minutes how long the Windows Terminal Server should wait before disconnecting any users from the server. A warning message will appear on the Windows Terminal Server showing how long before the logoff will occur.</p> <p>Default: 15</p>
RW	<p>Rewarn of Logoff at (minutes)</p> <p>Specify when you want a second warning to appear that the Server will be logged off.</p> <p>Default: 2</p>
NAME	<p>Friendly Name</p>
WTSOPTNS	<p>WTS Logoff Settings. Do not modify.</p> <p>Composite concatenated logoff field to flow down to the client.</p> <p>Default: LI=&(LI), LU=&(LU), LR=&(LR), LD=&(LD), TO=&(TO), RW=&(RW)</p>

After publishing the script and defining any special behaviors, you are ready to create the service.

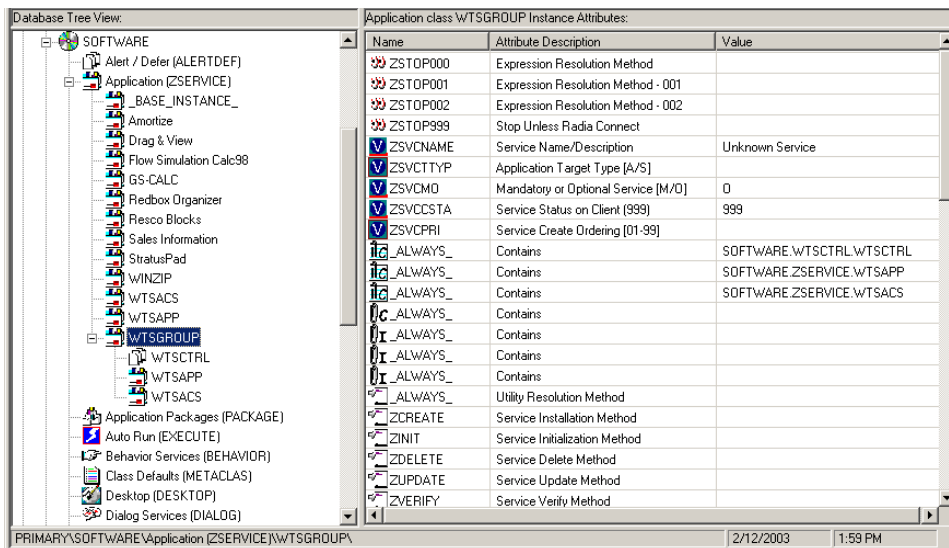
Task 3: Creating the Service

After configuring the WTSACS and WTCTRL instances, you need to create services for the WTSACS instance and the original application package. Then, the two services and the WTCTRL instance will become part of a Service Group. Refer to the *Service Groups* section in the *HP Client Automation Administrator Installation and User Guide* before completing this procedure.

To create a service for the Windows Terminal or Citrix Server

1. Create a Service Group for the application using the HPCA Administrator CSDB Editor.
2. Set the ZSVCGRP attribute on the Service Group to D for dependent. Refer to the *HP Client Automation Administrator Installation and User Guide* for information about adding this variable and using Service Groups.
3. Create Application (ZSERVICE) instances for the application and the WTSACS instance.
4. Connect the WTCTRL instance and the services created in Step 3 of this procedure to the Service Group instance in the following order:
 - WTCTRL instance
 - Main application Service
 - WTSACS Service

In the example shown below, a Service Group called WTSGROUP is created. Next, the WTCTRL instance, and the services for WTSAPP and WTSACS, are connected in that order.



Note: The services in a Service Group will install in “visual order”. This means, from the top downward as connected to the Service Group. Services in a Service Group do not honor the settings in ZSVCPRI.

Task 4: Entitle the Service

For details on how to entitle services to users and groups, see the *Connecting Services to Groups* section in the *HP Client Automation Administrator Installation and User Guide*.

Deploying the Service

RADSVMAN . EXE is the module responsible for managing Server Applications. RADSVMAN completes the following tasks:

1. Changes the Windows Terminal Server to Execute mode.
2. Downloads necessary data.
3. Installs sever applications. These applications have the WTSTYPE attribute of the WTCTRL instance set to E.
4. Changes the Windows Terminal Server to Install mode.
5. Installs agent applications. These applications have the WTSTYPE attribute of the WTCTRL instance set to I.
6. Switches back to Execute mode.

Run RADSVMAN through a Scheduling (TIMER) instance or from the command line on the Windows Terminal Server. In the example below, the applications are assigned to a user based on the computer name.

```
radsvman ip=<IP_ address>, uid=$MACHINE
```

RADSVMAN accepts the same parameters as RADSKMAN. For more information on RADSKMAN, see the *HP Client Automation Application Manager and Application Self-Service Manager Installation and Configuration Guide*.

Running Exit Methods

You may need to run a method either before or after installing applications. Use SVRBEXIT (Before Exit Point method) to specify a method to run before installing applications, and use SVRAEXIT (After Exit Point method) to specify a method to run *after* installing applications. These attributes must be present in the RADSETUP agent object to run. You can add them in any of the following ways:

- Add the variables before installation in the install.ini.
- Use the HPCA Administrator Agent Explorer to manually add them to the RADSETUP object on the agent computer.
- If you are using Client Operation Profiles, add SVRBEXIT and SVRAEXIT as variables to the CLIENT.SETTINGS Class.

We appreciate your feedback!

If an email client is configured on this system, by default an email window opens when you click [here](#).

If no email client is available, copy the information below to a new message in a web mail client, and then send this message to docfeedback@hp.com.

Product name and version: HP Client Automation Support for Windows Terminal Server and Citrix, 8.10

Document title: User Guide

Feedback:

User Guide

We appreciate your feedback!
