

HP IT Executive Scorecard

For the Windows® operating system

Software Version: 9.00 MLU SW Media

Universe ERDs Guide

Document Release Date: November 2011

Software Release Date: November 2011



Legal Notices

Warranty

The only warranties for HP products and services are set forth in the express warranty statements accompanying such products and services. Nothing herein should be construed as constituting an additional warranty. HP shall not be liable for technical or editorial errors or omissions contained herein.

The information contained herein is subject to change without notice.

Restricted Rights Legend

Confidential computer software. Valid license from HP required for possession, use or copying. Consistent with FAR 12.211 and 12.212, Commercial Computer Software, Computer Software Documentation, and Technical Data for Commercial Items are licensed to the U.S. Government under vendor's standard commercial license.

Copyright Notice

© Copyright 2007 - 2011 Hewlett-Packard Development Company, L.P.

Trademark Notices

- Adobe® and Acrobat® are trademarks of Adobe Systems Incorporated.
- AMD and the AMD Arrow symbol are trademarks of Advanced Micro Devices, Inc.
- Intel®, Itanium®, Pentium®, and Intel® Xeon® are trademarks of Intel Corporation in the U.S. and other countries.
- Java is a registered trademark of Oracle and/or its affiliates.
- Microsoft®, Windows®, Windows NT®, Windows® XP, Windows Vista® and SQL Server® are U.S. registered trademarks of Microsoft Corporation.
- Oracle is a registered trademark of Oracle Corporation and/or its affiliates.

Documentation Updates

The title page of this document contains the following identifying information:

- Software Version number, which indicates the software version.
- Document Release Date, which changes each time the document is updated.
- Software Release Date, which indicates the release date of this version of the software.

To check for recent updates or to verify that you are using the most recent edition of a document, go to:

<http://h20230.www2.hp.com/selfsolve/manuals>

This site requires that you register for an HP Passport and sign in. To register for an HP Passport ID, go to:

<http://h20229.www2.hp.com/passport-registration.html>

Or click the **New users - please register** link on the HP Passport login page.

You will also receive updated or new editions if you subscribe to the appropriate product support service. Contact your HP sales representative for details.

Support

Visit the HP Software Support Online web site at:

<http://www.hp.com/go/hpsoftwaresupport>

This web site provides contact information and details about the products, services, and support that HP Software offers.

HP Software online support provides customer self-solve capabilities. It provides a fast and efficient way to access interactive technical support tools needed to manage your business. As a valued support customer, you can benefit by using the support web site to:

- Search for knowledge documents of interest
- Submit and track support cases and enhancement requests
- Download software patches
- Manage support contracts
- Look up HP support contacts
- Review information about available services
- Enter into discussions with other software customers
- Research and register for software training

Most of the support areas require that you register as an HP Passport user and sign in. Many also require a support contract. To register for an HP Passport ID, go to:

<http://h20229.www2.hp.com/passport-registration.html>

To find more information about access levels, go to:

http://h20230.www2.hp.com/new_access_levels.jsp

Disclaimer for PDF Version of Online Help

This document is a PDF version of the online help. This PDF file is provided so you can easily print multiple topics from the help information or read the online help in PDF format.

Note: Some topics do not convert properly to PDF, causing format problems. Some elements of online help are completely removed from the PDF version. Those problem topics can be successfully printed from within the online help.

Contents

Universe ERDs Guide	1
Contents	6
Learn About the SAP BusinessObjects Enterprise for IT Executive Scorecard Universe.....	8
Reference: Universes (Contexts).....	8
Availability Management Universe.....	10
Universe Parameters.....	10
ALM Universes.....	13
ALM Defect Universe.....	14
Universe Parameters.....	14
ALM Requirement Universe.....	19
Universe Parameters.....	19
ALM Test Universe.....	24
Universe Parameters.....	25
Asset Management Universe.....	29
Universe Parameters.....	29
Change Management Universe.....	36
Universe Parameters.....	36
Financial Management Universe.....	40
Universe Parameters.....	40
Incident Management Universe.....	45
Universe Parameters.....	45
Project Portfolio Management (PPM) Universe.....	50
Universe Parameters.....	50
Service Desk Management Universe.....	56
Universe Parameters.....	56
Service Level Management Universe.....	61
Universe Parameters.....	61
Request Management Universe.....	65

Universe Parameters.....	65
--------------------------	----

Learn About the SAP BusinessObjects Enterprise for IT Executive Scorecard Universe

A SAP BusinessObjects Enterprise for IT Executive Scorecard Universe represents a business universe.

A universe or context is a set of entities. Each entity is a set of fields. Each field can be a dimension, measure, or fact. It can be measured.

A formula calculates, for a specified time period, using the values of specific entities, a value that represents a specific aspect of the business. The value is given to a Key Performance Indicator (KPI). The KPI represents the specific aspect of the business.

Each universe includes a number of KPIs. The KPIs are the building blocks of the Studio and the KPI engine.

The universe entity relationship diagrams (ERDs) are logical views of the universe data models. The ERDs are interactive and contain details about the tables and classes used in the universe.

This section includes the following topics:

Reference: Universes (Contexts)

HP IT Executive Scorecards includes out-of-the-box universes (contexts) that correspond to specific aspects of the business. The entities in these contexts are IT Data Model-compliant. For details about IT Data Model, see [IT Data Model](#) in *IT Executive Scorecard Admin Guide*.

This section includes the following topics:

Availability Management Universe	10
Universe Parameters.....	10
ALM Universes	13
ALM Defect Universe.....	14
ALM Requirement Universe.....	19
ALM Test Universe.....	24
Asset Management Universe	29
Universe Parameters.....	29
Change Management Universe	36
Universe Parameters.....	36
Financial Management Universe	40
Universe Parameters.....	40
Incident Management Universe	45
Universe Parameters.....	45
Project Portfolio Management (PPM) Universe	50

Universe Parameters.....	50
Service Desk Management Universe.....	56
Universe Parameters.....	56
Service Level Management Universe.....	61
Universe Parameters.....	61
Request Management Universe.....	65
Universe Parameters.....	65

Availability Management Universe

The goal of an Availability Management universe is to allow organizations to sustain the IT service-availability to support the business at a justifiable cost.

HP Business Service Management is the data source used by this universe.

The following universe contains the attributes and classes that pertain to Availability Management.



Universe Parameters

Definition:

Name: AvailabilityManagement

Description:

Connection: XS_DWH_JDBC

Statistics:

- 5 Classes
- 38 Objects
- 5 Tables
- 0 Aliases
- 4 Joins
- 0 Contexts
- 0 Hierarchies
- 0 Conditions

Strategies:

Join strategy: Edit Manually (none)

Table strategy: (Built-in) Standard

Object strategy: (Built-in) Standard Renaming

Controls:

Limit size of result set to: 5000 rows

Limit size of long text objects to: 1000 characters

Limit execution time to: 10 minutes

Warn if cost estimate exceeds: unchecked

SQL parameters:

Query

Allow use of subqueries: yes

Allow use of union, intersect and minus operators: yes

Allow complex conditions in Query Panel: yes

Cartesian products: warn

Multiple paths

Generate several SQL statements for each context: yes

Generate several SQL statements for each measure: yes

Allow selection of multiple contexts: no

Links: No links for this universe.

Hierarchies List

- KpiName
- Status
- Service
- Period

Hierarchies

KpiName

KpiName/Name

Status

- Status/Name
- Status/Code

Service

- Service/Name
- Service/DisplayLabel
- Service/BusinessCriticality
- Service/State
- Service/Type
- Service/Level0
- Service/Level1
- Service/Level2
- Service/Level3
- Service/Level4
- Service/Level5
- Service/Level6
- Service/Level7
- Service/Level8

- Service/Level9

Period

- Period/Name
- Period/DisplayLabel
- Period/StartDate
- Period/EndDate
- Period/Periodicity
- Period/PeriodNumber
- Period/FinancialUsage
- Period/YearNumber
- Period/Year
- Period/Quarter
- Period/Month
- Period/Week
- Period/Day

ALM Universes

HP Application Lifecycle Management (ALM) empowers IT to manage the core application lifecycle, from requirements through deployment, granting application teams the crucial visibility and collaboration needed for predictable, repeatable, and adaptable delivery of modern applications. ALM supports you through all phases of the application lifecycle management. By integrating the tasks involved in application management, it enables you to better align IT with your business needs.

ALM is the data source used by the Application Lifecycle Management universe.

The following topics describe the ALM universes:

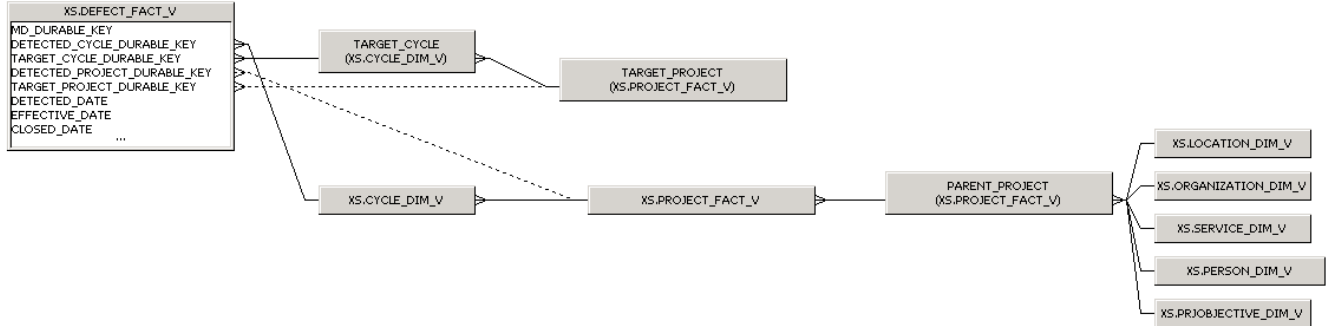
["ALM Defect Universe"](#)

["ALM Requirement Universe"](#)

["ALM Test Universe"](#)

ALM Defect Universe

The following universe contains the attributes and classes that pertain to monitoring defects in ALM.



Universe Parameters

Name: ALM_Defect

Description:

Connection: XS_DWH_JDBC

Statistics:

- 10 Classes
- 130 Objects
- 8 Tables
- 3 Aliases
- 12 Joins
- 0 Contexts
- 0 Hierarchies
- 0 Conditions

Strategies:

Join strategy: Edit Manually (none)

Table strategy: (Built-in) Standard

Object strategy: (Built-in) Standard Renaming

Controls:

Limit size of result set to: 5000 rows

Limit size of long text objects to: 1000 characters

Limit execution time to: 10 minutes

Warn if cost estimate exceeds: unchecked

SQL parameters:

Query

Allow use of subqueries: yes

Allow use of union, intersect and minus operators: yes

Allow complex conditions in Query Panel: yes

Cartesian products: warn

Multiple paths

Generate several SQL statements for each context: yes

Generate several SQL statements for each measure: yes

Allow selection of multiple contexts: no

Links: No links for this universe.

Hierarchies List:

Defect

Cycle

TargetCycle

Project

TargetProject

ProjectObjective

Location

Service

Person

Organization

Hierarchies:

Defect

- Defect/Status
- Defect/PrevStatus
- Defect/Severity
- Defect/PrevSeverity
- Defect/Priority
- Defect/DetectedDate
- Defect/ClosedDate
- Defect/ProjectGroup
- Defect/DefectSummary
- Defect/EstimatedFixTime
- Defect/ActualFixTime
- Defect/ReopenCount
- Defect/IsReproducible

Cycle

- Cycle/Name
- Cycle/ProjectGroup
- Cycle/StartDate
- Cycle/EndDate

TargetCycle

- TargetCycle/Name
- TargetCycle/ProjectGroup
- TargetCycle/StartDate
- TargetCycle/EndDate

Project

- Project/Name
- Project/Description
- Project/Class
- Project/ProjectGroup
- Project/RiskRating
- Project/Status
- Project/HasObjectiveIndicator
- Project/ActiveIndicator
- Project/OnTimeIndicator
- Project/InControlIndicator
- Project/FlagActive
- Project/HealthIndicator
- Project/FlagCompleted
- Project/ApprovalDate
- Project/WorkPlanCreatedDate
- Project/RolloutDate
- Project/InitiationDate
- Project/PlannedEndDate
- Project/PlannedStartDate
- Project/EndDate
- Project/StartDate
- Project/Level1
- Project/Level0
- Project/Level3
- Project/Level2
- Project/Level5
- Project/Level4
- Project/Level7
- Project/Level6
- Project/Level9
- Project/Level8

TargetProject

- TargetProject/Name
- TargetProject/Description
- TargetProject/Class
- TargetProject/ProjectGroup
- TargetProject/Status
- TargetProject/RiskRating
- TargetProject/ActiveIndicator
- TargetProject/HasObjectiveIndicator
- TargetProject/InControlIndicator
- TargetProject/OnTimeIndicator
- TargetProject/HealthIndicator
- TargetProject/FlagActive
- TargetProject/FlagCompleted
- TargetProject/WorkPlanCreatedDate
- TargetProject/ApprovalDate
- TargetProject/InitiationDate
- TargetProject/RolloutDate
- TargetProject/PlannedStartDate
- TargetProject/StartDate
- TargetProject/PlannedEndDate
- TargetProject/Level0
- TargetProject/EndDate
- TargetProject/Level2
- TargetProject/Level1
- TargetProject/Level4
- TargetProject/Level3
- TargetProject/Level6
- TargetProject/Level5
- TargetProject/Level8
- TargetProject/Level7
- TargetProject/Level9

ProjectObjective

- ProjectObjective/Name
- ProjectObjective/Priority
- ProjectObjective/State

Location

- Location/Name
- Location/Type
- Location/CountryOrArea
- Location/Region
- Location/Locality
- Location/PostalCode

Service

- Service/Name
- Service/Description
- Service/DisplayLabel
- Service/BusinessCriticality
- Service/State
- Service/Type
- Service/Level0
- Service/Level1
- Service/Level2
- Service/Level3
- Service/Level4
- Service/Level5
- Service/Level6
- Service/Level7
- Service/Level8
- Service/Level9

Person

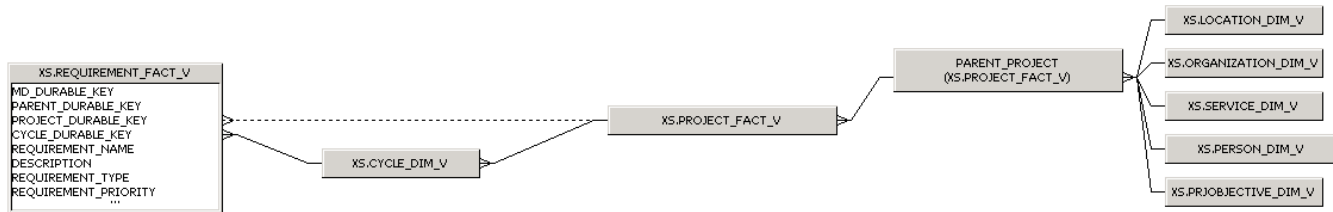
- Person/Name
- Person/Level0
- Person/Level1
- Person/Level2
- Person/Level4
- Person/Level3
- Person/Level6
- Person/Level5
- Person/Level8
- Person/Level7
- Person/Level9

Organization

- Organization/Name
- Organization/Level0
- Organization/Level1
- Organization/Level2
- Organization/Level3
- Organization/Level4
- Organization/Level5
- Organization/Level6
- Organization/Level7
- Organization/Level8
- Organization/Level9

ALM Requirement Universe

The following universe contains the attributes and classes that pertain to monitoring requirements in ALM.



Universe Parameters

Definition

Name: ALM_Requirement

Description:

Connection: XS_DWH_JDBC

Statistics:

- 8 Classes
- 106 Objects
- 8 Tables
- 1 Aliases
- 9 Joins
- 0 Contexts
- 0 Hierarchies
- 0 Conditions

Strategies:

Join strategy: Edit Manually (none)

Table strategy: (Built-in) Standard

Object strategy: (Built-in) Standard Renaming

Controls:

Limit size of result set to: 5000 rows

Limit size of long text objects to: 1000 characters

Limit execution time to: 10 minutes

Warn if cost estimate exceeds: unchecked

SQL parameters:

Query

Allow use of subqueries: yes

Allow use of union, intersect and minus operators: yes

Allow complex conditions in Query Panel: yes

Cartesian products: warn

Multiple paths

Generate several SQL statements for each context: yes

Generate several SQL statements for each measure: yes

Allow selection of multiple contexts: no

Links: No links for this universe.

Hierarchies List

- Requirement
- Cycle
- Project
- ProjectObjective
- Location
- Service
- Person
- Organization

Hierarchies

Requirement

- Requirement/Name
- Requirement/Description
- Requirement/Type
- Requirement/Priority
- Requirement/ProjectGroup
- Requirement/CreateDate
- Requirement/ReviewDate
- Requirement/ReviewStatus
- Requirement/PrevReviewStatus
- Requirement/CoverageStatus
- Requirement/PrevCoverageStatus
- Requirement/DocumentationWordCount
- Requirement/LinkedDefectsIndicator
- Requirement/HasAttachmentIndicator
- Requirement/Level0
- Requirement/Level1
- Requirement/Level2
- Requirement/Level3
- Requirement/Level4

- Requirement/Level5
- Requirement/Level6
- Requirement/Level7
- Requirement/Level8
- Requirement/Level9

Cycle

- Cycle/Name
- Cycle/ProjectGroup
- Cycle/StartDate
- Cycle/EndDate

Project

- Project/Name
- Project/Description
- Project/Class
- Project/ProjectGroup
- Project/Status
- Project/RiskRating
- Project/ActiveIndicator
- Project/HasObjectiveIndicator
- Project/InControlIndicator
- Project/OnTimeIndicator
- Project/HealthIndicator
- Project/FlagActive
- Project/FlagCompleted
- Project/WorkPlanCreatedDate
- Project/ApprovalDate
- Project/InitiationDate
- Project/RolloutDate
- Project/PlannedStartDate
- Project/PlannedEndDate
- Project/StartDate
- Project/EndDate
- Project/Level0
- Project/Level1
- Project/Level2
- Project/Level3
- Project/Level4
- Project/Level5
- Project/Level6
- Project/Level7
- Project/Level8
- Project/Level9

ProjectObjective

- ProjectObjective/Name
- ProjectObjective/Priority
- ProjectObjective/State

Location

- Location/Name
- Location/Type
- Location/CountryOrArea
- Location/Region
- Location/Locality
- Location/PostalCode

Service

- Service/Name
- Service/Description
- Service/DisplayLabel
- Service/BusinessCriticality
- Service/State
- Service/Type
- Service/Level0
- Service/Level1
- Service/Level2
- Service/Level3
- Service/Level4
- Service/Level5
- Service/Level6
- Service/Level7
- Service/Level8
- Service/Level9

Person

- Person/Name
- Person/Level0
- Person/Level1
- Person/Level2
- Person/Level3
- Person/Level4
- Person/Level5
- Person/Level6
- Person/Level7
- Person/Level8
- Person/Level9

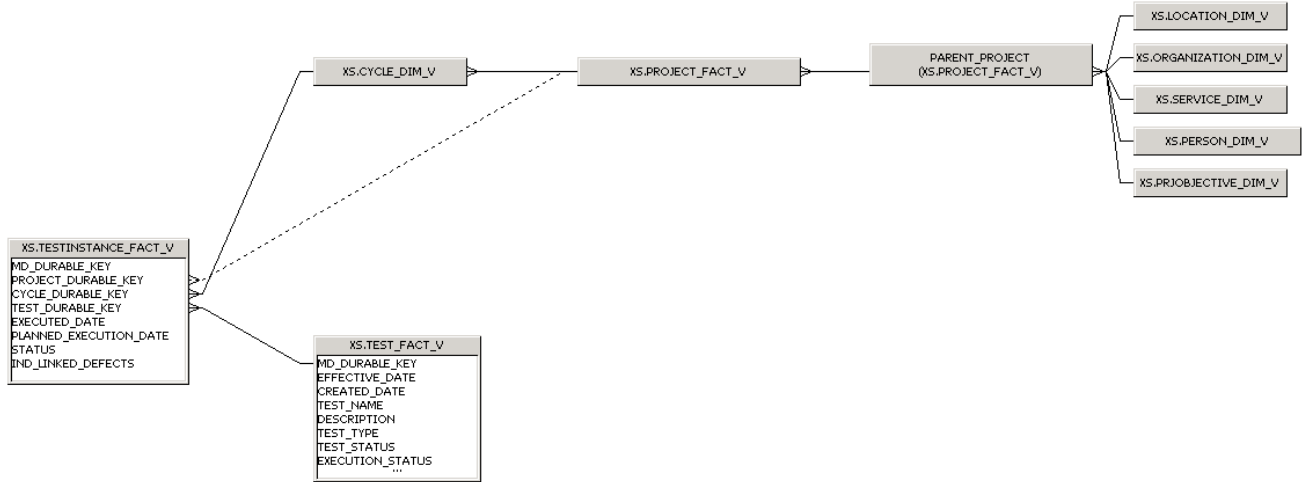
Organization

- Organization/Name
- Organization/Level0

- Organization/Level1
- Organization/Level2
- Organization/Level3
- Organization/Level4
- Organization/Level5
- Organization/Level6
- Organization/Level7
- Organization/Level8
- Organization/Level9

ALM Test Universe

The following universe contains the attributes and classes that pertain to monitoring tests in ALM.



Universe Parameters

Definition:

Name: ALM_Test

Description:

Connection: XS_DWH_JDBC

Statistics:

- 9 Classes
- 97 Objects
- 9 Tables
- 1 Aliases
- 10 Joins
- 0 Contexts
- 0 Hierarchies
- 0 Conditions

Strategies:

Join strategy: Edit Manually (none)

Table strategy: (Built-in) Standard

Object strategy: (Built-in) Standard Renaming

Controls:

Limit size of result set to: 5000 rows

Limit size of long text objects to: 1000 characters

Limit execution time to: 10 minutes

Warn if cost estimate exceeds: unchecked

SQL parameters:

Query

Allow use of subqueries: yes

Allow use of union, intersect and minus operators: yes

Allow complex conditions in Query Panel: yes

Cartesian products: warn

Multiple paths

Generate several SQL statements for each context: yes

Generate several SQL statements for each measure: yes

Allow selection of multiple contexts: no

Links: No links for this universe.

Hierarchies List

- Test
- TestInstance
- Cycle
- Project
- ProjectObjective
- Location
- Service
- Person
- Organization

Hierarchies

Test

- Test/Name
- Test/Type
- Test/Description
- Test/CreatedDate
- Test/Status
- Test/PrevStatus
- Test/ExecutionStatus
- Test/PrevExecutionStatus
- Test/ProjectGroup
- Test/LinkedDefectsIndicator
- Test/LinkedReqIndicator
- TestInstance
- TestInstance/Status
- TestInstance/ExecutionDate
- TestInstance/PlannedExecutionDate
- TestInstance/LinkedDefectsIndicator

Cycle

- Cycle/Name
- Cycle/ProjectGroup
- Cycle/StartDate
- Cycle/EndDate

Project

- Project/Name
- Project/Description
- Project/Class
- Project/ProjectGroup
- Project/Status
- Project/RiskRating
- Project/ActiveIndicator
- Project/HasObjectiveIndicator
- Project/InControlIndicator

- Project/OnTimeIndicator
- Project/HealthIndicator
- Project/FlagActive
- Project/FlagCompleted
- Project/WorkPlanCreatedDate
- Project/ApprovalDate
- Project/InitiationDate
- Project/RolloutDate
- Project/PlannedStartDate
- Project/PlannedEndDate
- Project/StartDate
- Project/EndDate
- Project/Level0
- Project/Level1
- Project/Level2
- Project/Level3
- Project/Level4
- Project/Level5
- Project/Level6
- Project/Level7
- Project/Level8
- Project/Level9
- ProjectObjective
- ProjectObjective/Name
- ProjectObjective/Priority
- ProjectObjective/State

Location

- Location/Name
- Location/Type
- Location/CountryOrArea
- Location/Region
- Location/Locality
- Location/PostalCode

Service

- Service/Name
- Service/Description
- Service/DisplayLabel
- Service/BusinessCriticality
- Service/State
- Service/Type
- Service/Level0
- Service/Level1
- Service/Level2

- Service/Level3
- Service/Level4
- Service/Level5
- Service/Level6
- Service/Level7
- Service/Level8
- Service/Level9

Person

- Person/Name
- Person/Level0
- Person/Level1
- Person/Level2
- Person/Level3
- Person/Level4
- Person/Level5
- Person/Level6
- Person/Level7
- Person/Level8
- Person/Level9

Organization

- Organization/Name
- Organization/Level0
- Organization/Level1
- Organization/Level2
- Organization/Level3
- Organization/Level4
- Organization/Level5
- Organization/Level6
- Organization/Level7
- Organization/Level8
- Organization/Level9

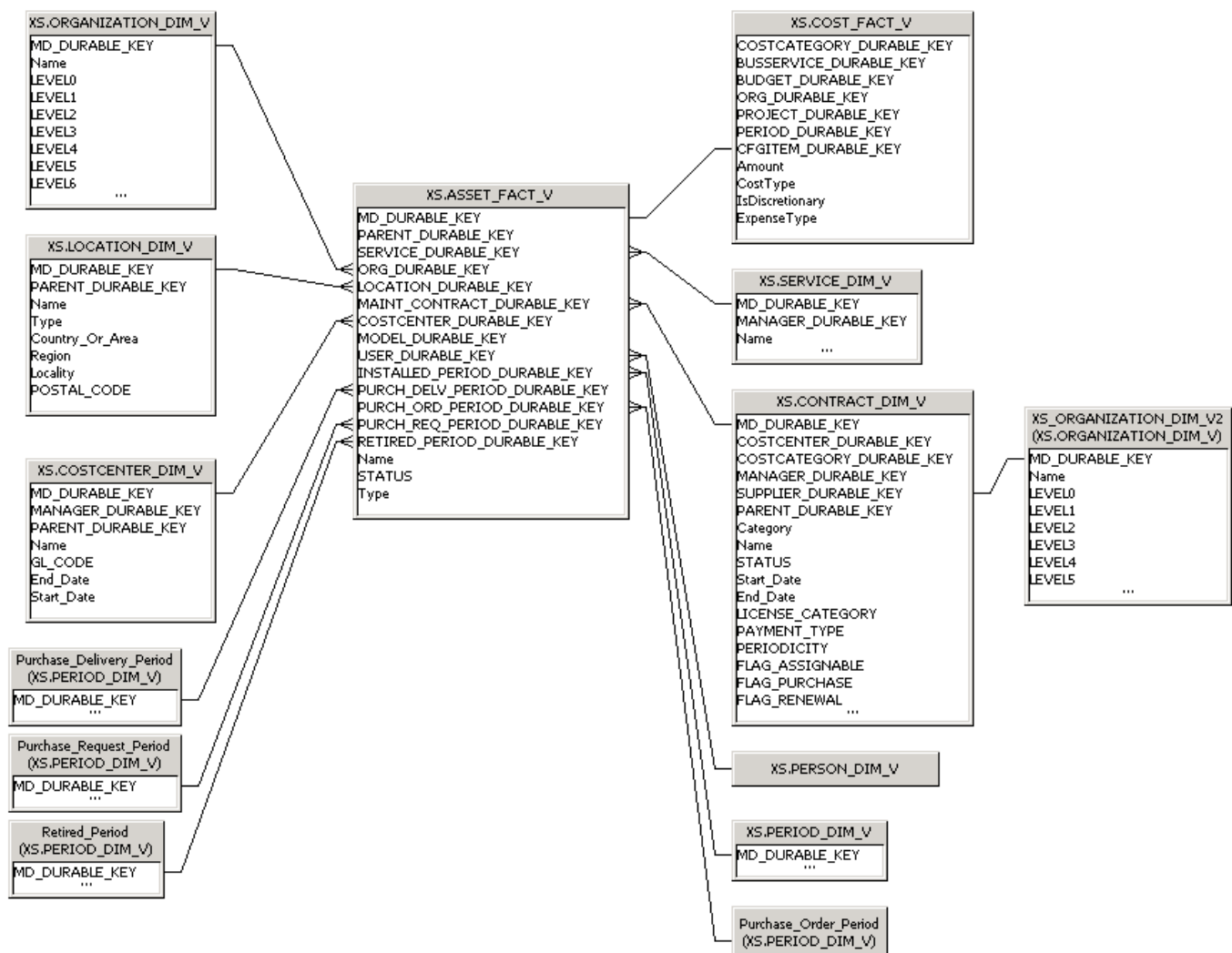
Asset Management Universe

IT Asset Management includes the Software Asset Management and the Hardware Asset Management.

Software Asset Management is the practice of integrating people, processes and technology to allow software licenses and usage to be systematically tracked, evaluated and managed. Its goal is to reduce IT expenditures, human resource overhead and risks inherent in owning and managing software assets.

The goal of Hardware Asset Management is to maintain effective hardware inventory controls that are critical to efforts to control software. This means overseeing software and hardware that comprise an organization's computers and network.

The following universe contains the attributes and classes that pertain to Asset Management.



Universe Parameters

Definition

Name: AssetManagement

Description:

Connection: XS_DWH_JDBC

Statistics:

- 16 Classes
- 161 Objects
- 11 Tables
- 5 Aliases
- 15 Joins
- 0 Contexts
- 0 Hierarchies
- 0 Conditions

Strategies:

Join strategy: Edit Manually (none)

Table strategy: (Built-in) Standard

Object strategy: (Built-in) Standard Renaming

Controls:

Limit size of result set to: 5000 rows

Limit size of long text objects to: 1000 characters

Limit execution time to: 10 minutes

Warn if cost estimate exceeds: unchecked

SQL parameters:**Query**

Allow use of subqueries: yes

Allow use of union, intersect and minus operators: yes

Allow complex conditions in Query Panel: yes

Cartesian products: warn

Multiple paths

Generate several SQL statements for each context: yes

Generate several SQL statements for each measure: yes

Allow selection of multiple contexts: no

Links: No links for this universe.

Hierarchies List

- Asset
- Cost
- CostCenter
- Contract
- Service

- Person
- Organization
- Location
- InstalledPeriod
- RetiredPeriod
- PurchaseRequestPeriod
- PurchaseOrderPeriod
- PurchaseDeliveryPeriod
- SupplierOrganization
- Model
- CostCategory

Hierarchies

Asset

- Asset/Type
- Asset/Name
- Asset/Status

Cost

- Cost/CostType
- Cost/IsDiscretionary
- Cost/ExpenseType
- CostCenter
- CostCenter/Name
- CostCenter/GICode
- CostCenter/StartDate
- CostCenter/EndDate

Contract

- Contract/Name
- Contract/Category
- Contract/Status
- Contract/LicenseCategory
- Contract/PaymentType
- Contract/Periodicity
- Contract/FlagAssignable
- Contract/FlagPurchase
- Contract/FlagRenewal
- Contract/FlagReturn
- Contract/FlagUpgrade
- Contract/PurchaseOptionType
- Contract/RenewalOptionType
- Contract/ReturnOptionType
- Contract/UpgradeOptionType

Service

- Service/Name
- Service/DisplayLabel
- Service/BusinessCriticality
- Service/State
- Service/Type
- Service/Level0
- Service/Level1
- Service/Level2
- Service/Level3
- Service/Level4
- Service/Level5
- Service/Level6
- Service/Level7
- Service/Level8
- Service/Level9

Person

- Person/Name
- Person/Level0
- Person/Level1
- Person/Level2
- Person/Level3
- Person/Level4
- Person/Level5
- Person/Level6
- Person/Level7
- Person/Level8
- Person/Level9

Organization

- Organization/Name
- Organization/Level0
- Organization/Level1
- Organization/Level2
- Organization/Level3
- Organization/Level4
- Organization/Level5
- Organization/Level6
- Organization/Level7
- Organization/Level8
- Organization/Level9

Location

- Location/Name
- Location/LocationType
- Location/CountryOrArea

- Location/Region
- Location/Locality
- Location/PostalCode

InstalledPeriod

- InstalledPeriod/Name
- InstalledPeriod/DisplayLabel
- InstalledPeriod/StartDate
- InstalledPeriod/EndDate
- InstalledPeriod/Periodicity
- InstalledPeriod/PeriodNumber
- InstalledPeriod/FinancialUsage
- InstalledPeriod/YearNumber
- InstalledPeriod/Year
- InstalledPeriod/Quarter
- InstalledPeriod/Month
- InstalledPeriod/Week
- InstalledPeriod/Day

RetiredPeriod

- RetiredPeriod/Name
- RetiredPeriod/DisplayLabel
- RetiredPeriod/StartDate
- RetiredPeriod/EndDate
- RetiredPeriod/Periodicity
- RetiredPeriod/PeriodNumber
- RetiredPeriod/FinancialUsage
- RetiredPeriod/YearNumber
- RetiredPeriod/Year
- RetiredPeriod/Quarter
- RetiredPeriod/Month
- RetiredPeriod/Week
- RetiredPeriod/Day

PurchaseRequestPeriod

- PurchaseRequestPeriod/Name
- PurchaseRequestPeriod/DisplayLabel
- PurchaseRequestPeriod/StartDate
- PurchaseRequestPeriod/EndDate
- PurchaseRequestPeriod/Periodicity
- PurchaseRequestPeriod/PeriodNumber
- PurchaseRequestPeriod/FinancialUsage
- PurchaseRequestPeriod/YearNumber
- PurchaseRequestPeriod/Year
- PurchaseRequestPeriod/Quarter
- PurchaseRequestPeriod/Month

- PurchaseRequestPeriod/Week
- PurchaseRequestPeriod/Day

PurchaseOrderPeriod

- PurchaseOrderPeriod/Name
- PurchaseOrderPeriod/DisplayLabel
- PurchaseOrderPeriod/StartDate
- PurchaseOrderPeriod/EndDate
- PurchaseOrderPeriod/Periodicity
- PurchaseOrderPeriod/PeriodNumber
- PurchaseOrderPeriod/FinancialUsage
- PurchaseOrderPeriod/YearNumber
- PurchaseOrderPeriod/Year
- PurchaseOrderPeriod/Quarter
- PurchaseOrderPeriod/Month
- PurchaseOrderPeriod/Week
- PurchaseOrderPeriod/Day

PurchaseDeliveryPeriod

- PurchaseDeliveryPeriod/Name
- PurchaseDeliveryPeriod/DisplayLabel
- PurchaseDeliveryPeriod/StartDate
- PurchaseDeliveryPeriod/EndDate
- PurchaseDeliveryPeriod/Periodicity
- PurchaseDeliveryPeriod/PeriodNumber
- PurchaseDeliveryPeriod/FinancialUsage
- PurchaseDeliveryPeriod/YearNumber
- PurchaseDeliveryPeriod/Year
- PurchaseDeliveryPeriod/Quarter
- PurchaseDeliveryPeriod/Month
- PurchaseDeliveryPeriod/Week
- PurchaseDeliveryPeriod/Day

SupplierOrganization

- SupplierOrganization/Name
- SupplierOrganization/Level0
- SupplierOrganization/Level1
- SupplierOrganization/Level2
- SupplierOrganization/Level3
- SupplierOrganization/Level4
- SupplierOrganization/Level5
- SupplierOrganization/Level6
- SupplierOrganization/Level7
- SupplierOrganization/Level8
- SupplierOrganization/Level9

Model

- Model/Name
- Model/OS
- Model/Memory
- Model/Processor

CostCategory

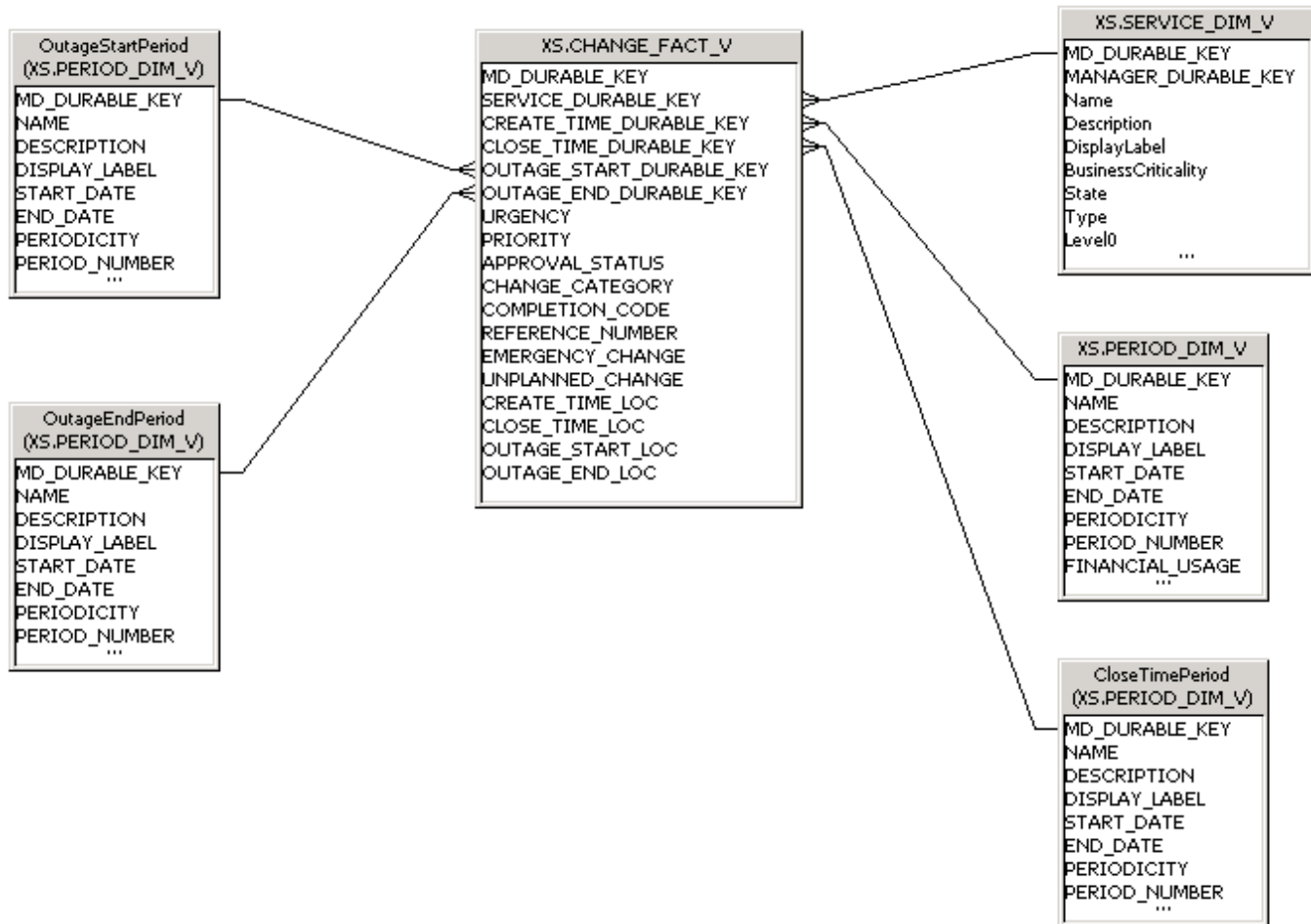
- CostCategory/Name
- CostCategory/Code

Change Management Universe

Change Management aims to ensure that standardized methods and procedures are used for efficient handling of all changes with a minimal disruption of services, a reduction in back-out activities, and the economic utilization of resources involved in the change.

HP Service Manager is the data source used by this universe.

The following universe contains the attributes and classes that pertain to Change Management.



Universe Parameters

Definition

Name: ChangeManagement

Description:

Connection: XS_DWH_JDBC

Statistics:

- 6 Classes
- 84 Objects
- 3 Tables
- 3 Aliases
- 5 Joins
- 0 Contexts
- 0 Hierarchies
- 0 Conditions

Strategies:

Join strategy: Edit Manually (none)

Table strategy: (Built-in) Standard

Object strategy: (Built-in) Standard Renaming

Controls:

Limit size of result set to: 5000 rows

Limit size of long text objects to: 1000 characters

Limit execution time to: 10 minutes

Warn if cost estimate exceeds: unchecked

SQL parameters:

Query

Allow use of subqueries: yes

Allow use of union, intersect and minus operators: yes

Allow complex conditions in Query Panel: yes

Cartesian products: warn

Multiple paths

Generate several SQL statements for each context: yes

Generate several SQL statements for each measure: yes

Allow selection of multiple contexts: no

Links: No links for this universe.

Hierarchies List

- Change
- Service
- CreateTimePeriod
- ClosedTimePeriod
- OutageStartPeriod
- OutageEndPeriod

Hierarchies

Change

- Change/Urgency
- Change/Priority
- Change/ApprovalStatus
- Change/ChangeCategory
- Change/CompletionCode
- Change/EmergencyChange
- Change/UnplannedChange

Service

- Service/Name
- Service/DisplayLabel
- Service/BusinessCriticality
- Service/State
- Service/Type
- Service/Level0
- Service/Level1
- Service/Level2
- Service/Level3
- Service/Level4
- Service/Level5
- Service/Level6
- Service/Level7
- Service/Level8
- Service/Level9

CreateTimePeriod

- CreateTimePeriod/Name
- CreateTimePeriod/DisplayLabel
- CreateTimePeriod/StartDate
- CreateTimePeriod/EndDate
- CreateTimePeriod/Periodicity
- CreateTimePeriod/PeriodNumber
- CreateTimePeriod/FinancialUsage
- CreateTimePeriod/YearNumber
- CreateTimePeriod/Year
- CreateTimePeriod/Quarter
- CreateTimePeriod/Month
- CreateTimePeriod/Week
- CreateTimePeriod/Day

ClosedTimePeriod

- ClosedTimePeriod/Name
- ClosedTimePeriod/DisplayLabel
- ClosedTimePeriod/StartDate
- ClosedTimePeriod/EndDate
- ClosedTimePeriod/Periodicity

- ClosedTimePeriod/PeriodNumber
- ClosedTimePeriod/FinancialUsage
- ClosedTimePeriod/YearNumber
- ClosedTimePeriod/Year
- ClosedTimePeriod/Quarter
- ClosedTimePeriod/Month
- ClosedTimePeriod/Week
- ClosedTimePeriod/Day

OutageStartPeriod

- OutageStartPeriod/Name
- OutageStartPeriod/DisplayLabel
- OutageStartPeriod/StartDate
- OutageStartPeriod/EndDate
- OutageStartPeriod/Periodicity
- OutageStartPeriod/PeriodNumber
- OutageStartPeriod/FinancialUsage
- OutageStartPeriod/YearNumber
- OutageStartPeriod/Year
- OutageStartPeriod/Quarter
- OutageStartPeriod/Month
- OutageStartPeriod/Week
- OutageStartPeriod/Day

OutageEndPeriod

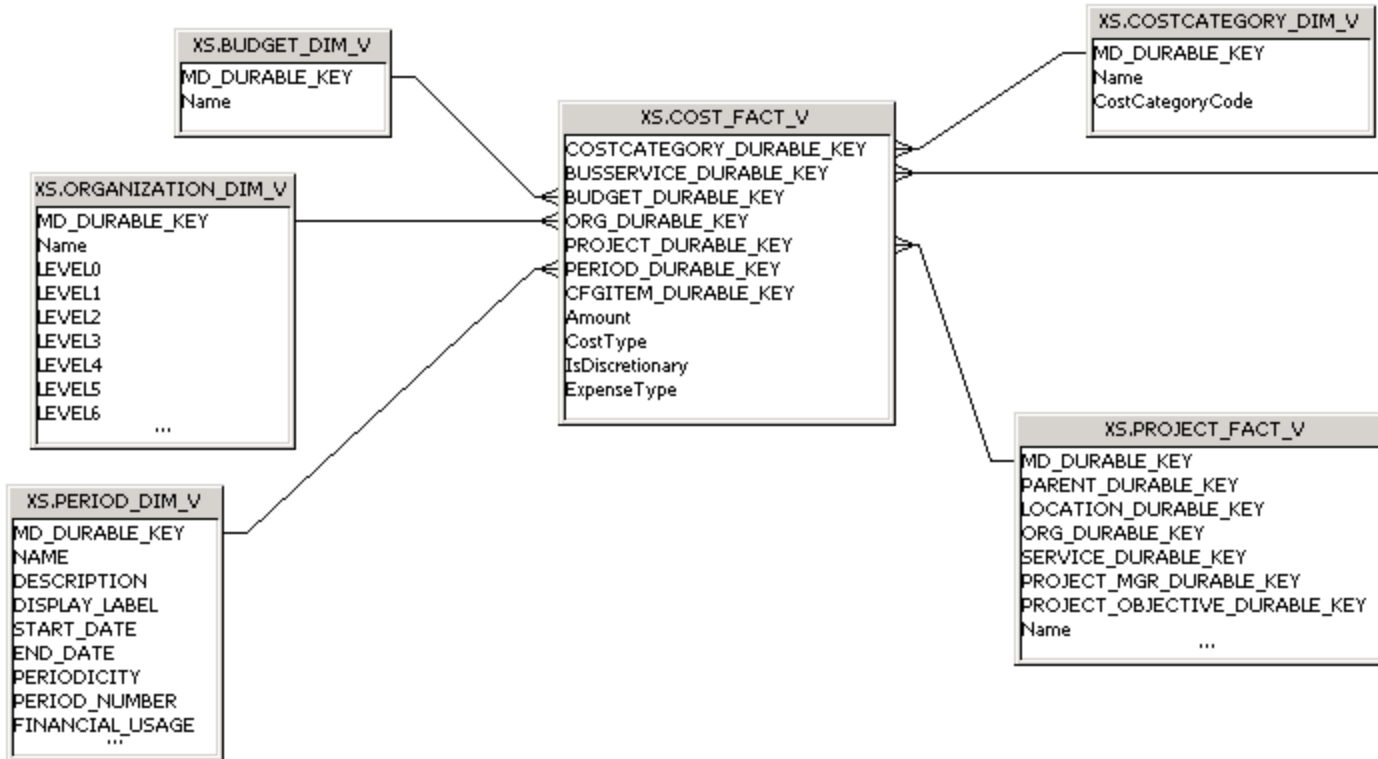
- OutageEndPeriod/Name
- OutageEndPeriod/DisplayLabel
- OutageEndPeriod/StartDate
- OutageEndPeriod/EndDate
- OutageEndPeriod/Periodicity
- OutageEndPeriod/PeriodNumber
- OutageEndPeriod/FinancialUsage
- OutageEndPeriod/YearNumber
- OutageEndPeriod/Year
- OutageEndPeriod/Quarter
- OutageEndPeriod/Month
- OutageEndPeriod/Week
- OutageEndPeriod/Day

Financial Management Universe

The goal of an IT Financial Management universe is to ensure that the IT infrastructure is obtained at the most effective price (which does not necessarily mean the cheapest) and to calculate the cost of providing IT services so that an organization can understand the costs of its IT services. These costs may then be recovered from the customer of the service.

HP Project and Portfolio Management is the data source used by this universe.

The following universe contains the attributes and classes that pertain to Financial Management.



Universe Parameters

Definition

Name: FinancialManagement

Description:

Connection: XS_DWH_JDBC

Statistics:

- 13 Classes
- 105 Objects
- 11 Tables
- 2 Aliases
- 12 Joins
- 0 Contexts

- 0 Hierarchies
- 0 Conditions

Strategies:

Join strategy: Edit Manually (none)

Table strategy: (Built-in) Standard

Object strategy: (Built-in) Standard Renaming

Controls:

Limit size of result set to: 5000 rows

Limit size of long text objects to: 1000 characters

Limit execution time to: 10 minutes

Warn if cost estimate exceeds: unchecked

SQL parameters:

Query

Allow use of subqueries: yes

Allow use of union, intersect and minus operators: yes

Allow complex conditions in Query Panel: yes

Cartesian products: warn

Multiple paths

Generate several SQL statements for each context: yes

Generate several SQL statements for each measure: yes

Allow selection of multiple contexts: no

Links: No links for this universe.

Hierarchies List

- Cost
- CostCategory
- Budget
- BudgetLine
- Service
- Application
- Organization
- Customer
- Supplier
- ITFunction
- Program
- Project
- Period

Hierarchies

Cost

- Cost/CostType
- Cost/IsDiscretionary
- Cost/ExpenseType
- CostCategory
- CostCategory/Name
- CostCategory/CostCategoryCode

Budget

- Budget/Name
- BudgetLine
- BudgetLine/Name

Service

- Service/Name
- Service/DisplayLabel
- Service/BusinessCriticality
- Service/State
- Service/Type
- Service/Level0
- Service/Level1
- Service/Level2
- Service/Level3
- Service/Level4
- Service/Level5
- Service/Level6
- Service/Level7
- Service/Level8
- Service/Level9

Application

Application/Name

Organization

- Organization/Name
- Organization/Level0
- Organization/Level1
- Organization/Level2
- Organization/Level3
- Organization/Level4
- Organization/Level5
- Organization/Level6
- Organization/Level7
- Organization/Level8
- Organization/Level9

Customer

- Customer/Name
- Customer/Level0
- Customer/Level1
- Customer/Level2
- Customer/Level3
- Customer/Level4
- Customer/Level5
- Customer/Level6
- Customer/Level7
- Customer/Level8
- Customer/Level9

Supplier

- Supplier/Name
- Supplier/Level0
- Supplier/Level1
- Supplier/Level2
- Supplier/Level3
- Supplier/Level4
- Supplier/Level5
- Supplier/Level6
- Supplier/Level7
- Supplier/Level8
- Supplier/Level9

ITFunction

ITFunction/Name

Program

Program/Name

Project

- Project/Name
- Project/Class
- Project/ProjectGroup
- Project/Status
- Project/RiskRating
- Project/ActiveIndicator
- Project/HasObjectiveIndicator
- Project/InControlIndicator
- Project/OnTimeIndicator
- Project/HealthIndicator
- Project/FlagActive
- Project/FlagCompleted
- Project/WorkPlanCreatedDate
- Project/Level0

- Project/Level1
- Project/Level2
- Project/Level3
- Project/Level4
- Project/Level5
- Project/Level6
- Project/Level7
- Project/Level8
- Project/Level9

Period

- Period/Name
- Period/DisplayLabel
- Period/StartDate
- Period/EndDate
- Period/Periodicity
- Period/PeriodNumber
- Period/FinancialUsage
- Period/YearNumber
- Period/Year
- Period/Quarter
- Period/Month
- Period/Week
- Period/Day

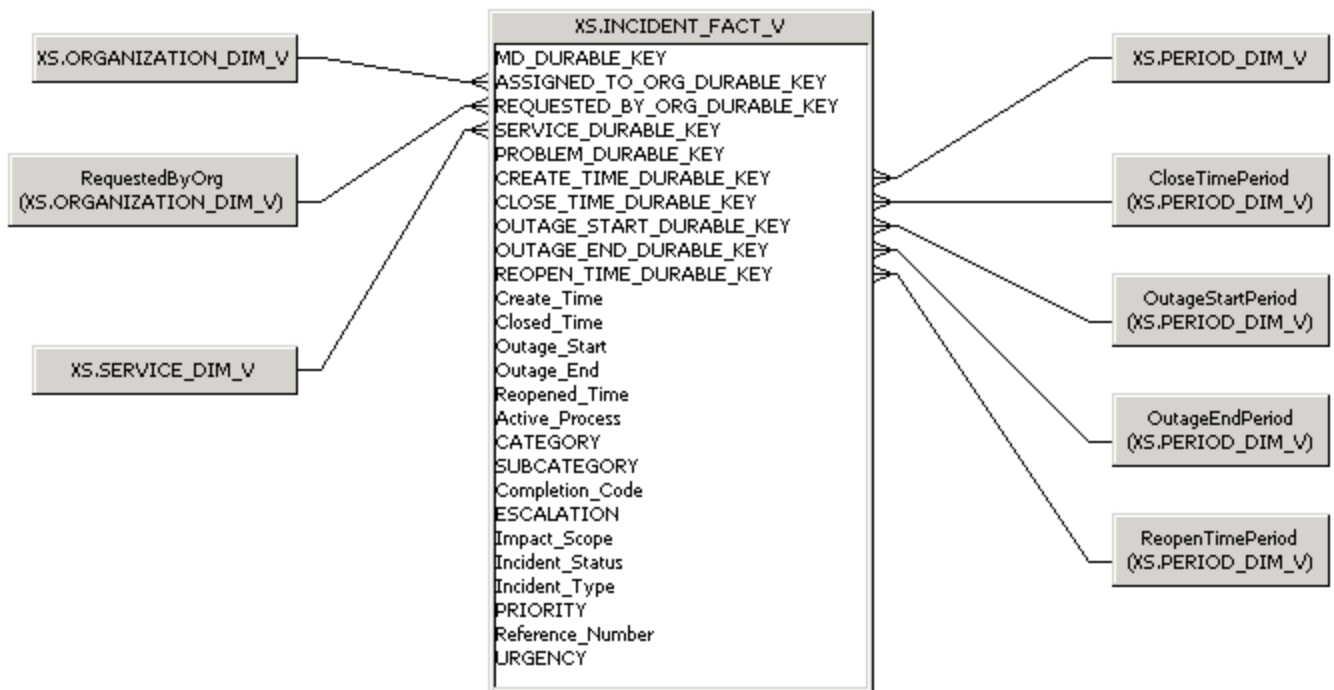
Incident Management Universe

Incident Management aims to restore normal service operation as quickly as possible and minimize the adverse effect on business operations, thus ensuring that the best possible levels of service - quality and availability - are maintained. 'Normal service operation' is defined here as service operation within Service Level Agreement (SLA) limits. An 'Incident' is any event which is not part of the standard operation of the service and which causes, or may cause, an interruption or a reduction of the quality of the service.

The objective of Incident Management is to restore normal operations as quickly as possible with the least possible impact on either the business or the user, at a cost-effective price.

HP Service Manager is the data source used by this universe.

The following universe contains the attributes and classes that pertain to Incident Management.



Universe Parameters

Definition:

Name: IncidentManagement

Description:

Connection: XS_DWH_JDBC

Statistics:

- 9 Classes
- 124 Objects
- 4 Tables
- 5 Aliases

- 8 Joins
- 0 Contexts
- 0 Hierarchies
- 0 Conditions

Strategies:

Join strategy: Edit Manually (none)

Table strategy: (Built-in) Standard

Object strategy: (Built-in) Standard Renaming

Controls:

Limit size of result set to: 5000 rows

Limit size of long text objects to: 1000 characters

Limit execution time to: 10 minutes

Warn if cost estimate exceeds: unchecked

SQL parameters:

Query

Allow use of subqueries: yes

Allow use of union, intersect and minus operators: yes

Allow complex conditions in Query Panel: yes

Cartesian products: warn

Multiple paths

Generate several SQL statements for each context: yes

Generate several SQL statements for each measure: yes

Allow selection of multiple contexts: no

Links: No links for this universe.

Hierarchies List

- Incident
- Service
- AssignedToOrganization
- RequestedByOrganization
- CreateTimePeriod
- ClosedTimePeriod
- ReopenedTimePeriod
- OutageStartPeriod
- OutageEndPeriod

Hierarchies

Incident

- Incident/Status

- Incident/Type
- Incident/Category
- Incident/Subcategory
- Incident/Priority
- Incident/Urgency
- Incident/ActiveProcess
- Incident/CompletionCode
- Incident/Escalation
- Incident/ImpactScope
- Incident/ReferenceNumber

Service

- Service/Name
- Service/DisplayLabel
- Service/BusinessCriticality
- Service/State
- Service/Type
- Service/Level0
- Service/Level1
- Service/Level2
- Service/Level3
- Service/Level4
- Service/Level5
- Service/Level6
- Service/Level7
- Service/Level8
- Service/Level9

AssignedToOrganization

- AssignedToOrganization/Name
- AssignedToOrganization/Level0
- AssignedToOrganization/Level1
- AssignedToOrganization/Level2
- AssignedToOrganization/Level3
- AssignedToOrganization/Level4
- AssignedToOrganization/Level5
- AssignedToOrganization/Level6
- AssignedToOrganization/Level7
- AssignedToOrganization/Level8
- AssignedToOrganization/Level9

RequestedByOrganization

- RequestedByOrganization/Name
- RequestedByOrganization/Level0
- RequestedByOrganization/Level1
- RequestedByOrganization/Level2

- RequestedByOrganization/Level3
- RequestedByOrganization/Level4
- RequestedByOrganization/Level5
- RequestedByOrganization/Level6
- RequestedByOrganization/Level7
- RequestedByOrganization/Level8
- RequestedByOrganization/Level9

CreateTimePeriod

- CreateTimePeriod/Name
- CreateTimePeriod/DisplayLabel
- CreateTimePeriod/StartDate
- CreateTimePeriod/EndDate
- CreateTimePeriod/Periodicity
- CreateTimePeriod/PeriodNumber
- CreateTimePeriod/FinancialUsage
- CreateTimePeriod/YearNumber
- CreateTimePeriod/Year
- CreateTimePeriod/Quarter
- CreateTimePeriod/Month
- CreateTimePeriod/Week
- CreateTimePeriod/Day
- ClosedTimePeriod
- ClosedTimePeriod/Name
- ClosedTimePeriod/DisplayLabel
- ClosedTimePeriod/StartDate
- ClosedTimePeriod/EndDate
- ClosedTimePeriod/Periodicity
- ClosedTimePeriod/PeriodNumber
- ClosedTimePeriod/FinancialUsage
- ClosedTimePeriod/YearNumber
- ClosedTimePeriod/Year
- ClosedTimePeriod/Quarter
- ClosedTimePeriod/Month
- ClosedTimePeriod/Week
- ClosedTimePeriod/Day

ReopenedTimePeriod

- ReopenedTimePeriod/Name
- ReopenedTimePeriod/DisplayLabel
- ReopenedTimePeriod/StartDate
- ReopenedTimePeriod/EndDate
- ReopenedTimePeriod/Periodicity
- ReopenedTimePeriod/PeriodNumber
- ReopenedTimePeriod/FinancialUsage

- ReopenedTimePeriod/YearNumber
- ReopenedTimePeriod/Year
- ReopenedTimePeriod/Quarter
- ReopenedTimePeriod/Month
- ReopenedTimePeriod/Week
- ReopenedTimePeriod/Day

OutageStartPeriod

- OutageStartPeriod/Name
- OutageStartPeriod/DisplayLabel
- OutageStartPeriod/StartDate
- OutageStartPeriod/EndDate
- OutageStartPeriod/Periodicity
- OutageStartPeriod/PeriodNumber
- OutageStartPeriod/FinancialUsage
- OutageStartPeriod/YearNumber
- OutageStartPeriod/Year
- OutageStartPeriod/Quarter
- OutageStartPeriod/Month
- OutageStartPeriod/Week
- OutageStartPeriod/Day

OutageEndPeriod

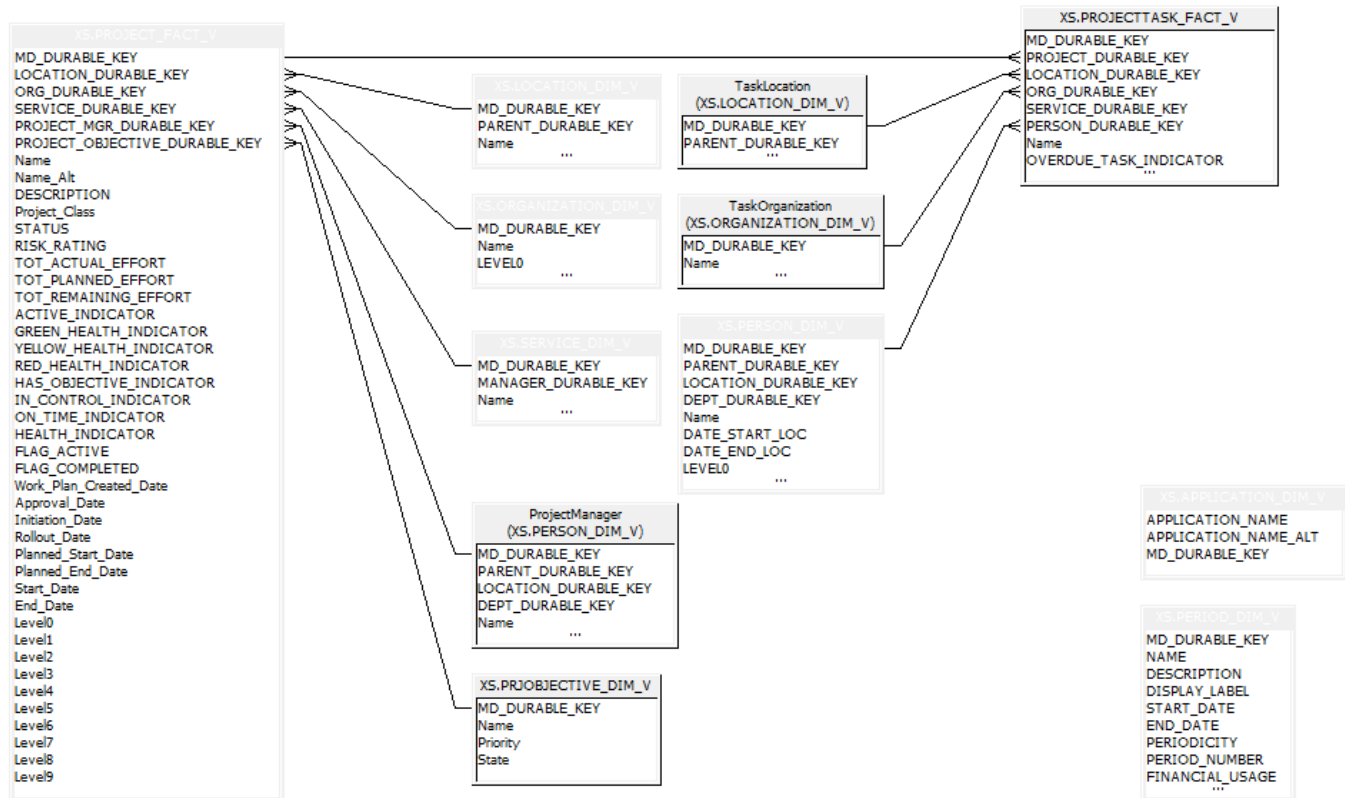
- OutageEndPeriod/Name
- OutageEndPeriod/DisplayLabel
- OutageEndPeriod/StartDate
- OutageEndPeriod/EndDate
- OutageEndPeriod/Periodicity
- OutageEndPeriod/PeriodNumber
- OutageEndPeriod/FinancialUsage
- OutageEndPeriod/YearNumber
- OutageEndPeriod/Year
- OutageEndPeriod/Quarter
- OutageEndPeriod/Month
- OutageEndPeriod/Week
- OutageEndPeriod/Day

Project Portfolio Management (PPM) Universe

Project Portfolio Management ensures that the IT Projects are managed in an appropriate way and that the organization investment is aligned to its strategic objectives and business goals. This insight can help the executives focus on the execution of their projects.

HP Project and Portfolio Management is the data source used by this universe.

The following universe contains the attributes and classes that pertain to PPM.



Universe Parameters

Definition:

Name: ProjectPortfolioManagement

Description:

Connection: XS_DWH_JDBC

Statistics:

- 13 Classes
- 154 Objects
- 9 Tables
- 4 Aliases
- 12 Joins
- 0 Contexts

- 0 Hierarchies
- 0 Conditions

Strategies:

Join strategy: Edit Manually (none)

Table strategy: (Built-in) Standard

Object strategy: (Built-in) Standard Renaming

Controls:

Limit size of result set to: 5000 rows

Limit size of long text objects to: 1000 characters

Limit execution time to: 10 minutes

Warn if cost estimate exceeds: unchecked

SQL parameters:

Query

Allow use of subqueries: yes

Allow use of union, intersect and minus operators: yes

Allow complex conditions in Query Panel: yes

Cartesian products: warn

Multiple paths

Generate several SQL statements for each context: yes

Generate several SQL statements for each measure: yes

Allow selection of multiple contexts: no

Links: No links for this universe.

Hierarchies List

- ProjectIssue
- ProjectRisk
- ProjectTask
- Project
- ProjectManager
- ProjectLocation
- ProjectOrganization
- ProjectObjective
- TaskLocation
- TaskOrganization
- Service
- Person
- IssueOwner

Hierarchies

ProjectIssue

- ProjectIssue/Name
- ProjectIssue/Priority
- ProjectIssue/Status
- ProjectIssue/Type
- ProjectIssue/Resolution

ProjectRisk

- ProjectRisk/Status
- ProjectRisk/Type
- ProjectRisk/Priority
- ProjectRisk/ReferenceNumber
- ProjectRisk/ActiveProcess
- ProjectRisk/ThresholdMet

ProjectTask

- ProjectTask/Name
- ProjectTask/OverdueTaskIndicator
- ProjectTask/ExternalResource

Project

- Project/Name
- Project/Class
- Project/ProjectGroup
- Project/Status
- Project/RiskRating
- Project/ActiveIndicator
- Project/HasObjectiveIndicator
- Project/InControlIndicator
- Project/OnTimeIndicator
- Project/HealthIndicator
- Project/FlagActive
- Project/FlagCompleted
- Project/WorkPlanCreatedDate
- Project/Level0
- Project/Level1
- Project/Level2
- Project/Level3
- Project/Level4
- Project/Level5
- Project/Level6
- Project/Level7
- Project/Level8
- Project/Level9

ProjectManager

- ProjectManager/Name
- ProjectManager/Level0
- ProjectManager/Level1
- ProjectManager/Level2
- ProjectManager/Level3
- ProjectManager/Level4
- ProjectManager/Level5
- ProjectManager/Level6
- ProjectManager/Level7
- ProjectManager/Level8
- ProjectManager/Level9

ProjectLocation

- ProjectLocation/Name
- ProjectLocation/Type
- ProjectLocation/CountryOrArea
- ProjectLocation/Region
- ProjectLocation/Locality
- ProjectLocation/PostalCode

ProjectOrganization

- ProjectOrganization/Name
- ProjectOrganization/Level0
- ProjectOrganization/Level1
- ProjectOrganization/Level2
- ProjectOrganization/Level3
- ProjectOrganization/Level4
- ProjectOrganization/Level5
- ProjectOrganization/Level6
- ProjectOrganization/Level7
- ProjectOrganization/Level8
- ProjectOrganization/Level9

ProjectObjective

- ProjectObjective/Name
- ProjectObjective/Priority
- ProjectObjective/State

TaskLocation

- TaskLocation/Name
- TaskLocation/LocationType
- TaskLocation/CountryOrArea
- TaskLocation/Region
- TaskLocation/Locality
- TaskLocation/PostalCode

TaskOrganization

- TaskOrganization/Name
- TaskOrganization/Level0
- TaskOrganization/Level1
- TaskOrganization/Level2
- TaskOrganization/Level3
- TaskOrganization/Level4
- TaskOrganization/Level5
- TaskOrganization/Level6
- TaskOrganization/Level7
- TaskOrganization/Level8
- TaskOrganization/Level9

Service

- Service/Name
- Service/DisplayLabel
- Service/BusinessCriticality
- Service/State
- Service/Type
- Service/Level0
- Service/Level1
- Service/Level2
- Service/Level3
- Service/Level4
- Service/Level5
- Service/Level6
- Service/Level7
- Service/Level8
- Service/Level9

Person

- Person/Name
- Person/Level0
- Person/Level1
- Person/Level2
- Person/Level3
- Person/Level4
- Person/Level5
- Person/Level6
- Person/Level7
- Person/Level8
- Person/Level9

IssueOwner

- IssueOwner/Name
- IssueOwner/Level0
- IssueOwner/Level1

- IssueOwner/Level2
- IssueOwner/Level3
- IssueOwner/Level4
- IssueOwner/Level5
- IssueOwner/Level6
- IssueOwner/Level7
- IssueOwner/Level8
- IssueOwner/Level9

Service Desk Management Universe

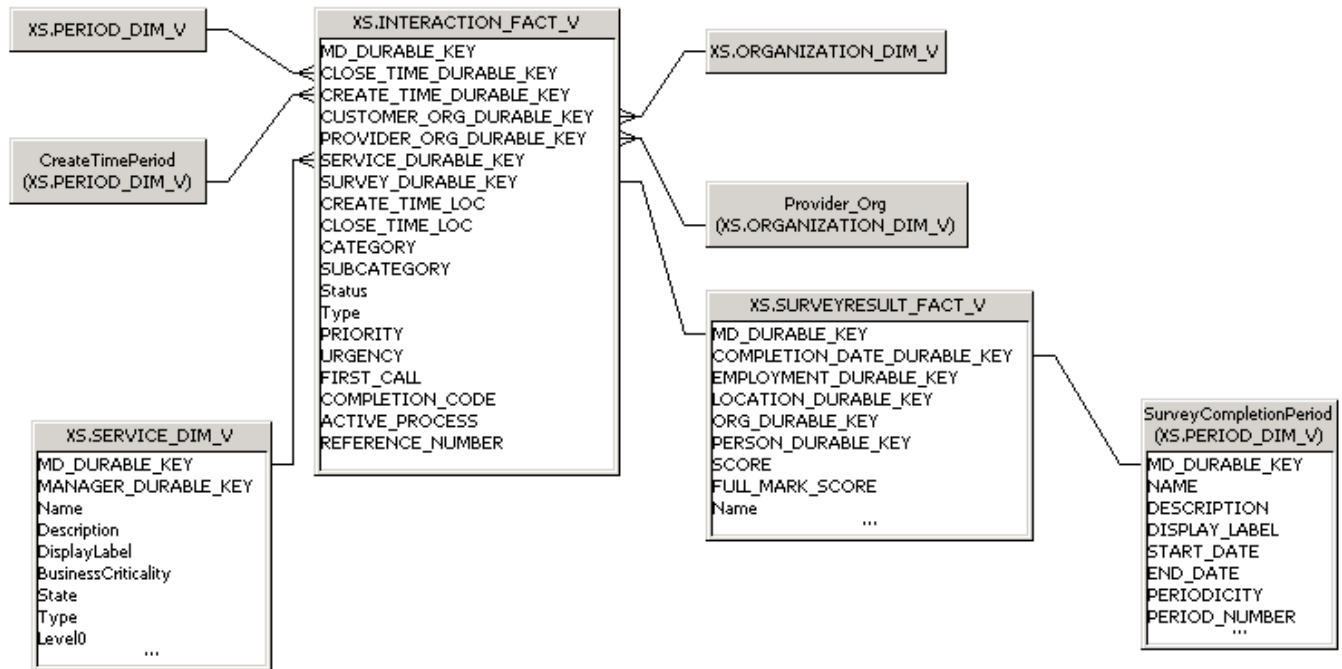
The ServiceDesk functions as the single contact-point for end-user incidents. ServiceDesk handles incidents, problems, and questions, and also provides an interface for other activities such as change requests, maintenance contracts, software licenses, service-level management, configuration management, availability management, financial management, and IT services continuity management

Its goal is to "create" an incident. If there is a direct solution, it attempts to resolve the incident at the first level. If the service desk cannot solve the incident then it is passed to a second or third level group within the incident management system. Incidents can initiate a chain of processes.

The ServiceDesk Management goals include: incident control (life-cycle management of all service requests) and communication (keeping the customer informed of progress and advising on workarounds).

HP Service Manager is the data source used by this universe.

The following universe contains the attributes and classes that pertain to Service Desk Management.



Universe Parameters

Definition:

Name: ServiceDesk

Description:

Connection: XS_DWH_JDBC

Statistics:

- 8 Classes

- 96 Objects
- 5 Tables
- 3 Aliases
- 7 Joins
- 0 Contexts
- 0 Hierarchies
- 0 Conditions

Strategies:

Join strategy: Edit Manually (none)

Table strategy: (Built-in) Standard

Object strategy: (Built-in) Standard Renaming

Controls:

Limit size of result set to: 5000 rows

Limit size of long text objects to: 1000 characters

Limit execution time to: 10 minutes

Warn if cost estimate exceeds: unchecked

SQL parameters:

Query

Allow use of subqueries: yes

Allow use of union, intersect and minus operators: yes

Allow complex conditions in Query Panel: yes

Cartesian products: warn

Multiple paths

Generate several SQL statements for each context: yes

Generate several SQL statements for each measure: yes

Allow selection of multiple contexts: no

Links: No links for this universe.

Hierarchies List

- Interaction
- CreateTimePeriod
- ClosedTimePeriod
- AssignedToOrganization
- RequestedByOrganization
- SurveyResult
- SurveyResultPeriod
- Service

Hierarchies

Interaction

- Interaction/Status
- Interaction/Type
- Interaction/Category
- Interaction/Urgency
- Interaction/Priority
- Interaction/CompletionCode
- Interaction/Subcategory
- Interaction/ActiveProcess
- Interaction/FirstCall

CreateTimePeriod

- CreateTimePeriod/Name
- CreateTimePeriod/DisplayLabel
- CreateTimePeriod/StartDate
- CreateTimePeriod/EndDate
- CreateTimePeriod/Periodicity
- CreateTimePeriod/Period Number
- CreateTimePeriod/FinancialUsage
- CreateTimePeriod/YearNumber
- CreateTimePeriod/Year
- CreateTimePeriod/Quarter
- CreateTimePeriod/Month
- CreateTimePeriod/Week
- CreateTimePeriod/Day

ClosedTimePeriod

- ClosedTimePeriod/Name
- ClosedTimePeriod/DisplayLabel
- ClosedTimePeriod/StartDate
- ClosedTimePeriod/EndDate
- ClosedTimePeriod/Periodicity
- ClosedTimePeriod/PeriodNumber
- ClosedTimePeriod/FinancialUsage
- ClosedTimePeriod/YearNumber
- ClosedTimePeriod/Year
- ClosedTimePeriod/Quarter
- ClosedTimePeriod/Month
- ClosedTimePeriod/Week
- ClosedTimePeriod/Day

AssignedToOrganization

- AssignedToOrganization/Name
- AssignedToOrganization/Level0
- AssignedToOrganization/Level1
- AssignedToOrganization/Level2

- AssignedToOrganization/Level3
- AssignedToOrganization/Level4
- AssignedToOrganization/Level5
- AssignedToOrganization/Level6
- AssignedToOrganization/Level7
- AssignedToOrganization/Level8
- AssignedToOrganization/Level9

RequestedByOrganization

- RequestedByOrganization/Name
- RequestedByOrganization/Level0
- RequestedByOrganization/Level1
- RequestedByOrganization/Level2
- RequestedByOrganization/Level3
- RequestedByOrganization/Level4
- RequestedByOrganization/Level5
- RequestedByOrganization/Level6
- RequestedByOrganization/Level7
- RequestedByOrganization/Level8
- RequestedByOrganization/Level9

SurveyResult

- SurveyResult/Name
- SurveyResult/Type
- SurveyResult/Score
- SurveyResult/FullMarkScore
- SurveyResultPeriod
- SurveyResultPeriod/Name
- SurveyResultPeriod/DisplayLabel
- SurveyResultPeriod/StartDate
- SurveyResultPeriod/EndDate
- SurveyResultPeriod/Periodicity
- SurveyResultPeriod/PeriodNumber
- SurveyResultPeriod/FinancialUsage
- SurveyResultPeriod/YearNumber
- SurveyResultPeriod/Year
- SurveyResultPeriod/Quarter
- SurveyResultPeriod/Month
- SurveyResultPeriod/Week
- SurveyResultPeriod/Day

Service

- Service/Name
- Service/DisplayLabel
- Service/BusinessCriticality
- Service/State

- Service/Type
- Service/Level0
- Service/Level1
- Service/Level2
- Service/Level3
- Service/Level4
- Service/Level5
- Service/Level6
- Service/Level7
- Service/Level8
- Service/Level9

Service Level Management Universe

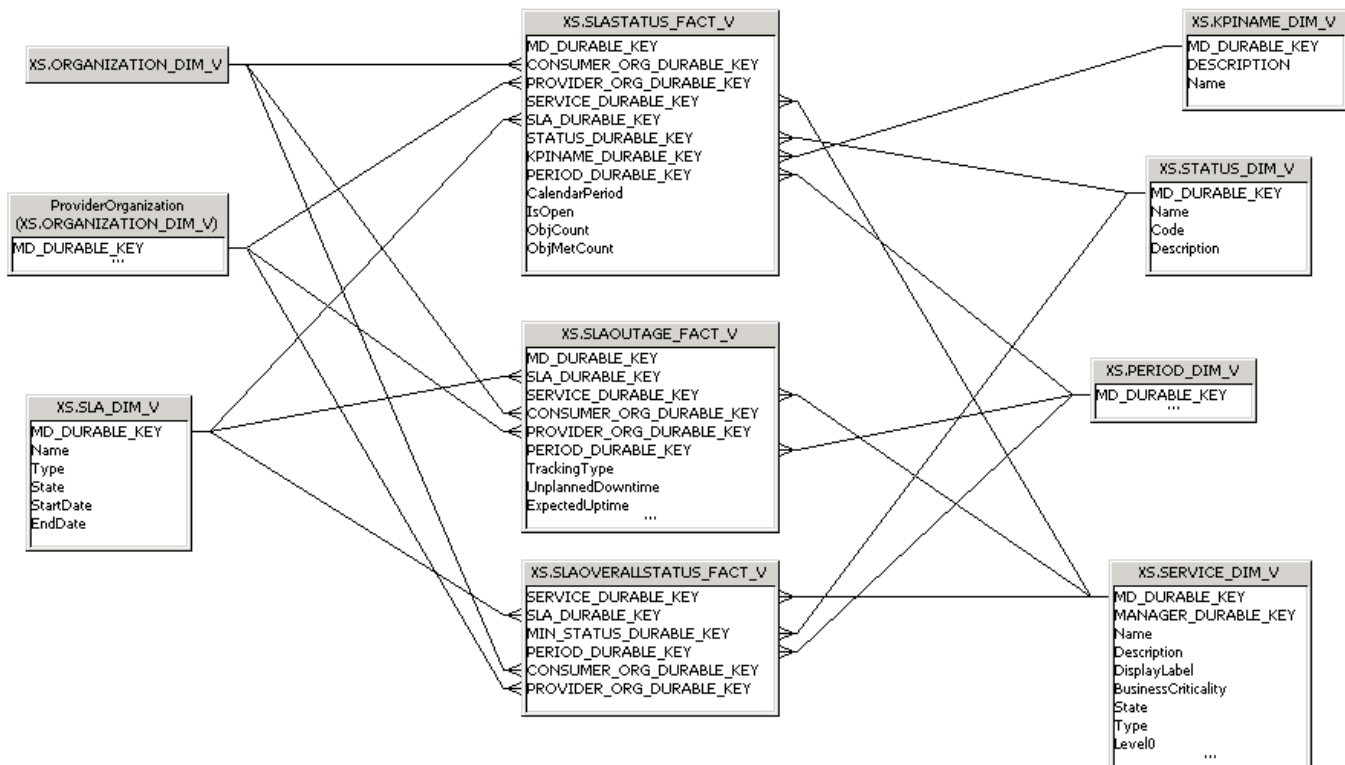
Service Level Management (SLM) provides for continual identification, monitoring and review of the levels of IT services specified in the Service Level Agreements (SLAs). Service Level Management ensures that arrangements are in place with internal IT Support-Providers and external suppliers in the form of Operational Level Agreements (OLAs) and Underpinning Contracts (UCs), respectively. The process involves assessing the impact of change upon service quality and SLAs.

Service Level Management is the primary interface with the customer (as opposed to the user serviced by the Service Desk). Service Level Management is responsible for ensuring that the agreed IT services are delivered when and where they are supposed to be, liaising with Availability Management, Capacity Management, Incident Management and Problem Management to ensure that the required levels and quality of service are achieved within the resources agreed with Financial Management, producing and maintaining a Service Catalog (a list of standard IT service options and agreements made available to customers), and ensuring that appropriate IT Service Continuity plans exist to support the business and its continuity requirements.

The Service Level Manager goal is to provide the agreed services in a cost-effective, secure and efficient manner.

HP Business Service Management and HP Service Manager are the data sources used by this universe.

The following universe contains the attributes and classes that pertain to SLM Management.



Universe Parameters

Definition:

Name: SLM

Description:

Connection: XS_DWH_JDBC

Statistics:

- 10 Classes
- 71 Objects
- 9 Tables
- 1 Aliases
- 18 Joins
- 3 Contexts
- 0 Hierarchies
- 0 Conditions

Strategies:

Join strategy: Edit Manually (none)

Table strategy: (Built-in) Standard

Object strategy: (Built-in) Standard Renaming

Controls:

Limit size of result set to: 5000 rows

Limit size of long text objects to: 1000 characters

Limit execution time to: 10 minutes

Warn if cost estimate exceeds: unchecked

SQL parameters:**Query**

Allow use of subqueries: yes

Allow use of union, intersect and minus operators: yes

Allow complex conditions in Query Panel: yes

Cartesian products: warn

Multiple paths

Generate several SQL statements for each context: yes

Generate several SQL statements for each measure: yes

Allow selection of multiple contexts: no

Links: No links for this universe.

Hierarchies List

- SLAStatus
- SLAOverAllStatus
- SLAOutage
- SLA
- KpiName

- Service
- Status
- Period
- ConsumerOrganization
- ProviderOrganization

Hierarchies

SLAStatus

- SLAStatus/CalendarPeriod
- SLAStatus/IsOpen

SLAOverAllStatus

SLAOverAllStatus/Code

SLAOutage

SLAOutage/TrackingType

SLA

- SLA/Name
- SLA/Type
- SLA/State

KpiName

KpiName/Name

Service

- Service/Name
- Service/DisplayLabel
- Service/BusinessCriticality
- Service/State
- Service/Type
- Service/Level0
- Service/Level1
- Service/Level2
- Service/Level3
- Service/Level4
- Service/Level5
- Service/Level6
- Service/Level7
- Service/Level8
- Service/Level9

Status

- Status/Name
- Status/Code

Period

- Period/Name

- Period/DisplayLabel
- Period/StartDate
- Period/EndDate
- Period/Periodicity
- Period/PeriodNumber
- Period/FinancialUsage
- Period/YearNumber
- Period/Year
- Period/Quarter
- Period/Month
- Period/Week
- Period/Day

ConsumerOrganization

- ConsumerOrganization/Name
- ConsumerOrganization/Level0
- ConsumerOrganization/Level1
- ConsumerOrganization/Level2
- ConsumerOrganization/Level3
- ConsumerOrganization/Level4
- ConsumerOrganization/Level5
- ConsumerOrganization/Level6
- ConsumerOrganization/Level7
- ConsumerOrganization/Level8
- ConsumerOrganization/Level9

ProviderOrganization

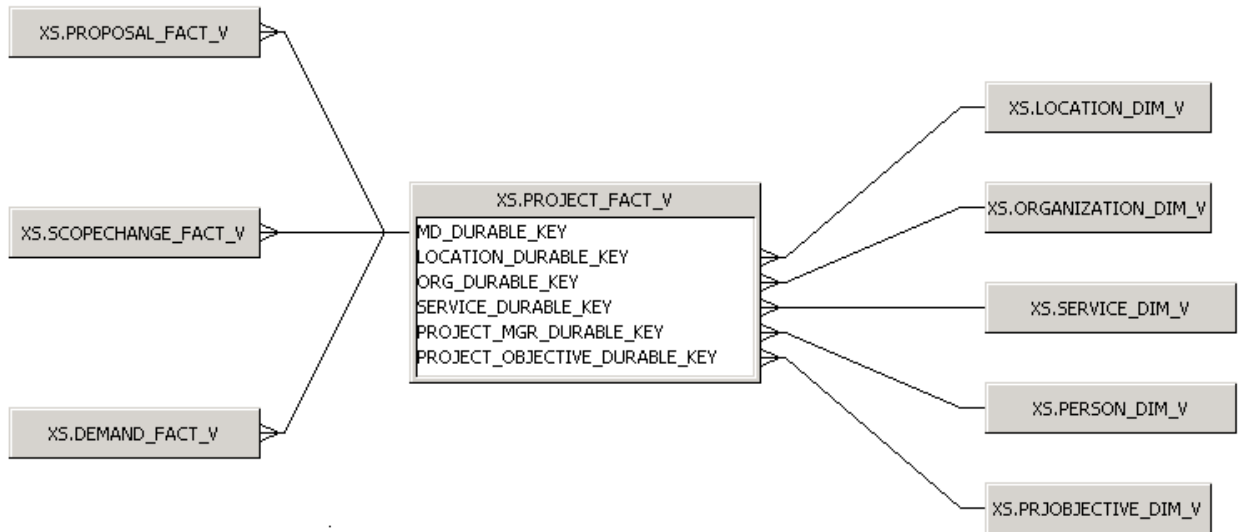
- ProviderOrganization/Name
- ProviderOrganization/Level0
- ProviderOrganization/Level1
- ProviderOrganization/Level2
- ProviderOrganization/Level3
- ProviderOrganization/Level4
- ProviderOrganization/Level5
- ProviderOrganization/Level6
- ProviderOrganization/Level7
- ProviderOrganization/Level8
- ProviderOrganization/Level9

Request Management Universe

Request management is the process of aligning IT service offerings with the needs of IT's customers and clients, as well as with overall business objectives. A catalog and request management system can help IT reduce costs, provide an enhanced user experience, track results more accurately, reduce service desk workload, and improve productivity.

HP Universal Configuration Management Database is the data source used by this universe.

The following universe contains the attributes and classes that pertain to Request Management.



Universe Parameters

Definition:

Name: RequestManagement

Description:

Connection: XS_DWH_JDBC

Statistics:

- 9 Classes
- 113 Objects
- 9 Tables
- 0 Aliases
- 8 Joins
- 0 Contexts
- 0 Hierarchies
- 0 Conditions

Strategies:

Join strategy: Edit Manually (none)

Table strategy: (Built-in) Standard

Object strategy: (Built-in) Standard Renaming

Controls:

Limit size of result set to: 5000 rows

Limit size of long text objects to: 1000 characters

Limit execution time to: 10 minutes

Warn if cost estimate exceeds: unchecked

SQL parameters:

Query

Allow use of subqueries: yes

Allow use of union, intersect and minus operators: yes

Allow complex conditions in Query Panel: yes

Cartesian products: warn

Multiple paths

Generate several SQL statements for each context: yes

Generate several SQL statements for each measure: yes

Allow selection of multiple contexts: no

Links: No links for this universe.

Hierarchies List

- Demand
- ScopeChange
- Proposal
- Project
- ProjectObjective
- Service
- Organization
- Location
- ProjectManager

Hierarchies

Demand

- Demand/Status
- Demand/Type
- Demand/Priority
- Demand/ReferenceNumber
- Demand/ActiveProcess

- Demand/ThresholdMet

ScopeChange

- ScopeChange/Status
- ScopeChange/Type
- ScopeChange/Priority
- ScopeChange/ReferenceNumber
- ScopeChange/ActiveProcess
- ScopeChange/ThresholdMet

Proposal

- Proposal/Status
- Proposal/Type
- Proposal/Priority
- Proposal/ReferenceNumber
- Proposal/ActiveProcess
- Proposal/ThresholdMet

Project

- Project/Name
- Project/Class
- Project/ProjectGroup
- Project/Status
- Project/RiskRating
- Project/ActiveIndicator
- Project/HasObjectiveIndicator
- Project/InControlIndicator
- Project/OnTimeIndicator
- Project/HealthIndicator
- Project/FlagActive
- Project/FlagCompleted
- Project/WorkPlanCreatedDate
- Project/Level0
- Project/Level1
- Project/Level2
- Project/Level3
- Project/Level4
- Project/Level5
- Project/Level6
- Project/Level7
- Project/Level8
- Project/Level9

ProjectObjective

- ProjectObjective/Name
- ProjectObjective/Priority

- ProjectObjective/State

Service

- Service/Name
- Service/DisplayLabel
- Service/BusinessCriticality
- Service/State
- Service/Type
- Service/Level0
- Service/Level1
- Service/Level2
- Service/Level3
- Service/Level4
- Service/Level5
- Service/Level6
- Service/Level7
- Service/Level8
- Service/Level9

Organization

- Organization/Name
- Organization/Level0
- Organization/Level1
- Organization/Level2
- Organization/Level3
- Organization/Level4
- Organization/Level5
- Organization/Level6
- Organization/Level7
- Organization/Level8
- Organization/Level9

Location

- Location/Name
- Location/LocationType
- Location/CountryOrArea
- Location/Region
- Location/Locality
- Location/PostalCode

ProjectManager

- ProjectManager/Name
- ProjectManager/Level0
- ProjectManager/Level1
- ProjectManager/Level2
- ProjectManager/Level3

- ProjectManager/Level4
- ProjectManager/Level5
- ProjectManager/Level6
- ProjectManager/Level7
- ProjectManager/Level8
- ProjectManager/Level9

