

WinRunner®
Oracle Add-in Installation Guide
Version 7.0



MERCURY INTERACTIVE

WinRunner Oracle Add-in Installation Guide, Version 7.0

© Copyright 2001 by Mercury Interactive Corporation

All rights reserved. All text and figures included in this publication are the exclusive property of Mercury Interactive Corporation, and may not be copied, reproduced, or used in any way without the express permission in writing of Mercury Interactive. Information in this document is subject to change without notice and does not represent a commitment on the part of Mercury Interactive.

Mercury Interactive may have patents or pending patent applications covering subject matter in this document. The furnishing of this document does not give you any license to these patents except as expressly provided in any written license agreement from Mercury Interactive.

WinRunner, XRunner, LoadRunner, TestDirector, TestSuite, WebTest, and Astra are registered trademarks of Mercury Interactive Corporation in the United States and/or other countries. Astra SiteManager, Astra SiteTest, Astra QuickTest, Astra LoadTest, Topaz, RapidTest, QuickTest, Visual Testing, Action Tracker, Link Doctor, Change Viewer, Dynamic Scan, Fast Scan, and Visual Web Display are trademarks of Mercury Interactive Corporation in the United States and/or other countries.

This document also contains registered trademarks, trademarks and service marks that are owned by their respective companies or organizations. Mercury Interactive Corporation disclaims any responsibility for specifying which marks are owned by which companies or organizations.

If you have any comments or suggestions regarding this document, please send them via e-mail to documentation@mercury.co.il.

Mercury Interactive Corporation
1325 Borregas Avenue
Sunnyvale, CA 94089 USA

Table of Contents

Before You Install	1
Checking Your Package	1
System Requirements	1
Choosing the Appropriate Oracle Add-in	2
Selecting the Oracle Applications Add-in Support	2
Selecting the Developer 2000 Add-in Support	3
Installing Oracle Applications Add-in Support	4
Running the Oracle Applications Add-in Setup Program	4
Configuring your Oracle Application for Add-in Support	8
Installing Developer 2000 Add-in Support	10
Installing the WinRunner Add-in for Developer 2000	10
Installing the WinRunner Agent in your Developer 2000 Application	14
Disabling the WinRunner Agent	21
Disabling Oracle Applications and Developer 2000 Add-in Support	22

Before You Install

Welcome to the Oracle Add-in for WinRunner 7.0. This guide describes how to install Add-in support for Oracle Applications and for Developer 2000. It describes the differences between the two installation programs and how to select the one that fits your needs. It explains how to run the setup program, install the WinRunner Agent (for Developer 2000 applications), and set the appropriate configuration settings.

Before you begin to install the Oracle Applications or Developer 2000 Add-in, please review the following pre-installation procedures.

Checking Your Package

Please make sure your package contains the items below. If any item is missing or damaged, contact Mercury Interactive or your local distributor.

Program Disks

Your package contains:

- 1 CD-ROM

System Requirements

To successfully run WinRunner with the Oracle Applications or Developer 2000 Add-in, you need the following minimum system requirements:

Platform	An IBM-PC or compatible with a Pentium® /100MHz or higher microprocessor.
Memory	32 MB of RAM memory.
Operating System	Windows 95, Windows 98, or Windows NT 4.0.
Prerequisites	WinRunner 7.0 standalone installation.

Choosing the Appropriate Oracle Add-in

The Oracle Add-in CD-ROM contains two setup programs:

- ▶ Oracle Applications support setup program
- ▶ Oracle Developer 2000 support setup program

You can install both Add-ins, but only one add-in can be loaded each time you run WinRunner, so you must select the Add-in that is most appropriate for testing a given Oracle application.

In most cases, it is recommended to use the Developer 2000 Add-in support. In some situations, however, you may prefer, or may need, to use the Oracle Applications Add-in support.

Selecting the Oracle Applications Add-in Support

The WinRunner Add-in support for Oracle Applications enables you to test 16-bit or 32-bit Oracle applications. You should use the Oracle Applications Add-in support to test your Oracle application in the following situations:

- ▶ You are testing a 16-bit Oracle application with Forms 4.5
- ▶ You are using an Oracle client/server packaged application
- ▶ You cannot or do not want to install the WinRunner Agent pll code in your Oracle Application.

Selecting the Developer 2000 Add-in Support

The WinRunner Add-in support for Developer 2000 supports Developer 2000 with Forms 4.5 (32-bit), 5.0 and 6.0. This add-in enables you to record and run tests on Developer 2000 tables, and to insert GUI checkpoints into your test scripts to check the contents of tables.

When you install Developer 2000 Add-in support, you must also install the WinRunner Agent pll in your Developer 2000 application.

If you can install the WinRunner Agent in your Developer 2000 application and your application does not fall under any of the other conditions listed in “Selecting the Oracle Applications Add-in Support” on page 2, it is recommended to use the Developer 2000 Add-in.

Note: Before you install Oracle add-in support, you must have WinRunner 7.0 on your computer. Refer to your *WinRunner Installation Guide* for information on installing WinRunner.

Installing Oracle Applications Add-in Support

The installation process for the Oracle Applications Add-in support includes two stages:

- Running the Oracle Applications Add-in Setup Program
- Configuring your Oracle Application with Add-in Support

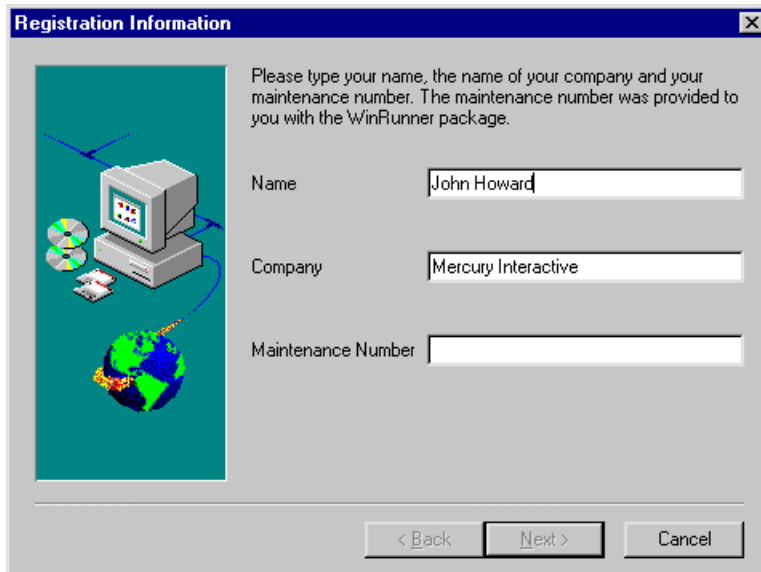
Running the Oracle Applications Add-in Setup Program

The setup program installs the Oracle Applications Add-in in your WinRunner installation folder.

To install Oracle Applications Add-in support:

- 1** Insert the CD-ROM into the drive from which you want to install. If you are installing from a network drive, connect to it.
- 2** Select **Run** on the **Start** menu.
- 3** Type the location from which you are installing, and ora_apps\setup.exe. For example, type d:\ora_apps\setup.exe.

- 4 In the **Registration Information** screen, type your name, the name of your company, and a WinRunner maintenance number. This number can be found in the Maintenance Pack Number envelope or on the bill of lading you received when you purchased WinRunner. Note that there is a single maintenance number for each team of users. (The maintenance number replaces what was formerly a serial number for each purchased copy of WinRunner. The maintenance number identifies the customer.

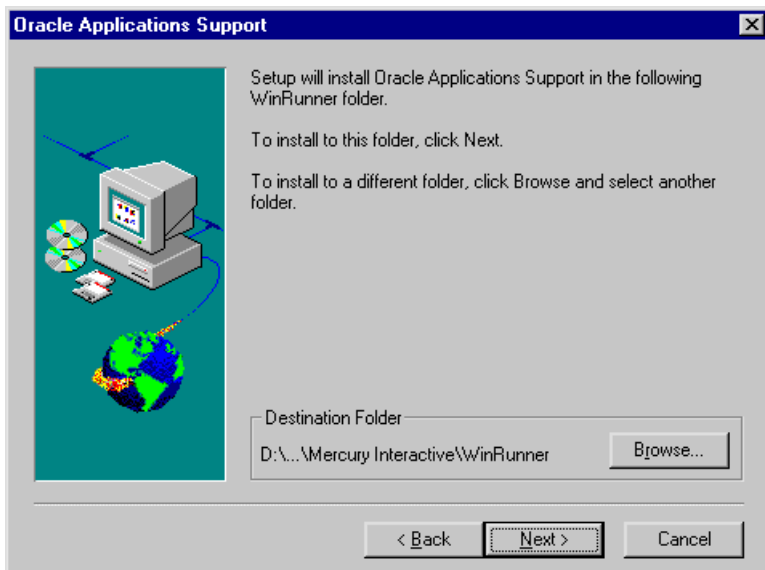


The image shows a Windows-style dialog box titled "Registration Information". On the left side, there is a graphic with a teal background depicting a computer monitor, a CD-ROM, and a globe. To the right of the graphic, there is a text instruction: "Please type your name, the name of your company and your maintenance number. The maintenance number was provided to you with the WinRunner package." Below this text are three input fields: "Name" containing "John Howard", "Company" containing "Mercury Interactive", and "Maintenance Number" which is empty. At the bottom of the dialog box, there are three buttons: "< Back", "Next >" (which is highlighted with a black border), and "Cancel".

Click **Next**.

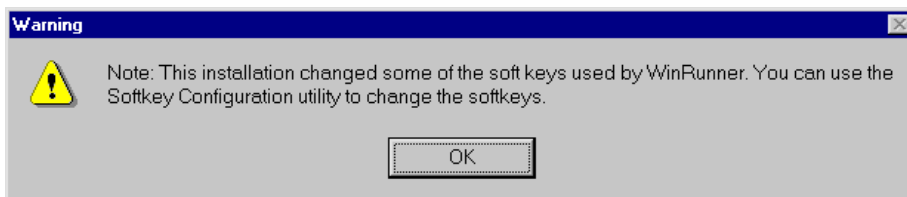
- 5 Click **Yes** to confirm the registration information.

- Specify the folder in which to install the Oracle Applications Add-in. The destination folder must be the WinRunner installation folder. If the installation folder that appears is not the WinRunner installation folder, click **Browse** to find the correct destination folder.



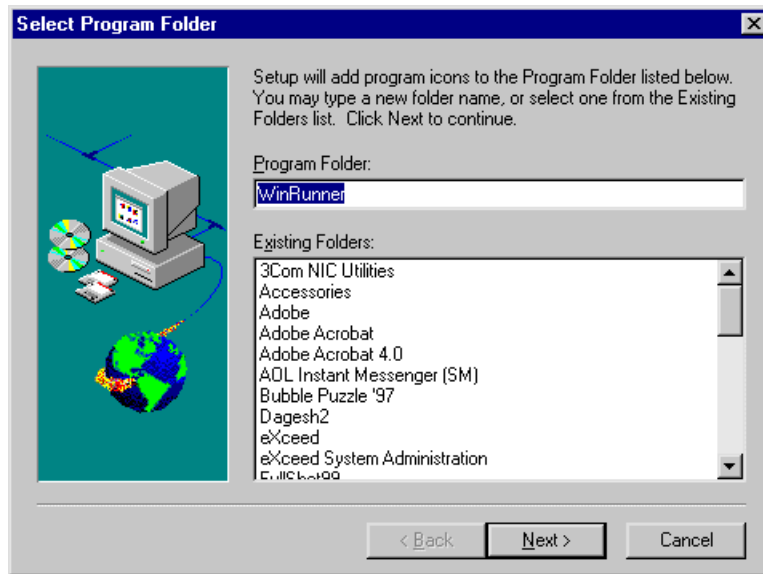
Click **Next**. The installation process begins. To pause or quit the installation, click **Cancel**.

- You may receive a message that some WinRunner soft keys were modified during this installation. Click **OK**.



You can modify WinRunner soft keys using WinRunner's Softkey Configuration utility. For more information on the Softkey Configuration utility, refer to the *WinRunner User's Guide*.

- 8 Select the program folder for the Oracle Applications Add-in icons.



Click **Next**.

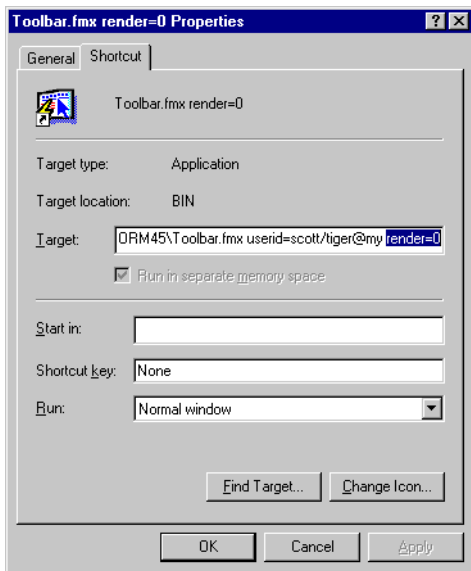
- 9 The Oracle Applications Add-in Installation is complete. Click **Finish**. It is recommended to restart your computer.

To read what's new in the Add-in support for Oracle Applications, and any last minute information, select the **Yes, I want to view the Read Me File** check box.

Configuring your Oracle Application for Add-in Support

Before you can use WinRunner with Oracle Application add-in support, you must configure your Oracle application to open properly.

To do this, open the Shortcut Properties dialog box of your Oracle application's shortcut icon. Click the **Shortcut** tab and add `render=0` to the end of the **Target** command line.



You are now ready to create and run tests on your Oracle application.



To start WinRunner with support for Oracle Applications, select **Programs > WinRunner > WinRunner** from the **Start** menu. The Add-in Manager dialog box opens. Select **Oracle Applications** and click **OK**.

Note: WinRunner cannot support the Oracle Applications Add-in and the Oracle Developer 2000 Add-in at the same time. If you select both of these add-ins in the Add-in Manager, you will receive an error message. Select **No** to return to the Add-in Manager and clear the check box for one of the Oracle Add-ins. If you select **Yes** to continue, WinRunner may not function properly.

Installing Developer 2000 Add-in Support

The Installation process for Developer 2000 Add-in support is comprised of two stages:

- First, you install the WinRunner Add-in for Developer 2000
- Then you install the WinRunner agent in your Developer 2000 Application

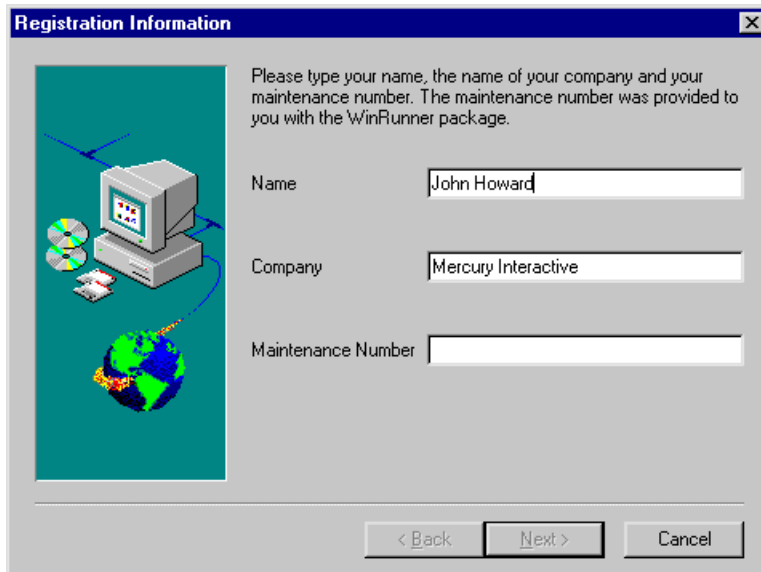
Installing the WinRunner Add-in for Developer 2000

The setup program installs the Developer 2000 Add-in in your WinRunner installation folder.

To install Developer 2000 Add-in support:

- 1** Insert the CD-ROM into the drive from which you want to install. If you are installing from a network drive, connect to it.
- 2** Select **Run** on the **Start** menu.
- 3** Type the location from which you are installing, and ora_dev2K\setup.exe. For example, type d:\ora_dev2K\setup.exe.

- 4 In the **Registration Information** screen, type your name, the name of your company, and a WinRunner maintenance number. This number can be found in the Maintenance Pack Number envelope or on the bill of lading you received when you purchased WinRunner. Note that there is a single maintenance number for each team of users. (The maintenance number replaces what was formerly a serial number for each purchased copy of WinRunner. The maintenance number identifies the customer.

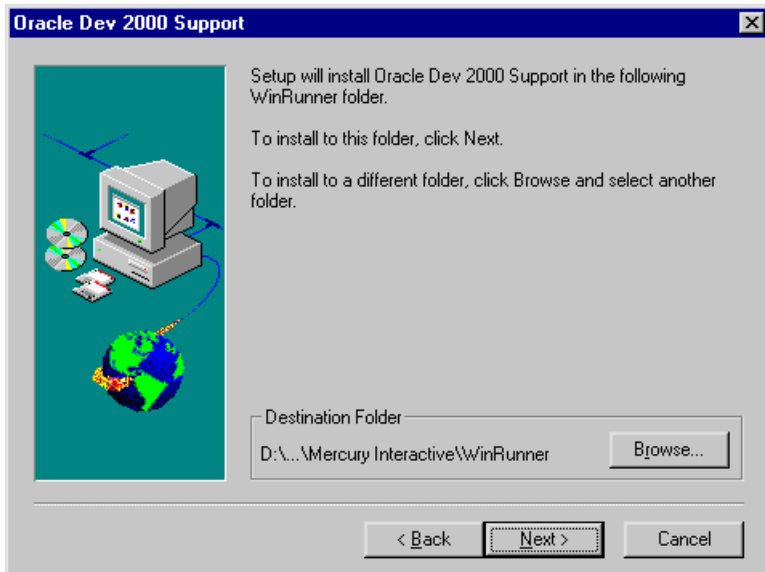


The image shows a Windows-style dialog box titled "Registration Information". On the left side, there is a graphic illustration of a computer monitor, a keyboard, a mouse, and a globe. To the right of the graphic, there is a text instruction: "Please type your name, the name of your company and your maintenance number. The maintenance number was provided to you with the WinRunner package." Below this instruction are three text input fields. The first field is labeled "Name" and contains the text "John Howard". The second field is labeled "Company" and contains the text "Mercury Interactive". The third field is labeled "Maintenance Number" and is currently empty. At the bottom of the dialog box, there are three buttons: "< Back", "Next >", and "Cancel". The "Next >" button is highlighted with a black border.

Click **Next**.

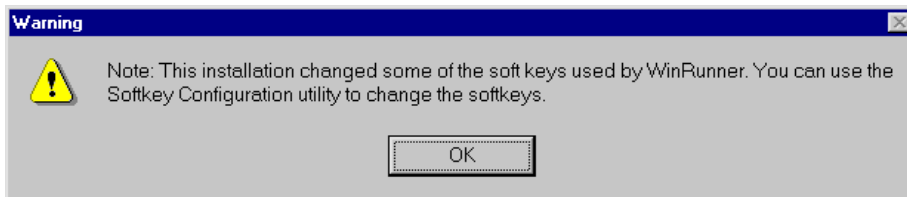
- 5 Click **Yes** to confirm the registration information.

- Specify the folder in which to install the Developer 2000 Add-in. The destination folder must be the WinRunner installation folder. If the installation folder that appears is not the WinRunner installation folder, click **Browse** to find the correct destination folder.



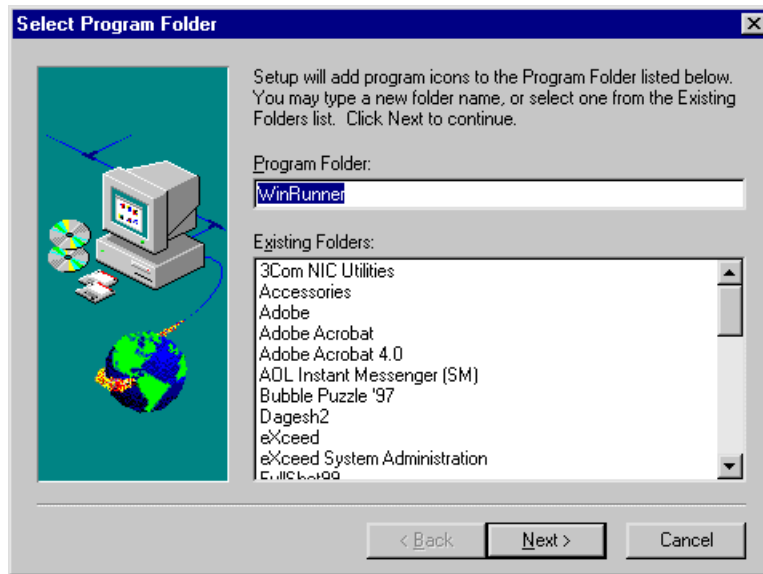
Click **Next**. The installation process begins. To pause or quit the installation, click **Cancel**.

- You may receive a message that some WinRunner soft keys were modified during this installation. Click **OK**.



You can modify WinRunner soft keys using WinRunner's Softkey Configuration utility. For more information on the Softkey Configuration utility, refer to the *WinRunner User's Guide*.

- 8 Select the program folder for the Oracle Applications Add-in icons.



Click **Next**.

- 9 The Developer 2000 Add-in installation is complete. Click **Finish**. It is recommended to restart your computer.

To read what's new in the Add-in support for Oracle Applications, and any last minute information, select the **Yes, I want to view the Read Me File** check box.

Installing the WinRunner Agent in your Developer 2000 Application

In order to use the Developer 2000 Add-in, you must add a WHEN-MOUSE-MOVE Trigger to your Form level for each form in your application, and you need to attach the `wr_agent.pll` to each of your forms.

Note: A Developer 2000 application with the WinRunner agent installed can run only on computers that also have WinRunner 7.0 or higher installed. You can disable the WinRunner agent if you need to run your application on computers without WinRunner 7.0 or higher installed. For more information please see “Disabling the WinRunner Agent” on page 21.

There are three ways to do this. To decide which method is best for you, select the category that best fits your needs:

- ▶ You use a central object group for all forms in your Developer 2000 application (recommended).
- ▶ You do not use a central object group for all forms in your Developer 2000 application and you would like to install the Agent automatically using the batch test provided with the Developer 2000 Add-in installation.
- ▶ You do not use a central object group for all forms in your Developer 2000 application and you would like to install the WinRunner agent manually for each *.fmb module.

Installing the WinRunner Agent via your Central Object Group

If you use a central object group for all forms in your Developer 2000 application, use the following method to install the WinRunner Agent.

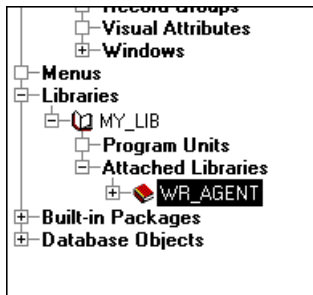
To install the WinRunner Agent via your central object group:

- 1** Copy the `wr_agent.pll` file located in *WinRunner Installation Folder\Oracle\pll* to the folder where your application’s pll library is located.
- 2** Start the Developer 2000 Forms Builder or Forms Designer.

- 3 Open the *wr_agent.pll* file and recompile it.

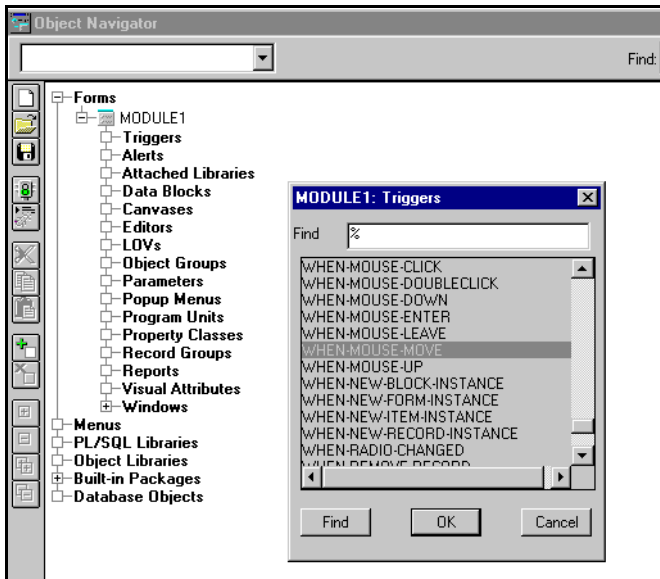
Note: You must recompile the *wr_agent.pll* file in your own Oracle environment in order for the WinRunner Agent to be compatible for your application.

- 4 Attach *wr_agent.pll* to the common library used by all projects.

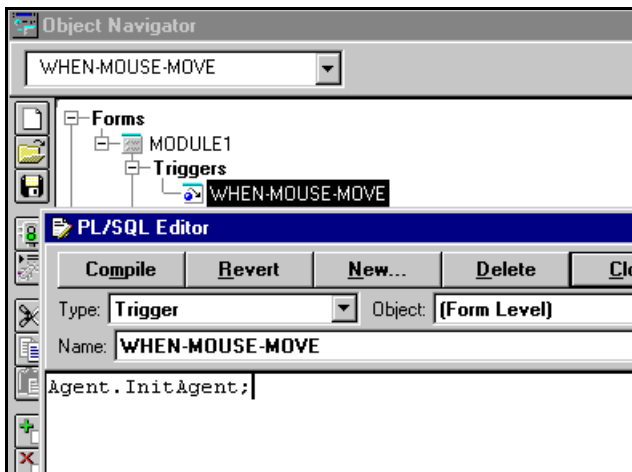


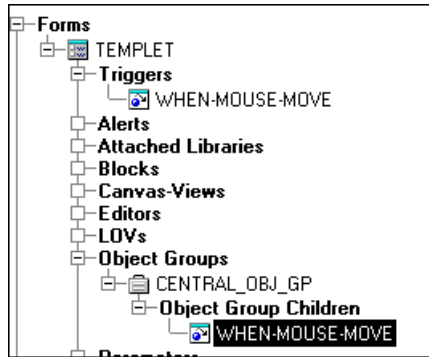
- 5 Open the *.fmb module containing your central object group.

- 6 In the Forms level, click on Triggers and select **Navigate > Create**. Create a new WHEN-MOUSE-MOVE Trigger.



- 7 Insert the code:
Agent.InitAgent



8 Drag the WHEN-MOUSE-MOVE Trigger to your Central Object Group**9** Recompile all of your *.fmb modules.**Installing the WinRunner Agent Automatically with the inst_ora Batch Test**

If you do not use a central object group for all forms in your Developer 2000 application and you want to install the WinRunner Agent automatically, use the following method.

To install the WinRunner Agent Automatically:

- 1** Open the inst_ora script in WinRunner from *WinRunner installation folder\lib\inst_ora*.
- 2** Modify the configuration parameters appropriately for your Oracle project and save the script.
 - Enter the path of your Oracle project in the line:
fmb_dir="C:\\MY_ORA_PROJ";
 - Enter your user ID in the line: DB_userid="scott/tiger@my";
 - Enter the version of Forms that you are using in the line:
FORM_VER="4.5"; # "4.5" or "5" or "6"
 - Enter the language you are using in the line: Lang="ENG"; # ENG or JAP
- 3** If the Forms Designer/Forms Builder is open, close it.
- 4** Run the inst_ora test.

- 5 When the test is complete, run the *compile_all.bat* file, or compile your project from the Forms Designer/Forms Builder. For more information about the *compile_all.bat* file, review the comments in the *inst_ora* script.

Note: Confirm that all forms open successfully without any error messages. The Forms Designer/Forms Builder may close if any error messages appear when the forms are opened.

Installing the WinRunner Agent Manually

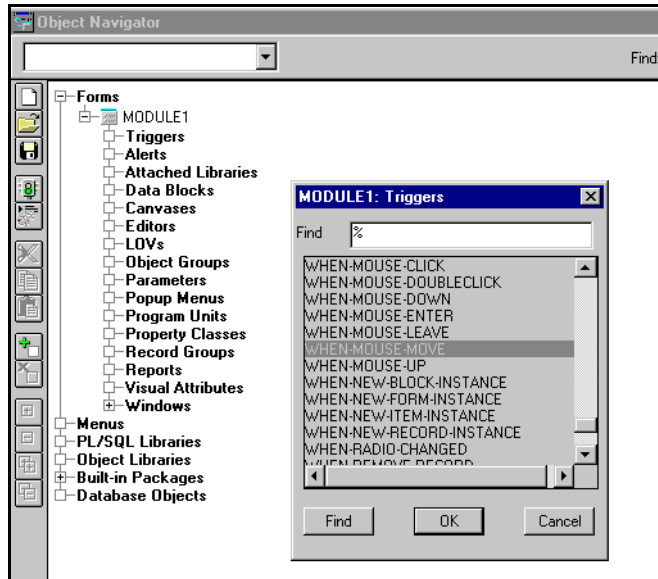
If you do not use a central object group for all forms in your Developer 2000 application and you want to install the WinRunner Agent manually, use the following method for each *.fmb module.

- 1 Copy the *wr_agent.pll* file located in *WinRunner Installation Folder\Oracle\pll* to the folder where your pll library is located.
- 2 Start the Developer 2000 Forms Designer/Forms Builder.
- 3 Open the *wr_agent.pll* file and recompile it.

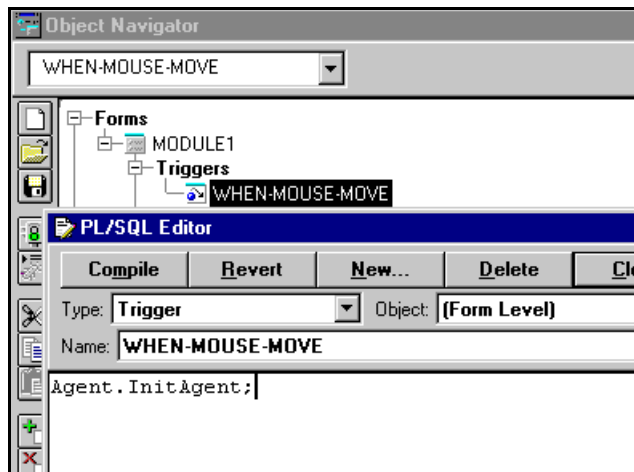
Note: You must recompile the *wr_agent.pll* file in your own Oracle environment in order for the WinRunner Agent to be compatible for your application.

- 4 Open your *.fmb module.
- 5 Click the **Attached Libraries** folder in the Object Navigator tree and select **Navigate > Create**. In the Attach Library dialog box click the **Browse** button. Find the library *wr_agent.pll* and click the **Attach** button.

- 6 In the Forms level of your object group, click on Triggers and select **Navigate > Create**. Create a new WHEN-MOUSE-MOVE Trigger.



- 7 Insert the code:
Agent.InitAgent



- 8 Repeat steps 4 - 7 for each fmb module.
- 9 Save and recompile your application.

You are now ready to create and run tests on your Oracle application.



To start WinRunner with support for Oracle Applications, select **Programs > WinRunner > WinRunner** from the **Start** menu. The Add-in Manager dialog box opens. Select **Oracle Applications** and click **OK**.

Note: WinRunner cannot support the Oracle Applications Add-in and the Oracle Developer 2000 Add-in at the same time. If you select both of these add-ins in the Add-in Manager, you will receive an error message. Select **No** to return to the Add-in Manager and clear the check box for one of the Oracle Add-ins. If you select **Yes** to continue, WinRunner may not function properly.

Disabling the WinRunner Agent

The WinRunner agent enables you to use WinRunner to test your Developer 2000 application. With this agent installed, however, you can only run your Developer 2000 application on computers with a WinRunner 7.0 or higher installation. After you have installed the WinRunner agent in your application, you can disable it in order to run the application on computers without a WinRunner 7.0 or higher installation.

To disable the WinRunner agent:

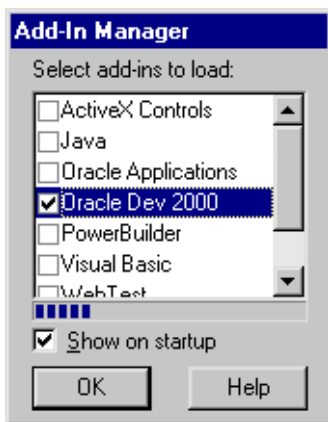
- 1** Copy the *wr_agent.dmy* file located in *WinRunner Installation Folder\Oracle\pll* to the folder where your application's pll library is located.
- 2** Delete or rename the file *wr_agent.pll* in your application's pll folder.
- 3** Rename the *wr_agent.dmy* file to *wr_agent.pll*.
- 4** Recompile the new *wr_agent.pll* file.

Disabling Oracle Applications and Developer 2000 Add-in Support

If you decide to use WinRunner Oracle Applications or Developer 2000 support, you can disable the Oracle Applications and Developer 2000 add-ins.

To disable the add-in support:

- 1** Select **Programs > WinRunner > WinRunner** from the **Start** menu to open WinRunner.
- 2** After the opening screen appears, the Add-In Manager dialog box opens for ten seconds. (If the Add-In Manager dialog box does not open, see the note below.)



To disable the Oracle Applications support, clear **Oracle Applications**. To disable the Developer 2000 support, clear **Oracle Dev 2000**.

- 3** Click **OK**. WinRunner opens with the add-in support disabled.

Note:

If the Add-In Manager dialog box does not open:

- 1** Start WinRunner.
 - 2** In **Settings > Options > Environment tab**, check **Show Add-in Manager dialog for ___ seconds** and fill in a comfortable amount of time in seconds. (The default value is 10 seconds.)
 - 3** Click **OK**.
 - 4** Close WinRunner. A WinRunner Message dialog opens asking “Would you like to save changes made in the configuration?” Click **Yes**.
 - 5** Open WinRunner again and proceed from Step 2 in “To disable the add-in support,” above.
-



MERCURY INTERACTIVE

Mercury Interactive Corporation

1325 Borregas Avenue
Sunnyvale, CA 94089 USA

Main Telephone: (408) 822-5200

Sales & Information: (800) TEST-911

Customer Support: (877) TEST-HLP

Fax: (408) 822-5300

Home Page: www.mercuryinteractive.com

Customer Support: support.mercuryinteractive.com



WRORAIG7.0/02