

HP OpenView Select Identity

Connector for HP-UX 11i Systems with Telnet

Installation and Configuration Guide

Connector Version: 3.3
Select Identity Version: 3.3



April 2005

© 2005 Hewlett-Packard Development Company, L.P.

Legal Notices

Warranty

Hewlett-Packard makes no warranty of any kind with regard to this document, including, but not limited to, the implied warranties of merchantability and fitness for a particular purpose. Hewlett-Packard shall not be held liable for errors contained herein or direct, indirect, special, incidental or consequential damages in connection with the furnishing, performance, or use of this material.

A copy of the specific warranty terms applicable to your Hewlett-Packard product can be obtained from your local Sales and Service Office.

Restricted Rights Legend

Use, duplication, or disclosure by the U.S. Government is subject to restrictions as set forth in subparagraph (c)(1)(ii) of the Rights in Technical Data and Computer Software clause in DFARS 252.227-7013.

Hewlett-Packard Company
United States of America

Rights for non-DOD U.S. Government Departments and Agencies are as set forth in FAR 52.227-19(c)(1,2).

Copyright Notices

© 2005 Hewlett-Packard Development Company, L.P.

No part of this document may be copied, reproduced, or translated into another language without the prior written consent of Hewlett-Packard Company. The information contained in this material is subject to change without notice.

This product includes software developed by the Apache Software Foundation (<http://www.apache.org/>). Portions Copyright (c) 1999-2003 The Apache Software Foundation. All rights reserved.

Select Identity uses software from the Apache Jakarta Project including:

- Commons-beanutils.
- Commons-collections.
- Commons-logging.
- Commons-digester.
- Commons-httpclient.

- Element Construction Set (ecs).
- Jakarta-poi.
- Jakarta-regexp.
- Logging Services (log4j).

Additional third party software used by Select Identity includes:

- JasperReports developed by SourceForge.
- iText (for JasperReports) developed by SourceForge.
- BeanShell.
- Xalan from the Apache XML Project.
- Xerces from the Apache XML Project.
- Java API for XML Processing from the Apache XML Project.
- SOAP developed by the Apache Software Foundation.
- JavaMail from SUN Reference Implementation.
- Java Secure Socket Extension (JSSE) from SUN Reference Implementation.
- Java Cryptography Extension (JCE) from SUN Reference Implementation.
- JavaBeans Activation Framework (JAF) from SUN Reference Implementation.
- OpenSPML Toolkit from OpenSPML.org.
- JGraph developed by JGraph.
- Hibernate from Hibernate.org.
- BouncyCastle engine for keystore management, bouncycastle.org.

This product includes software developed by Teodor Danciu <http://jasperreports.sourceforge.net>). Portions Copyright (C) 2001-2004 Teodor Danciu (teodord@users.sourceforge.net). All rights reserved.

Portions Copyright 1994-2004 Sun Microsystems, Inc. All Rights Reserved.

This product includes software developed by the Waveset Technologies, Inc. (www.waveset.com). Portions Copyright © 2003 Waveset Technologies, Inc. 6034 West Courtyard Drive, Suite 210, Austin, Texas 78730. All rights reserved.

Portions Copyright (c) 2001-2004, Gaudenz Alder. All rights reserved.

Trademark Notices

HP OpenView Select Identity is a trademark of Hewlett-Packard Development Company, L.P. Microsoft, Windows, the Windows logo, and SQL Server are trademarks or registered trademarks of Microsoft Corporation.

Sun™ workstation, Solaris Operating Environment™ software, SPARCstation™ 20 system, Java technology, and Sun RPC are registered trademarks or trademarks of Sun Microsystems, Inc. JavaScript is a trademark of Sun Microsystems, Inc., used under license for technology invented and implemented by Netscape.

This product includes the Sun Java Runtime. This product includes code licensed from RSA Security, Inc. Some portions licensed from IBM are available at <http://oss.software.ibm.com/icu4j/>.

IBM, DB2 Universal Database, DB2, WebSphere, and the IBM logo are trademarks or registered trademarks of International Business Machines Corporation in the United States, other countries, or both.

This product includes software provided by the World Wide Web Consortium. This software includes xml-apis. Copyright © 1994-2000 World Wide Web Consortium, (Massachusetts Institute of Technology, Institut National de Recherche en Informatique et en Automatique, Keio University). All Rights Reserved. <http://www.w3.org/Consortium/Legal/>

Intel and Pentium are trademarks or registered trademarks of Intel Corporation in the United States, other countries, or both.

AMD and the AMD logo are trademarks of Advanced Micro Devices, Inc.

BEA and WebLogic are registered trademarks of BEA Systems, Inc.

VeriSign is a registered trademark of VeriSign, Inc. Copyright © 2001 VeriSign, Inc. All rights reserved.

All other product names are the property of their respective trademark or service mark holders and are hereby acknowledged.

Support

Please visit the HP OpenView web site at:

<http://www.managementsoftware.hp.com/>

This web site provides contact information and details about the products, services, and support that HP OpenView offers.

You can also go directly to the support web site at:

<http://support.openview.hp.com/>

HP OpenView online software support provides customer self-solve capabilities. It provides a fast and efficient way to access interactive technical support tools needed to manage your business. As a valuable support customer, you can benefit by using the support site to:

- Search for knowledge documents of interest
- Submit and track progress on support cases
- Manage a support contract
- Look up HP support contacts
- Review information about available services
- Enter discussions with other software customers
- Research and register for software training

Most of the support areas require that you register as an HP Passport user and log in. Many also require a support contract.

To find more information about access levels, go to:

http://support.openview.hp.com/access_level.jsp

To register for an HP Passport ID, go to:

<https://passport.hp.com/hpp2/newuser.do>

contents

Chapter 1	Installing the Connector	7
	System Requirements	8
	Deploying on the Web Application Server	9
	Installing Expect, inetutils, and the Scripts	11
Chapter 2	Configuring the Connector	14
Chapter 3	Understanding the Mapping File	19
	General Information	20
	HP-UX Mapping Information	23
Chapter 4	Understanding the Installed Scripts	25
Chapter 5	Uninstalling the Connector	27
	On WebLogic	27
	On WebSphere	28
Appendix A	Troubleshooting	29

Installing the Connector

The HP-UX connector enables HP OpenView Select Identity to perform the following tasks on HP-UX 11i servers running Telnet:

- Add, update, and remove users
- Retrieve user attributes
- Enable and disable users
- Verify a user's existence
- Change user passwords
- Reset user passwords
- Retrieve all entitlements
- Retrieve a list of supported user attributes
- Assign and unassign entitlements to and from users



After the connector adds a user on the HP-UX 11i resource, the user's primary group should not be used as an entitlement because, if the primary group is changed, the primary group will remain as an entitlement in Select Identity but not on the resource.

The HP-UX connector is a one-way connector and pushes changes made to user data in the Select Identity database to a target server. The mapping file controls how Select Identity fields are mapped to HP-UX 11i fields.

The HP-UX connector is packaged in the following files:

- `unixtelschema.jar` — contains the mapping files
- `UnixTelnetConnector.rar` — contains the connector binary files
- `expect.hpux.telnet.scripts.zip` — contains the scripts used to communicate with the HP-UX 11i server

These files are located in the HP-UX 11i - Telnet/Unix HP-UX - Telnet directory on the Select Identity Connector CD.

System Requirements

The HP-UX connector is supported in the following environment:

Select Identity Version	Application Server	Database
3.0.2	WebLogic 8.1.2 on Windows 2003	SQL Server 2000
	WebLogic 8.1.2 on Solaris 9	Oracle 9i
	WebLogic 8.1.2 on HP-UX 11i	Oracle 9i
	WebSphere 5.1.1 on Solaris 9	DB2 8.2 (or DB2 8.1 Service Pack 7)
3.3	WebLogic 8.1.4 on Windows 2003	SQL Server 2000
	WebLogic 8.1.4 on Solaris 9	Oracle 9i

This connector is supported with HP-UX 11i.

Deploying on the Web Application Server

To install the HP-UX connector on the Select Identity server, complete these steps.

- 1 Create a subdirectory in the Select Identity home directory where the connector's RAR file will reside. For example, you could create the `C:\Select_Identity\connectors` folder on Windows. (A connector subdirectory may already exist.)
- 2 Copy the `UnixTelnetConnector.rar` file from the Select Identity Connector CD to the connector subdirectory.
- 3 If deploying the connector on WebLogic, complete the following steps. If deploying on WebSphere, skip to [Step 4 on page 10](#).
 - a Create a schema subdirectory in the Select Identity home directory where the connector's mapping file(s) will reside. For example, you could create the `C:\Select_Identity\schema` folder. (This subdirectory may already exist.)
 - b Extract the contents of the `unixtelschema.jar` file (on the Select Identity Connector CD) to the schema subdirectory.
 - c Ensure that the `CLASSPATH` environment variable in the WebLogic server startup script references the schema subdirectory.
 - d Start the application server if it is not currently running.
 - e Log on to the WebLogic Server Console.
 - f Navigate to **My_domain** → **Deployments** → **Connector Modules**.
 - g Click **Deploy a New Connector Module**.
 - h Locate and select the `UnixTelnetConnector.rar` file from the list. It is stored in the connector subdirectory.
 - i Click **Target Module**.
 - j Select the **My Server** (your server instance) check box.
 - k Click **Continue**. Review your settings.
 - l Keep all default settings and click **Deploy**. The Status of Last Action column should display Success.

- 4 If deploying the connector on WebSphere, complete the following steps:
 - a Stop the application server.
 - b Extract the contents of the `unixtelschema.jar` file (on the Select Identity Connector CD) to the `WebSphere\AppServer\lib\ext` directory.
 - c Start the application server.
 - d Log on to the WebSphere Application Server Console.
 - e Navigate to **Resources** → **Resource Adapters**.
 - f Click **Install RAR**.
 - g In the Server path field, enter the path to the `UnixTelnetConnector.rar` file. It is stored in the subdirectory created in [Step 1](#).
 - h Click **Next**.
 - i In the Name field, enter a name for the connector.
 - j Click **OK**.
 - k Click the **Save** link (at the top of the page).
 - l On the Save to Master Configuraton dialog, click the **Save** button.
 - m Click **Resources** → **Resource Adapters**.
 - n Click the new connector.
 - o Click **J2C Connection Factories** in the Additional Properties table.
 - p Click **New**.
 - q In the Name field, enter the name of the factory for the connector. For the SQL connector, enter **eis/UnixTelnetCon**.
 - r Click **OK**.
 - s Click the **Save** link.
 - t On the Save to Master Configuraton dialog, click the **Save** button.
 - u Restart WebSphere.

- 5 Modify the mapping file, if necessary. See [Understanding the Mapping File on page 19](#) for details.

After installing the connector, see [Configuring the Connector on page 14](#) to register and configure the connector in Select Identity.

Installing Expect, inetutils, and the Scripts

The HP-UX connector performs operations over Telnet using a tool called Expect, which must be installed on the application server running Select Identity. Perform the following steps:

- 1 Install Expect and Telnet, if they were not previously installed, as follows:

On the Select Identity server installed on UNIX:

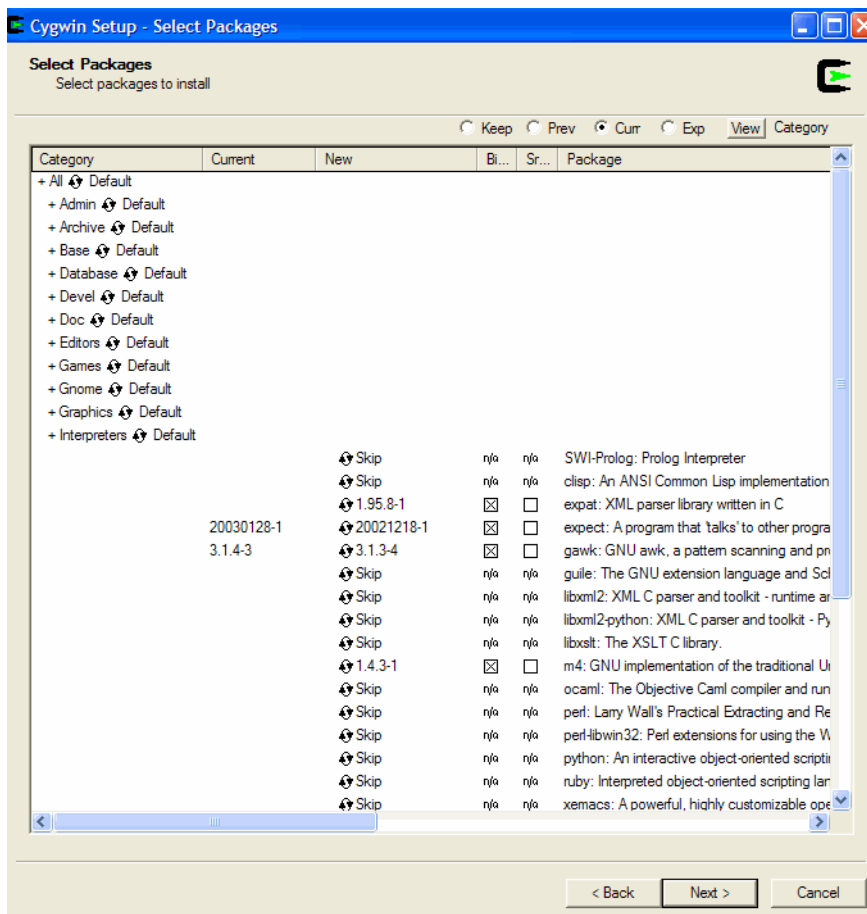
Download Expect from <http://expect.nist.gov/> and install it on the UNIX server. When deploying the UNIX system as a resource in the Select Identity interface, you will provide the location of the Expect executable on the Access Info page. TCL/TK and GCC are prerequisites for running Expect.

Telnet is provided by the operating system.

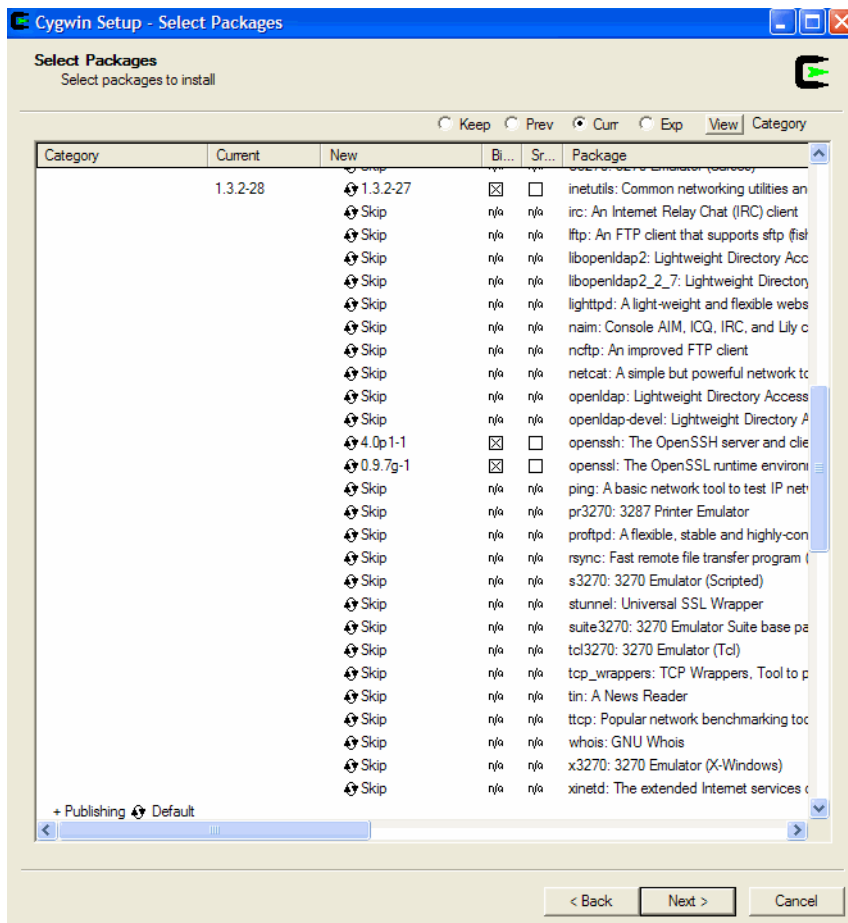
On the Select Identity server installed on Windows:

Download the Cygwin setup wizard from <http://www.cygwin.com/setup.exe>. Be sure to install Expect (version 5.26) and the inetutils

package. Expect is listed in the Interpreters category in Cygwin's installer:



inetutils are listed in the Net category:



- 2 Install the scripts on the application server. Copy `expect.hpux.telnet.scripts.zip` from the Select Identity Connector CD and extract the scripts onto the application server.
- 3 *On Windows:*
Ensure that Cygwin's `bin` directory is included in the Windows server `PATH` environment variable.

Configuring the Connector

After you deploy the connector on the application server, you must configure Select Identity to use the connector by deploying it in the Select Identity client. The following provides an overview of the procedures you must complete in order to deploy your connector. It also provides connector-specific information you must provide when configuring Select Identity to use the connector.

- 1 Register the connector with Select Identity by clicking the **Deploy New Connector** button on the Connectors home page. Complete this procedure as described in the “Connectors” chapter of the *HP OpenView Select Identity Administrator Guide*.

After you deploy the connector, the connector properties will look similar to this:

> [Home](#) > [Connectors](#) > **View Connector : Unix**

Connector Information	
* Connector Name:	Unix
* Pool Name:	eis/UnixTelnetCon

- 2 Deploy a resource that uses the newly created connector. On the Resources home page, click the **Deploy New Resource** button. When configuring the resource, refer to the following table for parameters specific to this connector:

Field Name	Sample Values	Description
Resource Name	HP_Server	Name given to the resource.
Resource Type	HP	The connector that was deployed in Step 1 on page 14 .
Authoritative Source	No	Whether this resource is a system that is considered to be the authoritative source for user data in your environment. You must specify No because the connector cannot synchronize account data with the Select Identity server.
Associate to Group	Selected	Whether the system uses the concept of groups. For this connector, select this option.
Host Name	server.company.com	IP Address or host name of the HP-UX 11i machine.
UserName	accountadmin	Login account on the HP-UX 11i machine.
UserPassword	Password123	Password for the UserName account.
AdminPassword	rootPassword	The password to gain administrator privileges.
Executable	/tools/expect-5.21/ expect.exe	Path name of the Expect executable, required to run scripts.

Field Name	Sample Values	Description
scriptLocation	<p><i>On UNIX:</i> /connectorScripts/expect/ HP</p> <p><i>On Windows:</i> /cygdrive/c/selectidentity/ scripts/</p>	Location of the Expect scripts that are used by the connector. Note that on Windows, you should include a trailing slash in the path.
mappingFile	UnixConnector-tel.xml	Location of the connector mapping file used to map resource attributes to Select Identity attributes.

Complete the steps in this procedure as described in the “Resources” chapter of the *HP OpenView Select Identity Administrator Guide*. After you deploy the resource, the Access Info properties for the resource will look similar to the following snapshots.

On a Select Identity server installed on UNIX:

[Home](#) > [Resources](#) > [View Resource](#) : dkUnixTel1

Resource Access Information	
* Resource Name:	dkUnixTel1
* HostName:	16.73.17.86
* User Name:	devi
* User Password:	****
* Admin Password:	*****
* Executable:	/usr/bin/expect
* Script Location:	/opt/si302/weblogic/Scripts
* Mapping File:	UnixConnector-tel.xml

On a Select Identity server installed on Windows:

[Home](#) > [Resources](#) > **View Resource : sabos04**

Resource Access Information	
* Resource Name:	sabos04
* HostName:	sabos04.can.hp.com
* User Name:	leevi
* User Password:	*****
* Admin Password:	*****
* Executable:	D:/select_identity/bin/expect.exe
* Script Location:	/cygdrive/d/select_identity/expect_scripts/
* Mapping File:	UnixConnector-tel.xml

- 3 Create attributes that link Select Identity to the connector. For each mapping in the connector's mapping file, create an attribute using the Attributes capability on the Select Identity client. Refer to the "Attributes" chapter in the *HP OpenView Select Identity Administrator Guide* for more information.

► If a new mapping file is associated with the resource in the future (using the Modify Resource page of the Select Identity client), keep the following points in mind:

- If an attribute in the old mapping file was mapped in Select Identity and that attribute is no longer included in the new mapping file, you must unmap the attribute before modifying the resource to include the new mapping file. Unmap attributes on the Modify Attribute page of the Select Identity client.
- You cannot unmap an attribute if Services are associated with the resource and users were added to the Service. Thus, you must add the attribute to the new mapping file, even though that attribute is no longer used by the connector.

After you create the attributes for the HP-UX connector, the View Attributes page for the resource will look similar to this:

(Resource Name=dkUnixTel1)				
<< < Page <input type="text" value="1"/> of 1 > >>				Total Records:9
Name	Min Length	Max Length	Attribute Mapped To	Authorative
Directory	1	50	Directory	N
First Name	0	50	FirstName	Y
Last Name	0	50	LastName	Y
Password	1	10	Password	N
Shell	1	50	Zip	N
User Name	1	8	dkAttr	N
defaultgroup	1	50	DefaultGroup	N
dkUnixTel1_ENTITLEMENTS	1	255	dkUnixTel1_ENTITLEMENTS	Y
dkUnixTel1_KEY	1	255	dkUnixTel1_KEY	Y

- 4 Create a Service that will use the newly created resource. To do so, click the **Deploy New Service** button on the Services home page. Complete this procedure as described in “Services” of the *HP OpenView Select Identity Administrator Guide*. You will reference your new resource created in [Step 2](#) while creating this service.

Understanding the Mapping File

The HP-UX connector is deployed with the `UnixConnector-tel.xml` mapping file, which describes the attributes required by the system. The file is created in XML, according to SPML standards, and is bundled in a JAR file called `unixtelschema.jar`. The mapping file is used to map user account additions and modifications from Select Identity to the HP-UX 11i resource. When you deploy a resource using the Resources page of the Select Identity client, you can review this file.

You can create attributes that are specific to Select Identity using the Attributes page in the Select Identity client. These attributes can be used to associate Select Identity user accounts with system resources by editing the connector mapping file described in this chapter. This process becomes necessary because, for example, a single attribute “username” can have a different name on different resources, such as “login” for UNIX, “UID” for a database, and “userID” on a Windows server.

This file does not need to be edited unless you want to map additional attributes to your resource. If attributes and values are not defined in this mapping file, they cannot be saved to the resource through Select Identity.

General Information

The following operations can be performed in the mapping file:

- Add a new attribute mapping
- Delete an existing attribute mapping
- Modify attribute mappings

Here is an explanation of the elements in the XML mapping file:

- **<Schema>**, **<providerID>**, and **<schemaID>**

Provides standard elements for header information.

- **<objectClassDefinition>**

Defines the actions that can be performed on the specified object as defined by that name attribute (in the `<properties>` element block) and the Select Identity-to-resource field mappings for the object (in the `<memberAttributes>` block). For example, the object class definition for users defines that users can be created, read, updated, deleted, reset, and expired in UNIX.

- **<properties>**

Defines the operations that are supported on the object. This can be used to control the operations that are performed through Select Identity. The following operations can be controlled:

- Create (CREATE)
- Read (READ)
- Update (UPDATE)
- Delete (DELETE)
- Enable (ENABLE)
- Disable (DISABLE)
- Reset password (RESET_PASSWORD)
- Expire password (EXPIRE_PASSWORD)
- Change password (CHANGE_PASSWORD)

The operation is assigned as the name of the <attr> element and access to the operation is assigned to a corresponding <value> element. You can set the values as follows:

- true — the operation is supported by the connector
- false — the operation is not supported by the connector
- bypass — the operation is not supported by the connector

Here is an example:

```
<objectClassDefinition name="User" description="Unix User">
  <properties>
    <attr name="CREATE">
      <value>true</value>
    </attr>
    <attr name="READ">
      <value>true</value>
    </attr>
```

- **<memberAttributes>**

Defines the attribute mappings. This element contains <attributeDefinitionReference> elements that describe the mapping for each attribute. Each <attributeDefinitionReference> must be followed by an <attributeDefinition> element that specifies details such as minimum length, maximum length, and so on.

Each <attributeDefinitionReference> element contains the following attributes:

- Name — the name of the reference.
- Required— if this attribute is required in the provisioning (set to true or false).
- Conzero:tafield — the name of the Select Identity resource attribute.
- Conzero:resfield — the name of the physical resource attribute from the resource schema. If the resource does not support an explicit schema (such as UNIX), this can be a tag field that indicates a resource attribute mapping.

- **Concero:isKey** — An optional attribute that, when set to true, specifies that this is the key field to identify the object on the resource. Only one `<attributeDefinitionReference>` can be specified where `isKey="true"`. This key field does not need to be the same as the key field of the identity object in Select Identity.
- **Concero:init** — An optional attribute that identifies that the attribute is initialized with the value of the attribute passed in from Select Identity.

Here is an example:

```
<memberAttributes>
  <attributeDefinitionReference name="GroupName"
    required="true" concero:tafield="GroupName"
    concero:resfield="gname" concero:isKey="true" />
</memberAttributes>
```

The interpretation of the mapping between the connector field (as specified by the `Concero:tafield` attribute) and the resource field (as specified by the `Concero:resfield` attribute) is determined by the connector. The Linux connector has code to interpret the mappings in one way, as follows:

- The connector attribute names are specified in square braces, like this: `[xyz]`. The value of attribute `xyz` is taken from the UserModel during provisioning.
- Composite attributes can be specified in the Linux connector mapping file. To do this, specify `[attr1] xxxx [attr2]` as the connector attribute. This specifies that the value of the `attr1` and `attr2` attributes should be combined with the string `xxxx` to form a mapping for the specified resource field. HP-UX connector has code to handle these composite mappings.

- **<attributeDefinition>**

Defines the properties of each object's attribute. For example, the attribute definition for the Directory attribute defines that it must be between one and 50 characters in length and can contain the following letters, numbers, and characters: a-z, A-Z, 0-9, @, +, and a space.

Here is an excerpt from the `UnixConnector_tel.xml` file:

```
<attributeDefinition name="Directory" description="Directory"
  type="xsd:string">
  <properties>
```

```

    <attr name="minLength">
      <value>1</value>
    </attr>
    <attr name="maxLength">
      <value>50</value>
    </attr>
    <attr name="pattern">
      <value>
        <![CDATA[ [a-zA-Z0-9/]+ ]]>
      </value>
    </attr>
  </properties>
</attributeDefinition>

```

- **<concerro:entitlementMappingDefinition>**
Defines how entitlements are mapped to users.
- **<concerro:objectStatus>**
Defines how to assign status to a user.
- **<concerro:relationshipDefinition>**
Defines how to create relationships between users.

HP-UX Mapping Information

The HP-UX connector supports the following identify information to be provisioned on the HP-UX 11i system. You can add, modify, or delete attributes once you are familiar with the contents of this file. You can edit the Select Identity resource attributes; they reflect the identity information as seen in Select Identity. The physical resource attributes are literal attributes of user accounts on the HP-UX 11i server. These attributes cannot be changed. See the *HP OpenView Select Identity Connector Developer Guide* for more information about attributes and mapping information.



When adding a user in Select Identity, avoid entering an entitlement (secondary groups) value that is the same value as the Default Group for the system resource. This may cause an entitlement to be inadvertently removed from the user if the user is modified and the Default Group value is changed for that user.

Select Identity Resource Attribute	Connector Attribute	Attribute on Solaris 8 Resource	Description
User Name	username	login (login argument)	UNIX logon name
Password	password	password	Logon password
First Name	F		First Name
Last Name	L		Last Name
[First Name] [Last Name]	comment	login comment (-c option)	Comment section in <code>/etc/passwd</code>
Directory	directory	login home directory (-d option)	User's home directory
Shell	shell	login shell (-s option)	UNIX logon shell
defaultgroup	defaultgroup	login primary group (-g option)	Default group membership

Understanding the Installed Scripts

The HP-UX connector performs operations using a tool called Expect. This tool must be installed on the application server running Select Identity.

The following scripts are provided during the connector installation:

- `adduser.exp`
This is the script used to add a new user to the HP-UX 11i system.
- `listuser.exp`
This script lists all users configured on the HP-UX 11i system.
- `changepassword.exp`
This script changes the password of a user on the HP-UX 11i system.
- `changestatus.exp`
This script changes a users status on the HP-UX 11i system.
- `deleteuser.exp`
This script deletes a user from the HP-UX 11i system.
- `dotest.exp`
This script is executed whenever a new connector is created. It is responsible for validating the connection.

- `finduser.exp`
This script is used to search for a user on the HP-UX 11i system.
- `genericcmd.exp`
This script is used to enable the execution of any command required by Select Identity.
- `modifyuser.exp`
This script is used to modify a user on the HP-UX 11i system.
- `getgroups.exp`
This script is used to get all group names for which the current user has membership on the HP-UX 11i system.

Uninstalling the Connector

If you need to uninstall a connector from Select Identity, make sure that the following are performed:

- All resource dependencies are removed.
- The connector is deleted using the Select Identity client Connectors pages.

On WebLogic

Perform the following to delete a connector:

- 1 Log on to the WebLogic Server Console.
- 2 Navigate to ***My_Domain*** → **Deployments** → **Connector Modules**.
- 3 Click the delete icon next to the connector that you want to uninstall.
- 4 Click **Yes** to confirm the deletion.
- 5 Click **Continue**.

After deleting the connector, you can remove the Expect scripts as well. Remove the scripts from the directory on the Select Identity server where they were extracted (see [Installing Expect, inetutils, and the Scripts on page 11](#)).

On WebSphere

Complete the following steps to uninstall the connector on WebSphere:

- 1 Log on to the WebSphere Application Server Console.
- 2 Navigate to **Resources** → **Resource Adapters**.
- 3 Select the connector to uninstall.
- 4 Click **Delete**.
- 5 Click the **Save** link (at the top of the page).
- 6 On the Save to Master Configuraton dialog, click the **Save** button.

After deleting the connector, you can remove the Expect scripts as well. Remove the scripts from the directory on the Select Identity server where they were extracted (see [Installing Expect, inetutils, and the Scripts on page 11](#)).



Troubleshooting

The following information is provided to help you diagnose connectivity and configuration problems that you may encounter when using the connector to provision users on the resource. You may need to consult your system or web application administrator for detailed help.

- On the Select Identity server, if installed on a Windows system, ensure that Cygwin's `bin` directory is included in the Windows server's `PATH` environment variable.
- Verify that the path to Telnet is configured properly on the HP-UX 11i system. Use the UNIX command **`which telnet`** to find the path of Telnet. If the path is different than the path specified in the Expect scripts, use the path found on the HP-UX 11i system. You may want to specify the full path to Telnet in the scripts.
- Ensure that the Telnet daemon is configured and running on the target HP-UX 11i system. Use **`ps -ef | grep telnetd`** to determine if the daemon is running.
- Verify that Telnet allows for enough connections to handle provisioning requests. The number of connections depends on the number of connections allowed by the application server for the connector. To view

the connection configuration and connections on the application server, perform one of the following procedures:

On WebLogic:

To view the connection configuration:

- a** Log on to the WebLogic Server Console.
- b** Navigate to ***My_domain*** → **Services** → **JDBC** → **Connection Pools** → ***connection_pool***.

To monitor current connections:

- c** Navigate to ***My_domain*** → **Deployments** → **Connector Modules** → ***connector***.
- d** Click the **Monitoring** tab to view connections.

On WebSphere:

To view the connection configuration:

- a** Log on to the WebSphere Application Server Console.
- b** Click **Resources** → **Resource Adapters**.
- c** Click the connector.
- d** Click **J2C Connection Factories** in the Additional Properties table.

To monitor current connections, you must use the Tivoli performance viewer and click ***application_server*** → ***J2C_connection_pool*** .

Consult with your system or application server administrator for further help diagnosing problems related to connections that do not close, connections that time out, connections that cannot be opened, and so on.

- Depending on the system implementation and software versions, you may experience connectivity problems when the connector communicates with the HP-UX 11i system. If so, edit each script that includes the following:

```
set force_conservative 0 ;
```

Set the `force_conservative` property to **1**, as follows:

```
set force_conservative 1 ;
```

This forces Expect to pause (1/10th of second) before sending data. Some processes, such as Telnet, may ignore keystrokes if they are sent too quickly. Thus, the short delay prevents the keystroke from arriving too quickly, before Expect is prepared to receive it.