

# Reporter 3.6 Read Me



April 2005

© Copyright 2005 Hewlett-Packard Development Company, L.P.

The information contained herein is subject to change without notice.

The only warranties for HP products and services are set forth in the express warranty statements accompanying such products and services. Nothing herein should be construed as constituting an additional warranty. HP shall not be liable for technical or editorial errors or omissions contained herein.



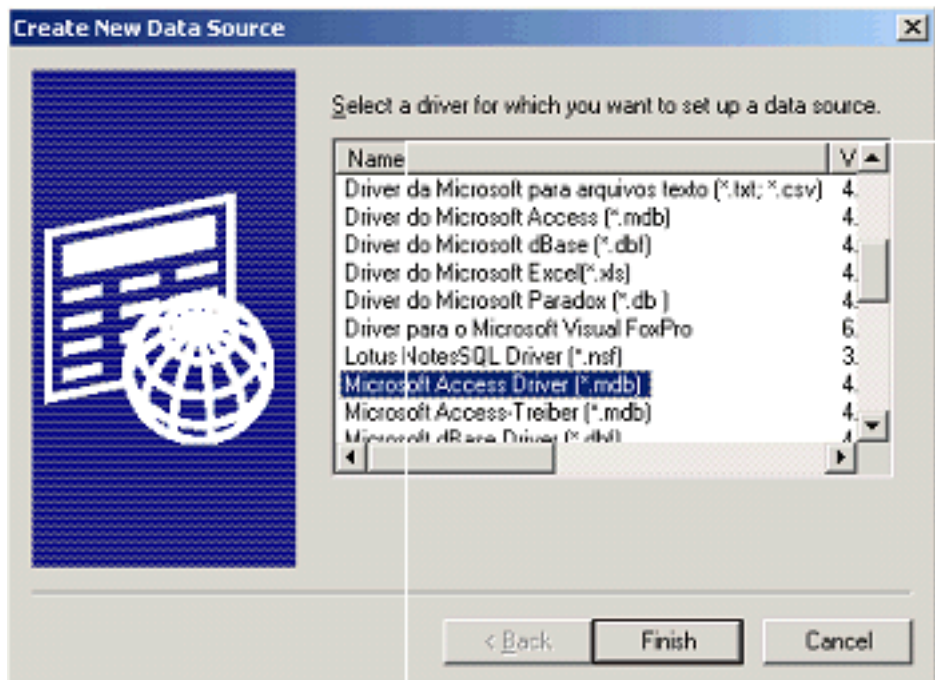
1	Installing Reporter 3.6 on an SQL Server in the Same Machine .....	3
2	Running Reporter and OVO on Separate Systems .....	7
	Configuring the OVO System .....	8
	Stop Reporter Service .....	8
	Configure IIS Settings .....	10
	Configure DSN Settings .....	12
	Configuring the Reporter System .....	18
	Installing Additional Reports .....	18
	Configure DSN Settings .....	18
	Configuring Reporter to Use the Newly Added DSN .....	25
	Configure the OVO Settings for Reporter .....	26
	Additional Steps .....	27
	Case 1 .....	28
	Case 2 .....	29
	Case 3 .....	30
3	Reporter 3.6 and OVO in Same Cluster .....	33



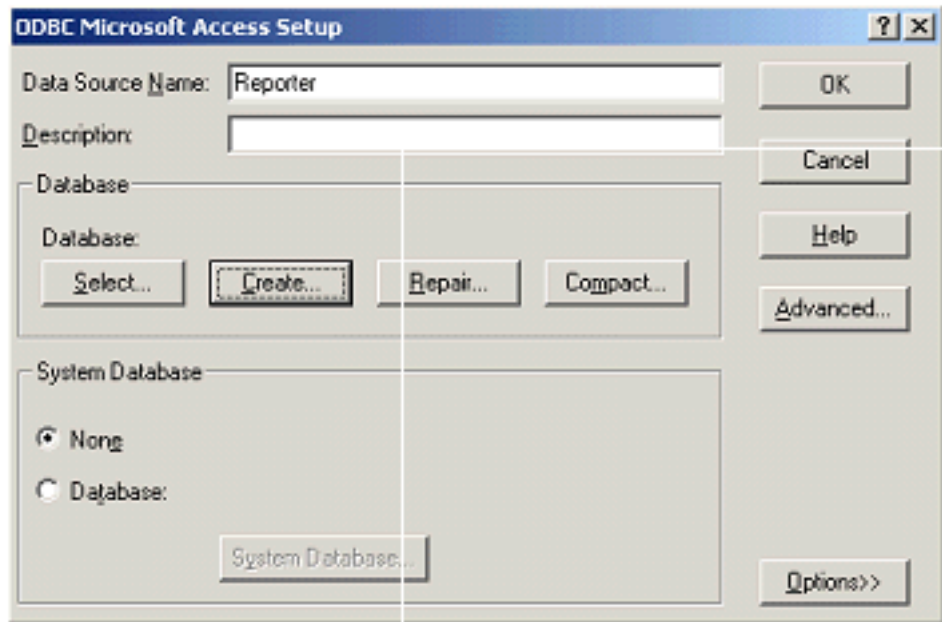
# 1 Installing Reporter 3.6 on an SQL Server in the Same Machine

To install Reporter 3.6 on an SQL Server on the same machine with OVOPS as instance name, do the following steps:

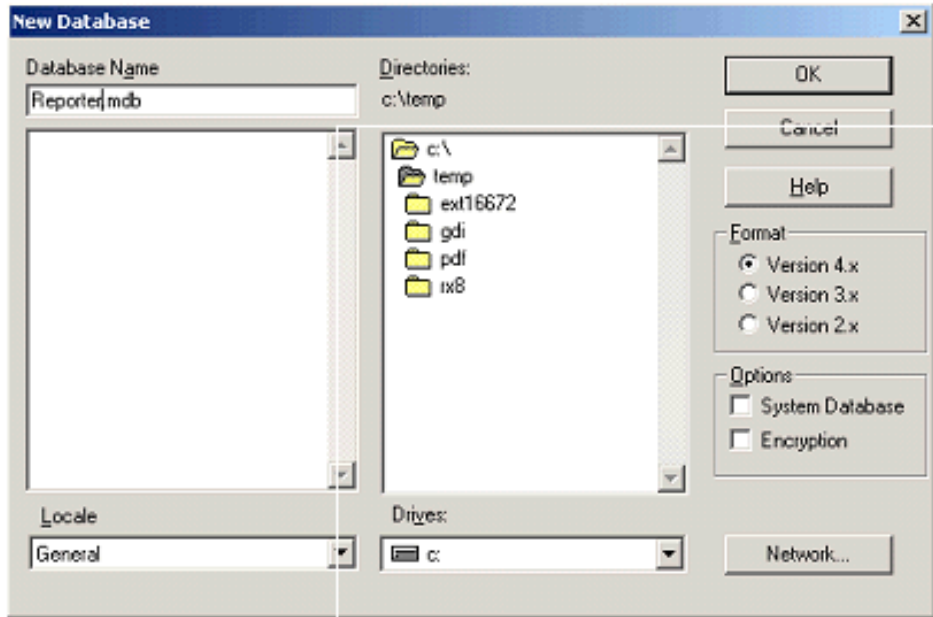
- 1 Rename the existing Reporter DSN (created during HP OpenView Operations for Windows 7.5 (OVO) / Reporter3.5 / OVIS installation) to Reporter\_OVOW 75.
- 2 Create a new DSN named Reporter using Microsoft Access Driver as explained.
- 3 Select the driver from the list of drivers displayed.



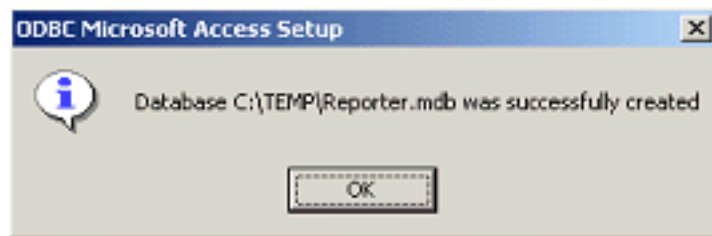
- 4 Enter **Reporter** as Data Source Name.



- 5 Click **Create a new access database** at any location and enter a database name. Click **OK**



- 6 Following success message appears. Click **OK**.



- 7 Start Reporter 3.6 installation.
- 8 Once the installation is completed delete or rename the Reporter DSN created using Access driver.
- 9 Now rename Reporter\_OVOW75 DSN back to Reporter.
- 10 Run **NewDB.exe**.





---

## 2 Running Reporter and OVO on Separate Systems

It is possible to integrate Reporter with remote OVO to collect managed node information and generate OVO reports.

- ▶ This configuration is not supported with OVO 7.21 (or older versions of the OVO) and Reporter 3.5 (or older version of Reporter.)

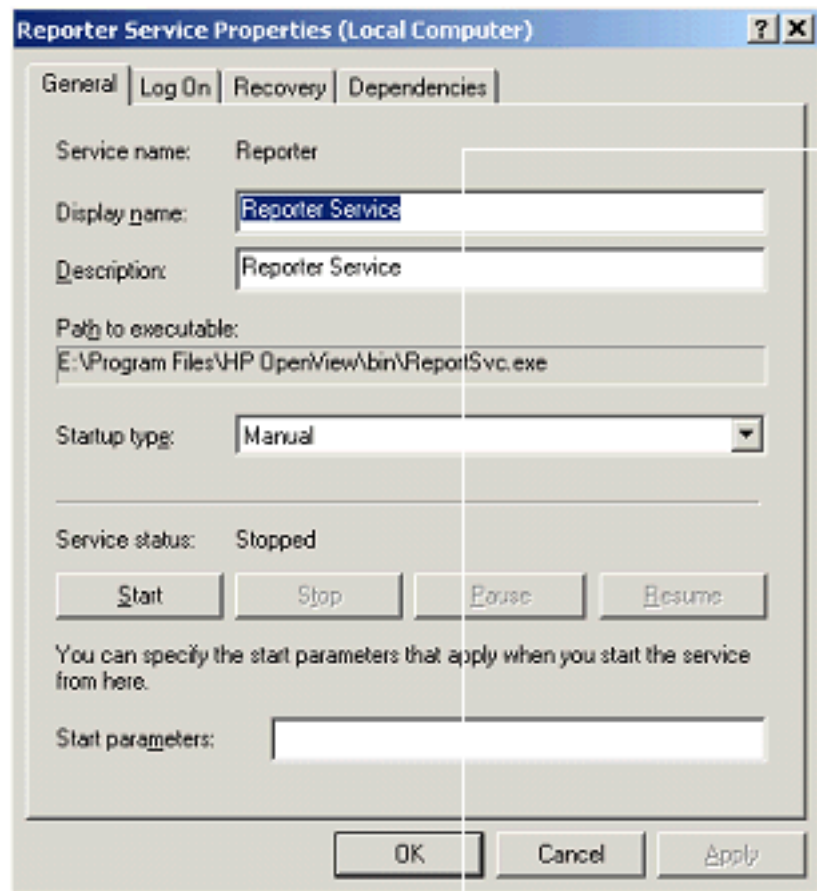
Follow the steps mentioned in the following sections to configure OVO and Reporter systems.

# Configuring the OVO System

## Stop Reporter Service

If OVO is not installed in a cluster, follow the steps below to stop Reporter Service.

- 1 Select the Reporter service using the **Start** menu, select **Settings > Control Panel > Administrative tools > Service**.
- 2 From the **Startup type** drop-down list box, select **Manual**.



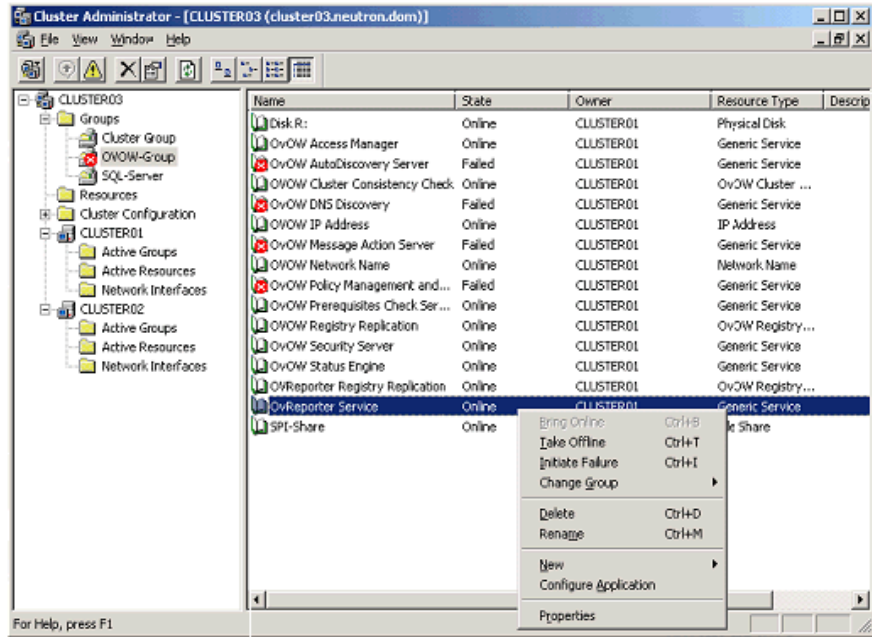
3 Click **Stop** to stop the Reporter Service.

If OVO is installed in a cluster, follow the steps below to stop Reporter Service.

4 From **Start** menu select **Settings > Control Panel > Administrator tools > Cluster Administrator**.

5 In Cluster Administrator console, select **<Cluster Name>\Groups\<your OVO-Group name>**.

6 Right-click **OvReporter Service**.



7 Click **Delete**.

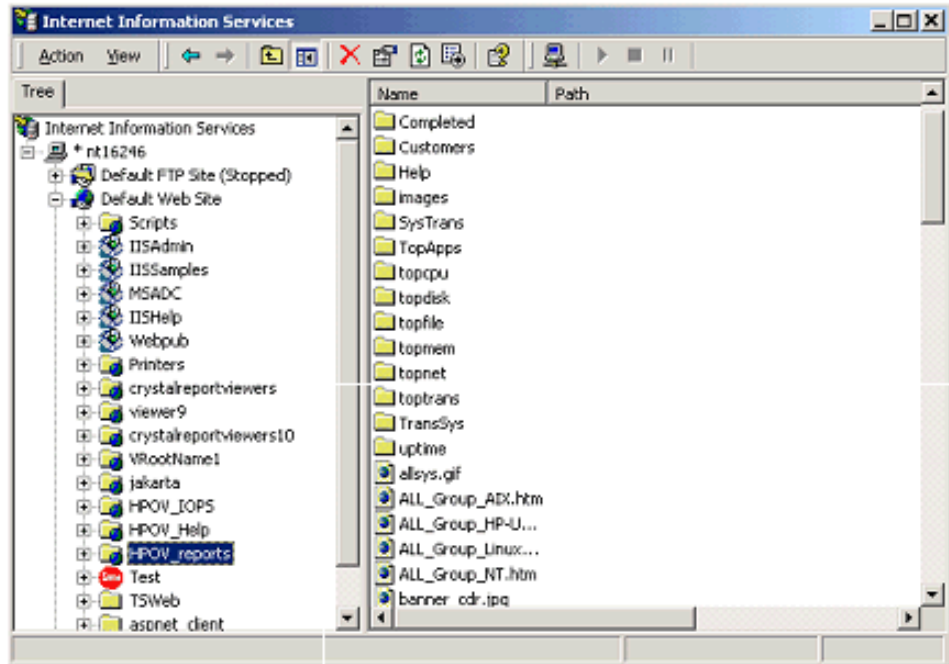


If you take the resource offline, the entire group will be considered *Partially offline* and the OVO GUI will report that The Operations Management Server has gone offline.

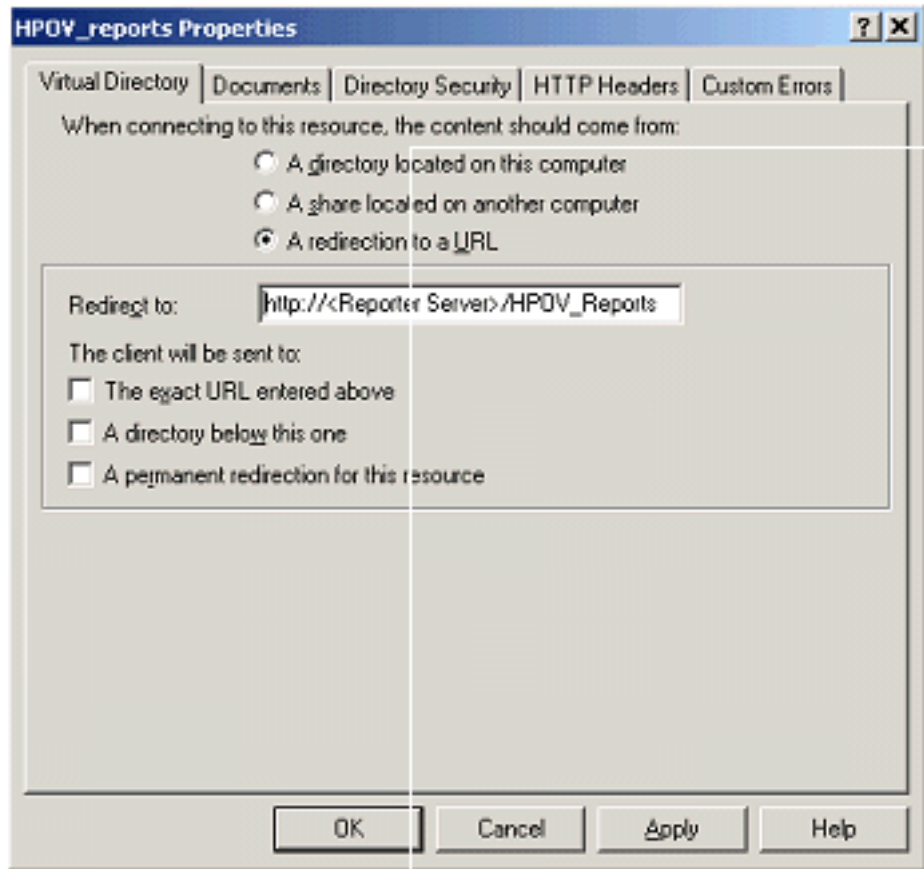
## Configure IIS Settings

Follow the steps below to configure IIS:

- 1 Open IIS administration console by selecting **Start-> Settings->Control Panel->Administrative Tools->Internet Information Services (IIS) Manager**.
- 2 Select **HPOV\_reports** under Default Web Site.



- 3 Right-click **HPOV\_reports**, select **Properties**.
- 4 Click **Virtual Directory** tab. Select **A redirection to a URL** option.



5 Enter **http://<Reporter Server>/HPOV\_Reports**

[Reporter Server is the IP Address or the machine name where Reporter is installed]

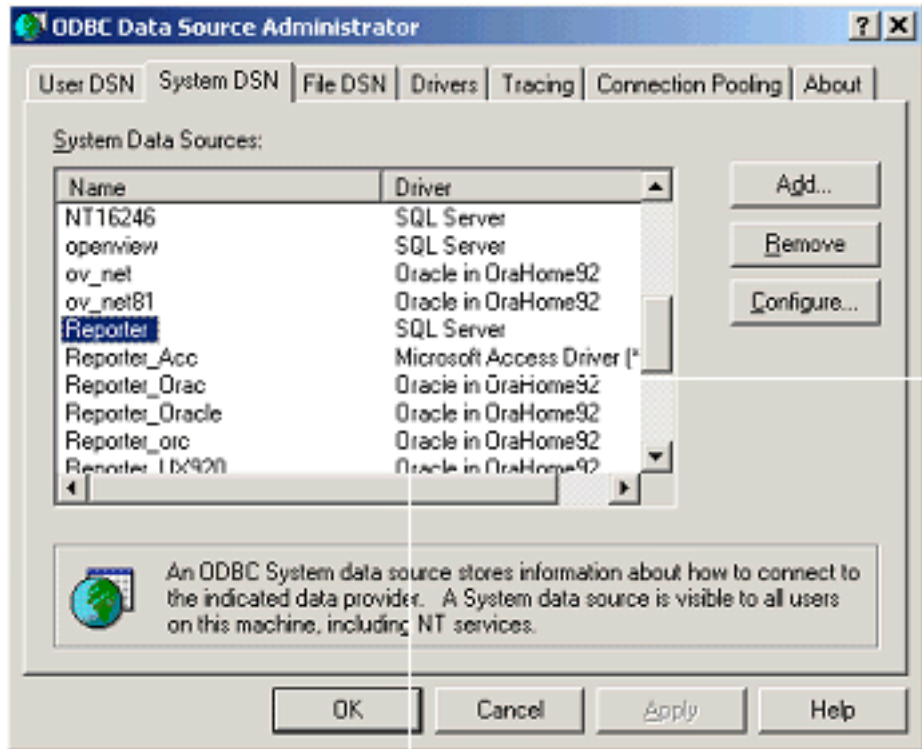
If Reporter is running in a cluster, use the virtual server name for Reporter Server.



If OVO is installed in a cluster, execute the above steps on each of the nodes in the cluster.

## Configure DSN Settings

- 1 From the **Start** menu, select **Settings > Control Panel > Administrative Tools > Data sources (ODBC)**.
- 2 Select **System DSN** tab. Select **Reporter** datasource and click **Configure...**



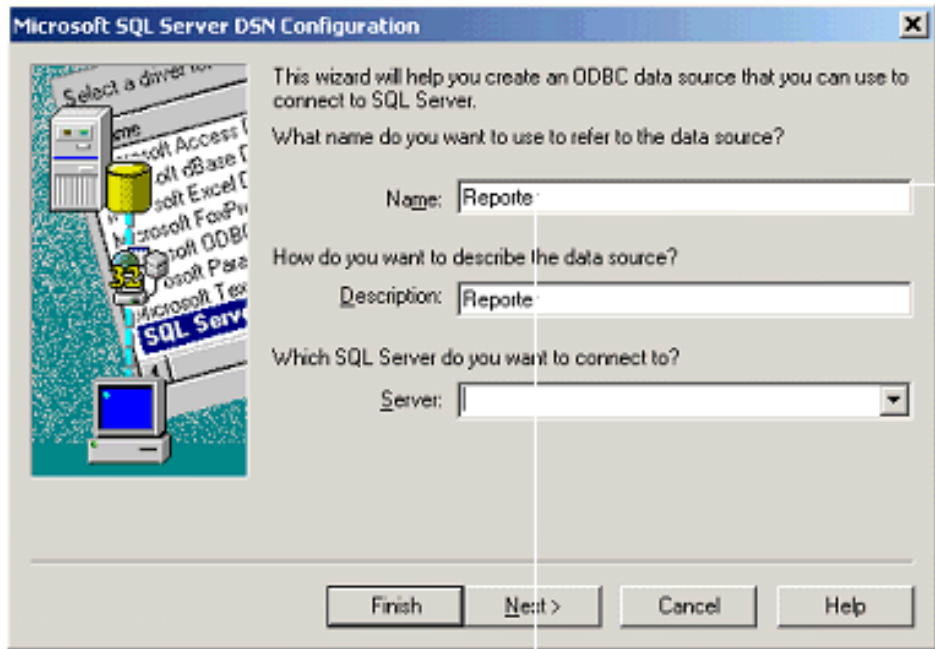
- 3 Enter

Name: *Reporter*

Description: *Reporter*

Server: *<SQL Server Machine name>\<SQL Server Instance used by Reporter application>*

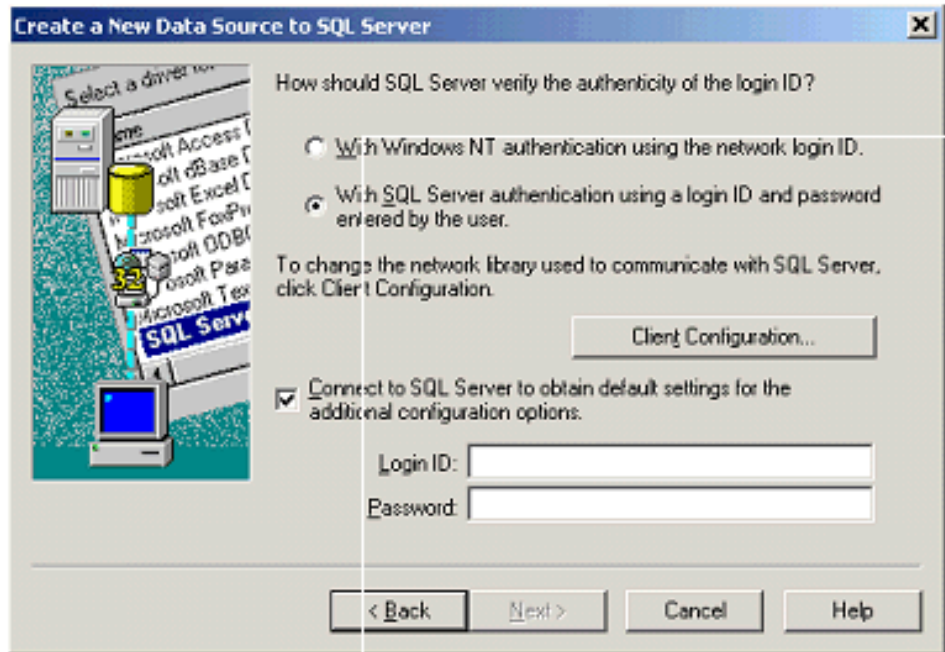
[If the SQL Server is installed in a cluster, the virtual server name should be entered as SQL Server Machine name.]



- 4 Click **Next**.
- 5 Select **With SQL Server authentication using a login ID and password entered by user**. Also check on **Connect to SQL Server to obtain default settings for the additional configuration options**.

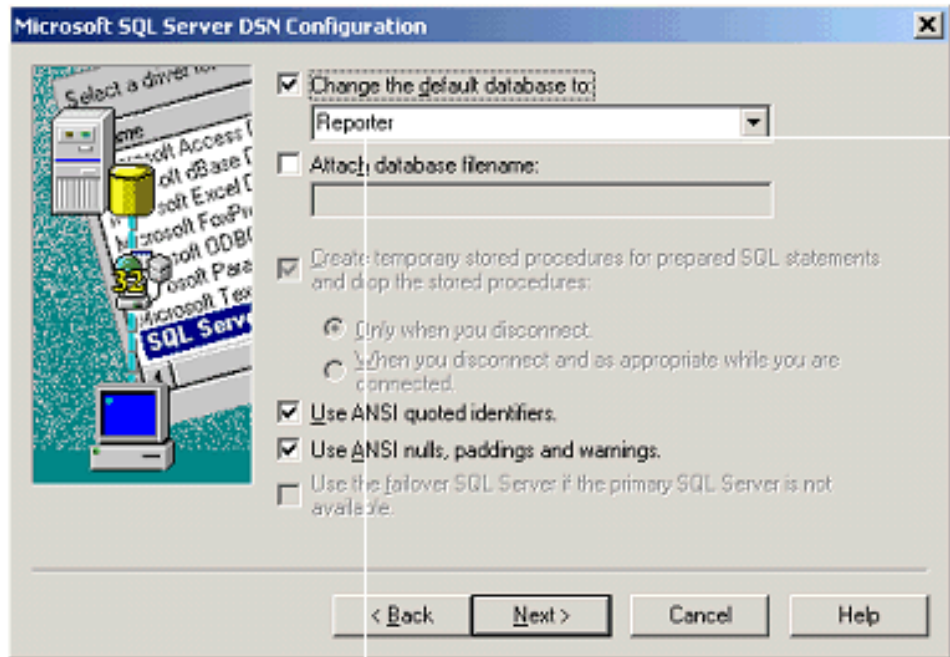
Enter Login ID: *openview*

Password: *openview*

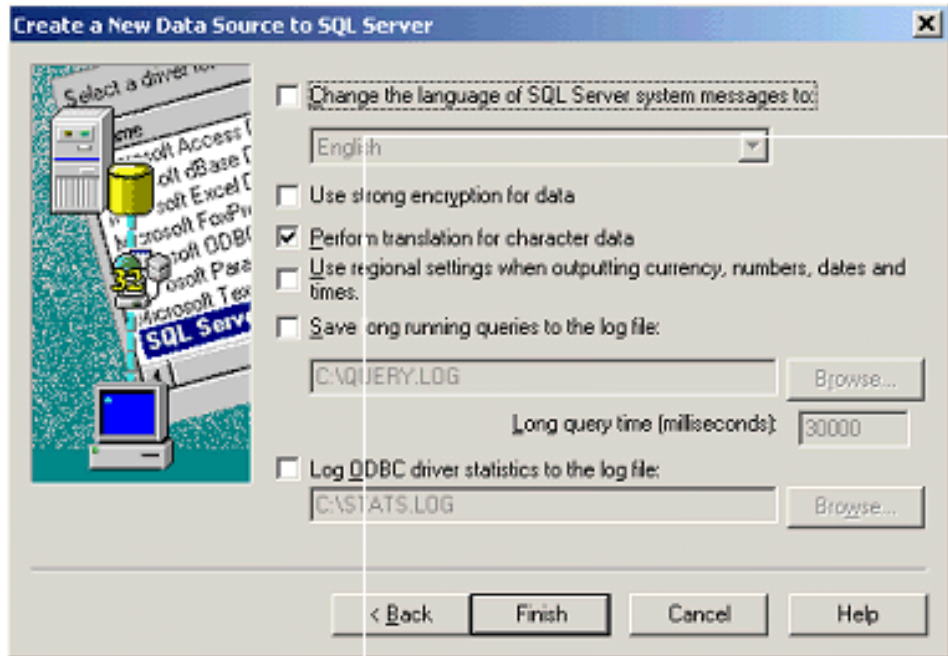


- 6 Click **Next**.
- 7 Select **Change the default database to:** and choose **Reporter** from the drop down list box.
  - Select **Use ANSI quoted identifiers**.
  - Select **Use ANSI nulls, paddings and warnings**.

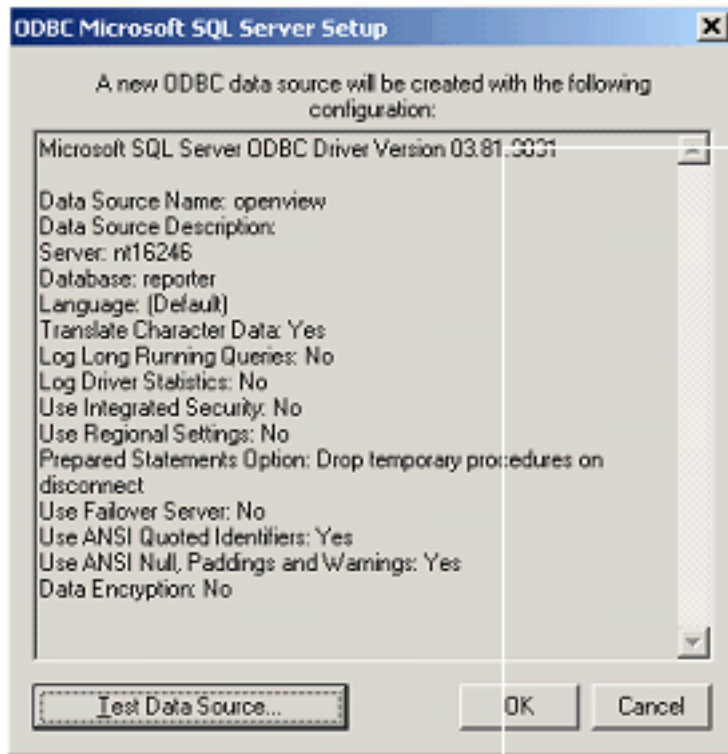




- 8 Click **Next**.
- 9 Select **Perform translation for character data only** in **Create a New Data Source to SQL Server** dialog.



- 10 Click **Finish**.
- 11 Click **Test Data Source** to verify that the connection is working.



12 Click **OK**.



If OVO is installed in a cluster, the above steps have to be executed on each of the nodes in the cluster.

# Configuring the Reporter System

## Installing Additional Reports

Install the OVO packages from the OVO CD containing the reports you want to use.

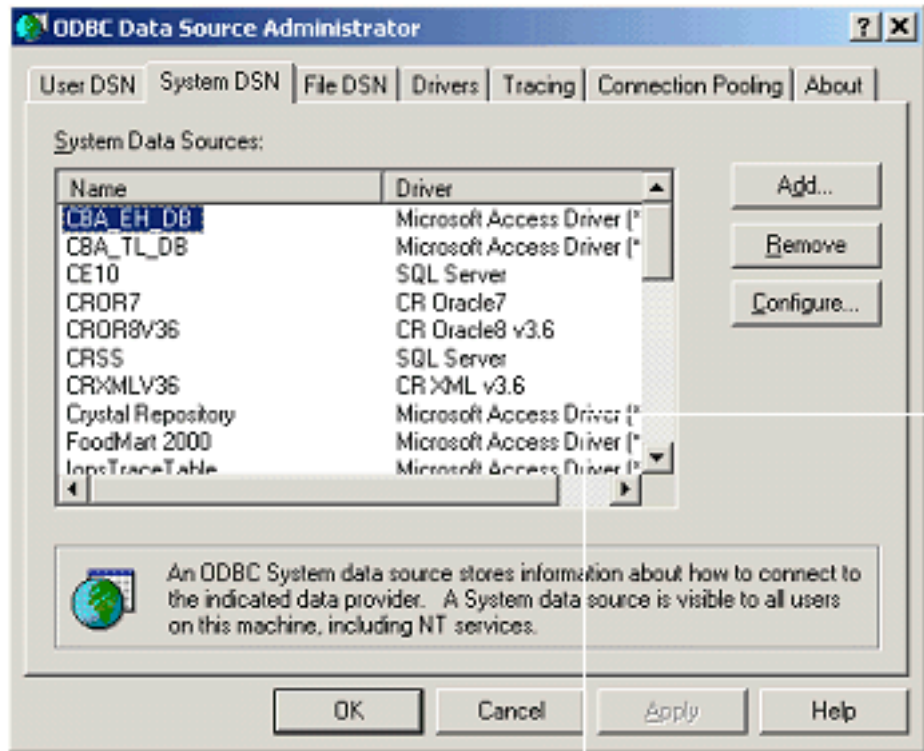
You can find the following OVO packages in the OVO CD:

- Packages\SPIs Reports Packages\WINOSSPI-Reporter.msi (contains the reports of the SPIs for Windows)
- Packages\FoundationCore\OVServiceReports\HP OpenView operations for Windows Service Reports.msi (contains the OVO reports)

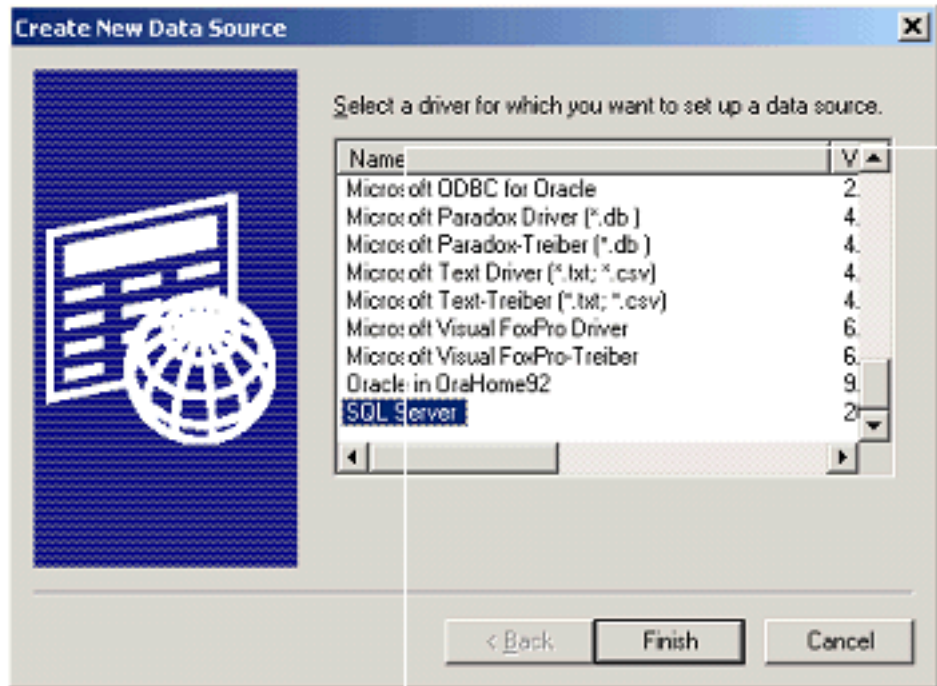
## Configure DSN Settings

- 1 From the **Start** menu, select **Settings > Control Panel >Administrative Tools >Data sources (ODBC)**.

- 2 Select **System DSN** tab and click **Add...**



- 3 Select **SQL Server**.



4 Click **Finish**

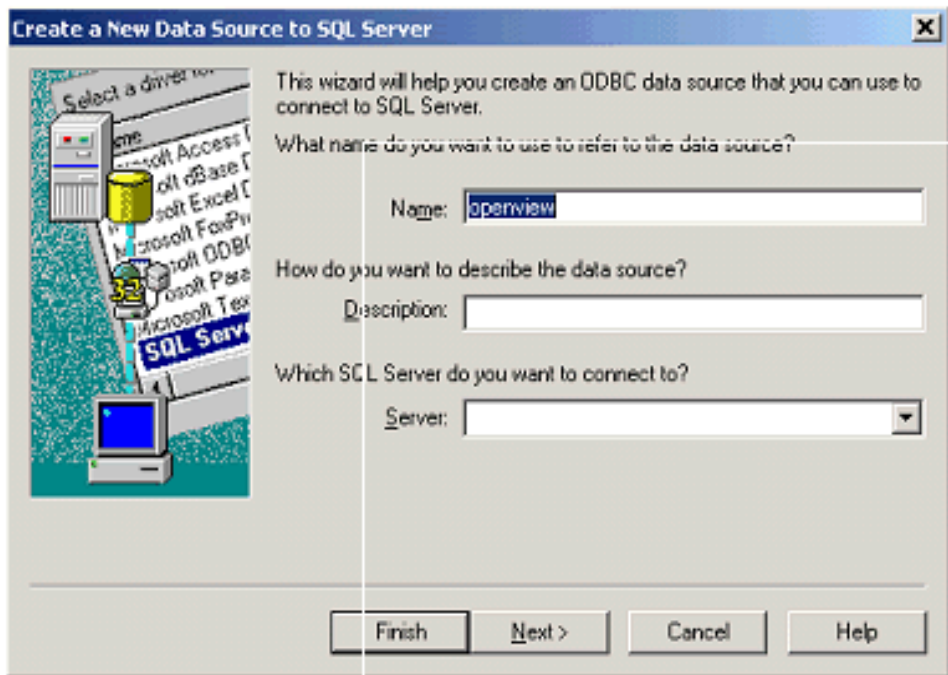
5 Enter :

Name: *openview*

Description: *OVO Management Server*

Server: *<Name or IP of OVO server>/OVOPS*

[If OVO Management server is installed in a cluster, the virtual server name or IP should be entered.]

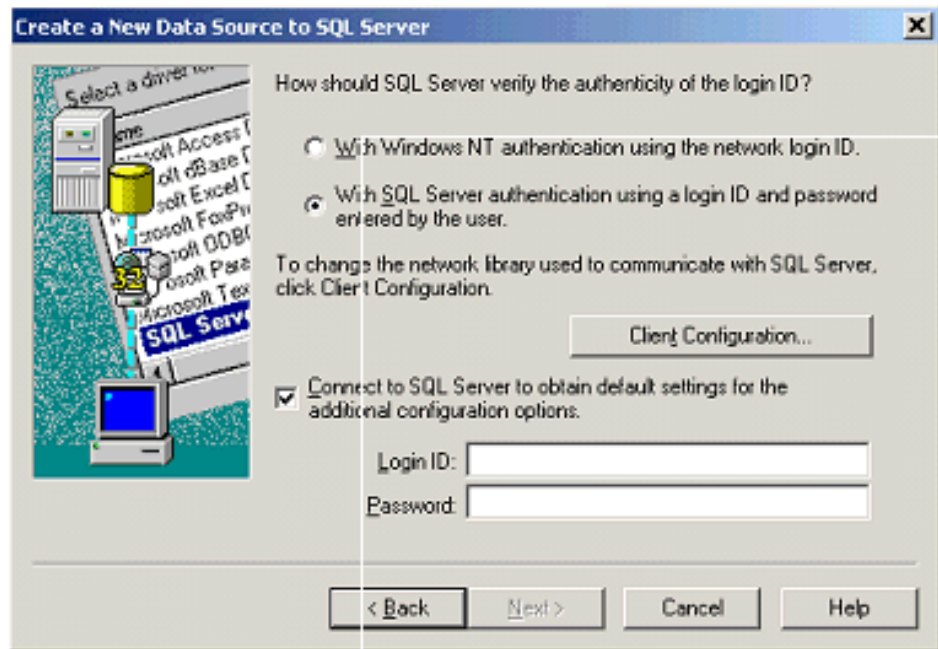


- 6 Click **Next**.
- 7 Select **With SQL Server authentication using a login ID and password entered by user**.

Also check on **Connect to SQL Server to obtain default settings for the additional configuration options**.

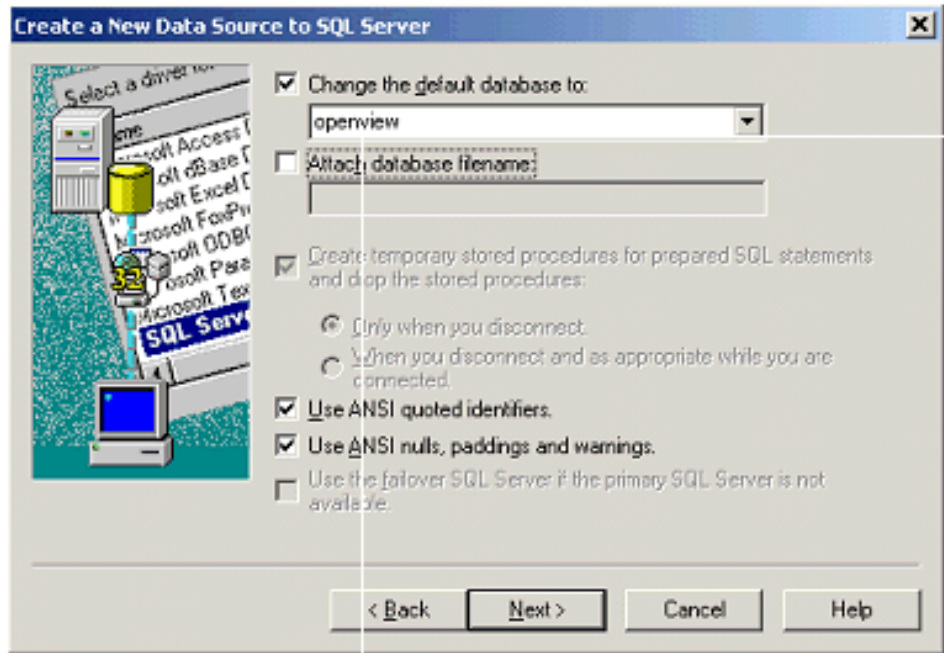
Enter Login ID: *ovdb\_user*

Password: *user*



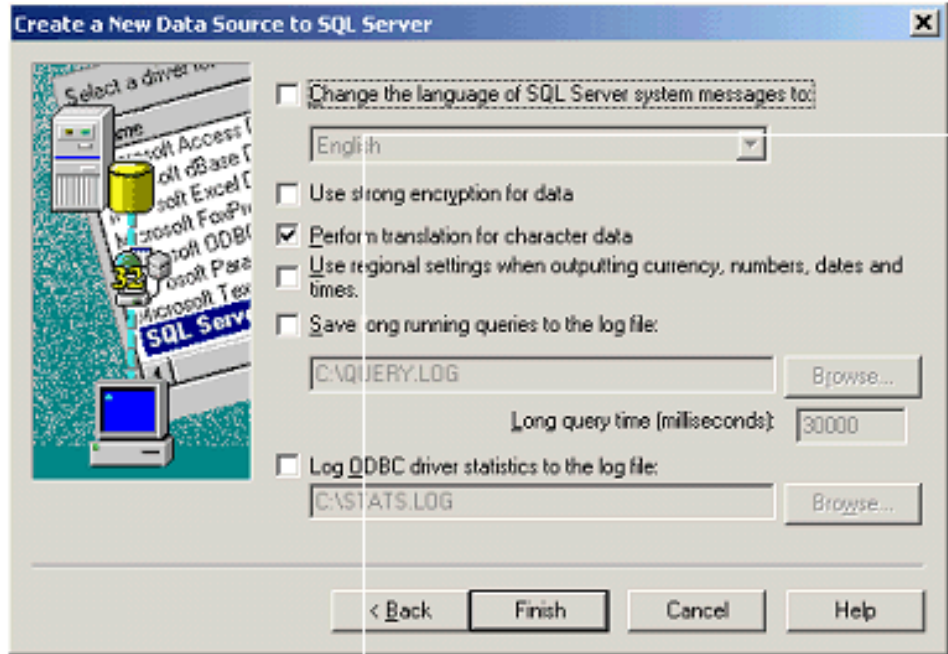
- 8 Click **Next**.
- 9 Select **Change the default database to:** and choose **Openview** from the drop down list box.
  - Select **Use ANSI quoted identifiers**.
  - Select **Use ANSI nulls, paddings and warnings**.



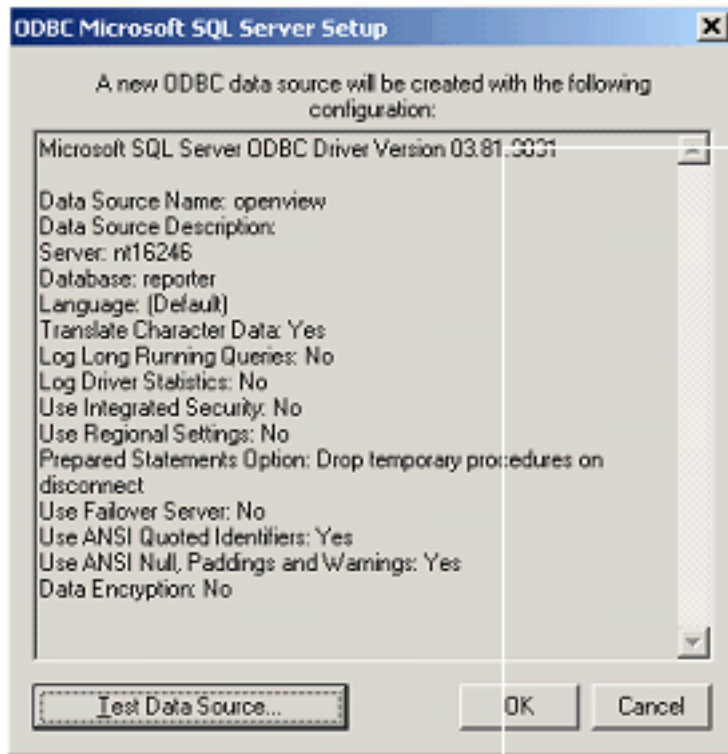


10 Click **Next**.

11 Select **Perform translation for character data only** in **Create a New Data Source to SQL Server** dialog.



- 12 Click **Finish**.
- 13 Click **Test Data Source** to verify that the connection is working.



14 Click **OK**.

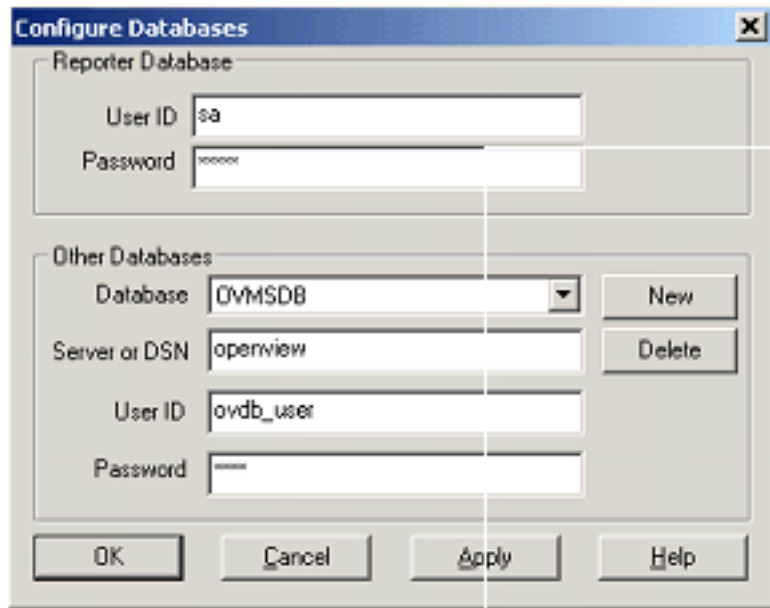


If Reporter is installed in a cluster, the above steps have to be executed on each of the nodes in the cluster.

## Configuring Reporter to Use the Newly Added DSN

After creating the DSN openview successfully, configure Reporter GUI to use the DSN as specified in the steps below:

- 1 Select **Reporter GUI > File > Configure > Databases**

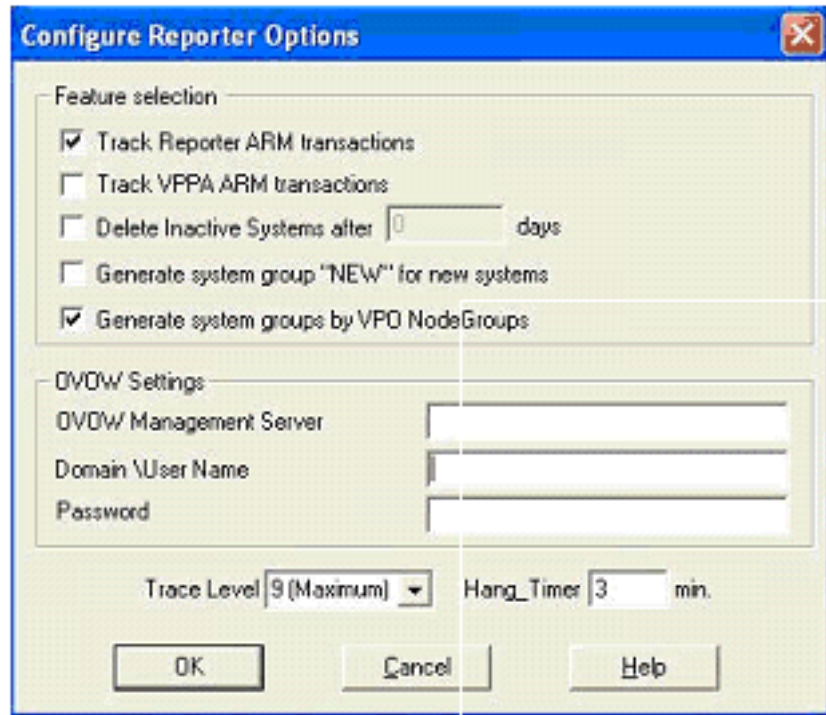


- 2 In the **Configure Databases** dialog, do not change **User ID** and **Password** in **Reporter Database** section
- 3 In **Other Databases** section:
  - Select **Database**: *OVMSDB* (If not found in the drop down list, click **New** and create).
  - **Server or DSN**: *openview*
  - **User ID**: *ovdb\_user*
  - **Password**: *user*
- 4 Click **Apply**.

## Configure the OVO Settings for Reporter

- 1 Select **Reporter GUI > File > Configure > Options** and specify the **OVOW Settings** parameters.

- 2 Enter the *OVO* system name as **OVOW Management Server**, a user name as **Domain \User Name** (with or without domain) and the Password as **Password** in the **OVOW Settings**.



- 3 Select **Reporter GUI > Left Pane > Schedule** and then right click and select **Add Schedule** to add **Discovery\_Neutron** to reporter scheduler.



The user name entered in the **OVOW Settings** panel must be part of the Administrators, HP-OVE-ADMINS, or HP-OVE-OPERATORS user group on the OVO management server system.

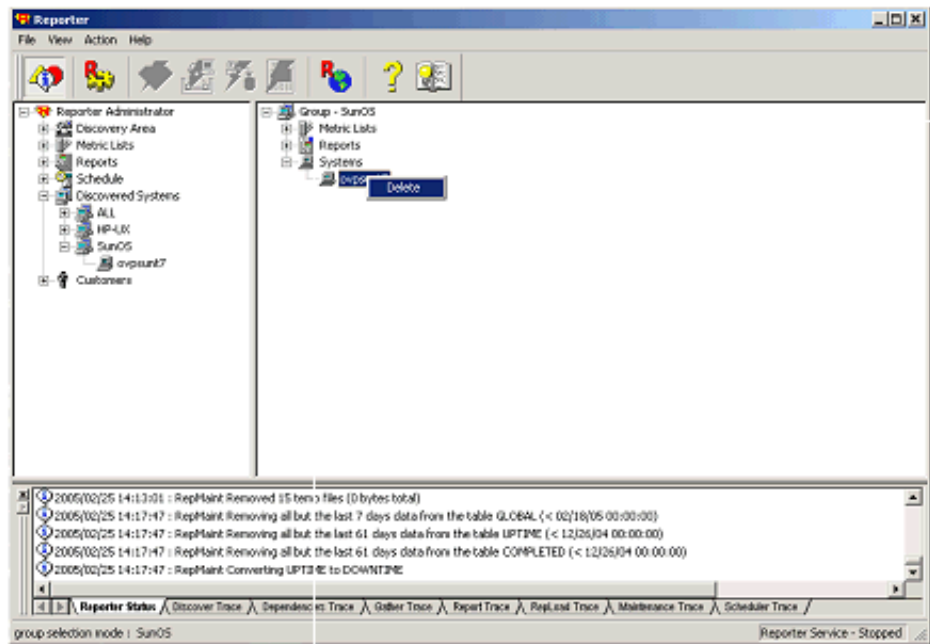
## Additional Steps

Depending on the purpose for which Reporter is used, few configuration changes need to be completed at the machine where Reporter is running:

## Case 1

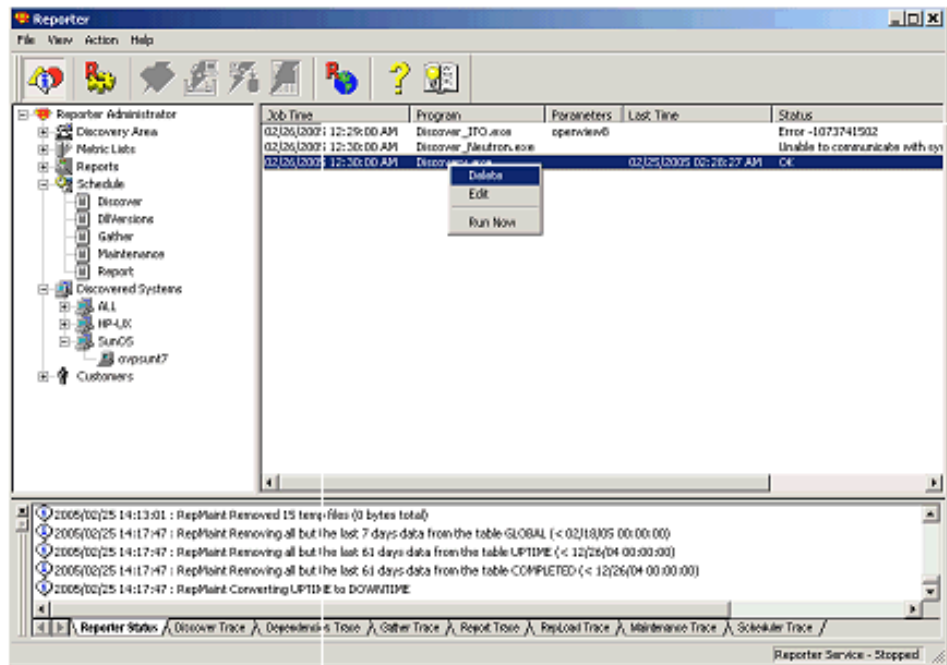
If Reporter is used only to report on nodes managed by OVO, do the following steps:

- 1 Remove all the systems discovered by Reporter. Open Reporter GUI and select **Reporter Administrator->Discovered Systems-><ALL**. Press **F5** or select **View->Refresh**. Select the systems that appear on the right pane.
- 2 Right click on systems and select **Delete**.
- 3 To remove the scheduled action that discovers these systems, access **Reporter Administrator->Schedule->Discover**. Press 'F5' or Select **View->Refresh**.



- 4 On the right pane, select the job with program name as **Discovery.exe**.
- 5 Right click and select **Delete**.

After the next discovery the nodes managed by OVO will appear in the Reporter GUI and will be used to generate the reports.



## Case 2

If Reporter is used to report on nodes discovered by Reporter [using **Discovery.exe**] and on nodes managed by OVO [delivered by **Discover\_Neutron.exe**] and there are no clustered servers in the environment. Then follow the steps listed below:

- 1 Open Report GUI. Select **Reporter Administrator > Schedule > Discover**.
- 2 Click **F5** or select **View > Refresh**.
- 3 Ensure that both **Discover\_Neutron.exe** and **Discovery.exe** are scheduled.

[Look for these programs in the list of scheduled activities under **Reporter Administrator->Schedule->Discover**]

## Case 3

If Reporter is used to report on nodes discovered by Reporter [using **Discovery.exe**] and on nodes managed by OVO [delivered by **Discover\_Neutron.exe**] and there are clustered servers in the environment then follow the steps listed below:

- 1 Remove **discovery.exe** from the list of scheduled activities in Reporter GUI. [as described in steps (d), (e) and (f) under [Case 1.](#)]
- 2 Open Reporter GUI. Select **Reporter Administrator->Schedule->Discover**. Right click and select **Add schedule**.
- 3 In **Add Schedule Entry** dialog, do the following:
  - a **Job Date** : Enter the date on which Discovery has to be scheduled.
  - b **Job Time**: Enter the time when the scheduled program should start execution.
  - c **Program Name**: Select **Discovery** from the list box.
  - d **Parameters**: Enter b <filename>. <Filename> refers to a text file that consists the list of nodes that need to be discovered.
  - e **Job Reset**: Select **Day** from list box.



- f **Run Time:** Enter an integer in minutes that indicates the expected time that discovery will complete.

**Add Schedule Entry**

Job Date: 2 /25/2005

Job Time: 12:30:00 AM

Program Name: Discovery

Parameters: -b "c:\temp\filename.txt"

Job Reset: Day

Run Time: 240 Minutes

Buttons: Add, Close, Help

- g Ensure that **Discover\_Neutron** is scheduled.

[Look for **Discover\_Neutron** in the list of scheduled activities under **Reporter Administrator->Schedule->Discover**]



---

## 3 Reporter 3.6 and OVO in Same Cluster

OVO and Reporter must be in the same cluster group if you want to install them on the same cluster. On a same cluster, you must install OVO before installing Reporter.



The OVO installation fails if you install Reporter before installing OVO in the same cluster.

