

Astra® QuickTest™  
*Installation Guide*  
Version 5.0



MERCURY INTERACTIVE

## Astra QuickTest Installation Guide

© Copyright 2000 by Mercury Interactive Corporation

All rights reserved. All text and figures included in this publication are the exclusive property of Mercury Interactive Corporation, and may not be copied, reproduced, or used in any way without the express permission in writing of Mercury Interactive. Information in this document is subject to change without notice and does not represent a commitment on the part of Mercury Interactive.

Mercury Interactive may have patents or pending patent applications covering subject matter in this document. The furnishing of this document does not give you any license to these patents except as expressly provided in any written license agreement from Mercury Interactive.

WinRunner, XRunner, LoadRunner, TestDirector, TestSuite, WebTest, and Astra are registered trademarks of Mercury Interactive Corporation in the United States and/or other countries. Astra SiteManager, Astra SiteTest, Astra QuickTest, Astra LoadTest, Topaz, RapidTest, QuickTest, Visual Testing, Action Tracker, Link Doctor, Change Viewer, Dynamic Scan, Fast Scan, and Visual Web Display are trademarks of Mercury Interactive Corporation in the United States and/or other countries.

This document also contains registered trademarks, trademarks and service marks that are owned by their respective companies or organizations. Mercury Interactive Corporation disclaims any responsibility for specifying which marks are owned by which companies or organizations.

If you have any comments or suggestions regarding this document, please send them via e-mail to [documentation@mercury.co.il](mailto:documentation@mercury.co.il).

Mercury Interactive Corporation  
1325 Borregas Avenue  
Sunnyvale, CA 94089 USA

---

## Table of Contents

Before You Install .....	1
Registering Your Copy of Astra QuickTest .....	1
System Requirements .....	2
Installing Astra QuickTest.....	3
Uninstalling Astra QuickTest .....	13

## Astra QuickTest Installation Guide

---

# Before You Install

Welcome to Astra QuickTest, Mercury Interactive's functional testing tool for Web applications using Windows 95, Windows 98, Windows 2000, and Windows NT 4.0. This guide describes everything you need to know about how to install Astra QuickTest on a standalone computer.

## Registering Your Copy of Astra QuickTest

Register your copy of Astra QuickTest to become a licensed user with all rights and privileges. Registered users can access technical support and information on all Mercury Interactive products, and are eligible for updates and upgrades.

To register your copy of Astra QuickTest, fill out the Mercury Interactive Software Registration card.

- If you are in the United States, fill out the USA Owners portion of the card. Send the card to the Sunnyvale, California address printed on the card. No postage is necessary.
- If you are outside the United States, fill out the non-USA portion of the registration card and mail it to the appropriate international address using correct postage.

If your address changes, notify Mercury Interactive or your local representative, so that you can continue to receive product information and updates.

---

**Note:** You can also register your copy of Astra QuickTest on Mercury Interactive's Customer Support site (<http://support.mercuryinteractive.com>).

---

## System Requirements

In order to successfully run Astra QuickTest, you need the following minimum system requirements:

<b>Computer/Processor</b>	An IBM-PC or compatible with a Pentium® 166 MHz or higher microprocessor
<b>Operating System</b>	Windows® 95, Windows® 98, Windows® 2000, Windows NT® 4.0
<b>Memory</b>	Minimum 32 MB RAM
<b>Free Hard Disk Space</b>	Minimum 75 MB
<b>Browser</b>	Internet Explorer 4.01 SP1 to 5.5 (required), Netscape Navigator 4.06 and higher (optional)

---

# Installing Astra QuickTest

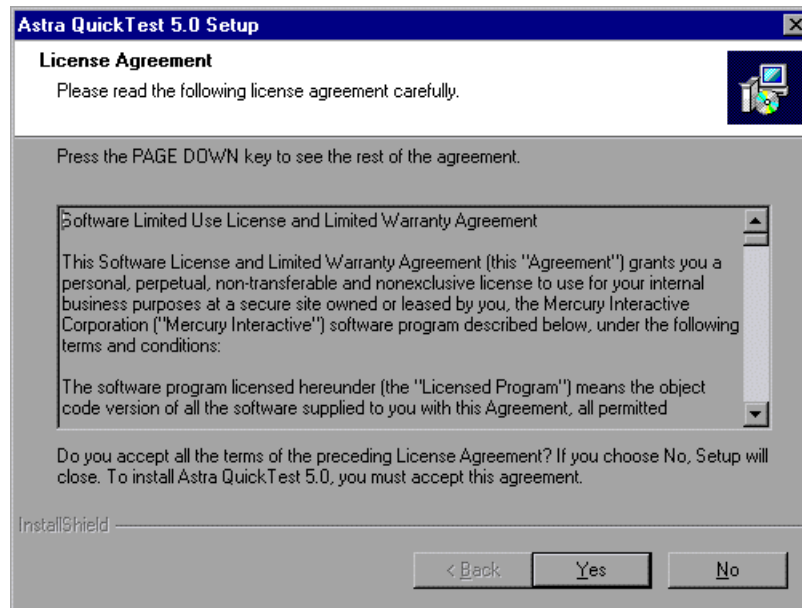
Your Astra QuickTest CD-ROM includes a setup program that guides you through the installation process.

To install Astra QuickTest on your computer:

- Insert the CD-ROM into the CD-ROM drive. If the CD-ROM drive is on your local machine, the Astra QuickTest Setup window opens. If you are installing from a network drive, connect and browse to it and double-click *autorun.exe* in the root directory of the CD-ROM. If you want to view the Readme file, click Release notes.
- If you want to open the Astra Try and Buy site (<http://www.astratryandbuy.com>), click Product information.
- If you want to open the contact information page on Mercury Interactive's Web site ([http://www.mercuryinteractive.com/contact\\_us](http://www.mercuryinteractive.com/contact_us)), click Contact Mercury Interactive.
- If you want to open Mercury Interactive's Customer Support Web site (<http://support.mercuryinteractive.com>), click Support.
- If you want to view the contents of the Astra QuickTest CD-ROM, click Browse CD.
- If you want to exit the Astra QuickTest Setup window, click Exit.

Click Install Astra QuickTest to install Astra QuickTest.

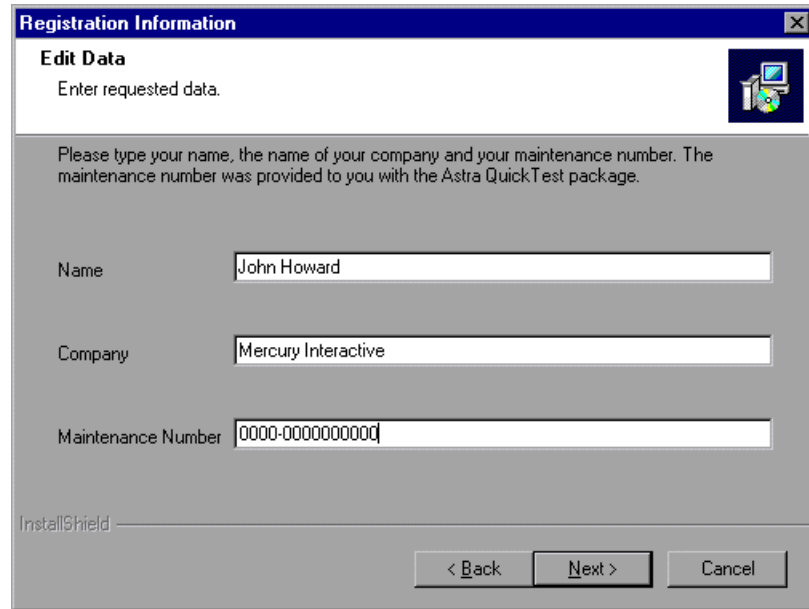
- 1 The Astra QuickTest setup program starts, and the License Agreement screen opens. Read the agreement.



To install Astra QuickTest , you must accept the terms of the license agreement by clicking **Yes**. If you click **No**, the setup program will close.



- 2 In the Registration Information screen, type your name, the name of your company, and an Astra QuickTest maintenance number. Your maintenance number can be obtained from the e-mail you received from Mercury Interactive Customer Support.

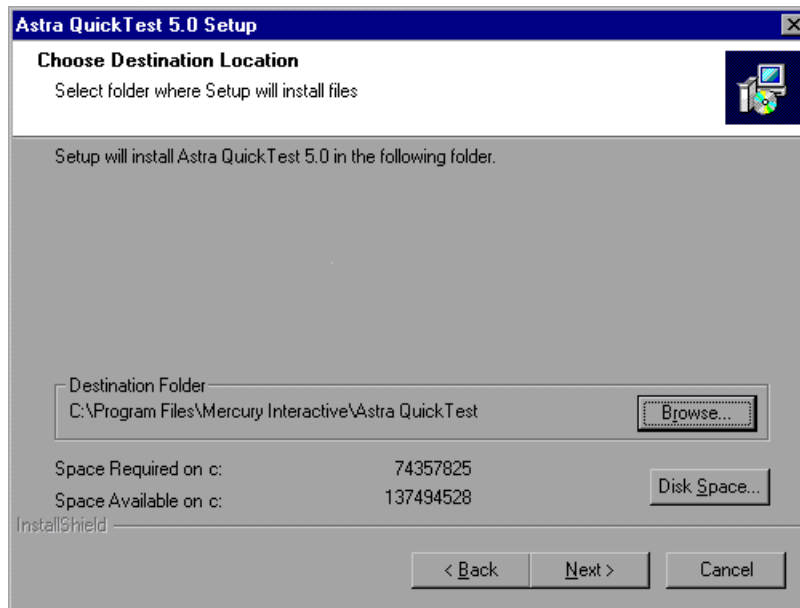


The image shows a Windows-style dialog box titled "Registration Information". It has a blue title bar with a close button (X) in the top right corner. Below the title bar, there is a section titled "Edit Data" with a small icon of a computer and a CD. The text "Enter requested data." is displayed. Below this, a message states: "Please type your name, the name of your company and your maintenance number. The maintenance number was provided to you with the Astra QuickTest package." There are three text input fields: "Name" with the value "John Howard", "Company" with the value "Mercury Interactive", and "Maintenance Number" with the value "0000-0000000000". At the bottom left, the text "InstallShield" is visible. At the bottom right, there are three buttons: "< Back", "Next >", and "Cancel".

Click Next to proceed.

- 3 Click Yes to confirm the registration information.

- 4 In the **Choose Destination Location** screen, choose the location where you want to install Astra QuickTest.

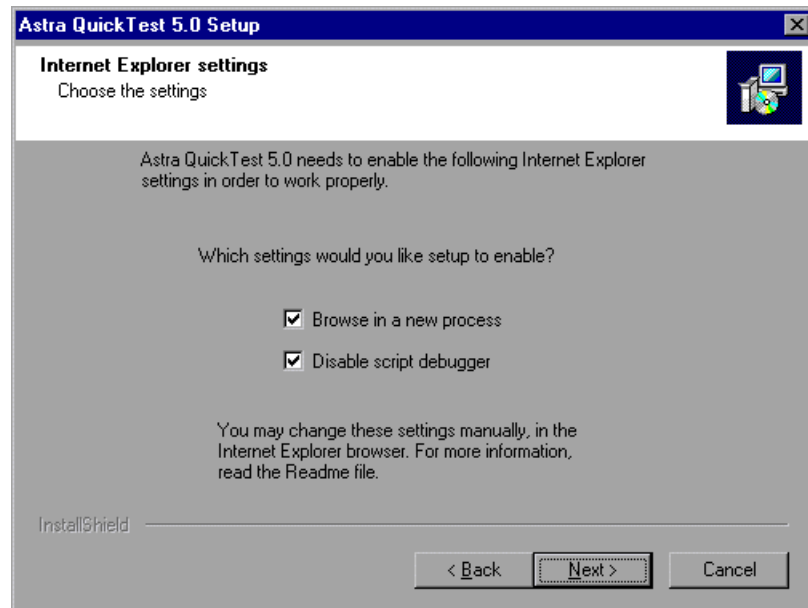


To select a different location, click **Browse**, choose a folder, and then click **OK**.

You should install Astra QuickTest to a drive with at least 75 MB of free disk space.

Click **Next** to proceed.

- 5 In the Internet Explorer settings, select the settings that you want Setup to enable for you.



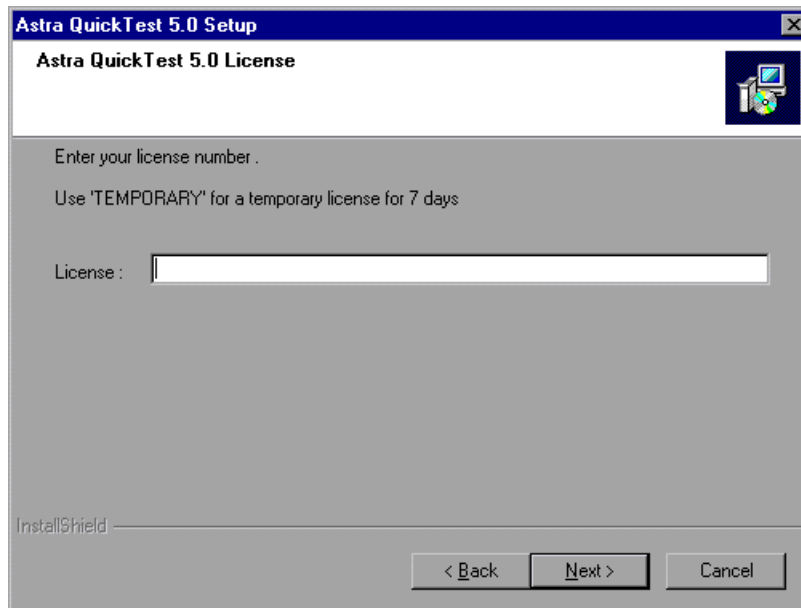
If you choose not to enable these settings during setup, you should enable the settings manually in your Internet Explorer browser. Click Next to proceed.

---

**Note:** In Internet Explorer 5.01 and higher, the Browse in a new process setting is automatically enabled and cannot be changed.

---

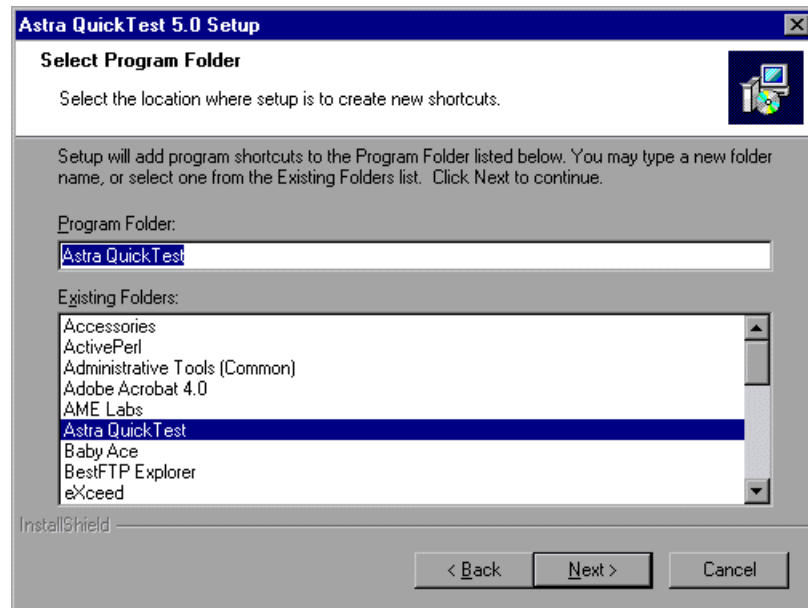
- 6 In the Astra QuickTest 5.0 License screen, type your licence number. Your licence number can be obtained from the e-mail you received from Mercury Interactive Customer Support.



Click Next to proceed.

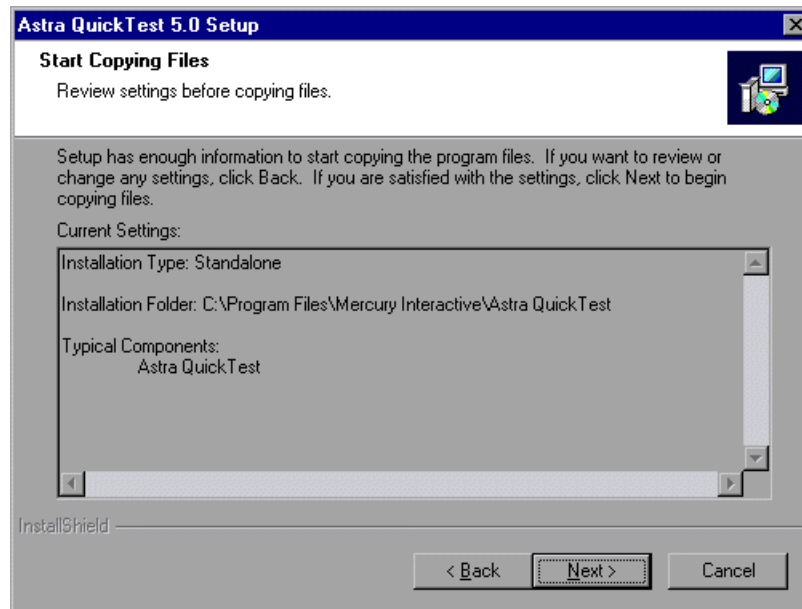
If you are using a temporary license, an information dialog box instructs you to contact Mercury Interactive Customer Support for a permanent license. Click OK.

- 7 In the Select Program Folder screen, specify a program folder for the Astra QuickTest icons, or accept the default folder, Astra QuickTest.



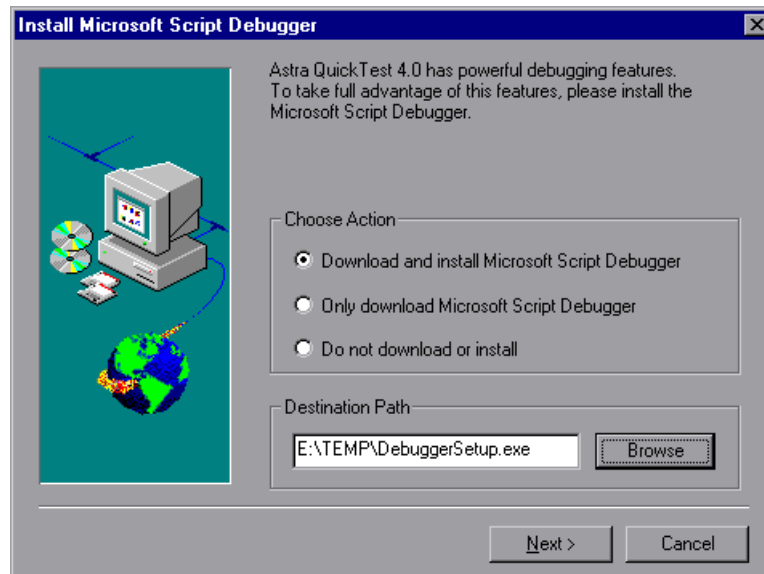
Click Next to proceed.

- 8 In the Start Copying Files screen, review the settings you selected.



To change your settings, click Back. To confirm the settings, click Next.

- 9 If the Microsoft Script Debugger is not installed on your machine, the **Install Microsoft Script Debugger** screen opens. You can specify whether or not to download and install the Microsoft Script Debugger to utilize Astra QuickTest's debugging features.

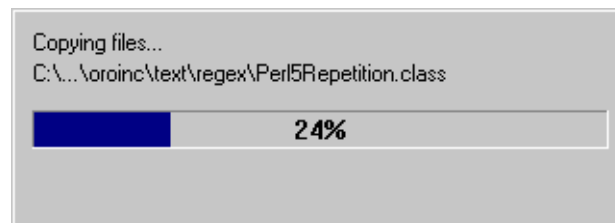


Choose an option. By default, the option to download and install Microsoft Script Debugger is selected.

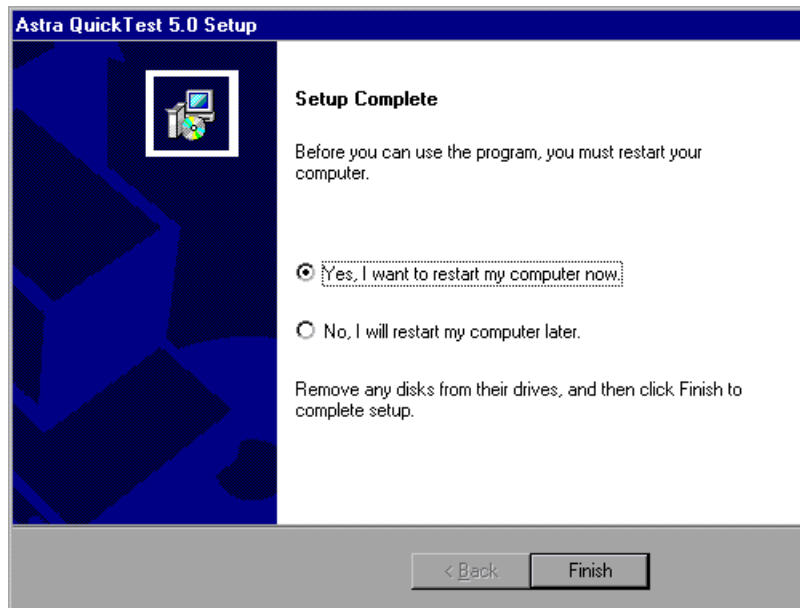
To select a different location, click **Browse**, choose a folder, and click **OK**.

Click **Next** to proceed.

- 10 The installation process begins.



- 11 The Setup Complete screen prompts you to restart your computer. You can choose to restart your computer at a later time, but you must restart your computer before you use Astra QuickTest.



Click Finish to complete the setup process.

---

**Note:** You should review the Readme file for the latest technical and troubleshooting information. To open your Readme file, click Programs > Astra QuickTest > Read Me in the Start menu.

---



---

# Uninstalling Astra QuickTest

Your Astra QuickTest installation includes an uninstall program that uninstalls Astra QuickTest software and files from your computer and removes Astra QuickTest shortcuts from your Start menu.

To uninstall Astra QuickTest:

- 1 Choose Programs > Astra QuickTest > Uninstall Astra QuickTest 5.0 on the Start menu.
- 2 A message prompts you to confirm your decision to uninstall Astra QuickTest. Click Yes to uninstall Astra QuickTest. Otherwise, click No to keep Astra QuickTest installed on your computer.

The Uninstall Shield window opens.

- 3 You may be prompted to remove shared files that are not being used by any program. If you are not sure what to do, click No to All.

The Uninstall Shield removes Astra QuickTest from your computer.

- 4 When the Uninstall program is completed, the OK button is enabled. Click OK.

---

**Note:** Uninstalling Astra QuickTest does not uninstall the Microsoft Script Debugger. You can uninstall Microsoft Script Debugger from the Add/Remove Programs dialog box in the Control Panel.

---







**Mercury Interactive Corporation**

1325 Borregas Avenue  
Sunnyvale, CA 94089 USA

**Main Telephone:** (408) 822-5200

**Sales & Information:** (800) TEST-911

**Customer Support:** (877) TEST-HLP

**Fax:** (408) 822-5300

**Home Page:** [www.mercuryinteractive.com](http://www.mercuryinteractive.com)

**Customer Support:** [support.mercuryinteractive.com](http://support.mercuryinteractive.com)

