

HP Asset Manager

Software version: 9.30

Asset Tracking Solution

Document Release Date: 31 March 2011
Software Release Date: March 2011



Legal Notices

Copyright Notices

© Copyright 1994-2011 Hewlett-Packard Development Company, L.P.

Restricted Rights Legend

Confidential computer software.

Valid license from HP required for possession, use or copying.

Consistent with FAR 12.211 and 12.212, Commercial Computer Software, Computer Software Documentation, and Technical Data for Commercial Items are licensed to the U.S. Government under vendor's standard commercial license.

Warranty

The only warranties for HP products and services are set forth in the express warranty statements accompanying such products and services.

Nothing herein should be construed as constituting an additional warranty.

HP shall not be liable for technical or editorial errors or omissions contained herein.

The information contained herein is subject to change without notice.

For information about third-party and/or open source license agreements, or to view open source code, use one of the following ways:

- In the `ThirdParty` directory of the software installation CD-ROM
- In the directories in which the binary files of the third-party and/or open source tools are located after installation of the software.
- Through the component's url indicated in the **Open Source and Third-Party Software License Agreements** guide

Trademark Notices

- Adobe®, Adobe logo®, Acrobat® and Acrobat Logo® are trademarks of Adobe Systems Incorporated.
- Corel® and Corel logo® are trademarks or registered trademarks of Corel Corporation or Corel Corporation Limited.
- Java is a registered trademark of Oracle and/or its affiliates.
- Microsoft®, Windows®, Windows NT®, Windows® XP, Windows Mobile® and Windows Vista® are U.S. registered trademarks of Microsoft Corporation.
- Oracle® is a registered trademark of Oracle Corporation and/or its affiliates.
- UNIX® is a registered trademark of The Open Group.

Acknowledgements

This product includes software developed by the Apache Software Foundation (<http://www.apache.org/> [<http://www.apache.org/>]), which is Copyright © The Apache Software Foundation. All rights reserved.

This product includes software developed by The OpenLDAP Foundation, which is Copyright ©, The OpenLDAP Foundation, Redwood City, California, USA. All Rights Reserved. OpenLDAP® is a registered trademark of the OpenLDAP Foundation.

This product includes software developed by the OpenSSL Project for use in the OpenSSL Toolkit (<http://www.openssl.org/>), which is Copyright © The OpenSSL Project. All rights reserved.

This product includes software developed by the OpenSymphony Group (<http://www.opensymphony.com/>), which is Copyright © The OpenSymphony Group. All rights reserved.

This product includes code licensed from RSA Data Security.

This product includes software developed by the JDOM Project (<http://www.jdom.org/>), which is Copyright © Jason Hunter & Brett McLaughlin. All rights reserved.

Table of Contents

Introduction	7
What is the aim of this manual?	7
Who is this guide aimed at?	7
How to use this guide	8
Chapter 1. Positioning	9
What we do	9
Asset Tracking with the HP Software software suites	9
Chapter 2. The Asset Tracking solution	11
Guided Tour	13
What is Asset Manager useful for?	14
Inventory tools	14
Data-migration tool	15
The Asset Manager Asset Tracking solution	16
A. Going further	27
Asset Manager Support Matrix	27
Information on the HP offering	27

List of Figures

2.1. HP Discovery and Dependency Mapping Inventory inventory . . .	14
2.2. HP Discovery and Dependency Mapping Inventory inventory . . .	15
2.3. HP Connect-It - data transfer	16

Introduction

What is the aim of this manual?

This manual aims to provide answers to the following questions:

- What is the Asset Tracking solution?
- What are the key benefits of Asset Manager?
- Who is Asset Manager aimed at?
- What solutions are possible with Asset Manager?
- How does Asset Manager work?

Who is this guide aimed at?

This guide is aimed at any person who would like to have an overview of the Asset Tracking solution. This guide aims to provide answers that are:

- **direct:** You are not required to install or use Asset Manager
- **comprehensive:** An **executive** presentation (► [The Asset Tracking solution](#) [page 11]) and a **practical** demonstration of the Windows interface functionality (► [Guided Tour](#) [page 13]) are included

In particular, this concerns anyone who wishes to evaluate the potential of Asset Manager, such as:

- Journalists

- Industry experts
 - Consultants
-

How to use this guide

Chapter Positioning

This chapter enables you to understand:

- What HP does
- What solutions are possible with Asset Manager

Chapter The Asset Tracking solution

This chapter helps you discover the Asset Tracking solution through the interfaces and functionalities of the various HP Software applications.

This "guided tour" includes numerous screen shots.

You are not required to install these applications.

1 Positioning

What we do

HP has over 20 years of experience helping customers achieve the highest return on their asset and service management investments. That experience has led us to build industry best practices, including those reflecting IT Infrastructure Library (ITIL) guidelines, into our products.

Asset Tracking with the HP Software software suites

HP Software software has been designed to bring its customers solutions to the problems they face on a daily basis. HP's main software products are oriented towards asset and service management (Asset Manager, HP Service Manager), HelpDesk services (HP Service Manager) or Web client interfaces (Asset Manager Web). HP Software inventory tools (HP Discovery and Dependency Mapping Inventory) and data migration tools (HP Connect-It) guarantee the consistency of customer information across the various applications.

2 The Asset Tracking solution

In order to share its customer experience, HP has created Value Path, a services and support program that combines HP's best practices expertise with your field experience. Whether you are an existing or a new customer, Value Path enables you to get the best added value from our solutions.

Asset Tracking is the first component of the Value Path program. It is linked to the three other components, all three of them being HP Software solutions: Expense Control, Process Automation and Asset Optimization.

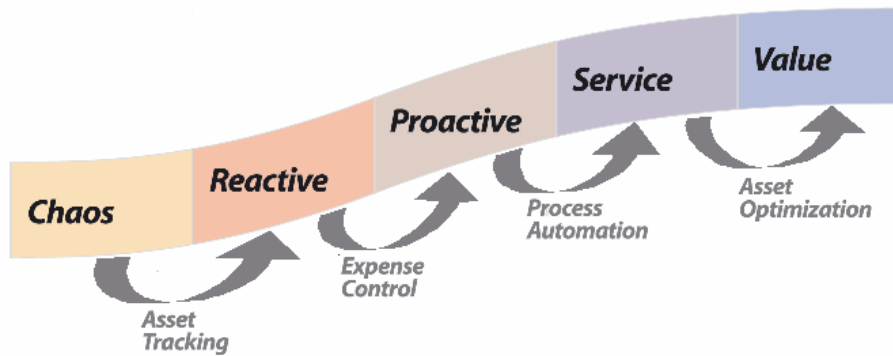
Asset Tracking at the enterprise level means cradle-to-grave asset management. The keyword is management. This means knowing who does what, with what assets, where those assets are located and what ownership costs arise from this.

It is important to realize that no effective management system can be successful unless a measurement system is present. Within Asset Management this measurement system is woven within the fabric of business and operational processes that form the infrastructure of the IT organization.

When you integrate an asset management application such as Asset Manager and a network exploration application such as HP Discovery and Dependency Mapping Inventory, with your business and operational processes, you give yourself all the necessary tools to manage your IT portfolio effectively.

HP has identified five stages through which companies evolve in their desire to achieve effective Asset Management within their infrastructure: chaos, reactive, proactive, service and value. To advance through each of these maturity

stages requires the implementation of processes to enable a smooth evolution towards a greater control of IT.



Today, software asset management is a pressing issue for 90% of companies. The IT department needs to know what software is used and by whom, where it is used, what costs are generated, and above all if usage is compliant with acquired licenses. In order to move beyond this first state of chaos, you need to deploy tools to help you manage assets (network discovery, inventory and cost tracking tools). HP offers a set of asset and services management solutions that can answer these needs.

Asset and service tracking is the fundamental step towards true asset management. The Asset Tracking solution identifies all IT equipment making up the environment, all configurations and tracking information, as well as specific installed software. This information is kept in a central repository that can be used as needed to manage equipment throughout their entire lifecycle, from acquisition through disposal. Information in this repository can be analyzed and used in other enterprise applications.

The Asset Tracking solution includes:

- 1 The Asset Tracking Assessment report. This report provides a clear review of a HP customer's ability to track assets within their environment. The scope of this review will determine:
 - the assets that need to be tracked and their associated data
 - implementation constraints related to business and operational targets of the customer
 - the effectiveness of the customer's Install, Move, Add, and Change (IMAC) processes and make recommendations for improvement and alignment to Asset Manager
 - the desired level of granularity of asset tracking
 - the next steps required to move to the reactive phase

- 2 Unique identification of hardware and software associated with a network component.
 - Benefit: Basis needed to establish software license compliance.
 - Benefit: Basis to establish standardized platform policies for hardware and software and for disaster recovery planning.
 - Benefit: Accurate vision of a computer population available to technical support technicians.
- 3 Implementation of automated hardware and software inventory through out-of-box tools.
 - Benefit: Document changes to asset inventory that can be reconciled utilizing HP Software's reconciliation engine to ensure asset accuracy and integrity (user ID, machine name, memory change, and other asset attributes).
 - Benefit: Provides management insight of existing asset environment to improve planning and preparation for major asset upgrades, replenishments or migrations.
 - Benefit: Reduce need for physical inventories and asset audits within your environment by automating the identification of new assets.
- 4 Provide ad-hoc management reports of assets, and their attributes, via Asset Manager views.
 - Benefit: Improves asset-reporting ability of hardware and software attributes to ensure compliance with laws governing control of assets and associated relationships.
 - Benefit: Provides administrators the ability to analyze asset environment to improve service support, reduce costs of procurement, and respond to management requests.
- 5 Basis established to provide future integrations to other applications and to pass important information about assets to other applications.

Guided Tour

This chapter emphasizes the information that you have at your fingertips with Asset Manager.

You do not need to install Asset Manager: Screen captures show you the result in the Windows interface.

Let's assume you are an IT manager who requires executive information on the computer population and its maintenance costs.

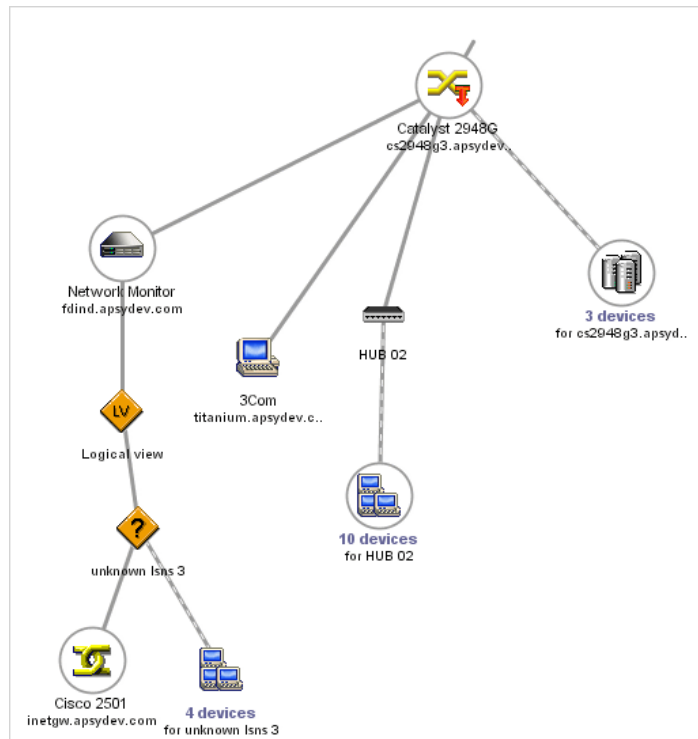
What is Asset Manager useful for?

Asset Manager enables you to manage your asset portfolio and all events associated to the lifecycle of each of your portfolio items: asset acquisition, related costs (taxes, property, maintenance contracts, work orders, etc.).

Inventory tools

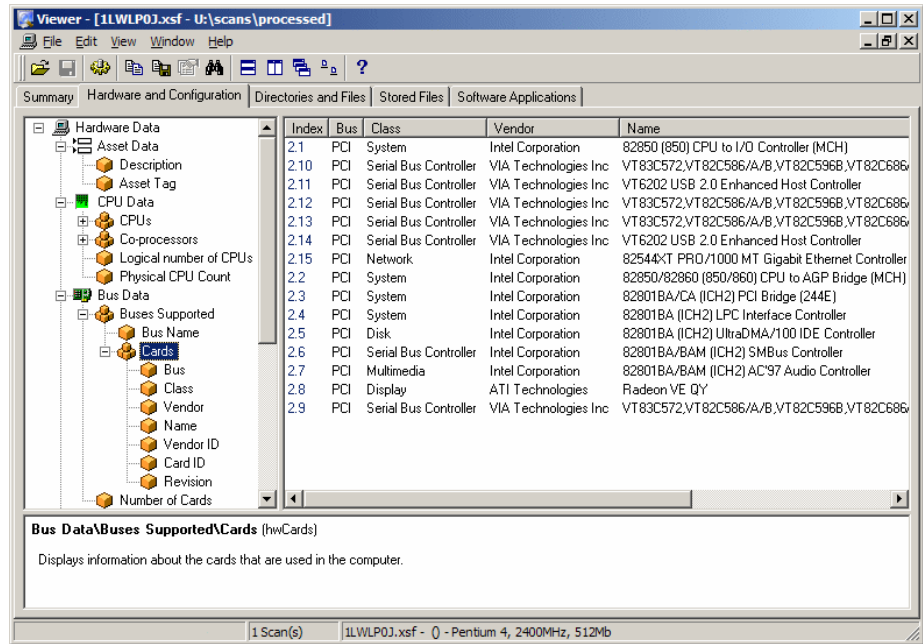
Using HP Discovery and Dependency Mapping Inventory makes it possible to obtain a global view of your IT portfolio.

Figure 2.1. HP Discovery and Dependency Mapping Inventory inventory



Each portfolio item discovered by HP Discovery and Dependency Mapping Inventory is then examined and its technical features are collected.

Figure 2.2. HP Discovery and Dependency Mapping Inventory inventory



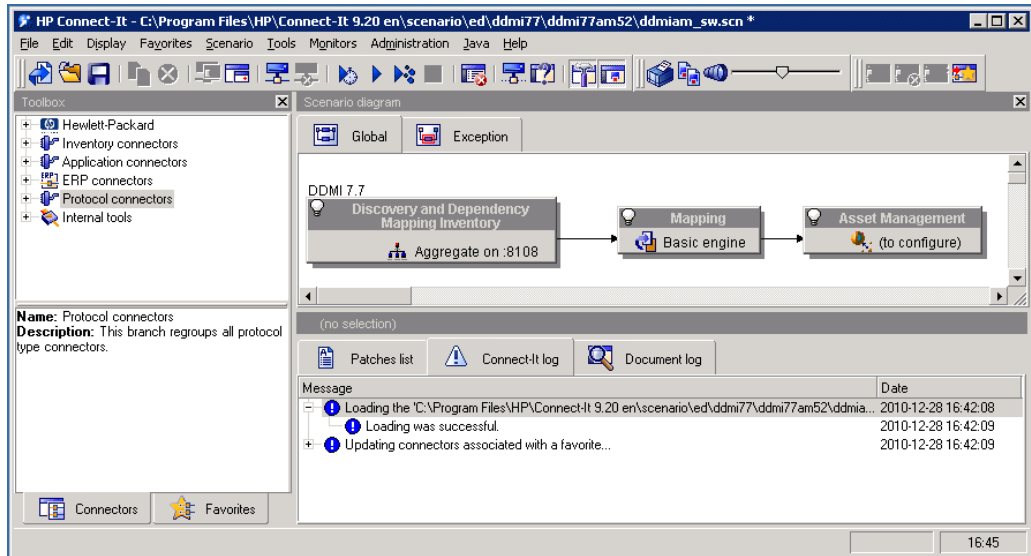
Information collected through HP Software inventory tools are then transferred to the Asset Manager production database via HP Connect-It.

► **HP Discovery and Dependency Mapping Inventory** guide.

Data-migration tool

HP Connect-It enables data transfer between two applications; it queries a source application database in order to extract data that can be interpreted by a target database.

Figure 2.3. HP Connect-It - data transfer



HP Connect-It is delivered with the Asset Manager program in order to provide you with:

- Real-time replication of data shared by two applications, such as HP Discovery and Dependency Mapping Inventory and Asset Manager.
- Data migration from a legacy database to an Asset Manager database
- ▶ **HP Connect-It User Guide.**
- ▶ **Asset Manager Reconciliation** guide.

The Asset Manager Asset Tracking solution

The following modules enable the asset tracking and management:

- Barcode Inventory
- Portfolio
- Reconciliation
- Contract
- Software Asset Management

Portfolio tracking granularity

Before any physical and IT inventory of your assets, you should think of how detailed you would like your asset management to be.

Your portfolio structure should take into account the Asset Manager data model. The administrator's role will be to define natures and models that best reflect the reality of how the portfolio is managed.

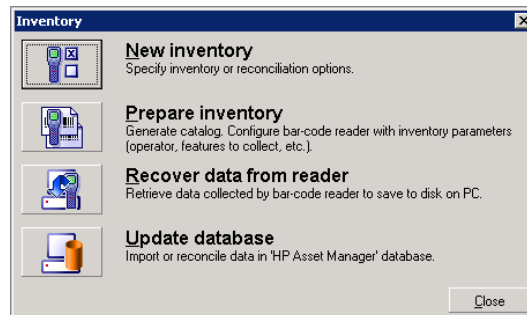
► **Portfolio** guide, chapter **Overview**.

Barcode Inventory

Asset and service management with Asset Manager starts with a physical inventory of all company assets.

The bar-code inventory module is used to:

- Collect with speed and accuracy, your company's assets in order to build an Asset Manager database.
- Uniquely identify each of the company's assets in order to keep track of changes in your inventory. This makes it easy to detect movements, acquisitions, loss or theft.

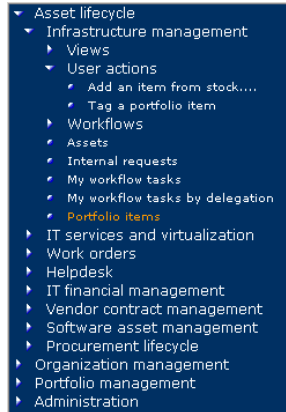


The administrator records each of the assets to be inventoried with a reader that has been configured for the purpose, and then transfers the data to Asset Manager. The data related to the inventory is visible in the Portfolio screen.

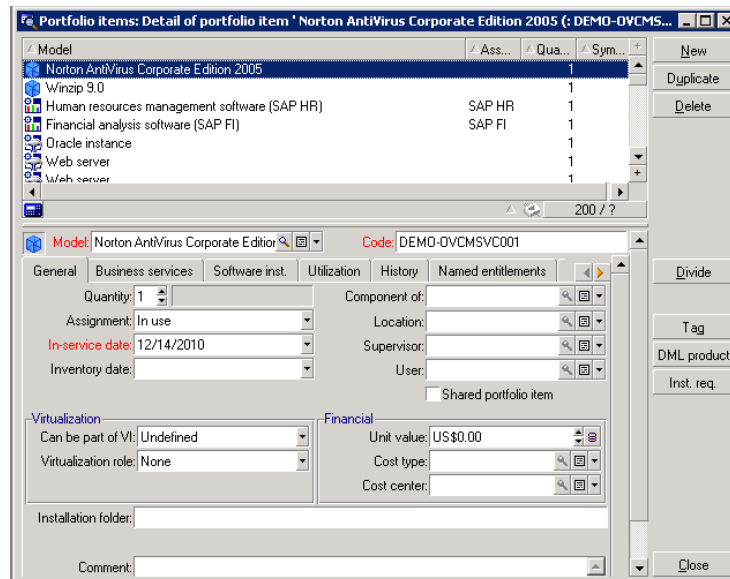
► **Common tables** guide, chapter **Bar-code inventory**.

Portfolio

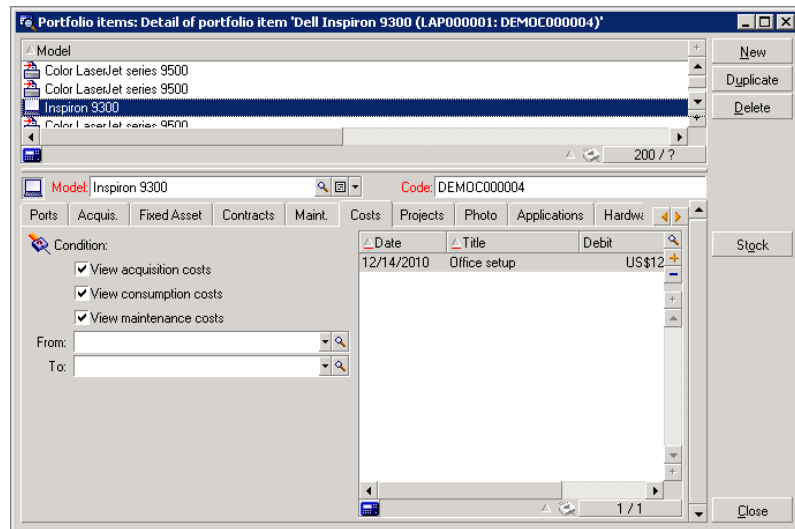
The administrator accesses the portfolio with the **Asset lifecycle/ Infrastructure management/ portfolio items** shortcut.



All the assets in your IT portfolio are visible from the **Portfolio items** screen.




With a single click, you can access information related to any given item of your IT portfolio.



For each selected portfolio item, all information and dependencies are visible:

- Items attached to this item: Peripherals and software
- Technical features of this item: Memory, CPU, drives, etc.
- Identification of the asset: asset tag, barcode, etc.
- Acquisition cost
- Immobilization cost
- Contracts linked to the asset: leasing contracts, maintenance, warranty extension, etc.

Hierarchy

According to the level of granularity you have defined for your asset management system, you can manage items more or less closely. This level of granularity defines a hierarchy of the items making up your portfolio. You can click  to display the hierarchy (tree-view) of the items.

This granularity is visible for instance for departments and employees.

Name	First	Title	Telephone	Fax
Admin			(408) 536-6000	(650) 572-9099
Demo			(408) 536-6000	(650) 572-9099
Hewlett Packard			(650) 435-5001	(650) 572-3001
Administration			(650) 435-5002	(650) 435-3002
Finance			(650) 435-5004	(650) 435-3004
I.S. Department			(650) 435-5011	(650) 435-3011
Chadwick	James	Project Manager	(650) 435-5022	(650) 435-3022
Simpson	Lisa	Analyst	(650) 435-5020	(650) 435-3020
Technical Support			(650) 435-5012	(650) 435-3012
Todd	Sweeney	Helpdesk Manager	(650) 435-5019	(650) 435-3019
Production			(650) 435-5024	(650) 435-3024
Research			(650) 435-5027	(650) 435-3027
Sales			(650) 435-5029	(650) 435-3029
Ibm			(800) 426-4001	(800) 426-4001
Intel			(800) 435-4001	(800) 435-4001
Taltek			(408) 536-6000	0181 345 9801

► **Common tables guide, chapter Employees and Departments.**

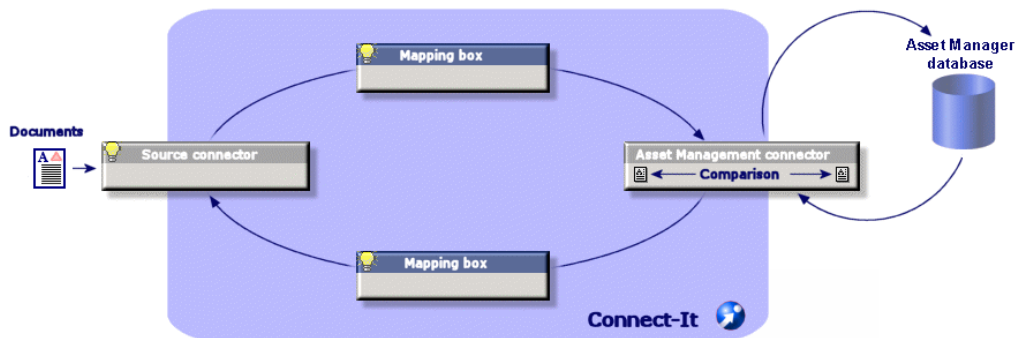
Reconciliation

Data reconciliation is performed using HP Connect-It.

Reconciliation is the process of integrating incoming data from a source application that is considered more up to date than the data already present in a target application.

This process is based on the following question: "Does the incoming data already exist in the target application?"

- If the answer is "no", the data is inserted
- If the answer is "yes", then the existing data is updated according to the new information contained in the incoming data

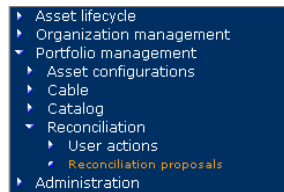


Properly incorporated in your operations cycle, reconciliation becomes transparent and enables you work on data in Asset Manager that is always up to date.

Reconciliation enables for instance to maintain up-to-date:

- the list of installed machines (HP Discovery and Dependency Mapping Inventory integration)
- the location of employees (SAP integration)
- the list of incidents (HP Service Manager integration)

The administrator accesses the items to reconcile using the **Portfolio management/ Reconciliation/ Reconciliation proposals** shortcut



The items to reconcile appear in the **Reconciliation proposals** screen.

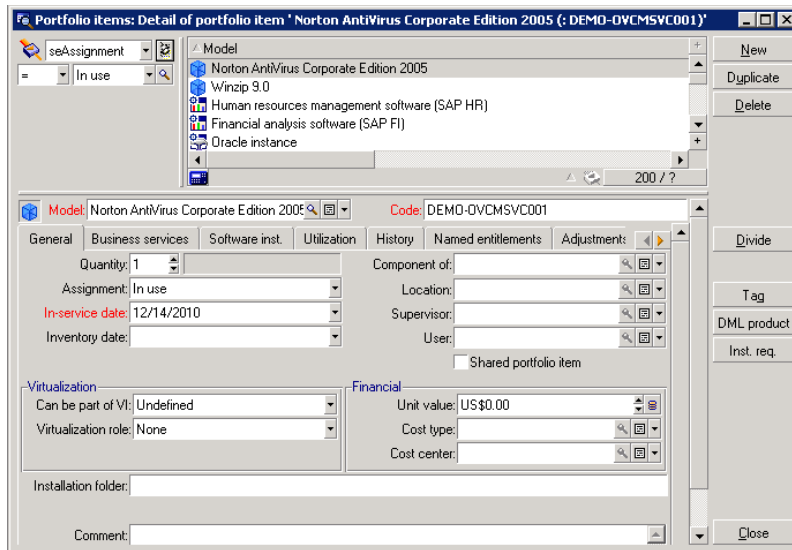
Name	Table	Path	Previous value
The memory of the computer LP89604ESCHROED has decreased.	amComputer	lMemorySizeMb	2048
The memory of the computer MSI-MAIER has decreased.	amComputer	lMemorySizeMb	256
The memory of the computer PDAVIES has decreased.	amComputer	lMemorySizeMb	256
The memory of the computer JKYTW/DN has decreased.	amComputer	lMemorySizeMb	512
The memory of the computer FJORMIN has decreased.	amComputer	lMemorySizeMb	256
The memory of the computer PLESROCHE has decreased.	amComputer	lMemorySizeMb	512
The reference price of BASE2002 at Intranets.com 2002 has increased by 26%.	amCatRef	lPrice	382
The reference price of CI000345 at Interleasing 2002 has increased by 10%.	amCatRef	lPrice	96
The reference price of CI000359 at Interleasing 2002 has increased by 24%.	amCatRef	lPrice	41
The reference price of CI000366 at Interleasing 2002 has increased by 25%.	amCatRef	lPrice	391

The administrator chooses to accept or reject the reconciliation proposals for each item in the list.

- ▶ **Reconciliation guide.**

Views

Each Asset Manager user is able to configure the application in order to only show what they need to get the job done. For instance, an employee in the IT department can create a view showing portfolio items in stock.



► **Tailoring** guide, chapter **Customizing Windows clients**, section **Using views**.

Contract

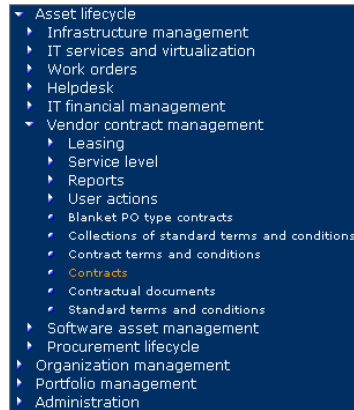
Company assets are often linked to contracts.

The **Contracts** module enables companies manage all kinds of contracts, such as leasing, license, maintenance, warranty or insurance contracts.

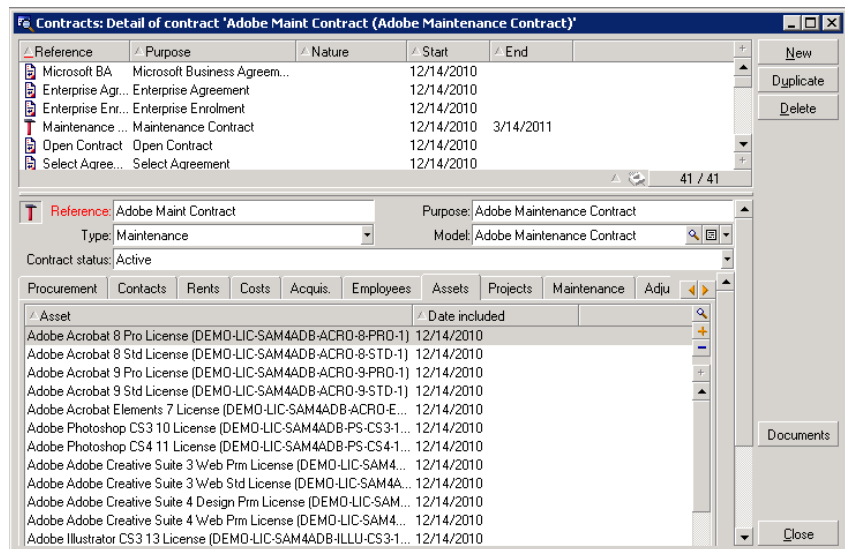
The different contract types managed are:

- Master lease
- Lease schedule
- Insurance contract
- License contract
- Blanket purchase order type contract
- Other

The administrator accesses the Contracts module with the **Contracts** shortcut.



All assets on the contract are visible in the **Assets** tab in the contract detail.

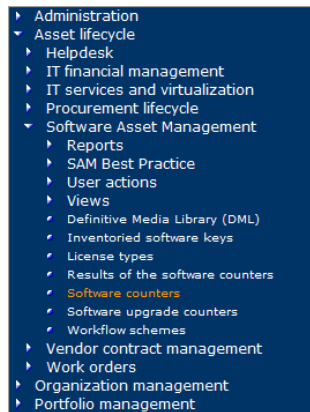


► **Contracts** guide.

Software Asset Management

Using the wizards provided with Asset Manager, the administrator can know at any given time how what software is installed on the company's computers and compare this licensing information.

The administrator accesses the counters using the Portfolio management/ Software counters shortcut.



Asset Manager displays the list of software counters and the calculations performed

Name	Do n...	Rights c...	Entitleme...	Installatio...	Unused i...
Windows XP licenses and installations count	Yes	11	0	5	
Windows Vista licenses and installations count	Yes	5	0	10	
PowerVM Standard Installations	Yes	0	0	35	
HP Service Manager 7.11	No	0	0	12	
HP uCMBD 7.5	No	0	0	1	
IBM Telelogic Rhapsody Reporterplus 7.2	No	0	0	4	

Code: HPSM711 Use as template

Nature: Is part of corporate software management

Group by: Cost centers [amCostCenter] Do not include in the compliance reports

Supervisor: Edit the counter using the wizards

License contract: Rights count

Brand: Hewlett Packard Entitlements count

Installations/Utilizations count

Software upgrade counter

Results of calculations:

Rights count: 0

Entitlements count: 0

Installations/Utilizations count: 12

Unused installations: 0

No of records in the scope: 34

Compliance: -12

Calculated on: 12/14/2010 9:54:25 PM

► **Software assets guide.**

A Going further

You have several ways of finding out more about Asset Manager:

Asset Manager Support Matrix

For information on supported environments, refer to the HP support site at **www.hp.com/go/hpsoftwaresupport**.

Please contact HP for an identifier and a password.

Once you are logged on to the support site, click the [Support matrices](#) link.

Information on the HP offering

The HP Web site contains a wealth of information.

In particular, you will find product documentation, white papers, demonstrations, customer testimonials.

The site is located at: **<http://www.hp.com/#Product>**.

