

HP Asset Manager

Software version: 9.30

Physical Data Models

Document Release Date: 31 March 2011
Software Release Date: March 2011



Legal Notices

Copyright Notices

© Copyright 1994-2011 Hewlett-Packard Development Company, L.P.

Restricted Rights Legend

Confidential computer software.

Valid license from HP required for possession, use or copying.

Consistent with FAR 12.211 and 12.212, Commercial Computer Software, Computer Software Documentation, and Technical Data for Commercial Items are licensed to the U.S. Government under vendor's standard commercial license.

Warranty

The only warranties for HP products and services are set forth in the express warranty statements accompanying such products and services.

Nothing herein should be construed as constituting an additional warranty.

HP shall not be liable for technical or editorial errors or omissions contained herein.

The information contained herein is subject to change without notice.

For information about third-party and/or open source license agreements, or to view open source code, use one of the following ways:

- In the `ThirdParty` directory of the software installation CD-ROM
- In the directories in which the binary files of the third-party and/or open source tools are located after installation of the software.
- Through the component's url indicated in the **Open Source and Third-Party Software License Agreements** guide

Trademark Notices

- Adobe®, Adobe logo®, Acrobat® and Acrobat Logo® are trademarks of Adobe Systems Incorporated.
- Corel® and Corel logo® are trademarks or registered trademarks of Corel Corporation or Corel Corporation Limited.
- Java is a registered trademark of Oracle and/or its affiliates.
- Microsoft®, Windows®, Windows NT®, Windows® XP, Windows Mobile® and Windows Vista® are U.S. registered trademarks of Microsoft Corporation.
- Oracle® is a registered trademark of Oracle Corporation and/or its affiliates.
- UNIX® is a registered trademark of The Open Group.

Acknowledgements

This product includes software developed by the Apache Software Foundation (<http://www.apache.org/> [<http://www.apache.org/>]), which is Copyright © The Apache Software Foundation. All rights reserved.

This product includes software developed by The OpenLDAP Foundation, which is Copyright ©, The OpenLDAP Foundation, Redwood City, California, USA. All Rights Reserved. OpenLDAP® is a registered trademark of the OpenLDAP Foundation.

This product includes software developed by the OpenSSL Project for use in the OpenSSL Toolkit (<http://www.openssl.org/>), which is Copyright © The OpenSSL Project. All rights reserved.

This product includes software developed by the OpenSymphony Group (<http://www.opensymphony.com/>), which is Copyright © The OpenSymphony Group. All rights reserved.

This product includes code licensed from RSA Data Security.

This product includes software developed by the JDOM Project (<http://www.jdom.org/>), which is Copyright © Jason Hunter & Brett McLaughlin. All rights reserved.

Table of Contents

Preface	5
Tables	5
Links	6
Chapter 1. Portfolio	9
Models	10
Portfolio items	11
Assets	12
Assets linked to the procurement cycle	13
IT equipment	14
Telephones	15
Ports and connections	16
Work Orders	17
Projects	18
Stocks	19
Software Installations	20
Cost Centers	21
Chapter 2. Procurement cycle	23
Procurement cycle	24
Purchase requests	25
Orders	26

Receptions	27
Invoices	28
Assets to be returned	29
Chapter 3. Contracts	31
Contracts	32
Chapter 4. Helpdesk	33
Helpdesk	34
Chapter 5. Financials	35
Budget and expenses	36
Chargebacks	37
Taxes	38
Chapter 6. Cable and Circuit	39
Cables and cable devices	40
Color codes	41
Label rules	42
Pair/conductor types	43
Cable duties	44
Slots	45
Topologies	46
Topology groups	47
Termination-field configurations	48
Cable links	49
Chapter 7. Administration	51
Access to the database	52
Workflows	53
Chapter 8. Organization	55
Employees and Departments	56
Chapter 9. Catalog	57
Catalog	58

Preface

This guide presents diagrams that correspond to the physical data models in Asset Manager.

Each of these diagrams contains one or more tables used by the modules in Asset Manager.

Tables

Each of the tables represented in this guide is identified by its SQL name.

Examples:

- The Portfolio items table uses the SQL name **amPortfolio**.
- The Assets table uses the SQL name **amAsset**.
- The Locations table uses the SQL name **amLocation**.
- The Employees and departments table uses the SQL name **amEmplDept**.

The most important tables in each diagram are shown as the largest.


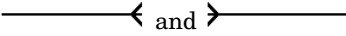

Examples:

- The Assets table (**amAsset**) in the [Assets](#) [page 12] diagram.
- The Cables table (**amCable**) in the [Cables and cable devices](#) [page 40] diagram.
- The Taxes table (**amTax**) in the [Taxes](#) [page 38] diagram.

Links

There are three types of links between tables:

- 1-1 links.
- 1-n and n-1 links.
- n-n links.

Type of link	Graphical representation of link
1-1	
1-n (reverse link of of n-1)	
n-n	

Each of the links represented in this guide is identified by its SQL name.


Examples:

- The link going from the Portfolio items table (**amPortfolio**) to the Employees and departments table (**amEmplDept**) has the SQL name **User**.
- The link going from the Employees and departments table (**amEmplDept**) to the Portfolio items table (**amPortfolio**) has the SQL name **ItemsUsed**.

 **Note:**

The SQL name of a link assumes that one of the linked tables is the source table and the other is the destination table. Thus, the **User** link between the source table (**amPortfolio**) indicates that the link points to the user record of the destination table (**amEmplDept**). Its reverse link, though, is called **ItemsUsed**. This link points to the records of the assets used by a given user. In this case, the source table is that of Employees and departments and the destination table is that of portfolio items.

In an effort not to overload our diagrams, reverse links are not represented. The choice of a link and its reverse link is arbitrary. If you want to find out what the SQL name of a reverse link is:

- 1 Launch Asset Manager Application Designer.
- 2 Open your database description.
- 3 Select the table of your choice.
- 4 Click .
- 5 Select a link.
- 6 The SQL name of its reverse link is indicated in the **Reverse link** field.

1-1 links

This kind of link means that:

- ◆ One record in the source table is linked to one record in the destination table.

Example: The **Asset** link between the Computers table (**amComputer**) and the Assets table (**amAsset**) in the [IT equipment](#) [page 14] diagram. This link indicates that only one computer record can be linked to only one asset record.

1-n and n-1 links

A 1-n link means that:

- One record from the source table can be linked to several records in the destination table.
- Several records in the destination table can be linked to one record in the source table.

Example: The **Rents** link between the Contracts table (**amContracts**) and the Contract rents (**amCntrRent**) table in the [Contracts](#) [page 32] diagram. This link indicates that one contract record can be linked to several contract rent records.

A n-1 link means that:

- Several records in the source table can be linked to one record in the destination table.
- One record in the destination table can be linked to several records in the source table.

Example: The **Model** link between the Assets table (**amAsset**) and the Models table (**amModel**) in the [Models](#) [page 10] diagram. This link indicates that several asset records can correspond to the same model record.

n-n links

This type of link means that:

- ◆ Several records in the source table can be linked to several records in the destination table.

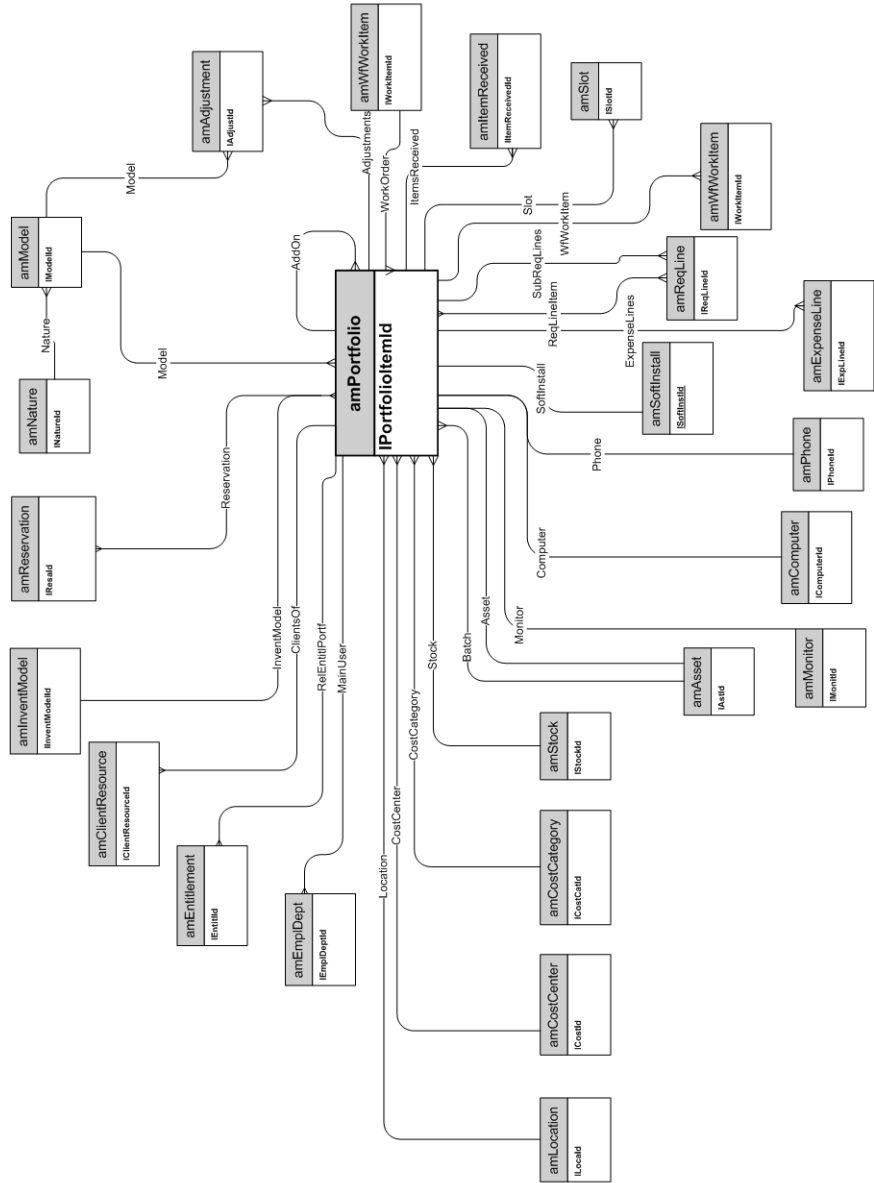
Example: The **FuncRights** link between the User profiles table (**amProfile**) and the Functional rights table (**amFuncRight**) in the [Access to the database](#) [page 52] diagram. This link indicates that an asset record can be linked to several functional right records and that a functional right record can be linked to several user profile records.

1 Portfolio

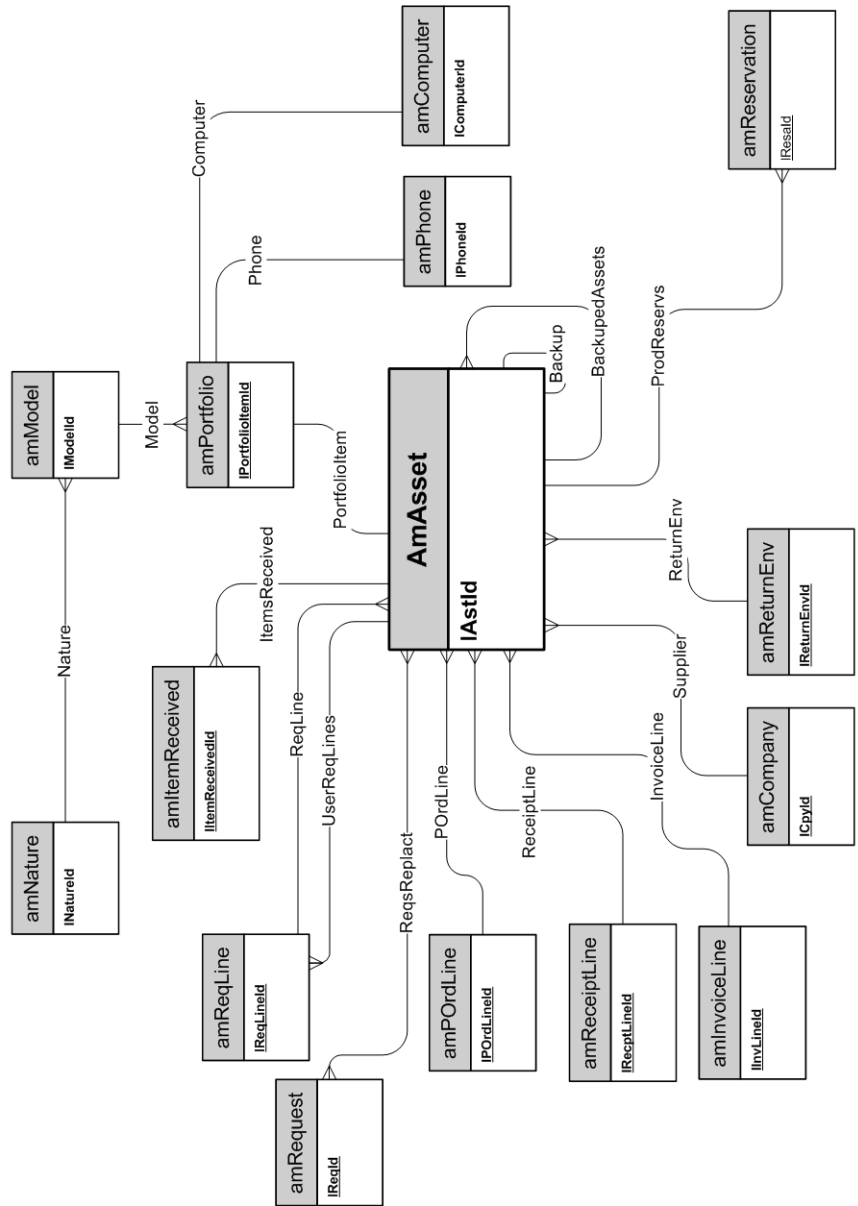
This chapter presents diagrams of the following physical data models:

- [Models](#) [page 10]
- [Portfolio items](#) [page 11]
- [Assets](#) [page 12]
- [Assets linked to the procurement cycle](#) [page 13]
- [IT equipment](#) [page 14]
- [Telephones](#) [page 15]
- [Ports and connections](#) [page 16]
- [Work Orders](#) [page 17]
- [Projects](#) [page 18]
- [Stocks](#) [page 19]
- [Software Installations](#) [page 20]
- [Cost Centers](#) [page 21]

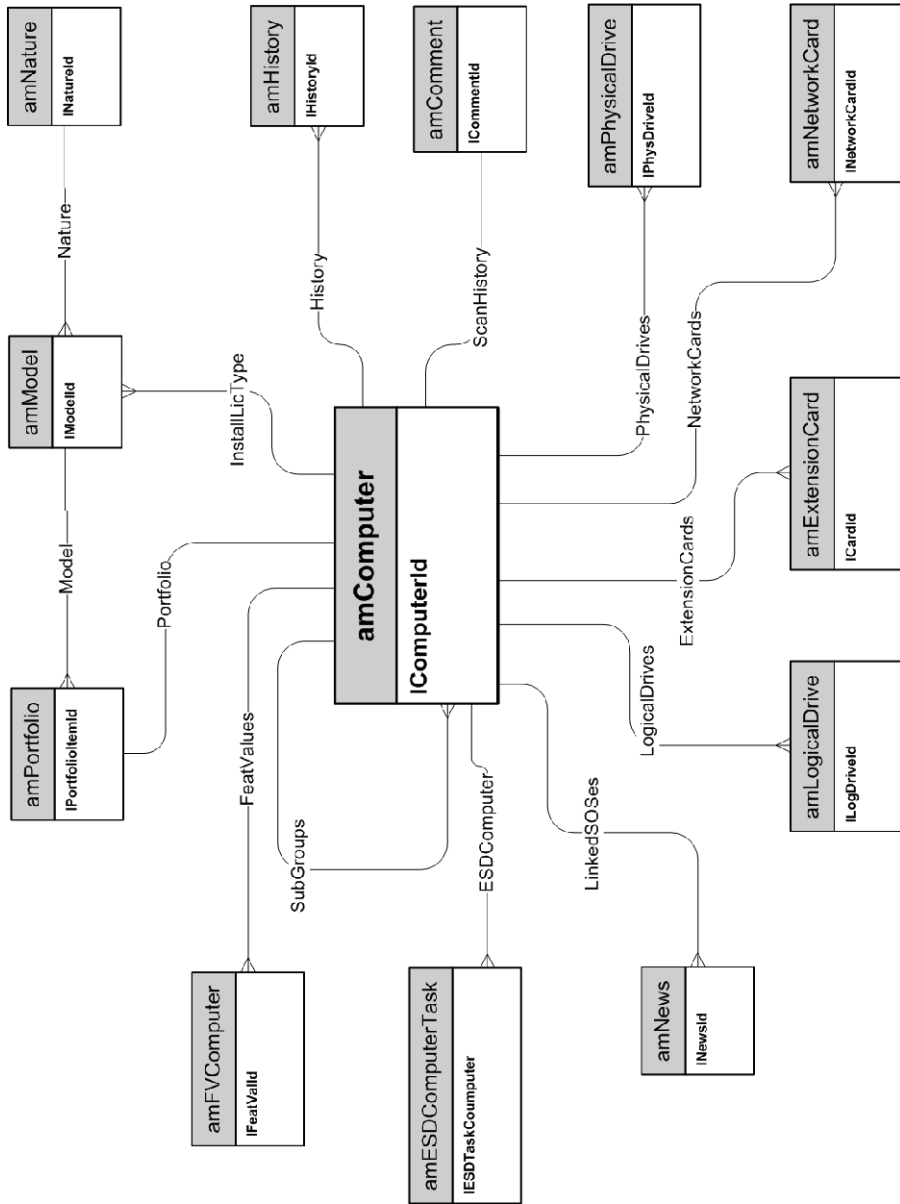
Portfolio items



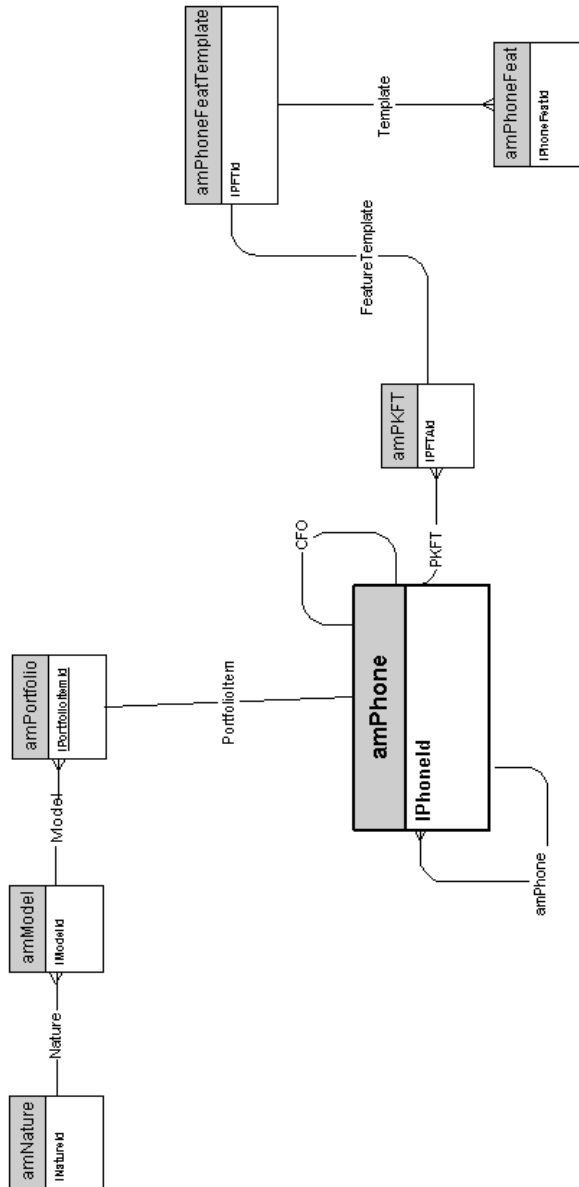
Assets linked to the procurement cycle



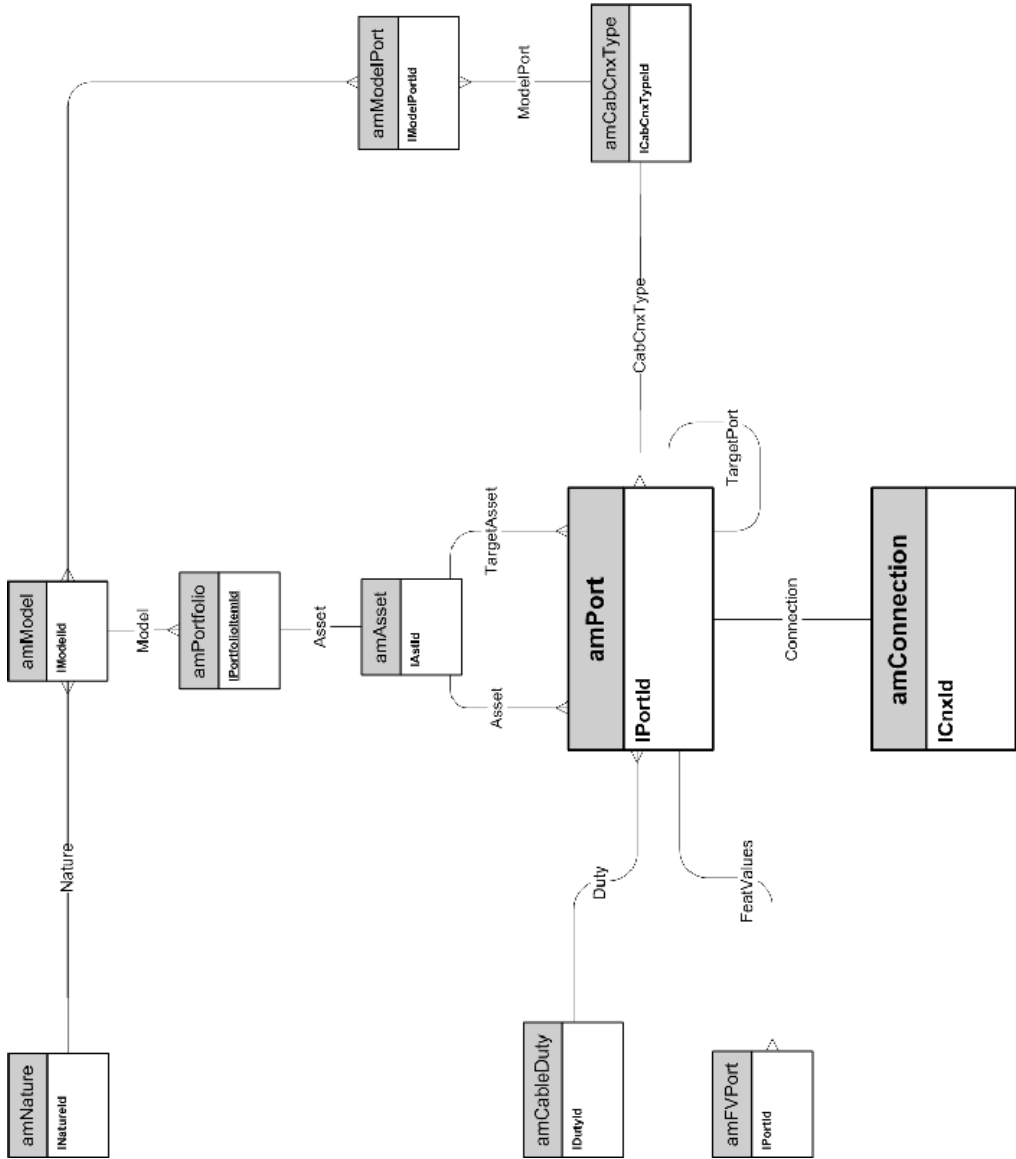
IT equipment



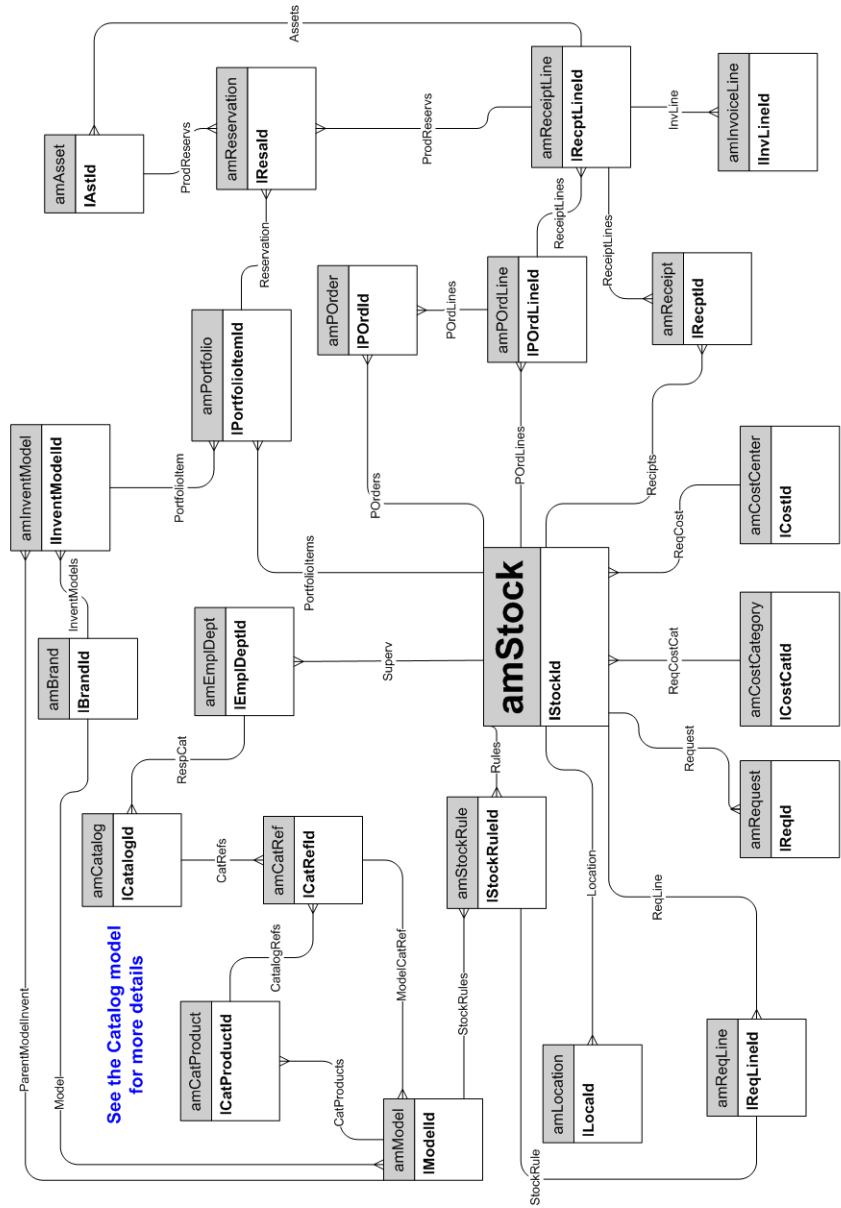
Telephones



Ports and connections



Stocks

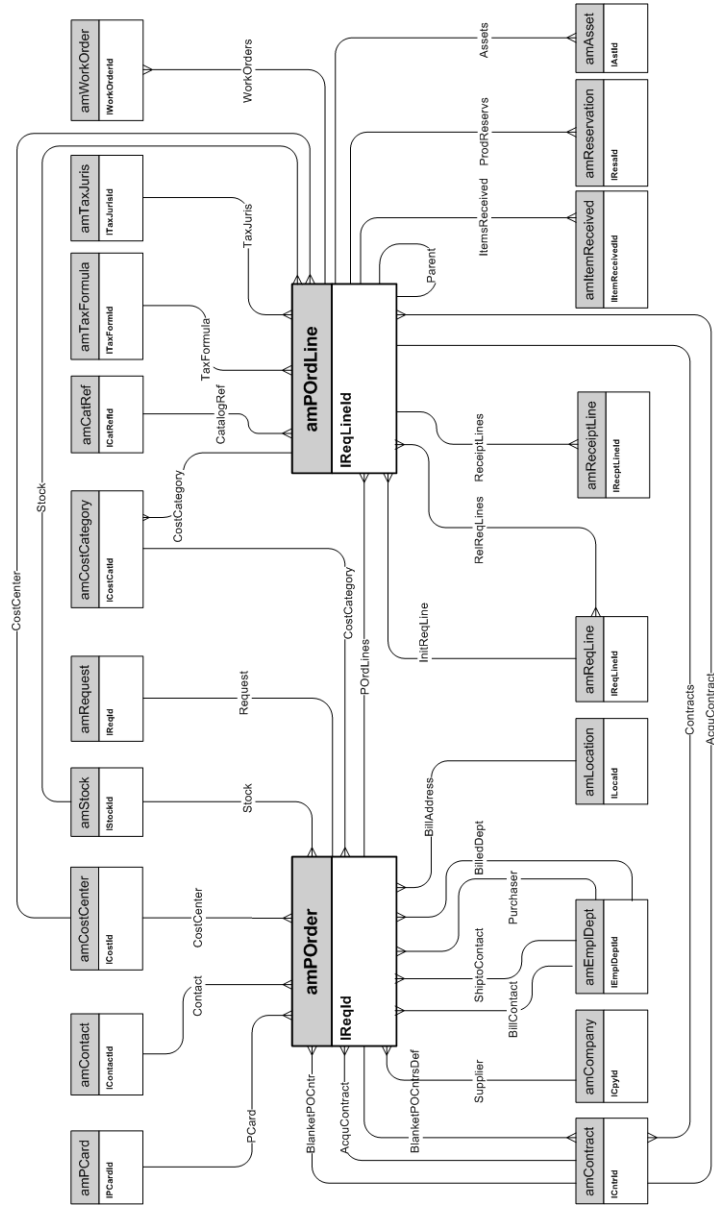


2 Procurement cycle

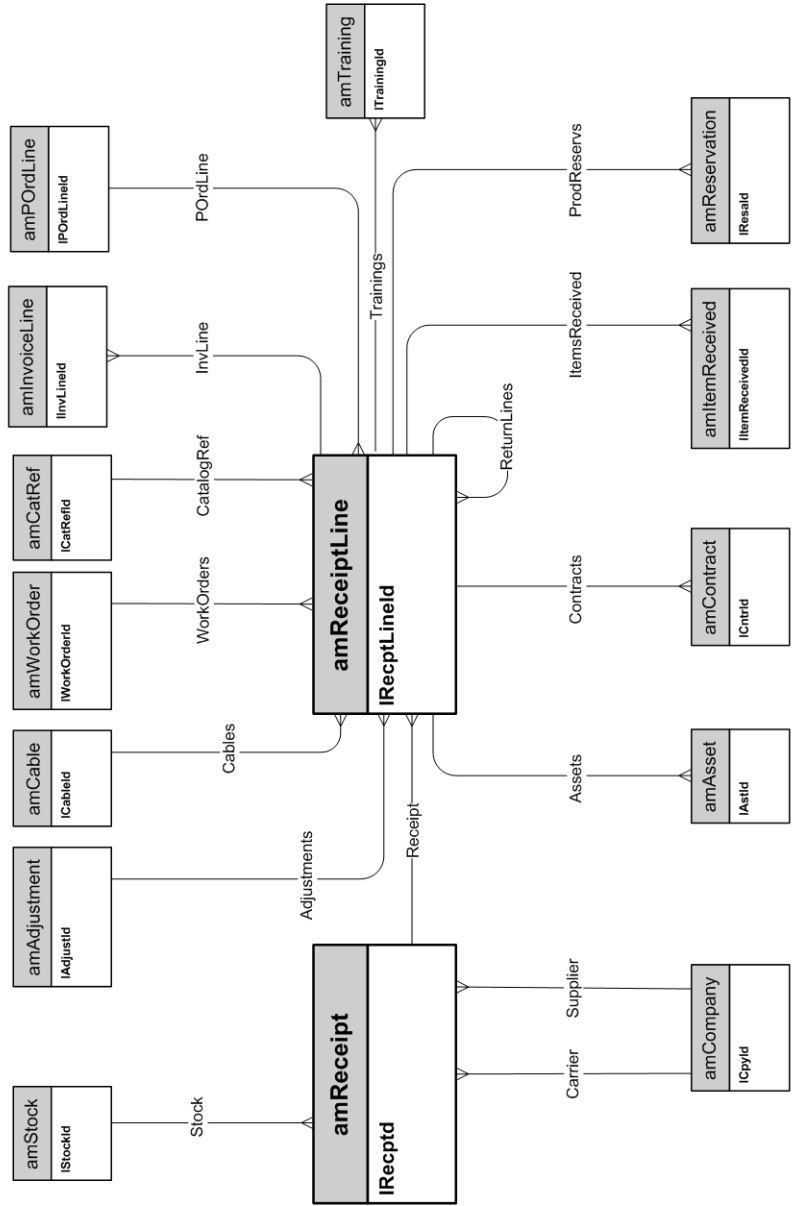
This chapter presents diagrams of the following physical data models:

- [Procurement cycle](#) [page 24]
- [Purchase requests](#) [page 25]
- [Orders](#) [page 26]
- [Receptions](#) [page 27]
- [Invoices](#) [page 28]
- [Assets to be returned](#) [page 29]

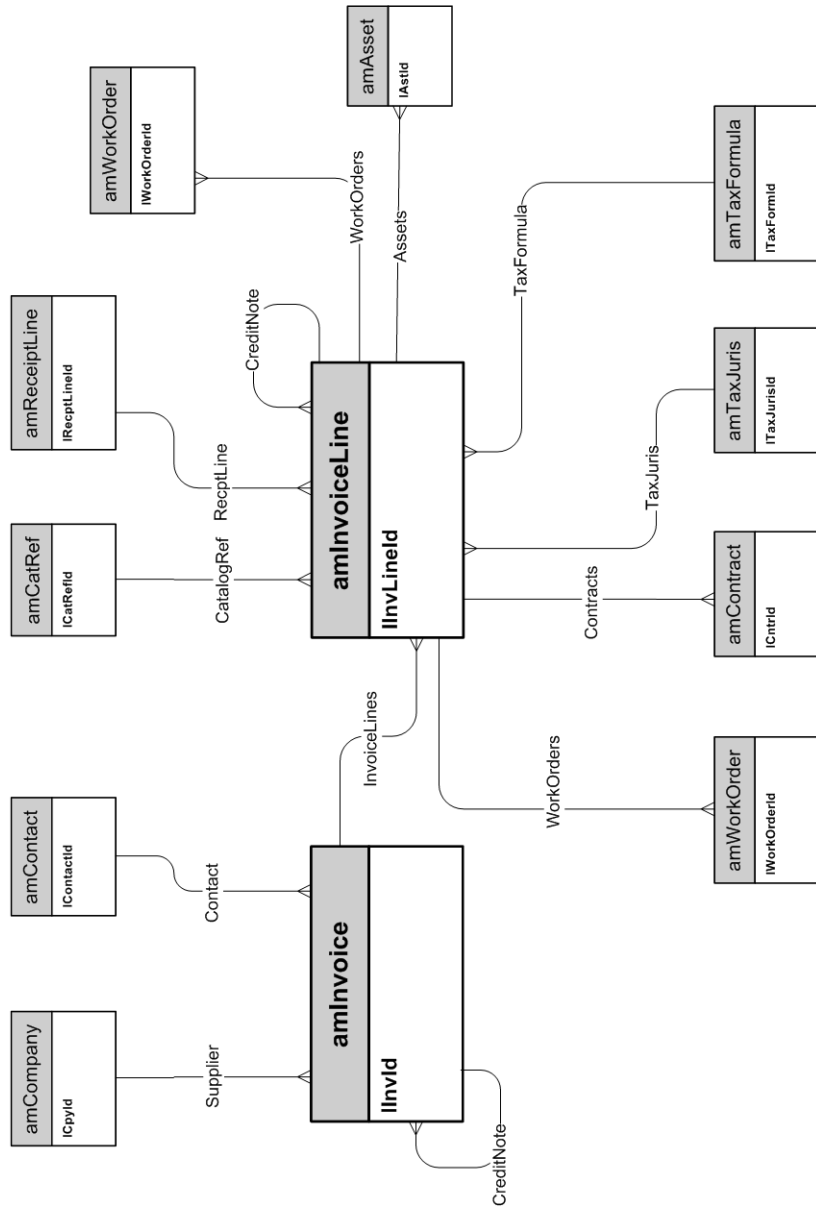
Orders



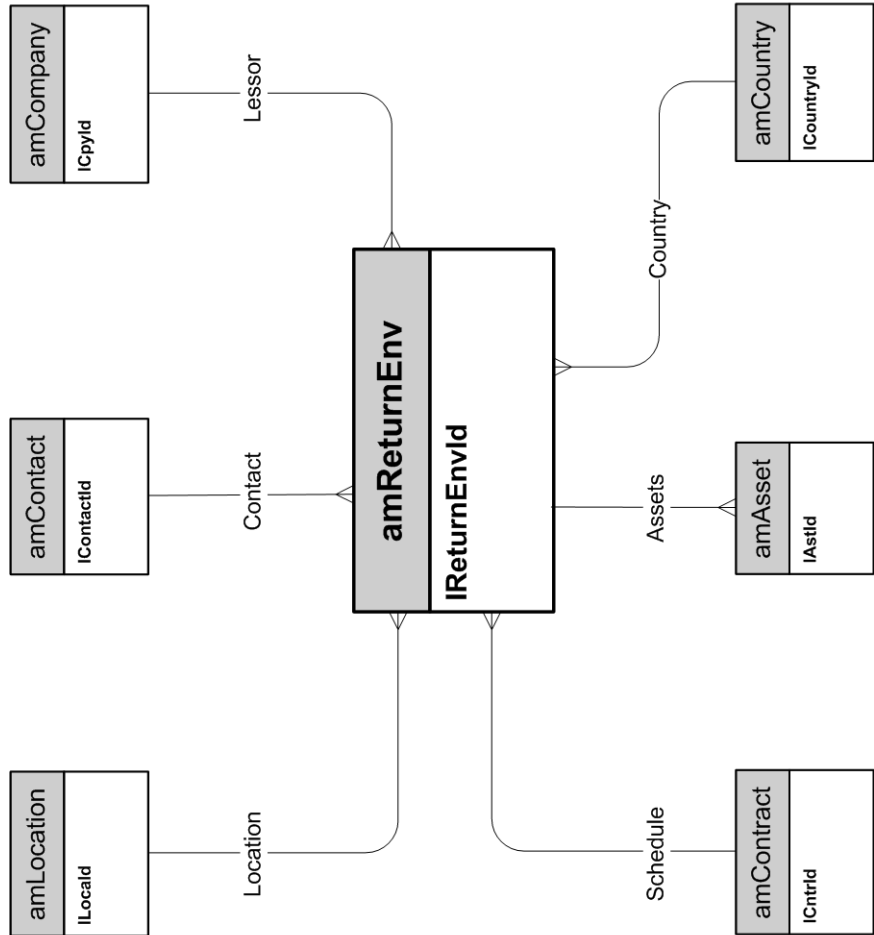
Receptions



Invoices



Assets to be returned



3 Contracts

This chapter presents the diagram of the following physical data model:

- ◆ [Contracts](#) [page 32]

4 Helpdesk

This chapter presents the diagram of the following physical data model:

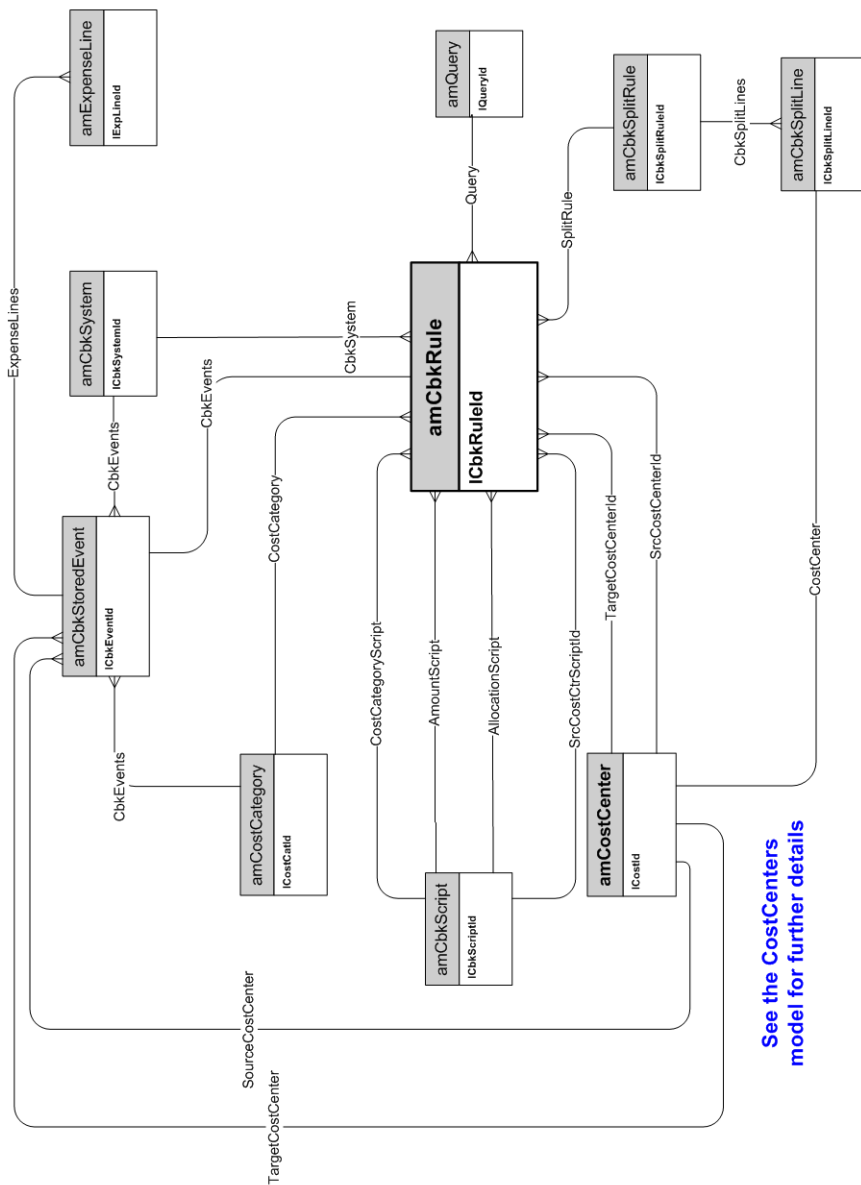
- ◆ [Helpdesk](#) [page 34]

5 Financials

This chapter presents diagrams of the following physical data models:

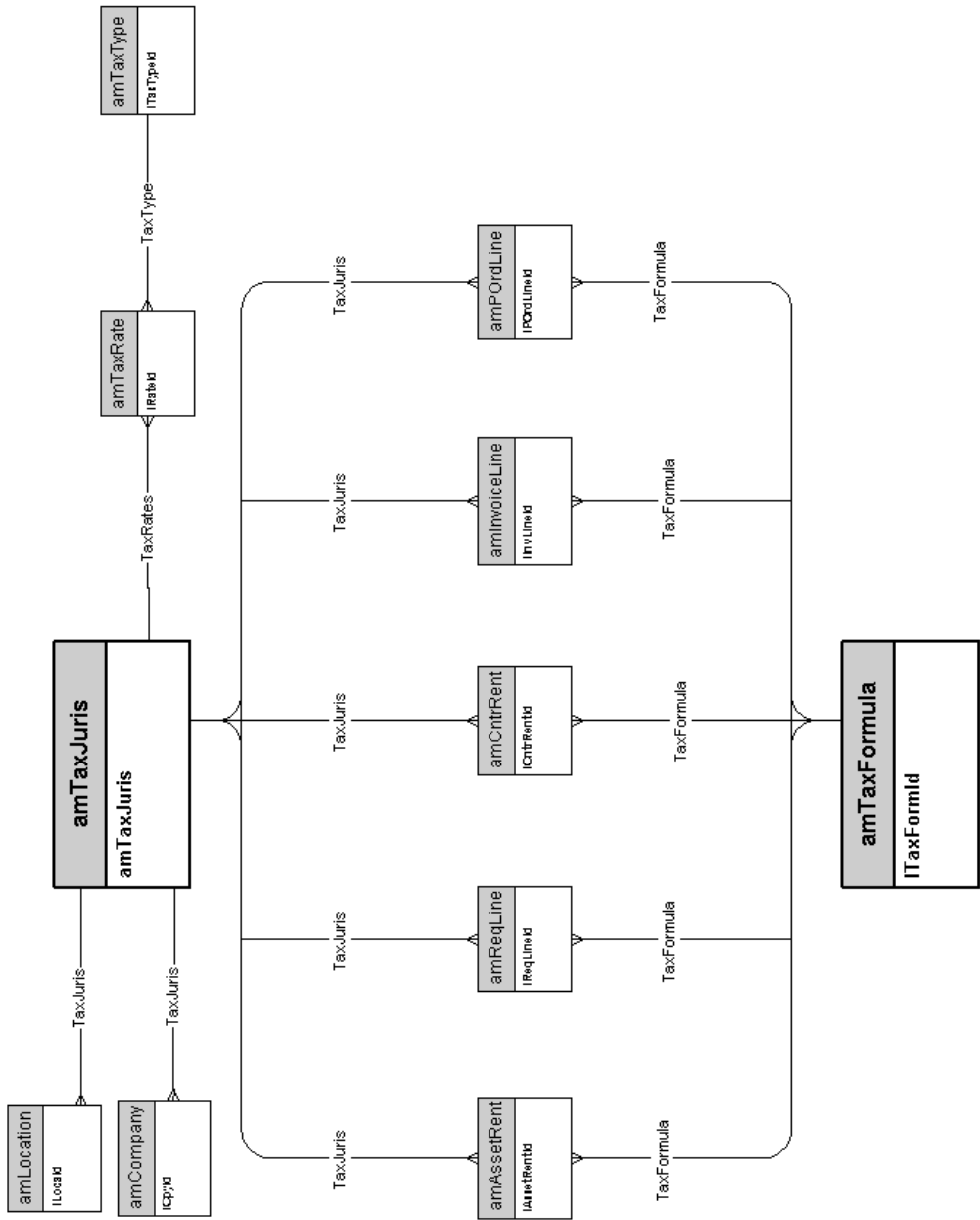
- [Budget and expenses](#) [page 36]
- [Chargebacks](#) [page 37]
- [Taxes](#) [page 38]

Chargebacks



See the CostCenters model for further details

Taxes

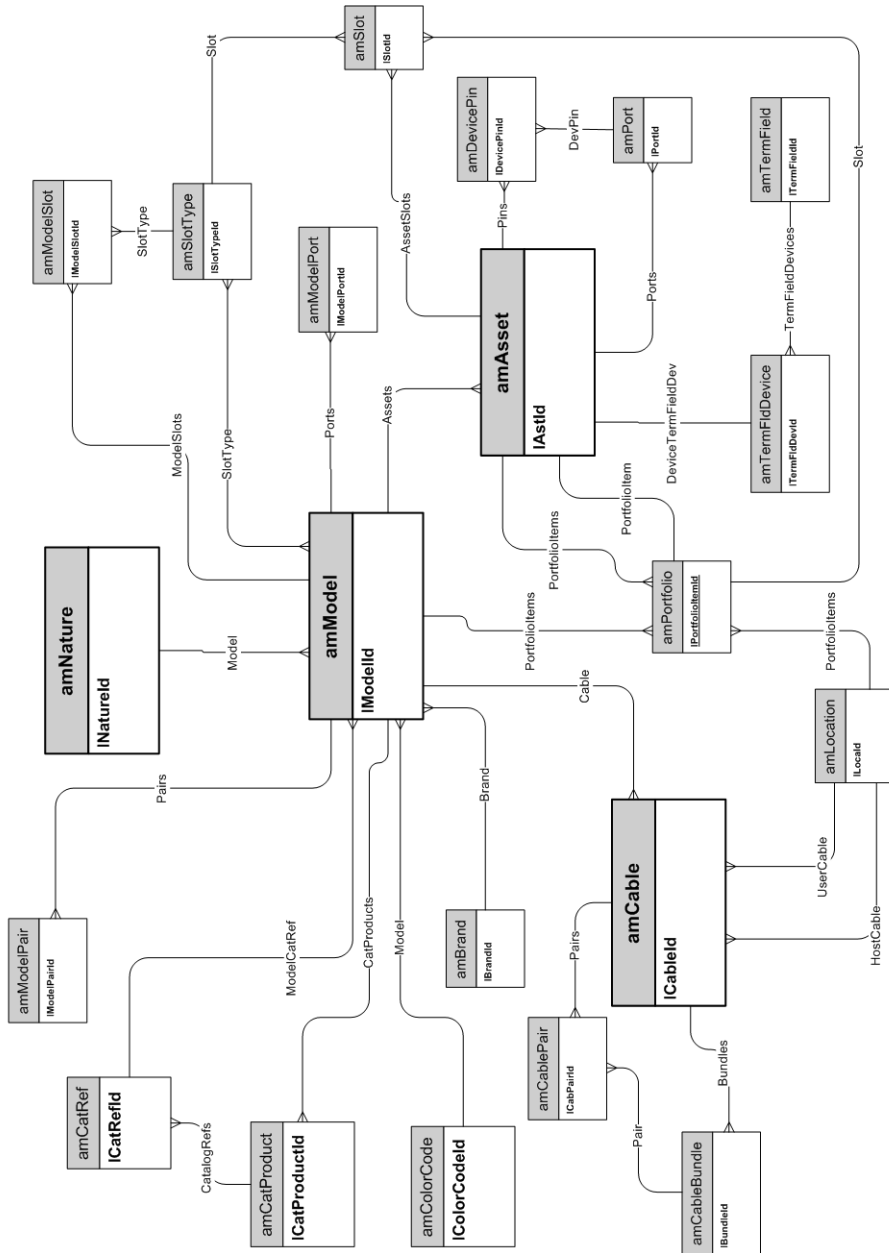


6 Cable and Circuit

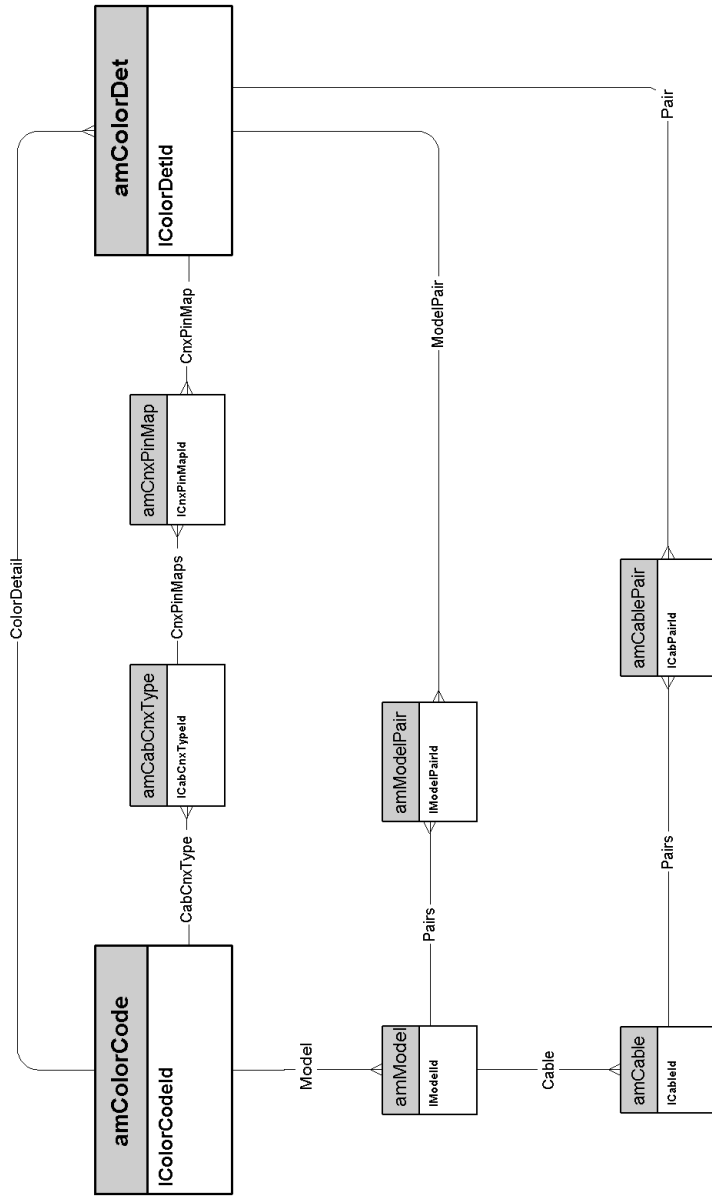
This chapter presents diagrams of the following physical data models:

- Cables and cable devices [page 40]
- Color codes [page 41]
- Label rules [page 42]
- Pair/conductor types [page 43]
- Cable duties [page 44]
- Slots [page 45]
- Topologies [page 46]
- Topology groups [page 47]
- Termination-field configurations [page 48]
- Cables and cable devices [page 40]

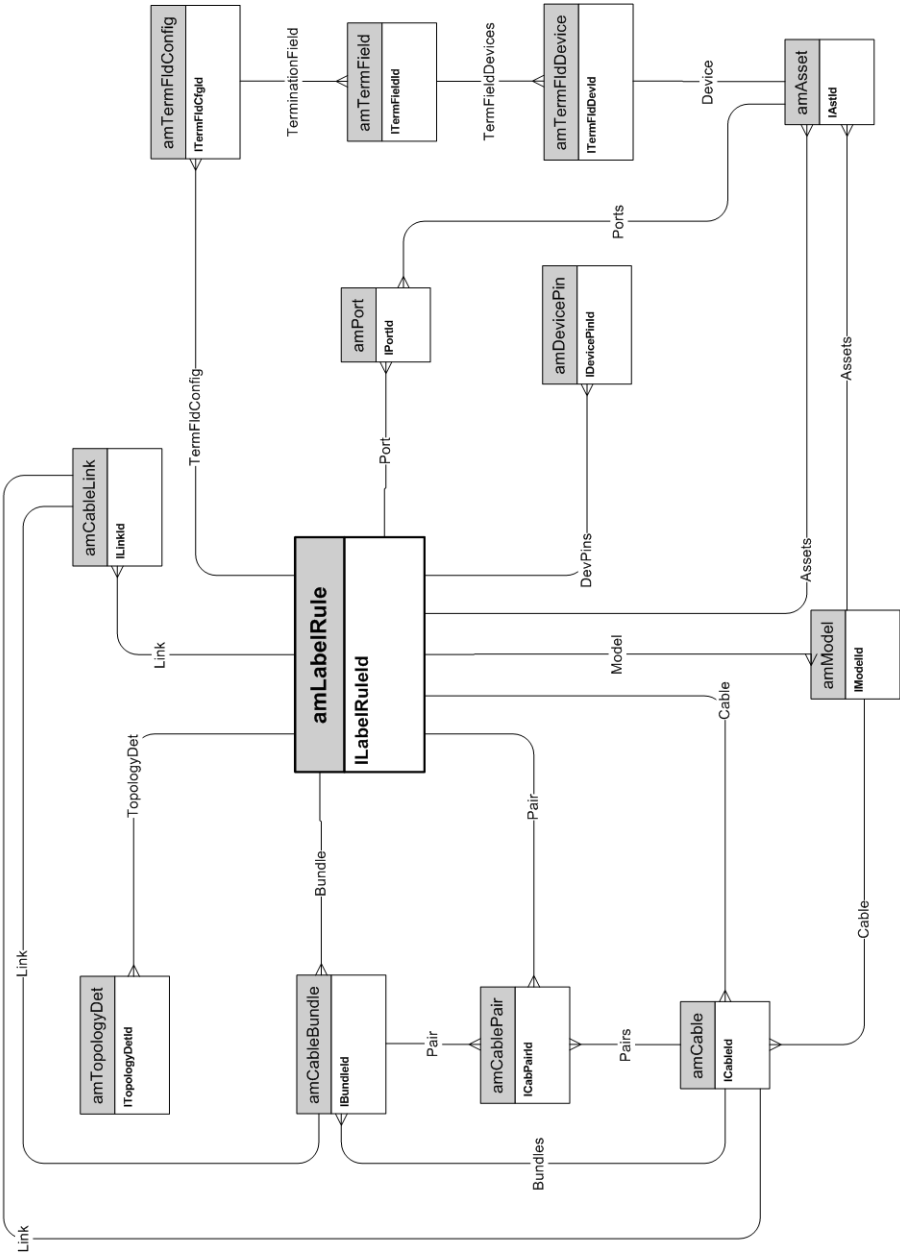
Cables and cable devices



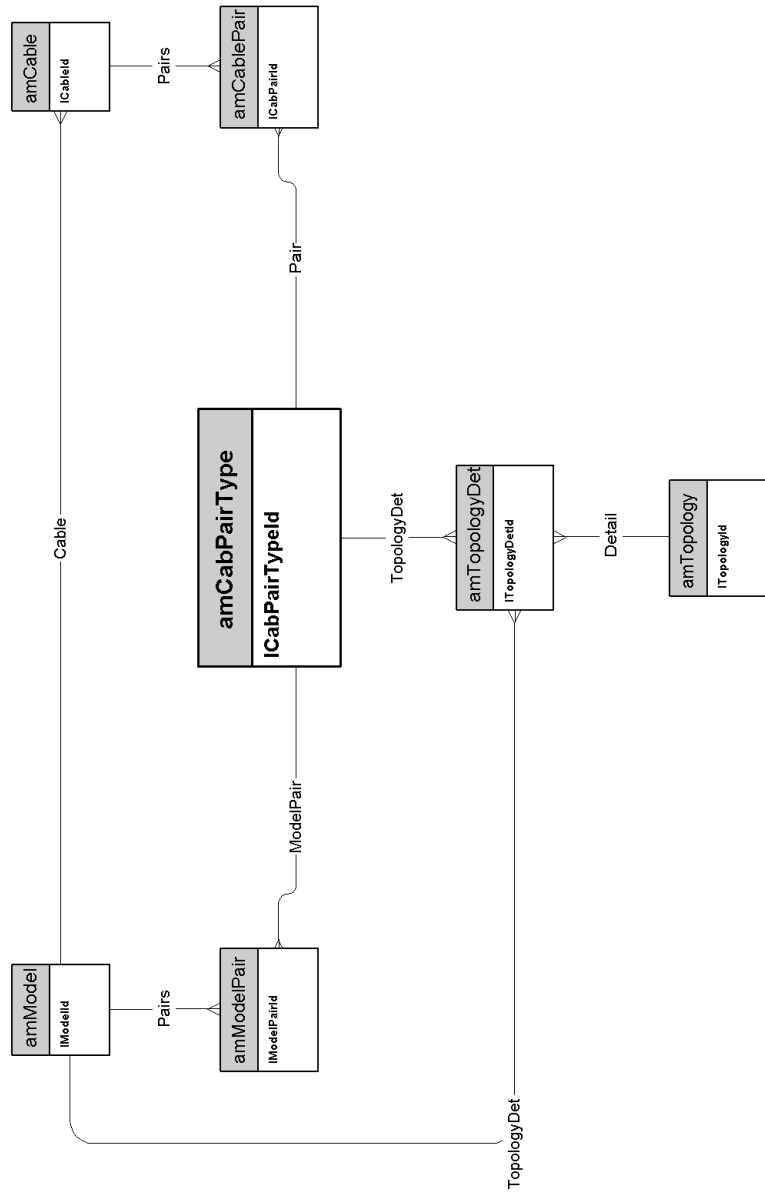
Color codes



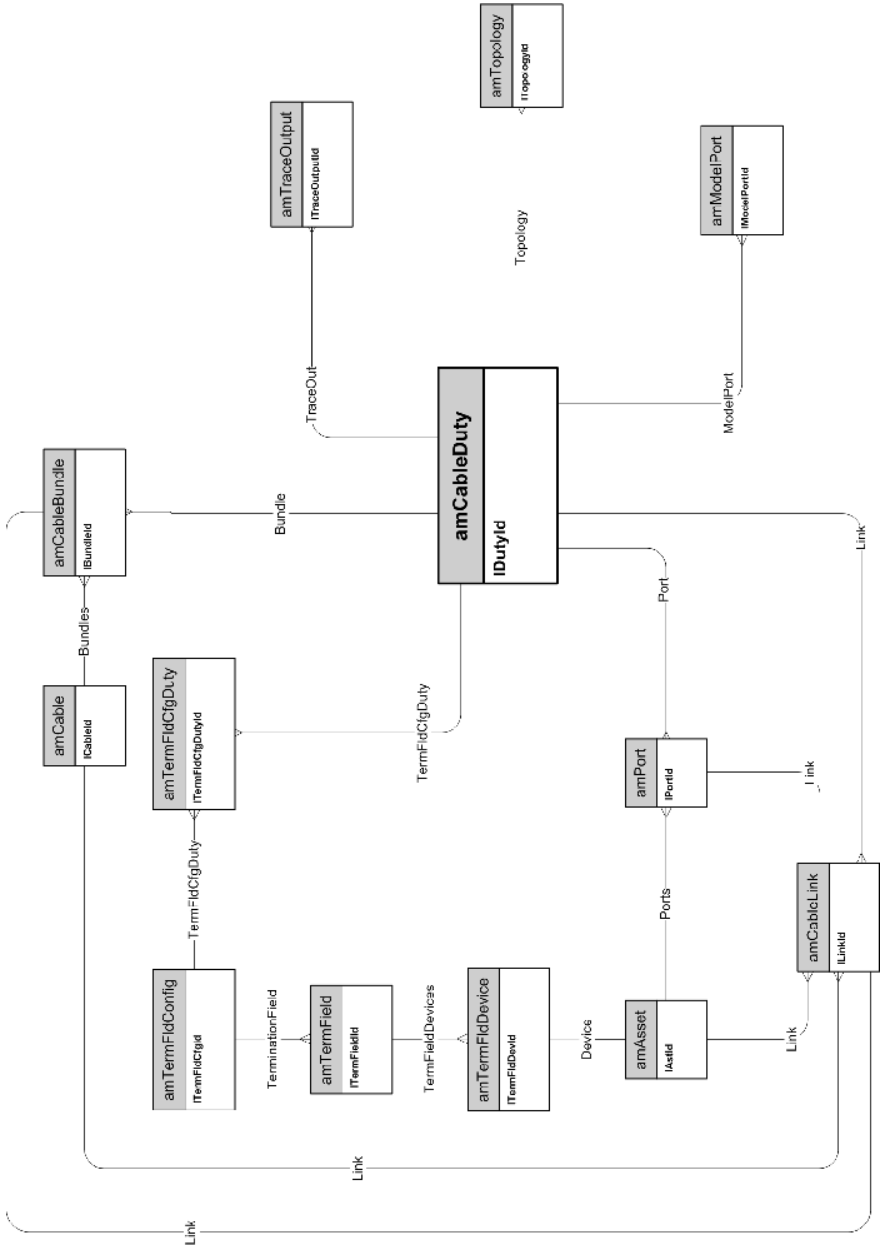
Label rules



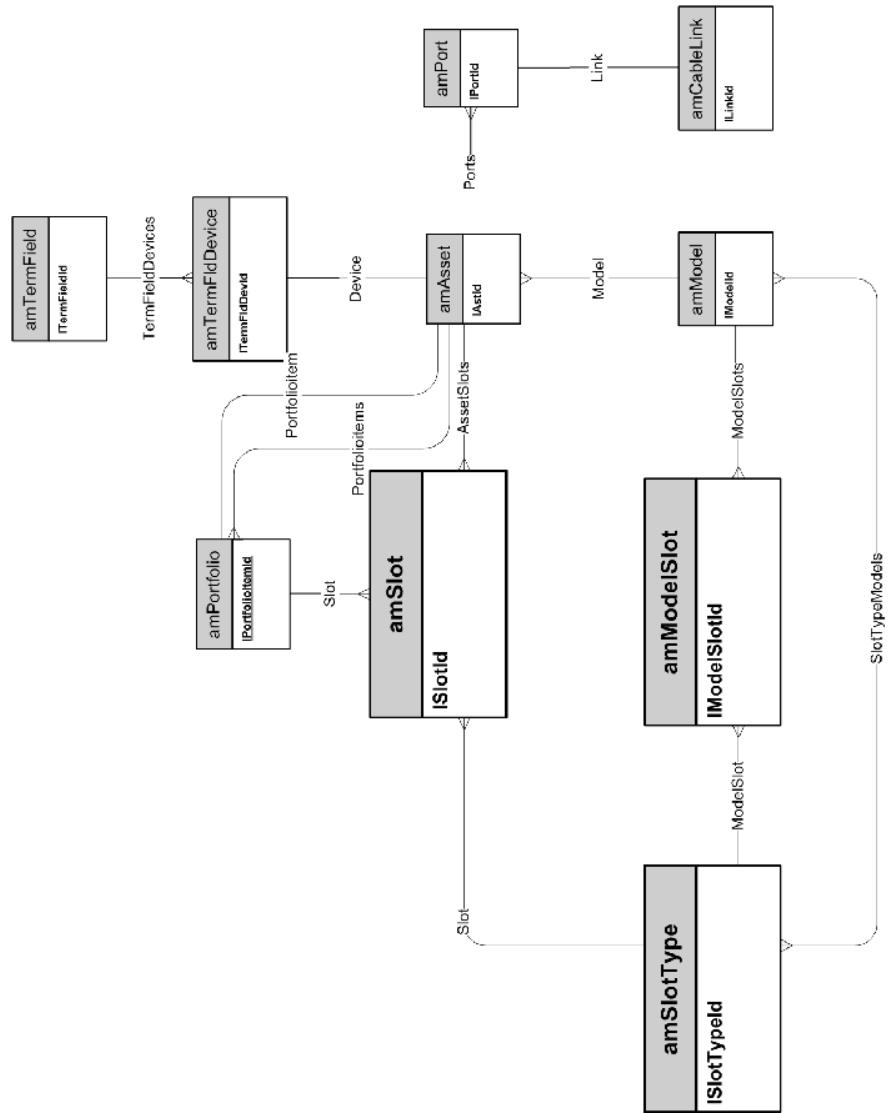
Pair/conductor types



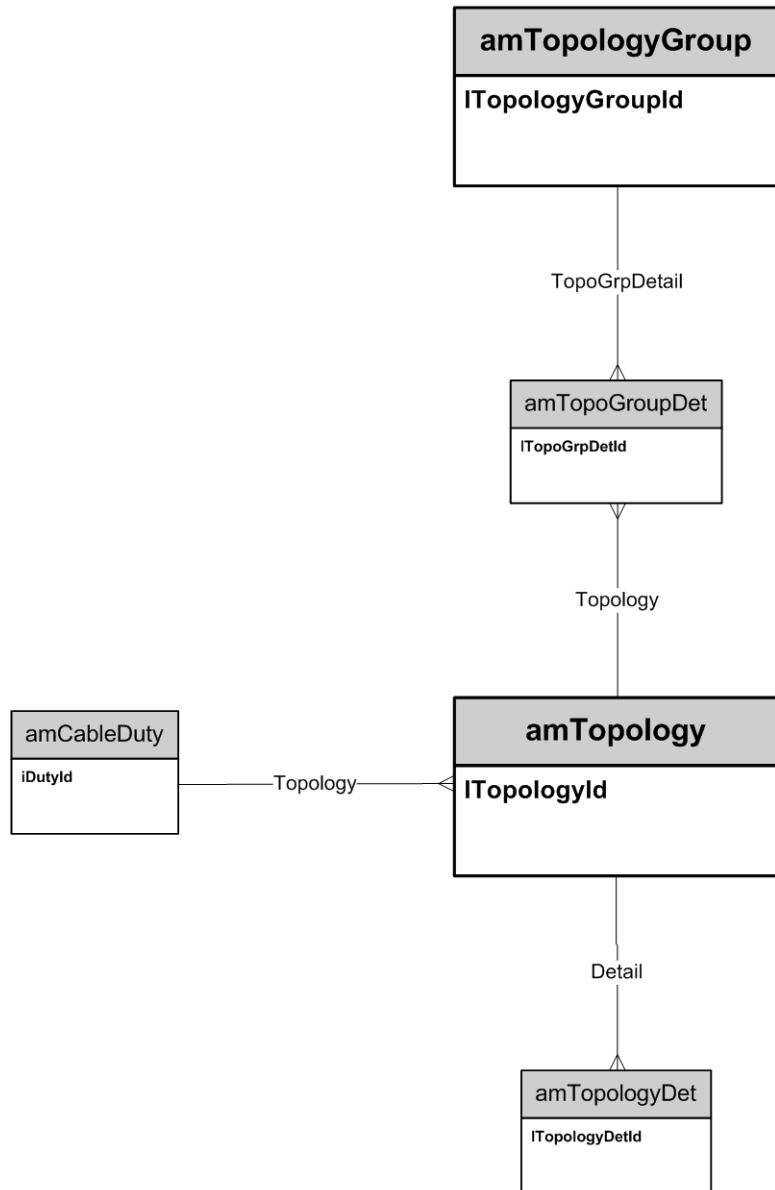
Cable duties



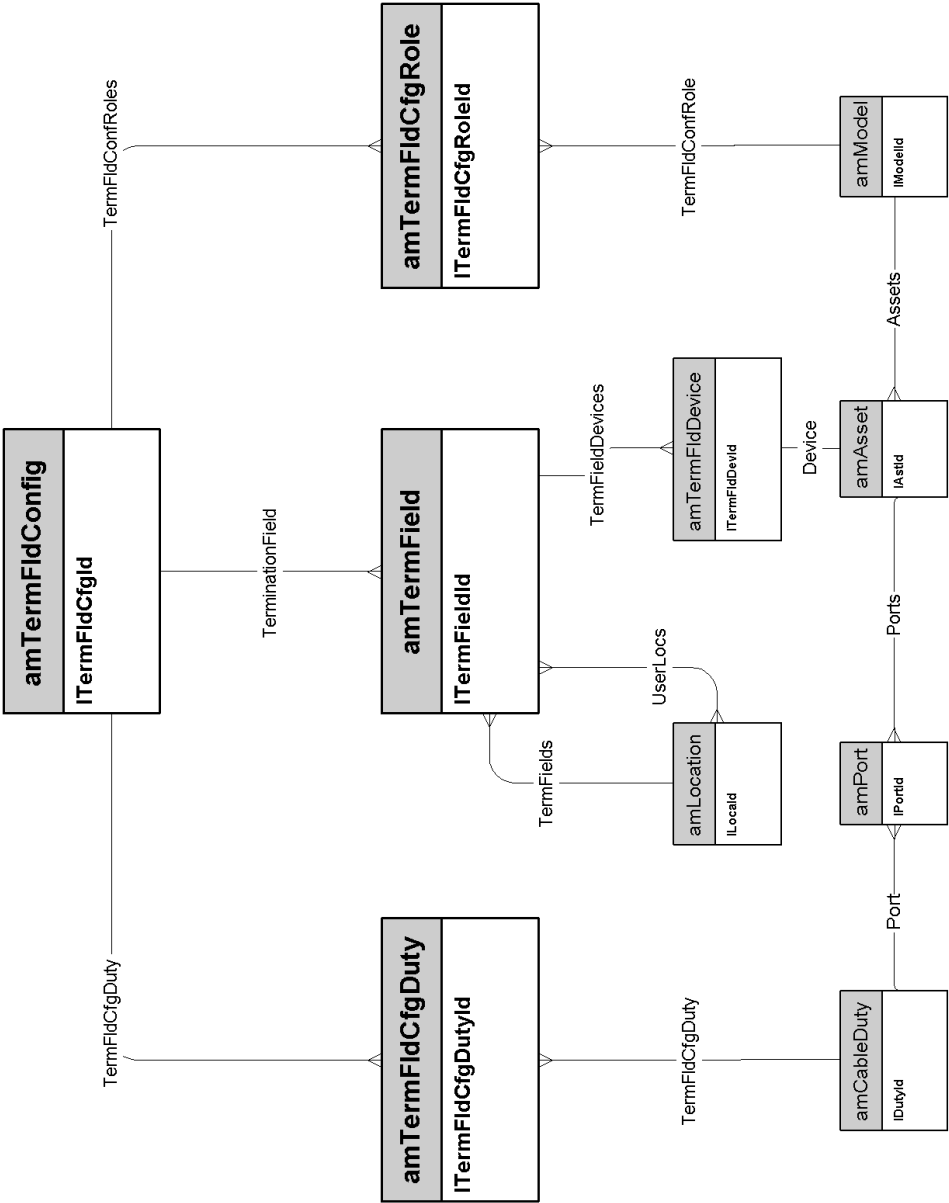
Slots



Topology groups



Termination-field configurations

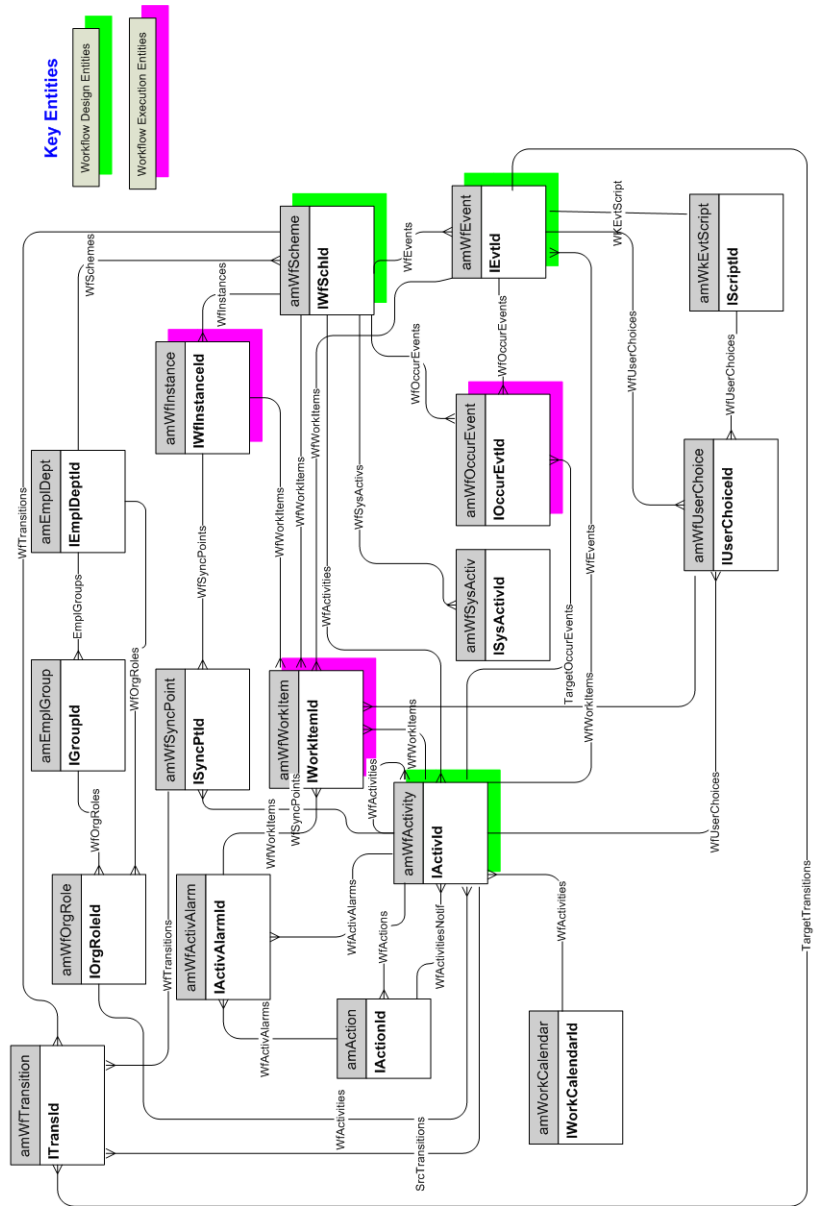


7 Administration

This chapter presents the diagram of the following physical data model:

- [Access to the database](#) [page 52]
- [Workflows](#) [page 53]

Workflows

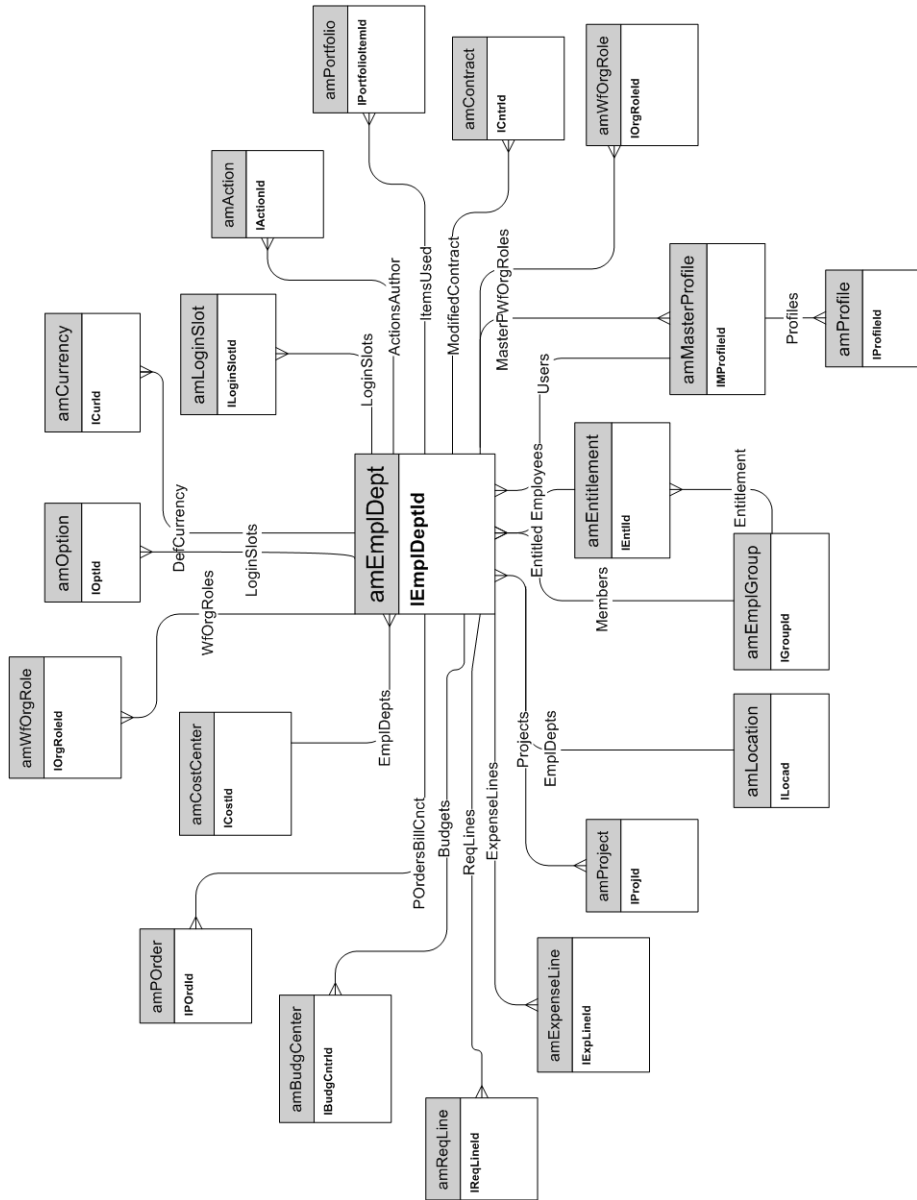


8 Organization

This chapter presents the diagram of the following physical data model:

- ◆ [Employees and Departments](#) [page 56]

Employees and Departments



9 Catalog

This chapter presents the diagram of the following physical data model:

- ◆ [Catalog](#) [page 58]

Catalog

