

Astra® LoadTest™
Installation Guide
Version 4.5



MERCURY INTERACTIVE

Astra LoadTest Installation Guide, Version 4.5

© Copyright 2000 by Mercury Interactive Corporation

All rights reserved. All text and figures included in this publication are the exclusive property of Mercury Interactive Corporation, and may not be copied, reproduced, or used in any way without the express permission in writing of Mercury Interactive. Information in this document is subject to change without notice and does not represent a commitment on the part of Mercury Interactive.

Mercury Interactive may have patents or pending patent applications covering subject matter in this document. The furnishing of this document does not give you any license to these patents except as expressly provided in any written license agreement from Mercury Interactive.

WinRunner, XRunner, LoadRunner, TestDirector, TestSuite, WebTest, and Astra are registered trademarks of Mercury Interactive Corporation in the United States and/or other countries. Astra SiteManager, Astra SiteTest, Astra QuickTest, Astra LoadTest, Topaz, RapidTest, QuickTest, Visual Testing, Action Tracker, Link Doctor, Change Viewer, Dynamic Scan, Fast Scan, and Visual Web Display are trademarks of Mercury Interactive Corporation in the United States and/or other countries.

This document also contains registered trademarks, trademarks and service marks that are owned by their respective companies or organizations. Mercury Interactive Corporation disclaims any responsibility for specifying which marks are owned by which companies or organizations.

If you have any comments or suggestions regarding this document, please send them via e-mail to documentation@mercury.co.il.

Mercury Interactive Corporation
1325 Borregas Avenue
Sunnyvale, CA 94089 USA

Table of Contents

Before You Install	1
Registering Your Copy of Astra LoadTest.....	1
System Requirements	2
Installing Astra LoadTest	3
Uninstalling Astra LoadTest	13

Before You Install

Welcome to Astra LoadTest, Mercury Interactive's functional testing tool for Web applications using Windows 2000 and Windows NT 4.0. This guide describes everything you need to know about how to install Astra LoadTest on a network or standalone computer.

Registering Your Copy of Astra LoadTest

Register your copy of Astra LoadTest to become a licensed user with all rights and privileges. Registered users can access technical support and information on all Mercury Interactive products, and are eligible for updates and upgrades.

To register your copy of Astra LoadTest, fill out the Mercury Interactive Software Registration card.

- ▶ If you are in the United States, fill out the USA Owners portion of the card. Send the card to the Sunnyvale, California address printed on the card. No postage is necessary.
- ▶ If you are outside the United States, fill out the non-USA portion of the registration card and mail it to the appropriate international address using correct postage.

If your address changes, notify Mercury Interactive or your local representative, so that you can continue to receive product information and updates.

Note: You can also register your copy of Astra LoadTest on the Mercury Interactive Customer Support site (<http://support.mercuryinteractive.com>).

System Requirements

In order to successfully run Astra LoadTest, you need the following minimum system requirements:

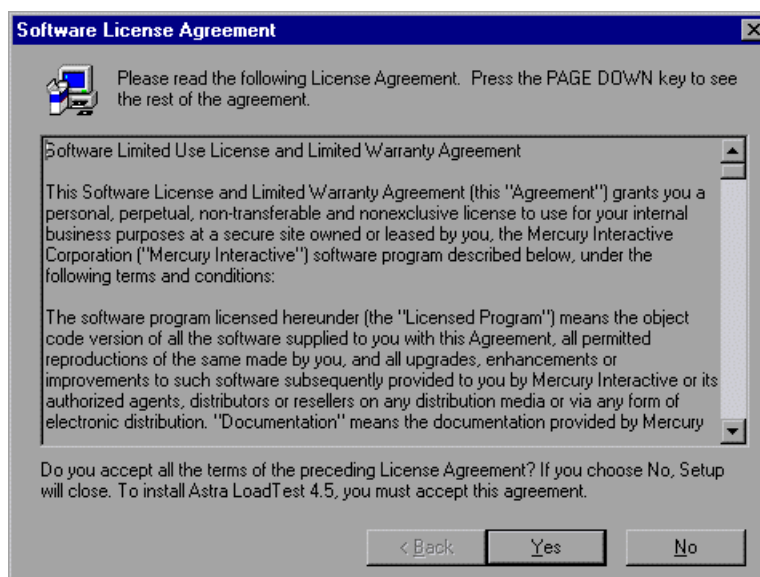
Computer/Processor	An IBM-PC or compatible with a Pentium® 166 MHz or higher micro processor
Operating System	Windows 2000, Windows NT® version 4.0 or higher
Memory	Minimum 32 MB RAM
Free Hard Disk Space	Minimum 70 MB
Browser	Internet Explorer 4.x or 5.x

Installing Astra LoadTest

Your Astra LoadTest CD-ROM includes a setup program that guides you through the installation process.

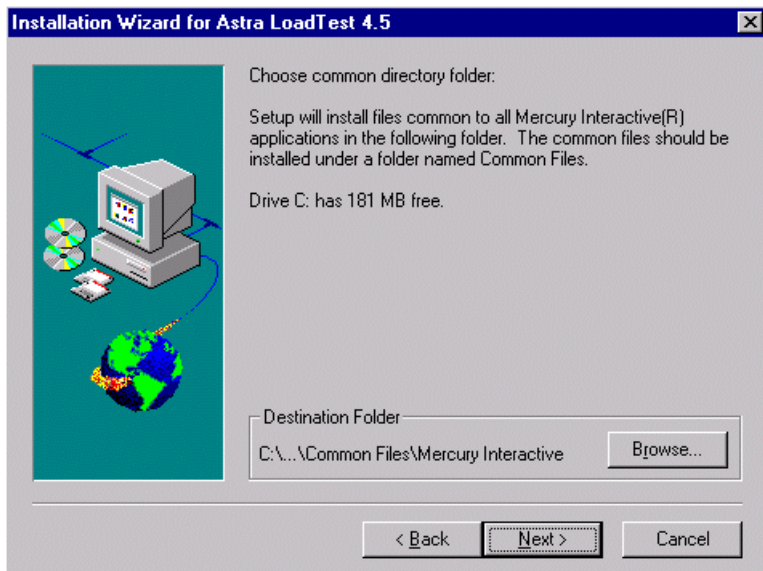
To install Astra LoadTest on your computer:

- 1 Insert the CD-ROM into the CD-ROM drive. If you are installing from a network drive, connect to it.
- 2 Select **Run** on the **Start** menu.
- 3 Type the location you are installing from, and `setup.exe`. For example, type `d:\setup.exe`.
- 4 Click **OK**. The Astra LoadTest setup program starts.
- 5 Read the agreement in the **Software License Agreement** screen.



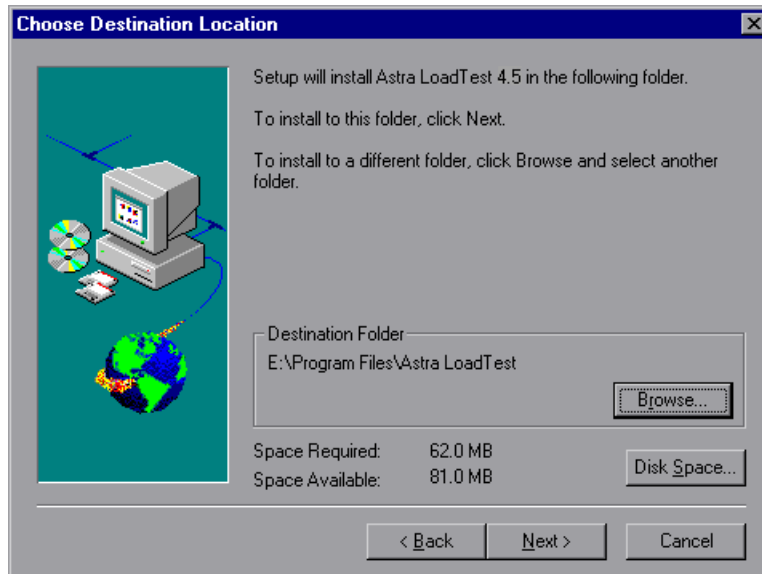
To install Astra LoadTest, you must accept the terms of the license agreement by clicking **Yes**. If you click **No**, the setup program will close.

- 6 In the **Installation Wizard for Astra LoadTest 4.5** screen, choose a common directory folder in which to install files common to all Mercury Interactive applications.



Click **Next** to proceed.

- 7 In the **Choose Destination Location** screen, choose the **Destination Folder** in which you want to install Astra LoadTest.

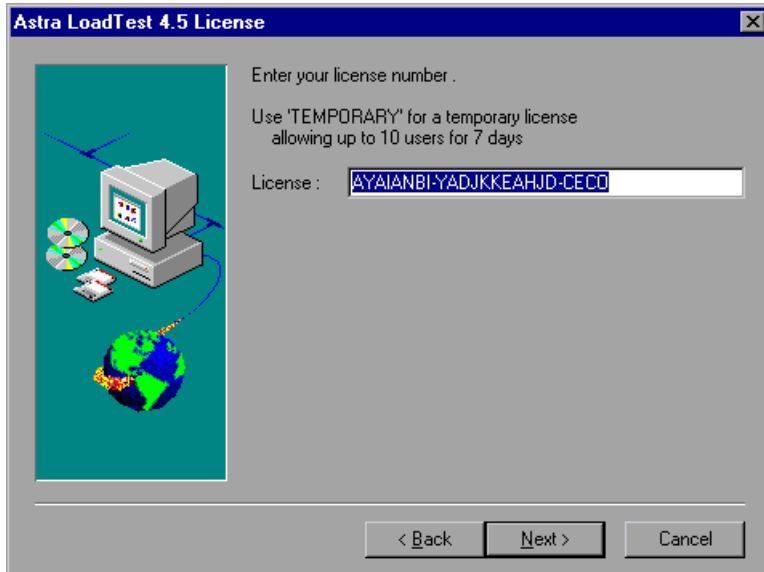


To select a different location, click **Browse**, choose a folder, and then click **OK**.

You should install Astra LoadTest to a drive with at least 60 MB of free disk space. To check the space available on a disk drive, click **Disk Space**.

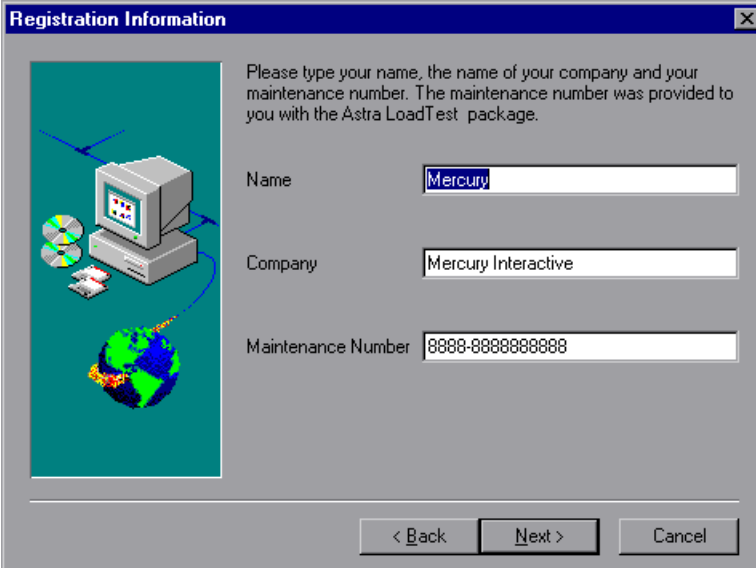
Click **Next** to proceed.

- 8 In the **Astra LoadTest 4.5 License** screen, type your license number, provided to you with the Astra LoadTest package.



Click **Next** to proceed.

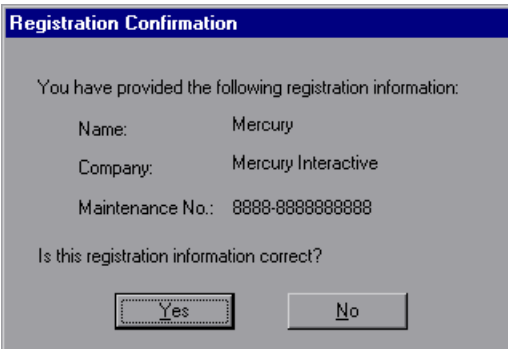
- 9 In the **Registration Information** screen, type your name, the name of your company, and the maintenance number you received with the Astra LoadTest package.



The screenshot shows a dialog box titled "Registration Information" with a close button (X) in the top right corner. On the left side, there is a graphic of a computer monitor, a CD-ROM, and a globe. The main text reads: "Please type your name, the name of your company and your maintenance number. The maintenance number was provided to you with the Astra LoadTest package." Below this text are three input fields: "Name" containing "Mercury", "Company" containing "Mercury Interactive", and "Maintenance Number" containing "8888-8888888888". At the bottom, there are three buttons: "< Back", "Next >", and "Cancel".

Click **Next** to proceed.

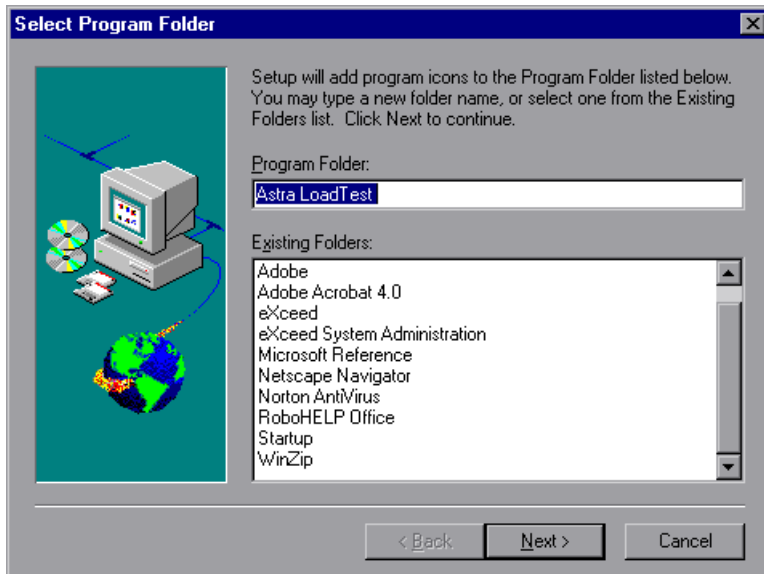
- 10 The **Registration Confirmation** screen asks you if the registration information you provided is correct.



The screenshot shows a dialog box titled "Registration Confirmation". The text inside reads: "You have provided the following registration information:" followed by a list: "Name: Mercury", "Company: Mercury Interactive", and "Maintenance No.: 8888-8888888888". Below this list, it asks "Is this registration information correct?". At the bottom, there are two buttons: "Yes" and "No".

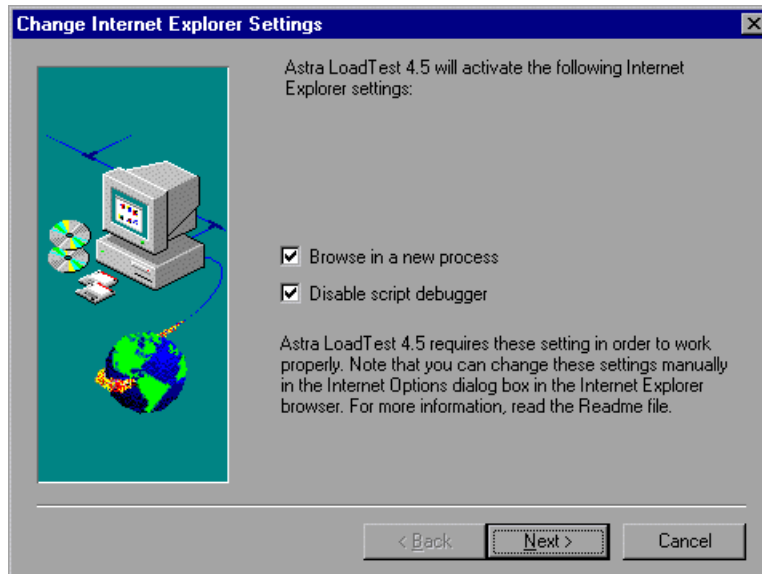
Click **Yes** to confirm the registration information.

- 11** In the **Select Program Folder** screen, specify a program folder for the Astra LoadTest icons, or accept the default folder, Astra LoadTest.



Click **Next** to proceed.

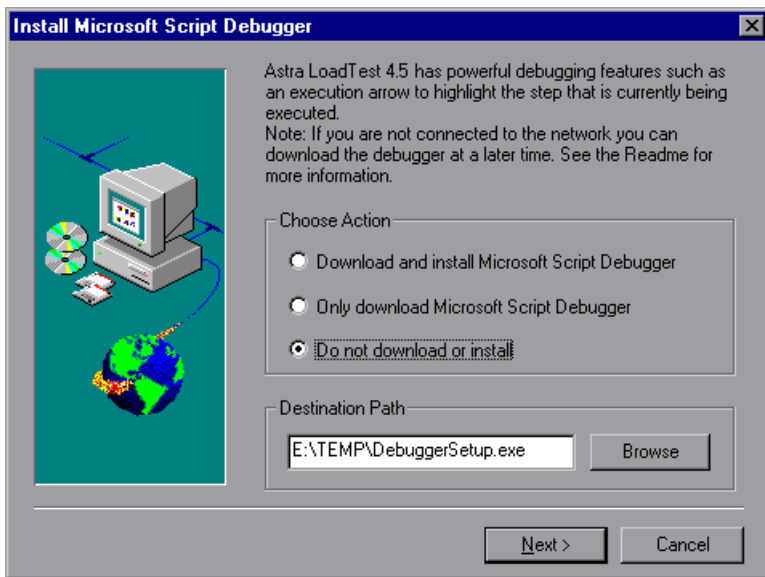
- 12** The **Change Internet Explorer Settings** screen requires you to change the Microsoft Internet Explorer settings.



Click **Next** to proceed.

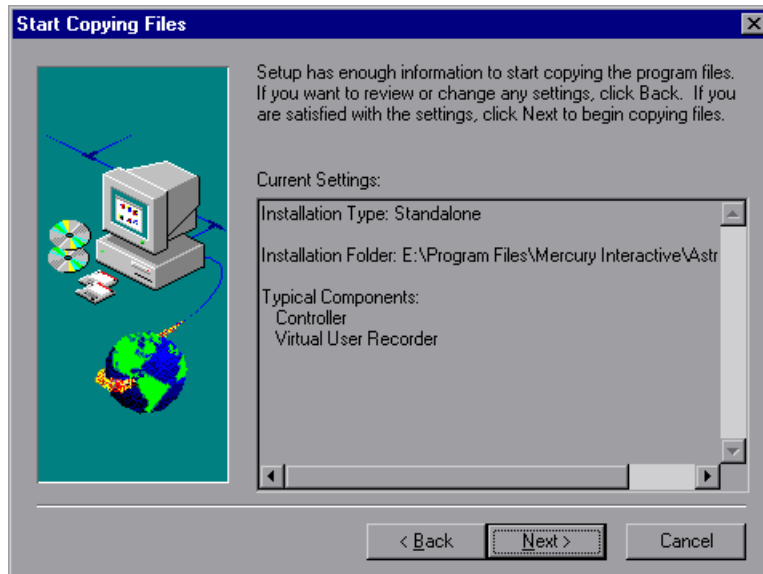
In some cases, you must change your settings manually in your Internet Explorer Browser. In such a case, you will be prompted with another dialog box. Click **OK** to continue to the next screen.

- 13** If Microsoft Script Debugger is not installed on your machine, the **Install Microsoft Script Debugger** screen will appear. Select the second or third available option.



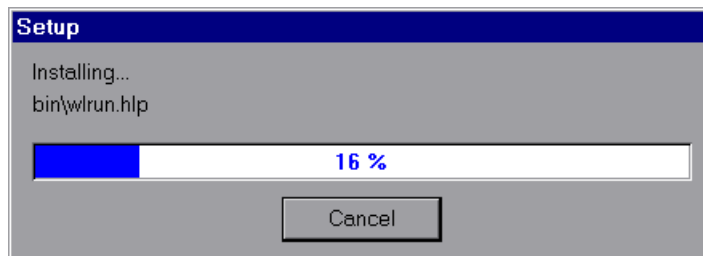
Click **Next** to proceed.

- 14** In the **Start Copying Files** screen, you can view the **Current Settings** for the installation of Astra LoadTest.

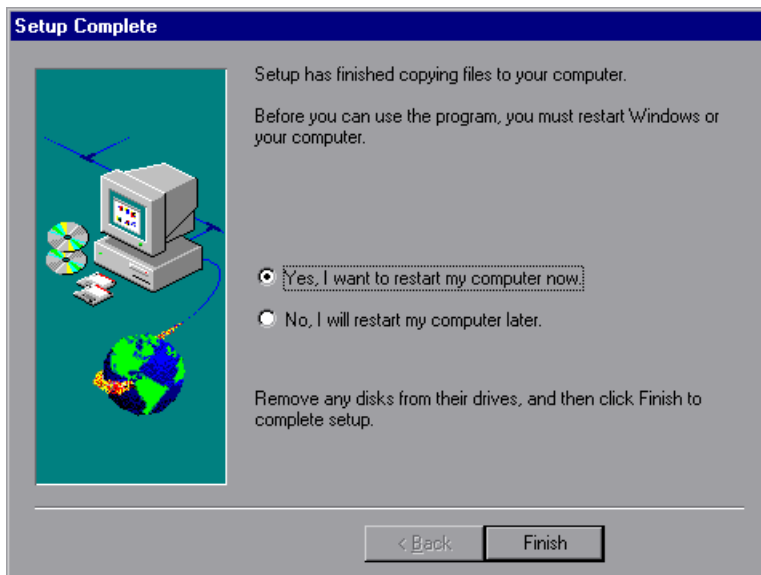


If you want to change the settings, click **Back**. To begin copying the files, click **Next**.

The installation process begins. To pause or quit the installation process, click **Cancel**.



- 15** The **Setup Complete** screen prompts you to restart your computer. You can delay restarting your computer until a later point, however, you must restart your computer before you use Astra LoadTest.



Click **Finish** to complete the setup process.

Note: You should review the Readme file for last minute technical and troubleshooting information. To open your Readme file, click **Programs > Astra LoadTest > ReadMe** in the **Start** menu.

Uninstalling Astra LoadTest

Your Astra LoadTest installation includes an uninstall program which uninstalls Astra LoadTest software and files from your computer and removes Astra LoadTest shortcuts from your Start menu.

To uninstall Astra LoadTest:

- 1** Choose **Programs > Astra LoadTest > Uninstall** on the **Start** menu.
- 2** A message asks you to confirm your decision to uninstall Astra LoadTest. Click **Yes** to uninstall Astra LoadTest. Otherwise, click **No** to keep Astra LoadTest installed on your computer.

The Uninstall Shield window opens.

- 3** You may be prompted to remove shared files that are not being used by any program. If you are not sure what to do, click **No to All**.

The Uninstall Shield removes Astra LoadTest from your computer.

- 4** When the Uninstall program is completed, the OK button is enabled. Click **OK**.

Note: You cannot uninstall Astra LoadTest immediately after you have installed the program, without first rebooting your computer.



MERCURY INTERACTIVE

Mercury Interactive Corporation

1325 Borregas Avenue
Sunnyvale, CA 94089 USA

Main Telephone: (408) 822-5200

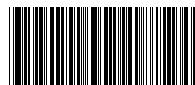
Sales & Information: (800) TEST-911

Customer Support: (877) TEST-HLP

Fax: (408) 822-5300

Home Page: www.mercuryinteractive.com

Customer Support: support.mercuryinteractive.com



AL71 G4 51 01