

HP OpenView JMX Metric Builder for BEA WebLogic Workshop

Installation Guide

Version: Tech Preview

Windows® 2000/XP



September 2004

© Copyright 2004 Hewlett-Packard Development Company, L.P.

Legal Notices

Warranty

Hewlett-Packard makes no warranty of any kind with regard to this manual, including, but not limited to, the implied warranties of merchantability and fitness for a particular purpose. Hewlett-Packard shall not be held liable for errors contained herein or direct, indirect, special, incidental or consequential damages in connection with the furnishing, performance, or use of this material.

A copy of the specific warranty terms applicable to your Hewlett-Packard product can be obtained from your local Sales and Service Office.

Restricted Rights Legend

Use, duplication, or disclosure by the U.S. Government is subject to restrictions as set forth in subparagraph (c)(1)(ii) of the Rights in Technical Data and Computer Software clause in DFARS 252.227-7013.

Hewlett-Packard Company
United States of America

Rights for non-DOD U.S. Government Departments and Agencies are as set forth in FAR 52.227-19(c)(1,2).

Copyright Notices

© Copyright 2004 Hewlett-Packard Development Company, L.P., all rights reserved.

No part of this document may be copied, reproduced, or translated into another language without the prior written consent of Hewlett-Packard Company. The information contained in this material is subject to change without notice.

Trademark Notices

Microsoft® is a U.S. registered trademark of Microsoft Corp.

Windows® and MS Windows® are U.S. registered trademarks of Microsoft Corp.

Java® is a U.S. registered trademark of Sun Microsystems, Inc.

All other product names are the property of their respective trademark or service mark holders and are hereby acknowledged.

HP OpenView JMX Metric Builder for BEA WebLogic Workshop Overview

Your application's health is expressed by the MBeans you have included in the application. HP provides the OpenView JMX Metric Builder for BEA WebLogic Workshop to allow you to easily view MBeans hosted on the WebLogic MBean server and see their attributes. The builder lets you define the metrics, based on MBean attributes, that you want the WebLogic Server Smart Plug-In (WLS-SPI) to collect.

BEA WebLogic Workshop (WLW) is BEA's Integrated Developers Environment (IDE), tailored for BEA's WebLogic application server developers. HP OpenView JMX Metric Builder for BEA WebLogic Workshop is an application instrumentation extension for WLW.

System Requirements

Before installing HP OpenView JMX Metric Builder for BEA WebLogic Workshop, you must have already installed:

- **BEA WebLogic Workshop 8.1 with SP2** (or greater), available from <http://commerce.bea.com/showproduct.jsp?family=WLW&major=8.1&minor=2>
- **Java® Developer's Kit** version 1.4.1 (or greater), available from <http://java.sun.com>

Installing HP OpenView JMX Metric Builder for BEA WebLogic Workshop

Before installing HP OpenView JMX Metric Builder for BEA WebLogic Workshop, make sure all the system requirements are met.

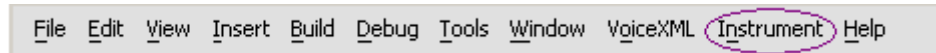
To install HP OpenView JMX Metric Builder for BEA WebLogic Workshop, run `WLSSPI-JMXBuilder.exe` and follow the instructions.

Uninstalling HP OpenView JMX Metric Builder for BEA WebLogic Workshop

To uninstall HP OpenView JMX Metric Builder for BEA WebLogic Workshop, from the Start menu, select **Control Panel**. Double-click on **Add or Remove Programs**. Select **HP OpenView JMX Metric Builder for BEA WebLogic Workshop** and click **Change/Remove**.

Launching HP OpenView JMX Metric Builder for BEA WebLogic Workshop

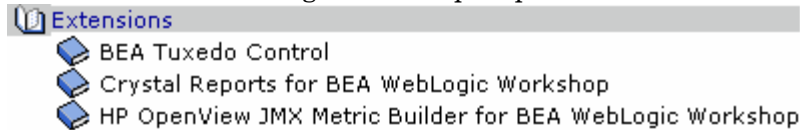
Once HP OpenView JMX Metric Builder for BEA WebLogic Workshop has been installed, start BEA WebLogic Workshop. You know that HP OpenView JMX Metric Builder for BEA WebLogic Workshop installed successfully if you see the **Instrument** menu in the menu bar:



Viewing the Online Help

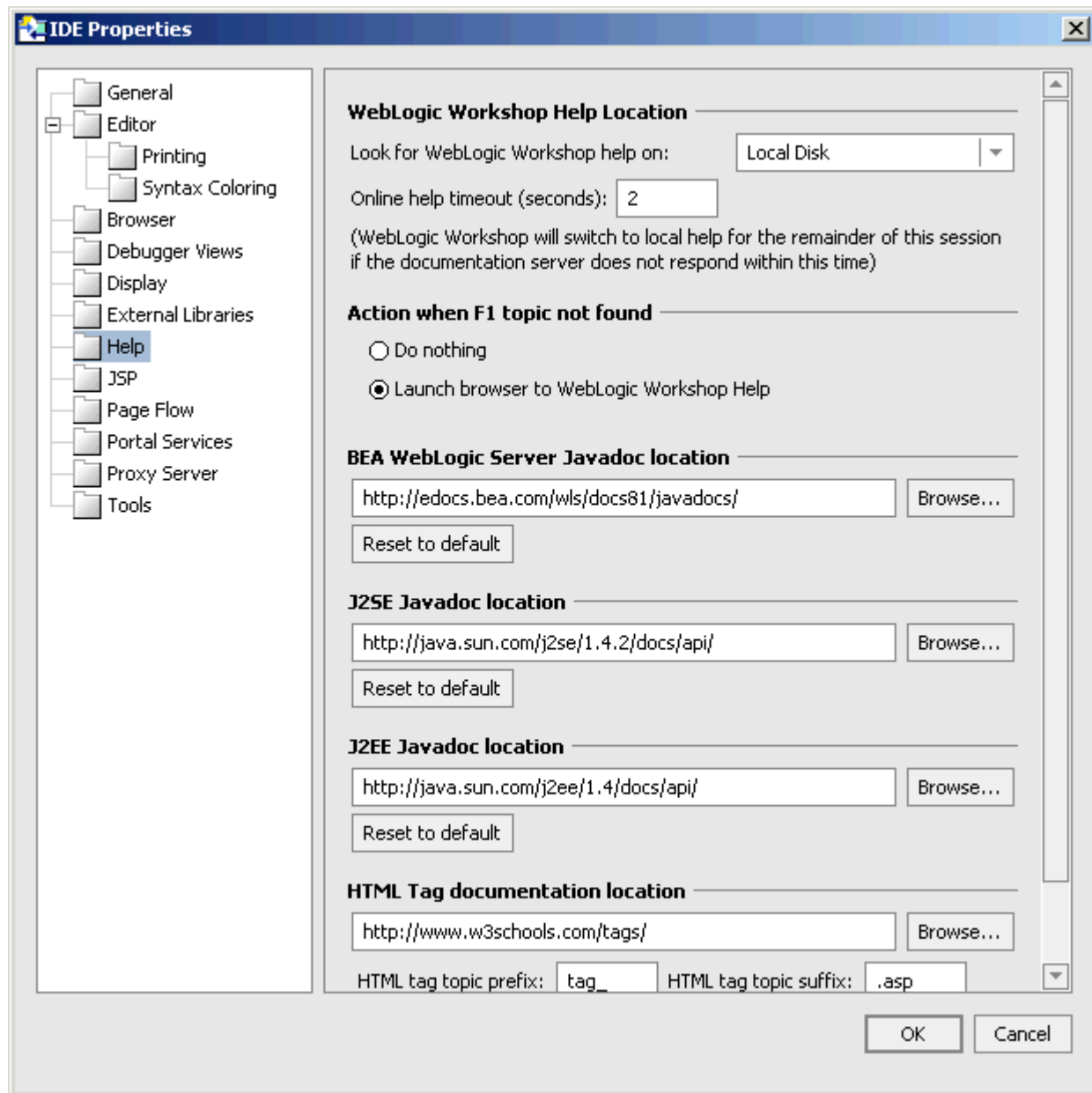
On WLW with SP2

To view the online help for the HP OpenView JMX Metric Builder, select the *Extensions* book in the BEA WebLogic Workshop help table of contents.



On WLW with SP3

In this version of WLW, by default online help is set to be viewed from the remote BEA Web site. In order to view the online help for HP OpenView JMX Metric Builder, you must reconfigure the IDE properties for help. To do this, select **Tools > IDE Properties** from the WLW menu bar. Select **Help** in the properties dialog. In the window to the right, there is the **WebLogic Workshop Help Location** pane. Below it there is the **Look for WebLogic Workshop help on:** field. Select **Local Disk** from the pull-down menu and click **OK**.



Once you have reconfigured the help properties to look at the local disk for online help, select the *User-Installed Extensions* book in the BEA WebLogic Workshop help table of contents. Note this is different from the SP2 book location.

- [-] [U] **User-Installed Extensions**
 - [+] [U] BEA Tuxedo Control
 - [+] [U] Crystal Reports for BEA WebLogic Workshop
 - [+] [U] HP OpenView JMX Metric Builder for BEA WebLogic Workshop

Getting Started

To help you understand the basic functionality and features of the OpenView JMX Metric Builder for BEA WebLogic Workshop, consider working through the Tutorial in the HP OpenView JMX Metric Builder online help.

When you are ready to instrument your own J2EE application, refer to the other sections in the online help. Once the JMX Metric Builder is launched, it also provides integrated online help on how to use its features.

If you have questions or comments about the HP OpenView JMX Metric Builder for BEA WebLogic Workshop, please email the development team at users@ovo-jmx-wlw-extension.hpsen.com.