

HP OpenView Storage Data Protector

Release Notes for HP OpenView Operations for UNIX Integration

Version: A.05.05

HP-UX, Solaris and Windows



Manufacturing Part Number: None (PDF-only)

September 2004

© Copyright 2001-2004 Hewlett-Packard Development Company, L.P.

Legal Notices

Warranty.

Hewlett-Packard makes no warranty of any kind with regard to this document, including, but not limited to, the implied warranties of merchantability and fitness for a particular purpose. Hewlett-Packard shall not be held liable for errors contained herein or direct, indirect, special, incidental or consequential damages in connection with the furnishing, performance, or use of this material.

A copy of the specific warranty terms applicable to your Hewlett-Packard product can be obtained from your local Sales and Service Office.

Restricted Rights Legend.

Use, duplication or disclosure by the U.S. Government is subject to restrictions as set forth in subparagraph (c)(1)(ii) of the Rights in Technical Data and Computer Software clause in DFARS 252.227-7013.

Hewlett-Packard Company
United States of America

Rights for non-DOD U.S. Government Departments and Agencies are as set forth in FAR 52.227-19(c)(1,2).

Copyright Notices.

©Copyright 2001-2004 Hewlett-Packard Development Company, L.P.

No part of this document may be copied, reproduced, or translated to another language without the prior written consent of Hewlett-Packard Company. The information contained in this material is subject to change without notice.

Trademark Notices.

Reproduction, adaptation, or translation of this document without prior written permission is prohibited, except as allowed under the copyright laws.

Adobe® is a trademark of Adobe Systems Incorporated.

HP-UX Release 10.20, HP-UX Release 11.00 and later (in both 32 and 64-bit configurations) on all HP 9000 computers are Open Group UNIX 95 branded products.

Java™ is a U.S. trademark of Sun Microsystems, Inc.

Oracle® is a registered U.S. trademarks of Oracle Corporation, Redwood City, California.

UNIX® is a registered trademark of The Open Group. .

Windows NT™ is a U.S. trademark of Microsoft Corporation. Microsoft®, MS-DOS®, Windows® and MS Windows® are U.S. registered trademarks of Microsoft Corporation.

All other product names are the property of their respective trademark or service mark holders and are hereby acknowledged.

1 HP OpenView Storage Data Protector Integration - Release Notes

Announcement

The following is for version A.05.05 of HP OpenView Storage Data Protector Integration.

The Data Protector Integration provides a solution to monitor Data Protector health, status and performance. It allows the user to proactively detect and solve technical issues with multiple Data Protector cells from a single console.

Data Protector is HP OpenView's backup product that provides reliable protection and high accessibility for data. It offers backup and restore functionality tailored for enterprise-wide and distributed environments.

Data Protector's component concept proves to be flexible in an environment where elements of the backup infrastructure are placed on different networked systems. It scales from a single system to thousands of systems on several sites. Multiple backup environments can be managed from a single management system (Cell Manager) and multiple administrators may access Data Protector using a graphical user interface (GUI) from various systems simultaneously.

HP OpenView Operations (OVO) is HP OpenView's operations and problem management product for multi-vendor systems. OVO is a distributed client/server solution to help system administrators detect, solve, and prevent problems occurring in networks, on systems, and in applications in a multi-vendor, enterprise-wide, and distributed environment. The client/server concept of OVO is based on agent processes running on managed nodes and management server processes running on a central management system. The agent processes collect and process data and events on the managed nodes, and forward relevant information as messages to the management server. The message is displayed in a browser on the management server and may be responded with an automatic action. Based on the HP OpenView Performance Agent performance data can be collected over a time interval, metrics can be displayed graphically and alarm messages are generated based on performance thresholds.

The HP OpenView Storage Data Protector Integration for Data Protector is a software package that instruments the OVO Agent running on one or more Data Protector Cell Managers to collect events, monitor logfiles and watch for essential processes to run. In the event of problems arising, messages are displayed in the OVO consoles message browser and the Data Protector service tree in the OVO Service Navigator displays any impact to Data Protector in general.

What's in This Version

The HP OpenView Storage Data Protector Integration comes with the following features:

- Centralized problem management using OVO agents at the Data Protector cell manager. The use of a central OVO management server for multiple Data Protector cell managers avoids duplicated administrative effort
- Real-time event and configuration information - including on-line instructions - for fast problem resolution
- Powerful monitors to detect potential problem areas and to keep track of Data Protector events
- Performance data collectors to detect Data Protector performance bottlenecks
- Performance data collection, monitoring, and reporting
- Central data repository for storing event records and action records for all managed Data Protector cell managers
- Integrated Data Protector GUI for managing multiple Data Protector cells from a single point, the OVO Management Server.

Known Problems and Workarounds

There are no known problems in HP OpenView Storage Data Protector Integration, version A.05.05.

Compatibility Information and Installation Requirements

This section lists the software and hardware prerequisites that you must fulfil for the management server and managed nodes, before you install HP OpenView Storage Data Protector Integration, version A.05.05.

The HP OpenView Storage Data Protector Integration is used to monitor and manage the health and performance of Data Protector environments. You can manage one or more Data Protector cells with the HP OpenView Storage Data Protector Integration. It should only be installed in an environment consisting of:

- One or more systems running OVO management server
- One or more OVO agents running on systems with the Data Protector Cell manager

It is only guaranteed to work in these environments.

Before starting the Data Protector Integration installation process, make sure that the following requirements are met:

- Ensure that your system meets all requirements, as detailed in “Supported Platforms and Installation Prerequisites” on page 8.
- For each Data Protector server, note:
 - an Data Protector administrator ‘s username
 - the password assigned to the user.

Supported Platforms and Installation Prerequisites

The HP OpenView Storage Data Protector Integration is used to monitor and manage the health and performance of Data Protector environments. You can manage one or more Data Protector cells with the HP OpenView Storage Data Protector Integration. It should only be installed in an environment consisting of:

- One or more systems running OVO management server
- OVO agent running on systems with the Data Protector Cell manager

It is only guaranteed to work in these environments.

Before starting the Data Protector Integration installation process, make sure that the following requirements are met:

Data Protector Supported Versions

The Data Protector Integration is designed to work with HP OpenView Storage Data Protector, version 5.x on the following platforms:

Table 1-1 HP OpenView Storage Data Protector Availability

Operating System	Data Protector Version		
	5.0	5.1	5.5
HP-UX 11.00	✓	✓	✓
HP-UX 11.11	✓	✓	✓
HP-UX 11.2x		✓	✓
Solaris 7	✓	✓	✓
Solaris 8	✓	✓	✓
Solaris 9 (OVO A.07.10 English Agent only)		✓	✓
Microsoft Windows NT 4.0 with SP6A (Workstation, Server and Enterprise Edition)	✓	✓	✓
Microsoft Windows 2000 with SP3 (Professional, Server, Advanced Server, Data Center)	✓	✓	✓
Microsoft Windows XP Professional (32 bit). Microsoft Windows Server 2003 (32 bit).		✓	✓

OVO Management Server System

HP OpenView Operations management servers are supported on the following platforms. The OVO server can run on a different host system from the system where the Data Protector Cell Manager is installed.

HP OpenView Operations and HP OpenView Service Navigator is installed and configured on a system running one of the following Operating systems:

Table 1-2 OVO Management Server Supported Versions

OVO version ^a Operating System	OVO 6.x and Service Navigator 6.x	OVO 7.1 including Service Navigator
HP-UX 11.00	✓	✓
HP-UX 11.11	✓	✓
HP-UX 11.2x	✓	✓
Solaris 7	✓	✓
Solaris 8	✓	✓
Solaris 9	✓	✓

a. English, and Japanese.

Please ensure that the following minimum patches are installed.

Table 1-3 Patches for OVO and Service Navigator (version A.06.00)^a

Operating System	Patch Number	Description
HP-UX 11.x	PHSS_27342	Consolidated OVO Service Navigator patch A.06.13
	PHSS_28063	Intermediate OVO Server patch A.06.14
	PHSS_28177	HP-UX 11.00/11.11 OVO Agent A.06.12
	PHSS_28076	Java GUI client A.06.14.1
	PHSS_27298	Solaris OVO Agent A.06.11
	PHSS_27067	Microsoft Windows OVO Agent A.06.11
	PHSS_27067	Windows XP Professional (32-bit) Agent
	PHSS_27298	Solaris 9 Agent

Table 1-3 Patches for OVO and Service Navigator (version A.06.00)^a

Operating System	Patch Number	Description
Solaris 7, 8 ^b	ITOSOL_00117	OVO Service Navigator A.06.09
	ITOSOL_00101	Consolidated OVO Server patch A.06.08
	ITOSOL_00108	Intermediate OVO Server patch A.06.09
	ITOSOL_00104	HP-UX 11.x Agent A.06.08
	ITOSOL_00106	Solaris Agent A.06.08
	ITOSOL_00113	NT Agent A.06.08
	ITOSOL_00152	Windows XP Professional (32-bit) Agent
	ITOSOL_00158	Solaris 9 Agent

a. English, Japanese

b. Most of these patches are OS patches, so you may have them already installed if you use the latest “recommended & security patches” for Solaris from the Sun Webpage.

Please ensure that the following minimum patches are installed.

Table 1-4 Patches for OVO and Service Navigator (version A.07.10)^a

Operating System	Patch Number	Description
HP-UX 11.x	PHSS_27387	HP-UX 11.0/11.11 OVO Msg/Act Agent A.07.12
	PHSS_28071	HP-UX 11.0/11.11 Coda Subagent A.07.10
	PHSS_27914	Consolidated OVO Java GUI A.07.x patch A.07.11
	PHSS_28501	Windows XP Professional (32-bit) Agent
Solaris 7, 8	ITOSOL_00192	Windows XP Professional (32-bit) Agent

a. English, Japanese

Software Prerequisites on the OVO Management Server

Please ensure that the following software is installed on the OVO management server system:

- HP OpenView Operations, version A.06.xx or A.07.xx. The console is installed and configured on the HP OpenView Operations management server system or other appropriate systems.
- *The HP OpenView Storage Data Protector Console is installed on the HP OpenView Operations management server system.*

The `swlist DATA-PROTECTOR` command returns:

```
DATA-PROTECTOR          A.05.05  HP OpenView Storage Data Protector
DATA-PROTECTOR.OMNI-CC  A.05.05  HP OpenView Storage Data Protector Cell Console
DATA-PROTECTOR.OMNI-CORE A.05.05  HP OpenView Storage Data Protector Core
```

Hardware Prerequisites on the OVO Management Server

Please ensure that the following hardware prerequisites are met on the OVO management server system:

- 5 MB disk space on the HP OpenView Operations management server system to install components necessary for the Data Protector Integration.

Managed Node Systems (Data Protector Cell Manager)

A number of agents and the Data Protector Integration are required for the complete management of Data Protector environments. The required components that must be installed on the managed node system hosting the Data Protector Cell Manager are:

- HP OpenView Operations Agent
- HP OpenView Performance Agent

NOTE The OVO and OVP patches must be installed on the OVO management server and must be distributed by the OVO administrator to the managed node systems prior to the distribution of the Data Protector Integration.

Supported OVO Agent Versions

The Data Protector Cell Manager installation must be made on a platform for which the OVO Agent is available. Please refer to Table 1-5 for details of the available agent versions and ensure that the appropriate version is installed:

Table 1-5 HP OpenView Operations Agent Availability

Operating System	OVO Agent Version	
	OVO 6.0	OVO 7.1
HP-UX 11.00	A.06.08 or higher	A.07.10
HP-UX 11.11		
Solaris 7, 8		
Microsoft Windows		

Supported HP OpenView Performance Agent Versions

If the OVP is to be installed, the Data Protector installation must be made on a platform for which the OVP is available. Please refer to Table 1-6 for details of the available agent versions.

Table 1-6 HP OpenView Performance Agent Availability

Operating System	OVP Version
HP-UX 11.00	C.03.70 or higher
HP-UX 11.11	
Solaris 7	C.03.75 or higher
Solaris 8	
Microsoft Windows	C.03.65 or higher

Additional Software for HP-UX Managed Nodes

The following software is not installed as part of the OVO management server installation nor as part of the Data Protector Integration installation. Please refer to each product section to check whether they are required or optional.

SNMP Emanate Agent (required)

The SNMP Emanate Agent is necessary to capture SNMP traps sent by the Data Protector Cell Manager on the same system and to let the OVO Agent forward any matching SNMP trap events as OpC messages to the OVO management server. This is called *Distributed Event Interception*, since the SNMP traps are intercepted on a managed node and not on the OVO management server.

The advantages, especially for large enterprise environments with a high number of Data Protector Cell Managers, are:

- The solution scales better: Additional Data Protector Cell Managers do not put additional load on the management server as the processing of SNMP traps is done on the managed node.
- Any automatic action configured as a response to an SNMP trap can be triggered and run locally on the managed node without involvement of the management server.
- Since no SNMP trap is sent from the managed node to the management server, the network load decreases.
- The probability that SNMP traps are lost is significantly reduced as these are not transmitted over the network.
- Security over (public) networks is increased, since SNMP traps do not use a network and are sent, received and processed only on the managed node. OpC messages are sent by the OVO agent to the OVO management server using DCE/RPCs, which allows authentication and encryption.

Please check that the SNMP Emanate Agent is installed on the Data Protector Cell Manager node using the command:

```
# swlist -l product -a description OVSNMPAgent
```

You should see the following entry:

```
OVSNMPAgent          "SNMP Agent functionality"
```

Additional Software for Windows Managed Nodes

The following software is not installed as part of the OVO management server installation nor as part of the Data Protector Integration installation. Please refer to each product section to check whether they are required or optional.

SNMP Service (required)

In order to send the Data Protector SNMP traps to the OVO management server you must install the SNMP service.

FTP Service (optional)

If you have the Data Protector Cell Manager installed on a number of Windows systems, you may consider installing the Windows FTP service. When you deploy the OVO Agent from the Unix OVO Management Server to a Windows system the most convenient way is to do it via the Windows FTP service.

For deployment of the OVO Agent to a Windows system alternative solutions exist. For details, please refer to the *HP OpenView Operations Installation Guide for the Management Server* and the HP OpenView Operations Administrator's Reference guides. However, using the Windows FTP service is the quickest and most convenient way.

Another advantage of using the Windows FTP service is if you want to conveniently distribute Data Protector configuration files from a central system to all Data Protector Cell Managers.

For the `obusergrp.pl` utility to work the FTP service is required, since it reads, modifies and writes the `ClassSpec` file. This file resides in Data Protector's configuration directory.

The FTP service is part of the Internet Service Manager Windows Component on Windows 2000. Configure the:

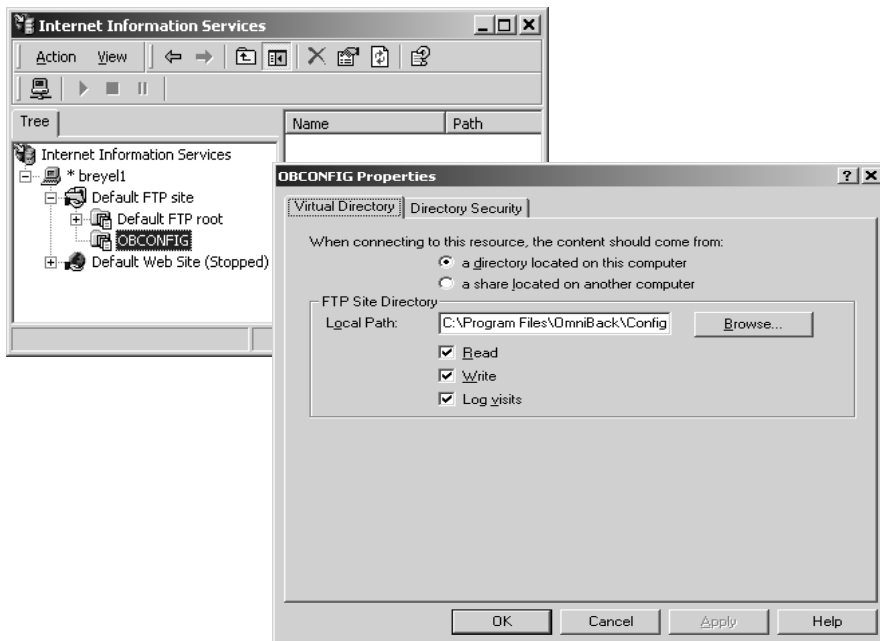
```
C:\Program Files\OmniBack\Config
```

directory (or equivalent directory, if you have chosen a custom path) as a Virtual Directory with the name:

OBCONFIG.

The `obusergrp.pl` tool needs precisely this name.

Figure 1-1 **Configuring the Windows FTP Service**



remsh Daemon (optional)

To run the Data Protector Start Service, Data Protector Stop Service and Data Protector Status applications, on a Windows managed node from the OVO Application Bank, a `remsh` daemon must be installed on the Windows system. You may use the daemon supplied with the Windows Resource Kit or another alternative, such as from the MKS Toolkit.

Disk-Space Requirements

Table 1-7 lists the disk space requirements for both the installation of the Data Protector Integration software and the Data Protector Integration's run-time files on the OVO management server and, in addition, on the managed node.

Table 1-7 Disk-Space Requirements

Machine	OVO Version	Operating System	Total
OVO Management Server	OVO 6.x and 7.x	HP-UX 11.x	5 Mb
		Solaris 7, 8	5 Mb
OVO Managed Node	OVO 6.x and 7.x	HP-UX 11.00, 11.11	1 Mb
		Solaris 7, 8	1 Mb
		Microsoft Windows	1.5 Mb

Memory (RAM) Requirements

There are no specific requirements concerning the amount of RAM installed on either the OVO management server or managed nodes, beyond the requirements of OVO and Data Protector.

Installing the HP OpenView Storage Data Protector Integration

The Data Protector Integration is delivered as a Software Distributor (SD) depot which is used to install the Data Protector Integration onto the OVO management server system through SD. This installs all components required for the management server and the managed nodes on the management server system. The agent software and the configuration data for these agents is then distributed by the OVO administrator to the managed nodes using OVO.

Installation

The Data Protector Integration software is split into SD filesets and include the following components:

- Monitoring and administration programs.
- OVO configuration data (including message groups, templates, and user profiles).
- Data Protector Integration applications.
- Data Protector Integration documentation.

To install the software on the management server, execute the following command on the management server:

```
# swinstall -s <depot_location> SPI-DATAPROTECTOR-OVO
```

The following filesets are installed on an OVO Management Server on HP-UX or Solaris:

SPI-DP-AGT-HP	OVO agent files for the DP Cell Manager on HP-UX
SPI-DP-AGT-NT	OVO agent files for the DP Cell Manager on NT 4.0, Win2000
SPI-DP-AGT-SOL	OVO agent files for the DP Cell Manager on Solaris
SPI-DP-CONF	OVO templates and configuration files for the OVO Mgmt. Server
SPI-DP-DOC	Data Protector Integration's documentation in Adobe Acrobat pdf format

The following fileset is installed on an OVO Management Server on HP-UX:

SPI-DP-SRV-HP	Data Protector Integration's executables and scripts for the OVO Management Server on HP-UX
---------------	---

The following fileset is installed on an OVO Management Server on Solaris:

SPI-DP-SRV-SOL	Data Protector Integration's executables and scripts for the OVO Management Server on Solaris
----------------	---

The following directories are created on the OVO management server system:

/opt/OV/OpC/integration/obsapi/bin	Binary and script files
/opt/OV/OpC/integration/obsapi/etc	XML template files for Service Navigation tree
/opt/OV/OpC/integration/obsapi/lib	Libraries and message catalogs
/opt/OV/OpC/integration/obsapi/vpp	Configuration files for Performance Agent
/opt/OV/OpC/integration/obsapi/doc	Documentation
/var/opt/OV/log/obsapi	Logfiles
/var/opt/OV/share/tmp/obsapi	Temporary and runtime files
/var/opt/OV/share/tmp/OpC_appl/obsapi	OVO files in uploadable format
/etc/opt/OV/share/obsapi/conf	XML files uploaded by Service Manager
/etc/opt/OV/share/bitmaps/C/omniback	Icons and bitmaps
/etc/opt/OV/share/registration/C/DPSPi	Application registration file

Installation Verification

Check the following logfiles for errors:

- /var/adm/swagent.log
- /var/opt/OV/log/OpC/mgmt_sv/obsapicfgupld.log

To check the Software Distributor installation, enter the following command:

```
# swlist -a revision -a state -a title -l fileset SPI-DATAPROTECTOR-OVO
```

You should get the following response.

```
# SPI-DATAPROTECTOR-OVO          SPI-DATAPROTECTOR-OVO
                                HP OpenView Storage Data Protector Integration into OVO
SPI-DATAPROTECTOR-OVO.SPI-DP-AGT-HP A.05.05 Configured  Data Protector Integration's files for the DP
                                Cell Manager on HP-UX 11.x
SPI-DATAPROTECTOR-OVO.SPI-DP-AGT-NT A.05.05 Configured  Data Protector Integration's files for the DP
                                Cell Manager on NT 4.0, Win2000
SPI-DATAPROTECTOR-OVO.SPI-DP-AGT-SOLA.05.05 Configured  Data Protector Integration's files for the DP
                                Cell Manager on Solaris 7 and 8
SPI-DATAPROTECTOR-OVO.SPI-DP-CONF  A.05.05 Configured  Data Protector Integration's templates for
                                the Mgmt. Server
SPI-DATAPROTECTOR-OVO.SPI-DP-DOC   A.05.05 Configured  Data Protector Integration's documentation
```

Compatibility Information and Installation Requirements

On HP-UX OVO Mgmt Srv:

SPI-DATAPROTECTOR-OVO.SPI-DP-SRV-HP	A.05.05	Configured	Data Protector Integration's executables and scripts for the Mgmt. Server
-------------------------------------	---------	------------	---

On Solaris OVO Mgmt Srv:

SPI-DATAPROTECTOR-OVO.SPI-DP-SRV-SOLA	A.05.05	Configured	Data Protector Integration's executables and scripts for the Mgmt. Server
---------------------------------------	---------	------------	---

Agent Installation

The agent software has to be distributed to the managed nodes in two main steps:

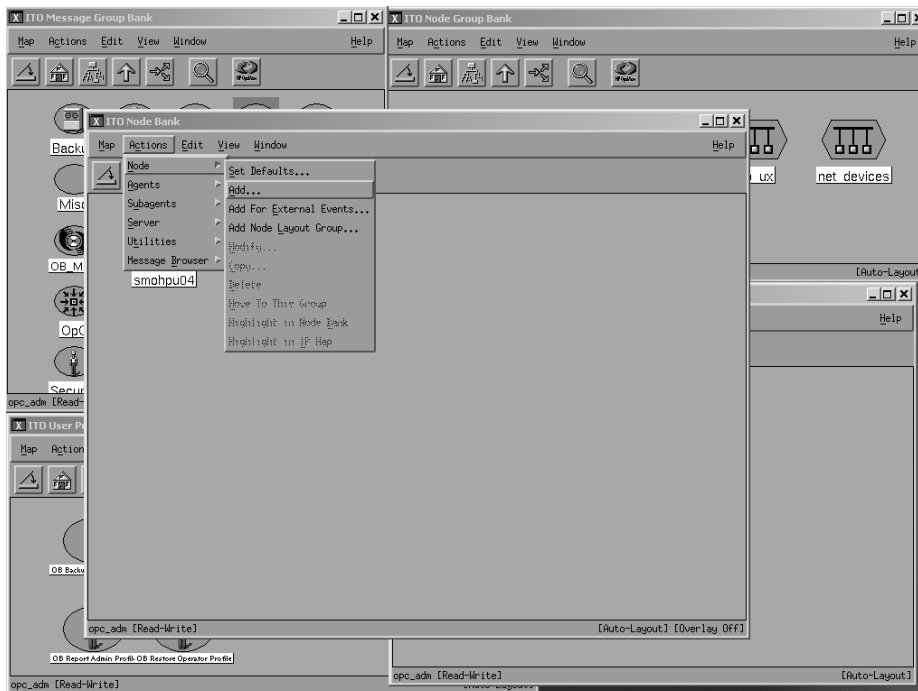
- Add the Data Protector Cell manager host system to the OVO managed environment as a managed node.
- Run the Add Data Protector Cell application for each Data Protector Cell manager node
- Distribute software, actions, commands, monitors and templates to the Data Protector Cell Manager managed node.

Adding the Data Protector Cell Manager System as an OVO Node

To add the Data Protector Cell manager host system to the OVO managed environment as a managed node:

1. Login to OVO as user `opc_admin`.
2. Open the Node Bank.

Figure 1-2 OVO Node Bank



3. Select **Actions** → **Node** → **Add...**

4. Add the label and hostname of the node that you are adding in the Add Node window.

You now have the Data Protector Cell manager system as a node in the Node Bank.

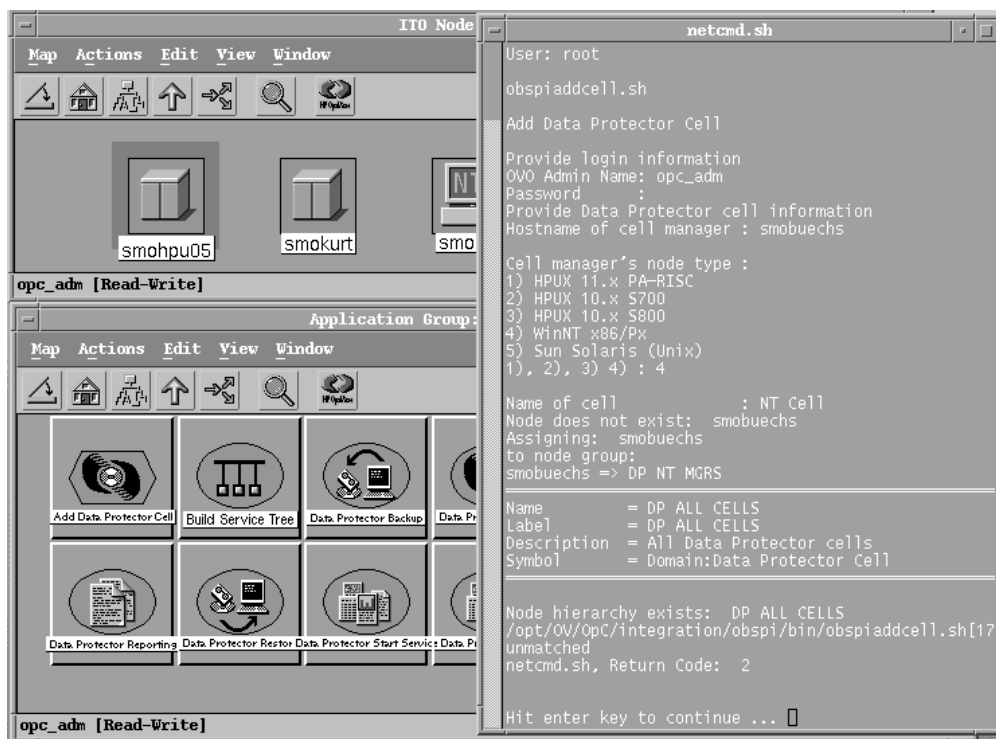
Running the Add Data Protector Cell Application

To run the Add Data Protector Cell application, as user `opc_admin`:

1. Open the Node Bank and the DPSPi_Applications window.
2. Select the **Data Protector Cell Manager** node from the Node Bank and drag and drop it onto the Add Data Protector Cell application.

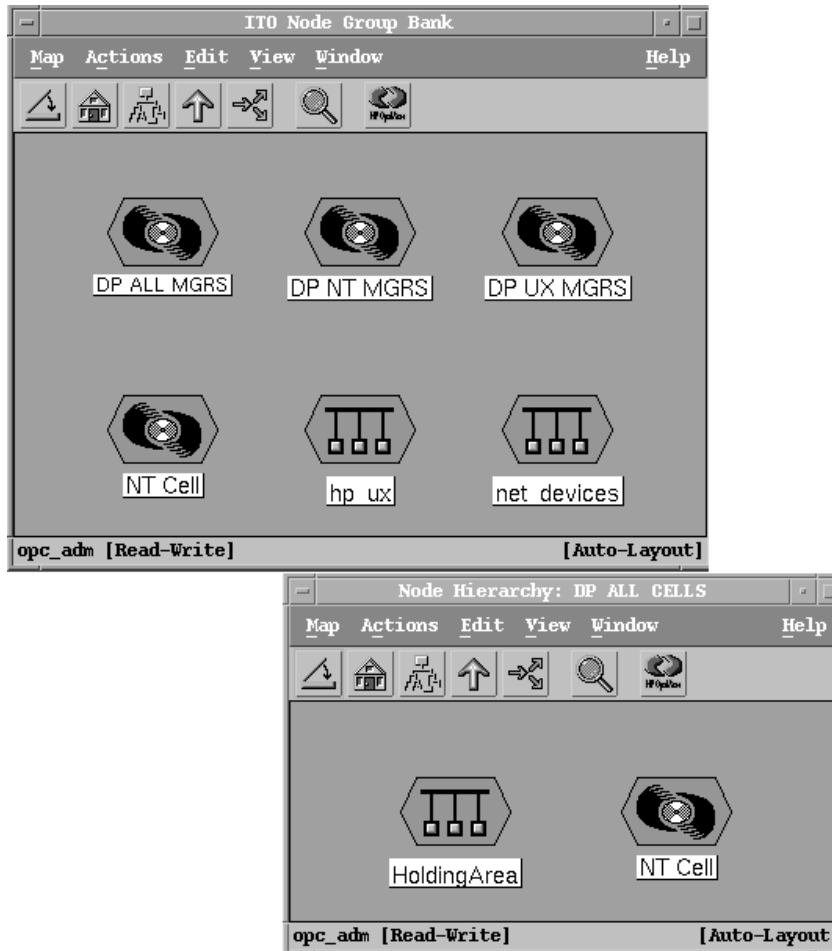
This opens a terminal window where you are asked to input some information:

Figure 1-3 Add Data Protector Cell Application



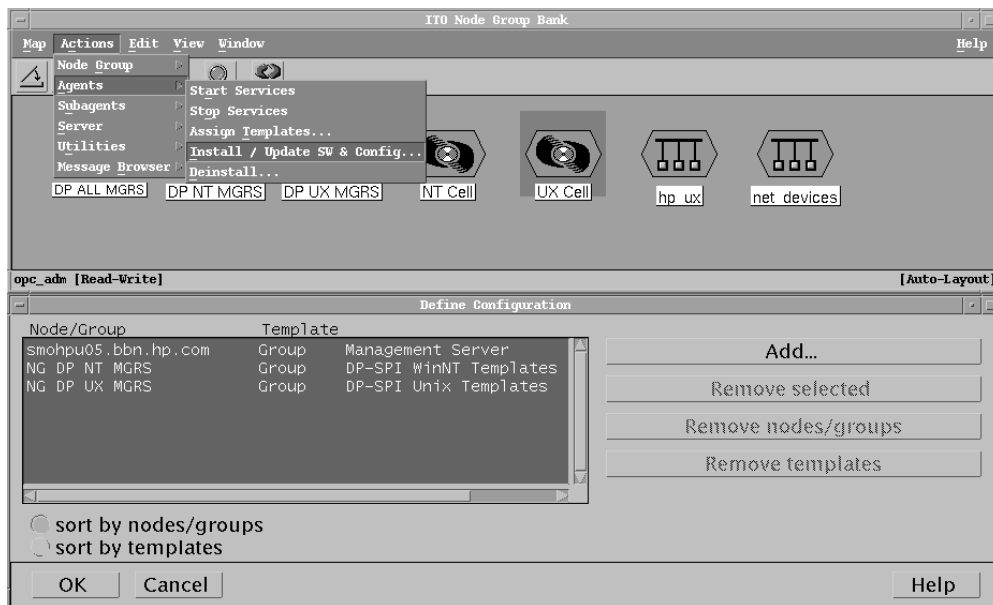
As a result, a new node group is added to the Node Group Bank and a new layout group is added to the DP ALL MGRS node hierarchy (NT CELL in the example below):

Figure 1-4 New Node Group and Layout Group for DP ALL MGRS



Distributing Software, Actions, Commands, Monitors and Templates to the Data Protector Cell Manager To distribute software, actions, commands, monitors and templates to the Data Protector Cell Manager managed node (the appropriate assignments have been made during installation):

Figure 1-5 **Distribute to Managed Node**



1. Login as user `opc_admin`.
2. Select the appropriate node group from the Node Group Bank. The node group `DP ALL MGRS` contains all Data Protector Cell Managers.
3. From the Node Group Bank, select:
Actions → **Agents** → **Install / Update SW & Config...**
4. Follow any instructions displayed in the terminal window.

Agent Configuration

SNMP Configuration on UNIX

To enable the OVO Agent on HP-UX nodes to receive SNMP traps from Data Protector:

1. Add one of the following lines to the `/opt/OV/bin/OpC/install/opcinfo` file.

- If an `ovtrapd` process is running add:

```
SNMP_SESSION_MODE    TRY_BOTH
```

- If no `ovtrapd` process is running add:

```
SNMP_SESSION_MODE    NO_TRAPD
```

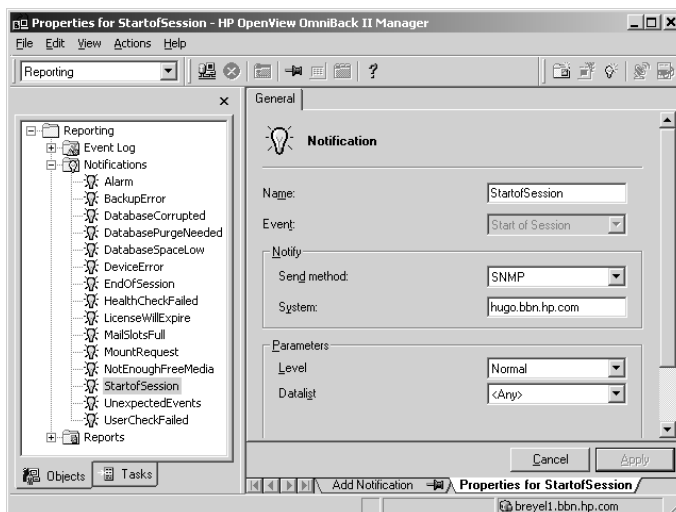
2. Configure the SNMP Emanate Agent to send SNMP traps to the local OVO agent by adding the following line to the `/etc/SnmpAgent.d/snmpd.conf` file:

```
trap-dest: 127.0.0.1
```

3. Configure Data Protector to send SNMP traps to the Data Protector Cell Manager host:

- a. Use the Data Protector GUI's **Reporting** context window to setup all Notification events to use:
 - SNMP as delivery method
 - Cell Manager host system as the destination

Figure 1-6 Data Protector GUI's Reporting context window



Compatibility Information and Installation Requirements

- b. Add the Cell Manager hostname as trap destination to the `OVdests` file in `/etc/opt/omni/snmp`.
- c. Disable filtering of SNMP traps by emptying the `OVfilter` file in `/etc/opt/omni/snmp`.

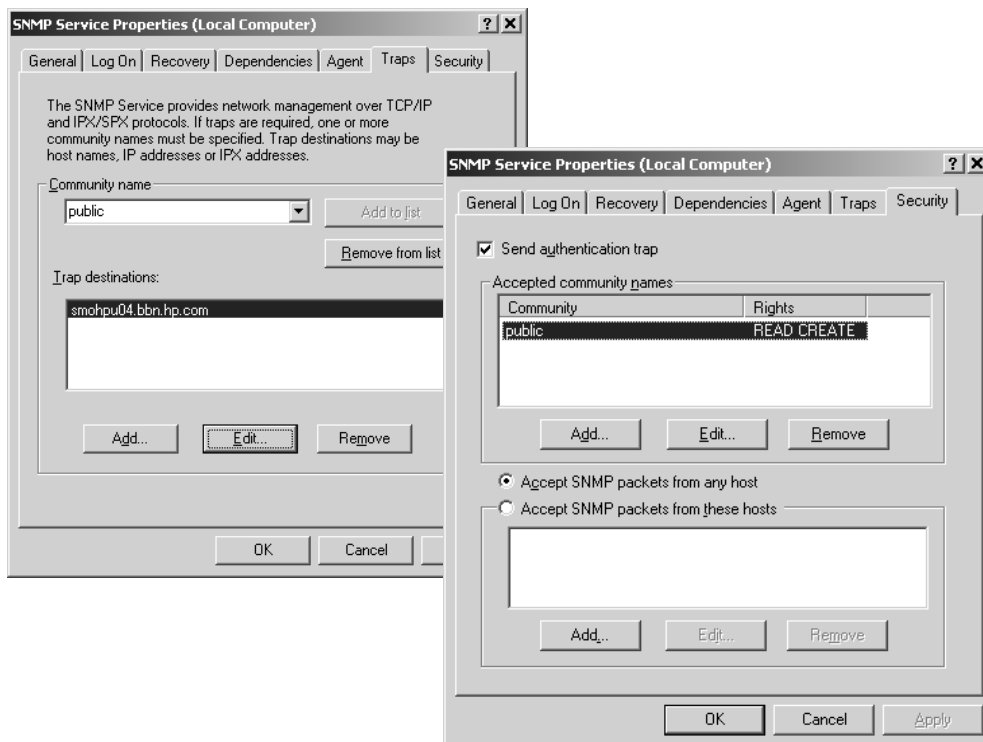
SNMP Configuration on Windows We recommend that you configure the Windows system to forward it's SNMP traps to the OVO Management Server in the following way:

1. Add the following line to the `\usr\opt\OV\bin\OpC\install\opcinfo` file.

```
SNMP_SESSION_MODE    NO_TRAPD
```

2. Configure the SNMP Service on an NT4.0 or Win2000 system to send traps to the OVO management server. The community name should be `public`, since this is the default community name that Data Protector's SNMP traps use. The trap destination must be the IP address or the hostname of the OVO Management Server and the rights of the community must be `READ CREATE`.

Figure 1-7 Configuring the SNMP Service on Windows

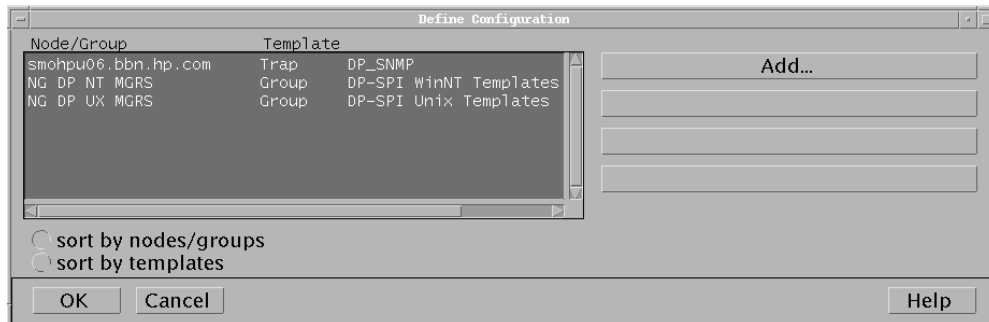


If you want to use a custom community name other than `public`, you must set this value in the Registry. This will let Data Protector use this custom community name for sending SNMP traps:

```
HKEY_LOCAL_MACHINE\SOFTWARE\HewlettPackard\OpenView\  
OmniBackII\SNMPTrap Community<REG_SZ> :  
<custom community name>
```

3. Configure Data Protector to send SNMP traps to the OVO management server system:
 - a. Use the Data Protector GUI's **Reporting** context window to setup all Notification events to use:
 - SNMP as delivery method
 - OVO management server system as the destination
 - b. Add the OVO management server hostname as trap destination to the `OVdests` file in `<Data Protector Root>/Config/SNMP`.
 - c. Disable filtering of SNMP traps by emptying the `OVfilter` file in `<Data Protector Root>/Config/SNMP`.
4. Configure the OVO management sever to intercept SNMP traps send by Windows Cell Manager. To do this use the OVO GUI to assign and distribute the "DP_SNMPP" template to the OVO management server.

Figure 1-8 SNMP template assignment to OVO management server



Data Protector User Configuration

- UNIX** For Data Protector on HP-UX nodes, check that the local root user is in the Data Protector's admin user group.
- Windows** For Data Protector on Windows, add the local HP ITO account user to Data Protector's admin user group.

Miscellaneous Configuration

- Windows** For Windows nodes, the system Variable:
DPHomeDIR
must be set with the Data Protector root path in order for the OVO Agent is able to find the Data Protector logfiles to be monitored.
The default location is: C:\Program Files\OmniBack

NOTE After changing a Windows system variable, the system must be restarted.

Program Identification

On UNIX Managed Nodes All Data Protector Integration programs and configuration files contain an identification string which can be displayed using the UNIX command:

`what(1):`

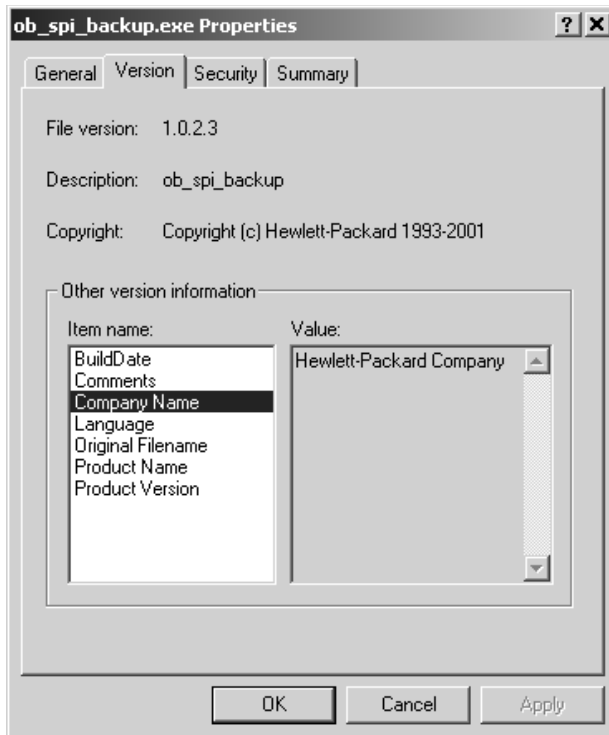
The output is of the form:

HP OpenView Storage Data Protector Integration into OVO A.05.05 (<build_date>)

On Windows Managed Nodes All Data Protector Integration programs and configuration files contain an identification string which can be displayed by:

1. Right-clicking the `ob_spi_backup.exe` file.
2. Select **Properties** from the popup menu.
3. Select the **Version** tab. The following screen is displayed.

Figure 1-9 **Version Information**



Patches and Fixes in This Version

Version A.05.05 of HP OpenView Storage Data Protector Integration includes the following fixes and enhancements:

Ref Number	Known Problem
-------------------	----------------------

NSMbb47512	Error in <code>DP_SNMP</code> trap template.
------------	--

Condition #19 in the `DP_SNMP` trap template has been changed to match and suppress any SNMP trap that is not a result of a notification event (SNMP traps sent by Disk Agent or Media Agent).

Software Availability in Native Languages

The HP OpenView Storage Data Protector Integration, version A.05.05 software is available in the English language only.