

**WinRunner®**  
*Installation Guide*  
Version 6.0



MERCURY INTERACTIVE

WinRunner Installation Guide, Version 6.0

© Copyright 1994 - 2000 by Mercury Interactive Corporation

All rights reserved. All text and figures included in this publication are the exclusive property of Mercury Interactive Corporation, and may not be copied, reproduced, or used in any way without the express permission in writing of Mercury Interactive. Information in this document is subject to change without notice and does not represent a commitment on the part of Mercury Interactive.

Mercury Interactive may have patents or pending patent applications covering subject matter in this document. The furnishing of this document does not give you any license to these patents except as expressly provided in any written license agreement from Mercury Interactive.

WinRunner, XRunner, LoadRunner, TestDirector, TestSuite, WebTest, and Astra are registered trademarks of Mercury Interactive Corporation in the United States and/or other countries. Astra SiteManager, Astra SiteTest, Astra QuickTest, Astra LoadTest, Topaz, RapidTest, QuickTest, Visual Testing, Action Tracker, Link Doctor, Change Viewer, Dynamic Scan, Fast Scan, and Visual Web Display are trademarks of Mercury Interactive Corporation in the United States and/or other countries.

This document also contains registered trademarks, trademarks and service marks that are owned by their respective companies or organizations. Mercury Interactive Corporation disclaims any responsibility for specifying which marks are owned by which companies or organizations.

If you have any comments or suggestions regarding this document, please send them via e-mail to [documentation@mercury.co.il](mailto:documentation@mercury.co.il).

Mercury Interactive Corporation  
1325 Borregas Avenue  
Sunnyvale, CA 94089 USA

---

# Table of Contents

<b>Before You Install</b> .....	1
Registering Your Copy of WinRunner .....	1
System Requirements .....	2
Upgrading from a Previous Version .....	2
Installing on Windows NT or Windows 2000 .....	3
<b>Installing WinRunner</b> .....	4
Running a Standalone or Network Installation .....	5
Running a Workstation Installation .....	16
Using a Local Network Drive for Updates .....	19
<b>Configuring Visual Basic 4.0 Support</b> .....	22
<b>Configuring Visual Basic 5.0 and 6.0 Support</b> .....	23
Preparing Your Visual Basic Application .....	23
<b>Enabling Table Contents Checks for an ActiveX Control</b> .....	25
<b>Adding WinRunner Components</b> .....	27
<b>Uninstalling WinRunner</b> .....	29



---

# Before You Install

Welcome to WinRunner, Mercury Interactive's enterprise functional testing tool for Windows 95, Windows 98, Windows NT 4.0, and Windows 2000. This guide describes everything you need to know to install WinRunner on a standalone computer or on a network. It describes the WinRunner package contents, system configuration, registration and backup procedures, and how to run the setup program.

Before you begin to install WinRunner, please review the following pre-installation procedures.

## Registering Your Copy of WinRunner

Register your copy of WinRunner to become a licensed user with all rights and privileges. Registered users can access technical support and information on all Mercury Interactive products, and are eligible for updates and upgrades.

---

**Note:** You can register your copy of WinRunner on Mercury Interactive's Customer Support site (<http://support.merc-int.com>).

---

You can also register your copy of WinRunner by filling out the Mercury Interactive Software Registration card.

- If you are in the United States, fill out the USA Owners portion of the card. Send the card to the Sunnyvale, California address printed on the card. No postage is necessary.
- If you are outside the United States, fill out the non-USA portion of the registration card and mail it to the appropriate international address using correct postage.

If your address changes, notify Mercury Interactive or your local representative, so that you can continue to receive product information and updates.

## System Requirements

In order to successfully run WinRunner, you need the following minimum system requirements:

<b>Platform</b>	An IBM-PC or compatible with a Pentium® /100MHz or higher microprocessor.
<b>Memory</b>	A minimum of 32 MB of RAM memory.
<b>Disk Space</b>	50 MB of free disk space for a compact installation or 120 MB for a typical or complete installation. You may need an additional 2 to 40 MB on the drive where Windows is installed, depending on the shared components already installed on the machine. (An additional 5 MB of free disk space is required during the installation process.)
<b>Operating System</b>	Windows 95, Windows 98, Windows NT 4.0, or Windows 2000.

## Upgrading from a Previous Version

You can install a standalone version of WinRunner over a previous version. Note that any changes made to the tests in the `\lib` directory or in any other files will be overwritten. However, the existing `\lib` directory will be backed up as `\lib.bak`. Note that if `lib.bak` already exists, the existing `\lib` directory will not be backed up. You should separately save any files you added or changed manually before installing WinRunner 6.0 over a previous WinRunner installation. Note that configuration changes made in the `wrun.ini` file will not be overwritten when installing WinRunner 6.0.

---

**Note:** There are documented backward compatibility problems with Microsoft ODBC 4, which is installed by WinRunner, Microsoft Office 2000, and other applications. When any of these programs is installed on a machine where TestDirector 5.0 is installed, TestDirector may behave unexpectedly.

When upgrading to WinRunner 6.0 or higher, make sure to upgrade to TestDirector 6.0 or higher, or install the software that installs ODBC 4 on another machine.

---

Note that you cannot install WinRunner over WinRunner 2000 or WinRunner EURO. You must uninstall WinRunner 2000 or WinRunner EURO before installing WinRunner. For more information, see “Uninstalling WinRunner” on page 29.

## Installing on Windows NT or Windows 2000

**If you are installing WinRunner on Windows NT or Windows 2000, make sure you have administrator permissions before you run the setup program.**

**Otherwise, you will receive a warning message and the setup program will close.**

# Installing WinRunner

You can install WinRunner on a local computer or on a network drive. The main steps for a WinRunner installation are as follows:

## **Standalone Installation**

- Install WinRunner using the Standalone option.
- If you plan to test a Visual Basic application, configure Visual Basic support.

## **Network Installation**

- Install WinRunner using the Network option.
- Run the workstation installation on each user workstation.
- If you plan to test a Visual Basic application, configure Visual Basic support.

---

**Note:** If you add WinRunner add-ins to a network installation after installing workstations from that network installation, you need to re-run the workstation setup to update each workstation with the list of available add-ins.

---

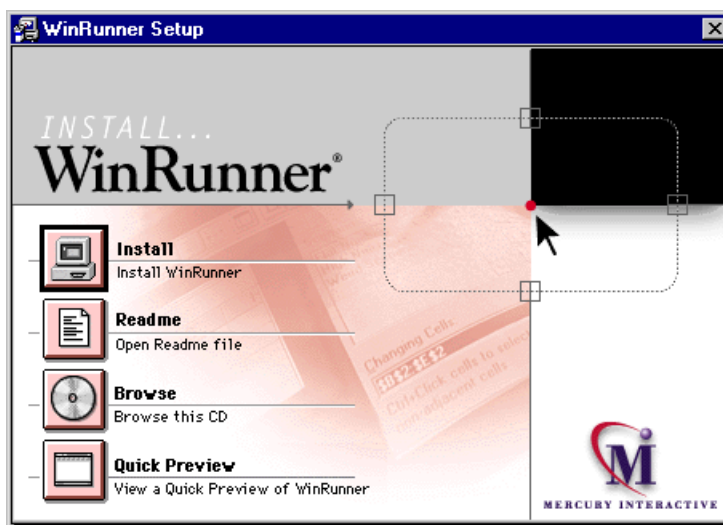


## Running a Standalone or Network Installation

You use the following procedure in order to install WinRunner on a standalone computer or on a network drive. If you are performing a network installation, follow the procedure below, and then run the workstation installation on each user workstation as described on page 16.

### To install WinRunner:

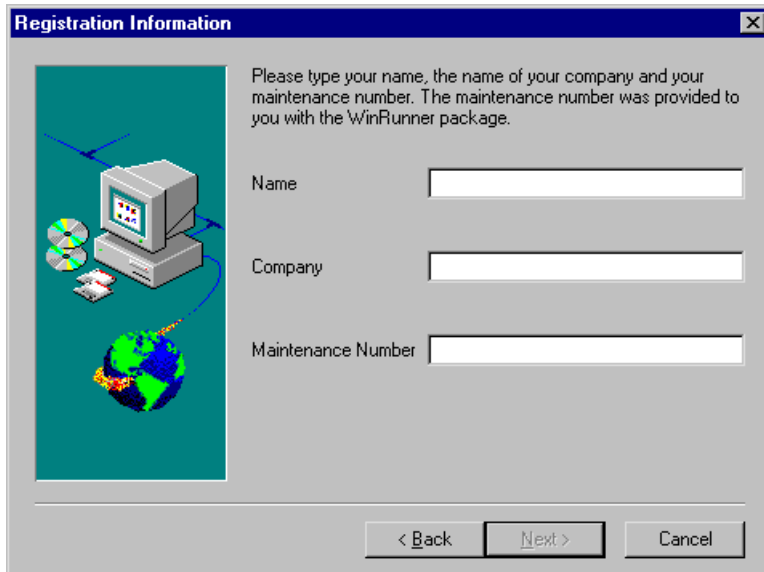
- 1 Insert the CD-ROM into the CD-ROM drive. If the CD-ROM drive is on your local machine, the WinRunner Setup window opens. If you are installing from a network drive, connect to it and run *autorun.exe* under the *\setup* subdirectory



If you want to view the Readme file, click **Readme**. If you want to browse the WinRunner Installation CD-ROM, click **Browse**. If you want to open an overview of WinRunner, click **Quick Preview**.

- 2 Click **Install**. The WinRunner Setup splash screen and the Setup progress bar open.
- 3 The software license agreement is displayed. To install WinRunner, you must accept the terms of the license agreement by clicking **Yes**. If you click **No**, the setup program will close.

- 4 In the **Registration Information** screen, type your name, the name of your company, and a WinRunner maintenance number. This number can be found in the Maintenance Pack Number envelope or on the bill of lading you received when you purchased WinRunner. Note that there is a single maintenance number for each team of users. (The maintenance number replaces what was formerly a serial number for each purchased copy of WinRunner. The maintenance number identifies the customer.)



Click **Next**.

- 5 Click **Yes** to confirm the registration information.

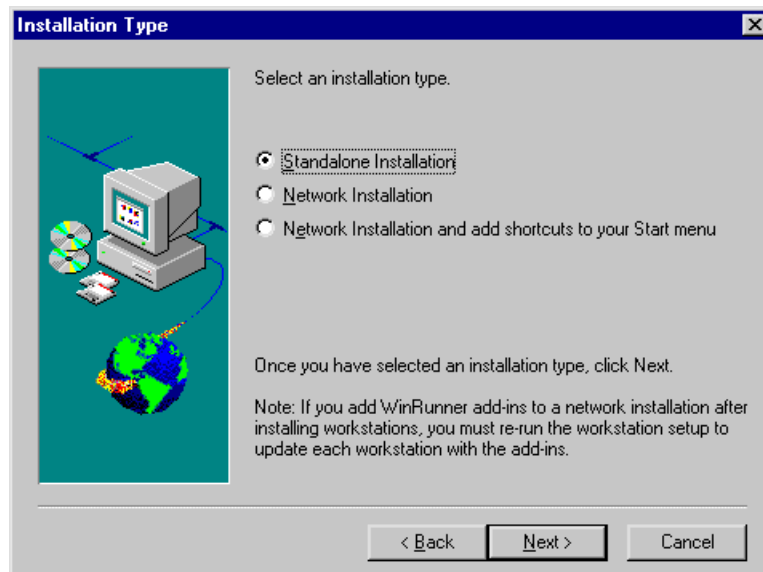
6 Do one of the following:

- To install on a hard disk of a local computer, click **Standalone Installation**.
- To install on a network drive, click **Network Installation**.
- To install on a network drive and configure your workstation to run WinRunner from the network, click **Network Installation and add shortcuts to your Start menu**.

---

**Note:** You cannot install a network installation over a previous version of WinRunner.

---

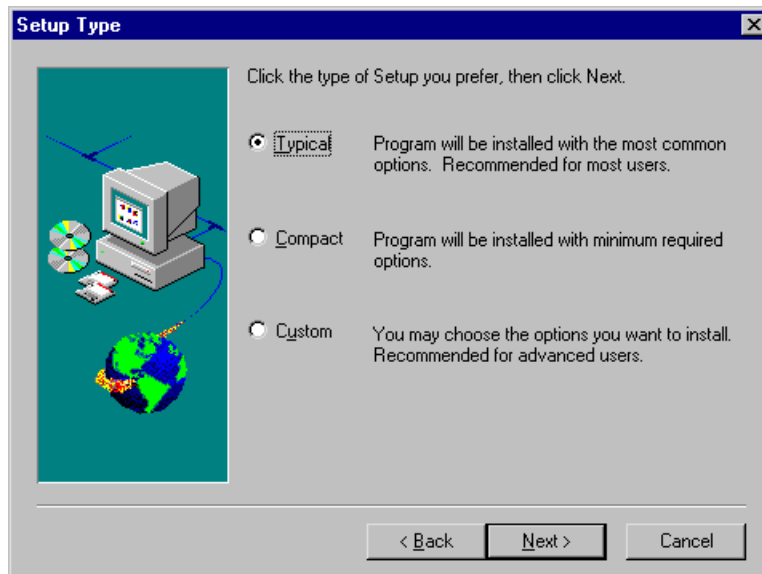


Click **Next**.

- 7** Setup prompts you to install DCOM if you are installing WinRunner on Windows 95, you do not have DCOM version 4,71,0,2618 installed, and you are performing one of the following:
- a standalone installation
  - a network installation which adds shortcuts to your Start menu
  - a workstation installation

Note that DCOM must be installed on your machine in order to install WinRunner.

If you click **Next** to install DCOM, the WinRunner setup program closes and the DCOM installation begins. Once you finish installing DCOM, you must reboot your computer and then restart the WinRunner setup program.

**8** Choose the type of installation: **Typical**, **Compact**, or **Custom**.

**Typical Installation** installs commonly used program files, including online documentation and samples, WebTest add-in support, and add-in support for PowerBuilder and Visual Basic applications and ActiveX controls. Note that you can choose which add-ins to load at the beginning of each WinRunner session. For additional information on loading add-in support, refer to Chapter 2, “WinRunner at a Glance,” in the *WinRunner User's Guide*.

**Compact Installation** installs only the required WinRunner program files, without online documentation, samples, WebTest add-in support, or add-in support for PowerBuilder and Visual Basic applications and ActiveX controls.

**Custom Installation** enables you to select which components to install.

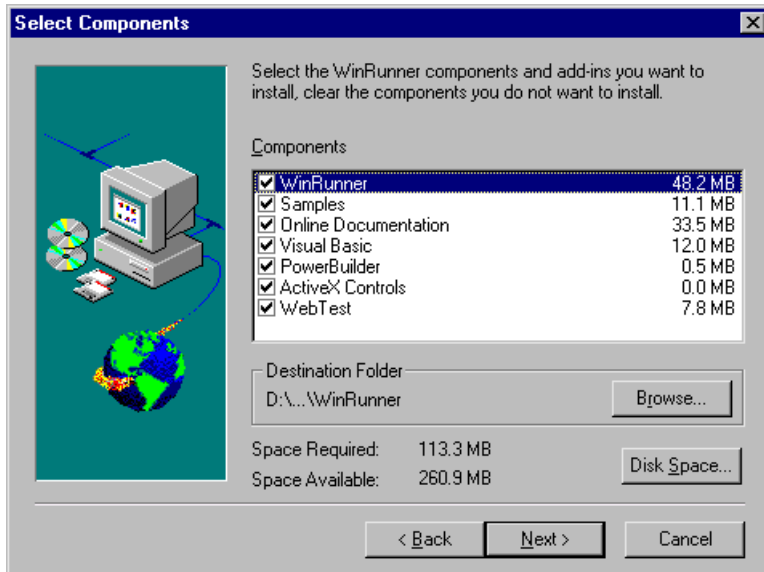
---

**Note:** When you install a standalone installation of WinRunner, Microsoft ODBC version 4.0 is installed on your machine.

---

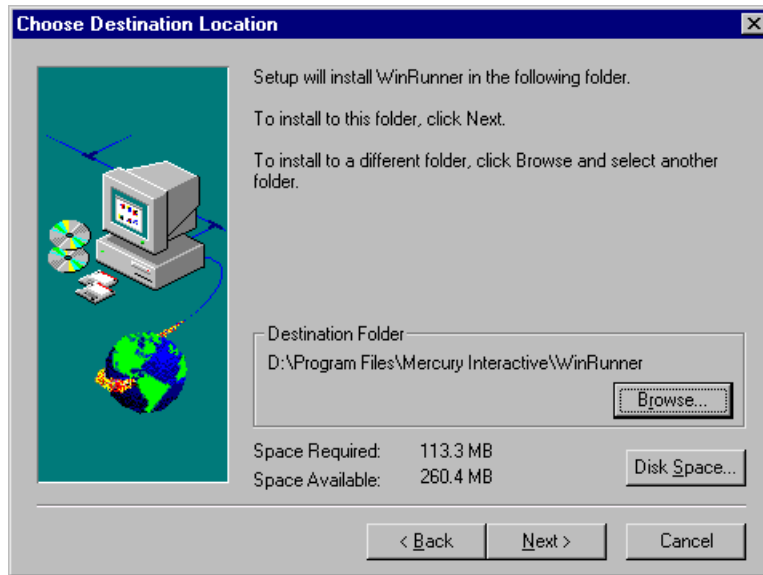
Click **Next**.

- 9 If you chose Custom Installation, the Select Components screen opens. Select the components you want to install. You can also specify the destination folder using the **Browse** button. To check the space available on a disk drive, click **Disk Space**.



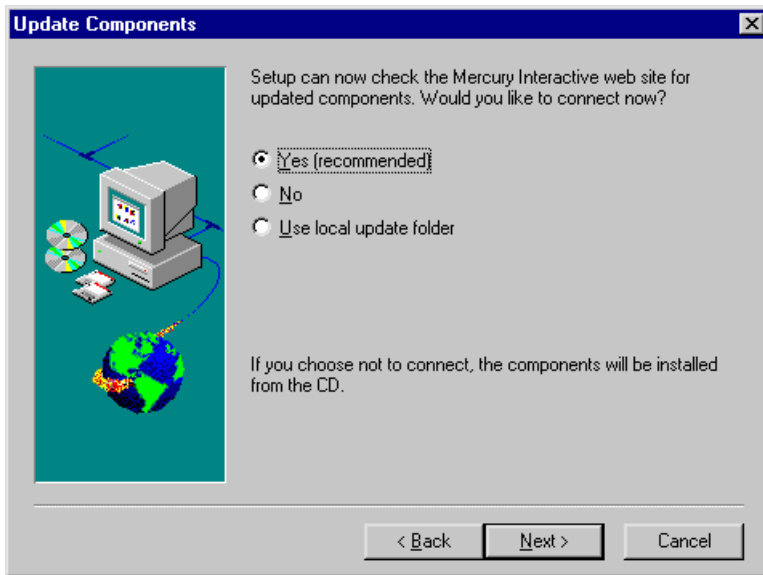
Click **Next**.

- 10** If you chose Typical or Compact Installation the Choose Destination Location screen opens. Specify the destination folder. To check the space available on a disk drive, click **Disk Space**.



Click **Next**.

- 11 If you have Microsoft Internet Explorer version 3.0 or higher installed (or any other software that installs *wininet*), you can check the Mercury Interactive Web site for updated components.



Click **Yes** to check the Mercury Interactive Web site for updated components. Click **No**, if you want to install the components from the CD-ROM without checking for updated components. Click **Use local update folder** only if you know that updated components have already been downloaded to a folder on your local network. See page 19 for more information on this option.

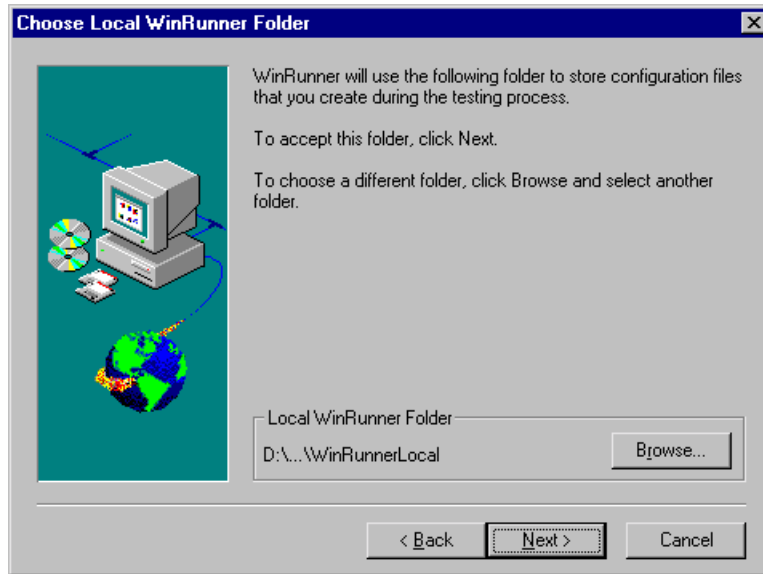
Click **Next**.

- 12 If you chose **Yes** in the previous screen, the installation checks the Mercury Interactive Web site for updated components. If there are components on the Web site that are newer than components on the CD-ROM, setup prompts you to overwrite the CD-ROM components with the Web site components. If no newer components are found on the Web site, then setup installs all components from the CD-ROM.

If the installation cannot access the Web site, you can click **Retry** to try to connect to the Web site again. If you click **Cancel**, setup installs the WinRunner components from the CD-ROM.

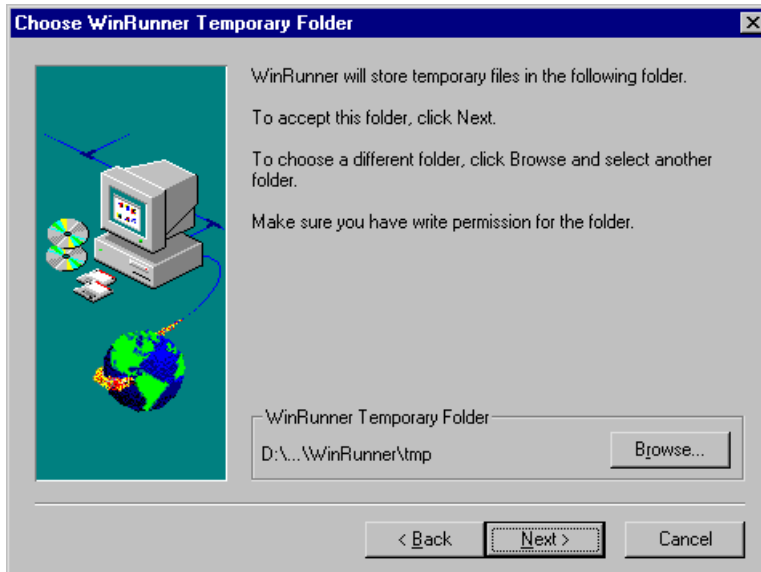


- 13** If you selected **Network Installation and add shortcuts to your Start menu** earlier in the setup, the Choose local WinRunner Folder screen opens. Select a location for the local WinRunner folder. This folder will allow you to configure WinRunner to meet your specific testing requirements, while running a shared version over the network.



Click **Next**.

- 14 Choose the location of your WinRunner temporary folder.

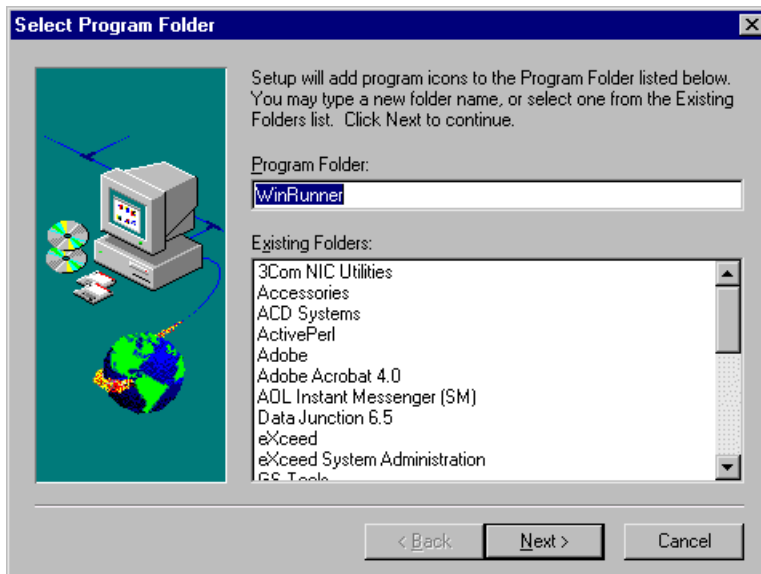


Click **Next**.

- 15 Review the settings you selected. To select different settings, click **Back**. To confirm the settings, click **Next**.

The installation process begins. To pause or quit the installation process, click **Cancel**.

- 16 Select the program folder for the WinRunner icons.




Click **Next** to proceed.

- 17 The installation settings you selected are displayed in a read-only window. Review the settings. If you want to select different settings, click **Back**. If you are satisfied with the settings, click **Next**.
- 18 The installation process begins. To pause or quit the installation process, click **Cancel**.
- 19 Read the information about accessing online documentation. If you installed add-in support for Visual Basic applications, additional information appears on your screen. Click **Next** to proceed.
- 20 Read the information about Mercury Interactive's Customer Support. Click **Next**.
- 21 The installation process is complete.
- 22 Restart your computer.

**Note:** If you try to start WinRunner before restarting your computer, WinRunner will not run properly.

**Note:** If you installed WinRunner on Windows NT or Windows 2000, then after restarting your computer, you must log in (for the first time) with the same login name that was used when installing WinRunner.

If you installed WinRunner on the network, run a workstation installation on all workstations. See the next section for details.

- To read any last-minute information, click **Start > Programs > WinRunner > Read Me**. The Readme file opens in Microsoft Wordpad.
- To view the WinRunner online books, you must have Acrobat Reader 4.0 installed. You can install it by clicking **Start > Programs > WinRunner > Documentation > Acrobat Reader Setup** and following the on-screen instructions. To view online books, click **Start > Programs > WinRunner > Documentation > WinRunner Books Online**.
-  ➤ To start WinRunner, click **Start > Programs > WinRunner > WinRunner**.

## Running a Workstation Installation

A workstation installation should be performed for each user running WinRunner from the network. This installation can be performed only after the network installation is successfully completed.

- 1** Click **Start > Run**.
- 2** Type `<network installation_directory>\setup\setup.exe` and click **OK**.

The WinRunner setup program starts. The WinRunner Setup splash screen and the Setup progress bar open.

- 3** The software license agreement appears. To install WinRunner, you must accept the terms of the license agreement by clicking **Yes**. If you click **No**, the setup program will close.

- 4** In the **Registration Information** dialog box, type your name and click **Next**.
- 5** Click **Yes** to confirm the registration information.
- 6** Confirm the Workstation Installation message and click **Next**.
- 7** Define the location for the local WinRunner folder.

The WinRunner folder on your hard drive is used to store configuration files you create during the testing process. Configuration files in this folder override configuration files of the same name on the network, so that you can configure WinRunner to your specific testing requirements.

Click **Next**.

- 8** Select the location of your WinRunner temporary folder.

Setup updates and installs system files.

Click **Next**.

- 9** Select the program folder for the WinRunner icons.


Click **Next**.

- 10** Restart your computer.

**Note: If you try to start WinRunner before restarting your computer, WinRunner will not run properly.**

**Note: If you installed WinRunner on Windows NT or Windows 2000, then after restarting your computer, you must log in (for the first time) with the same login name that was used when installing WinRunner.**

The WinRunner program folder is added to your Start menu.

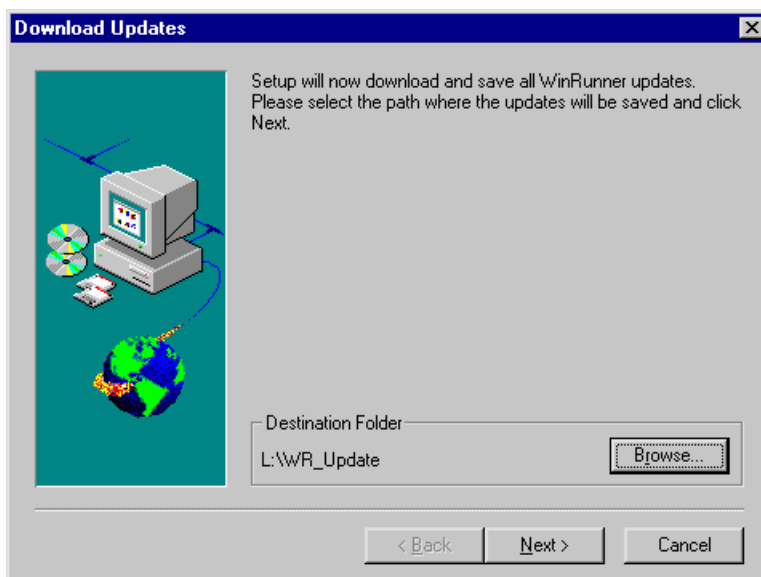
- To read what's new in WinRunner and any last-minute information, click **Start > Programs > WinRunner > Read Me**. The Readme file opens in Microsoft Wordpad.
- To view the WinRunner online books, you must have Acrobat Reader 4.0 installed. You can install it by clicking **Start > Programs > WinRunner > Documentation > Acrobat Reader Setup** and following the on-screen instructions. To view online books, click **Start > Programs > WinRunner > Documentation > WinRunner Books Online**.
-  ➤ To start WinRunner, click **Start > Programs > WinRunner > WinRunner**.

## Using a Local Network Drive for Updates

You can download WinRunner installation updates from the Mercury Interactive Web site to a network drive and then access the local network drive to update your WinRunner installations.

**To download updates to a local network drive:**

- 1 Insert the CD-ROM into the CD-ROM drive and run `<CD drive>\update.exe`.
- 2 The Download Updates screen opens.



Choose the local network drive for the WinRunner update files. Click **Next**.

- 3 Setup begins to download the files. When the download is complete, the Updates Download Complete screen opens. Click **Finish**.

---

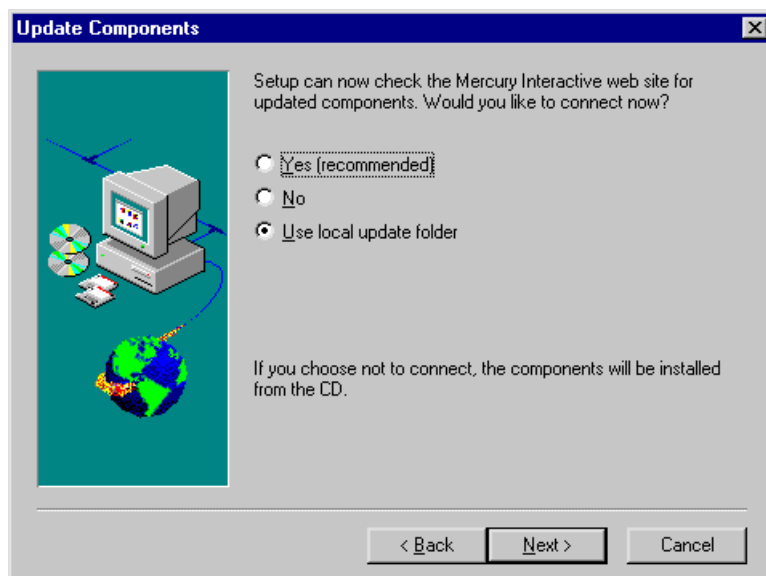
**Note:** When you run *update.exe*, the program downloads all posted updates, regardless of their contents and versions. When installing updates from a local path, however, the setup program downloads in the same way as it downloads from the Web site, installing only those components that are part of the current installation and newer than the components on the CD.

---

Once the updates have been downloaded to a local network drive, you can link to that drive from the WinRunner installation in order to download the updates locally.

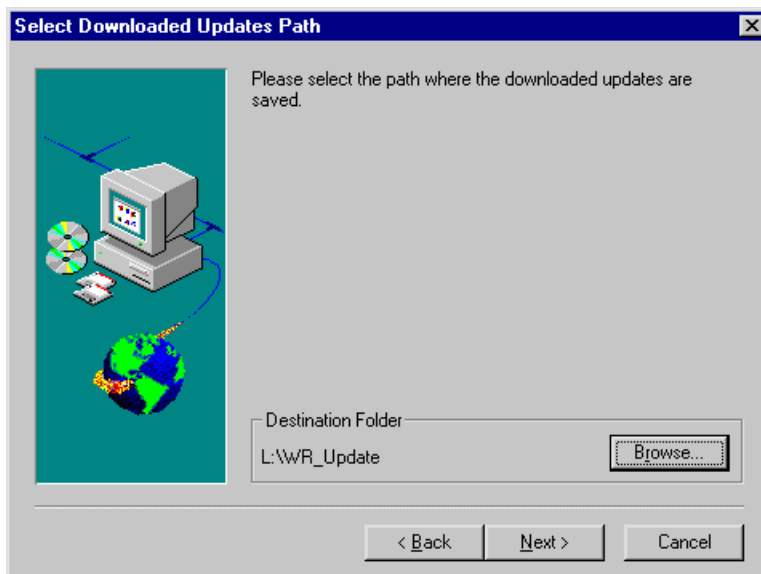
**To download updates from a local network drive:**

- 1 When the Update Components screen of the WinRunner installation opens, select **Use local update folder**.





- 2 The Select Downloaded Updates Path screen opens.



Use the **Browse** button to select the path where the updates are stored. Click **Next**. The installation program checks the specified network folder for updated components. If there are components in the update folder that are newer than components on the CD-ROM, setup prompts you to overwrite the CD-ROM components with the update folder components. When the check is complete, the installation program continues as described in step 13 on page 13.

## Configuring Visual Basic 4.0 Support

Before you can start using WinRunner's extended support for Visual Basic 4.0 in Windows 95, Windows 98, Windows NT, or Windows 2000 Visual Basic applications (32-bit), you need to compile the WinRunner OCX (wrvb40.ocx) in the application under test.

### To configure 32-bit Visual Basic 4.0 support:

- 1** Start Visual Basic 4.0 and open the project.
- 2** Select **Tools > Custom Controls**.
- 3** In the **Custom Controls** dialog box, select the **Wrvb40 OLE Custom Control Module** item. Click **OK**. The item is added to the toolbar.
- 4** Drag the new item onto the main application form.
- 5** Right-click this object and select **View Code**.
- 6** Select **Object > Form**.
- 7** Insert the following line into the beginning of the Form\_Load function:

```
Wrvb1.Init Forms
```

For example:

```
Private Sub Form Load ()  
...  
Wrvb1.Init Forms  
...  
End Sub
```

- 8** Run or recompile your application and run the *.exe* file.

---

# Configuring Visual Basic 5.0 and 6.0 Support

WinRunner's add-in support for Visual Basic 5.0 and 6.0 applications includes all the support provided for Visual Basic 4.0 applications, plus:

- all standard Visual Basic 5.0 and 6.0 controls
- Visual Basic projects that create ActiveX controls

## Preparing Your Visual Basic Application

Before you can start testing a Visual Basic application using WinRunner's add-in support for Visual Basic 5.0 and 6.0, the application developer must add the WinRunner agent to the application. To do so, the developer runs the `setup.exe` program from the `\vbdev` directory on the WinRunner installation CD-ROM.

Note that if the application currently references the WinRunner OCX, you must first remove all references from forms, as well as the associated code (Wrb1.Init Forms).

The WinRunner agent installation installs an AddIn to your Visual Basic IDE. The name of this AddIn is `WinRunnerAddIn.Connect`. It adds lines of code to your Visual Basic source code.

`WinRunnerAddIn.Connect`

- adds a reference to the `wrvbasr.dll` component
- adds a new code Module to the Visual Basic project called "WinRunnerSupport"
- adds a line to the WinRunnerSupport Module:

```
Global asr As New WRVBASRLib.VbMod
```

- adds code to the StartUp object:

If the Startup Object is a Form, the AddIn adds the following line of code to the Form\_Load event: `asr.Init Forms`

If the Startup Object is Sub Main, the AddIn adds the following line of code to the Main() method: `asr.Init Forms`

- For all Class modules in the project, the AddIn adds the following line of code to the Class\_Initialize event: `asr.Init Forms`
- For all UserControl modules in the project, the AddIn adds the following line of code to the UserControl\_Initialize event: `asr.Init Forms, UserControl`
- For all UserDocument modules in the project, the AddIn adds the following line of code to the UserControl\_Initialize event: `asr.Init Forms, UserDocument`

---

**Notes:** If the error message “DllRegisterServer in <windows directory>\system\wrvbasr.dll failed” appears during the WinRunner agent installation, copy the file oleaut32.dll (version 2.20.4054.1 or higher) to your system directory and re-install the WinRunner agent.

Do not run WinRunner and the Visual Basic IDE together.

Test your application only as a running executable.

---

---

# Enabling Table Contents Checks for an ActiveX Control

To enable support for contents verification on any ActiveX control that can be viewed as a table object, you must implement a capture function for the ActiveX control in Visual Basic and then execute a TSL function.

WinRunner includes Visual Basic project files (*wrvbsrv4.vbp* for Visual Basic 4.0 and *wrvbsrv5.vbp* for Visual Basic 5.0 and 6.0) that compile into an OLE Automation Server. WinRunner uses this server to capture table contents.

Follow these steps to enable contents verification on an ActiveX control that can be viewed as a table object:

- 1 Start Visual Basic 4.0/5.0/6.0.
- 2 In Visual Basic, open the appropriate wrvbsrv project file (*wrvbsrv4.vbp* or *wrvbsrv5.vbp*) located in the WinRunner installation folder under *custom\wrvbsrv*.
- 3 Open *capture.cls* and add a Sub with the following prototype:

```
Public Sub<CaptureFunctionName>(ByVal <tab_ctrl> As Object, ByVal  
<file_name> As String)
```

The function should dump the table contents of the ActiveX control into <file\_name> in the following format:

cells separated by Tab(Chr(9)), rows separated by Newline.

---

**Note:** Cell data should not contain escape characters such as Tabs or Newlines. Cells in the first row (Column Titles) should not contain either escape characters or space characters. See the MSGridCapture Sub for an example.

---

**4** Compile the project into a .dll.

For Visual Basic 4.0, from the File menu select **Make OLE DLL file**.

For Visual Basic 5.0 or 6.0, from the File menu select **Make WRVBSRV DLL file**.

**5** In WinRunner, execute the **add\_table\_capture\_function** statement. Set the second argument to the name of the Sub you implemented in the Visual Basic function. For example:

```
add_table_capture_function ("MSGrid.Grid", "MSGridCaptureFunc");
```

---

# Adding WinRunner Components

Once you install WinRunner, you can run the setup program at any time to add program components, such as an additional development environment or control support, samples, or online documentation.

## To add components:

- 1** Insert the CD-ROM into the drive from which you want to add WinRunner components. If the CD drive is on your local machine, the WinRunner Setup window opens. If you are installing from a network drive, connect to it and run *autorun.exe* under the *\setup* subdirectory.
- 2** Click **Install**. The WinRunner setup program starts. The WinRunner Setup splash screen and the Setup progress bar open.
- 3** The software license agreement appears. To accept the terms of the license agreement, click **Yes**. If you click **No**, the setup program will close. To install additional WinRunner components, you must accept the license agreement.
- 4** In the **User Information** dialog box, type your name, the name of your company, and a WinRunner maintenance number. You can find this number on the outside of your WinRunner box. Click **Next** to proceed.
- 5** Click **Yes** to confirm the registration information.
- 6** Select your installation type: **Standalone Installation**, **Network Installation**, or **Network Installation and add shortcuts to your Start menu**. Click **Next** to proceed.
- 7** Choose **Custom Installation**. Click **Next** to proceed.
- 8** Select the components you want to install and specify the destination folder. Click **Next** to proceed.
- 9** Select **Yes**, **No**, or **Use local update folder** to set your update components preferences. Click **Next** to proceed.

- 10** If you select a component that is already installed, you are prompted to overwrite it. To overwrite existing components of WinRunner, click the **Overwrite** button. If you do not want to overwrite existing components of WinRunner, click **Cancel**. The previous window reopens and you can modify your selection.
- 11** If you chose **Network Installation and add shortcuts to your Start menu** in step 6, select a location for the local WinRunner folder. Click **Next** to proceed.
- 12** Select a location for temporary WinRunner files. Click **Next** to proceed.
- 13** Select a program folder for WinRunner icons. Click **Next** to proceed.
- 14** The installation settings you selected are displayed in a read-only window. Review the settings. If you want to select different settings, click **Back**. If you are satisfied with the settings, click **Next**.

The installation process begins.

To pause or quit the installation process, click **Cancel**.



---

# Uninstalling WinRunner

Your WinRunner installation includes an uninstall program that uninstalls WinRunner software and files from your computer and removes WinRunner shortcuts from your Start menu.

## To uninstall WinRunner:

- 1** Click **Programs > WinRunner > Uninstall WinRunner** on your **Start** menu.  
The Uninstall Shield window opens.
- 2** You may be prompted to remove shared files that are not in use by any program. If you are not sure what to do, click **No to All**.  
UninstallShield removes WinRunner from your computer.
- 3** When the Uninstall program is completed, the OK button is enabled. Click **OK**.
- 4** You must reboot your machine to complete the uninstall process or before reinstalling WinRunner.







MERCURY INTERACTIVE

**Mercury Interactive Corporation**

1325 Borregas Avenue  
Sunnyvale, CA 94089 USA

**Main Telephone:** (408) 822-5200

**Sales & Information:** (800) TEST-911

**Customer Support:** (877) TEST-HLP

**Fax:** (408) 822-5300

**Home Page:** [www.merc-int.com](http://www.merc-int.com)

**Customer Support:** [support.merc-int.com](http://support.merc-int.com)



\* WR1 G6. 02 USA / 01 \*