

WinRunner®
Siebel Add-in Installation Guide
Version 6.0



MERCURY INTERACTIVE

WinRunner Siebel Add-in Installation Guide, Version 6.0

© Copyright 1999 by Mercury Interactive Corporation

All rights reserved. All text and figures included in this publication are the exclusive property of Mercury Interactive Corporation, and may not be copied, reproduced, or used in any way without the express permission in writing of Mercury Interactive. Information in this document is subject to change without notice and does not represent a commitment on the part of Mercury Interactive.

Mercury Interactive may have patents or pending patent applications covering subject matter in this document. The furnishing of this document does not give you any license to these patents except as expressly provided in any written license agreement from Mercury Interactive.

WinRunner, XRunner, LoadRunner, TestDirector, TestSuite, and WebTest are registered trademarks of Mercury Interactive Corporation in the United States and/or other countries. Astra, Astra SiteManager, Astra SiteTest, RapidTest, QuickTest, Visual Testing, Action Tracker, Link Doctor, Change Viewer, Dynamic Scan, Fast Scan, and Visual Web Display are trademarks of Mercury Interactive Corporation in the United States and/or other countries.

This document also contains registered trademarks, trademarks and service marks that are owned by their respective companies or organizations. Mercury Interactive Corporation disclaims any responsibility for specifying which marks are owned by which companies or organizations.

If you have any comments or suggestions regarding this document, please send them via e-mail to documentation@mercury.co.il.

Mercury Interactive Corporation
1325 Borregas Avenue
Sunnyvale, CA 94089 USA

Table of Contents

Before You Install	1
Checking Your Package	1
System Requirements	2
Installing Siebel Add-in Support	3
Installing the WinRunner Siebel Add-in.....	3
Configuring the OLE Automation Setting	6
Disabling Siebel Add-in Support	8

Before You Install

Welcome to the Siebel Add-in for WinRunner 6.0. The Siebel Add-in enables you to record and run tests on standard Siebel objects in your Siebel GUI client application and to map Siebel objects to standard WinRunner object classes. With the Siebel Add-in you can retrieve and set object properties and add GUI checkpoints to your script to check Siebel object properties as well as standard WinRunner properties.

This guide describes how to install Add-in support for Siebel objects and how to configure your Siebel application to work with WinRunner.

Note: The Siebel Add-in supports the Siebel GUI client only.

Before you begin to install the Siebel Add-in, please review the following pre-installation procedures.

Checking Your Package

In addition to this installation guide, please make sure your package contains the items below. If any item is missing or damaged, contact Mercury Interactive or your local distributor.

Program Disks

Your package contains:

- 1 CD-ROM

System Requirements

To successfully run WinRunner with the Siebel Add-ins, you need the following minimum system requirements:

Platform	An IBM-PC or compatible with a Pentium® /100MHz or higher microprocessor.
Memory	32 MB of RAM memory.
Operating System	Windows 95, Windows 98, or Windows NT 4.0.
Prerequisites	WinRunner 6.0 standalone installation.

Installing Siebel Add-in Support

The installation process for Siebel Add-in support is comprised of two stages:

- ▶ First, you install the WinRunner Siebel Add-in.
- ▶ Then you configure the OLE automation setting.

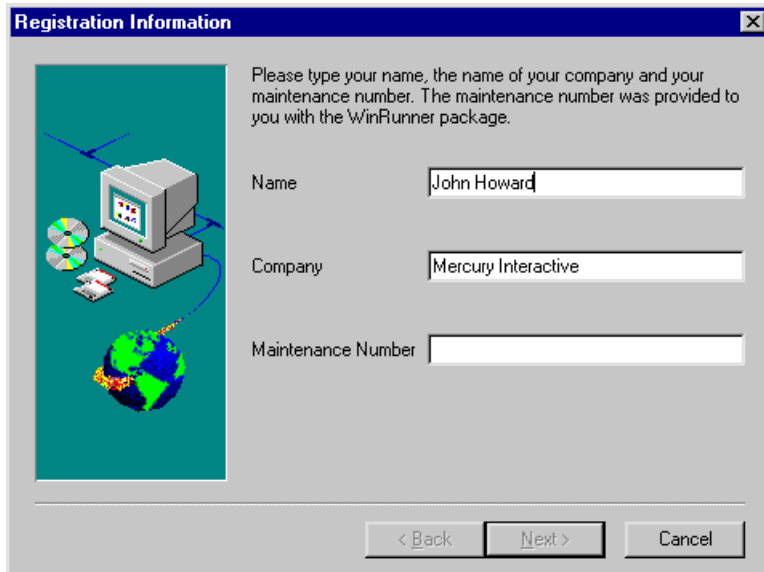
Installing the WinRunner Siebel Add-in

The Siebel Add-in setup program installs the Siebel Add-in in your WinRunner installation folder.

To install Siebel Add-in support:

- 1 Insert the CD-ROM into the drive from which you want to install. If you are installing from a network drive, connect to it.
- 2 Select **Run** on the Start menu.
- 3 Type the location from which you are installing, and `setup.exe`. For example, type `d:\setup.exe`.
- 4 In the **Registration Information** screen, type your name, the name of your company, and a WinRunner maintenance number. This number can be found in the Maintenance Pack Number envelope or on the bill of lading you received when you purchased WinRunner. Note that there is a single maintenance number for each team of users. (The maintenance number

replaces what was formerly a serial number for each purchased copy of WinRunner. The maintenance number identifies the customer.

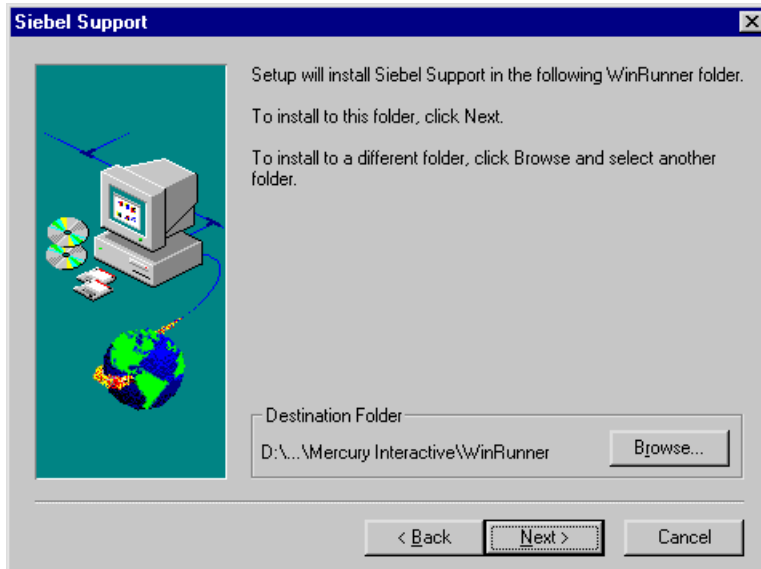


The image shows a Windows-style dialog box titled "Registration Information". On the left side, there is a graphic with a teal background featuring a computer monitor, a tower PC, two CD-ROMs, and a globe with a network of lines. On the right side, there is instructional text: "Please type your name, the name of your company and your maintenance number. The maintenance number was provided to you with the WinRunner package." Below this text are three text input fields. The first field is labeled "Name" and contains the text "John Howard". The second field is labeled "Company" and contains the text "Mercury Interactive". The third field is labeled "Maintenance Number" and is currently empty. At the bottom of the dialog box, there are three buttons: "< Back", "Next >", and "Cancel".

Click Next.

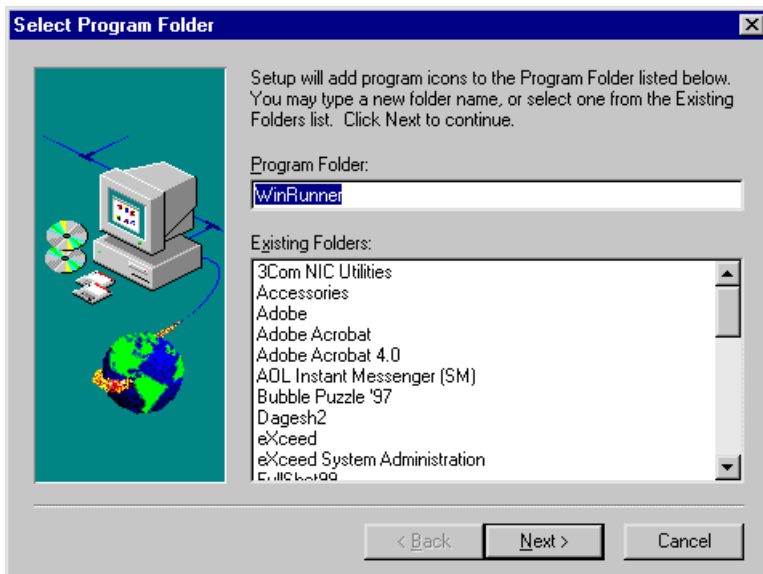
- 5 Click Yes to confirm the registration information.
- 6 Specify the folder in which to install the Siebel Add-in. The destination folder must be the WinRunner installation folder. If the installation folder

that appears is not the WinRunner installation folder, click **Browse** to find the correct destination folder.



Click **Next**. The installation process begins. To pause or quit the installation, click **Cancel**.

7 Select the program folder for the Siebel Add-in icons.



Click Next.

8 The Siebel Add-in Installation is complete. Click Finish. It is recommended to restart your computer.

To read what's new in the Add-in support for Siebel, and any last minute information, select the Yes, I want to view the Read Me File check box.

Configuring the OLE Automation Setting

Before you can test Siebel applications with WinRunner, you must ensure that OLE automation in the Siebel configuration file is set to TRUE:

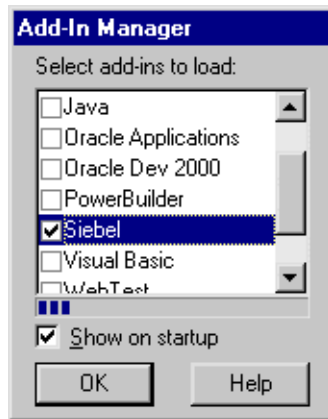
To configure the OLE automation setting:

- 1 Use Notepad to open the *siebel.cfg* file . This file is located in the *<Siebel GUI Client folder>\bin* folder.
- 2 Verify that the EnableOLE Automation line appears as follows:
EnableOLEAutomation = "TRUE".

You are now ready to create and run tests on Siebel applications.



To start WinRunner with support for Siebel applications, select **Programs > WinRunner > WinRunner** from the Start menu. The Add-in Manager dialog box opens. Select **Siebel** and click **OK**.



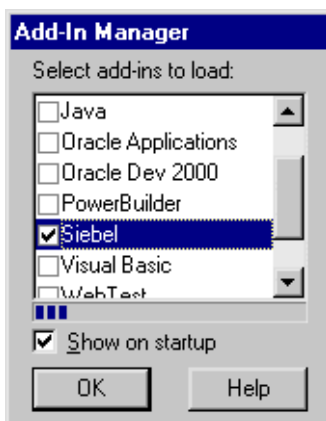
For more information about the Add-in Manager, please refer to the *WinRunner User's Guide*.

Disabling Siebel Add-in Support

If you decide not to use Siebel support, you can disable the Siebel add-in.

To disable the add-in support:

- 1 Select Programs > WinRunner > WinRunner from the Start menu to open WinRunner.
- 2 After the opening screen appears, the Add-In Manager dialog box opens for ten seconds. (If the Add-In Manager dialog box does not open, see the note below.)



To disable Siebel support, clear the Siebel check box.

- 3 Click OK. WinRunner opens with the Siebel add-in support disabled.

Note:

If the Add-In Manager dialog box does not open:

- 1 Start WinRunner.
 - 2 In **Settings > Options > Environment** tab, check **Show Add-in Manager dialog for ___ seconds** and fill in a comfortable amount of time in seconds. (The default value is 10 seconds.)
 - 3 Click **OK**.
 - 4 Close WinRunner. A WinRunner Message dialog prompts you to save changes made in the configuration. Click **Yes**.
 - 5 Open WinRunner again and proceed from Step 2 in “To disable the add-in support,” above.
-



MERCURY INTERACTIVE

Mercury Interactive Corporation

1325 Borregas Avenue
Sunnyvale, CA 94089 USA

Main Telephone: (408) 822-5200

Sales & Information: (800) TEST-911

Customer Support: (877) TEST-HLP

Fax: (408) 822-5300

Home Page: www.merc-int.com

Customer Support: web.merc-int.com



* WRSBLI 66. 0 / 01 *