

WinRunner®
Delphi Add-in Installation Guide
Version 6.0



MERCURY INTERACTIVE

WinRunner Delphi Add-in Installation Guide, Version 6.0

© Copyright 1999 by Mercury Interactive Corporation

All rights reserved. All text and figures included in this publication are the exclusive property of Mercury Interactive Corporation, and may not be copied, reproduced, or used in any way without the express permission in writing of Mercury Interactive. Information in this document is subject to change without notice and does not represent a commitment on the part of Mercury Interactive.

Mercury Interactive may have patents or pending patent applications covering subject matter in this document. The furnishing of this document does not give you any license to these patents except as expressly provided in any written license agreement from Mercury Interactive.

WinRunner, XRunner, LoadRunner, TestDirector, TestSuite, and WebTest are registered trademarks of Mercury Interactive Corporation in the United States and/or other countries. Astra, Astra SiteManager, Astra SiteTest, RapidTest, QuickTest, Visual Testing, Action Tracker, Link Doctor, Change Viewer, Dynamic Scan, Fast Scan, and Visual Web Display are trademarks of Mercury Interactive Corporation in the United States and/or other countries.

This document also contains registered trademarks, trademarks and service marks that are owned by their respective companies or organizations. Mercury Interactive Corporation disclaims any responsibility for specifying which marks are owned by which companies or organizations.

If you have any comments or suggestions regarding this document, please send them via e-mail to documentation@mercury.co.il.

Mercury Interactive Corporation
1325 Borregas Avenue
Sunnyvale, CA 94089 USA

Table of Contents

Before You Install	1
Checking Your Package	1
System Requirements	2
Installing Delphi Add-in Support	3
Installing the WinRunner Delphi Add-in	3
Enabling Communications Between WinRunner and your Delphi Application	6
Activating WinRunner with Delphi Support	10
Disabling Delphi Add-in Support	11

Before You Install

Welcome to the Delphi Add-in for WinRunner 6.0. The Delphi Add-in enables you to record and run tests on standard Delphi objects and to map Delphi objects to standard WinRunner object classes. With the Delphi Add-in you can read and set object properties and add GUI checkpoints to your script to check Delphi object properties as well as standard WinRunner properties.

This guide describes how to install Add-in support for Delphi objects and how to setup Delphi support with the TestSrv unit.

Before you begin to install the Delphi Add-in, please review the following pre-installation procedures.

Checking Your Package

Please make sure your package contains the items below. If any item is missing or damaged, contact Mercury Interactive or your local distributor.

Program Disks

Your package contains:

- 1 CD-ROM

System Requirements

To successfully run WinRunner with the Delphi Add-ins, you need the following minimum system requirements:

Platform	An IBM-PC or compatible with a Pentium® /100MHz or higher microprocessor.
Memory	32 MB of RAM memory.
Operating System	Windows 95, Windows 98, or Windows NT 4.0.
Prerequisites	WinRunner 6.0 standalone installation.

Installing Delphi Add-in Support

The Installation process for Delphi Add-in support is comprised of two stages:

- First, you install the WinRunner Delphi Add-in.
- Then you enable communications between WinRunner and your Delphi application.

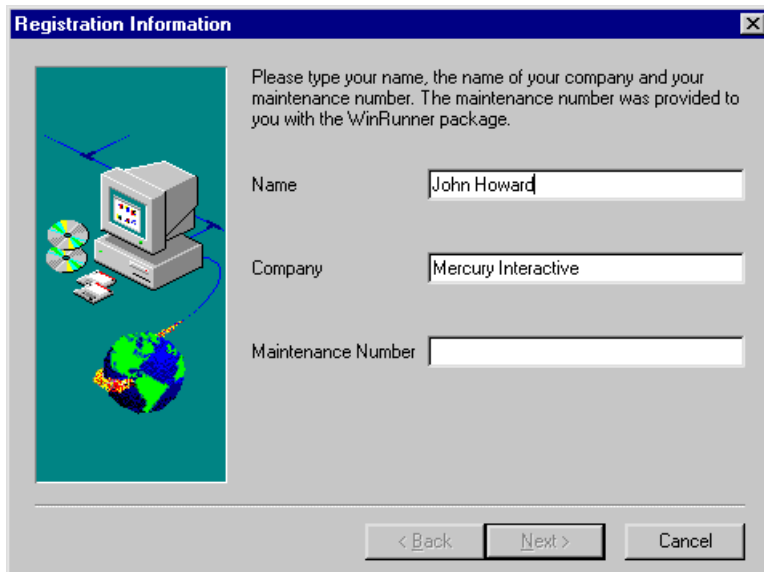
Installing the WinRunner Delphi Add-in

The Delphi Add-in setup program installs the Delphi Add-in in your WinRunner installation folder.

To install Delphi Add-in support:

- 1 Insert the CD-ROM into the drive from which you want to install. If you are installing from a network drive, connect to it.
- 2 Select **Run** on the **Start** menu.
- 3 Type the location from which you are installing, and `setup.exe`. For example, type `d:\setup.exe`.
- 4 In the **Registration Information** screen, type your name, the name of your company, and a WinRunner maintenance number. This number can be found in the Maintenance Pack Number envelope or on the bill of lading you received when you purchased WinRunner. Note that there is a single maintenance number for each team of users. (The maintenance number

replaces what was formerly a serial number for each purchased copy of WinRunner. The maintenance number identifies the customer.



The image shows a Windows-style dialog box titled "Registration Information". On the left is a graphic with a computer monitor, a tower unit, a CD-ROM, and a globe. On the right, there is instructional text and three text input fields. The first field is labeled "Name" and contains "John Howard". The second is labeled "Company" and contains "Mercury Interactive". The third is labeled "Maintenance Number" and is empty. At the bottom are three buttons: "< Back", "Next >", and "Cancel".

Registration Information

Please type your name, the name of your company and your maintenance number. The maintenance number was provided to you with the WinRunner package.

Name

Company

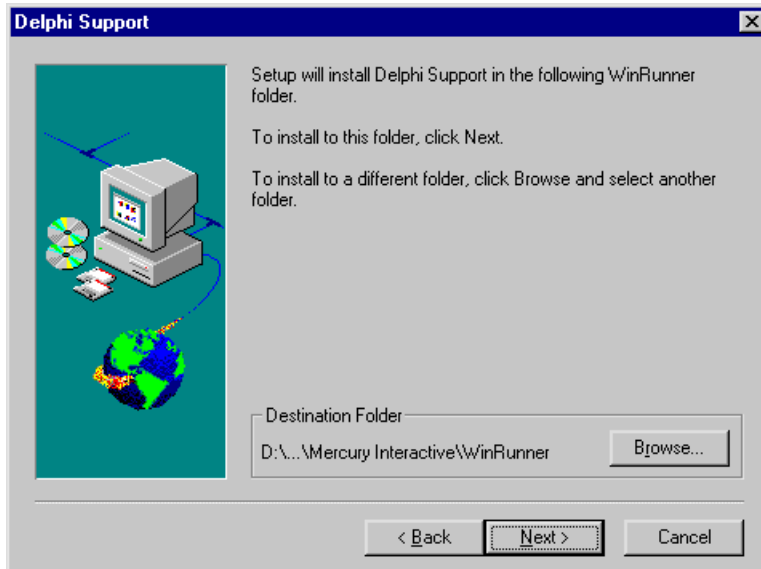
Maintenance Number

< Back Next > Cancel

Click Next.

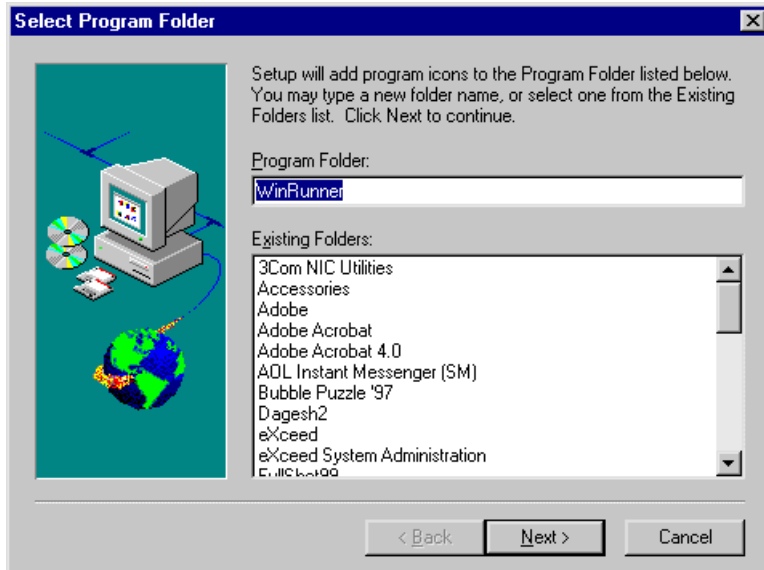
- 5 Click Yes to confirm the registration information.
- 6 Specify the folder in which to install the Delphi Add-in. The destination folder must be the WinRunner installation folder. If the installation folder

that appears is not the WinRunner installation folder, click **Browse** to find the correct destination folder.



Click **Next**. The installation process begins. To pause or quit the installation, click **Cancel**.

7 Select the program folder for the Delphi Add-in icons.



Click Next.

8 The Delphi Add-in Installation is complete. Click **Finish**. It is recommended to restart your computer.

- To read what's new in the Add-in support for Delphi, and any last minute information, select the Yes, I want to view the Read Me File check box.

Enabling Communications Between WinRunner and your Delphi Application

There are two ways to setup Delphi Support with the TestSrv Unit. You can:

- Run the Delphi Project Setup Wizard.
- Link to the TestSrv.pas module.

Using the Delphi Project Setup Wizard To Enable Communications

You can use the Delphi Project Setup WinRunner to add WinRunner's TestSrvr unit to your Delphi project. The TestSrvr unit is a WinRunner agent that handles communications between WinRunner and your Delphi application.

You must run the Wizard for each Delphi project that you want to test.

To Run the Delphi Project Setup Wizard:

- 1 Select Programs > WinRunner > Delphi Project Setup Wizard from the Start menu. The Wizard opens
- 2 Type the path or browse to the location of your Delphi project. Click Go..



- 3 The Delphi Wizard will add WinRunner's Test Srvr unit to your Delphi project. When it is finished, the Wizard's Finish window appears. Click Close.



- 4 Recompile your project.

Linking to the TestSrv.pas Module to Enable Communications

You can use the TestSrv.pas module to manually enable communications between WinRunner and your Delphi application.

You must perform the following steps for each project that you want to test.

To link to the TestSrv.pas module:

- 1 Add the *WinRunner Installation folder\TestSrvr* folder to your Delphi project search path or copy the contents of the *WinRunner Installation folder\TestSrvr* folder to your project folder.
- 2 Add TestSrv to the Users section of your applications project file (*project.dpr*) as shown in the example below:

```
program flight;  
uses  
    TestSrvr,  
    Forms,  
    Windows;
```

```

($R*.RES)
begin
    Application.Initialize
    Application.Title := 'Flight Reservation';
    Application.Run;
end.

```

Note: TestSrvr must be the first unit in your project.

3 Compile your Delphi project.

Note: If your application includes the TwwDBGrid from InfoPower, you must add support for this grid. For more information refer to

Configuring Support for TwwDBGrid

If your application includes the TwwDBGrid from InfoPower, follow the instructions below to enable support for this grid.

1 Add MercWwControl, to the Users section of your applications project file (*project.dpr*) after TestSrvr as shown in the example below:

```

program flight;
uses
    TestSrvr,
    MercWwControl,
    Forms,
    Windows;
($R*.RES)
begin
    Application.Initialize
    Application.Title := 'Flight Reservation';
    Application.Run;
end.

```

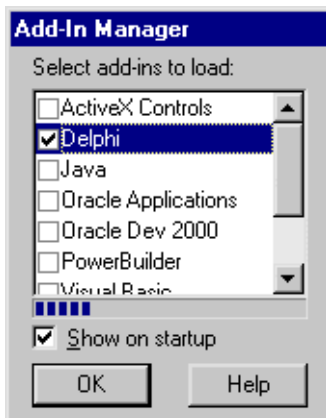
2 Recompile your application.

You are now ready to create and run tests on Delphi applications.

Activating WinRunner with Delphi Support



To start WinRunner with support for Delphi applications, select **Programs > WinRunner > WinRunner** from the Start menu. The Add-in Manager dialog box opens. Select **Delphi** and click **OK**.

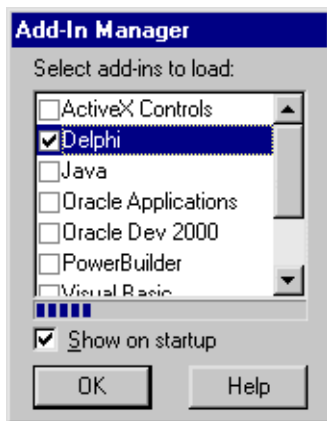


Disabling Delphi Add-in Support

If you decide not to use Delphi support, you can disable the Delphi add-in.

To disable the add-in support:

- 1 Select **Programs > WinRunner > WinRunner** from the **Start** menu to open WinRunner.
- 2 After the opening screen appears, the **Add-In Manager** dialog box opens for ten seconds. (If the **Add-In Manager** dialog box does not open, see the note below.)



To disable Delphi support, clear the **Delphi** check box.

- 3 Click **OK**. WinRunner opens with the add-in support disabled.

Note:

If the Add-In Manager dialog box does not open:

- 1 Start WinRunner.
 - 2 In Settings > Options > Environment tab, check Show Add-in Manager dialog for ___ seconds and fill in a comfortable amount of time in seconds. (The default value is 10 seconds.)
 - 3 Click OK.
 - 4 Close WinRunner. A WinRunner Message dialog opens asking “Would you like to save changes made in the configuration?” Click Yes.
 - 5 Open WinRunner again and proceed from Step 2 in “To disable the add-in support,” above.
-



Mercury Interactive Corporation

1325 Borregas Avenue
Sunnyvale, CA 94089 USA

Main Telephone: (408) 822-5200

Sales & Information: (800) TEST-911

Customer Support: (877) TEST-HLP

Fax: (408) 822-5300

Home Page: www.merc-int.com

Customer Support: web.merc-int.com

