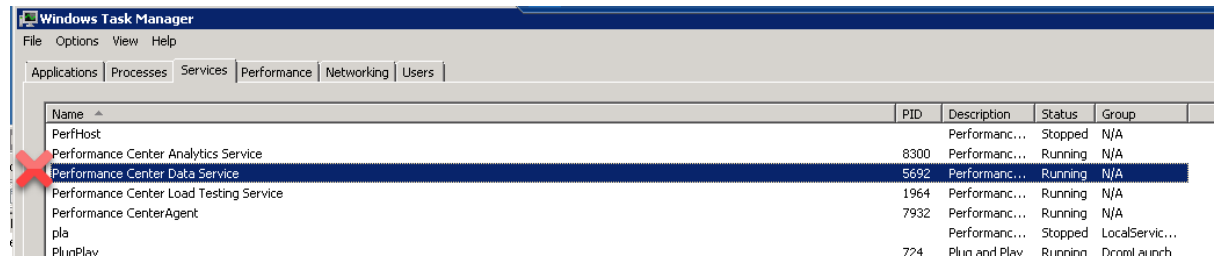


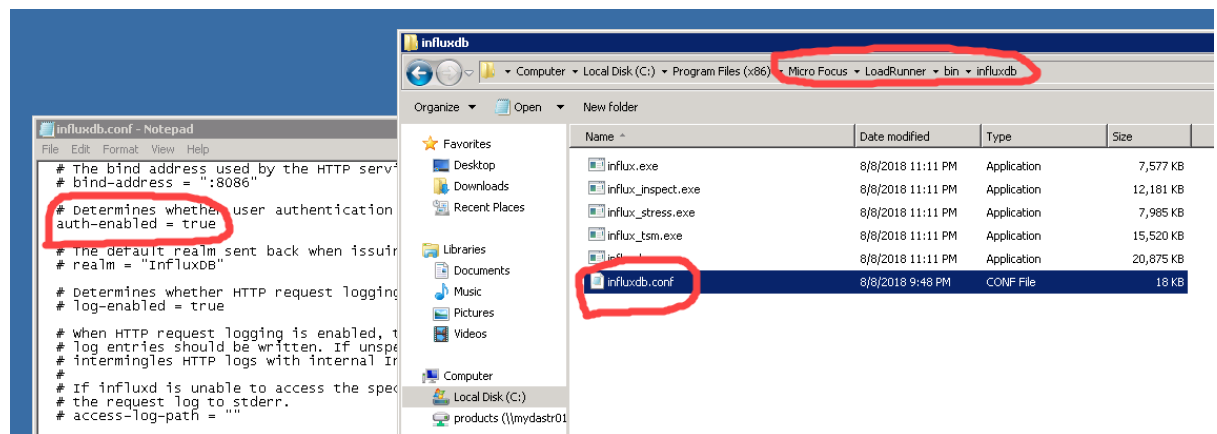
Manually creating user in Influx DB

For manually creating Influx DB user you need a REST client that runs on a Controller machine or on a machine having HTTP access to the Controller. In the example below ARC REST client is used.

1. Start task manager (on the Controller machine) and stop “Performance Center Data Service”



2. Open file <Host_Installation>\bin\influxdb\influxdb.conf and comment out line “auth-enabled = true”



3. Save the file and start the service “Performance Center Data Service”
4. In the REST client request a list of users from the Influx DB using a call GET <Contoller_name>:8086/query?q=SHOW USERS

Method GET Request URL http://myd-vm12365.hpeswlab.net:8086/query?q=SHOW USERS SEND

Parameters ^

Headers Variables

Toggle source mode Insert headers set

Header name Header value

ADD HEADER

Headers size: 0 bytes

200 OK 240.00 ms DETAILS

```

{
  "-results": [Array[1]]
    -0: {
      "statement_id": 0,
      "-series": [Array[1]]
        -0: {
          "-columns": [Array[2]]
            0: "user",
            1: "admin"
          },
          "-values": [Array[6]]
            -0: [Array[2]]
              0: "admin",
              1: true
            ],,
            -1: [Array[2]]
              0: "MY_USER",
              1: false
            ],,
          ],,
        ],,
      ],,
    ],,
  ],,
}

```

- Remove all the users from the Influx DB using calls
 POST <Contoller_name>:8086/query?q=DROP USER <username>

Method POST Request URL http://myd-vm12365.hpeswlab.net:8086/query?q=DROP USER dima1 SEND

Parameters ^

Headers Body Variables

Toggle source mode Insert headers set

Header name Header value

ADD HEADER

Content-Type header is not defined Headers size: 0

200 OK 240.00 ms DETAILS

6. After all the users are removed stop the service “Performance Center Data Service”
7. Uncomment the line “auth-enabled = true” in file
<Host_Installation>\bin\influxdb\influxdb.conf
8. Start the service “Performance Center Data Service”
9. In the REST client create user with name “admin” and password that is equal to the current PC system user. (This is the user that was by default IUSR_METRO when installing the PC Host). Suppose the password is ABCDCBA, then the REST request will be
POST <Contoller_name>:8086/query?q=CREATE USER “admin” WITH PASSWORD ‘ABCDCBA’ WITH ALL PRIVILEGES
10. In the REST client create user with same name as the PC system user and the password same as in item (9). Suppose the user name is MY_USER, then the REST request will be
POST <Contoller_name>:8086/query?q=CREATE USER “MY_USER” WITH PASSWORD ‘ABCDCBA’ WITH ALL PRIVILEGES
11. Run a Performance Test on this controller. If online graphs are still not displayed, please collect the logs from the Controller and contact the system support for further resolution.