

# Content Manager

Software Version 9.4

Installation and Configuration of Lotus Notes  
Integration



Document Release Date: August 2019  
Software Release Date: August 2019

## Legal notices

### Copyright notice

© Copyright 2008-2019 Micro Focus or one of its affiliates.

The only warranties for products and services of Micro Focus and its affiliates and licensors (“Micro Focus”) are set forth in the express warranty statements accompanying such products and services. Nothing herein should be construed as constituting an additional warranty. Micro Focus shall not be liable for technical or editorial errors or omissions contained herein. The information contained herein is subject to change without notice.

Microsoft, Office, Windows, Windows Vista, Windows 7, Windows 8 and Windows Server are U.S. registered trademarks of the Microsoft group of companies.

Oracle is a registered trademark of Oracle and/or its affiliates.

### Documentation updates

The title page of this document contains the following identifying information:

- Software Version number, which indicates the software version.
- Document Release Date, which changes each time the document is updated.
- Software Release Date, which indicates the release date of this version of the software.

You can check for more recent versions of a document through the [MySupport portal](#). Many areas of the portal, including the one for documentation, require you to sign in with a Software Passport. If you need a Passport, you can create one when prompted to sign in.

Additionally, if you subscribe to the appropriate product support service, you will receive new or updated editions of documentation. Contact your Micro Focus sales representative for details.

## Support

Visit the [MySupport portal](#) to access contact information and details about the products, services, and support that Micro Focus offers.

This portal also provides customer self-solve capabilities. It gives you a fast and efficient way to access interactive technical support tools needed to manage your business. As a valued support customer, you can benefit by using the MySupport portal to:

- Search for knowledge documents of interest
- Access product documentation
- View software vulnerability alerts
- Enter into discussions with other software customers
- Download software patches
- Manage software licenses, downloads, and support contracts
- Submit and track service requests
- Contact customer support
- View information about all services that Support offers

Many areas of the portal require you to sign in with a Software Passport. If you need a Passport, you can create one when prompted to sign in. To learn about the different access levels the portal uses, see the [Access Levels descriptions](#).

# Contents

Introduction .....	4
Installing and configuring the Lotus Notes client add-in .....	5
Prerequisites .....	6
Configuring Lotus Notes 8.5 or 9.0 .....	6
Appendix: Configure a new domino server .....	9
Verifying the configuration .....	12

## Introduction

To integrate your Lotus Notes application with Content Manager, you can:

- Set up the Lotus Notes client add-in by running **tsjlninst.nsf**, which Content Manager installs by default

The Lotus Notes client add-in requires deployment to every user's computer, it provides a richer user experience. For example, users can contribute additional metadata to the checked in email messages by using a New Record form.

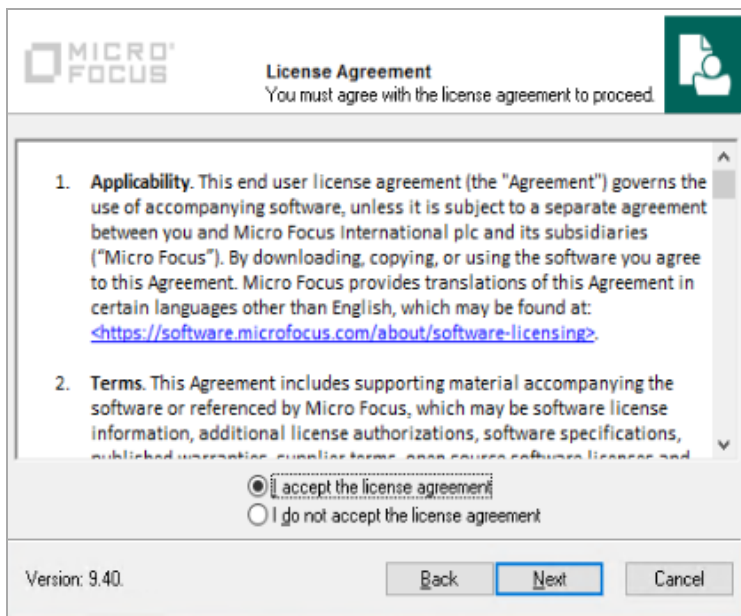
Lotus Notes integration by client add-in displays the Content Manager toolbar in users' Lotus Notes applications, which enables them to check in email, open email records, manage linked folders and Content Manager email integration itself directly from their Lotus Notes clients.

See below for more information about its configuration.

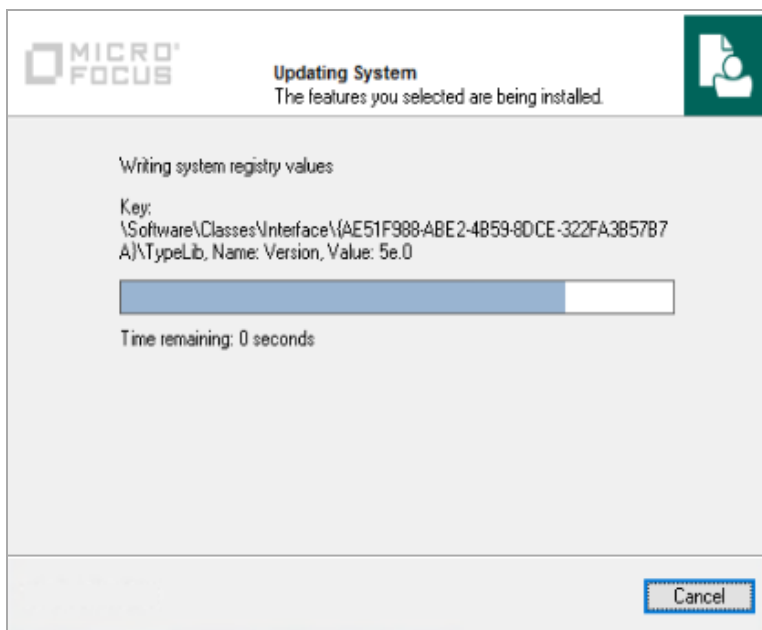
## Installing and configuring the Lotus Notes client add-in

The Content Manager Lotus Notes add-in integration installation file installs to the Content Manager installation folder as a part of the Content Manager client installation process.

1. With elevated user rights, from the installation media, run **CM\_COMComponents\_x86.msi** file. The Welcome dialog appears.
2. Click **Next**. The License Agreement dialog appears.



3. Select **I accept the license agreement** and click **Next**. The Destination Folder dialog appears.
4. Click **Next** to keep the default installation folder (recommended). The Ready to Install the Application dialog appears.
5. Click **Next**. The Updating System dialog appears.



The setup status dialog is displayed.

6. Click **Finish** to exit the setup wizard.

## Prerequisites

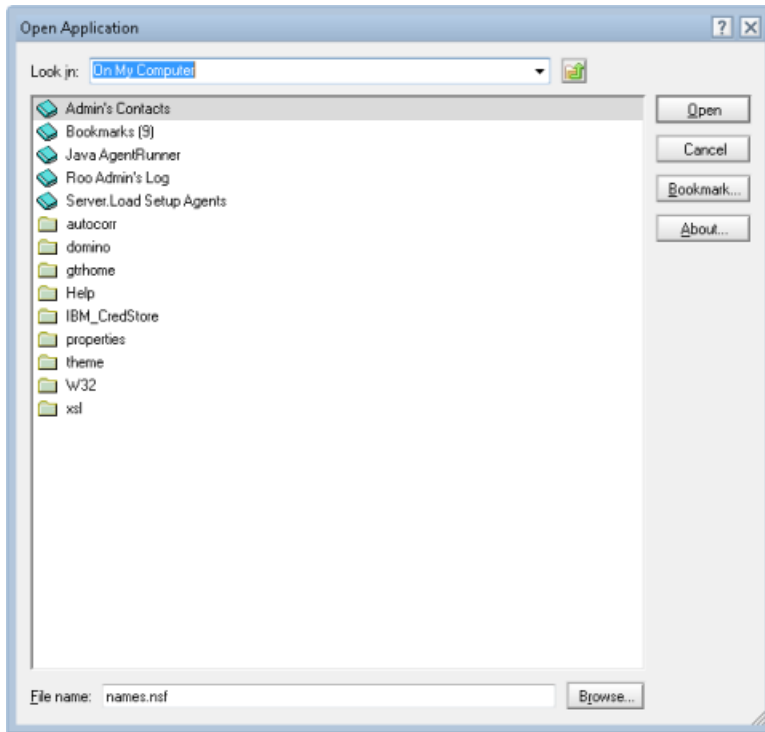
See [CM9.4\\_Spec.pdf](#) for high level prerequisites.

## Configuring Lotus Notes 8.5 or 9.0

The user configuring Lotus Notes must have **Designer** level access to the target user's mail database at a minimum, and the ability to create LotusScript/Java agents. It is recommended for an administrator to carry out this task.

1. In Lotus Notes, on the **File** menu, point to **Open** and then click **IBM Notes Application**.

The **Open Application** dialog box appears.

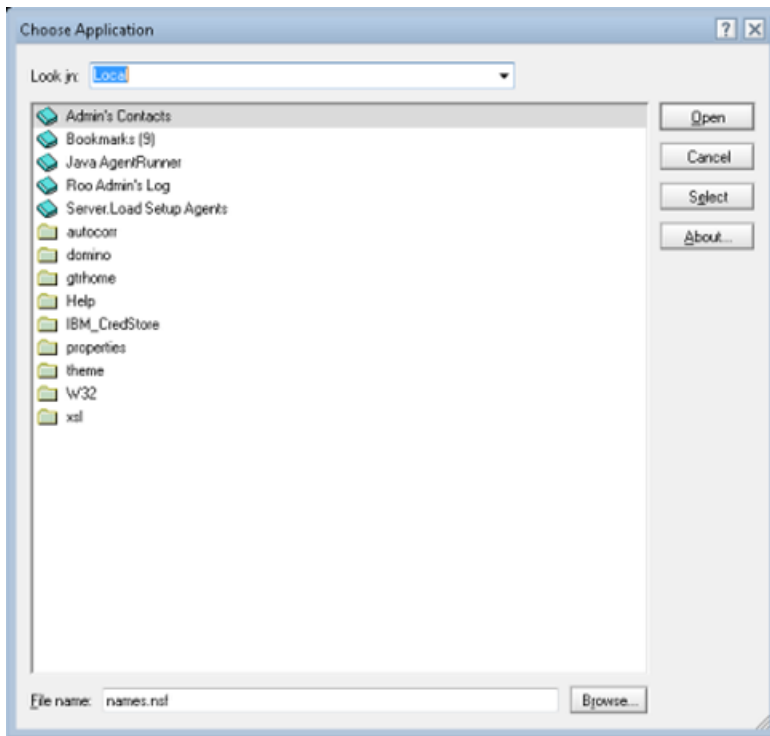


2. On the **Open Application** dialog, click **Browse** to navigate to the folder **C:\Program Files\Micro Focus\Content Manager**
3. Select the file **TSJLNInst.nsf** and click **Select**, and then click **Open**.

The tab **About Content Manager Lotus Notes Install - Design** appears.

4. In this tab, click **Install**.

The **Choose Application dialog** appears.



5. Navigate to the user's mail server and then select their mail box, and then click **OK**.

The message **Content Manager Toolbar Installation Complete** appears.

6. Restart Lotus Notes to make the Content Manager toolbar available.

The Content Manager integration for Lotus Notes and its toolbar is installed.

See the Content Manager client Help file **TRIM.chm** for information about using the toolbar.

**NOTE:** At various points during the configuration process, several Security Alerts may appear. In the **Execution Security Alert** dialog, under **What to Do**, select **Start trusting the signer to execute this action** and then click **OK**. Repeat until the dialog no longer appears.



## Appendix: Configure a new domino server

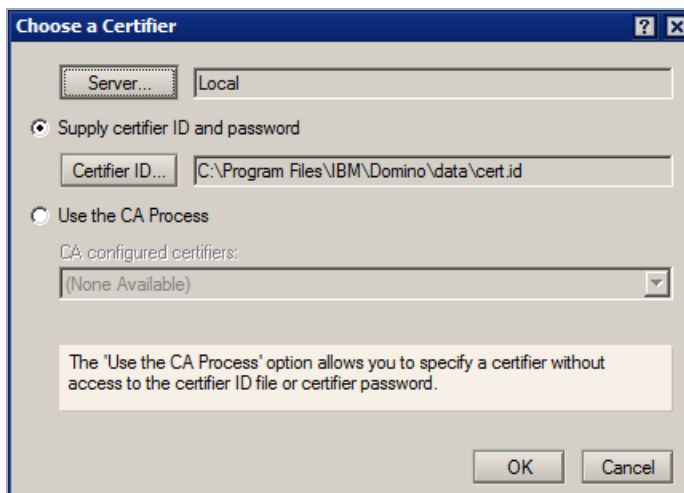
Installing and configuring the Domino Content Manager integration requires you to install, configure and finally disable a new domino server within your existing domino environment. The purpose of this section is to configure a new domino server, so it's ready to use, then disable it so the Content Manager Domino integration can then use this configuration. The Domino Content Manager integration appears as a pseudo domino server to the remainder of your domino environment.

There is no 64 bit Lotus Notes client, and therefore the Thin Domino service requires an installation of a 'fake' 64 bit Lotus Domino server to provide access to a 64 bit Lotus Notes runtime environment. This requires a bit more effort to establish than simply setting up the client and running the wizard.

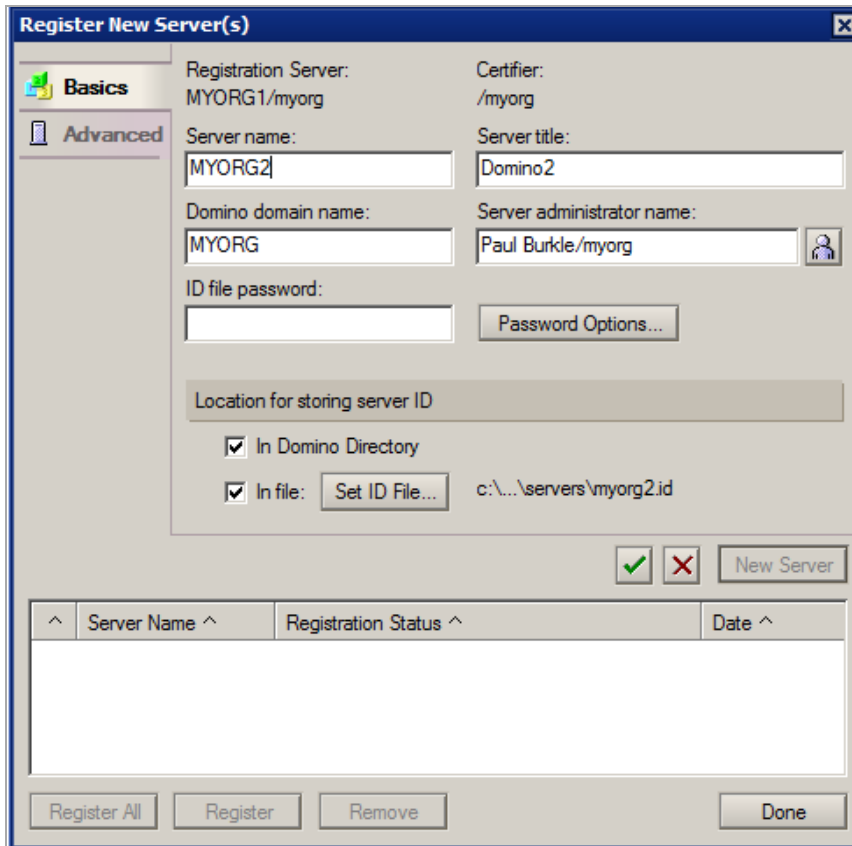
The following are the recommended steps to install the 64bit Lotus Notes runtime:

**NOTE:** Before installing the 'fake' server, register the new 'fake' server in your Domino domain. When creating the ID file for the 'fake' server, ensure it has a non-empty and adequately secure password.

1. Go to your existing Domino environment and open Domino Administrator.
2. Click the **Configuration** tab, then expand registration on the right hand side.
3. Under **Registration**, click **Server**. The Choose a certificate dialog appears.
4. Select the **Supply certificate ID and password** option, click **Certifier ID** and choose your certifier ID.



5. Enter your certifier.id password and click **OK**.
6. Register your new domino server.



After the registration, a new server document in the domino directory is created.

7. Now that the new server is registered, go to the WG server and install the domino server. Install 64bit Lotus Domino server and manually launch the newly installed Domino server program (by double-clicking the desktop shortcut), which will invoke the setup wizard.

The IBM Domino - InstallShield Wizard dialog appears.

- a. In the location to save files, it is recommended to keep the default location to save files. Click **Next**.

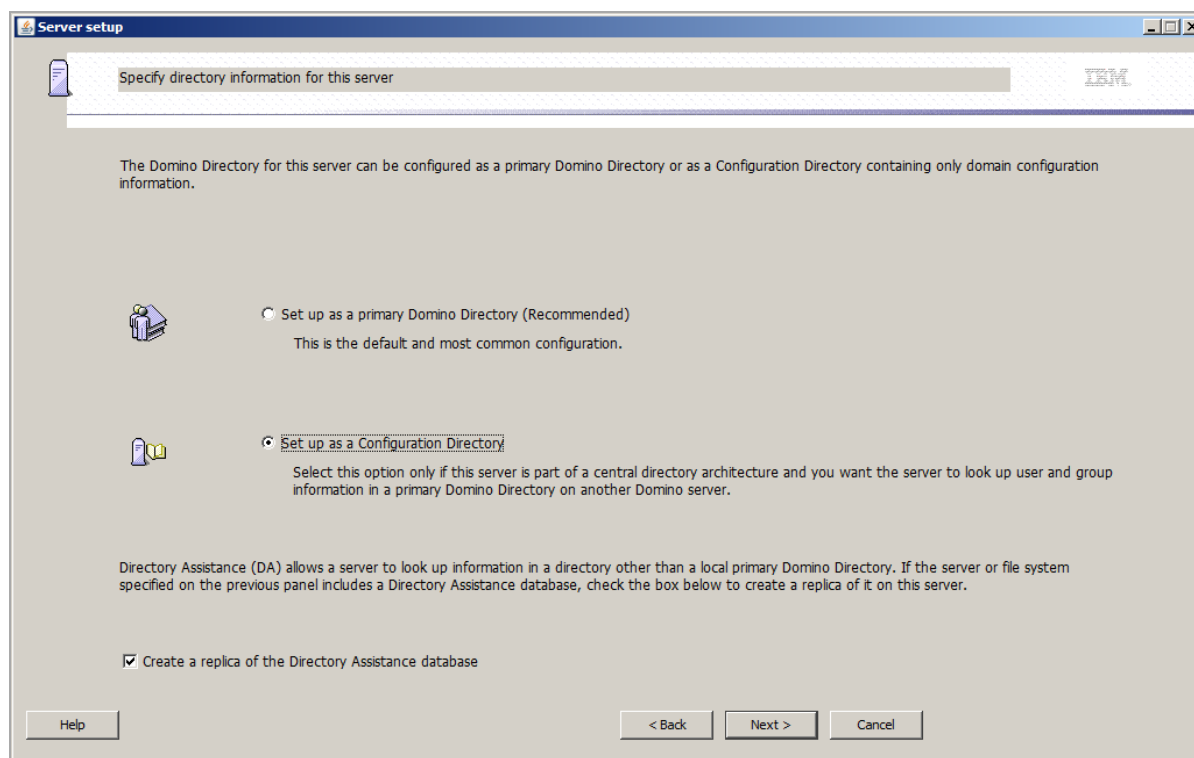
The welcome dialog is displayed.

- b. Click **Next**.
- c. Accept the terms in the license agreement and click **Next**.
- d. In the program file directory name, keep the default directory and click **Next**.
- e. In the data files directory name, keep the default directory and click **Next**.
- f. Choose the installation type and click **Next**.

The summary information dialog is displayed.

- g. Click **Next** to install the IBM Domino server.
- h. Once the installation is successful, launch the domino server.

- i. In the Server setup configuration, select the **Set up an additional server** option. Click **Next**.  
The server ID in the domino directory is based on the options chosen above when registering the new pseudo domino server (See [Choose the installation type and click Next.](#))
- j. Enter server.id password and click **Next**.
- k. Enter name for the additional server and click **Next**.
- l. In the set up internet service, do not choose any of the options. Click **Next**.
- m. You will be prompted to enable TCP/IP. Click **Next**.  
This will also populate the full host name in the domino directory.
- n. When asked to provide system databases, choose the 'Other Server' option, and enter the name of your real primary Lotus Notes Domino Directory server and network address that the THIN Domino service should use.  
This is used to replicate the existing domino directory to this machine.
- o. In this step, ensure to select both **Setup as a Configuration Directory** and **Create a replica of the Directory Assistance database**.



- p. To increase security and prevent unauthenticated access, select both **Prohibit Anonymous access to all databases and templates** and **Add LocalDomainAdmins group to all databases and templates**.
- q. Review the information displayed in the summary dialog and click **Setup**.
- r. Launch IBM Domino Server, start as a regular application.

Enter the password you assigned to this server and allow the server to run for some time until it finishes its initialization tasks and appears to be idle.

## Verifying the configuration

Perform the following to verify the configuration of Domino server:

1. Verify the connection to the main Domino Directory server by using the 'trace' command from the console. For example, 'trace myorg1/myorg'.
2. Verify that the new 64bit 'fake' Server's name is correctly listed in the main Domino Directory in the 'Servers' view.
3. Verify that the new 64bit 'fake' Server's name is correctly listed in the 'Local Domain Servers' group of the main Domino Directory.
4. Shutdown the 'fake' server by using the 'quit' command on the server console.
5. Disable the **Lotus Domino Server** and **Lotus Domino Diagnostics** services through the services control panel on your host.

Your domino runtime environment is now setup and configured to integrate with the Content Manager.