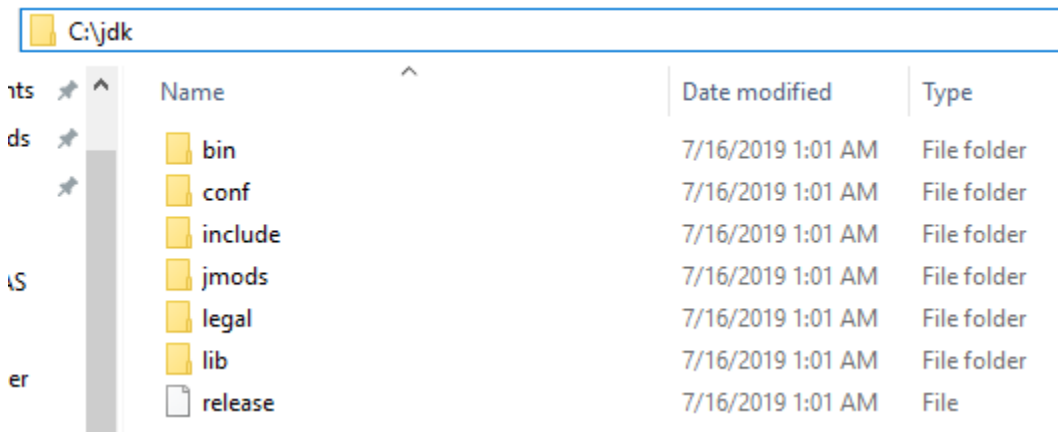
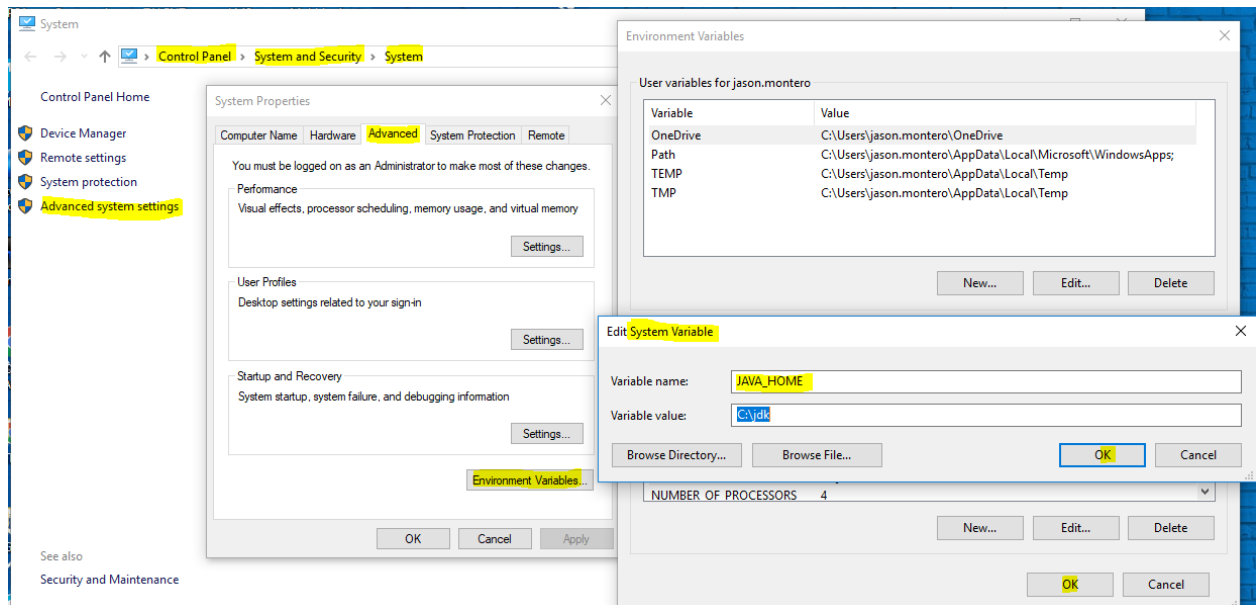


# Install VisualVM with OpenJDK

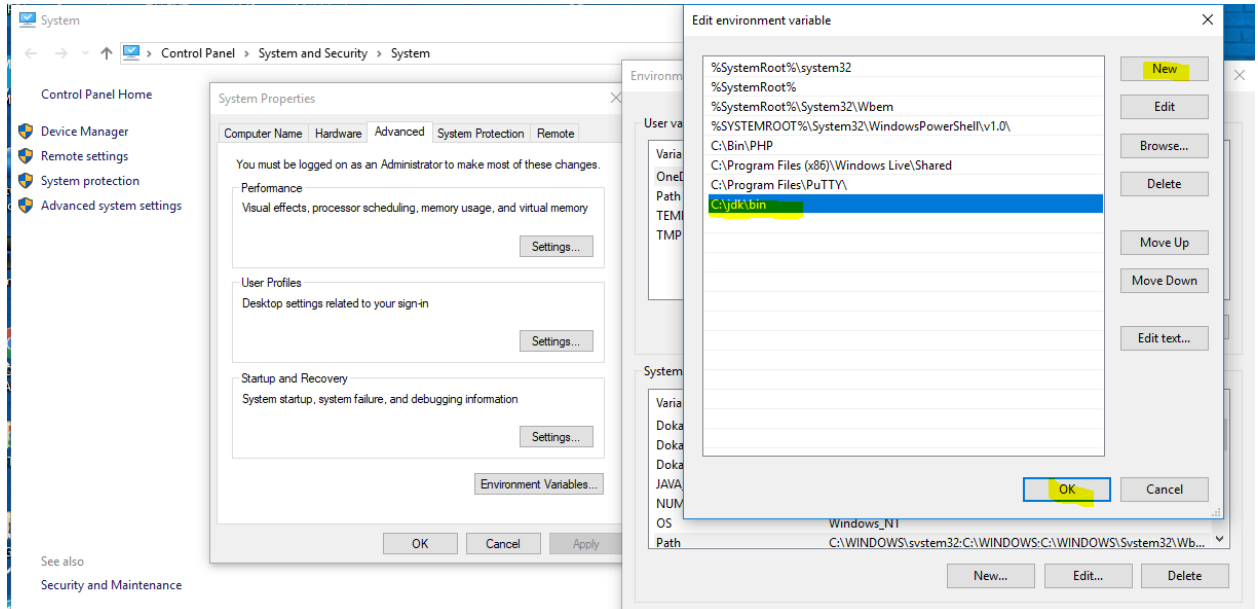
1. Download visualvm from:  
<https://visualvm.github.io/download.html>
2. Download Open JDK:  
<https://jdk.java.net/>
3. Unzip OpenJDK installer and pasted it on a prefer location i.e.:



4. Add Java variable to environment variables:



- Then add the OpenJDK path to Path variables on the “Environment variables”, in order to make java available on the command line:



- Confirm that OpenJDK was installed correctly by running the following command “Java -version”:

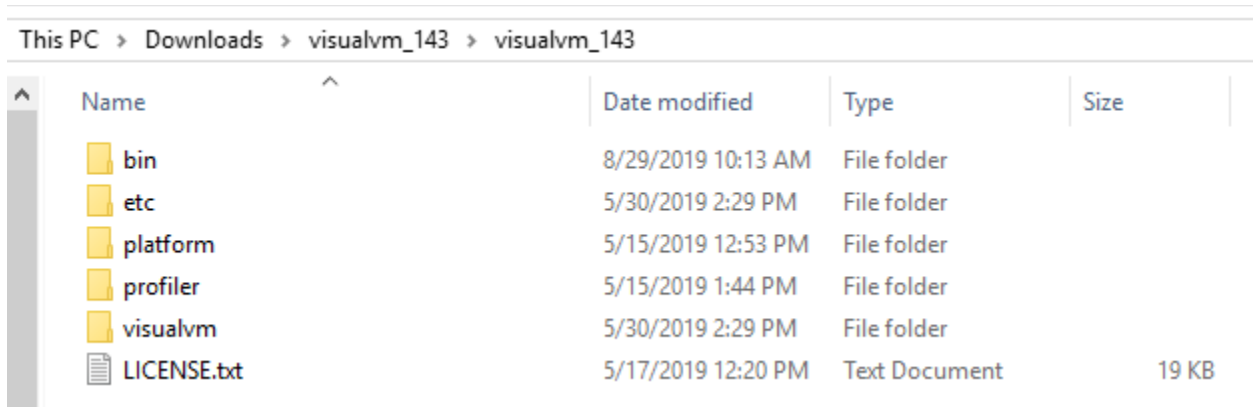
```
C:\WINDOWS\system32\cmd.exe

Microsoft Windows [Version 10.0.15063]
(c) 2017 Microsoft Corporation. All rights reserved.

C:\Users\jason.montero>java -version
openjdk version "12.0.2" 2019-07-16
OpenJDK Runtime Environment (build 12.0.2+10)
OpenJDK 64-Bit Server VM (build 12.0.2+10, mixed mode, sharing)

C:\Users\jason.montero>
```

- Unzip visualvm to any location you like:



- Open visualvm location on the command prompt:

```
C:\WINDOWS\system32\cmd.exe
Microsoft Windows [Version 10.0.15063]
(c) 2017 Microsoft Corporation. All rights reserved.

C:\Users\jason.montero>cd C:\Users\jason.montero\Downloads\visualvm_143\visualvm_143\bin
C:\Users\jason.montero\Downloads\visualvm_143\visualvm_143\bin>
```

- Start Visualvm from command prompt `visualvm.exe --jdkhome "C:\jdk"` :

```
C:\Users\jason.montero\Downloads\visualvm_143\visualvm_143\bin>visualvm.exe --jdkhome "C:\jdk"
```

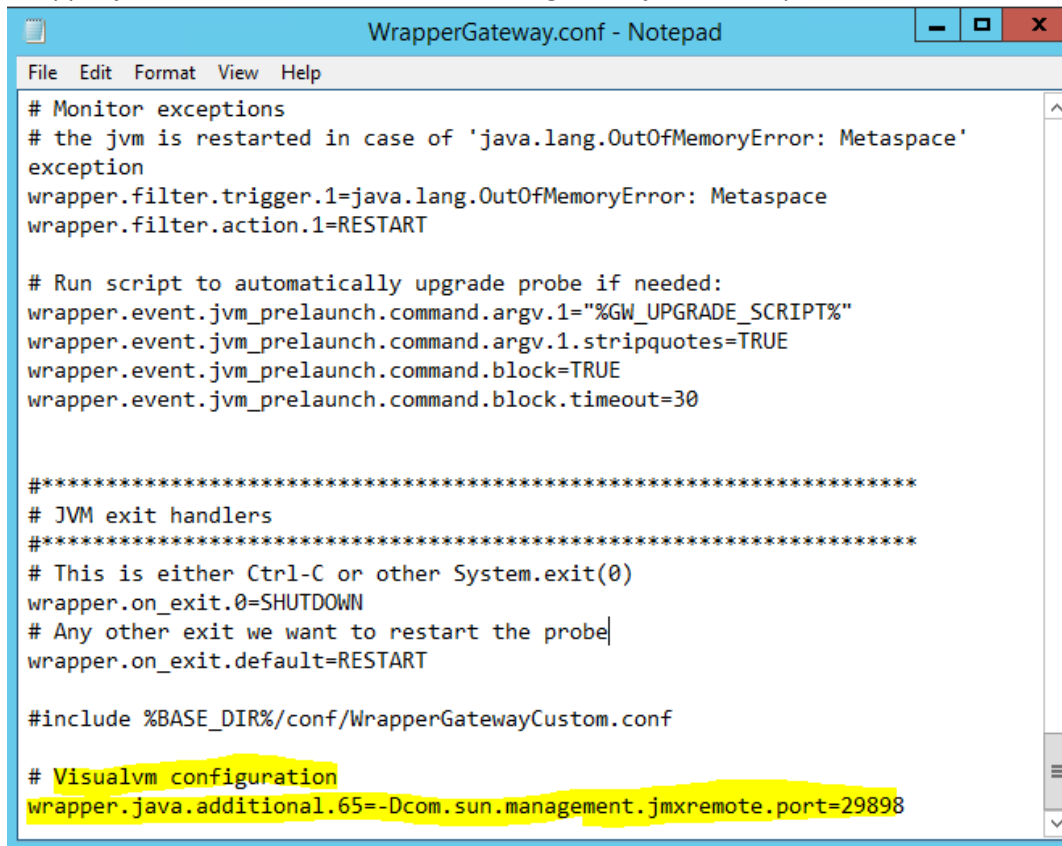
- Then Visualvm will start correctly.

## Connect Visualvm to an UCMDB Probe

- Go to Probe bin folder "C:\UCMDB\DataFlowProbe\bin".
- Edit the file named "WrapperGateway.conf".
- Add the following line:

# Visualvm configuration

wrapper.java.additional.65=-Dcom.sun.management.jmxremote.port=29898



```
WrapperGateway.conf - Notepad
File Edit Format View Help
# Monitor exceptions
# the jvm is restarted in case of 'java.lang.OutOfMemoryError: Metaspace'
exception
wrapper.filter.trigger.1=java.lang.OutOfMemoryError: Metaspace
wrapper.filter.action.1=RESTART

# Run script to automatically upgrade probe if needed:
wrapper.event.jvm_prelaunch.command.argv.1="%GW_UPGRADE_SCRIPT%"
wrapper.event.jvm_prelaunch.command.argv.1.stripquotes=TRUE
wrapper.event.jvm_prelaunch.command.block=TRUE
wrapper.event.jvm_prelaunch.command.block.timeout=30

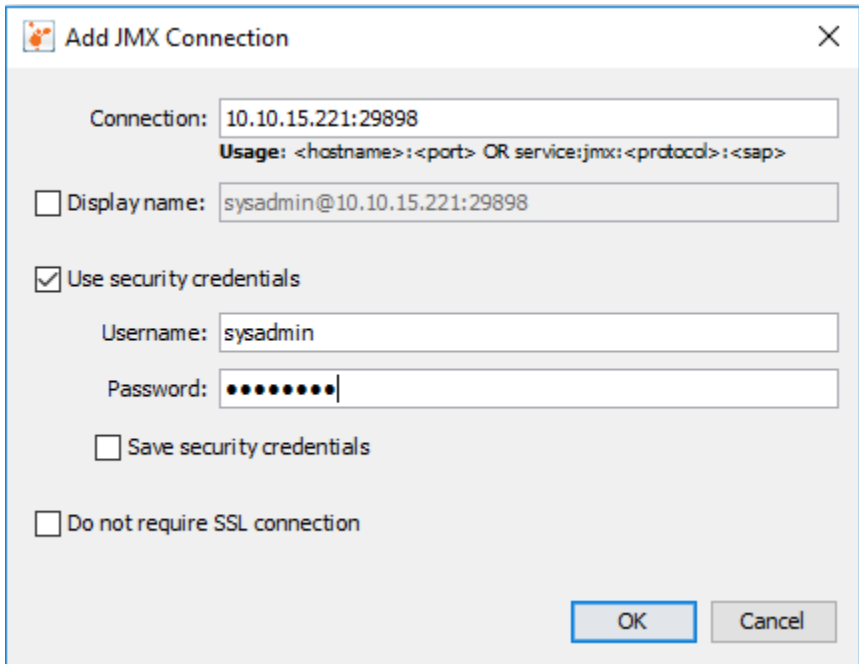
*****
# JVM exit handlers
*****
# This is either Ctrl-C or other System.exit(0)
wrapper.on_exit.0=SHUTDOWN
# Any other exit we want to restart the probe
wrapper.on_exit.default=RESTART

#include %BASE_DIR%/conf/WrapperGatewayCustom.conf

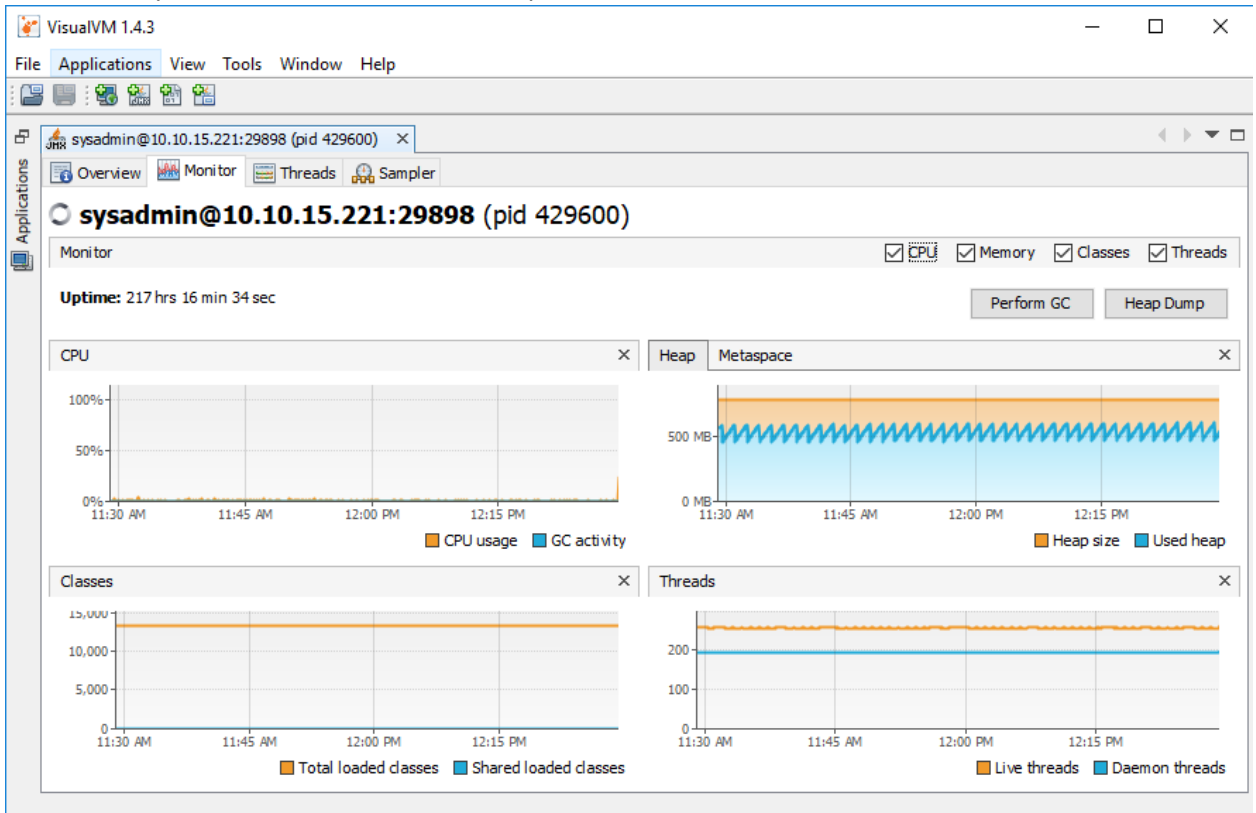
# Visualvm configuration
wrapper.java.additional.65=-Dcom.sun.management.jmxremote.port=29898
```

- Then restart the UCMDB Probe service.
- Next open Visualvm tool and choose file>add JMX connection.

- On connection add the host ip of the probe server, the port that we added on the wrapperGateway.conf file and the Probe JMX user and password:



- Click ok and you will be able to monitor the probe:



8. To generate a Heap Dump, just click on the “Heap Dump” button:

