

# Content Manager

Software Version 9.3

## Installation and Configuration of Lotus Notes Integration



Document Release Date: August 2018

Software Release Date: August 2018

## Legal notices

### Copyright notice

© Copyright 2008-2018 Micro Focus or one of its affiliates.

The only warranties for products and services of Micro Focus and its affiliates and licensors (“Micro Focus”) are set forth in the express warranty statements accompanying such products and services. Nothing herein should be construed as constituting an additional warranty. Micro Focus shall not be liable for technical or editorial errors or omissions contained herein. The information contained herein is subject to change without notice.

### Trademark notices

Microsoft, Office, Windows, Windows Vista, Windows 7, Windows 8 and Windows Server are U.S. registered trademarks of the Microsoft group of companies.

Oracle is a registered trademark of Oracle and/or its affiliates.

## Documentation updates

The title page of this document contains the following identifying information:

- Software Version number, which indicates the software version.
- Document Release Date, which changes each time the document is updated.
- Software Release Date, which indicates the release date of this version of the software.

To verify you are using the most recent edition of a document, go to <https://softwaresupport.softwaregrp.com/manuals>.

You will also receive new or updated editions of documentation if you subscribe to the appropriate product support service. Contact your Micro Focus sales representative for details.

To check for new versions of software, go to <https://www.hpe.com/software/entitlements>. To check for recent software patches, go to <https://softwaresupport.softwaregrp.com/patches>.

The sites listed in this section require you to sign in with a Software Passport. You can register for a Passport through a link on the site.

## Support

Visit the Micro Focus Software Support Online website at <https://softwaresupport.softwaregrp.com>.

This website provides contact information and details about the products, services, and support that Micro Focus offers.

Micro Focus online support provides customer self-solve capabilities. It provides a fast and efficient way to access interactive technical support tools needed to manage your business. As a valued support customer, you can benefit by using the support website to:

- Search for knowledge documents of interest
- Submit and track support cases and enhancement requests
- Access the Software Licenses and Downloads portal
- Download software patches
- Access product documentation
- Manage support contracts
- Look up Micro Focus support contacts
- Review information about available services
- Enter into discussions with other software customers
- Research and register for software training

Most of the support areas require you to register as a Passport user and sign in. Many also require a support contract.

You can register for a Software Passport through a link on the Software Support Online site.

To find more information about access levels, go to  
<https://softwaresupport.softwaregrp.com/web/softwaresupport/access-levels>.

# Contents

Introduction .....	5
Installing and configuring the Lotus Notes client add-in .....	6
Prerequisites .....	6
Configuring Lotus Notes 8.5 or 9.0 .....	6

## Introduction

To integrate your Lotus Notes application with Content Manager, you can:

- Set up the Lotus Notes client add-in by running **tsjlninst.nsf**, which Content Manager installs by default

The Lotus Notes client add-in requires deployment to every user's computer, it provides a richer user experience. For example, users can contribute additional metadata to the checked in email messages by using a New Record form.

Lotus Notes integration by client add-in displays the Content Manager toolbar in users' Lotus Notes applications, which enables them to check in email, open email records, manage linked folders and Content Manager email integration itself directly from their Lotus Notes clients.

See below for more information about its configuration.

## Installing and configuring the Lotus Notes client add-in

The Content Manager Lotus Notes add-in integration installation file installs to the Content Manager installation folder as a part of the Content Manager client installation process.

**IMPORTANT:** Before running and configuring the Lotus Notes integration on client machines, you will need to register TRIMSDK.dll, which can be found in the CM installation path.

To register the COM SDK, you need to run a Windows Command Prompt with elevated rights, set your directory to where Content Manager is installed and run the COM registration program as follows:

```
regsvr32 trimsdk.dll
```

## Prerequisites

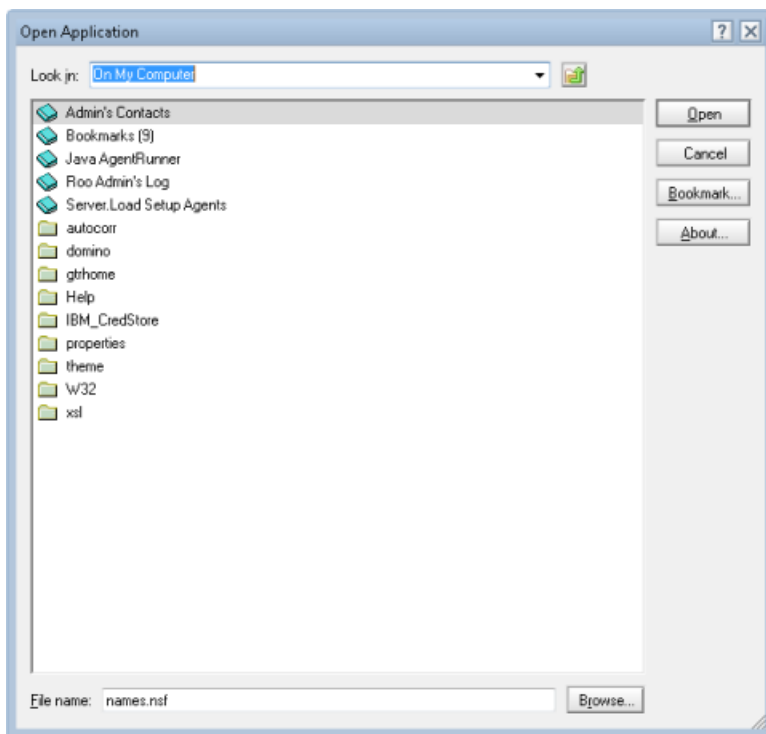
See [CM9.3\\_Spec.pdf](#) for high level prerequisites.

## Configuring Lotus Notes 8.5 or 9.0

The user configuring Lotus Notes must have **Designer** level access to the target user's mail database at a minimum, and the ability to create LotusScript/Java agents. It is recommended for an administrator to carry out this task.

1. In Lotus Notes, on the **File** menu, point to **Open** and then click **IBM Notes Application**.

The **Open Application** dialog box appears.

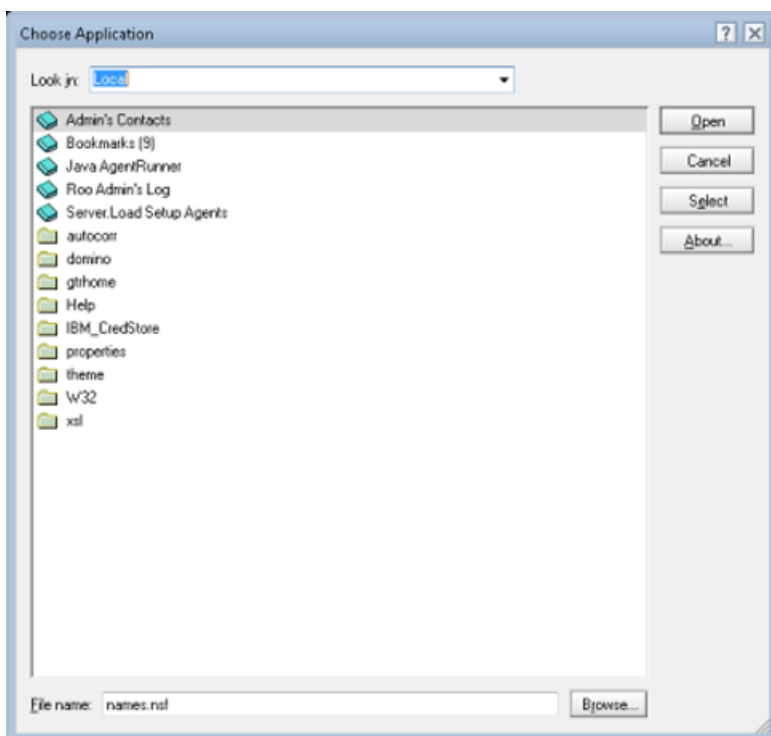


2. On the **Open Application** dialog, click **Browse** to navigate to the folder **C:\Micro Focus Content Manager**
3. Select the file **TSJLNInst.nsf** and click **Select** and then click **Open**.

The tab **About Content Manager Lotus Notes Install - Design** appears.

4. In this tab, click the button **Install**.

The **Choose Application** dialog appears.



5. Navigate to the user's mail server and then select their mail box, and then click **OK**.

The message **Content Manager Toolbar Installation Complete** appears.

6. Restart Lotus Notes to make the Content Manager toolbar available.

The Content Manager integration for Lotus Notes and its toolbar is installed.

See the Content Manager client Help file **TRIM.chm** for information about using the toolbar.

**NOTE:** At various points during the configuration process, several Security Alerts may appear. In the **Execution Security Alert** dialog, under **What to Do**, select **Start trusting the signer to execute this action** and then click **OK**. Repeat until the dialog no longer appears.