

Content Manager

Software Version 9.3

Service API



Document Release Date: August 2018

Software Release Date: August 2018

Legal notices

Copyright notice

© Copyright 2008-2018 Micro Focus or one of its affiliates.

The only warranties for products and services of Micro Focus and its affiliates and licensors (“Micro Focus”) are set forth in the express warranty statements accompanying such products and services. Nothing herein should be construed as constituting an additional warranty. Micro Focus shall not be liable for technical or editorial errors or omissions contained herein. The information contained herein is subject to change without notice.

Trademark notices

Microsoft, Office, Windows, Windows Vista, Windows 7, Windows 8 and Windows Server are U.S. registered trademarks of the Microsoft group of companies.

Oracle is a registered trademark of Oracle and/or its affiliates.

Documentation updates

The title page of this document contains the following identifying information:

- Software Version number, which indicates the software version.
- Document Release Date, which changes each time the document is updated.
- Software Release Date, which indicates the release date of this version of the software.

To verify you are using the most recent edition of a document, go to <https://softwaresupport.softwaregrp.com/manuals>.

You will also receive new or updated editions of documentation if you subscribe to the appropriate product support service. Contact your Micro Focus sales representative for details.

To check for new versions of software, go to <https://www.hpe.com/software/entitlements>. To check for recent software patches, go to <https://softwaresupport.softwaregrp.com/patches>.

The sites listed in this section require you to sign in with a Software Passport. You can register for a Passport through a link on the site.

Support

Visit the Micro Focus Software Support Online website at <https://softwaresupport.softwaregrp.com>.

This website provides contact information and details about the products, services, and support that Micro Focus offers.

Micro Focus online support provides customer self-solve capabilities. It provides a fast and efficient way to access interactive technical support tools needed to manage your business. As a valued support customer, you can benefit by using the support website to:

- Search for knowledge documents of interest
- Submit and track support cases and enhancement requests
- Access the Software Licenses and Downloads portal
- Download software patches
- Access product documentation
- Manage support contracts
- Look up Micro Focus support contacts
- Review information about available services
- Enter into discussions with other software customers
- Research and register for software training

Most of the support areas require you to register as a Passport user and sign in. Many also require a support contract.

You can register for a Software Passport through a link on the Software Support Online site.

To find more information about access levels, go to
<https://softwaresupport.softwaregrp.com/web/softwaresupport/access-levels>.

Contents

Content Manager Service API	5
Overview	5
Setup	5
Prerequisites	5
Installation	5
Upgrading ServiceAPI	6
Getting Started	7
Configuration file	7
Example	8
Troubleshooting	10
Uploading files larger than the default size	10
Issue	10
Solution	10

Content Manager Service API

Overview

The Content Manager Service API is a new Web service designed with a focus on Mobile and Web Consumers.

The bulk of the documentation for the service is hosted within the service itself and can be viewed after installation.

Additional information on the SDK can be found on <http://sdk.mfcm.xyz/>.

Setup

Prerequisites

See **CM9.3_Spec.pdf** for high level prerequisites.

Additionally, the computer which the Content Manager Service API is to be installed on, should have:

- In IIS, **Application Development Features**, the feature **ASP.NET** enabled.
- In IIS, **Security**, either one of the features **Windows Authentication** or **Basic Authentication**, or both enabled.
- .NET registered. If it is not registered, register it by running the command **C:\Windows\Microsoft.NET\Framework64\v4.0.30319\aspnet_regiis -e -enable** in a command prompt.

Installation

The Content Manager Service API installs as a feature of the main Content Manager installation. To install it, run **Setup_CM_xNN.exe** from your installation media, and select ServiceAPI in the **Feature Selection** dialog. See **CM9.3_Install.pdf** for details on installing the ServiceAPI. The ServiceAPI can also be installed via script using the **CM_Service_API_x64.msi**, an example script and the script properties can be found in **CM9.3_Install.pdf**.

NOTE: Whenever the ServiceAPI is installed, by default, all help files and examples are not installed. It is recommended that on a production server these are NOT installed as they increase the attack surface for hackers, these files should only be installed in your development environment.

See **CM9.3_Install.pdf** for details for further details on installing the ServiceAPI using **Setup_CM_x64.exe** and **CM_Service_API_x64.msi**.

The service installation does everything that is required for the setup. After completing the installation, you should have the following:

- Folder **C:\Program Files\Micro Focus\Content Manager\Service_API**
- Folder **C:\Program Files\Micro Focus\Content Manager\Service_API\Bin**
- Folder **C:\Micro Focus Content Manager\ServiceAPIWorkpath**

CAUTION:

The user account that is used as the identity for the IIS application **CMServiceAPI** requires full access rights to the **C:\Micro Focus Content Manager\ServiceAPIWorkpath** folder. This user is identified during the installation process in the **AppPool Account Configuration** dialog (see **CM9.3_Install.pdf** for further information).

- An IIS application called **CMServiceAPI** which points to the folder **C:\Program Files\Micro Focus\Content Manager\Service_API**

Authentication

By default, the service is set to use Windows authentication. You can change this to basic authentication in IIS, if you wish. If you do so, you will need to configure SSL to protect users' passwords.

Upgrading ServiceAPI

IMPORTANT: When upgrading to Content Manager 9.3, due to the changes in installation paths, the configuration files from the previous version installation paths are not copied into the new C:\Micro Focus Content Manager workpaths. These files will be available in the original installation path and any modifications will need to be copied from these files into the newly installed configuration files installed to, by default, C:\Program Files\Micro Focus\Content Manager

As a part of the Content Manager upgrade process the ServiceAPI web configuration files, `hptrim.config` and `web.config`, which are installed as a part of the Content Manager installation process are copied to the ServiceAPI work path folder, by default, C:\Micro Focus Content Manager\ServiceAPIWorkpath.

These copied files have the date and time of the upgrade prepended to the file name for easy identification, for example, `04_25_2015_2_23_Service_API_web.config`.

After upgrading any additional configuration fields that were added to the ServiceAPI configuration files can be copied out of these backup files and pasted into the new configuration files installed as a part of the upgrade.

See **CM9.3_Install.pdf** for details on upgrading the ServiceAPI.

Getting Started

The first thing to do before beginning development against the Content Manager Service API is to make sure you can access it. This can be done by pointing any Web browser at the following address:

<http://localhost/CMServiceAPI> - where *localhost* can be replaced by the IP address of the host computer.

After supplying authentication details as required, you will be forwarded to this page:

<http://localhost/CMServiceAPI/help/index>

Here you will find more detailed instructions on how to utilize the Content Manager Service API.

NOTE: The above steps are only required when you install the Content Manager ServiceAPI in your development environment. If you navigate to the ServiceAPI website and the help and example files are not installed you will get a HTTP 404 Not Found message.

Configuration file

Although the installation should create a correct configuration file, you may wish to change it later. It is saved in **C:\Program Files\Micro Focus\Content Manager\Service_API\hprim.config**.

Some of the relevant options are:

Option	Description
poolSize	The service pools database connections to improve performance. poolSize is the number of connections pooled before the server attempts to start removing stale connections from the pool.
autoPoolClean	When removing stale database connections from the pool, the service will operate in in one of two ways: <ul style="list-style-type: none"> • Auto - a task will run in the background to remove stale entries • Not auto - as each request comes in, it will attempt to remove stale entries before continuing with the request
databaseId	The service supports one Content Manager database at a time. Set the ID here.

Option	Description
workgroupServer port	The Workgroup Server port as set in Content Manager Enterprise Studio.
workgroupServer name	Use local if the service is on the same computer as the Workgroup Server. Otherwise, use the server name.
workgroupServer workPath	File system location that Content Manager uses to cache documents as users download them.

Example

The following example contains a number of options not described in the preceding table. These are for the purpose of modifying the Service API behavior and are described in more detail in the on-line documentation published within the Service API.

```
<?xml version="1.0" encoding="utf-8" ?>
<hptrim poolSize="1000"
  autoPoolClean="true"
  xmlns="http://HP.HPTRIM.CMIS/hptrimConfig.xsd"
  xmlns:xsi="http://www.w3.org/2001/XMLSchema-instance"
  xsi:noNamespaceSchemaLocation="hptrimConfig.xsd">

  <setup databaseId="D1" />
  <workgroupServer port="1137"
    workPath="C:\Micro Focus Content Manager\ServiceAPIWorkpath"
    name="local"
  />
  <defaultProperties>
    <clear />
    <add name="Location" properties="FormattedName" />
    <add name="Classification" properties="Title" />
    <add name="Record" properties="Title" />
  </defaultProperties>
  <customPropertySets>
    <clear />
```



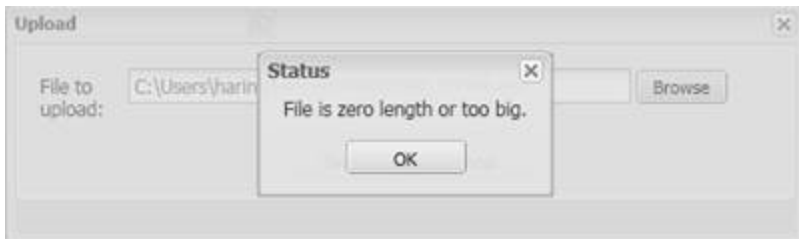
```
        <add name="RecordMobileList"
            trimType="Record"
            properties="Title,DocumentSize,OwnerLocation,DocumentType,DateModified,DateLastUpdated,Classification,IsElectronic,Extension,Icon,IsContainer,Number,IsFavorite"
        />
    <add name="RecordMobileSync"
        trimType="Record"
        properties="Container"
        propertySets="MobileList"
    />
    <add name="SavedSearchMobileList"
        trimType="SavedSearch"
        properties="Name,Description,Icon,QueryString,FilterString,SortString,IsFavorite"
    />
    <add name="TodoItemMobileList"
        trimType="SavedSearch"
        properties="Todo,Assignee,DateDue" />
    <add name="PropertyOrFieldDefMobileDetails"
        trimType="SavedSearch"
        properties="Caption"
    />
    <add name="RecordMobileDetails"
        trimType="Record"
        properties="IsFavorite,Extension,DateModified,SuggestedFileName"
        propertySets="DataGridVisible,Detailed"
    />
</customPropertySets>
</hptrim>
```

Troubleshooting

Uploading files larger than the default size

Issue

When creating new records and uploading files of more than 4096 KB, which is the default size in ASP.NET, the status warning **File is zero length or too big** may appear:



Solution

Change the default request size in the file **web.config**.

In the example below, the parameter **maxRequestLength** in the file has been changed to **51200**, which is the number of KB and equals 50 MB.

```
<configuration>
  <system.web>
    <httpRuntime maxRequestLength="51200"/>
  </system.web>
</configuration>
```