

# **AssetCenter™**

## **Version 3.0**

# **Physical Data Models**

March 29, 1999

ITEM00454



© Copyright Peregrine Systems, Inc., 1999. All Rights Reserved.

Sybase SQL Anywhere Runtime: © Copyright Sybase, Inc. 1992-1995; Portions © Copyright Rational Systems, Inc. 1992-1994.

Information contained in this document is proprietary to Peregrine Systems, Inc., and may be used or disclosed only with written permission from Peregrine Systems. This manual, or any part thereof, may not be reproduced without the prior written permission of Peregrine Systems, Inc.

This document refers to numerous products by their trade names. In most, if not all cases, these designations are claimed as Trademarks or Registered Trademarks by their respective companies.

**Peregrine Systems, ServiceCenter, AssetCenter and Remote Management** are registered trademarks of Peregrine Systems, Inc.

The software described in this manual is supplied under license or nondisclosure agreement. The software may be used or copied only in accordance with the terms of the agreement.

Peregrine Systems reserves the right to modify the information contained in this document without notice.

The software is subject to modification and it is possible that the supplied documentation is not fully coherent with the version that you have. These modifications do not compromise proper understanding of the software. For further information on the most recent modifications, please refer to the "readme.txt" file.

The names of companies and individuals used in the sample database and in examples in the manuals are fictitious and are intended to illustrate the use of the software. Any resemblance to actual companies or individuals, whether past or present, is purely coincidental.

### **AssetCenter data integrity**

AssetCenter is extremely rich in functionality. This richness relies on a complex database structure: The database contains a large number of tables, fields, links and indexes; certain intermediary tables are not displayed by the graphical interface; certain links, fields and indexes are automatically created, deleted or modified by the software.

Only the interfaces designed for AssetCenter (graphical interface, APIs, import program, WEB interface and gateways) are capable of modifying the database with respect to its integrity. **You must never modify the structure and/or the contents of the database by any means other than those intended for use with the software;** such modifications are highly likely to corrupt the database and bring about symptoms such as involuntary loss or modification of data or links, creation of "ghost" links or records, serious error messages, etc. Alterations to the database resulting from manipulations of this type void the guarantee and technical support provided by Peregrine Systems.

### **Environments supported by AssetCenter**

The list of environments supported by AssetCenter can be found in the manual entitled "Installation and Upgrade Guide". Using AssetCenter in environments other than those for which it is intended is done at the risk of the owner. Alterations made to the database resulting from using AssetCenter in environments other than those for which it is intended void the guarantee and technical support provided by Peregrine Systems.

# Foreword

This manual describes in detail the physical data models of AssetCenter. Here are the conventions used to represent the links and the tables.

## Tables

For all tables except the intermediary tables, the SQL name of the table appears as its title at the top of the table. Its description appears below.

For intermediary tables, the SQL name of the table appears as its title at the top of the table. Intermediary tables are used in N-N type relations and do not appear in the AssetCenter interface. Unlike usual tables, intermediary tables (sometimes called relational tables) do not have a primary key.

## Links

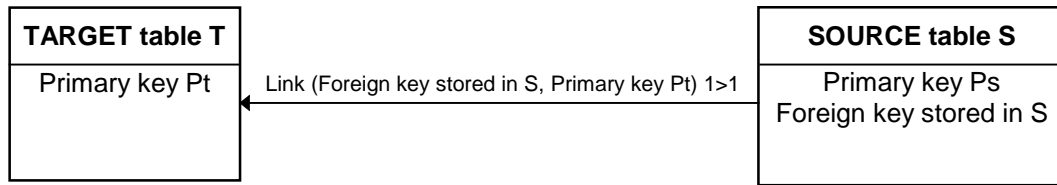
Link comments have the form <Link SQL Name (foreign key, primary key) Cardinality>.

A link cardinality can have three forms:

- **n>1**: link n-1 between the source table and the target table:
  - One record in the source table can be linked to only one record in the target table.
  - One record in the target table can be linked to n records in the source table.
- **1>n**: link 1-n between the source table and the target table:
  - One record in the source table can be linked to n records in the target table.
  - One record in the target table can be linked to only one record in the source table.
- **1>1**: link 1-1 between the source table and the target table.
  - One record in the source table can be linked to only one record in the target table and vice-versa.

### 1-1 link

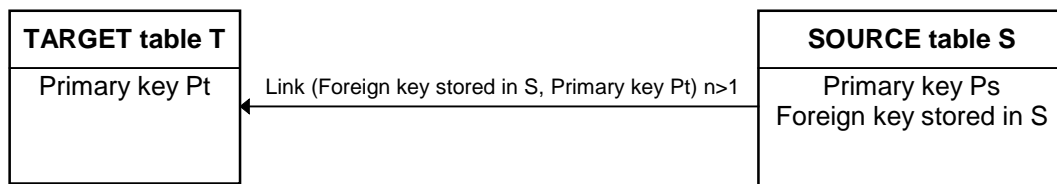
The diagram below illustrates a 1-1 link between 2 tables:



**1-1 link between source and target tables**

### 1-n or n-1 link

The diagram below illustrates a n-1 link between 2 tables:

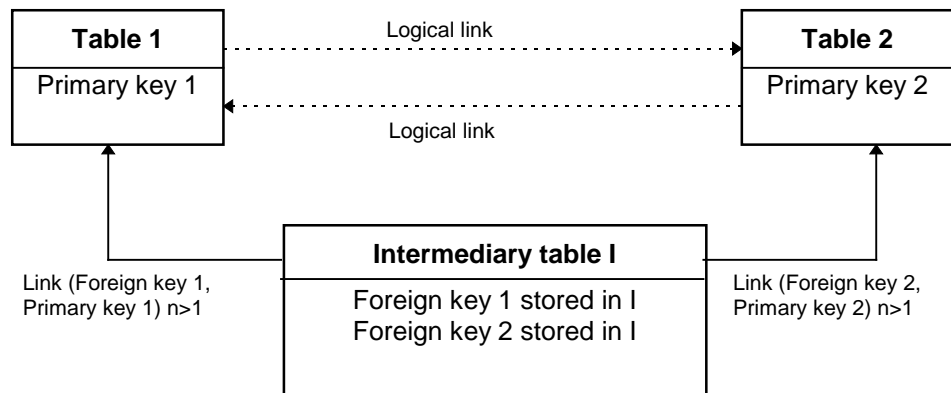


**n-1 link between source and target tables**

In this example, one record in the target table can be linked to n records in the source table and one record in the source table can be linked to only one record in the target table.

### n-n link with an intermediary table

The following diagram shows a n-n link using an intermediary table.



**n-n link between tables 1 and 2**

AssetCenter's interface only shows the logical links between the tables.

---

# Contact Peregrine Systems

## World Headquarters

Peregrine Systems, Inc.  
3611 Valley Centre Drive  
San Diego, CA 92130  
USA  
Tel: +1 619 481 5000 or 800 638 5231  
Fax: +1 619 481 1751  
Web: <http://www.peregrine.com>

Customer support:  
Tel: +1 619 794 7402 or 800 960 9998  
Fax: +1 619 794 6028  
Web: <http://support.peregrine.com>  
E-mail: [support@peregrine.com](mailto:support@peregrine.com)  
Open Monday to Friday 5:00 AM to 5:30 PM (PST)

## France

Peregrine Systems  
Tour Franklin - La Défense 8  
92042 Paris - La Défense Cedex  
France  
Tel: +33 (0)1 47 73 11 11  
Fax: +33 (0)1 47 73 11 12

Customer support:  
Tel: +33 (0) 800 505 100  
Fax: +33 (0)1 47 73 11 61  
E-mail: [frsupport@peregrine.fr](mailto:frsupport@peregrine.fr)  
Open Monday to Friday 8:00 AM to 6:00 PM (local time)

## Germany

Peregrine Systems GmbH  
Bürohaus ATRICOM  
Lyoner Strasse 15  
60528 Frankfurt  
Germany  
Tel: +49 (0)69 66 80 260  
Fax: +49 (0)69 66 80 2626

Customer support:  
Tel: +49 (0)69 66 80 260  
Fax: +49 (0)69 66 80 2626  
E-mail: [psc@peregrine.de](mailto:psc@peregrine.de)  
Open Monday to Friday 8:00 AM to 5:00 PM (local time)

## **United Kingdom**

Peregrine Systems, Ltd.  
Ambassador House  
Paradise Road  
Richmond  
Surrey TW9 1SQ  
UK  
Tel: +44 (0)181 332 9666  
Fax: +44 (0)181 332 9533

Technical Support E-mail: [uksupport@peregrine.com](mailto:uksupport@peregrine.com)

Customer support:  
Tel: +44 (0)181 334 5890  
E-mail: [uksupport@peregrine.com](mailto:uksupport@peregrine.com)  
Open Monday to Friday 8:00 AM to 6:00 PM (local time)

## **Denmark**

Peregrine Systems AS  
Naverland 2, 12th fl.  
2600 Glostrup  
Denmark  
Tel: +45 4346 7676  
Fax: +45 4346 7677

Customer support:  
Tel: +45 7731 7776  
Fax: +45 4346 7677  
E-mail: [nordic@peregrine.com](mailto:nordic@peregrine.com)  
Open Monday to Friday 8:30 AM to 4:00 PM (local time)

## **The Netherlands, Belgium and Luxembourg**

Peregrine Systems BV  
Botnische Golf 9a  
Postbus 244  
3440 AE Woerden  
The Netherlands  
Tel: +31 348 43 7070  
Fax: +31 348 43 7080

Customer support:  
Tel: 0800 0230 889 (The Netherlands only)  
Fax: +31 348 43 7080  
E-mail: [benelux.support@peregrine.com](mailto:benelux.support@peregrine.com)  
Open Monday to Friday 8:00 AM to 6:00 PM (local time)

## **Singapore**

Peregrine Systems Pte.Ltd  
#03-16

CINTECH III  
77 Science Park Drive  
Singapore Science Park  
118256  
Singapore  
Tel: +65 778 5505  
Fax: +65 777 3033

## Italy

Peregrine Systems, S.r.l.  
Via Monte di Pietà, 21  
I-20121 Milano  
Italy  
Tel: +39 (02) 86 33 72 30  
Fax: +39 (02) 86 33 77 20  
  
Customer support:  
Tel: +39 (02) 86337230  
Fax: +39 (02) 86337400

## Sweden

Peregrine Systems AB  
Frösundaviks Allé 15, 4th floor  
S-169 70 Solna  
Sweden  
Tel: +46 8 655 36 04  
Fax: +46 8 655 26 10  
  
Customer support:  
Tel: +45 7731 7776  
Fax: +45 4346 7677  
E-mail: [nordic@peregrine.com](mailto:nordic@peregrine.com)  
Open Monday to Friday 8:30 AM to 4:30 PM (local time)

## Asia and Pacific

Customer support (based in USA):  
Tel: +1 619 794 7402 or 800 960 9998  
Fax: +1 619 794 6028  
E-mail: [apsupport@peregrine.com](mailto:apsupport@peregrine.com)  
Open Monday to Friday 5:00 AM to 5:30 PM (PST)

---

# Conventions

The following notation is used for commands:

[ ]	Square brackets denote an optional parameter. Do not type
-----	---

	them in your command. Exception: In BASIC scripts, square brackets are used to denote the data access path and must be included in the script: [Link.Link.Field]
< >	Brackets denote a parameter in plain language. Do not type them. Substitute the text with the appropriate information.
{ }	Curly brackets denote a series of parameters. Only one of these parameters may be used. Do not type these curly brackets in your command.
	A pipe is used to separate a series of parameters contained within curly brackets.
*	An asterisk added to the right of square brackets means that the formula shown can be repeated several times.

The following text formats have given meanings:

<b>Fixed width characters</b>	DOS command.
<code>Example</code>	Example of code or command.
...	Code or command omitted.
"Object name"	The names of fields, tabs, menus and files are shown within double quotes.
<b>Note</b>	Important note.

---

## Send us your comments

We want to deliver the most accurate documentation possible.

Any comments would be greatly appreciated.

Send any remarks to [documentation@peregrine.com](mailto:documentation@peregrine.com).



# Table of contents

---

<b>1. Asset Management</b>	<b>1</b>
1.1. Main tables linked to assets	1
1.2. Main tables linked to software installations	2
1.3. Main tables linked to products	3
1.4. Main tables linked to adjustments	4
1.5. Main tables linked to connections	5
1.6. Main tables linked to stocks	6
1.7. Main tables linked to consumptions	7
1.8. Main tables linked to reservations	8
1.9. Main tables linked to work orders	9
1.10. Main tables linked to projects	10

---

<b>2. Procurement Management</b>	<b>11</b>
2.1. Main tables linked to procurement	11
2.2. Main tables linked to requests	12
2.3. Main tables linked to estimates	13
2.4. Main tables linked to purchase orders	14
2.5. Main tables linked to invoices	15
2.6. Main tables linked to deliveries	16

---

<b>3. Contracts and Leasing Management</b>	<b>17</b>
--	-----------

---

<b>4. Cost Management</b>	<b>18</b>
4.1. Main tables linked to expense lines	18
4.2. Main tables linked to taxes	19

---

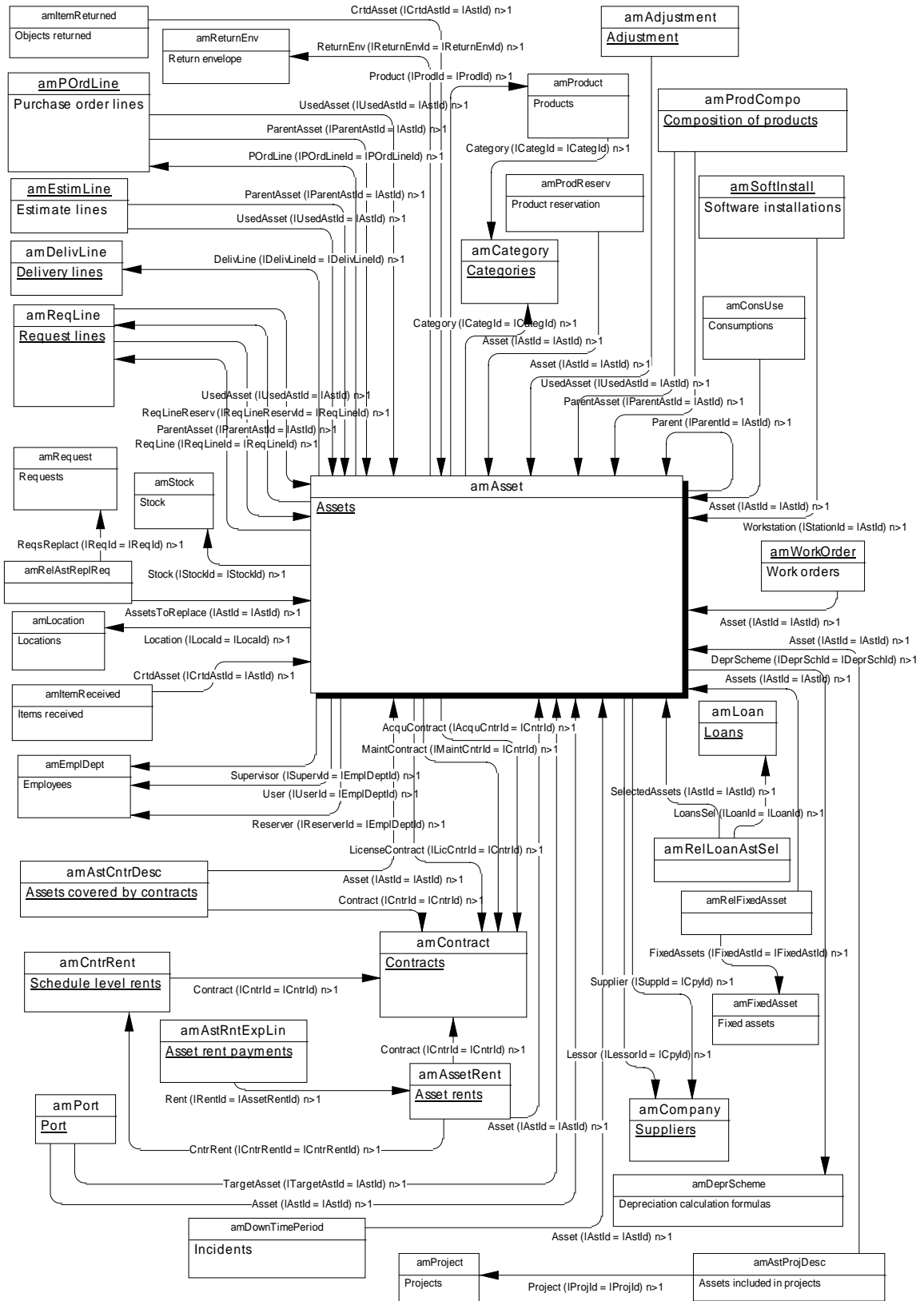
<b>5. Main tables linked to workflow</b>	<b>20</b>
--	-----------

---

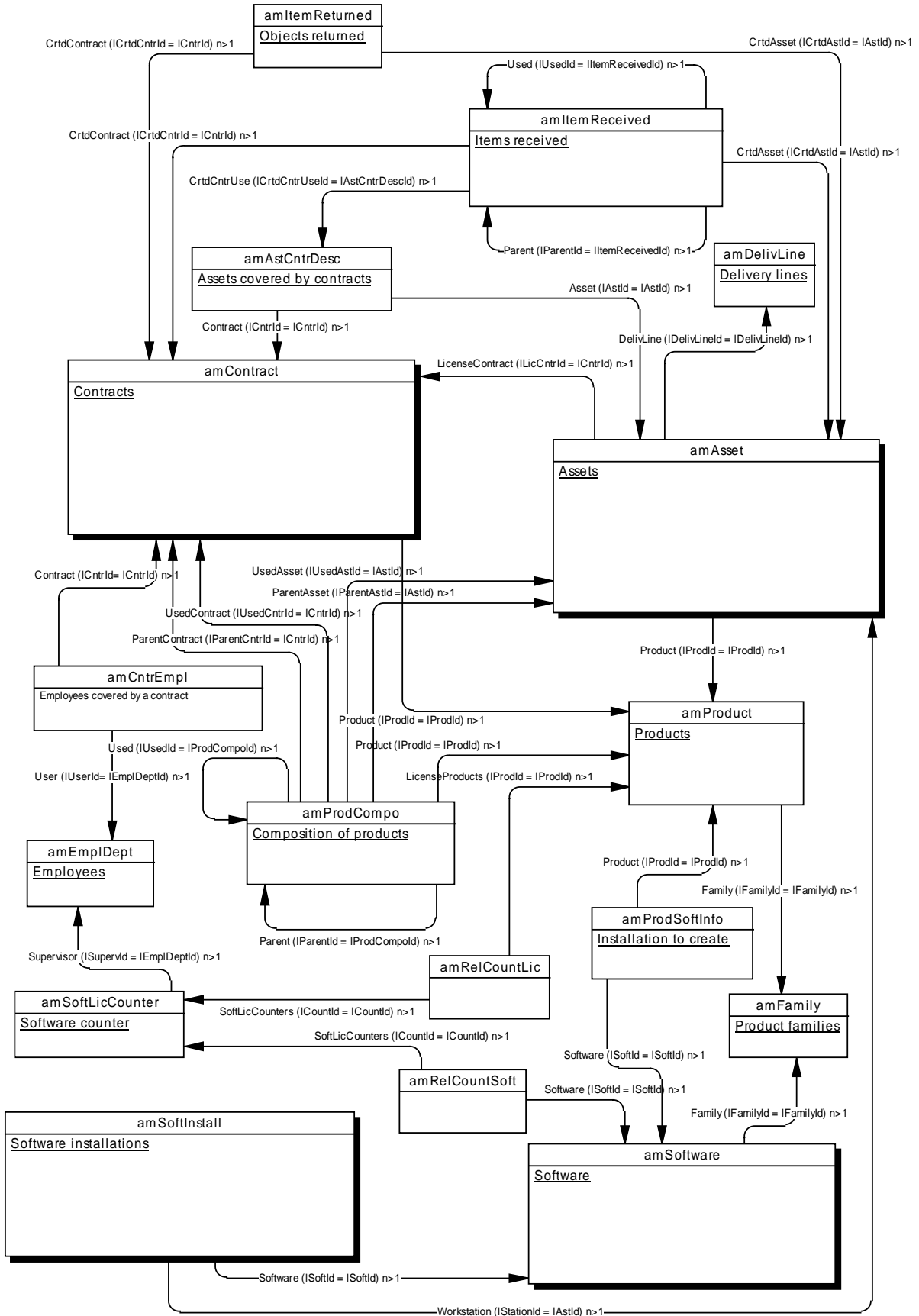
<b>6. Reference tables</b>	<b>21</b>
6.1. Main tables linked to database access	21
6.2. Main tables linked to employees	22
6.3. Main tables linked to locations	23
6.4. Main tables linked to features	24
6.5. Main tables linked to actions	26
6.6. Main tables linked to suppliers	27

# 1. Asset Management

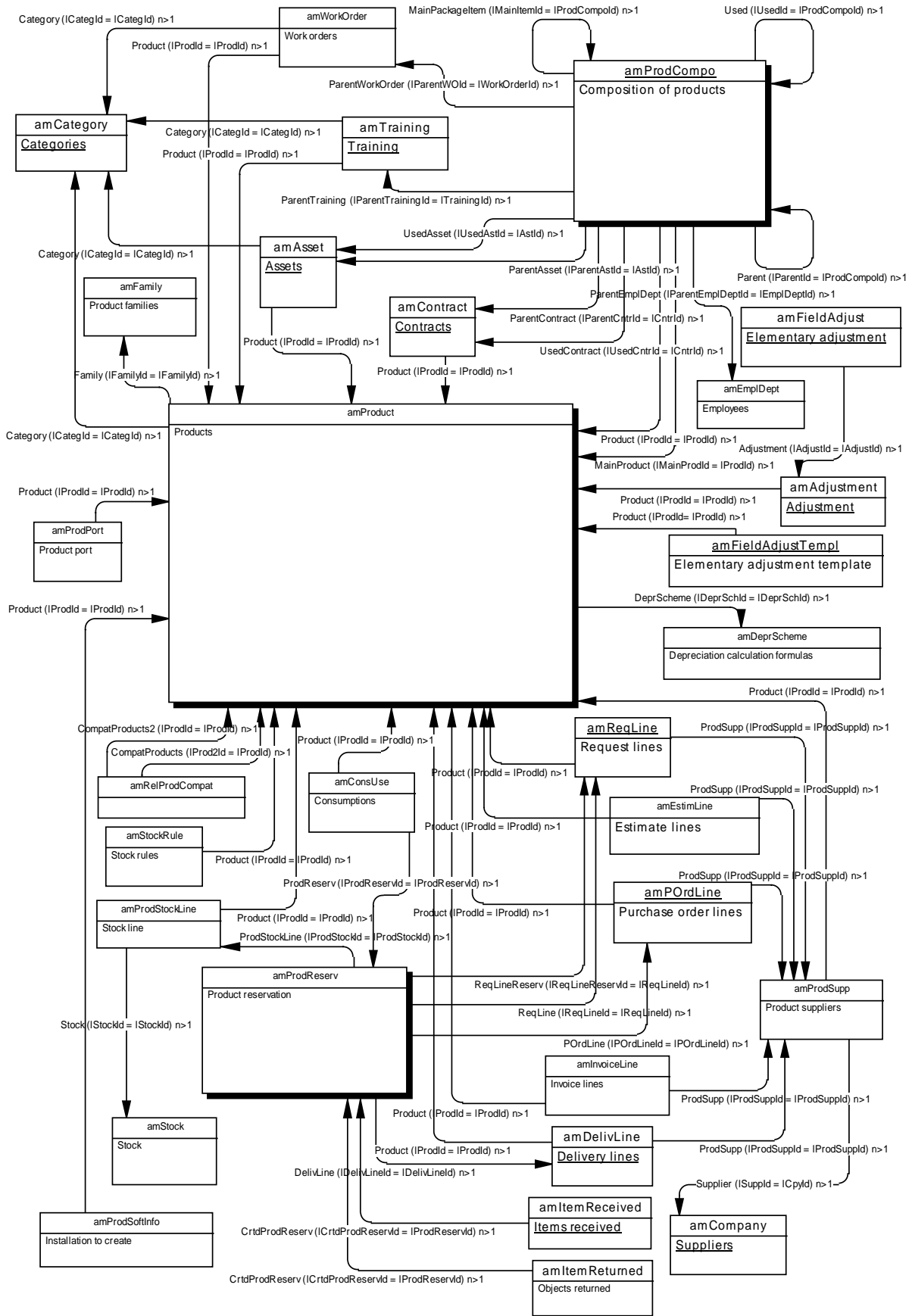
## 1.1. Main tables linked to assets



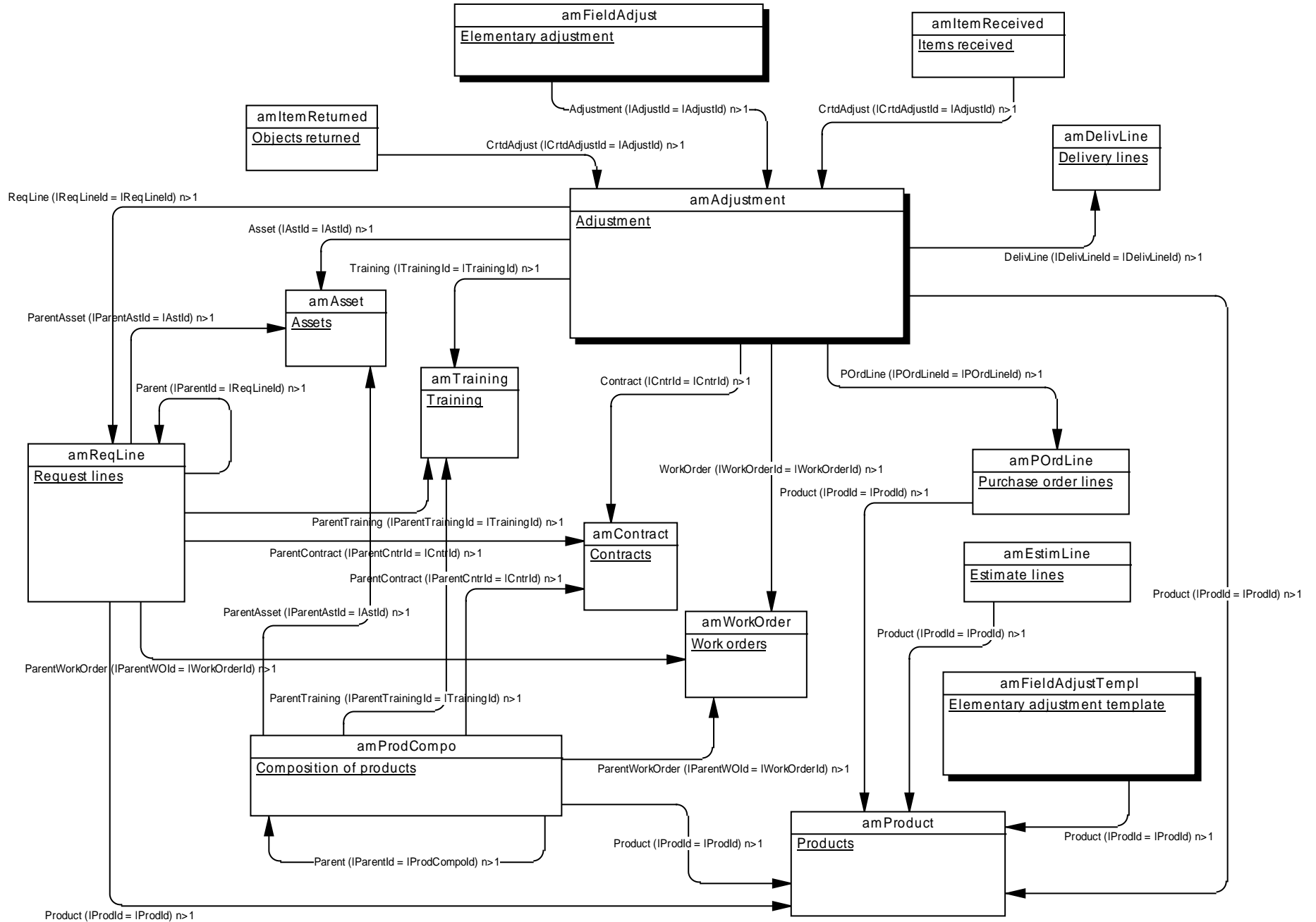
## 1.2. Main tables linked to software installations



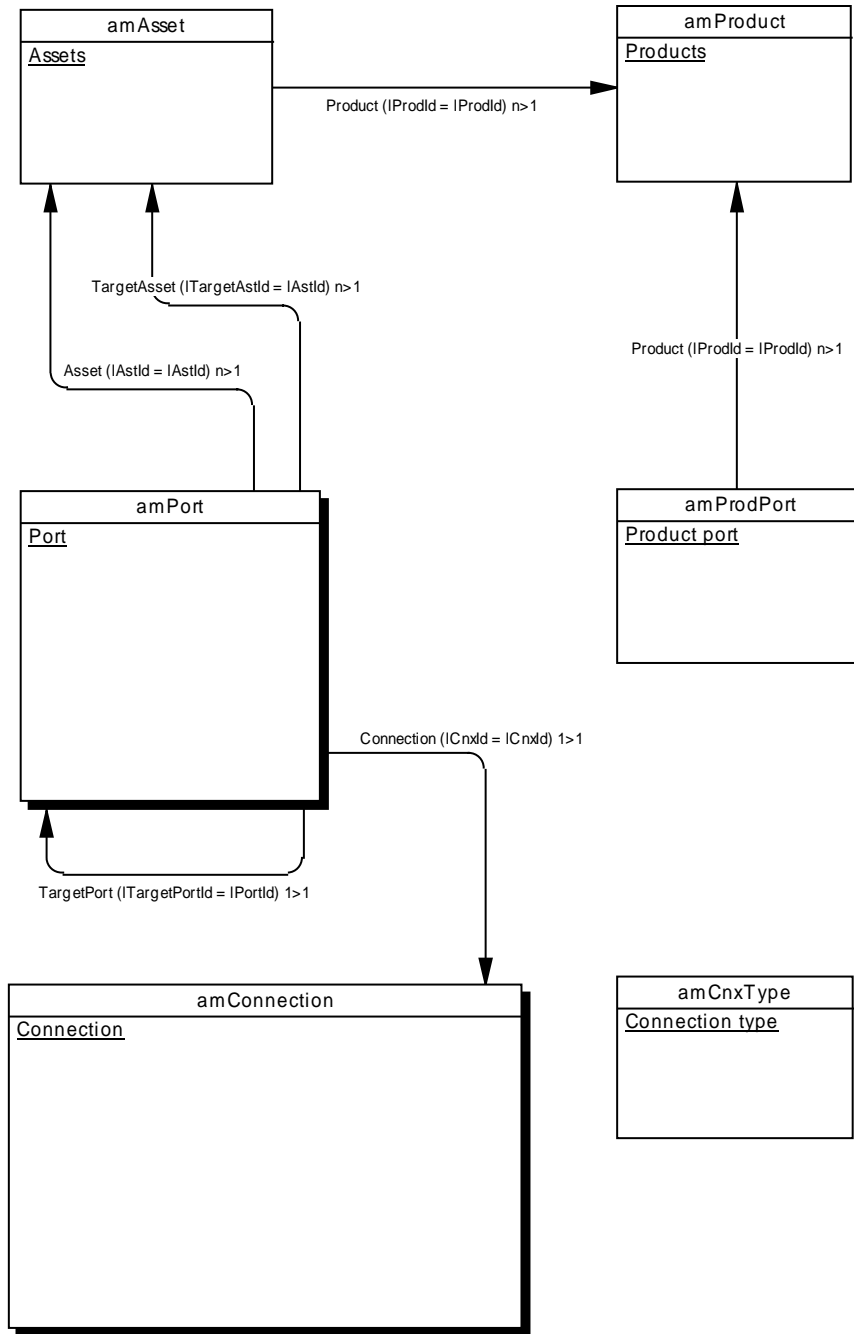
### 1.3. Main tables linked to products



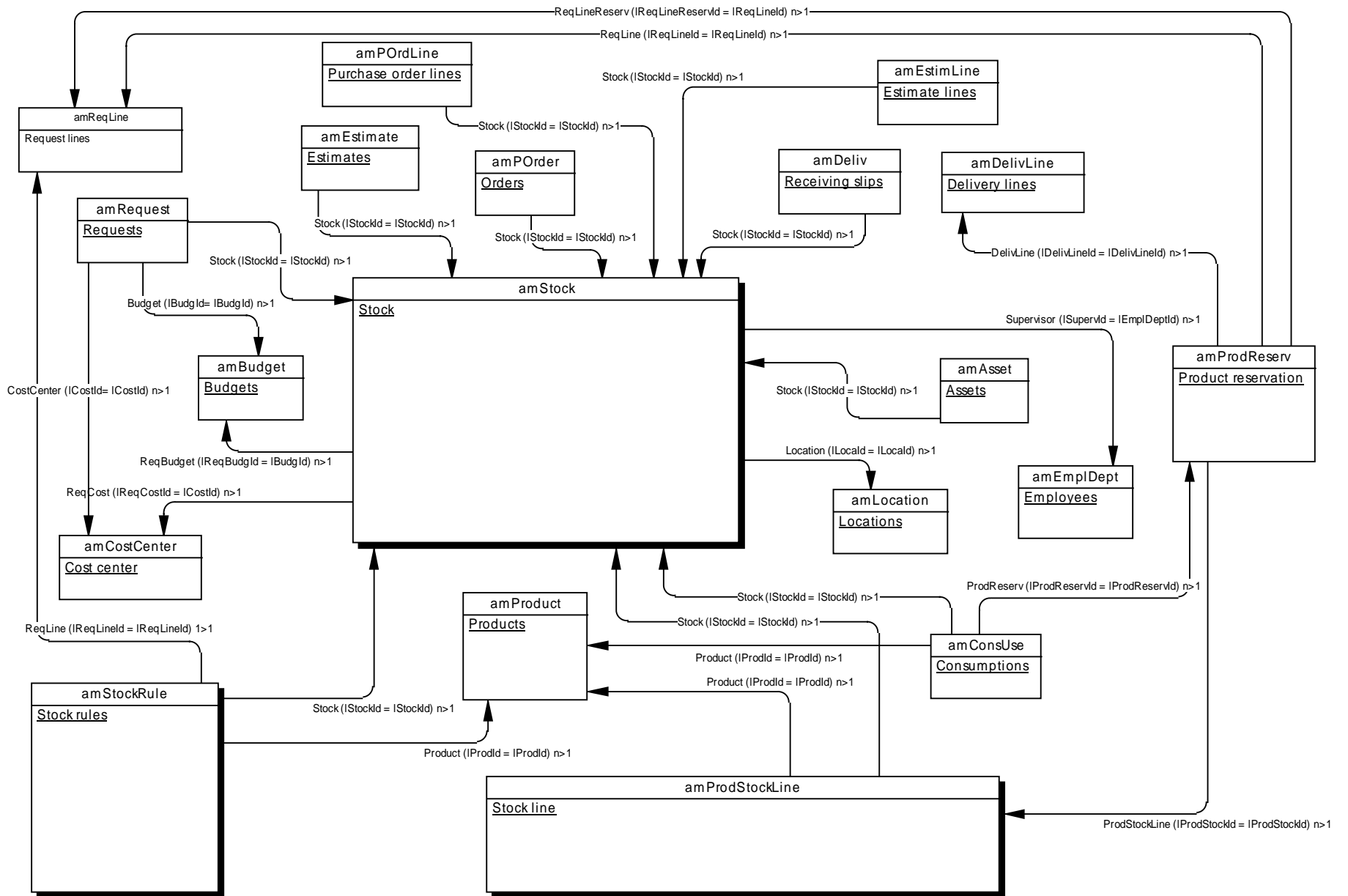
## 1.4. Main tables linked to adjustments



## 1.5. Main tables linked to connections



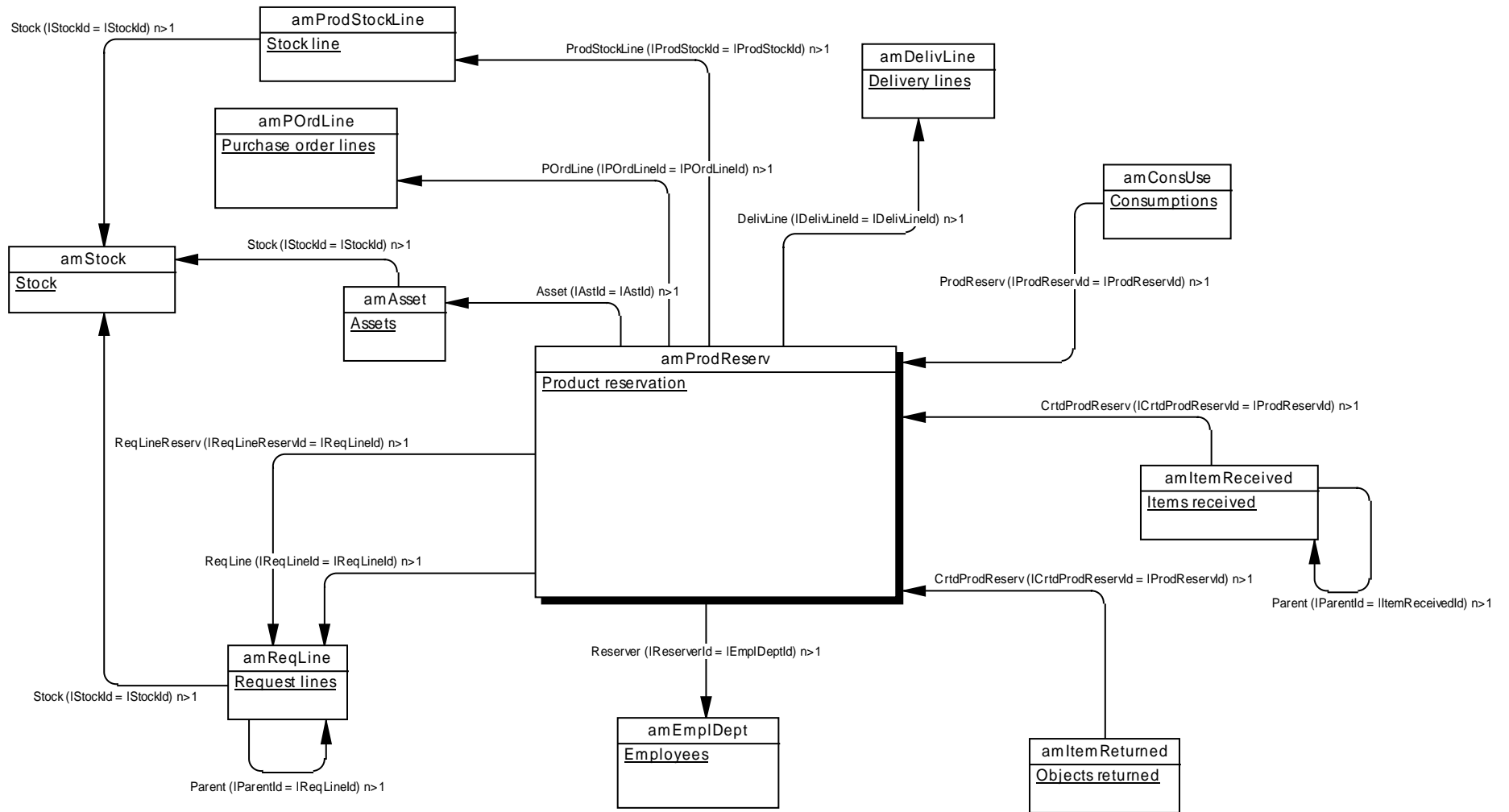
## 1.6. Main tables linked to stocks



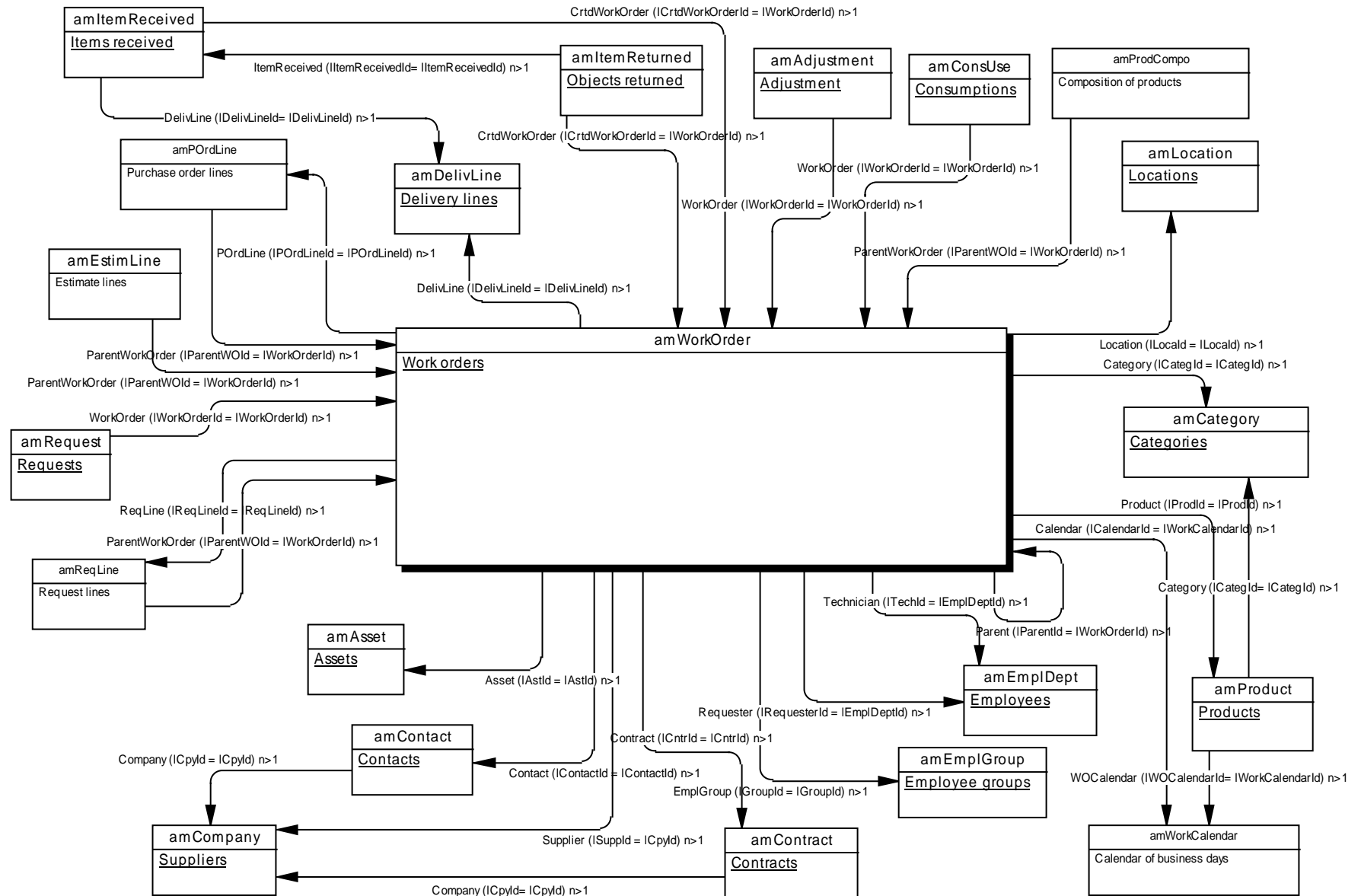




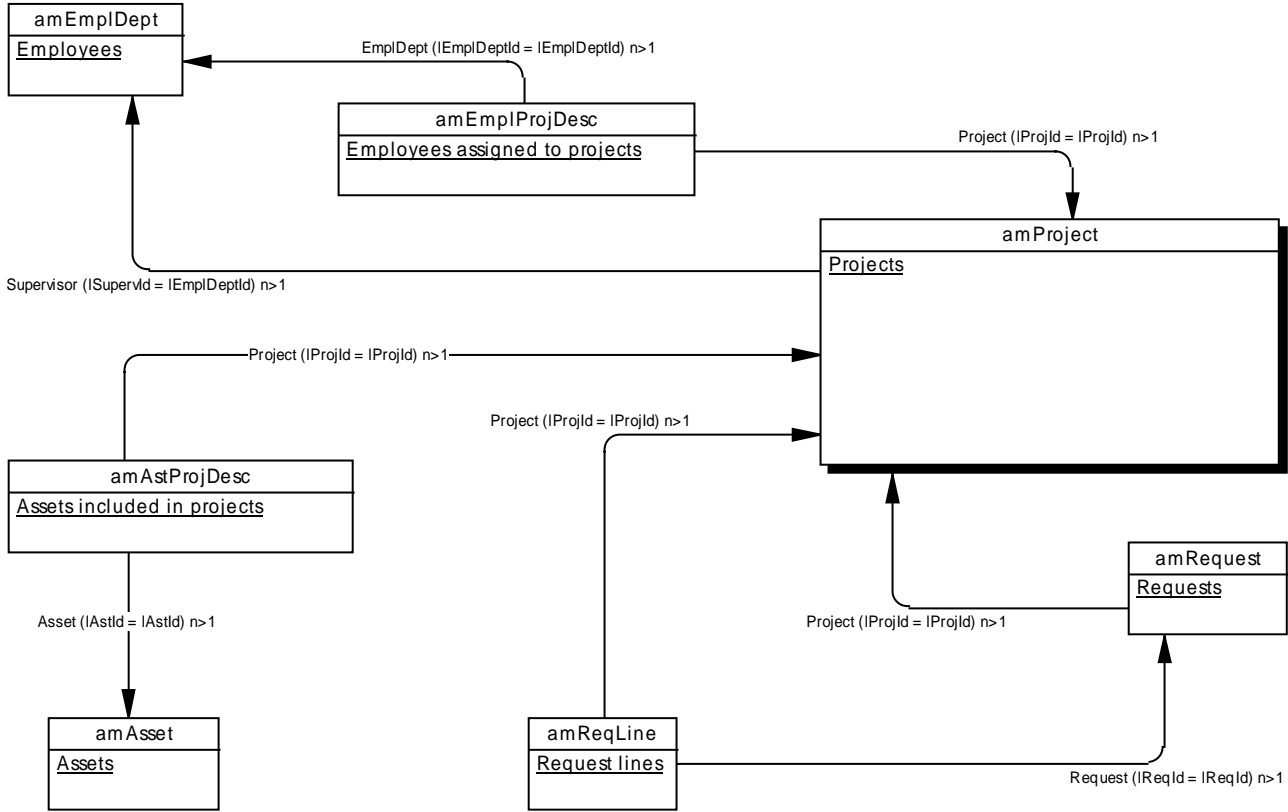
## 1.8. Main tables linked to reservations



## 1.9. Main tables linked to work orders

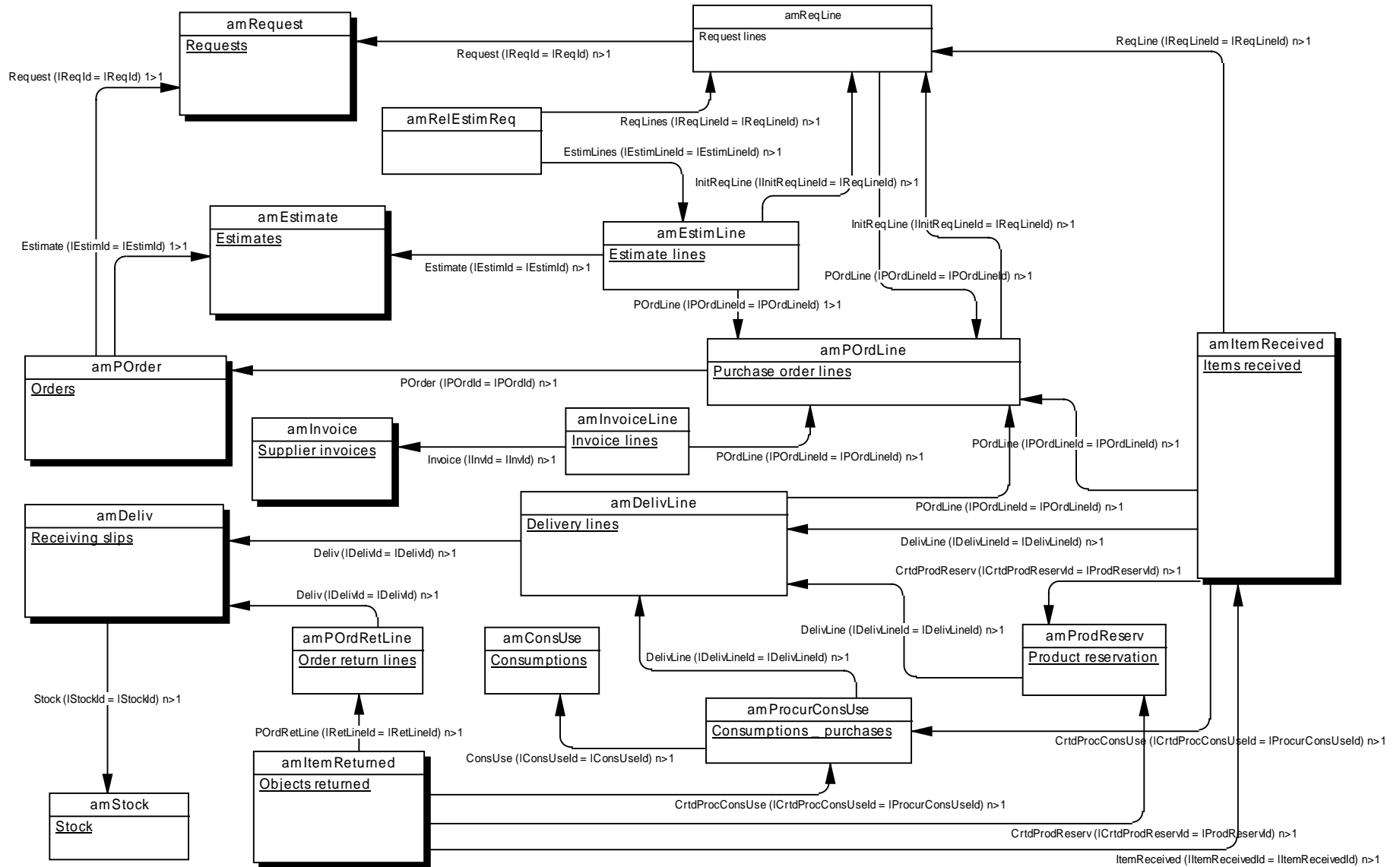


# 1.10. Main tables linked to projects

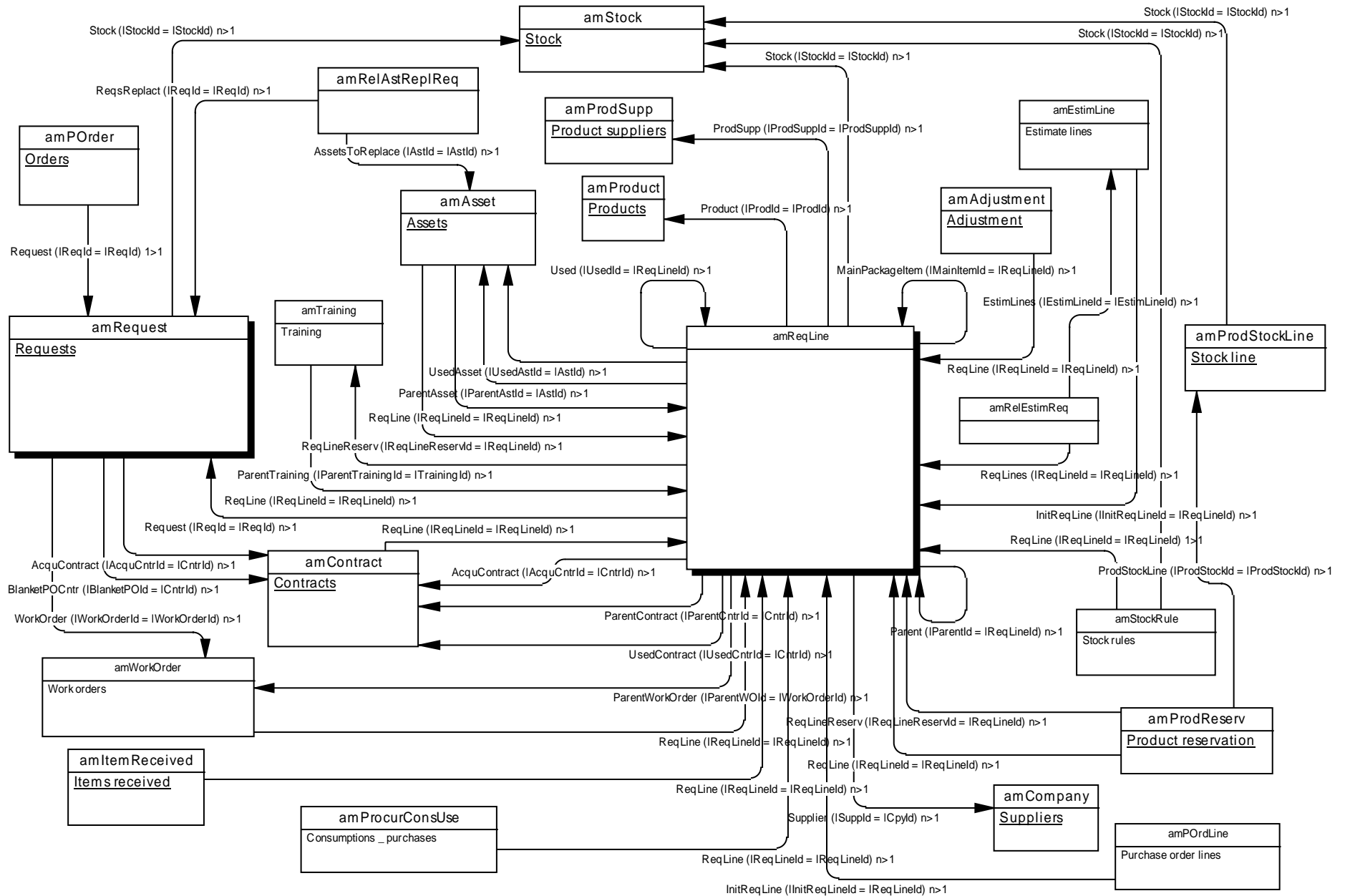


## 2. Procurement Management

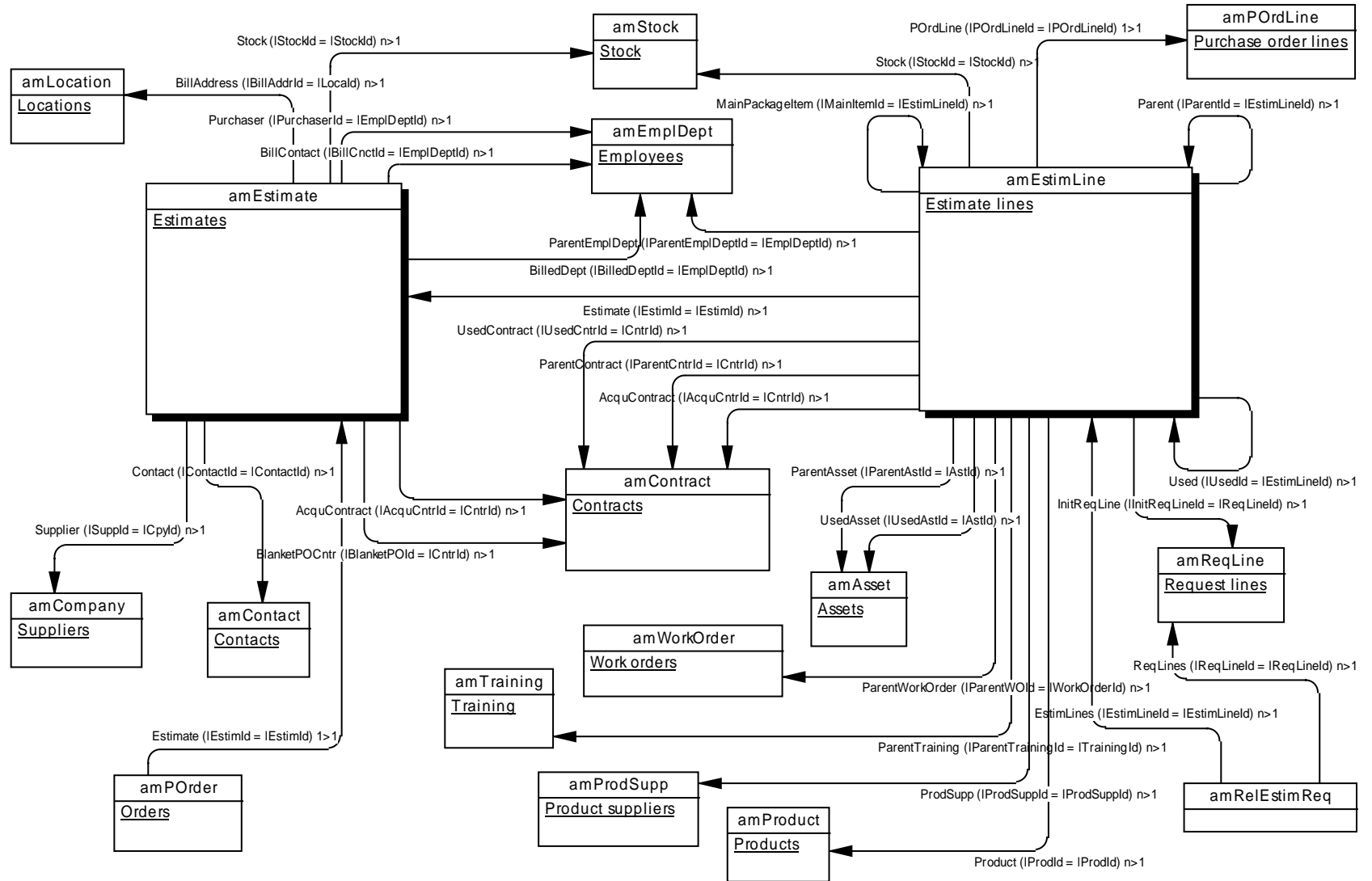
### 2.1. Main tables linked to procurement



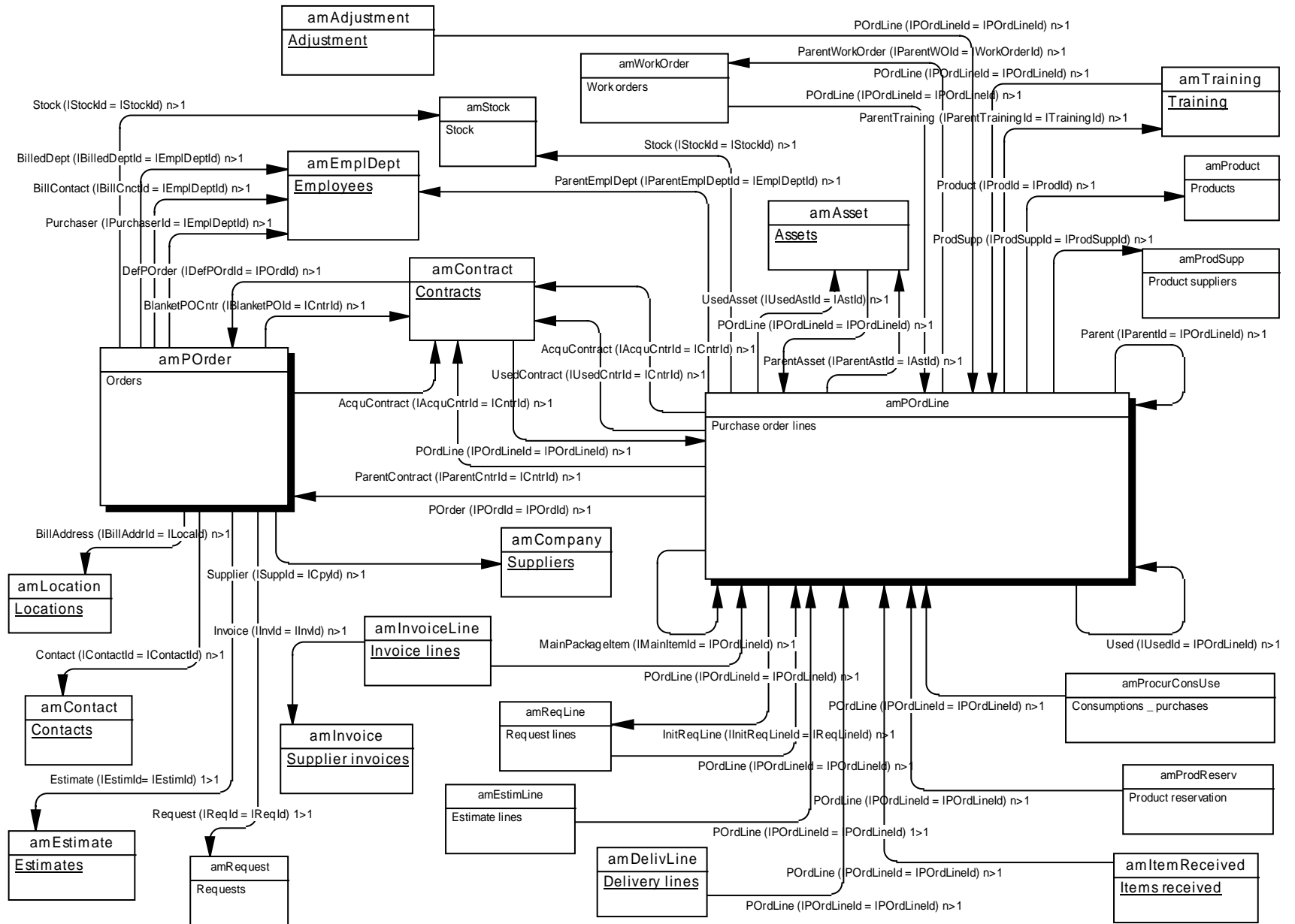
## 2.2. Main tables linked to requests



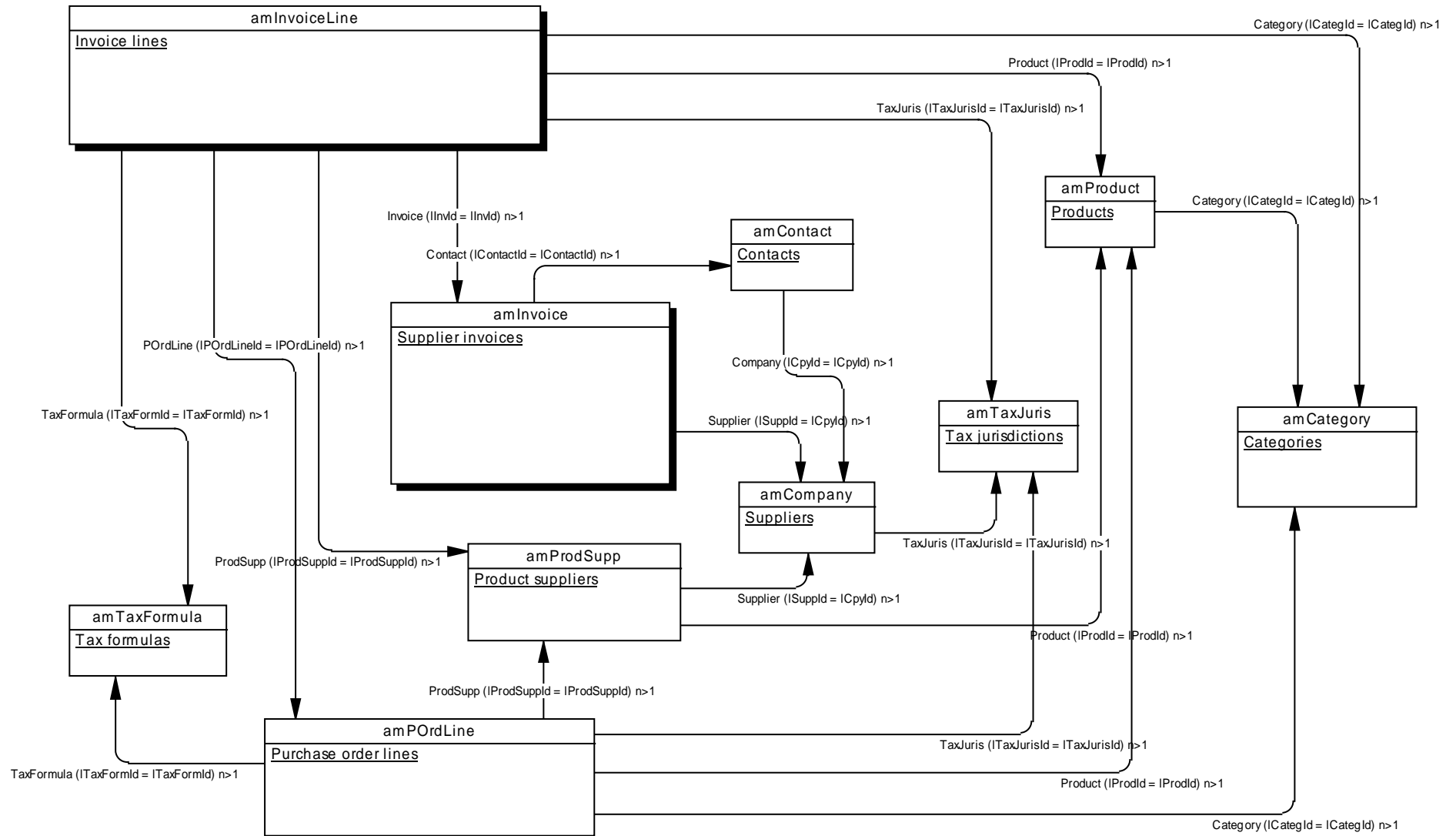
## 2.3. Main tables linked to estimates



## 2.4. Main tables linked to purchase orders

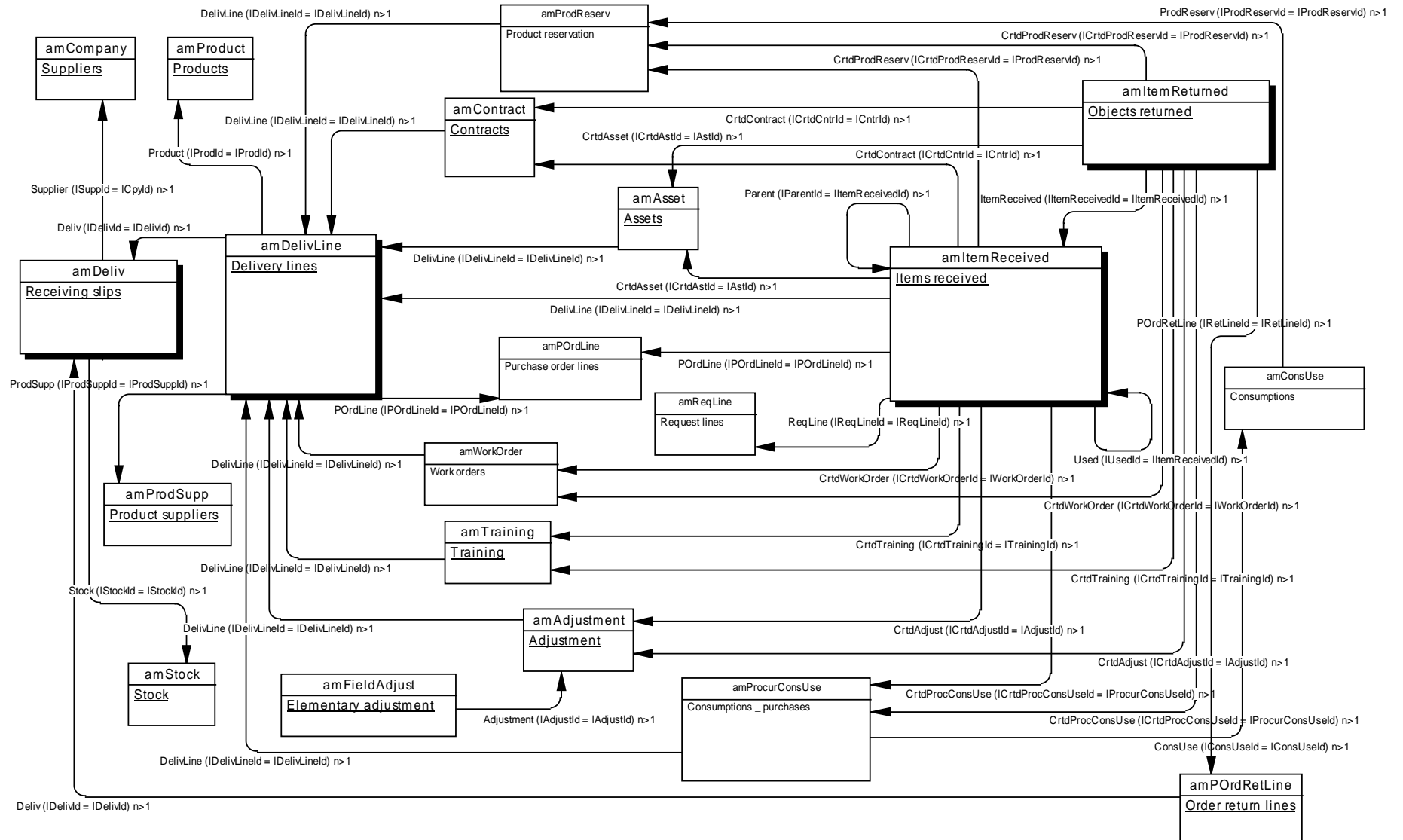


## 2.5. Main tables linked to invoices

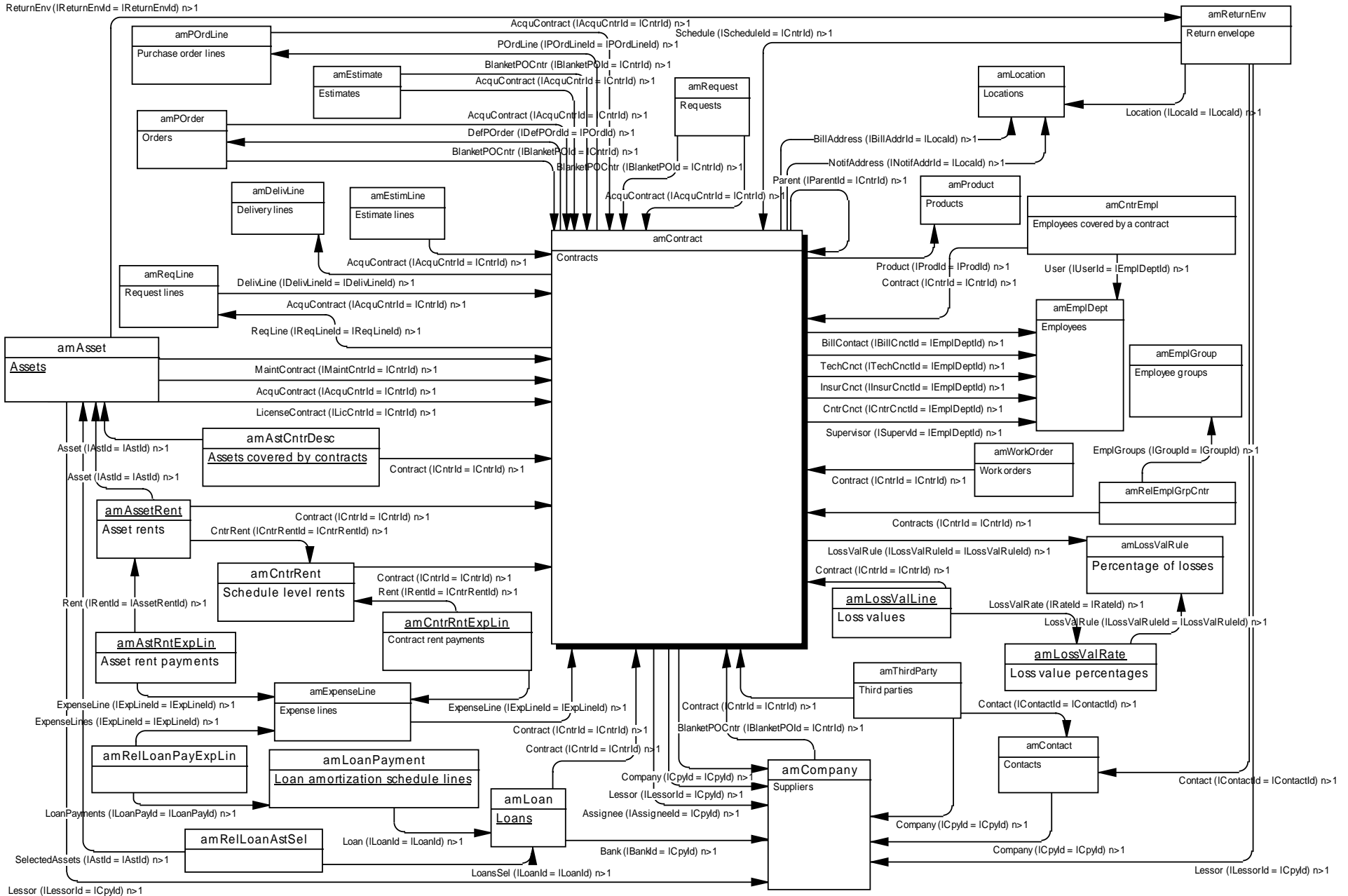




## 2.6. Main tables linked to deliveries

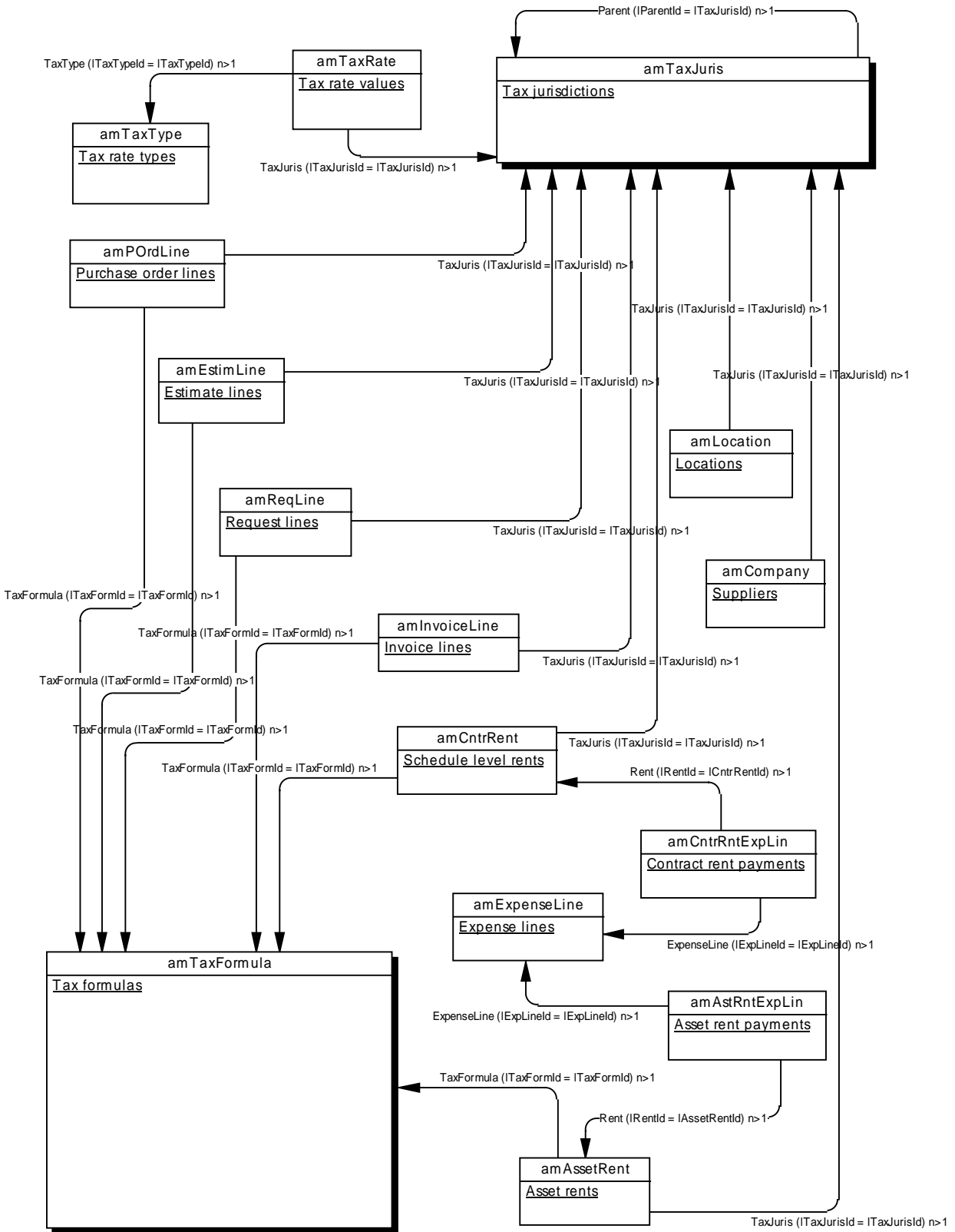


# 3. Contracts and Leasing Management





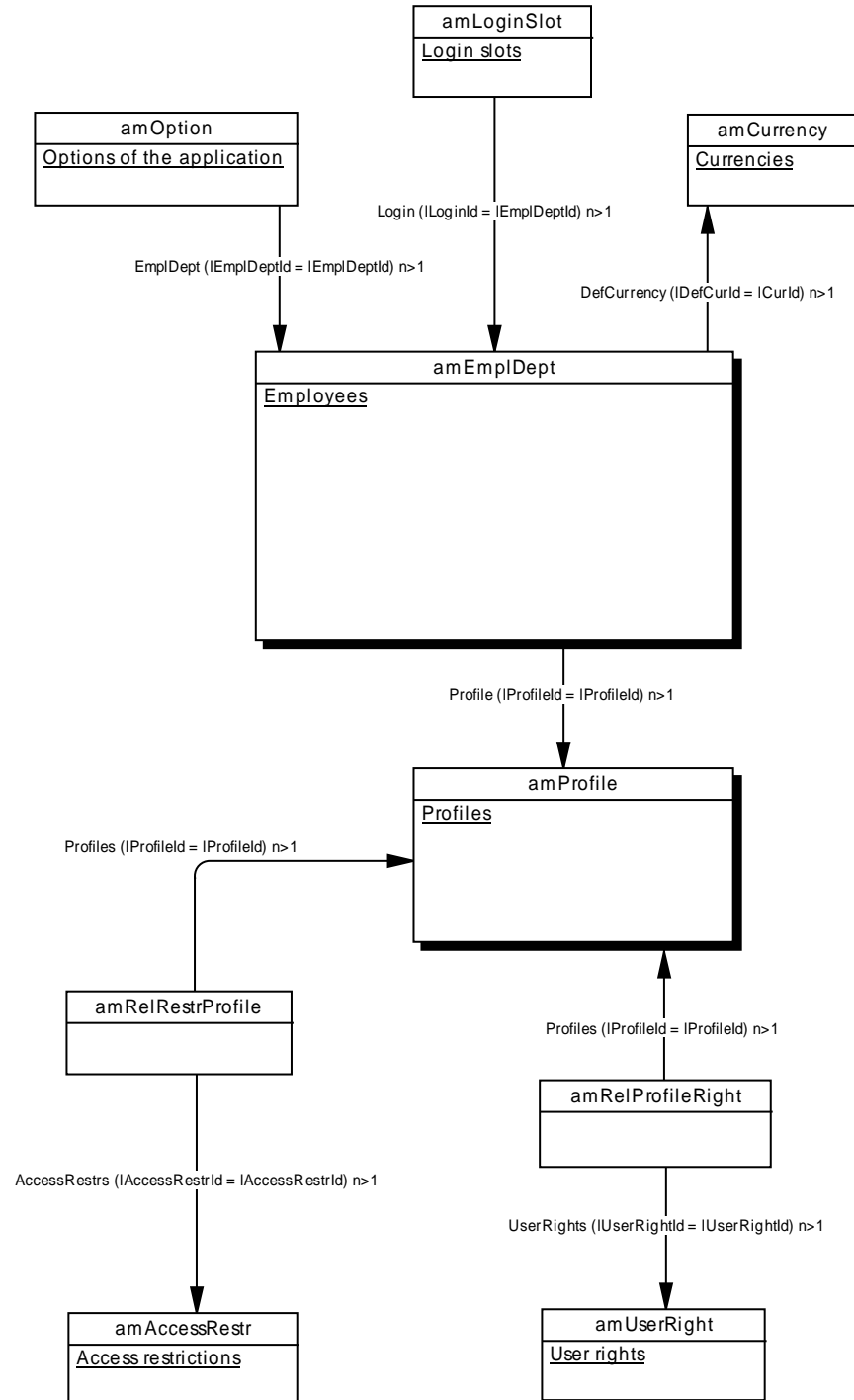
## 4.2. Main tables linked to taxes



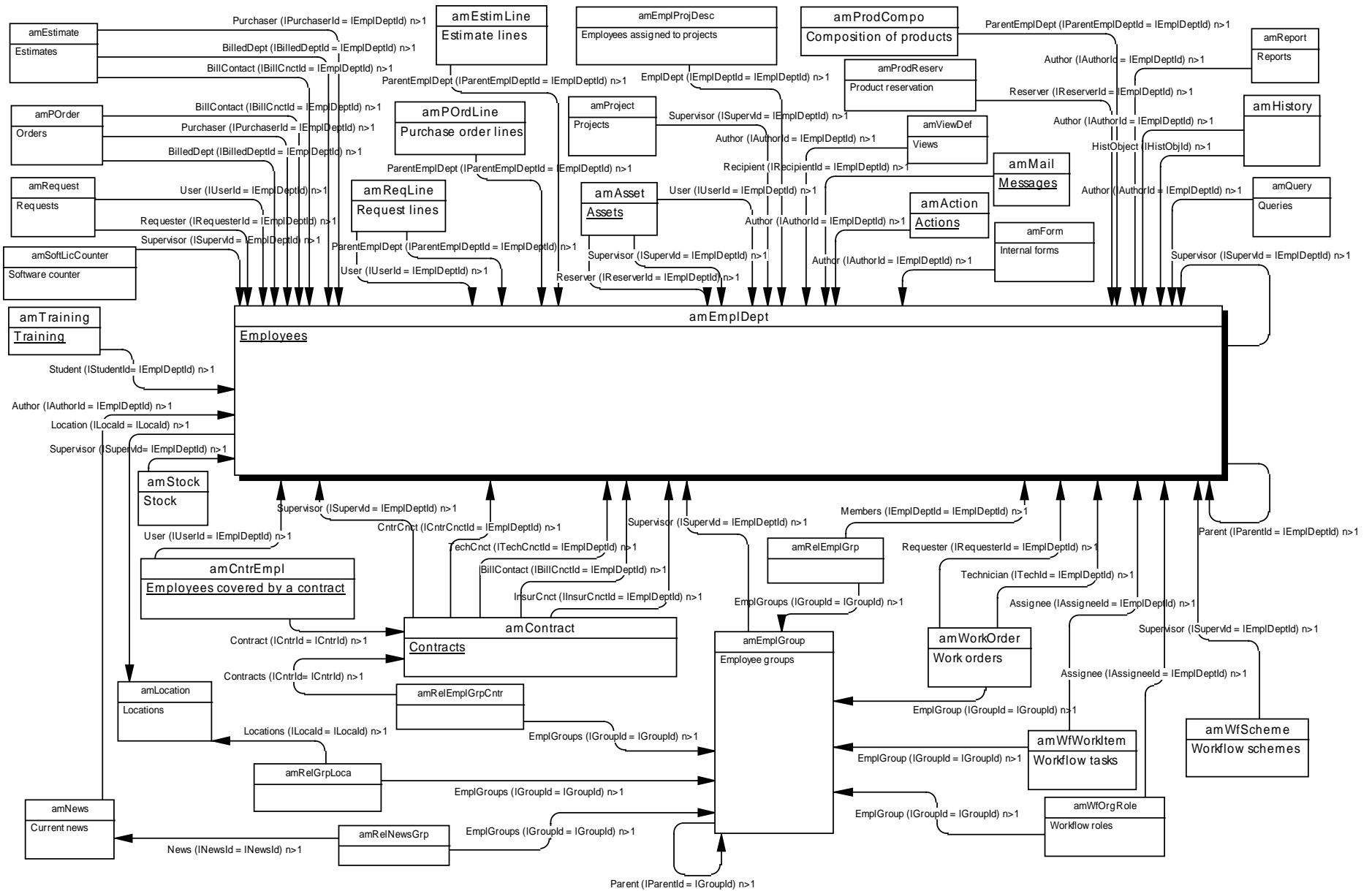


## 6. Reference tables

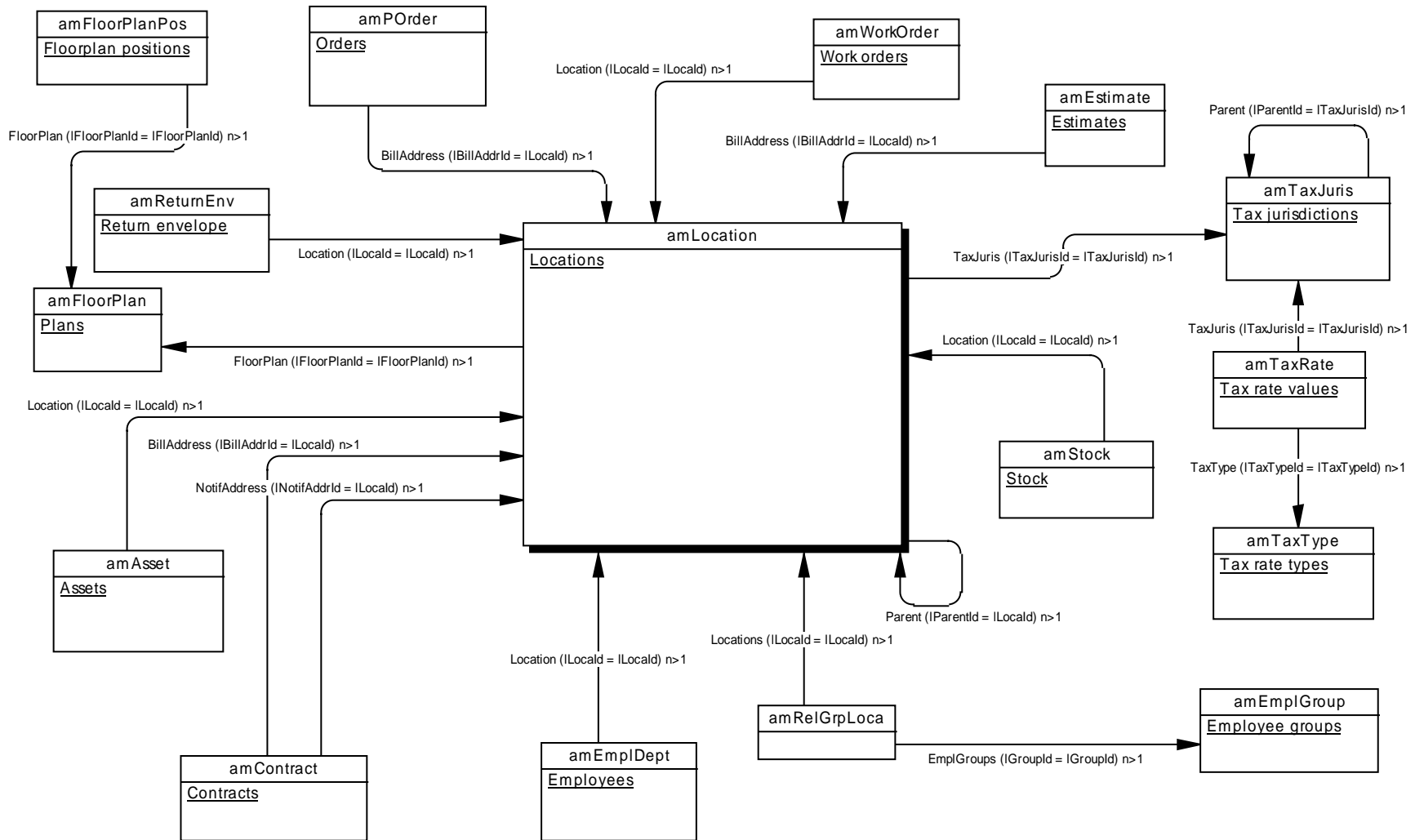
### 6.1. Main tables linked to database access



## 6.2. Main tables linked to employees



### 6.3. Main tables linked to locations





## 6.4. Main tables linked to features

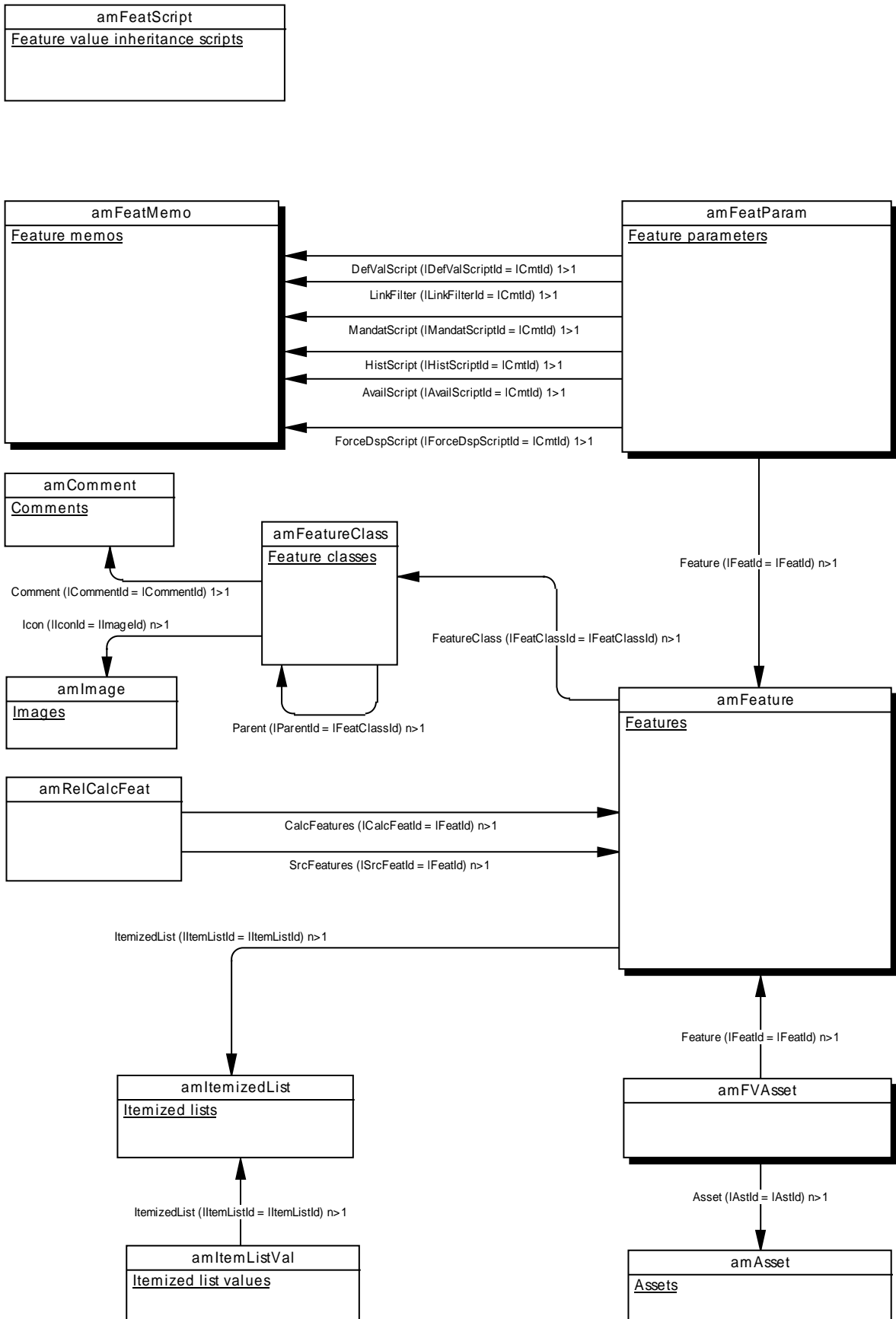
Features can be linked to the majority of tables in AssetCenter.

Here is the list of all the tables that can be linked to features:

amAction, amAsset, amAssetRent, amAstCntrDesc, amAstProjDesc, amBudget, amCategory, amCntrEmpl, amCntrRent, amCompany, amConnection, amConsUse, amContact, amContract, amCostCenter, amCurRate, amCurrency, amDecisionTree, amDeliv, amDelivLine, amDeprScheme, amDocument, amDowntimePeriod, amEmplDept, amEmplGroup, amEmplProjDesc, amEscalScheme, amEscSchLevel, amEstimate, amEstimLine, amExpenseLine, amFixedAsset, amFloorPlan, amInvoice, amInvoiceLine, amItemReceived, amKnowlBase, amLoan, amLoanPayment, amLocation, amLossValLine, amPOrder, amPOrdLine, amPOrdRetLine, amPort, amProblemClass, amProcurConsUse, amProdPort, amProdReserv, amProdStockLine, amProdSupp, amProduct, amProject, amQuery, amReport, amReqLine, amRequest, amReturnEnv, amSeverity, amSoftInstall, amSoftLicCounter, amSoftware, amStock, amStockRule, amTaxJuris, amTaxRate, amTaxType, amThirdParty, amTicket, amTicketHistLine, amTraining, amWfActivity, amWfEvent, amWfOrgRole, amWfScheme, amWfSysActiv, amWfTransition, amWorkCalendar, amWorkOrder.

For each of these tables, there is a table containing the feature values: amFVAction, amFVAsset, amFVAssetRent, etc.

Since features function in the same way for all the tables listed above, we have only shown the links between the main tables related to features, the asset table, and the asset feature table.



## 6.5. Main tables linked to actions

