

Technical white paper

Operations Bridge Reporter BO Server Migration



For the Windows® and Linux Operating Systems

Table of contents

Chapter 1: Migrate SAP BusinessObjects Server	3
---	---

Legal Notices

Warranty

The only warranties for Seattle SpinCo, Inc and its subsidiaries ("Seattle") products and services are set forth in the express warranty statements accompanying such products and services. Nothing herein should be construed as constituting an additional warranty. Seattle shall not be liable for technical or editorial errors or omissions contained herein.

The information contained herein is subject to change without notice.

Restricted Rights Legend

Confidential computer software. Valid license from Seattle required for possession, use or copying. Consistent with FAR 12.211 and 12.212, Commercial Computer Software, Computer Software Documentation, and Technical Data for Commercial Items are licensed to the U.S. Government under vendor's standard commercial license.

Copyright Notice

© 2015 - 2018 Micro Focus or one of its affiliates

Trademark Notices

Adobe® is a trademark of Adobe Systems Incorporated.

Microsoft® and Windows® are U.S. registered trademarks of Microsoft Corporation.

UNIX® is a registered trademark of The Open Group.

Chapter 1: Migrate SAP BusinessObjects Server

This section helps you to migrate SAP BusinessObjects Server component of OBR to another new system. The migration is supported only for the OBR typical scenario, where all the OBR components are installed on same system.

You can use this document to migrate SAP BusinessObjects Server component of OBR on Linux operating system to another Linux Operating system.

Terminologies used

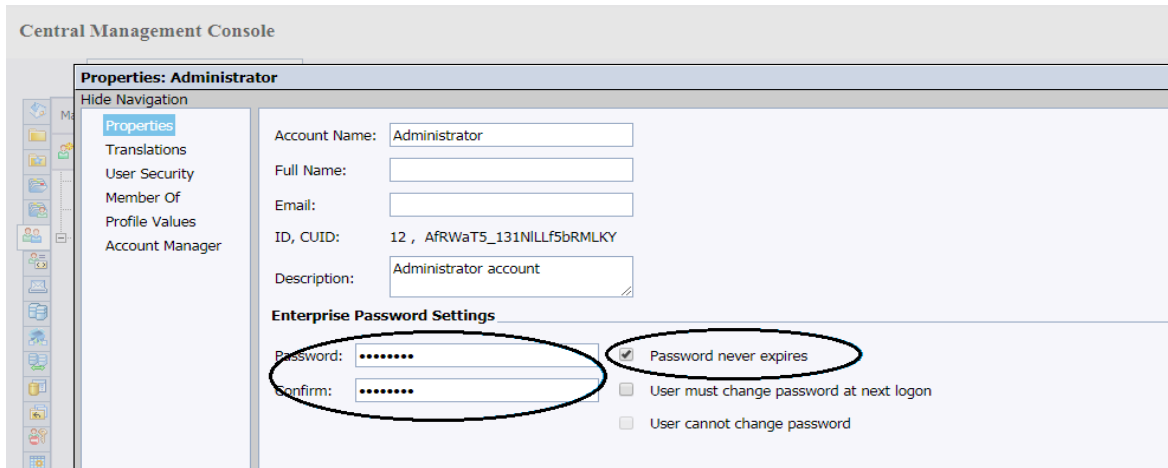
Terminology	Description
SAP BusinessObjects server	SAP BusinessObjects Server component of OBR
SAP BusinessObjects source server	The SAP BusinessObjects server from where the migration is done.
SAP BusinessObjects target server	The SAP BusinessObjects server to which the migration will be done.
{ PMDB_HOME }	%PMDb_HOME% - For Windows \$PMDb_HOME - For Linux

Pre-requisites

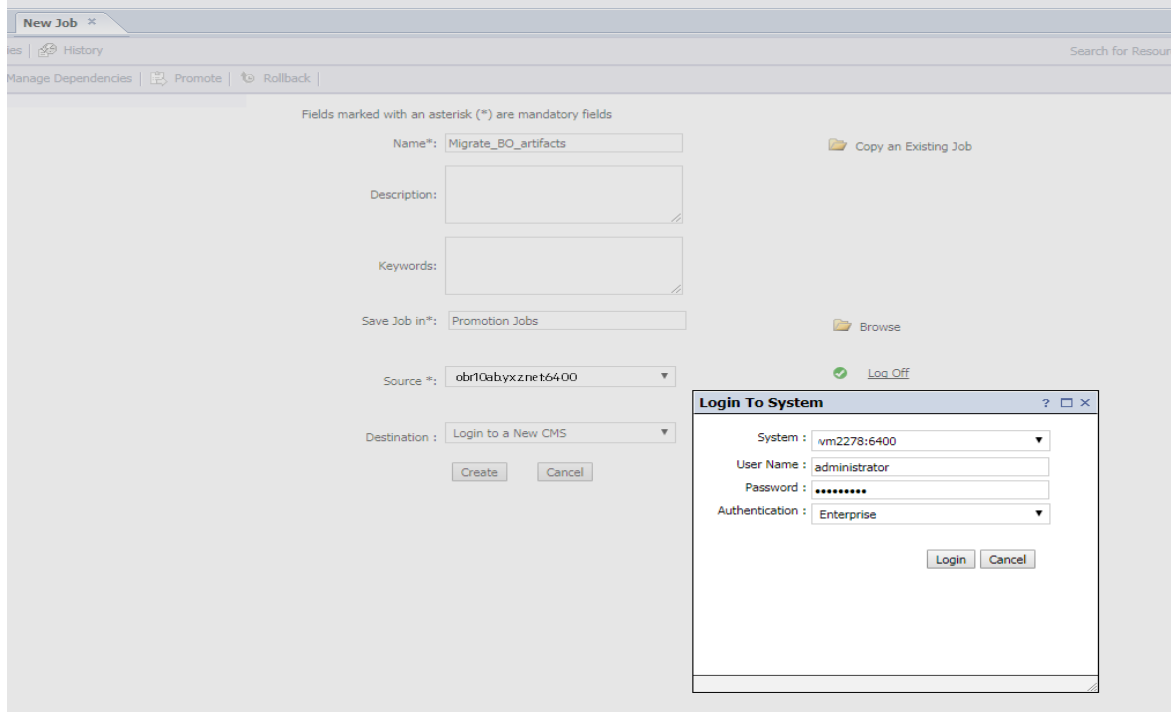
- Make sure that the source and the target servers are on the same latest OBR version.
- On a new system, install SAP BusinessObjects component. For more information, see *Operations Bridge Reporter Interactive Installation Assistance*. This system will be used as the SAP BusinessObjects target server for SAP BusinessObjects server migration.

Migration Steps

1. Log on to SAP BusinessObjects CMC as administrator from the URL: `https://<target-BO-hostname>:8443/BOE/CMC`
2. From drop-down select **Users and Groups**.
3. Click Manage > Properties. The Properties of the administrator user is displayed. Perform the following:
 - a. Edit administrator user and change the password as same as the source SAP BusinessObjects server.
 - b. Click the check box **Password never expire**. Click **Save & close**.



4. From the drop-down, click **Promotion Management**.
5. Click **New Job**, perform these steps:
 - a. In **Name** field, type an appropriate name.
 - b. In the source field, select **Login to a New CMS** and type the details of the source SAP BusinessObjects server, and click **Login**.
 - c. In the destination field, select **Login to a New CMS** and type the details of the target SAP BusinessObjects server, and click **Login**.
 - d. Click **Create**. The page **Add Objects from the system:** appears.



6. In **All Folders**, select **Operations Bridge Reporter** and any other folders you would like to migrate. Click **Add**.

Perform the same step for Universes and Connections.

Optional: If you have created users/groups in the source SAP BusinessObjects server, select specific Users and User Groups.

Add Objects from the system: obr10 6:400

Properties Find Title

- All Folders
- Auditing
- Data Federation
- LCM
- Operations Bridge Reporter
- Platform Search Scheduling
- Probes
- Report Conversion Tool
- SiteScope
- System Configuration Wizard
- Visual Difference
- Web Intelligence Samples
- Personal Categories
- Inboxes
- Favorite Folders
- Categories
- Projects
- Universes
- Connections
- QeeWS
- Events
- Calendars
- Access Levels
- Users
- User Groups
- User Group Hierarchy
- BusinessViews
- Server Groups
- Profiles
- Remote Connections
- Replication Lists
- Applications

Name	Type	Created By	Modified on
Auditing	Folder	System Account	12-Jun-2017 20:37
Data Federation	Folder	System Account	12-Jun-2017 20:47
LCM	Folder	System Account	12-Jun-2017 20:47
Operations Bridge Reporter	Folder	Administrator	13-Jul-2017 11:42
Platform Search Scheduling	Folder	System Account	12-Jun-2017 20:47
Probes	Folder	System Account	12-Jun-2017 20:47
Report Conversion Tool	Folder	Administrator	28-Jul-2010 11:38
SiteScope	Folder	Administrator	18-Sep-2017 19:46
System Configuration Wizard	Folder	System Account	12-Jun-2017 20:37
Visual Difference	Folder	System Account	12-Jun-2017 20:47
Web Intelligence Samples	Folder	Administrator	21-Dec-2010 15:35

Add Add & Close Close

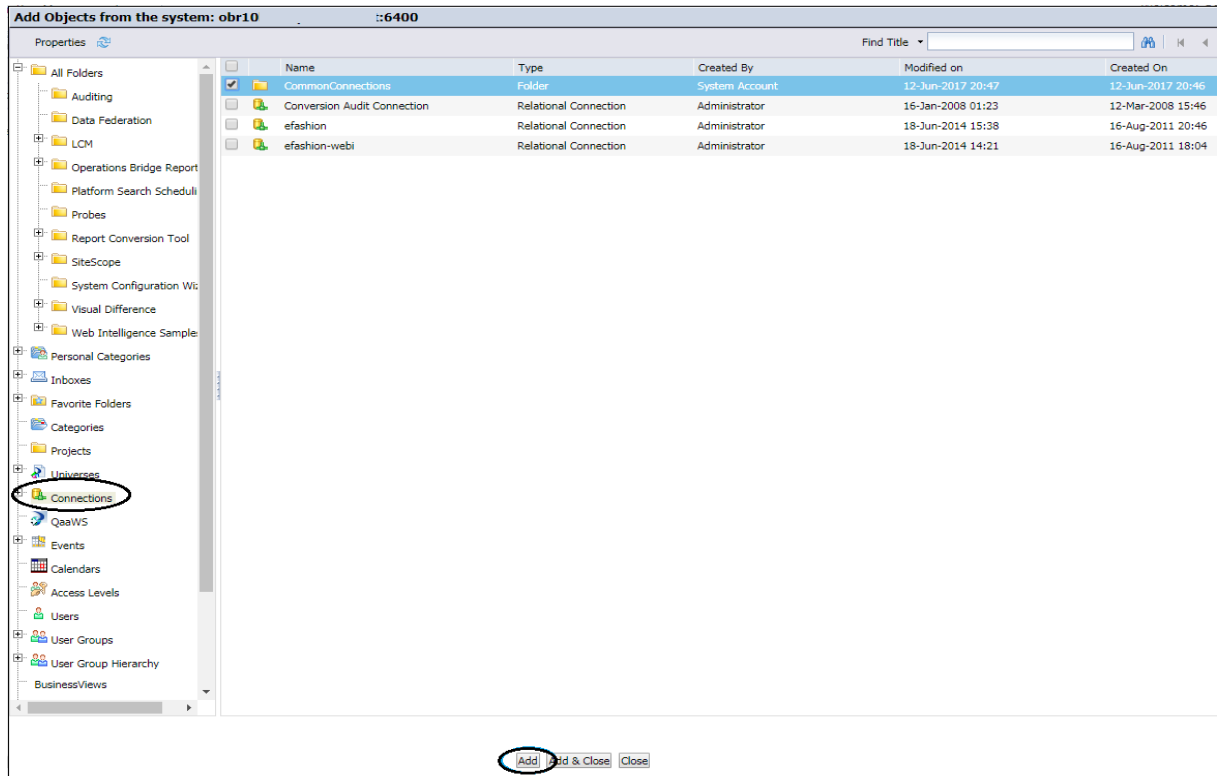
Add Objects from the system: obr101 6:400

Properties Find Title

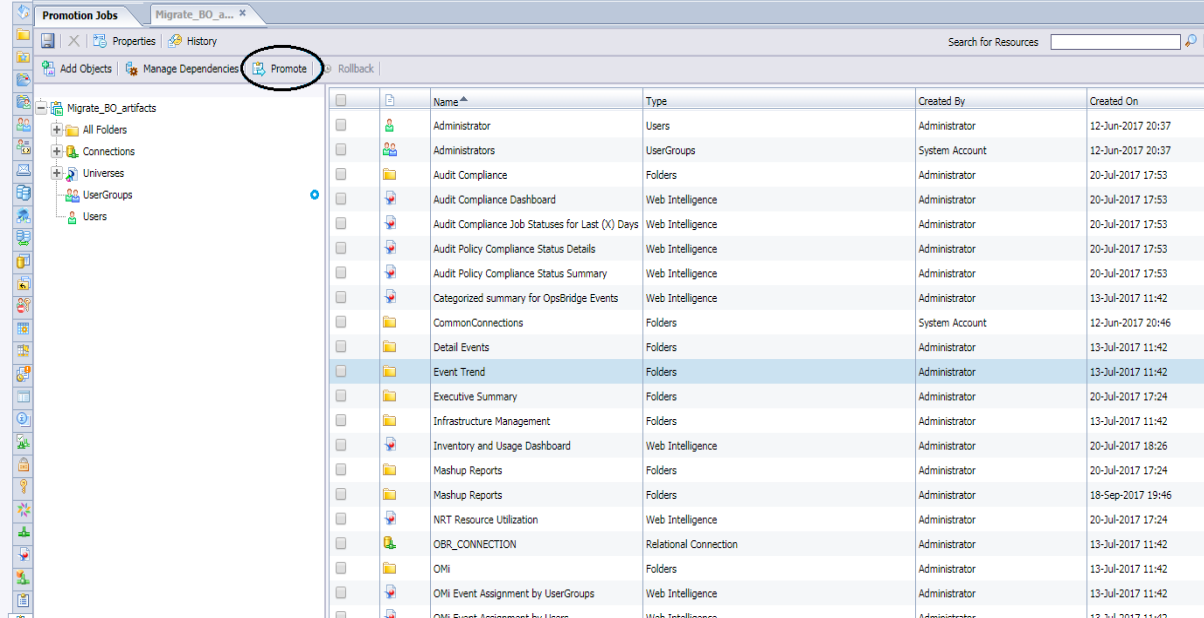
- All Folders
- Auditing
- Data Federation
- LCM
- Operations Bridge Report
- Platform Search Scheduling
- Probes
- Report Conversion Tool
- SiteScope
- System Configuration Wizard
- Visual Difference
- Web Intelligence Sample
- Personal Categories
- Inboxes
- Favorite Folders
- Categories
- Projects
- Universes
- Connections
- QeeWS
- Events
- Calendars
- Access Levels
- Users
- User Groups
- User Group Hierarchy
- BusinessViews

Name	Type	Created By	Modified on	Created On
OHU	Folder	Administrator	13-Jul-2017 11:42	13-Jul-2017 11:42
Report Conversion Tool Universes	Folder	Administrator	28-Jul-2010 11:38	12-Mar-2008 15:34
SiteScope	Folder	Administrator	18-Sep-2017 19:46	18-Sep-2017 19:46
SystemManagement	Folder	Administrator	20-Jul-2017 17:24	20-Jul-2017 17:24
webi universes	Folder	Administrator	16-Aug-2011 20:46	16-Aug-2011 20:46
eFashion	Universe	Administrator	18-Jun-2014 14:33	16-Aug-2011 20:46
SA Audit Compliance Universe.unx	Universe (information design tool)	Administrator	18-Aug-2017 14:21	20-Jul-2017 17:53
SA Patch Compliance Universe.unx	Universe (information design tool)	Administrator	18-Aug-2017 14:21	20-Jul-2017 18:55
SA Server Inventory and Usage Universe.unx	Universe (information design tool)	Administrator	18-Aug-2017 14:20	20-Jul-2017 18:26
SA Software Compliance Universe.unx	Universe (information design tool)	Administrator	18-Aug-2017 14:20	20-Jul-2017 19:04
SA User Management Universe.unx	Universe (information design tool)	Administrator	18-Aug-2017 14:20	20-Jul-2017 19:12

Add Add & Close Close



7. Click **Close** once the addition of migration artifacts is completed.
8. Click **Promote** The summary page appears, showing all your selections.

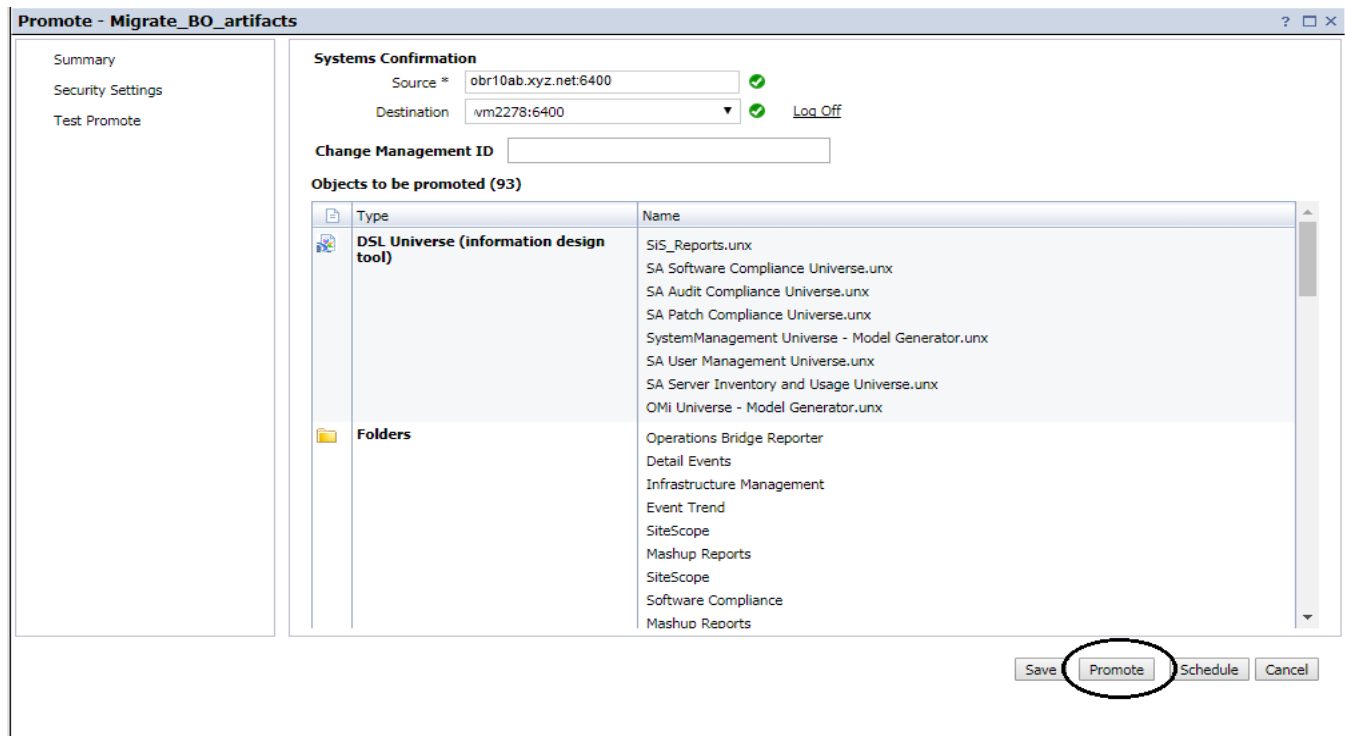


The screenshot shows the 'Promotion Jobs' interface in the Central Management Console. The 'Promote' button is circled in red. The main area displays a table of promotion jobs with columns for Name, Type, Created By, and Created On.

Name	Type	Created By	Created On
Administrator	Users	Administrator	12-Jun-2017 20:37
Administrators	UserGroups	System Account	12-Jun-2017 20:37
Audit Compliance	Folders	Administrator	20-Jul-2017 17:53
Audit Compliance Dashboard	Web Intelligence	Administrator	20-Jul-2017 17:53
Audit Compliance Job Statuses for Last (X) Days	Web Intelligence	Administrator	20-Jul-2017 17:53
Audit Policy Compliance Status Details	Web Intelligence	Administrator	20-Jul-2017 17:53
Audit Policy Compliance Status Summary	Web Intelligence	Administrator	20-Jul-2017 17:53
Categorized summary for OpsBridge Events	Web Intelligence	Administrator	13-Jul-2017 11:42
CommonConnections	Folders	System Account	12-Jun-2017 20:46
Detail Events	Folders	Administrator	13-Jul-2017 11:42
Event Trend	Folders	Administrator	13-Jul-2017 11:42
Executive Summary	Folders	Administrator	20-Jul-2017 17:24
Infrastructure Management	Folders	Administrator	13-Jul-2017 11:42
Inventory and Usage Dashboard	Web Intelligence	Administrator	20-Jul-2017 18:26
Mashup Reports	Folders	Administrator	20-Jul-2017 17:24
Mashup Reports	Folders	Administrator	18-Sep-2017 19:46
NRT Resource Utilization	Web Intelligence	Administrator	20-Jul-2017 17:24
OBR_CONNECTION	Relational Connection	Administrator	13-Jul-2017 11:42
OMI	Folders	Administrator	13-Jul-2017 11:42
OMI Event Assignment by UserGroups	Web Intelligence	Administrator	13-Jul-2017 11:42
OMI Event Assignment by User	Web Intelligence	Administrator	13-Jul-2017 11:42

9. Verify the selections and perform any one of the following step:

- Click **Promote** OR
- Click **Schedule** to run later at some specific time OR
- Click **Save** and promote later.



Once the job is run, the status of the job complete appears.

10. After the successful job, log on to the target SAP BusinessObjects server BI launch pad from the URL: <https://<new-BO-hostname>:8443/BOE/BI>. Verify the reports to ensure the migration.

Post-migration Configuration

Follow these steps on the OBR server:

1. Stop the administration service by following these steps:

On Windows:

- a. From the `services.msc` window, right-click **HPE_PMDB_Platform_Administrator**.
- b. Click **Stop**.

On Linux:

- a. Go to `/etc/init.d` directory
- b. Run the following commands on the appropriate operating systems:

On RHEL 6.x/SLES 11.x: `service HPE_PMDB_Platform_Administrator stop`

On RHEL 7.x/SLES 12.x/OEL: `systemctl stop HPE_PMDB_Platform_Administrator.service`

2. Go to `{PMDB_HOME}/data` and take a backup of the `config.prp` file to some other location.

3. Edit the following parameter in the {PMDB_HOME}/data/config.prp file:

- a. isRemoteBO to true
- b. bo.cms=<target SAP BusinessObjects server hostname>

4. Start the administration service by following these steps:

On Windows:

- a. From the services.msc window, right-click **HPE_PMDB_Platform_Administrator**.
- b. Click **Start**.

On Linux:

- a. Go to /etc/init.d directory
- b. Run the following commands on the appropriate operating systems:

On RHEL 6.x/SLES 11.x: service HPE_PMDB_Platform_Administrator start

On RHEL 7.x/SLES 12.x/OEL: systemctl start HPE_PMDB_Platform_Administrator.service

Validate Migration

1. Log on to OBR Administration Console.
2. Go to **Additional Configurations > Reporting Platform**.
3. Click **Launch CMC**, the target SAP BusinessObjects server CMC should be launched to confirm a successful migration.