



Application Performance Management

Software Version: 9.50

What's New

Document Release Date: May 2018

Software Release Date: May 2018

Legal notices

Warranty

The only warranties for products and services of Micro Focus and its affiliates and licensors ("Micro Focus") are set forth in the express warranty statements accompanying such products and services. Nothing herein should be construed as constituting an additional warranty. Micro Focus shall not be liable for technical or editorial errors or omissions contained herein. The information contained herein is subject to change without notice.

Restricted rights legend

Confidential computer software. Except as specifically indicated otherwise, a valid license from Micro Focus is required for possession, use or copying. Consistent with FAR 12.211 and 12.212, Commercial Computer Software, Computer Software Documentation, and Technical Data for Commercial Items are licensed to the U.S. Government under vendor's standard commercial license.

Copyright notice

© Copyright 2005 - 2018 Micro Focus or one of its affiliates

Trademark notices

Adobe® and Acrobat® are trademarks of Adobe Systems Incorporated.

AMD, the AMD Arrow symbol and ATI are trademarks of Advanced Micro Devices, Inc.

Citrix® and XenDesktop® are registered trademarks of Citrix Systems, Inc. and/or one more of its subsidiaries, and may be registered in the United States Patent and Trademark Office and in other countries.

Google™ and Google Maps™ are trademarks of Google Inc.

Intel®, Itanium®, Pentium®, and Intel® Xeon® are trademarks of Intel Corporation in the U.S. and other countries.

iPad® and iPhone® are trademarks of Apple Inc.

Java is a registered trademark of Oracle and/or its affiliates.

Linux® is the registered trademark of Linus Torvalds in the U.S. and other countries.

Microsoft®, Windows®, Lync®, Windows NT®, Windows® XP, Windows Vista® and Windows Server® are either registered trademarks or trademarks of Microsoft Corporation in the United States and/or other countries.

NVIDIA® is a trademark and/or registered trademark of NVIDIA Corporation in the U.S. and other countries.

Oracle is a registered trademark of Oracle Corporation and/or its affiliates.

Red Hat® is a registered trademark of Red Hat, Inc. in the United States and other countries.

SAP® is the trademark or registered trademark of SAP SE in Germany and in several other countries.

UNIX® is a registered trademark of The Open Group.

Documentation updates

The title page of this document contains the following identifying information:

- Software Version number, which indicates the software version.
- Document Release Date, which changes each time the document is updated.
- Software Release Date, which indicates the release date of this version of the software.

To verify you are using the most recent edition of a document, go to

[https://softwaresupport.softwaregrp.com/group/softwaresupport/search-result?doctype=manuals?keyword=.](https://softwaresupport.softwaregrp.com/group/softwaresupport/search-result?doctype=manuals?keyword=)

To check for recent software patches, go to

[https://softwaresupport.softwaregrp.com/group/softwaresupport/search-result?doctype=patches?keyword=.](https://softwaresupport.softwaregrp.com/group/softwaresupport/search-result?doctype=patches?keyword=)

This site requires that you register for a Passport and sign in. To register for a Passport ID, go to

<https://cf.passport.softwaregrp.com/hppcf/login.do>.

Or click the **Register** link at the top of the Software Support page.

You will also receive updated or new editions if you subscribe to the appropriate product support service.

Contact your sales representative for details.

The title page of this document contains the following identifying information:

- Software Version number, which indicates the software version.
- Document Release Date, which changes each time the document is updated.
- Software Release Date, which indicates the release date of this version of the software.

To verify you are using the most recent edition of a document, go to

<https://softwaresupport.softwaregrp.com/group/softwaresupport/search-result?doctype=online help>.

This site requires that you register for a Passport and sign in. To register for a Passport ID, go to

<https://cf.passport.softwaregrp.com/hppcf/login.do>.

You will also receive updated or new editions if you subscribe to the appropriate product support service.

Contact your sales representative for details.

For information and details about the products, services, and support that offers, contact your Client Director.

Support

Visit the Software Support Online web site at <https://softwaresupport.softwaregrp.com/>.

This web site provides contact information and details about the products, services, and support that offers.

online support provides customer self-solve capabilities. It provides a fast and efficient way to access interactive technical support tools needed to manage your business. As a valued support customer, you can benefit by using the support web site to:

- Search for knowledge documents of interest
- Submit and track support cases and enhancement requests
- Manage software licenses
- Download new versions of software or software patches
- Access product documentation
- Manage support contracts
- Look up support contacts
- Review information about available services
- Enter into discussions with other software customers
- Research and register for software training

Most of the support areas require you to register as a Passport user and sign in. Many also require a support contract.

To register for a Passport ID, go to <https://cf.passport.softwaregrp.com/hppcf/login.do>.

Visit the Software Support Online web site at <https://softwaresupport.softwaregrp.com/>.

This web site provides contact information and details about the products, services, and support that offers.

online support provides customer self-solve capabilities. It provides a fast and efficient way to access interactive technical support tools needed to manage your business. As a valued support customer, you can benefit by using the support web site to:

- Search for knowledge documents of interest
- Submit and track support cases and enhancement requests
- Manage software licenses
- Download software
- Access product documentation
- Manage support contracts
- Look up support contacts
- Review information about available services
- Enter into discussions with other software customers
- Research and register for software training

Most of the support areas require you to register as a Passport user and sign in. Many also require a support contract.

To register for a Passport ID, go to <https://softwaresupport.softwaregrp.com/>.

To check for recent updates or to verify that you are using the most recent edition of a document, contact your Client Director.

Contents

What's New in APM 9.50	6
APM Platform Enhancements and Shared Services	6
Platform Enhancements	6
Business Process Monitor 9.50	6
Real User Monitor 9.50	7
Diagnostics 9.50	9
SiteScope 2018.05	9
Send documentation feedback	11

What's New in APM 9.50

This document provides information about new features and enhancements to Application Performance Management (APM) 9.50.

APM Platform Enhancements and Shared Services

Platform Enhancements

- Micro Focus rebranding: The user interface and documentation are rebranded to comply with the Micro Focus branding guidelines.
- Win 2016 support (Apache + IIS 10), RHEL 7.4 support.
- MSSQL 2016 DB , Oracle 12c R2 EE
- UCMDB 11.0 adoption
- SLA on event CIs through EMS
- Latest client java 1.8 u161
- Graceful shutdown of PMANAGER to avoid DB table partition metadata corruption
- Supported Browsers
 - Firefox ESR 60 - For Application Health only.
 - Chrome version 66.0.3359.139 (Official Build) (64-bit) - Support only for Application Health.

Business Process Monitor 9.50

BPM Integration with COSO: BPM integrates with Collect Once Store Once (COSO) to store the metrics collected from BPM. You can view the metrics on OBM using BVD graphing. For more information see, the Operations Bridge 2018.05 Premium documentation on <https://docs.microfocus.com/?OpsB>

BPM 9.50 includes the following features and enhancements:

- Micro Focus rebranding: The user interface and documentation are rebranded to comply with the Micro Focus branding guidelines.
- Location based reporting.
- Support for client JRE version 1.8.161

- Support Mobile Center 2.6 including support for mobile devices on AWS device farm and support for Emulators.

NOTE:

MC 2.7 is certified with UFT 14.03 only.

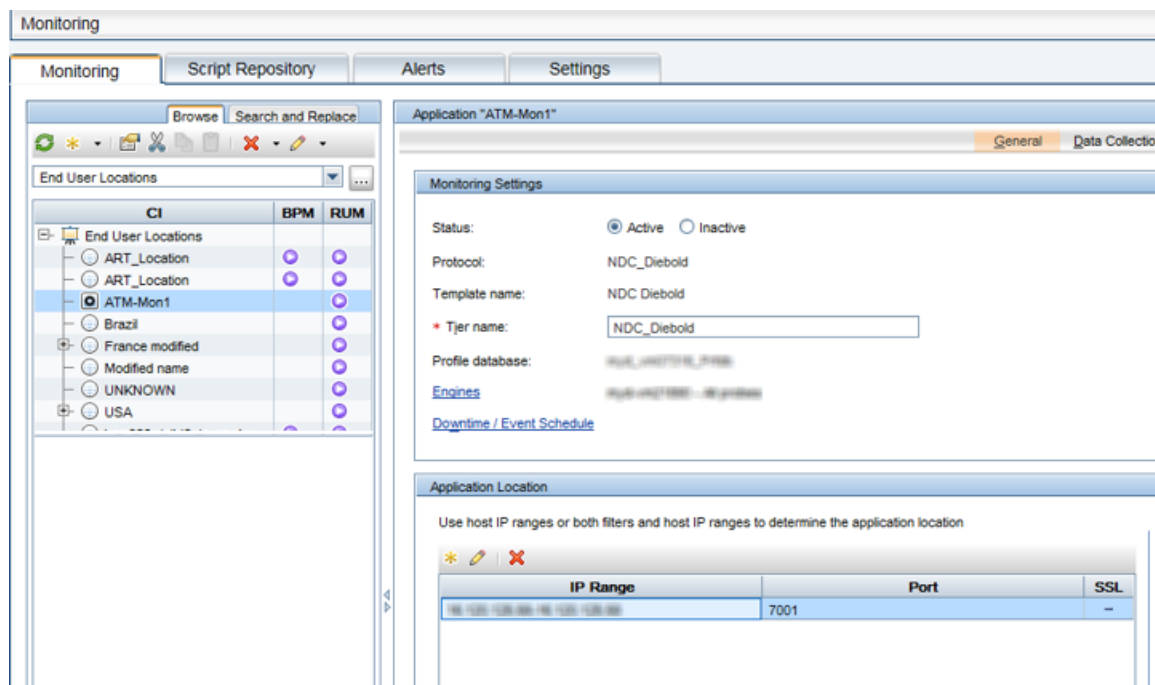
- Support for UFT 14.03
- Added support for the following browsers
 - Firefox ESR 60 for App Health

Real User Monitor 9.50

RUM 9.50 includes the following features and enhancements:

Diebold ATM protocol support:

RUM is now able to monitor Diebold ATM applications. Using RUM, an application owner can monitor and isolate the cause of any performance and availability issue for Diebold applications.

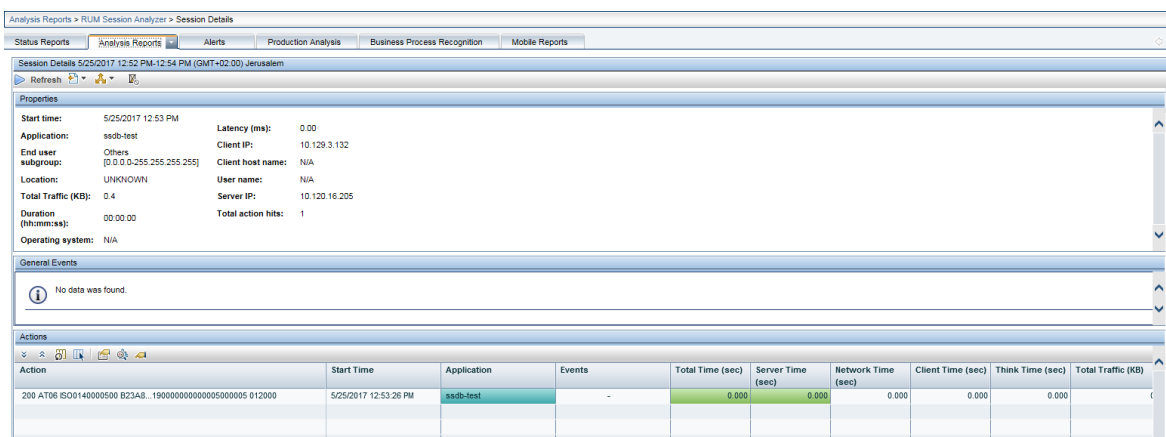


NOTE:

The Diebold ATM parser is in beta mode. The implementation supports parsing the ATM main transactions. Parsing of maintenance messages is not supported.

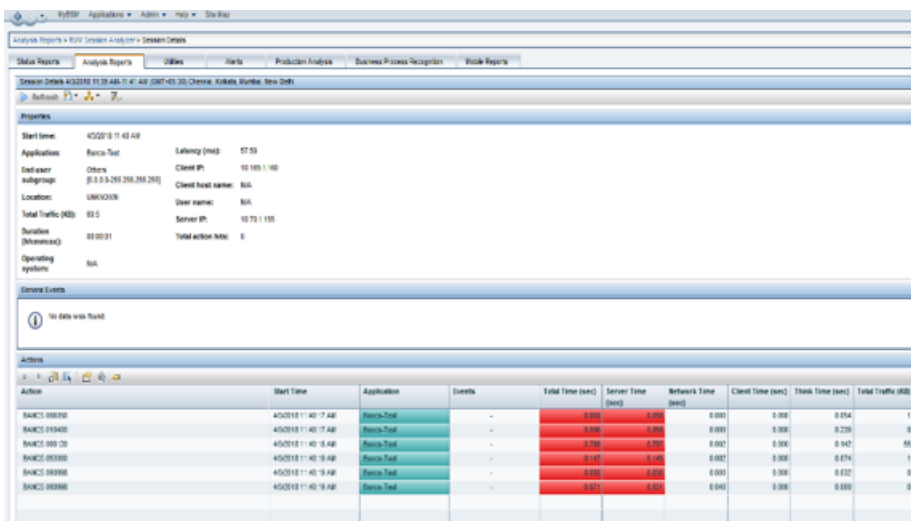
SSDB protocol support:

RUM now supports monitoring for the SSDB protocol. SSDB is widely used by many Internet companies, to benefit from its high performance, key-value NoSQL database capability.



BANCS protocol support:

RUM now supports monitoring for the TCS BANCS protocol, a software solution that provides a breadth of services for core banking solutions. In addition, RUM provides the ability to configure action parameters and customizable events for the BANCS protocol.



RUM Mobile enhancements:

- Monitor **Cordova** mobile apps
- Monitor **Kotlin** mobile apps
- **iOS 11** support
- Monitor **Swift** mobile apps
- Run **Crashlytics** or **Apteligent** (formerly Crittercism) in conjunction with the RUM Mobile framework

Platform Enhancements:

- **OpenSSL** upgraded to 1.1.0g version for Sniffer Probe.
- **Tomcat** upgraded to 8.5.29 version for Client Monitor.
- **OpenJDK** upgraded to 1.8.0_163 version for RUM Engine and Client Monitor.
- **MySQL database** upgraded to 5.7.21 version for RUM Engine.
- **RHEL 7.4** support: Sniffer Probe and Server Collectors can now be hosted on servers running on RHEL 7.4.
- **Engine web console** is now supported across browsers Microsoft Internet Explorer (IE 11.0), Mozilla Firefox (52.x ESR 64 bit), Google Chrome (65.0.3325.181).

Diagnostics 9.50

Diagnostics 9.50 includes the following features and enhancements:

PCF support:

Diagnostics monitoring is now enabled for PaaS Pivotal Cloud Foundry (PCF) technology. This allows Diagnostics server to launch in the cloud, providing ready scalability, and enables you to quickly set up monitoring for cloud-based Java applications

Customer enhancements

- Improved alerting information for events generated by Diagnostics in OMi
- .NET agent profiler now available on IE11
- Security improvements

Mandates

- Support for RHEL 7.4
- Support for Glassfish 5.0 application server

Integrations

You can now drill down from RUM and BPM reports to Diagnostics via Java Web Start (JWS), removing browser dependency on Java Applets.

SiteScope 2018.05

SiteScope Integration with COSO

SiteScope integrates with Collect Once Store Once (COSO) to store its metrics data that is collected from SiteScope monitors. You can visualize the SiteScope metrics data using PD graphing in OBM. This feature is available with the Operations Bridge 2018.05 Premium edition.

Public REST APIs

This version of SiteScope introduces the following new APIs.

getallremotes	Retrieves details of all the remote servers
getlicenseinfo	Retrieves SiteScope license information
getbuildinfo	Retrieves the SiteScope build information
createwindowpasswordremote	Creates a Windows remote server with user name and password in SiteScope
createunixpasswordremote	Creates a Unix remote server with user name and password in SiteScope
getallalerts	Retrieves all the configured alerts and alert actions with details
gettoplevelgroups	Retrieves all groups under the SiteScope (root) group
updatewindowpasswordremote	Updates details of a Windows remote server
updateunixpasswordremote	Updates details of a Unix remote server
getconnectivity	Tests the connectivity of Windows and Unix remote servers
getuserpreferences	Retrieves all the preferences associated with users
getmonitorsnapshot	Retrieves list of all monitors with brief detail of each monitor
search	Enhanced to retrieve alerts based on the given criteria

Send documentation feedback

If you have comments about this document, you can [contact the documentation team](#) by email. If an email client is configured on this system, click the link above and an email window opens with the following information in the subject line:

Feedback on What's New (Micro Focus Application Performance Management 9.50)

Add your feedback to the email and click **Send**.

If no email client is available, copy the information above to a new message in a web mail client, and send your feedback to docs.feedback@microfocus.com.

We appreciate your feedback!