



Cloud Assessment

Software Version: 1.01

Windows and Linux Operating System

Cloud Assessment Workbench

Document Release Date: January 2018

Software Release Date: January 2018

Legal notices

Warranty

The only warranties for Seattle SpinCo, Inc. and its subsidiaries (“Seattle”) products and services are set forth in the express warranty statements accompanying such products and services. Nothing herein should be construed as constituting an additional warranty. Seattle shall not be liable for technical or editorial errors or omissions contained herein. The information contained herein is subject to change without notice.

Restricted rights legend

Confidential computer software. Except as specifically indicated, valid license from Seattle required for possession, use or copying. Consistent with FAR 12.211 and 12.212, Commercial Computer Software, Computer Software Documentation, and Technical Data for Commercial Items are licensed to the U.S. Government under vendor’s standard commercial license.

Copyright notice

© Copyright 2017 EntIT Software LLC, a Micro Focus company.

Trademark notices

Adobe™ is a trademark of Adobe Systems Incorporated.

Microsoft® and Windows® are U.S. registered trademarks of Microsoft Corporation.

UNIX® is a registered trademark of The Open Group.

Documentation updates

The title page of this document contains the following identifying information:

- Software Version number, which indicates the software version.
- Document Release Date, which changes each time the document is updated.
- Software Release Date, which indicates the release date of this version of the software.

To verify you are using the most recent edition of a document, go to <https://softwaresupport.hpe.com/manuals>.

To check for new versions of software, go to <https://www.hpe.com/software/entitlements>. To check for recent software patches, go to <https://softwaresupport.hpe.com/patches>.

You will also receive updated or new editions if you subscribe to the appropriate product support service. Contact your Micro Focus sales representative for details.

For information and details about the products, services, and support that Micro Focus offers, contact your Client Director.

Support

Visit the Micro Focus Software Support Online web site at <https://software.microfocus.com/en-us/software/customer-technical-support-services>.

This web site provides contact information and details about the products, services, and support that Micro Focus offers.

Micro Focus online support provides customer self-solve capabilities. It provides a fast and efficient way to access interactive technical support tools needed to manage your business. As a valued support customer, you can benefit by using the support web site to:

- Search for knowledge documents of interest
- Submit and track support cases and enhancement requests
- Manage software licenses
- Download new versions of software or software patches
- Access product documentation

- Manage support contracts
- Look up Micro Focus support contacts
- Review information about available services
- Enter into discussions with other software customers
- Research and register for software training

Most of the support areas require you to register as a Passport user and sign in. Many also require a support contract.

To register for a Passport ID, go to <https://cf.passport.softwaregrp.com/hppcf/login.do>.

To find more information about access levels, go to <https://softwaresupport.hpe.com/web/softwaresupport/access-levels>.

To check for recent updates or to verify that you are using the most recent edition of a document, contact your Client Director.

Contents

Micro Focus Cloud Assessment Workbench	5
Installing Cloud Assessment Workbench	6
Configuring Cloud Assessment Workbench	7
Switching to Admin Mode	7
Setting JVM Memory	7
Setting Timeout	8
Resetting Security Storage	8
Proxy Configuration	8
Configuring SSL	9
Switching to Admin Mode	10
Setting JVM Memory	10
Setting Timeout	10
Resetting Security Storage	10
Proxy Configuration	11
Configuring SSL	11

Micro Focus Cloud Assessment Workbench

Cloud Assessment Workbench consists of the following tools, enabling you to customize your deployment of Micro Focus Cloud Assessment.

- Assertion Editor [Assertion Editor](#)
Customizes the conditions applied by your business policies within Micro Focus Cloud Assessment. For more information, see *Micro Focus Cloud Assessment Assertion Editor User Guide*.
- Customization Editor [Customization Editor](#)
Customizes the underlying System Data Model (SDM) within Micro Focus Cloud Assessment. For more information, see *Micro Focus Cloud Assessment Customization Editor User Guide*.
- Report Editor [Report Editor](#)
Customizes report definitions for use with Micro Focus Cloud Assessment. For more information, see *Micro Focus Cloud Assessment Report Editor User Guide*.
- Taxonomy Editor [Taxonomy Editor](#)
Customizes the taxonomies used to categorize artifacts in Micro Focus Cloud Assessment. For more information, see *Micro Focus Cloud Assessment Taxonomy Editor User Guide*.
- Customization Editor [Customization Editor](#)
Customizes the underlying System Data Model (SDM) within Micro Focus Cloud Assessment. For more information, see *Micro Focus Cloud Assessment Customization Editor User Guide*.
- Taxonomy Editor [Taxonomy Editor](#)
Customizes the taxonomies used to categorize artifacts in Micro Focus Cloud Assessment. For more information, see *Micro Focus Cloud Assessment Taxonomy Editor User Guide*.
- Assertion Editor [Assertion Editor](#)
Customizes the conditions applied by your business policies within Micro Focus Cloud Assessment. For more information, see *Micro Focus Cloud Assessment Assertion Editor User Guide*.
- Report Editor [Report Editor](#)
Customizes report definitions for use with Micro Focus Cloud Assessment. For more information, see *Micro Focus Cloud Assessment Report Editor User Guide*.

Installing Cloud Assessment Workbench

Cloud Assessment Workbench is an Eclipse development platform distributed as a zip file, **microfocus-cloudassessment-workbench-1.01-win64.zip**

NOTE:

Cloud Assessment Workbench requires Java SE Development Kit (JDK) 1.8.0 (64 bit version only) or higher. You must include the path to this version of the JDK in the **JAVA_HOME** environment variable.

To install Micro Focus Cloud Assessment Workbench:

1. Extract the archive to your required location.

NOTE:

In this document, the location where you have extracted the archive is referred as **WB_HOME**.

NOTE:

Ensure that the path where you have extracted must not be longer than 97 characters.

To Start Cloud Assessment Workbench:

1. Execute **.exe** from **WB_HOME/cloudassessment-workbench/start.exe**.

The Micro Focus Cloud AssessmentWorkbench welcome screen is displayed.

A screenshot of the Cloud Assessment Workbench interface showing four main menu options, each with a list of sub-options:

- Develop Assertion** (blue button):
 - Create Assertion Project
 - Go to Platform Perspective
 - Help
- Develop Taxonomy** (teal button):
 - Create Taxonomy Project
 - Go to Platform Perspective
 - Help
- Design Report** (grey button):
 - Create Report Project
 - Go to Platform Perspective
 - Help
- Customize Data Model** (purple button):
 - Create Extension Project
 - Go to Extension Perspective
 - Help

Click one of the options to open the respective editor tools, start a new project, or view the documentation set.

Click **Help > Welcome** from the menu options of any of the editor tools to return to the welcome screen.

Configuring Cloud Assessment Workbench

This topic contains configurations that generally apply to the whole Cloud Assessment Workbench suite. The default configuration should work out of the box. However in some cases you need to tune Cloud Assessment Workbench to suit your working environment. This section covers the following topics:

- [Switching to Admin Mode](#)
- [Setting JVM Memory](#)
- [Setting Timeout](#)
- [Resetting Security Storage](#)
- [Proxy Configuration](#)
- [Configuring SSL](#)

Cloud Assessment Workbench editors may require additional configurations. For more specific configurations on specific editor, see *Getting Started* section in the respective editor's guide.

Switching to Admin Mode

By default, Cloud Assessment Workbench runs in **normal** mode which prevents users from uploading system taxonomies (IDs start with `uddi:systinet.com:soa:model:taxonomies`) and the Report Editor `.rptlibrary` file to Cloud Assessment servers. If you need to work with system taxonomies or want to upload the `.rptlibrary` file you must switch from **normal** mode to **admin** mode.

CAUTION:

The Cloud Assessment uses hard-coded values from system taxonomies. Changing or removing them may cause errors.

To Switch Micro Focus Cloud Assessment Workbench to Admin Mode:

1. Open `WB_HOME/cloudassessment-workbench/configuration/config.ini` with a text editor.
2. Add `mode=admin` to `config.ini`.
3. Restart the Cloud Assessment Workbench.

Setting JVM Memory

Cloud Assessment Workbench is memory-intensive. If you experience performance issues, Micro Focus recommends to increase the memory allocation.

To increase the memory allocation:

1. Open `WB_HOME/cloudassessment-workbench/start.ini` for editing.
2. Set the new values as follows:
 - `-Xms1024m`
 - `-Xmx2048m`
3. Save the changes and restart the Cloud Assessment Workbench.

Setting Timeout

Cloud Assessment Workbench downloading from Cloud Assessment may time out. If you experience issues, HPE recommends increasing the time out.

To increase the Timeout:

1. Open `WB_HOME/cloudassessment-workbench/start.ini` (or `eclipse.ini` for stand-alone installation) for editing.
2. Set the new value as follows:
`-Dorg.cloudassessment.platform.rest.Client.timeout=600000`
The value is in milliseconds with a default value of 120000 (2 minutes).
3. Save the changes and restart the Cloud Assessment Workbench.

Resetting Security Storage

Cloud Assessment Workbench may fail to store saved credentials of servers. In such cases, Micro Focus recommends to clear the secure storage.

To reset the secure storage:

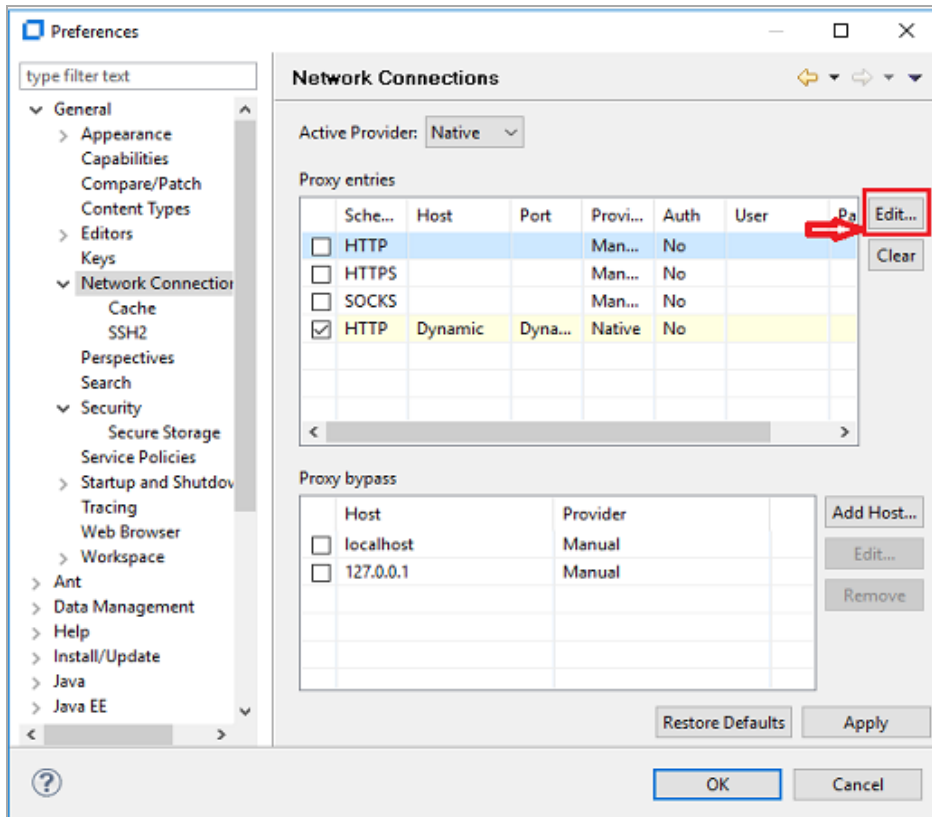
1. In Cloud Assessment Workbench, go to **Windows > Preferences > General > Security > Security Storage > Contents** tab.
2. Click root node in **Default Secure Storage** and click **Delete**.
3. Restart the Cloud Assessment Workbench.

Proxy Configuration

You can connect to Micro Focus Cloud Assessment from Cloud Assessment Workbench via proxy. You must configure the proxy settings in Cloud Assessment Workbench manually.

To configure the proxy settings in Cloud Assessment Workbench:

1. Go to **Windows > Preferences > General > Network Connections**.
2. In **Proxy entries** table, click **Edit** to enter the proxy setting information.



3. Click **Apply** or **OK** to apply the changes.

Configuring SSL

By default, Cloud Assessment Workbench trusts all Cloud Assessment server certificates. You may want Cloud Assessment Workbench to verify Cloud Assessment server certificates.

To verify the Cloud Assessment server certificates:

1. Add the following options to `WB_HOME/cloudassessment-workbench/start.ini`:
 - `-Dcom.microfocus.cloudassessment.security.ssl.verifyCert=true`
 - `-Djavax.net.ssl.trustStore=USER_TRUSTSTORE`
 - `-Djavax.net.ssl.trustStorePassword=TRUSTSTORE_PASS`
 - `-Djavax.net.ssl.trustStoreType=TRUSTSTORE_FORMAT`

If Cloud Assessment is configured for 2-way SSL, you must provide Cloud Assessment Workbench certificates to Cloud Assessment.

To provide Cloud Assessment Workbench client certificates to Cloud Assessment:

1. Add the following options to `WB_HOME/cloudassessment-workbench/start.ini`:
 - `-Djavax.net.ssl.keyStore=USER_KEYSTORE`
 - `-Djavax.net.ssl.keyStorePassword=KEYSTORE_PASS`
 - `-Djavax.net.ssl.keyStoreType=KEYSTORE_FORMAT`

Switching to Admin Mode

By default, Cloud Assessment Workbench runs in **normal** mode which prevents users from uploading system taxonomies (IDs start with `uddi:systinet.com:soa:model:taxonomies`) and the Report Editor `.rptlibrary` file to Cloud Assessment servers. If you need to work with system taxonomies or want to upload the `.rptlibrary` file you must switch from **normal** mode to **admin** mode.

CAUTION:

The Cloud Assessment uses hard-coded values from system taxonomies. Changing or removing them may cause errors.

To Switch Micro Focus Cloud Assessment Workbench to Admin Mode:

1. Open `WB_HOME/cloudassessment-workbench/configuration/config.ini` with a text editor.
2. Add `mode=admin` to `config.ini`.
3. Restart the Cloud Assessment Workbench.

Setting JVM Memory

Cloud Assessment Workbench is memory-intensive. If you experience performance issues, Micro Focus recommends to increase the memory allocation.

To increase the memory allocation:

1. Open `WB_HOME/cloudassessment-workbench/start.ini` for editing.
2. Set the new values as follows:
 - `-Xms1024m`
 - `-Xmx2048m`
3. Save the changes and restart the Cloud Assessment Workbench.

Setting Timeout

Cloud Assessment Workbench downloading from Cloud Assessment may time out. If you experience issues, Micro Focus recommends increasing the time out.

To increase the Timeout:

1. Open `WB_HOME/cloudassessment-workbench/start.ini` (or `eclipse.ini` for stand-alone installation) for editing.
2. Set the new value as follows:
`-Dorg.cloudassessment.platform.rest.Client.timeout=600000`
The value is in milliseconds with a default value of 120000 (2 minutes).
3. Save the changes and restart the Cloud Assessment Workbench.

Resetting Security Storage

Cloud Assessment Workbench may fail to store saved credentials of servers. In such cases, Micro Focus recommends to clear the secure storage.

To reset the secure storage:

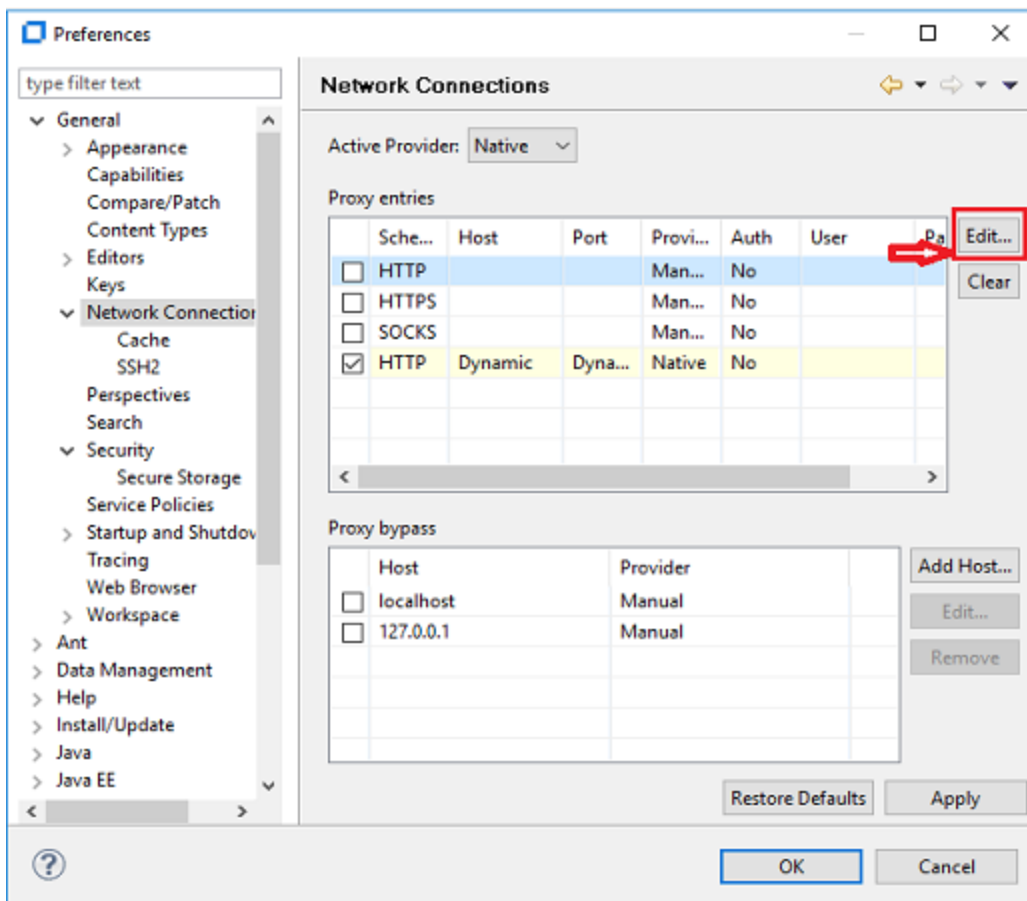
1. In Cloud Assessment Workbench, go to **Windows > Preferences > General > Security > Security Storage > Contents** tab.
2. Click root node in **Default Secure Storage** and click **Delete**.
3. Restart the Cloud Assessment Workbench.

Proxy Configuration

You can connect to Micro Focus Cloud Assessment from Cloud Assessment Workbench via proxy. You must configure the proxy settings in Cloud Assessment Workbench manually.

To configure the proxy settings in Cloud Assessment Workbench:

1. Go to **Windows > Preferences > General > Network Connections**.
2. In **Proxy entries** table, click **Edit** to enter the proxy setting information.



3. Click **Apply** or **OK** to apply the changes.

Configuring SSL

By default, Cloud Assessment Workbench trusts all Cloud Assessment server certificates. You may want Cloud Assessment Workbench to verify Cloud Assessment server certificates.

To verify the Cloud Assessment server certificates:

1. Add the following options to `WB_HOME/cloudassessment-workbench/start.ini`:
 - `-Dcom.microfocus.cloudassessment.security.ssl.verifyCert=true`
 - `-Djavax.net.ssl.trustStore=USER_TRUSTSTORE`
 - `-Djavax.net.ssl.trustStorePassword=TRUSTSTORE_PASS`
 - `-Djavax.net.ssl.trustStoreType=TRUSTSTORE_FORMAT`

If Cloud Assessment is configured for 2-way SSL, you must provide Cloud Assessment Workbench certificates to Cloud Assessment.

To provide Cloud Assessment Workbench client certificates to Cloud Assessment:

1. Add the following options to `WB_HOME/cloudassessment-workbench/start.ini`:
 - `-Djavax.net.ssl.keyStore=USER_KEYSTORE`
 - `-Djavax.net.ssl.keyStorePassword=KEYSTORE_PASS`
 - `-Djavax.net.ssl.keyStoreType=KEYSTORE_FORMAT`